

Data Path : Z:\pestpcbsrv\HPCHEM1\ECD_O\Data\P0050825\
 Data File : PO110950.D
 Signal(s) : Signal #1: ECD1A.ch Signal #2: ECD2B.ch
 Acq On : 08 May 2025 10:54
 Operator : YP/AJ
 Sample : AR1254CCC500
 Misc :
 ALS Vial : 6 Sample Multiplier: 1

Instrument :
 ECD_O
 ClientSampleId :
 AR1254CCC500

Integration File signal 1: autoint1.e
 Integration File signal 2: autoint2.e
 Quant Time: May 08 13:10:33 2025
 Quant Method : Z:\pestpcbsrv\HPCHEM1\ECD_O\methods\P0050225.M
 Quant Title : GC EXTRACTABLES
 QLast Update : Fri May 02 23:47:49 2025
 Response via : Initial Calibration
 Integrator: ChemStation

Volume Inj. : 2 µl
 Signal #1 Phase : ZB-MR1 Signal #2 Phase: ZB-MR2
 Signal #1 Info : 30Mx0.32mmx 0.50µ Signal #2 Info : 30M x 0.32mm x 0.25µm

Compound	RT#1	RT#2	Resp#1	Resp#2	ng/ml	ng/ml
System Monitoring Compounds						
1) SA Tetrachlo...	3.684	3.681	292.9E6	273.1E6	51.203	56.393
2) SA Decachlor...	8.727	8.675	252.6E6	86475805	41.396	51.252
Target Compounds						
3) L1 AR-1016-1	4.775	4.759	3231623	2865232	14.622	18.034
4) L1 AR-1016-2	4.793	4.778	2666427	2350079	8.597	10.282
5) L1 AR-1016-3	4.850	4.955	1663087	1460124	7.272	11.974 #
6) L1 AR-1016-4	4.971	4.996	1787302	58378682	10.690	579.378 #
7) L1 AR-1016-5	5.227	5.209	41387665	35879984	232.399	273.054
8) L2 AR-1221-1	3.922	3.890	73908	260682	0.849	3.916 #
9) L2 AR-1221-2	3.986	3.979	4793278	4116907	70.790	80.202
10) L2 AR-1221-3	4.059	4.051	817963	862473	4.136	5.636 #
11) L3 AR-1232-1	4.059	4.051	817963	862473	5.326	7.343 #
12) L3 AR-1232-2	4.551	4.778	1413503	2350079	17.158	20.429
13) L3 AR-1232-3	4.793	4.955	2666427	1460124	16.761	24.220 #
14) L3 AR-1232-4	4.971	5.037	1787302	18715563	21.234	335.931 #
15) L3 AR-1232-5	5.013	5.209	65784438	35879984	1117.408	609.532 #
16) L4 AR-1242-1	4.775	4.759	3231623	2865232	17.570	21.653
17) L4 AR-1242-2	4.793	4.778	2666427	2350079	10.351	12.364
18) L4 AR-1242-3	4.850	4.955	1663087	1460124	9.132	14.411 #
19) L4 AR-1242-4	4.971	5.037	1787302	18715563	12.798	180.460 #
20) L4 AR-1242-5	5.623	5.560	22208503	134.7E6	142.458	1064.212 #
21) L5 AR-1248-1	4.775	4.759	3231623	2865232	24.601	29.730
22) L5 AR-1248-2	5.013	4.996	65784438	58378682	375.412	432.045
23) L5 AR-1248-3	5.227	5.037	41387665	18715563	187.727	128.946 #
24) L5 AR-1248-4	5.582	5.209	160.0E6	35879984	488.209	214.188 #
25) L5 AR-1248-5	5.623	5.599	22208503	18052420	95.133	107.533
26) L6 AR-1254-1	5.582	5.560	160.0E6	134.7E6	473.954	536.573
27) L6 AR-1254-2	5.731	5.707	138.0E6	117.0E6	479.808	536.066
28) L6 AR-1254-3	6.136	6.109	221.6E6	179.1E6	484.614	535.766
29) L6 AR-1254-4	6.366	6.337	141.0E6	100.7E6	462.666	518.689
30) L6 AR-1254-5	6.785	6.754	200.5E6	143.0E6	475.208	533.035
31) L7 AR-1260-1	6.267	6.240	110.7E6	86229110	332.799	390.585
32) L7 AR-1260-2	6.456	6.427	94537802	67337989	227.905	261.783
33) L7 AR-1260-3	6.854	6.578	17798810	67702808	50.527	290.391 #
34) L7 AR-1260-4	7.083	7.050	10159896	7010646	33.395	38.500
35) L7 AR-1260-5	7.326	7.290	25260247	15284992	34.396	38.874
36) L8 AR-1262-1	6.854	6.823	17798810	13067243	38.658	46.271
37) L8 AR-1262-2	7.326	7.290	25260247	15284992	32.117	34.793
38) L8 AR-1262-3	7.611	7.575	972497	620092	2.911	3.819 #
39) L8 AR-1262-4	7.670	7.634	22880081	13385060	39.550	45.976
40) L8 AR-1262-5	8.170	8.129	998653	336027	3.743	3.408
41) L9 AR-1268-1	7.611	7.575	972497	620092	1.093	1.439 #

Data Path : Z:\pestpcbsrv\HPCHEM1\ECD_0\Data\P0050825\
 Data File : P0110950.D
 Signal(s) : Signal #1: ECD1A.ch Signal #2: ECD2B.ch
 Acq On : 08 May 2025 10:54
 Operator : YP/AJ
 Sample : AR1254CCC500
 Misc :
 ALS Vial : 6 Sample Multiplier: 1

Instrument :
 ECD_0
 ClientSampleId :
 AR1254CCC500

Integration File signal 1: autoint1.e
 Integration File signal 2: autoint2.e
 Quant Time: May 08 13:10:33 2025
 Quant Method : Z:\pestpcbsrv\HPCHEM1\ECD_0\methods\P0050225.M
 Quant Title : GC EXTRACTABLES
 QLast Update : Fri May 02 23:47:49 2025
 Response via : Initial Calibration
 Integrator: ChemStation

Volume Inj. : 2 µl
 Signal #1 Phase : ZB-MR1 Signal #2 Phase: ZB-MR2
 Signal #1 Info : 30Mx0.32mmx 0.50µ Signal #2 Info : 30M x 0.32mm x 0.25µm

	Compound	RT#1	RT#2	Resp#1	Resp#2	ng/ml	ng/ml
42)	L9 AR-1268-2	7.670	7.634	22880081	13385060	28.513	34.868
43)	L9 AR-1268-3	7.882	7.842	1251056	489390	1.822	1.723
44)	L9 AR-1268-4	8.170	8.129	998653	336027	3.592	3.227
45)	L9 AR-1268-5	8.466	8.421	1974858	775711	0.966	1.278 #

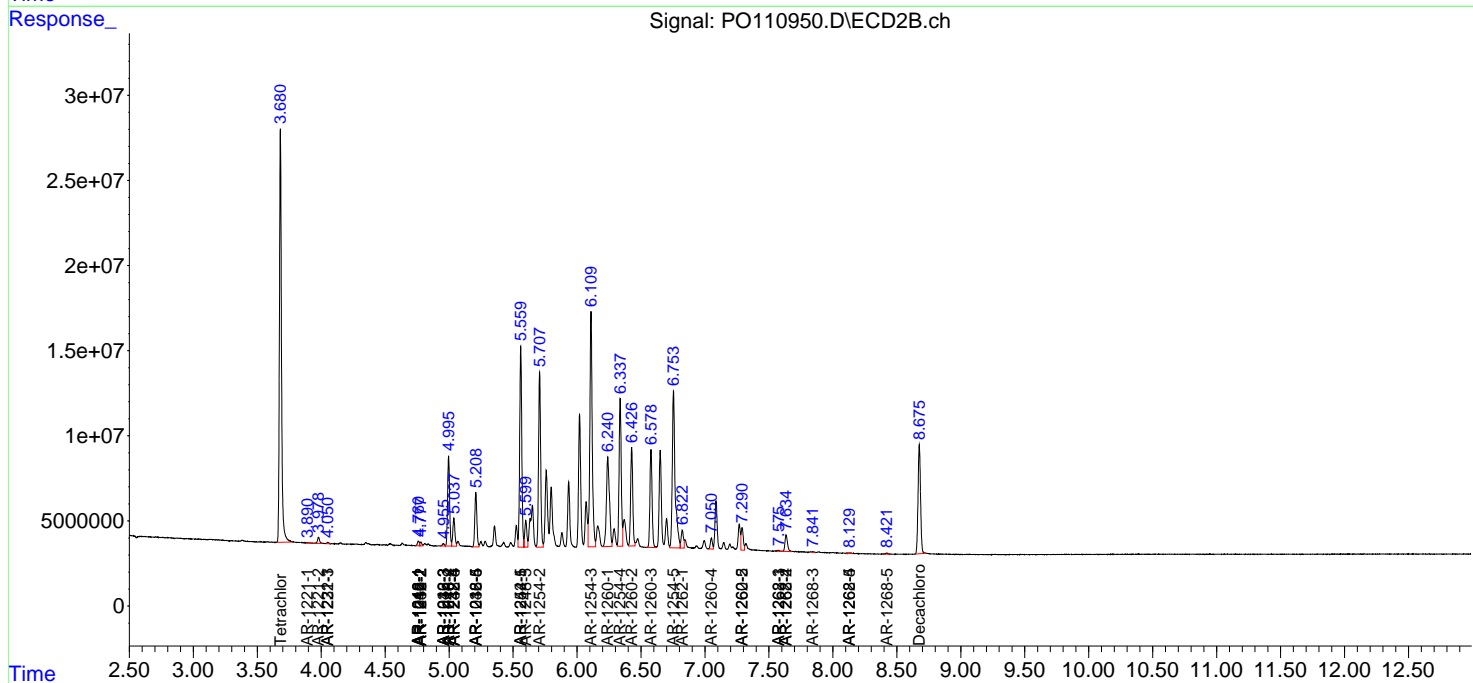
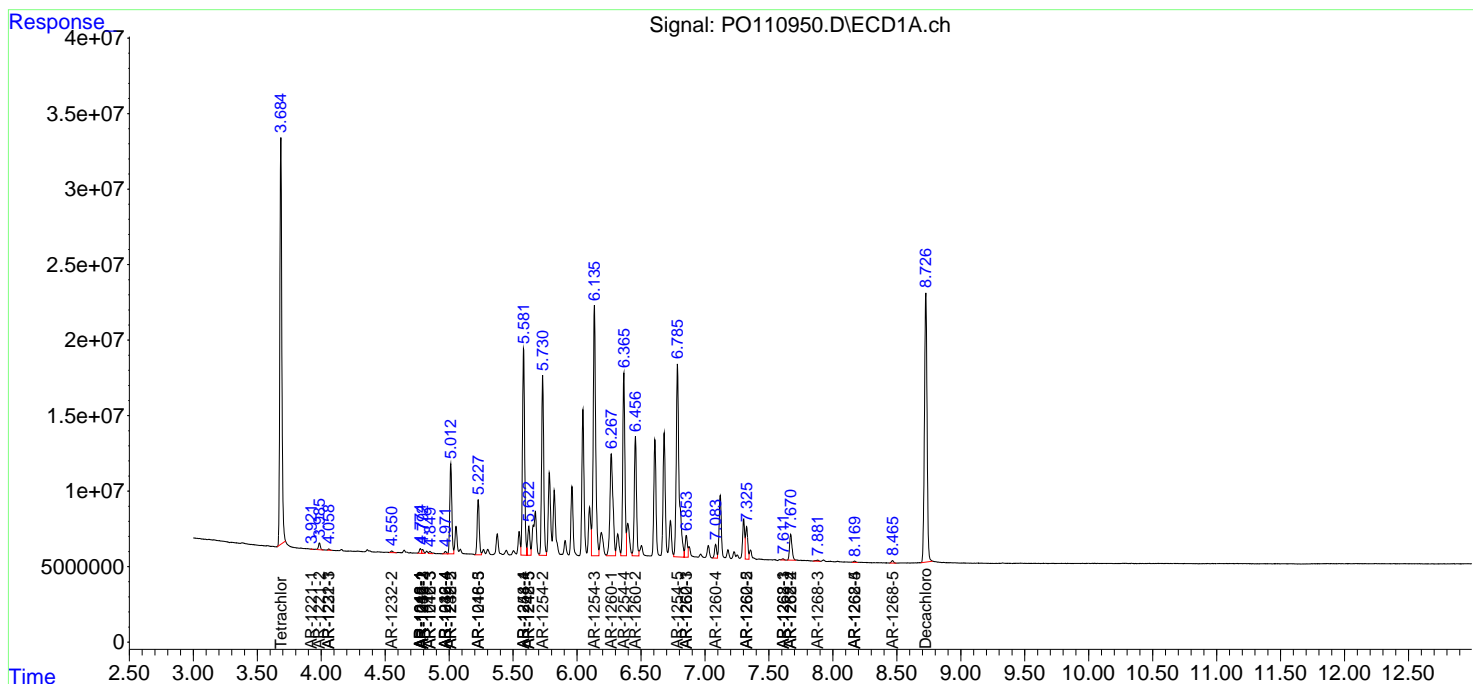
(f)=RT Delta > 1/2 Window (#)=Amounts differ by > 25% (m)=manual int.

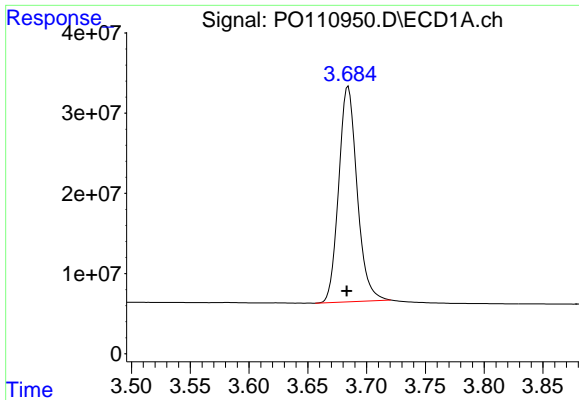
Data Path : Z:\pestpcbsrv\HPCHEM1\ECD_O\Data\PO050825\
 Data File : PO110950.D
 Signal(s) : Signal #1: ECD1A.ch Signal #2: ECD2B.ch
 Acq On : 08 May 2025 10:54
 Operator : YP/AJ
 Sample : AR1254CCC500
 Misc :
 ALS Vial : 6 Sample Multiplier: 1

Instrument :
 ECD_O
 ClientSampleId :
 AR1254CCC500

Integration File signal 1: autoint1.e
 Integration File signal 2: autoint2.e
 Quant Time: May 08 13:10:33 2025
 Quant Method : Z:\pestpcbsrv\HPCHEM1\ECD_O\methods\PO050225.M
 Quant Title : GC EXTRACTABLES
 QLast Update : Fri May 02 23:47:49 2025
 Response via : Initial Calibration
 Integrator: ChemStation

Volume Inj. : 2 µl
 Signal #1 Phase : ZB-MR1 Signal #2 Phase: ZB-MR2
 Signal #1 Info : 30Mx0.32mmx 0.50µ Signal #2 Info : 30M x 0.32mm x 0.25µm

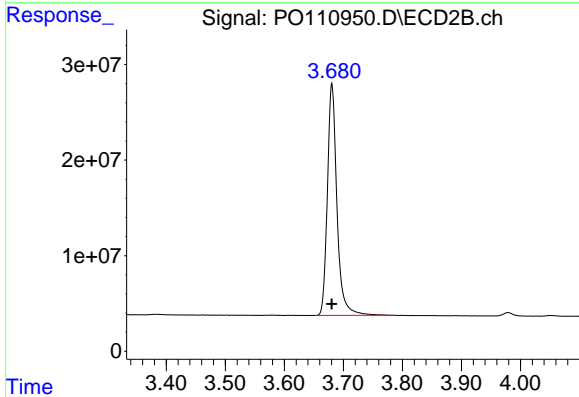




#1 Tetrachloro-m-xylene

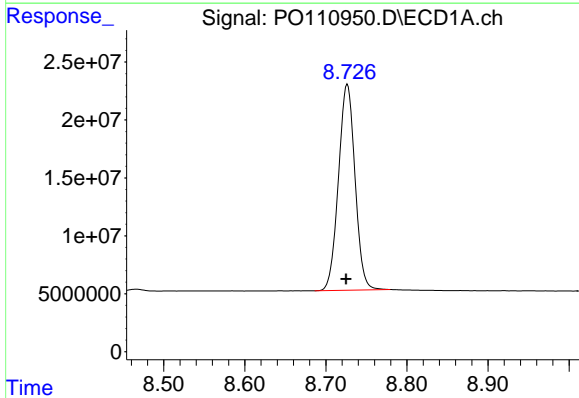
R.T.: 3.684 min
 Delta R.T.: 0.001 min
 Response: 292923336
 Conc: 51.20 ng/ml

Instrument :
 ECD_O
 ClientSampleId :
 AR1254CCC500



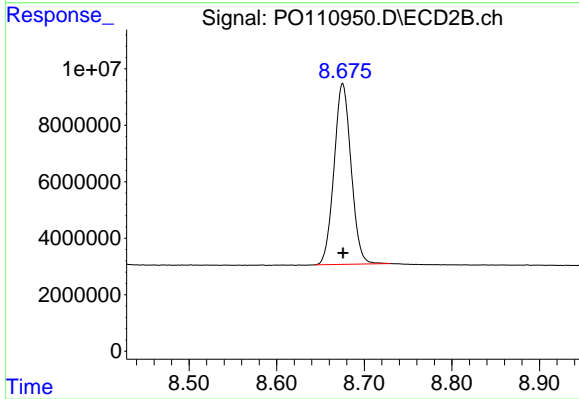
#1 Tetrachloro-m-xylene

R.T.: 3.681 min
 Delta R.T.: 0.000 min
 Response: 273119348
 Conc: 56.39 ng/ml



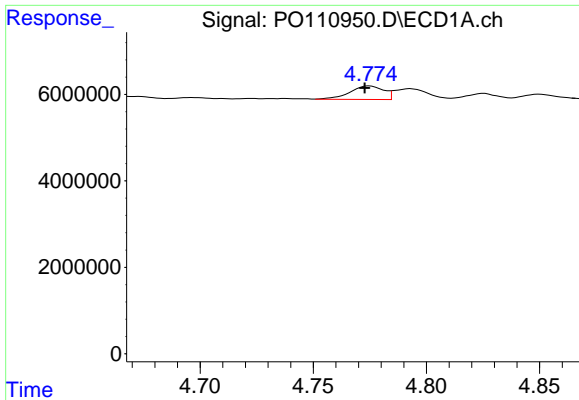
#2 Decachlorobiphenyl

R.T.: 8.727 min
 Delta R.T.: 0.002 min
 Response: 252614883
 Conc: 41.40 ng/ml



#2 Decachlorobiphenyl

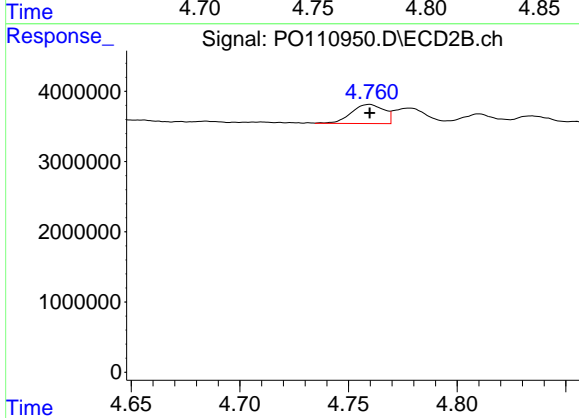
R.T.: 8.675 min
 Delta R.T.: 0.000 min
 Response: 86475805
 Conc: 51.25 ng/ml



#3 AR-1016-1

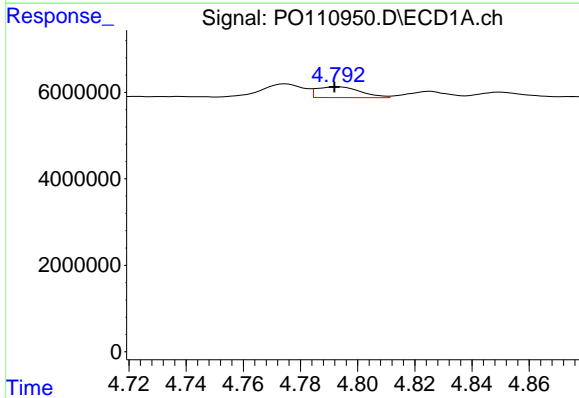
R.T.: 4.775 min
 Delta R.T.: 0.002 min
 Response: 3231623
 Conc: 14.62 ng/ml

Instrument :
 ECD_O
 ClientSampleId :
 AR1254CCC500



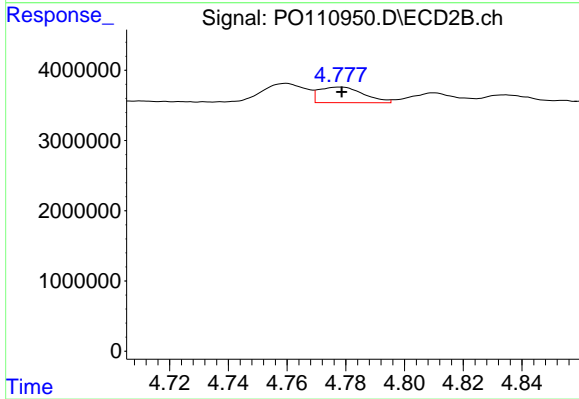
#3 AR-1016-1

R.T.: 4.759 min
 Delta R.T.: 0.000 min
 Response: 2865232
 Conc: 18.03 ng/ml



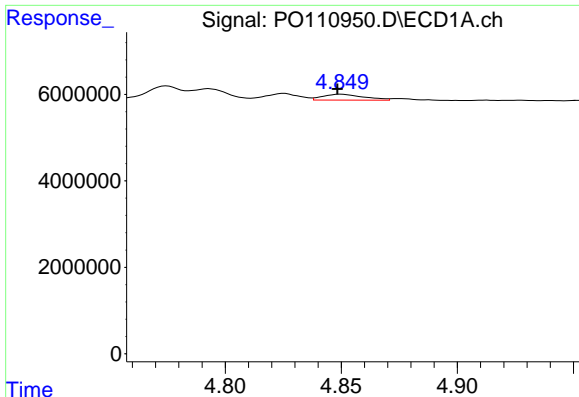
#4 AR-1016-2

R.T.: 4.793 min
 Delta R.T.: 0.001 min
 Response: 2666427
 Conc: 8.60 ng/ml



#4 AR-1016-2

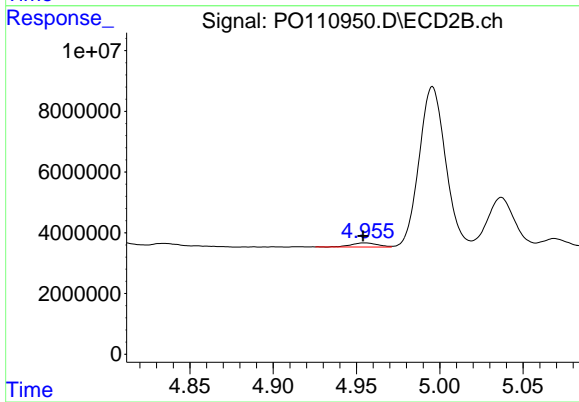
R.T.: 4.778 min
 Delta R.T.: 0.000 min
 Response: 2350079
 Conc: 10.28 ng/ml



#5 AR-1016-3

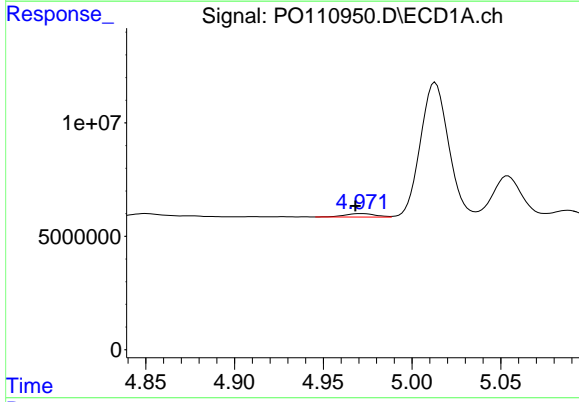
R.T.: 4.850 min
 Delta R.T.: 0.002 min
 Response: 1663087
 Conc: 7.27 ng/ml

Instrument :
 ECD_O
 ClientSampleId :
 AR1254CCC500



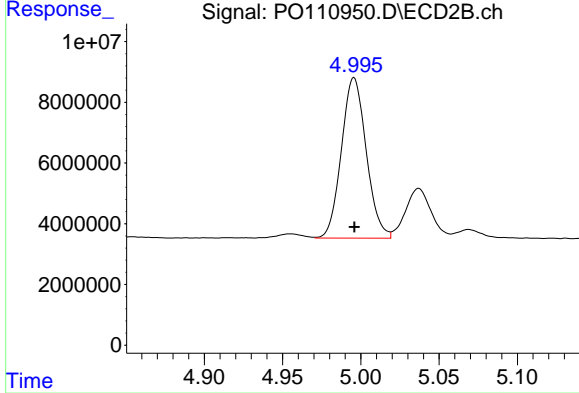
#5 AR-1016-3

R.T.: 4.955 min
 Delta R.T.: 0.001 min
 Response: 1460124
 Conc: 11.97 ng/ml



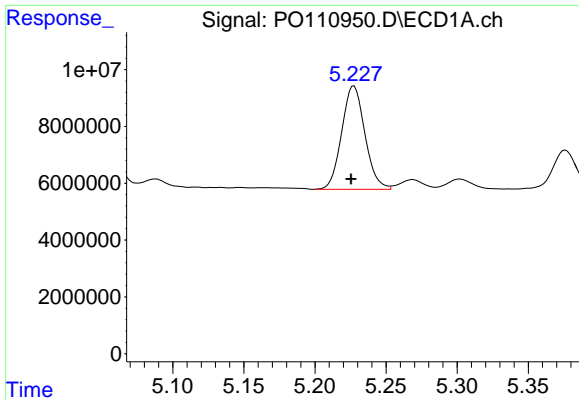
#6 AR-1016-4

R.T.: 4.971 min
 Delta R.T.: 0.003 min
 Response: 1787302
 Conc: 10.69 ng/ml



#6 AR-1016-4

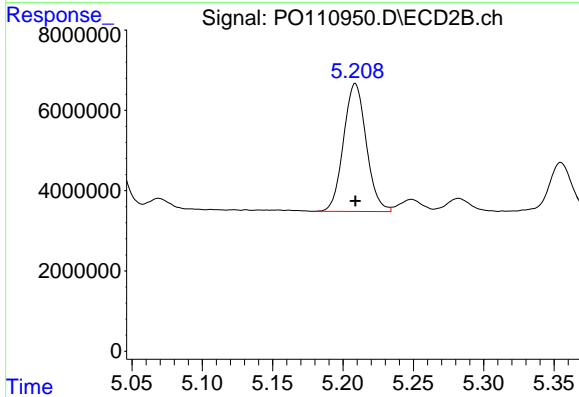
R.T.: 4.996 min
 Delta R.T.: 0.000 min
 Response: 58378682
 Conc: 579.38 ng/ml



#7 AR-1016-5

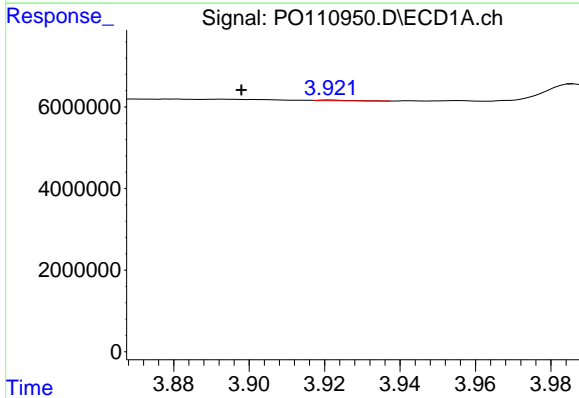
R.T.: 5.227 min
 Delta R.T.: 0.002 min
 Response: 41387665
 Conc: 232.40 ng/ml

Instrument :
 ECD_O
 ClientSampleId :
 AR1254CCC500



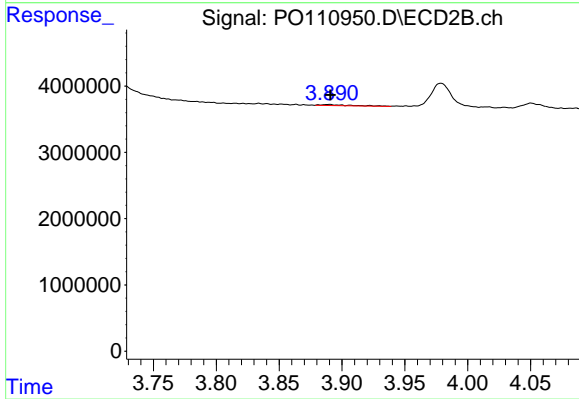
#7 AR-1016-5

R.T.: 5.209 min
 Delta R.T.: 0.000 min
 Response: 35879984
 Conc: 273.05 ng/ml



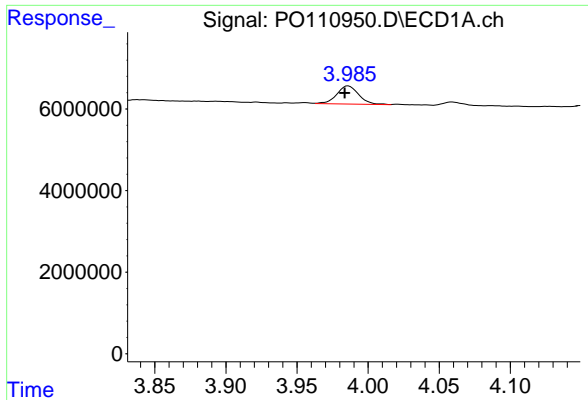
#8 AR-1221-1

R.T.: 3.922 min
 Delta R.T.: 0.024 min
 Response: 73908
 Conc: 0.85 ng/ml



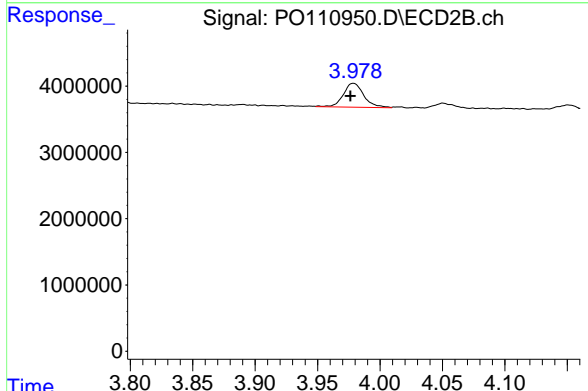
#8 AR-1221-1

R.T.: 3.890 min
 Delta R.T.: -0.001 min
 Response: 260682
 Conc: 3.92 ng/ml

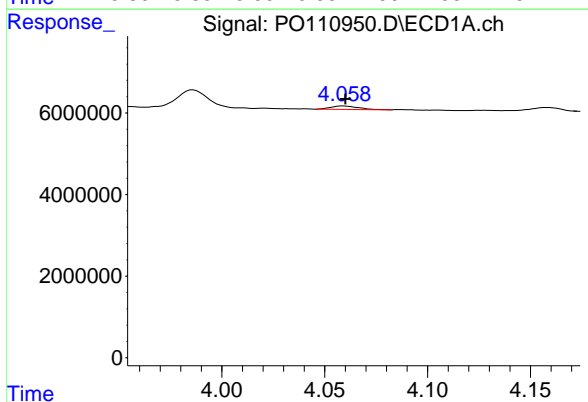


#9 AR-1221-2
 R.T.: 3.986 min
 Delta R.T.: 0.002 min
 Response: 4793278
 Conc: 70.79 ng/ml

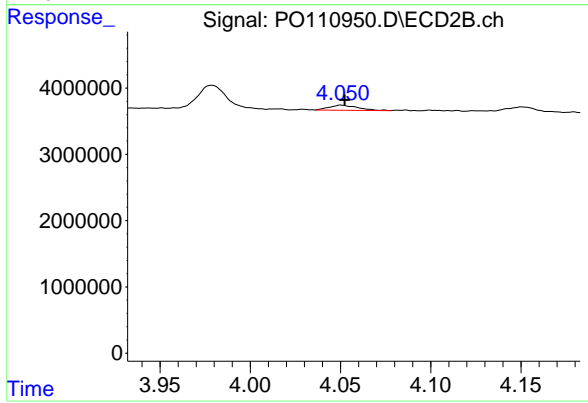
Instrument :
 ECD_O
 ClientSampleId :
 AR1254CCC500



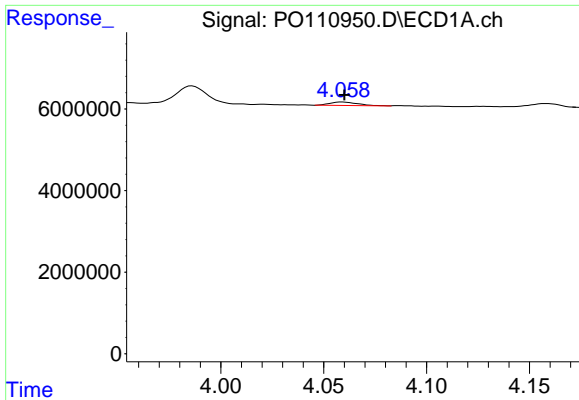
#9 AR-1221-2
 R.T.: 3.979 min
 Delta R.T.: 0.002 min
 Response: 4116907
 Conc: 80.20 ng/ml



#10 AR-1221-3
 R.T.: 4.059 min
 Delta R.T.: 0.000 min
 Response: 817963
 Conc: 4.14 ng/ml



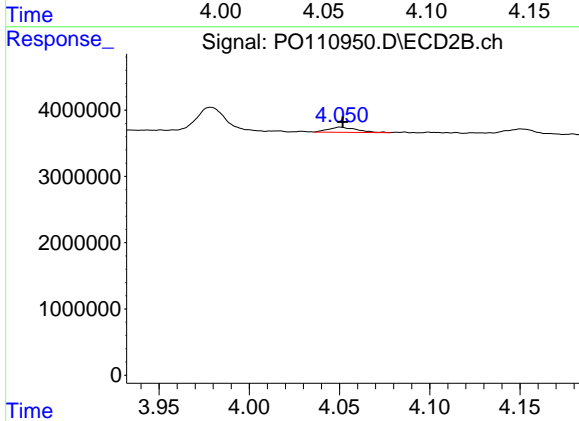
#10 AR-1221-3
 R.T.: 4.051 min
 Delta R.T.: -0.002 min
 Response: 862473
 Conc: 5.64 ng/ml



#11 AR-1232-1

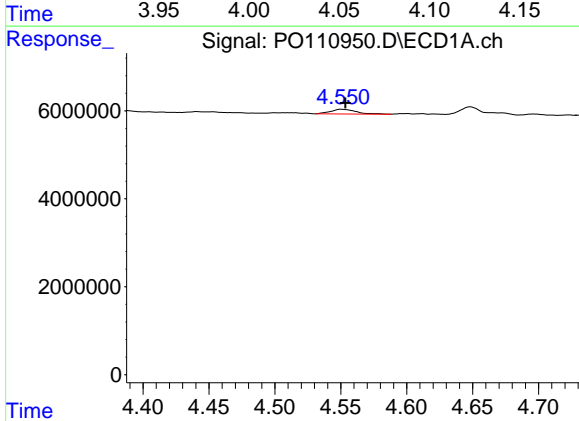
R.T.: 4.059 min
 Delta R.T.: 0.000 min
 Response: 817963
 Conc: 5.33 ng/ml

Instrument :
 ECD_O
 ClientSampleId :
 AR1254CCC500



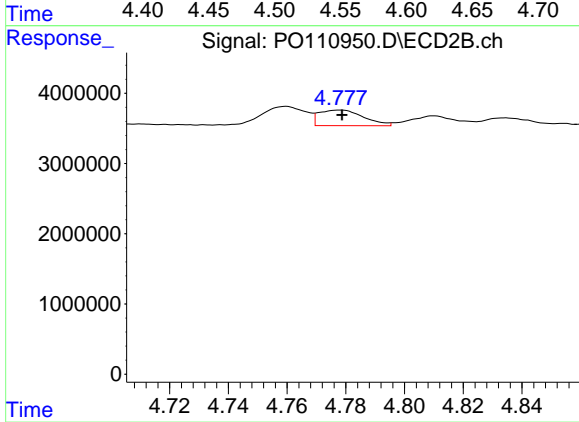
#11 AR-1232-1

R.T.: 4.051 min
 Delta R.T.: -0.001 min
 Response: 862473
 Conc: 7.34 ng/ml



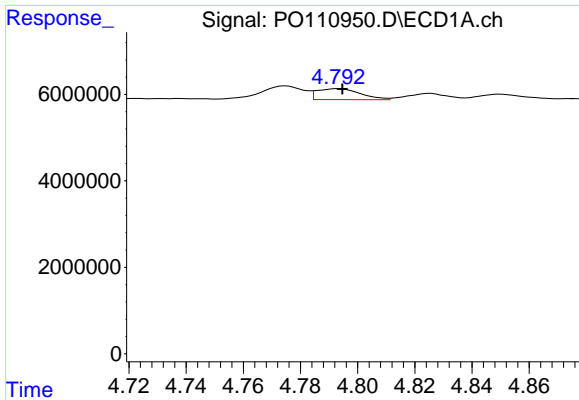
#12 AR-1232-2

R.T.: 4.551 min
 Delta R.T.: -0.003 min
 Response: 1413503
 Conc: 17.16 ng/ml



#12 AR-1232-2

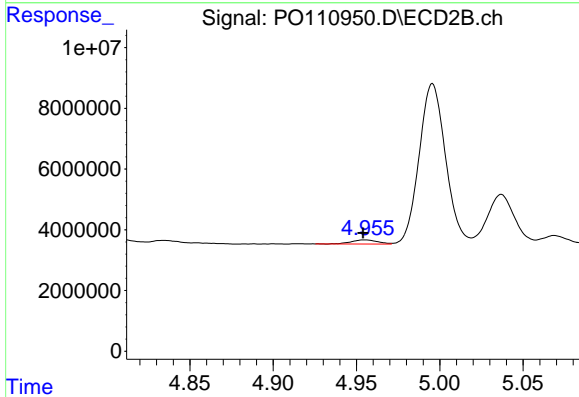
R.T.: 4.778 min
 Delta R.T.: 0.000 min
 Response: 2350079
 Conc: 20.43 ng/ml



#13 AR-1232-3

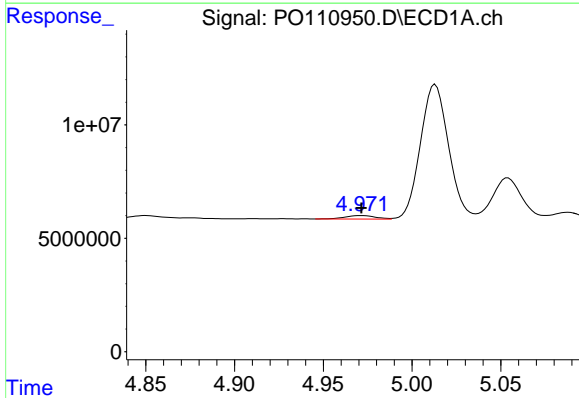
R.T.: 4.793 min
 Delta R.T.: -0.002 min
 Response: 2666427
 Conc: 16.76 ng/ml

Instrument :
 ECD_O
 ClientSampleId :
 AR1254CCC500



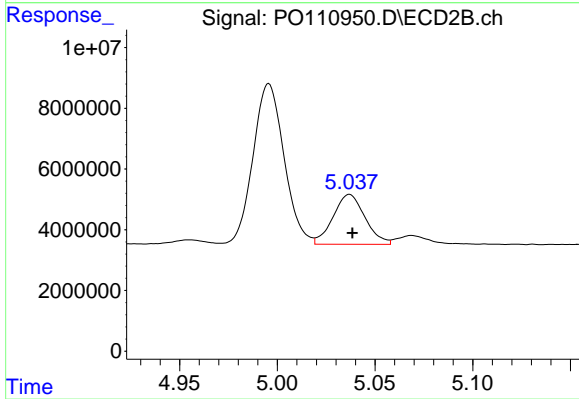
#13 AR-1232-3

R.T.: 4.955 min
 Delta R.T.: 0.001 min
 Response: 1460124
 Conc: 24.22 ng/ml



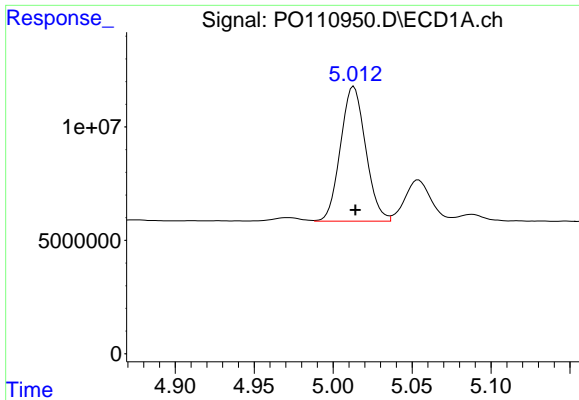
#14 AR-1232-4

R.T.: 4.971 min
 Delta R.T.: 0.000 min
 Response: 1787302
 Conc: 21.23 ng/ml



#14 AR-1232-4

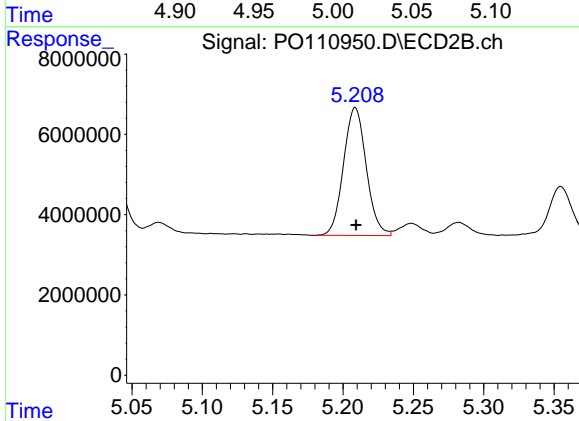
R.T.: 5.037 min
 Delta R.T.: -0.001 min
 Response: 18715563
 Conc: 335.93 ng/ml



#15 AR-1232-5

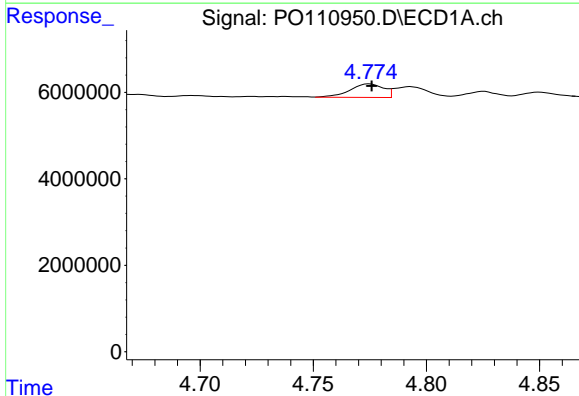
R.T.: 5.013 min
 Delta R.T.: -0.001 min
 Response: 65784438
 Conc: 1117.41 ng/ml

Instrument :
 ECD_O
 ClientSampleId :
 AR1254CCC500



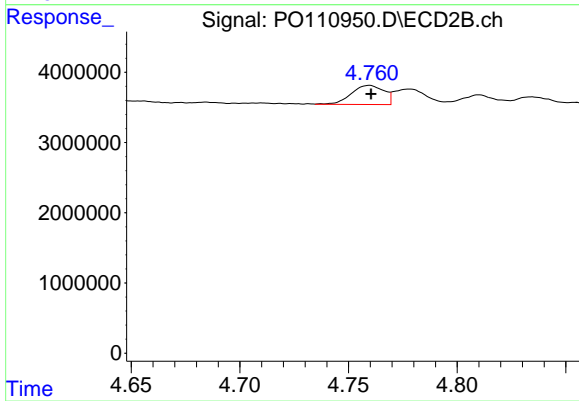
#15 AR-1232-5

R.T.: 5.209 min
 Delta R.T.: 0.000 min
 Response: 35879984
 Conc: 609.53 ng/ml



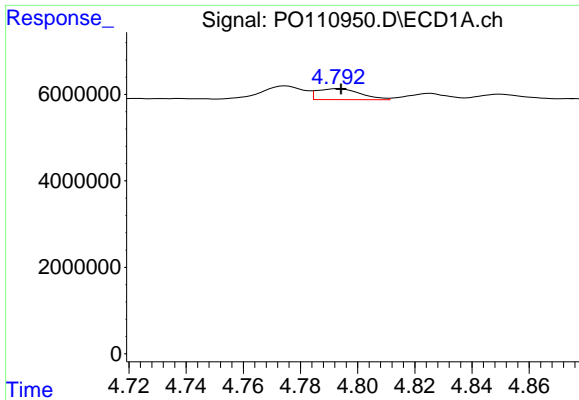
#16 AR-1242-1

R.T.: 4.775 min
 Delta R.T.: 0.000 min
 Response: 3231623
 Conc: 17.57 ng/ml



#16 AR-1242-1

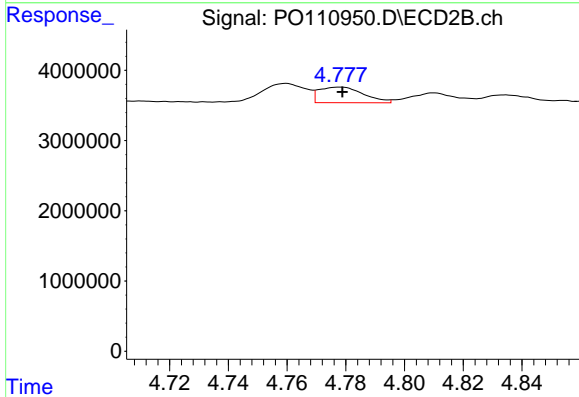
R.T.: 4.759 min
 Delta R.T.: 0.000 min
 Response: 2865232
 Conc: 21.65 ng/ml



#17 AR-1242-2

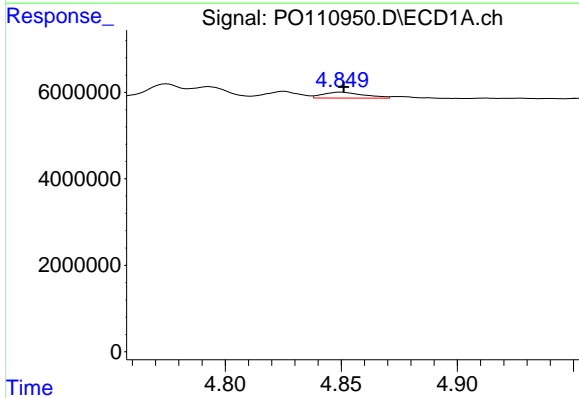
R.T.: 4.793 min
 Delta R.T.: -0.001 min
 Response: 2666427
 Conc: 10.35 ng/ml

Instrument :
 ECD_O
 ClientSampleId :
 AR1254CCC500



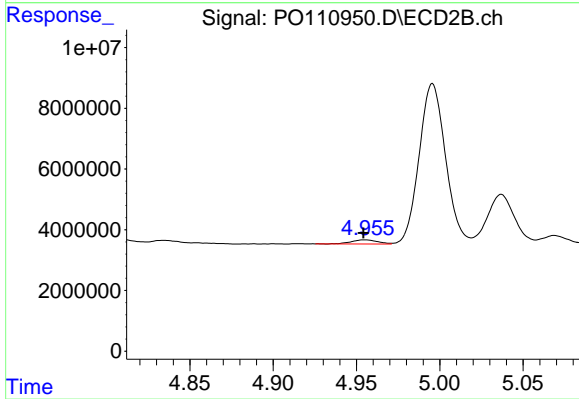
#17 AR-1242-2

R.T.: 4.778 min
 Delta R.T.: 0.000 min
 Response: 2350079
 Conc: 12.36 ng/ml



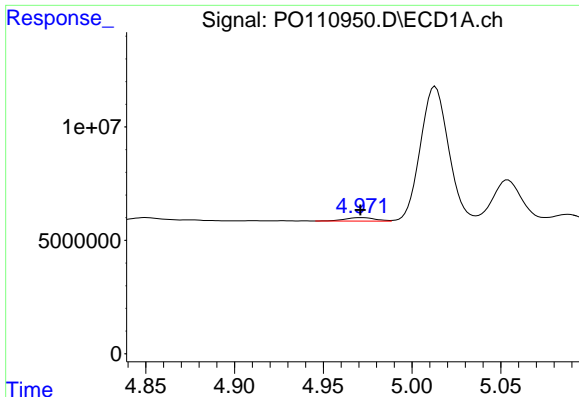
#18 AR-1242-3

R.T.: 4.850 min
 Delta R.T.: 0.000 min
 Response: 1663087
 Conc: 9.13 ng/ml



#18 AR-1242-3

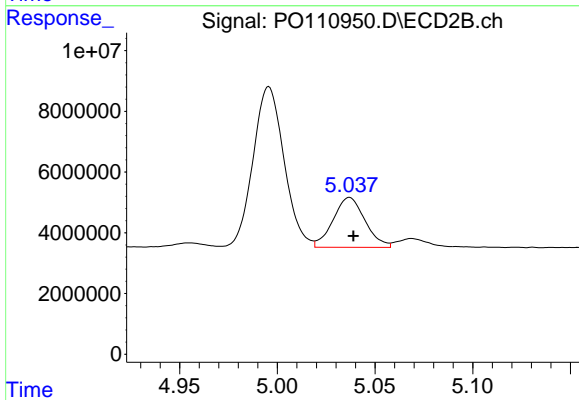
R.T.: 4.955 min
 Delta R.T.: 0.000 min
 Response: 1460124
 Conc: 14.41 ng/ml



#19 AR-1242-4

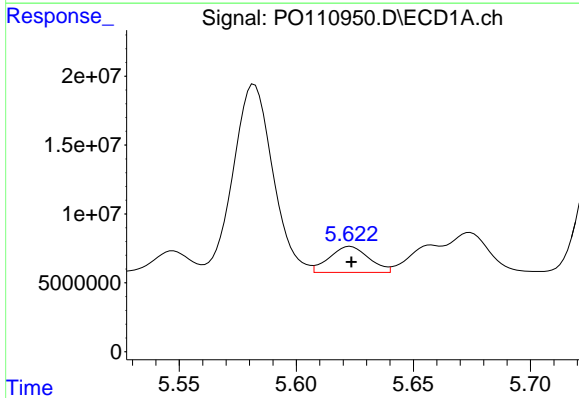
R.T.: 4.971 min
 Delta R.T.: 0.000 min
 Response: 1787302
 Conc: 12.80 ng/ml

Instrument :
 ECD_O
 ClientSampleId :
 AR1254CCC500



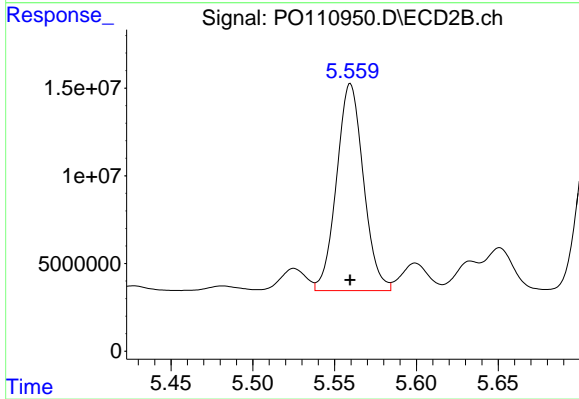
#19 AR-1242-4

R.T.: 5.037 min
 Delta R.T.: -0.002 min
 Response: 18715563
 Conc: 180.46 ng/ml



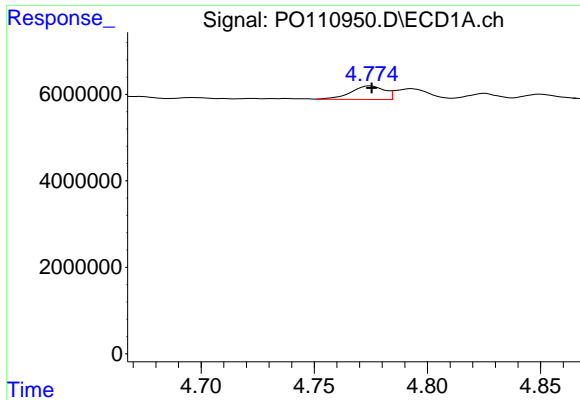
#20 AR-1242-5

R.T.: 5.623 min
 Delta R.T.: 0.000 min
 Response: 22208503
 Conc: 142.46 ng/ml



#20 AR-1242-5

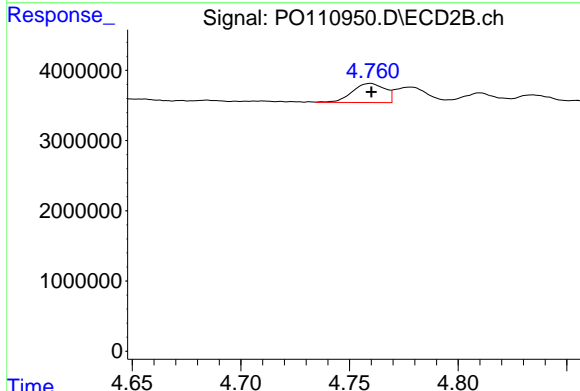
R.T.: 5.560 min
 Delta R.T.: 0.000 min
 Response: 134692775
 Conc: 1064.21 ng/ml



#21 AR-1248-1

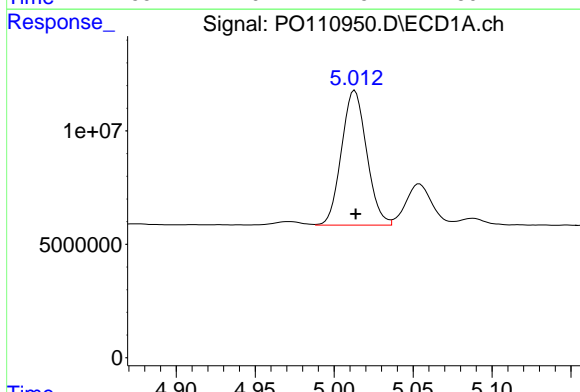
R.T.: 4.775 min
 Delta R.T.: 0.000 min
 Response: 3231623
 Conc: 24.60 ng/ml

Instrument :
 ECD_O
 ClientSampleId :
 AR1254CCC500



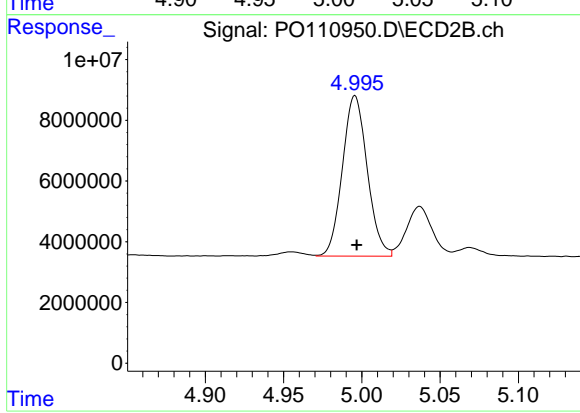
#21 AR-1248-1

R.T.: 4.759 min
 Delta R.T.: 0.000 min
 Response: 2865232
 Conc: 29.73 ng/ml



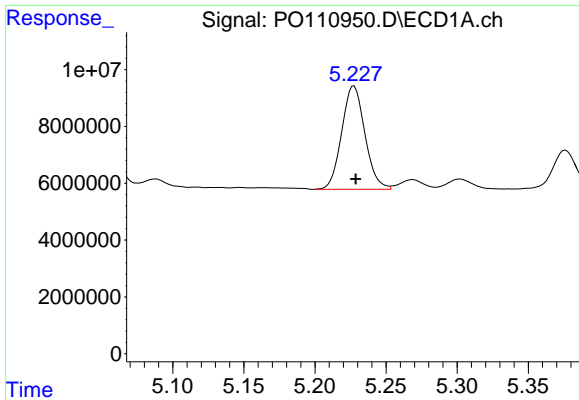
#22 AR-1248-2

R.T.: 5.013 min
 Delta R.T.: 0.000 min
 Response: 65784438
 Conc: 375.41 ng/ml



#22 AR-1248-2

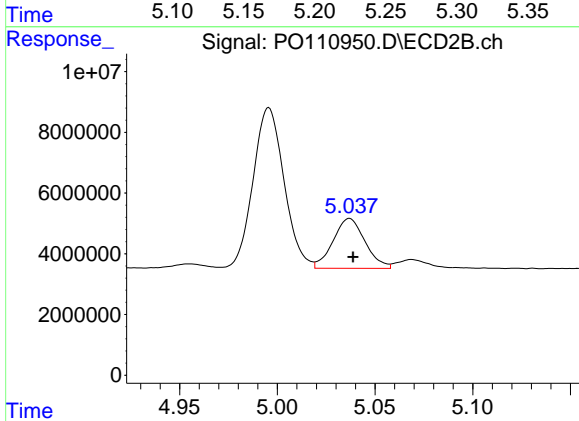
R.T.: 4.996 min
 Delta R.T.: -0.001 min
 Response: 58378682
 Conc: 432.04 ng/ml



#23 AR-1248-3

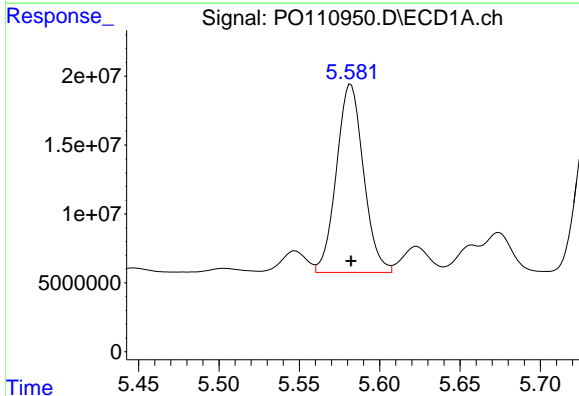
R.T.: 5.227 min
 Delta R.T.: -0.001 min
 Response: 41387665
 Conc: 187.73 ng/ml

Instrument :
 ECD_O
 ClientSampleId :
 AR1254CCC500



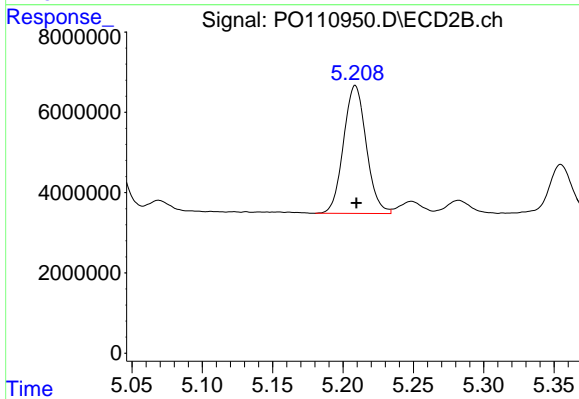
#23 AR-1248-3

R.T.: 5.037 min
 Delta R.T.: -0.002 min
 Response: 18715563
 Conc: 128.95 ng/ml



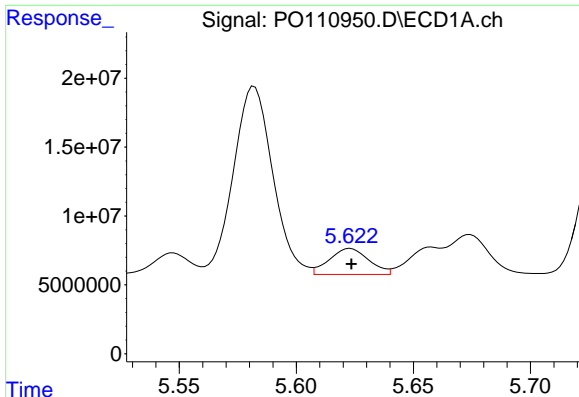
#24 AR-1248-4

R.T.: 5.582 min
 Delta R.T.: 0.000 min
 Response: 159993073
 Conc: 488.21 ng/ml



#24 AR-1248-4

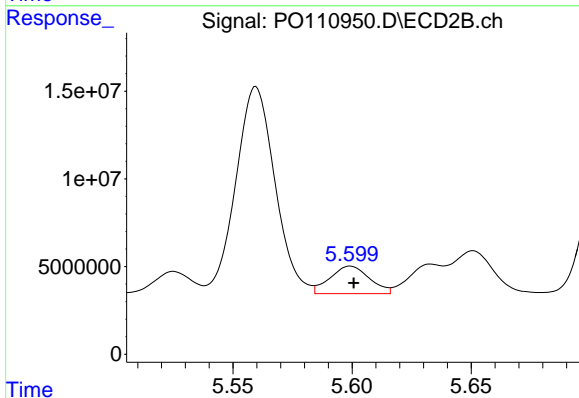
R.T.: 5.209 min
 Delta R.T.: 0.000 min
 Response: 35879984
 Conc: 214.19 ng/ml



#25 AR-1248-5

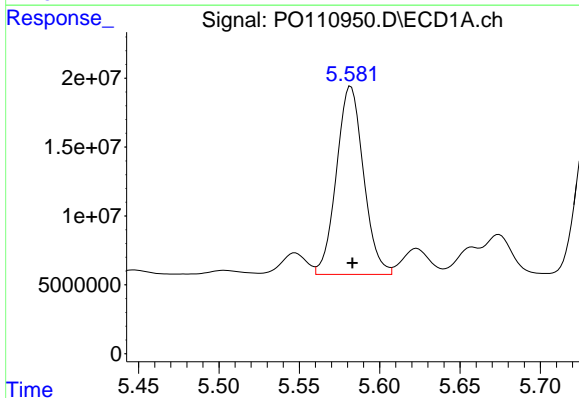
R.T.: 5.623 min
 Delta R.T.: 0.000 min
 Response: 22208503
 Conc: 95.13 ng/ml

Instrument :
 ECD_O
 ClientSampleId :
 AR1254CCC500



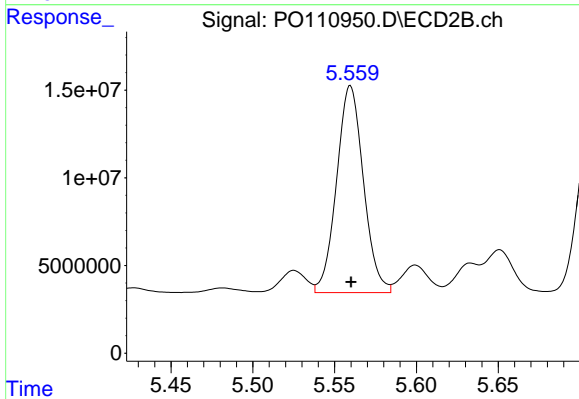
#25 AR-1248-5

R.T.: 5.599 min
 Delta R.T.: -0.001 min
 Response: 18052420
 Conc: 107.53 ng/ml



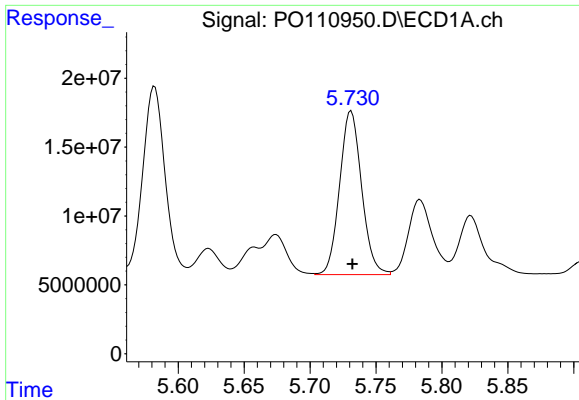
#26 AR-1254-1

R.T.: 5.582 min
 Delta R.T.: 0.000 min
 Response: 159993073
 Conc: 473.95 ng/ml



#26 AR-1254-1

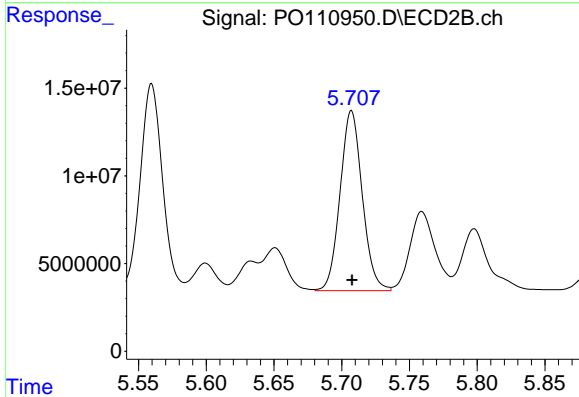
R.T.: 5.560 min
 Delta R.T.: 0.000 min
 Response: 134692775
 Conc: 536.57 ng/ml



#27 AR-1254-2

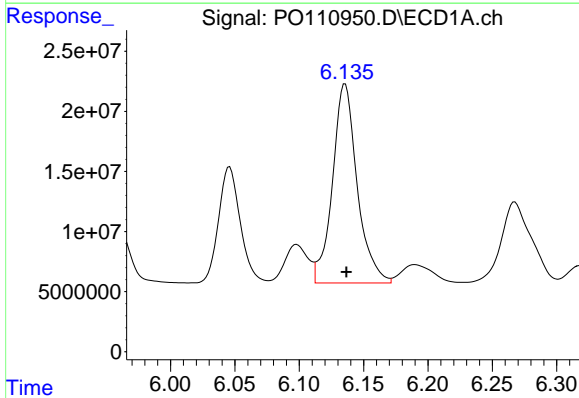
R.T.: 5.731 min
 Delta R.T.: 0.000 min
 Response: 138041221
 Conc: 479.81 ng/ml

Instrument :
 ECD_O
 ClientSampleId :
 AR1254CCC500



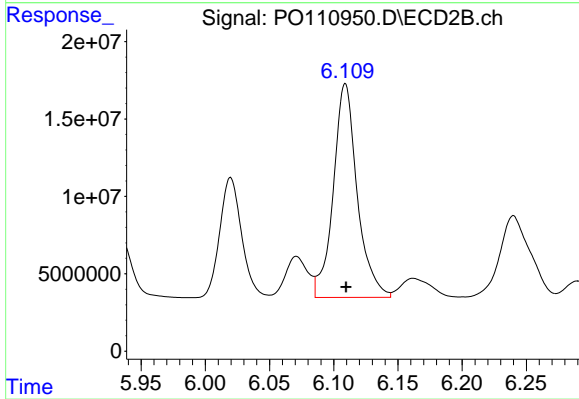
#27 AR-1254-2

R.T.: 5.707 min
 Delta R.T.: 0.000 min
 Response: 116962245
 Conc: 536.07 ng/ml



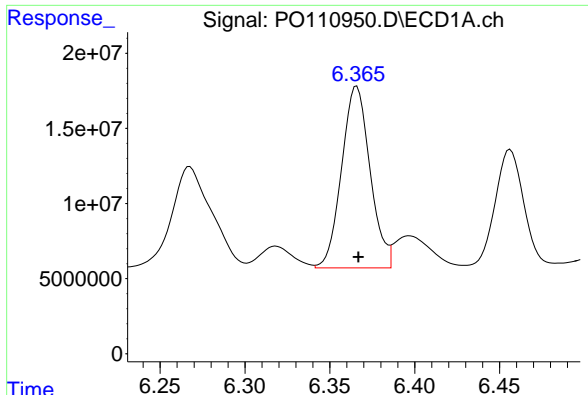
#28 AR-1254-3

R.T.: 6.136 min
 Delta R.T.: 0.000 min
 Response: 221612716
 Conc: 484.61 ng/ml



#28 AR-1254-3

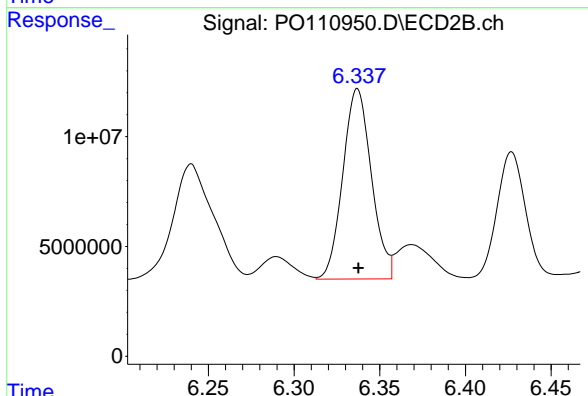
R.T.: 6.109 min
 Delta R.T.: 0.000 min
 Response: 179057965
 Conc: 535.77 ng/ml



#29 AR-1254-4

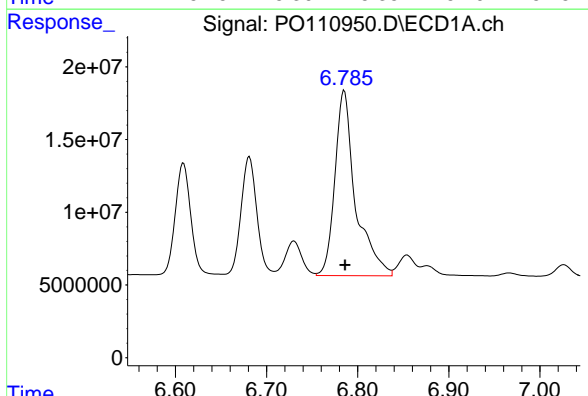
R.T.: 6.366 min
 Delta R.T.: 0.000 min
 Response: 141032469
 Conc: 462.67 ng/ml

Instrument :
 ECD_O
 ClientSampleId :
 AR1254CCC500



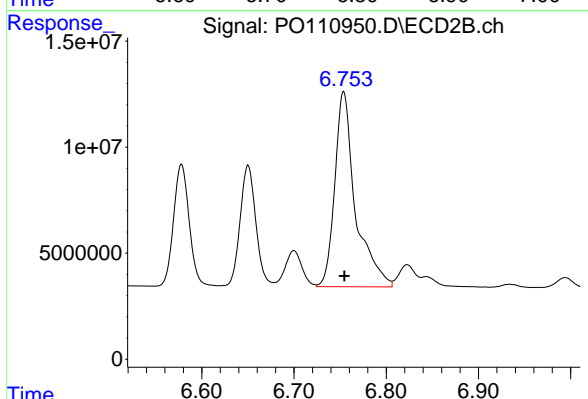
#29 AR-1254-4

R.T.: 6.337 min
 Delta R.T.: 0.000 min
 Response: 100709365
 Conc: 518.69 ng/ml



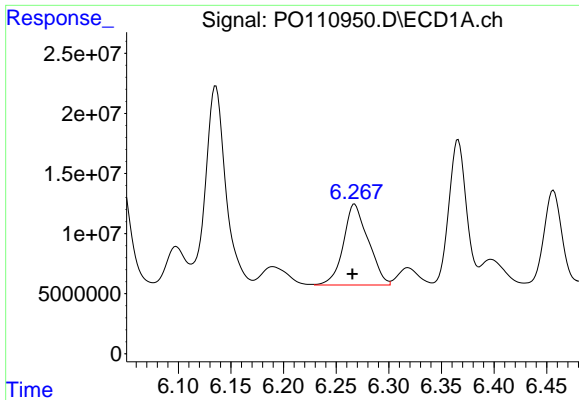
#30 AR-1254-5

R.T.: 6.785 min
 Delta R.T.: 0.000 min
 Response: 200484626
 Conc: 475.21 ng/ml



#30 AR-1254-5

R.T.: 6.754 min
 Delta R.T.: 0.000 min
 Response: 143003158
 Conc: 533.04 ng/ml

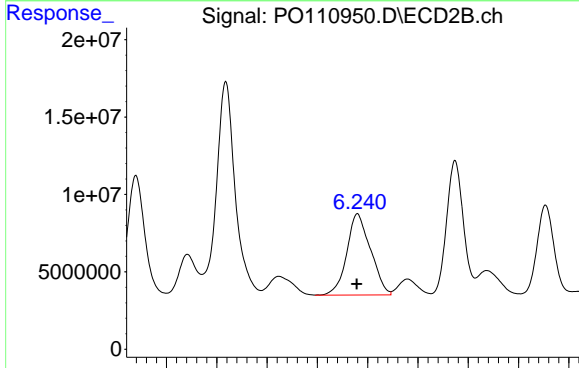


#31 AR-1260-1

R.T.: 6.267 min
 Delta R.T.: 0.002 min
 Response: 110696608
 Conc: 332.80 ng/ml

Instrument :
 ECD_O
 ClientSampleId :
 AR1254CCC500

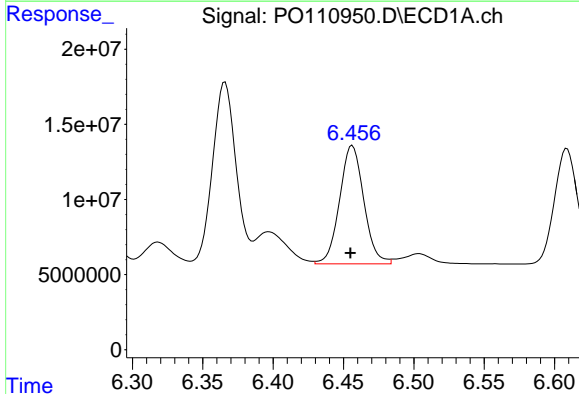
Time 6.10 6.15 6.20 6.25 6.30 6.35 6.40 6.45



#31 AR-1260-1

R.T.: 6.240 min
 Delta R.T.: 0.000 min
 Response: 86229110
 Conc: 390.58 ng/ml

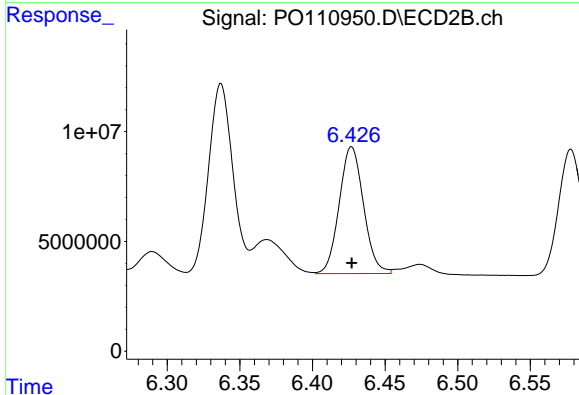
Time 6.05 6.10 6.15 6.20 6.25 6.30 6.35 6.40



#32 AR-1260-2

R.T.: 6.456 min
 Delta R.T.: 0.001 min
 Response: 94537802
 Conc: 227.90 ng/ml

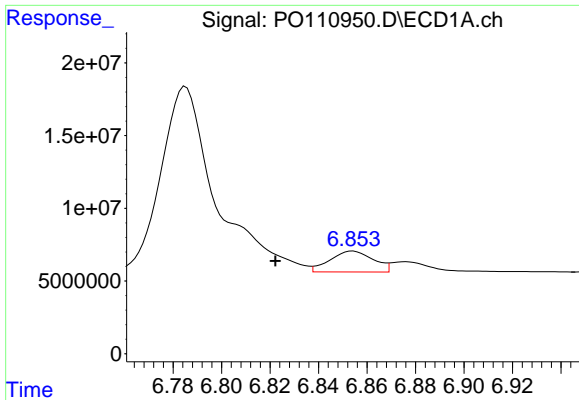
Time 6.30 6.35 6.40 6.45 6.50 6.55 6.60



#32 AR-1260-2

R.T.: 6.427 min
 Delta R.T.: 0.000 min
 Response: 67337989
 Conc: 261.78 ng/ml

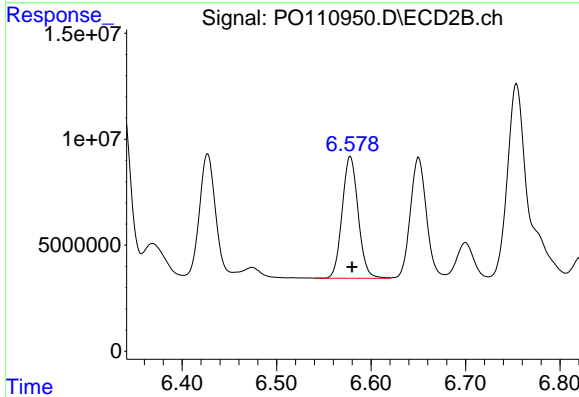
Time 6.30 6.35 6.40 6.45 6.50 6.55



#33 AR-1260-3

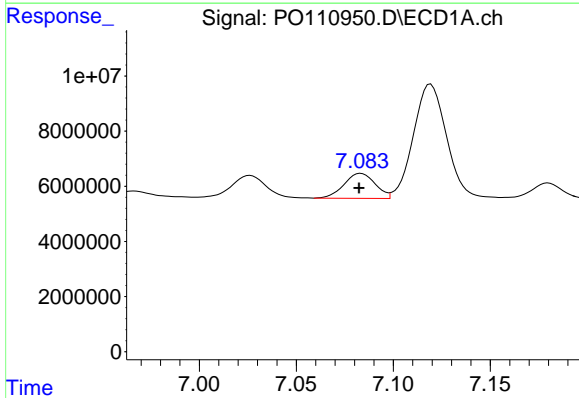
R.T.: 6.854 min
 Delta R.T.: 0.032 min
 Response: 17798810
 Conc: 50.53 ng/ml

Instrument :
 ECD_O
 ClientSampleId :
 AR1254CCC500



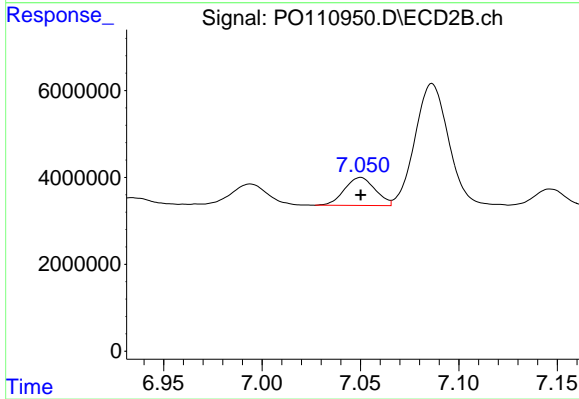
#33 AR-1260-3

R.T.: 6.578 min
 Delta R.T.: -0.002 min
 Response: 67702808
 Conc: 290.39 ng/ml



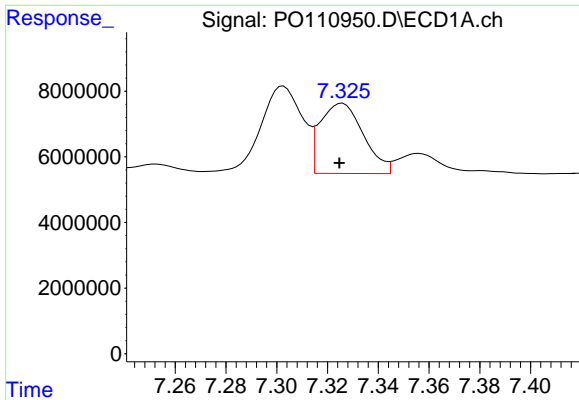
#34 AR-1260-4

R.T.: 7.083 min
 Delta R.T.: 0.000 min
 Response: 10159896
 Conc: 33.39 ng/ml



#34 AR-1260-4

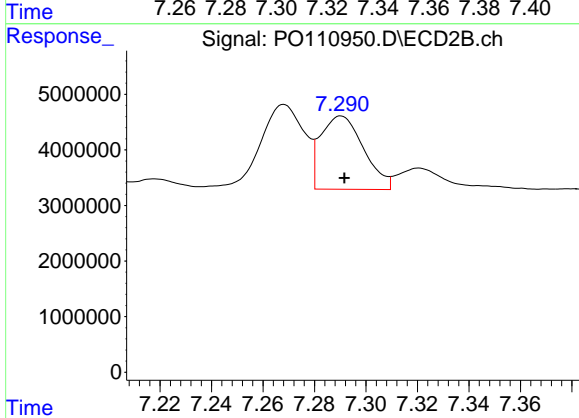
R.T.: 7.050 min
 Delta R.T.: 0.000 min
 Response: 7010646
 Conc: 38.50 ng/ml



#35 AR-1260-5

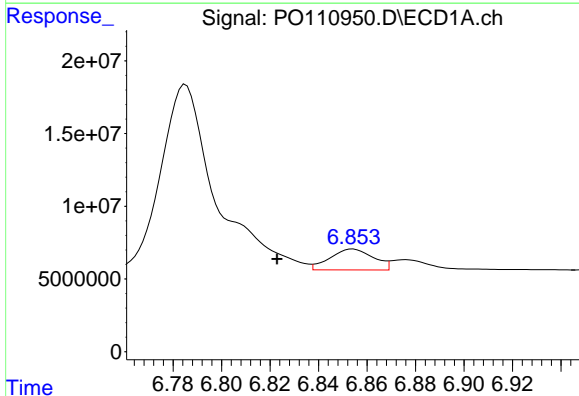
R.T.: 7.326 min
 Delta R.T.: 0.001 min
 Response: 25260247
 Conc: 34.40 ng/ml

Instrument :
 ECD_O
 ClientSampleId :
 AR1254CCC500



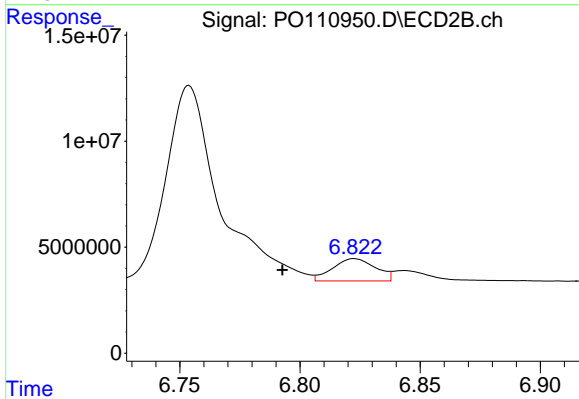
#35 AR-1260-5

R.T.: 7.290 min
 Delta R.T.: -0.001 min
 Response: 15284992
 Conc: 38.87 ng/ml



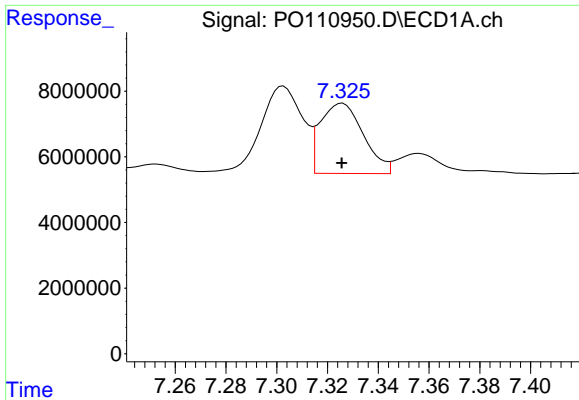
#36 AR-1262-1

R.T.: 6.854 min
 Delta R.T.: 0.031 min
 Response: 17798810
 Conc: 38.66 ng/ml



#36 AR-1262-1

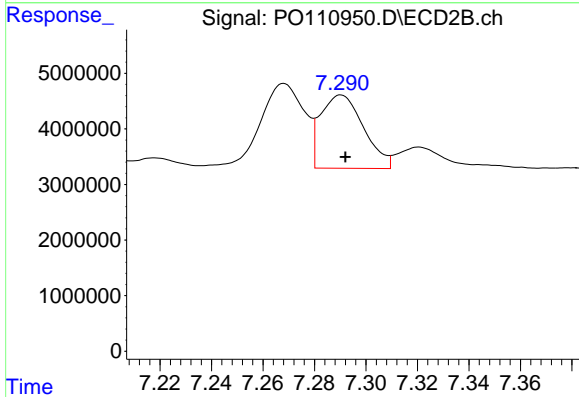
R.T.: 6.823 min
 Delta R.T.: 0.030 min
 Response: 13067243
 Conc: 46.27 ng/ml



#37 AR-1262-2

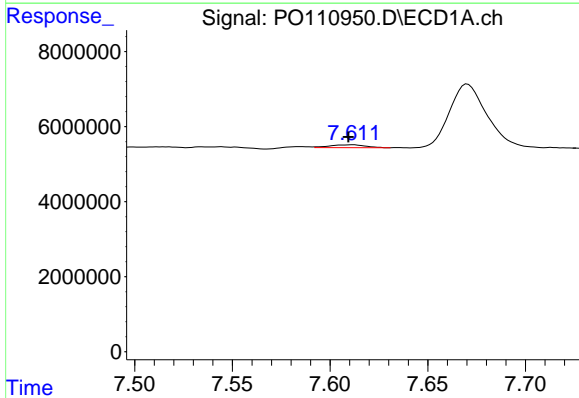
R.T.: 7.326 min
 Delta R.T.: 0.000 min
 Response: 25260247
 Conc: 32.12 ng/ml

Instrument :
 ECD_O
 ClientSampleId :
 AR1254CCC500



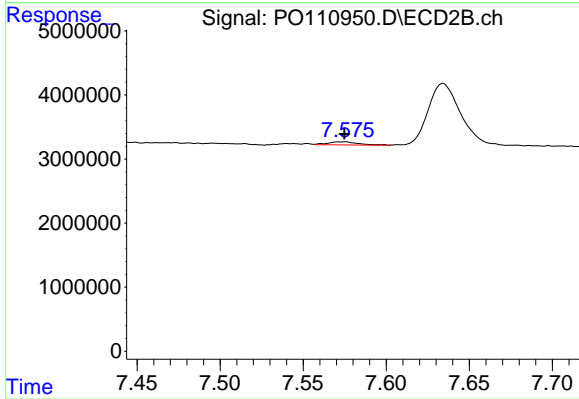
#37 AR-1262-2

R.T.: 7.290 min
 Delta R.T.: -0.002 min
 Response: 15284992
 Conc: 34.79 ng/ml



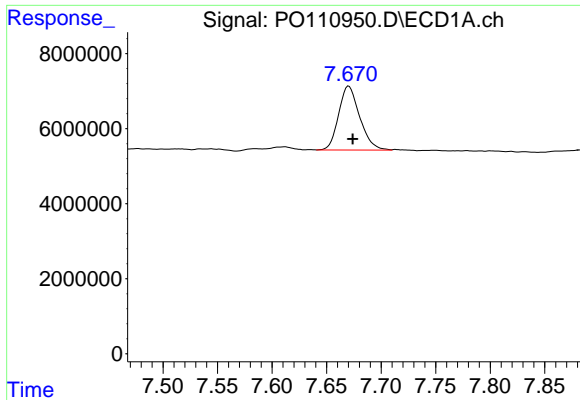
#38 AR-1262-3

R.T.: 7.611 min
 Delta R.T.: 0.002 min
 Response: 972497
 Conc: 2.91 ng/ml



#38 AR-1262-3

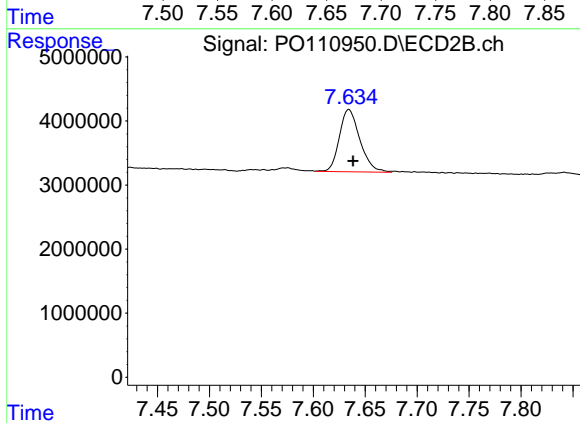
R.T.: 7.575 min
 Delta R.T.: 0.000 min
 Response: 620092
 Conc: 3.82 ng/ml



#39 AR-1262-4

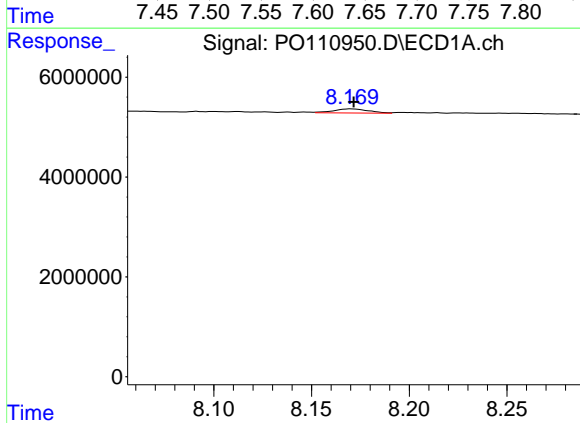
R.T.: 7.670 min
 Delta R.T.: -0.004 min
 Response: 22880081
 Conc: 39.55 ng/ml

Instrument :
 ECD_O
 ClientSampleId :
 AR1254CCC500



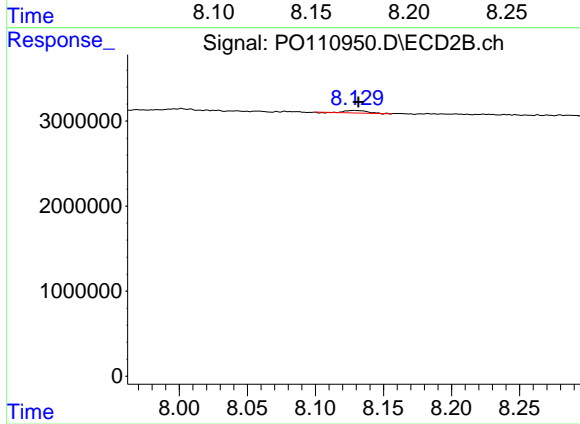
#39 AR-1262-4

R.T.: 7.634 min
 Delta R.T.: -0.004 min
 Response: 13385060
 Conc: 45.98 ng/ml



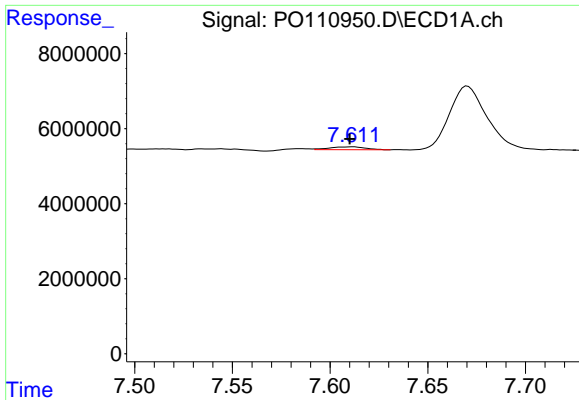
#40 AR-1262-5

R.T.: 8.170 min
 Delta R.T.: -0.001 min
 Response: 998653
 Conc: 3.74 ng/ml



#40 AR-1262-5

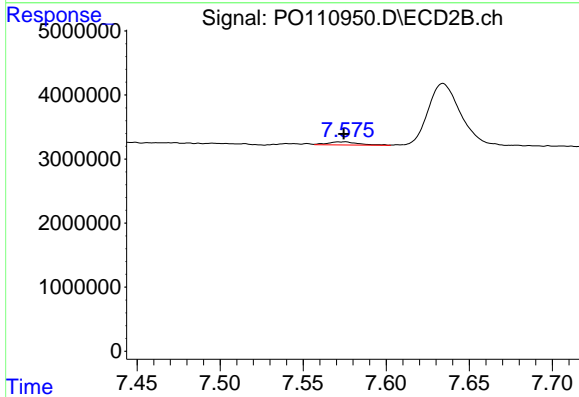
R.T.: 8.129 min
 Delta R.T.: -0.003 min
 Response: 336027
 Conc: 3.41 ng/ml



#41 AR-1268-1

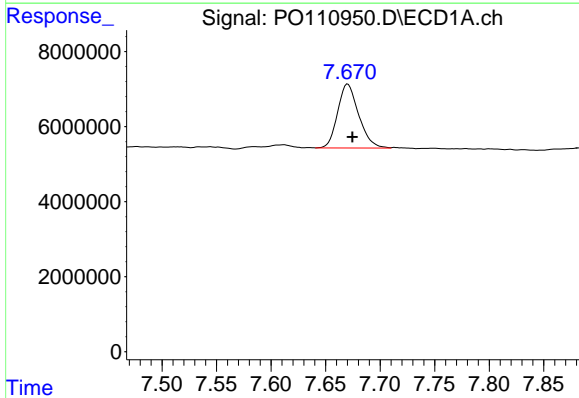
R.T.: 7.611 min
 Delta R.T.: 0.001 min
 Response: 972497
 Conc: 1.09 ng/ml

Instrument :
 ECD_O
 ClientSampleId :
 AR1254CCC500



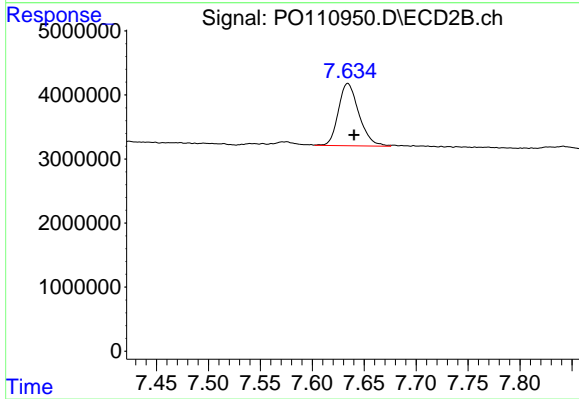
#41 AR-1268-1

R.T.: 7.575 min
 Delta R.T.: 0.000 min
 Response: 620092
 Conc: 1.44 ng/ml



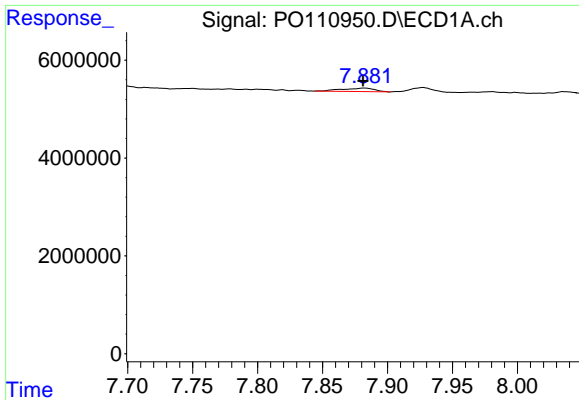
#42 AR-1268-2

R.T.: 7.670 min
 Delta R.T.: -0.004 min
 Response: 22880081
 Conc: 28.51 ng/ml



#42 AR-1268-2

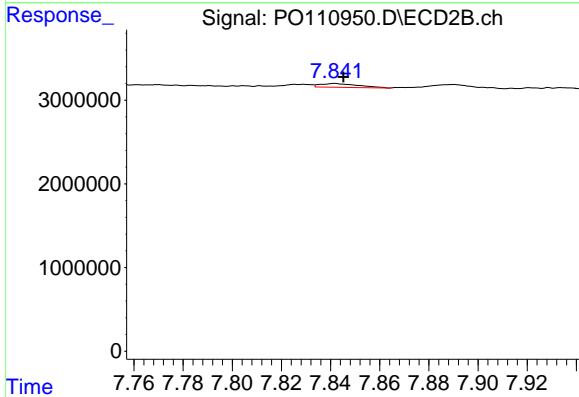
R.T.: 7.634 min
 Delta R.T.: -0.006 min
 Response: 13385060
 Conc: 34.87 ng/ml



#43 AR-1268-3

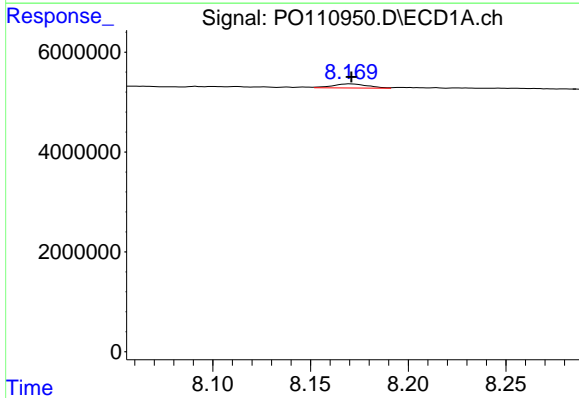
R.T.: 7.882 min
 Delta R.T.: 0.001 min
 Response: 1251056
 Conc: 1.82 ng/ml

Instrument :
 ECD_O
 ClientSampleId :
 AR1254CCC500



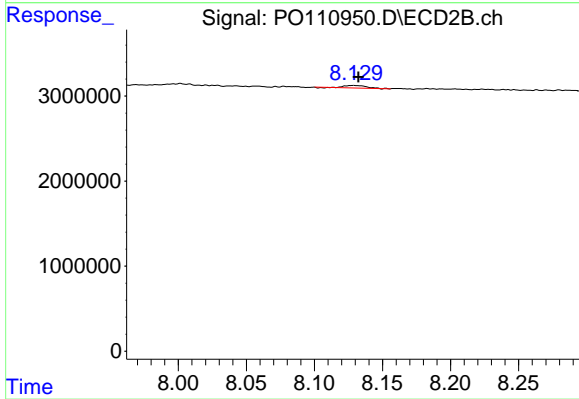
#43 AR-1268-3

R.T.: 7.842 min
 Delta R.T.: -0.003 min
 Response: 489390
 Conc: 1.72 ng/ml



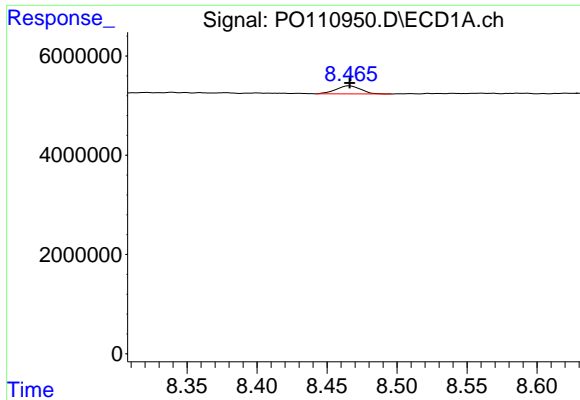
#44 AR-1268-4

R.T.: 8.170 min
 Delta R.T.: 0.000 min
 Response: 998653
 Conc: 3.59 ng/ml



#44 AR-1268-4

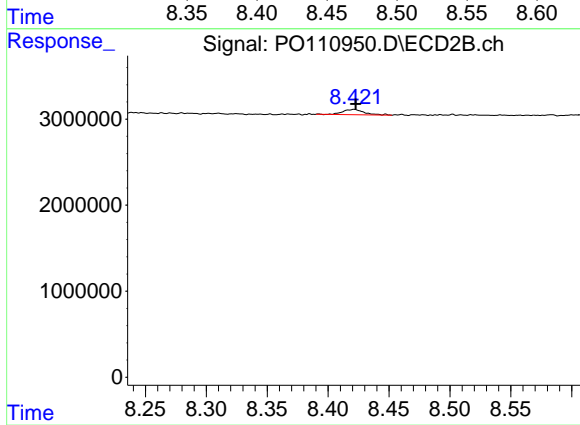
R.T.: 8.129 min
 Delta R.T.: -0.003 min
 Response: 336027
 Conc: 3.23 ng/ml



#45 AR-1268-5

R.T.: 8.466 min
 Delta R.T.: 0.000 min
 Response: 1974858
 Conc: 0.97 ng/ml

Instrument :
 ECD_O
 ClientSampleId :
 AR1254CCC500



#45 AR-1268-5

R.T.: 8.421 min
 Delta R.T.: -0.001 min
 Response: 775711
 Conc: 1.28 ng/ml