

Data Path : Z:\pestpcbsrv\HPCHEM1\ECD_0\Data\P0050825\
 Data File : PO110951.D
 Signal(s) : Signal #1: ECD1A.ch Signal #2: ECD2B.ch
 Acq On : 08 May 2025 11:12
 Operator : YP/AJ
 Sample : I.BLK
 Misc :
 ALS Vial : 2 Sample Multiplier: 1

Instrument :
 ECD_0
 ClientSampleId :
 I.BLK

Integration File signal 1: autoint1.e
 Integration File signal 2: autoint2.e
 Quant Time: May 08 13:11:00 2025
 Quant Method : Z:\pestpcbsrv\HPCHEM1\ECD_0\methods\P0050225.M
 Quant Title : GC EXTRACTABLES
 QLast Update : Fri May 02 23:47:49 2025
 Response via : Initial Calibration
 Integrator: ChemStation

Volume Inj. : 2 µl
 Signal #1 Phase : ZB-MR1 Signal #2 Phase: ZB-MR2
 Signal #1 Info : 30Mx0.32mmx 0.50µ Signal #2 Info : 30M x 0.32mm x 0.25µm

Compound	RT#1	RT#2	Resp#1	Resp#2	ng/ml	ng/ml
System Monitoring Compounds						
1) SA Tetrachlo...	3.684	3.680	91507097	82274962	15.995	16.988
2) SA Decachlor...	8.726	8.675	87352732	30397318	14.314	18.016 #
Target Compounds						
3) L1 AR-1016-1	4.782	4.767	1511813	1359114	6.840	8.554 #
4) L1 AR-1016-2	4.782	4.767	1511813	1359114	4.874	5.946
5) L1 AR-1016-3	4.841	4.958	195836	48940	0.856	0.401 #
6) L1 AR-1016-4	4.968	5.002	94520	670780	0.565	6.657 #
7) L1 AR-1016-5	5.222	5.219	110018	184017	0.618	1.400 #
8) L2 AR-1221-1	3.906	3.894	227005	153403	2.607	2.305
9) L2 AR-1221-2	3.984	3.978	1662419	1428815	24.552	27.835
10) L2 AR-1221-3	4.060	4.059	80160	106778	0.405	0.698 #
11) L3 AR-1232-1	4.060	4.059	80160	106778	0.522	0.909 #
12) L3 AR-1232-2	4.554	4.767	125447	1359114	1.523	11.815 #
13) L3 AR-1232-3	4.782	4.958	1511813	48940	9.503	0.812 #
14) L3 AR-1232-4	4.968	5.033	94520	279402	1.123	5.015 #
15) L3 AR-1232-5	5.021	5.219	740399	184017	12.576	3.126 #
16) L4 AR-1242-1	4.782	4.767	1511813	1359114	8.220	10.271
17) L4 AR-1242-2	4.782	4.767	1511813	1359114	5.869	7.150
18) L4 AR-1242-3	4.841	4.958	195836	48940	1.075	0.483 #
19) L4 AR-1242-4	4.968	5.033	94520	279402	0.677	2.694 #
20) L4 AR-1242-5	5.623	5.542	614592	155837	3.942	1.231 #
21) L5 AR-1248-1	4.782	4.767	1511813	1359114	11.509	14.102
22) L5 AR-1248-2	5.021	5.002	740399	670780	4.225	4.964
23) L5 AR-1248-3	5.230	5.033	362509	279402	1.644	1.925
24) L5 AR-1248-4	5.581	5.219	515953	184017	1.574	1.099 #
25) L5 AR-1248-5	5.623	5.611	614592	430046	2.633	2.562
26) L6 AR-1254-1	5.581	5.542	515953	155837	1.528	0.621 #
27) L6 AR-1254-2	5.735	5.703	206067	222545	0.716	1.020 #
28) L6 AR-1254-3	6.132	6.095	838294	456026	1.833	1.364 #
29) L6 AR-1254-4	6.366	6.338	1246369	451990	4.089	2.328 #
30) L6 AR-1254-5	6.770	6.757	1112611	195047	2.637	0.727 #
31) L7 AR-1260-1	6.261	6.236	736848	201671	2.215	0.913 #
32) L7 AR-1260-2	6.430	6.403	1931428	530804	4.656	2.064 #
33) L7 AR-1260-3	6.815	6.595	1994238	112301	5.661	0.482 #
34) L7 AR-1260-4	7.098	7.020	1074511	704120	3.532	3.867
35) L7 AR-1260-5	7.328	7.298	481272	1989265	0.655	5.059 #
36) L8 AR-1262-1	6.815	6.783	1994238	205974	4.331	0.729 #
37) L8 AR-1262-2	7.328	7.298	481272	1989265	0.612	4.528 #
38) L8 AR-1262-3	7.616	7.575	376866	352276	1.128	2.170 #
39) L8 AR-1262-4	7.665	7.633	131028	245248	0.226	0.842 #
40) L8 AR-1262-5	8.175	8.162	130937	179921	0.491	1.825 #
41) L9 AR-1268-1	7.616	7.575	376866	352276	0.424	0.817 #

Data Path : Z:\pestpcbsrv\HPCHEM1\ECD_0\Data\P0050825\
 Data File : P0110951.D
 Signal(s) : Signal #1: ECD1A.ch Signal #2: ECD2B.ch
 Acq On : 08 May 2025 11:12
 Operator : YP/AJ
 Sample : I.BLK
 Misc :
 ALS Vial : 2 Sample Multiplier: 1

Instrument :
 ECD_0
 ClientSampleId :
 I.BLK

Integration File signal 1: autoint1.e
 Integration File signal 2: autoint2.e
 Quant Time: May 08 13:11:00 2025
 Quant Method : Z:\pestpcbsrv\HPCHEM1\ECD_0\methods\P0050225.M
 Quant Title : GC EXTRACTABLES
 QLast Update : Fri May 02 23:47:49 2025
 Response via : Initial Calibration
 Integrator: ChemStation

Volume Inj. : 2 µl
 Signal #1 Phase : ZB-MR1 Signal #2 Phase: ZB-MR2
 Signal #1 Info : 30Mx0.32mmx 0.50µ Signal #2 Info : 30M x 0.32mm x 0.25µm

	Compound	RT#1	RT#2	Resp#1	Resp#2	ng/ml	ng/ml
42)	L9 AR-1268-2	7.685	7.644	25489	259115	0.032	0.675 #
43)	L9 AR-1268-3	7.872	7.827	1700289	459347	2.477	1.617 #
44)	L9 AR-1268-4	8.175	8.162	130937	179921	0.471	1.728 #
45)	L9 AR-1268-5	8.460	8.423	653195	186296	0.320	0.307

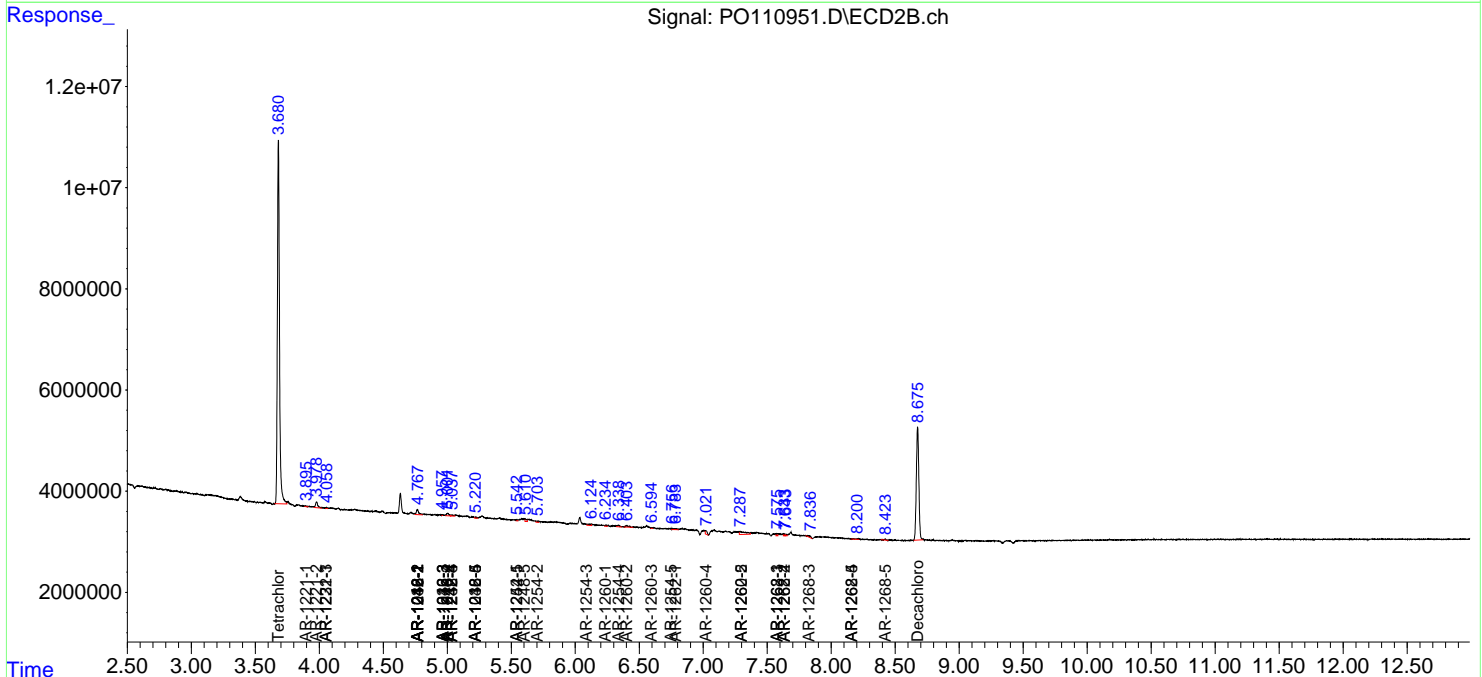
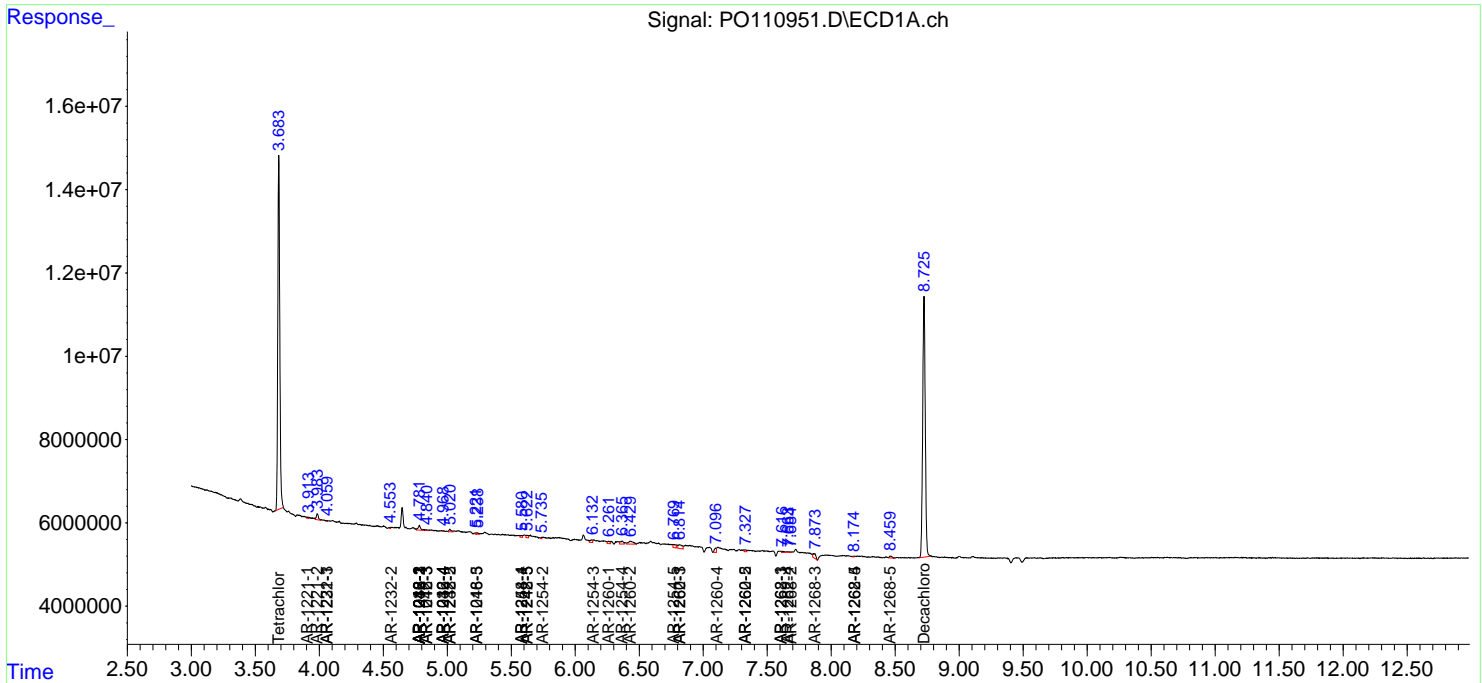
(f)=RT Delta > 1/2 Window (#)=Amounts differ by > 25% (m)=manual int.

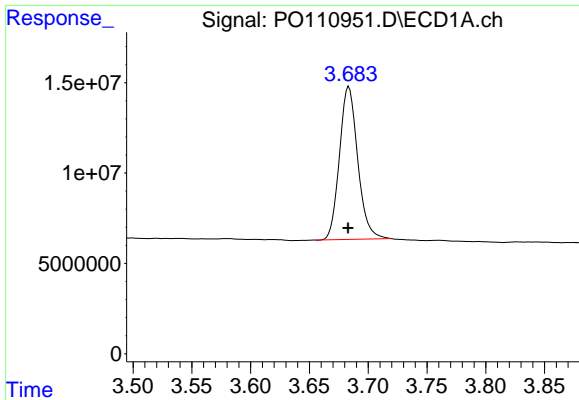
Data Path : Z:\pestpcbsrv\HPCHEM1\ECD_O\Data\PO050825\
 Data File : PO110951.D
 Signal(s) : Signal #1: ECD1A.ch Signal #2: ECD2B.ch
 Acq On : 08 May 2025 11:12
 Operator : YP/AJ
 Sample : I.BLK
 Misc :
 ALS Vial : 2 Sample Multiplier: 1

Instrument :
 ECD_O
 ClientSampleId :
 I.BLK

Integration File signal 1: autoint1.e
 Integration File signal 2: autoint2.e
 Quant Time: May 08 13:11:00 2025
 Quant Method : Z:\pestpcbsrv\HPCHEM1\ECD_O\methods\PO050225.M
 Quant Title : GC EXTRACTABLES
 QLast Update : Fri May 02 23:47:49 2025
 Response via : Initial Calibration
 Integrator: ChemStation

Volume Inj. : 2 µl
 Signal #1 Phase : ZB-MR1 Signal #2 Phase: ZB-MR2
 Signal #1 Info : 30Mx0.32mmx 0.50µ Signal #2 Info : 30M x 0.32mm x 0.25µm

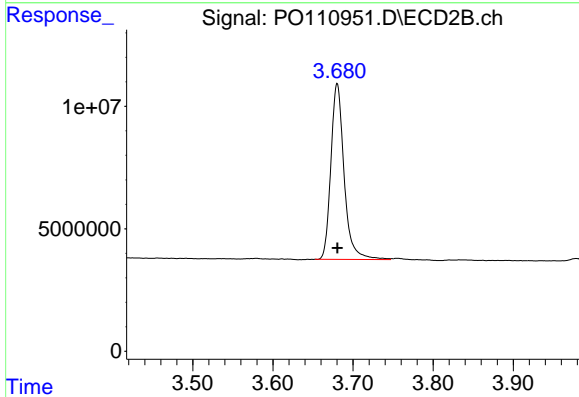




#1 Tetrachloro-m-xylene

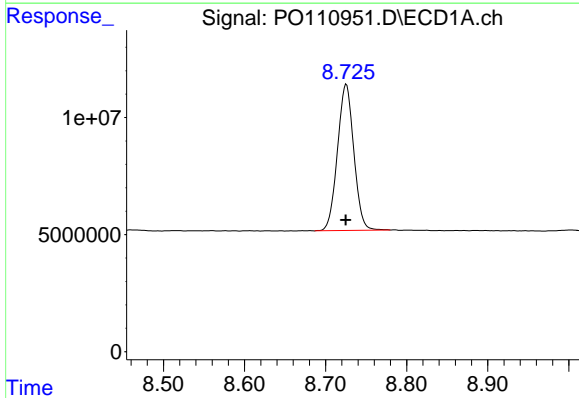
R.T.: 3.684 min
 Delta R.T.: 0.000 min
 Response: 91507097
 Conc: 16.00 ng/ml

Instrument :
 ECD_O
 ClientSampleId :
 I.BLK



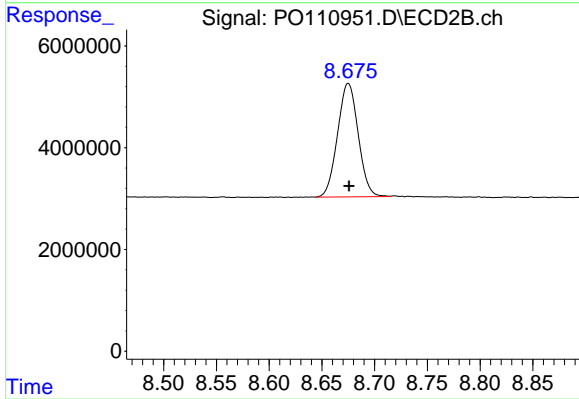
#1 Tetrachloro-m-xylene

R.T.: 3.680 min
 Delta R.T.: 0.000 min
 Response: 82274962
 Conc: 16.99 ng/ml



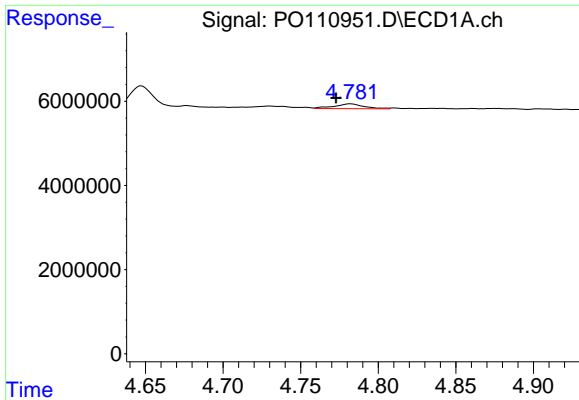
#2 Decachlorobiphenyl

R.T.: 8.726 min
 Delta R.T.: 0.000 min
 Response: 87352732
 Conc: 14.31 ng/ml



#2 Decachlorobiphenyl

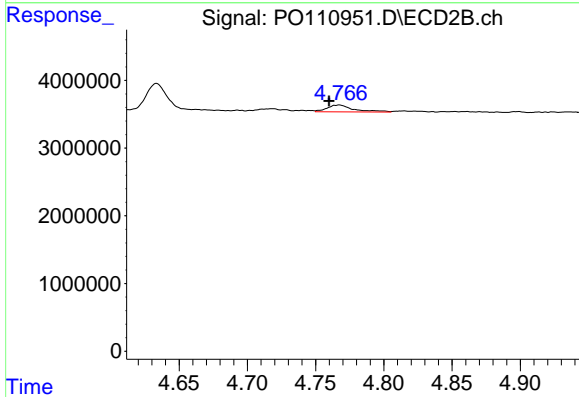
R.T.: 8.675 min
 Delta R.T.: 0.000 min
 Response: 30397318
 Conc: 18.02 ng/ml



#3 AR-1016-1

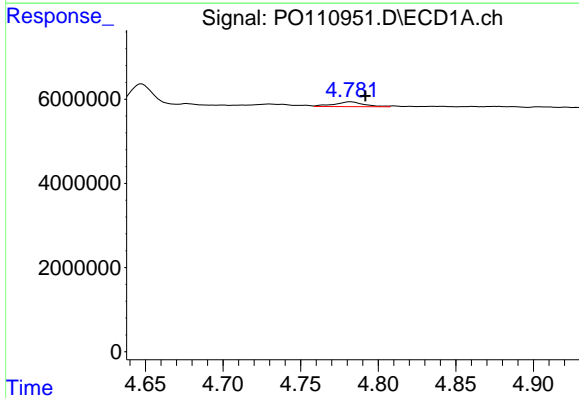
R.T.: 4.782 min
 Delta R.T.: 0.010 min
 Response: 1511813
 Conc: 6.84 ng/ml

Instrument :
 ECD_O
 ClientSampleId :
 I.BLK



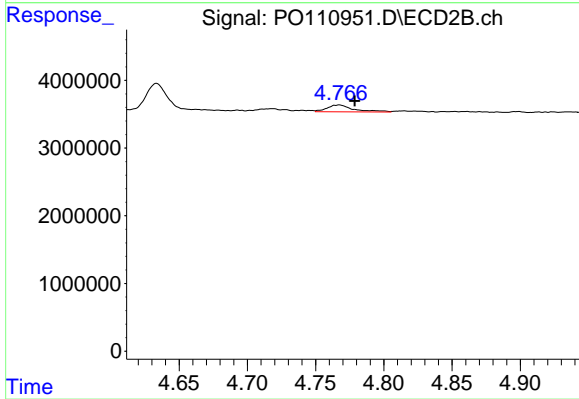
#3 AR-1016-1

R.T.: 4.767 min
 Delta R.T.: 0.007 min
 Response: 1359114
 Conc: 8.55 ng/ml



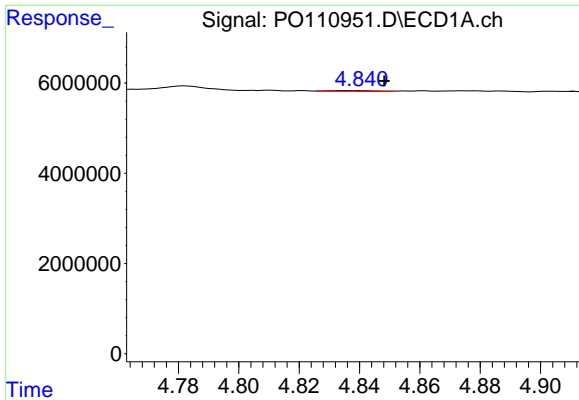
#4 AR-1016-2

R.T.: 4.782 min
 Delta R.T.: -0.010 min
 Response: 1511813
 Conc: 4.87 ng/ml



#4 AR-1016-2

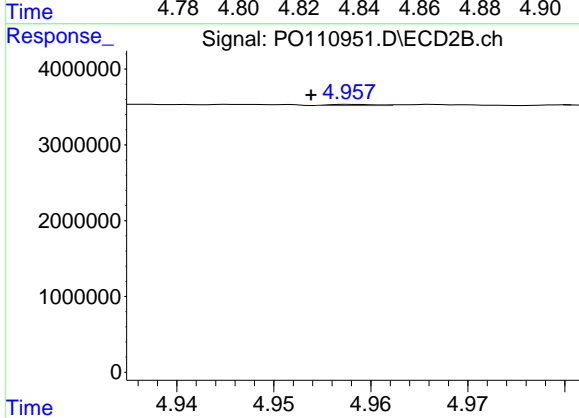
R.T.: 4.767 min
 Delta R.T.: -0.011 min
 Response: 1359114
 Conc: 5.95 ng/ml



#5 AR-1016-3

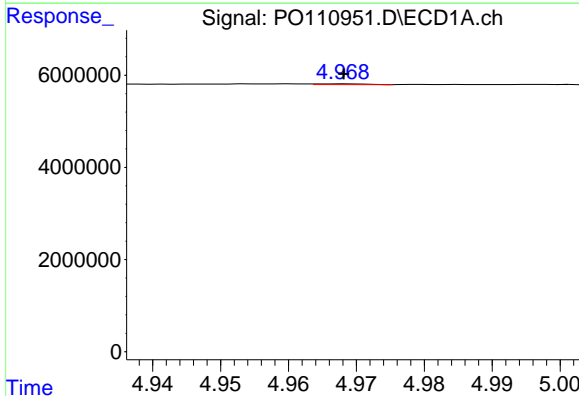
R.T.: 4.841 min
 Delta R.T.: -0.007 min
 Response: 195836
 Conc: 0.86 ng/ml

Instrument :
 ECD_O
 ClientSampleId :
 I.BLK



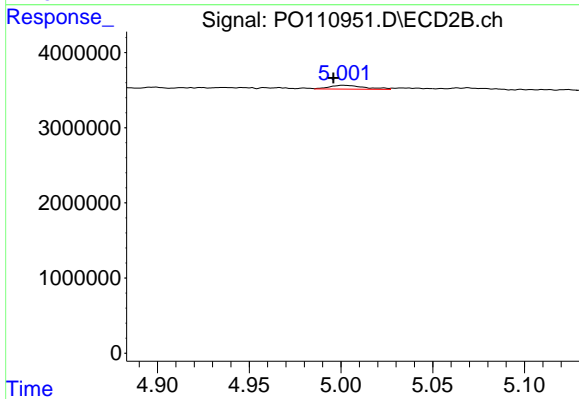
#5 AR-1016-3

R.T.: 4.958 min
 Delta R.T.: 0.005 min
 Response: 48940
 Conc: 0.40 ng/ml



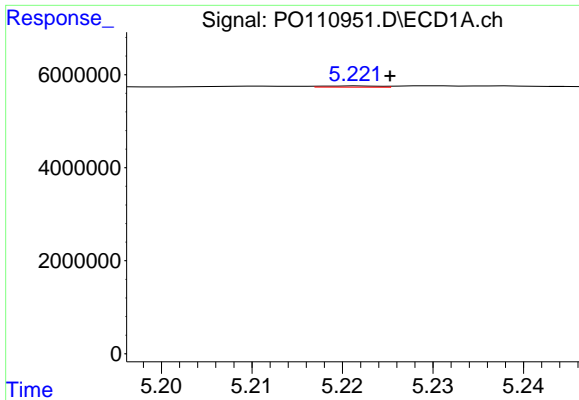
#6 AR-1016-4

R.T.: 4.968 min
 Delta R.T.: 0.000 min
 Response: 94520
 Conc: 0.57 ng/ml



#6 AR-1016-4

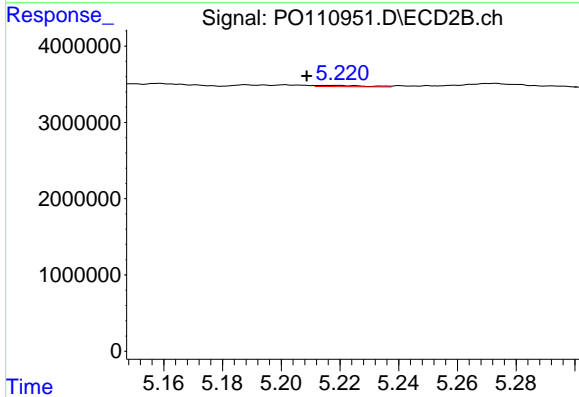
R.T.: 5.002 min
 Delta R.T.: 0.006 min
 Response: 670780
 Conc: 6.66 ng/ml



#7 AR-1016-5

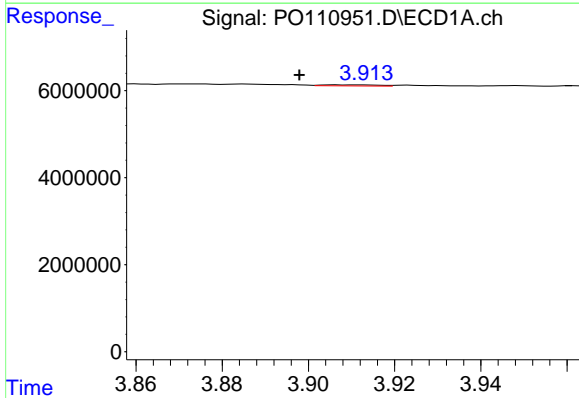
R.T.: 5.222 min
 Delta R.T.: -0.004 min
 Response: 110018
 Conc: 0.62 ng/ml

Instrument :
 ECD_O
 ClientSampleId :
 I.BLK



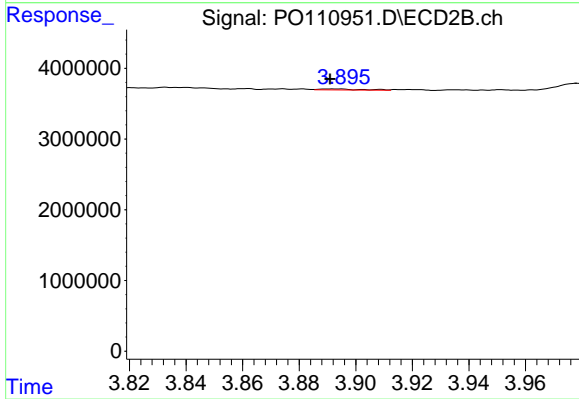
#7 AR-1016-5

R.T.: 5.219 min
 Delta R.T.: 0.010 min
 Response: 184017
 Conc: 1.40 ng/ml



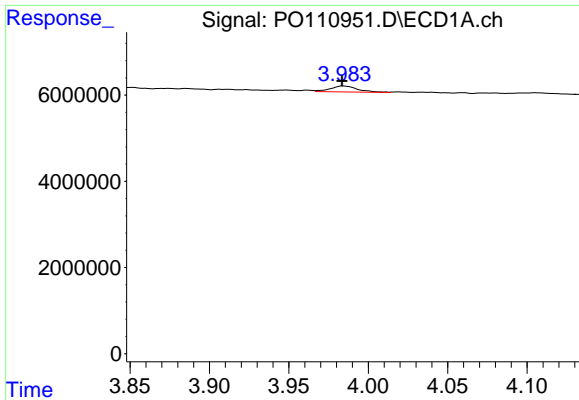
#8 AR-1221-1

R.T.: 3.906 min
 Delta R.T.: 0.008 min
 Response: 227005
 Conc: 2.61 ng/ml



#8 AR-1221-1

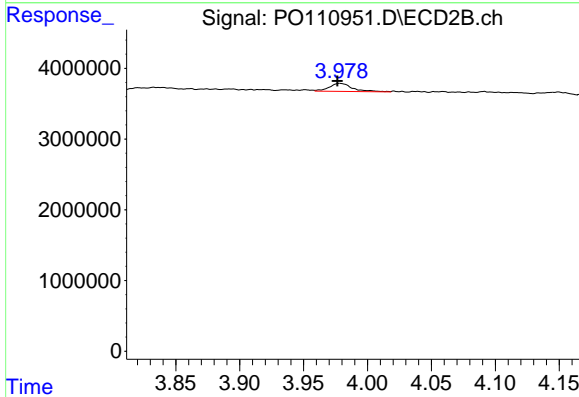
R.T.: 3.894 min
 Delta R.T.: 0.003 min
 Response: 153403
 Conc: 2.30 ng/ml



#9 AR-1221-2

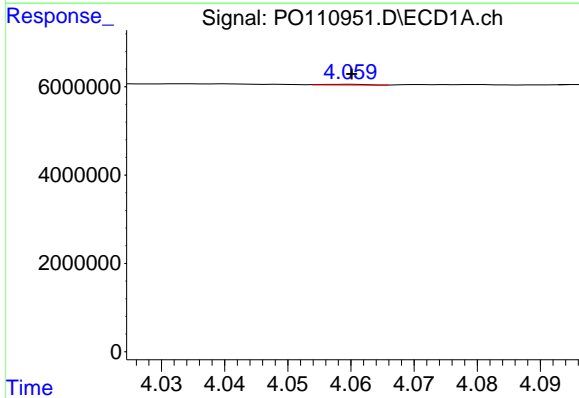
R.T.: 3.984 min
 Delta R.T.: 0.000 min
 Response: 1662419
 Conc: 24.55 ng/ml

Instrument :
 ECD_O
 ClientSampleId :
 I.BLK



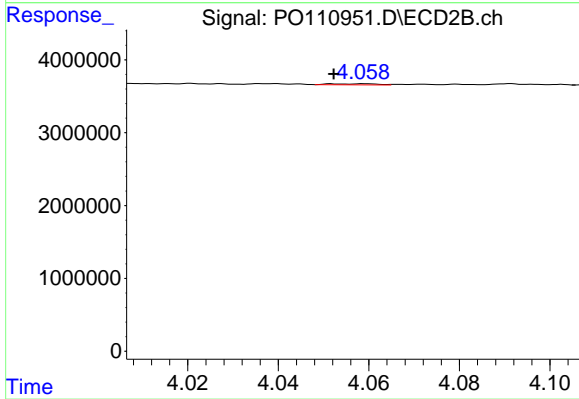
#9 AR-1221-2

R.T.: 3.978 min
 Delta R.T.: 0.002 min
 Response: 1428815
 Conc: 27.84 ng/ml



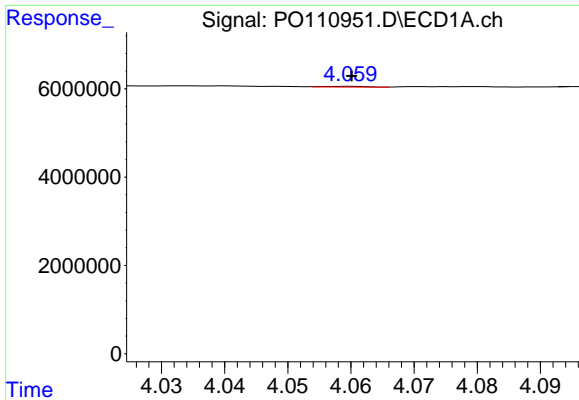
#10 AR-1221-3

R.T.: 4.060 min
 Delta R.T.: 0.000 min
 Response: 80160
 Conc: 0.41 ng/ml



#10 AR-1221-3

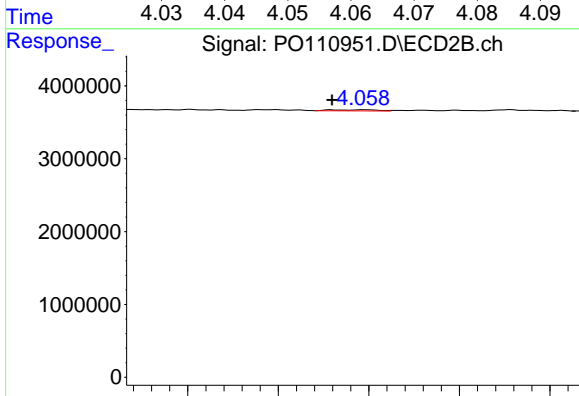
R.T.: 4.059 min
 Delta R.T.: 0.007 min
 Response: 106778
 Conc: 0.70 ng/ml



#11 AR-1232-1

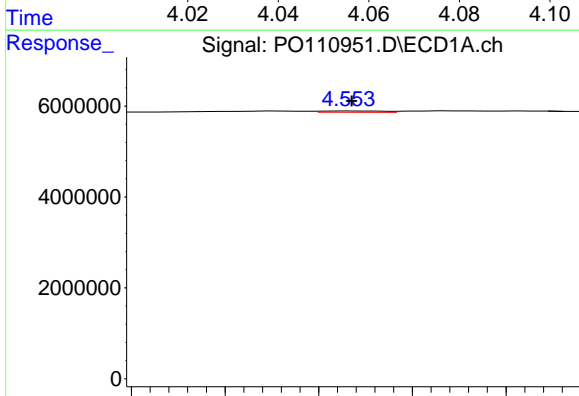
R.T.: 4.060 min
 Delta R.T.: 0.000 min
 Response: 80160
 Conc: 0.52 ng/ml

Instrument :
 ECD_O
 ClientSampleId :
 I.BLK



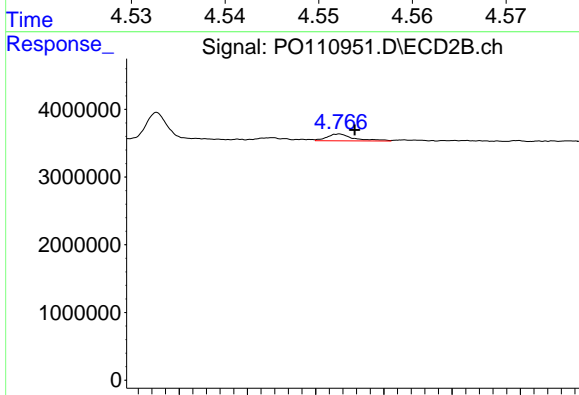
#11 AR-1232-1

R.T.: 4.059 min
 Delta R.T.: 0.007 min
 Response: 106778
 Conc: 0.91 ng/ml



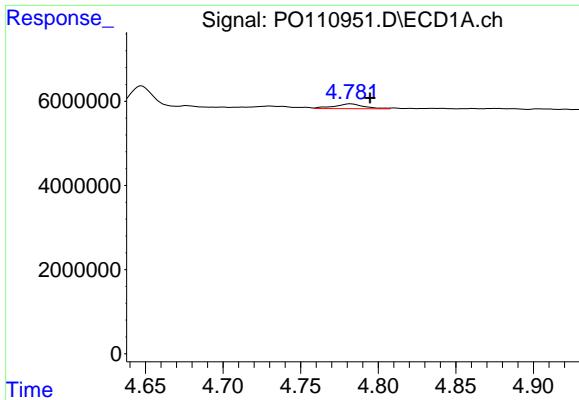
#12 AR-1232-2

R.T.: 4.554 min
 Delta R.T.: 0.000 min
 Response: 125447
 Conc: 1.52 ng/ml



#12 AR-1232-2

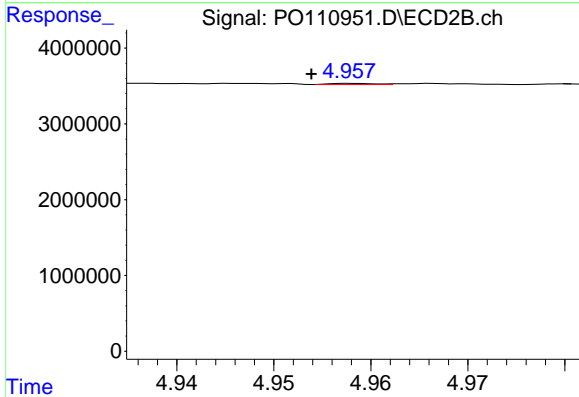
R.T.: 4.767 min
 Delta R.T.: -0.012 min
 Response: 1359114
 Conc: 11.81 ng/ml



#13 AR-1232-3

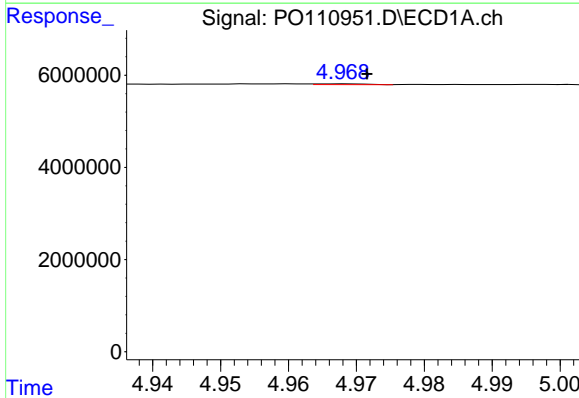
R.T.: 4.782 min
 Delta R.T.: -0.012 min
 Response: 1511813
 Conc: 9.50 ng/ml

Instrument :
 ECD_O
 ClientSampleId :
 I.BLK



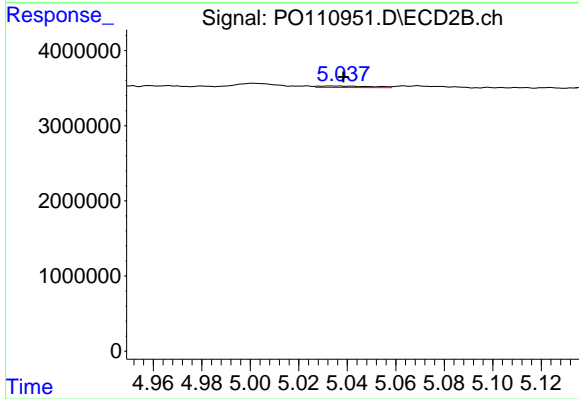
#13 AR-1232-3

R.T.: 4.958 min
 Delta R.T.: 0.005 min
 Response: 48940
 Conc: 0.81 ng/ml



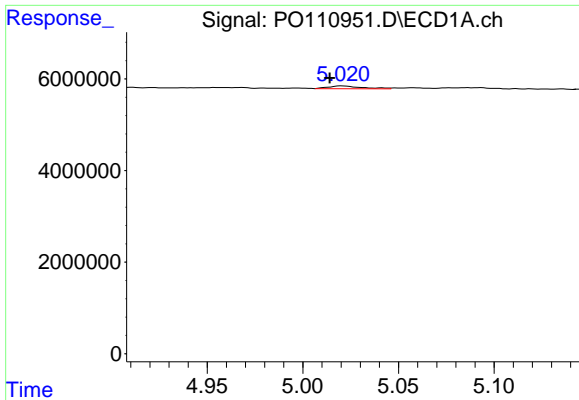
#14 AR-1232-4

R.T.: 4.968 min
 Delta R.T.: -0.004 min
 Response: 94520
 Conc: 1.12 ng/ml



#14 AR-1232-4

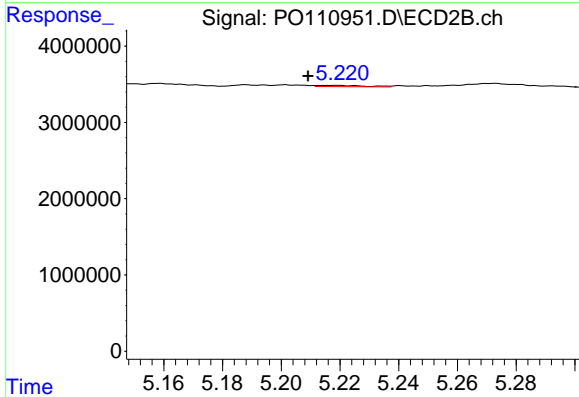
R.T.: 5.033 min
 Delta R.T.: -0.005 min
 Response: 279402
 Conc: 5.02 ng/ml



#15 AR-1232-5

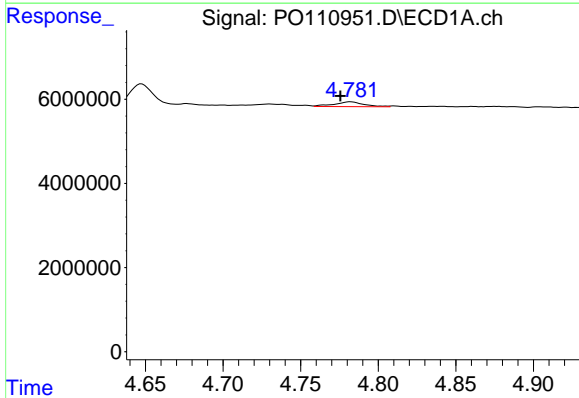
R.T.: 5.021 min
 Delta R.T.: 0.006 min
 Response: 740399
 Conc: 12.58 ng/ml

Instrument :
 ECD_O
 ClientSampleId :
 I.BLK



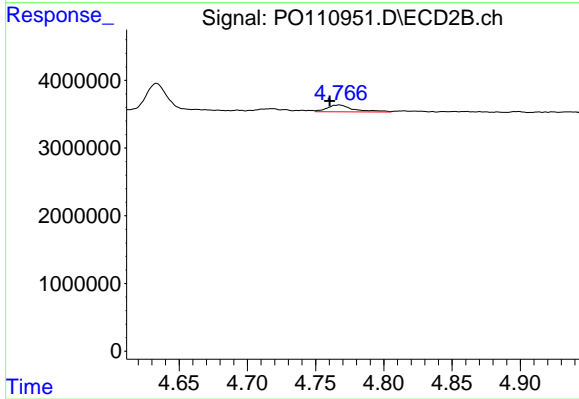
#15 AR-1232-5

R.T.: 5.219 min
 Delta R.T.: 0.010 min
 Response: 184017
 Conc: 3.13 ng/ml



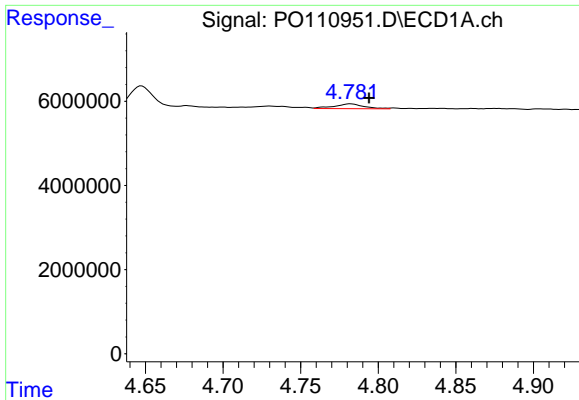
#16 AR-1242-1

R.T.: 4.782 min
 Delta R.T.: 0.007 min
 Response: 1511813
 Conc: 8.22 ng/ml



#16 AR-1242-1

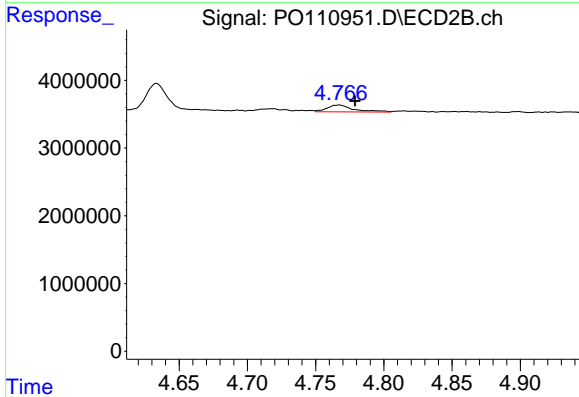
R.T.: 4.767 min
 Delta R.T.: 0.007 min
 Response: 1359114
 Conc: 10.27 ng/ml



#17 AR-1242-2

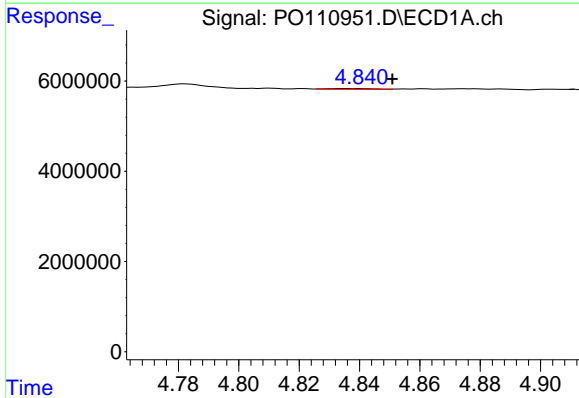
R.T.: 4.782 min
 Delta R.T.: -0.012 min
 Response: 1511813
 Conc: 5.87 ng/ml

Instrument :
 ECD_O
 ClientSampleId :
 I.BLK



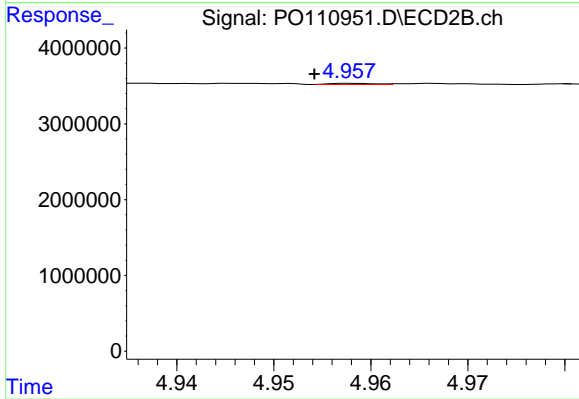
#17 AR-1242-2

R.T.: 4.767 min
 Delta R.T.: -0.012 min
 Response: 1359114
 Conc: 7.15 ng/ml



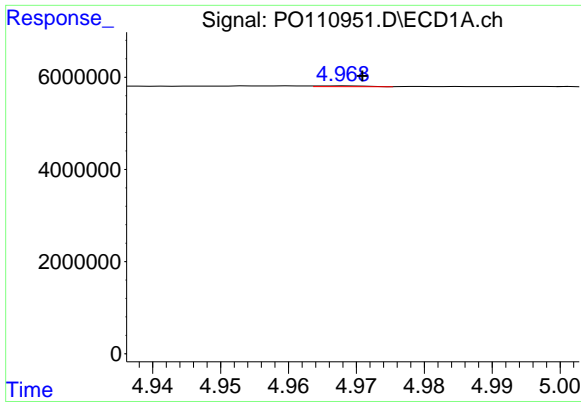
#18 AR-1242-3

R.T.: 4.841 min
 Delta R.T.: -0.010 min
 Response: 195836
 Conc: 1.08 ng/ml



#18 AR-1242-3

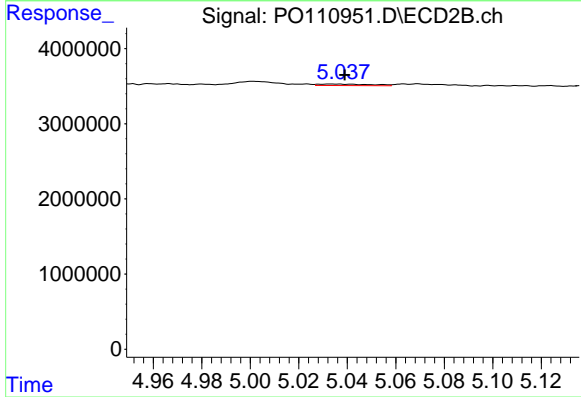
R.T.: 4.958 min
 Delta R.T.: 0.004 min
 Response: 48940
 Conc: 0.48 ng/ml



#19 AR-1242-4

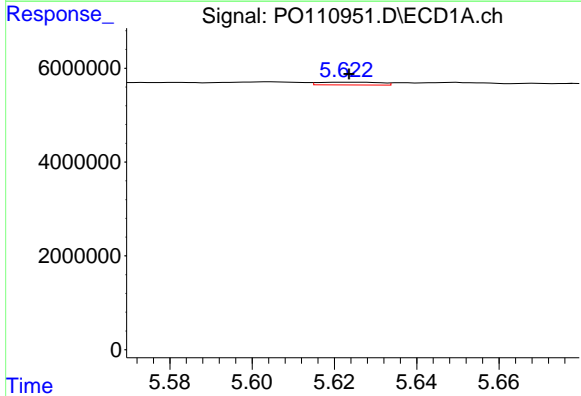
R.T.: 4.968 min
 Delta R.T.: -0.003 min
 Response: 94520
 Conc: 0.68 ng/ml

Instrument :
 ECD_O
 ClientSampleId :
 I.BLK



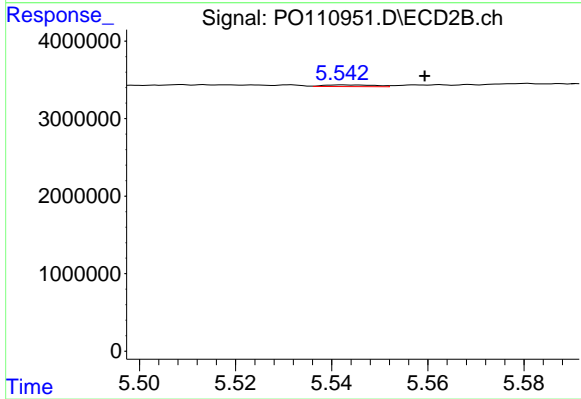
#19 AR-1242-4

R.T.: 5.033 min
 Delta R.T.: -0.006 min
 Response: 279402
 Conc: 2.69 ng/ml



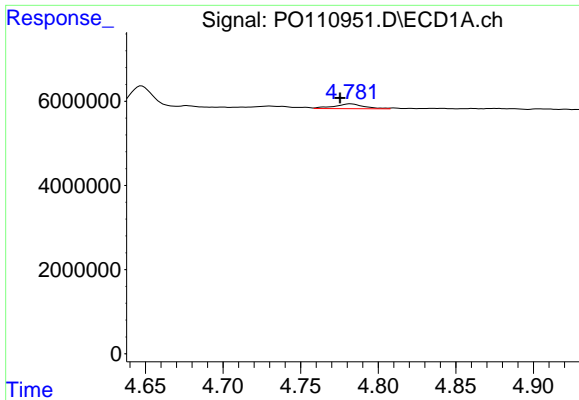
#20 AR-1242-5

R.T.: 5.623 min
 Delta R.T.: 0.000 min
 Response: 614592
 Conc: 3.94 ng/ml



#20 AR-1242-5

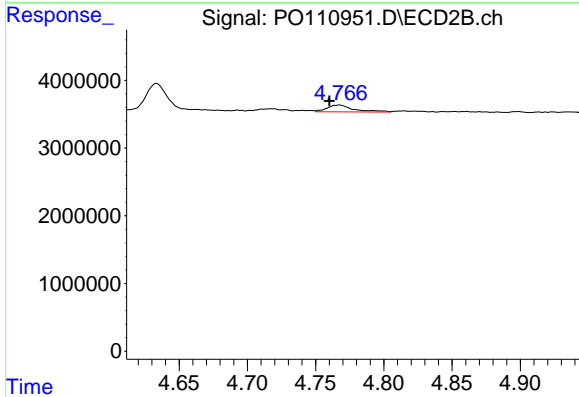
R.T.: 5.542 min
 Delta R.T.: -0.017 min
 Response: 155837
 Conc: 1.23 ng/ml



#21 AR-1248-1

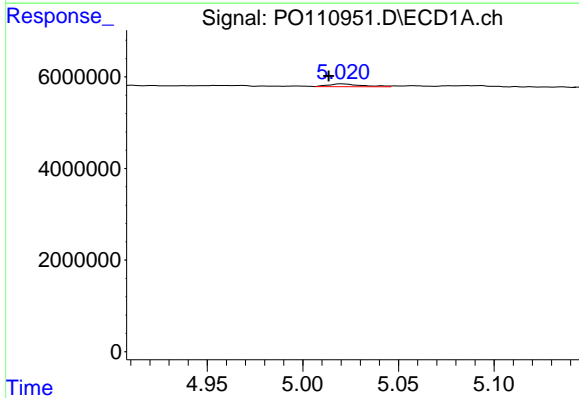
R.T.: 4.782 min
 Delta R.T.: 0.007 min
 Response: 1511813
 Conc: 11.51 ng/ml

Instrument :
 ECD_O
 ClientSampleId :
 I.BLK



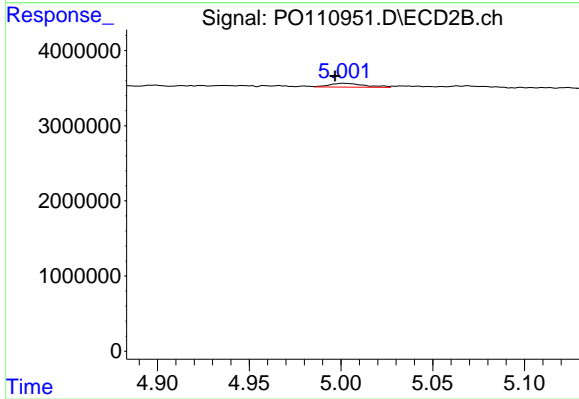
#21 AR-1248-1

R.T.: 4.767 min
 Delta R.T.: 0.007 min
 Response: 1359114
 Conc: 14.10 ng/ml



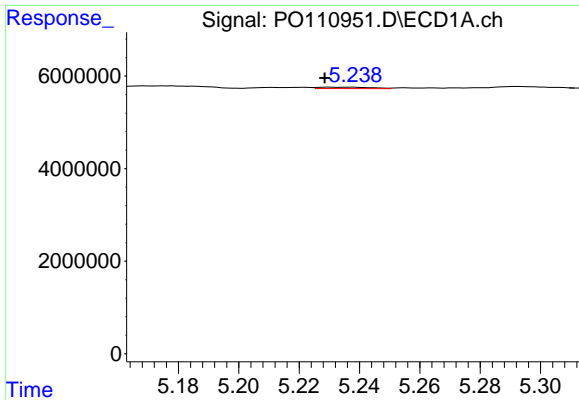
#22 AR-1248-2

R.T.: 5.021 min
 Delta R.T.: 0.007 min
 Response: 740399
 Conc: 4.23 ng/ml



#22 AR-1248-2

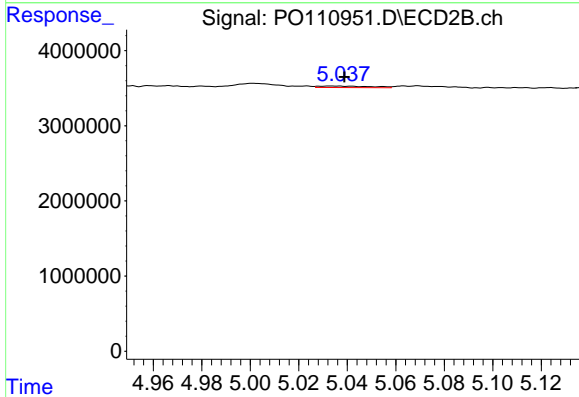
R.T.: 5.002 min
 Delta R.T.: 0.005 min
 Response: 670780
 Conc: 4.96 ng/ml



#23 AR-1248-3

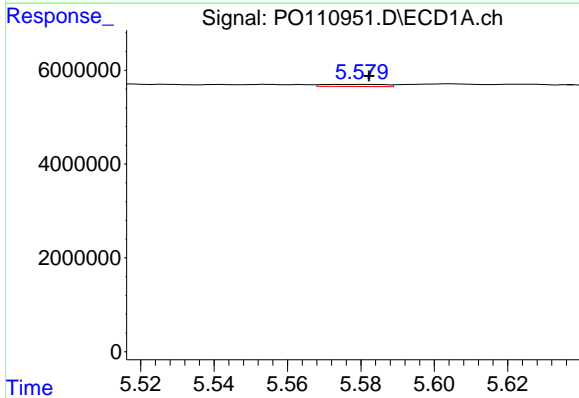
R.T.: 5.230 min
 Delta R.T.: 0.002 min
 Response: 362509
 Conc: 1.64 ng/ml

Instrument :
 ECD_O
 ClientSampleId :
 I.BLK



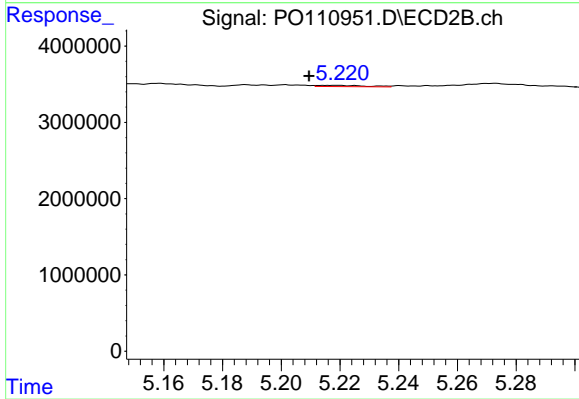
#23 AR-1248-3

R.T.: 5.033 min
 Delta R.T.: -0.005 min
 Response: 279402
 Conc: 1.93 ng/ml



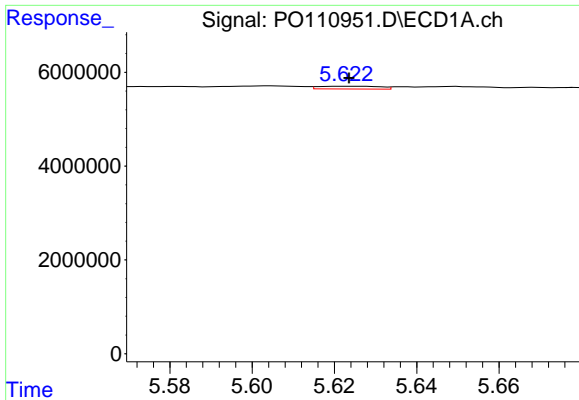
#24 AR-1248-4

R.T.: 5.581 min
 Delta R.T.: -0.001 min
 Response: 515953
 Conc: 1.57 ng/ml



#24 AR-1248-4

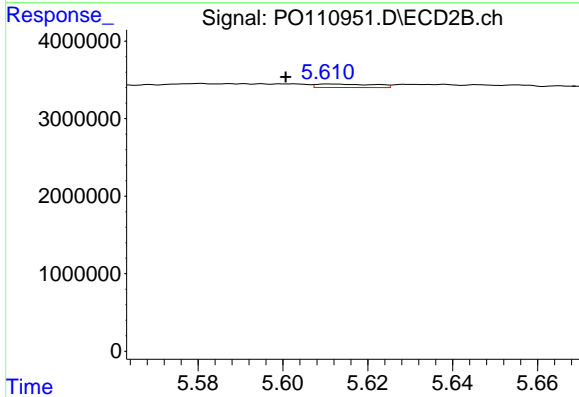
R.T.: 5.219 min
 Delta R.T.: 0.009 min
 Response: 184017
 Conc: 1.10 ng/ml



#25 AR-1248-5

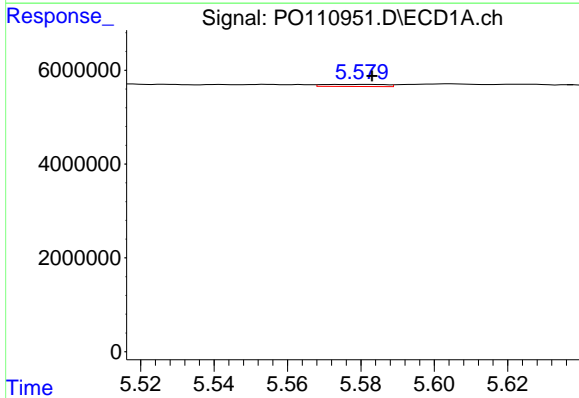
R.T.: 5.623 min
 Delta R.T.: 0.000 min
 Response: 614592
 Conc: 2.63 ng/ml

Instrument :
 ECD_O
 ClientSampleId :
 I.BLK



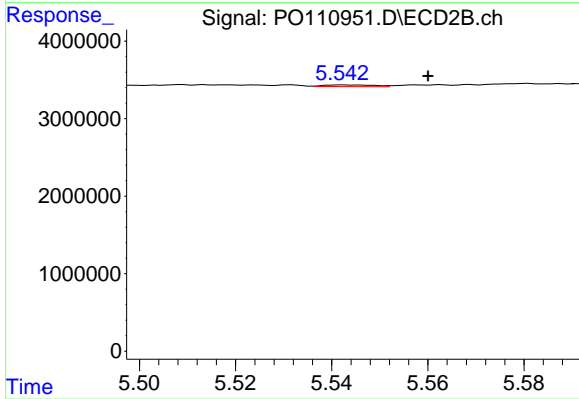
#25 AR-1248-5

R.T.: 5.611 min
 Delta R.T.: 0.011 min
 Response: 430046
 Conc: 2.56 ng/ml



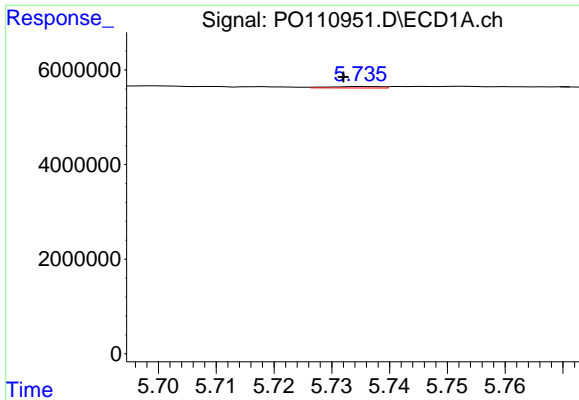
#26 AR-1254-1

R.T.: 5.581 min
 Delta R.T.: -0.002 min
 Response: 515953
 Conc: 1.53 ng/ml



#26 AR-1254-1

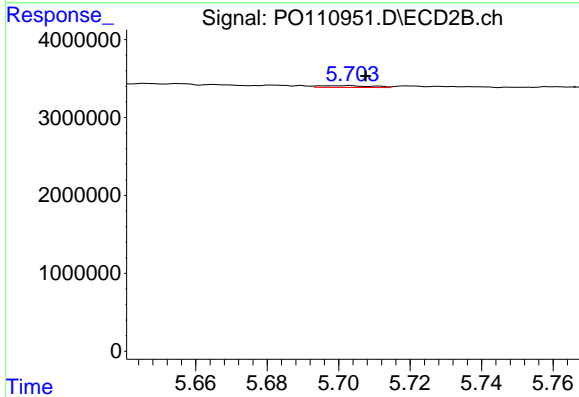
R.T.: 5.542 min
 Delta R.T.: -0.018 min
 Response: 155837
 Conc: 0.62 ng/ml



#27 AR-1254-2

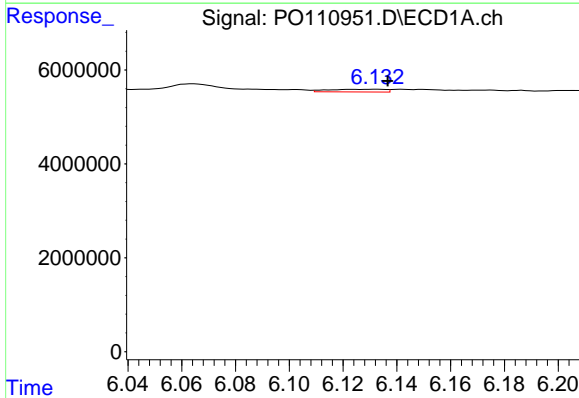
R.T.: 5.735 min
 Delta R.T.: 0.003 min
 Response: 206067
 Conc: 0.72 ng/ml

Instrument :
 ECD_O
 ClientSampleId :
 I.BLK



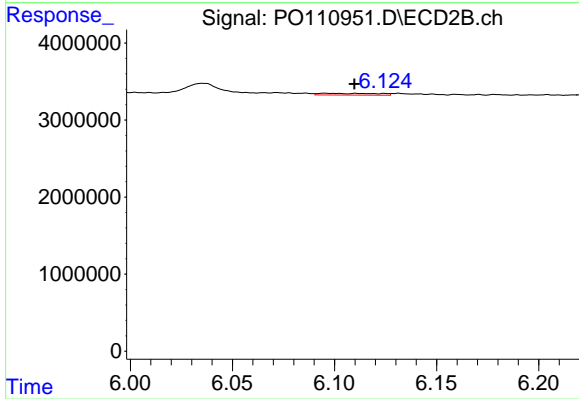
#27 AR-1254-2

R.T.: 5.703 min
 Delta R.T.: -0.005 min
 Response: 222545
 Conc: 1.02 ng/ml



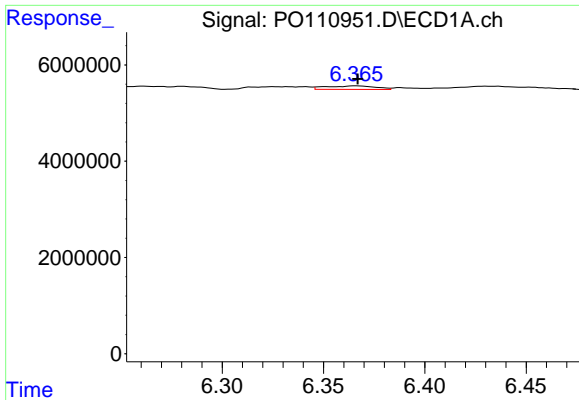
#28 AR-1254-3

R.T.: 6.132 min
 Delta R.T.: -0.004 min
 Response: 838294
 Conc: 1.83 ng/ml



#28 AR-1254-3

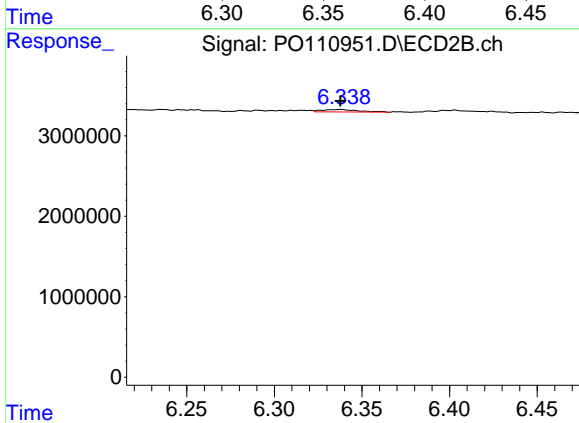
R.T.: 6.095 min
 Delta R.T.: -0.014 min
 Response: 456026
 Conc: 1.36 ng/ml



#29 AR-1254-4

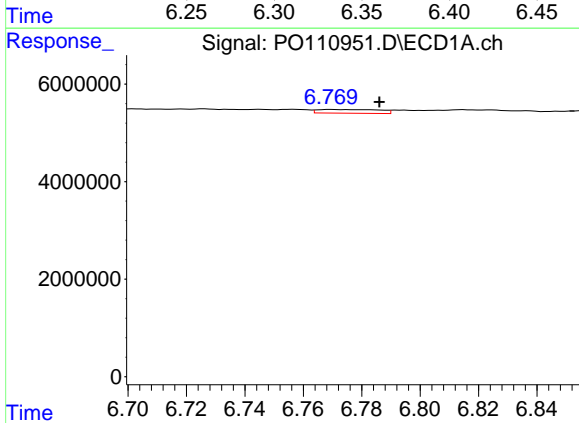
R.T.: 6.366 min
 Delta R.T.: 0.000 min
 Response: 1246369
 Conc: 4.09 ng/ml

Instrument :
 ECD_O
 ClientSampleId :
 I.BLK



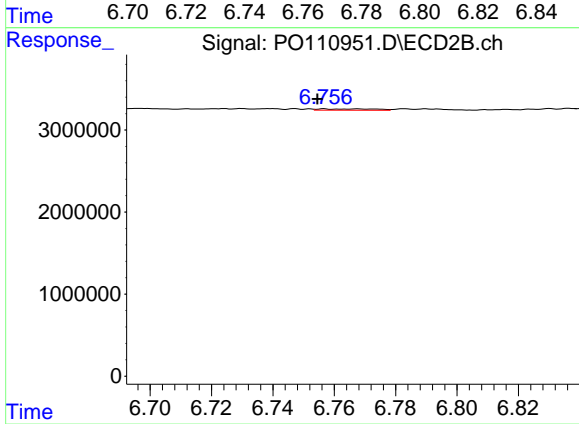
#29 AR-1254-4

R.T.: 6.338 min
 Delta R.T.: 0.000 min
 Response: 451990
 Conc: 2.33 ng/ml



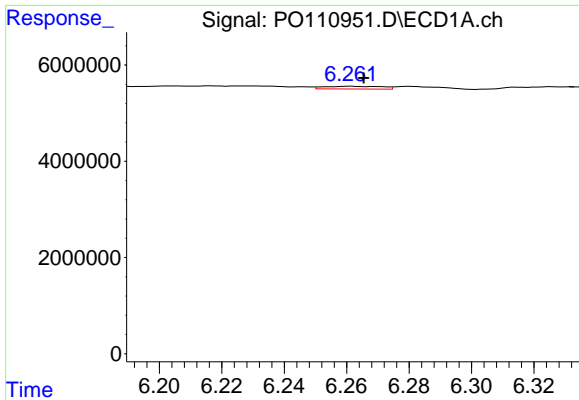
#30 AR-1254-5

R.T.: 6.770 min
 Delta R.T.: -0.016 min
 Response: 1112611
 Conc: 2.64 ng/ml



#30 AR-1254-5

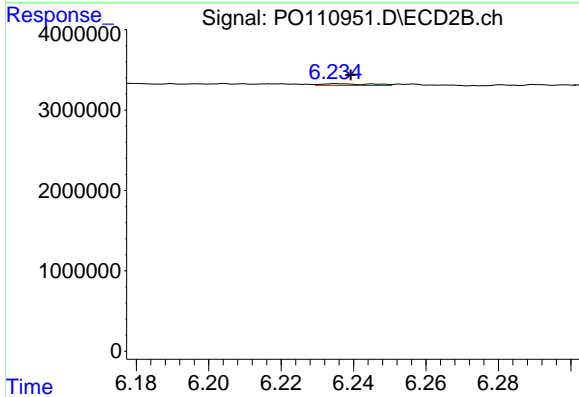
R.T.: 6.757 min
 Delta R.T.: 0.002 min
 Response: 195047
 Conc: 0.73 ng/ml



#31 AR-1260-1

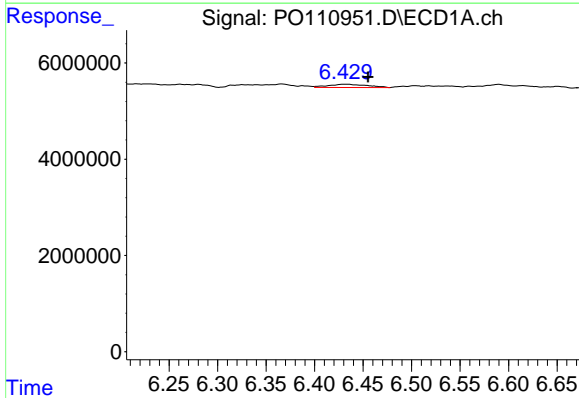
R.T.: 6.261 min
 Delta R.T.: -0.004 min
 Response: 736848
 Conc: 2.22 ng/ml

Instrument :
 ECD_O
 ClientSampleId :
 I.BLK



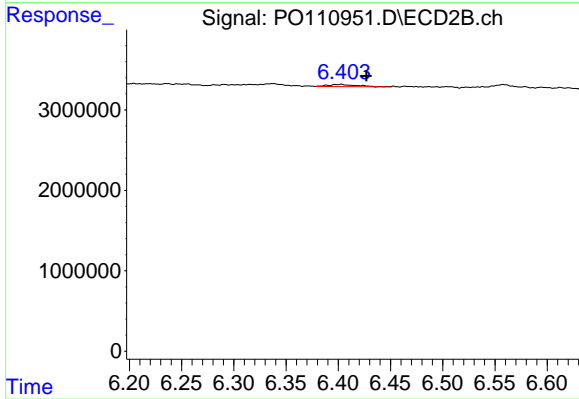
#31 AR-1260-1

R.T.: 6.236 min
 Delta R.T.: -0.004 min
 Response: 201671
 Conc: 0.91 ng/ml



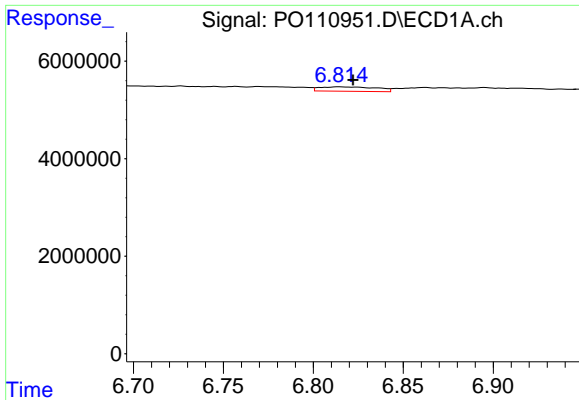
#32 AR-1260-2

R.T.: 6.430 min
 Delta R.T.: -0.025 min
 Response: 1931428
 Conc: 4.66 ng/ml



#32 AR-1260-2

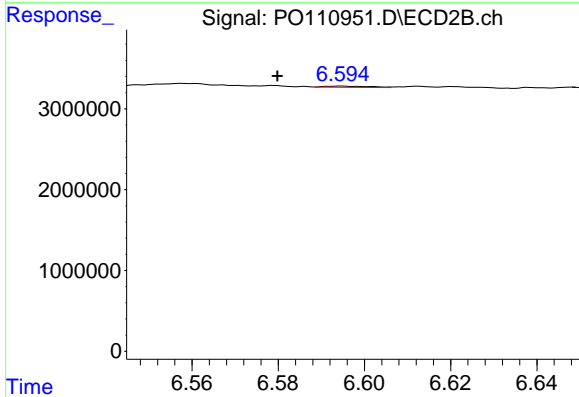
R.T.: 6.403 min
 Delta R.T.: -0.024 min
 Response: 530804
 Conc: 2.06 ng/ml



#33 AR-1260-3

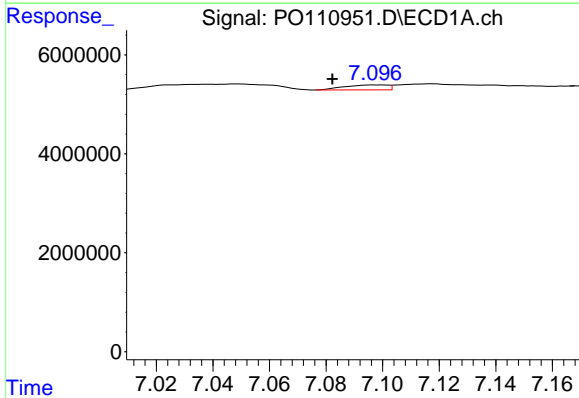
R.T.: 6.815 min
 Delta R.T.: -0.008 min
 Response: 1994238
 Conc: 5.66 ng/ml

Instrument :
 ECD_O
 ClientSampleId :
 I.BLK



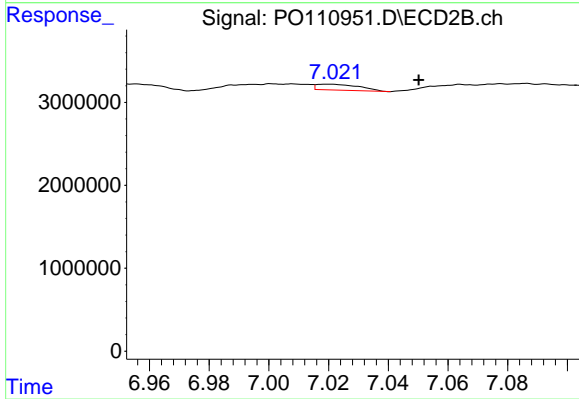
#33 AR-1260-3

R.T.: 6.595 min
 Delta R.T.: 0.015 min
 Response: 112301
 Conc: 0.48 ng/ml



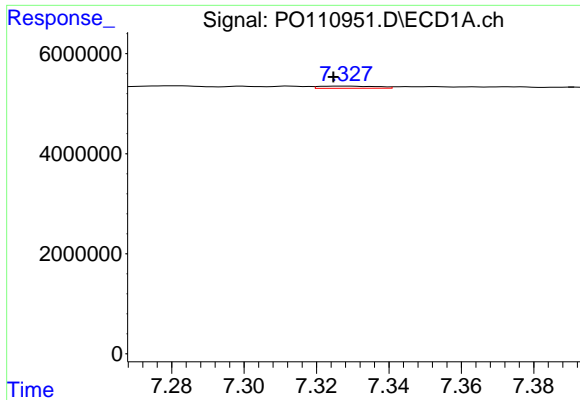
#34 AR-1260-4

R.T.: 7.098 min
 Delta R.T.: 0.016 min
 Response: 1074511
 Conc: 3.53 ng/ml



#34 AR-1260-4

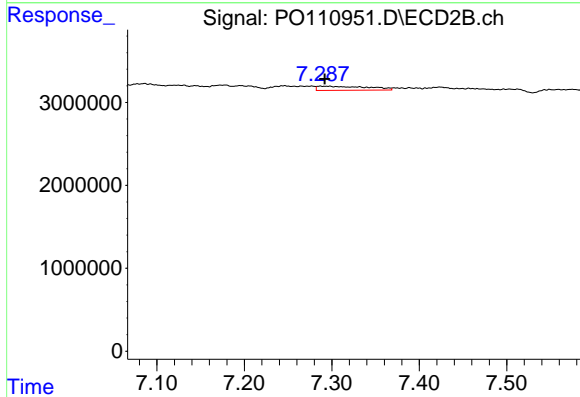
R.T.: 7.020 min
 Delta R.T.: -0.030 min
 Response: 704120
 Conc: 3.87 ng/ml



#35 AR-1260-5

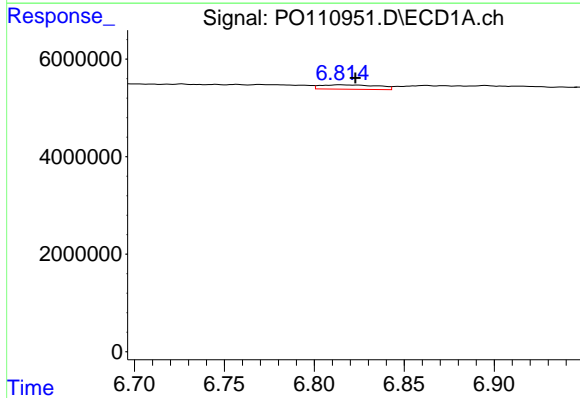
R.T.: 7.328 min
 Delta R.T.: 0.003 min
 Response: 481272
 Conc: 0.66 ng/ml

Instrument :
 ECD_O
 ClientSampleId :
 I.BLK



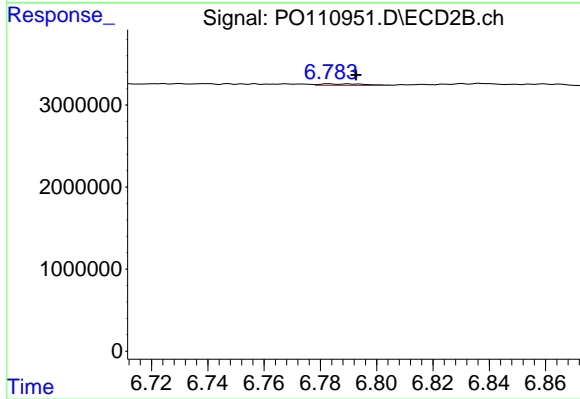
#35 AR-1260-5

R.T.: 7.298 min
 Delta R.T.: 0.006 min
 Response: 1989265
 Conc: 5.06 ng/ml



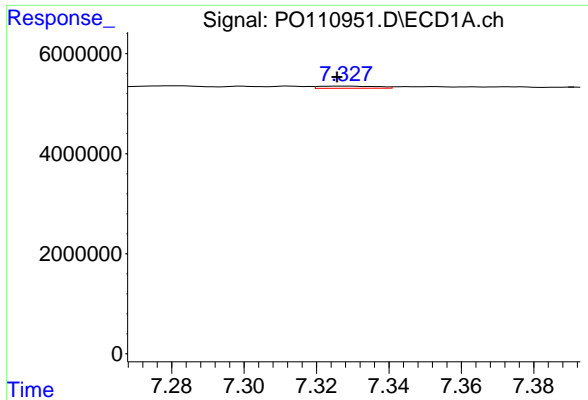
#36 AR-1262-1

R.T.: 6.815 min
 Delta R.T.: -0.008 min
 Response: 1994238
 Conc: 4.33 ng/ml



#36 AR-1262-1

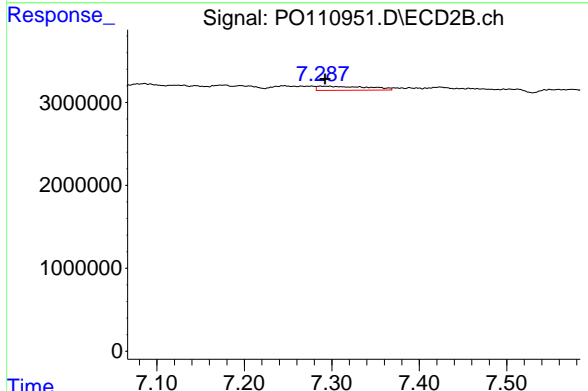
R.T.: 6.783 min
 Delta R.T.: -0.010 min
 Response: 205974
 Conc: 0.73 ng/ml



#37 AR-1262-2

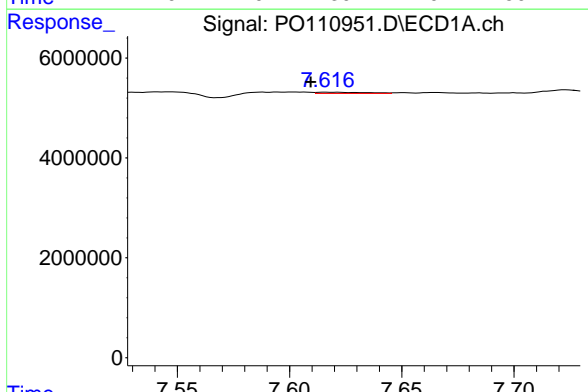
R.T.: 7.328 min
 Delta R.T.: 0.002 min
 Response: 481272
 Conc: 0.61 ng/ml

Instrument :
 ECD_O
 ClientSampleId :
 I.BLK



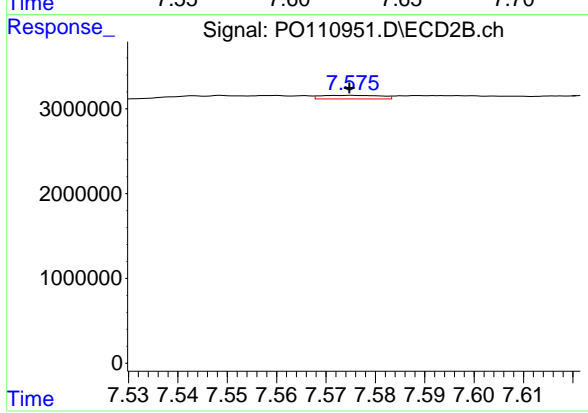
#37 AR-1262-2

R.T.: 7.298 min
 Delta R.T.: 0.006 min
 Response: 1989265
 Conc: 4.53 ng/ml



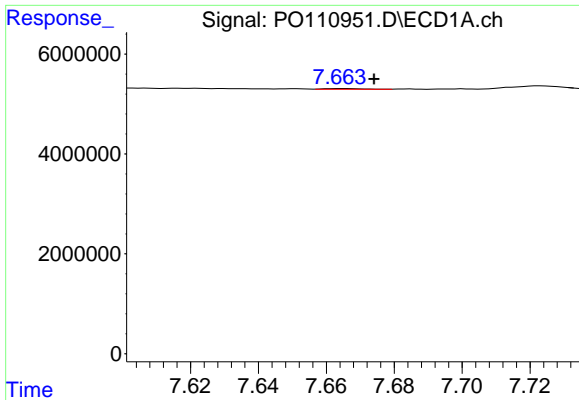
#38 AR-1262-3

R.T.: 7.616 min
 Delta R.T.: 0.006 min
 Response: 376866
 Conc: 1.13 ng/ml



#38 AR-1262-3

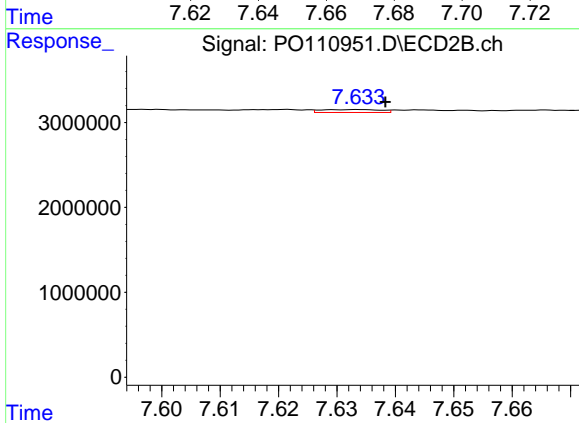
R.T.: 7.575 min
 Delta R.T.: 0.000 min
 Response: 352276
 Conc: 2.17 ng/ml



#39 AR-1262-4

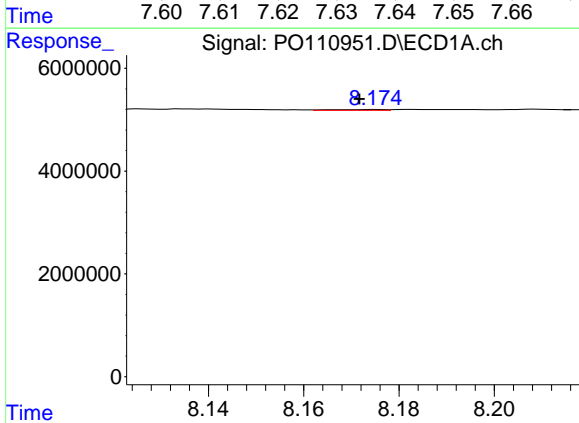
R.T.: 7.665 min
 Delta R.T.: -0.010 min
 Response: 131028
 Conc: 0.23 ng/ml

Instrument :
 ECD_O
 ClientSampleId :
 I.BLK



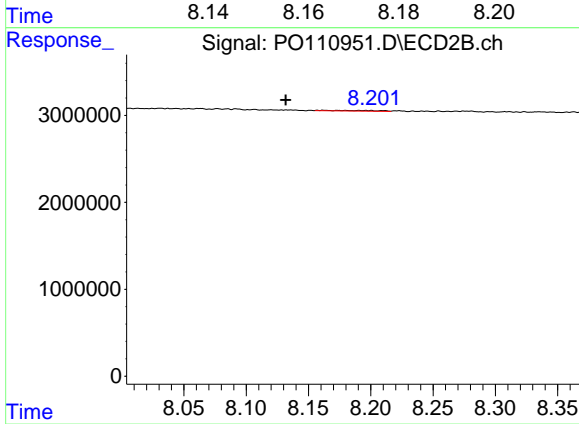
#39 AR-1262-4

R.T.: 7.633 min
 Delta R.T.: -0.005 min
 Response: 245248
 Conc: 0.84 ng/ml



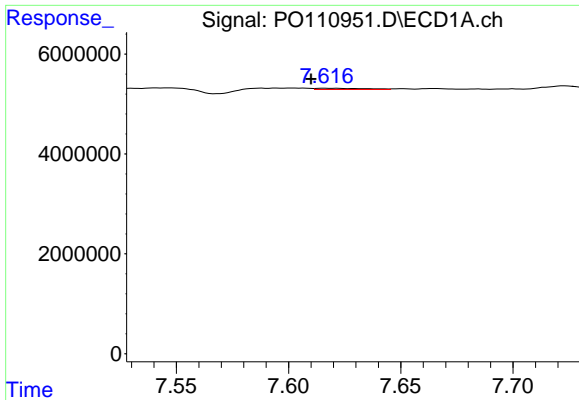
#40 AR-1262-5

R.T.: 8.175 min
 Delta R.T.: 0.003 min
 Response: 130937
 Conc: 0.49 ng/ml



#40 AR-1262-5

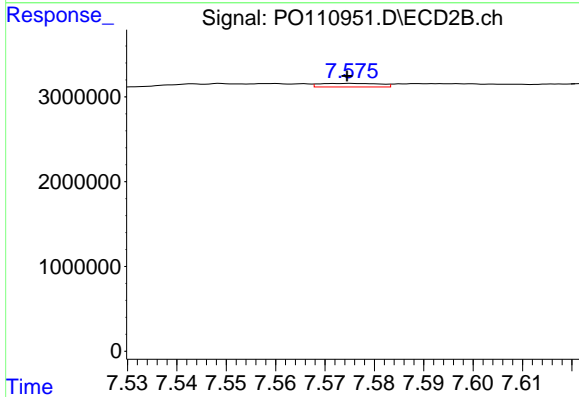
R.T.: 8.162 min
 Delta R.T.: 0.030 min
 Response: 179921
 Conc: 1.82 ng/ml



#41 AR-1268-1

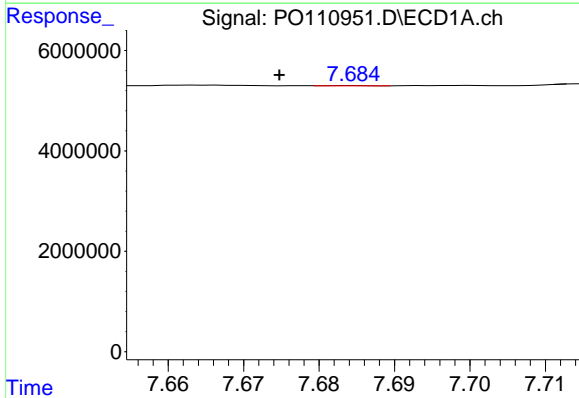
R.T.: 7.616 min
 Delta R.T.: 0.006 min
 Response: 376866
 Conc: 0.42 ng/ml

Instrument :
 ECD_O
 ClientSampleId :
 I.BLK



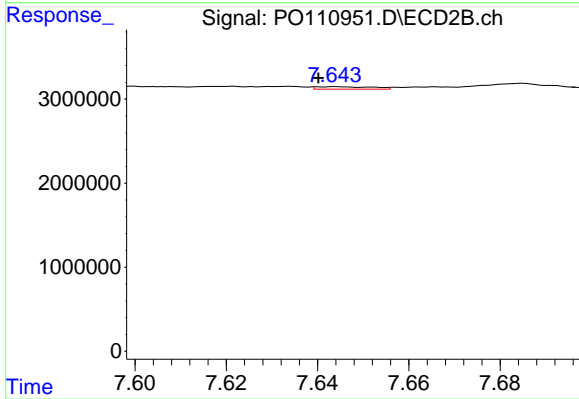
#41 AR-1268-1

R.T.: 7.575 min
 Delta R.T.: 0.000 min
 Response: 352276
 Conc: 0.82 ng/ml



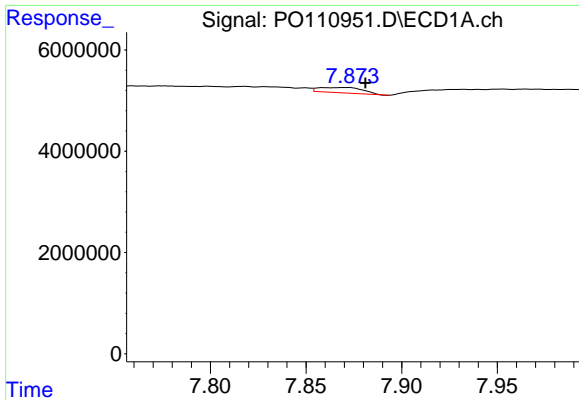
#42 AR-1268-2

R.T.: 7.685 min
 Delta R.T.: 0.010 min
 Response: 25489
 Conc: 0.03 ng/ml



#42 AR-1268-2

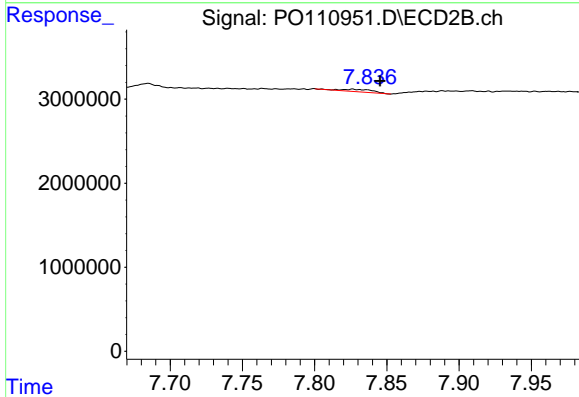
R.T.: 7.644 min
 Delta R.T.: 0.004 min
 Response: 259115
 Conc: 0.67 ng/ml



#43 AR-1268-3

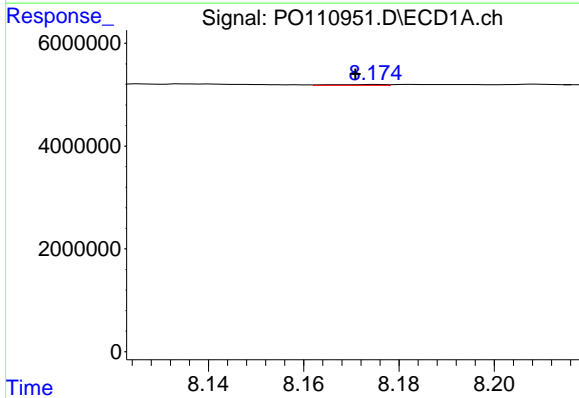
R.T.: 7.872 min
 Delta R.T.: -0.009 min
 Response: 1700289
 Conc: 2.48 ng/ml

Instrument :
 ECD_O
 ClientSampleId :
 I.BLK



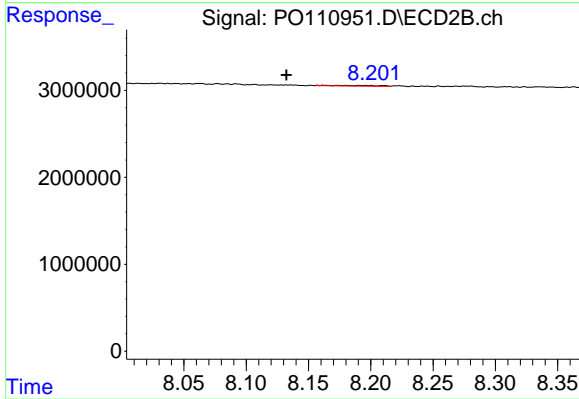
#43 AR-1268-3

R.T.: 7.827 min
 Delta R.T.: -0.019 min
 Response: 459347
 Conc: 1.62 ng/ml



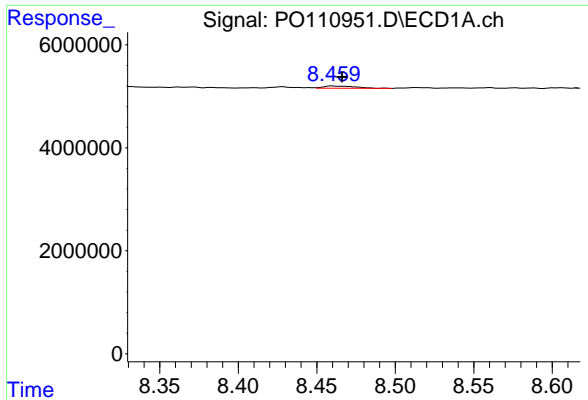
#44 AR-1268-4

R.T.: 8.175 min
 Delta R.T.: 0.004 min
 Response: 130937
 Conc: 0.47 ng/ml



#44 AR-1268-4

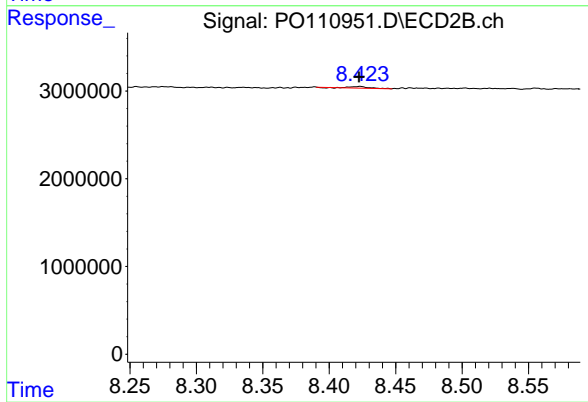
R.T.: 8.162 min
 Delta R.T.: 0.030 min
 Response: 179921
 Conc: 1.73 ng/ml



#45 AR-1268-5

R.T.: 8.460 min
 Delta R.T.: -0.006 min
 Response: 653195
 Conc: 0.32 ng/ml

Instrument :
 ECD_O
 ClientSampleId :
 I.BLK



#45 AR-1268-5

R.T.: 8.423 min
 Delta R.T.: 0.000 min
 Response: 186296
 Conc: 0.31 ng/ml