

Data Path : Z:\pestpcbsrv\HPCHEM1\ECD_0\Data\P0050825\
 Data File : PO110953.D
 Signal(s) : Signal #1: ECD1A.ch Signal #2: ECD2B.ch
 Acq On : 08 May 2025 12:20
 Operator : YP/AJ
 Sample : PB167900BS
 Misc :
 ALS Vial : 8 Sample Multiplier: 1

Instrument :
 ECD_0
 ClientSampleId :
 PB167900BS

Integration File signal 1: autoint1.e
 Integration File signal 2: autoint2.e
 Quant Time: May 08 13:12:17 2025
 Quant Method : Z:\pestpcbsrv\HPCHEM1\ECD_0\methods\P0050225.M
 Quant Title : GC EXTRACTABLES
 QLast Update : Fri May 02 23:47:49 2025
 Response via : Initial Calibration
 Integrator: ChemStation

Volume Inj. : 2 µl
 Signal #1 Phase : ZB-MR1 Signal #2 Phase: ZB-MR2
 Signal #1 Info : 30Mx0.32mmx 0.50µ Signal #2 Info : 30M x 0.32mm x 0.25µm

Compound	RT#1	RT#2	Resp#1	Resp#2	ng/ml	ng/ml
System Monitoring Compounds						
1) SA Tetrachlo...	3.682	3.680	94349755	86860263	16.492	17.935
2) SA Decachlor...	8.724	8.674	96736457	33719518	15.852	19.985 #
Target Compounds						
3) L1 AR-1016-1	4.772	4.759	84499319	72742979	382.325	457.856
4) L1 AR-1016-2	4.791	4.778	121.2E6	105.6E6	390.719	461.994
5) L1 AR-1016-3	4.847	4.953	84881745	56146924	371.145	460.462
6) L1 AR-1016-4	4.968	4.995	66533630	46215972	397.946	458.669
7) L1 AR-1016-5	5.225	5.207	66524555	58133787	373.547	442.409
8) L2 AR-1221-1	3.893	3.888	8040821	7524345	92.351	113.036
9) L2 AR-1221-2	3.980	3.975	10642811	9683969	157.179	188.655
10) L2 AR-1221-3	4.056	4.050	44913910	40458473	227.101	264.370
11) L3 AR-1232-1	4.056	4.050	44913910	40458473	292.439	344.438
12) L3 AR-1232-2	4.550	4.778	63339887	105.6E6	768.867	917.955
13) L3 AR-1232-3	4.791	4.953	121.2E6	56146924	761.795	931.338
14) L3 AR-1232-4	4.968	5.037	66533630	56716024	790.461	1018.012 #
15) L3 AR-1232-5	5.010	5.207	52032362	58133787	883.817	987.582
16) L4 AR-1242-1	4.772	4.759	84499319	72742979	459.416	549.723
17) L4 AR-1242-2	4.791	4.778	121.2E6	105.6E6	470.451	555.556
18) L4 AR-1242-3	4.847	4.953	84881745	56146924	466.102	554.149
19) L4 AR-1242-4	4.968	5.037	66533630	56716024	476.421	546.870
20) L4 AR-1242-5	5.620	5.558	9024201	46646128	57.887	368.553 #
21) L5 AR-1248-1	4.772	4.759	84499319	72742979	643.254	754.791
22) L5 AR-1248-2	5.010	4.995	52032362	46215972	296.933	342.032
23) L5 AR-1248-3	5.225	5.037	66524555	56716024	301.743	390.760 #
24) L5 AR-1248-4	5.579	5.207	54287587	58133787	165.655	347.034 #
25) L5 AR-1248-5	5.620	5.598	9024201	8063394	38.656	48.031
26) L6 AR-1254-1	5.579	5.558	54287587	46646128	160.818	185.823
27) L6 AR-1254-2	5.728	5.706	51185225	44874283	177.911	205.670
28) L6 AR-1254-3	6.150	6.123	94980704	74758549	207.700	223.688
29) L6 AR-1254-4	6.363	6.335	9599956	7716667	31.493	39.744 #
30) L6 AR-1254-5	6.782	6.752	173.2E6	129.2E6	410.468	481.427
31) L7 AR-1260-1	6.265	6.238	124.5E6	102.4E6	374.260	463.957
32) L7 AR-1260-2	6.454	6.426	148.4E6	117.7E6	357.826	457.432 #
33) L7 AR-1260-3	6.821	6.579	117.6E6	109.8E6	333.938	470.752 #
34) L7 AR-1260-4	7.081	7.049	106.3E6	73396004	349.356	403.063
35) L7 AR-1260-5	7.323	7.291	254.5E6	157.9E6	346.519	401.551
36) L8 AR-1262-1	6.821	6.791	117.6E6	84901139	255.495	300.636
37) L8 AR-1262-2	7.323	7.291	254.5E6	157.9E6	323.559	359.399
38) L8 AR-1262-3	7.608	7.572	53826974	29551435	161.121	182.009
39) L8 AR-1262-4	7.671	7.635	177.9E6	100.6E6	307.564	345.644
40) L8 AR-1262-5	8.169	8.129	59625744	23841599	223.489	241.818
41) L9 AR-1268-1	7.608	7.572	53826974	29551435	60.490	68.572

Data Path : Z:\pestpcbsrv\HPCHEM1\ECD_0\Data\P0050825\
 Data File : P0110953.D
 Signal(s) : Signal #1: ECD1A.ch Signal #2: ECD2B.ch
 Acq On : 08 May 2025 12:20
 Operator : YP/AJ
 Sample : PB167900BS
 Misc :
 ALS Vial : 8 Sample Multiplier: 1

Instrument :
 ECD_0
 ClientSampleId :
 PB167900BS

Integration File signal 1: autoint1.e
 Integration File signal 2: autoint2.e
 Quant Time: May 08 13:12:17 2025
 Quant Method : Z:\pestpcbsrv\HPCHEM1\ECD_0\methods\P0050225.M
 Quant Title : GC EXTRACTABLES
 QLast Update : Fri May 02 23:47:49 2025
 Response via : Initial Calibration
 Integrator: ChemStation

Volume Inj. : 2 µl
 Signal #1 Phase : ZB-MR1 Signal #2 Phase: ZB-MR2
 Signal #1 Info : 30Mx0.32mmx 0.50µ Signal #2 Info : 30M x 0.32mm x 0.25µm

	Compound	RT#1	RT#2	Resp#1	Resp#2	ng/ml	ng/ml
42)	L9 AR-1268-2	7.671	7.635	177.9E6	100.6E6	221.730	262.135
43)	L9 AR-1268-3	7.879	7.843	4595791	2496279	6.695	8.789 #
44)	L9 AR-1268-4	8.169	8.129	59625744	23841599	214.478	228.977
45)	L9 AR-1268-5	8.465	8.419	20056579	7299737	9.814	12.027

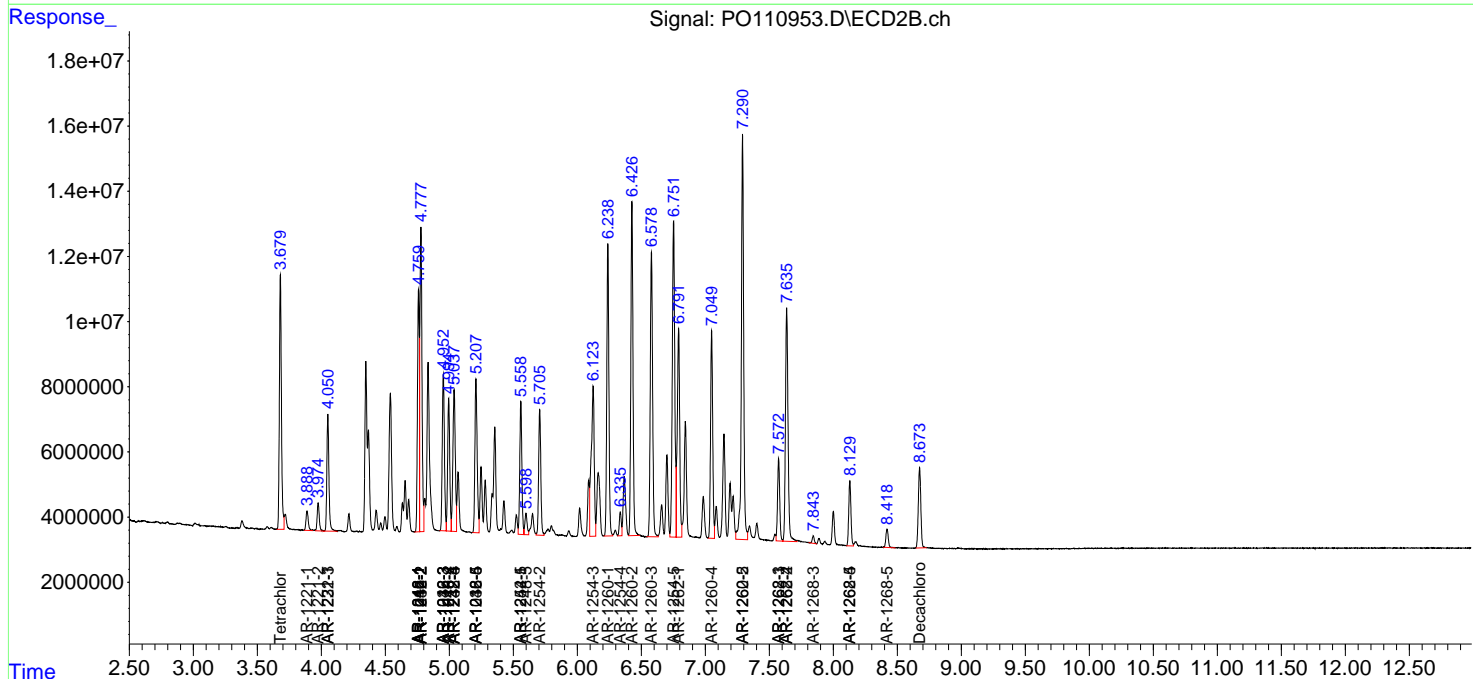
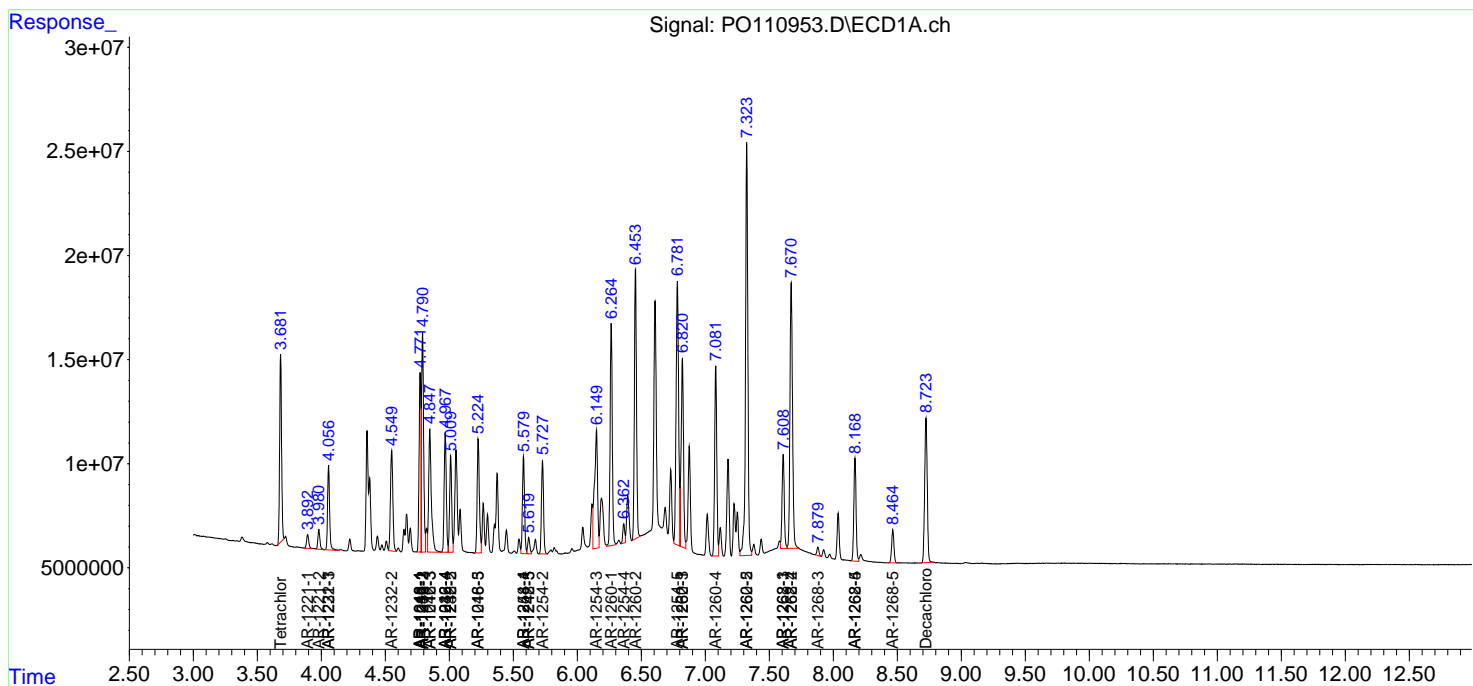
(f)=RT Delta > 1/2 Window (#)=Amounts differ by > 25% (m)=manual int.

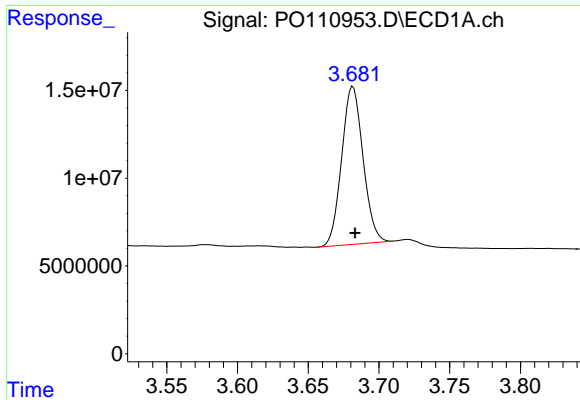
Data Path : Z:\pestpcbsrv\HPCHEM1\ECD_O\Data\PO050825\
 Data File : PO110953.D
 Signal(s) : Signal #1: ECD1A.ch Signal #2: ECD2B.ch
 Acq On : 08 May 2025 12:20
 Operator : YP/AJ
 Sample : PB167900BS
 Misc :
 ALS Vial : 8 Sample Multiplier: 1

Instrument :
 ECD_O
 ClientSampleId :
 PB167900BS

Integration File signal 1: autoint1.e
 Integration File signal 2: autoint2.e
 Quant Time: May 08 13:12:17 2025
 Quant Method : Z:\pestpcbsrv\HPCHEM1\ECD_O\methods\PO050225.M
 Quant Title : GC EXTRACTABLES
 QLast Update : Fri May 02 23:47:49 2025
 Response via : Initial Calibration
 Integrator: ChemStation

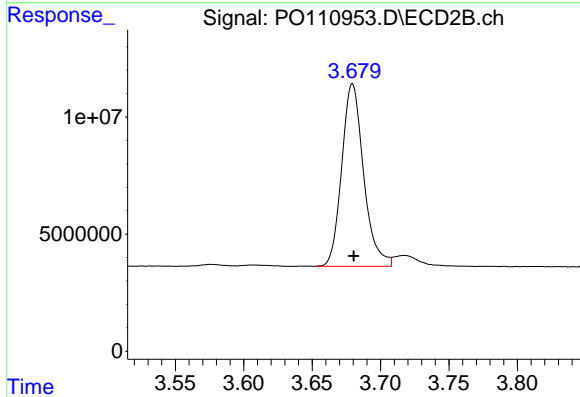
Volume Inj. : 2 µl
 Signal #1 Phase : ZB-MR1 Signal #2 Phase: ZB-MR2
 Signal #1 Info : 30Mx0.32mmx 0.50µ Signal #2 Info : 30M x 0.32mm x 0.25µm



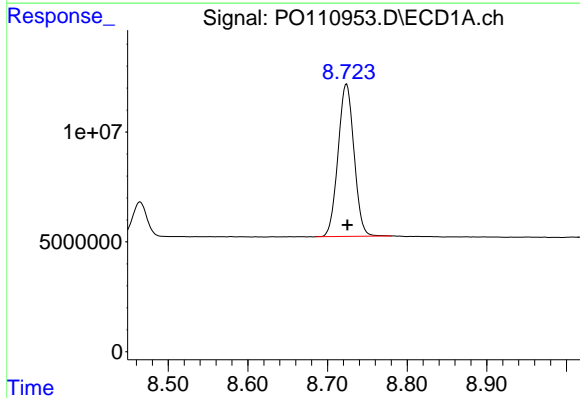


#1 Tetrachloro-m-xylene
 R.T.: 3.682 min
 Delta R.T.: -0.001 min
 Response: 94349755
 Conc: 16.49 ng/ml

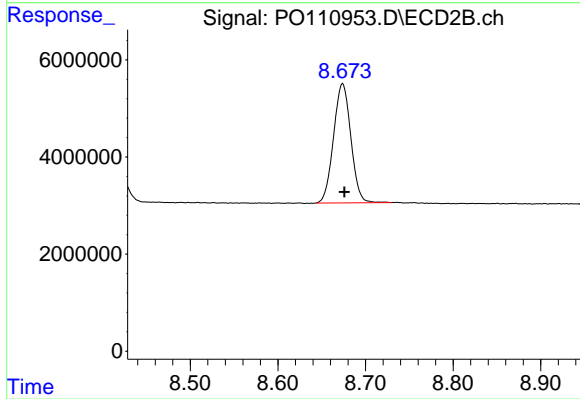
Instrument :
 ECD_O
 ClientSampleId :
 PB167900BS



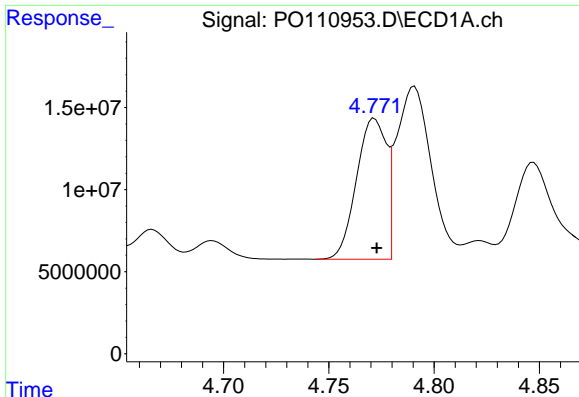
#1 Tetrachloro-m-xylene
 R.T.: 3.680 min
 Delta R.T.: 0.000 min
 Response: 86860263
 Conc: 17.93 ng/ml



#2 Decachlorobiphenyl
 R.T.: 8.724 min
 Delta R.T.: 0.000 min
 Response: 96736457
 Conc: 15.85 ng/ml



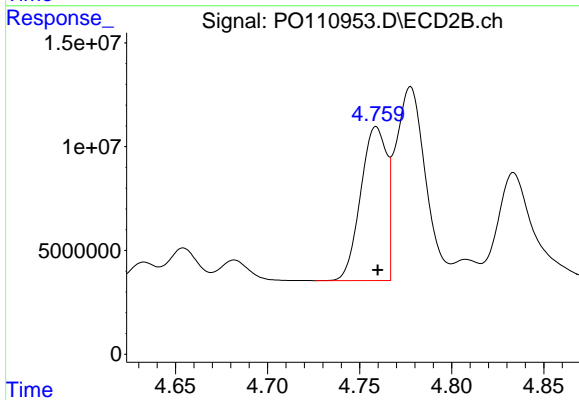
#2 Decachlorobiphenyl
 R.T.: 8.674 min
 Delta R.T.: -0.002 min
 Response: 33719518
 Conc: 19.98 ng/ml



#3 AR-1016-1

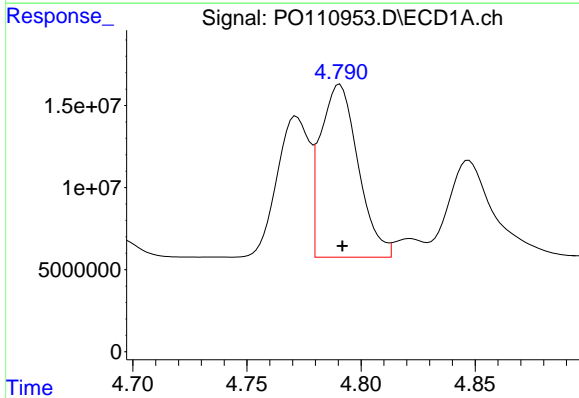
R.T.: 4.772 min
 Delta R.T.: -0.001 min
 Response: 84499319
 Conc: 382.33 ng/ml

Instrument :
 ECD_O
 ClientSampleId :
 PB167900BS



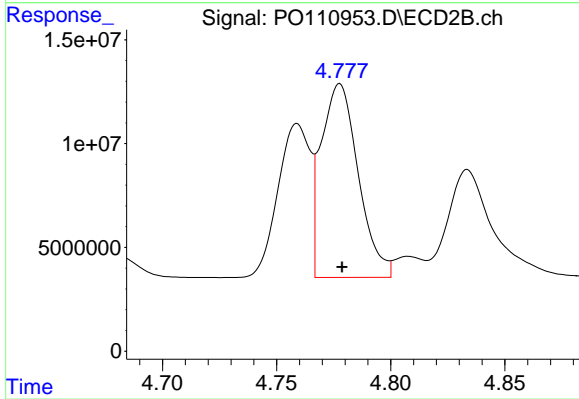
#3 AR-1016-1

R.T.: 4.759 min
 Delta R.T.: 0.000 min
 Response: 72742979
 Conc: 457.86 ng/ml



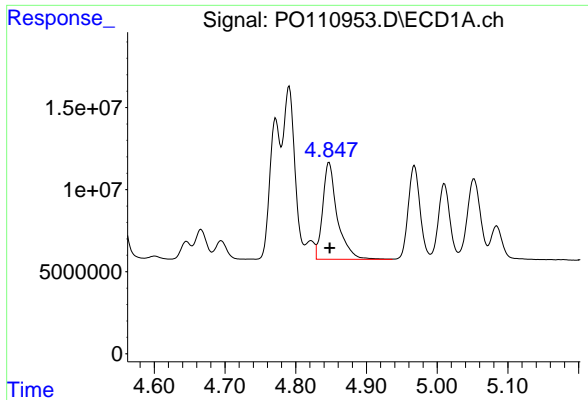
#4 AR-1016-2

R.T.: 4.791 min
 Delta R.T.: -0.001 min
 Response: 121190061
 Conc: 390.72 ng/ml



#4 AR-1016-2

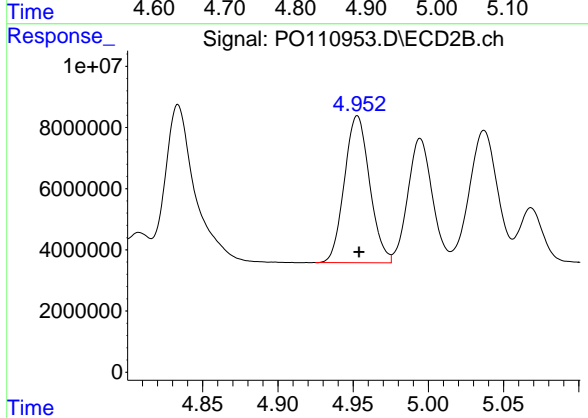
R.T.: 4.778 min
 Delta R.T.: 0.000 min
 Response: 105596907
 Conc: 461.99 ng/ml



#5 AR-1016-3

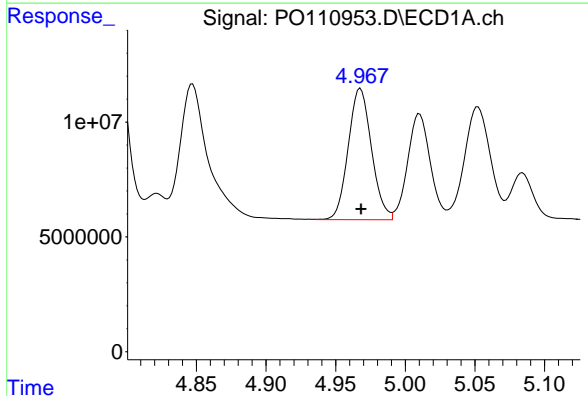
R.T.: 4.847 min
 Delta R.T.: -0.001 min
 Response: 84881745
 Conc: 371.15 ng/ml

Instrument :
 ECD_O
 ClientSampleId :
 PB167900BS



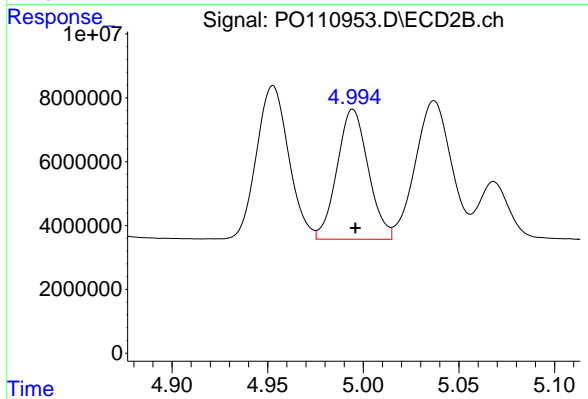
#5 AR-1016-3

R.T.: 4.953 min
 Delta R.T.: -0.001 min
 Response: 56146924
 Conc: 460.46 ng/ml



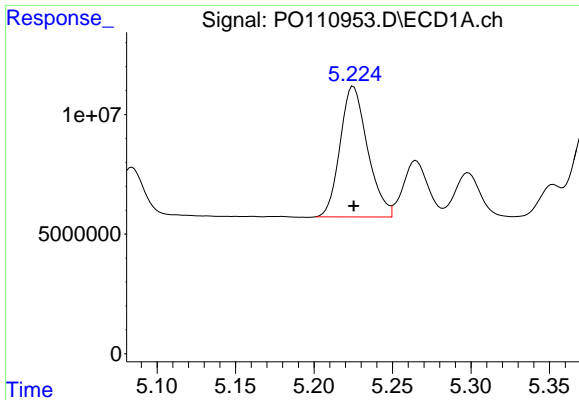
#6 AR-1016-4

R.T.: 4.968 min
 Delta R.T.: 0.000 min
 Response: 66533630
 Conc: 397.95 ng/ml



#6 AR-1016-4

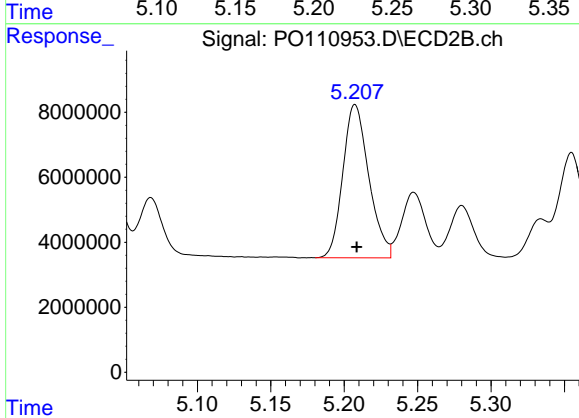
R.T.: 4.995 min
 Delta R.T.: -0.001 min
 Response: 46215972
 Conc: 458.67 ng/ml



#7 AR-1016-5

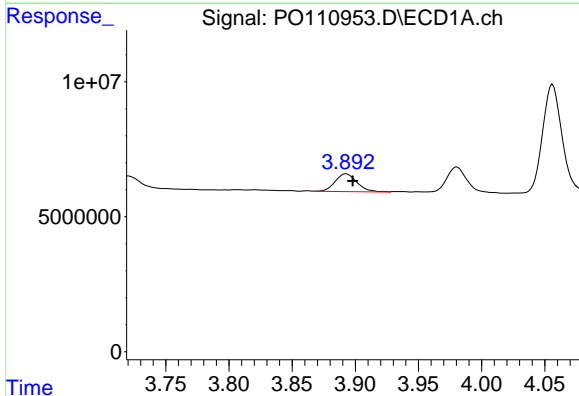
R.T.: 5.225 min
 Delta R.T.: 0.000 min
 Response: 66524555
 Conc: 373.55 ng/ml

Instrument :
 ECD_O
 ClientSampleId :
 PB167900BS



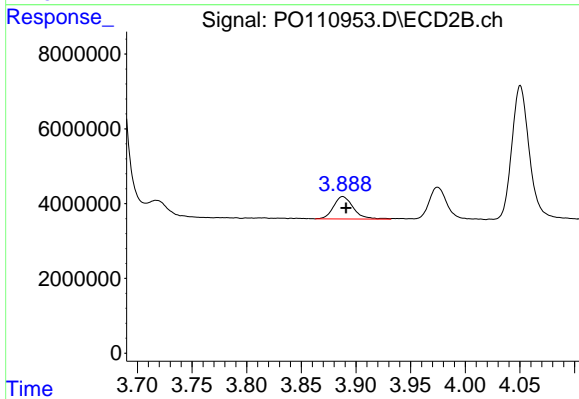
#7 AR-1016-5

R.T.: 5.207 min
 Delta R.T.: -0.001 min
 Response: 58133787
 Conc: 442.41 ng/ml



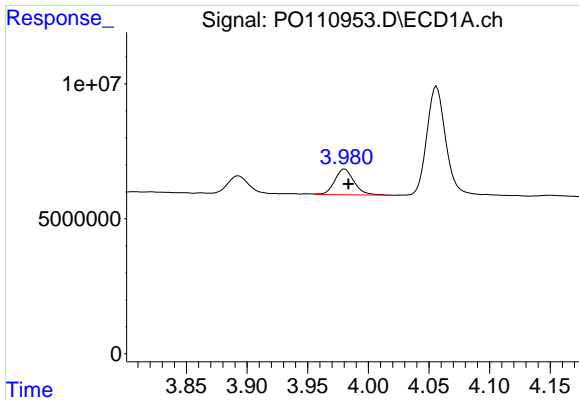
#8 AR-1221-1

R.T.: 3.893 min
 Delta R.T.: -0.005 min
 Response: 8040821
 Conc: 92.35 ng/ml



#8 AR-1221-1

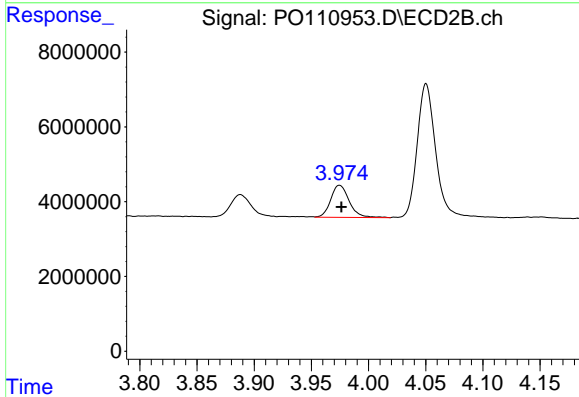
R.T.: 3.888 min
 Delta R.T.: -0.003 min
 Response: 7524345
 Conc: 113.04 ng/ml



#9 AR-1221-2

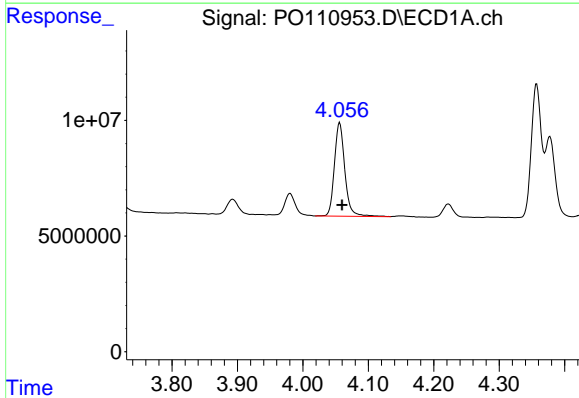
R.T.: 3.980 min
 Delta R.T.: -0.003 min
 Response: 10642811
 Conc: 157.18 ng/ml

Instrument :
 ECD_O
 ClientSampleId :
 PB167900BS



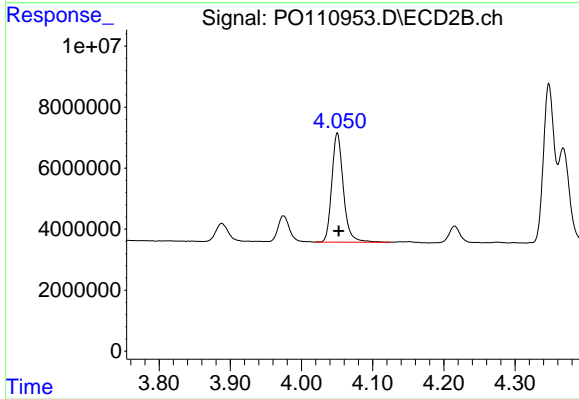
#9 AR-1221-2

R.T.: 3.975 min
 Delta R.T.: -0.002 min
 Response: 9683969
 Conc: 188.66 ng/ml



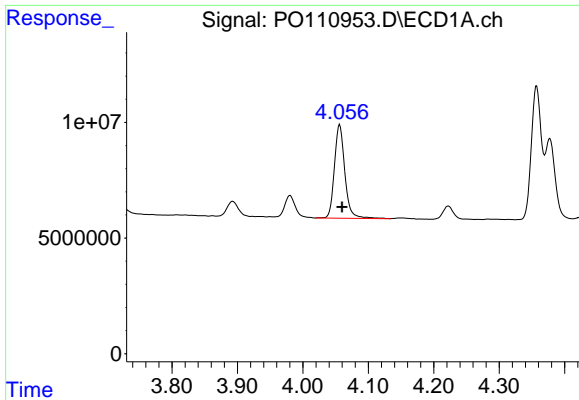
#10 AR-1221-3

R.T.: 4.056 min
 Delta R.T.: -0.004 min
 Response: 44913910
 Conc: 227.10 ng/ml



#10 AR-1221-3

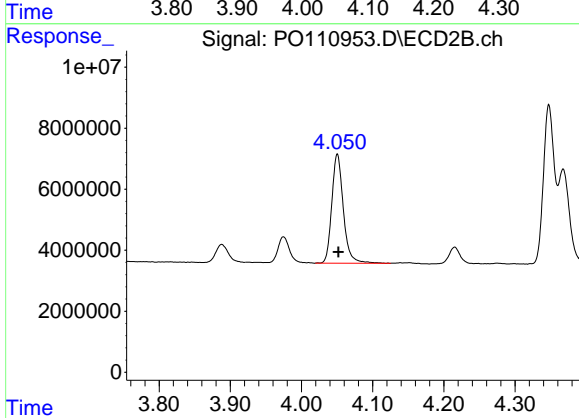
R.T.: 4.050 min
 Delta R.T.: -0.002 min
 Response: 40458473
 Conc: 264.37 ng/ml



#11 AR-1232-1

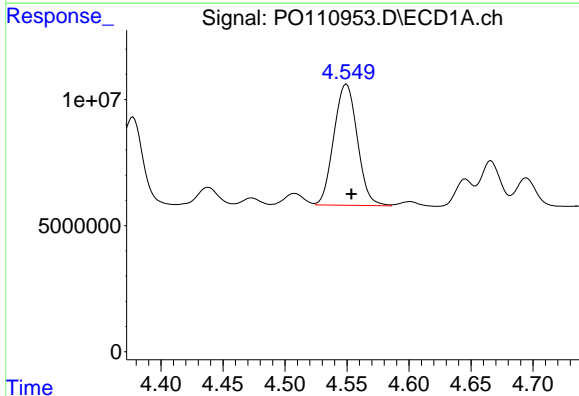
R.T.: 4.056 min
 Delta R.T.: -0.004 min
 Response: 44913910
 Conc: 292.44 ng/ml

Instrument :
 ECD_O
 ClientSampleId :
 PB167900BS



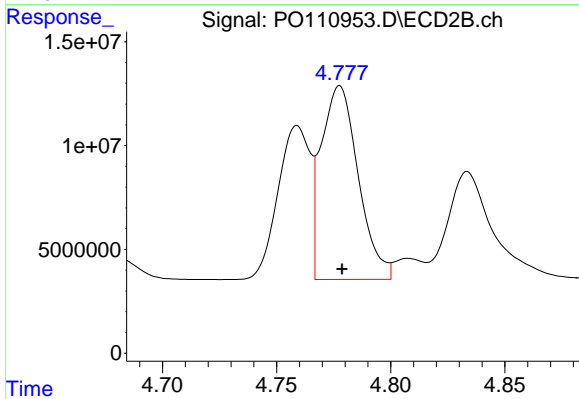
#11 AR-1232-1

R.T.: 4.050 min
 Delta R.T.: -0.001 min
 Response: 40458473
 Conc: 344.44 ng/ml



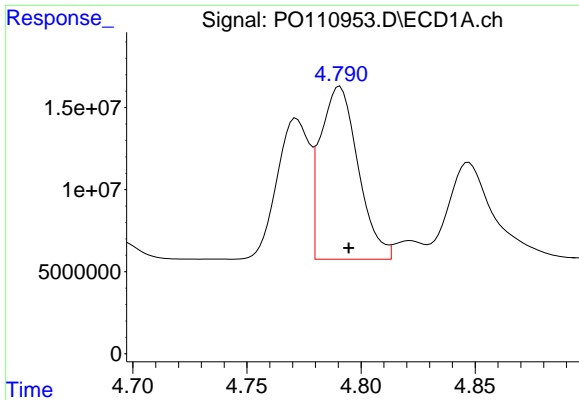
#12 AR-1232-2

R.T.: 4.550 min
 Delta R.T.: -0.004 min
 Response: 63339887
 Conc: 768.87 ng/ml



#12 AR-1232-2

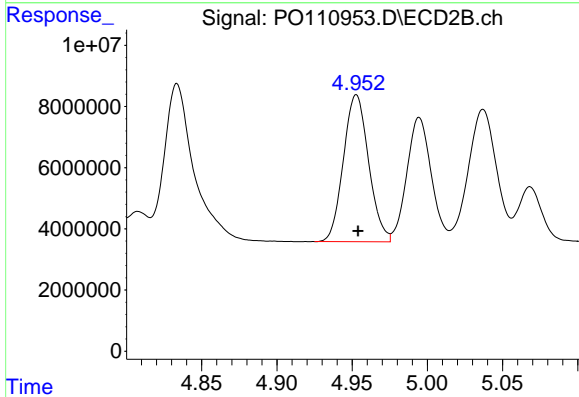
R.T.: 4.778 min
 Delta R.T.: -0.001 min
 Response: 105596907
 Conc: 917.95 ng/ml



#13 AR-1232-3

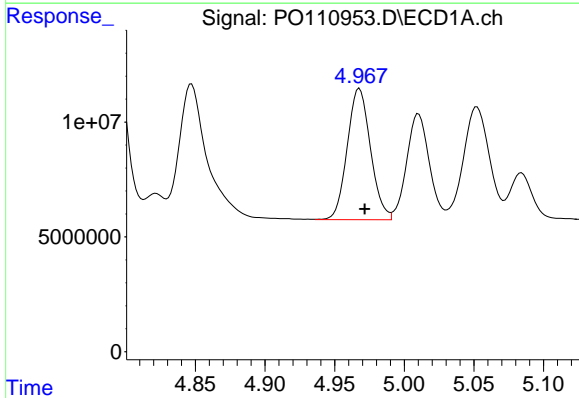
R.T.: 4.791 min
 Delta R.T.: -0.004 min
 Response: 121190061
 Conc: 761.79 ng/ml

Instrument :
 ECD_O
 ClientSampleId :
 PB167900BS



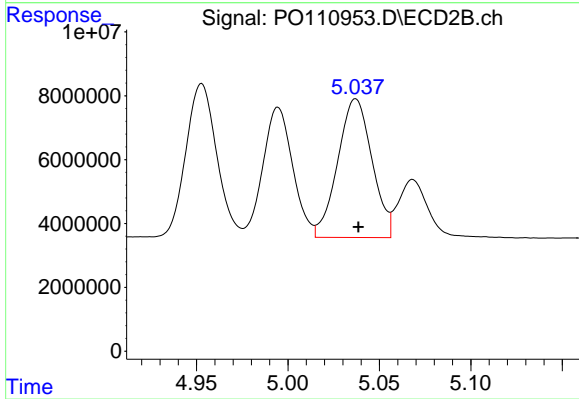
#13 AR-1232-3

R.T.: 4.953 min
 Delta R.T.: -0.001 min
 Response: 56146924
 Conc: 931.34 ng/ml



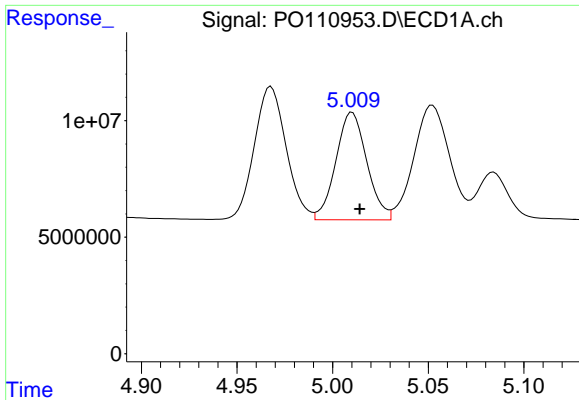
#14 AR-1232-4

R.T.: 4.968 min
 Delta R.T.: -0.004 min
 Response: 66533630
 Conc: 790.46 ng/ml



#14 AR-1232-4

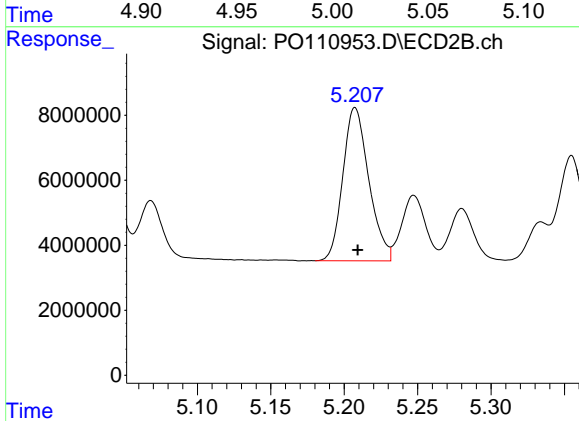
R.T.: 5.037 min
 Delta R.T.: -0.001 min
 Response: 56716024
 Conc: 1018.01 ng/ml



#15 AR-1232-5

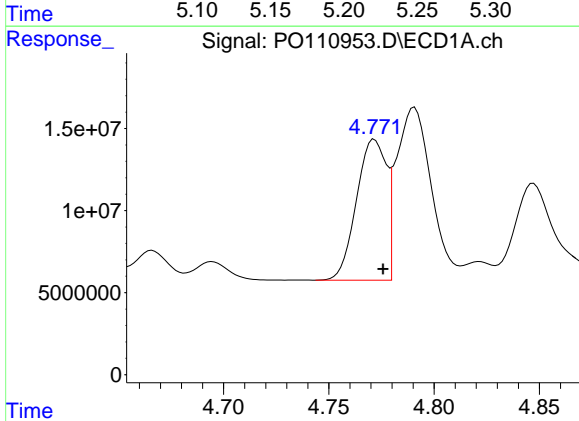
R.T.: 5.010 min
 Delta R.T.: -0.004 min
 Response: 52032362
 Conc: 883.82 ng/ml

Instrument :
 ECD_O
 ClientSampleId :
 PB167900BS



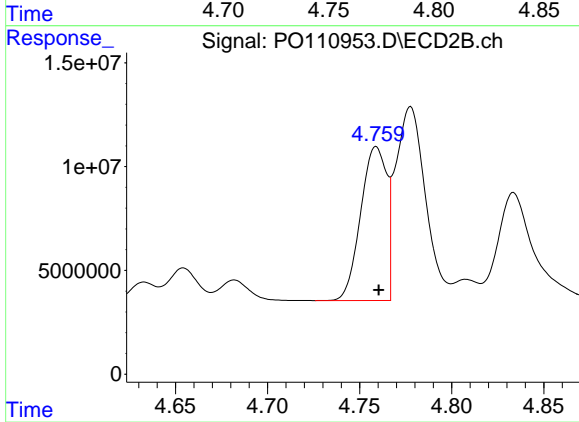
#15 AR-1232-5

R.T.: 5.207 min
 Delta R.T.: -0.002 min
 Response: 58133787
 Conc: 987.58 ng/ml



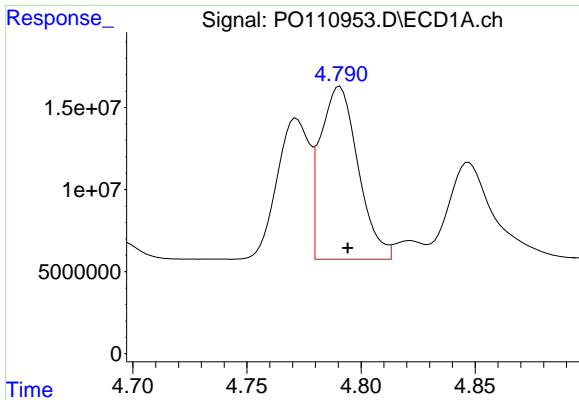
#16 AR-1242-1

R.T.: 4.772 min
 Delta R.T.: -0.004 min
 Response: 84499319
 Conc: 459.42 ng/ml



#16 AR-1242-1

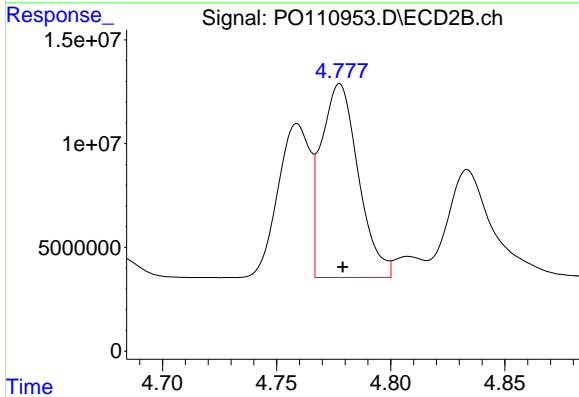
R.T.: 4.759 min
 Delta R.T.: -0.001 min
 Response: 72742979
 Conc: 549.72 ng/ml



#17 AR-1242-2

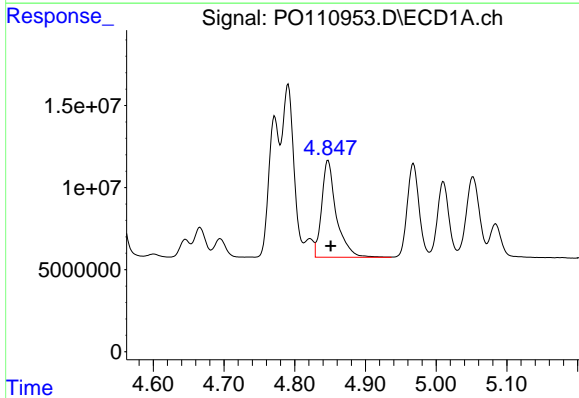
R.T.: 4.791 min
 Delta R.T.: -0.003 min
 Response: 121190061
 Conc: 470.45 ng/ml

Instrument :
 ECD_O
 ClientSampleId :
 PB167900BS



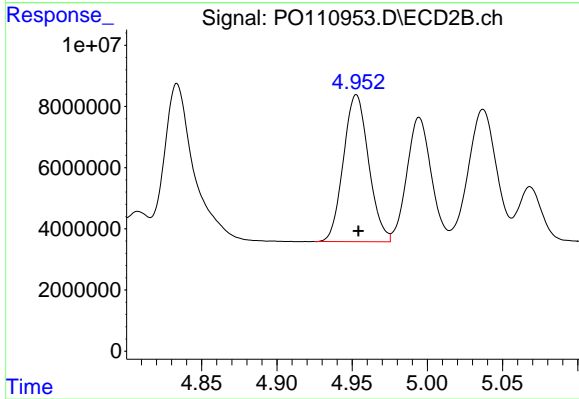
#17 AR-1242-2

R.T.: 4.778 min
 Delta R.T.: -0.001 min
 Response: 105596907
 Conc: 555.56 ng/ml



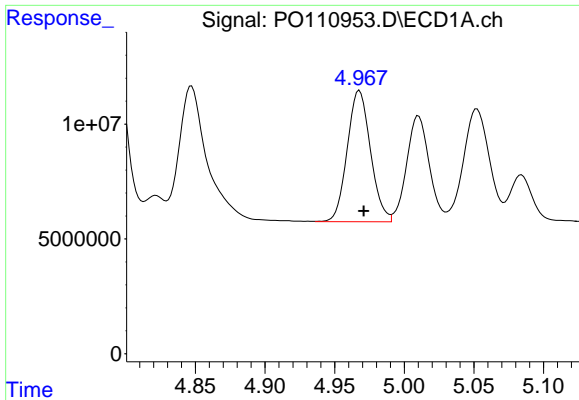
#18 AR-1242-3

R.T.: 4.847 min
 Delta R.T.: -0.004 min
 Response: 84881745
 Conc: 466.10 ng/ml



#18 AR-1242-3

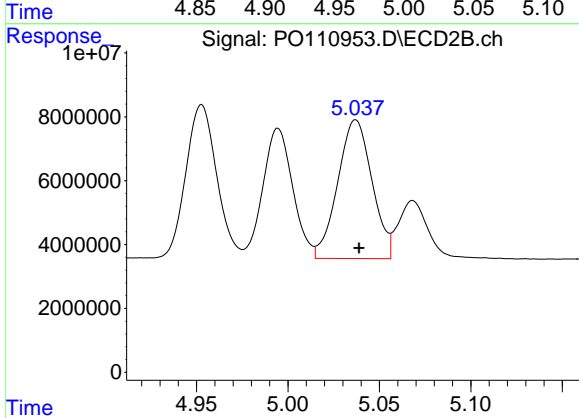
R.T.: 4.953 min
 Delta R.T.: -0.001 min
 Response: 56146924
 Conc: 554.15 ng/ml



#19 AR-1242-4

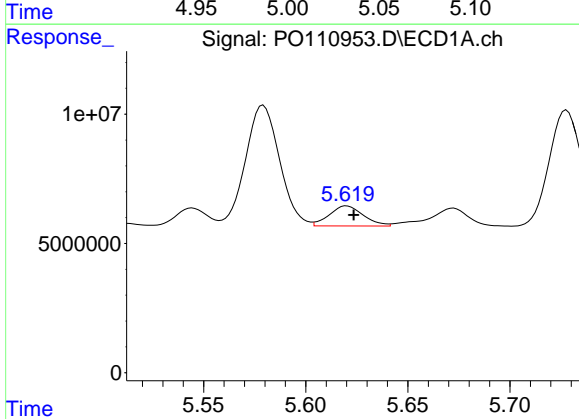
R.T.: 4.968 min
 Delta R.T.: -0.003 min
 Response: 66533630
 Conc: 476.42 ng/ml

Instrument :
 ECD_O
 ClientSampleId :
 PB167900BS



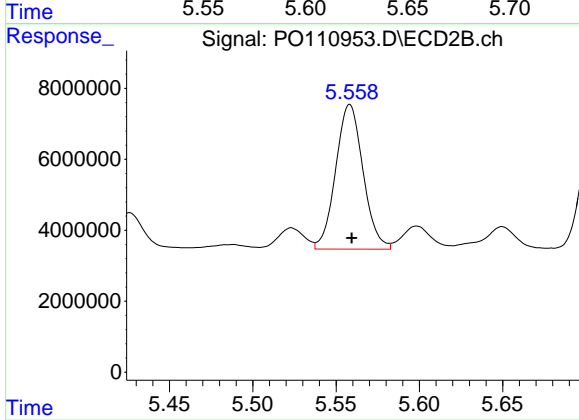
#19 AR-1242-4

R.T.: 5.037 min
 Delta R.T.: -0.002 min
 Response: 56716024
 Conc: 546.87 ng/ml



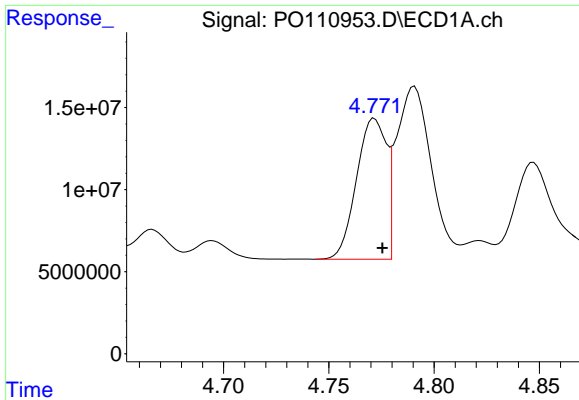
#20 AR-1242-5

R.T.: 5.620 min
 Delta R.T.: -0.003 min
 Response: 9024201
 Conc: 57.89 ng/ml



#20 AR-1242-5

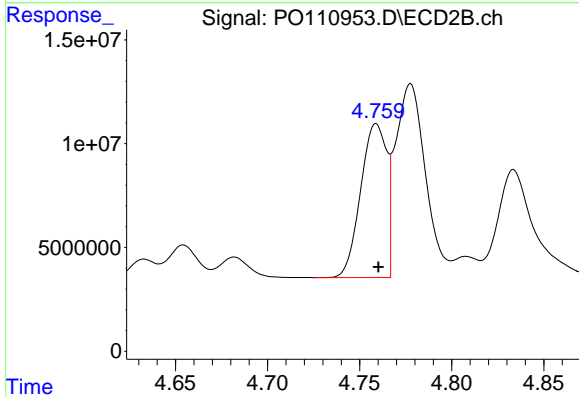
R.T.: 5.558 min
 Delta R.T.: -0.001 min
 Response: 46646128
 Conc: 368.55 ng/ml



#21 AR-1248-1

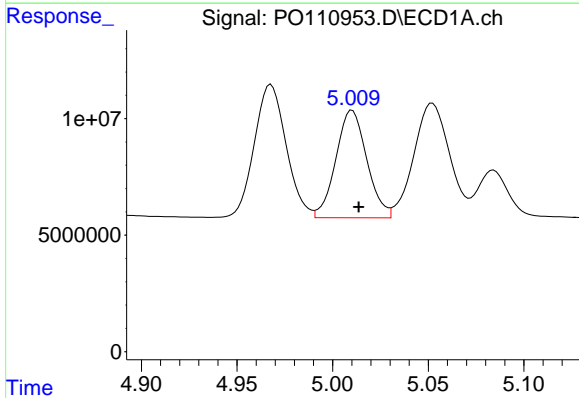
R.T.: 4.772 min
 Delta R.T.: -0.004 min
 Response: 84499319
 Conc: 643.25 ng/ml

Instrument :
 ECD_O
 ClientSampleId :
 PB167900BS



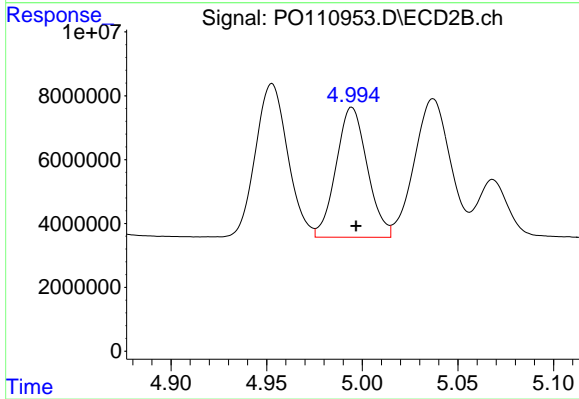
#21 AR-1248-1

R.T.: 4.759 min
 Delta R.T.: -0.001 min
 Response: 72742979
 Conc: 754.79 ng/ml



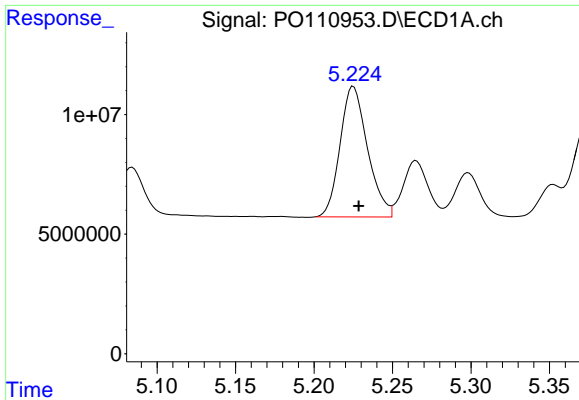
#22 AR-1248-2

R.T.: 5.010 min
 Delta R.T.: -0.003 min
 Response: 52032362
 Conc: 296.93 ng/ml



#22 AR-1248-2

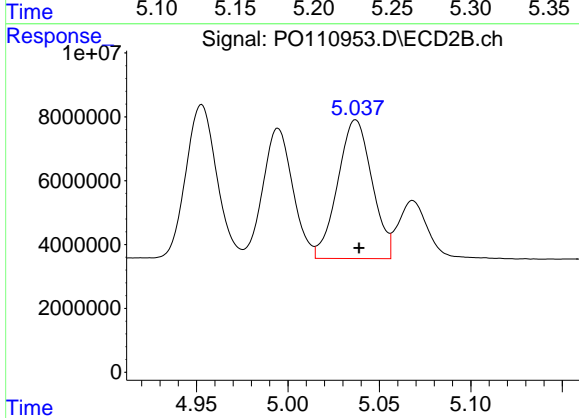
R.T.: 4.995 min
 Delta R.T.: -0.002 min
 Response: 46215972
 Conc: 342.03 ng/ml



#23 AR-1248-3

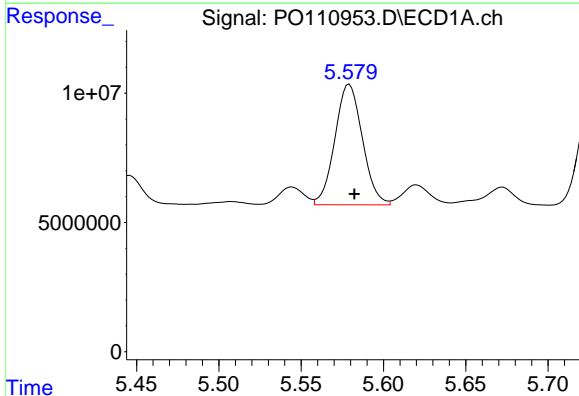
R.T.: 5.225 min
 Delta R.T.: -0.003 min
 Response: 66524555
 Conc: 301.74 ng/ml

Instrument :
 ECD_O
 ClientSampleId :
 PB167900BS



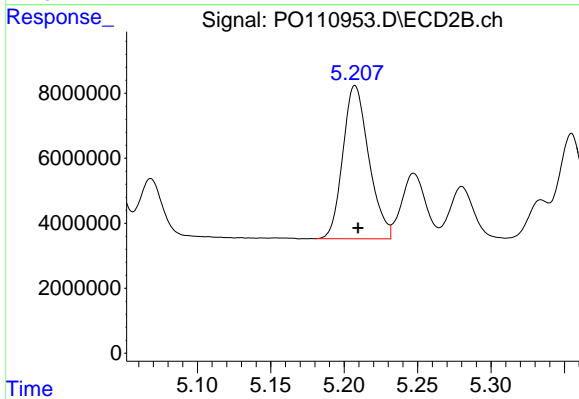
#23 AR-1248-3

R.T.: 5.037 min
 Delta R.T.: -0.002 min
 Response: 56716024
 Conc: 390.76 ng/ml



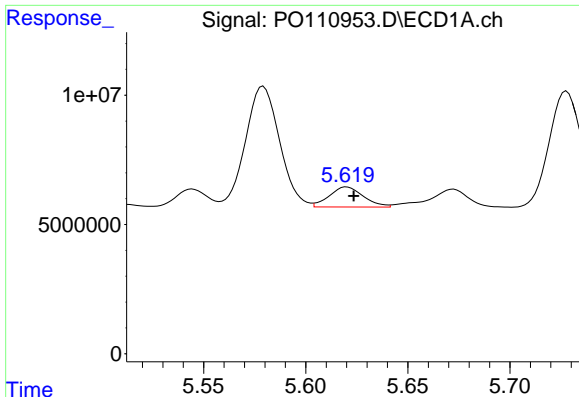
#24 AR-1248-4

R.T.: 5.579 min
 Delta R.T.: -0.003 min
 Response: 54287587
 Conc: 165.66 ng/ml



#24 AR-1248-4

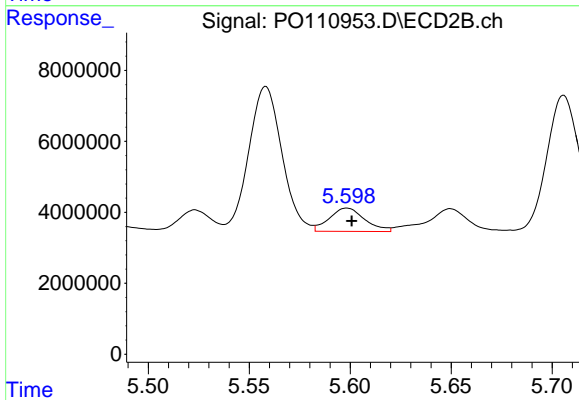
R.T.: 5.207 min
 Delta R.T.: -0.002 min
 Response: 58133787
 Conc: 347.03 ng/ml



#25 AR-1248-5

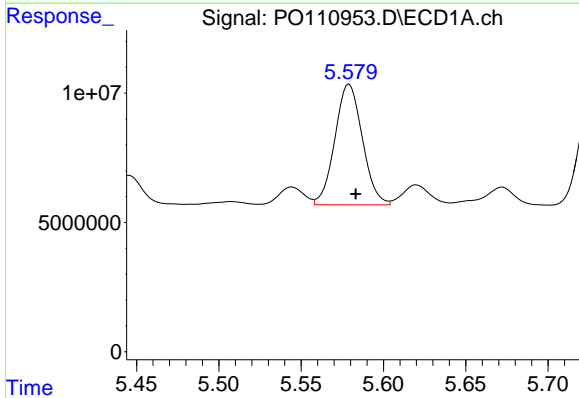
R.T.: 5.620 min
 Delta R.T.: -0.003 min
 Response: 9024201
 Conc: 38.66 ng/ml

Instrument :
 ECD_O
 ClientSampleId :
 PB167900BS



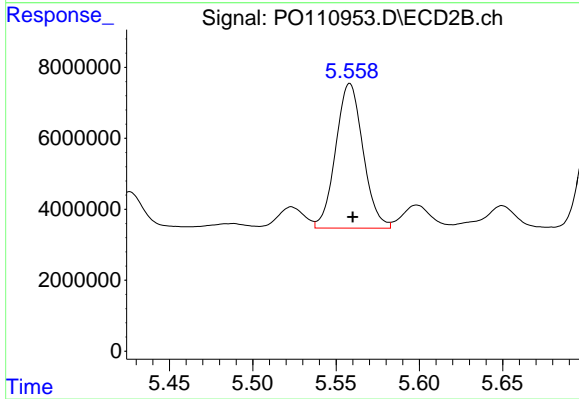
#25 AR-1248-5

R.T.: 5.598 min
 Delta R.T.: -0.002 min
 Response: 8063394
 Conc: 48.03 ng/ml



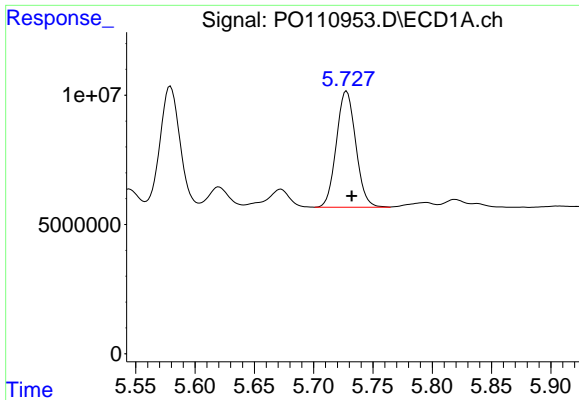
#26 AR-1254-1

R.T.: 5.579 min
 Delta R.T.: -0.004 min
 Response: 54287587
 Conc: 160.82 ng/ml



#26 AR-1254-1

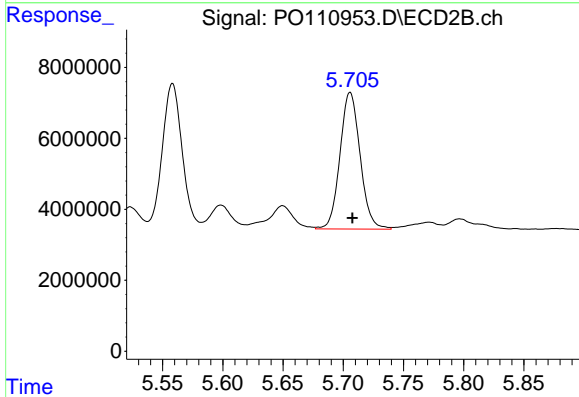
R.T.: 5.558 min
 Delta R.T.: -0.002 min
 Response: 46646128
 Conc: 185.82 ng/ml



#27 AR-1254-2

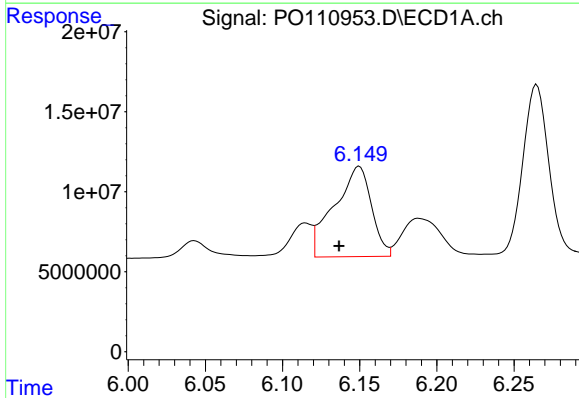
R.T.: 5.728 min
 Delta R.T.: -0.004 min
 Response: 51185225
 Conc: 177.91 ng/ml

Instrument :
 ECD_O
 ClientSampleId :
 PB167900BS



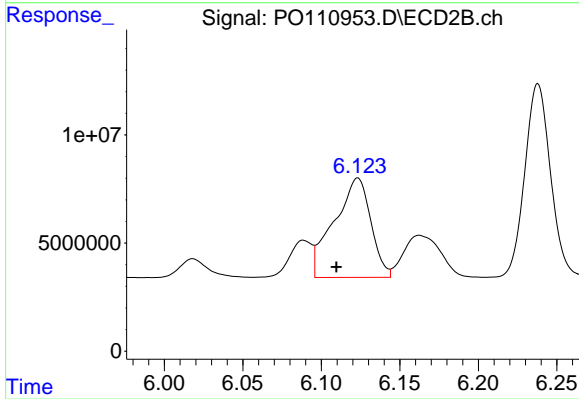
#27 AR-1254-2

R.T.: 5.706 min
 Delta R.T.: -0.002 min
 Response: 44874283
 Conc: 205.67 ng/ml



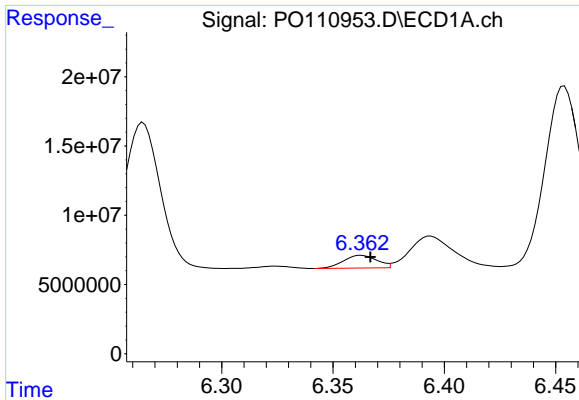
#28 AR-1254-3

R.T.: 6.150 min
 Delta R.T.: 0.013 min
 Response: 94980704
 Conc: 207.70 ng/ml



#28 AR-1254-3

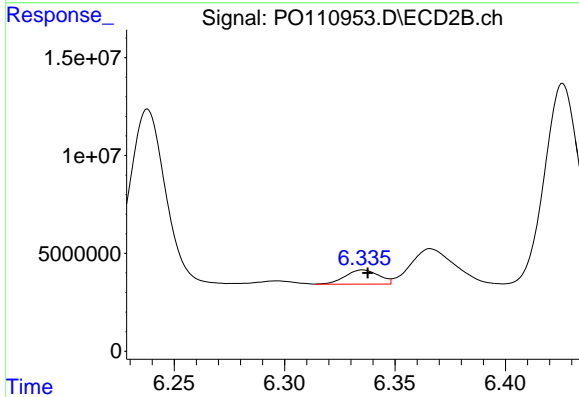
R.T.: 6.123 min
 Delta R.T.: 0.014 min
 Response: 74758549
 Conc: 223.69 ng/ml



#29 AR-1254-4

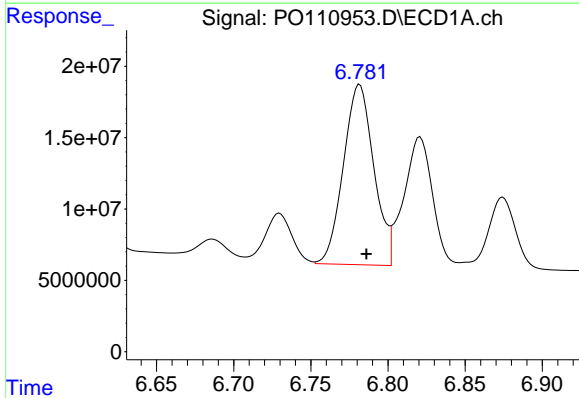
R.T.: 6.363 min
 Delta R.T.: -0.004 min
 Response: 9599956
 Conc: 31.49 ng/ml

Instrument :
 ECD_O
 ClientSampleId :
 PB167900BS



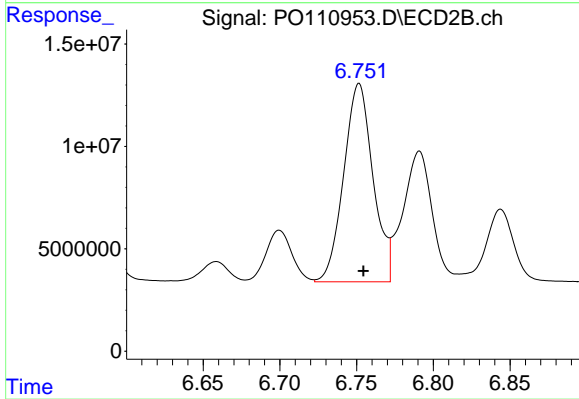
#29 AR-1254-4

R.T.: 6.335 min
 Delta R.T.: -0.002 min
 Response: 7716667
 Conc: 39.74 ng/ml



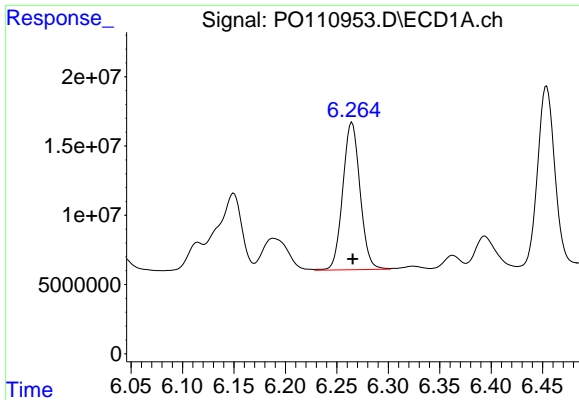
#30 AR-1254-5

R.T.: 6.782 min
 Delta R.T.: -0.004 min
 Response: 173171750
 Conc: 410.47 ng/ml



#30 AR-1254-5

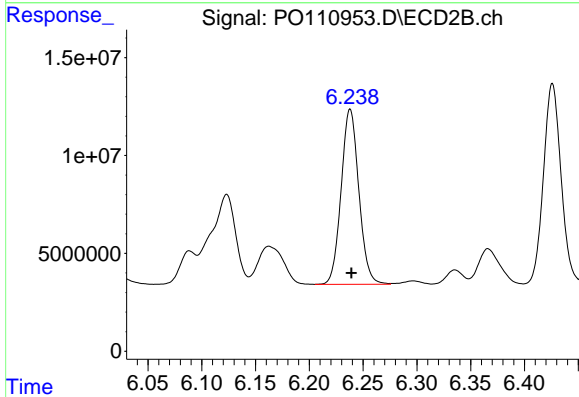
R.T.: 6.752 min
 Delta R.T.: -0.003 min
 Response: 129157744
 Conc: 481.43 ng/ml



#31 AR-1260-1

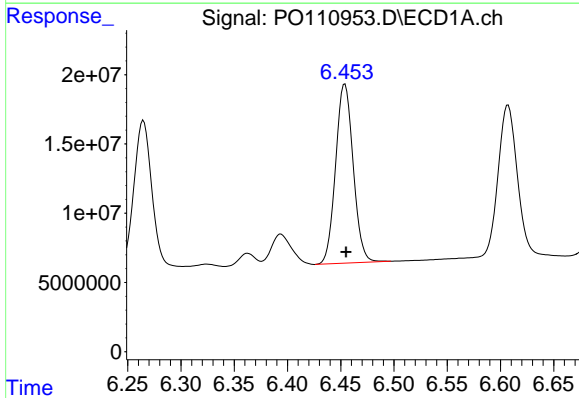
R.T.: 6.265 min
 Delta R.T.: 0.000 min
 Response: 124487697
 Conc: 374.26 ng/ml

Instrument :
 ECD_O
 ClientSampleId :
 PB167900BS



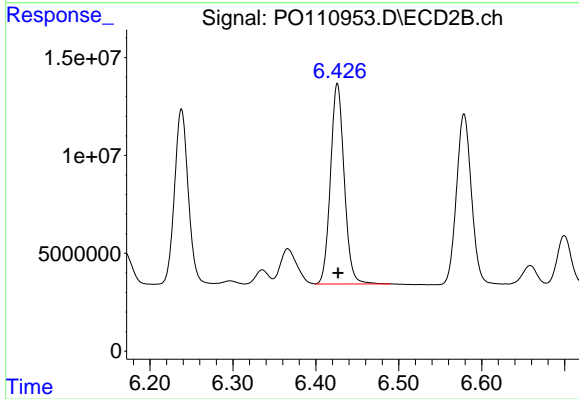
#31 AR-1260-1

R.T.: 6.238 min
 Delta R.T.: -0.001 min
 Response: 102427536
 Conc: 463.96 ng/ml



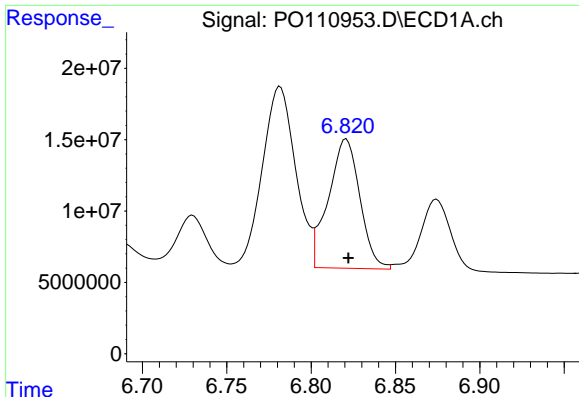
#32 AR-1260-2

R.T.: 6.454 min
 Delta R.T.: -0.001 min
 Response: 148430832
 Conc: 357.83 ng/ml



#32 AR-1260-2

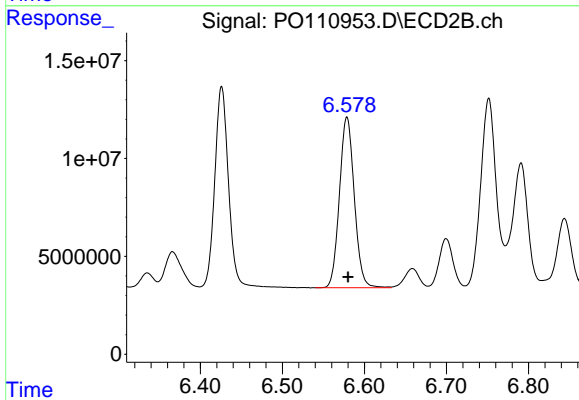
R.T.: 6.426 min
 Delta R.T.: 0.000 min
 Response: 117664500
 Conc: 457.43 ng/ml



#33 AR-1260-3

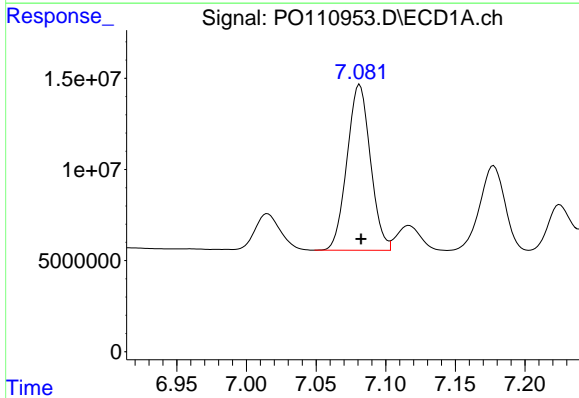
R.T.: 6.821 min
 Delta R.T.: -0.001 min
 Response: 117635203
 Conc: 333.94 ng/ml

Instrument :
 ECD_O
 ClientSampleId :
 PB167900BS



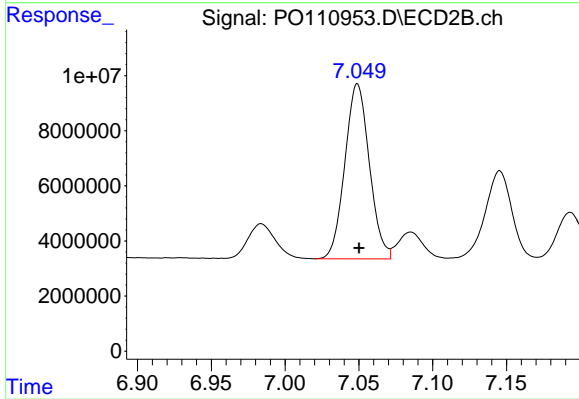
#33 AR-1260-3

R.T.: 6.579 min
 Delta R.T.: -0.001 min
 Response: 109752956
 Conc: 470.75 ng/ml



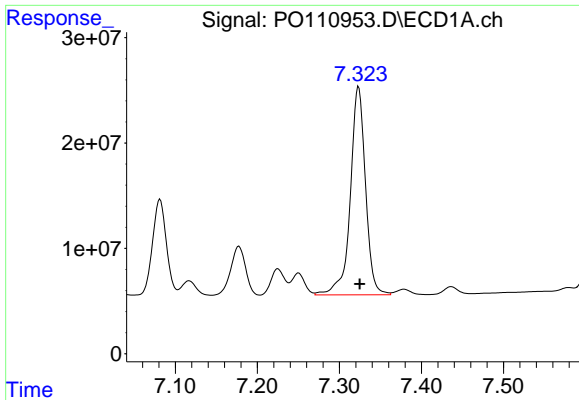
#34 AR-1260-4

R.T.: 7.081 min
 Delta R.T.: 0.000 min
 Response: 106286677
 Conc: 349.36 ng/ml



#34 AR-1260-4

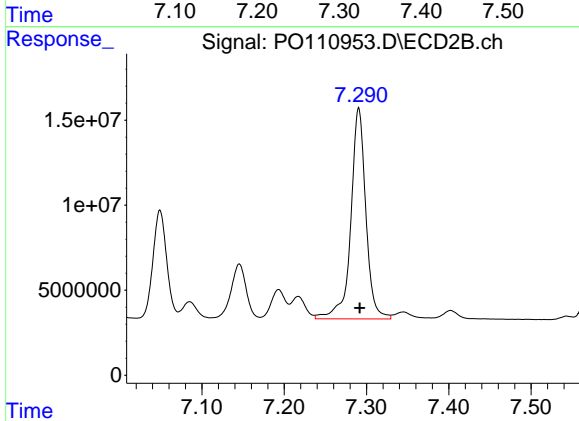
R.T.: 7.049 min
 Delta R.T.: -0.001 min
 Response: 73396004
 Conc: 403.06 ng/ml



#35 AR-1260-5

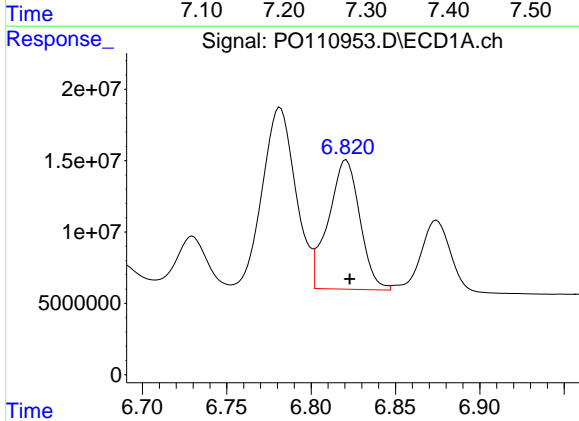
R.T.: 7.323 min
 Delta R.T.: -0.001 min
 Response: 254478511
 Conc: 346.52 ng/ml

Instrument :
 ECD_O
 ClientSampleId :
 PB167900BS



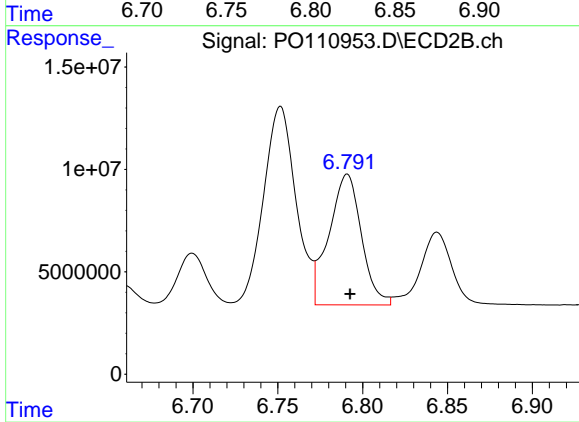
#35 AR-1260-5

R.T.: 7.291 min
 Delta R.T.: -0.001 min
 Response: 157887165
 Conc: 401.55 ng/ml



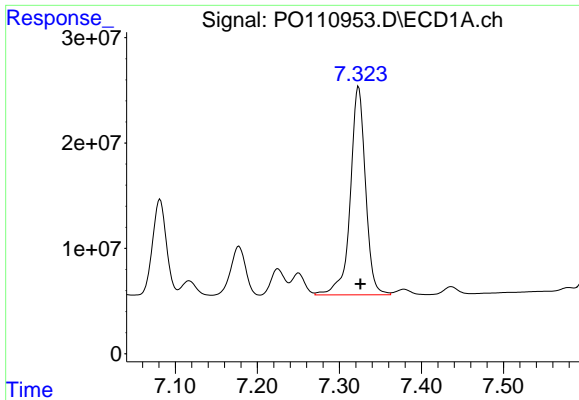
#36 AR-1262-1

R.T.: 6.821 min
 Delta R.T.: -0.002 min
 Response: 117635203
 Conc: 255.49 ng/ml



#36 AR-1262-1

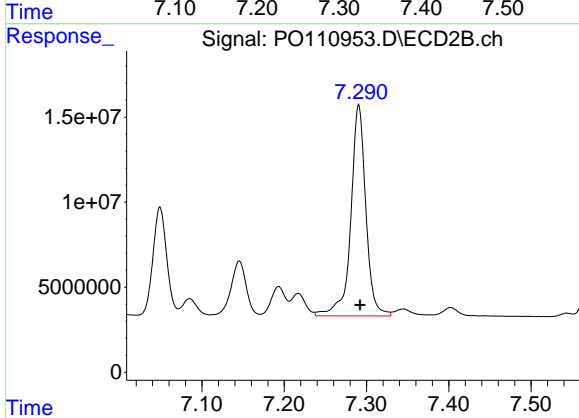
R.T.: 6.791 min
 Delta R.T.: -0.002 min
 Response: 84901139
 Conc: 300.64 ng/ml



#37 AR-1262-2

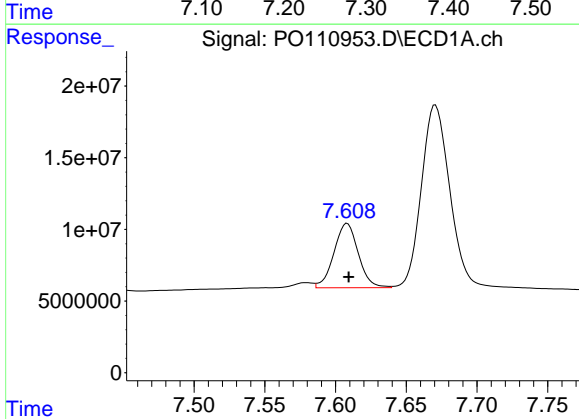
R.T.: 7.323 min
 Delta R.T.: -0.002 min
 Response: 254478511
 Conc: 323.56 ng/ml

Instrument :
 ECD_O
 ClientSampleId :
 PB167900BS



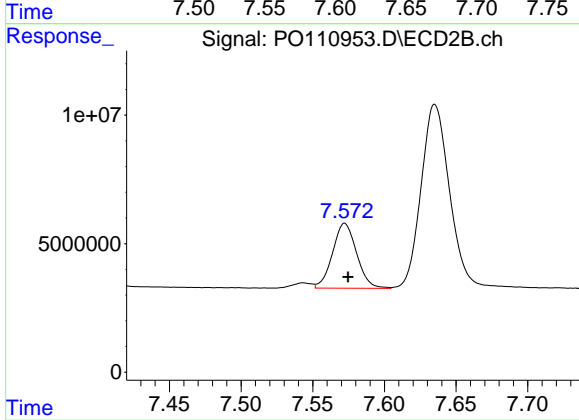
#37 AR-1262-2

R.T.: 7.291 min
 Delta R.T.: -0.002 min
 Response: 157887165
 Conc: 359.40 ng/ml



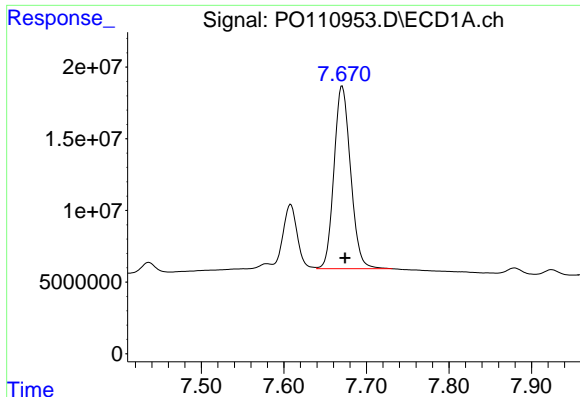
#38 AR-1262-3

R.T.: 7.608 min
 Delta R.T.: -0.001 min
 Response: 53826974
 Conc: 161.12 ng/ml



#38 AR-1262-3

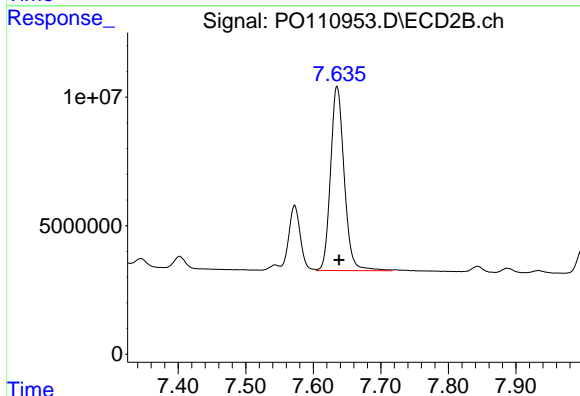
R.T.: 7.572 min
 Delta R.T.: -0.002 min
 Response: 29551435
 Conc: 182.01 ng/ml



#39 AR-1262-4

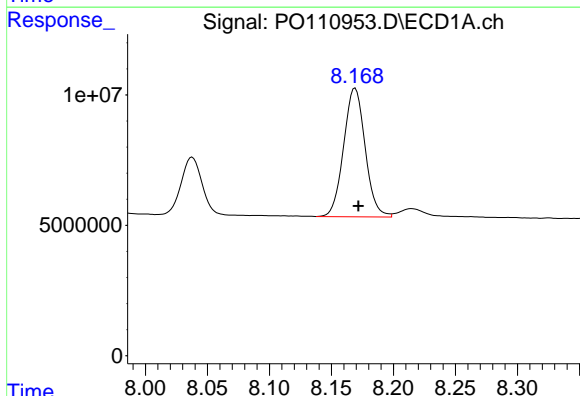
R.T.: 7.671 min
 Delta R.T.: -0.003 min
 Response: 177928842
 Conc: 307.56 ng/ml

Instrument :
 ECD_O
 ClientSampleId :
 PB167900BS



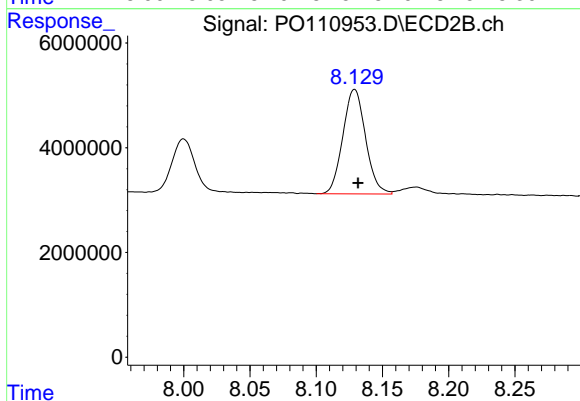
#39 AR-1262-4

R.T.: 7.635 min
 Delta R.T.: -0.003 min
 Response: 100626823
 Conc: 345.64 ng/ml



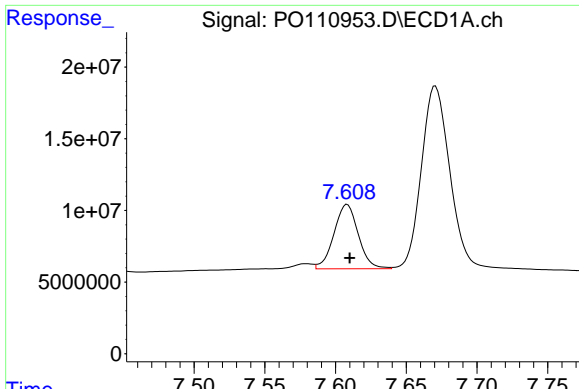
#40 AR-1262-5

R.T.: 8.169 min
 Delta R.T.: -0.003 min
 Response: 59625744
 Conc: 223.49 ng/ml



#40 AR-1262-5

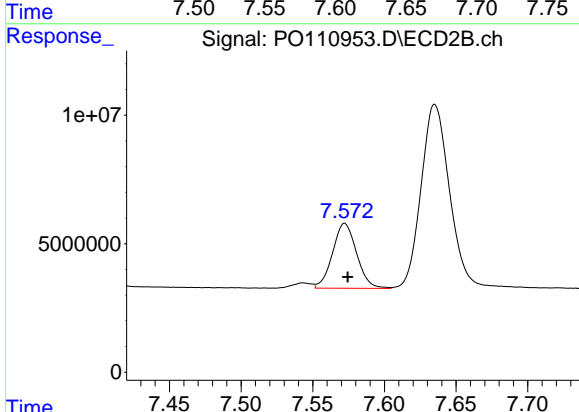
R.T.: 8.129 min
 Delta R.T.: -0.003 min
 Response: 23841599
 Conc: 241.82 ng/ml



#41 AR-1268-1

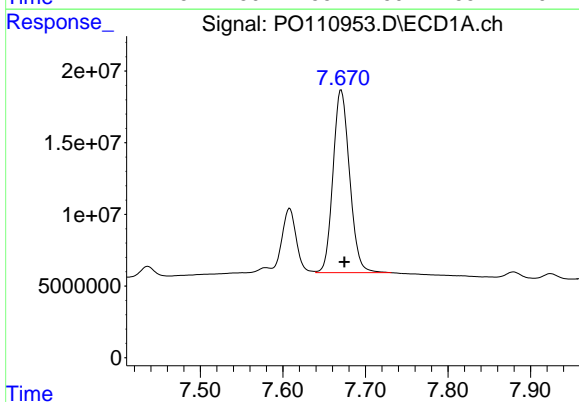
R.T.: 7.608 min
 Delta R.T.: -0.002 min
 Response: 53826974
 Conc: 60.49 ng/ml

Instrument :
 ECD_O
 ClientSampleId :
 PB167900BS



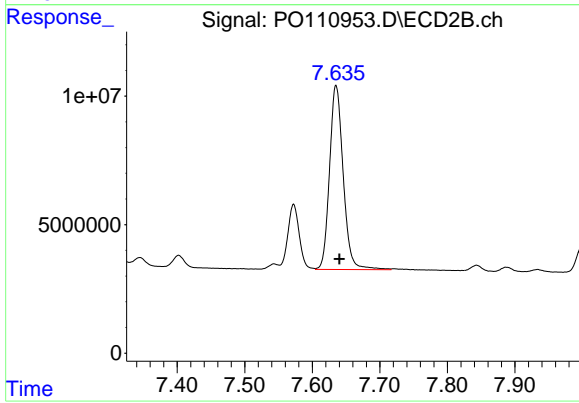
#41 AR-1268-1

R.T.: 7.572 min
 Delta R.T.: -0.002 min
 Response: 29551435
 Conc: 68.57 ng/ml



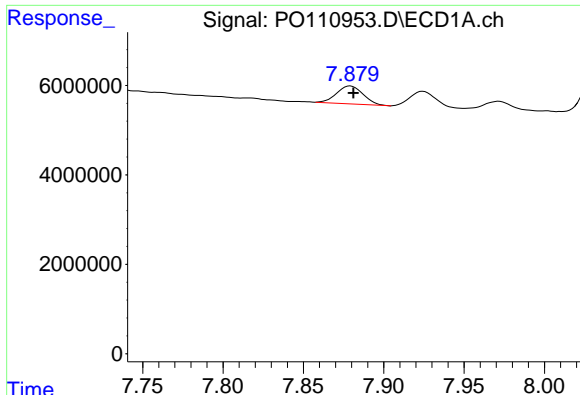
#42 AR-1268-2

R.T.: 7.671 min
 Delta R.T.: -0.004 min
 Response: 177928842
 Conc: 221.73 ng/ml



#42 AR-1268-2

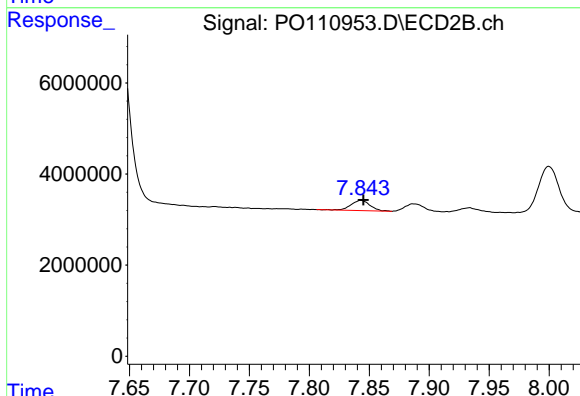
R.T.: 7.635 min
 Delta R.T.: -0.005 min
 Response: 100626823
 Conc: 262.13 ng/ml



#43 AR-1268-3

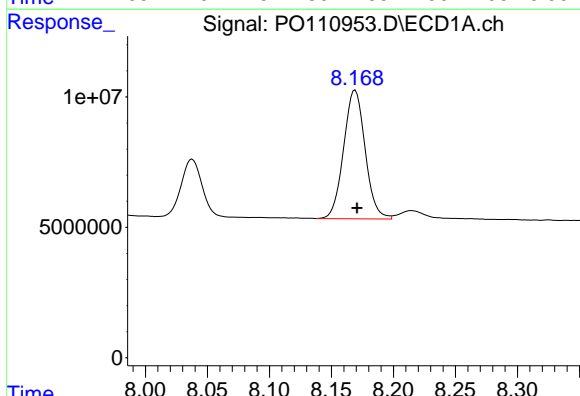
R.T.: 7.879 min
 Delta R.T.: -0.002 min
 Response: 4595791
 Conc: 6.69 ng/ml

Instrument :
 ECD_O
 ClientSampleId :
 PB167900BS



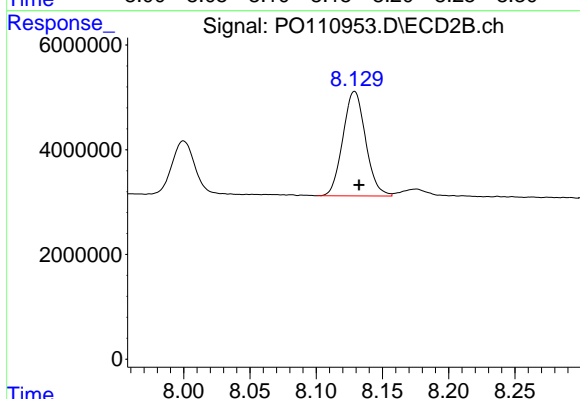
#43 AR-1268-3

R.T.: 7.843 min
 Delta R.T.: -0.002 min
 Response: 2496279
 Conc: 8.79 ng/ml



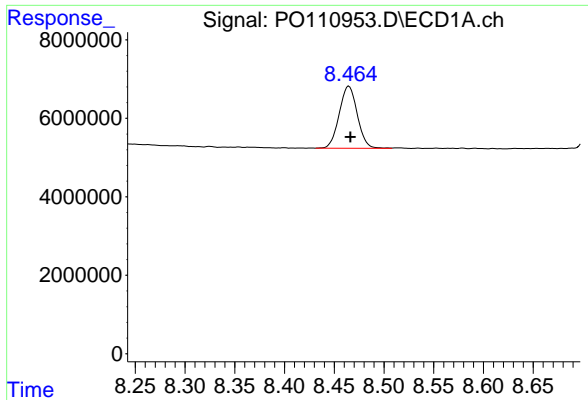
#44 AR-1268-4

R.T.: 8.169 min
 Delta R.T.: -0.002 min
 Response: 59625744
 Conc: 214.48 ng/ml



#44 AR-1268-4

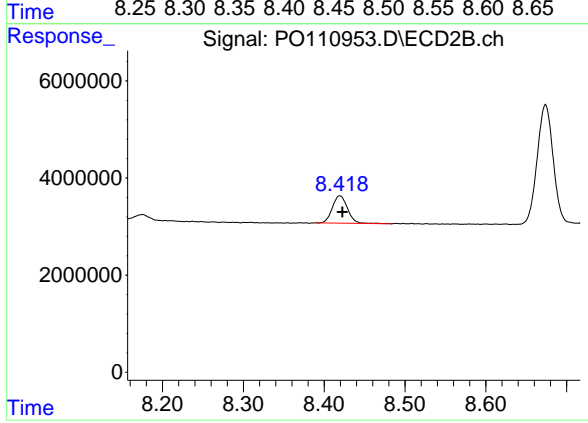
R.T.: 8.129 min
 Delta R.T.: -0.003 min
 Response: 23841599
 Conc: 228.98 ng/ml



#45 AR-1268-5

R.T.: 8.465 min
Delta R.T.: -0.002 min
Response: 20056579
Conc: 9.81 ng/ml

Instrument :
ECD_O
ClientSampleId :
PB167900BS



#45 AR-1268-5

R.T.: 8.419 min
Delta R.T.: -0.003 min
Response: 7299737
Conc: 12.03 ng/ml