

Data Path : Z:\pestpcbsrv\HPCHEM1\ECD\_O\Data\P0050825\  
 Data File : PO110962.D  
 Signal(s) : Signal #1: ECD1A.ch Signal #2: ECD2B.ch  
 Acq On : 08 May 2025 19:58  
 Operator : YP/AJ  
 Sample : AR1660CCC500  
 Misc :  
 ALS Vial : 30 Sample Multiplier: 1

Instrument :  
 ECD\_O  
 ClientSampleId :  
 AR1660CCC500

Integration File signal 1: autoint1.e  
 Integration File signal 2: autoint2.e  
 Quant Time: May 09 01:48:45 2025  
 Quant Method : Z:\pestpcbsrv\HPCHEM1\ECD\_O\methods\P0050225.M  
 Quant Title : GC EXTRACTABLES  
 QLast Update : Fri May 02 23:47:49 2025  
 Response via : Initial Calibration  
 Integrator: ChemStation

Volume Inj. : 2 µl  
 Signal #1 Phase : ZB-MR1 Signal #2 Phase: ZB-MR2  
 Signal #1 Info : 30Mx0.32mmx 0.50µ Signal #2 Info : 30M x 0.32mm x 0.25µm

Compound	RT#1	RT#2	Resp#1	Resp#2	ng/ml	ng/ml
System Monitoring Compounds						
1) SA Tetrachlo...	3.685	3.681	273.0E6	266.7E6	47.714	55.068
2) SA Decachlor...	8.726	8.675	222.3E6	82732812	36.426	49.034 #
Target Compounds						
3) L1 AR-1016-1	4.775	4.760	96408302	83889006	436.208	528.011
4) L1 AR-1016-2	4.795	4.779	137.1E6	122.2E6	442.026	534.842
5) L1 AR-1016-3	4.851	4.954	95888859	65191075	419.274	534.633 #
6) L1 AR-1016-4	4.971	4.996	75673461	53285394	452.612	528.830
7) L1 AR-1016-5	5.229	5.209	81349254	71432326	456.790	543.614
8) L2 AR-1221-1	3.896	3.889	10067831	9105267	115.632	136.786
9) L2 AR-1221-2	3.984	3.977	14817993	13556672	218.841	264.100
10) L2 AR-1221-3	4.060	4.052	53082866	48878737	268.406	319.391
11) L3 AR-1232-1	4.060	4.052	53082866	48878737	345.627	416.123
12) L3 AR-1232-2	4.553	4.779	72650236	122.2E6	881.883	1062.698
13) L3 AR-1232-3	4.795	4.954	137.1E6	65191075	861.830	1081.358 #
14) L3 AR-1232-4	4.971	5.039	75673461	64661242	899.048	1160.623 #
15) L3 AR-1232-5	5.014	5.209	58866972	71432326	999.909	1213.498
16) L4 AR-1242-1	4.775	4.760	96408302	83889006	524.164	633.954
17) L4 AR-1242-2	4.795	4.779	137.1E6	122.2E6	532.228	643.156
18) L4 AR-1242-3	4.851	4.954	95888859	65191075	526.544	643.412
19) L4 AR-1242-4	4.971	5.039	75673461	64661242	541.868	623.479
20) L4 AR-1242-5	5.624	5.560	23197265	69059693	148.801	545.643 #
21) L5 AR-1248-1	4.775	4.760	96408302	83889006	733.911	870.444
22) L5 AR-1248-2	5.014	4.996	58866972	53285394	335.936	394.351
23) L5 AR-1248-3	5.229	5.039	81349254	64661242	368.985	445.500
24) L5 AR-1248-4	5.582	5.209	80132169	71432326	244.518	426.420 #
25) L5 AR-1248-5	5.624	5.600	23197265	19257893	99.368	114.713
26) L6 AR-1254-1	5.582	5.560	80132169	69059693	237.379	275.112
27) L6 AR-1254-2	5.732	5.707	57197673	49491334	198.809	226.831
28) L6 AR-1254-3	6.152	6.125	107.6E6	86425713	235.355	258.597
29) L6 AR-1254-4	6.366	6.336	17147789	12525818	56.254	64.512
30) L6 AR-1254-5	6.785	6.753	182.9E6	136.6E6	433.507	509.152
31) L7 AR-1260-1	6.268	6.239	137.6E6	114.1E6	413.550	516.852
32) L7 AR-1260-2	6.457	6.427	172.6E6	133.2E6	416.144	517.953
33) L7 AR-1260-3	6.824	6.580	152.3E6	121.4E6	432.451	520.507
34) L7 AR-1260-4	7.084	7.050	125.3E6	92664249	411.804	508.876
35) L7 AR-1260-5	7.327	7.292	295.9E6	200.1E6	402.892	508.932 #
36) L8 AR-1262-1	6.824	6.792	152.3E6	108.9E6	330.866	385.781
37) L8 AR-1262-2	7.327	7.292	295.9E6	200.1E6	376.197	455.508
38) L8 AR-1262-3	7.610	7.574	72065349	42747222	215.715	263.283
39) L8 AR-1262-4	7.674	7.637	209.8E6	125.0E6	362.607	429.255
40) L8 AR-1262-5	8.172	8.131	90756011	35504839	340.171	360.115
41) L9 AR-1268-1	7.610	7.574	72065349	42747222	80.987	99.192

Data Path : Z:\pestpcbsrv\HPCHEM1\ECD\_0\Data\P0050825\  
 Data File : P0110962.D  
 Signal(s) : Signal #1: ECD1A.ch Signal #2: ECD2B.ch  
 Acq On : 08 May 2025 19:58  
 Operator : YP/AJ  
 Sample : AR1660CCC500  
 Misc :  
 ALS Vial : 30 Sample Multiplier: 1

Instrument :  
 ECD\_0  
 ClientSampleId :  
 AR1660CCC500

Integration File signal 1: autoint1.e  
 Integration File signal 2: autoint2.e  
 Quant Time: May 09 01:48:45 2025  
 Quant Method : Z:\pestpcbsrv\HPCHEM1\ECD\_0\methods\P0050225.M  
 Quant Title : GC EXTRACTABLES  
 QLast Update : Fri May 02 23:47:49 2025  
 Response via : Initial Calibration  
 Integrator: ChemStation

Volume Inj. : 2 µl  
 Signal #1 Phase : ZB-MR1 Signal #2 Phase: ZB-MR2  
 Signal #1 Info : 30Mx0.32mmx 0.50µ Signal #2 Info : 30M x 0.32mm x 0.25µm

	Compound	RT#1	RT#2	Resp#1	Resp#2	ng/ml	ng/ml
42)	L9 AR-1268-2	7.674	7.637	209.8E6	125.0E6	261.412	325.545
43)	L9 AR-1268-3	7.883	7.844	4718879	2476947	6.874	8.721 #
44)	L9 AR-1268-4	8.172	8.131	90756011	35504839	326.456	340.992
45)	L9 AR-1268-5	8.466	8.421	24338985	9285214	11.909	15.298 #

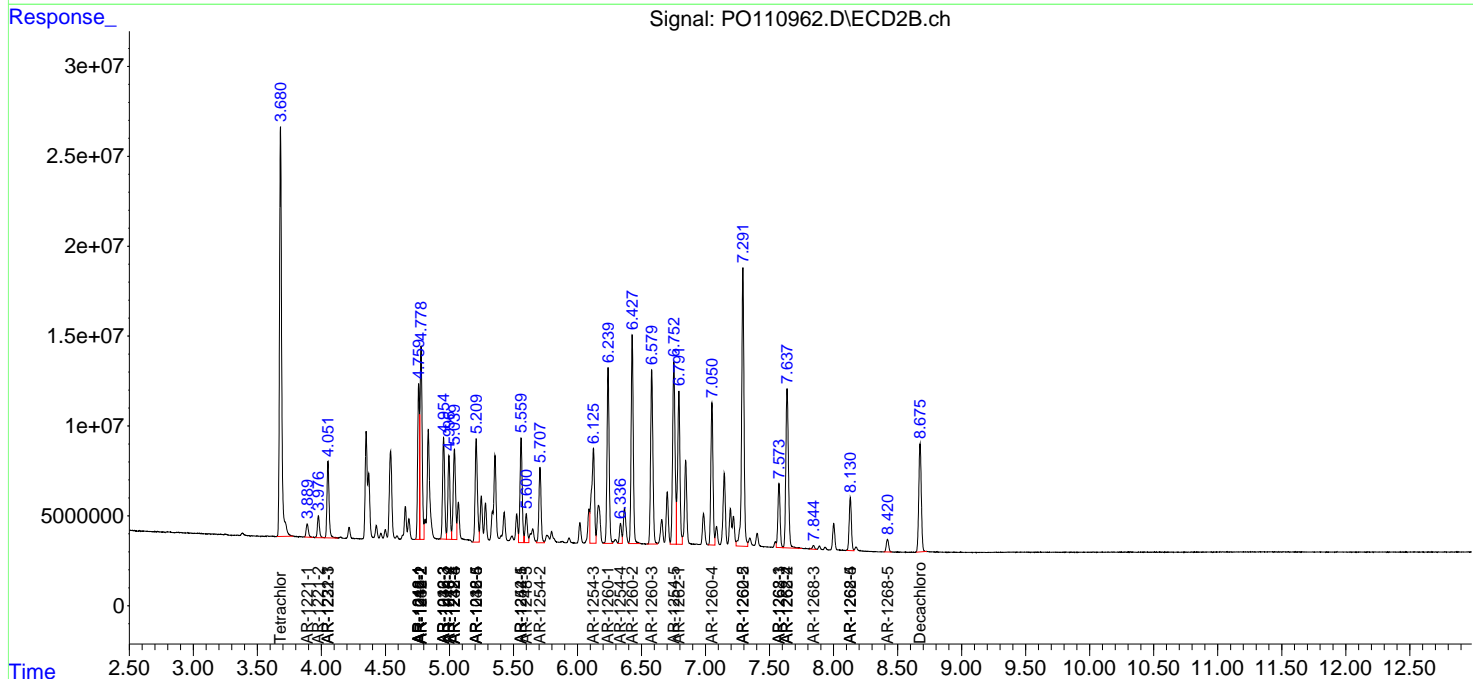
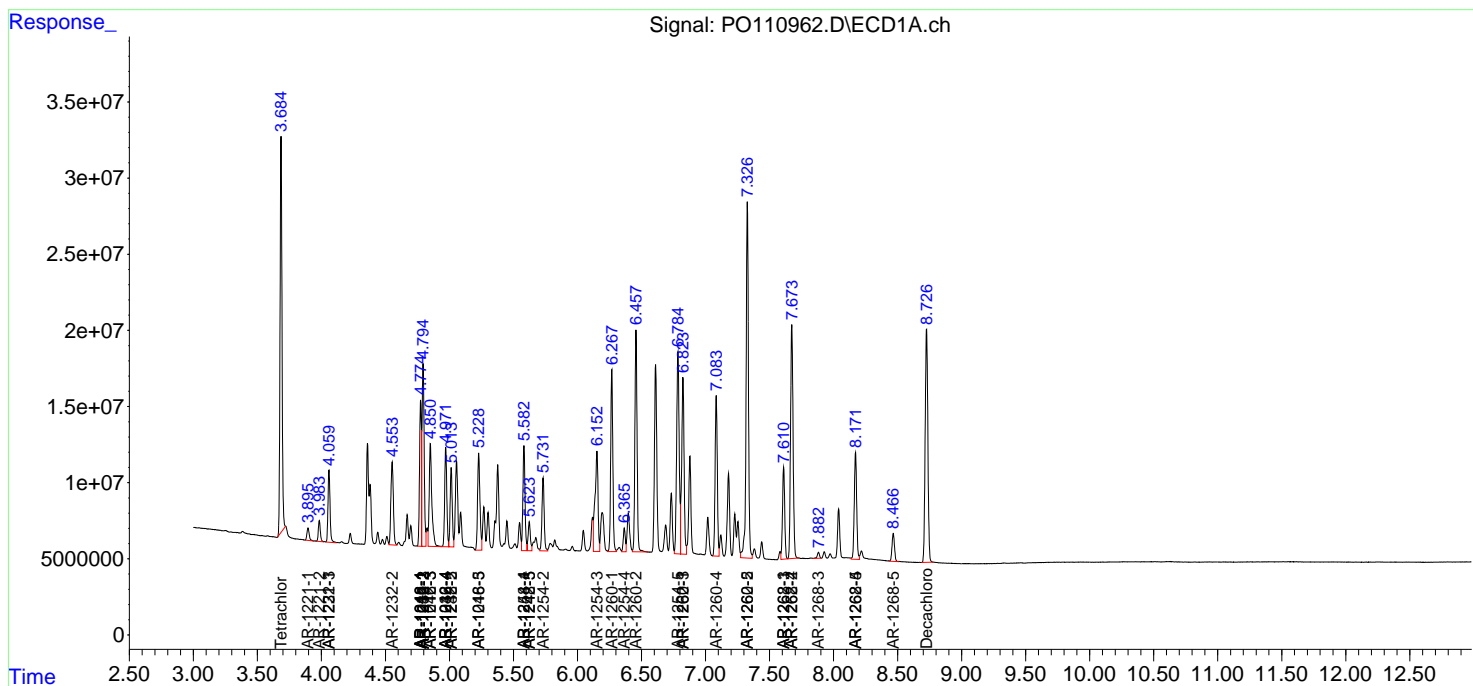
(f)=RT Delta > 1/2 Window (#)=Amounts differ by > 25% (m)=manual int.

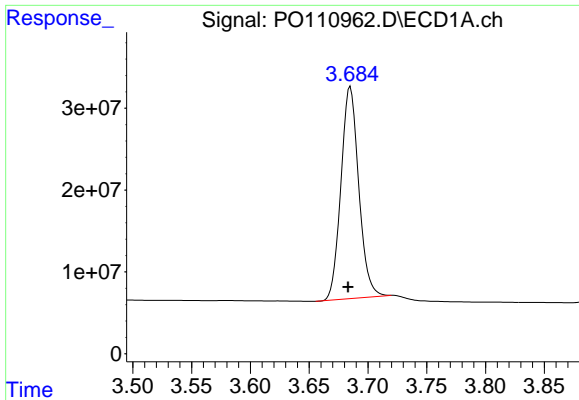
Data Path : Z:\pestpcbsrv\HPCHEM1\ECD\_O\Data\PO050825\  
 Data File : PO110962.D  
 Signal(s) : Signal #1: ECD1A.ch Signal #2: ECD2B.ch  
 Acq On : 08 May 2025 19:58  
 Operator : YP/AJ  
 Sample : AR1660CCC500  
 Misc :  
 ALS Vial : 30 Sample Multiplier: 1

Instrument :  
 ECD\_O  
 ClientSampleId :  
 AR1660CCC500

Integration File signal 1: autoint1.e  
 Integration File signal 2: autoint2.e  
 Quant Time: May 09 01:48:45 2025  
 Quant Method : Z:\pestpcbsrv\HPCHEM1\ECD\_O\methods\PO050225.M  
 Quant Title : GC EXTRACTABLES  
 QLast Update : Fri May 02 23:47:49 2025  
 Response via : Initial Calibration  
 Integrator: ChemStation

Volume Inj. : 2 µl  
 Signal #1 Phase : ZB-MR1 Signal #2 Phase: ZB-MR2  
 Signal #1 Info : 30Mx0.32mmx 0.50µ Signal #2 Info : 30M x 0.32mm x 0.25µm

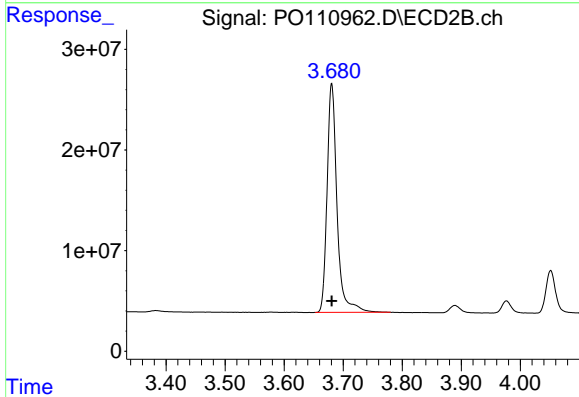




#1 Tetrachloro-m-xylene

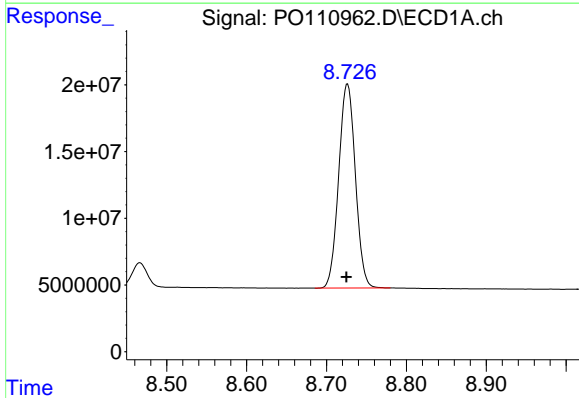
R.T.: 3.685 min  
 Delta R.T.: 0.002 min  
 Response: 272962307  
 Conc: 47.71 ng/ml

Instrument :  
 ECD\_O  
 ClientSampleId :  
 AR1660CCC500



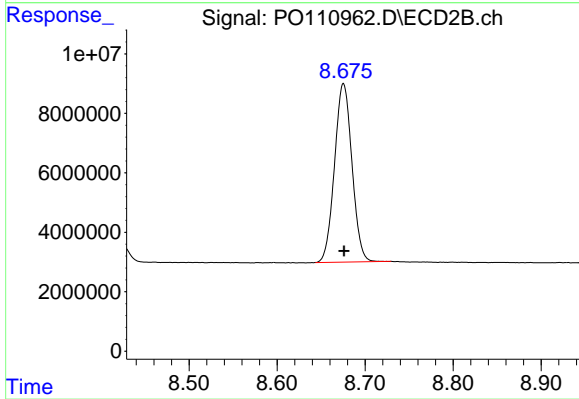
#1 Tetrachloro-m-xylene

R.T.: 3.681 min  
 Delta R.T.: 0.000 min  
 Response: 266698261  
 Conc: 55.07 ng/ml



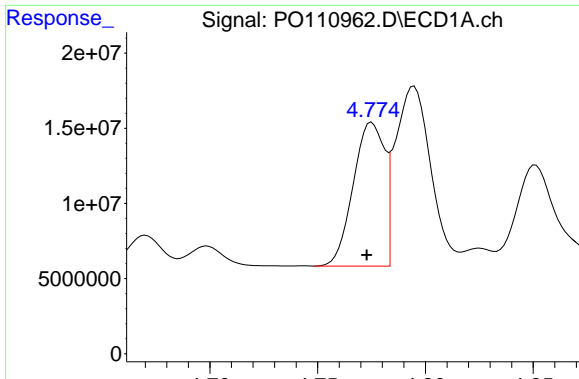
#2 Decachlorobiphenyl

R.T.: 8.726 min  
 Delta R.T.: 0.001 min  
 Response: 222286564  
 Conc: 36.43 ng/ml



#2 Decachlorobiphenyl

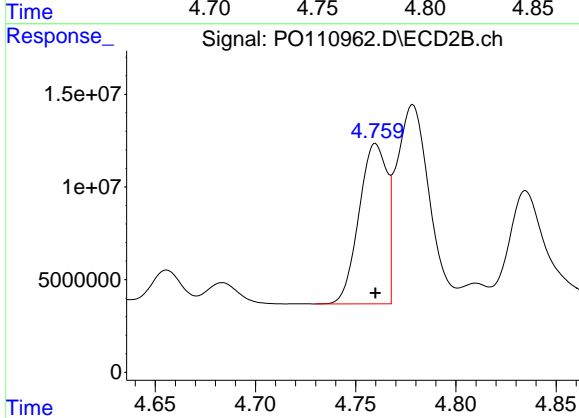
R.T.: 8.675 min  
 Delta R.T.: 0.000 min  
 Response: 82732812  
 Conc: 49.03 ng/ml



#3 AR-1016-1

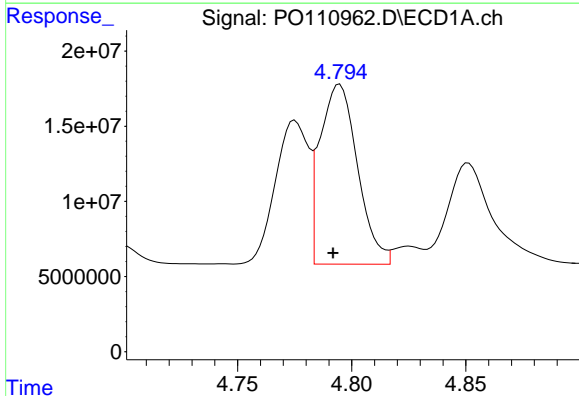
R.T.: 4.775 min  
 Delta R.T.: 0.002 min  
 Response: 96408302  
 Conc: 436.21 ng/ml

Instrument :  
 ECD\_O  
 ClientSampleId :  
 AR1660CCC500



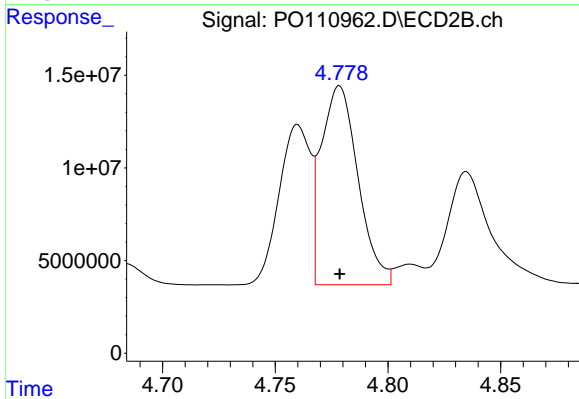
#3 AR-1016-1

R.T.: 4.760 min  
 Delta R.T.: 0.000 min  
 Response: 83889006  
 Conc: 528.01 ng/ml



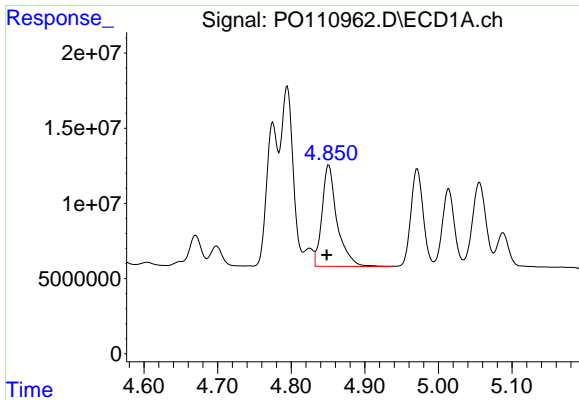
#4 AR-1016-2

R.T.: 4.795 min  
 Delta R.T.: 0.003 min  
 Response: 137104207  
 Conc: 442.03 ng/ml



#4 AR-1016-2

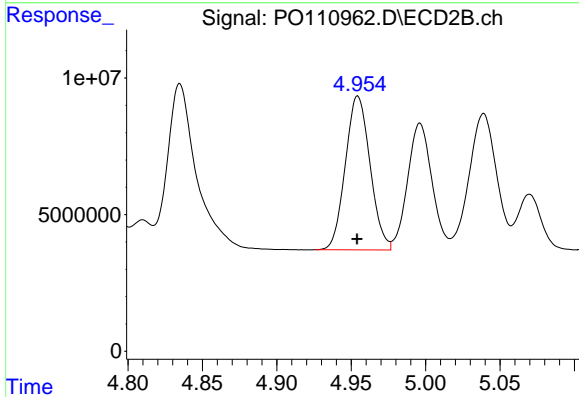
R.T.: 4.779 min  
 Delta R.T.: 0.000 min  
 Response: 122247448  
 Conc: 534.84 ng/ml



#5 AR-1016-3

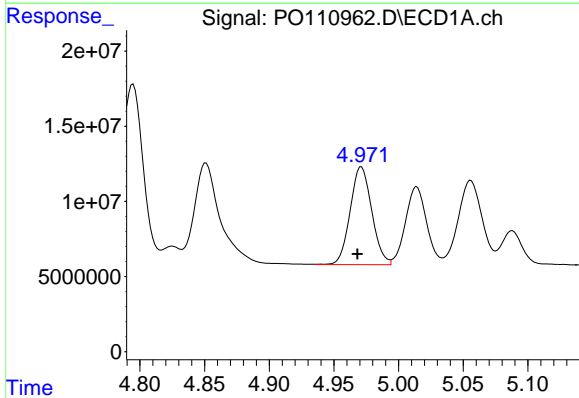
R.T.: 4.851 min  
 Delta R.T.: 0.003 min  
 Response: 95888859  
 Conc: 419.27 ng/ml

Instrument :  
 ECD\_O  
 ClientSampleId :  
 AR1660CCC500



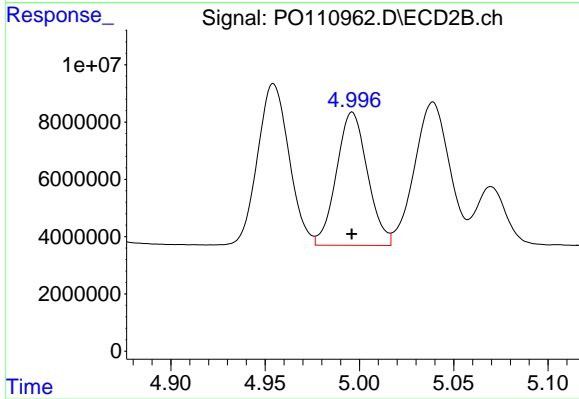
#5 AR-1016-3

R.T.: 4.954 min  
 Delta R.T.: 0.000 min  
 Response: 65191075  
 Conc: 534.63 ng/ml



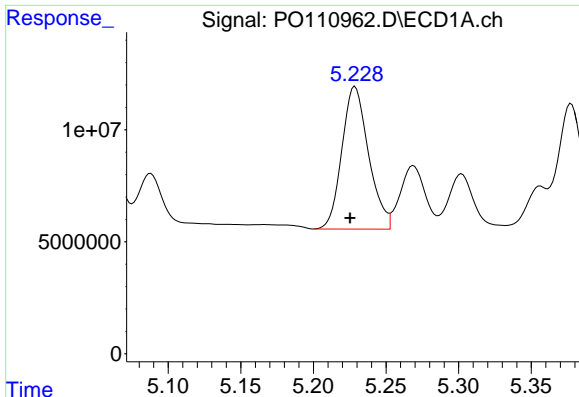
#6 AR-1016-4

R.T.: 4.971 min  
 Delta R.T.: 0.003 min  
 Response: 75673461  
 Conc: 452.61 ng/ml



#6 AR-1016-4

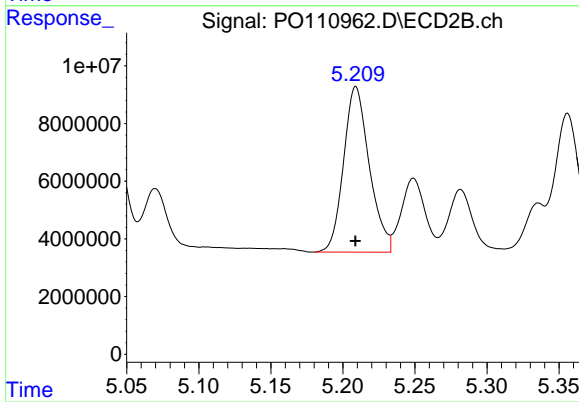
R.T.: 4.996 min  
 Delta R.T.: 0.000 min  
 Response: 53285394  
 Conc: 528.83 ng/ml



#7 AR-1016-5

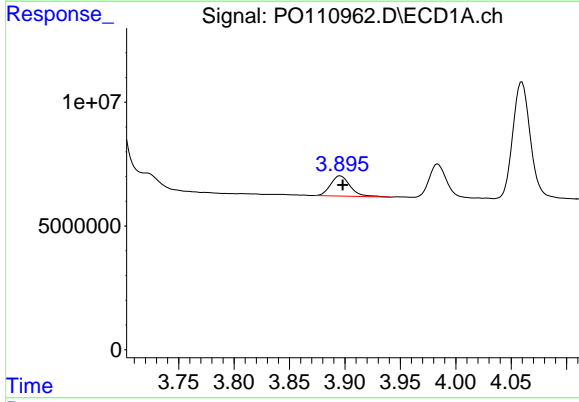
R.T.: 5.229 min  
 Delta R.T.: 0.003 min  
 Response: 81349254  
 Conc: 456.79 ng/ml

Instrument :  
 ECD\_O  
 ClientSampleId :  
 AR1660CCC500



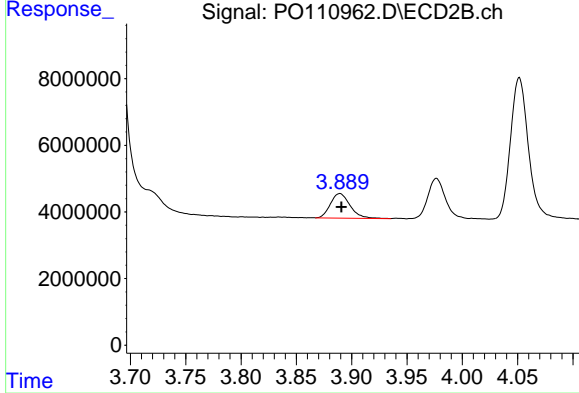
#7 AR-1016-5

R.T.: 5.209 min  
 Delta R.T.: 0.000 min  
 Response: 71432326  
 Conc: 543.61 ng/ml



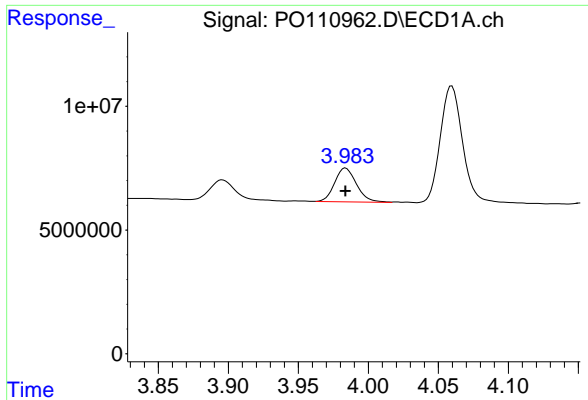
#8 AR-1221-1

R.T.: 3.896 min  
 Delta R.T.: -0.002 min  
 Response: 10067831  
 Conc: 115.63 ng/ml



#8 AR-1221-1

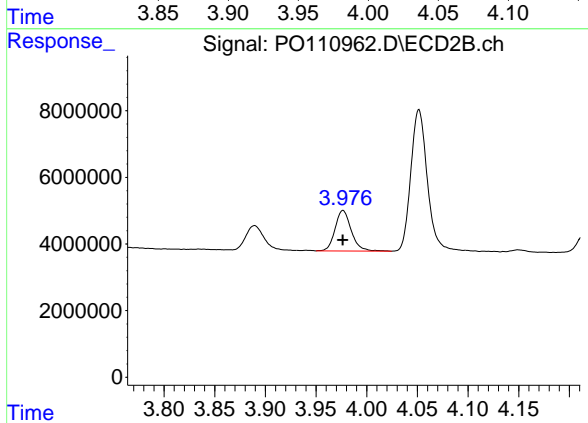
R.T.: 3.889 min  
 Delta R.T.: -0.002 min  
 Response: 9105267  
 Conc: 136.79 ng/ml



#9 AR-1221-2

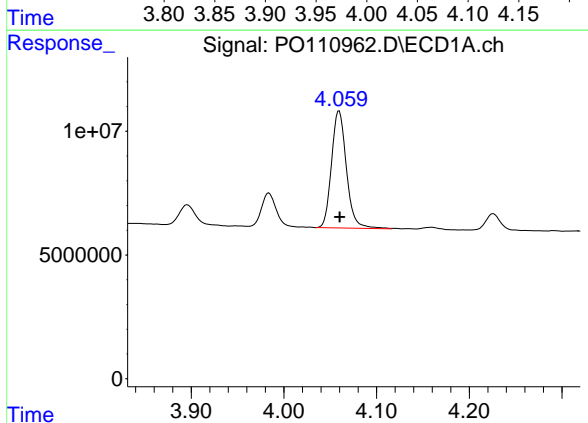
R.T.: 3.984 min  
 Delta R.T.: 0.000 min  
 Response: 14817993  
 Conc: 218.84 ng/ml

Instrument :  
 ECD\_O  
 ClientSampleId :  
 AR1660CCC500



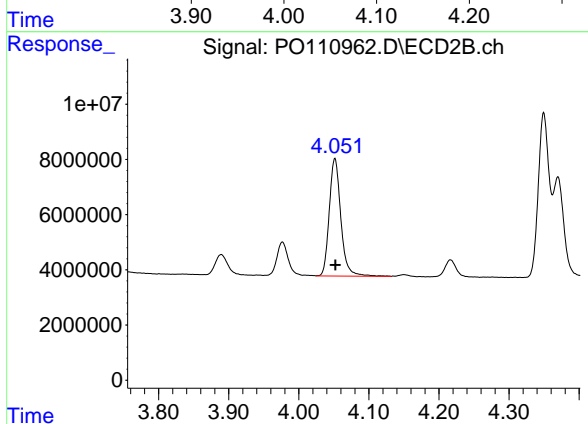
#9 AR-1221-2

R.T.: 3.977 min  
 Delta R.T.: 0.000 min  
 Response: 13556672  
 Conc: 264.10 ng/ml



#10 AR-1221-3

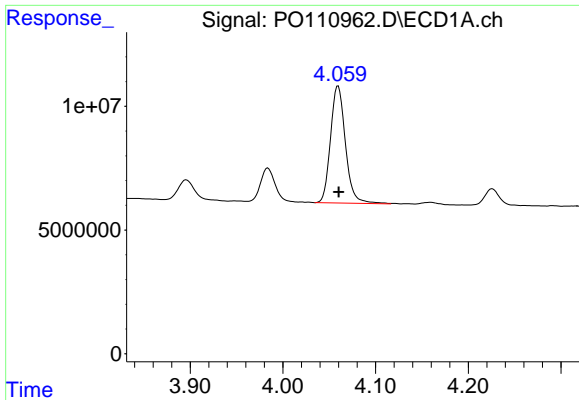
R.T.: 4.060 min  
 Delta R.T.: 0.000 min  
 Response: 53082866  
 Conc: 268.41 ng/ml



#10 AR-1221-3

R.T.: 4.052 min  
 Delta R.T.: 0.000 min  
 Response: 48878737  
 Conc: 319.39 ng/ml

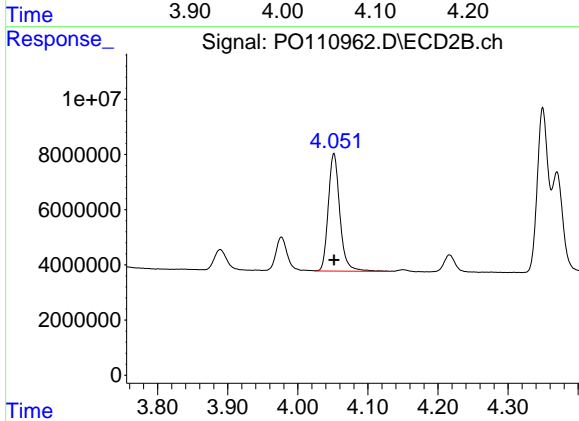




#11 AR-1232-1

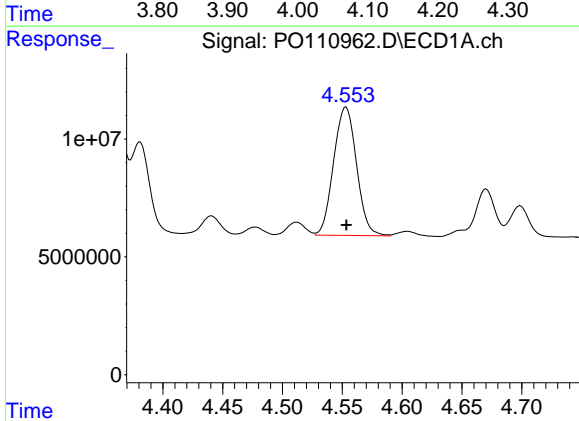
R.T.: 4.060 min  
 Delta R.T.: 0.000 min  
 Response: 53082866  
 Conc: 345.63 ng/ml

Instrument :  
 ECD\_O  
 ClientSampleId :  
 AR1660CCC500



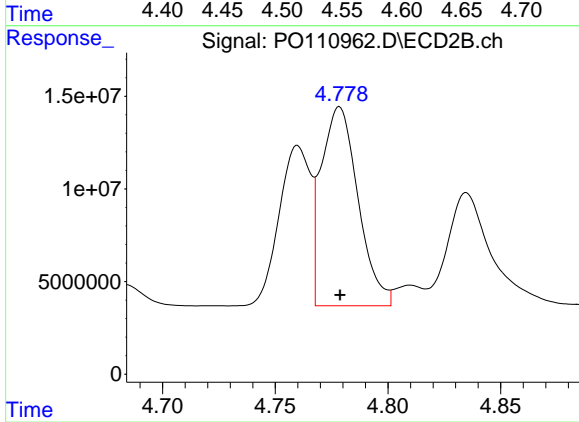
#11 AR-1232-1

R.T.: 4.052 min  
 Delta R.T.: 0.000 min  
 Response: 48878737  
 Conc: 416.12 ng/ml



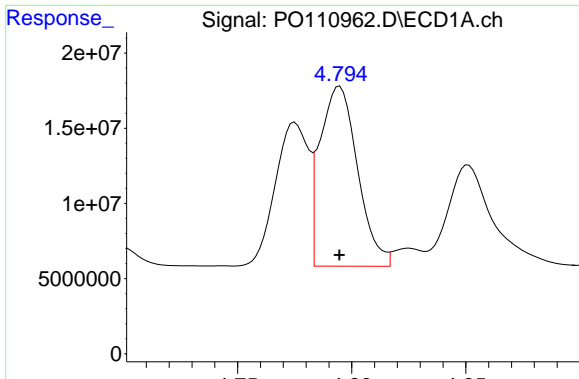
#12 AR-1232-2

R.T.: 4.553 min  
 Delta R.T.: 0.000 min  
 Response: 72650236  
 Conc: 881.88 ng/ml



#12 AR-1232-2

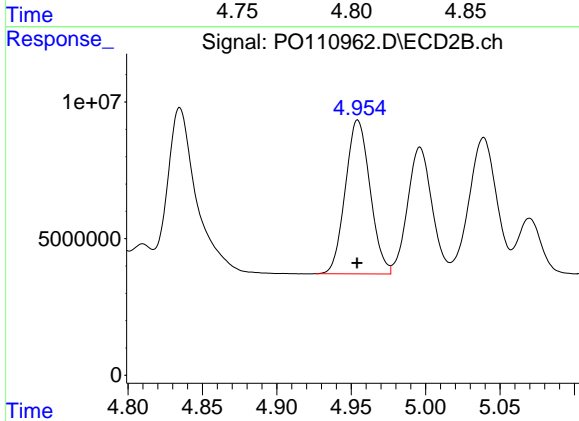
R.T.: 4.779 min  
 Delta R.T.: 0.000 min  
 Response: 122247448  
 Conc: 1062.70 ng/ml



#13 AR-1232-3

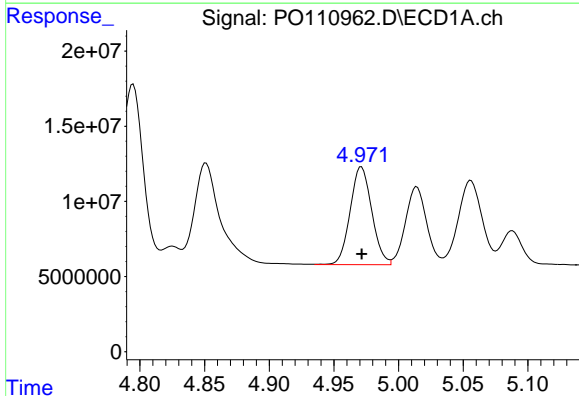
R.T.: 4.795 min  
 Delta R.T.: 0.000 min  
 Response: 137104207  
 Conc: 861.83 ng/ml

Instrument :  
 ECD\_O  
 ClientSampleId :  
 AR1660CCC500



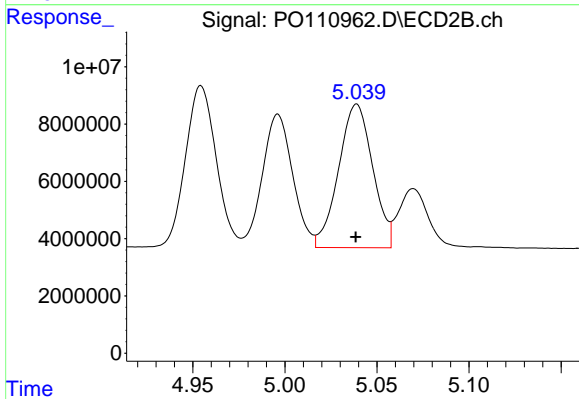
#13 AR-1232-3

R.T.: 4.954 min  
 Delta R.T.: 0.000 min  
 Response: 65191075  
 Conc: 1081.36 ng/ml



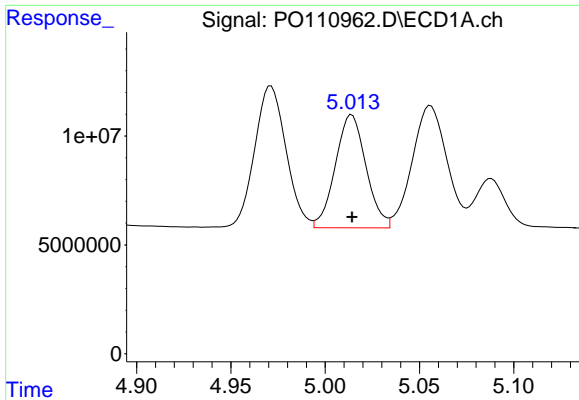
#14 AR-1232-4

R.T.: 4.971 min  
 Delta R.T.: 0.000 min  
 Response: 75673461  
 Conc: 899.05 ng/ml



#14 AR-1232-4

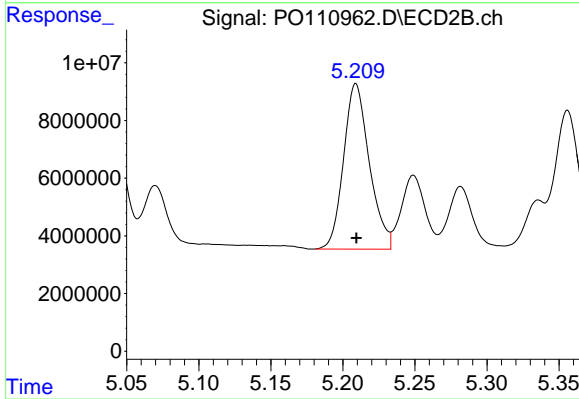
R.T.: 5.039 min  
 Delta R.T.: 0.000 min  
 Response: 64661242  
 Conc: 1160.62 ng/ml



#15 AR-1232-5

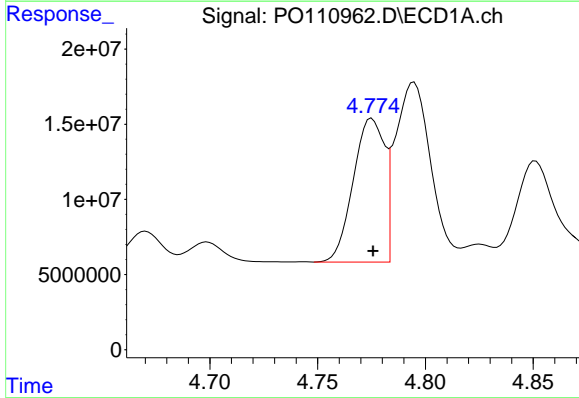
R.T.: 5.014 min  
 Delta R.T.: 0.000 min  
 Response: 58866972  
 Conc: 999.91 ng/ml

Instrument :  
 ECD\_O  
 ClientSampleId :  
 AR1660CCC500



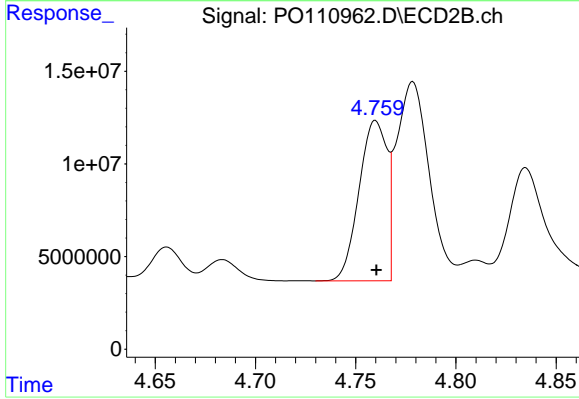
#15 AR-1232-5

R.T.: 5.209 min  
 Delta R.T.: 0.000 min  
 Response: 71432326  
 Conc: 1213.50 ng/ml



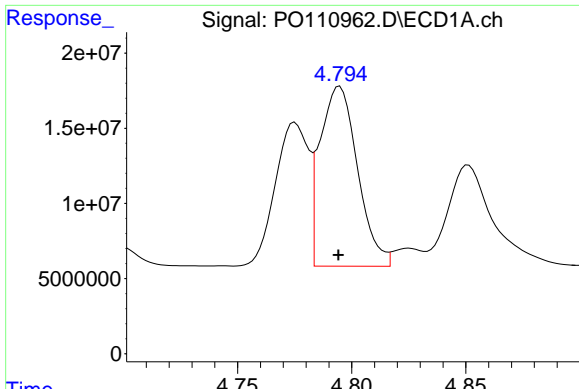
#16 AR-1242-1

R.T.: 4.775 min  
 Delta R.T.: 0.000 min  
 Response: 96408302  
 Conc: 524.16 ng/ml



#16 AR-1242-1

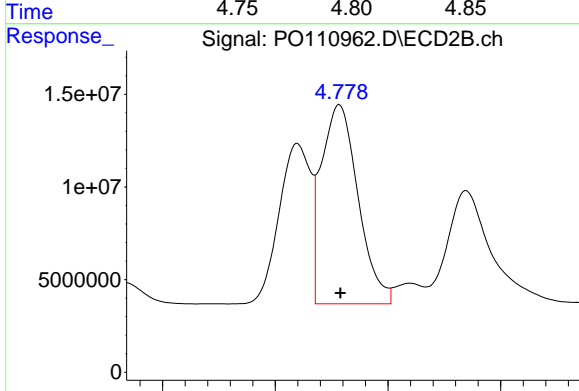
R.T.: 4.760 min  
 Delta R.T.: 0.000 min  
 Response: 83889006  
 Conc: 633.95 ng/ml



#17 AR-1242-2

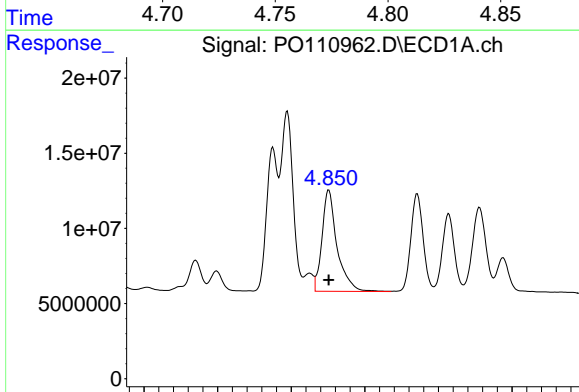
R.T.: 4.795 min  
 Delta R.T.: 0.000 min  
 Response: 137104207  
 Conc: 532.23 ng/ml

Instrument :  
 ECD\_O  
 ClientSampleId :  
 AR1660CCC500



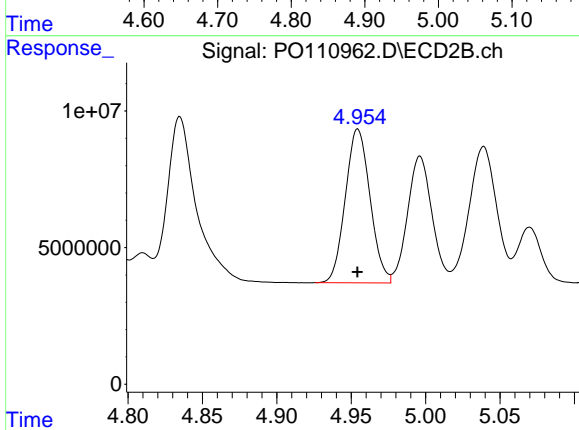
#17 AR-1242-2

R.T.: 4.779 min  
 Delta R.T.: 0.000 min  
 Response: 122247448  
 Conc: 643.16 ng/ml



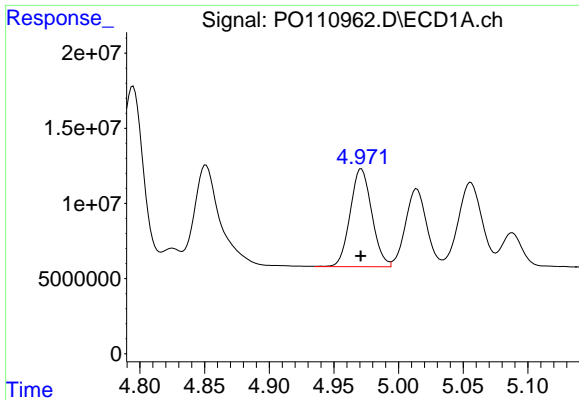
#18 AR-1242-3

R.T.: 4.851 min  
 Delta R.T.: 0.000 min  
 Response: 95888859  
 Conc: 526.54 ng/ml



#18 AR-1242-3

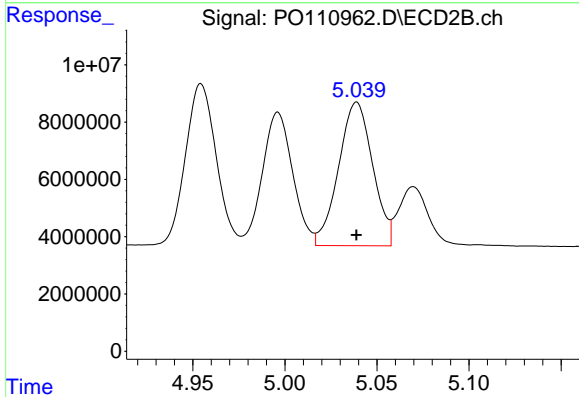
R.T.: 4.954 min  
 Delta R.T.: 0.000 min  
 Response: 65191075  
 Conc: 643.41 ng/ml



#19 AR-1242-4

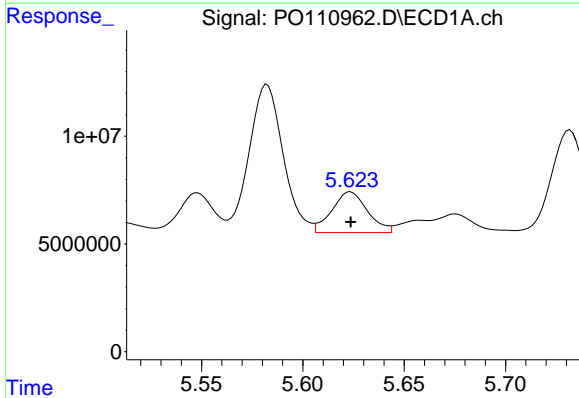
R.T.: 4.971 min  
 Delta R.T.: 0.000 min  
 Response: 75673461  
 Conc: 541.87 ng/ml

Instrument :  
 ECD\_O  
 ClientSampleId :  
 AR1660CCC500



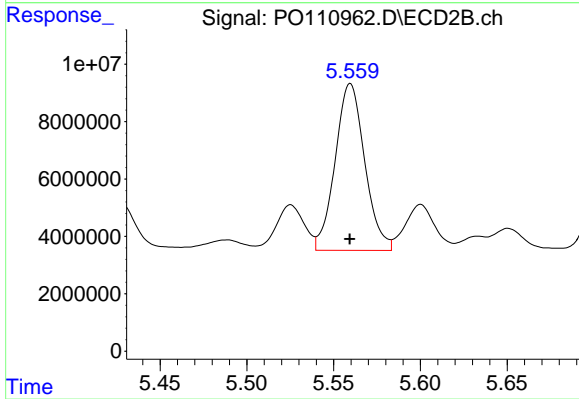
#19 AR-1242-4

R.T.: 5.039 min  
 Delta R.T.: 0.000 min  
 Response: 64661242  
 Conc: 623.48 ng/ml



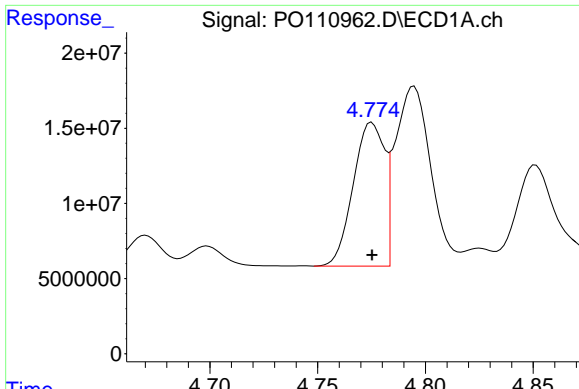
#20 AR-1242-5

R.T.: 5.624 min  
 Delta R.T.: 0.000 min  
 Response: 23197265  
 Conc: 148.80 ng/ml



#20 AR-1242-5

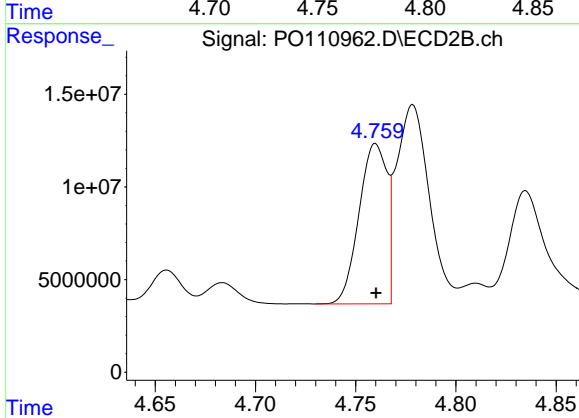
R.T.: 5.560 min  
 Delta R.T.: 0.000 min  
 Response: 69059693  
 Conc: 545.64 ng/ml



#21 AR-1248-1

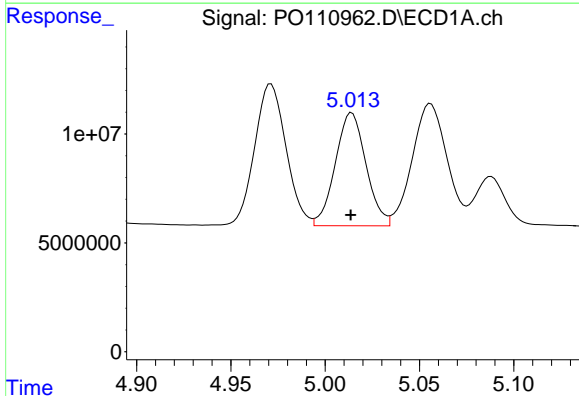
R.T.: 4.775 min  
 Delta R.T.: 0.000 min  
 Response: 96408302  
 Conc: 733.91 ng/ml

Instrument :  
 ECD\_O  
 ClientSampleId :  
 AR1660CCC500



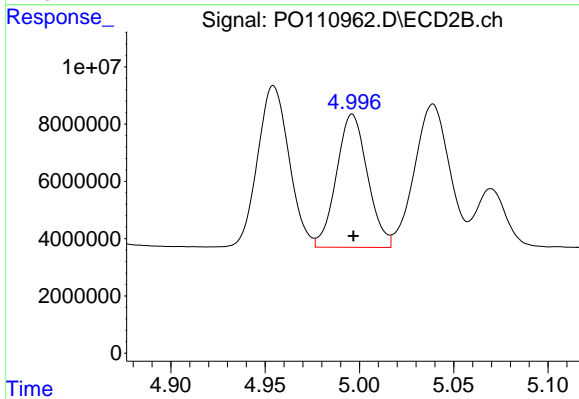
#21 AR-1248-1

R.T.: 4.760 min  
 Delta R.T.: 0.000 min  
 Response: 83889006  
 Conc: 870.44 ng/ml



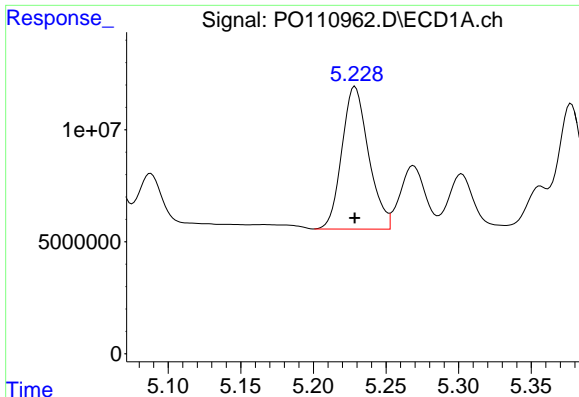
#22 AR-1248-2

R.T.: 5.014 min  
 Delta R.T.: 0.000 min  
 Response: 58866972  
 Conc: 335.94 ng/ml



#22 AR-1248-2

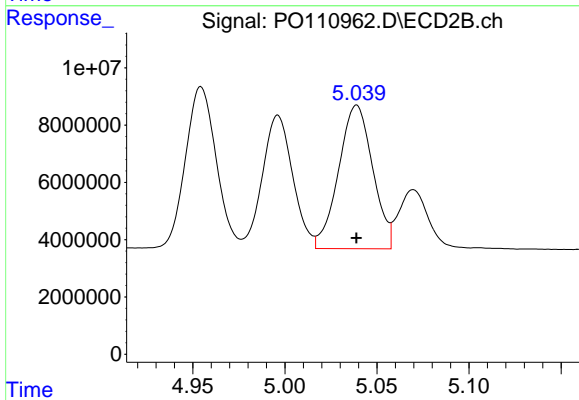
R.T.: 4.996 min  
 Delta R.T.: 0.000 min  
 Response: 53285394  
 Conc: 394.35 ng/ml



#23 AR-1248-3

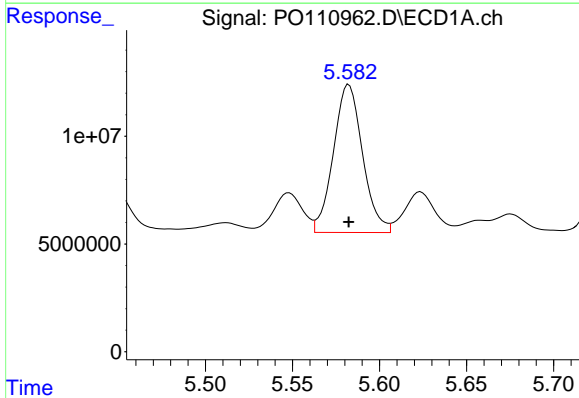
R.T.: 5.229 min  
 Delta R.T.: 0.000 min  
 Response: 81349254  
 Conc: 368.99 ng/ml

Instrument :  
 ECD\_O  
 ClientSampleId :  
 AR1660CCC500



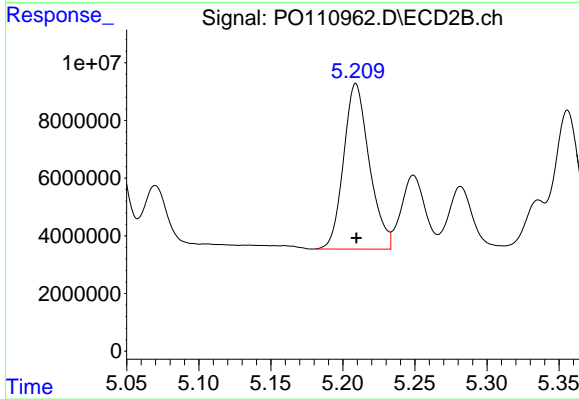
#23 AR-1248-3

R.T.: 5.039 min  
 Delta R.T.: 0.000 min  
 Response: 64661242  
 Conc: 445.50 ng/ml



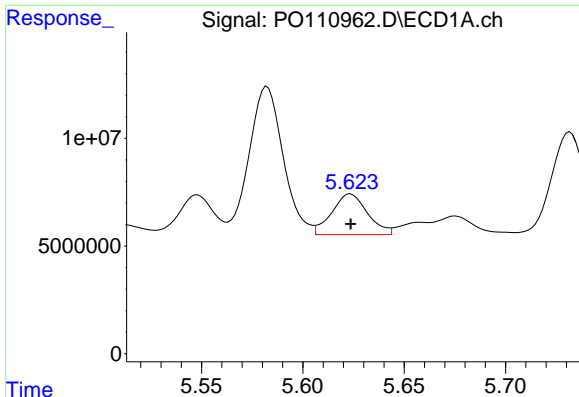
#24 AR-1248-4

R.T.: 5.582 min  
 Delta R.T.: 0.000 min  
 Response: 80132169  
 Conc: 244.52 ng/ml



#24 AR-1248-4

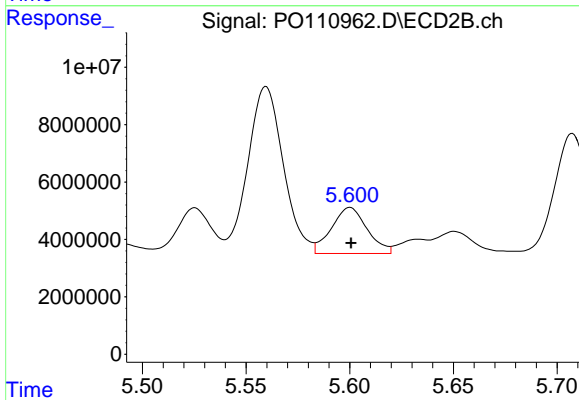
R.T.: 5.209 min  
 Delta R.T.: 0.000 min  
 Response: 71432326  
 Conc: 426.42 ng/ml



#25 AR-1248-5

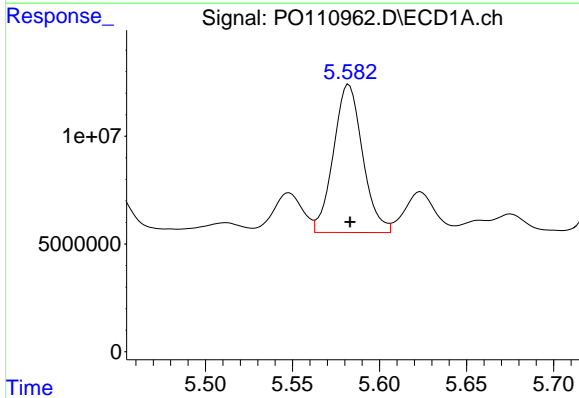
R.T.: 5.624 min  
 Delta R.T.: 0.000 min  
 Response: 23197265  
 Conc: 99.37 ng/ml

Instrument :  
 ECD\_O  
 ClientSampleId :  
 AR1660CCC500



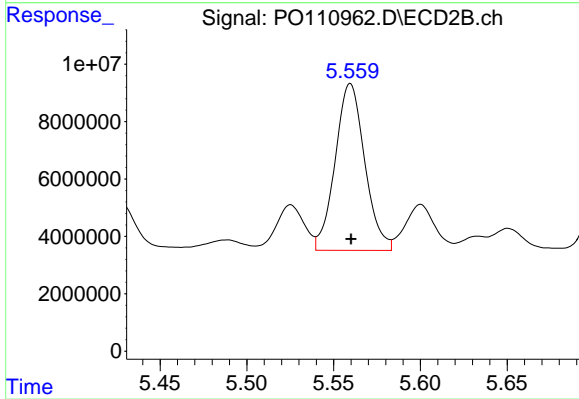
#25 AR-1248-5

R.T.: 5.600 min  
 Delta R.T.: 0.000 min  
 Response: 19257893  
 Conc: 114.71 ng/ml



#26 AR-1254-1

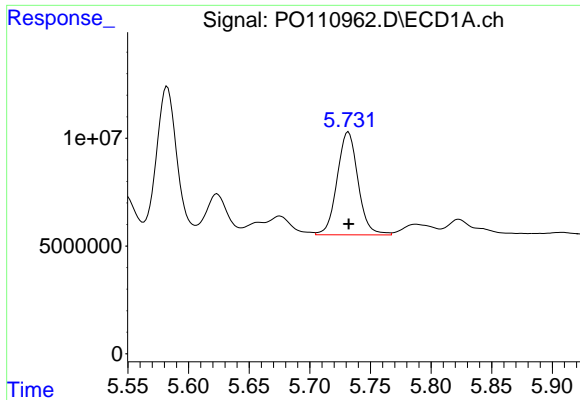
R.T.: 5.582 min  
 Delta R.T.: 0.000 min  
 Response: 80132169  
 Conc: 237.38 ng/ml



#26 AR-1254-1

R.T.: 5.560 min  
 Delta R.T.: 0.000 min  
 Response: 69059693  
 Conc: 275.11 ng/ml

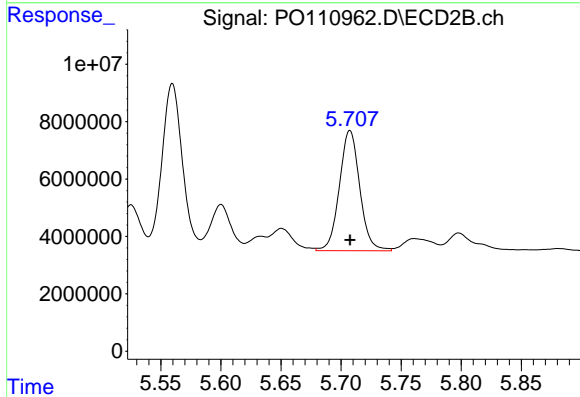




#27 AR-1254-2

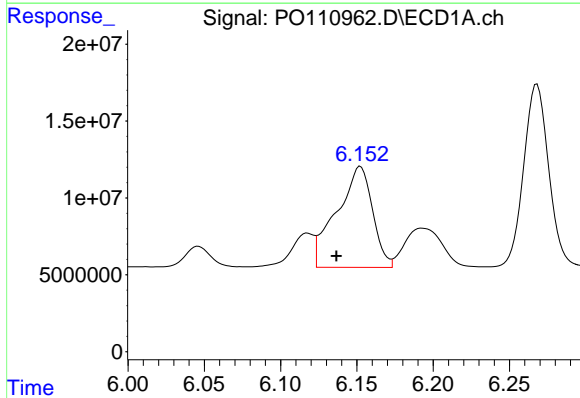
R.T.: 5.732 min  
 Delta R.T.: 0.000 min  
 Response: 57197673  
 Conc: 198.81 ng/ml

Instrument :  
 ECD\_O  
 ClientSampleId :  
 AR1660CCC500



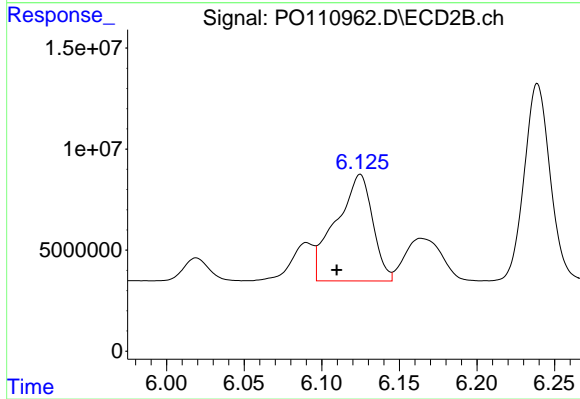
#27 AR-1254-2

R.T.: 5.707 min  
 Delta R.T.: 0.000 min  
 Response: 49491334  
 Conc: 226.83 ng/ml



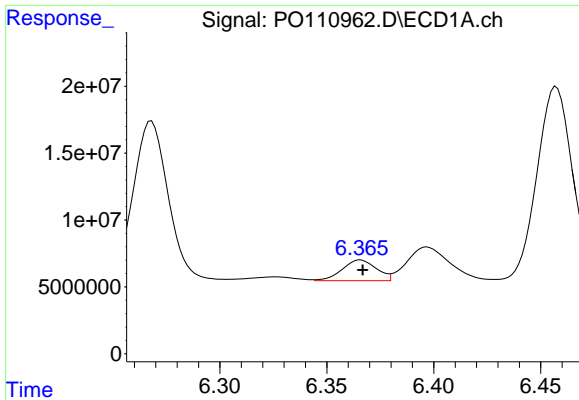
#28 AR-1254-3

R.T.: 6.152 min  
 Delta R.T.: 0.016 min  
 Response: 107627254  
 Conc: 235.35 ng/ml



#28 AR-1254-3

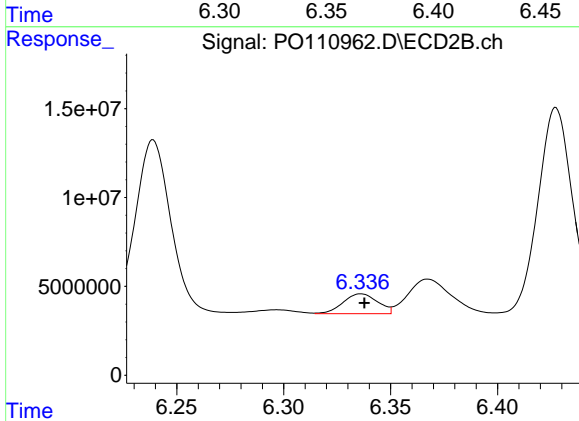
R.T.: 6.125 min  
 Delta R.T.: 0.015 min  
 Response: 86425713  
 Conc: 258.60 ng/ml



#29 AR-1254-4

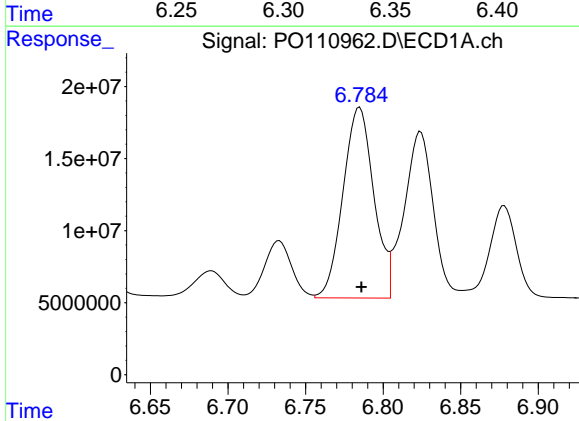
R.T.: 6.366 min  
 Delta R.T.: -0.001 min  
 Response: 17147789  
 Conc: 56.25 ng/ml

Instrument :  
 ECD\_O  
 ClientSampleId :  
 AR1660CCC500



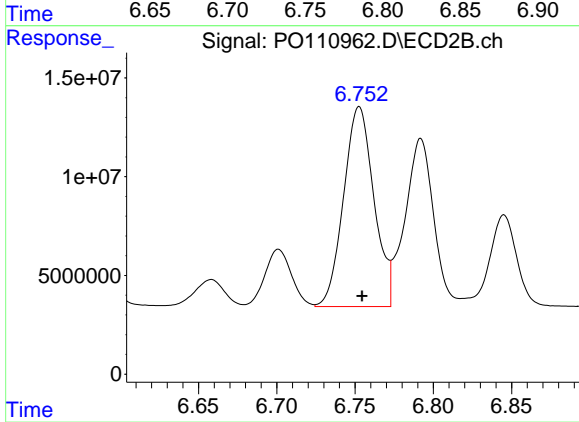
#29 AR-1254-4

R.T.: 6.336 min  
 Delta R.T.: -0.001 min  
 Response: 12525818  
 Conc: 64.51 ng/ml



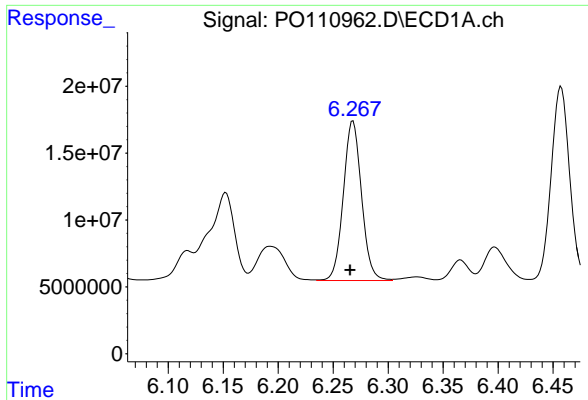
#30 AR-1254-5

R.T.: 6.785 min  
 Delta R.T.: -0.001 min  
 Response: 182891443  
 Conc: 433.51 ng/ml



#30 AR-1254-5

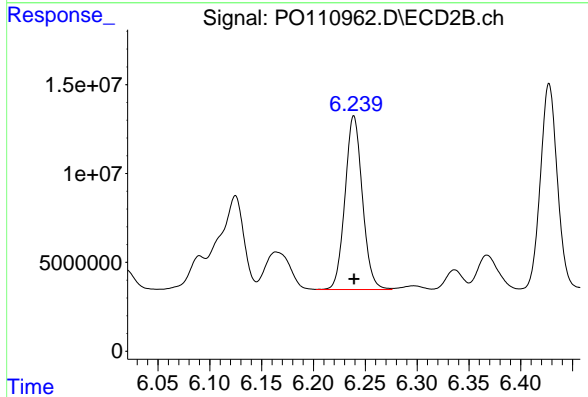
R.T.: 6.753 min  
 Delta R.T.: -0.002 min  
 Response: 136595764  
 Conc: 509.15 ng/ml



#31 AR-1260-1

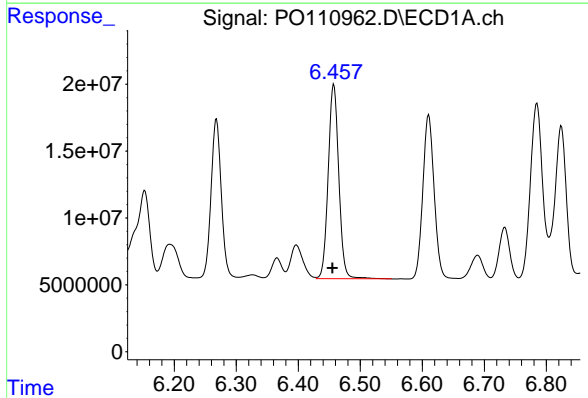
R.T.: 6.268 min  
 Delta R.T.: 0.003 min  
 Response: 137556372  
 Conc: 413.55 ng/ml

Instrument :  
 ECD\_O  
 ClientSampleId :  
 AR1660CCC500



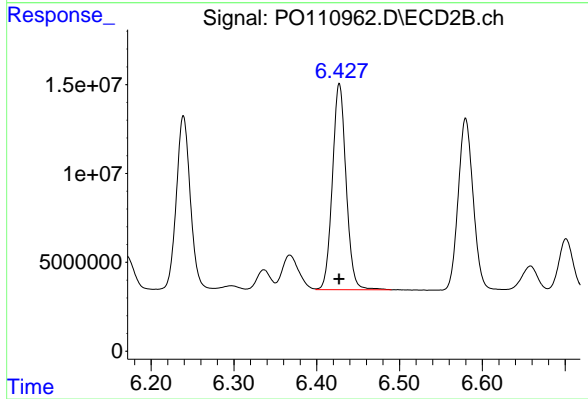
#31 AR-1260-1

R.T.: 6.239 min  
 Delta R.T.: 0.000 min  
 Response: 114104958  
 Conc: 516.85 ng/ml



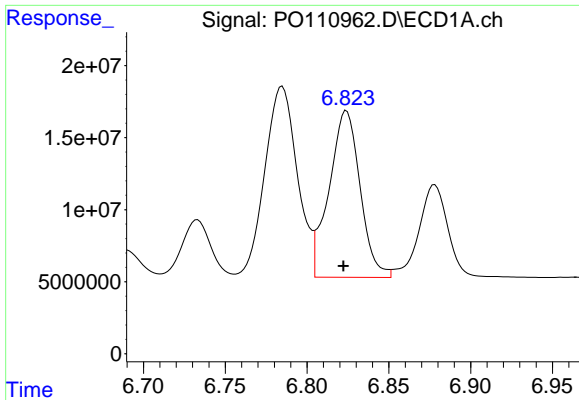
#32 AR-1260-2

R.T.: 6.457 min  
 Delta R.T.: 0.002 min  
 Response: 172621882  
 Conc: 416.14 ng/ml



#32 AR-1260-2

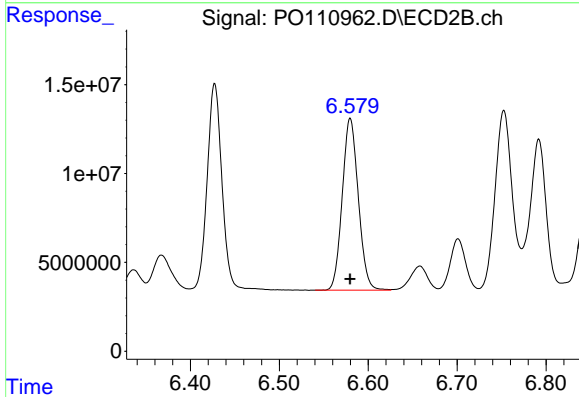
R.T.: 6.427 min  
 Delta R.T.: 0.000 min  
 Response: 133232275  
 Conc: 517.95 ng/ml



#33 AR-1260-3

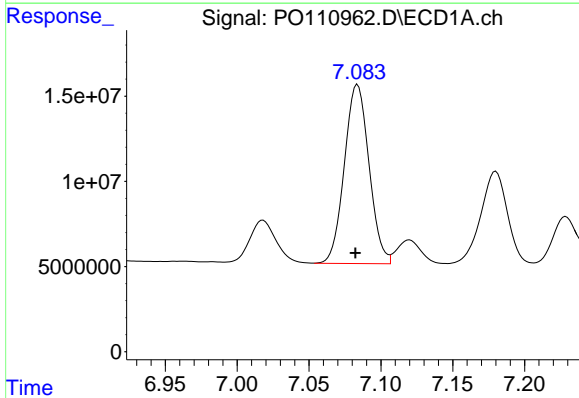
R.T.: 6.824 min  
 Delta R.T.: 0.002 min  
 Response: 152337829  
 Conc: 432.45 ng/ml

Instrument :  
 ECD\_O  
 ClientSampleId :  
 AR1660CCC500



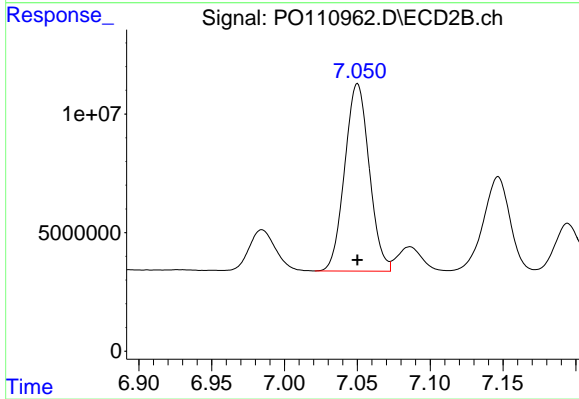
#33 AR-1260-3

R.T.: 6.580 min  
 Delta R.T.: 0.000 min  
 Response: 121353004  
 Conc: 520.51 ng/ml



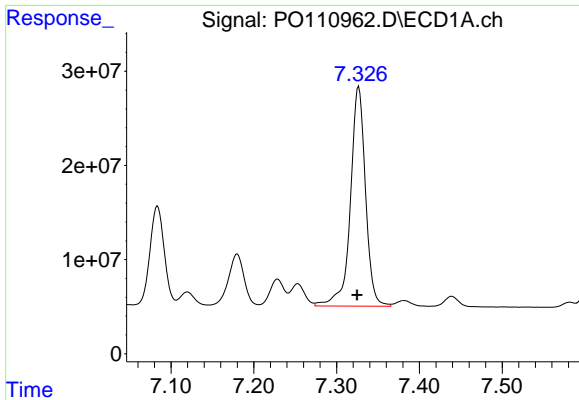
#34 AR-1260-4

R.T.: 7.084 min  
 Delta R.T.: 0.001 min  
 Response: 125285620  
 Conc: 411.80 ng/ml



#34 AR-1260-4

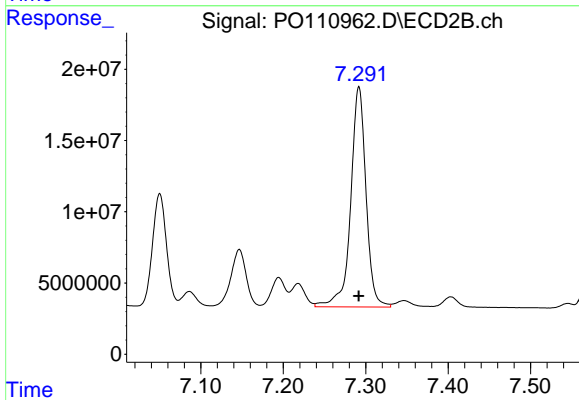
R.T.: 7.050 min  
 Delta R.T.: 0.000 min  
 Response: 92664249  
 Conc: 508.88 ng/ml



#35 AR-1260-5

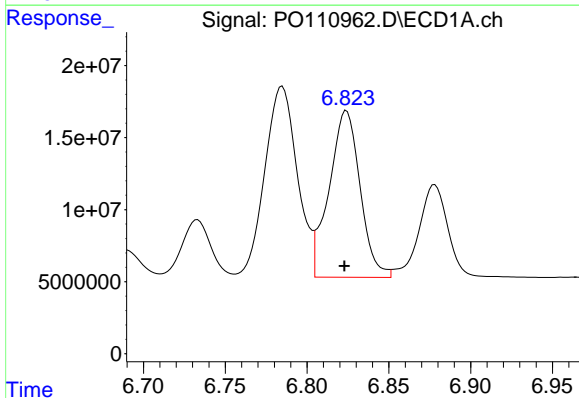
R.T.: 7.327 min  
 Delta R.T.: 0.002 min  
 Response: 295877981  
 Conc: 402.89 ng/ml

Instrument :  
 ECD\_O  
 ClientSampleId :  
 AR1660CCC500



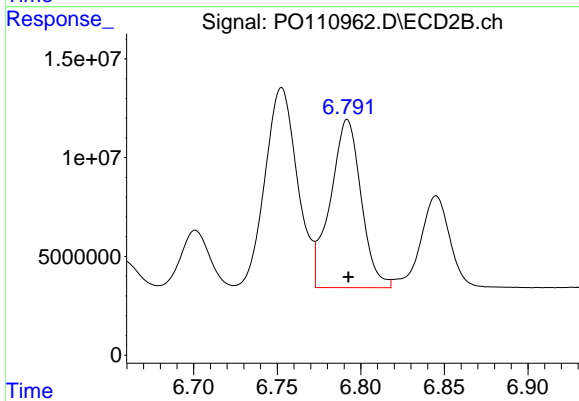
#35 AR-1260-5

R.T.: 7.292 min  
 Delta R.T.: 0.000 min  
 Response: 200108620  
 Conc: 508.93 ng/ml



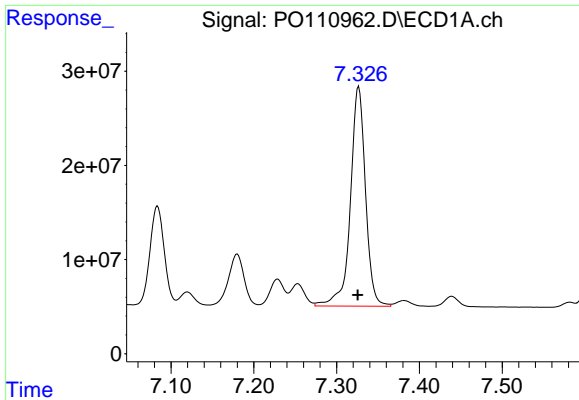
#36 AR-1262-1

R.T.: 6.824 min  
 Delta R.T.: 0.001 min  
 Response: 152337829  
 Conc: 330.87 ng/ml



#36 AR-1262-1

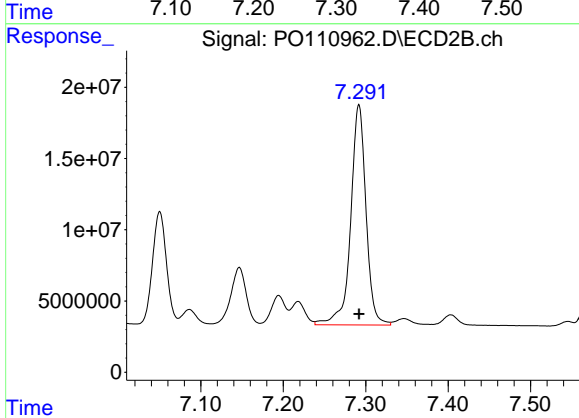
R.T.: 6.792 min  
 Delta R.T.: 0.000 min  
 Response: 108946372  
 Conc: 385.78 ng/ml



#37 AR-1262-2

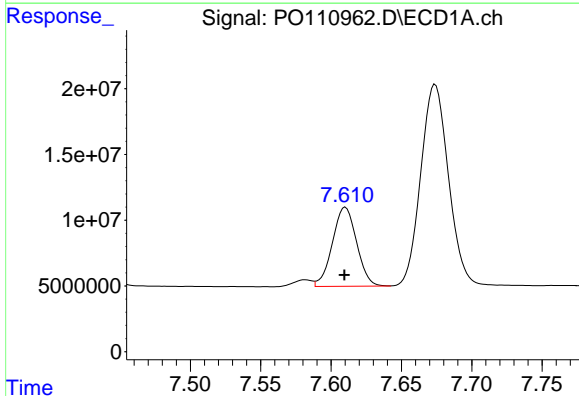
R.T.: 7.327 min  
Delta R.T.: 0.001 min  
Response: 295877981  
Conc: 376.20 ng/ml

Instrument :  
ECD\_O  
ClientSampleId :  
AR1660CCC500



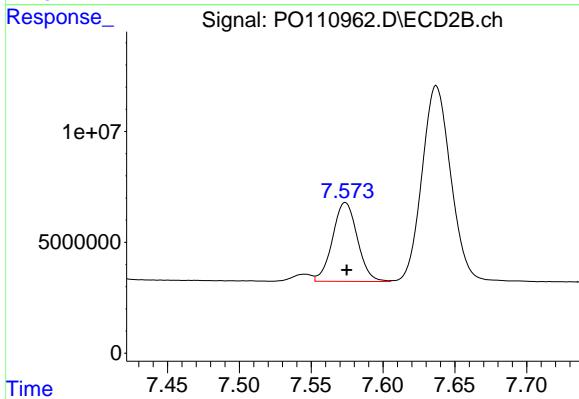
#37 AR-1262-2

R.T.: 7.292 min  
Delta R.T.: 0.000 min  
Response: 200108620  
Conc: 455.51 ng/ml



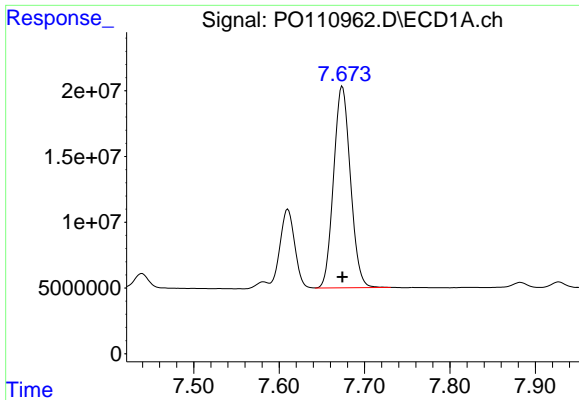
#38 AR-1262-3

R.T.: 7.610 min  
Delta R.T.: 0.000 min  
Response: 72065349  
Conc: 215.71 ng/ml



#38 AR-1262-3

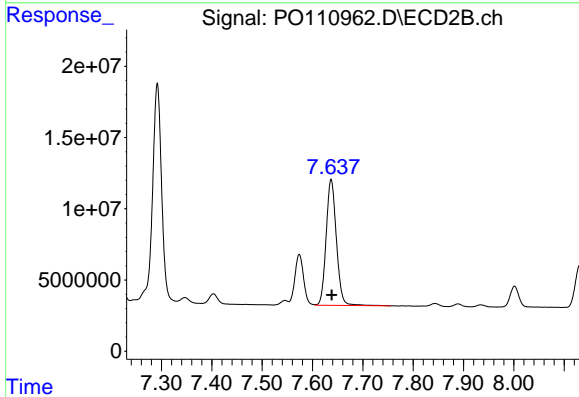
R.T.: 7.574 min  
Delta R.T.: -0.001 min  
Response: 42747222  
Conc: 263.28 ng/ml



#39 AR-1262-4

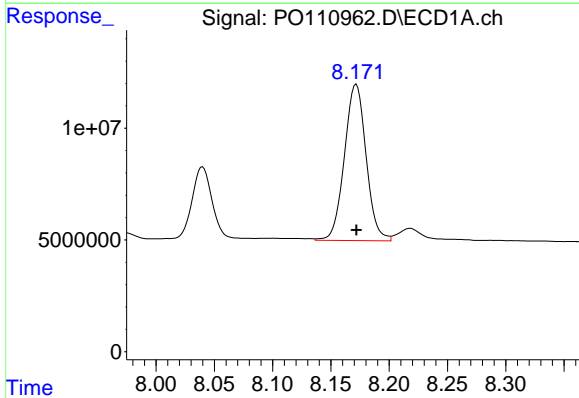
R.T.: 7.674 min  
 Delta R.T.: 0.000 min  
 Response: 209771812  
 Conc: 362.61 ng/ml

Instrument :  
 ECD\_O  
 ClientSampleId :  
 AR1660CCC500



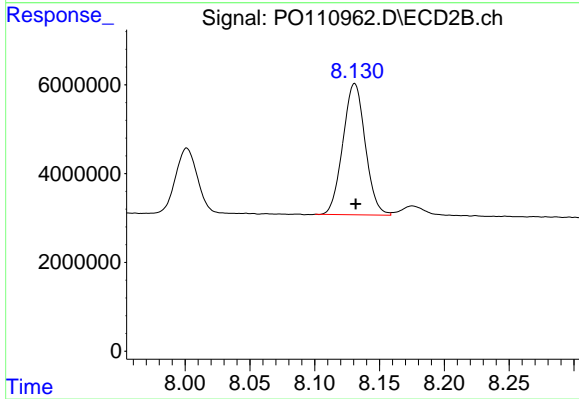
#39 AR-1262-4

R.T.: 7.637 min  
 Delta R.T.: -0.001 min  
 Response: 124968474  
 Conc: 429.25 ng/ml



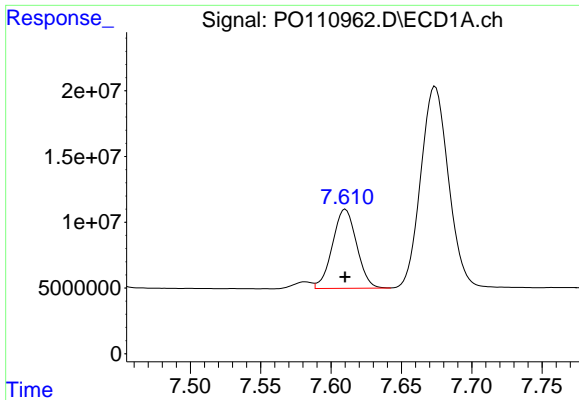
#40 AR-1262-5

R.T.: 8.172 min  
 Delta R.T.: 0.000 min  
 Response: 90756011  
 Conc: 340.17 ng/ml



#40 AR-1262-5

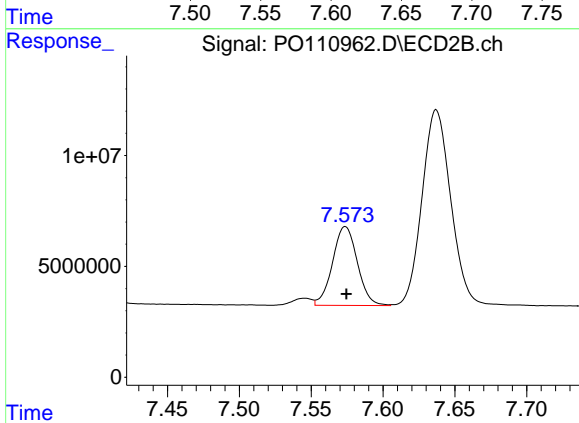
R.T.: 8.131 min  
 Delta R.T.: 0.000 min  
 Response: 35504839  
 Conc: 360.12 ng/ml



#41 AR-1268-1

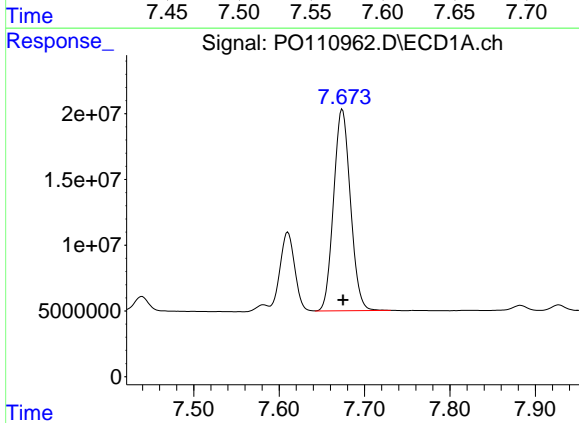
R.T.: 7.610 min  
 Delta R.T.: 0.000 min  
 Response: 72065349  
 Conc: 80.99 ng/ml

Instrument :  
 ECD\_O  
 ClientSampleId :  
 AR1660CCC500



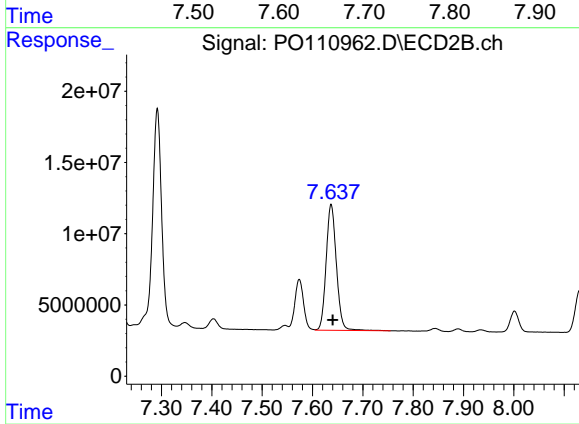
#41 AR-1268-1

R.T.: 7.574 min  
 Delta R.T.: 0.000 min  
 Response: 42747222  
 Conc: 99.19 ng/ml



#42 AR-1268-2

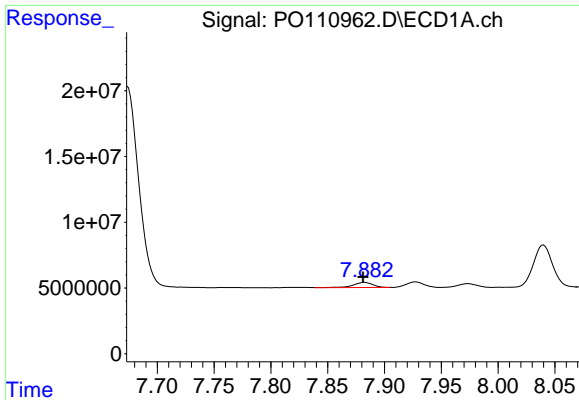
R.T.: 7.674 min  
 Delta R.T.: 0.000 min  
 Response: 209771812  
 Conc: 261.41 ng/ml



#42 AR-1268-2

R.T.: 7.637 min  
 Delta R.T.: -0.003 min  
 Response: 124968474  
 Conc: 325.55 ng/ml

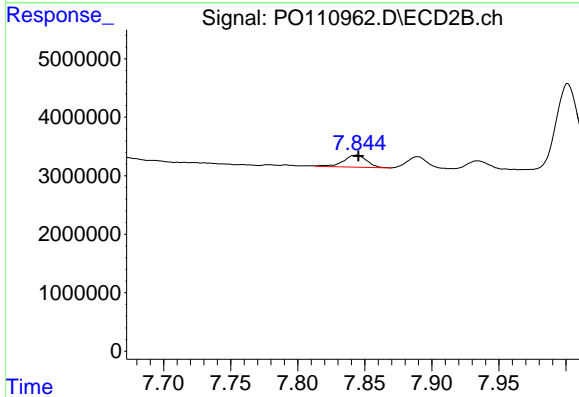




#43 AR-1268-3

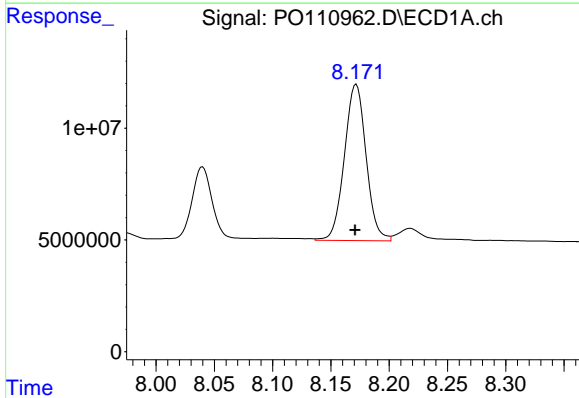
R.T.: 7.883 min  
 Delta R.T.: 0.002 min  
 Response: 4718879  
 Conc: 6.87 ng/ml

Instrument :  
 ECD\_O  
 ClientSampleId :  
 AR1660CCC500



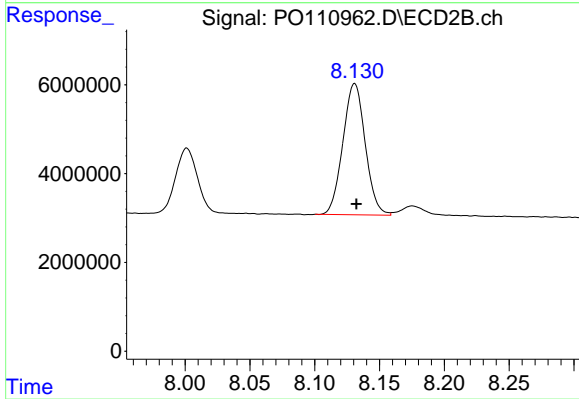
#43 AR-1268-3

R.T.: 7.844 min  
 Delta R.T.: -0.002 min  
 Response: 2476947  
 Conc: 8.72 ng/ml



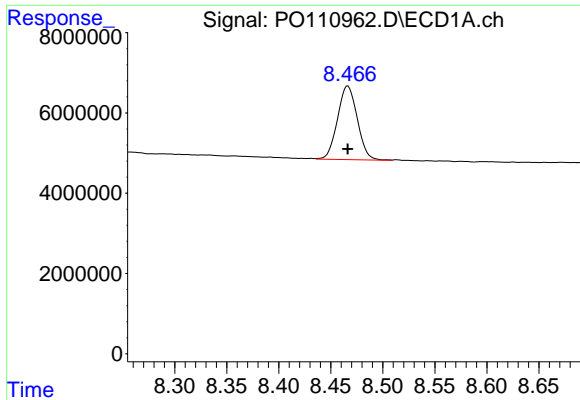
#44 AR-1268-4

R.T.: 8.172 min  
 Delta R.T.: 0.000 min  
 Response: 90756011  
 Conc: 326.46 ng/ml



#44 AR-1268-4

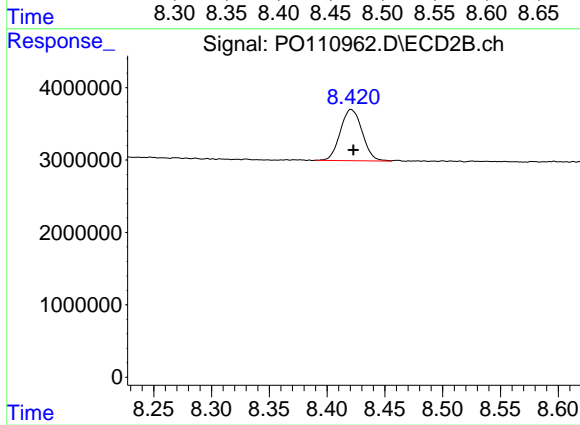
R.T.: 8.131 min  
 Delta R.T.: -0.001 min  
 Response: 35504839  
 Conc: 340.99 ng/ml



#45 AR-1268-5

R.T.: 8.466 min  
Delta R.T.: 0.000 min  
Response: 24338985  
Conc: 11.91 ng/ml

Instrument :  
ECD\_O  
ClientSampleId :  
AR1660CCC500



#45 AR-1268-5

R.T.: 8.421 min  
Delta R.T.: -0.002 min  
Response: 9285214  
Conc: 15.30 ng/ml