

Data Path : Z:\pestpcbsrv\HPCHEM1\ECD_0\Data\P0050825\
 Data File : PO110967.D
 Signal(s) : Signal #1: ECD1A.ch Signal #2: ECD2B.ch
 Acq On : 08 May 2025 21:29
 Operator : YP/AJ
 Sample : PB167901BL
 Misc :
 ALS Vial : 17 Sample Multiplier: 1

Instrument :
 ECD_0
 ClientSampleId :
 PB167901BL

Integration File signal 1: autoint1.e
 Integration File signal 2: autoint2.e
 Quant Time: May 09 01:50:53 2025
 Quant Method : Z:\pestpcbsrv\HPCHEM1\ECD_0\methods\P0050225.M
 Quant Title : GC EXTRACTABLES
 QLast Update : Fri May 02 23:47:49 2025
 Response via : Initial Calibration
 Integrator: ChemStation

Volume Inj. : 2 µl
 Signal #1 Phase : ZB-MR1 Signal #2 Phase: ZB-MR2
 Signal #1 Info : 30Mx0.32mmx 0.50µ Signal #2 Info : 30M x 0.32mm x 0.25µm

Compound	RT#1	RT#2	Resp#1	Resp#2	ng/ml	ng/ml

System Monitoring Compounds						
1) SA Tetrachlo...	3.685	3.680	103.8E6	92869068	18.150	19.176
2) SA Decachlor...	8.727	8.675	93484152	33229954	15.319	19.695 #
Target Compounds						
3) L1 AR-1016-1	4.781	4.765	491590	442966	2.224	2.788 #
4) L1 AR-1016-2	4.781	4.765	491590	442966	1.585	1.938
5) L1 AR-1016-3	4.852	4.948	251577	390809	1.100	3.205 #
6) L1 AR-1016-4	4.969	5.007	373118	476661	2.232	4.731 #
7) L1 AR-1016-5	5.222	5.196	752787	1347176	4.227	10.252 #
8) L2 AR-1221-1	3.892	3.894	42280	36104	0.486	0.542
9) L2 AR-1221-2	3.987	3.978	1688001	1449013	24.929	28.228
10) L2 AR-1221-3	4.037	4.053	237223	98065	1.199	0.641 #
11) L3 AR-1232-1	4.037	4.053	237223	98065	1.545	0.835 #
12) L3 AR-1232-2	4.573	4.765	44824	442966	0.544	3.851 #
13) L3 AR-1232-3	4.781	4.948	491590	390809	3.090	6.483 #
14) L3 AR-1232-4	4.969	5.043	373118	270364	4.433	4.853
15) L3 AR-1232-5	5.025	5.196	344220	1347176	5.847	22.886 #
16) L4 AR-1242-1	4.781	4.765	491590	442966	2.673	3.348 #
17) L4 AR-1242-2	4.781	4.765	491590	442966	1.908	2.330
18) L4 AR-1242-3	4.852	4.948	251577	390809	1.381	3.857 #
19) L4 AR-1242-4	4.969	5.043	373118	270364	2.672	2.607
20) L4 AR-1242-5	5.638	5.544	810510	528990	5.199	4.180
21) L5 AR-1248-1	4.781	4.765	491590	442966	3.742	4.596
22) L5 AR-1248-2	5.025	5.007	344220	476661	1.964	3.528 #
23) L5 AR-1248-3	5.234	5.043	1151239	270364	5.222	1.863 #
24) L5 AR-1248-4	5.571	5.196	846876	1347176	2.584	8.042 #
25) L5 AR-1248-5	5.638	5.604	810510	950089	3.472	5.659 #
26) L6 AR-1254-1	5.571	5.544	846876	528990	2.509	2.107
27) L6 AR-1254-2	5.746	5.687	1483038	1801444	5.155	8.256 #
28) L6 AR-1254-3	6.133	6.104	820097	1246694	1.793	3.730 #
29) L6 AR-1254-4	6.353	6.342	566242	184008	1.858	0.948 #
30) L6 AR-1254-5	6.770	6.792f	792382	220140	1.878	0.821 #
31) L7 AR-1260-1	6.261	6.249	287327	385483	0.864	1.746 #
32) L7 AR-1260-2	6.431	6.402	1475635	508683	3.557	1.978 #
33) L7 AR-1260-3	6.814	6.570	572970	183463	1.627	0.787 #
34) L7 AR-1260-4	7.090	7.064	1050163	82570	3.452	0.453 #
35) L7 AR-1260-5	7.312	7.299	294272	236620	0.401	0.602 #
36) L8 AR-1262-1	6.814	6.792	572970	220140	1.244	0.780 #
37) L8 AR-1262-2	7.340	7.299	293015	236620	0.373	0.539 #
38) L8 AR-1262-3	7.617	7.577	408600	421172	1.223	2.594 #
39) L8 AR-1262-4	7.655	7.609	99943	320718	0.173	1.102 #
40) L8 AR-1262-5	8.159	8.143	411596	40454	1.543	0.410 #
41) L9 AR-1268-1	7.617	7.577	408600	421172	0.459	0.977 #

Data Path : Z:\pestpcbsrv\HPCHEM1\ECD_0\Data\P0050825\
 Data File : P0110967.D
 Signal(s) : Signal #1: ECD1A.ch Signal #2: ECD2B.ch
 Acq On : 08 May 2025 21:29
 Operator : YP/AJ
 Sample : PB167901BL
 Misc :
 ALS Vial : 17 Sample Multiplier: 1

Instrument :
 ECD_0
 ClientSampleId :
 PB167901BL

Integration File signal 1: autoint1.e
 Integration File signal 2: autoint2.e
 Quant Time: May 09 01:50:53 2025
 Quant Method : Z:\pestpcbsrv\HPCHEM1\ECD_0\methods\P0050225.M
 Quant Title : GC EXTRACTABLES
 QLast Update : Fri May 02 23:47:49 2025
 Response via : Initial Calibration
 Integrator: ChemStation

Volume Inj. : 2 µl
 Signal #1 Phase : ZB-MR1 Signal #2 Phase: ZB-MR2
 Signal #1 Info : 30Mx0.32mmx 0.50µ Signal #2 Info : 30M x 0.32mm x 0.25µm

	Compound	RT#1	RT#2	Resp#1	Resp#2	ng/ml	ng/ml
42)	L9 AR-1268-2	7.655	7.609	99943	320718	0.125	0.835 #
43)	L9 AR-1268-3	7.880	7.843	249911	210354	0.364	0.741 #
44)	L9 AR-1268-4	8.159	8.143	411596	40454	1.481	0.389 #
45)	L9 AR-1268-5	8.467	8.422	1500999	167648	0.734	0.276 #

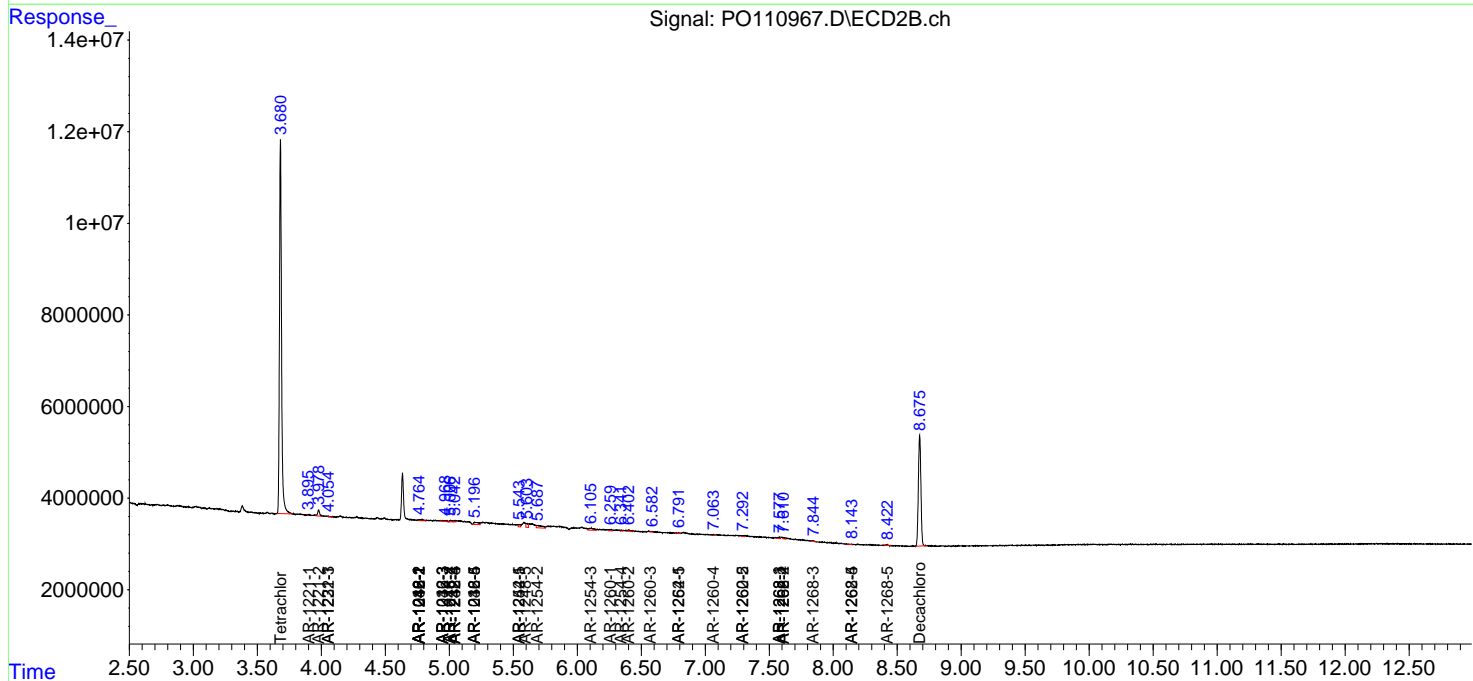
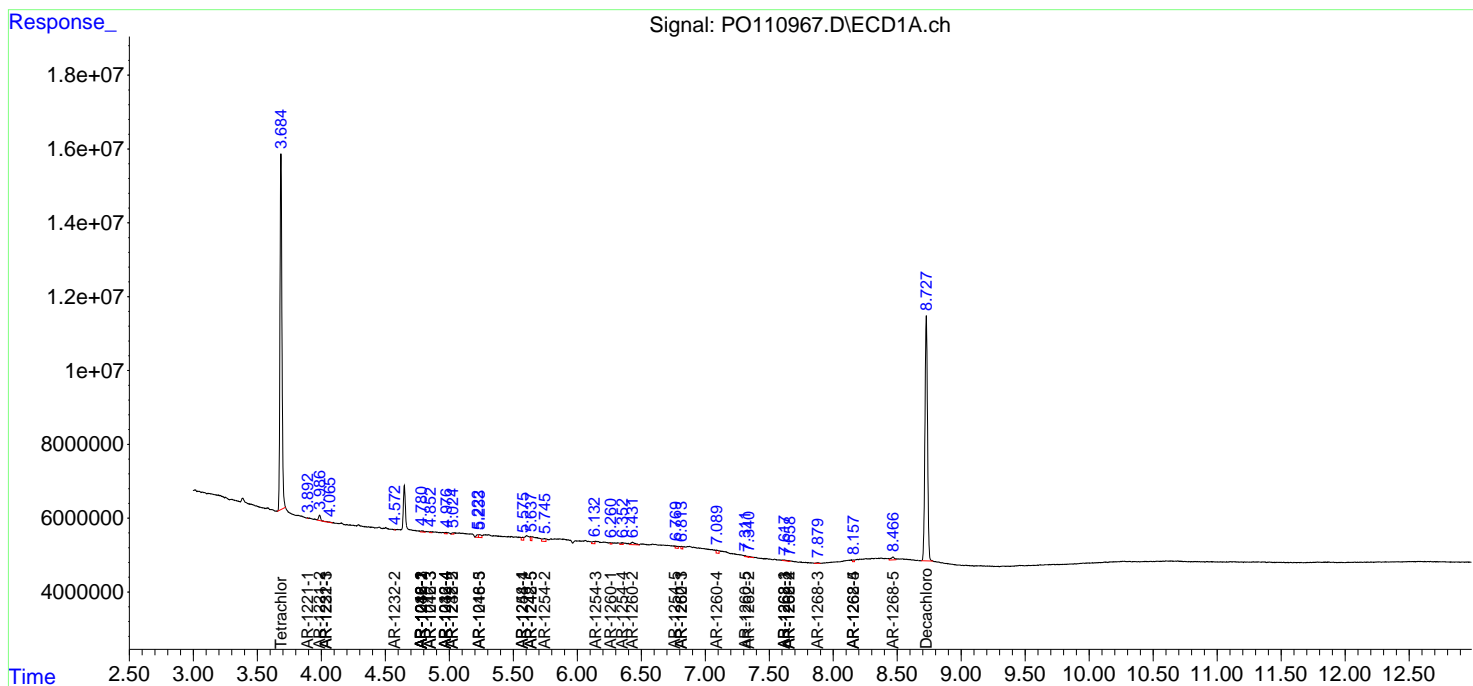
(f)=RT Delta > 1/2 Window (#)=Amounts differ by > 25% (m)=manual int.

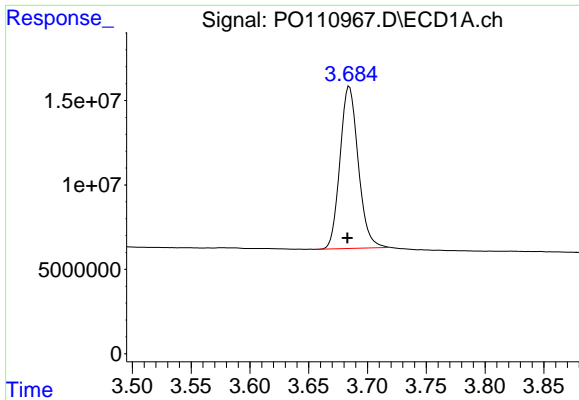
Data Path : Z:\pestpcbsrv\HPCHEM1\ECD_O\Data\P0050825\
 Data File : P0110967.D
 Signal(s) : Signal #1: ECD1A.ch Signal #2: ECD2B.ch
 Acq On : 08 May 2025 21:29
 Operator : YP/AJ
 Sample : PB167901BL
 Misc :
 ALS Vial : 17 Sample Multiplier: 1

Instrument :
 ECD_O
 ClientSampleId :
 PB167901BL

Integration File signal 1: autoint1.e
 Integration File signal 2: autoint2.e
 Quant Time: May 09 01:50:53 2025
 Quant Method : Z:\pestpcbsrv\HPCHEM1\ECD_O\methods\P0050225.M
 Quant Title : GC EXTRACTABLES
 QLast Update : Fri May 02 23:47:49 2025
 Response via : Initial Calibration
 Integrator: ChemStation

Volume Inj. : 2 µl
 Signal #1 Phase : ZB-MR1 Signal #2 Phase: ZB-MR2
 Signal #1 Info : 30Mx0.32mmx 0.50µ Signal #2 Info : 30M x 0.32mm x 0.25µm

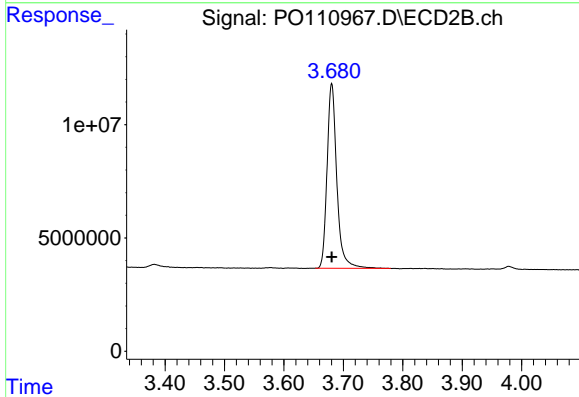




#1 Tetrachloro-m-xylene

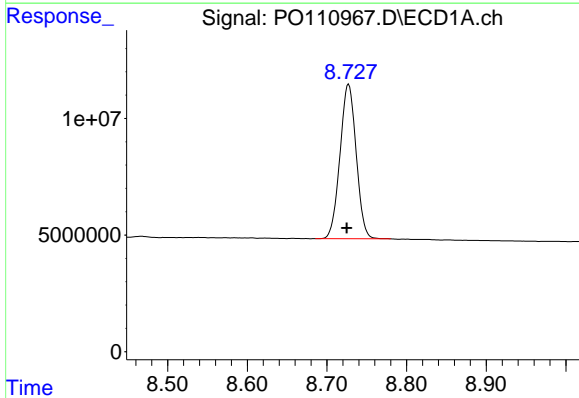
R.T.: 3.685 min
Delta R.T.: 0.002 min
Response: 103829769
Conc: 18.15 ng/ml

Instrument :
ECD_O
ClientSampleId :
PB167901BL



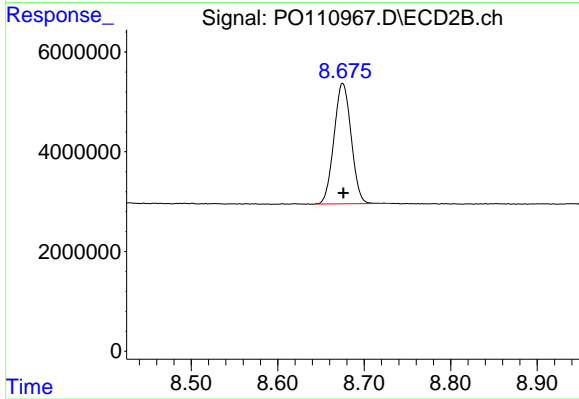
#1 Tetrachloro-m-xylene

R.T.: 3.680 min
Delta R.T.: 0.000 min
Response: 92869068
Conc: 19.18 ng/ml



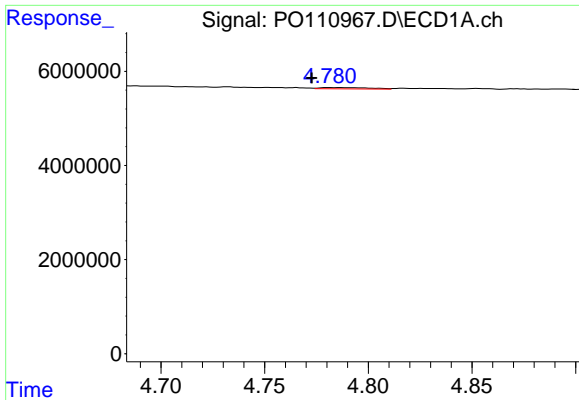
#2 Decachlorobiphenyl

R.T.: 8.727 min
Delta R.T.: 0.002 min
Response: 93484152
Conc: 15.32 ng/ml



#2 Decachlorobiphenyl

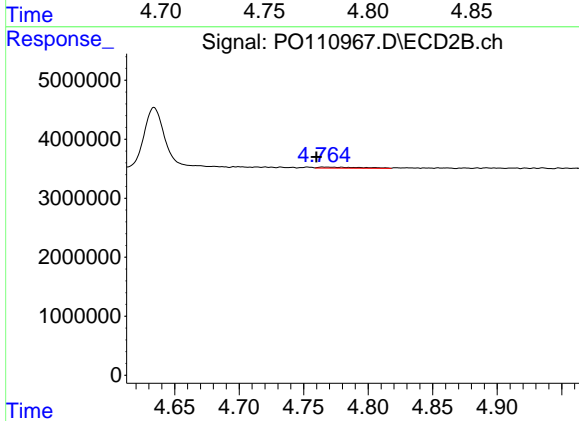
R.T.: 8.675 min
Delta R.T.: 0.000 min
Response: 33229954
Conc: 19.69 ng/ml



#3 AR-1016-1

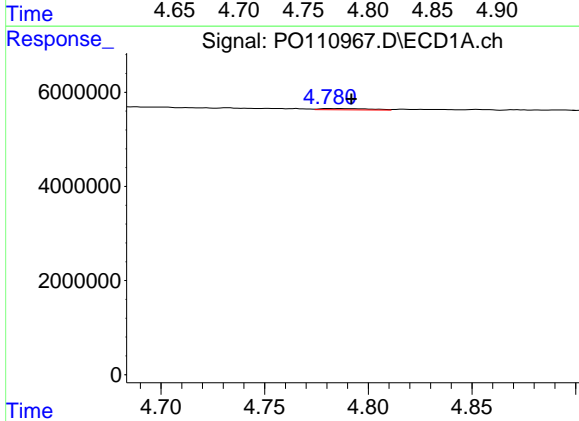
R.T.: 4.781 min
 Delta R.T.: 0.008 min
 Response: 491590
 Conc: 2.22 ng/ml

Instrument :
 ECD_O
 ClientSampleId :
 PB167901BL



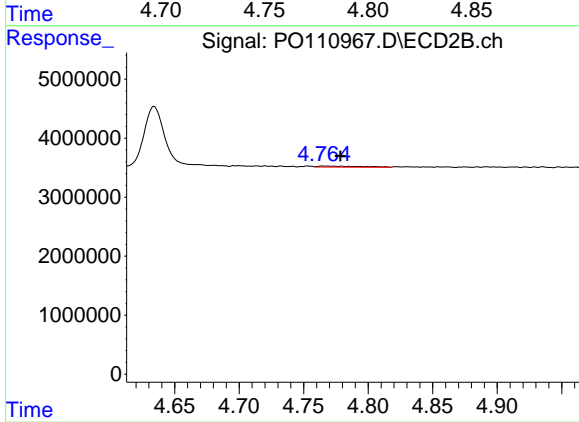
#3 AR-1016-1

R.T.: 4.765 min
 Delta R.T.: 0.005 min
 Response: 442966
 Conc: 2.79 ng/ml



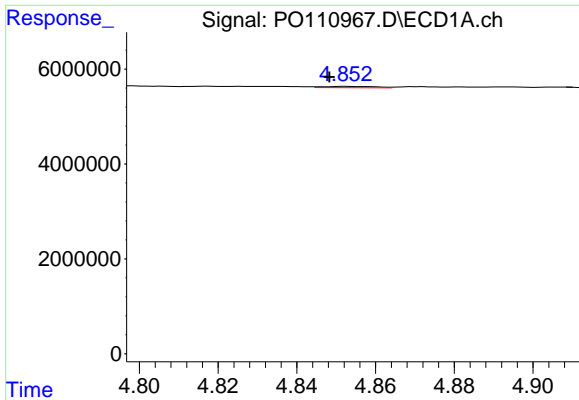
#4 AR-1016-2

R.T.: 4.781 min
 Delta R.T.: -0.011 min
 Response: 491590
 Conc: 1.58 ng/ml



#4 AR-1016-2

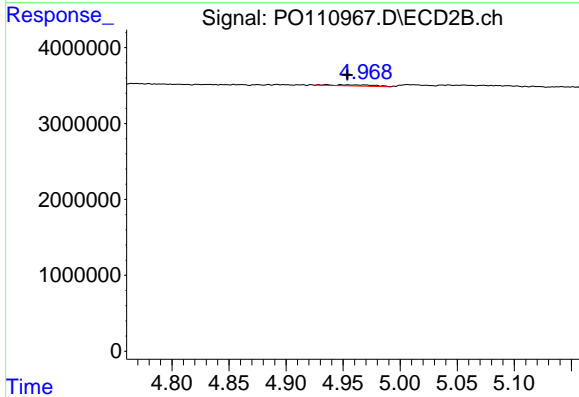
R.T.: 4.765 min
 Delta R.T.: -0.014 min
 Response: 442966
 Conc: 1.94 ng/ml



#5 AR-1016-3

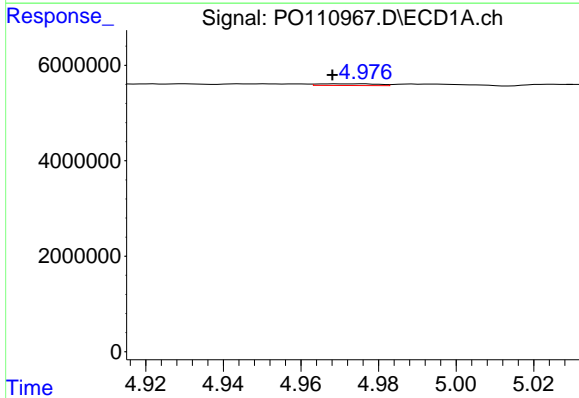
R.T.: 4.852 min
 Delta R.T.: 0.004 min
 Response: 251577
 Conc: 1.10 ng/ml

Instrument :
 ECD_O
 ClientSampleId :
 PB167901BL



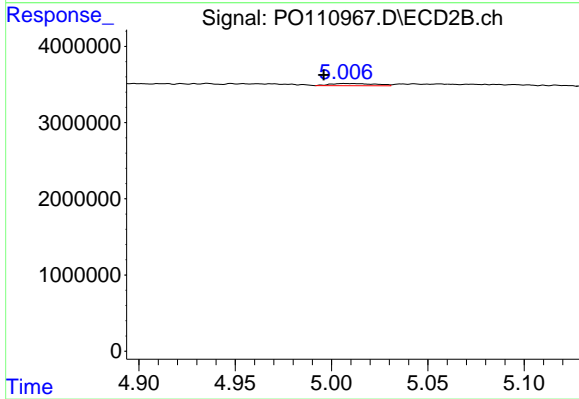
#5 AR-1016-3

R.T.: 4.948 min
 Delta R.T.: -0.006 min
 Response: 390809
 Conc: 3.21 ng/ml



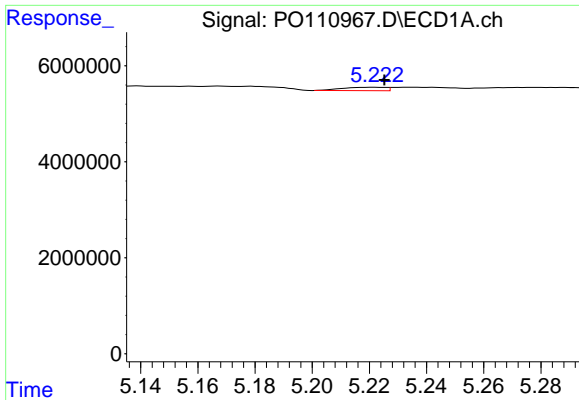
#6 AR-1016-4

R.T.: 4.969 min
 Delta R.T.: 0.000 min
 Response: 373118
 Conc: 2.23 ng/ml



#6 AR-1016-4

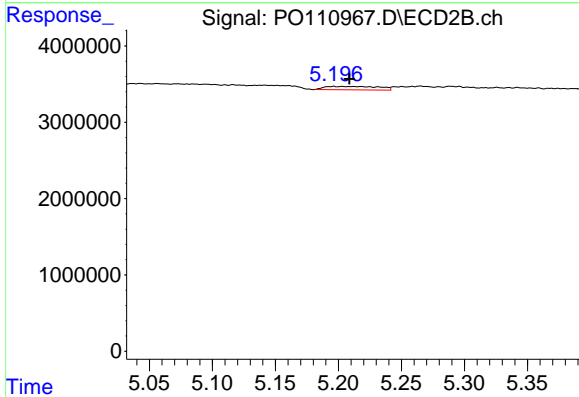
R.T.: 5.007 min
 Delta R.T.: 0.011 min
 Response: 476661
 Conc: 4.73 ng/ml



#7 AR-1016-5

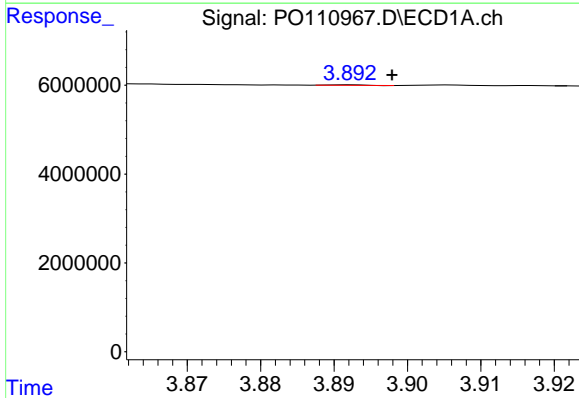
R.T.: 5.222 min
 Delta R.T.: -0.003 min
 Response: 752787
 Conc: 4.23 ng/ml

Instrument :
 ECD_O
 ClientSampleId :
 PB167901BL



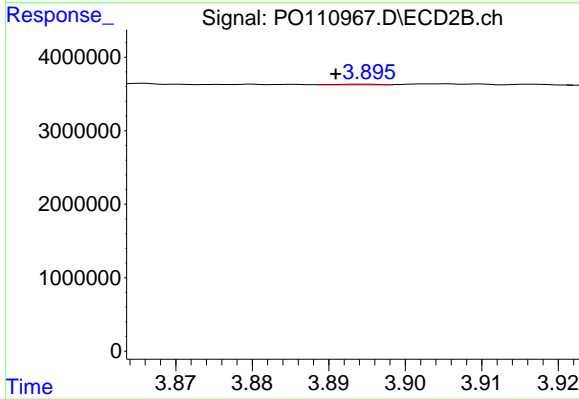
#7 AR-1016-5

R.T.: 5.196 min
 Delta R.T.: -0.012 min
 Response: 1347176
 Conc: 10.25 ng/ml



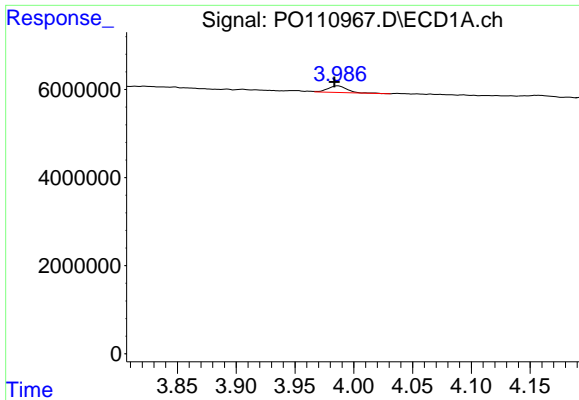
#8 AR-1221-1

R.T.: 3.892 min
 Delta R.T.: -0.006 min
 Response: 42280
 Conc: 0.49 ng/ml



#8 AR-1221-1

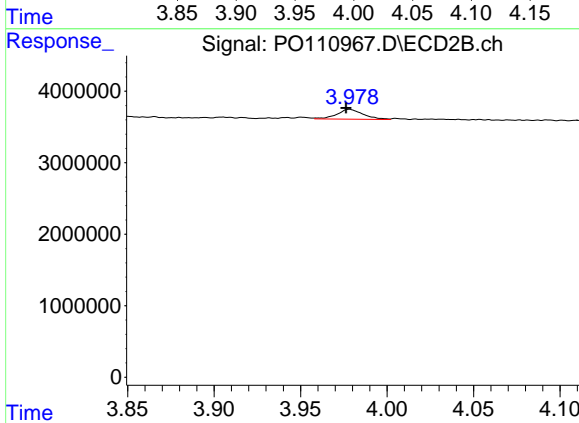
R.T.: 3.894 min
 Delta R.T.: 0.004 min
 Response: 36104
 Conc: 0.54 ng/ml



#9 AR-1221-2

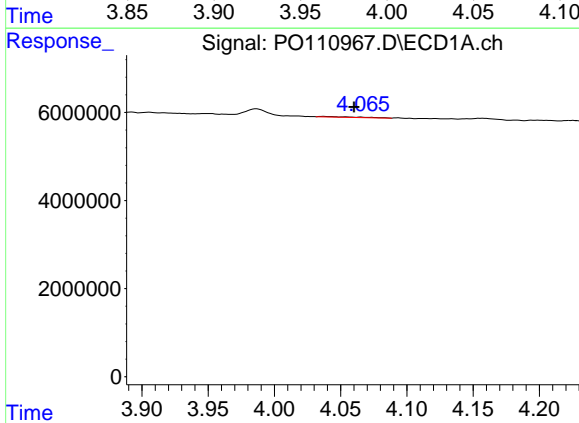
R.T.: 3.987 min
 Delta R.T.: 0.003 min
 Response: 1688001
 Conc: 24.93 ng/ml

Instrument :
 ECD_O
 ClientSampleId :
 PB167901BL



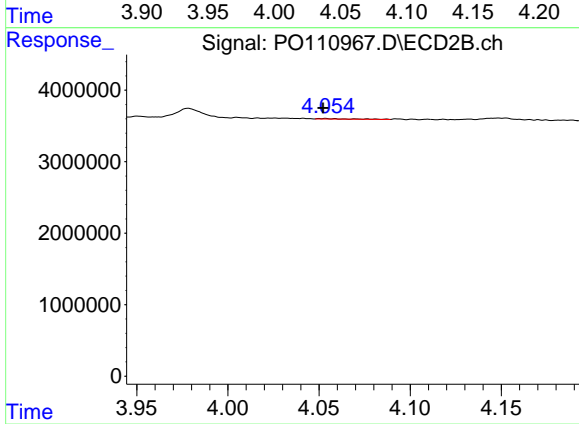
#9 AR-1221-2

R.T.: 3.978 min
 Delta R.T.: 0.002 min
 Response: 1449013
 Conc: 28.23 ng/ml



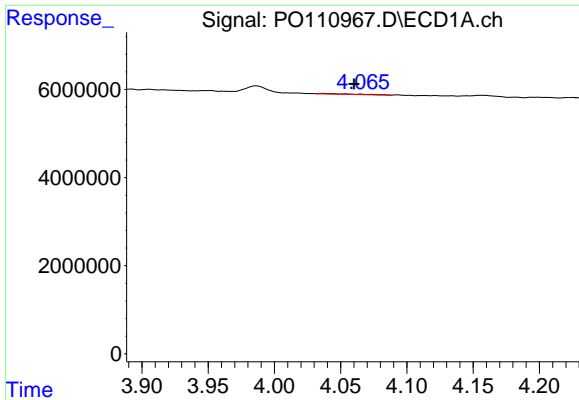
#10 AR-1221-3

R.T.: 4.037 min
 Delta R.T.: -0.023 min
 Response: 237223
 Conc: 1.20 ng/ml



#10 AR-1221-3

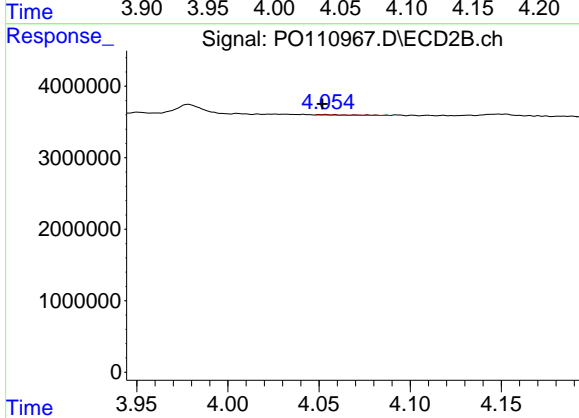
R.T.: 4.053 min
 Delta R.T.: 0.001 min
 Response: 98065
 Conc: 0.64 ng/ml



#11 AR-1232-1

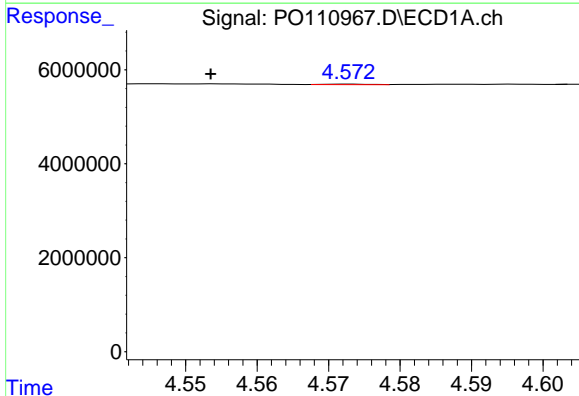
R.T.: 4.037 min
 Delta R.T.: -0.023 min
 Response: 237223
 Conc: 1.54 ng/ml

Instrument :
 ECD_O
 ClientSampleId :
 PB167901BL



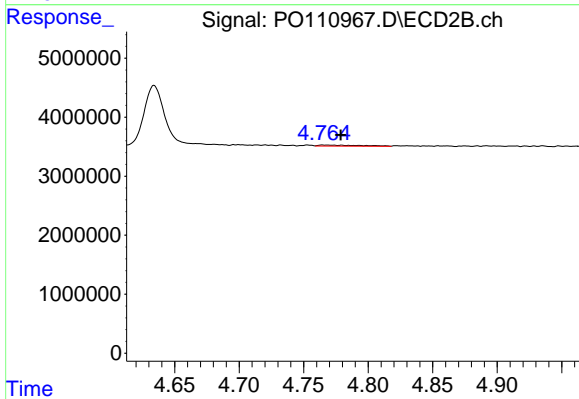
#11 AR-1232-1

R.T.: 4.053 min
 Delta R.T.: 0.002 min
 Response: 98065
 Conc: 0.83 ng/ml



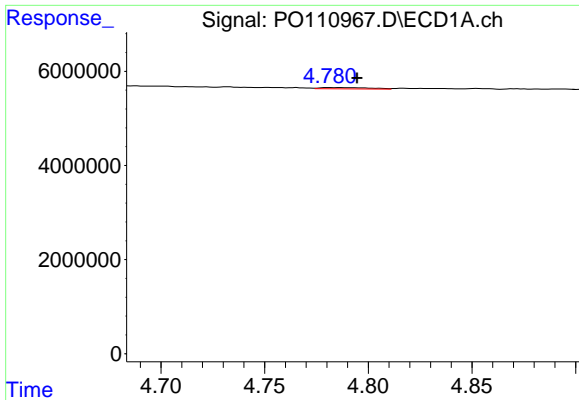
#12 AR-1232-2

R.T.: 4.573 min
 Delta R.T.: 0.019 min
 Response: 44824
 Conc: 0.54 ng/ml



#12 AR-1232-2

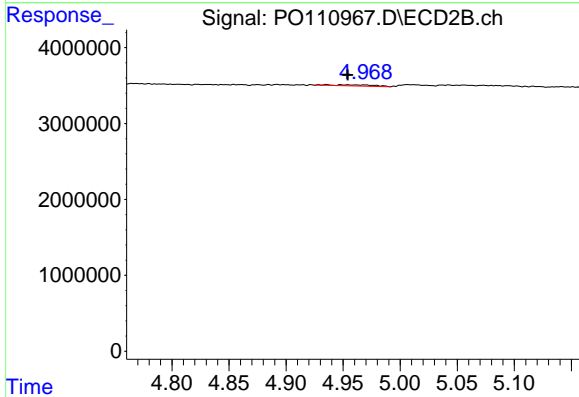
R.T.: 4.765 min
 Delta R.T.: -0.014 min
 Response: 442966
 Conc: 3.85 ng/ml



#13 AR-1232-3

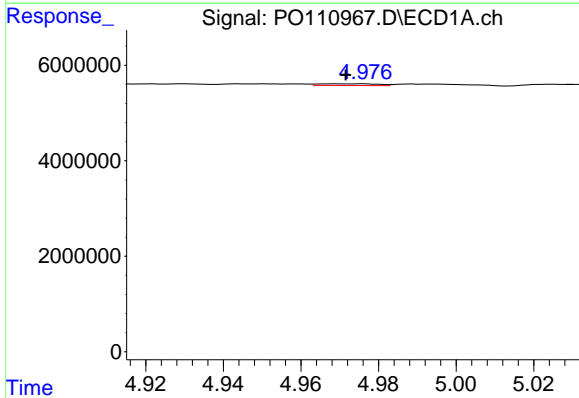
R.T.: 4.781 min
 Delta R.T.: -0.014 min
 Response: 491590
 Conc: 3.09 ng/ml

Instrument :
 ECD_O
 ClientSampleId :
 PB167901BL



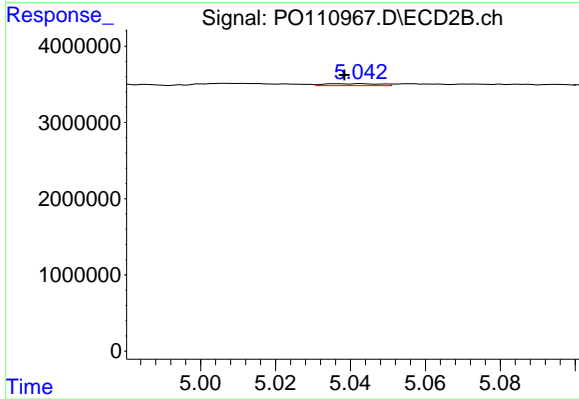
#13 AR-1232-3

R.T.: 4.948 min
 Delta R.T.: -0.006 min
 Response: 390809
 Conc: 6.48 ng/ml



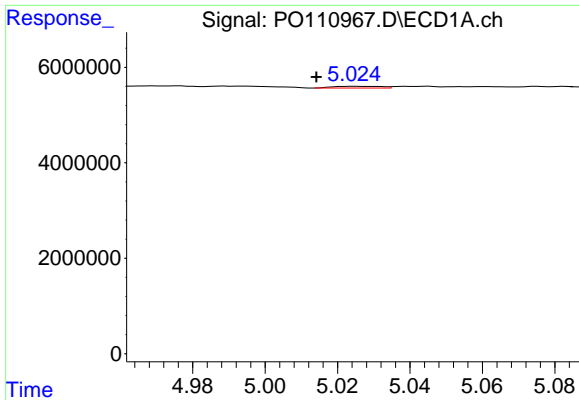
#14 AR-1232-4

R.T.: 4.969 min
 Delta R.T.: -0.003 min
 Response: 373118
 Conc: 4.43 ng/ml



#14 AR-1232-4

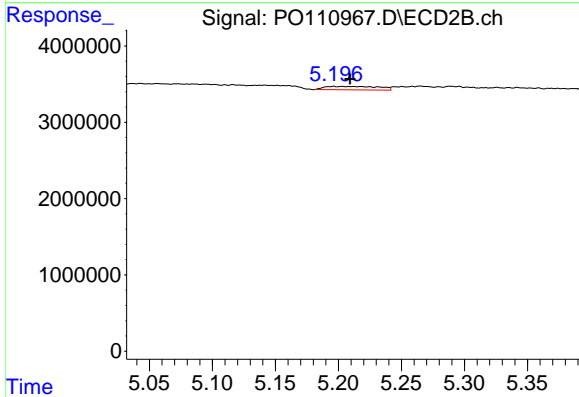
R.T.: 5.043 min
 Delta R.T.: 0.004 min
 Response: 270364
 Conc: 4.85 ng/ml



#15 AR-1232-5

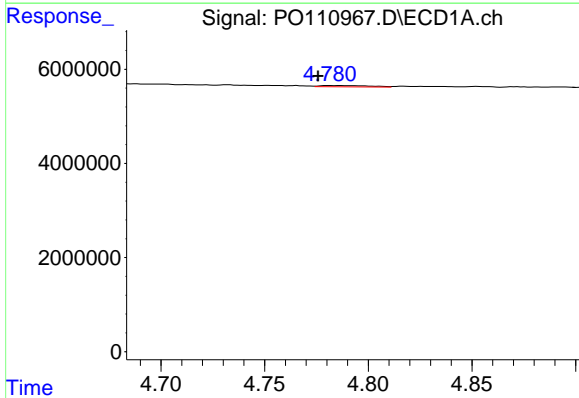
R.T.: 5.025 min
 Delta R.T.: 0.011 min
 Response: 344220
 Conc: 5.85 ng/ml

Instrument :
 ECD_O
 ClientSampleId :
 PB167901BL



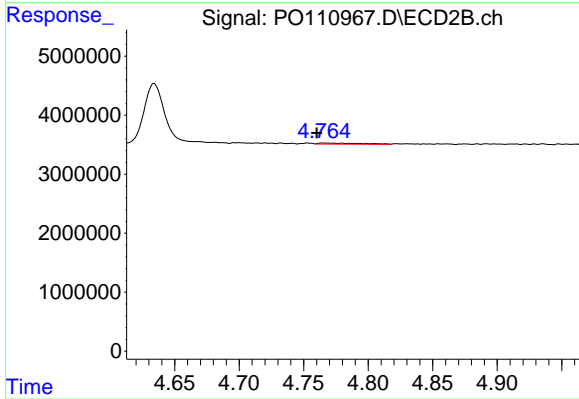
#15 AR-1232-5

R.T.: 5.196 min
 Delta R.T.: -0.013 min
 Response: 1347176
 Conc: 22.89 ng/ml



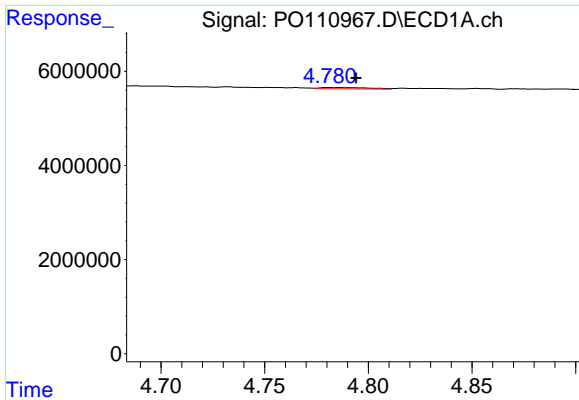
#16 AR-1242-1

R.T.: 4.781 min
 Delta R.T.: 0.005 min
 Response: 491590
 Conc: 2.67 ng/ml



#16 AR-1242-1

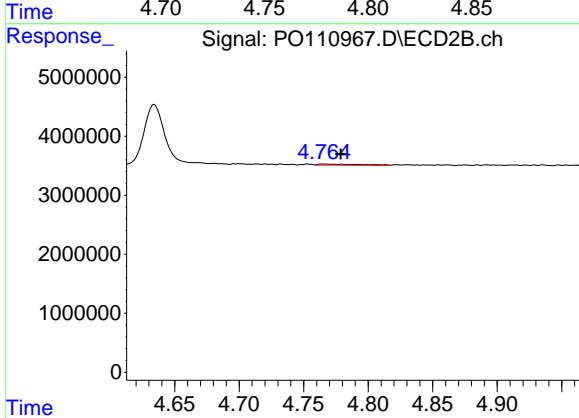
R.T.: 4.765 min
 Delta R.T.: 0.005 min
 Response: 442966
 Conc: 3.35 ng/ml



#17 AR-1242-2

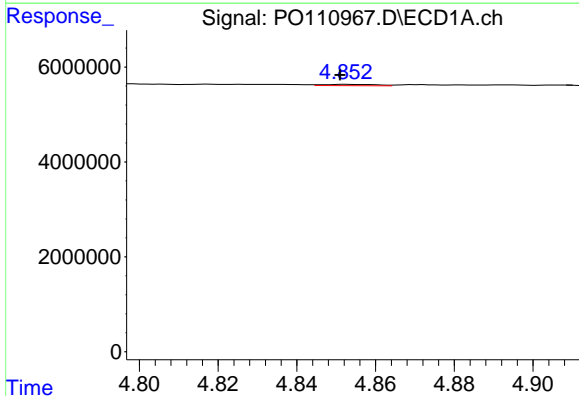
R.T.: 4.781 min
 Delta R.T.: -0.013 min
 Response: 491590
 Conc: 1.91 ng/ml

Instrument :
 ECD_O
 ClientSampleId :
 PB167901BL



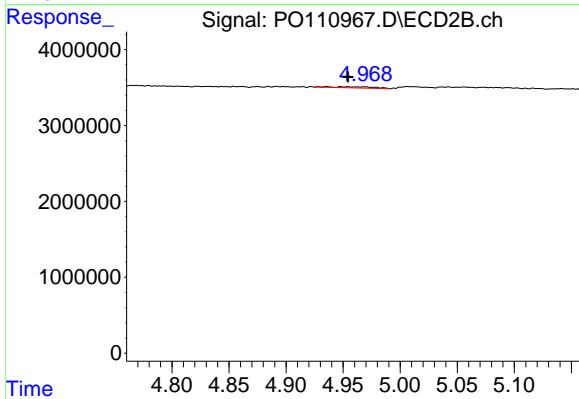
#17 AR-1242-2

R.T.: 4.765 min
 Delta R.T.: -0.014 min
 Response: 442966
 Conc: 2.33 ng/ml



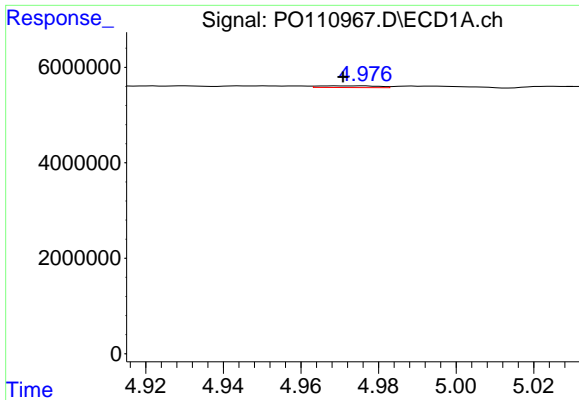
#18 AR-1242-3

R.T.: 4.852 min
 Delta R.T.: 0.001 min
 Response: 251577
 Conc: 1.38 ng/ml



#18 AR-1242-3

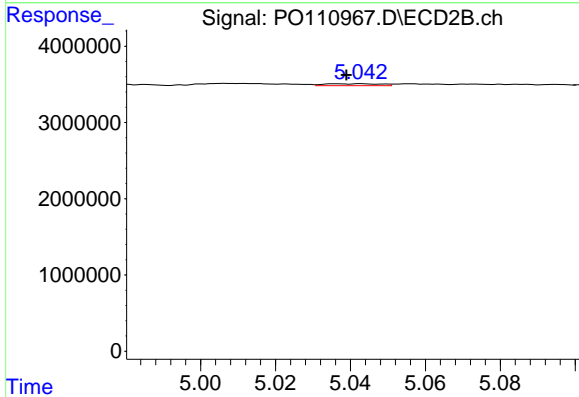
R.T.: 4.948 min
 Delta R.T.: -0.006 min
 Response: 390809
 Conc: 3.86 ng/ml



#19 AR-1242-4

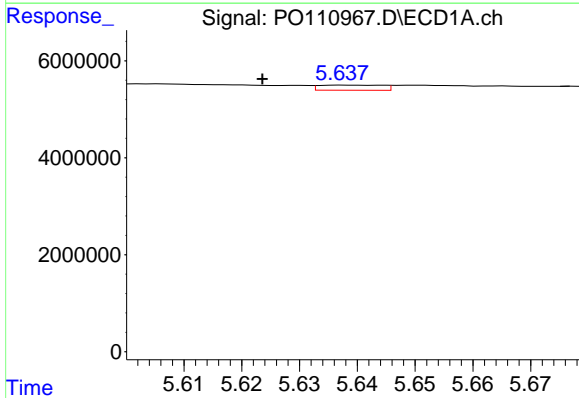
R.T.: 4.969 min
 Delta R.T.: -0.002 min
 Response: 373118
 Conc: 2.67 ng/ml

Instrument :
 ECD_O
 ClientSampleId :
 PB167901BL



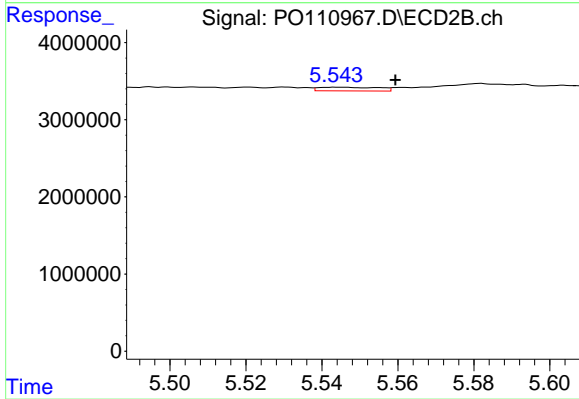
#19 AR-1242-4

R.T.: 5.043 min
 Delta R.T.: 0.004 min
 Response: 270364
 Conc: 2.61 ng/ml



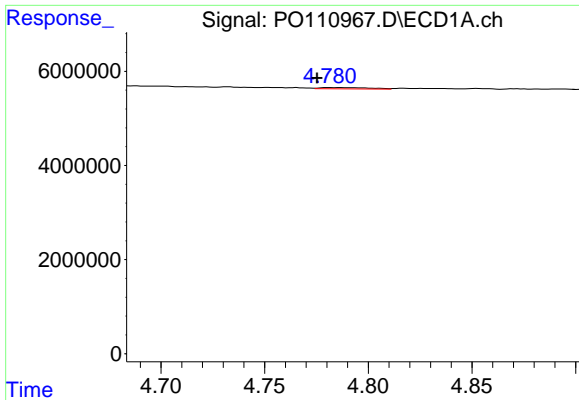
#20 AR-1242-5

R.T.: 5.638 min
 Delta R.T.: 0.014 min
 Response: 810510
 Conc: 5.20 ng/ml



#20 AR-1242-5

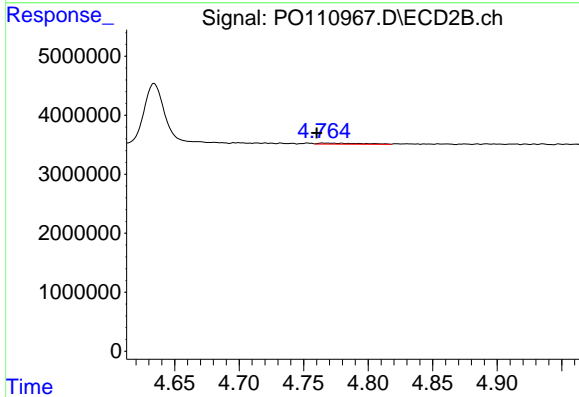
R.T.: 5.544 min
 Delta R.T.: -0.015 min
 Response: 528990
 Conc: 4.18 ng/ml



#21 AR-1248-1

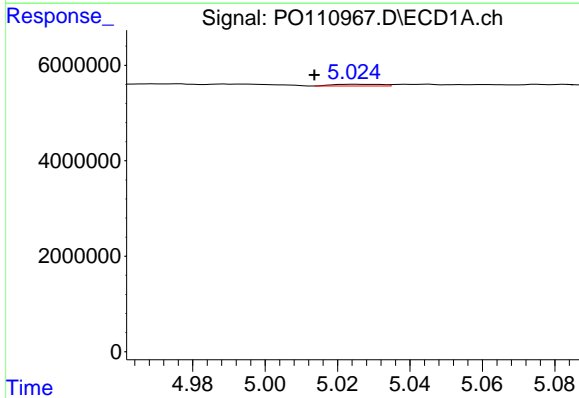
R.T.: 4.781 min
 Delta R.T.: 0.005 min
 Response: 491590
 Conc: 3.74 ng/ml

Instrument :
 ECD_O
 ClientSampleId :
 PB167901BL



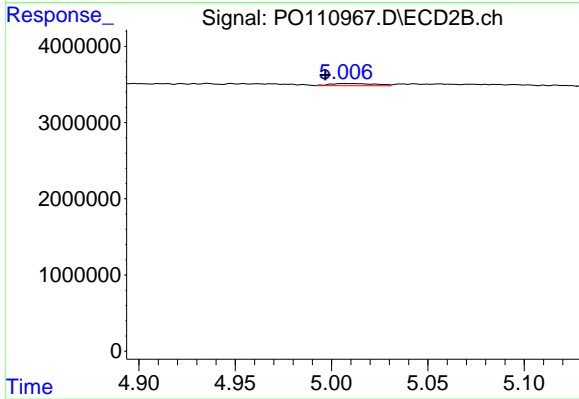
#21 AR-1248-1

R.T.: 4.765 min
 Delta R.T.: 0.005 min
 Response: 442966
 Conc: 4.60 ng/ml



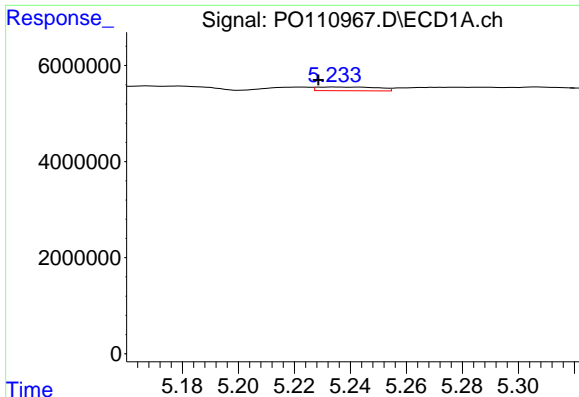
#22 AR-1248-2

R.T.: 5.025 min
 Delta R.T.: 0.012 min
 Response: 344220
 Conc: 1.96 ng/ml



#22 AR-1248-2

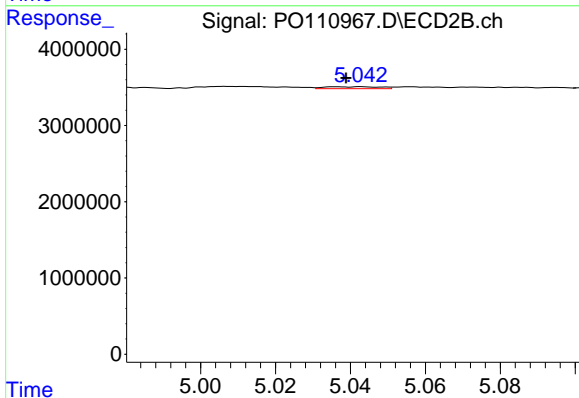
R.T.: 5.007 min
 Delta R.T.: 0.010 min
 Response: 476661
 Conc: 3.53 ng/ml



#23 AR-1248-3

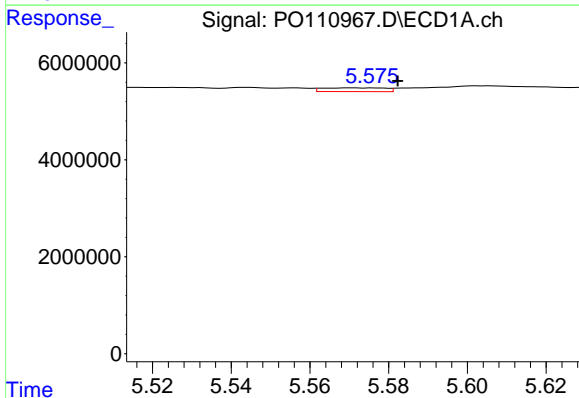
R.T.: 5.234 min
 Delta R.T.: 0.005 min
 Response: 1151239
 Conc: 5.22 ng/ml

Instrument :
 ECD_O
 ClientSampleId :
 PB167901BL



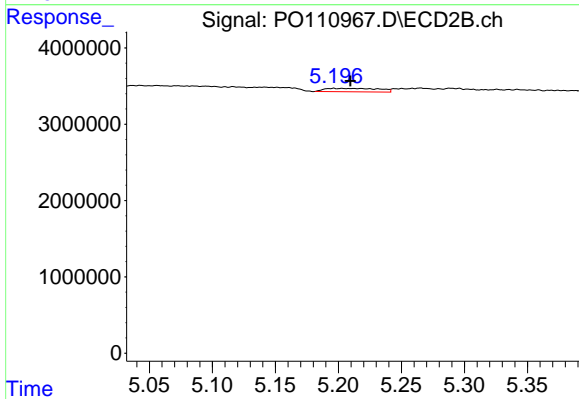
#23 AR-1248-3

R.T.: 5.043 min
 Delta R.T.: 0.004 min
 Response: 270364
 Conc: 1.86 ng/ml



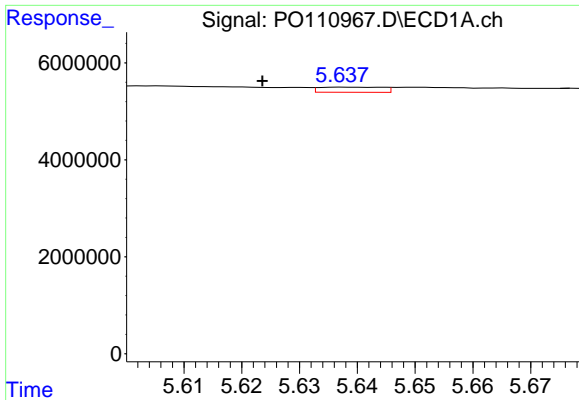
#24 AR-1248-4

R.T.: 5.571 min
 Delta R.T.: -0.012 min
 Response: 846876
 Conc: 2.58 ng/ml



#24 AR-1248-4

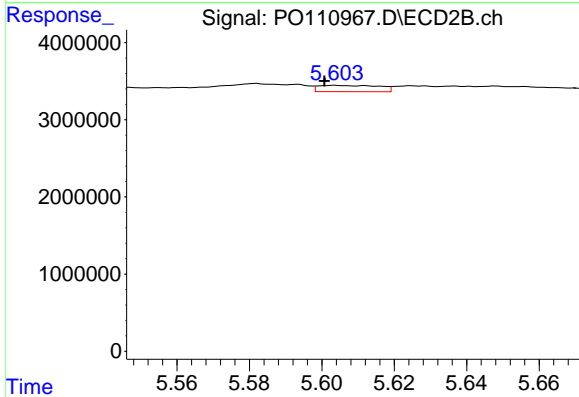
R.T.: 5.196 min
 Delta R.T.: -0.013 min
 Response: 1347176
 Conc: 8.04 ng/ml



#25 AR-1248-5

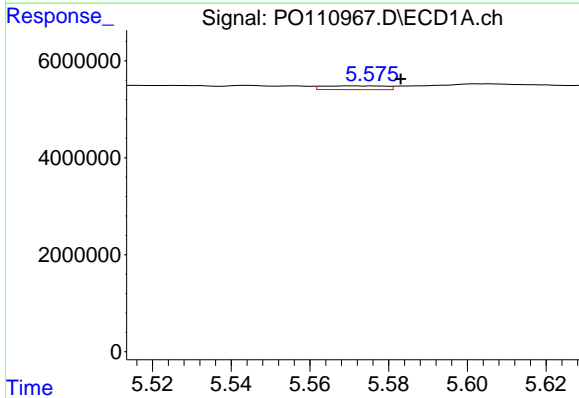
R.T.: 5.638 min
 Delta R.T.: 0.014 min
 Response: 810510
 Conc: 3.47 ng/ml

Instrument :
 ECD_O
 ClientSampleId :
 PB167901BL



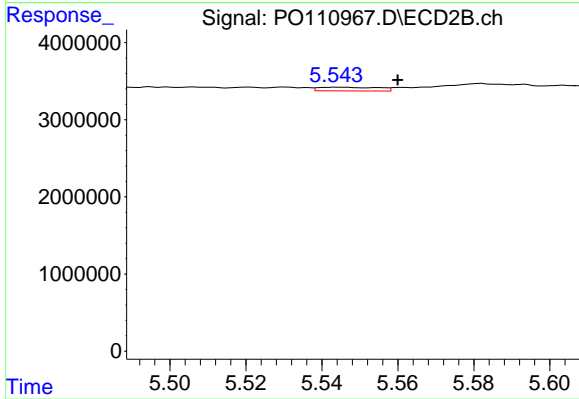
#25 AR-1248-5

R.T.: 5.604 min
 Delta R.T.: 0.003 min
 Response: 950089
 Conc: 5.66 ng/ml



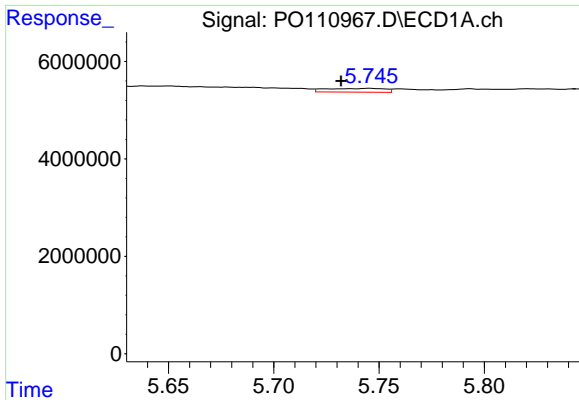
#26 AR-1254-1

R.T.: 5.571 min
 Delta R.T.: -0.012 min
 Response: 846876
 Conc: 2.51 ng/ml



#26 AR-1254-1

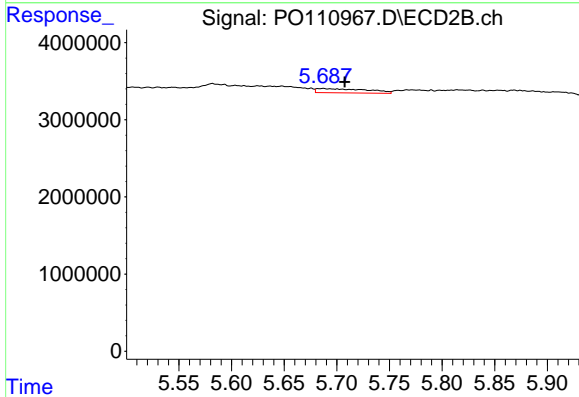
R.T.: 5.544 min
 Delta R.T.: -0.016 min
 Response: 528990
 Conc: 2.11 ng/ml



#27 AR-1254-2

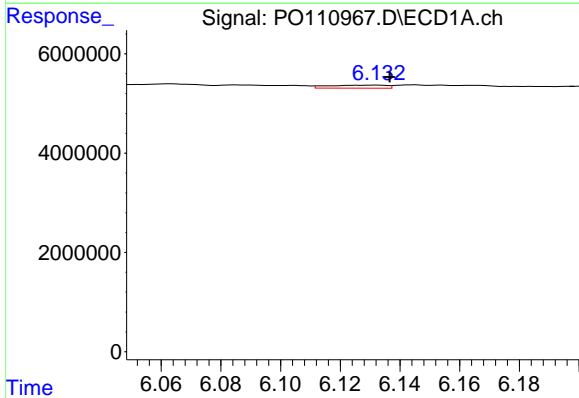
R.T.: 5.746 min
 Delta R.T.: 0.014 min
 Response: 1483038
 Conc: 5.15 ng/ml

Instrument :
 ECD_O
 ClientSampleId :
 PB167901BL



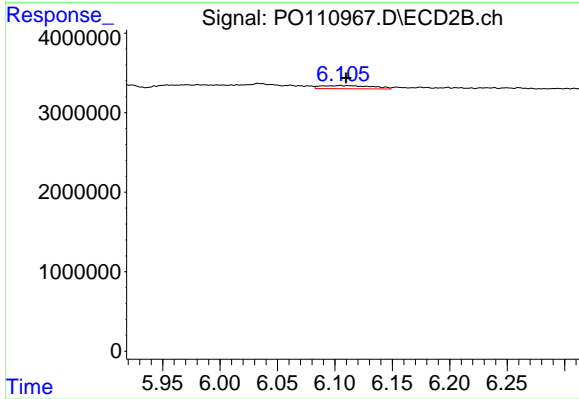
#27 AR-1254-2

R.T.: 5.687 min
 Delta R.T.: -0.021 min
 Response: 1801444
 Conc: 8.26 ng/ml



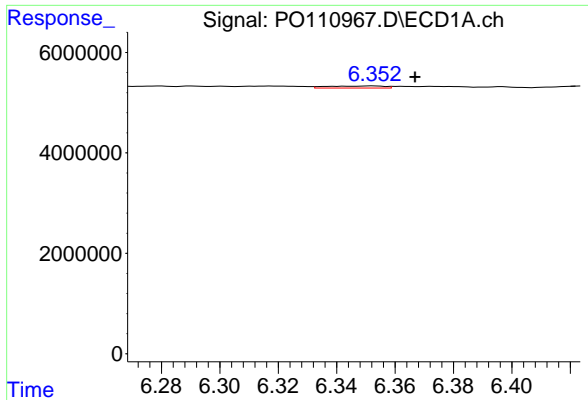
#28 AR-1254-3

R.T.: 6.133 min
 Delta R.T.: -0.004 min
 Response: 820097
 Conc: 1.79 ng/ml



#28 AR-1254-3

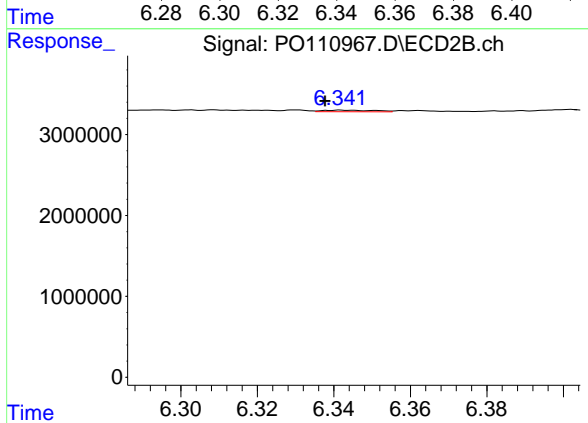
R.T.: 6.104 min
 Delta R.T.: -0.005 min
 Response: 1246694
 Conc: 3.73 ng/ml



#29 AR-1254-4

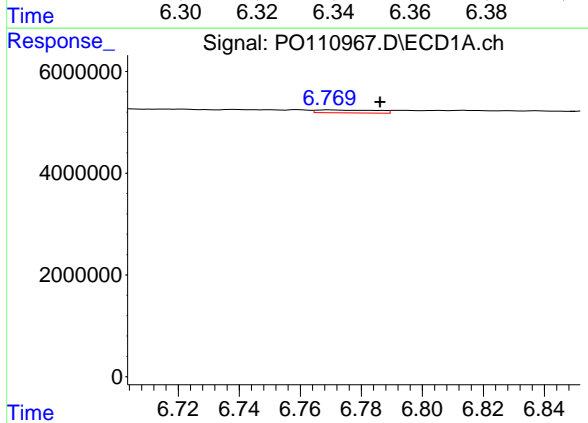
R.T.: 6.353 min
 Delta R.T.: -0.014 min
 Response: 566242
 Conc: 1.86 ng/ml

Instrument :
 ECD_O
 ClientSampleId :
 PB167901BL



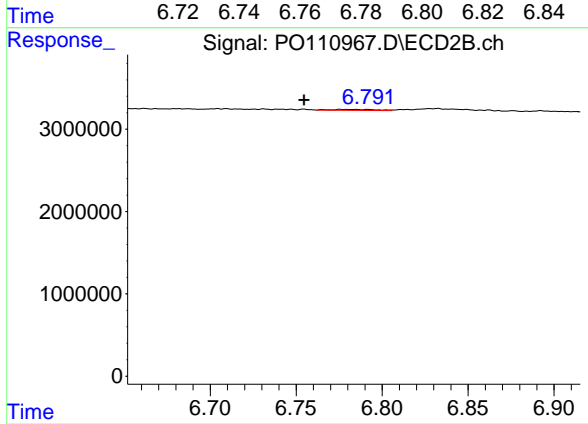
#29 AR-1254-4

R.T.: 6.342 min
 Delta R.T.: 0.005 min
 Response: 184008
 Conc: 0.95 ng/ml



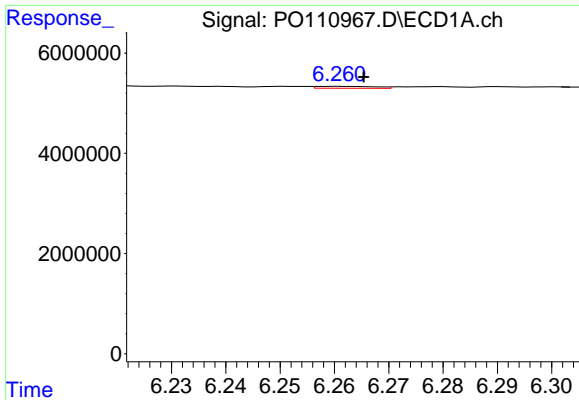
#30 AR-1254-5

R.T.: 6.770 min
 Delta R.T.: -0.017 min
 Response: 792382
 Conc: 1.88 ng/ml



#30 AR-1254-5

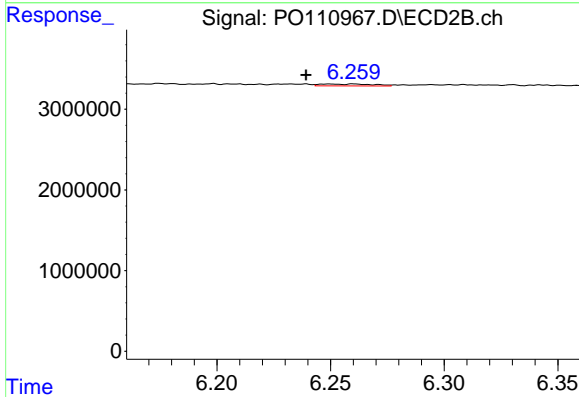
R.T.: 6.792 min
 Delta R.T.: 0.037 min
 Response: 220140
 Conc: 0.82 ng/ml



#31 AR-1260-1

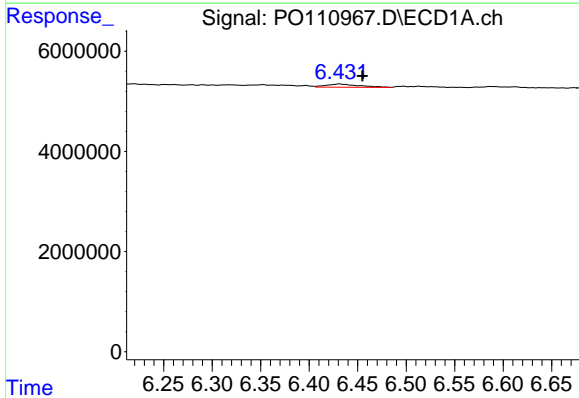
R.T.: 6.261 min
 Delta R.T.: -0.004 min
 Response: 287327
 Conc: 0.86 ng/ml

Instrument :
 ECD_O
 ClientSampleId :
 PB167901BL



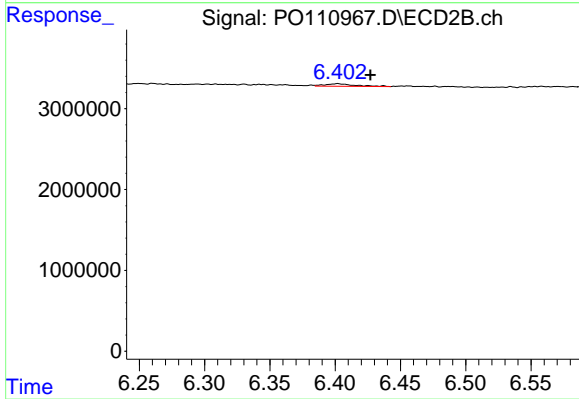
#31 AR-1260-1

R.T.: 6.249 min
 Delta R.T.: 0.010 min
 Response: 385483
 Conc: 1.75 ng/ml



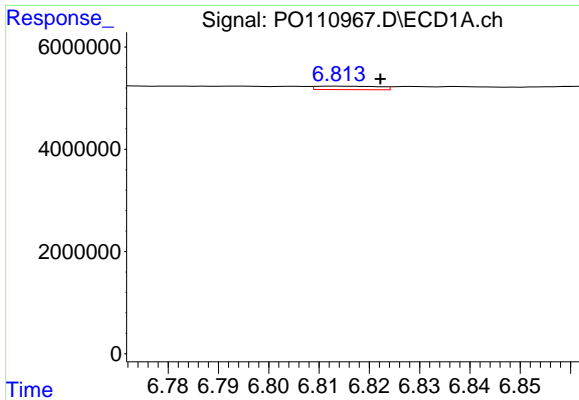
#32 AR-1260-2

R.T.: 6.431 min
 Delta R.T.: -0.024 min
 Response: 1475635
 Conc: 3.56 ng/ml



#32 AR-1260-2

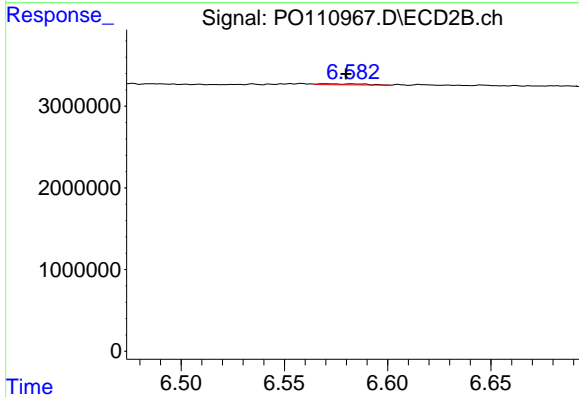
R.T.: 6.402 min
 Delta R.T.: -0.025 min
 Response: 508683
 Conc: 1.98 ng/ml



#33 AR-1260-3

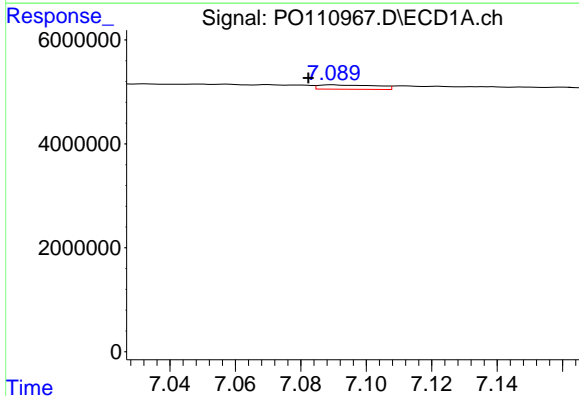
R.T.: 6.814 min
 Delta R.T.: -0.008 min
 Response: 572970
 Conc: 1.63 ng/ml

Instrument :
 ECD_O
 ClientSampleId :
 PB167901BL



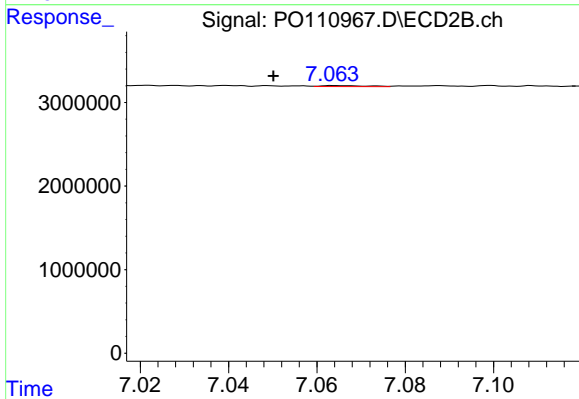
#33 AR-1260-3

R.T.: 6.570 min
 Delta R.T.: -0.010 min
 Response: 183463
 Conc: 0.79 ng/ml



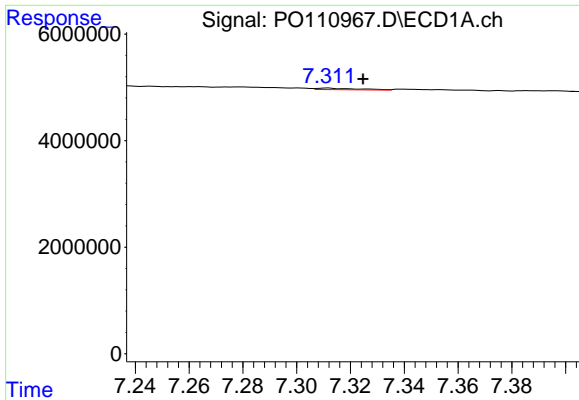
#34 AR-1260-4

R.T.: 7.090 min
 Delta R.T.: 0.007 min
 Response: 1050163
 Conc: 3.45 ng/ml



#34 AR-1260-4

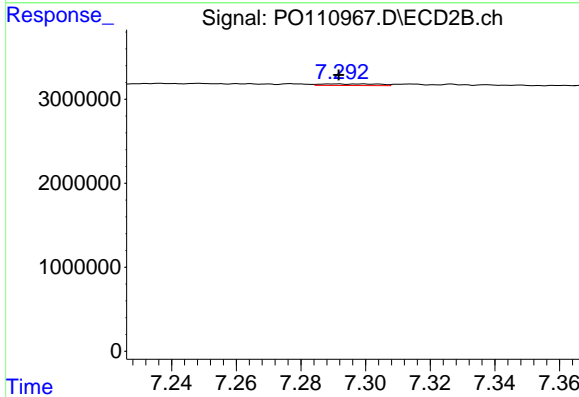
R.T.: 7.064 min
 Delta R.T.: 0.014 min
 Response: 82570
 Conc: 0.45 ng/ml



#35 AR-1260-5

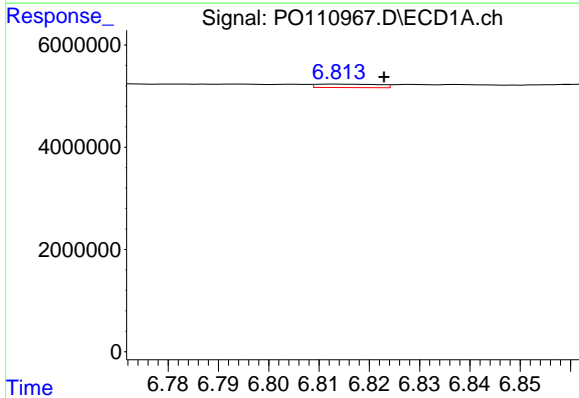
R.T.: 7.312 min
 Delta R.T.: -0.013 min
 Response: 294272
 Conc: 0.40 ng/ml

Instrument :
 ECD_O
 ClientSampleId :
 PB167901BL



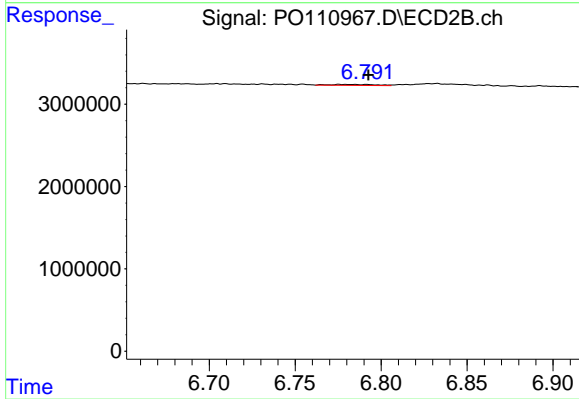
#35 AR-1260-5

R.T.: 7.299 min
 Delta R.T.: 0.007 min
 Response: 236620
 Conc: 0.60 ng/ml



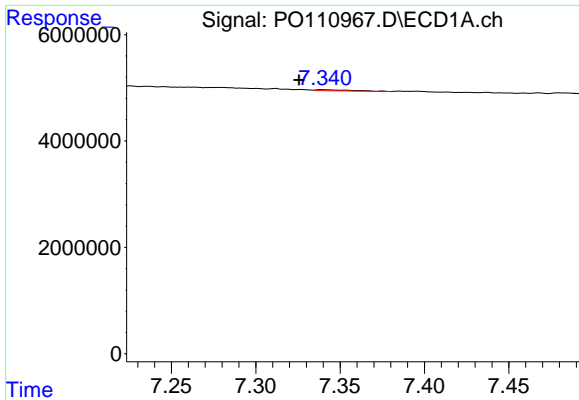
#36 AR-1262-1

R.T.: 6.814 min
 Delta R.T.: -0.009 min
 Response: 572970
 Conc: 1.24 ng/ml



#36 AR-1262-1

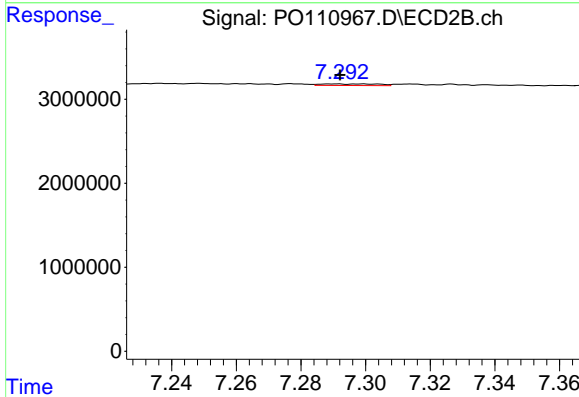
R.T.: 6.792 min
 Delta R.T.: 0.000 min
 Response: 220140
 Conc: 0.78 ng/ml



#37 AR-1262-2

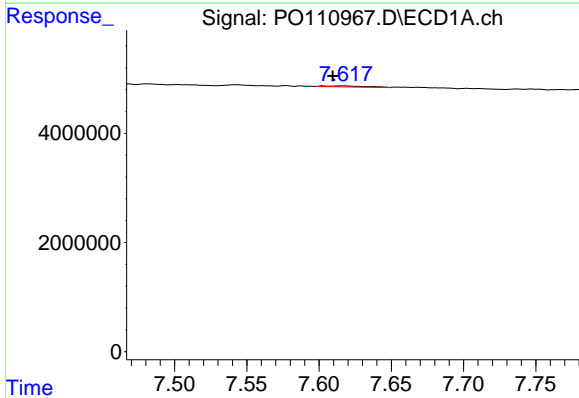
R.T.: 7.340 min
 Delta R.T.: 0.014 min
 Response: 293015
 Conc: 0.37 ng/ml

Instrument :
 ECD_O
 ClientSampleId :
 PB167901BL



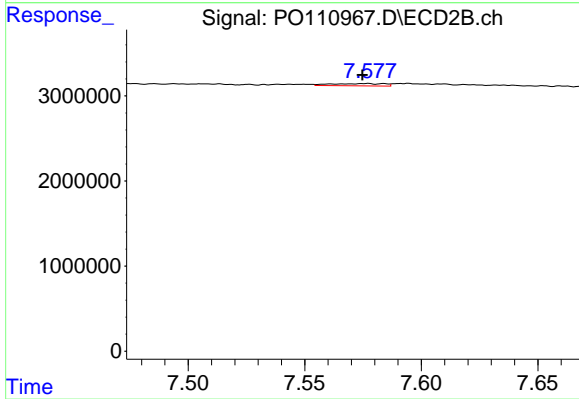
#37 AR-1262-2

R.T.: 7.299 min
 Delta R.T.: 0.007 min
 Response: 236620
 Conc: 0.54 ng/ml



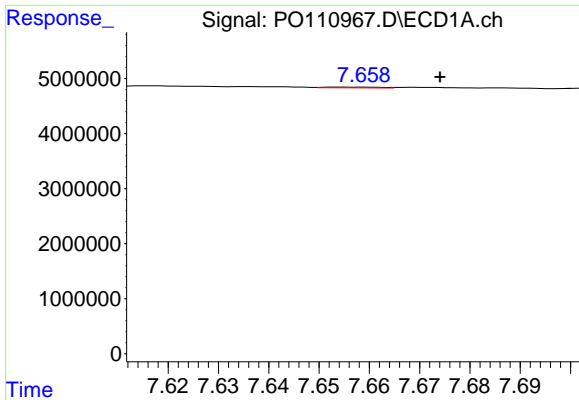
#38 AR-1262-3

R.T.: 7.617 min
 Delta R.T.: 0.007 min
 Response: 408600
 Conc: 1.22 ng/ml



#38 AR-1262-3

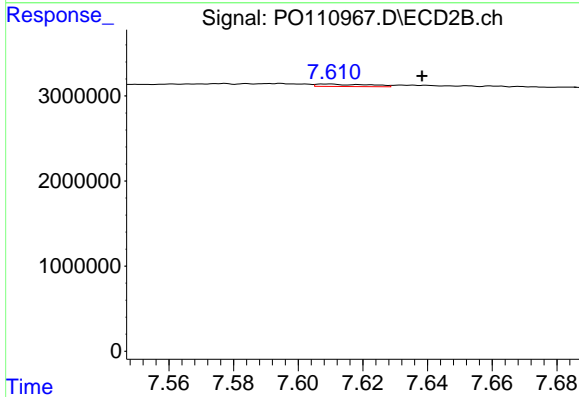
R.T.: 7.577 min
 Delta R.T.: 0.002 min
 Response: 421172
 Conc: 2.59 ng/ml



#39 AR-1262-4

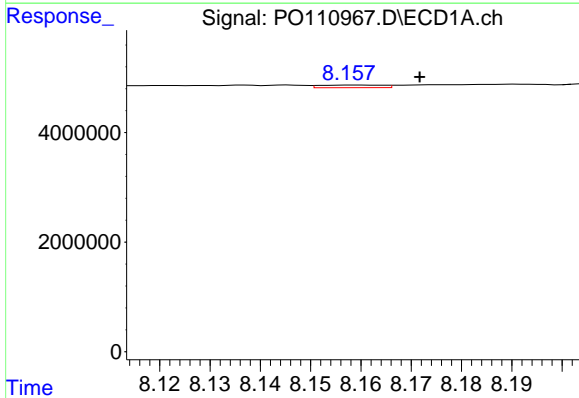
R.T.: 7.655 min
 Delta R.T.: -0.019 min
 Response: 99943
 Conc: 0.17 ng/ml

Instrument :
 ECD_O
 ClientSampleId :
 PB167901BL



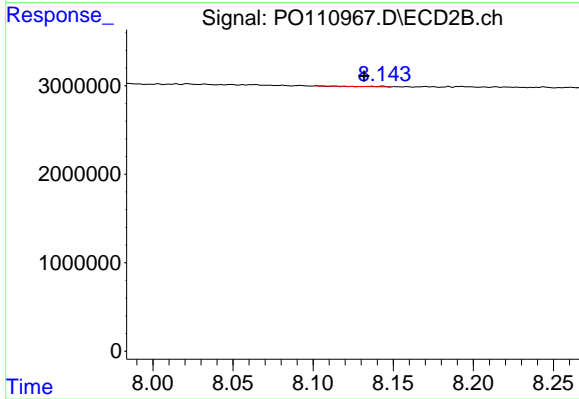
#39 AR-1262-4

R.T.: 7.609 min
 Delta R.T.: -0.029 min
 Response: 320718
 Conc: 1.10 ng/ml



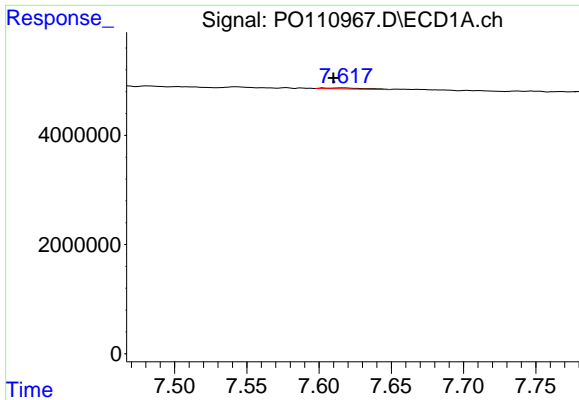
#40 AR-1262-5

R.T.: 8.159 min
 Delta R.T.: -0.013 min
 Response: 411596
 Conc: 1.54 ng/ml



#40 AR-1262-5

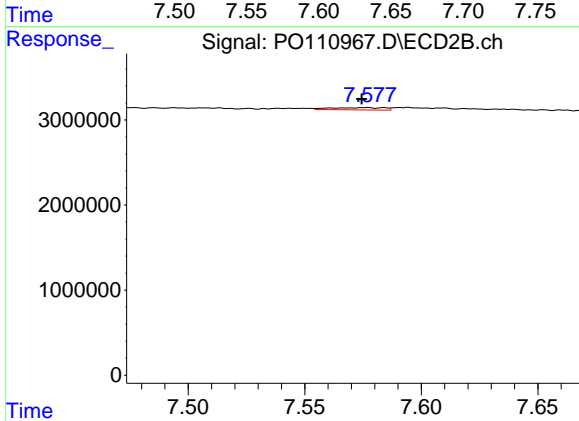
R.T.: 8.143 min
 Delta R.T.: 0.012 min
 Response: 40454
 Conc: 0.41 ng/ml



#41 AR-1268-1

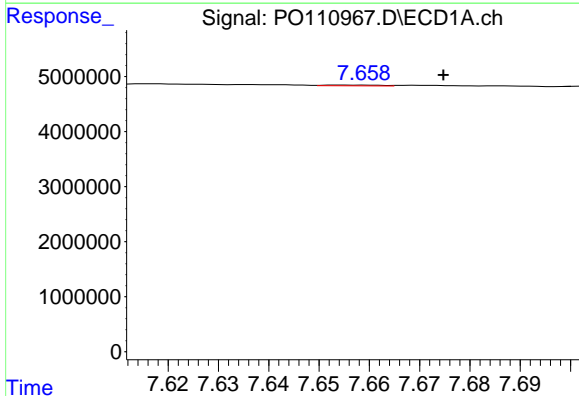
R.T.: 7.617 min
 Delta R.T.: 0.007 min
 Response: 408600
 Conc: 0.46 ng/ml

Instrument :
 ECD_O
 ClientSampleId :
 PB167901BL



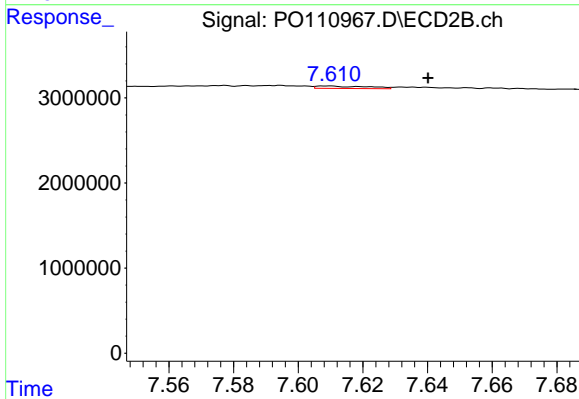
#41 AR-1268-1

R.T.: 7.577 min
 Delta R.T.: 0.002 min
 Response: 421172
 Conc: 0.98 ng/ml



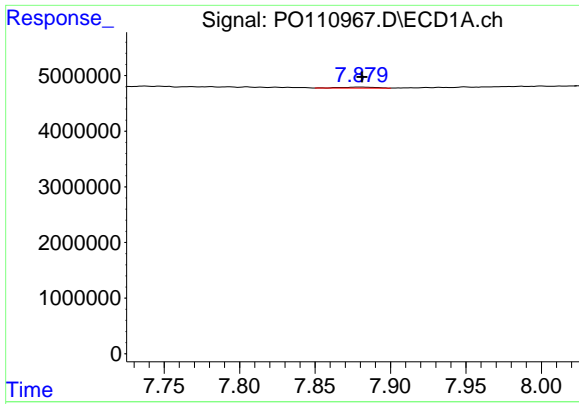
#42 AR-1268-2

R.T.: 7.655 min
 Delta R.T.: -0.020 min
 Response: 99943
 Conc: 0.12 ng/ml



#42 AR-1268-2

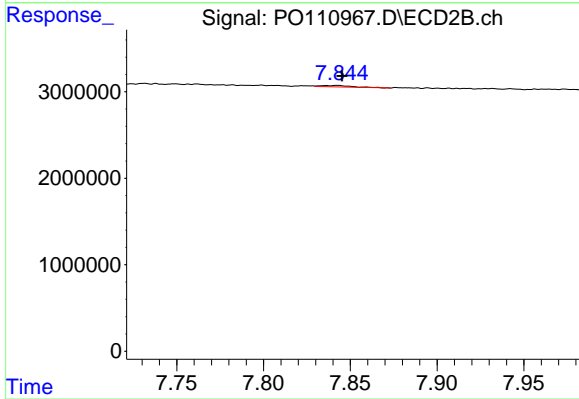
R.T.: 7.609 min
 Delta R.T.: -0.031 min
 Response: 320718
 Conc: 0.84 ng/ml



#43 AR-1268-3

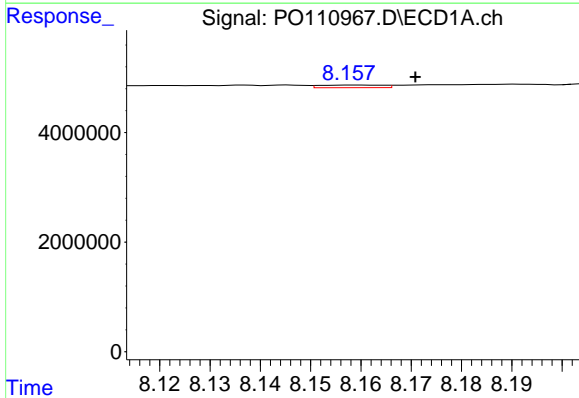
R.T.: 7.880 min
 Delta R.T.: -0.001 min
 Response: 249911
 Conc: 0.36 ng/ml

Instrument :
 ECD_O
 ClientSampleId :
 PB167901BL



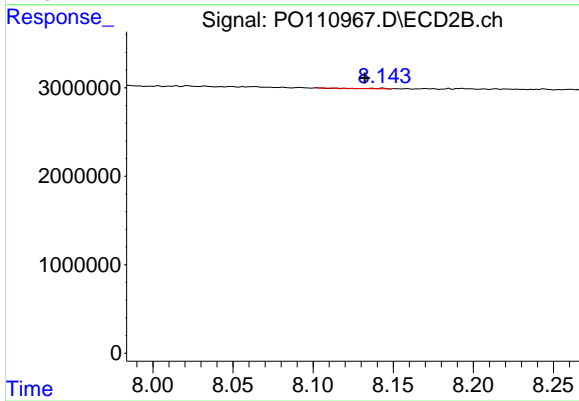
#43 AR-1268-3

R.T.: 7.843 min
 Delta R.T.: -0.003 min
 Response: 210354
 Conc: 0.74 ng/ml



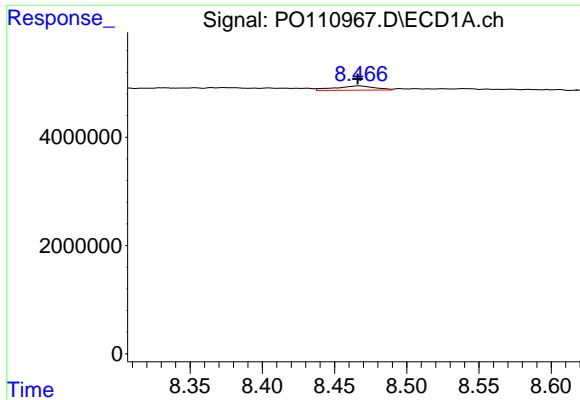
#44 AR-1268-4

R.T.: 8.159 min
 Delta R.T.: -0.012 min
 Response: 411596
 Conc: 1.48 ng/ml



#44 AR-1268-4

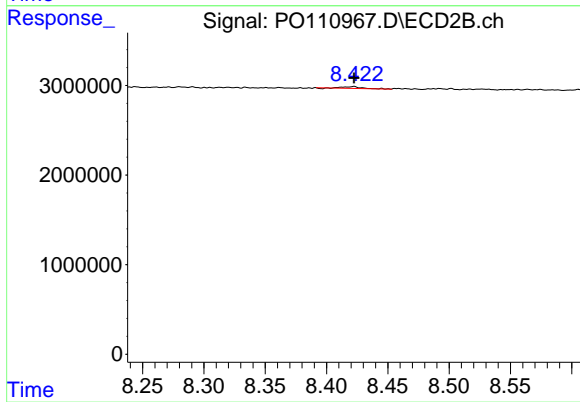
R.T.: 8.143 min
 Delta R.T.: 0.011 min
 Response: 40454
 Conc: 0.39 ng/ml



#45 AR-1268-5

R.T.: 8.467 min
 Delta R.T.: 0.000 min
 Response: 1500999
 Conc: 0.73 ng/ml

Instrument :
 ECD_O
 ClientSampleId :
 PB167901BL



#45 AR-1268-5

R.T.: 8.422 min
 Delta R.T.: 0.000 min
 Response: 167648
 Conc: 0.28 ng/ml