

Data Path : Z:\pestpcbsrv\HPCHEM1\ECD_0\Data\P0050825\
 Data File : PO110974.D
 Signal(s) : Signal #1: ECD1A.ch Signal #2: ECD2B.ch
 Acq On : 08 May 2025 23:37
 Operator : YP/AJ
 Sample : Q1979-02 10X
 Misc :
 ALS Vial : 26 Sample Multiplier: 1

Instrument :
 ECD_0
 ClientSampleId :
 BC247637-1-2

Integration File signal 1: autoint1.e
 Integration File signal 2: autoint2.e
 Quant Time: May 09 01:55:30 2025
 Quant Method : Z:\pestpcbsrv\HPCHEM1\ECD_0\methods\P0050225.M
 Quant Title : GC EXTRACTABLES
 QLast Update : Fri May 02 23:47:49 2025
 Response via : Initial Calibration
 Integrator: ChemStation

Volume Inj. : 2 µl
 Signal #1 Phase : ZB-MR1 Signal #2 Phase: ZB-MR2
 Signal #1 Info : 30Mx0.32mmx 0.50µ Signal #2 Info : 30M x 0.32mm x 0.25µm

Compound	RT#1	RT#2	Resp#1	Resp#2	ng/ml	ng/ml
System Monitoring Compounds						
1) SA Tetrachlo...	3.684	3.680	9400386	8324088	1.643	1.719
2) SA Decachlor...	8.726	8.675	7189504	2492192	1.178	1.477 #
Target Compounds						
3) L1 AR-1016-1	4.781	4.767	1351000	1064770	6.113	6.702
4) L1 AR-1016-2	4.781	4.767	1351000	1064770	4.356	4.658
5) L1 AR-1016-3	4.836	4.979	379841	64228	1.661	0.527 #
6) L1 AR-1016-4	4.955	5.001	845452	409905	5.057	4.068
7) L1 AR-1016-5	5.215	5.197	181449	296242	1.019	2.254 #
8) L2 AR-1221-1	3.864	3.886	955440	349474	10.973	5.250 #
9) L2 AR-1221-2	4.005	3.980	333551	454869	4.926	8.861 #
10) L2 AR-1221-3	4.054	4.055	213627	182983	1.080	1.196
11) L3 AR-1232-1	4.054	4.055	213627	182983	1.391	1.558
12) L3 AR-1232-2	4.563	4.767	321968	1064770	3.908	9.256 #
13) L3 AR-1232-3	4.781	4.979	1351000	64228	8.492	1.065 #
14) L3 AR-1232-4	4.955	5.028	845452	62700	10.044	1.125 #
15) L3 AR-1232-5	5.020	5.197	753594	296242	12.800	5.033 #
16) L4 AR-1242-1	4.781	4.767	1351000	1064770	7.345	8.047
17) L4 AR-1242-2	4.781	4.767	1351000	1064770	5.244	5.602
18) L4 AR-1242-3	4.836	4.979	379841	64228	2.086	0.634 #
19) L4 AR-1242-4	4.955	5.028	845452	62700	6.054	0.605 #
20) L4 AR-1242-5	5.631	5.583	757556	1012196	4.859	7.997 #
21) L5 AR-1248-1	4.781	4.767	1351000	1064770	10.285	11.048
22) L5 AR-1248-2	5.020	5.001	753594	409905	4.301	3.034 #
23) L5 AR-1248-3	5.215	5.028	181449	62700	0.823	0.432 #
24) L5 AR-1248-4	5.583	5.197	268743	296242	0.820	1.768 #
25) L5 AR-1248-5	5.631	5.605	757556	572603	3.245	3.411
26) L6 AR-1254-1	5.583	5.583	268743	1012196	0.796	4.032 #
27) L6 AR-1254-2	5.766	5.692	140491	302760	0.488	1.388 #
28) L6 AR-1254-3	6.135	6.094	1173980	1210595	2.567	3.622 #
29) L6 AR-1254-4	6.365	6.345	1207476	842527	3.961	4.339
30) L6 AR-1254-5	6.789	6.746	1672205	174258	3.964	0.650 #
31) L7 AR-1260-1	6.259	6.232	1299978	775510	3.908	3.513
32) L7 AR-1260-2	6.457	6.422	22480	285423	0.054	1.110 #
33) L7 AR-1260-3	6.825	6.582	933294	193982	2.649	0.832 #
34) L7 AR-1260-4	7.119f	7.031	504168	73780	1.657	0.405 #
35) L7 AR-1260-5	7.344	7.274	1685557	1365728	2.295	3.473 #
36) L8 AR-1262-1	6.825	6.787	933294	98715	2.027	0.350 #
37) L8 AR-1262-2	7.344	7.274	1685557	1365728	2.143	3.109 #
38) L8 AR-1262-3	7.609	7.571	360436	79223	1.079	0.488 #
39) L8 AR-1262-4	7.666	7.643	440546	78028	0.762	0.268 #
40) L8 AR-1262-5	8.156	8.107	283156	73577	1.061	0.746 #
41) L9 AR-1268-1	7.609	7.571	360436	79223	0.405	0.184 #

Data Path : Z:\pestpcbsrv\HPCHEM1\ECD_0\Data\P0050825\
 Data File : P0110974.D
 Signal(s) : Signal #1: ECD1A.ch Signal #2: ECD2B.ch
 Acq On : 08 May 2025 23:37
 Operator : YP/AJ
 Sample : Q1979-02 10X
 Misc :
 ALS Vial : 26 Sample Multiplier: 1

Instrument :
 ECD_0
 ClientSampleId :
 BC247637-1-2

Integration File signal 1: autoint1.e
 Integration File signal 2: autoint2.e
 Quant Time: May 09 01:55:30 2025
 Quant Method : Z:\pestpcbsrv\HPCHEM1\ECD_0\methods\P0050225.M
 Quant Title : GC EXTRACTABLES
 QLast Update : Fri May 02 23:47:49 2025
 Response via : Initial Calibration
 Integrator: ChemStation

Volume Inj. : 2 µl
 Signal #1 Phase : ZB-MR1 Signal #2 Phase: ZB-MR2
 Signal #1 Info : 30Mx0.32mmx 0.50µ Signal #2 Info : 30M x 0.32mm x 0.25µm

	Compound	RT#1	RT#2	Resp#1	Resp#2	ng/ml	ng/ml
42)	L9 AR-1268-2	7.666	7.643	440546	78028	0.549	0.203 #
43)	L9 AR-1268-3	7.861	7.843	764897	69524	1.114	0.245 #
44)	L9 AR-1268-4	8.156	8.107	283156	73577	1.019	0.707 #
45)	L9 AR-1268-5	8.479	8.418	357889	828	0.175	0.001 #

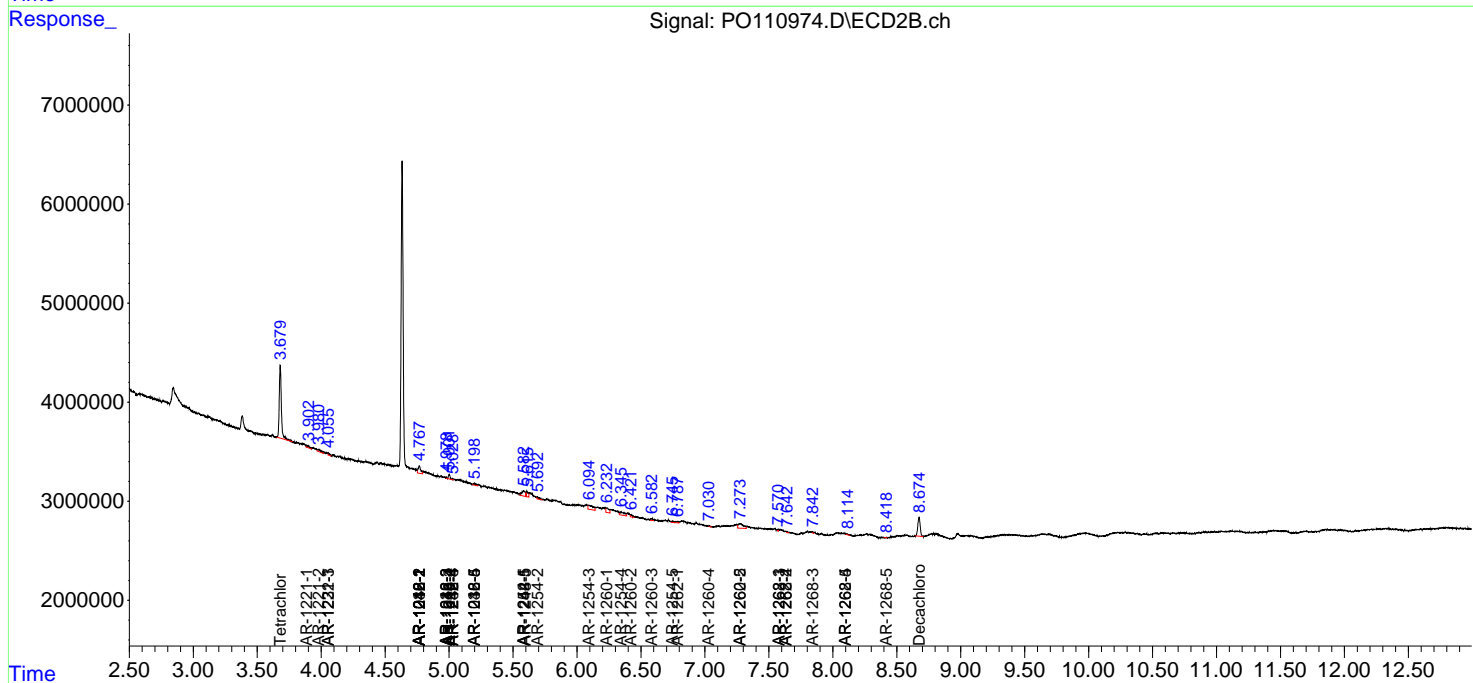
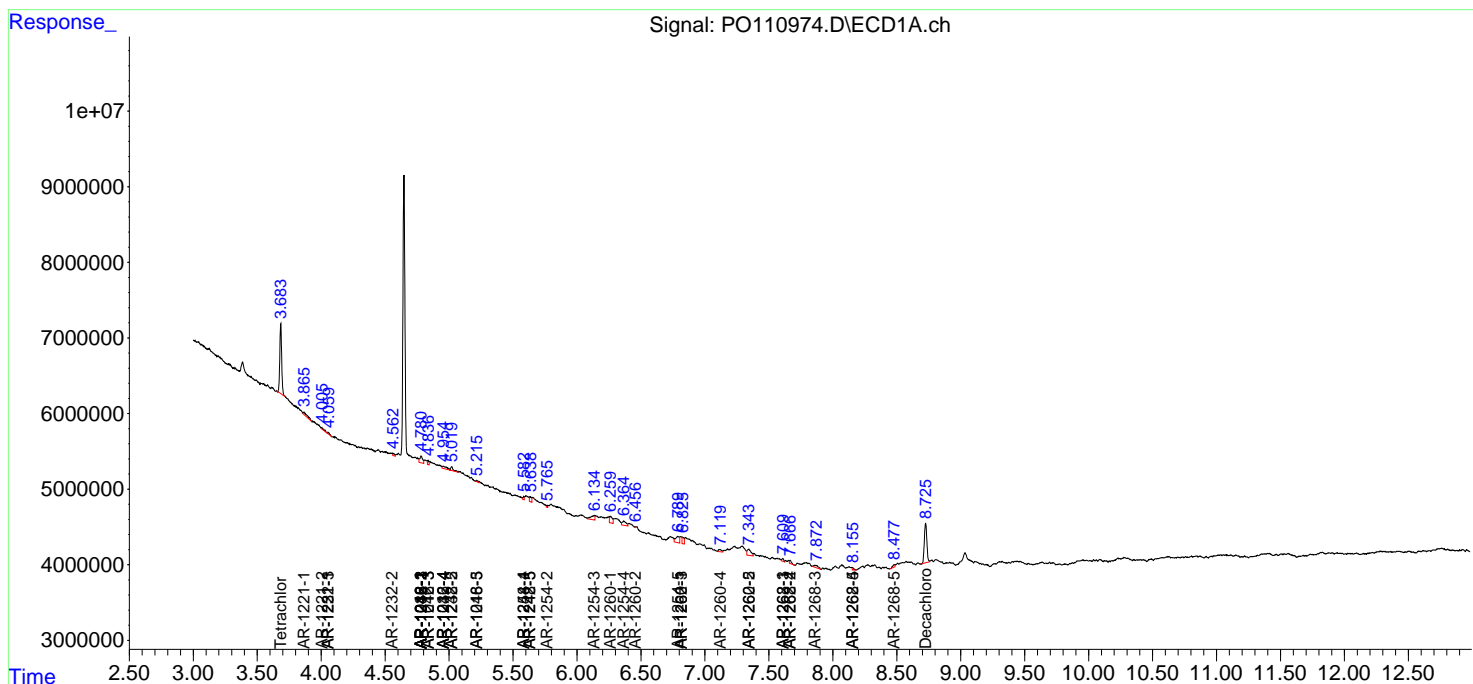
(f)=RT Delta > 1/2 Window (#)=Amounts differ by > 25% (m)=manual int.

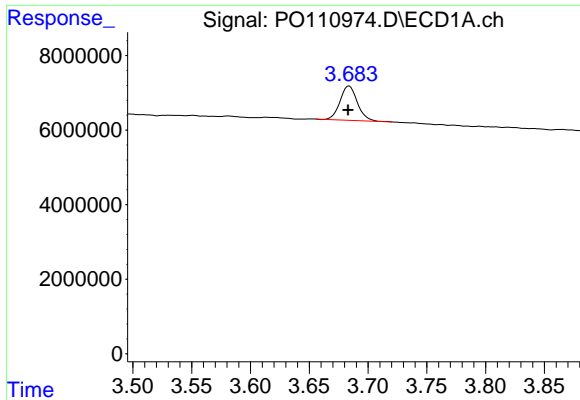
Data Path : Z:\pestpcbsrv\HPCHEM1\ECD_O\Data\P0050825\
 Data File : PO110974.D
 Signal(s) : Signal #1: ECD1A.ch Signal #2: ECD2B.ch
 Acq On : 08 May 2025 23:37
 Operator : YP/AJ
 Sample : Q1979-02 10X
 Misc :
 ALS Vial : 26 Sample Multiplier: 1

Instrument :
 ECD_O
 ClientSampleId :
 BC247637-1-2

Integration File signal 1: autoint1.e
 Integration File signal 2: autoint2.e
 Quant Time: May 09 01:55:30 2025
 Quant Method : Z:\pestpcbsrv\HPCHEM1\ECD_O\methods\P0050225.M
 Quant Title : GC EXTRACTABLES
 QLast Update : Fri May 02 23:47:49 2025
 Response via : Initial Calibration
 Integrator: ChemStation

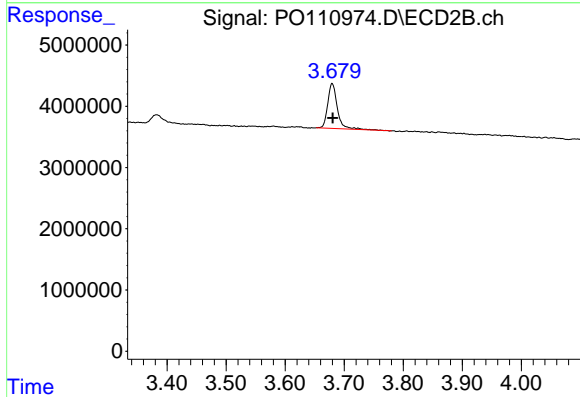
Volume Inj. : 2 µl
 Signal #1 Phase : ZB-MR1 Signal #2 Phase: ZB-MR2
 Signal #1 Info : 30Mx0.32mmx 0.50µ Signal #2 Info : 30M x 0.32mm x 0.25µm



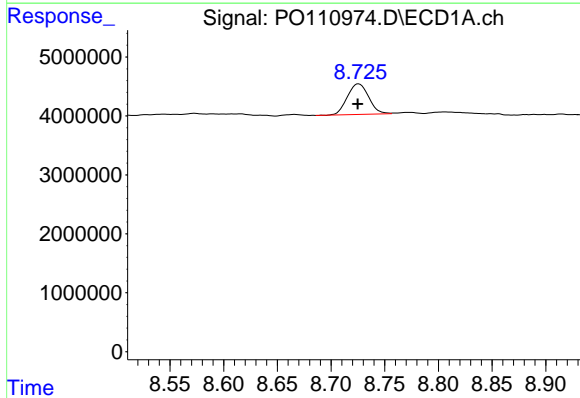


#1 Tetrachloro-m-xylene
 R.T.: 3.684 min
 Delta R.T.: 0.000 min
 Response: 9400386
 Conc: 1.64 ng/ml

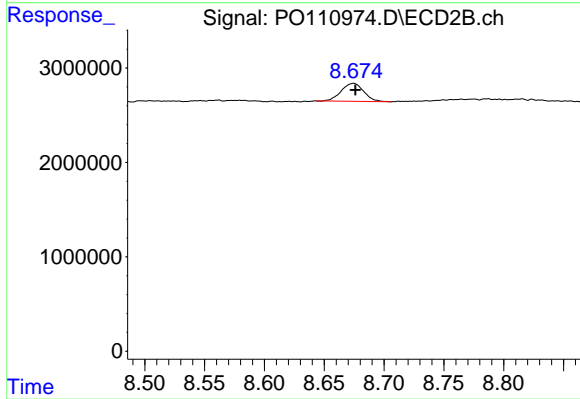
Instrument :
 ECD_O
 ClientSampleId :
 BC247637-1-2



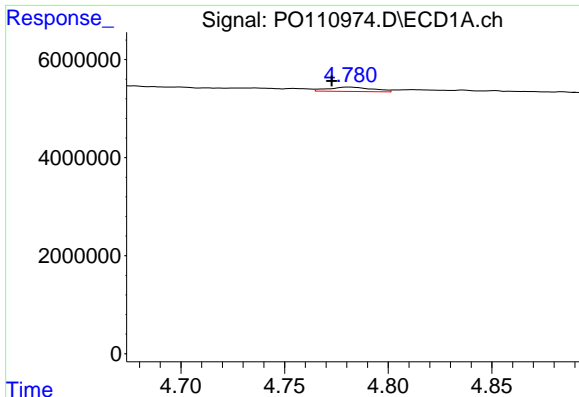
#1 Tetrachloro-m-xylene
 R.T.: 3.680 min
 Delta R.T.: 0.000 min
 Response: 8324088
 Conc: 1.72 ng/ml



#2 Decachlorobiphenyl
 R.T.: 8.726 min
 Delta R.T.: 0.000 min
 Response: 7189504
 Conc: 1.18 ng/ml



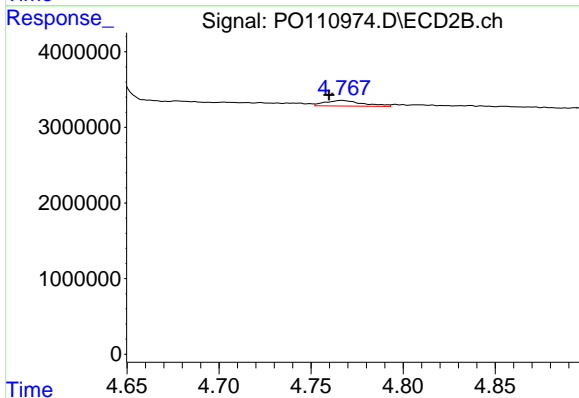
#2 Decachlorobiphenyl
 R.T.: 8.675 min
 Delta R.T.: -0.001 min
 Response: 2492192
 Conc: 1.48 ng/ml



#3 AR-1016-1

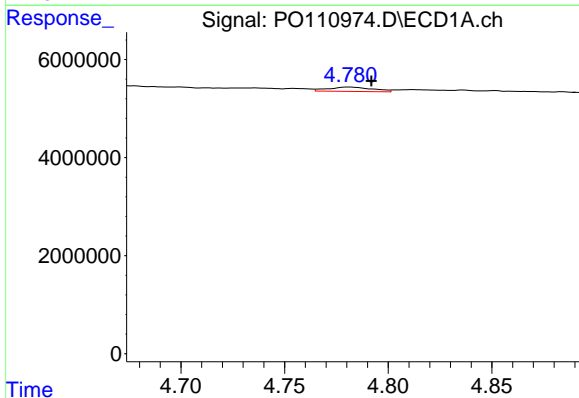
R.T.: 4.781 min
 Delta R.T.: 0.008 min
 Response: 1351000
 Conc: 6.11 ng/ml

Instrument :
 ECD_O
 ClientSampleId :
 BC247637-1-2



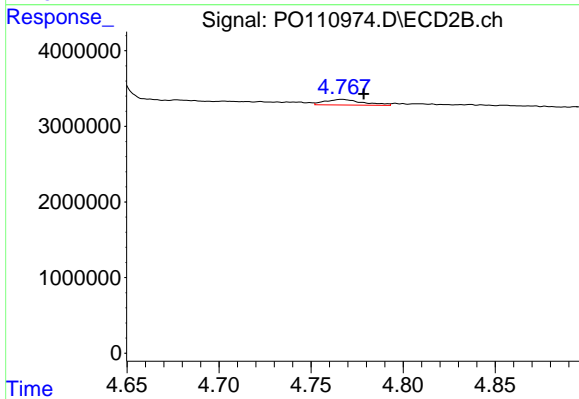
#3 AR-1016-1

R.T.: 4.767 min
 Delta R.T.: 0.007 min
 Response: 1064770
 Conc: 6.70 ng/ml



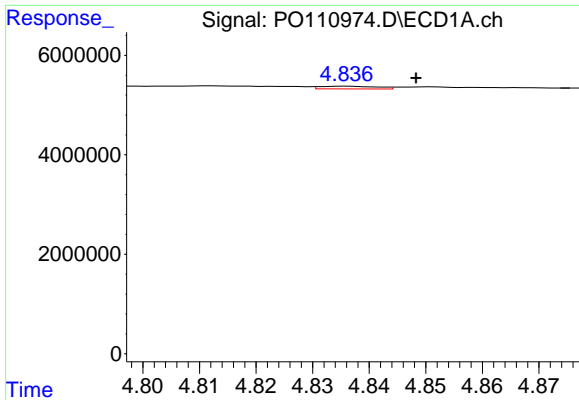
#4 AR-1016-2

R.T.: 4.781 min
 Delta R.T.: -0.011 min
 Response: 1351000
 Conc: 4.36 ng/ml



#4 AR-1016-2

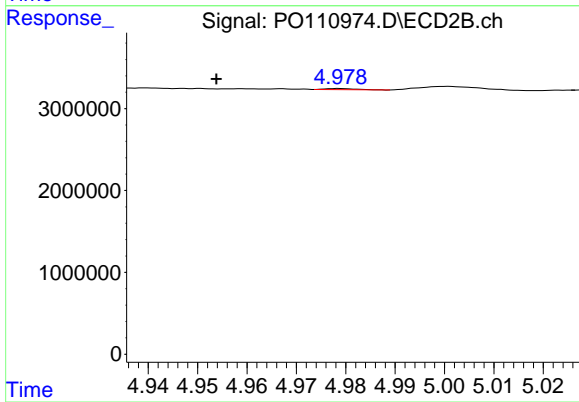
R.T.: 4.767 min
 Delta R.T.: -0.012 min
 Response: 1064770
 Conc: 4.66 ng/ml



#5 AR-1016-3

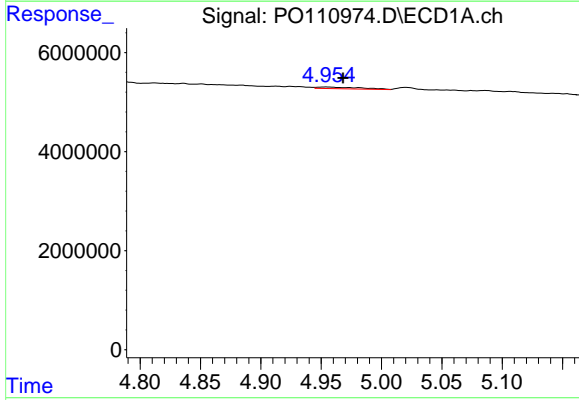
R.T.: 4.836 min
 Delta R.T.: -0.012 min
 Response: 379841
 Conc: 1.66 ng/ml

Instrument :
 ECD_O
 ClientSampleId :
 BC247637-1-2



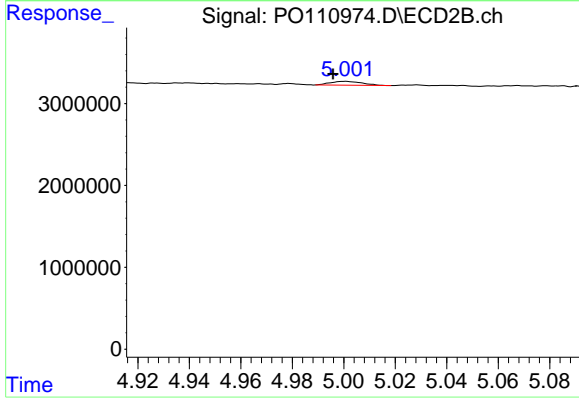
#5 AR-1016-3

R.T.: 4.979 min
 Delta R.T.: 0.025 min
 Response: 64228
 Conc: 0.53 ng/ml



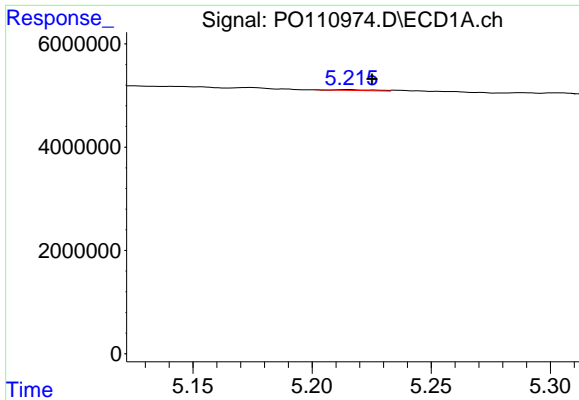
#6 AR-1016-4

R.T.: 4.955 min
 Delta R.T.: -0.013 min
 Response: 845452
 Conc: 5.06 ng/ml



#6 AR-1016-4

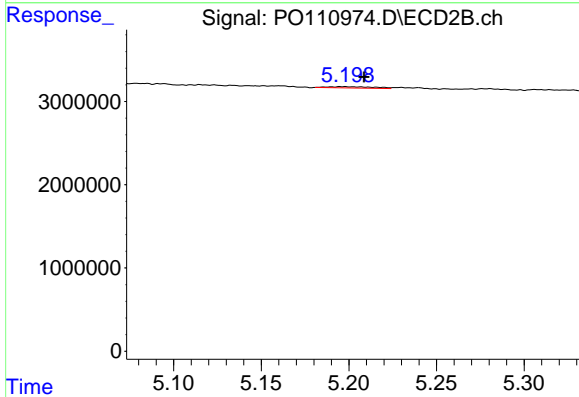
R.T.: 5.001 min
 Delta R.T.: 0.005 min
 Response: 409905
 Conc: 4.07 ng/ml



#7 AR-1016-5

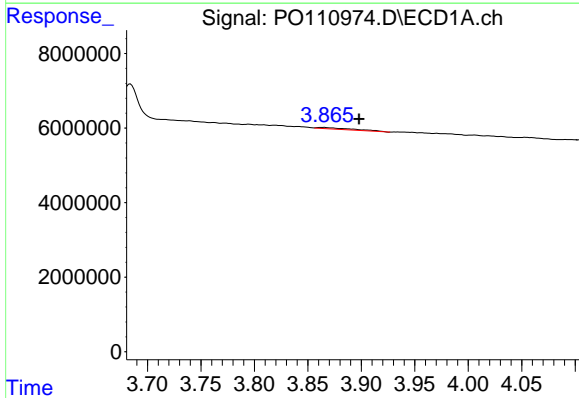
R.T.: 5.215 min
 Delta R.T.: -0.010 min
 Response: 181449
 Conc: 1.02 ng/ml

Instrument :
 ECD_O
 ClientSampleId :
 BC247637-1-2



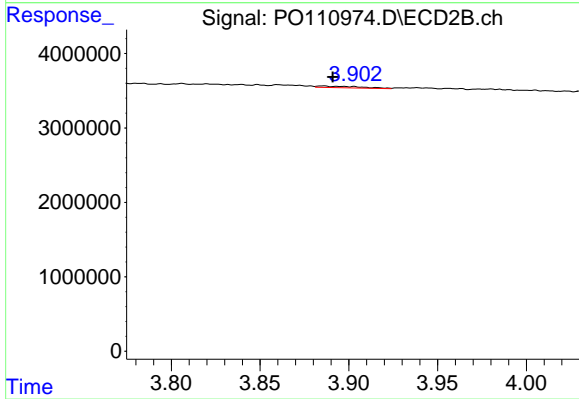
#7 AR-1016-5

R.T.: 5.197 min
 Delta R.T.: -0.011 min
 Response: 296242
 Conc: 2.25 ng/ml



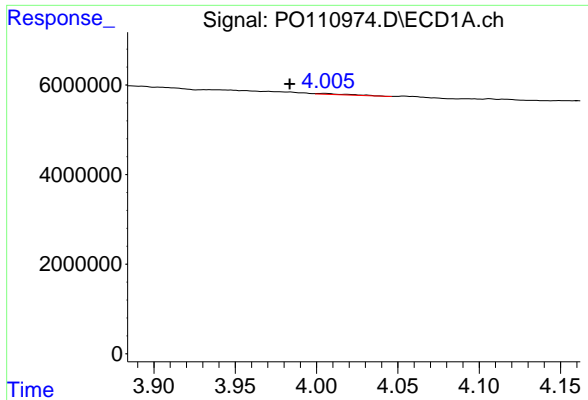
#8 AR-1221-1

R.T.: 3.864 min
 Delta R.T.: -0.034 min
 Response: 955440
 Conc: 10.97 ng/ml



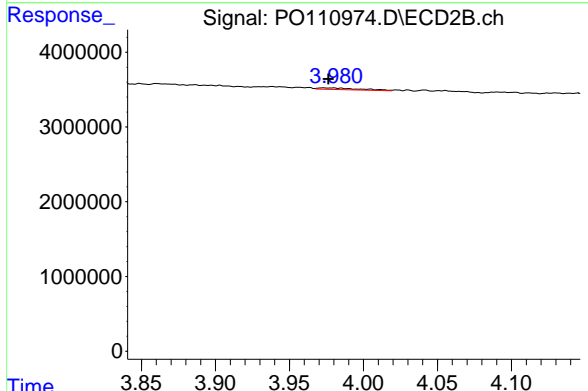
#8 AR-1221-1

R.T.: 3.886 min
 Delta R.T.: -0.005 min
 Response: 349474
 Conc: 5.25 ng/ml

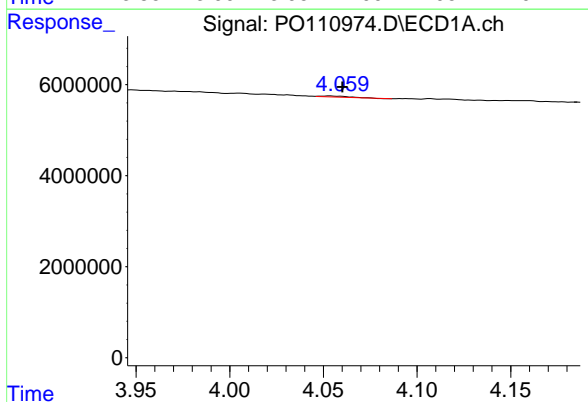


#9 AR-1221-2
 R.T.: 4.005 min
 Delta R.T.: 0.022 min
 Response: 333551
 Conc: 4.93 ng/ml

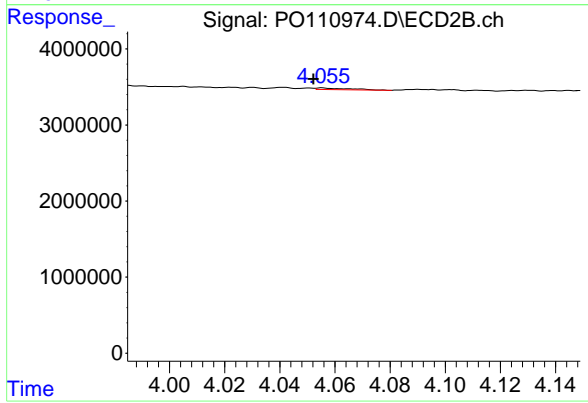
Instrument :
 ECD_O
 ClientSampleId :
 BC247637-1-2



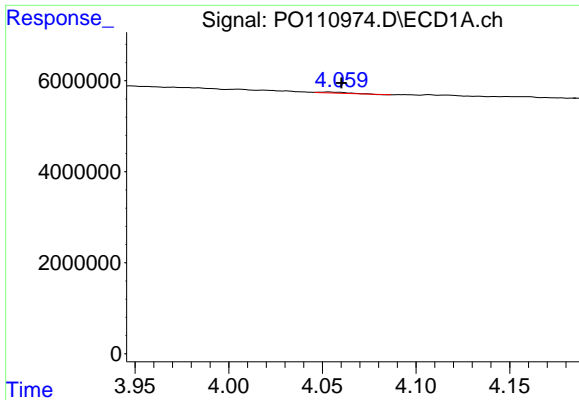
#9 AR-1221-2
 R.T.: 3.980 min
 Delta R.T.: 0.003 min
 Response: 454869
 Conc: 8.86 ng/ml



#10 AR-1221-3
 R.T.: 4.054 min
 Delta R.T.: -0.006 min
 Response: 213627
 Conc: 1.08 ng/ml



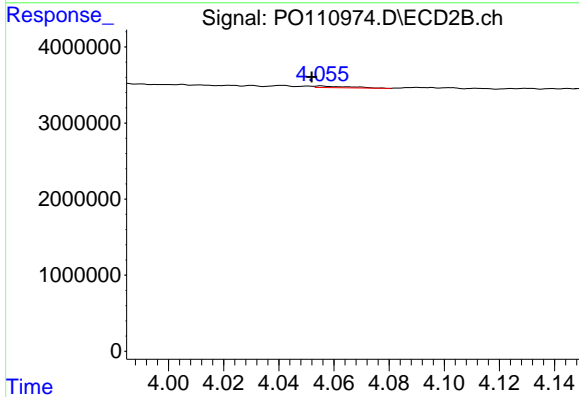
#10 AR-1221-3
 R.T.: 4.055 min
 Delta R.T.: 0.003 min
 Response: 182983
 Conc: 1.20 ng/ml



#11 AR-1232-1

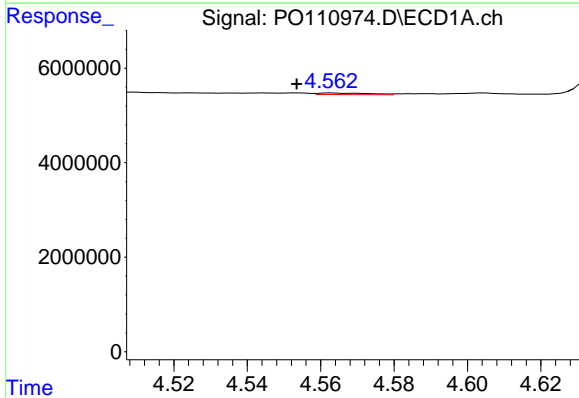
R.T.: 4.054 min
 Delta R.T.: -0.006 min
 Response: 213627
 Conc: 1.39 ng/ml

Instrument :
 ECD_O
 ClientSampleId :
 BC247637-1-2



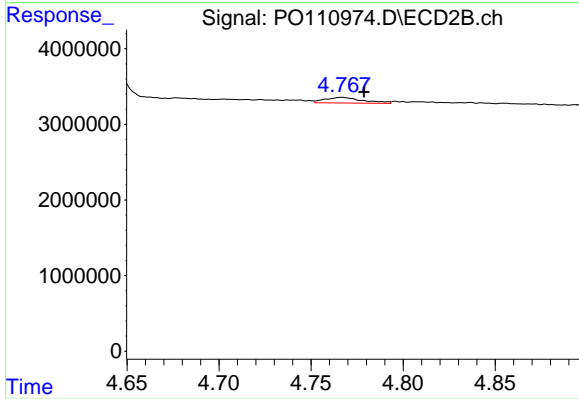
#11 AR-1232-1

R.T.: 4.055 min
 Delta R.T.: 0.003 min
 Response: 182983
 Conc: 1.56 ng/ml



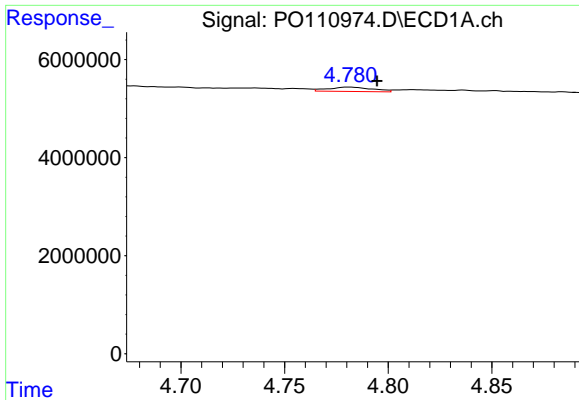
#12 AR-1232-2

R.T.: 4.563 min
 Delta R.T.: 0.009 min
 Response: 321968
 Conc: 3.91 ng/ml



#12 AR-1232-2

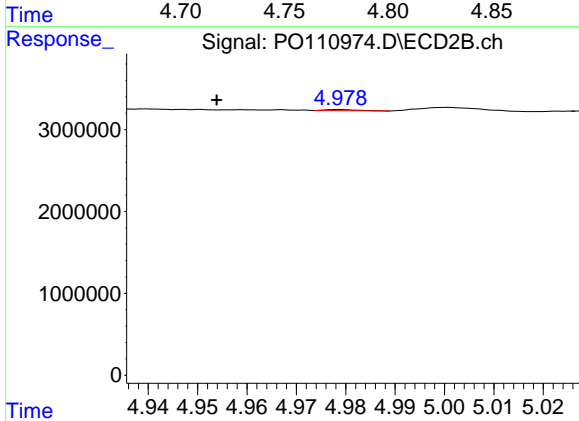
R.T.: 4.767 min
 Delta R.T.: -0.012 min
 Response: 1064770
 Conc: 9.26 ng/ml



#13 AR-1232-3

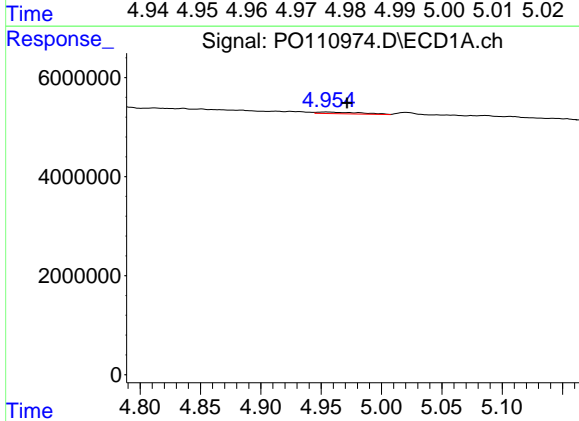
R.T.: 4.781 min
 Delta R.T.: -0.014 min
 Response: 1351000
 Conc: 8.49 ng/ml

Instrument :
 ECD_O
 ClientSampleId :
 BC247637-1-2



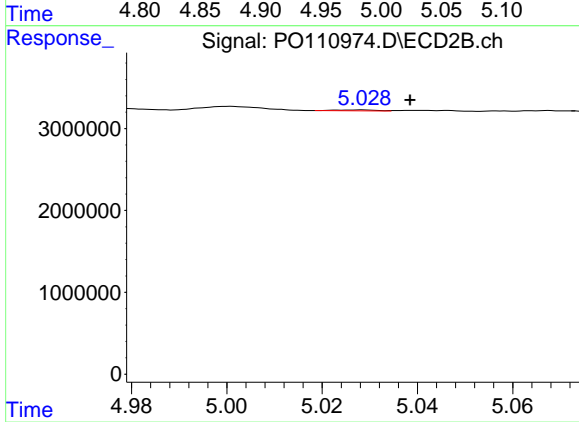
#13 AR-1232-3

R.T.: 4.979 min
 Delta R.T.: 0.025 min
 Response: 64228
 Conc: 1.07 ng/ml



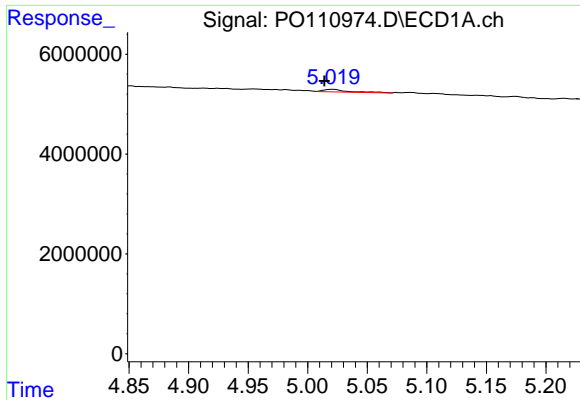
#14 AR-1232-4

R.T.: 4.955 min
 Delta R.T.: -0.017 min
 Response: 845452
 Conc: 10.04 ng/ml



#14 AR-1232-4

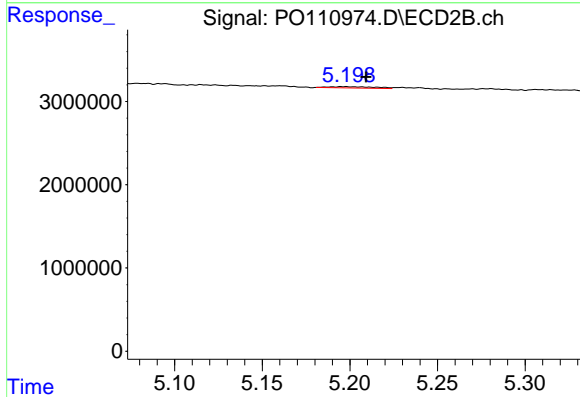
R.T.: 5.028 min
 Delta R.T.: -0.010 min
 Response: 62700
 Conc: 1.13 ng/ml



#15 AR-1232-5

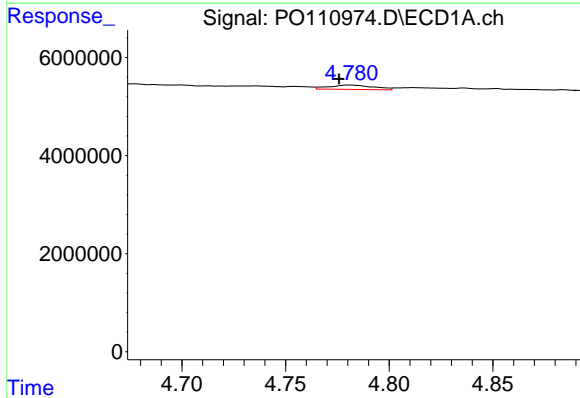
R.T.: 5.020 min
 Delta R.T.: 0.006 min
 Response: 753594
 Conc: 12.80 ng/ml

Instrument :
 ECD_O
 ClientSampleId :
 BC247637-1-2



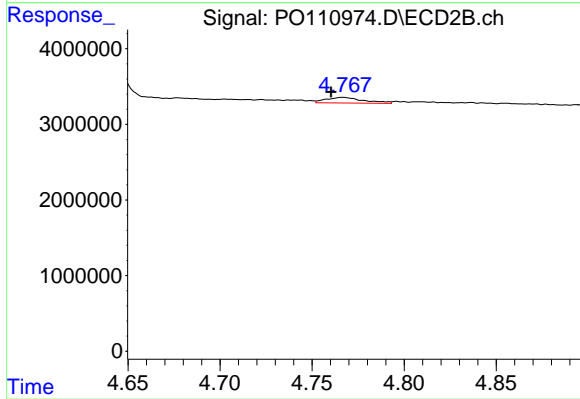
#15 AR-1232-5

R.T.: 5.197 min
 Delta R.T.: -0.012 min
 Response: 296242
 Conc: 5.03 ng/ml



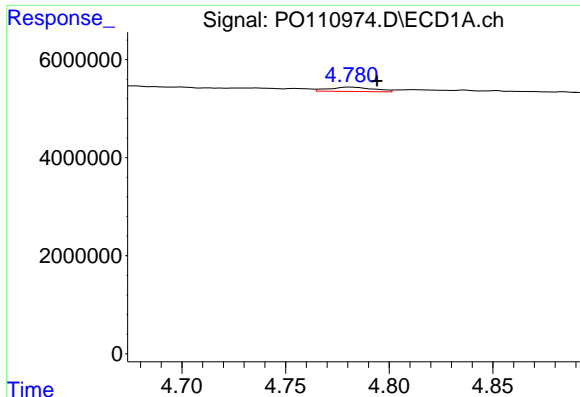
#16 AR-1242-1

R.T.: 4.781 min
 Delta R.T.: 0.005 min
 Response: 1351000
 Conc: 7.35 ng/ml



#16 AR-1242-1

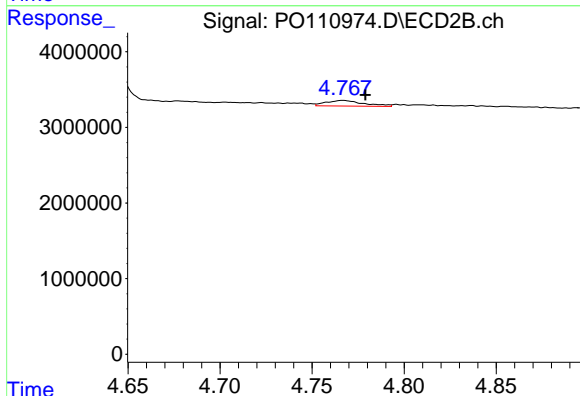
R.T.: 4.767 min
 Delta R.T.: 0.006 min
 Response: 1064770
 Conc: 8.05 ng/ml



#17 AR-1242-2

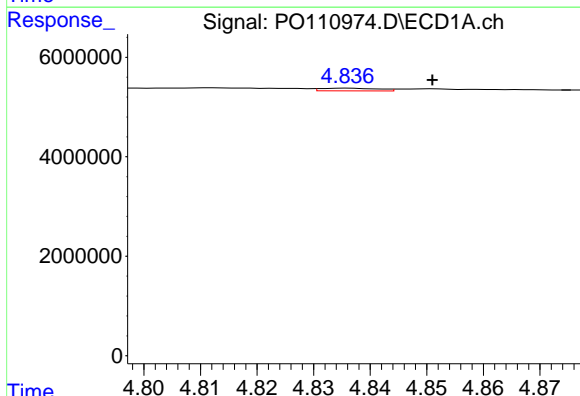
R.T.: 4.781 min
 Delta R.T.: -0.013 min
 Response: 1351000
 Conc: 5.24 ng/ml

Instrument :
 ECD_O
 ClientSampleId :
 BC247637-1-2



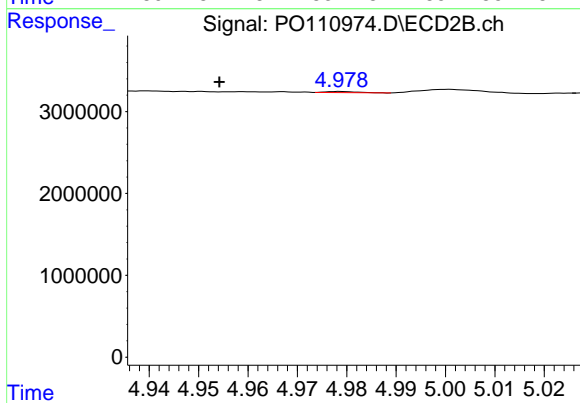
#17 AR-1242-2

R.T.: 4.767 min
 Delta R.T.: -0.012 min
 Response: 1064770
 Conc: 5.60 ng/ml



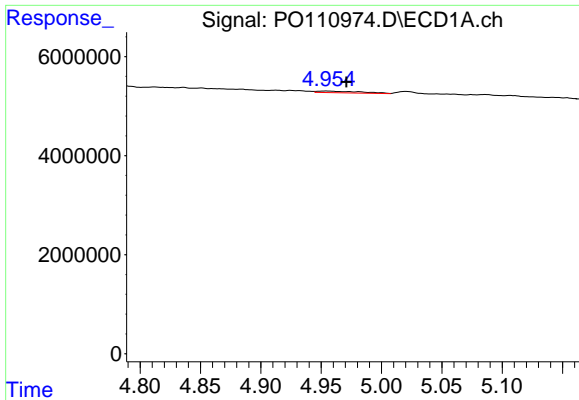
#18 AR-1242-3

R.T.: 4.836 min
 Delta R.T.: -0.015 min
 Response: 379841
 Conc: 2.09 ng/ml



#18 AR-1242-3

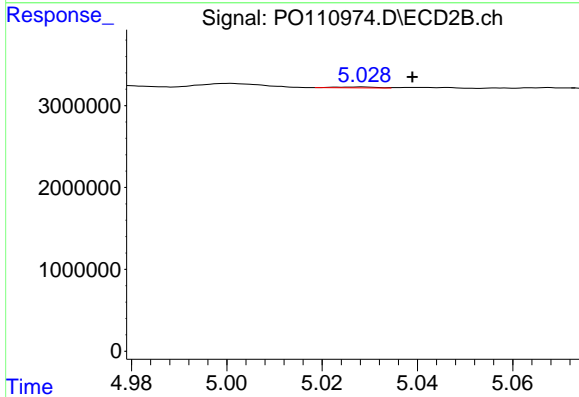
R.T.: 4.979 min
 Delta R.T.: 0.025 min
 Response: 64228
 Conc: 0.63 ng/ml



#19 AR-1242-4

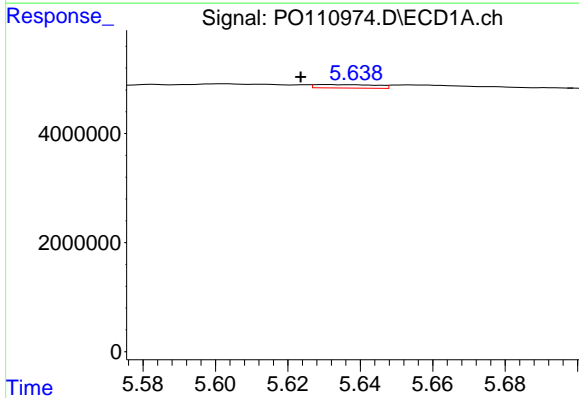
R.T.: 4.955 min
 Delta R.T.: -0.016 min
 Response: 845452
 Conc: 6.05 ng/ml

Instrument :
 ECD_O
 ClientSampleId :
 BC247637-1-2



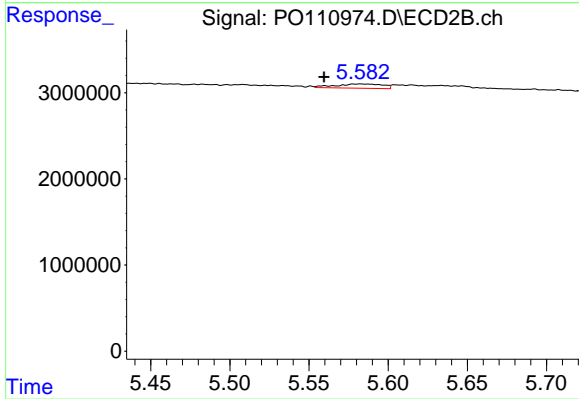
#19 AR-1242-4

R.T.: 5.028 min
 Delta R.T.: -0.010 min
 Response: 62700
 Conc: 0.60 ng/ml



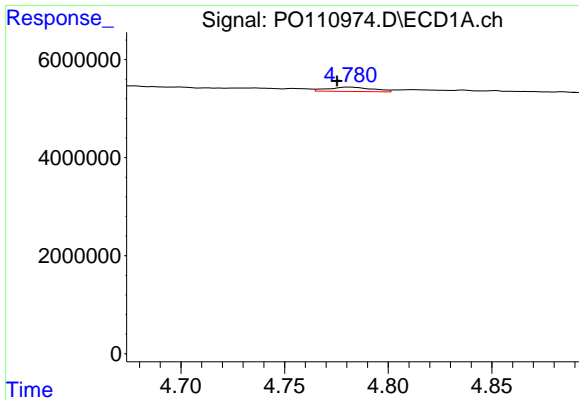
#20 AR-1242-5

R.T.: 5.631 min
 Delta R.T.: 0.007 min
 Response: 757556
 Conc: 4.86 ng/ml



#20 AR-1242-5

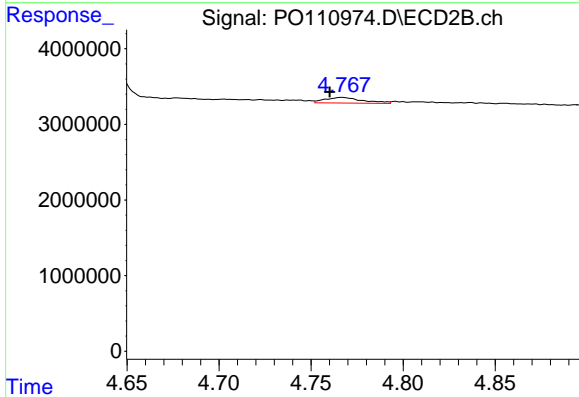
R.T.: 5.583 min
 Delta R.T.: 0.023 min
 Response: 1012196
 Conc: 8.00 ng/ml



#21 AR-1248-1

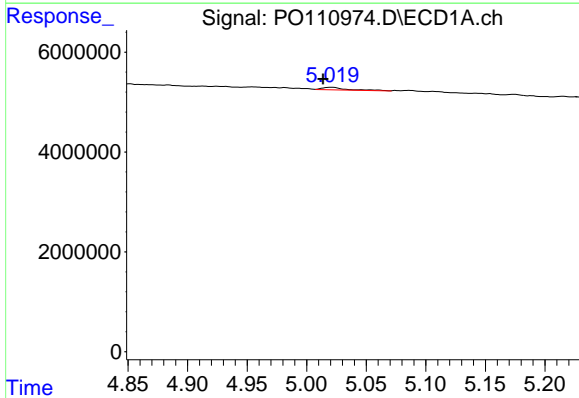
R.T.: 4.781 min
 Delta R.T.: 0.005 min
 Response: 1351000
 Conc: 10.28 ng/ml

Instrument :
 ECD_O
 ClientSampleId :
 BC247637-1-2



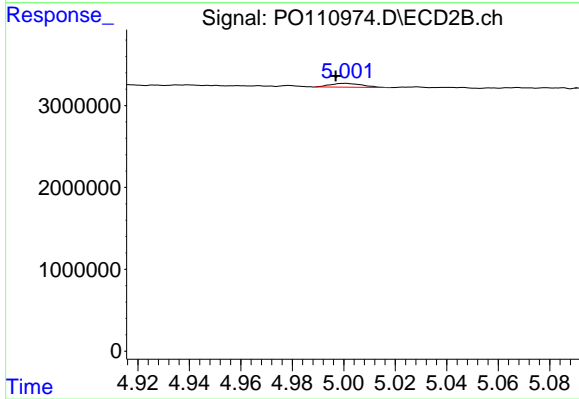
#21 AR-1248-1

R.T.: 4.767 min
 Delta R.T.: 0.007 min
 Response: 1064770
 Conc: 11.05 ng/ml



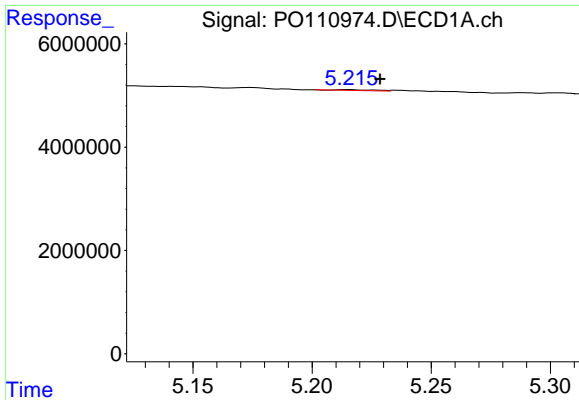
#22 AR-1248-2

R.T.: 5.020 min
 Delta R.T.: 0.007 min
 Response: 753594
 Conc: 4.30 ng/ml



#22 AR-1248-2

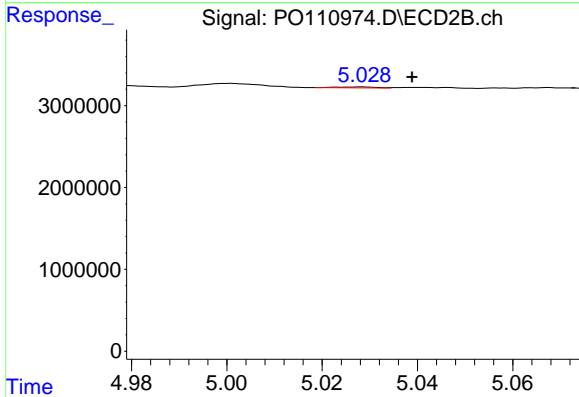
R.T.: 5.001 min
 Delta R.T.: 0.004 min
 Response: 409905
 Conc: 3.03 ng/ml



#23 AR-1248-3

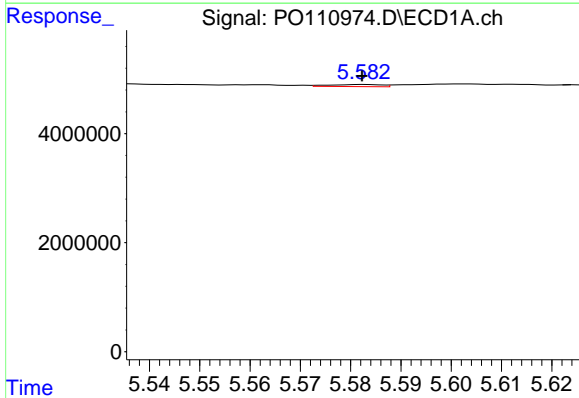
R.T.: 5.215 min
 Delta R.T.: -0.013 min
 Response: 181449
 Conc: 0.82 ng/ml

Instrument :
 ECD_O
 ClientSampleId :
 BC247637-1-2



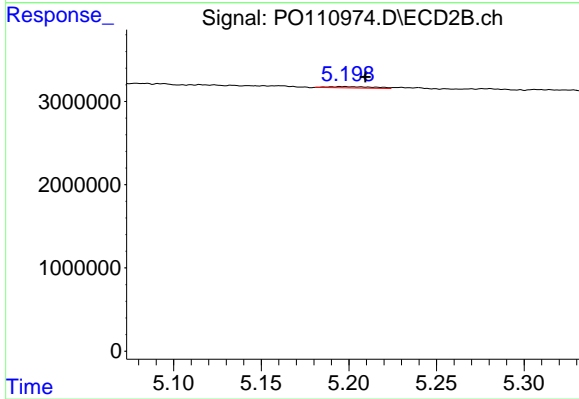
#23 AR-1248-3

R.T.: 5.028 min
 Delta R.T.: -0.010 min
 Response: 62700
 Conc: 0.43 ng/ml



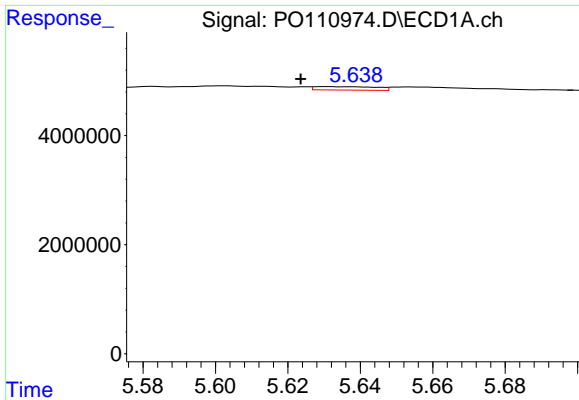
#24 AR-1248-4

R.T.: 5.583 min
 Delta R.T.: 0.000 min
 Response: 268743
 Conc: 0.82 ng/ml



#24 AR-1248-4

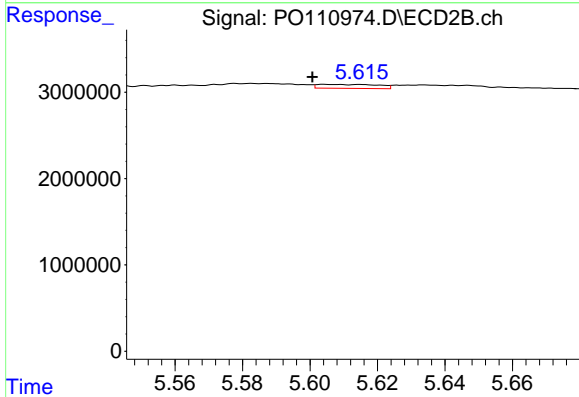
R.T.: 5.197 min
 Delta R.T.: -0.012 min
 Response: 296242
 Conc: 1.77 ng/ml



#25 AR-1248-5

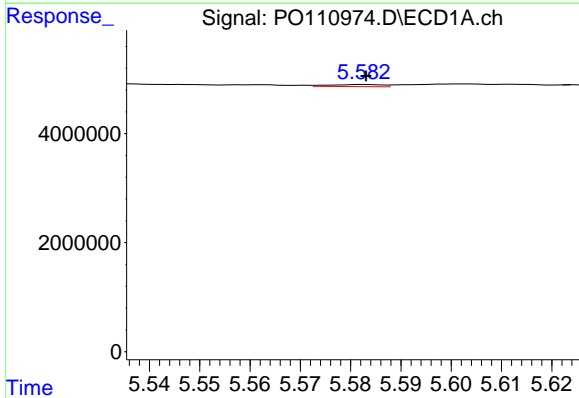
R.T.: 5.631 min
 Delta R.T.: 0.007 min
 Response: 757556
 Conc: 3.25 ng/ml

Instrument :
 ECD_O
 ClientSampleId :
 BC247637-1-2



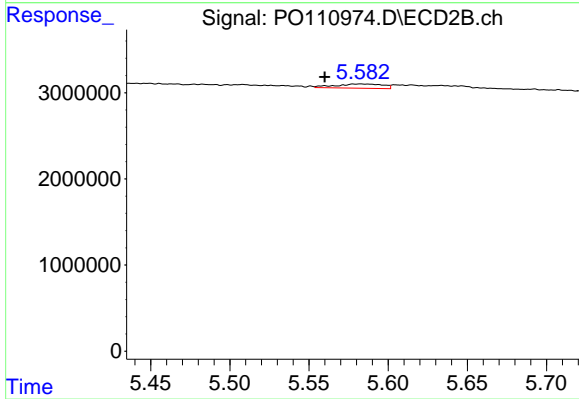
#25 AR-1248-5

R.T.: 5.605 min
 Delta R.T.: 0.004 min
 Response: 572603
 Conc: 3.41 ng/ml



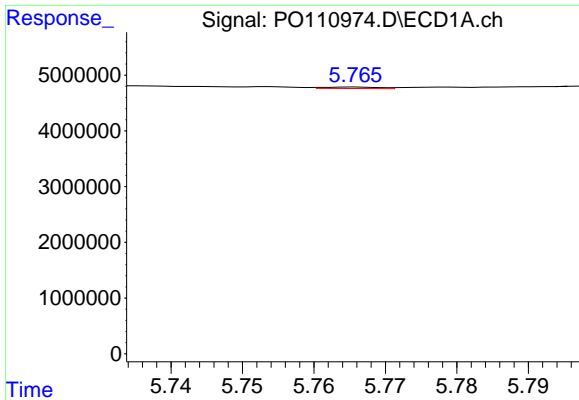
#26 AR-1254-1

R.T.: 5.583 min
 Delta R.T.: 0.000 min
 Response: 268743
 Conc: 0.80 ng/ml



#26 AR-1254-1

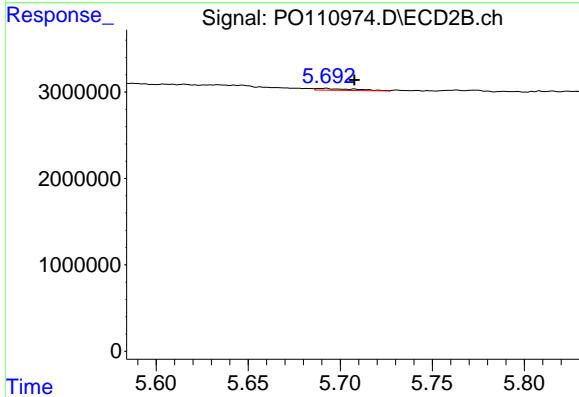
R.T.: 5.583 min
 Delta R.T.: 0.023 min
 Response: 1012196
 Conc: 4.03 ng/ml



#27 AR-1254-2

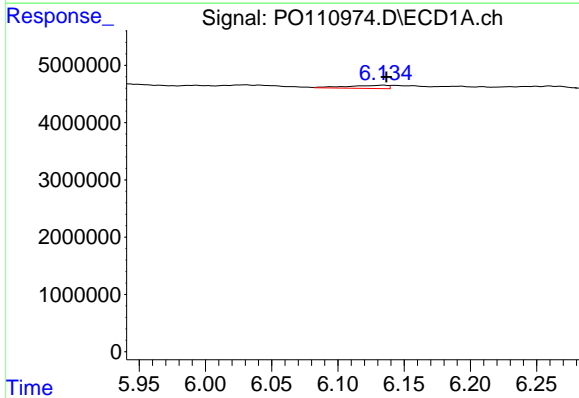
R.T.: 5.766 min
 Delta R.T.: 0.034 min
 Response: 140491
 Conc: 0.49 ng/ml

Instrument :
 ECD_O
 ClientSampleId :
 BC247637-1-2



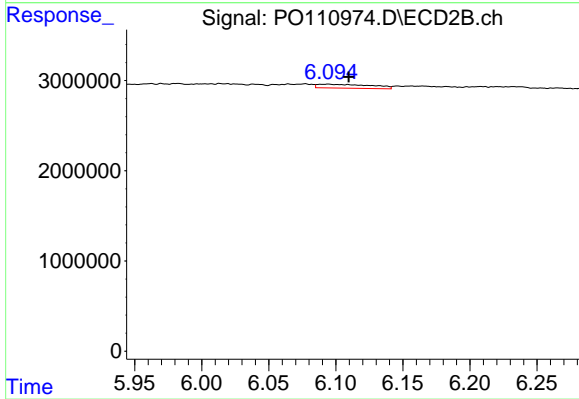
#27 AR-1254-2

R.T.: 5.692 min
 Delta R.T.: -0.016 min
 Response: 302760
 Conc: 1.39 ng/ml



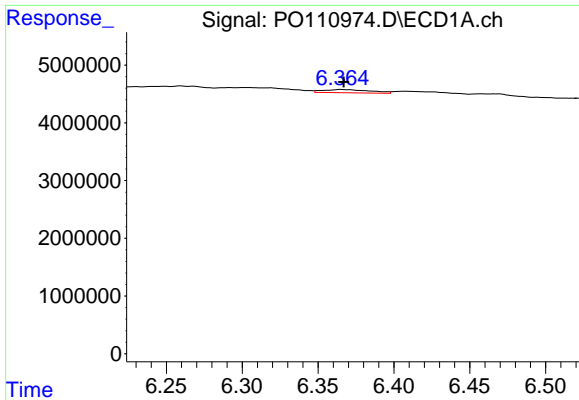
#28 AR-1254-3

R.T.: 6.135 min
 Delta R.T.: -0.002 min
 Response: 1173980
 Conc: 2.57 ng/ml



#28 AR-1254-3

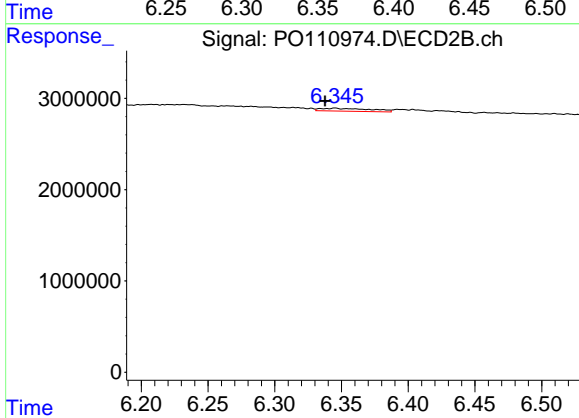
R.T.: 6.094 min
 Delta R.T.: -0.015 min
 Response: 1210595
 Conc: 3.62 ng/ml



#29 AR-1254-4

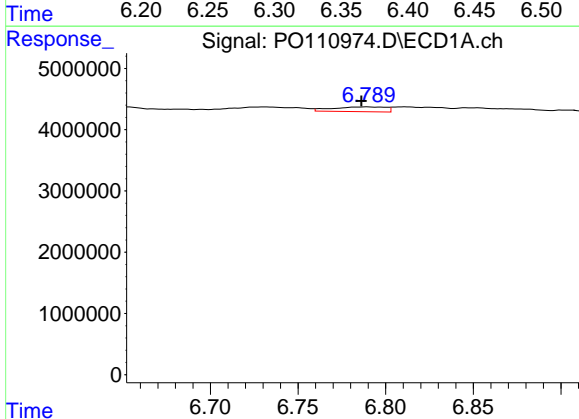
R.T.: 6.365 min
 Delta R.T.: -0.002 min
 Response: 1207476
 Conc: 3.96 ng/ml

Instrument :
 ECD_O
 ClientSampleId :
 BC247637-1-2



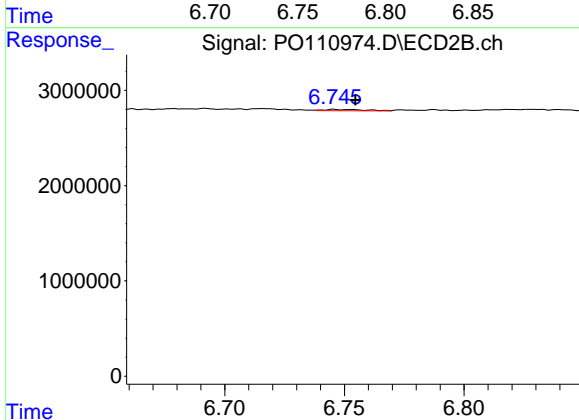
#29 AR-1254-4

R.T.: 6.345 min
 Delta R.T.: 0.008 min
 Response: 842527
 Conc: 4.34 ng/ml



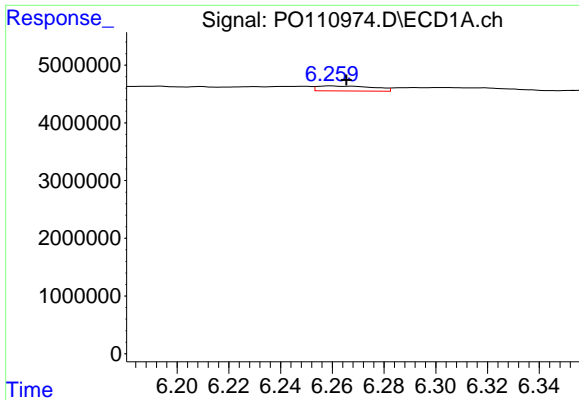
#30 AR-1254-5

R.T.: 6.789 min
 Delta R.T.: 0.003 min
 Response: 1672205
 Conc: 3.96 ng/ml



#30 AR-1254-5

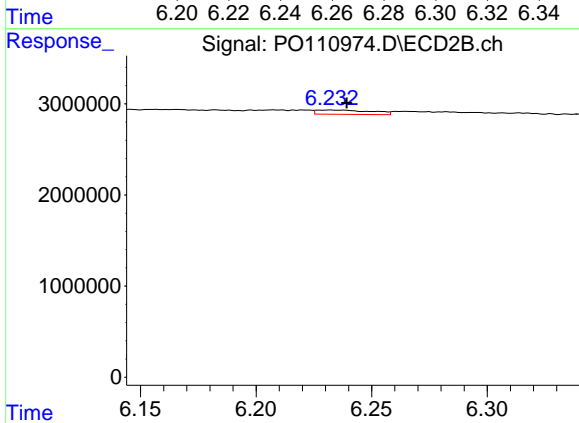
R.T.: 6.746 min
 Delta R.T.: -0.009 min
 Response: 174258
 Conc: 0.65 ng/ml



#31 AR-1260-1

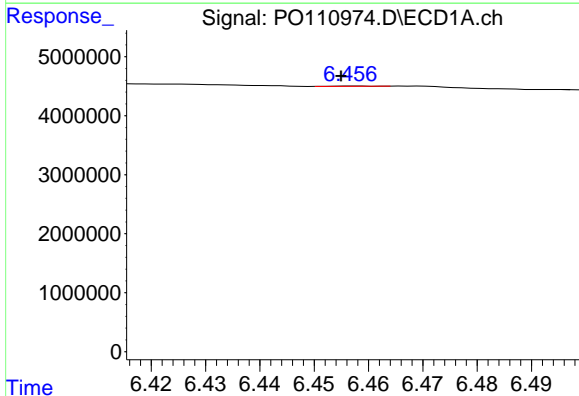
R.T.: 6.259 min
 Delta R.T.: -0.006 min
 Response: 1299978
 Conc: 3.91 ng/ml

Instrument :
 ECD_O
 ClientSampleId :
 BC247637-1-2



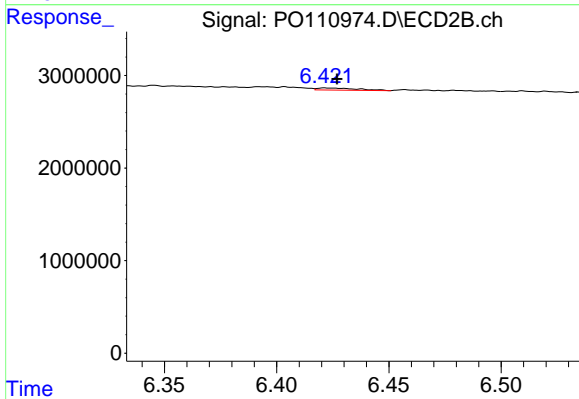
#31 AR-1260-1

R.T.: 6.232 min
 Delta R.T.: -0.007 min
 Response: 775510
 Conc: 3.51 ng/ml



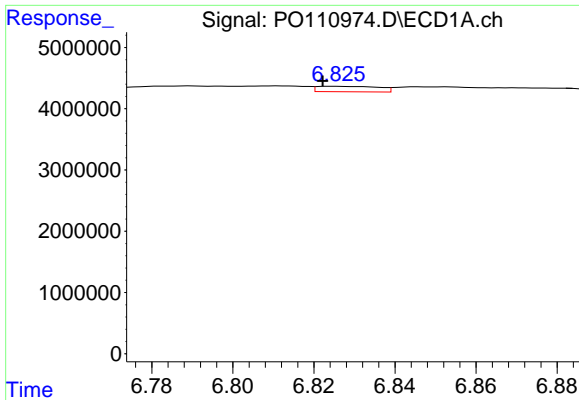
#32 AR-1260-2

R.T.: 6.457 min
 Delta R.T.: 0.002 min
 Response: 22480
 Conc: 0.05 ng/ml



#32 AR-1260-2

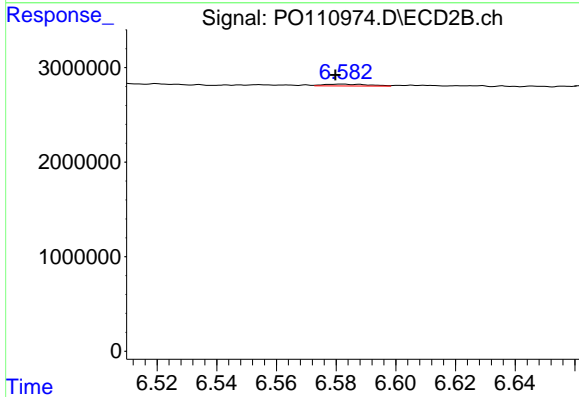
R.T.: 6.422 min
 Delta R.T.: -0.005 min
 Response: 285423
 Conc: 1.11 ng/ml



#33 AR-1260-3

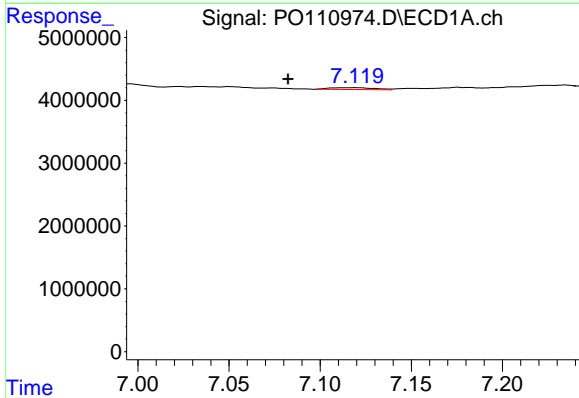
R.T.: 6.825 min
 Delta R.T.: 0.003 min
 Response: 933294
 Conc: 2.65 ng/ml

Instrument :
 ECD_O
 ClientSampleId :
 BC247637-1-2



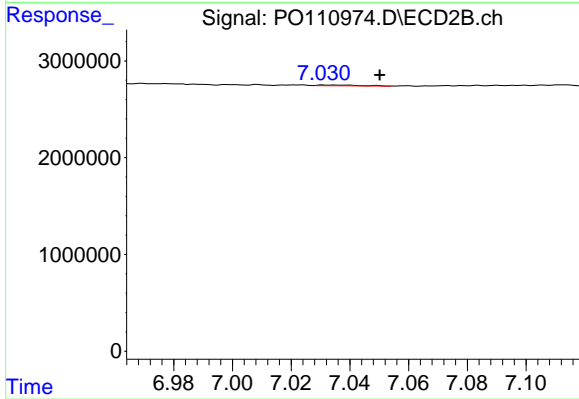
#33 AR-1260-3

R.T.: 6.582 min
 Delta R.T.: 0.002 min
 Response: 193982
 Conc: 0.83 ng/ml



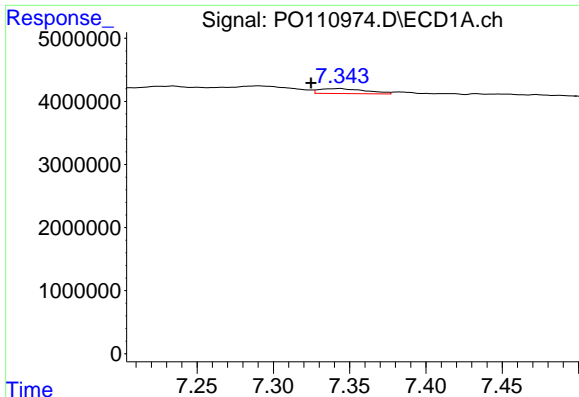
#34 AR-1260-4

R.T.: 7.119 min
 Delta R.T.: 0.037 min
 Response: 504168
 Conc: 1.66 ng/ml



#34 AR-1260-4

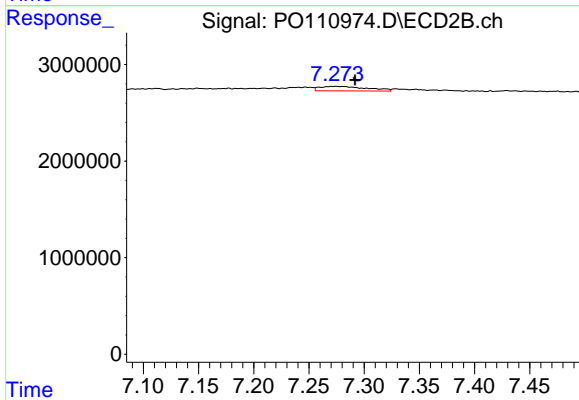
R.T.: 7.031 min
 Delta R.T.: -0.019 min
 Response: 73780
 Conc: 0.41 ng/ml



#35 AR-1260-5

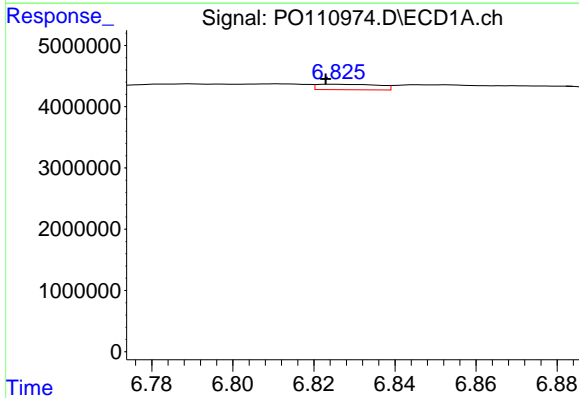
R.T.: 7.344 min
 Delta R.T.: 0.019 min
 Response: 1685557
 Conc: 2.30 ng/ml

Instrument :
 ECD_O
 ClientSampleId :
 BC247637-1-2



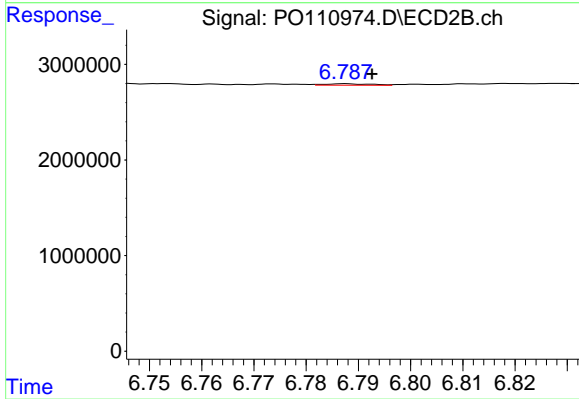
#35 AR-1260-5

R.T.: 7.274 min
 Delta R.T.: -0.018 min
 Response: 1365728
 Conc: 3.47 ng/ml



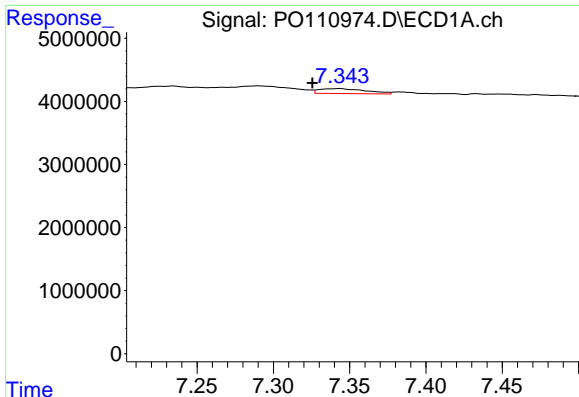
#36 AR-1262-1

R.T.: 6.825 min
 Delta R.T.: 0.002 min
 Response: 933294
 Conc: 2.03 ng/ml



#36 AR-1262-1

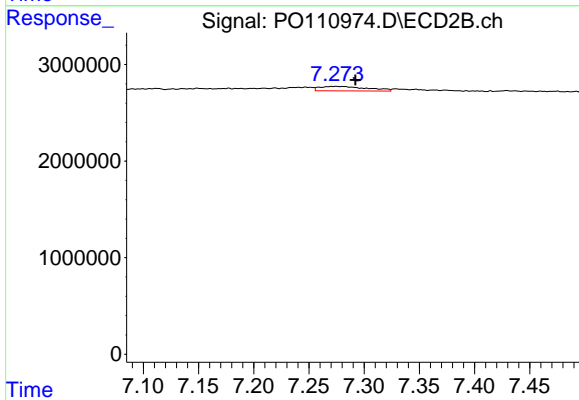
R.T.: 6.787 min
 Delta R.T.: -0.005 min
 Response: 98715
 Conc: 0.35 ng/ml



#37 AR-1262-2

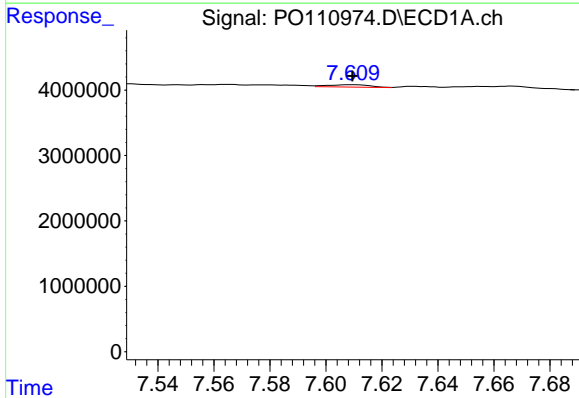
R.T.: 7.344 min
 Delta R.T.: 0.018 min
 Response: 1685557
 Conc: 2.14 ng/ml

Instrument :
 ECD_O
 ClientSampleId :
 BC247637-1-2



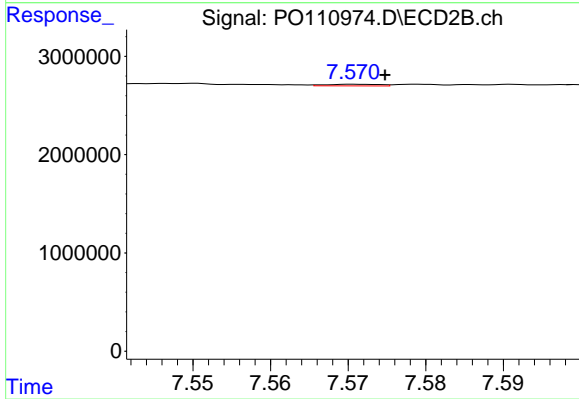
#37 AR-1262-2

R.T.: 7.274 min
 Delta R.T.: -0.018 min
 Response: 1365728
 Conc: 3.11 ng/ml



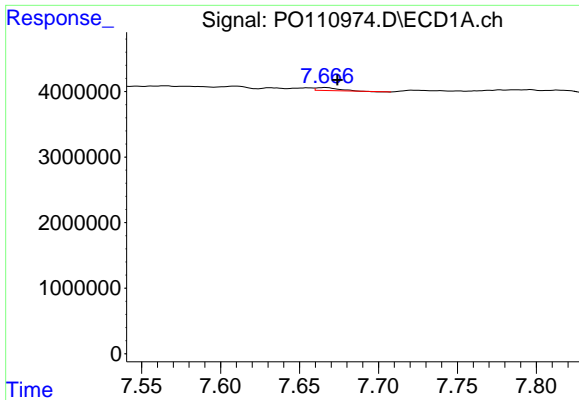
#38 AR-1262-3

R.T.: 7.609 min
 Delta R.T.: 0.000 min
 Response: 360436
 Conc: 1.08 ng/ml



#38 AR-1262-3

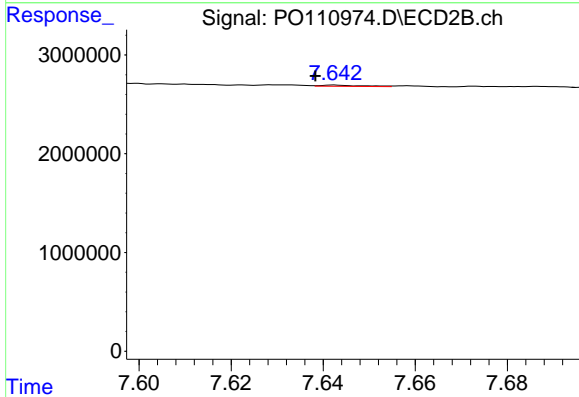
R.T.: 7.571 min
 Delta R.T.: -0.003 min
 Response: 79223
 Conc: 0.49 ng/ml



#39 AR-1262-4

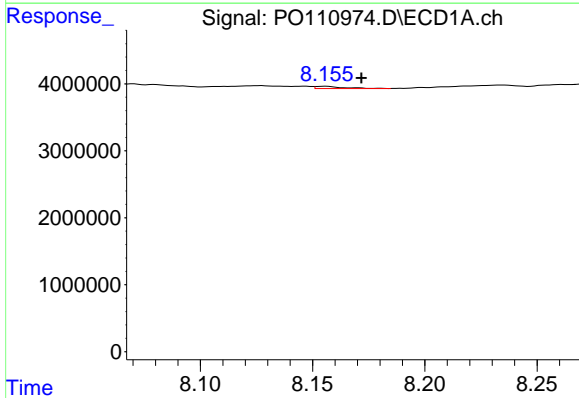
R.T.: 7.666 min
 Delta R.T.: -0.008 min
 Response: 440546
 Conc: 0.76 ng/ml

Instrument :
 ECD_O
 ClientSampleId :
 BC247637-1-2



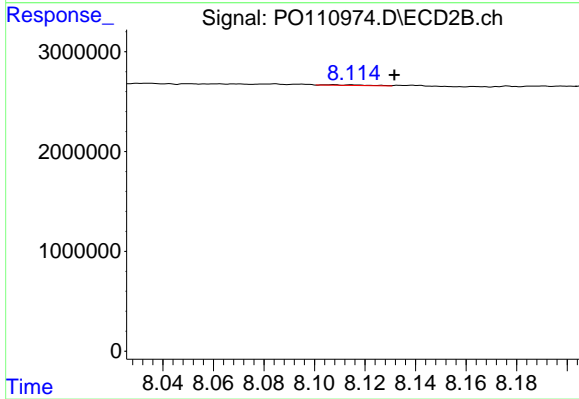
#39 AR-1262-4

R.T.: 7.643 min
 Delta R.T.: 0.004 min
 Response: 78028
 Conc: 0.27 ng/ml



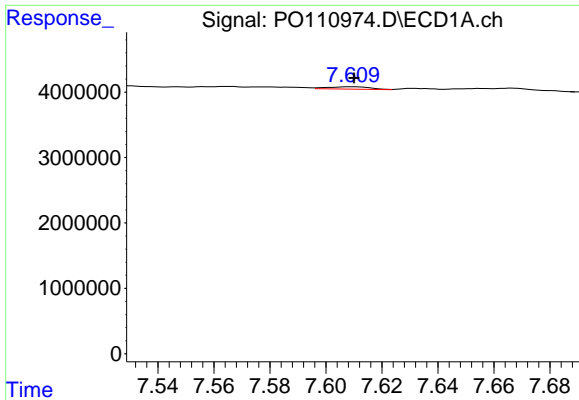
#40 AR-1262-5

R.T.: 8.156 min
 Delta R.T.: -0.016 min
 Response: 283156
 Conc: 1.06 ng/ml



#40 AR-1262-5

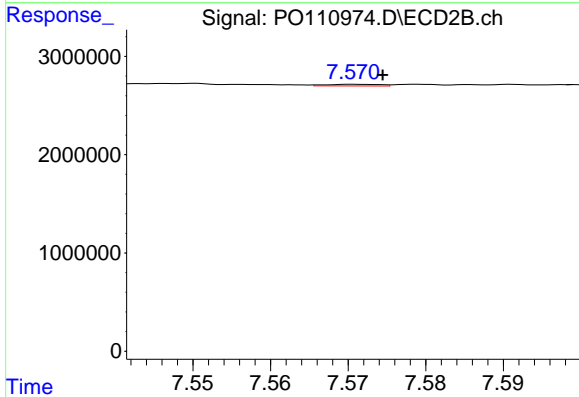
R.T.: 8.107 min
 Delta R.T.: -0.024 min
 Response: 73577
 Conc: 0.75 ng/ml



#41 AR-1268-1

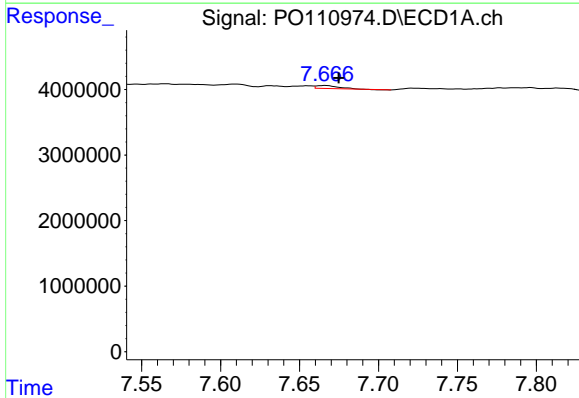
R.T.: 7.609 min
 Delta R.T.: 0.000 min
 Response: 360436
 Conc: 0.41 ng/ml

Instrument :
 ECD_O
 ClientSampleId :
 BC247637-1-2



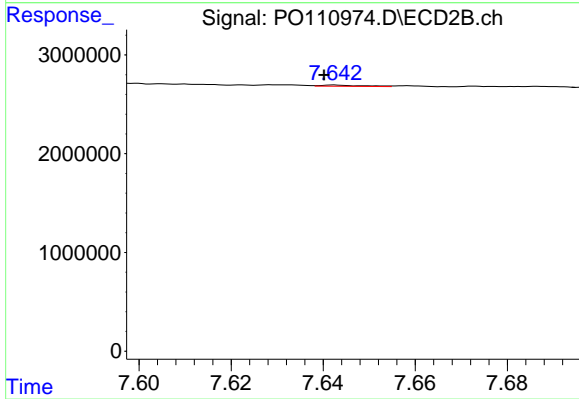
#41 AR-1268-1

R.T.: 7.571 min
 Delta R.T.: -0.003 min
 Response: 79223
 Conc: 0.18 ng/ml



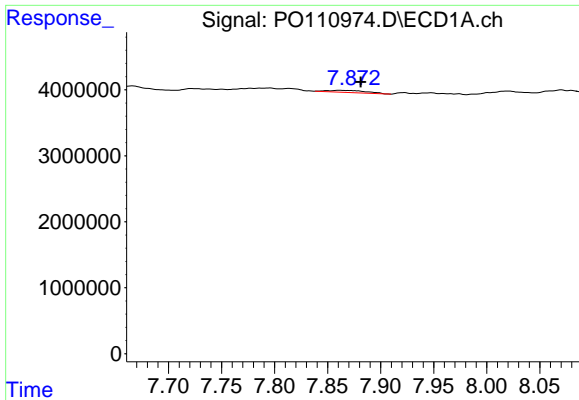
#42 AR-1268-2

R.T.: 7.666 min
 Delta R.T.: -0.008 min
 Response: 440546
 Conc: 0.55 ng/ml



#42 AR-1268-2

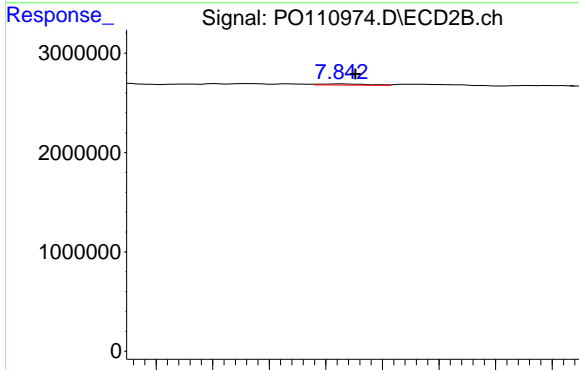
R.T.: 7.643 min
 Delta R.T.: 0.002 min
 Response: 78028
 Conc: 0.20 ng/ml



#43 AR-1268-3

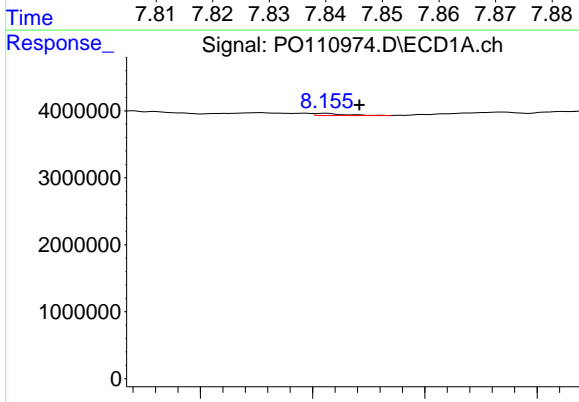
R.T.: 7.861 min
 Delta R.T.: -0.020 min
 Response: 764897
 Conc: 1.11 ng/ml

Instrument :
 ECD_O
 ClientSampleId :
 BC247637-1-2



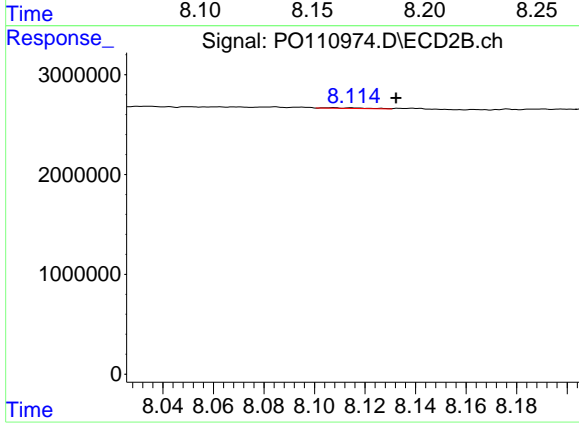
#43 AR-1268-3

R.T.: 7.843 min
 Delta R.T.: -0.003 min
 Response: 69524
 Conc: 0.24 ng/ml



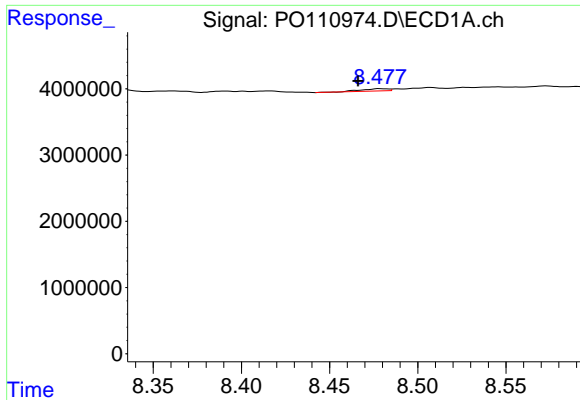
#44 AR-1268-4

R.T.: 8.156 min
 Delta R.T.: -0.015 min
 Response: 283156
 Conc: 1.02 ng/ml



#44 AR-1268-4

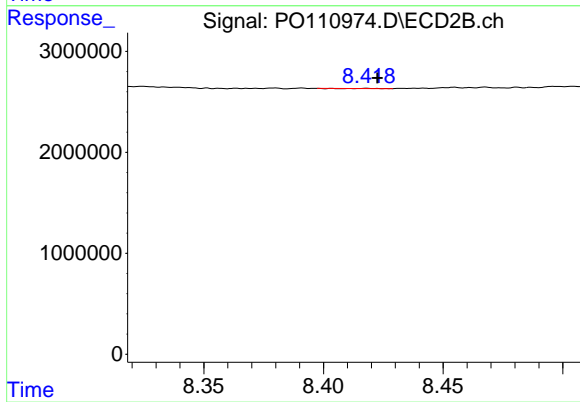
R.T.: 8.107 min
 Delta R.T.: -0.025 min
 Response: 73577
 Conc: 0.71 ng/ml



#45 AR-1268-5

R.T.: 8.479 min
 Delta R.T.: 0.013 min
 Response: 357889
 Conc: 0.18 ng/ml

Instrument :
 ECD_O
 ClientSampleId :
 BC247637-1-2



#45 AR-1268-5

R.T.: 8.418 min
 Delta R.T.: -0.004 min
 Response: 828
 Conc: 0.00 ng/ml