

Data Path : Z:\pestpcbsrv\HPCHEM1\ECD_0\Data\P0050825\
 Data File : PO110975.D
 Signal(s) : Signal #1: ECD1A.ch Signal #2: ECD2B.ch
 Acq On : 09 May 2025 01:19
 Operator : YP/AJ
 Sample : AR1660CCC500
 Misc :
 ALS Vial : 3 Sample Multiplier: 1

Instrument :
 ECD_0
 ClientSampleId :
 AR1660CCC500

Integration File signal 1: autoint1.e
 Integration File signal 2: autoint2.e
 Quant Time: May 09 01:56:08 2025
 Quant Method : Z:\pestpcbsrv\HPCHEM1\ECD_0\methods\P0050225.M
 Quant Title : GC EXTRACTABLES
 QLast Update : Fri May 02 23:47:49 2025
 Response via : Initial Calibration
 Integrator: ChemStation

Volume Inj. : 2 µl
 Signal #1 Phase : ZB-MR1 Signal #2 Phase: ZB-MR2
 Signal #1 Info : 30Mx0.32mmx 0.50µ Signal #2 Info : 30M x 0.32mm x 0.25µm

Compound	RT#1	RT#2	Resp#1	Resp#2	ng/ml	ng/ml

System Monitoring Compounds						
1) SA Tetrachlo...	3.684	3.680	280.8E6	272.0E6	49.080	56.161
2) SA Decachlor...	8.726	8.675	319.7E6	114.3E6	52.394	67.720 #
Target Compounds						
3) L1 AR-1016-1	4.774	4.759	95966217	83649133	434.208	526.501
4) L1 AR-1016-2	4.793	4.778	137.0E6	120.8E6	441.834	528.662
5) L1 AR-1016-3	4.849	4.954	95963140	64782810	419.599	531.285 #
6) L1 AR-1016-4	4.970	4.996	75526079	48639459	451.730	482.721
7) L1 AR-1016-5	5.227	5.208	92585262	78448112	519.883	597.005
8) L2 AR-1221-1	3.895	3.889	9921133	9194393	113.947	138.125
9) L2 AR-1221-2	3.983	3.976	15202915	13547222	224.525	263.916
10) L2 AR-1221-3	4.059	4.051	53543224	48652617	270.734	317.913
11) L3 AR-1232-1	4.059	4.051	53543224	48652617	348.625	414.198
12) L3 AR-1232-2	4.552	4.778	72800496	120.8E6	883.707	1050.420
13) L3 AR-1232-3	4.793	4.954	137.0E6	64782810	861.456	1074.585
14) L3 AR-1232-4	4.970	5.038	75526079	64504307	897.297	1157.806 #
15) L3 AR-1232-5	5.012	5.208	53593214	78448112	910.329	1332.683 #
16) L4 AR-1242-1	4.774	4.759	95966217	83649133	521.761	632.141
17) L4 AR-1242-2	4.793	4.778	137.0E6	120.8E6	531.997	635.726
18) L4 AR-1242-3	4.849	4.954	95963140	64782810	526.952	639.382
19) L4 AR-1242-4	4.970	5.038	75526079	64504307	540.812	621.966
20) L4 AR-1242-5	5.622	5.559	29919204	74672478	191.919	589.990 #
21) L5 AR-1248-1	4.774	4.759	95966217	83649133	730.546	867.955
22) L5 AR-1248-2	5.012	4.996	53593214	48639459	305.840	359.967
23) L5 AR-1248-3	5.227	5.038	92585262	64504307	419.949	444.419
24) L5 AR-1248-4	5.582	5.208	87779060	78448112	267.852	468.302 #
25) L5 AR-1248-5	5.622	5.599	29919204	24215936	128.162	144.247
26) L6 AR-1254-1	5.582	5.559	87779060	74672478	260.031	297.472
27) L6 AR-1254-2	5.730	5.707	65602249	54706854	228.022	250.735
28) L6 AR-1254-3	6.151	6.125	109.5E6	87104209	239.364	260.628
29) L6 AR-1254-4	6.365	6.337	19149712	12842392	62.822	66.143
30) L6 AR-1254-5	6.784	6.753	179.9E6	128.9E6	426.414	480.438
31) L7 AR-1260-1	6.267	6.239	140.4E6	112.1E6	422.110	507.809
32) L7 AR-1260-2	6.457	6.427	171.2E6	128.5E6	412.628	499.551
33) L7 AR-1260-3	6.823	6.579	148.1E6	116.1E6	420.424	497.995
34) L7 AR-1260-4	7.083	7.050	125.4E6	86875065	412.191	477.084
35) L7 AR-1260-5	7.326	7.291	296.6E6	185.5E6	403.819	471.808
36) L8 AR-1262-1	6.823	6.792	148.1E6	102.9E6	321.665	364.374
37) L8 AR-1262-2	7.326	7.291	296.6E6	185.5E6	377.064	422.282
38) L8 AR-1262-3	7.610	7.574	73326208	41688916	219.489	256.765
39) L8 AR-1262-4	7.673	7.637	207.3E6	118.5E6	358.290	407.013
40) L8 AR-1262-5	8.171	8.130	78676115	33174525	294.894	336.480
41) L9 AR-1268-1	7.610	7.574	73326208	41688916	82.404	96.736

Data Path : Z:\pestpcbsrv\HPCHEM1\ECD_0\Data\P0050825\
 Data File : P0110975.D
 Signal(s) : Signal #1: ECD1A.ch Signal #2: ECD2B.ch
 Acq On : 09 May 2025 01:19
 Operator : YP/AJ
 Sample : AR1660CCC500
 Misc :
 ALS Vial : 3 Sample Multiplier: 1

Instrument :
 ECD_0
 ClientSampleId :
 AR1660CCC500

Integration File signal 1: autoint1.e
 Integration File signal 2: autoint2.e
 Quant Time: May 09 01:56:08 2025
 Quant Method : Z:\pestpcbsrv\HPCHEM1\ECD_0\methods\P0050225.M
 Quant Title : GC EXTRACTABLES
 QLast Update : Fri May 02 23:47:49 2025
 Response via : Initial Calibration
 Integrator: ChemStation

Volume Inj. : 2 µl
 Signal #1 Phase : ZB-MR1 Signal #2 Phase: ZB-MR2
 Signal #1 Info : 30Mx0.32mmx 0.50µ Signal #2 Info : 30M x 0.32mm x 0.25µm

	Compound	RT#1	RT#2	Resp#1	Resp#2	ng/ml	ng/ml
42)	L9 AR-1268-2	7.673	7.637	207.3E6	118.5E6	258.300	308.677
43)	L9 AR-1268-3	7.882	7.843	4433748	2492708	6.459	8.776 #
44)	L9 AR-1268-4	8.171	8.130	78676115	33174525	283.003	318.611
45)	L9 AR-1268-5	8.467	8.420	23816912	8887971	11.654	14.644 #

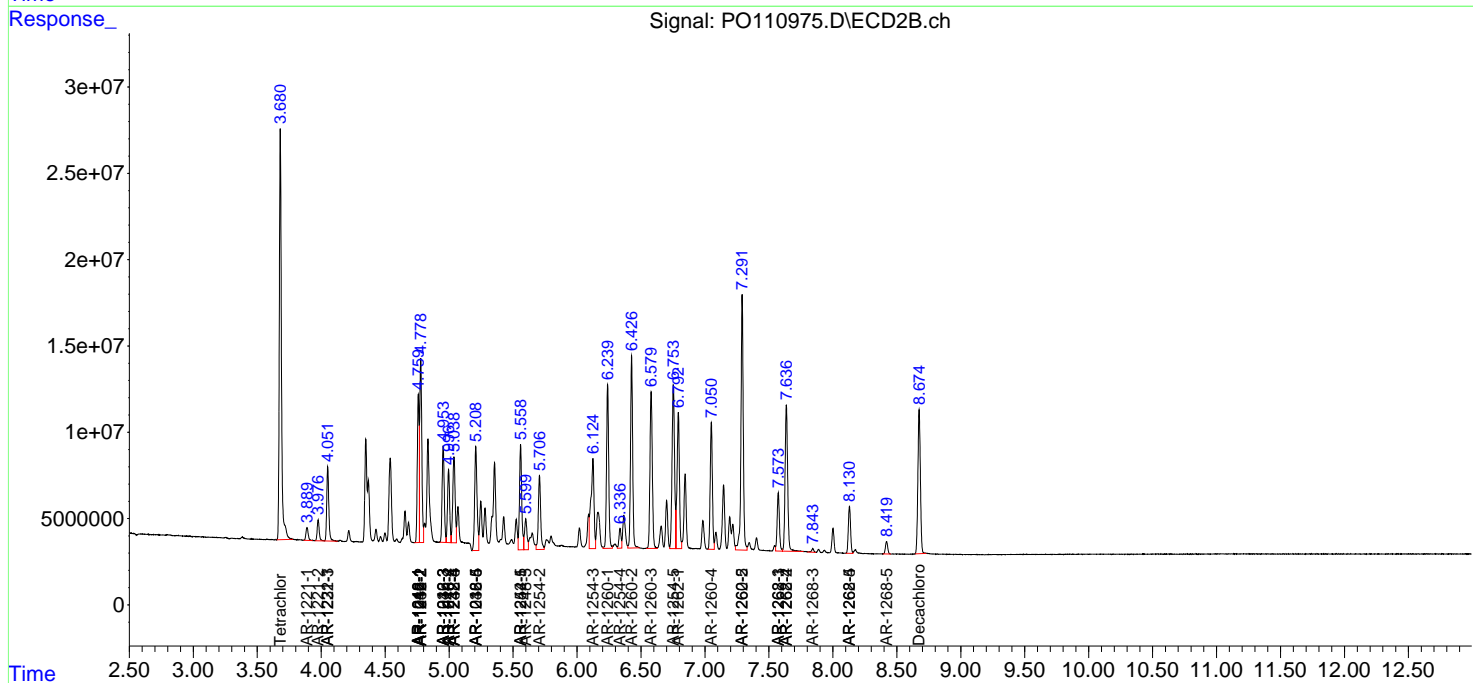
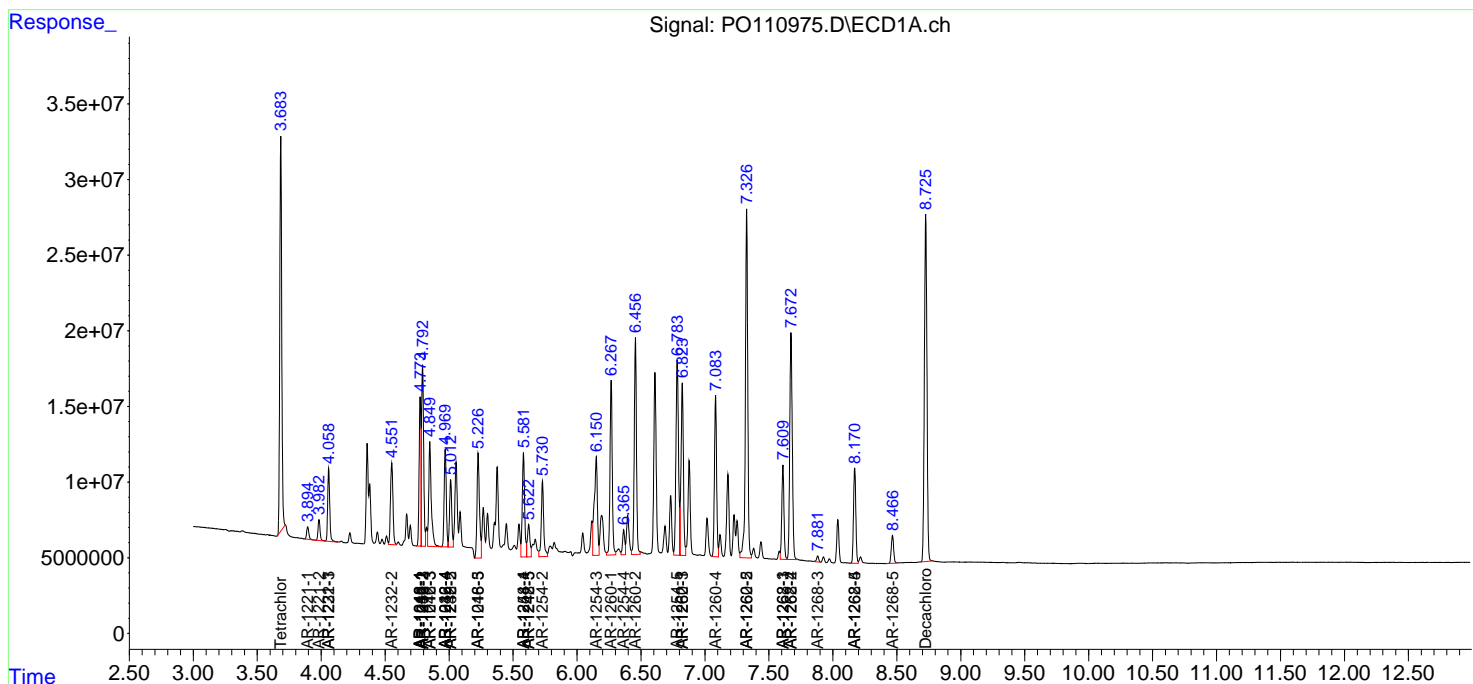
(f)=RT Delta > 1/2 Window (#)=Amounts differ by > 25% (m)=manual int.

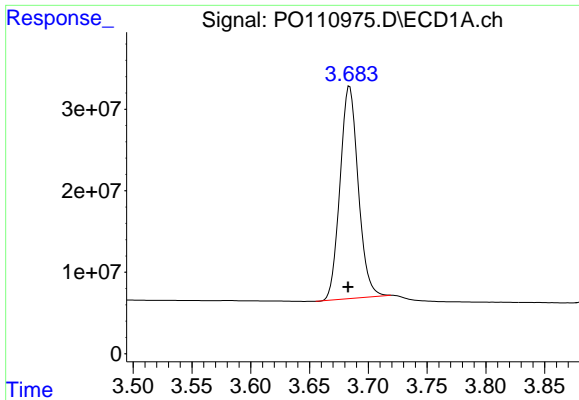
Data Path : Z:\pestpcbsrv\HPCHEM1\ECD_O\Data\PO050825\
 Data File : PO110975.D
 Signal(s) : Signal #1: ECD1A.ch Signal #2: ECD2B.ch
 Acq On : 09 May 2025 01:19
 Operator : YP/AJ
 Sample : AR1660CCC500
 Misc :
 ALS Vial : 3 Sample Multiplier: 1

Instrument :
 ECD_O
 ClientSampleId :
 AR1660CCC500

Integration File signal 1: autoint1.e
 Integration File signal 2: autoint2.e
 Quant Time: May 09 01:56:08 2025
 Quant Method : Z:\pestpcbsrv\HPCHEM1\ECD_O\methods\PO050225.M
 Quant Title : GC EXTRACTABLES
 QLast Update : Fri May 02 23:47:49 2025
 Response via : Initial Calibration
 Integrator: ChemStation

Volume Inj. : 2 µl
 Signal #1 Phase : ZB-MR1 Signal #2 Phase: ZB-MR2
 Signal #1 Info : 30Mx0.32mmx 0.50µ Signal #2 Info : 30M x 0.32mm x 0.25µm

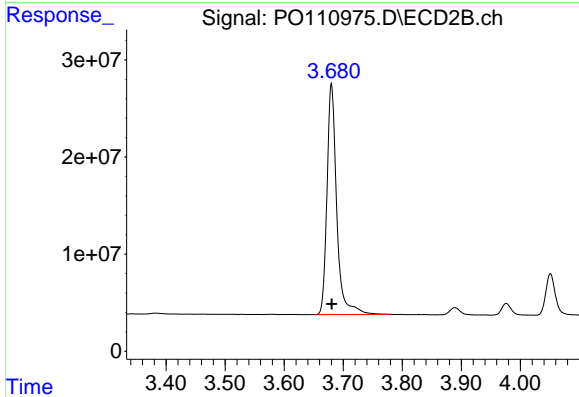




#1 Tetrachloro-m-xylene

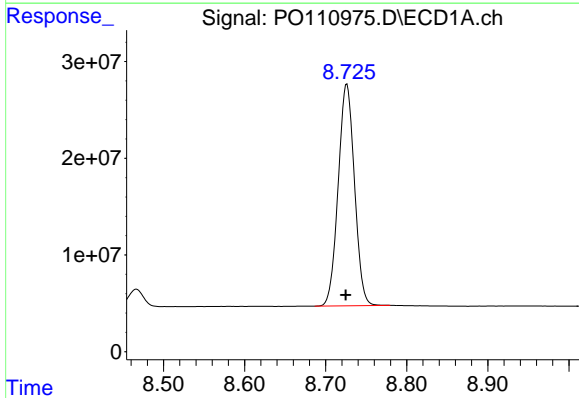
R.T.: 3.684 min
 Delta R.T.: 0.001 min
 Response: 280776105
 Conc: 49.08 ng/ml

Instrument :
 ECD_O
 ClientSampleId :
 AR1660CCC500



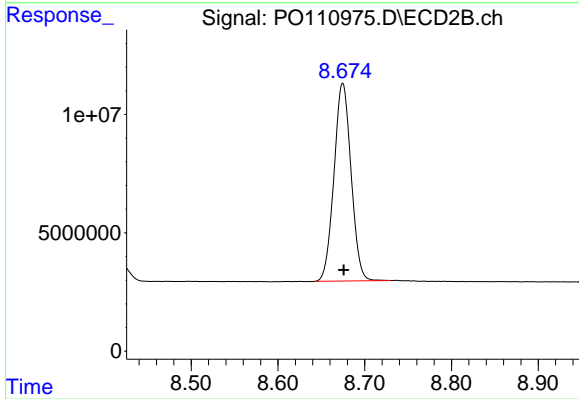
#1 Tetrachloro-m-xylene

R.T.: 3.680 min
 Delta R.T.: 0.000 min
 Response: 271994679
 Conc: 56.16 ng/ml



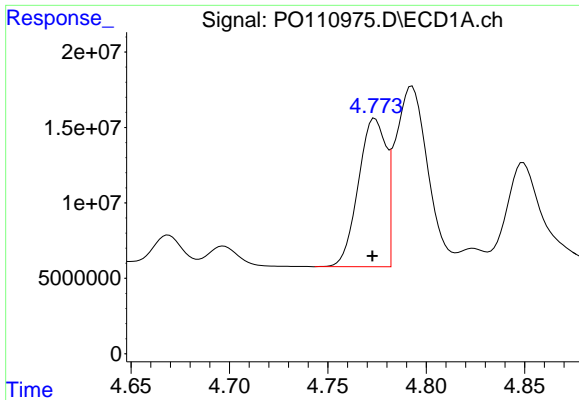
#2 Decachlorobiphenyl

R.T.: 8.726 min
 Delta R.T.: 0.001 min
 Response: 319734941
 Conc: 52.39 ng/ml



#2 Decachlorobiphenyl

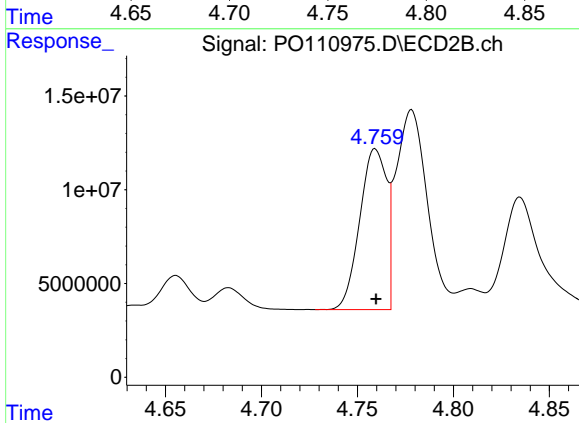
R.T.: 8.675 min
 Delta R.T.: -0.001 min
 Response: 114261699
 Conc: 67.72 ng/ml



#3 AR-1016-1

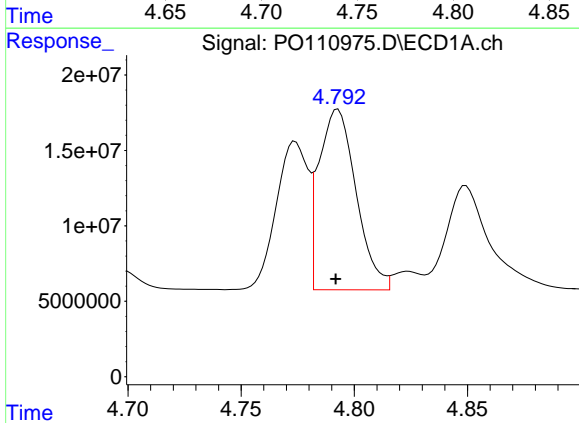
R.T.: 4.774 min
 Delta R.T.: 0.001 min
 Response: 95966217
 Conc: 434.21 ng/ml

Instrument :
 ECD_O
 ClientSampleId :
 AR1660CCC500



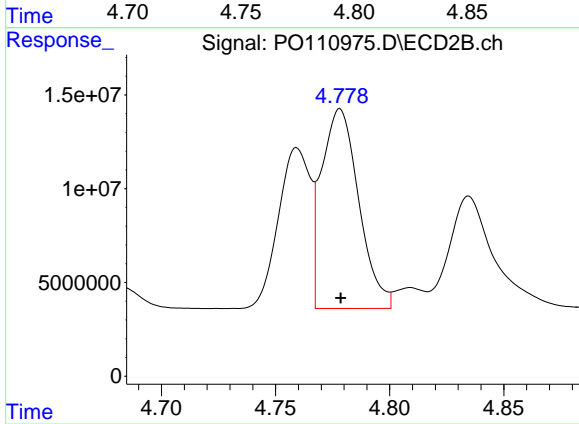
#3 AR-1016-1

R.T.: 4.759 min
 Delta R.T.: 0.000 min
 Response: 83649133
 Conc: 526.50 ng/ml



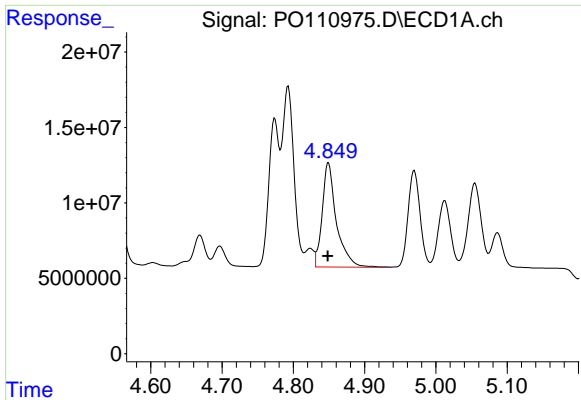
#4 AR-1016-2

R.T.: 4.793 min
 Delta R.T.: 0.000 min
 Response: 137044690
 Conc: 441.83 ng/ml



#4 AR-1016-2

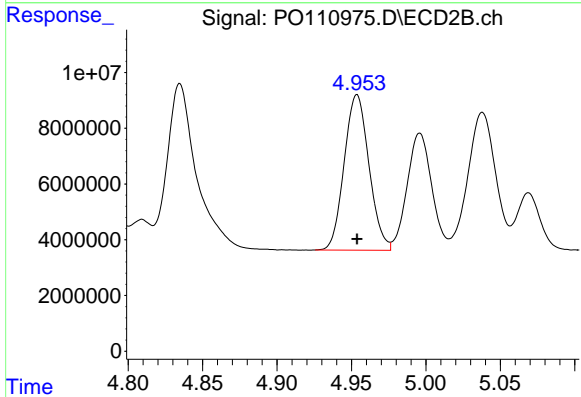
R.T.: 4.778 min
 Delta R.T.: 0.000 min
 Response: 120835055
 Conc: 528.66 ng/ml



#5 AR-1016-3

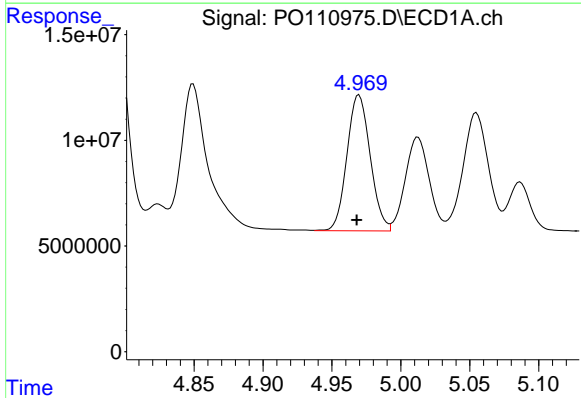
R.T.: 4.849 min
 Delta R.T.: 0.001 min
 Response: 95963140
 Conc: 419.60 ng/ml

Instrument :
 ECD_O
 ClientSampleId :
 AR1660CCC500



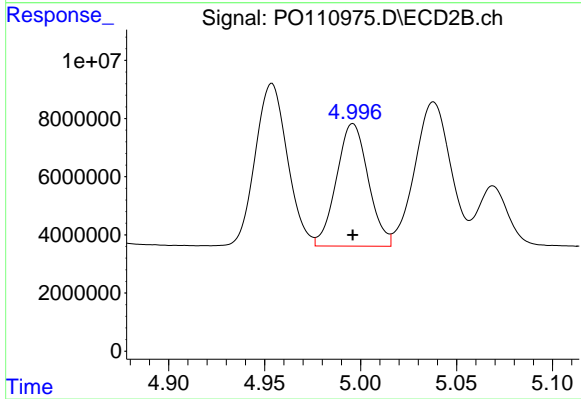
#5 AR-1016-3

R.T.: 4.954 min
 Delta R.T.: 0.000 min
 Response: 64782810
 Conc: 531.28 ng/ml



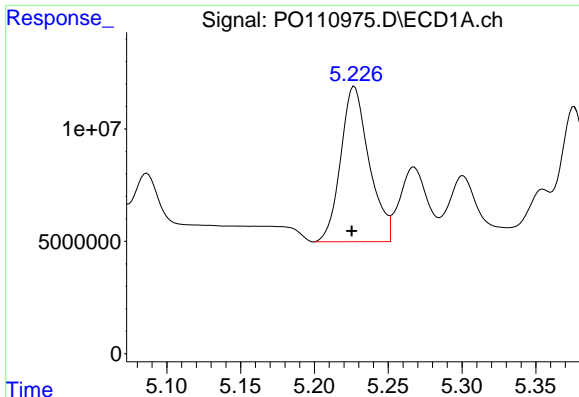
#6 AR-1016-4

R.T.: 4.970 min
 Delta R.T.: 0.002 min
 Response: 75526079
 Conc: 451.73 ng/ml



#6 AR-1016-4

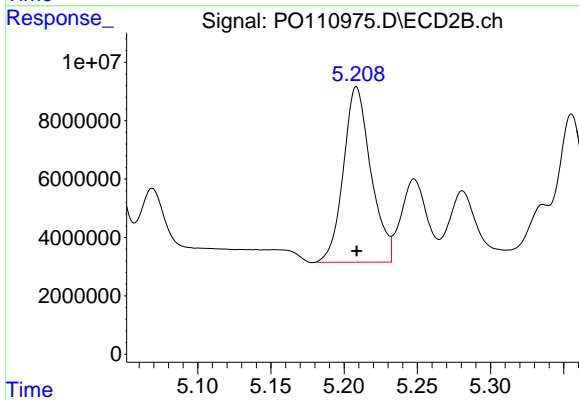
R.T.: 4.996 min
 Delta R.T.: 0.000 min
 Response: 48639459
 Conc: 482.72 ng/ml



#7 AR-1016-5

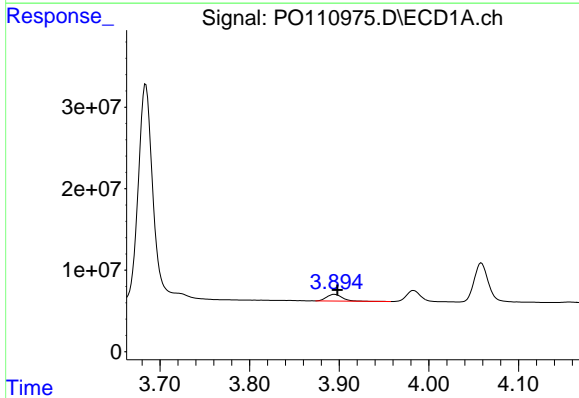
R.T.: 5.227 min
 Delta R.T.: 0.002 min
 Response: 92585262
 Conc: 519.88 ng/ml

Instrument :
 ECD_O
 ClientSampleId :
 AR1660CCC500



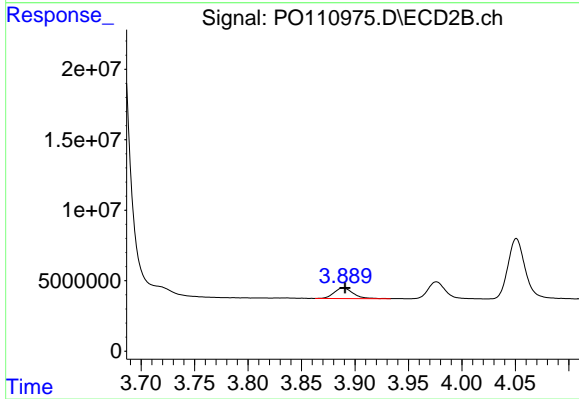
#7 AR-1016-5

R.T.: 5.208 min
 Delta R.T.: 0.000 min
 Response: 78448112
 Conc: 597.01 ng/ml



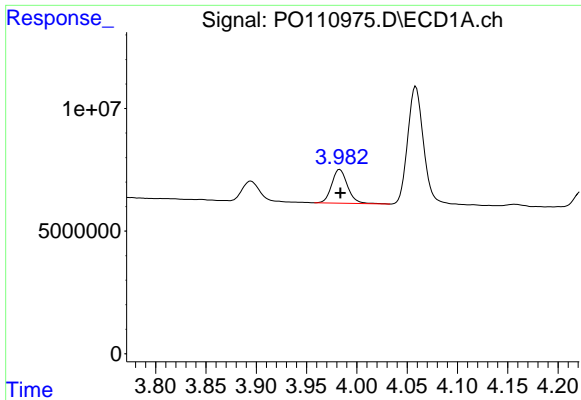
#8 AR-1221-1

R.T.: 3.895 min
 Delta R.T.: -0.003 min
 Response: 9921133
 Conc: 113.95 ng/ml



#8 AR-1221-1

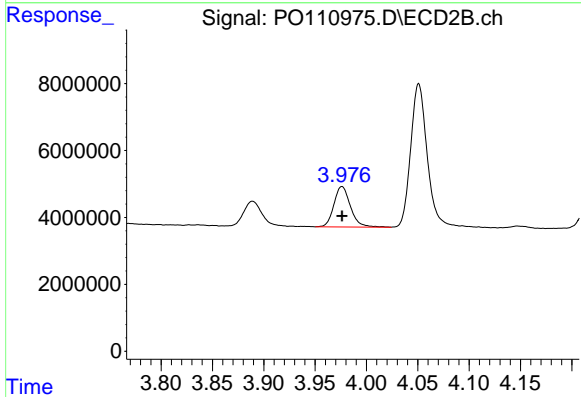
R.T.: 3.889 min
 Delta R.T.: -0.002 min
 Response: 9194393
 Conc: 138.12 ng/ml



#9 AR-1221-2

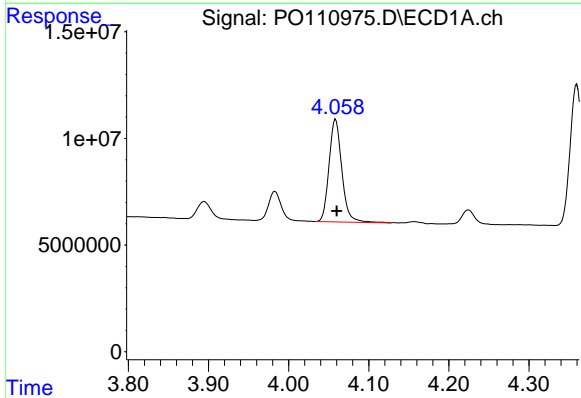
R.T.: 3.983 min
 Delta R.T.: 0.000 min
 Response: 15202915
 Conc: 224.53 ng/ml

Instrument :
 ECD_O
 ClientSampleId :
 AR1660CCC500



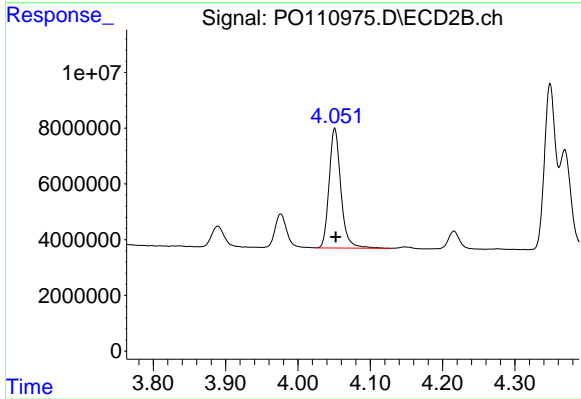
#9 AR-1221-2

R.T.: 3.976 min
 Delta R.T.: 0.000 min
 Response: 13547222
 Conc: 263.92 ng/ml



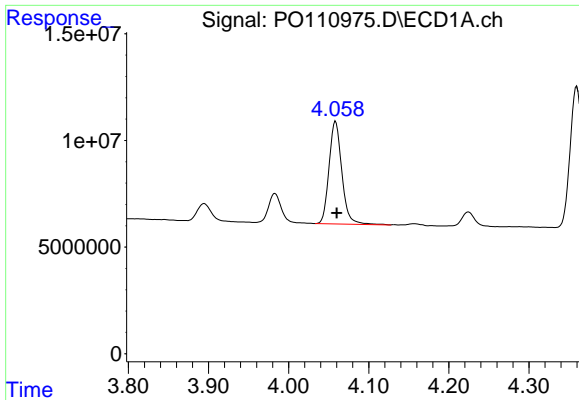
#10 AR-1221-3

R.T.: 4.059 min
 Delta R.T.: -0.002 min
 Response: 53543224
 Conc: 270.73 ng/ml



#10 AR-1221-3

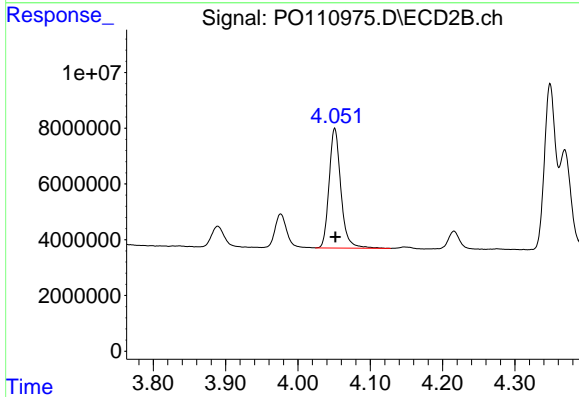
R.T.: 4.051 min
 Delta R.T.: -0.001 min
 Response: 48652617
 Conc: 317.91 ng/ml



#11 AR-1232-1

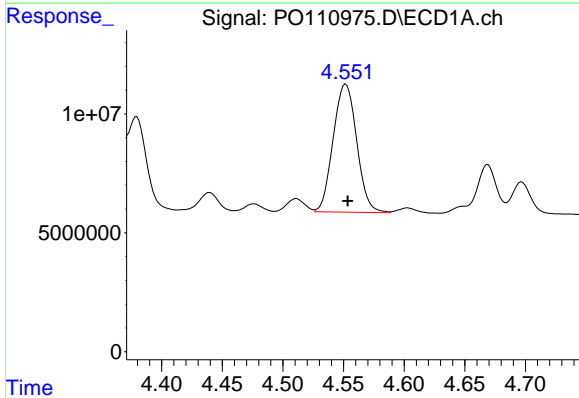
R.T.: 4.059 min
 Delta R.T.: -0.002 min
 Response: 53543224
 Conc: 348.62 ng/ml

Instrument :
 ECD_O
 ClientSampleId :
 AR1660CCC500



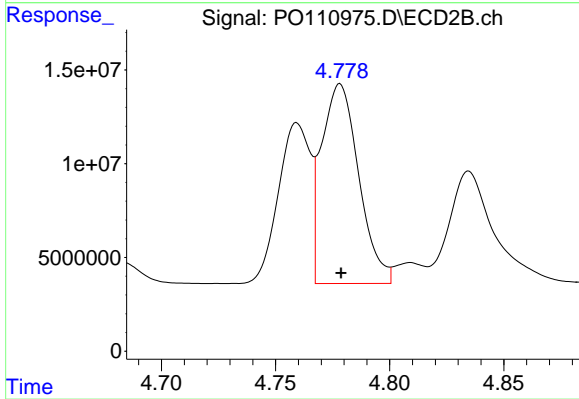
#11 AR-1232-1

R.T.: 4.051 min
 Delta R.T.: 0.000 min
 Response: 48652617
 Conc: 414.20 ng/ml



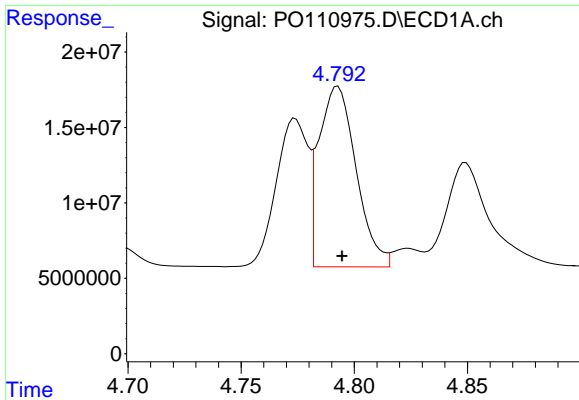
#12 AR-1232-2

R.T.: 4.552 min
 Delta R.T.: -0.002 min
 Response: 72800496
 Conc: 883.71 ng/ml



#12 AR-1232-2

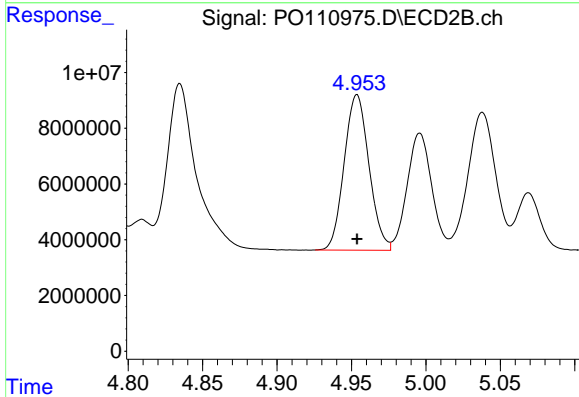
R.T.: 4.778 min
 Delta R.T.: 0.000 min
 Response: 120835055
 Conc: 1050.42 ng/ml



#13 AR-1232-3

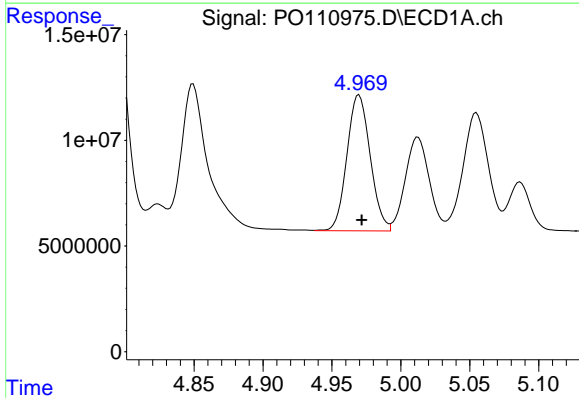
R.T.: 4.793 min
Delta R.T.: -0.002 min
Response: 137044690
Conc: 861.46 ng/ml

Instrument :
ECD_O
ClientSampleId :
AR1660CCC500



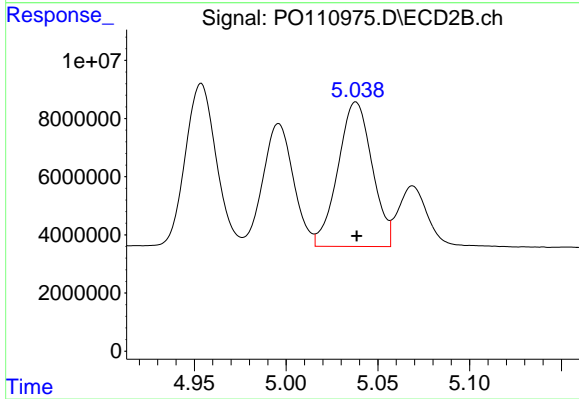
#13 AR-1232-3

R.T.: 4.954 min
Delta R.T.: 0.000 min
Response: 64782810
Conc: 1074.59 ng/ml



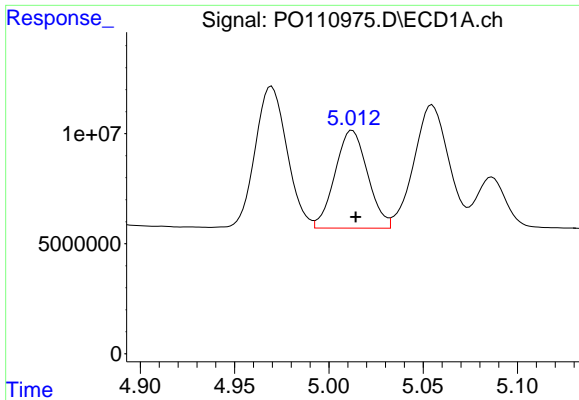
#14 AR-1232-4

R.T.: 4.970 min
Delta R.T.: -0.002 min
Response: 75526079
Conc: 897.30 ng/ml



#14 AR-1232-4

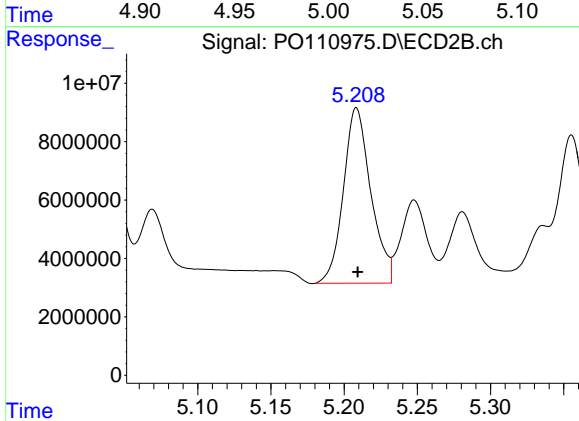
R.T.: 5.038 min
Delta R.T.: 0.000 min
Response: 64504307
Conc: 1157.81 ng/ml



#15 AR-1232-5

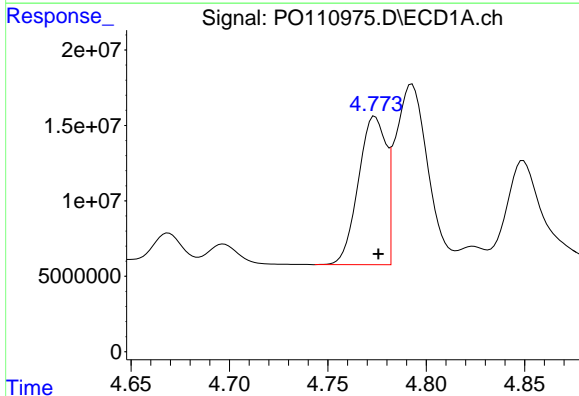
R.T.: 5.012 min
 Delta R.T.: -0.002 min
 Response: 53593214
 Conc: 910.33 ng/ml

Instrument :
 ECD_O
 ClientSampleId :
 AR1660CCC500



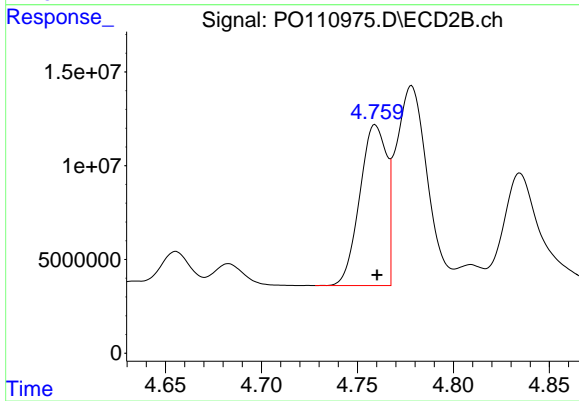
#15 AR-1232-5

R.T.: 5.208 min
 Delta R.T.: 0.000 min
 Response: 78448112
 Conc: 1332.68 ng/ml



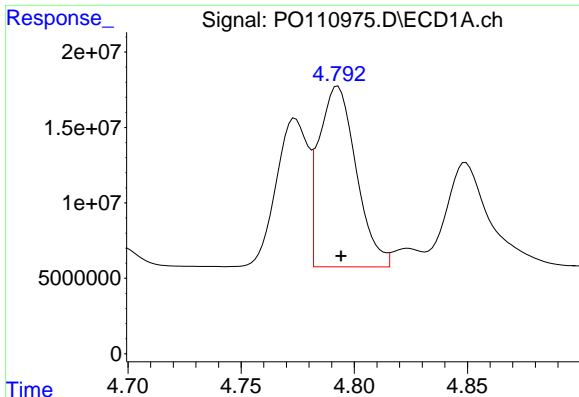
#16 AR-1242-1

R.T.: 4.774 min
 Delta R.T.: -0.002 min
 Response: 95966217
 Conc: 521.76 ng/ml



#16 AR-1242-1

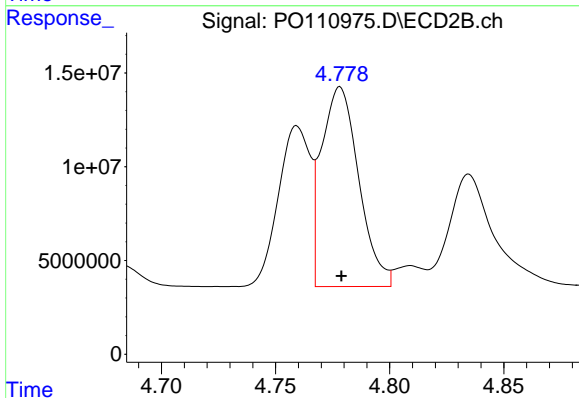
R.T.: 4.759 min
 Delta R.T.: 0.000 min
 Response: 83649133
 Conc: 632.14 ng/ml



#17 AR-1242-2

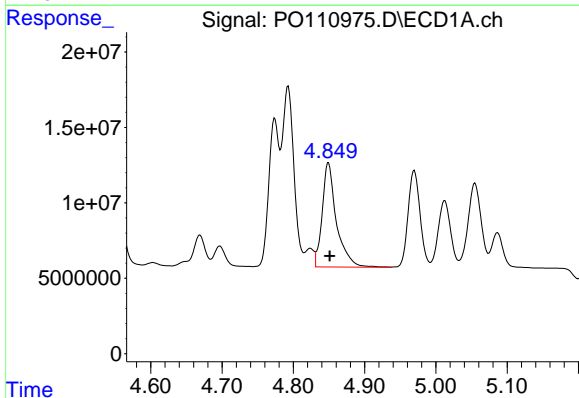
R.T.: 4.793 min
 Delta R.T.: -0.001 min
 Response: 137044690
 Conc: 532.00 ng/ml

Instrument :
 ECD_O
 ClientSampleId :
 AR1660CCC500



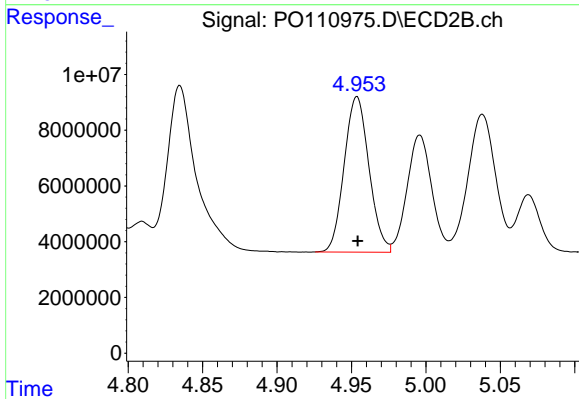
#17 AR-1242-2

R.T.: 4.778 min
 Delta R.T.: 0.000 min
 Response: 120835055
 Conc: 635.73 ng/ml



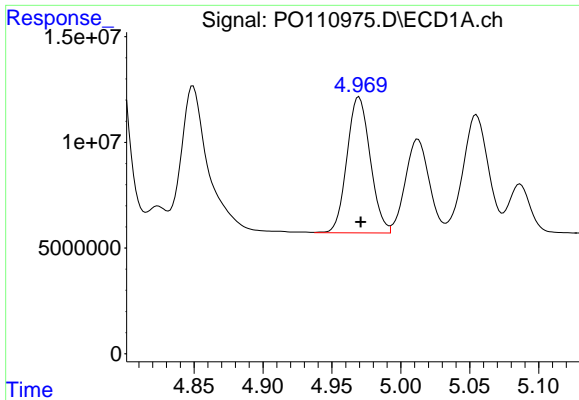
#18 AR-1242-3

R.T.: 4.849 min
 Delta R.T.: -0.002 min
 Response: 95963140
 Conc: 526.95 ng/ml



#18 AR-1242-3

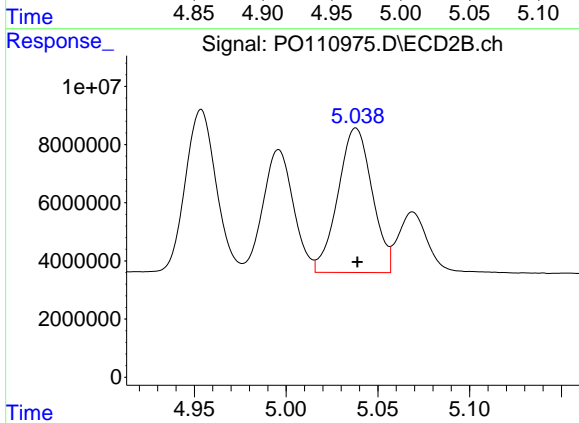
R.T.: 4.954 min
 Delta R.T.: 0.000 min
 Response: 64782810
 Conc: 639.38 ng/ml



#19 AR-1242-4

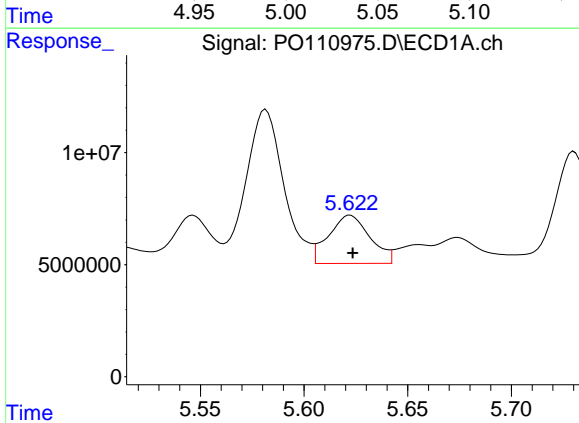
R.T.: 4.970 min
 Delta R.T.: -0.001 min
 Response: 75526079
 Conc: 540.81 ng/ml

Instrument :
 ECD_O
 ClientSampleId :
 AR1660CCC500



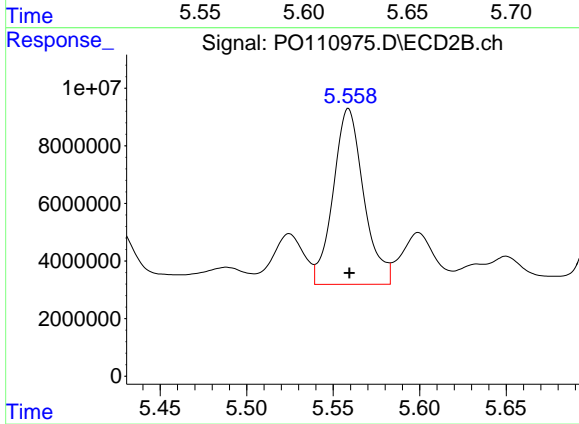
#19 AR-1242-4

R.T.: 5.038 min
 Delta R.T.: 0.000 min
 Response: 64504307
 Conc: 621.97 ng/ml



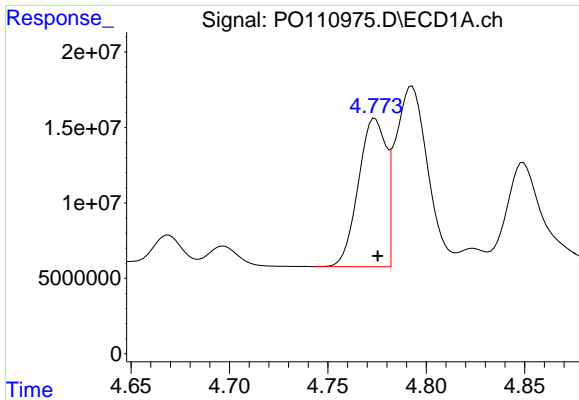
#20 AR-1242-5

R.T.: 5.622 min
 Delta R.T.: -0.001 min
 Response: 29919204
 Conc: 191.92 ng/ml



#20 AR-1242-5

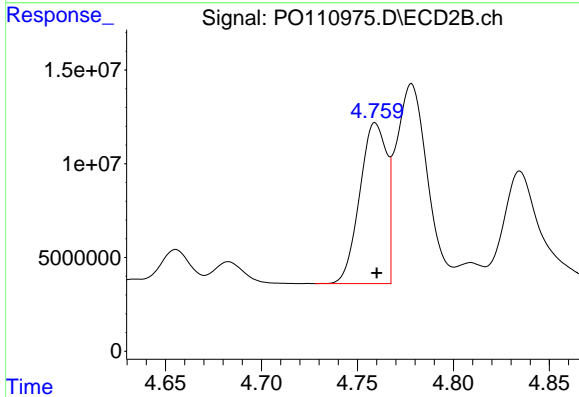
R.T.: 5.559 min
 Delta R.T.: 0.000 min
 Response: 74672478
 Conc: 589.99 ng/ml



#21 AR-1248-1

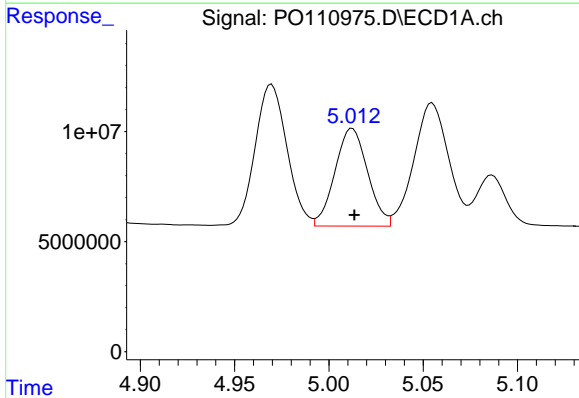
R.T.: 4.774 min
 Delta R.T.: -0.001 min
 Response: 95966217
 Conc: 730.55 ng/ml

Instrument :
 ECD_O
 ClientSampleId :
 AR1660CCC500



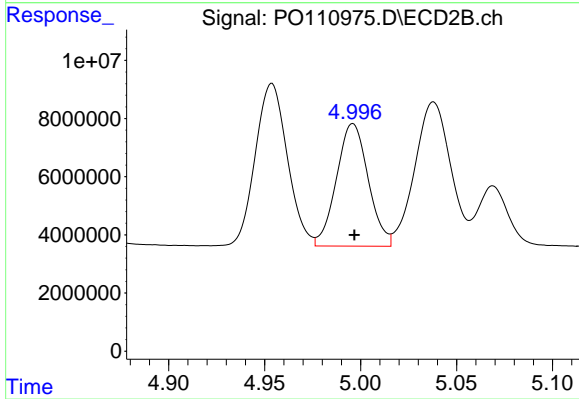
#21 AR-1248-1

R.T.: 4.759 min
 Delta R.T.: 0.000 min
 Response: 83649133
 Conc: 867.96 ng/ml



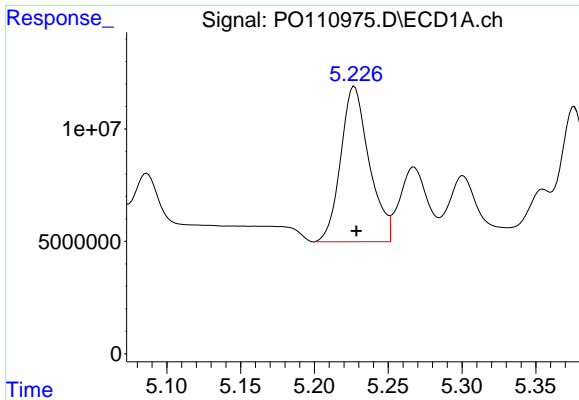
#22 AR-1248-2

R.T.: 5.012 min
 Delta R.T.: -0.001 min
 Response: 53593214
 Conc: 305.84 ng/ml



#22 AR-1248-2

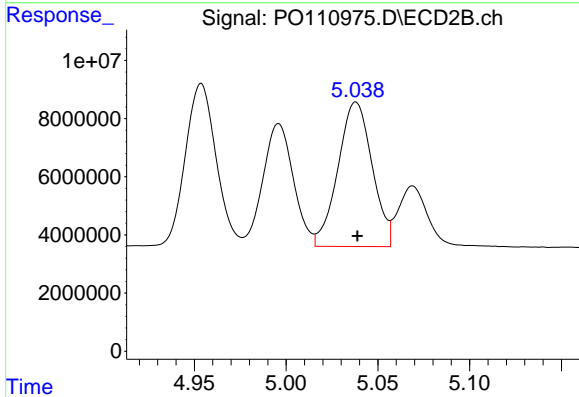
R.T.: 4.996 min
 Delta R.T.: 0.000 min
 Response: 48639459
 Conc: 359.97 ng/ml



#23 AR-1248-3

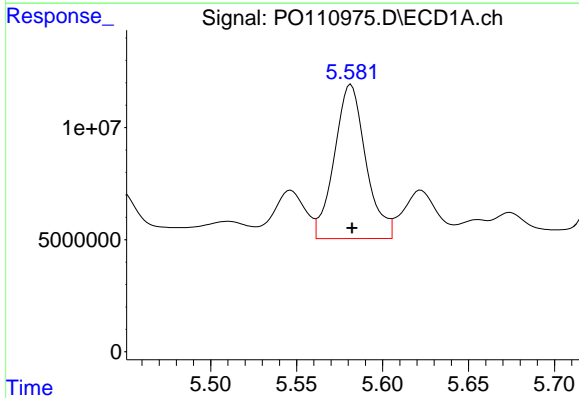
R.T.: 5.227 min
 Delta R.T.: -0.001 min
 Response: 92585262
 Conc: 419.95 ng/ml

Instrument :
 ECD_O
 ClientSampleId :
 AR1660CCC500



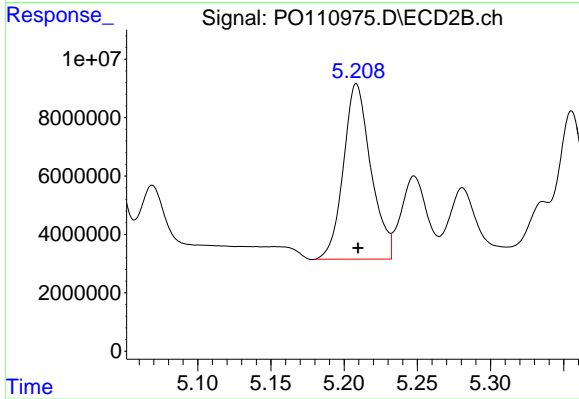
#23 AR-1248-3

R.T.: 5.038 min
 Delta R.T.: 0.000 min
 Response: 64504307
 Conc: 444.42 ng/ml



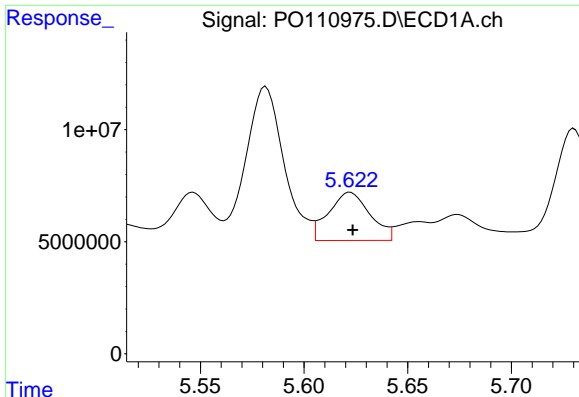
#24 AR-1248-4

R.T.: 5.582 min
 Delta R.T.: 0.000 min
 Response: 87779060
 Conc: 267.85 ng/ml



#24 AR-1248-4

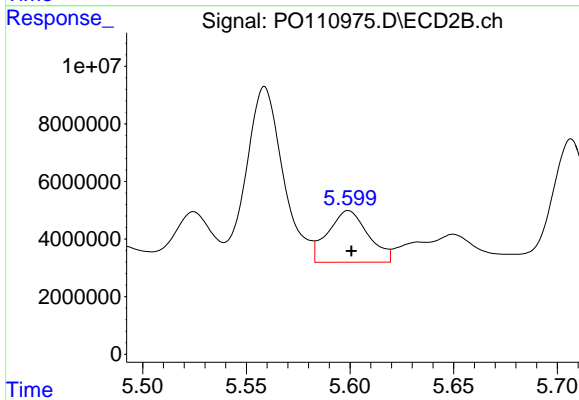
R.T.: 5.208 min
 Delta R.T.: -0.001 min
 Response: 78448112
 Conc: 468.30 ng/ml



#25 AR-1248-5

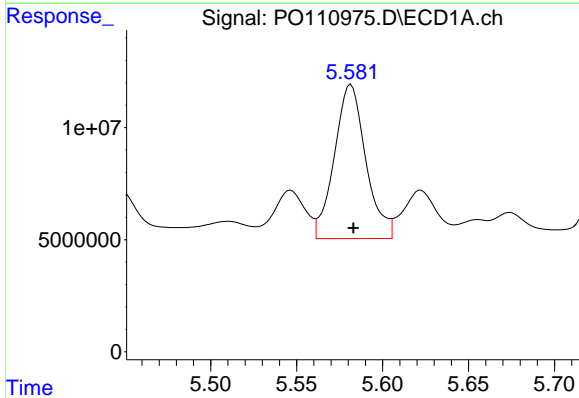
R.T.: 5.622 min
 Delta R.T.: -0.001 min
 Response: 29919204
 Conc: 128.16 ng/ml

Instrument :
 ECD_O
 ClientSampleId :
 AR1660CCC500



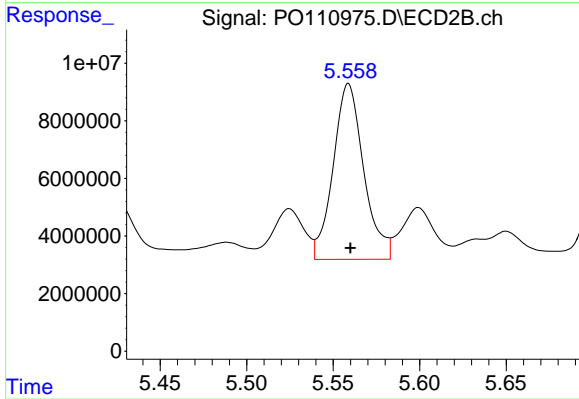
#25 AR-1248-5

R.T.: 5.599 min
 Delta R.T.: -0.001 min
 Response: 24215936
 Conc: 144.25 ng/ml



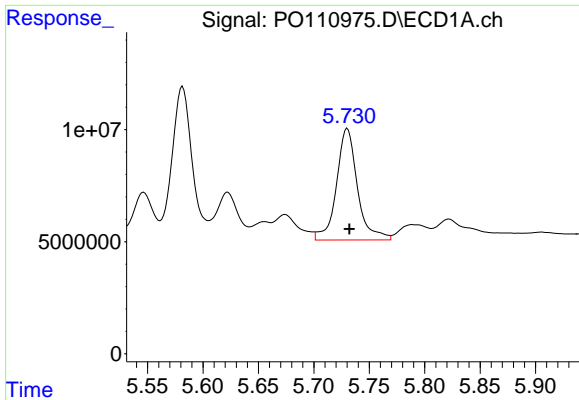
#26 AR-1254-1

R.T.: 5.582 min
 Delta R.T.: -0.001 min
 Response: 87779060
 Conc: 260.03 ng/ml



#26 AR-1254-1

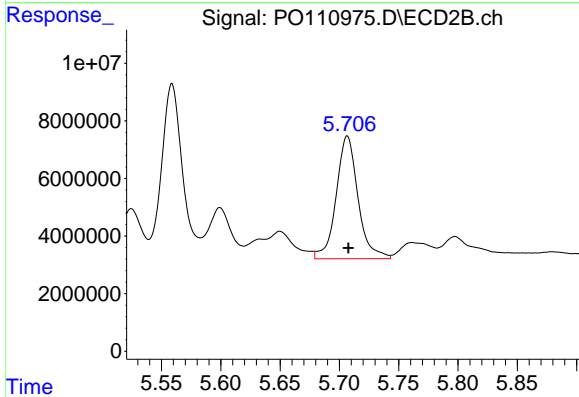
R.T.: 5.559 min
 Delta R.T.: -0.001 min
 Response: 74672478
 Conc: 297.47 ng/ml



#27 AR-1254-2

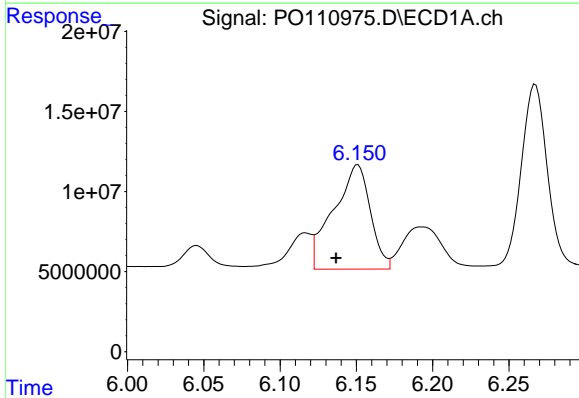
R.T.: 5.730 min
 Delta R.T.: -0.002 min
 Response: 65602249
 Conc: 228.02 ng/ml

Instrument :
 ECD_O
 ClientSampleId :
 AR1660CCC500



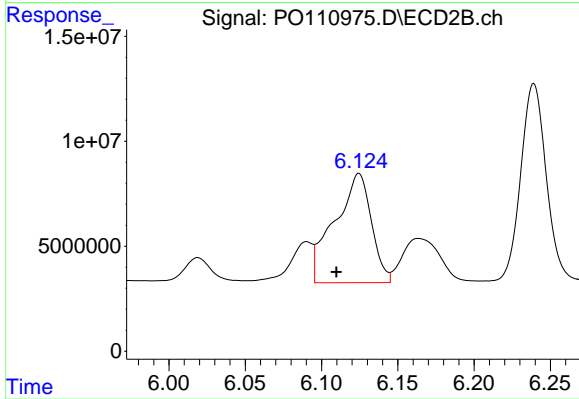
#27 AR-1254-2

R.T.: 5.707 min
 Delta R.T.: 0.000 min
 Response: 54706854
 Conc: 250.73 ng/ml



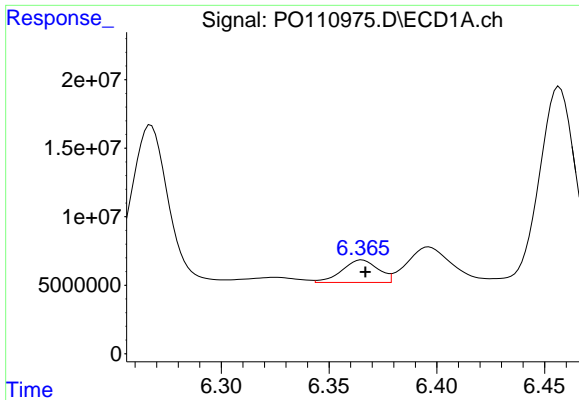
#28 AR-1254-3

R.T.: 6.151 min
 Delta R.T.: 0.014 min
 Response: 109460557
 Conc: 239.36 ng/ml



#28 AR-1254-3

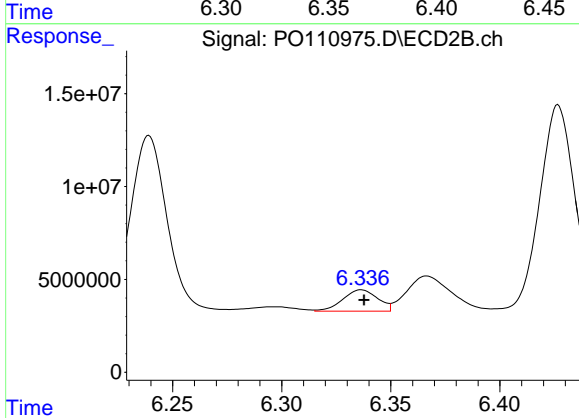
R.T.: 6.125 min
 Delta R.T.: 0.015 min
 Response: 87104209
 Conc: 260.63 ng/ml



#29 AR-1254-4

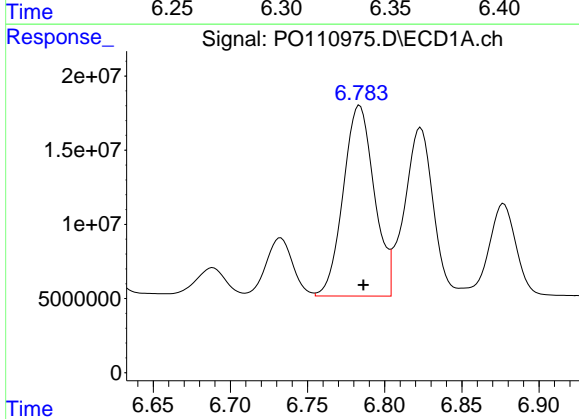
R.T.: 6.365 min
 Delta R.T.: -0.002 min
 Response: 19149712
 Conc: 62.82 ng/ml

Instrument :
 ECD_O
 ClientSampleId :
 AR1660CCC500



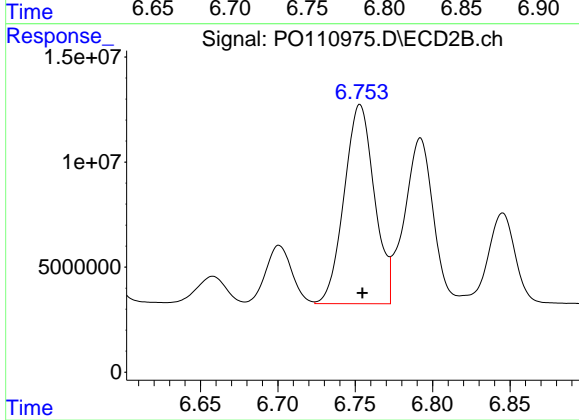
#29 AR-1254-4

R.T.: 6.337 min
 Delta R.T.: -0.001 min
 Response: 12842392
 Conc: 66.14 ng/ml



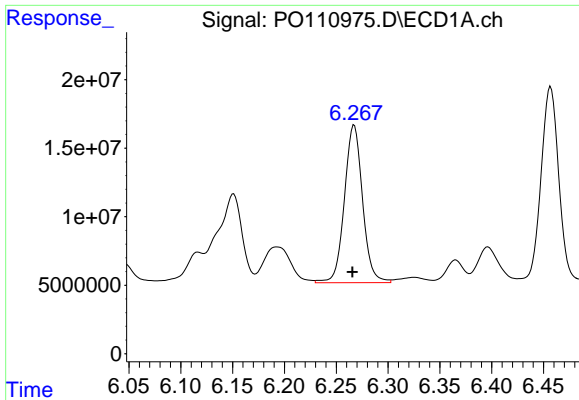
#30 AR-1254-5

R.T.: 6.784 min
 Delta R.T.: -0.002 min
 Response: 179898815
 Conc: 426.41 ng/ml



#30 AR-1254-5

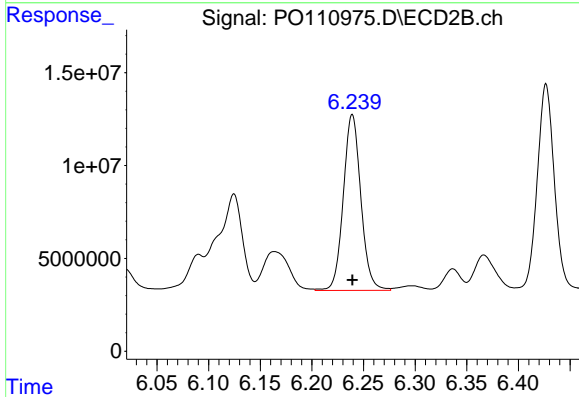
R.T.: 6.753 min
 Delta R.T.: -0.001 min
 Response: 128892305
 Conc: 480.44 ng/ml



#31 AR-1260-1

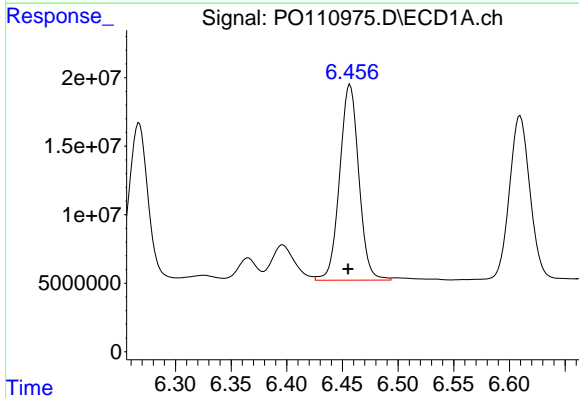
R.T.: 6.267 min
 Delta R.T.: 0.002 min
 Response: 140403652
 Conc: 422.11 ng/ml

Instrument :
 ECD_O
 ClientSampleId :
 AR1660CCC500



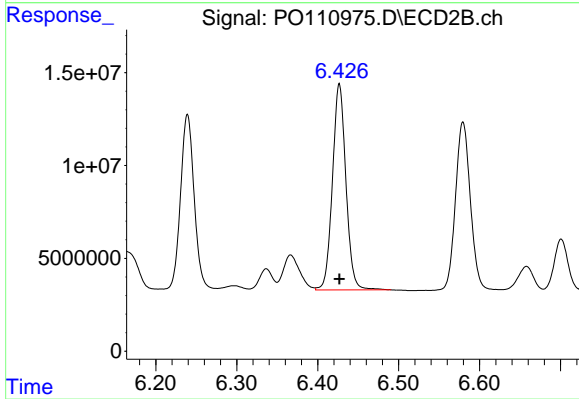
#31 AR-1260-1

R.T.: 6.239 min
 Delta R.T.: 0.000 min
 Response: 112108553
 Conc: 507.81 ng/ml



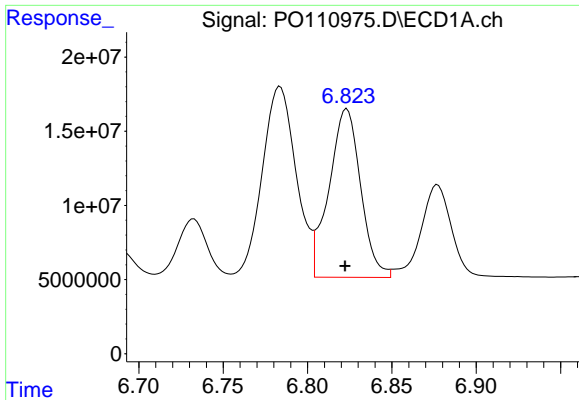
#32 AR-1260-2

R.T.: 6.457 min
 Delta R.T.: 0.002 min
 Response: 171163232
 Conc: 412.63 ng/ml



#32 AR-1260-2

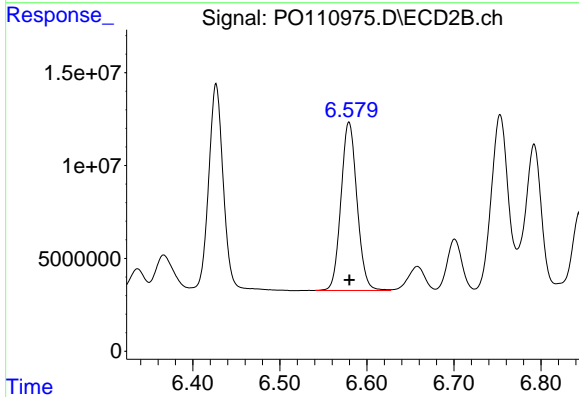
R.T.: 6.427 min
 Delta R.T.: 0.000 min
 Response: 128498811
 Conc: 499.55 ng/ml



#33 AR-1260-3

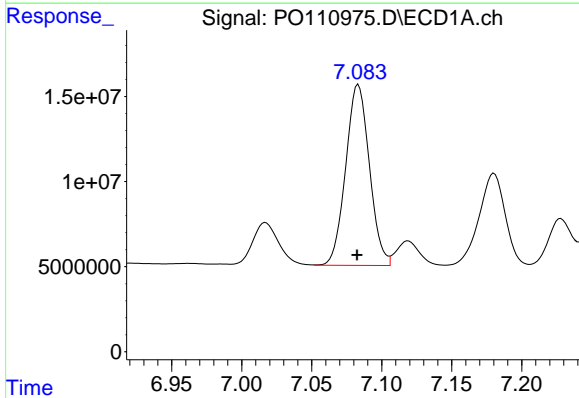
R.T.: 6.823 min
 Delta R.T.: 0.001 min
 Response: 148101221
 Conc: 420.42 ng/ml

Instrument :
 ECD_O
 ClientSampleId :
 AR1660CCC500



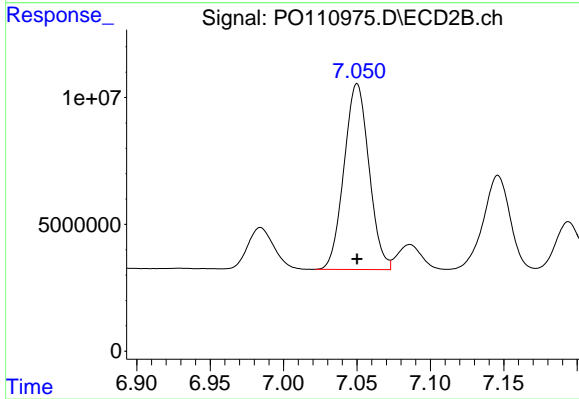
#33 AR-1260-3

R.T.: 6.579 min
 Delta R.T.: 0.000 min
 Response: 116104469
 Conc: 498.00 ng/ml



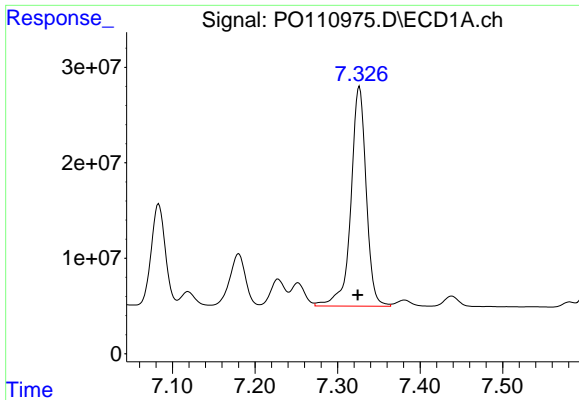
#34 AR-1260-4

R.T.: 7.083 min
 Delta R.T.: 0.000 min
 Response: 125403574
 Conc: 412.19 ng/ml



#34 AR-1260-4

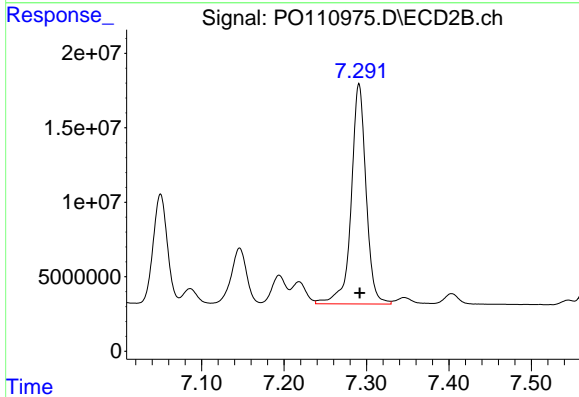
R.T.: 7.050 min
 Delta R.T.: 0.000 min
 Response: 86875065
 Conc: 477.08 ng/ml



#35 AR-1260-5

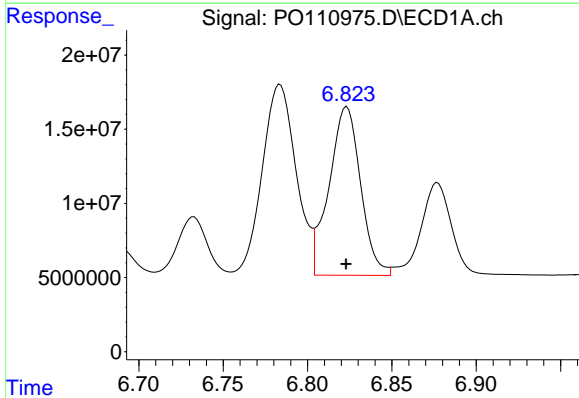
R.T.: 7.326 min
 Delta R.T.: 0.002 min
 Response: 296559409
 Conc: 403.82 ng/ml

Instrument :
 ECD_O
 ClientSampleId :
 AR1660CCC500



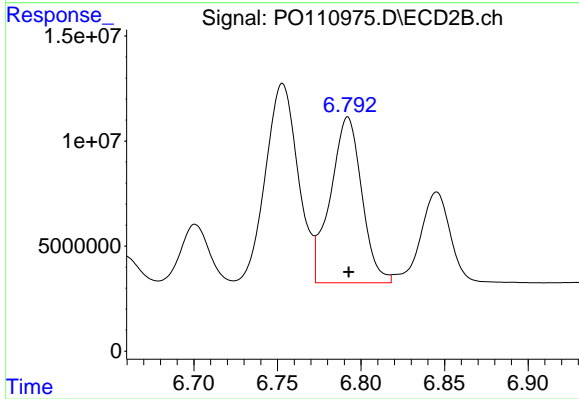
#35 AR-1260-5

R.T.: 7.291 min
 Delta R.T.: 0.000 min
 Response: 185511850
 Conc: 471.81 ng/ml



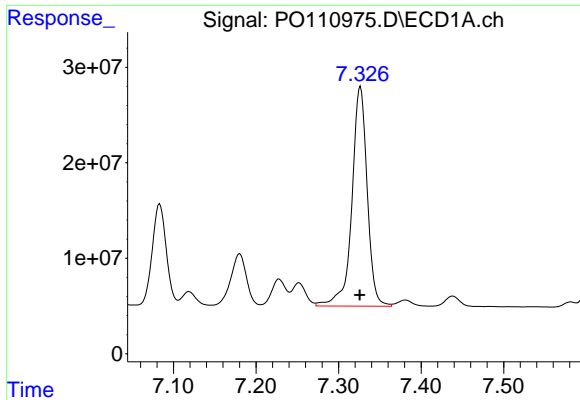
#36 AR-1262-1

R.T.: 6.823 min
 Delta R.T.: 0.000 min
 Response: 148101221
 Conc: 321.66 ng/ml



#36 AR-1262-1

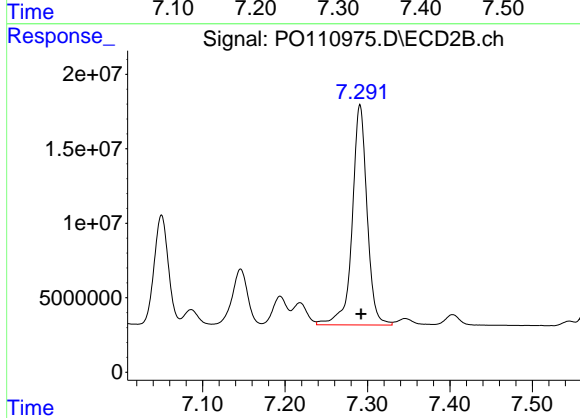
R.T.: 6.792 min
 Delta R.T.: 0.000 min
 Response: 102901085
 Conc: 364.37 ng/ml



#37 AR-1262-2

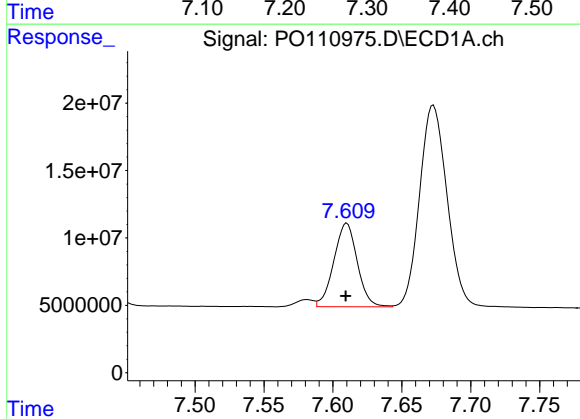
R.T.: 7.326 min
 Delta R.T.: 0.000 min
 Response: 296559409
 Conc: 377.06 ng/ml

Instrument :
 ECD_O
 ClientSampleId :
 AR1660CCC500



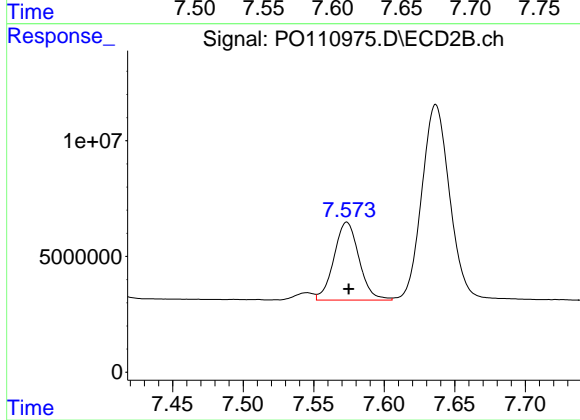
#37 AR-1262-2

R.T.: 7.291 min
 Delta R.T.: -0.001 min
 Response: 185511850
 Conc: 422.28 ng/ml



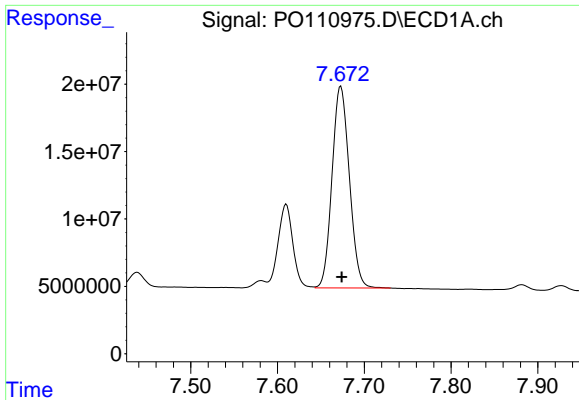
#38 AR-1262-3

R.T.: 7.610 min
 Delta R.T.: 0.000 min
 Response: 73326208
 Conc: 219.49 ng/ml



#38 AR-1262-3

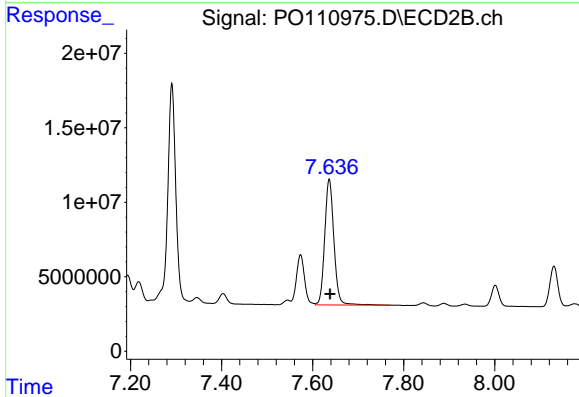
R.T.: 7.574 min
 Delta R.T.: -0.001 min
 Response: 41688916
 Conc: 256.76 ng/ml



#39 AR-1262-4

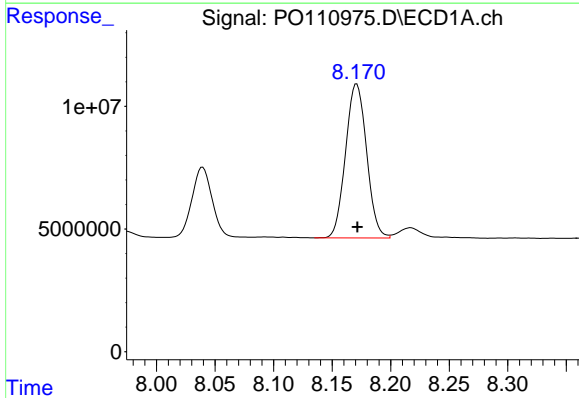
R.T.: 7.673 min
Delta R.T.: -0.001 min
Response: 207274004
Conc: 358.29 ng/ml

Instrument :
ECD_O
ClientSampleId :
AR1660CCC500



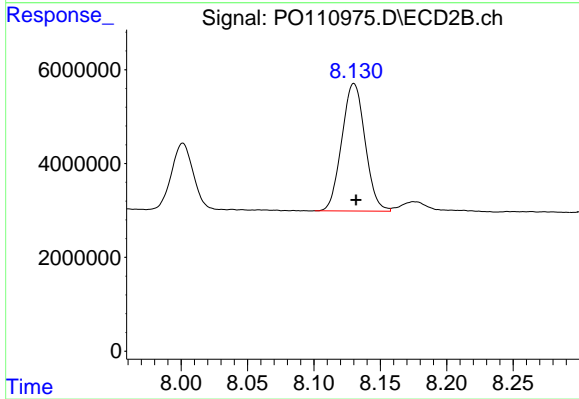
#39 AR-1262-4

R.T.: 7.637 min
Delta R.T.: -0.002 min
Response: 118493149
Conc: 407.01 ng/ml



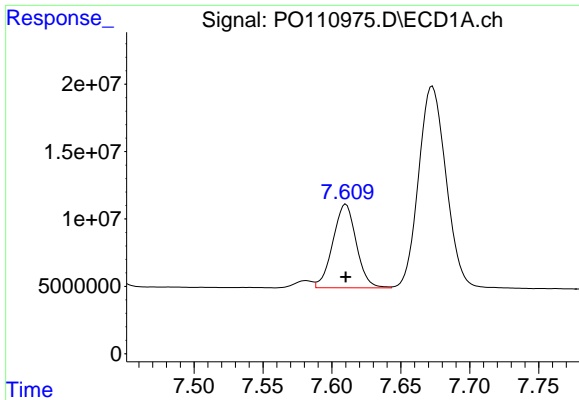
#40 AR-1262-5

R.T.: 8.171 min
Delta R.T.: 0.000 min
Response: 78676115
Conc: 294.89 ng/ml



#40 AR-1262-5

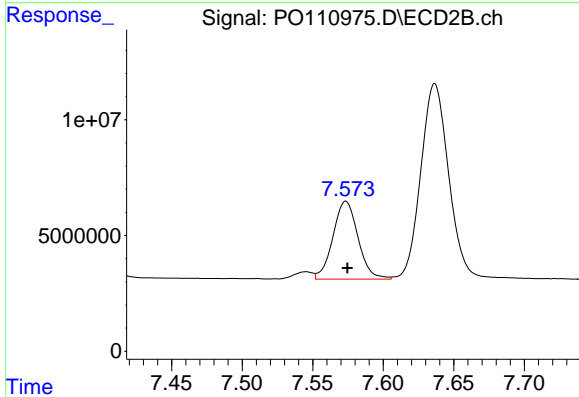
R.T.: 8.130 min
Delta R.T.: -0.002 min
Response: 33174525
Conc: 336.48 ng/ml



#41 AR-1268-1

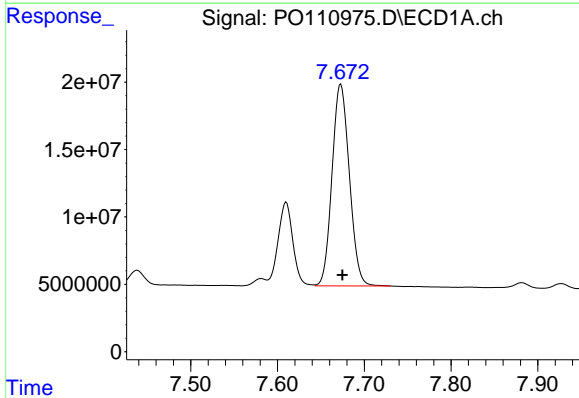
R.T.: 7.610 min
 Delta R.T.: 0.000 min
 Response: 73326208
 Conc: 82.40 ng/ml

Instrument :
 ECD_O
 ClientSampleId :
 AR1660CCC500



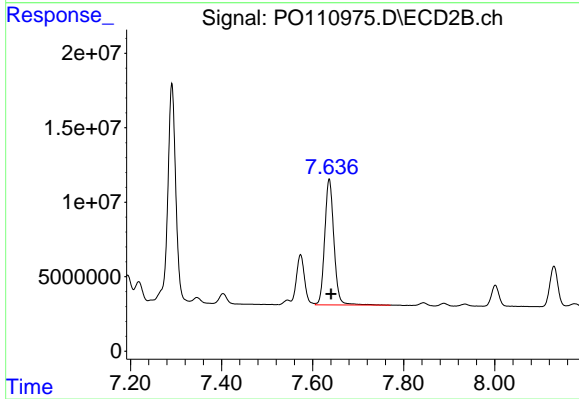
#41 AR-1268-1

R.T.: 7.574 min
 Delta R.T.: 0.000 min
 Response: 41688916
 Conc: 96.74 ng/ml



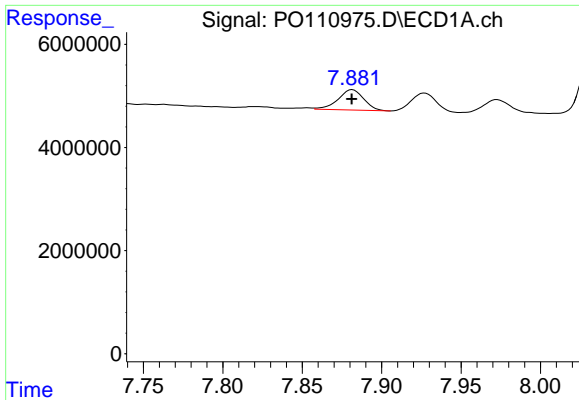
#42 AR-1268-2

R.T.: 7.673 min
 Delta R.T.: -0.002 min
 Response: 207274004
 Conc: 258.30 ng/ml



#42 AR-1268-2

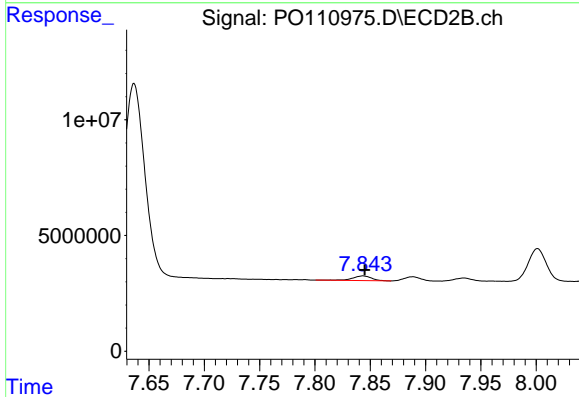
R.T.: 7.637 min
 Delta R.T.: -0.004 min
 Response: 118493149
 Conc: 308.68 ng/ml



#43 AR-1268-3

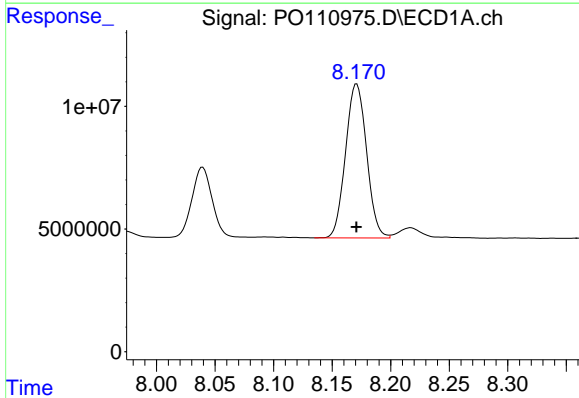
R.T.: 7.882 min
 Delta R.T.: 0.000 min
 Response: 4433748
 Conc: 6.46 ng/ml

Instrument :
 ECD_O
 ClientSampleId :
 AR1660CCC500



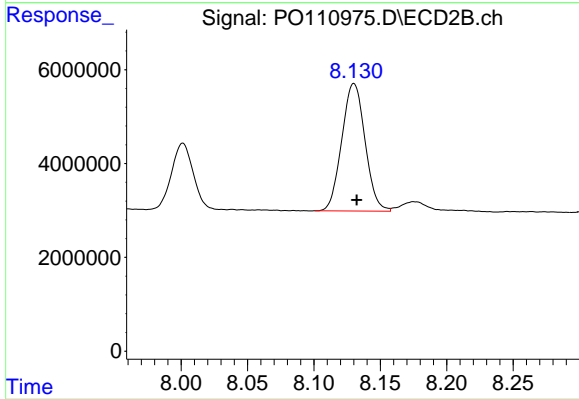
#43 AR-1268-3

R.T.: 7.843 min
 Delta R.T.: -0.002 min
 Response: 2492708
 Conc: 8.78 ng/ml



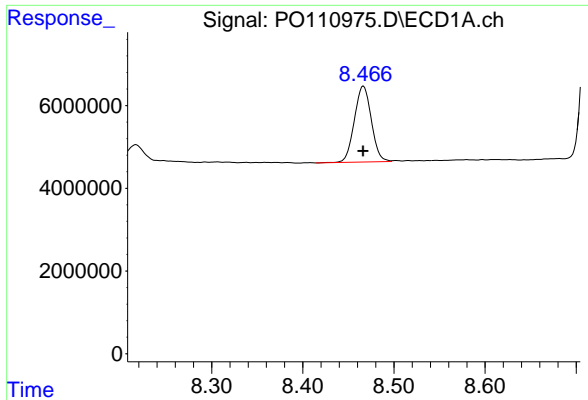
#44 AR-1268-4

R.T.: 8.171 min
 Delta R.T.: 0.000 min
 Response: 78676115
 Conc: 283.00 ng/ml



#44 AR-1268-4

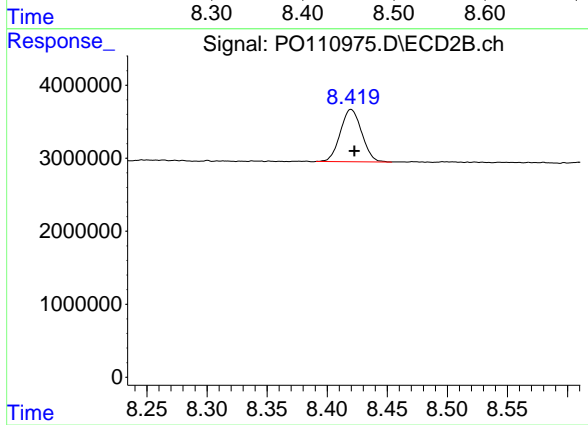
R.T.: 8.130 min
 Delta R.T.: -0.002 min
 Response: 33174525
 Conc: 318.61 ng/ml



#45 AR-1268-5

R.T.: 8.467 min
 Delta R.T.: 0.000 min
 Response: 23816912
 Conc: 11.65 ng/ml

Instrument :
 ECD_O
 ClientSampleId :
 AR1660CCC500



#45 AR-1268-5

R.T.: 8.420 min
 Delta R.T.: -0.003 min
 Response: 8887971
 Conc: 14.64 ng/ml