

Data Path : Z:\pestpcbsrv\HPCHEM1\ECD_0\Data\P0050825\
 Data File : PO110979.D
 Signal(s) : Signal #1: ECD1A.ch Signal #2: ECD2B.ch
 Acq On : 09 May 2025 03:28
 Operator : YP/AJ
 Sample : I.BLK
 Misc :
 ALS Vial : 2 Sample Multiplier: 1

Instrument :
 ECD_0
 ClientSampleId :
 I.BLK

Integration File signal 1: autoint1.e
 Integration File signal 2: autoint2.e
 Quant Time: May 09 06:32:34 2025
 Quant Method : Z:\pestpcbsrv\HPCHEM1\ECD_0\methods\P0050225.M
 Quant Title : GC EXTRACTABLES
 QLast Update : Fri May 02 23:47:49 2025
 Response via : Initial Calibration
 Integrator: ChemStation

Volume Inj. : 2 µl
 Signal #1 Phase : ZB-MR2 Signal #2 Phase: ZB-MR2
 Signal #1 Info : 30Mx0.32mmx 0.50µ Signal #2 Info : 30M x 0.32mm x 0.25µm

Compound	RT#1	RT#2	Resp#1	Resp#2	ng/ml	ng/ml
System Monitoring Compounds						
1) SA Tetrachlo...	3.684	3.680	96911118	87335838	16.940	18.033
2) SA Decachlor...	8.725	8.675	85333206	30519772	13.983	18.088 #
Target Compounds						
3) L1 AR-1016-1	4.781	4.766	5982295	1282294	27.067	8.071 #
4) L1 AR-1016-2	4.781	4.766	5982295	1282294	19.287	5.610 #
5) L1 AR-1016-3	4.841	4.955	1315427	1976125	5.752	16.206 #
6) L1 AR-1016-4	4.959	5.007	4212660	1975060	25.196	19.601
7) L1 AR-1016-5	5.228	5.212	11917859	7973384	66.921	60.679
8) L2 AR-1221-1	3.879	3.881	536378	108179	6.160	1.625 #
9) L2 AR-1221-2	3.985	3.979	1712907	1347925	25.297	26.259
10) L2 AR-1221-3	4.016f	4.048	61768	72870	0.312	0.476 #
11) L3 AR-1232-1	4.016f	4.048	61768	72870	0.402	0.620 #
12) L3 AR-1232-2	4.557	4.766	820194	1282294	9.956	11.147
13) L3 AR-1232-3	4.781	4.955	5982295	1976125	37.604	32.779
14) L3 AR-1232-4	4.983	5.042	3151430	794067	37.441	14.253 #
15) L3 AR-1232-5	5.035	5.212	2362297	7973384	40.126	135.453 #
16) L4 AR-1242-1	4.781	4.766	5982295	1282294	32.525	9.690 #
17) L4 AR-1242-2	4.781	4.766	5982295	1282294	23.223	6.746 #
18) L4 AR-1242-3	4.858	4.955	1494744	1976125	8.208	19.504 #
19) L4 AR-1242-4	4.983	5.042	3151430	794067	22.566	7.657 #
20) L4 AR-1242-5	5.641	5.549	3804899	1713443	24.407	13.538 #
21) L5 AR-1248-1	4.781	4.766	5982295	1282294	45.540	13.305 #
22) L5 AR-1248-2	5.035	5.007	2362297	1975060	13.481	14.617
23) L5 AR-1248-3	5.228	5.042	11917859	794067	54.057	5.471 #
24) L5 AR-1248-4	5.577	5.212	2643437	7973384	8.066	47.598 #
25) L5 AR-1248-5	5.641	5.581	3804899	15641023	16.299	93.169 #
26) L6 AR-1254-1	5.577	5.549	2643437	1713443	7.831	6.826
27) L6 AR-1254-2	5.743	5.722	4331564	3949117	15.056	18.100
28) L6 AR-1254-3	6.137	6.100	7123743	5012497	15.578	14.998
29) L6 AR-1254-4	6.368	6.333	1809233	1705304	5.935	8.783 #
30) L6 AR-1254-5	6.785	6.746	710484	163229	1.684	0.608 #
31) L7 AR-1260-1	6.278	6.234	2864514	827237	8.612	3.747 #
32) L7 AR-1260-2	6.433	6.401	4721220	2142247	11.382	8.328 #
33) L7 AR-1260-3	6.816	6.580	1627165	266899	4.619	1.145 #
34) L7 AR-1260-4	7.049	7.081	1385080	3312162	4.553	18.189 #
35) L7 AR-1260-5	7.320	7.290	1070142	230047	1.457	0.585 #
36) L8 AR-1262-1	6.816	6.784	1627165	417876	3.534	1.480 #
37) L8 AR-1262-2	7.320	7.290	1070142	230047	1.361	0.524 #
38) L8 AR-1262-3	7.610	7.590	736284	1269887	2.204	7.821 #
39) L8 AR-1262-4	7.665	7.632	352587	787863	0.609	2.706 #
40) L8 AR-1262-5	8.215f	8.163	123193	58138	0.462	0.590 #
41) L9 AR-1268-1	7.610	7.590	736284	1269887	0.827	2.947 #

Data Path : Z:\pestpcbsrv\HPCHEM1\ECD_0\Data\P0050825\
 Data File : P0110979.D
 Signal(s) : Signal #1: ECD1A.ch Signal #2: ECD2B.ch
 Acq On : 09 May 2025 03:28
 Operator : YP/AJ
 Sample : I.BLK
 Misc :
 ALS Vial : 2 Sample Multiplier: 1

Instrument :
 ECD_0
 ClientSampleId :
 I.BLK

Integration File signal 1: autoint1.e
 Integration File signal 2: autoint2.e
 Quant Time: May 09 06:32:34 2025
 Quant Method : Z:\pestpcbsrv\HPCHEM1\ECD_0\methods\P0050225.M
 Quant Title : GC EXTRACTABLES
 QLast Update : Fri May 02 23:47:49 2025
 Response via : Initial Calibration
 Integrator: ChemStation

Volume Inj. : 2 µl
 Signal #1 Phase : ZB-MR1 Signal #2 Phase: ZB-MR2
 Signal #1 Info : 30Mx0.32mmx 0.50µ Signal #2 Info : 30M x 0.32mm x 0.25µm

	Compound	RT#1	RT#2	Resp#1	Resp#2	ng/ml	ng/ml
42)	L9 AR-1268-2	7.665	7.632	352587	787863	0.439	2.052 #
43)	L9 AR-1268-3	7.871	7.824	2450953	811611	3.570	2.858
44)	L9 AR-1268-4	8.215f	8.163	123193	58138	0.443	0.558 #
45)	L9 AR-1268-5	8.464	8.424	768044	195716	0.376	0.322

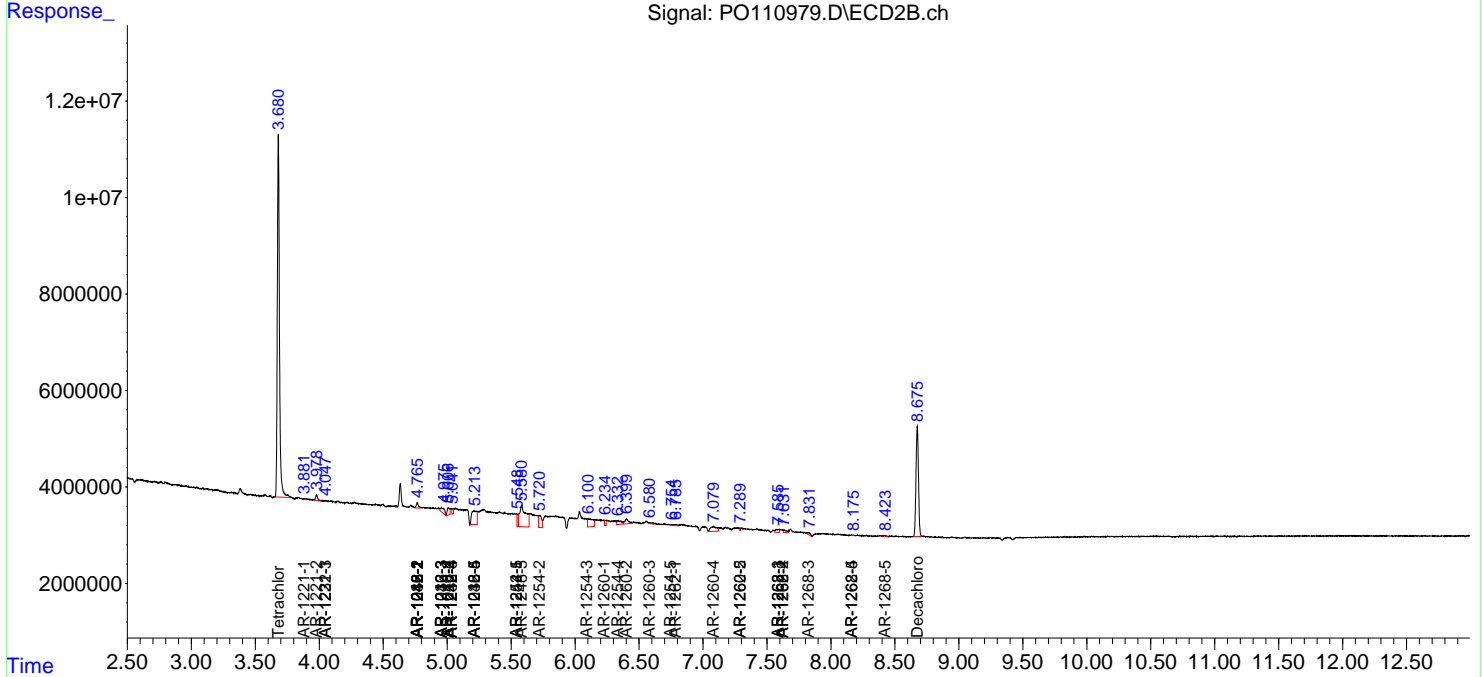
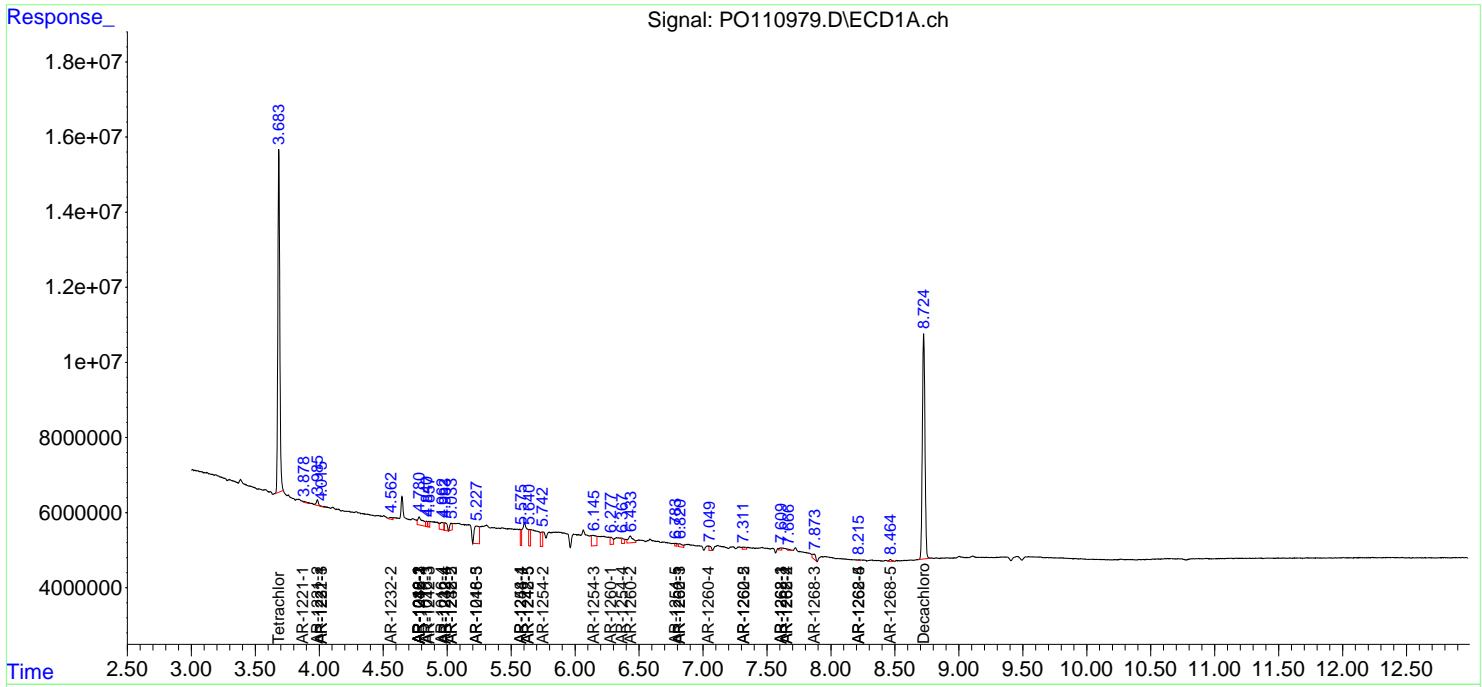
(f)=RT Delta > 1/2 Window (#)=Amounts differ by > 25% (m)=manual int.

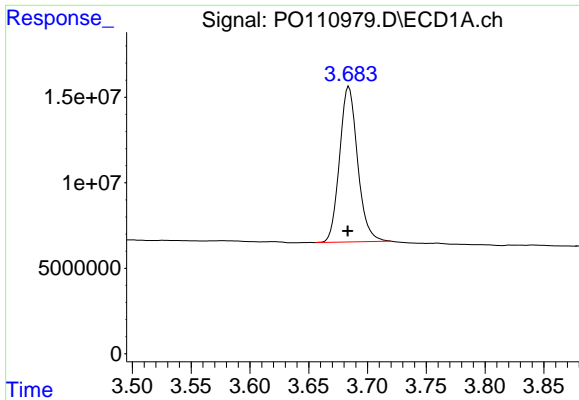
Data Path : Z:\pestpcbsrv\HPCHEM1\ECD_O\Data\PO050825\
 Data File : PO110979.D
 Signal(s) : Signal #1: ECD1A.ch Signal #2: ECD2B.ch
 Acq On : 09 May 2025 03:28
 Operator : YP/AJ
 Sample : I.BLK
 Misc :
 ALS Vial : 2 Sample Multiplier: 1

Instrument :
 ECD_O
 ClientSampleId :
 I.BLK

Integration File signal 1: autoint1.e
 Integration File signal 2: autoint2.e
 Quant Time: May 09 06:32:34 2025
 Quant Method : Z:\pestpcbsrv\HPCHEM1\ECD_O\methods\PO050225.M
 Quant Title : GC EXTRACTABLES
 QLast Update : Fri May 02 23:47:49 2025
 Response via : Initial Calibration
 Integrator: ChemStation

Volume Inj. : 2 µl
 Signal #1 Phase : ZB-MR1 Signal #2 Phase: ZB-MR2
 Signal #1 Info : 30Mx0.32mmx 0.50µ Signal #2 Info : 30M x 0.32mm x 0.25µm

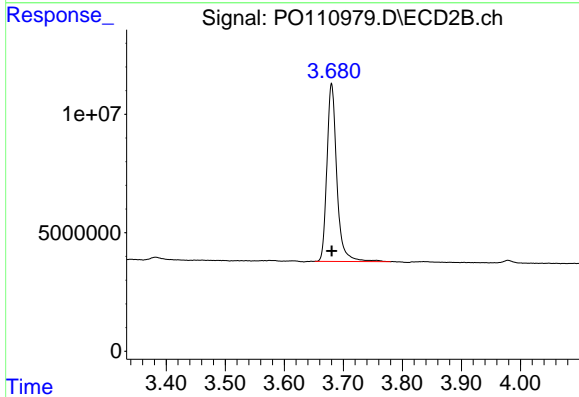




#1 Tetrachloro-m-xylene

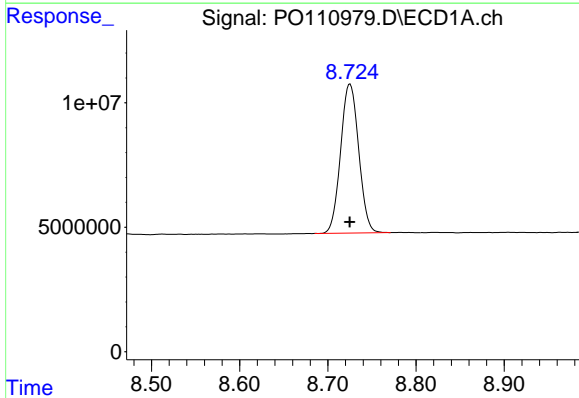
R.T.: 3.684 min
 Delta R.T.: 0.001 min
 Response: 96911118
 Conc: 16.94 ng/ml

Instrument :
 ECD_O
 ClientSampleId :
 I.BLK



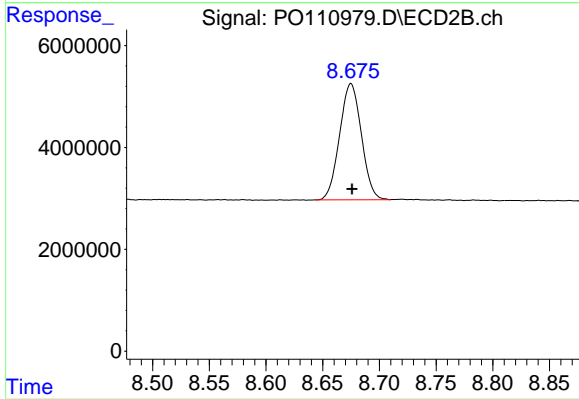
#1 Tetrachloro-m-xylene

R.T.: 3.680 min
 Delta R.T.: 0.000 min
 Response: 87335838
 Conc: 18.03 ng/ml



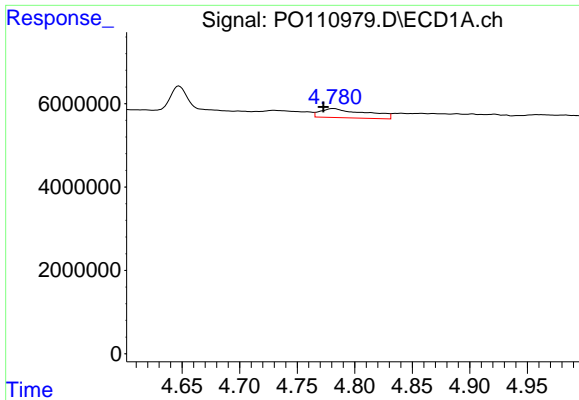
#2 Decachlorobiphenyl

R.T.: 8.725 min
 Delta R.T.: 0.000 min
 Response: 85333206
 Conc: 13.98 ng/ml



#2 Decachlorobiphenyl

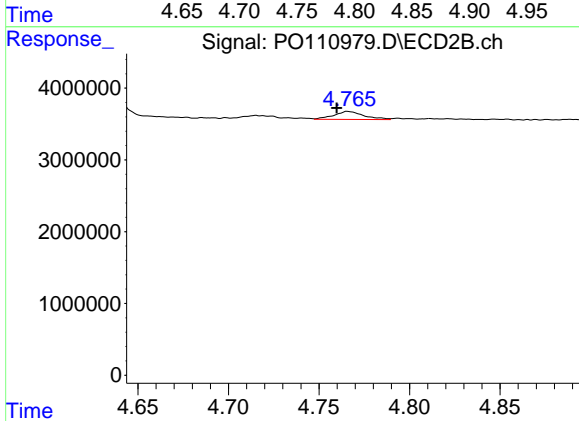
R.T.: 8.675 min
 Delta R.T.: -0.001 min
 Response: 30519772
 Conc: 18.09 ng/ml



#3 AR-1016-1

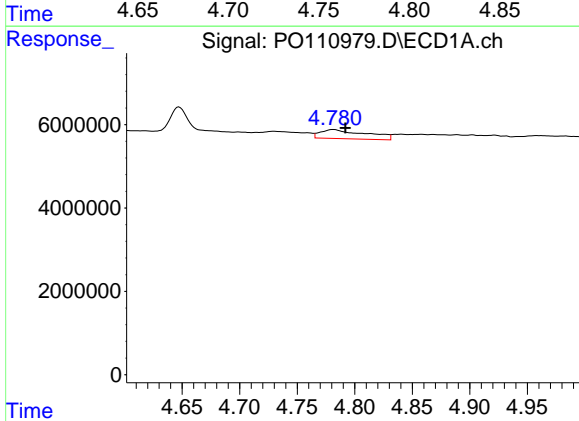
R.T.: 4.781 min
 Delta R.T.: 0.009 min
 Response: 5982295
 Conc: 27.07 ng/ml

Instrument :
 ECD_O
 ClientSampleId :
 I.BLK



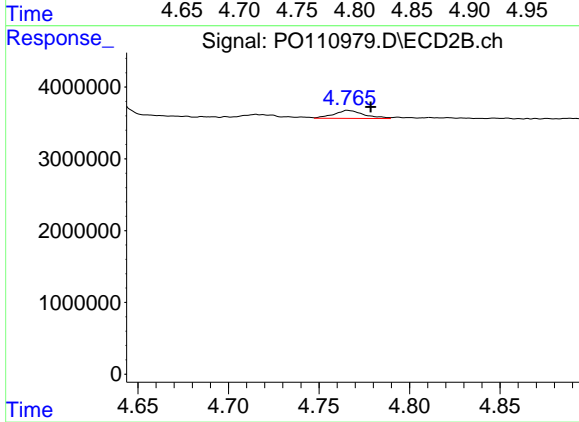
#3 AR-1016-1

R.T.: 4.766 min
 Delta R.T.: 0.006 min
 Response: 1282294
 Conc: 8.07 ng/ml



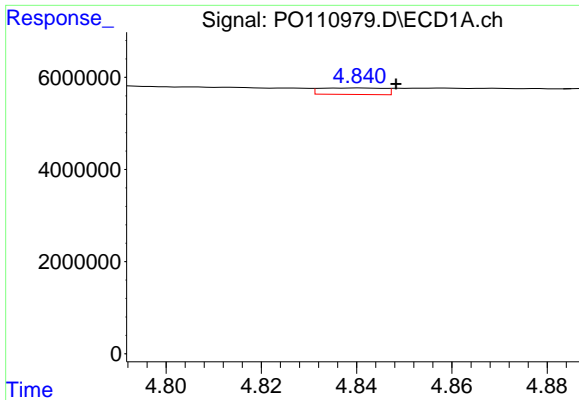
#4 AR-1016-2

R.T.: 4.781 min
 Delta R.T.: -0.010 min
 Response: 5982295
 Conc: 19.29 ng/ml



#4 AR-1016-2

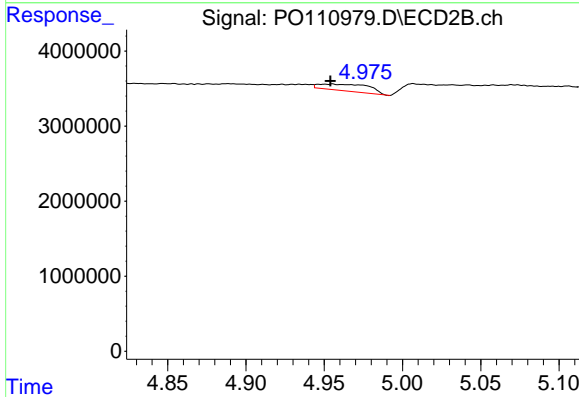
R.T.: 4.766 min
 Delta R.T.: -0.012 min
 Response: 1282294
 Conc: 5.61 ng/ml



#5 AR-1016-3

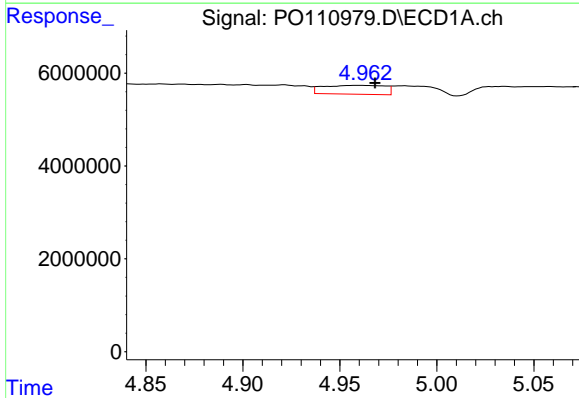
R.T.: 4.841 min
 Delta R.T.: -0.008 min
 Response: 1315427
 Conc: 5.75 ng/ml

Instrument :
 ECD_O
 ClientSampleId :
 I.BLK



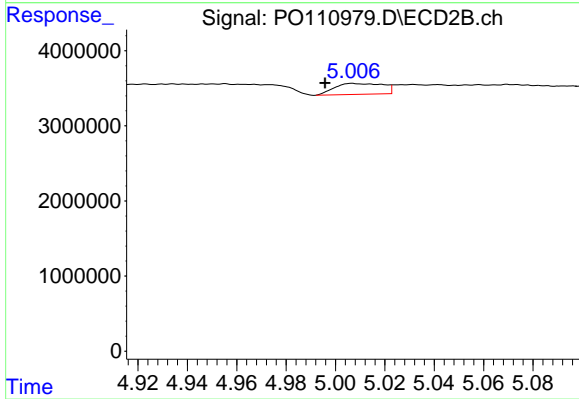
#5 AR-1016-3

R.T.: 4.955 min
 Delta R.T.: 0.001 min
 Response: 1976125
 Conc: 16.21 ng/ml



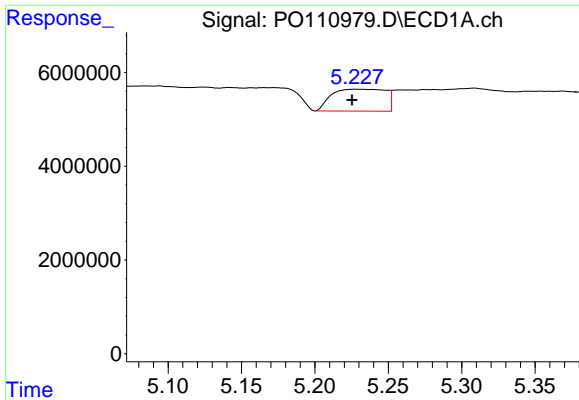
#6 AR-1016-4

R.T.: 4.959 min
 Delta R.T.: -0.009 min
 Response: 4212660
 Conc: 25.20 ng/ml



#6 AR-1016-4

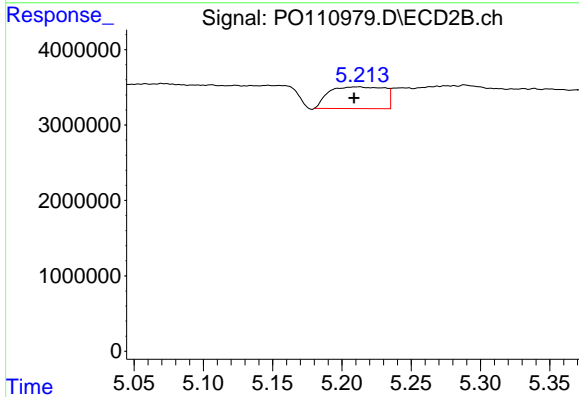
R.T.: 5.007 min
 Delta R.T.: 0.011 min
 Response: 1975060
 Conc: 19.60 ng/ml



#7 AR-1016-5

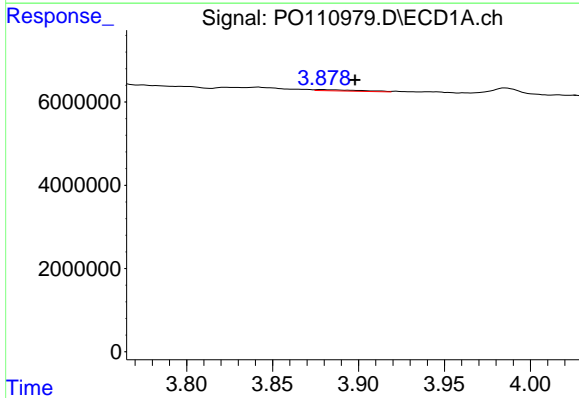
R.T.: 5.228 min
 Delta R.T.: 0.003 min
 Response: 11917859
 Conc: 66.92 ng/ml

Instrument :
 ECD_O
 ClientSampleId :
 I.BLK



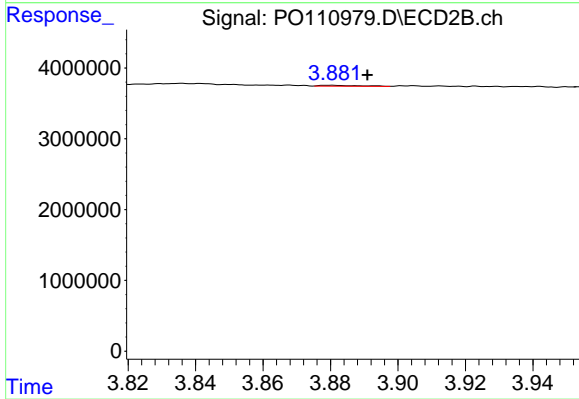
#7 AR-1016-5

R.T.: 5.212 min
 Delta R.T.: 0.003 min
 Response: 7973384
 Conc: 60.68 ng/ml



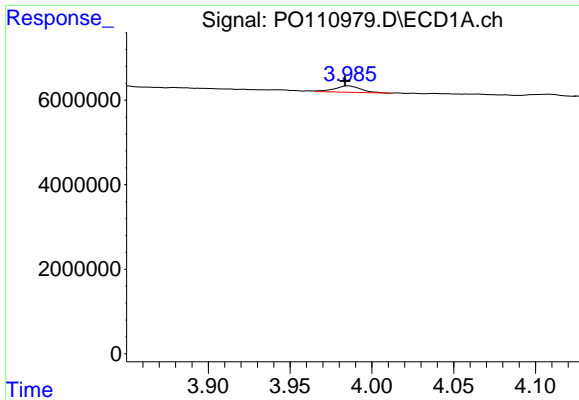
#8 AR-1221-1

R.T.: 3.879 min
 Delta R.T.: -0.019 min
 Response: 536378
 Conc: 6.16 ng/ml



#8 AR-1221-1

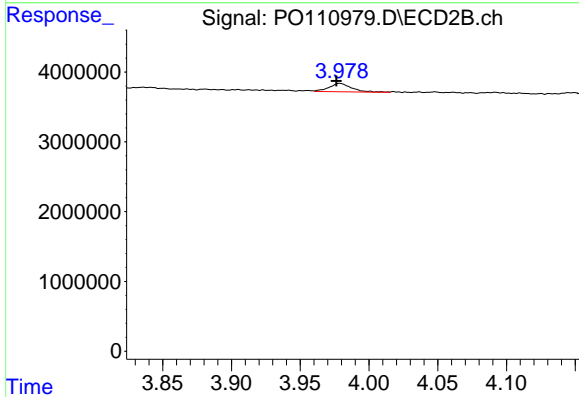
R.T.: 3.881 min
 Delta R.T.: -0.010 min
 Response: 108179
 Conc: 1.63 ng/ml



#9 AR-1221-2

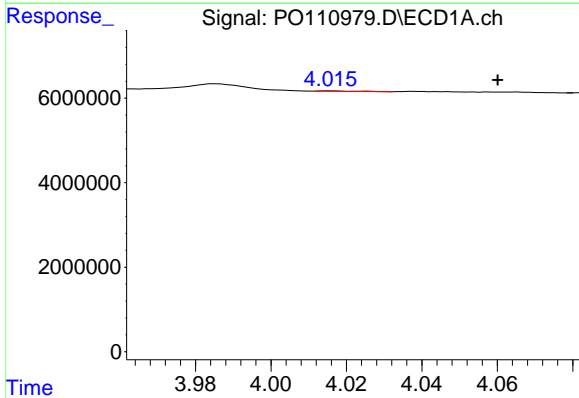
R.T.: 3.985 min
 Delta R.T.: 0.002 min
 Response: 1712907
 Conc: 25.30 ng/ml

Instrument :
 ECD_O
 ClientSampleId :
 I.BLK



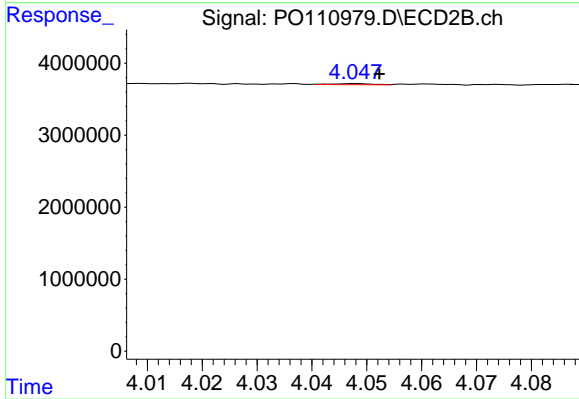
#9 AR-1221-2

R.T.: 3.979 min
 Delta R.T.: 0.002 min
 Response: 1347925
 Conc: 26.26 ng/ml



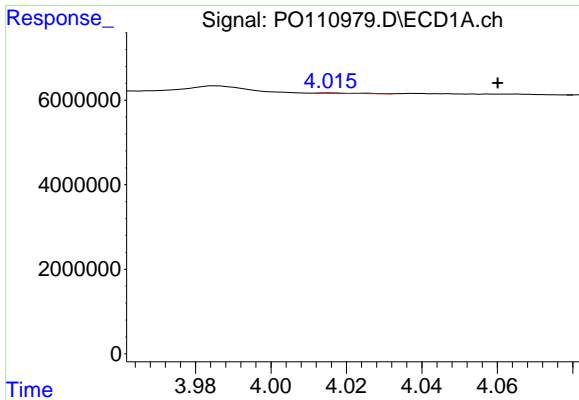
#10 AR-1221-3

R.T.: 4.016 min
 Delta R.T.: -0.044 min
 Response: 61768
 Conc: 0.31 ng/ml



#10 AR-1221-3

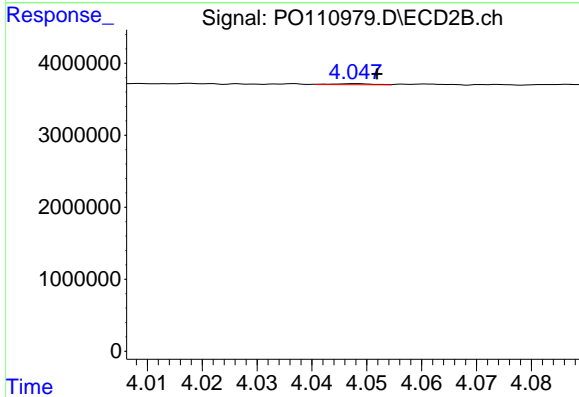
R.T.: 4.048 min
 Delta R.T.: -0.004 min
 Response: 72870
 Conc: 0.48 ng/ml



#11 AR-1232-1

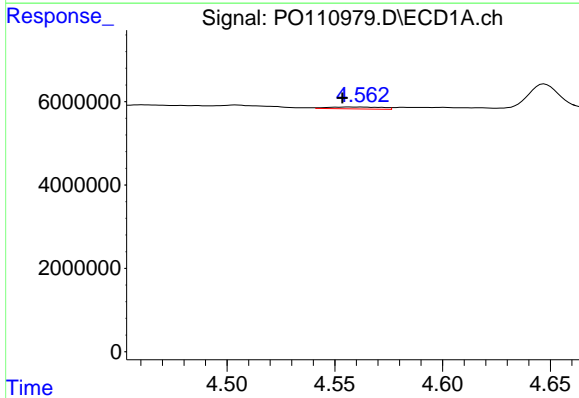
R.T.: 4.016 min
 Delta R.T.: -0.044 min
 Response: 61768
 Conc: 0.40 ng/ml

Instrument :
 ECD_O
 ClientSampleId :
 I.BLK



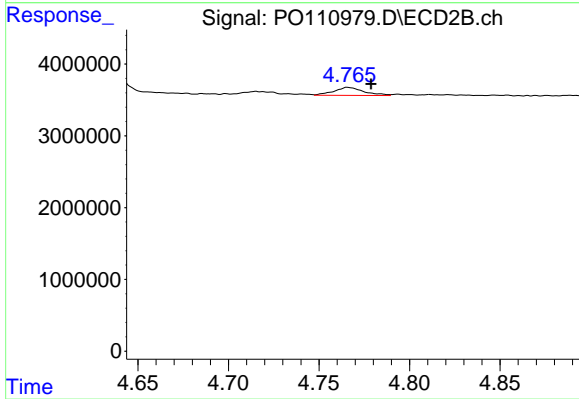
#11 AR-1232-1

R.T.: 4.048 min
 Delta R.T.: -0.004 min
 Response: 72870
 Conc: 0.62 ng/ml



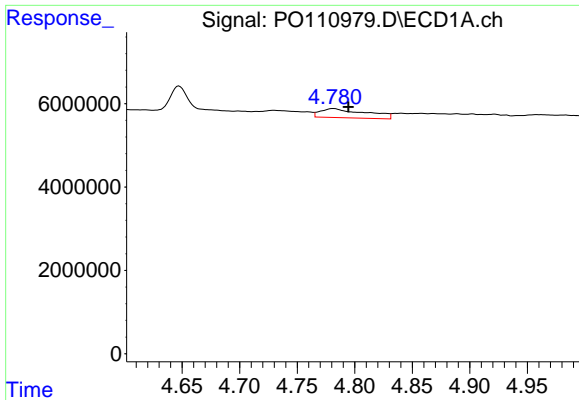
#12 AR-1232-2

R.T.: 4.557 min
 Delta R.T.: 0.003 min
 Response: 820194
 Conc: 9.96 ng/ml



#12 AR-1232-2

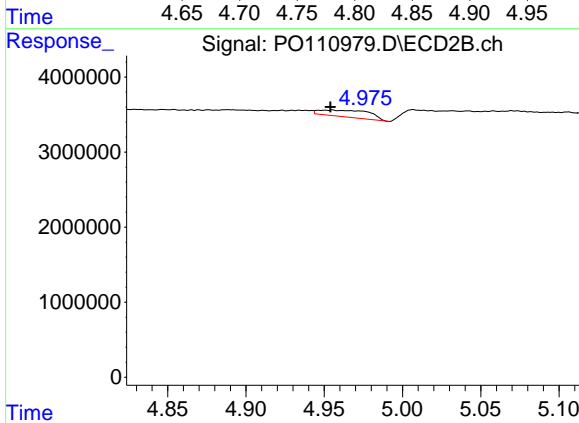
R.T.: 4.766 min
 Delta R.T.: -0.013 min
 Response: 1282294
 Conc: 11.15 ng/ml



#13 AR-1232-3

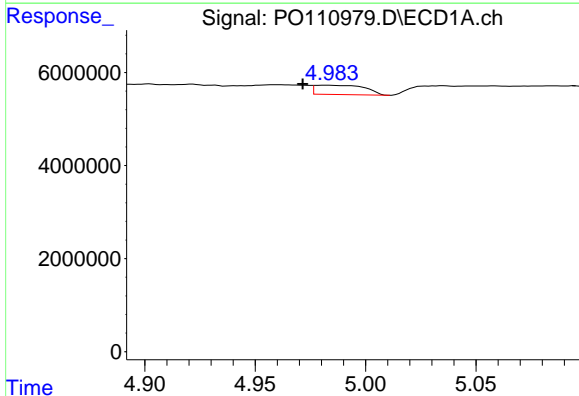
R.T.: 4.781 min
 Delta R.T.: -0.013 min
 Response: 5982295
 Conc: 37.60 ng/ml

Instrument :
 ECD_O
 ClientSampleId :
 I.BLK



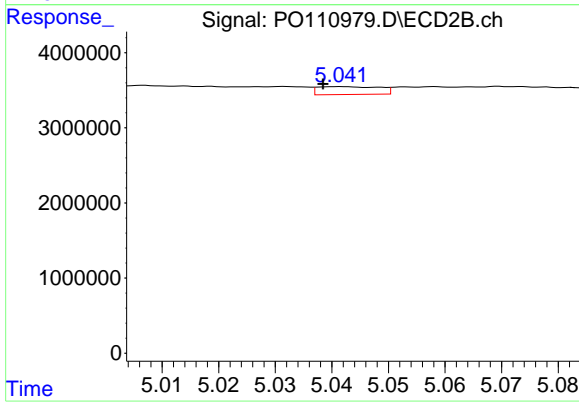
#13 AR-1232-3

R.T.: 4.955 min
 Delta R.T.: 0.001 min
 Response: 1976125
 Conc: 32.78 ng/ml



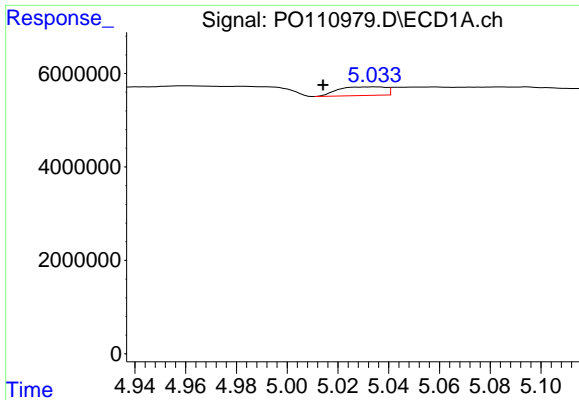
#14 AR-1232-4

R.T.: 4.983 min
 Delta R.T.: 0.011 min
 Response: 3151430
 Conc: 37.44 ng/ml



#14 AR-1232-4

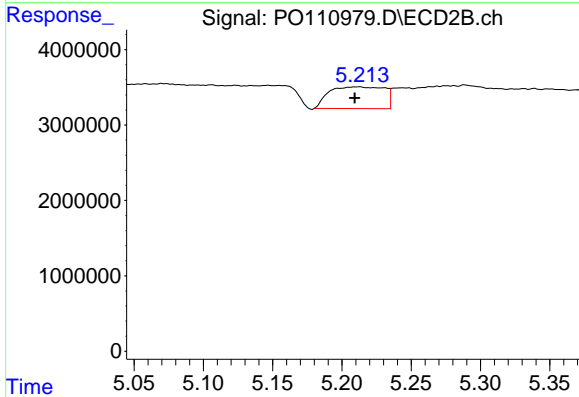
R.T.: 5.042 min
 Delta R.T.: 0.003 min
 Response: 794067
 Conc: 14.25 ng/ml



#15 AR-1232-5

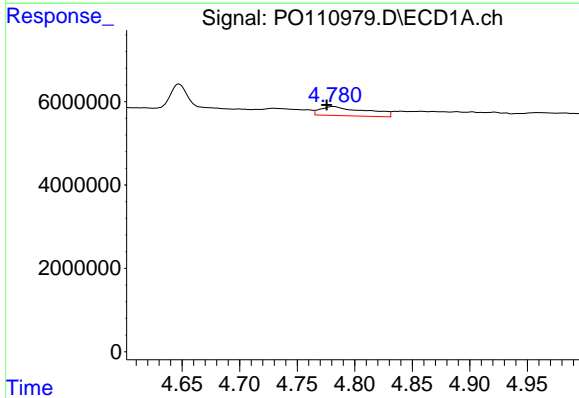
R.T.: 5.035 min
 Delta R.T.: 0.021 min
 Response: 2362297
 Conc: 40.13 ng/ml

Instrument :
 ECD_O
 ClientSampleId :
 I.BLK



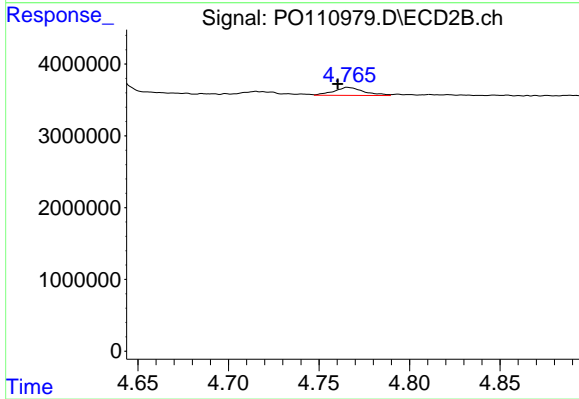
#15 AR-1232-5

R.T.: 5.212 min
 Delta R.T.: 0.003 min
 Response: 7973384
 Conc: 135.45 ng/ml



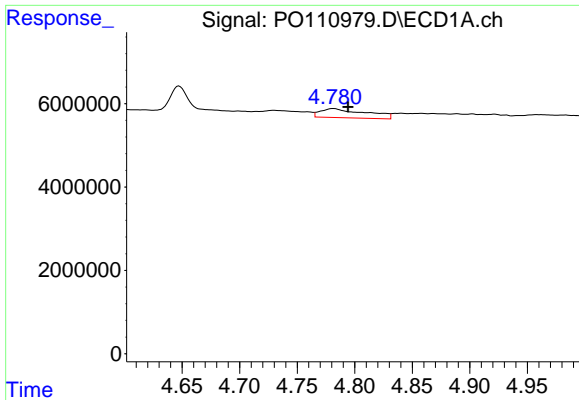
#16 AR-1242-1

R.T.: 4.781 min
 Delta R.T.: 0.006 min
 Response: 5982295
 Conc: 32.53 ng/ml



#16 AR-1242-1

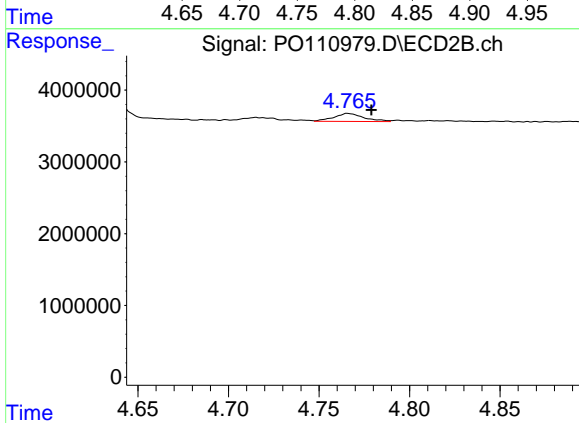
R.T.: 4.766 min
 Delta R.T.: 0.006 min
 Response: 1282294
 Conc: 9.69 ng/ml



#17 AR-1242-2

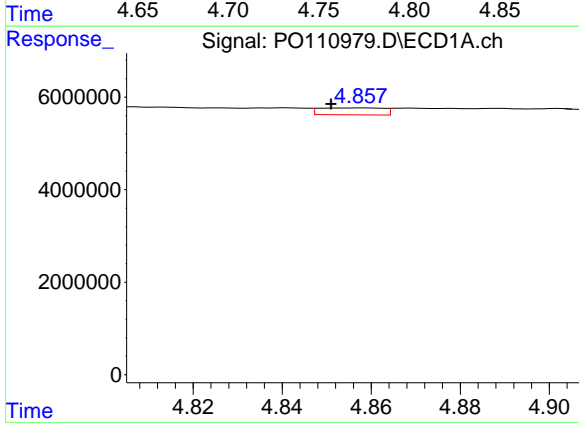
R.T.: 4.781 min
 Delta R.T.: -0.013 min
 Response: 5982295
 Conc: 23.22 ng/ml

Instrument :
 ECD_O
 ClientSampleId :
 I.BLK



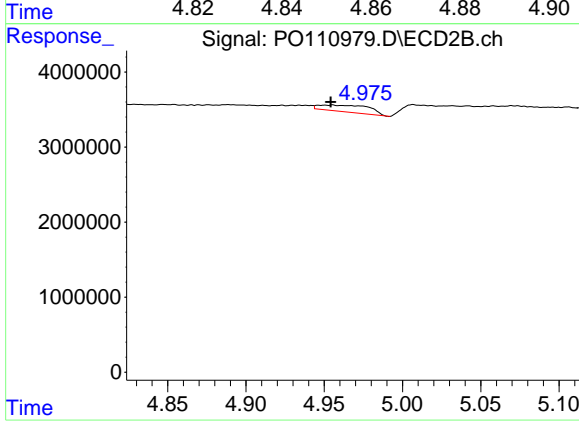
#17 AR-1242-2

R.T.: 4.766 min
 Delta R.T.: -0.013 min
 Response: 1282294
 Conc: 6.75 ng/ml



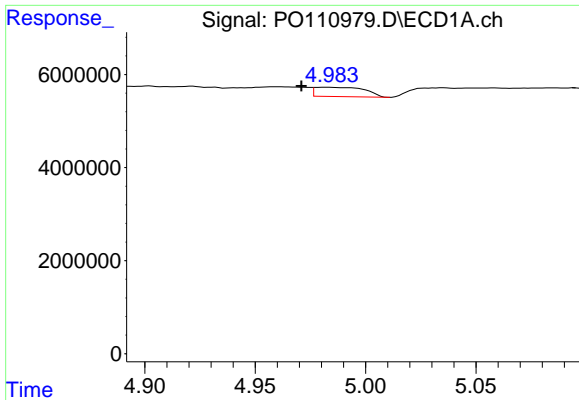
#18 AR-1242-3

R.T.: 4.858 min
 Delta R.T.: 0.007 min
 Response: 1494744
 Conc: 8.21 ng/ml



#18 AR-1242-3

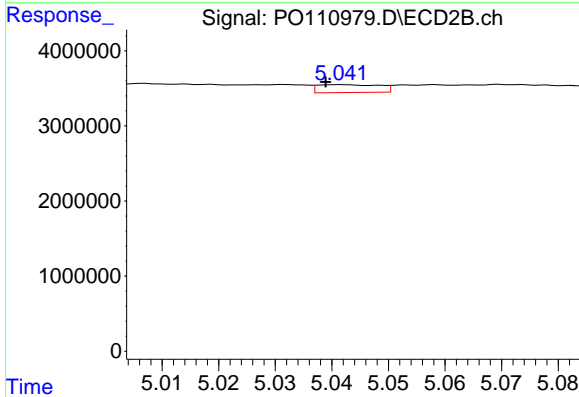
R.T.: 4.955 min
 Delta R.T.: 0.001 min
 Response: 1976125
 Conc: 19.50 ng/ml



#19 AR-1242-4

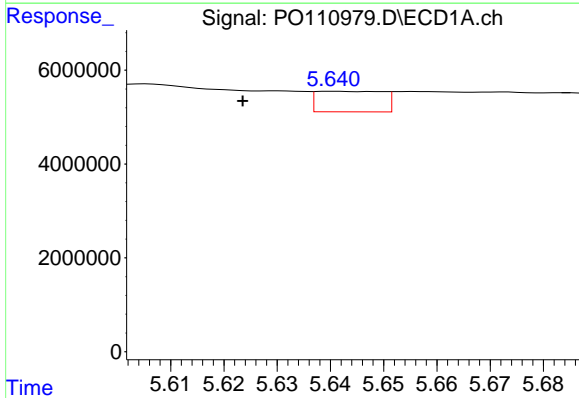
R.T.: 4.983 min
 Delta R.T.: 0.012 min
 Response: 3151430
 Conc: 22.57 ng/ml

Instrument :
 ECD_O
 ClientSampleId :
 I.BLK



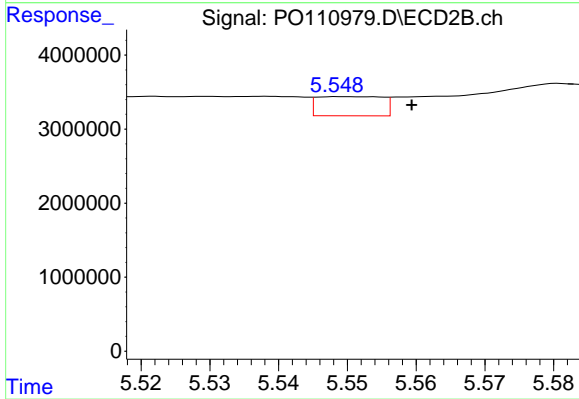
#19 AR-1242-4

R.T.: 5.042 min
 Delta R.T.: 0.003 min
 Response: 794067
 Conc: 7.66 ng/ml



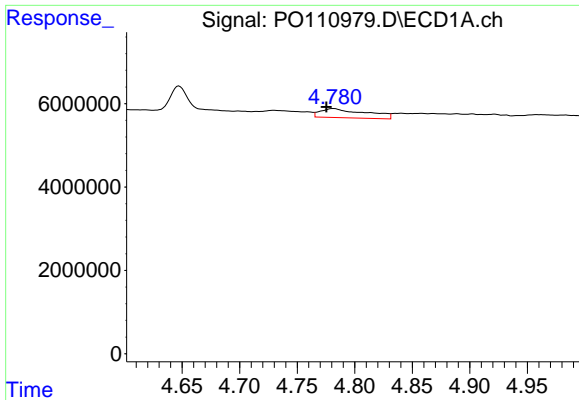
#20 AR-1242-5

R.T.: 5.641 min
 Delta R.T.: 0.017 min
 Response: 3804899
 Conc: 24.41 ng/ml



#20 AR-1242-5

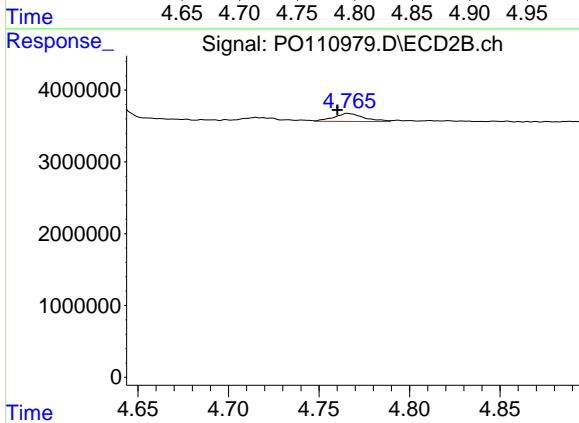
R.T.: 5.549 min
 Delta R.T.: -0.010 min
 Response: 1713443
 Conc: 13.54 ng/ml



#21 AR-1248-1

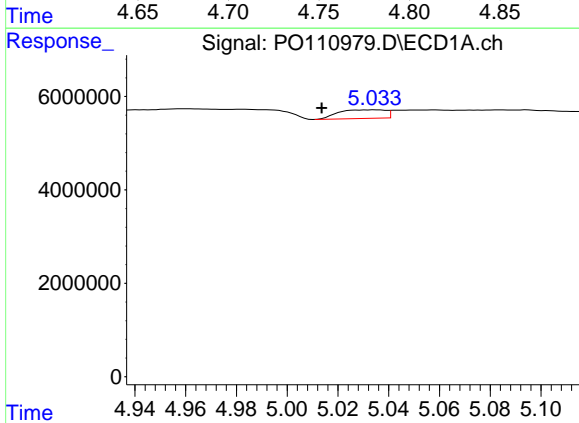
R.T.: 4.781 min
 Delta R.T.: 0.006 min
 Response: 5982295
 Conc: 45.54 ng/ml

Instrument :
 ECD_O
 ClientSampleId :
 I.BLK



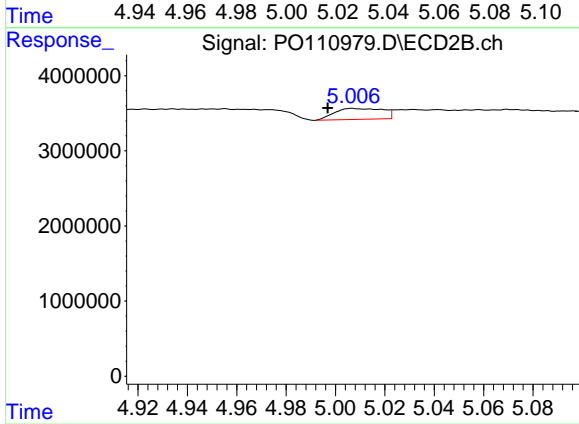
#21 AR-1248-1

R.T.: 4.766 min
 Delta R.T.: 0.006 min
 Response: 1282294
 Conc: 13.31 ng/ml



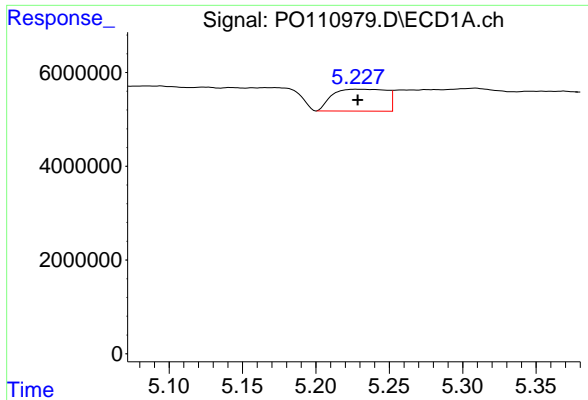
#22 AR-1248-2

R.T.: 5.035 min
 Delta R.T.: 0.021 min
 Response: 2362297
 Conc: 13.48 ng/ml



#22 AR-1248-2

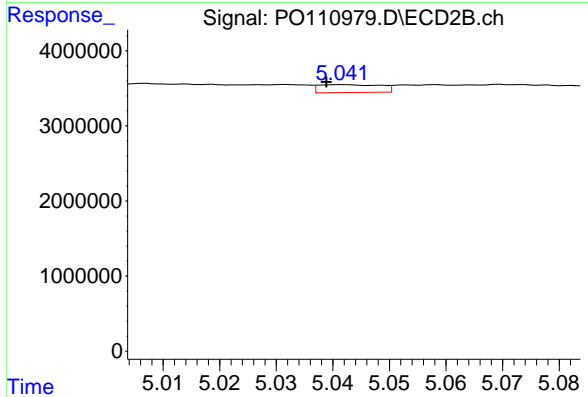
R.T.: 5.007 min
 Delta R.T.: 0.010 min
 Response: 1975060
 Conc: 14.62 ng/ml



#23 AR-1248-3

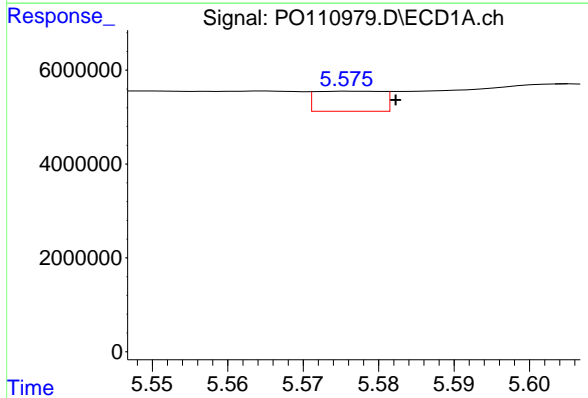
R.T.: 5.228 min
 Delta R.T.: 0.000 min
 Response: 11917859
 Conc: 54.06 ng/ml

Instrument :
 ECD_O
 ClientSampleId :
 I.BLK



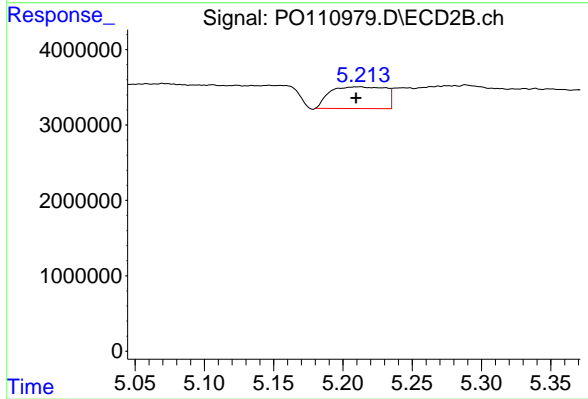
#23 AR-1248-3

R.T.: 5.042 min
 Delta R.T.: 0.003 min
 Response: 794067
 Conc: 5.47 ng/ml



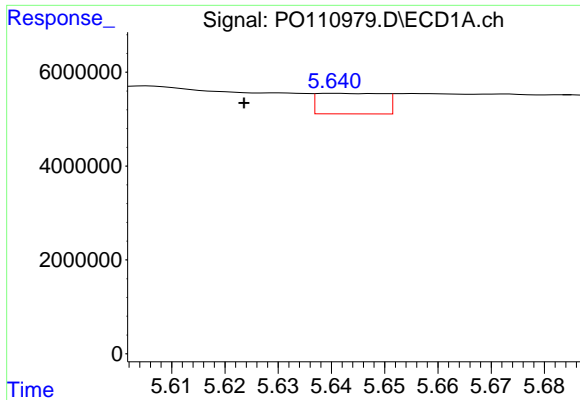
#24 AR-1248-4

R.T.: 5.577 min
 Delta R.T.: -0.006 min
 Response: 2643437
 Conc: 8.07 ng/ml



#24 AR-1248-4

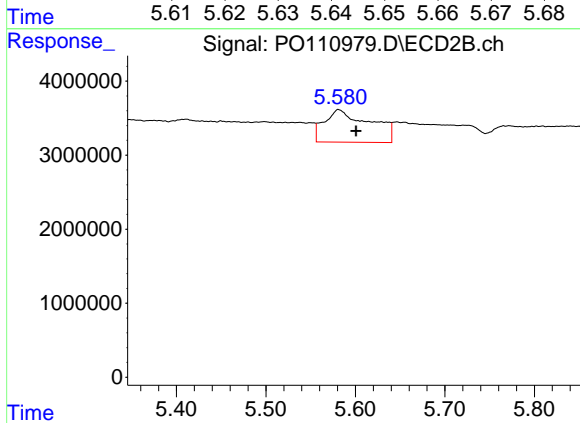
R.T.: 5.212 min
 Delta R.T.: 0.002 min
 Response: 7973384
 Conc: 47.60 ng/ml



#25 AR-1248-5

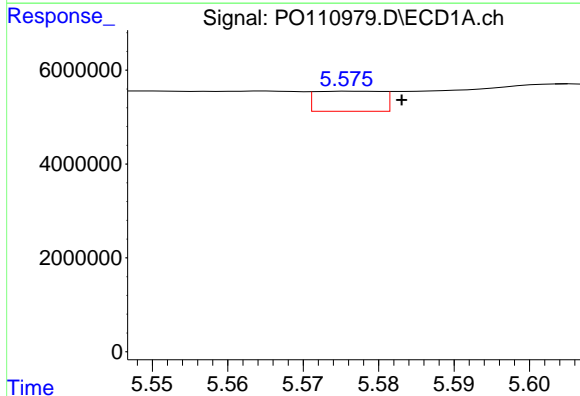
R.T.: 5.641 min
 Delta R.T.: 0.017 min
 Response: 3804899
 Conc: 16.30 ng/ml

Instrument :
 ECD_O
 ClientSampleId :
 I.BLK



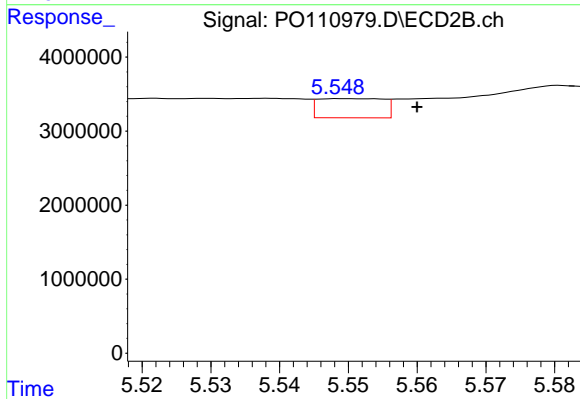
#25 AR-1248-5

R.T.: 5.581 min
 Delta R.T.: -0.019 min
 Response: 15641023
 Conc: 93.17 ng/ml



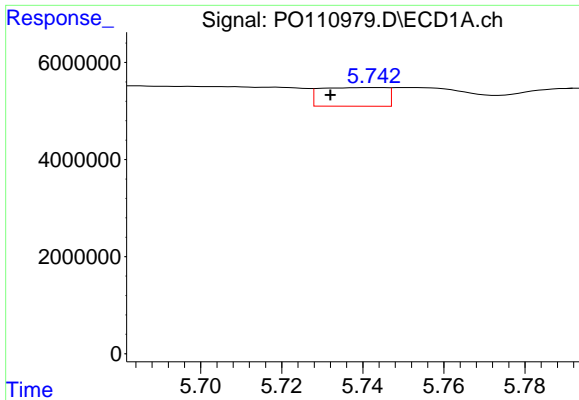
#26 AR-1254-1

R.T.: 5.577 min
 Delta R.T.: -0.007 min
 Response: 2643437
 Conc: 7.83 ng/ml



#26 AR-1254-1

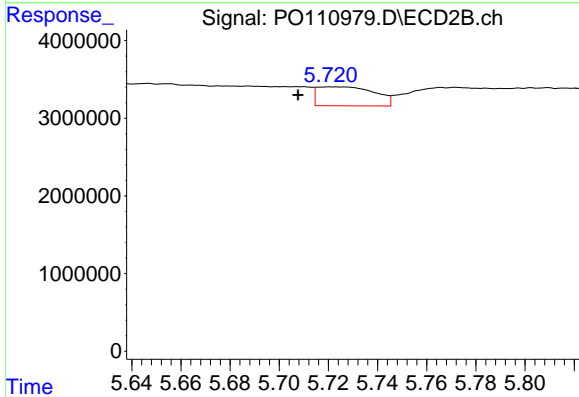
R.T.: 5.549 min
 Delta R.T.: -0.011 min
 Response: 1713443
 Conc: 6.83 ng/ml



#27 AR-1254-2

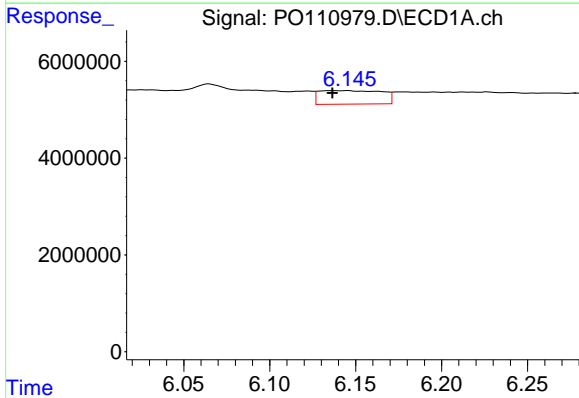
R.T.: 5.743 min
 Delta R.T.: 0.011 min
 Response: 4331564
 Conc: 15.06 ng/ml

Instrument :
 ECD_O
 ClientSampleId :
 I.BLK



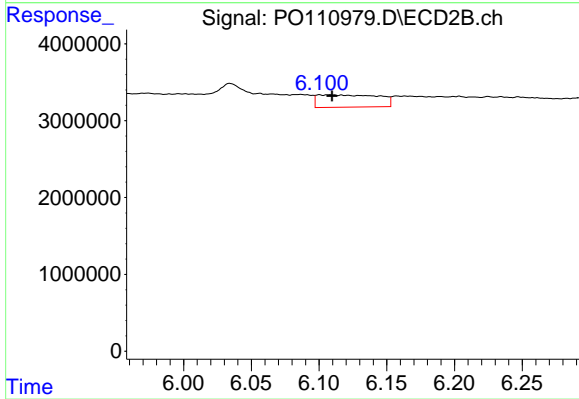
#27 AR-1254-2

R.T.: 5.722 min
 Delta R.T.: 0.014 min
 Response: 3949117
 Conc: 18.10 ng/ml



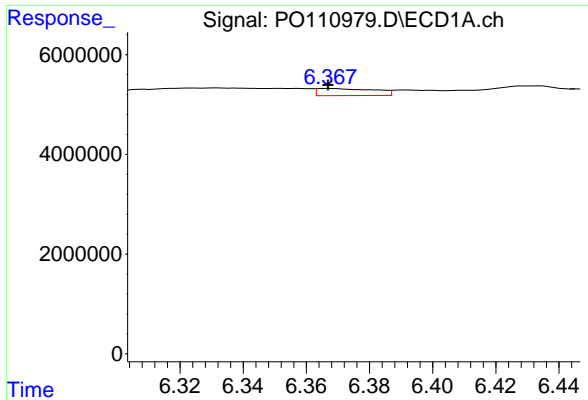
#28 AR-1254-3

R.T.: 6.137 min
 Delta R.T.: 0.000 min
 Response: 7123743
 Conc: 15.58 ng/ml



#28 AR-1254-3

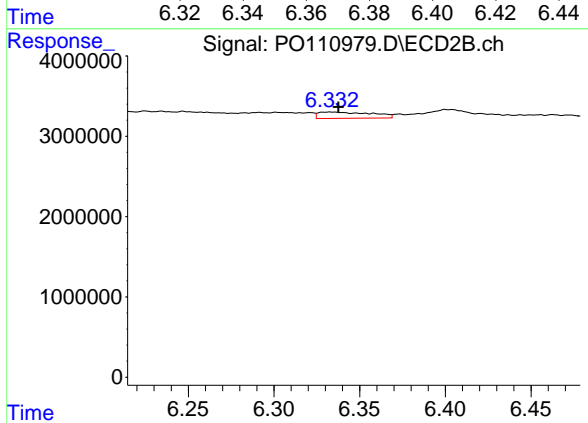
R.T.: 6.100 min
 Delta R.T.: -0.009 min
 Response: 5012497
 Conc: 15.00 ng/ml



#29 AR-1254-4

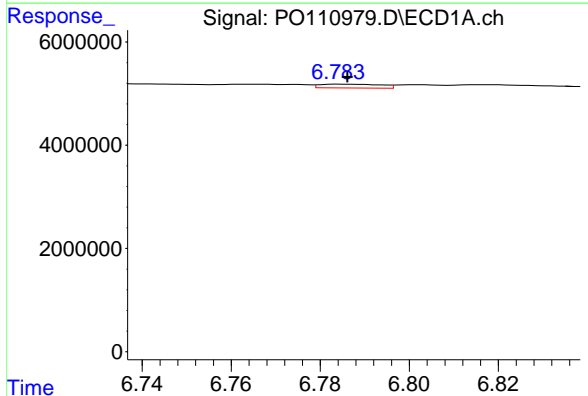
R.T.: 6.368 min
 Delta R.T.: 0.000 min
 Response: 1809233
 Conc: 5.94 ng/ml

Instrument :
 ECD_O
 ClientSampleId :
 I.BLK



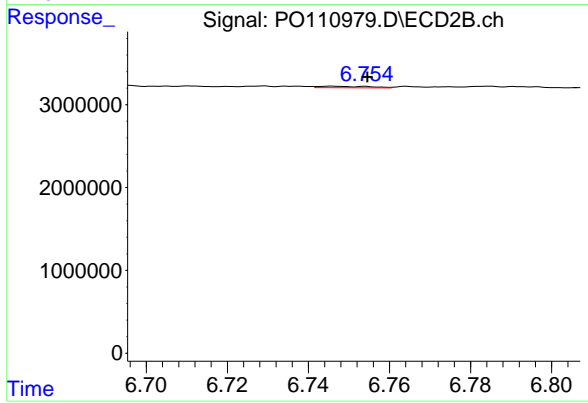
#29 AR-1254-4

R.T.: 6.333 min
 Delta R.T.: -0.004 min
 Response: 1705304
 Conc: 8.78 ng/ml



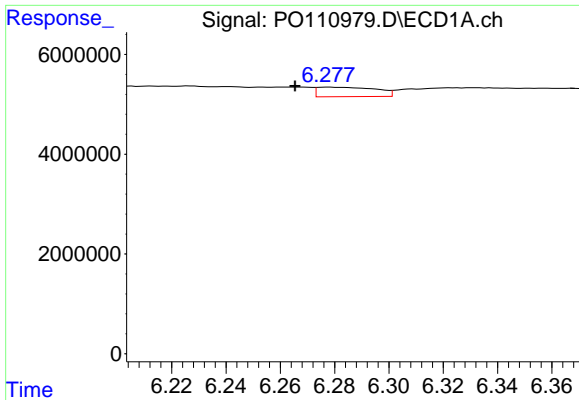
#30 AR-1254-5

R.T.: 6.785 min
 Delta R.T.: -0.001 min
 Response: 710484
 Conc: 1.68 ng/ml



#30 AR-1254-5

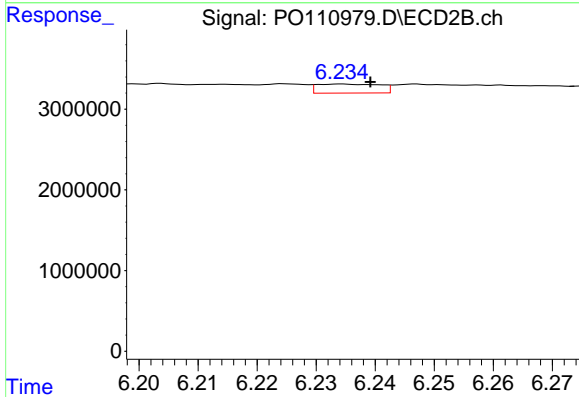
R.T.: 6.746 min
 Delta R.T.: -0.008 min
 Response: 163229
 Conc: 0.61 ng/ml



#31 AR-1260-1

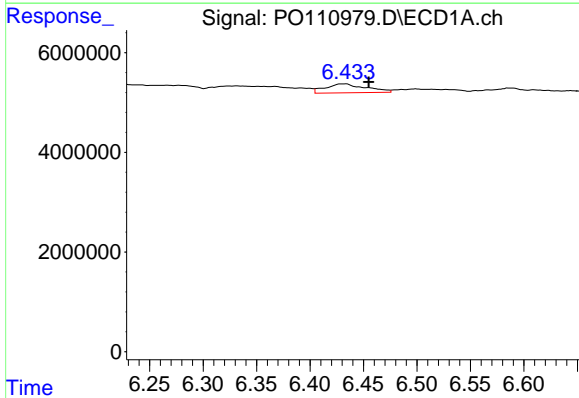
R.T.: 6.278 min
 Delta R.T.: 0.012 min
 Response: 2864514
 Conc: 8.61 ng/ml

Instrument :
 ECD_O
 ClientSampleId :
 I.BLK



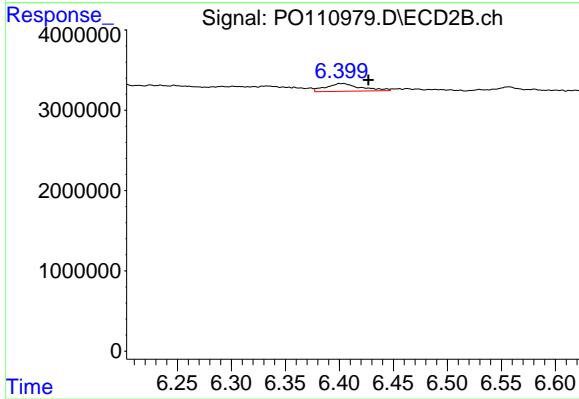
#31 AR-1260-1

R.T.: 6.234 min
 Delta R.T.: -0.005 min
 Response: 827237
 Conc: 3.75 ng/ml



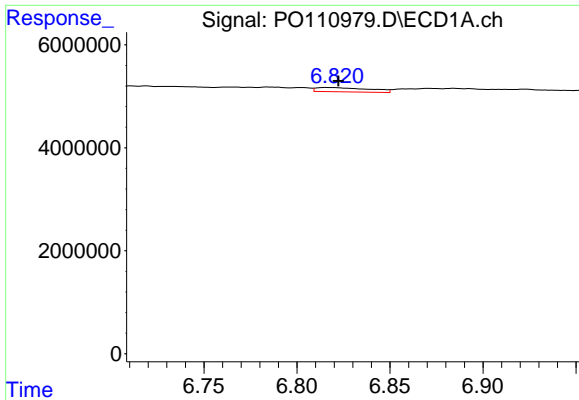
#32 AR-1260-2

R.T.: 6.433 min
 Delta R.T.: -0.022 min
 Response: 4721220
 Conc: 11.38 ng/ml



#32 AR-1260-2

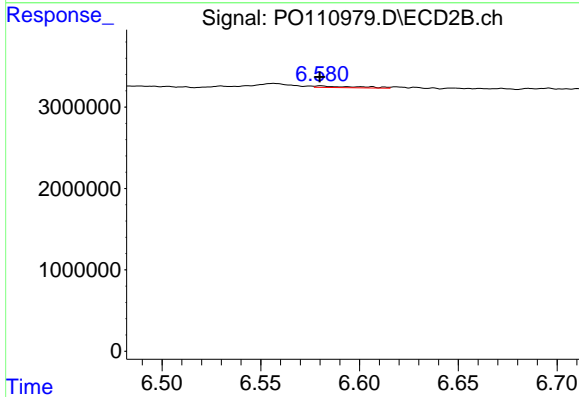
R.T.: 6.401 min
 Delta R.T.: -0.026 min
 Response: 2142247
 Conc: 8.33 ng/ml



#33 AR-1260-3

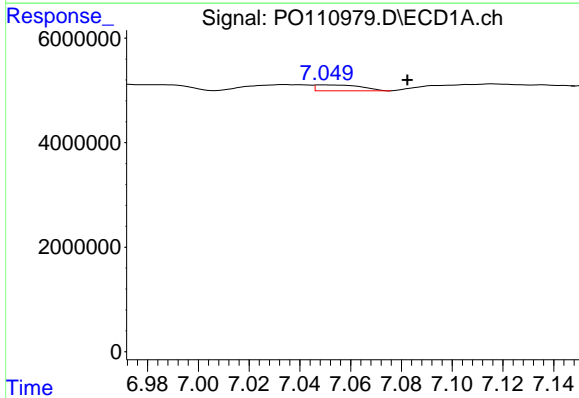
R.T.: 6.816 min
 Delta R.T.: -0.006 min
 Response: 1627165
 Conc: 4.62 ng/ml

Instrument :
 ECD_O
 ClientSampleId :
 I.BLK



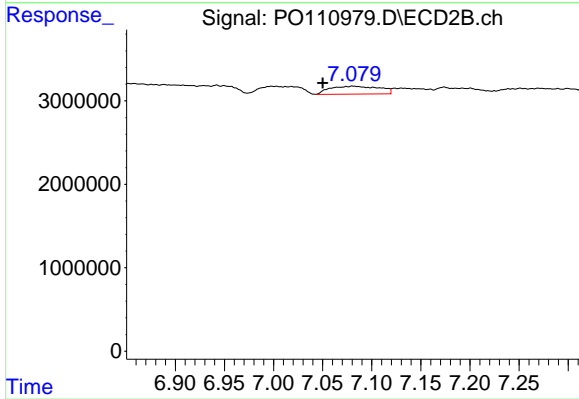
#33 AR-1260-3

R.T.: 6.580 min
 Delta R.T.: 0.000 min
 Response: 266899
 Conc: 1.14 ng/ml



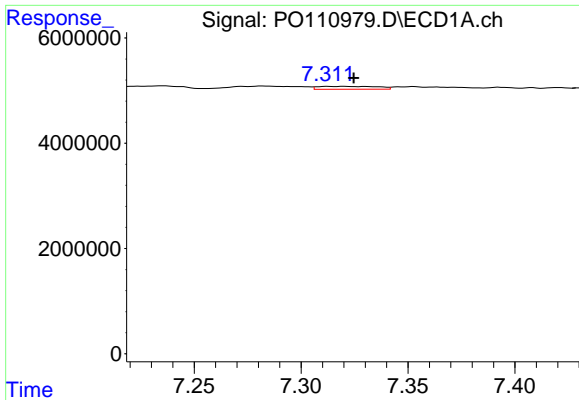
#34 AR-1260-4

R.T.: 7.049 min
 Delta R.T.: -0.033 min
 Response: 1385080
 Conc: 4.55 ng/ml



#34 AR-1260-4

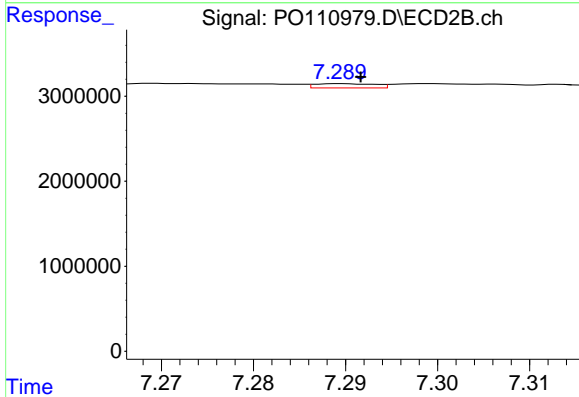
R.T.: 7.081 min
 Delta R.T.: 0.031 min
 Response: 3312162
 Conc: 18.19 ng/ml



#35 AR-1260-5

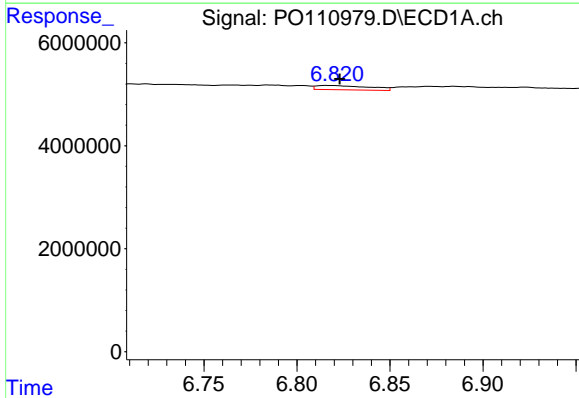
R.T.: 7.320 min
 Delta R.T.: -0.004 min
 Response: 1070142
 Conc: 1.46 ng/ml

Instrument :
 ECD_O
 ClientSampleId :
 I.BLK



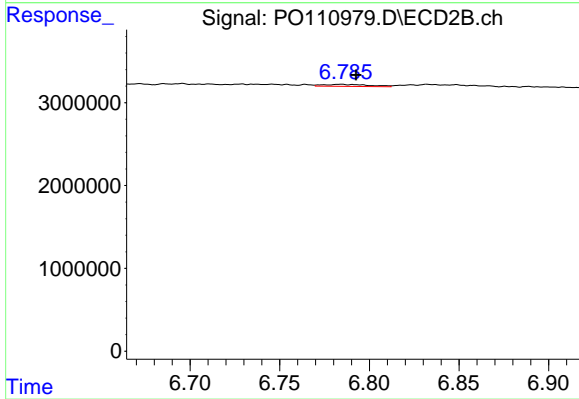
#35 AR-1260-5

R.T.: 7.290 min
 Delta R.T.: -0.002 min
 Response: 230047
 Conc: 0.59 ng/ml



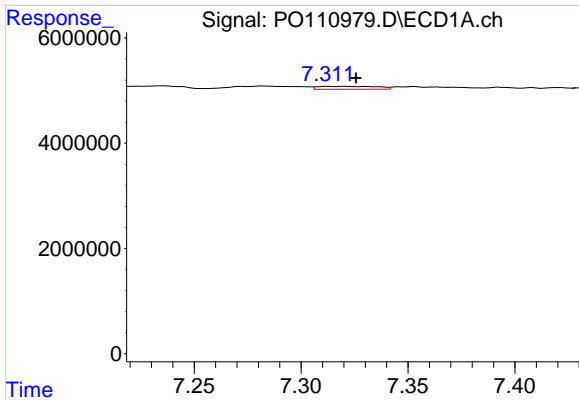
#36 AR-1262-1

R.T.: 6.816 min
 Delta R.T.: -0.006 min
 Response: 1627165
 Conc: 3.53 ng/ml



#36 AR-1262-1

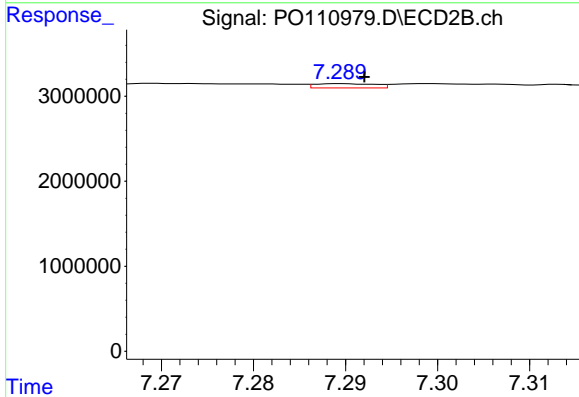
R.T.: 6.784 min
 Delta R.T.: -0.008 min
 Response: 417876
 Conc: 1.48 ng/ml



#37 AR-1262-2

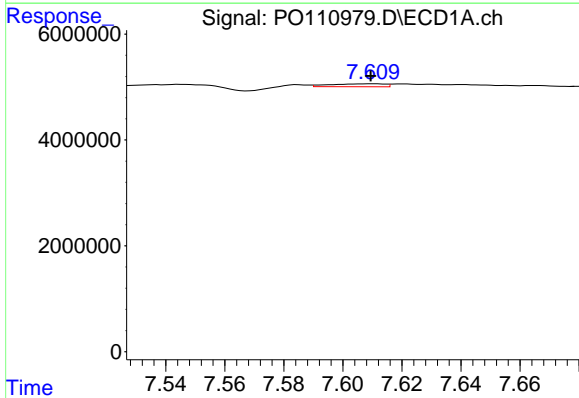
R.T.: 7.320 min
 Delta R.T.: -0.005 min
 Response: 1070142
 Conc: 1.36 ng/ml

Instrument :
 ECD_O
 ClientSampleId :
 I.BLK



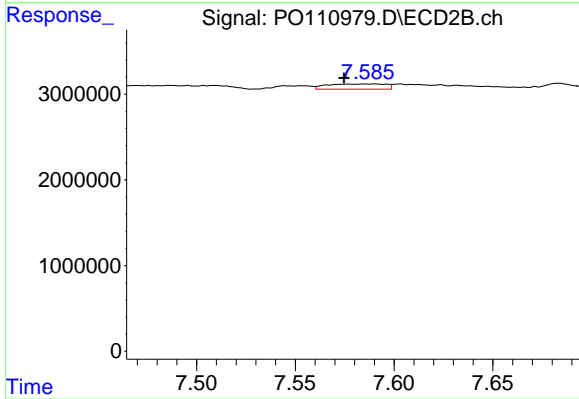
#37 AR-1262-2

R.T.: 7.290 min
 Delta R.T.: -0.003 min
 Response: 230047
 Conc: 0.52 ng/ml



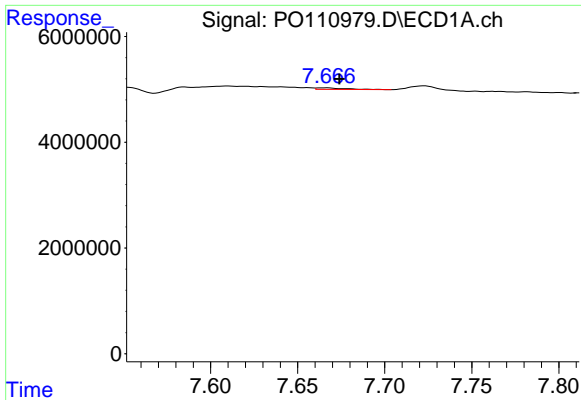
#38 AR-1262-3

R.T.: 7.610 min
 Delta R.T.: 0.000 min
 Response: 736284
 Conc: 2.20 ng/ml



#38 AR-1262-3

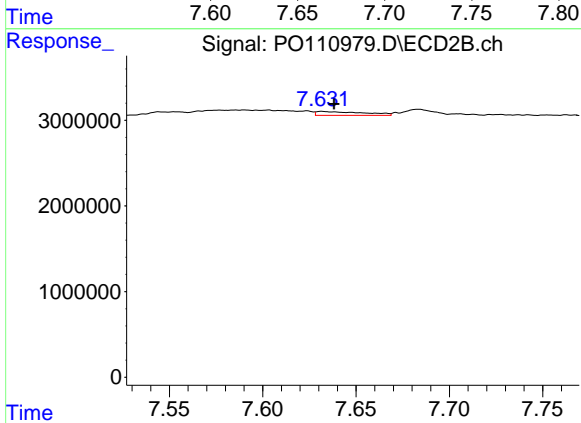
R.T.: 7.590 min
 Delta R.T.: 0.016 min
 Response: 1269887
 Conc: 7.82 ng/ml



#39 AR-1262-4

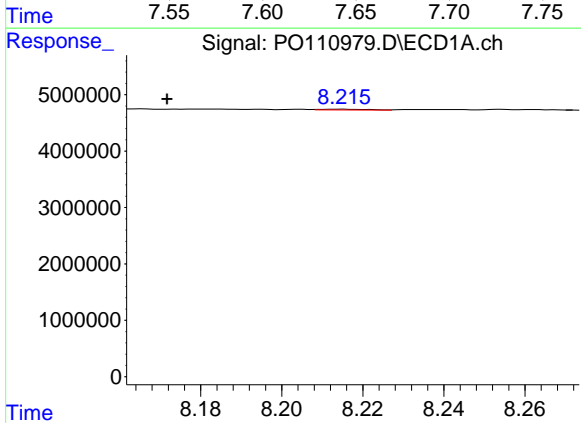
R.T.: 7.665 min
 Delta R.T.: -0.009 min
 Response: 352587
 Conc: 0.61 ng/ml

Instrument :
 ECD_O
 ClientSampleId :
 I.BLK



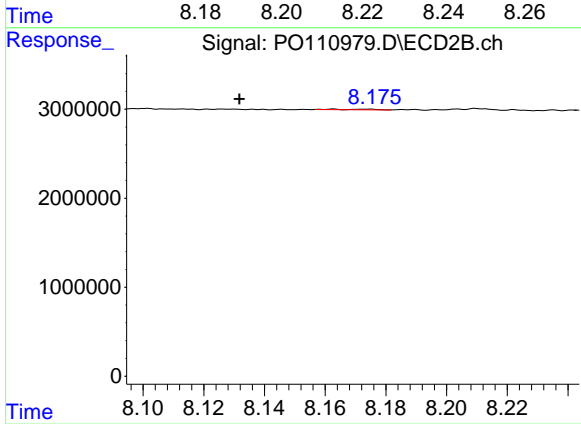
#39 AR-1262-4

R.T.: 7.632 min
 Delta R.T.: -0.007 min
 Response: 787863
 Conc: 2.71 ng/ml



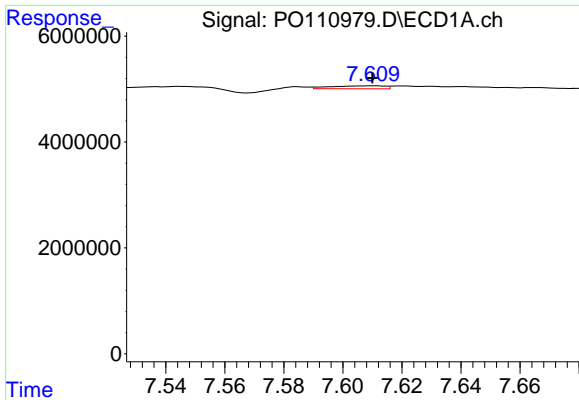
#40 AR-1262-5

R.T.: 8.215 min
 Delta R.T.: 0.043 min
 Response: 123193
 Conc: 0.46 ng/ml



#40 AR-1262-5

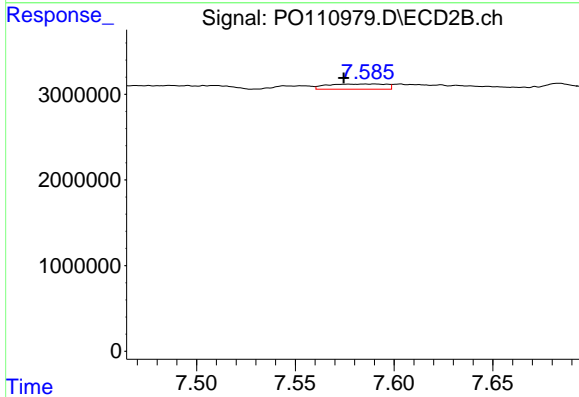
R.T.: 8.163 min
 Delta R.T.: 0.031 min
 Response: 58138
 Conc: 0.59 ng/ml



#41 AR-1268-1

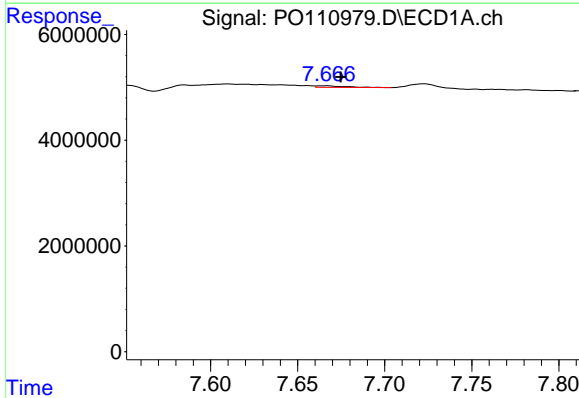
R.T.: 7.610 min
 Delta R.T.: 0.000 min
 Response: 736284
 Conc: 0.83 ng/ml

Instrument :
 ECD_O
 ClientSampleId :
 I.BLK



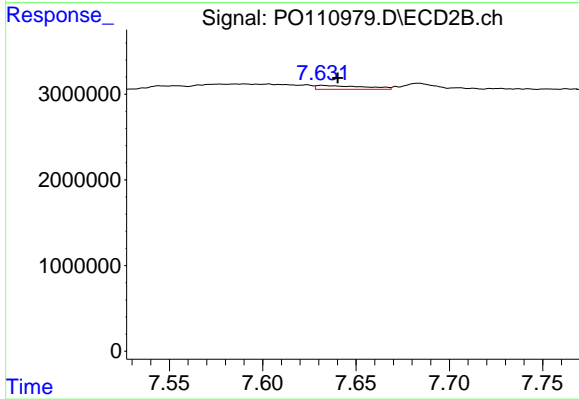
#41 AR-1268-1

R.T.: 7.590 min
 Delta R.T.: 0.016 min
 Response: 1269887
 Conc: 2.95 ng/ml



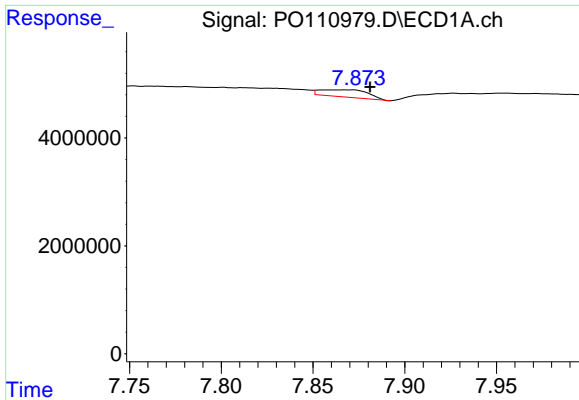
#42 AR-1268-2

R.T.: 7.665 min
 Delta R.T.: -0.010 min
 Response: 352587
 Conc: 0.44 ng/ml



#42 AR-1268-2

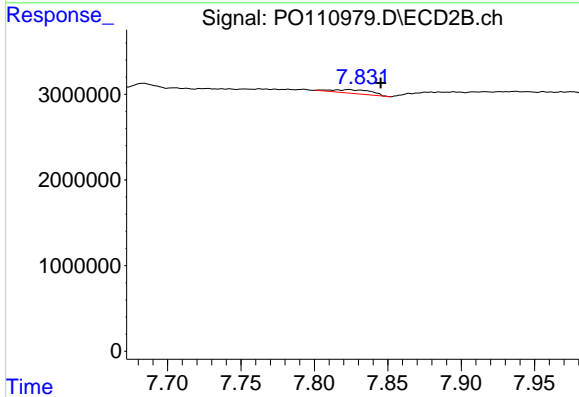
R.T.: 7.632 min
 Delta R.T.: -0.008 min
 Response: 787863
 Conc: 2.05 ng/ml



#43 AR-1268-3

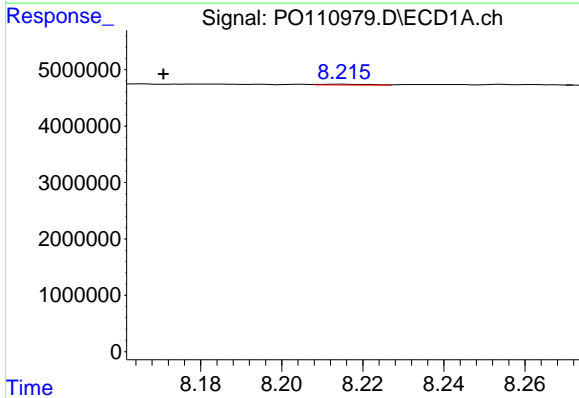
R.T.: 7.871 min
 Delta R.T.: -0.010 min
 Response: 2450953
 Conc: 3.57 ng/ml

Instrument :
 ECD_O
 ClientSampleId :
 I.BLK



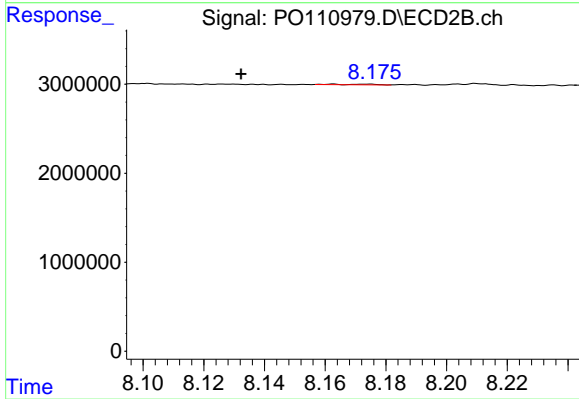
#43 AR-1268-3

R.T.: 7.824 min
 Delta R.T.: -0.022 min
 Response: 811611
 Conc: 2.86 ng/ml



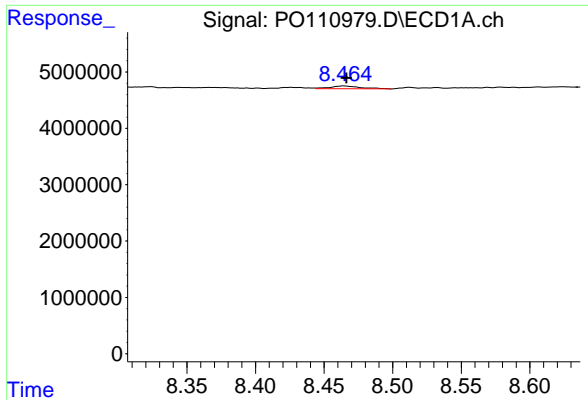
#44 AR-1268-4

R.T.: 8.215 min
 Delta R.T.: 0.044 min
 Response: 123193
 Conc: 0.44 ng/ml



#44 AR-1268-4

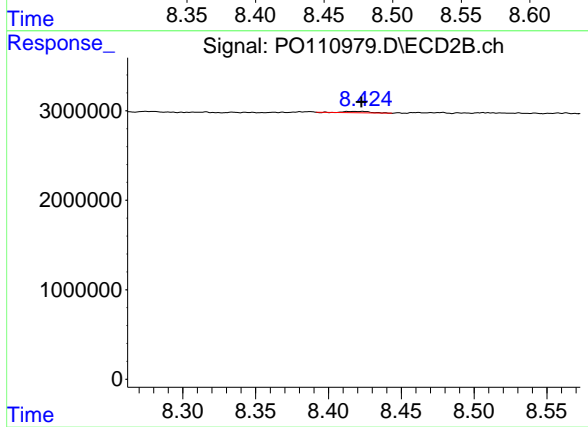
R.T.: 8.163 min
 Delta R.T.: 0.030 min
 Response: 58138
 Conc: 0.56 ng/ml



#45 AR-1268-5

R.T.: 8.464 min
 Delta R.T.: -0.002 min
 Response: 768044
 Conc: 0.38 ng/ml

Instrument :
 ECD_O
 ClientSampleId :
 I.BLK



#45 AR-1268-5

R.T.: 8.424 min
 Delta R.T.: 0.001 min
 Response: 195716
 Conc: 0.32 ng/ml