

Data Path : Z:\pestpcbsrv\HPCHEM1\ECD\_0\Data\P0050825\  
 Data File : PO110986.D  
 Signal(s) : Signal #1: ECD1A.ch Signal #2: ECD2B.ch  
 Acq On : 09 May 2025 07:54  
 Operator : YP/AJ  
 Sample : AR1254CCC500  
 Misc :  
 ALS Vial : 6 Sample Multiplier: 1

Instrument :  
 ECD\_0  
 ClientSampleId :  
 AR1254CCC500

Integration File signal 1: autoint1.e  
 Integration File signal 2: autoint2.e  
 Quant Time: May 09 08:16:48 2025  
 Quant Method : Z:\pestpcbsrv\HPCHEM1\ECD\_0\methods\P0050225.M  
 Quant Title : GC EXTRACTABLES  
 QLast Update : Fri May 02 23:47:49 2025  
 Response via : Initial Calibration  
 Integrator: ChemStation

Volume Inj. : 2 µl  
 Signal #1 Phase : ZB-MR1 Signal #2 Phase: ZB-MR2  
 Signal #1 Info : 30Mx0.32mmx 0.50µ Signal #2 Info : 30M x 0.32mm x 0.25µm

Compound	RT#1	RT#2	Resp#1	Resp#2	ng/ml	ng/ml
System Monitoring Compounds						
1) SA Tetrachlo...	3.685	3.681	318.3E6	294.0E6	55.640	60.715
2) SA Decachlor...	8.727	8.676	254.2E6	91180205	41.661	54.041 #
Target Compounds						
3) L1 AR-1016-1	4.775	4.759	4198655	3225119	18.997	20.299
4) L1 AR-1016-2	4.794	4.778	3342889	2622054	10.778	11.472
5) L1 AR-1016-3	4.850	4.955	3303799	1737371	14.446	14.248
6) L1 AR-1016-4	4.972	4.996	2716332	53805057	16.247	533.987 #
7) L1 AR-1016-5	5.228	5.208	66663202	52696676	374.326	401.032
8) L2 AR-1221-1	3.889	3.894	184905	147655	2.124	2.218
9) L2 AR-1221-2	3.986	3.979	5343917	4494104	78.922	87.551
10) L2 AR-1221-3	4.059	4.050	1074541	967437	5.433	6.322
11) L3 AR-1232-1	4.059	4.050	1074541	967437	6.996	8.236
12) L3 AR-1232-2	4.555	4.778	1452679	2622054	17.634	22.794 #
13) L3 AR-1232-3	4.794	4.955	3342889	1737371	21.013	28.819 #
14) L3 AR-1232-4	4.972	5.037	2716332	20322368	32.272	364.772 #
15) L3 AR-1232-5	5.012	5.208	58788226	52696676	998.571	895.216
16) L4 AR-1242-1	4.775	4.759	4198655	3225119	22.828	24.372
17) L4 AR-1242-2	4.794	4.778	3342889	2622054	12.977	13.795
18) L4 AR-1242-3	4.850	4.955	3303799	1737371	18.142	17.147
19) L4 AR-1242-4	4.972	5.037	2716332	20322368	19.451	195.953 #
20) L4 AR-1242-5	5.623	5.559	38439153	159.7E6	246.571	1261.621 #
21) L5 AR-1248-1	4.775	4.759	4198655	3225119	31.962	33.464
22) L5 AR-1248-2	5.012	4.996	58788226	53805057	335.487	398.197
23) L5 AR-1248-3	5.228	5.037	66663202	20322368	302.372	140.016 #
24) L5 AR-1248-4	5.583	5.208	192.1E6	52696676	586.202	314.577 #
25) L5 AR-1248-5	5.623	5.599	38439153	27648485	164.658	164.693
26) L6 AR-1254-1	5.583	5.559	192.1E6	159.7E6	569.085	636.107
27) L6 AR-1254-2	5.731	5.707	165.6E6	136.2E6	575.723	624.151
28) L6 AR-1254-3	6.137	6.109	245.3E6	197.5E6	536.430	591.091
29) L6 AR-1254-4	6.366	6.337	157.6E6	113.8E6	516.986	586.128
30) L6 AR-1254-5	6.785	6.754	215.9E6	153.1E6	511.720	570.640
31) L7 AR-1260-1	6.268	6.239	130.3E6	97118106	391.856	439.908
32) L7 AR-1260-2	6.457	6.427	106.3E6	74865781	256.312	291.048
33) L7 AR-1260-3	6.855	6.578	20258651	72627627	57.510	311.514 #
34) L7 AR-1260-4	7.084	7.050	12768713	7648527	41.970	42.003
35) L7 AR-1260-5	7.326	7.291	27311934	16589611	37.190	42.192
36) L8 AR-1262-1	6.855	6.822	20258651	13545128	44.000	47.963
37) L8 AR-1262-2	7.326	7.291	27311934	16589611	34.726	37.763
38) L8 AR-1262-3	7.612	7.574	3009778	2684840	9.009	16.536 #
39) L8 AR-1262-4	7.672	7.634	25763459	15745369	44.534	54.084
40) L8 AR-1262-5	8.172	8.132	1232607	412573	4.620	4.185
41) L9 AR-1268-1	7.612	7.574	3009778	2684840	3.382	6.230 #

Data Path : Z:\pestpcbsrv\HPCHEM1\ECD\_0\Data\P0050825\  
 Data File : P0110986.D  
 Signal(s) : Signal #1: ECD1A.ch Signal #2: ECD2B.ch  
 Acq On : 09 May 2025 07:54  
 Operator : YP/AJ  
 Sample : AR1254CCC500  
 Misc :  
 ALS Vial : 6 Sample Multiplier: 1

Instrument :  
 ECD\_0  
 ClientSampleId :  
 AR1254CCC500

Integration File signal 1: autoint1.e  
 Integration File signal 2: autoint2.e  
 Quant Time: May 09 08:16:48 2025  
 Quant Method : Z:\pestpcbsrv\HPCHEM1\ECD\_0\methods\P0050225.M  
 Quant Title : GC EXTRACTABLES  
 QLast Update : Fri May 02 23:47:49 2025  
 Response via : Initial Calibration  
 Integrator: ChemStation

Volume Inj. : 2 µl  
 Signal #1 Phase : ZB-MR1 Signal #2 Phase: ZB-MR2  
 Signal #1 Info : 30Mx0.32mmx 0.50µ Signal #2 Info : 30M x 0.32mm x 0.25µm

	Compound	RT#1	RT#2	Resp#1	Resp#2	ng/ml	ng/ml
42)	L9 AR-1268-2	7.672	7.634	25763459	15745369	32.106	41.017 #
43)	L9 AR-1268-3	7.881	7.843	1243827	661505	1.812	2.329 #
44)	L9 AR-1268-4	8.172	8.132	1232607	412573	4.434	3.962
45)	L9 AR-1268-5	8.467	8.422	2161976	673448	1.058	1.110

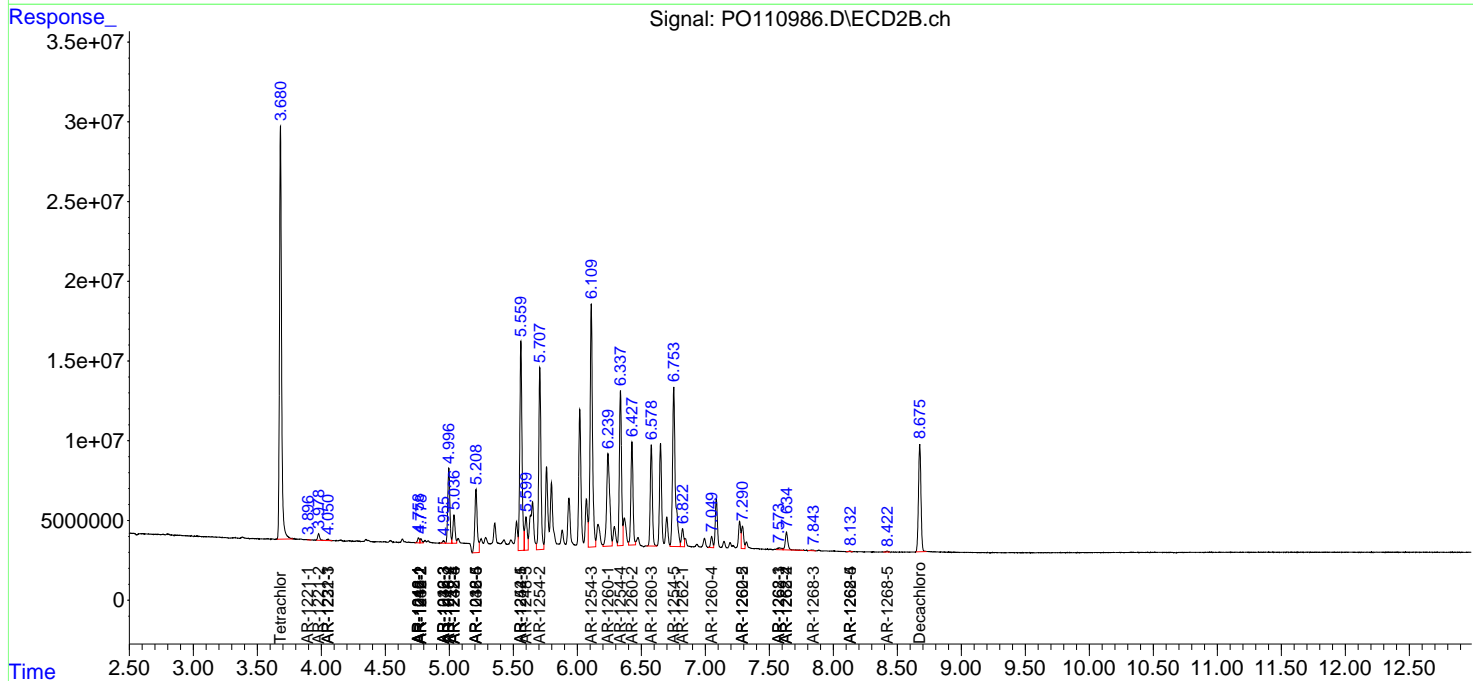
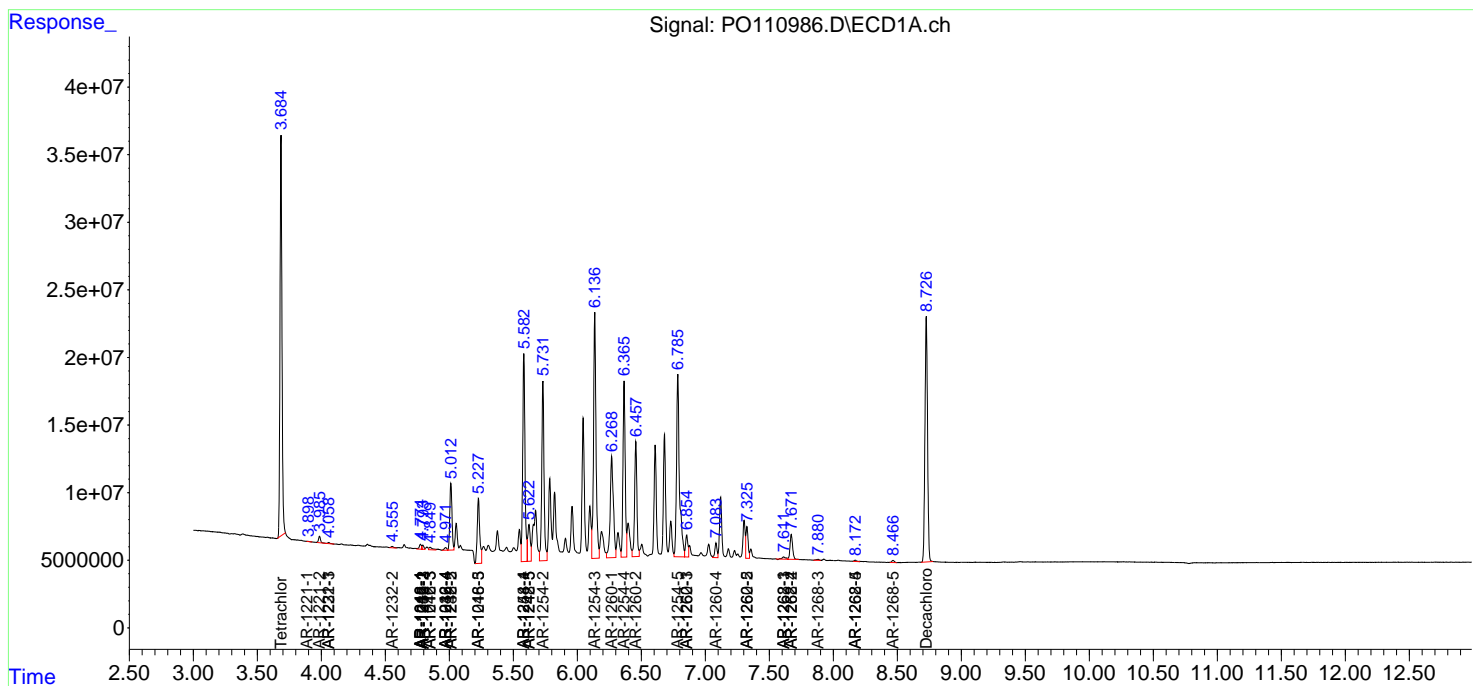
(f)=RT Delta > 1/2 Window (#)=Amounts differ by > 25% (m)=manual int.

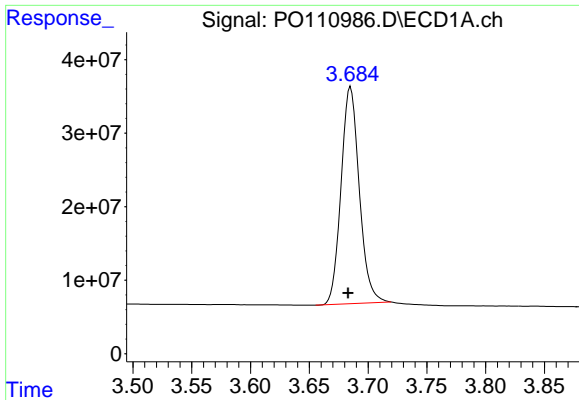
Data Path : Z:\pestpcbsrv\HPCHEM1\ECD\_O\Data\P0050825\  
 Data File : P0110986.D  
 Signal(s) : Signal #1: ECD1A.ch Signal #2: ECD2B.ch  
 Acq On : 09 May 2025 07:54  
 Operator : YP/AJ  
 Sample : AR1254CCC500  
 Misc :  
 ALS Vial : 6 Sample Multiplier: 1

Instrument :  
 ECD\_O  
 ClientSampleId :  
 AR1254CCC500

Integration File signal 1: autoint1.e  
 Integration File signal 2: autoint2.e  
 Quant Time: May 09 08:16:48 2025  
 Quant Method : Z:\pestpcbsrv\HPCHEM1\ECD\_O\methods\P0050225.M  
 Quant Title : GC EXTRACTABLES  
 QLast Update : Fri May 02 23:47:49 2025  
 Response via : Initial Calibration  
 Integrator: ChemStation

Volume Inj. : 2 µl  
 Signal #1 Phase : ZB-MR1 Signal #2 Phase: ZB-MR2  
 Signal #1 Info : 30Mx0.32mmx 0.50µ Signal #2 Info : 30M x 0.32mm x 0.25µm

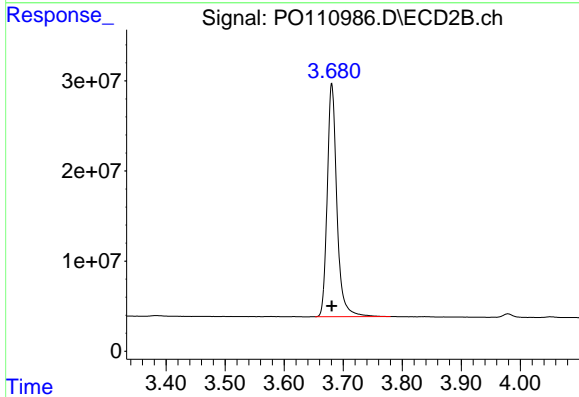




#1 Tetrachloro-m-xylene

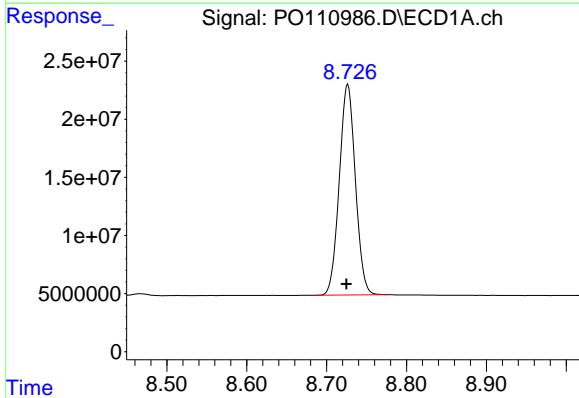
R.T.: 3.685 min  
 Delta R.T.: 0.002 min  
 Response: 318303910  
 Conc: 55.64 ng/ml

Instrument :  
 ECD\_O  
 ClientSampleId :  
 AR1254CCC500



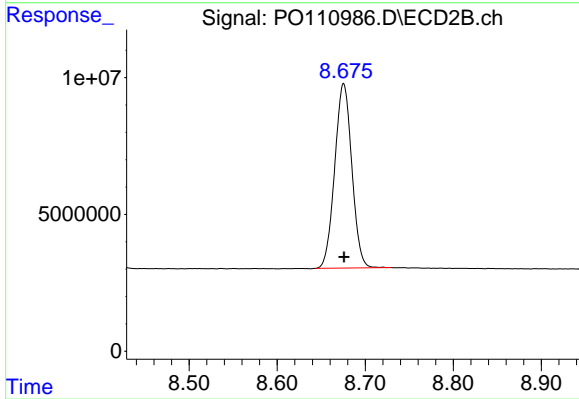
#1 Tetrachloro-m-xylene

R.T.: 3.681 min  
 Delta R.T.: 0.000 min  
 Response: 294048507  
 Conc: 60.71 ng/ml



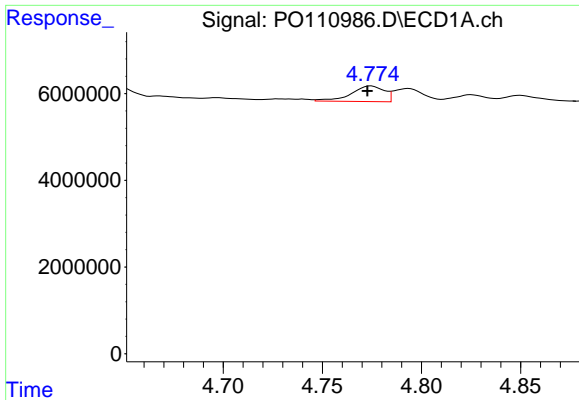
#2 Decachlorobiphenyl

R.T.: 8.727 min  
 Delta R.T.: 0.002 min  
 Response: 254233723  
 Conc: 41.66 ng/ml



#2 Decachlorobiphenyl

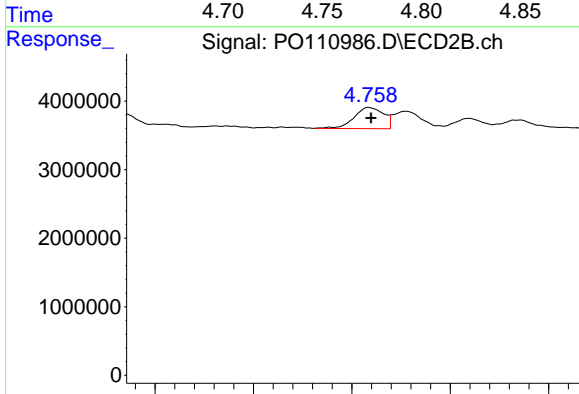
R.T.: 8.676 min  
 Delta R.T.: 0.000 min  
 Response: 91180205  
 Conc: 54.04 ng/ml



#3 AR-1016-1

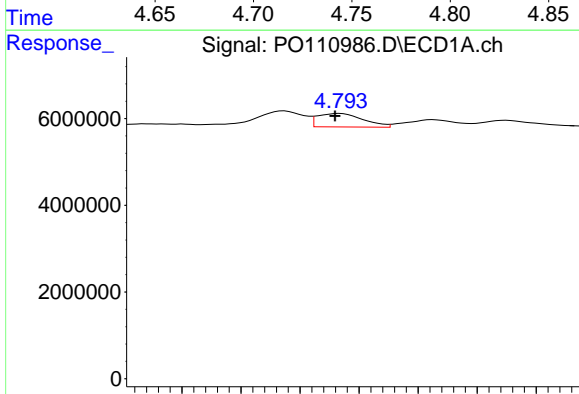
R.T.: 4.775 min  
 Delta R.T.: 0.002 min  
 Response: 4198655  
 Conc: 19.00 ng/ml

Instrument :  
 ECD\_O  
 ClientSampleId :  
 AR1254CCC500



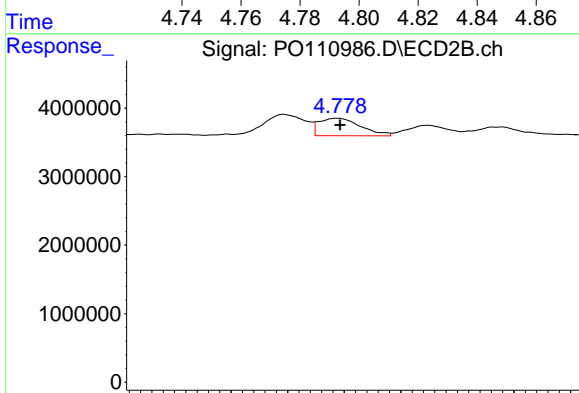
#3 AR-1016-1

R.T.: 4.759 min  
 Delta R.T.: 0.000 min  
 Response: 3225119  
 Conc: 20.30 ng/ml



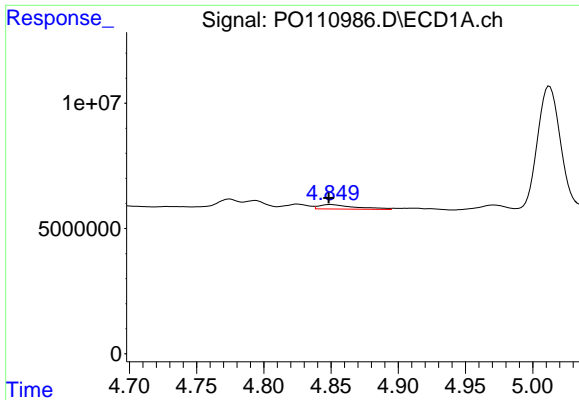
#4 AR-1016-2

R.T.: 4.794 min  
 Delta R.T.: 0.002 min  
 Response: 3342889  
 Conc: 10.78 ng/ml



#4 AR-1016-2

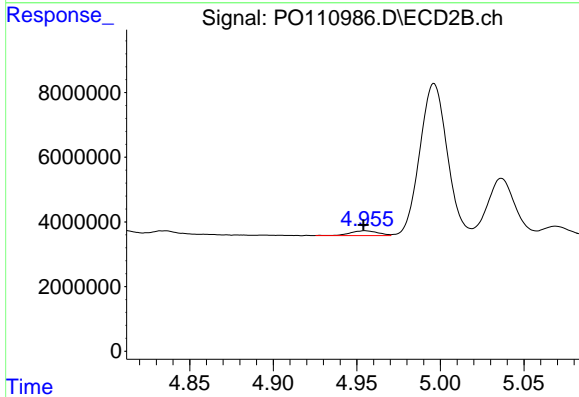
R.T.: 4.778 min  
 Delta R.T.: 0.000 min  
 Response: 2622054  
 Conc: 11.47 ng/ml



#5 AR-1016-3

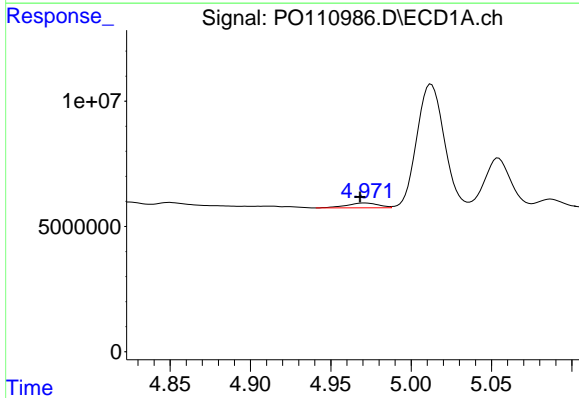
R.T.: 4.850 min  
 Delta R.T.: 0.002 min  
 Response: 3303799  
 Conc: 14.45 ng/ml

Instrument :  
 ECD\_O  
 ClientSampleId :  
 AR1254CCC500



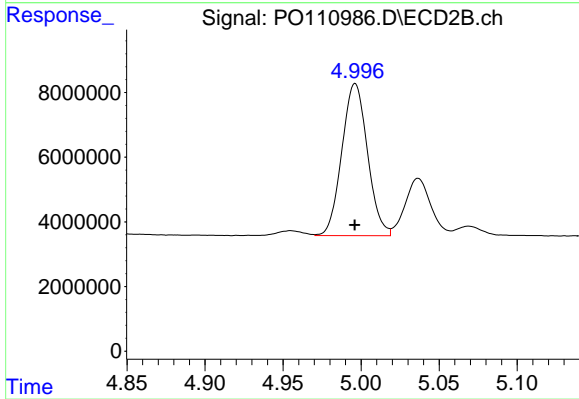
#5 AR-1016-3

R.T.: 4.955 min  
 Delta R.T.: 0.001 min  
 Response: 1737371  
 Conc: 14.25 ng/ml



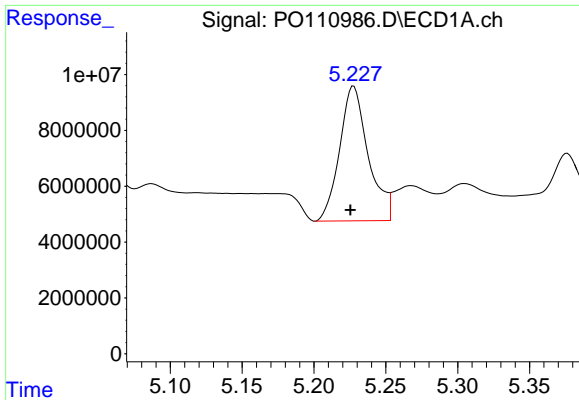
#6 AR-1016-4

R.T.: 4.972 min  
 Delta R.T.: 0.003 min  
 Response: 2716332  
 Conc: 16.25 ng/ml



#6 AR-1016-4

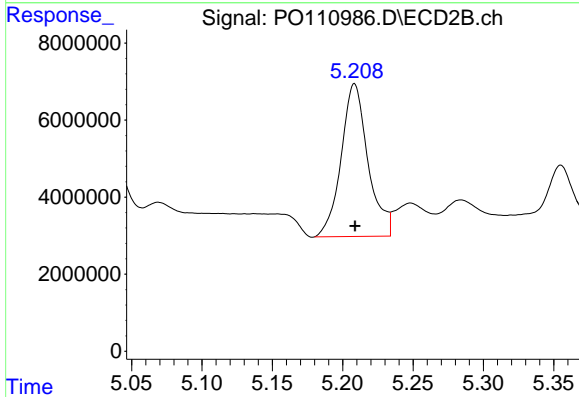
R.T.: 4.996 min  
 Delta R.T.: 0.000 min  
 Response: 53805057  
 Conc: 533.99 ng/ml



#7 AR-1016-5

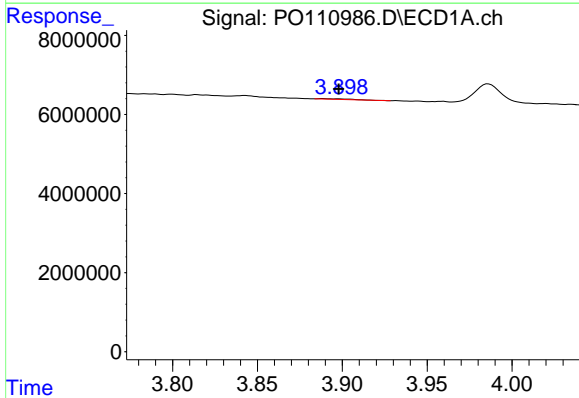
R.T.: 5.228 min  
 Delta R.T.: 0.002 min  
 Response: 66663202  
 Conc: 374.33 ng/ml

Instrument :  
 ECD\_O  
 ClientSampleId :  
 AR1254CCC500



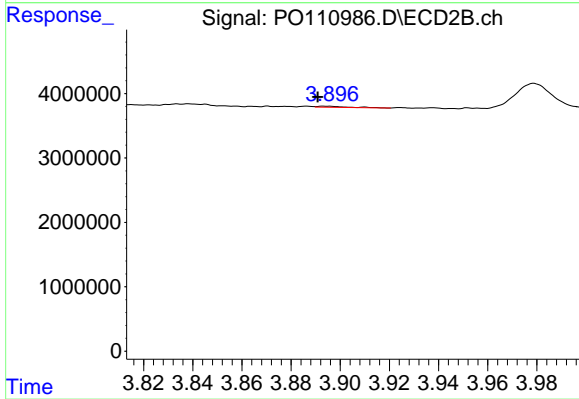
#7 AR-1016-5

R.T.: 5.208 min  
 Delta R.T.: 0.000 min  
 Response: 52696676  
 Conc: 401.03 ng/ml



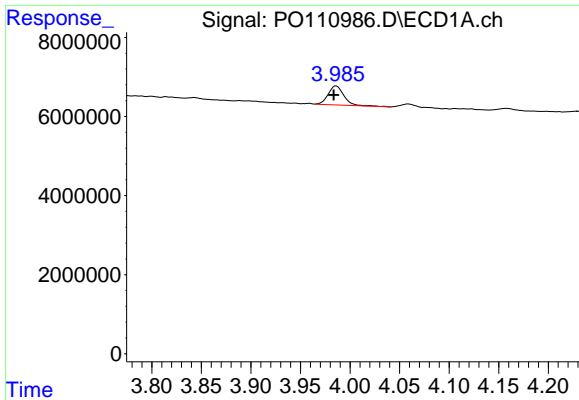
#8 AR-1221-1

R.T.: 3.889 min  
 Delta R.T.: -0.009 min  
 Response: 184905  
 Conc: 2.12 ng/ml



#8 AR-1221-1

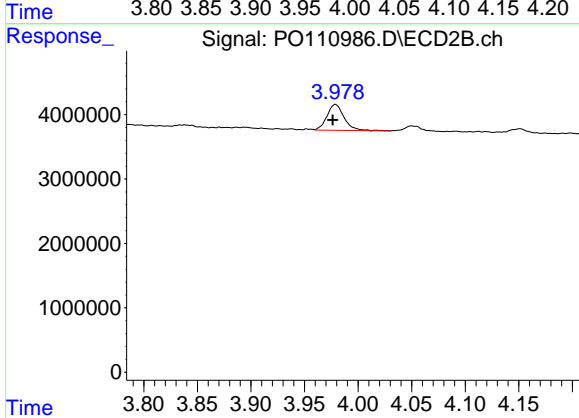
R.T.: 3.894 min  
 Delta R.T.: 0.003 min  
 Response: 147655  
 Conc: 2.22 ng/ml



#9 AR-1221-2

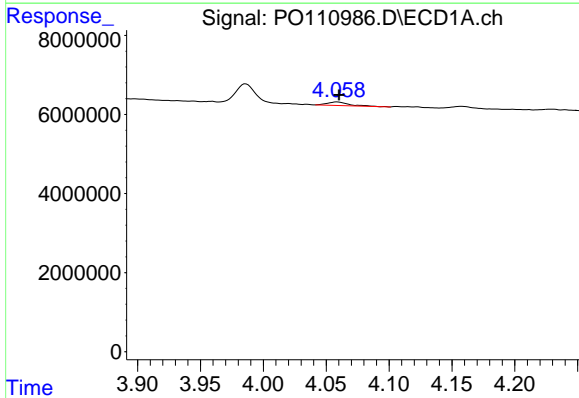
R.T.: 3.986 min  
 Delta R.T.: 0.002 min  
 Response: 5343917  
 Conc: 78.92 ng/ml

Instrument :  
 ECD\_O  
 ClientSampleId :  
 AR1254CCC500



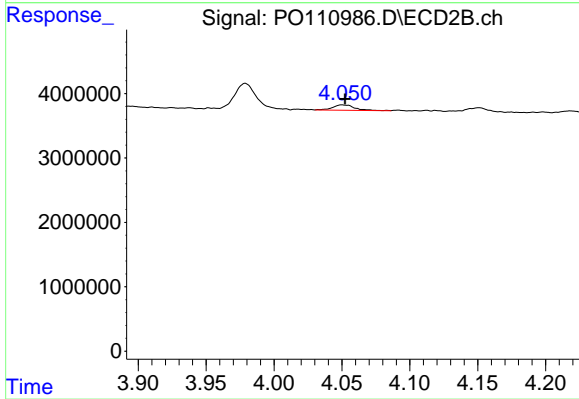
#9 AR-1221-2

R.T.: 3.979 min  
 Delta R.T.: 0.003 min  
 Response: 4494104  
 Conc: 87.55 ng/ml



#10 AR-1221-3

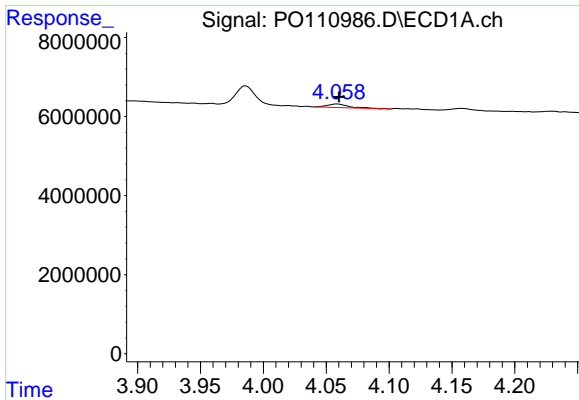
R.T.: 4.059 min  
 Delta R.T.: -0.002 min  
 Response: 1074541  
 Conc: 5.43 ng/ml



#10 AR-1221-3

R.T.: 4.050 min  
 Delta R.T.: -0.002 min  
 Response: 967437  
 Conc: 6.32 ng/ml

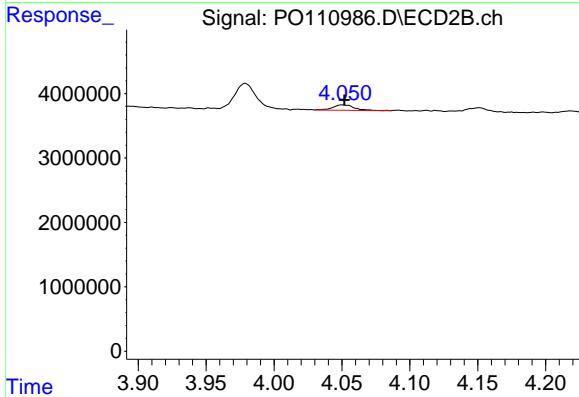




#11 AR-1232-1

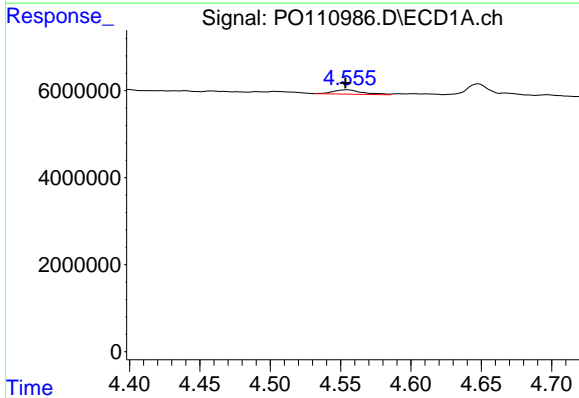
R.T.: 4.059 min  
 Delta R.T.: -0.002 min  
 Response: 1074541  
 Conc: 7.00 ng/ml

Instrument :  
 ECD\_O  
 ClientSampleId :  
 AR1254CCC500



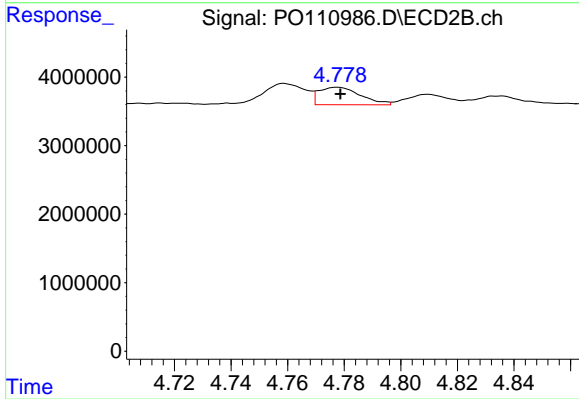
#11 AR-1232-1

R.T.: 4.050 min  
 Delta R.T.: -0.002 min  
 Response: 967437  
 Conc: 8.24 ng/ml



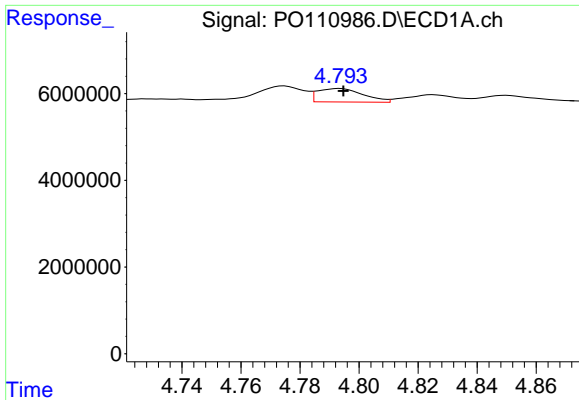
#12 AR-1232-2

R.T.: 4.555 min  
 Delta R.T.: 0.001 min  
 Response: 1452679  
 Conc: 17.63 ng/ml



#12 AR-1232-2

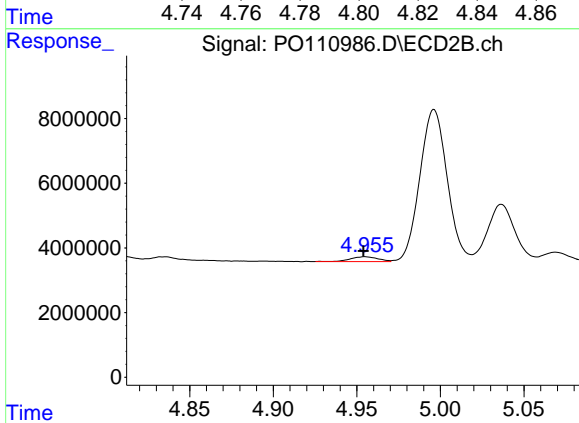
R.T.: 4.778 min  
 Delta R.T.: -0.001 min  
 Response: 2622054  
 Conc: 22.79 ng/ml



#13 AR-1232-3

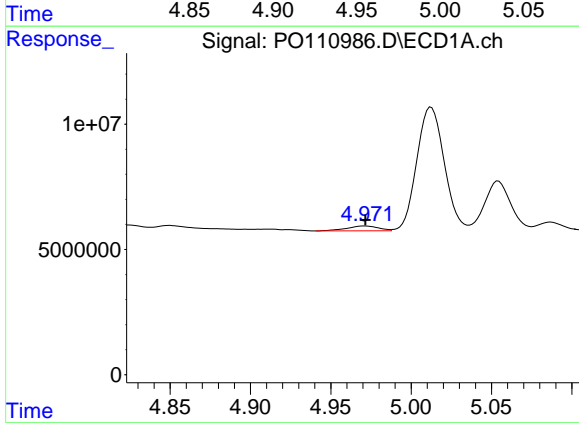
R.T.: 4.794 min  
 Delta R.T.: -0.001 min  
 Response: 3342889  
 Conc: 21.01 ng/ml

Instrument :  
 ECD\_O  
 ClientSampleId :  
 AR1254CCC500



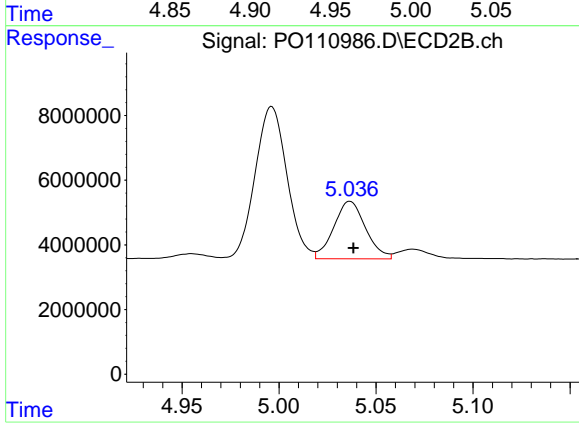
#13 AR-1232-3

R.T.: 4.955 min  
 Delta R.T.: 0.001 min  
 Response: 1737371  
 Conc: 28.82 ng/ml



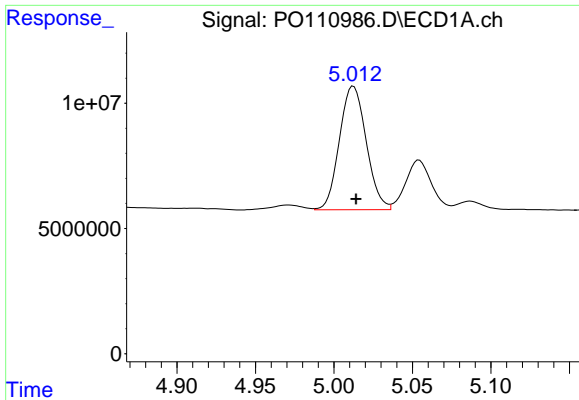
#14 AR-1232-4

R.T.: 4.972 min  
 Delta R.T.: 0.000 min  
 Response: 2716332  
 Conc: 32.27 ng/ml



#14 AR-1232-4

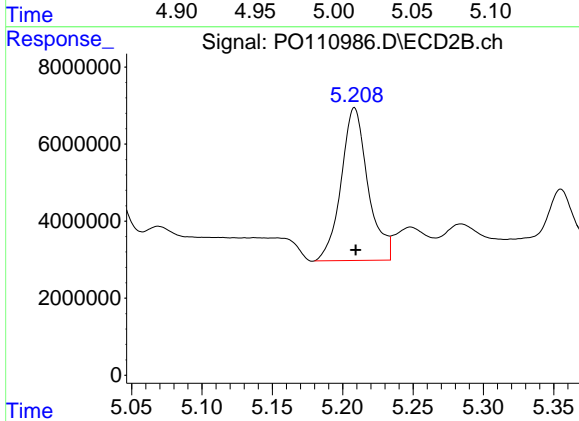
R.T.: 5.037 min  
 Delta R.T.: -0.002 min  
 Response: 20322368  
 Conc: 364.77 ng/ml



#15 AR-1232-5

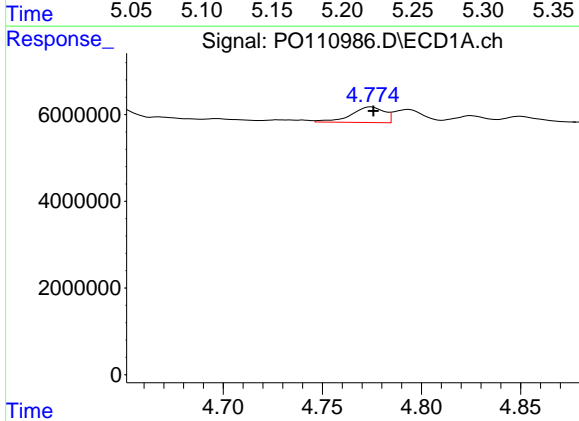
R.T.: 5.012 min  
 Delta R.T.: -0.002 min  
 Response: 58788226  
 Conc: 998.57 ng/ml

Instrument :  
 ECD\_O  
 ClientSampleId :  
 AR1254CCC500



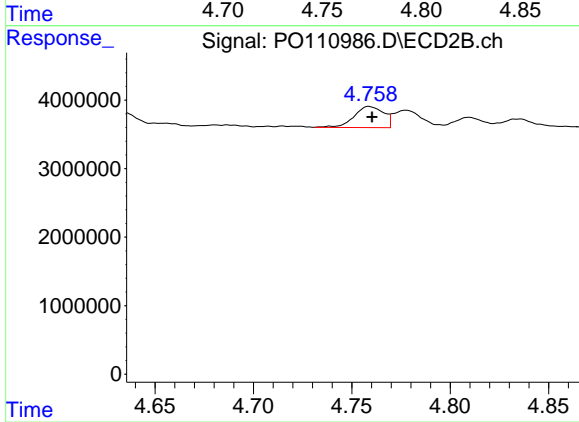
#15 AR-1232-5

R.T.: 5.208 min  
 Delta R.T.: 0.000 min  
 Response: 52696676  
 Conc: 895.22 ng/ml



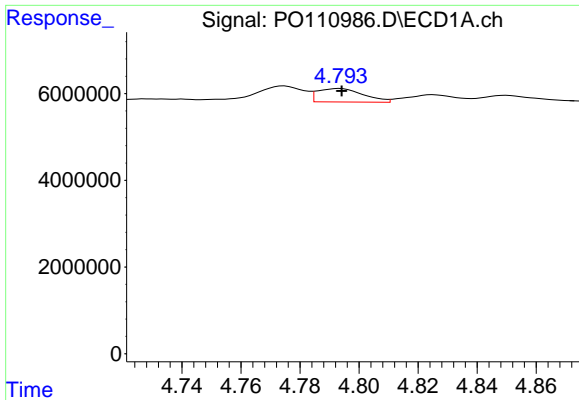
#16 AR-1242-1

R.T.: 4.775 min  
 Delta R.T.: -0.001 min  
 Response: 4198655  
 Conc: 22.83 ng/ml



#16 AR-1242-1

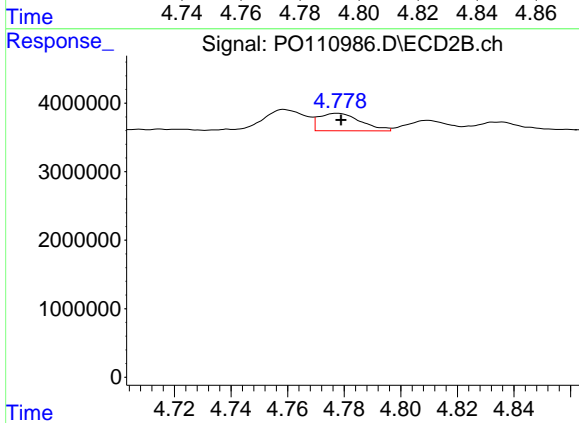
R.T.: 4.759 min  
 Delta R.T.: -0.001 min  
 Response: 3225119  
 Conc: 24.37 ng/ml



#17 AR-1242-2

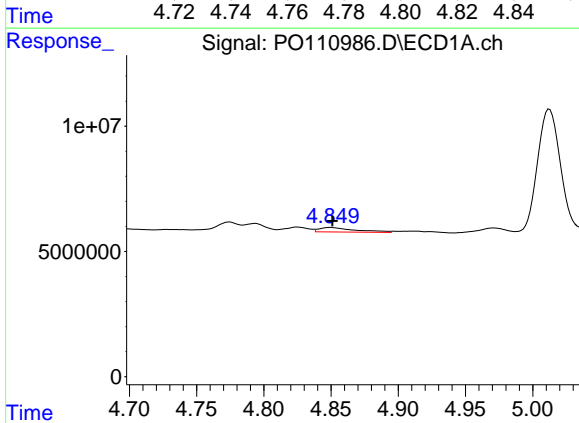
R.T.: 4.794 min  
 Delta R.T.: 0.000 min  
 Response: 3342889  
 Conc: 12.98 ng/ml

Instrument :  
 ECD\_O  
 ClientSampleId :  
 AR1254CCC500



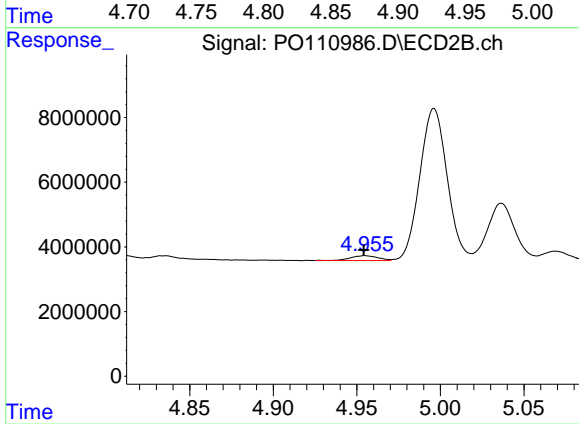
#17 AR-1242-2

R.T.: 4.778 min  
 Delta R.T.: -0.001 min  
 Response: 2622054  
 Conc: 13.79 ng/ml



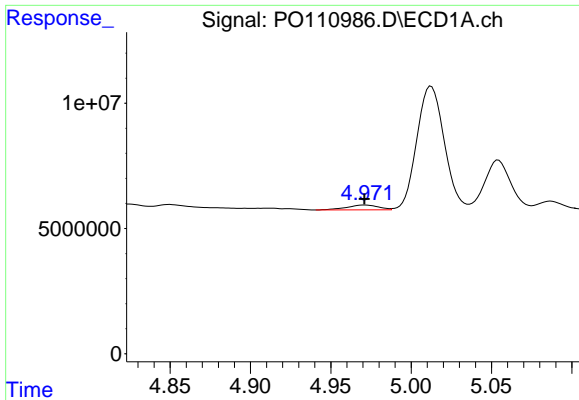
#18 AR-1242-3

R.T.: 4.850 min  
 Delta R.T.: -0.001 min  
 Response: 3303799  
 Conc: 18.14 ng/ml



#18 AR-1242-3

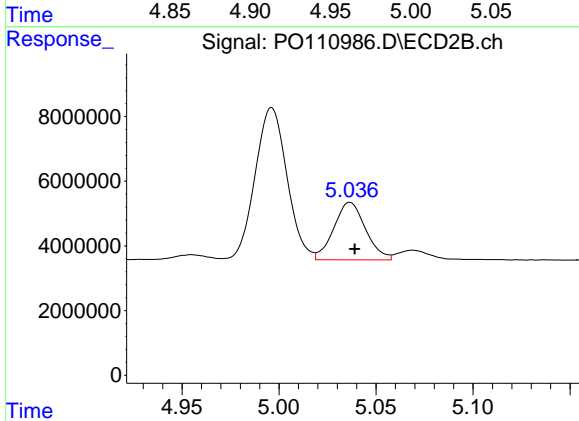
R.T.: 4.955 min  
 Delta R.T.: 0.000 min  
 Response: 1737371  
 Conc: 17.15 ng/ml



#19 AR-1242-4

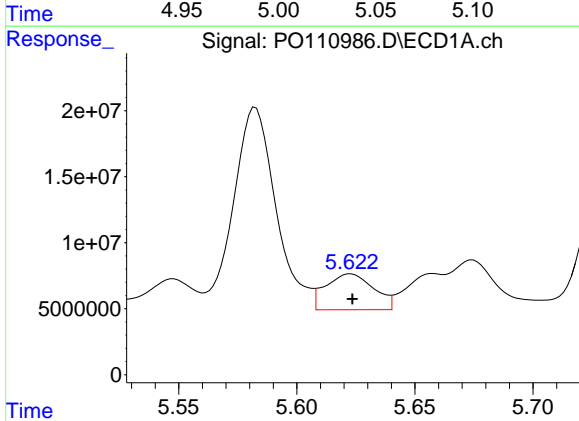
R.T.: 4.972 min  
 Delta R.T.: 0.000 min  
 Response: 2716332  
 Conc: 19.45 ng/ml

Instrument :  
 ECD\_O  
 ClientSampleId :  
 AR1254CCC500



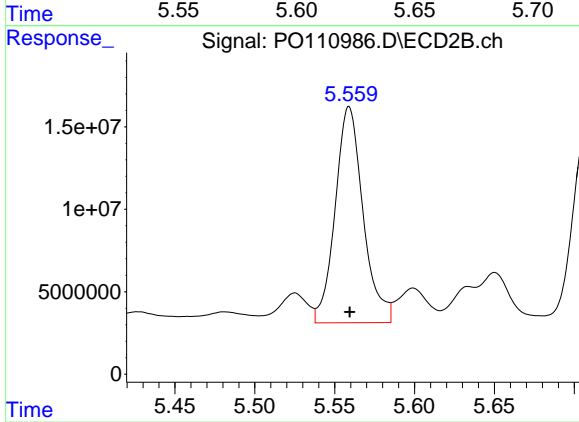
#19 AR-1242-4

R.T.: 5.037 min  
 Delta R.T.: -0.002 min  
 Response: 20322368  
 Conc: 195.95 ng/ml



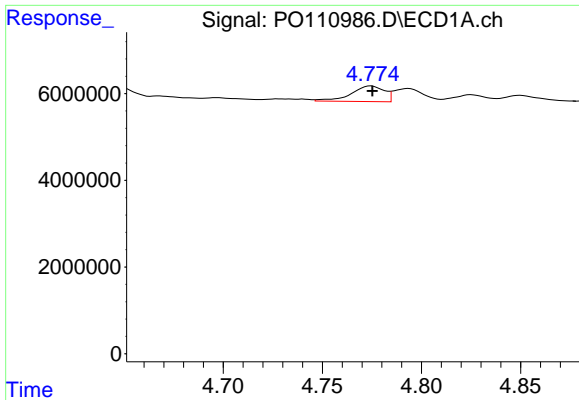
#20 AR-1242-5

R.T.: 5.623 min  
 Delta R.T.: 0.000 min  
 Response: 38439153  
 Conc: 246.57 ng/ml



#20 AR-1242-5

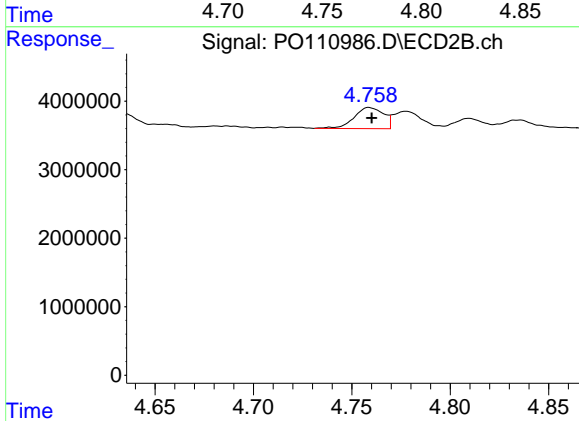
R.T.: 5.559 min  
 Delta R.T.: 0.000 min  
 Response: 159677984  
 Conc: 1261.62 ng/ml



#21 AR-1248-1

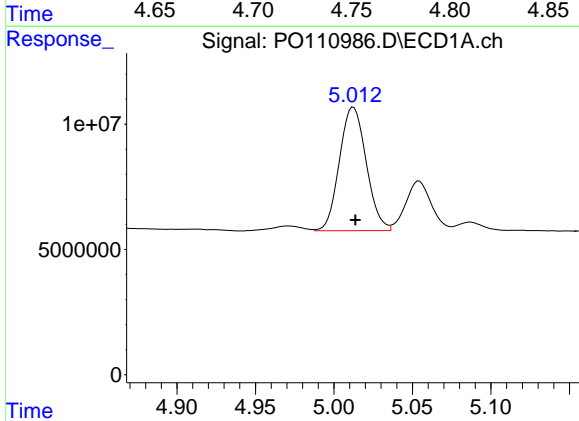
R.T.: 4.775 min  
 Delta R.T.: 0.000 min  
 Response: 4198655  
 Conc: 31.96 ng/ml

Instrument :  
 ECD\_O  
 ClientSampleId :  
 AR1254CCC500



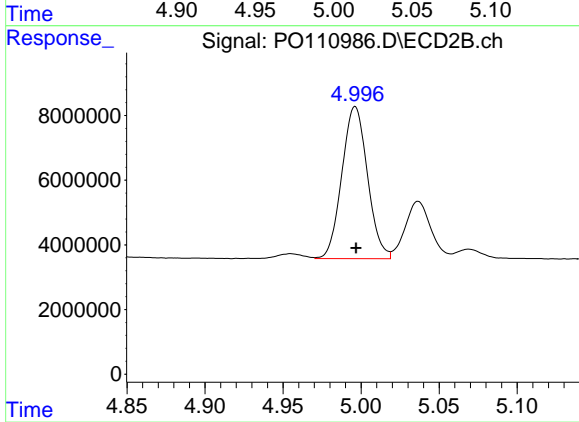
#21 AR-1248-1

R.T.: 4.759 min  
 Delta R.T.: -0.001 min  
 Response: 3225119  
 Conc: 33.46 ng/ml



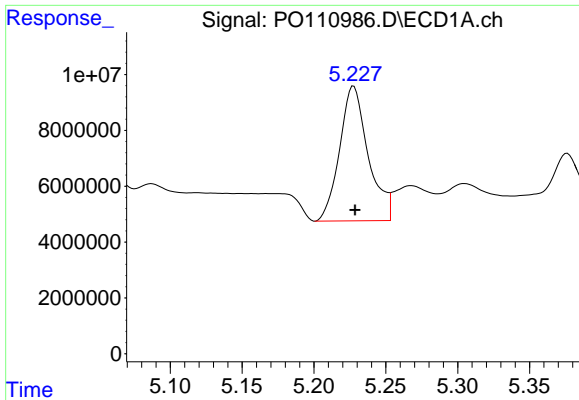
#22 AR-1248-2

R.T.: 5.012 min  
 Delta R.T.: -0.001 min  
 Response: 58788226  
 Conc: 335.49 ng/ml



#22 AR-1248-2

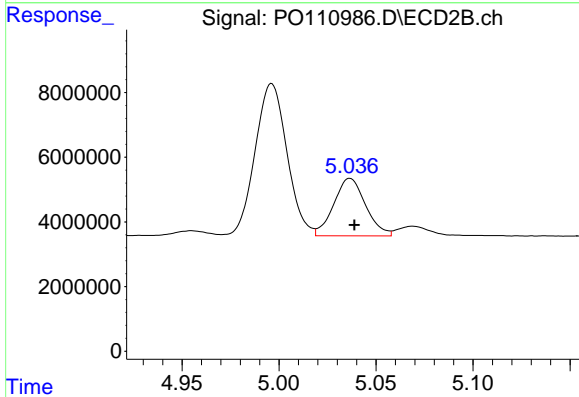
R.T.: 4.996 min  
 Delta R.T.: 0.000 min  
 Response: 53805057  
 Conc: 398.20 ng/ml



#23 AR-1248-3

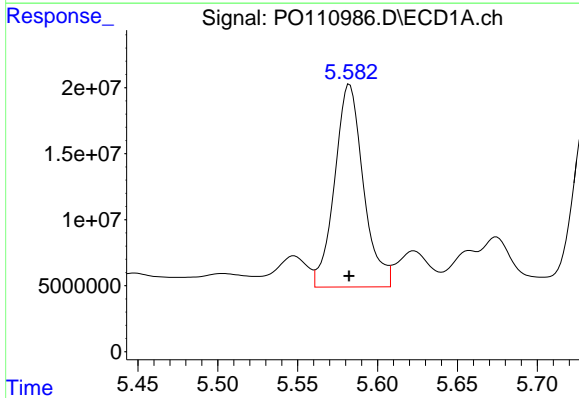
R.T.: 5.228 min  
 Delta R.T.: 0.000 min  
 Response: 66663202  
 Conc: 302.37 ng/ml

Instrument :  
 ECD\_O  
 ClientSampleId :  
 AR1254CCC500



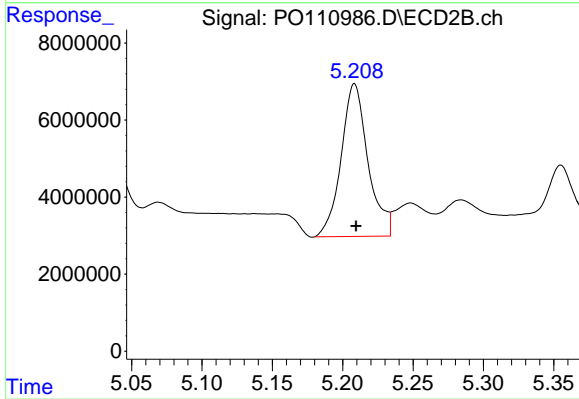
#23 AR-1248-3

R.T.: 5.037 min  
 Delta R.T.: -0.002 min  
 Response: 20322368  
 Conc: 140.02 ng/ml



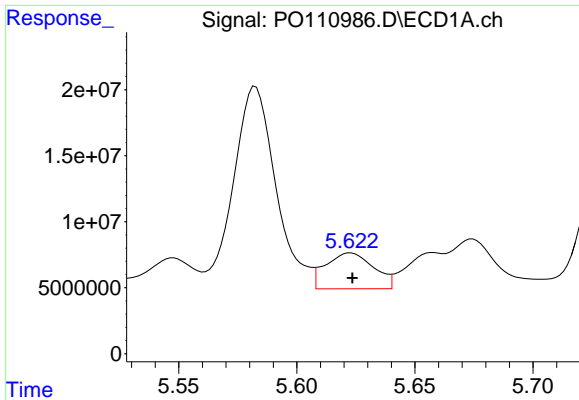
#24 AR-1248-4

R.T.: 5.583 min  
 Delta R.T.: 0.000 min  
 Response: 192106583  
 Conc: 586.20 ng/ml



#24 AR-1248-4

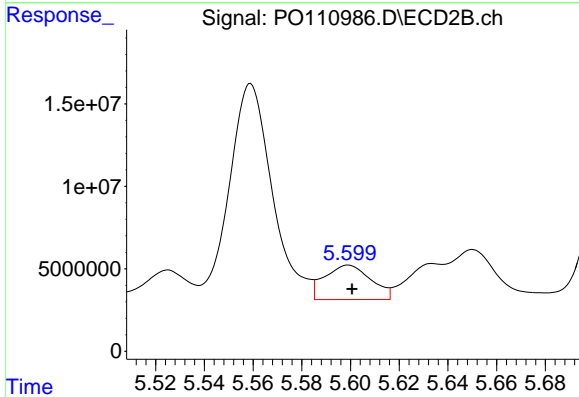
R.T.: 5.208 min  
 Delta R.T.: -0.001 min  
 Response: 52696676  
 Conc: 314.58 ng/ml



#25 AR-1248-5

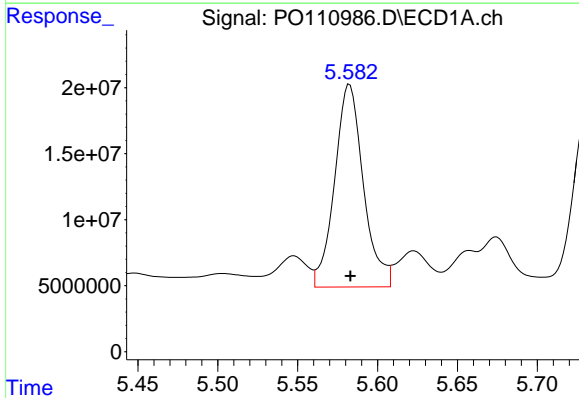
R.T.: 5.623 min  
 Delta R.T.: 0.000 min  
 Response: 38439153  
 Conc: 164.66 ng/ml

Instrument :  
 ECD\_O  
 ClientSampleId :  
 AR1254CCC500



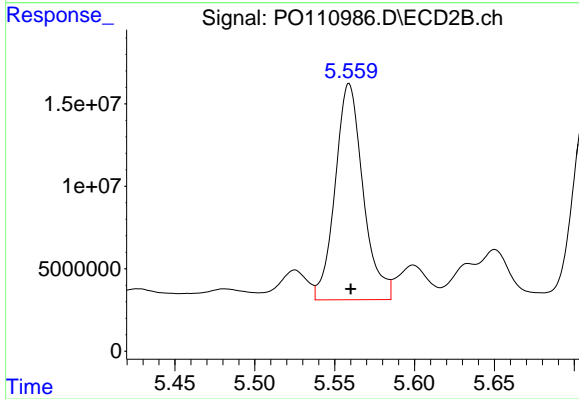
#25 AR-1248-5

R.T.: 5.599 min  
 Delta R.T.: -0.002 min  
 Response: 27648485  
 Conc: 164.69 ng/ml



#26 AR-1254-1

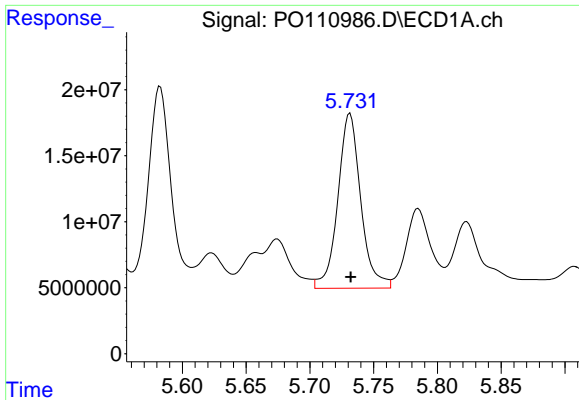
R.T.: 5.583 min  
 Delta R.T.: 0.000 min  
 Response: 192106583  
 Conc: 569.09 ng/ml



#26 AR-1254-1

R.T.: 5.559 min  
 Delta R.T.: 0.000 min  
 Response: 159677984  
 Conc: 636.11 ng/ml

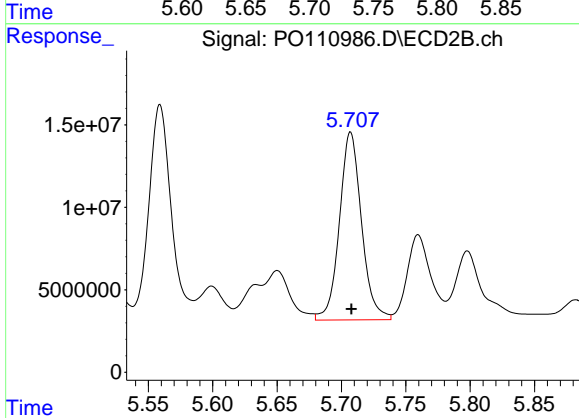




#27 AR-1254-2

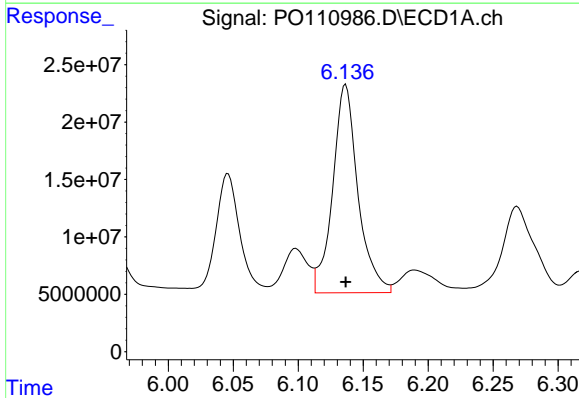
R.T.: 5.731 min  
 Delta R.T.: 0.000 min  
 Response: 165636036  
 Conc: 575.72 ng/ml

Instrument :  
 ECD\_O  
 ClientSampleId :  
 AR1254CCC500



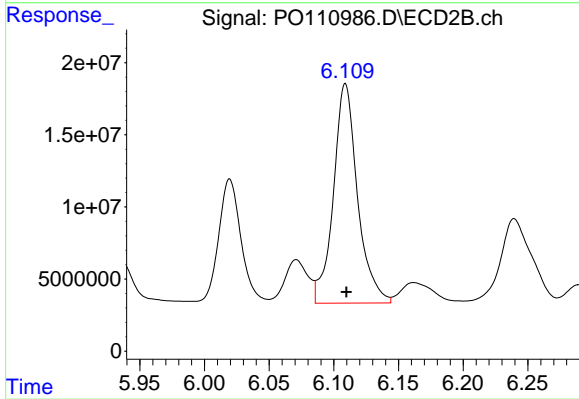
#27 AR-1254-2

R.T.: 5.707 min  
 Delta R.T.: 0.000 min  
 Response: 136180985  
 Conc: 624.15 ng/ml



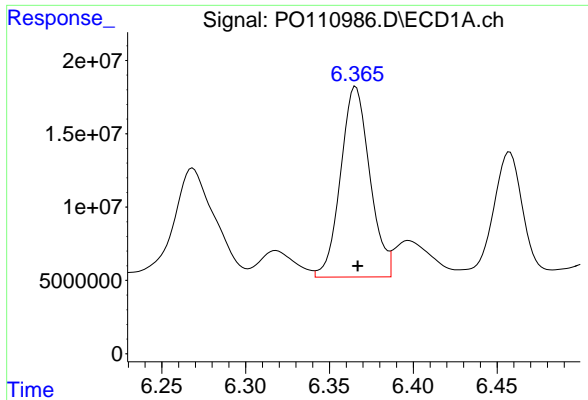
#28 AR-1254-3

R.T.: 6.137 min  
 Delta R.T.: 0.000 min  
 Response: 245308233  
 Conc: 536.43 ng/ml



#28 AR-1254-3

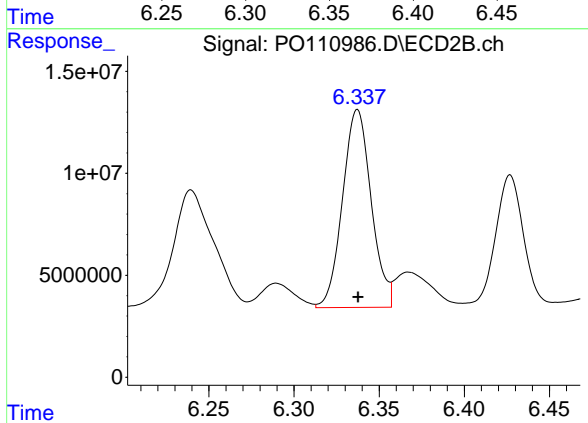
R.T.: 6.109 min  
 Delta R.T.: 0.000 min  
 Response: 197548355  
 Conc: 591.09 ng/ml



#29 AR-1254-4

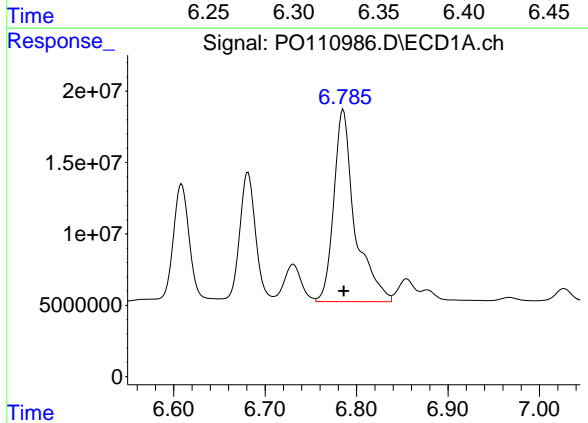
R.T.: 6.366 min  
 Delta R.T.: -0.001 min  
 Response: 157590382  
 Conc: 516.99 ng/ml

Instrument :  
 ECD\_O  
 ClientSampleId :  
 AR1254CCC500



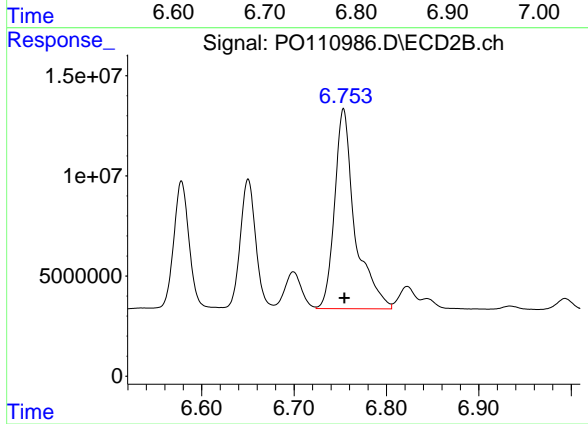
#29 AR-1254-4

R.T.: 6.337 min  
 Delta R.T.: 0.000 min  
 Response: 113803237  
 Conc: 586.13 ng/ml



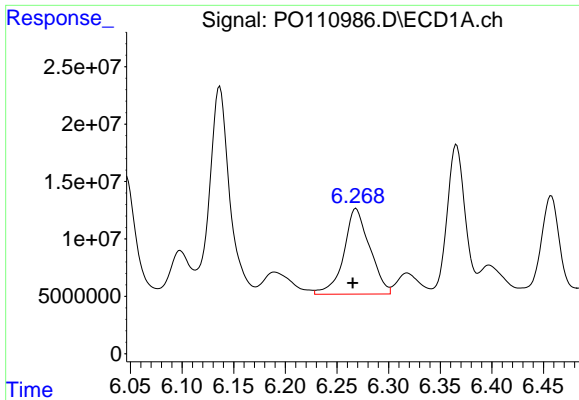
#30 AR-1254-5

R.T.: 6.785 min  
 Delta R.T.: 0.000 min  
 Response: 215888674  
 Conc: 511.72 ng/ml



#30 AR-1254-5

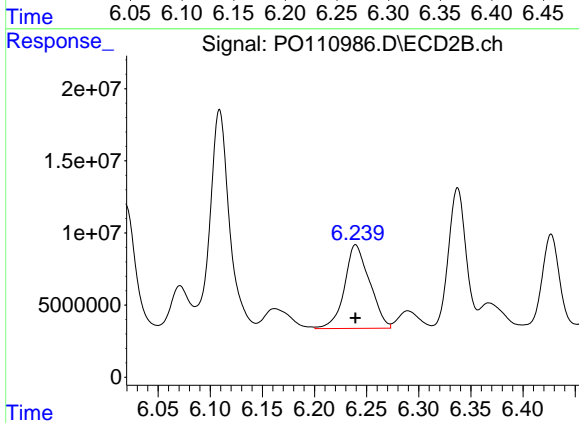
R.T.: 6.754 min  
 Delta R.T.: 0.000 min  
 Response: 153091756  
 Conc: 570.64 ng/ml



#31 AR-1260-1

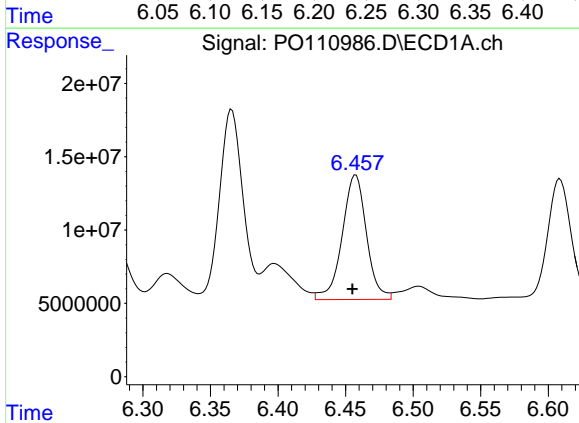
R.T.: 6.268 min  
 Delta R.T.: 0.003 min  
 Response: 130340316  
 Conc: 391.86 ng/ml

Instrument :  
 ECD\_O  
 ClientSampleId :  
 AR1254CCC500



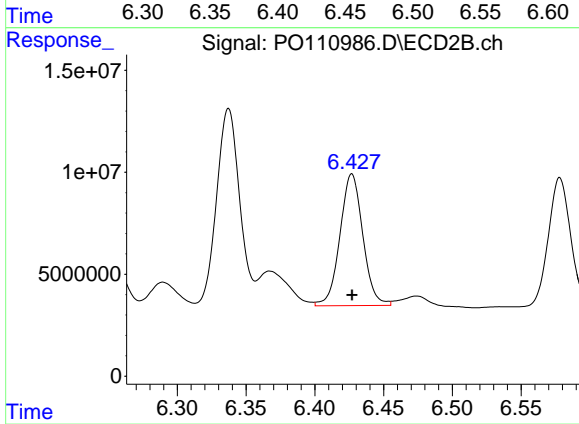
#31 AR-1260-1

R.T.: 6.239 min  
 Delta R.T.: 0.000 min  
 Response: 97118106  
 Conc: 439.91 ng/ml



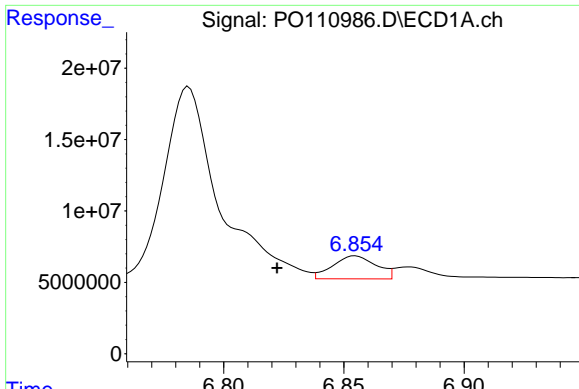
#32 AR-1260-2

R.T.: 6.457 min  
 Delta R.T.: 0.003 min  
 Response: 106321539  
 Conc: 256.31 ng/ml



#32 AR-1260-2

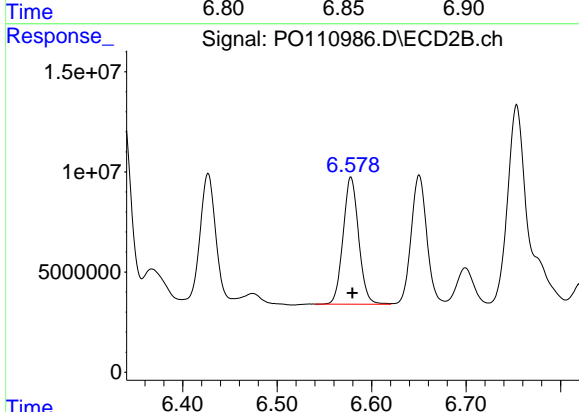
R.T.: 6.427 min  
 Delta R.T.: 0.000 min  
 Response: 74865781  
 Conc: 291.05 ng/ml



#33 AR-1260-3

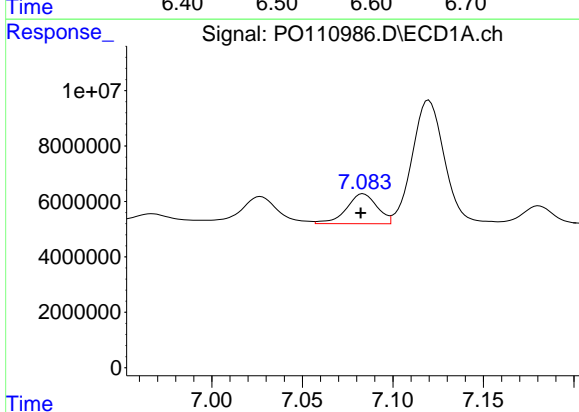
R.T.: 6.855 min  
 Delta R.T.: 0.033 min  
 Response: 20258651  
 Conc: 57.51 ng/ml

Instrument :  
 ECD\_O  
 ClientSampleId :  
 AR1254CCC500



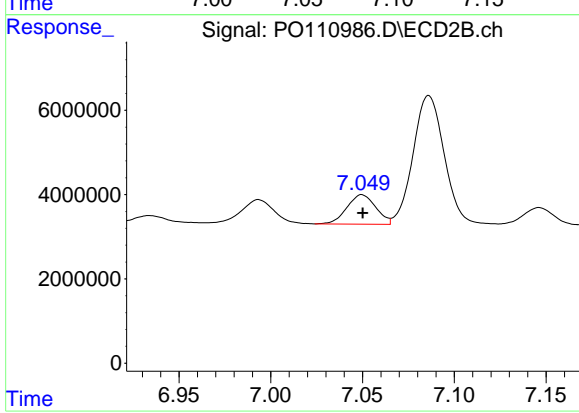
#33 AR-1260-3

R.T.: 6.578 min  
 Delta R.T.: -0.002 min  
 Response: 72627627  
 Conc: 311.51 ng/ml



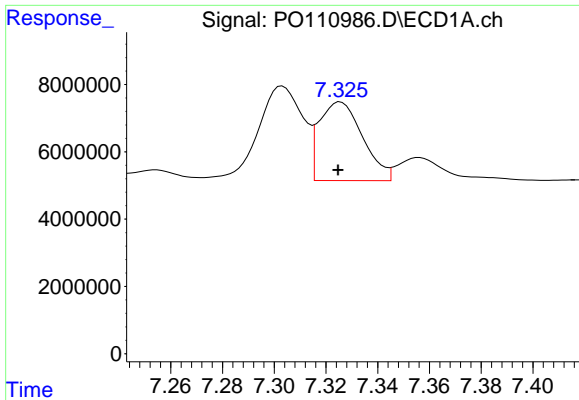
#34 AR-1260-4

R.T.: 7.084 min  
 Delta R.T.: 0.001 min  
 Response: 12768713  
 Conc: 41.97 ng/ml



#34 AR-1260-4

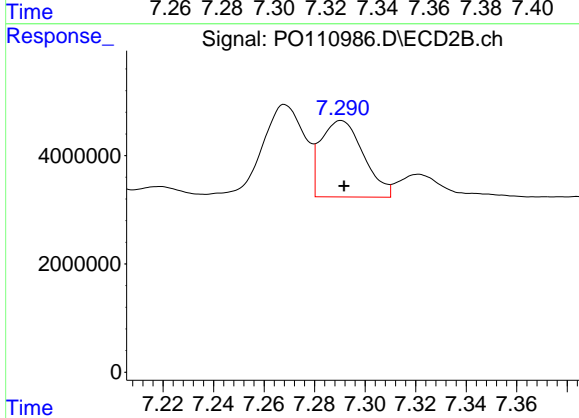
R.T.: 7.050 min  
 Delta R.T.: 0.000 min  
 Response: 7648527  
 Conc: 42.00 ng/ml



#35 AR-1260-5

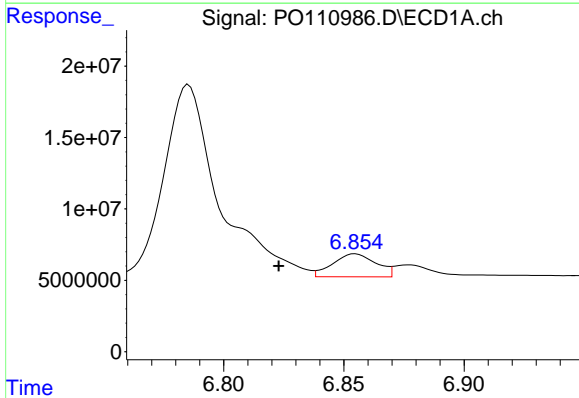
R.T.: 7.326 min  
 Delta R.T.: 0.000 min  
 Response: 27311934  
 Conc: 37.19 ng/ml

Instrument :  
 ECD\_O  
 ClientSampleId :  
 AR1254CCC500



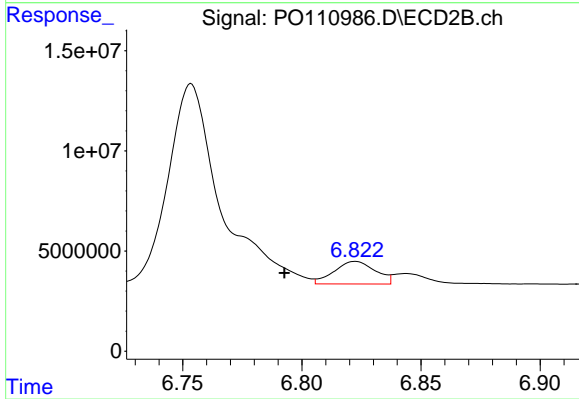
#35 AR-1260-5

R.T.: 7.291 min  
 Delta R.T.: -0.001 min  
 Response: 16589611  
 Conc: 42.19 ng/ml



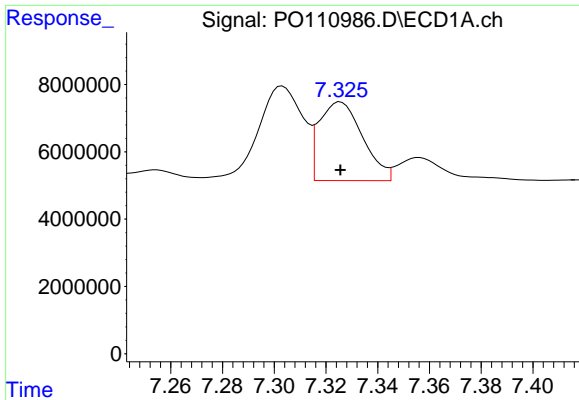
#36 AR-1262-1

R.T.: 6.855 min  
 Delta R.T.: 0.032 min  
 Response: 20258651  
 Conc: 44.00 ng/ml



#36 AR-1262-1

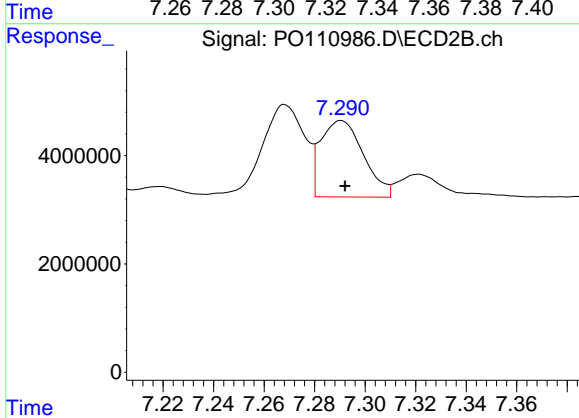
R.T.: 6.822 min  
 Delta R.T.: 0.030 min  
 Response: 13545128  
 Conc: 47.96 ng/ml



#37 AR-1262-2

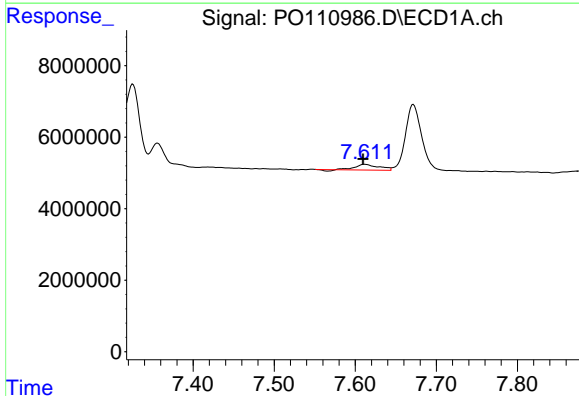
R.T.: 7.326 min  
 Delta R.T.: 0.000 min  
 Response: 27311934  
 Conc: 34.73 ng/ml

Instrument :  
 ECD\_O  
 ClientSampleId :  
 AR1254CCC500



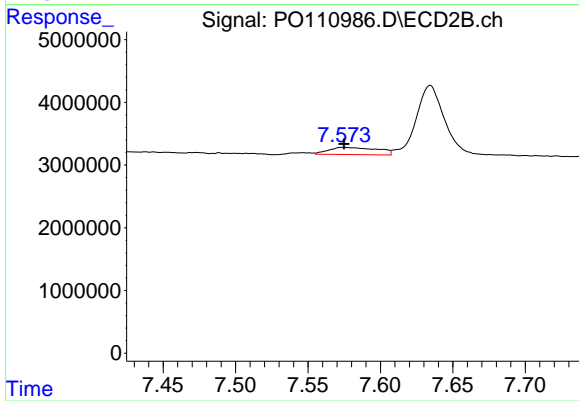
#37 AR-1262-2

R.T.: 7.291 min  
 Delta R.T.: -0.002 min  
 Response: 16589611  
 Conc: 37.76 ng/ml



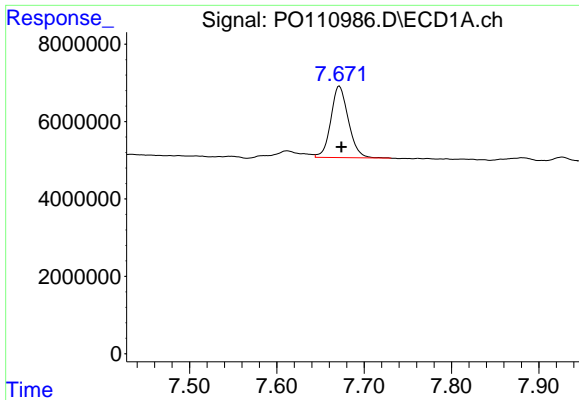
#38 AR-1262-3

R.T.: 7.612 min  
 Delta R.T.: 0.002 min  
 Response: 3009778  
 Conc: 9.01 ng/ml



#38 AR-1262-3

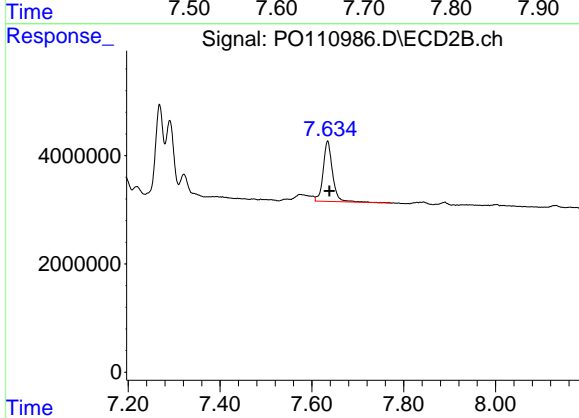
R.T.: 7.574 min  
 Delta R.T.: 0.000 min  
 Response: 2684840  
 Conc: 16.54 ng/ml



#39 AR-1262-4

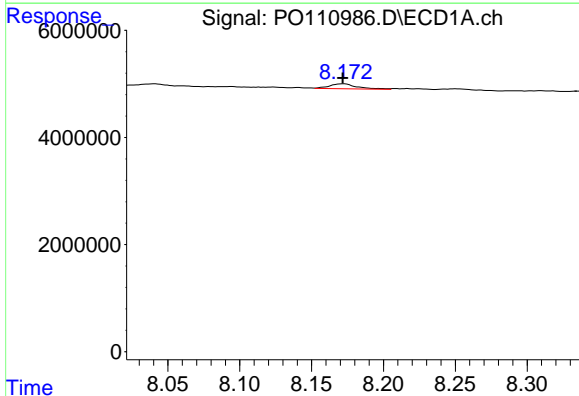
R.T.: 7.672 min  
 Delta R.T.: -0.002 min  
 Response: 25763459  
 Conc: 44.53 ng/ml

Instrument :  
 ECD\_O  
 ClientSampleId :  
 AR1254CCC500



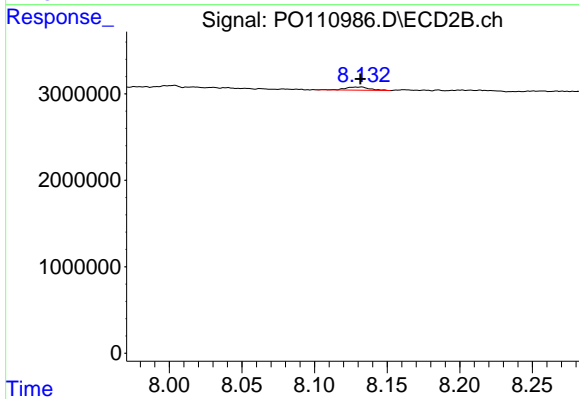
#39 AR-1262-4

R.T.: 7.634 min  
 Delta R.T.: -0.004 min  
 Response: 15745369  
 Conc: 54.08 ng/ml



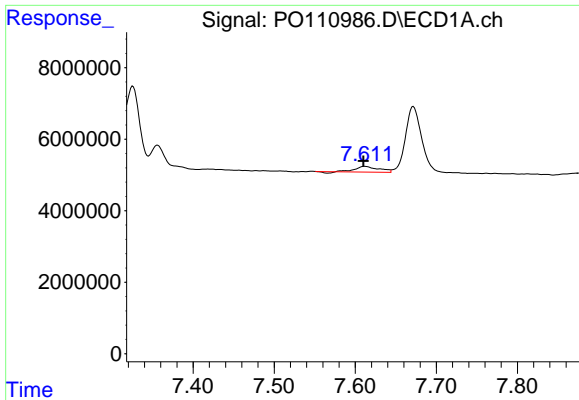
#40 AR-1262-5

R.T.: 8.172 min  
 Delta R.T.: 0.000 min  
 Response: 1232607  
 Conc: 4.62 ng/ml



#40 AR-1262-5

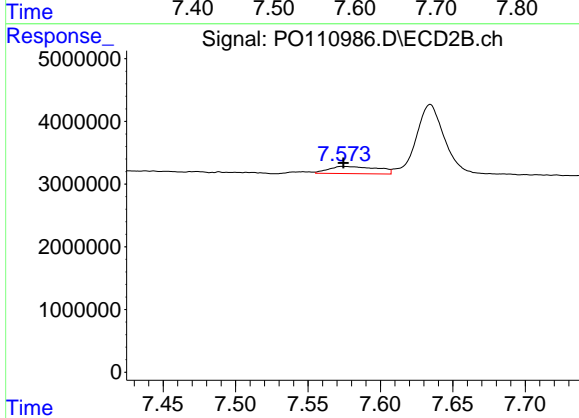
R.T.: 8.132 min  
 Delta R.T.: 0.000 min  
 Response: 412573  
 Conc: 4.18 ng/ml



#41 AR-1268-1

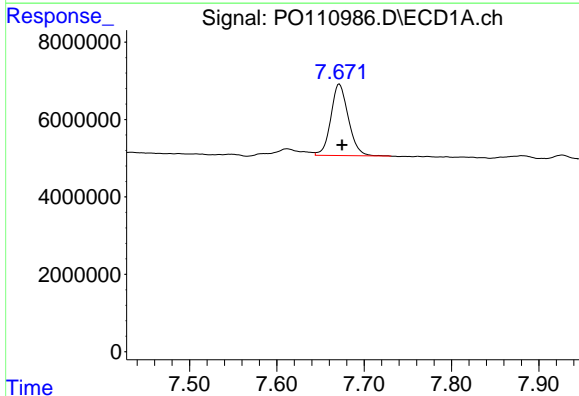
R.T.: 7.612 min  
 Delta R.T.: 0.002 min  
 Response: 3009778  
 Conc: 3.38 ng/ml

Instrument :  
 ECD\_O  
 ClientSampleId :  
 AR1254CCC500



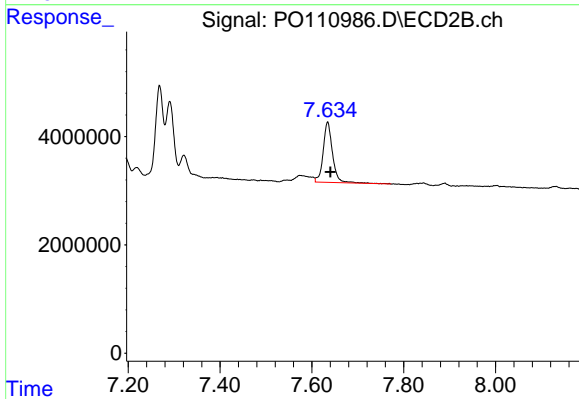
#41 AR-1268-1

R.T.: 7.574 min  
 Delta R.T.: 0.000 min  
 Response: 2684840  
 Conc: 6.23 ng/ml



#42 AR-1268-2

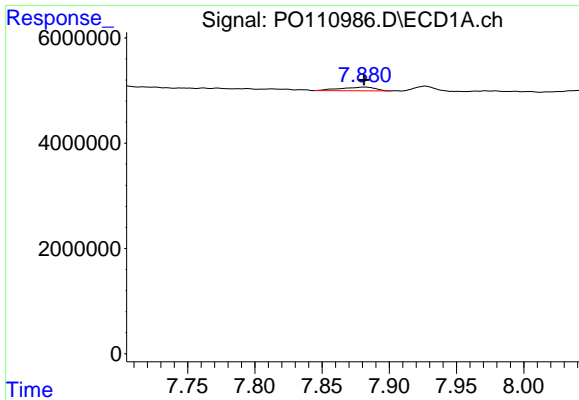
R.T.: 7.672 min  
 Delta R.T.: -0.003 min  
 Response: 25763459  
 Conc: 32.11 ng/ml



#42 AR-1268-2

R.T.: 7.634 min  
 Delta R.T.: -0.006 min  
 Response: 15745369  
 Conc: 41.02 ng/ml

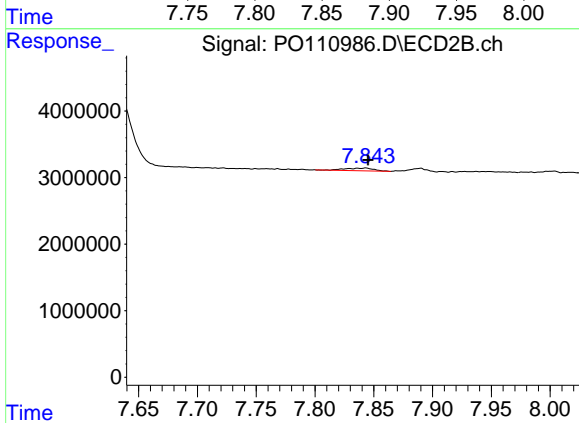




#43 AR-1268-3

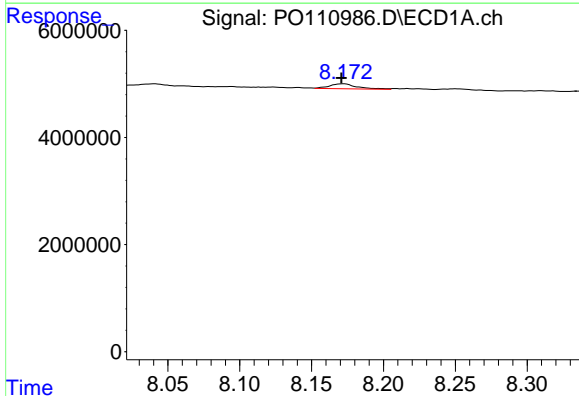
R.T.: 7.881 min  
 Delta R.T.: 0.000 min  
 Response: 1243827  
 Conc: 1.81 ng/ml

Instrument :  
 ECD\_O  
 ClientSampleId :  
 AR1254CCC500



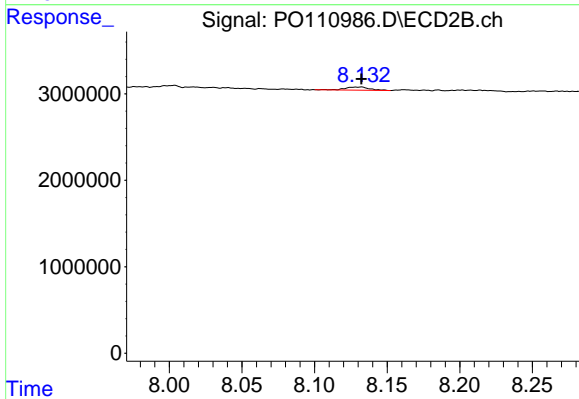
#43 AR-1268-3

R.T.: 7.843 min  
 Delta R.T.: -0.002 min  
 Response: 661505  
 Conc: 2.33 ng/ml



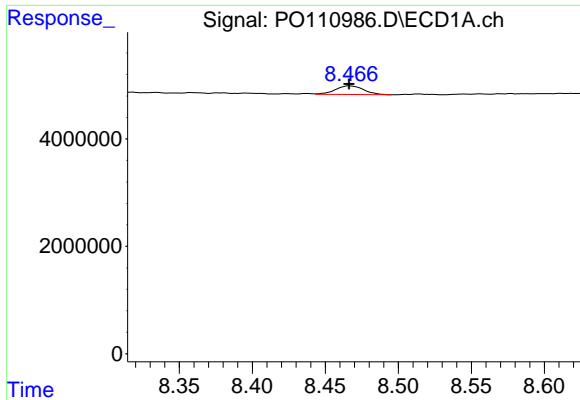
#44 AR-1268-4

R.T.: 8.172 min  
 Delta R.T.: 0.002 min  
 Response: 1232607  
 Conc: 4.43 ng/ml



#44 AR-1268-4

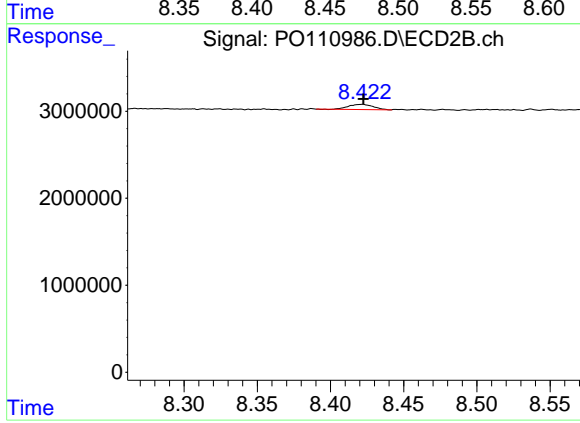
R.T.: 8.132 min  
 Delta R.T.: 0.000 min  
 Response: 412573  
 Conc: 3.96 ng/ml



#45 AR-1268-5

R.T.: 8.467 min  
Delta R.T.: 0.000 min  
Response: 2161976  
Conc: 1.06 ng/ml

Instrument :  
ECD\_O  
ClientSampleId :  
AR1254CCC500



#45 AR-1268-5

R.T.: 8.422 min  
Delta R.T.: -0.001 min  
Response: 673448  
Conc: 1.11 ng/ml