

Data Path : Z:\pestpcbsrv\HPCHEM1\ECD\_O\Data\P0050825\  
 Data File : P0110948.D  
 Signal(s) : Signal #1: ECD1A.ch Signal #2: ECD2B.ch  
 Acq On : 08 May 2025 10:17  
 Operator : YP/AJ  
 Sample : AR1242CCC500  
 Misc :  
 ALS Vial : 4 Sample Multiplier: 1

**Instrument :**  
 ECD\_O  
**ClientSampleId :**  
 AR1242CCC500

Integration File signal 1: autoint1.e  
 Integration File signal 2: autoint2.e  
 Quant Time: May 08 13:09:36 2025  
 Quant Method : Z:\pestpcbsrv\HPCHEM1\ECD\_O\methods\P0050225.M  
 Quant Title : GC EXTRACTABLES  
 QLast Update : Fri May 02 23:47:49 2025  
 Response via : Initial Calibration  
 Integrator: ChemStation

Volume Inj. : 2 µl  
 Signal #1 Phase : ZB-MR1 Signal #2 Phase: ZB-MR2  
 Signal #1 Info : 30Mx0.32mmx 0.50µ Signal #2 Info : 30M x 0.32mm x 0.25µm

Compound	RT#1	RT#2	Resp#1	Resp#2	ng/ml	ng/ml
-----						
System Monitoring Compounds						
1) SA Tetrachlo...	3.687	3.680	284.6E6	273.5E6	49.751	56.472
2) SA Decachlor...	8.732	8.676	253.4E6	90161439	41.529	53.437 #
Target Compounds						
16) L4 AR-1242-1	4.778	4.760	84244455	70797416	458.030	535.020
17) L4 AR-1242-2	4.797	4.778	120.5E6	102.7E6	467.871	540.557
18) L4 AR-1242-3	4.854	4.954	85491537	54832775	469.451	541.179
19) L4 AR-1242-4	4.974	5.038	66276780	55388382	474.582	534.068
20) L4 AR-1242-5	5.627	5.559	70080251	66948007	449.536	528.958
-----						

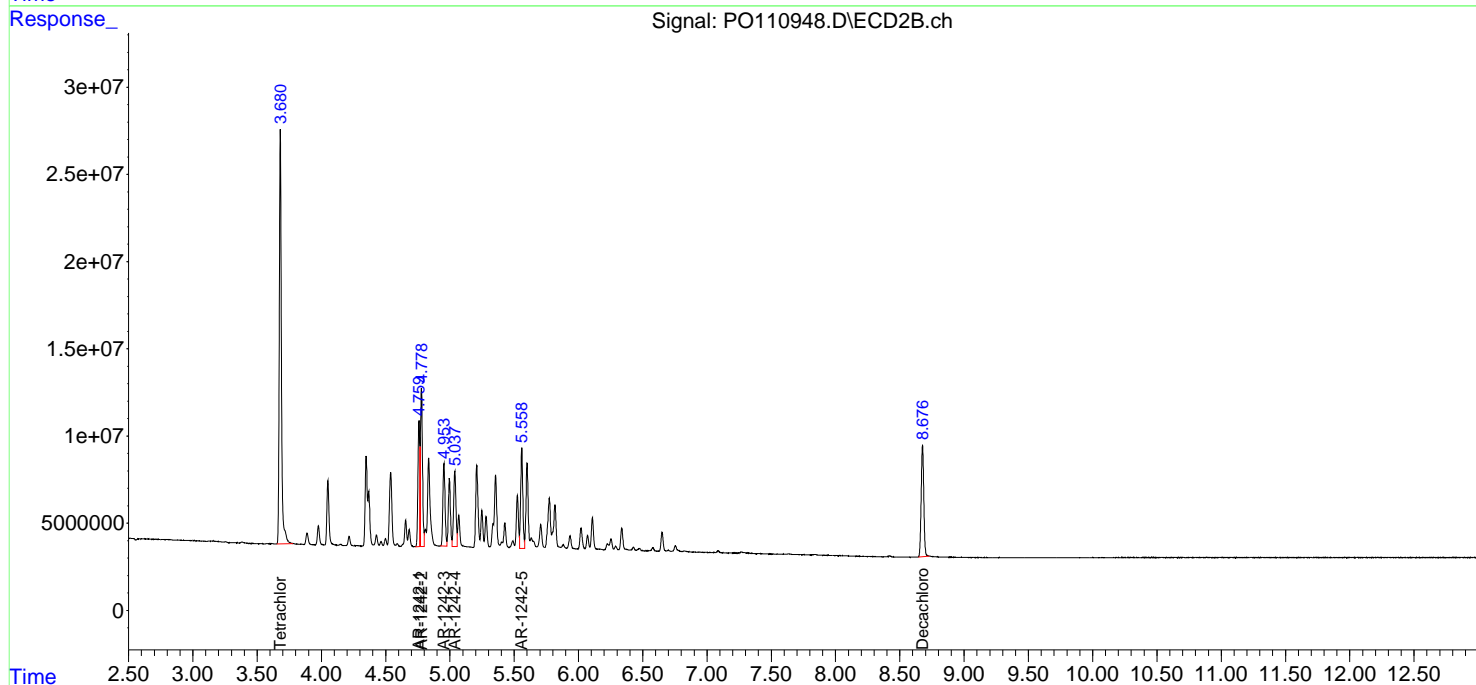
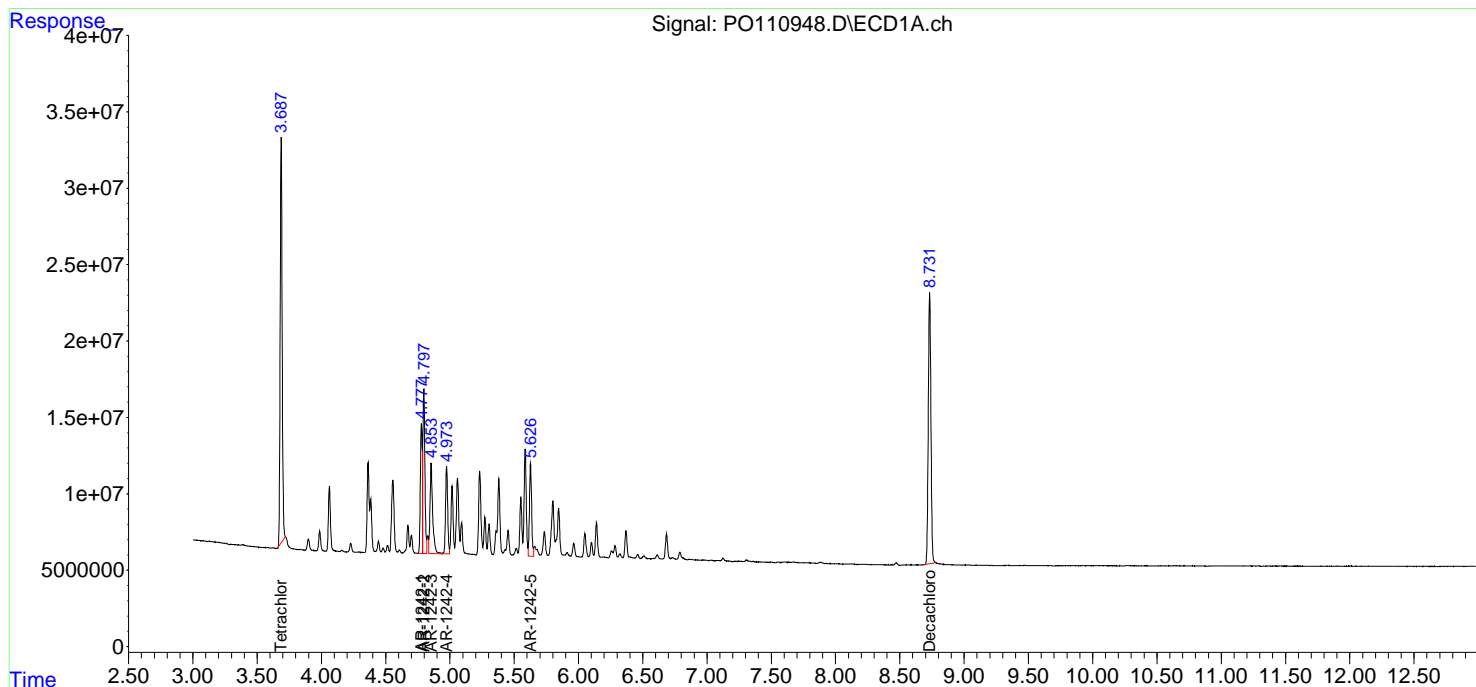
(f)=RT Delta > 1/2 Window (#)=Amounts differ by > 25% (m)=manual int.

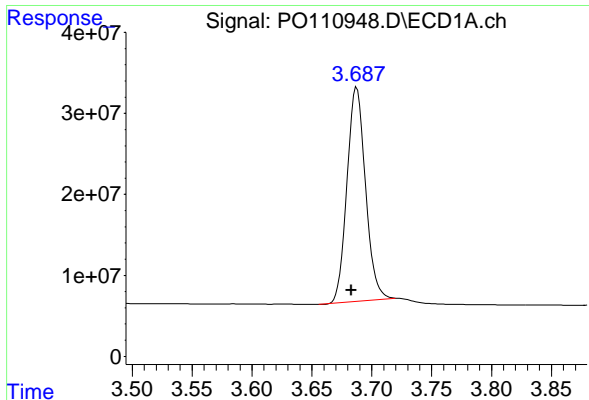
Data Path : Z:\pestpcbsrv\HPCHEM1\ECD\_O\Data\PO050825\  
 Data File : PO110948.D  
 Signal(s) : Signal #1: ECD1A.ch Signal #2: ECD2B.ch  
 Acq On : 08 May 2025 10:17  
 Operator : YP/AJ  
 Sample : AR1242CCC500  
 Misc :  
 ALS Vial : 4 Sample Multiplier: 1

Instrument :  
 ECD\_O  
 ClientSampleId :  
 AR1242CCC500

Integration File signal 1: autoint1.e  
 Integration File signal 2: autoint2.e  
 Quant Time: May 08 13:09:36 2025  
 Quant Method : Z:\pestpcbsrv\HPCHEM1\ECD\_O\methods\PO050225.M  
 Quant Title : GC EXTRACTABLES  
 QLast Update : Fri May 02 23:47:49 2025  
 Response via : Initial Calibration  
 Integrator: ChemStation

Volume Inj. : 2 µl  
 Signal #1 Phase : ZB-MR1 Signal #2 Phase: ZB-MR2  
 Signal #1 Info : 30Mx0.32mmx 0.50µ Signal #2 Info : 30M x 0.32mm x 0.25µm

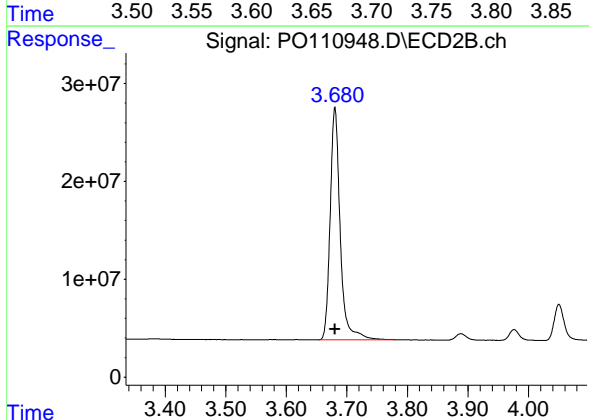




#1 Tetrachloro-m-xylene

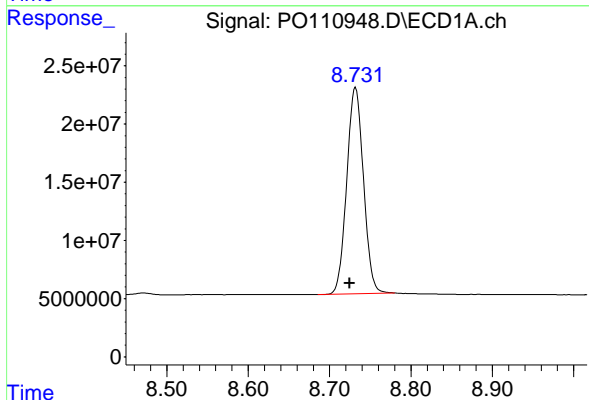
R.T.: 3.687 min  
 Delta R.T.: 0.004 min  
 Response: 284613732  
 Conc: 49.75 ng/ml

Instrument :  
 ECD\_O  
 ClientSampleId :  
 AR1242CCC500



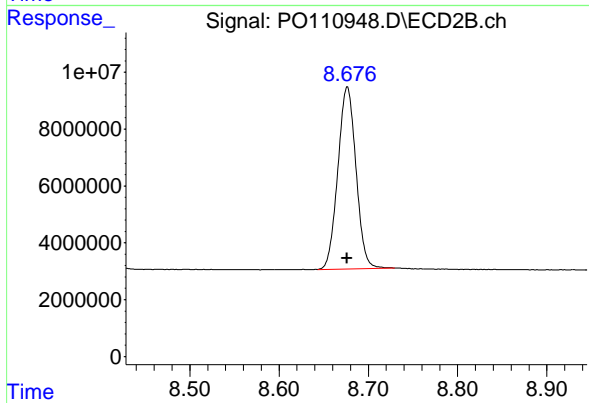
#1 Tetrachloro-m-xylene

R.T.: 3.680 min  
 Delta R.T.: 0.000 min  
 Response: 273497425  
 Conc: 56.47 ng/ml



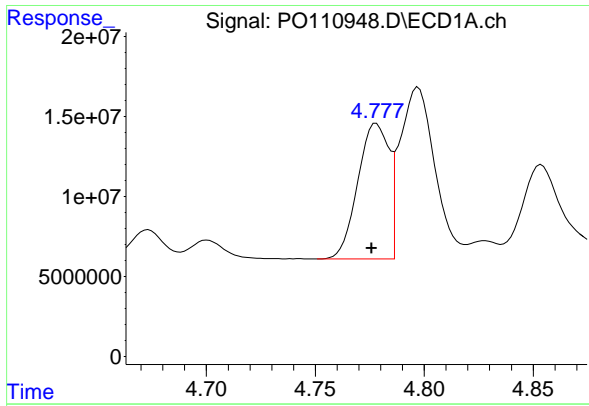
#2 Decachlorobiphenyl

R.T.: 8.732 min  
 Delta R.T.: 0.007 min  
 Response: 253427555  
 Conc: 41.53 ng/ml



#2 Decachlorobiphenyl

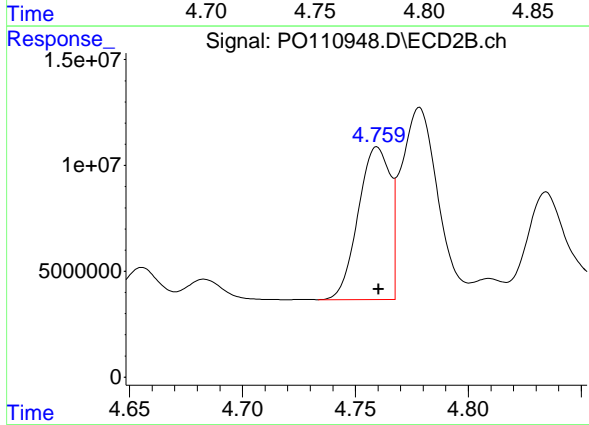
R.T.: 8.676 min  
 Delta R.T.: 0.000 min  
 Response: 90161439  
 Conc: 53.44 ng/ml



#16 AR-1242-1

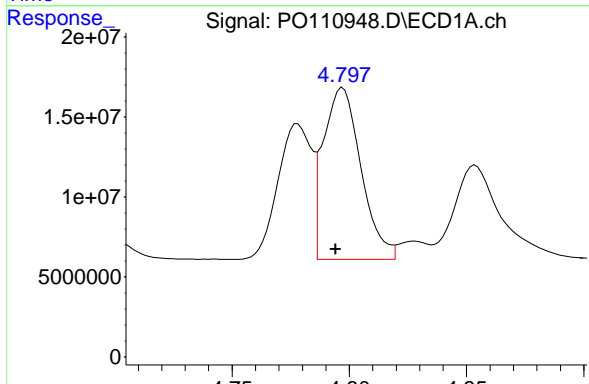
R.T.: 4.778 min  
 Delta R.T.: 0.002 min  
 Response: 84244455  
 Conc: 458.03 ng/ml

Instrument :  
 ECD\_O  
 ClientSampleId :  
 AR1242CCC500



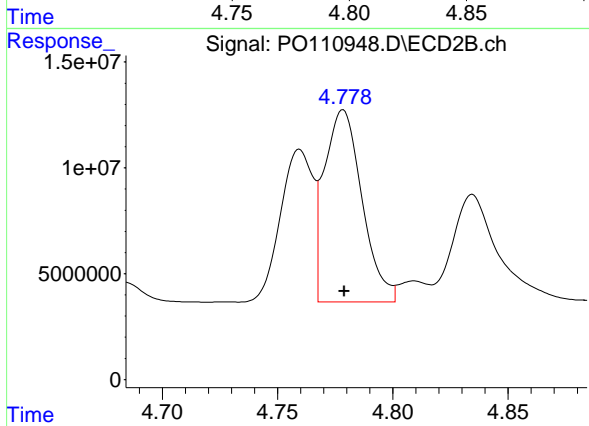
#16 AR-1242-1

R.T.: 4.760 min  
 Delta R.T.: 0.000 min  
 Response: 70797416  
 Conc: 535.02 ng/ml



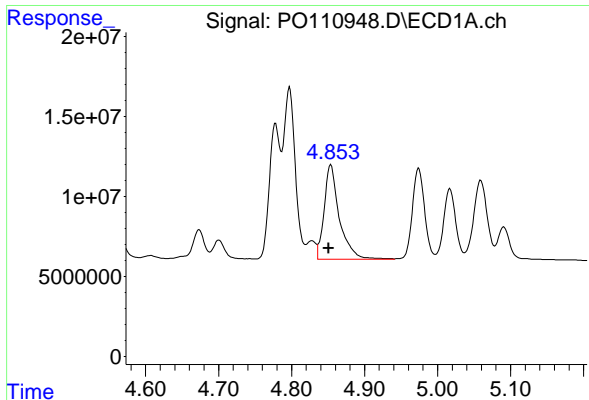
#17 AR-1242-2

R.T.: 4.797 min  
 Delta R.T.: 0.003 min  
 Response: 120525408  
 Conc: 467.87 ng/ml



#17 AR-1242-2

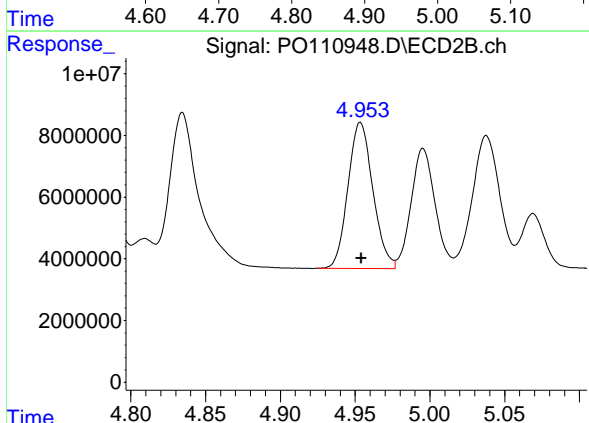
R.T.: 4.778 min  
 Delta R.T.: 0.000 min  
 Response: 102745931  
 Conc: 540.56 ng/ml



#18 AR-1242-3

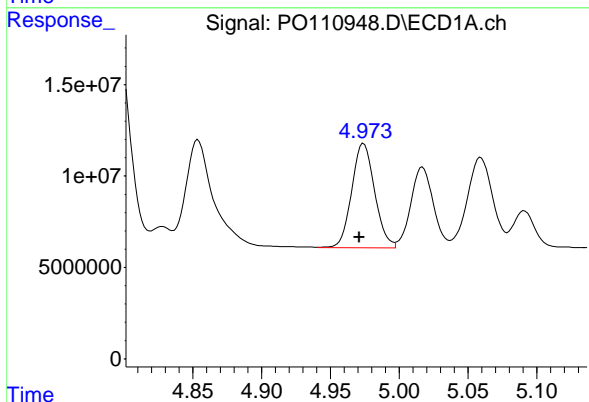
R.T.: 4.854 min  
 Delta R.T.: 0.003 min  
 Response: 85491537  
 Conc: 469.45 ng/ml

Instrument :  
 ECD\_O  
 ClientSampleId :  
 AR1242CCC500



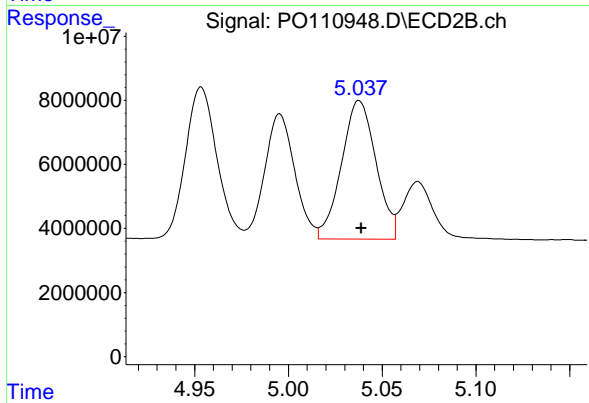
#18 AR-1242-3

R.T.: 4.954 min  
 Delta R.T.: 0.000 min  
 Response: 54832775  
 Conc: 541.18 ng/ml



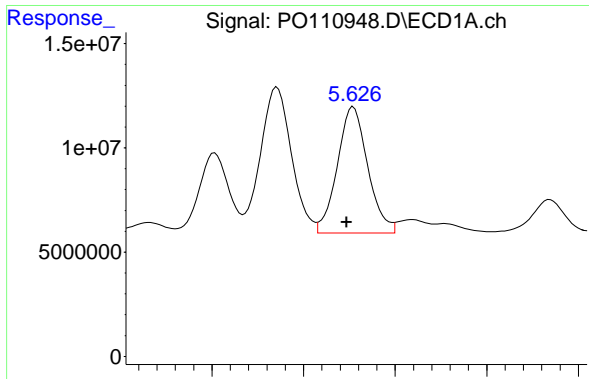
#19 AR-1242-4

R.T.: 4.974 min  
 Delta R.T.: 0.003 min  
 Response: 66276780  
 Conc: 474.58 ng/ml



#19 AR-1242-4

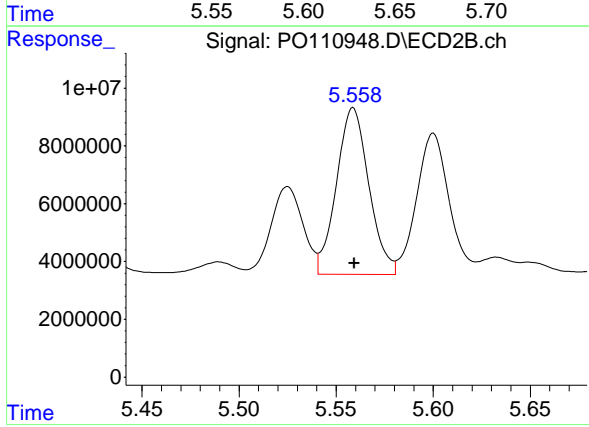
R.T.: 5.038 min  
 Delta R.T.: -0.001 min  
 Response: 55388382  
 Conc: 534.07 ng/ml



#20 AR-1242-5

R.T.: 5.627 min  
 Delta R.T.: 0.004 min  
 Response: 70080251  
 Conc: 449.54 ng/ml

Instrument :  
 ECD\_O  
 ClientSampleId :  
 AR1242CCC500



#20 AR-1242-5

R.T.: 5.559 min  
 Delta R.T.: 0.000 min  
 Response: 66948007  
 Conc: 528.96 ng/ml