

Data Path : Z:\pestpcbsrv\HPCHEM1\ECD_0\Data\P0050924\
 Data File : P0103552.D
 Signal(s) : Signal #1: ECD1A.ch Signal #2: ECD2B.ch
 Acq On : 10 May 2024 04:57
 Operator : YP/AJ
 Sample : I.BLK
 Misc :
 ALS Vial : 2 Sample Multiplier: 1

Instrument :
 ECD_0
 ClientSampleId :
 I.BLK

Integration File signal 1: autoint1.e
 Integration File signal 2: autoint2.e
 Quant Time: May 10 05:17:25 2024
 Quant Method : Z:\pestpcbsrv\HPCHEM1\ECD_0\methods\P0050624.M
 Quant Title : GC EXTRACTABLES
 QLast Update : Tue May 07 04:55:35 2024
 Response via : Initial Calibration
 Integrator: ChemStation

Volume Inj. : 2 µl
 Signal #1 Phase : ZB-MR2 Signal #2 Phase: ZB-MR2
 Signal #1 Info : 30Mx0.32mmx 0.50µ Signal #2 Info : 30M x 0.32mm x 0.25µm

Compound	RT#1	RT#2	Resp#1	Resp#2	ng/ml	ng/ml

System Monitoring Compounds						
1) SA Tetrachlo...	4.450	3.586	160.2E6	56325033	20.822	22.358
2) SA Decachlor...	10.208	8.547	109.6E6	26293878	23.114	20.212
Target Compounds						
3) L1 AR-1016-1	5.602	4.680	1695774	889323	6.974	11.334 #
4) L1 AR-1016-2	5.648	4.680	991218	889323	2.862	7.425 #
5) L1 AR-1016-3	5.689	4.875	3494378	586329	16.852	8.773 #
6) L1 AR-1016-4	5.790	4.917	637413	846032	3.739	18.410 #
7) L1 AR-1016-5	6.102	5.125	861239	2727684	5.437	43.686 #
8) L2 AR-1221-1	4.652	3.800	298737	46262	3.366	1.502 #
9) L2 AR-1221-2	4.734	3.883	233359	885986	3.467	36.427 #
10) L2 AR-1221-3	4.823	3.963	840982	64527	4.187	0.900 #
11) L3 AR-1232-1	4.823	3.963	840982	64527	5.064	1.083 #
12) L3 AR-1232-2	5.356	4.680	594366	889323	6.962	15.515 #
13) L3 AR-1232-3	5.648	4.875	991218	586329	6.050	18.935 #
14) L3 AR-1232-4	5.790	4.945	637413	821860	8.081	31.997 #
15) L3 AR-1232-5	5.889	5.125	770015	2727684	13.619	98.152 #
16) L4 AR-1242-1	5.602	4.680	1695774	889323	8.287	13.452 #
17) L4 AR-1242-2	5.648	4.680	991218	889323	3.403	8.934 #
18) L4 AR-1242-3	5.689	4.875	3494378	586329	20.160	10.713 #
19) L4 AR-1242-4	5.790	4.945	637413	821860	4.438	16.545 #
20) L4 AR-1242-5	6.530	5.458	1591315	534190	11.114	8.738
21) L5 AR-1248-1	5.602	4.680	1695774	889323	11.050	17.625 #
22) L5 AR-1248-2	5.889	4.917	770015	846032	3.744	12.843 #
23) L5 AR-1248-3	6.102	4.945	861239	821860	3.824	11.353 #
24) L5 AR-1248-4	6.501	5.125	1826054	2727684	7.096	32.274 #
25) L5 AR-1248-5	6.530	5.484	1591315	4042299	6.532	46.035 #
26) L6 AR-1254-1	6.475	5.458	5074655	534190	20.607	4.383 #
27) L6 AR-1254-2	6.700	5.607	810709	1495632	2.240	14.163 #
28) L6 AR-1254-3	7.058	6.016	5311694	2239831	14.591	13.032
29) L6 AR-1254-4	7.343	6.252	2687613	537296	9.482	5.214 #
30) L6 AR-1254-5	7.747	6.661	235964	468822	0.885	3.398 #
31) L7 AR-1260-1	7.216	6.141	1503021	416295	5.747	3.940 #
32) L7 AR-1260-2	7.466	6.303	330412	1457697	1.015	11.646 #
33) L7 AR-1260-3	7.842	6.477	1034653	265528	4.173	2.248 #
34) L7 AR-1260-4	8.036	6.951	1469012	350480	6.028	3.927 #
35) L7 AR-1260-5	8.374	7.178	622650	511709	1.147	2.470 #
36) L8 AR-1262-1	7.747	6.661	235964	468822	1.025	6.114 #
37) L8 AR-1262-2	8.374	6.951	622650	350480	0.959	2.974 #
38) L8 AR-1262-3	8.686	7.470	164648	140815	0.384	1.559 #
39) L8 AR-1262-4	8.805	7.530	1513639	129386	4.504	0.774 #
40) L8 AR-1262-5	9.447	8.015	96290	134725	0.406	1.867 #
41) L9 AR-1268-1	8.686	7.470	164648	140815	0.212	0.547 #

Data Path : Z:\pestpcbsrv\HPCHEM1\ECD_0\Data\P0050924\
 Data File : P0103552.D
 Signal(s) : Signal #1: ECD1A.ch Signal #2: ECD2B.ch
 Acq On : 10 May 2024 04:57
 Operator : YP/AJ
 Sample : I.BLK
 Misc :
 ALS Vial : 2 Sample Multiplier: 1

Instrument :
 ECD_0
 ClientSampleId :
 I.BLK

Integration File signal 1: autoint1.e
 Integration File signal 2: autoint2.e
 Quant Time: May 10 05:17:25 2024
 Quant Method : Z:\pestpcbsrv\HPCHEM1\ECD_0\methods\P0050624.M
 Quant Title : GC EXTRACTABLES
 QLast Update : Tue May 07 04:55:35 2024
 Response via : Initial Calibration
 Integrator: ChemStation

Volume Inj. : 2 µl
 Signal #1 Phase : ZB-MR1 Signal #2 Phase: ZB-MR2
 Signal #1 Info : 30Mx0.32mmx 0.50µ Signal #2 Info : 30M x 0.32mm x 0.25µm

	Compound	RT#1	RT#2	Resp#1	Resp#2	ng/ml	ng/ml
42)	L9 AR-1268-2	8.805	7.530	1513639	129386	2.118	0.518 #
43)	L9 AR-1268-3	9.028	7.734	369603	345931	0.587	1.720 #
44)	L9 AR-1268-4	9.447	8.294	96290	140357	0.380	0.259 #
45)	L9 AR-1268-5	9.844	8.547	-494375	26293878	N.D.	112.974 #

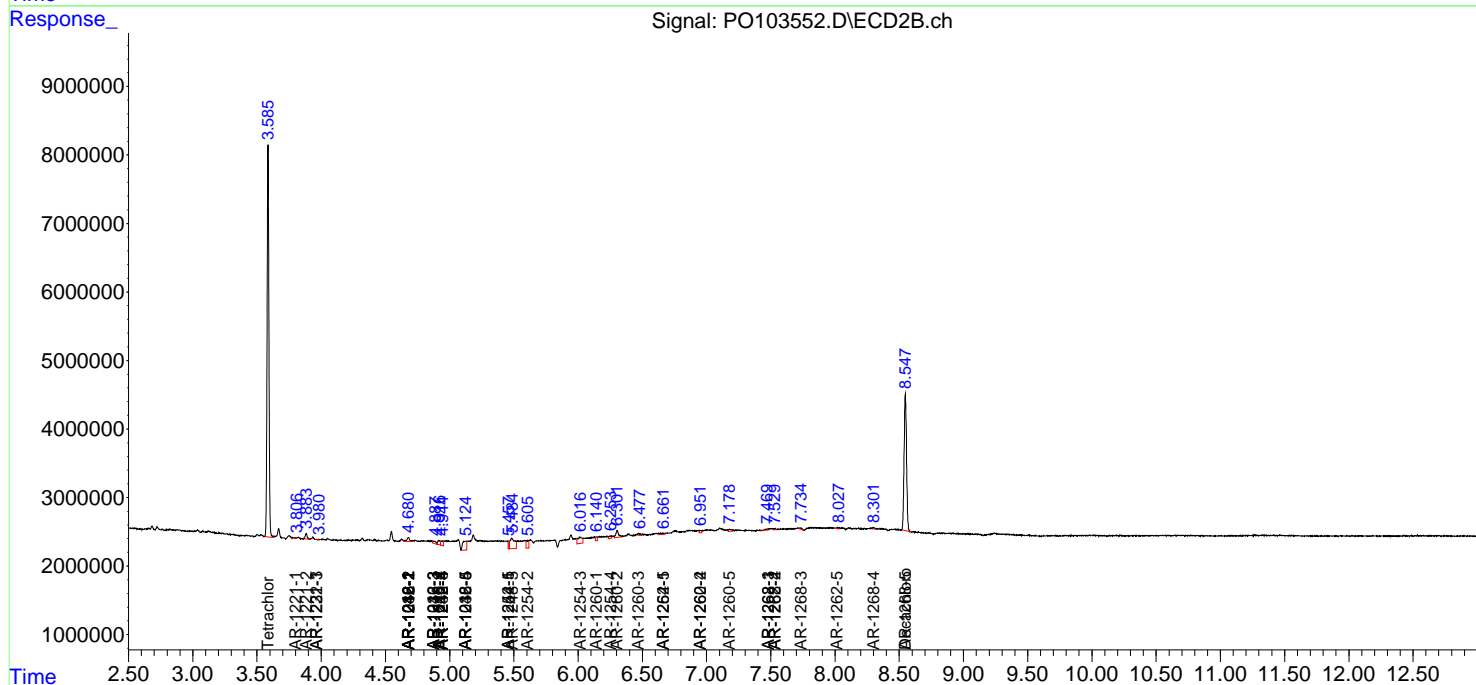
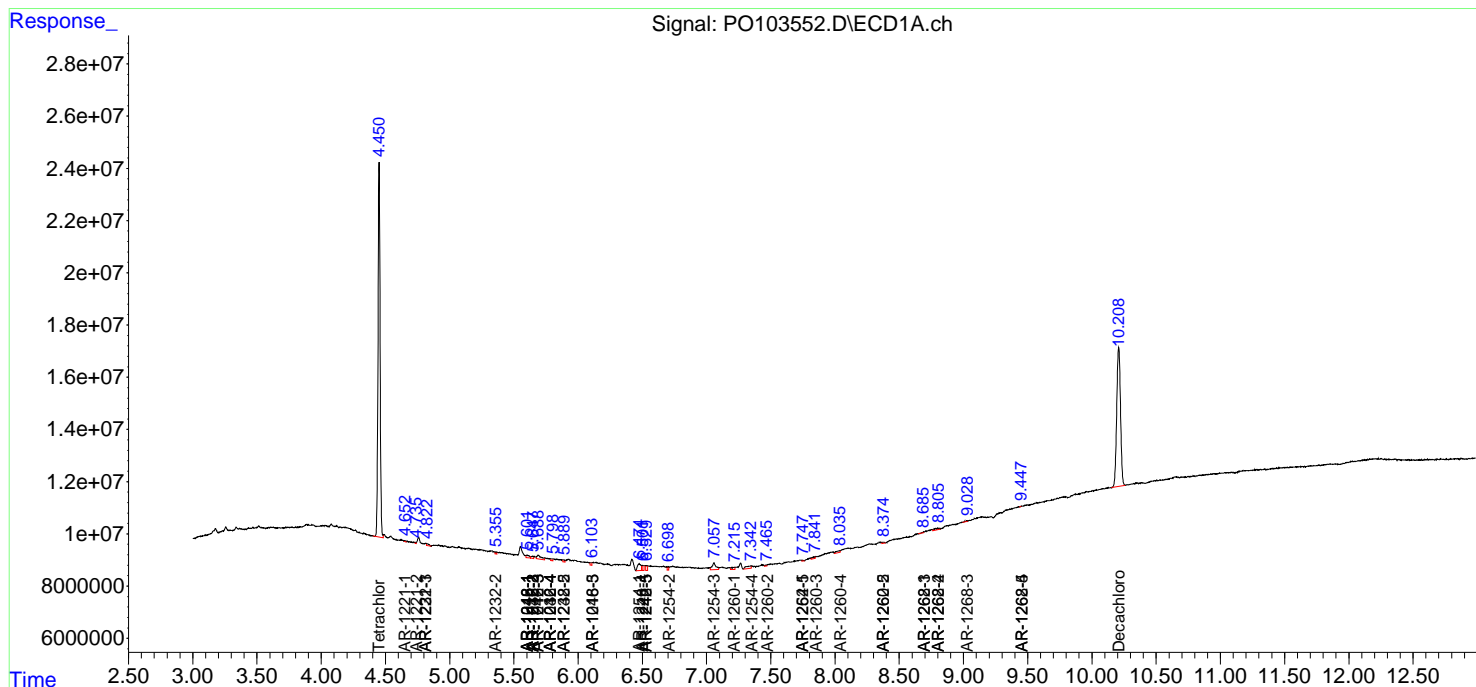
(f)=RT Delta > 1/2 Window (#)=Amounts differ by > 25% (m)=manual int.

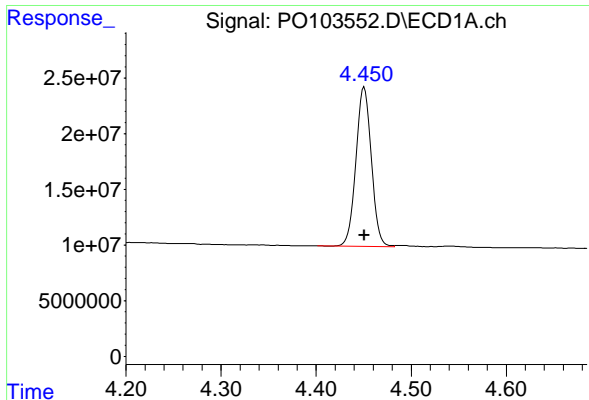
Data Path : Z:\pestpcbsrv\HPCHEM1\ECD_O\Data\PO050924\
 Data File : PO103552.D
 Signal(s) : Signal #1: ECD1A.ch Signal #2: ECD2B.ch
 Acq On : 10 May 2024 04:57
 Operator : YP/AJ
 Sample : I.BLK
 Misc :
 ALS Vial : 2 Sample Multiplier: 1

Instrument :
 ECD_O
 ClientSampleId :
 I.BLK

Integration File signal 1: autoint1.e
 Integration File signal 2: autoint2.e
 Quant Time: May 10 05:17:25 2024
 Quant Method : Z:\pestpcbsrv\HPCHEM1\ECD_O\methods\PO050624.M
 Quant Title : GC EXTRACTABLES
 QLast Update : Tue May 07 04:55:35 2024
 Response via : Initial Calibration
 Integrator: ChemStation

Volume Inj. : 2 µl
 Signal #1 Phase : ZB-MR1 Signal #2 Phase: ZB-MR2
 Signal #1 Info : 30Mx0.32mmx 0.50µ Signal #2 Info : 30M x 0.32mm x 0.25µm

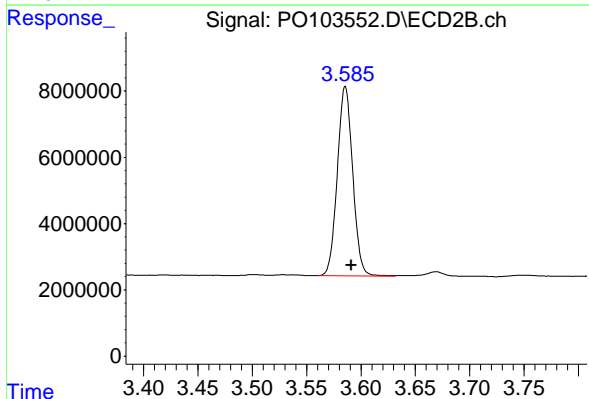




#1 Tetrachloro-m-xylene

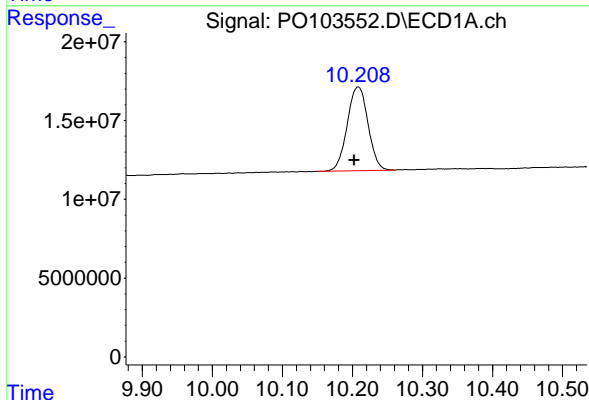
R.T.: 4.450 min
 Delta R.T.: 0.000 min
 Response: 160238596
 Conc: 20.82 ng/ml

Instrument :
 ECD_O
 ClientSampleId :
 I.BLK



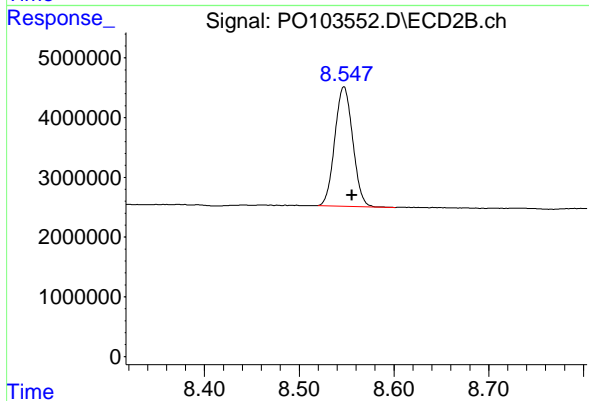
#1 Tetrachloro-m-xylene

R.T.: 3.586 min
 Delta R.T.: -0.006 min
 Response: 56325033
 Conc: 22.36 ng/ml



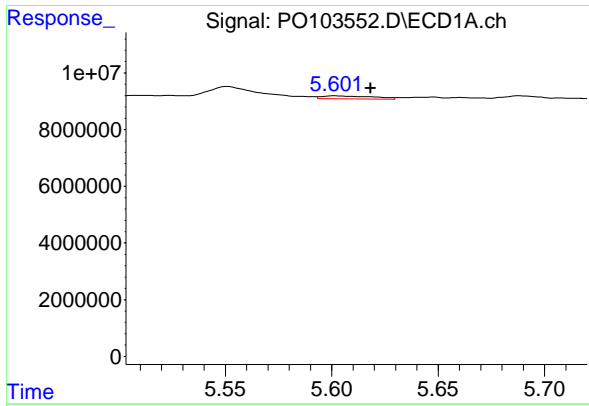
#2 Decachlorobiphenyl

R.T.: 10.208 min
 Delta R.T.: 0.006 min
 Response: 109564987
 Conc: 23.11 ng/ml



#2 Decachlorobiphenyl

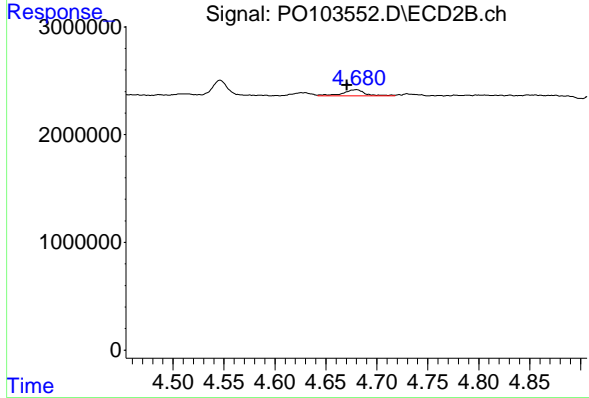
R.T.: 8.547 min
 Delta R.T.: -0.009 min
 Response: 26293878
 Conc: 20.21 ng/ml



#3 AR-1016-1

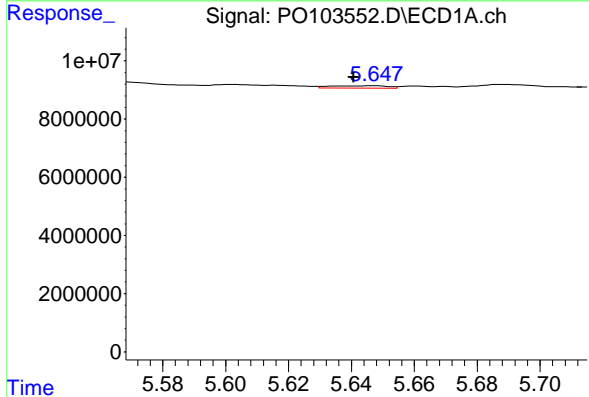
R.T.: 5.602 min
 Delta R.T.: -0.016 min
 Response: 1695774
 Conc: 6.97 ng/ml

Instrument :
 ECD_O
 ClientSampleId :
 I.BLK



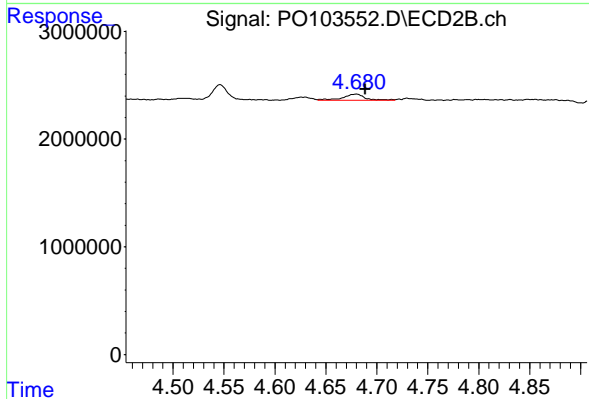
#3 AR-1016-1

R.T.: 4.680 min
 Delta R.T.: 0.009 min
 Response: 889323
 Conc: 11.33 ng/ml



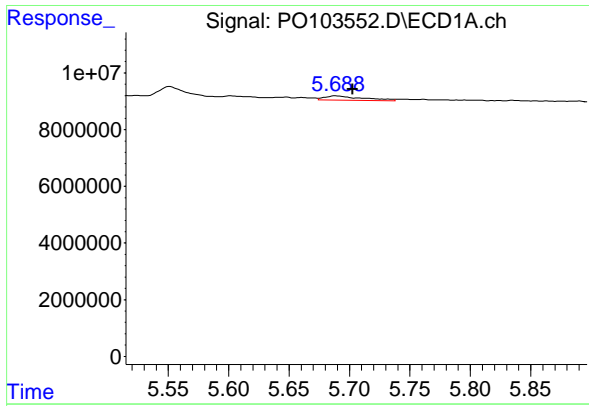
#4 AR-1016-2

R.T.: 5.648 min
 Delta R.T.: 0.007 min
 Response: 991218
 Conc: 2.86 ng/ml



#4 AR-1016-2

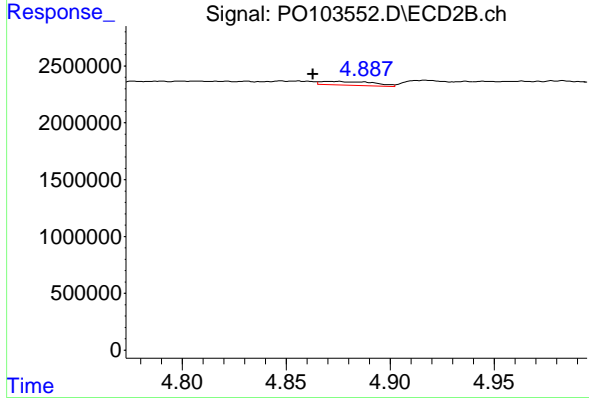
R.T.: 4.680 min
 Delta R.T.: -0.009 min
 Response: 889323
 Conc: 7.42 ng/ml



#5 AR-1016-3

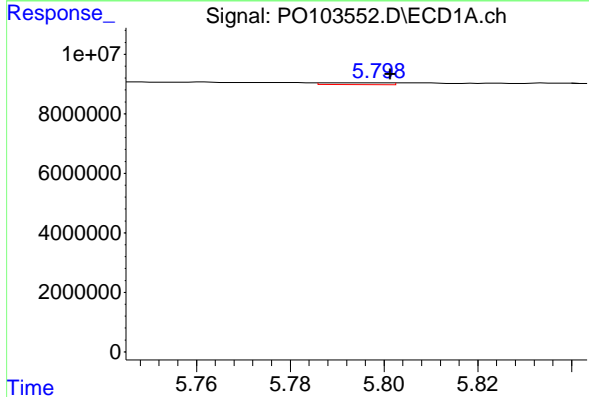
R.T.: 5.689 min
 Delta R.T.: -0.014 min
 Response: 3494378
 Conc: 16.85 ng/ml

Instrument :
 ECD_O
 ClientSampleId :
 I.BLK



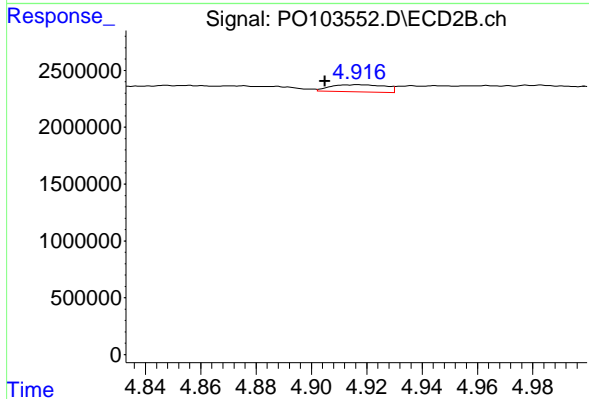
#5 AR-1016-3

R.T.: 4.875 min
 Delta R.T.: 0.012 min
 Response: 586329
 Conc: 8.77 ng/ml



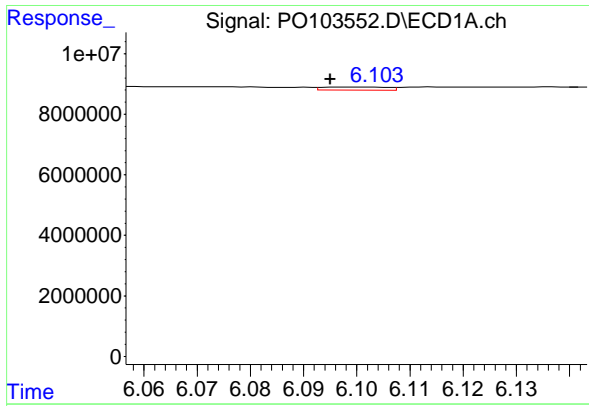
#6 AR-1016-4

R.T.: 5.790 min
 Delta R.T.: -0.011 min
 Response: 637413
 Conc: 3.74 ng/ml



#6 AR-1016-4

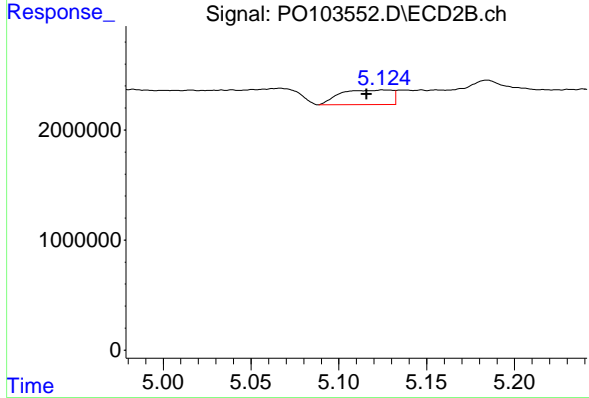
R.T.: 4.917 min
 Delta R.T.: 0.012 min
 Response: 846032
 Conc: 18.41 ng/ml



#7 AR-1016-5

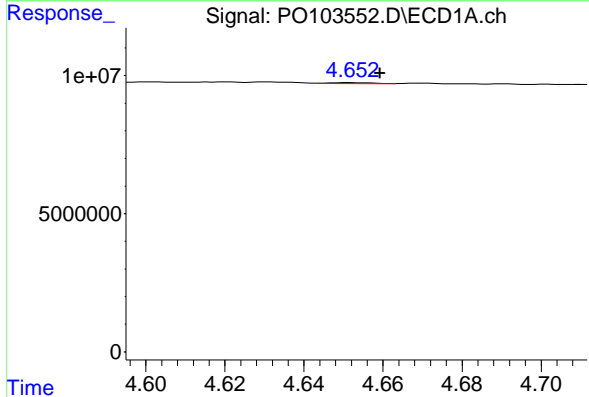
R.T.: 6.102 min
 Delta R.T.: 0.007 min
 Response: 861239
 Conc: 5.44 ng/ml

Instrument :
 ECD_O
 ClientSampleId :
 I.BLK



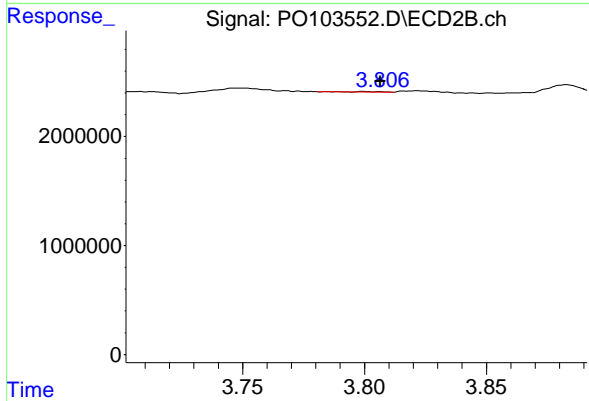
#7 AR-1016-5

R.T.: 5.125 min
 Delta R.T.: 0.009 min
 Response: 2727684
 Conc: 43.69 ng/ml



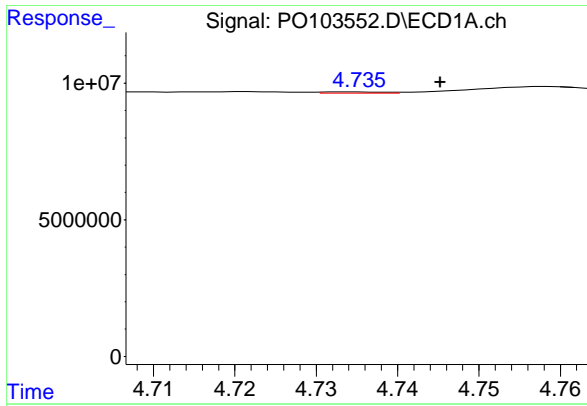
#8 AR-1221-1

R.T.: 4.652 min
 Delta R.T.: -0.007 min
 Response: 298737
 Conc: 3.37 ng/ml



#8 AR-1221-1

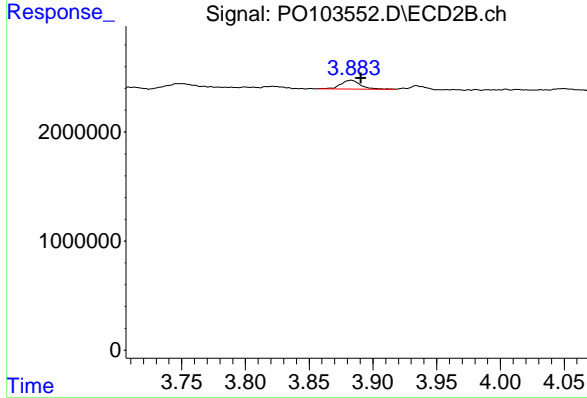
R.T.: 3.800 min
 Delta R.T.: -0.007 min
 Response: 46262
 Conc: 1.50 ng/ml



#9 AR-1221-2

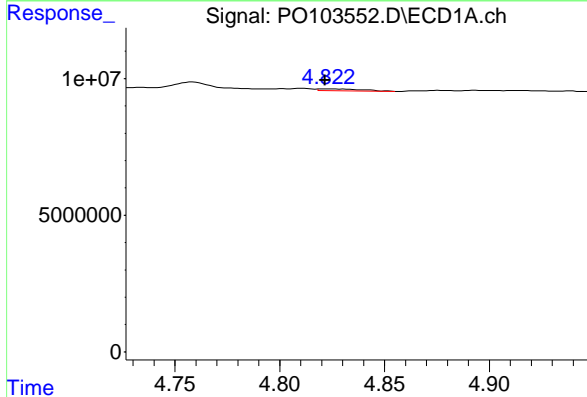
R.T.: 4.734 min
 Delta R.T.: -0.011 min
 Response: 233359
 Conc: 3.47 ng/ml

Instrument :
 ECD_O
 ClientSampleId :
 I.BLK



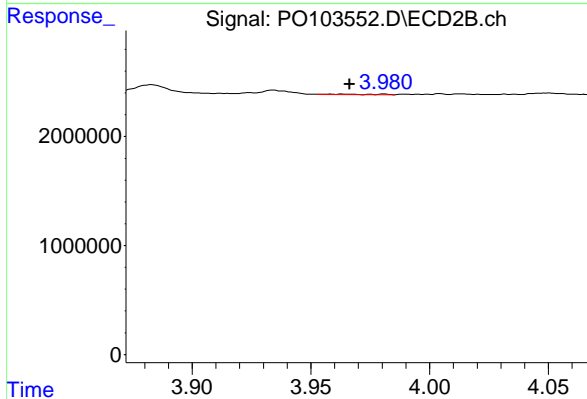
#9 AR-1221-2

R.T.: 3.883 min
 Delta R.T.: -0.008 min
 Response: 885986
 Conc: 36.43 ng/ml



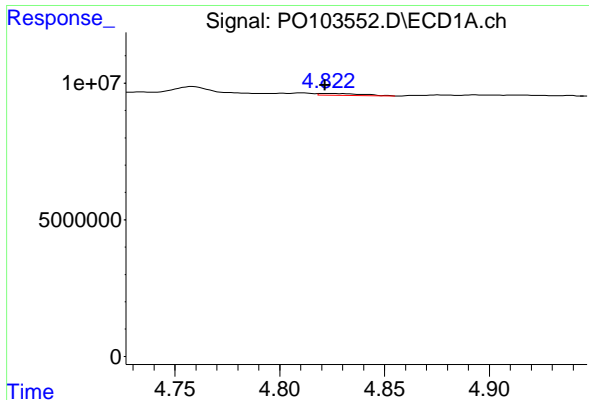
#10 AR-1221-3

R.T.: 4.823 min
 Delta R.T.: 0.001 min
 Response: 840982
 Conc: 4.19 ng/ml



#10 AR-1221-3

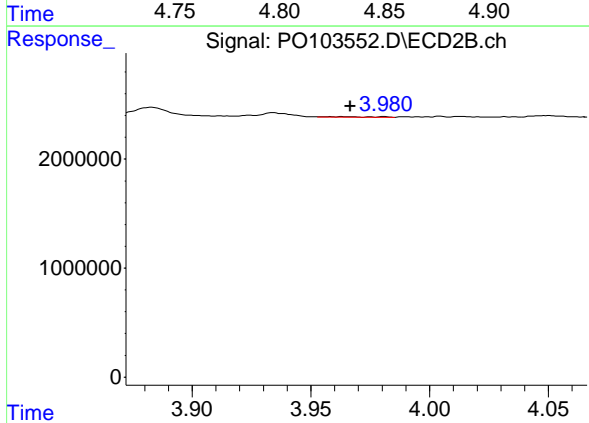
R.T.: 3.963 min
 Delta R.T.: -0.003 min
 Response: 64527
 Conc: 0.90 ng/ml



#11 AR-1232-1

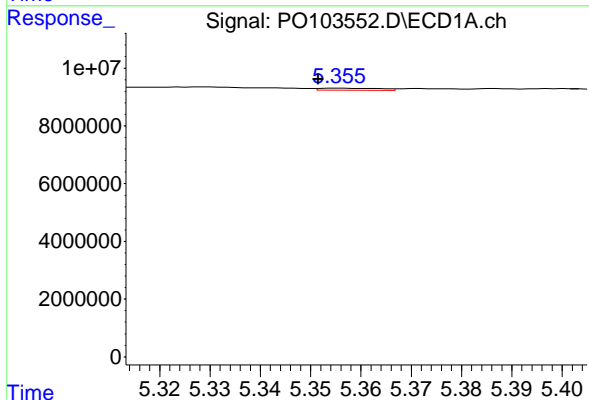
R.T.: 4.823 min
 Delta R.T.: 0.001 min
 Response: 840982
 Conc: 5.06 ng/ml

Instrument :
 ECD_O
 ClientSampleId :
 I.BLK



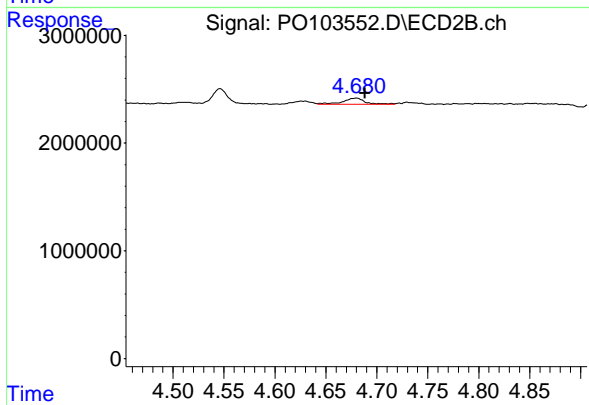
#11 AR-1232-1

R.T.: 3.963 min
 Delta R.T.: -0.003 min
 Response: 64527
 Conc: 1.08 ng/ml



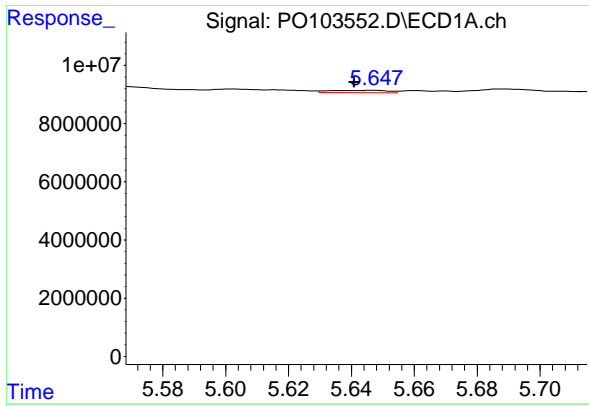
#12 AR-1232-2

R.T.: 5.356 min
 Delta R.T.: 0.004 min
 Response: 594366
 Conc: 6.96 ng/ml



#12 AR-1232-2

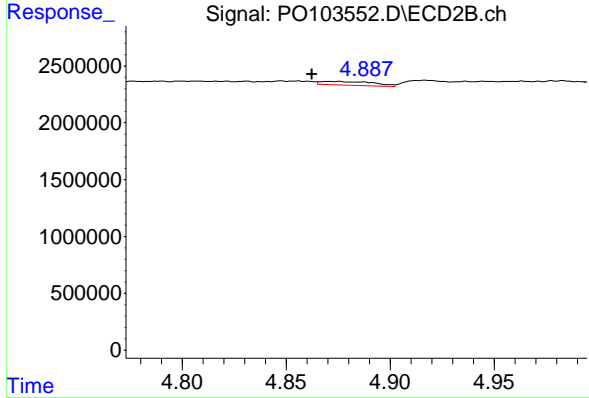
R.T.: 4.680 min
 Delta R.T.: -0.009 min
 Response: 889323
 Conc: 15.52 ng/ml



#13 AR-1232-3

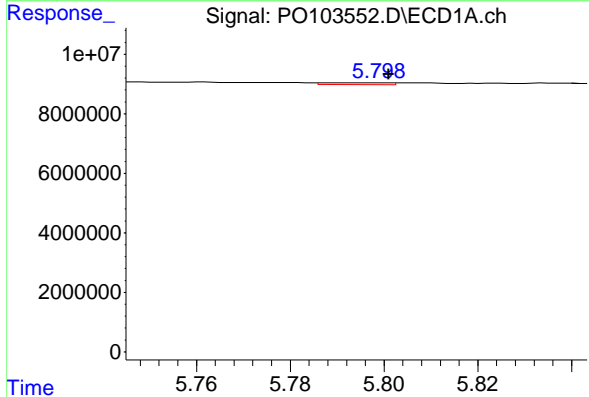
R.T.: 5.648 min
 Delta R.T.: 0.007 min
 Response: 991218
 Conc: 6.05 ng/ml

Instrument :
 ECD_O
 ClientSampleId :
 I.BLK



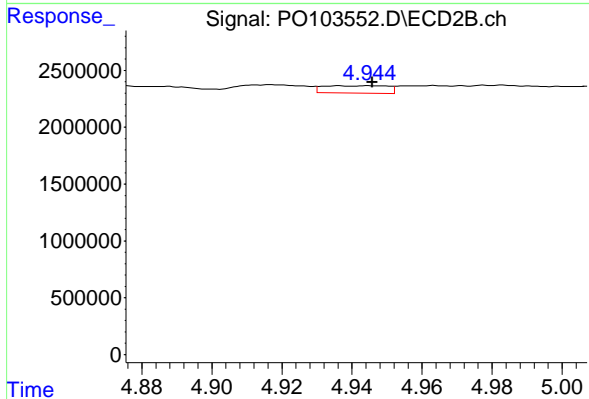
#13 AR-1232-3

R.T.: 4.875 min
 Delta R.T.: 0.013 min
 Response: 586329
 Conc: 18.94 ng/ml



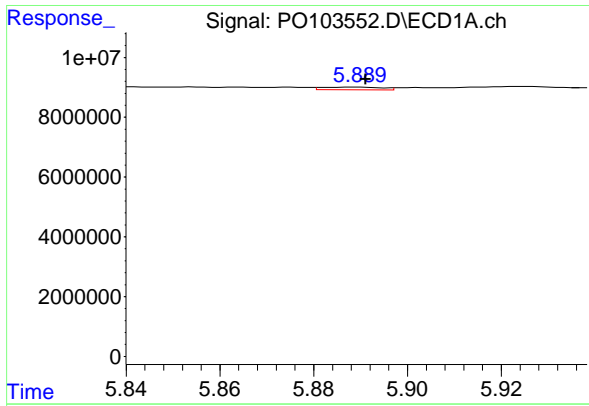
#14 AR-1232-4

R.T.: 5.790 min
 Delta R.T.: -0.011 min
 Response: 637413
 Conc: 8.08 ng/ml



#14 AR-1232-4

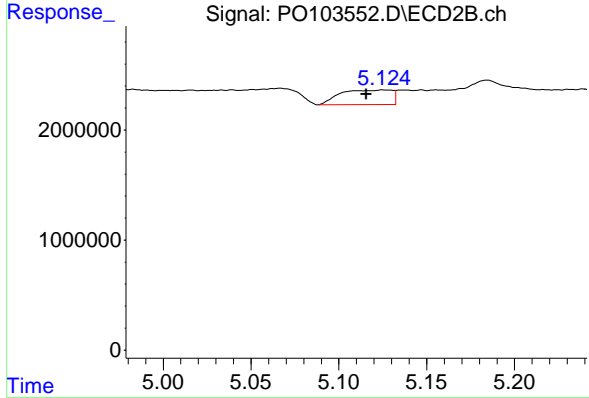
R.T.: 4.945 min
 Delta R.T.: 0.000 min
 Response: 821860
 Conc: 32.00 ng/ml



#15 AR-1232-5

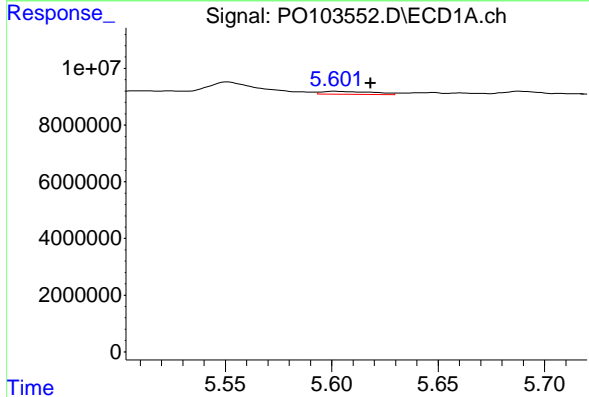
R.T.: 5.889 min
 Delta R.T.: -0.002 min
 Response: 770015
 Conc: 13.62 ng/ml

Instrument :
 ECD_O
 ClientSampleId :
 I.BLK



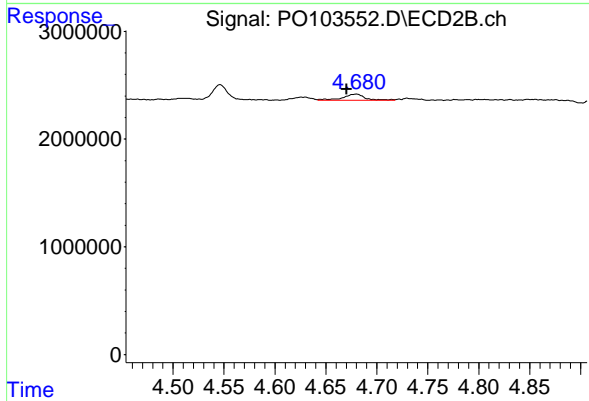
#15 AR-1232-5

R.T.: 5.125 min
 Delta R.T.: 0.010 min
 Response: 2727684
 Conc: 98.15 ng/ml



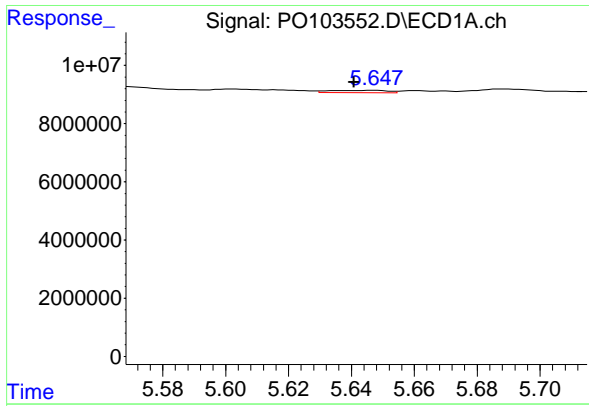
#16 AR-1242-1

R.T.: 5.602 min
 Delta R.T.: -0.016 min
 Response: 1695774
 Conc: 8.29 ng/ml



#16 AR-1242-1

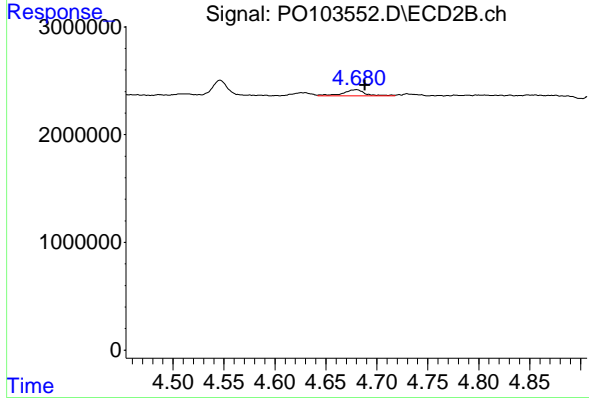
R.T.: 4.680 min
 Delta R.T.: 0.010 min
 Response: 889323
 Conc: 13.45 ng/ml



#17 AR-1242-2

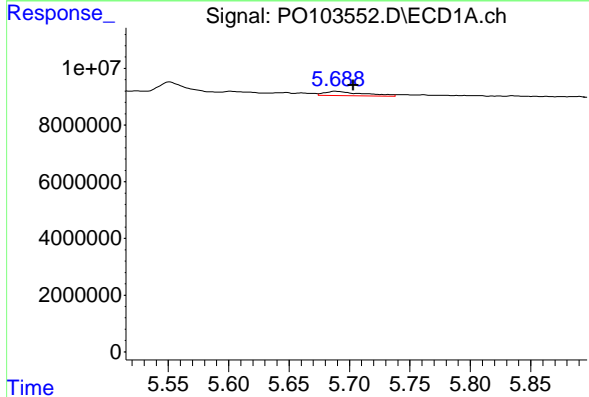
R.T.: 5.648 min
 Delta R.T.: 0.007 min
 Response: 991218
 Conc: 3.40 ng/ml

Instrument :
 ECD_O
 ClientSampleId :
 I.BLK



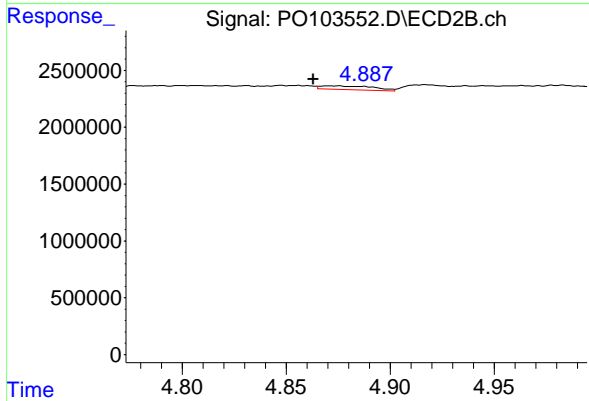
#17 AR-1242-2

R.T.: 4.680 min
 Delta R.T.: -0.009 min
 Response: 889323
 Conc: 8.93 ng/ml



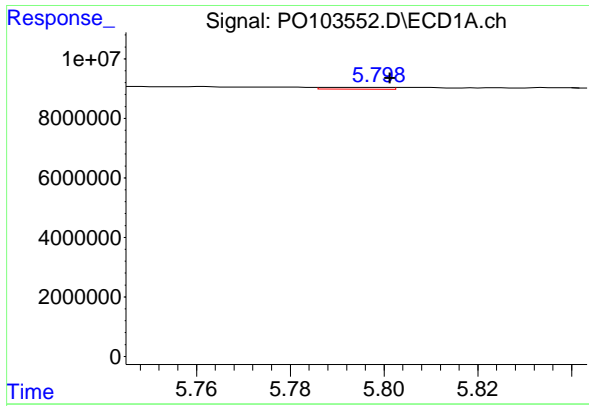
#18 AR-1242-3

R.T.: 5.689 min
 Delta R.T.: -0.015 min
 Response: 3494378
 Conc: 20.16 ng/ml



#18 AR-1242-3

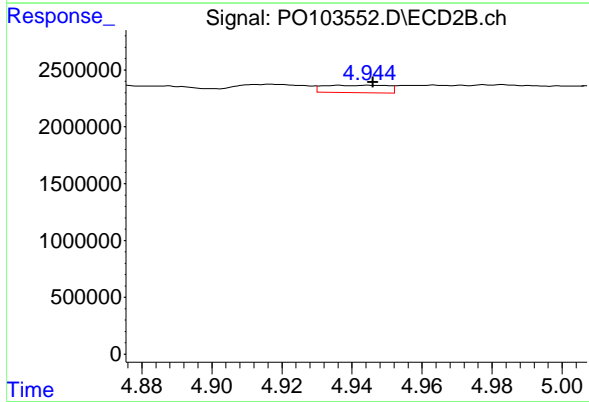
R.T.: 4.875 min
 Delta R.T.: 0.012 min
 Response: 586329
 Conc: 10.71 ng/ml



#19 AR-1242-4

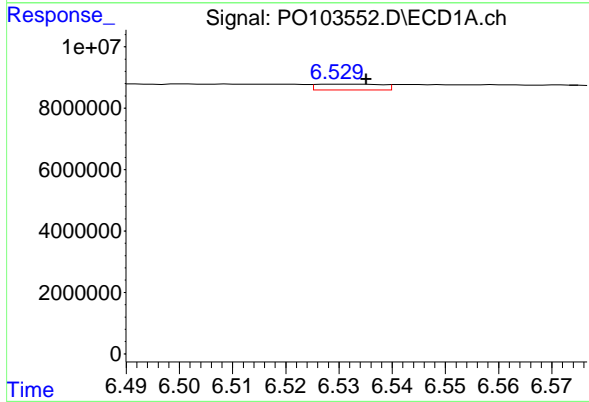
R.T.: 5.790 min
 Delta R.T.: -0.011 min
 Response: 637413
 Conc: 4.44 ng/ml

Instrument :
 ECD_O
 ClientSampleId :
 I.BLK



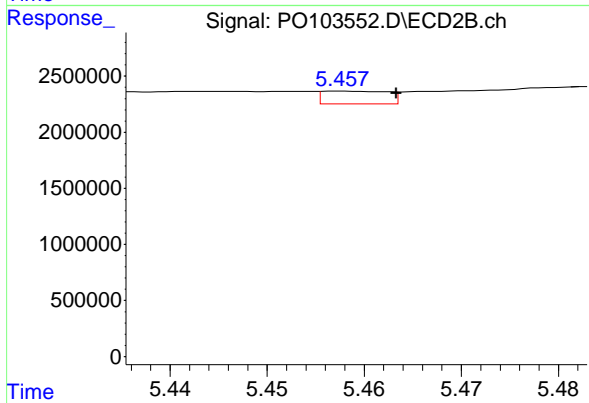
#19 AR-1242-4

R.T.: 4.945 min
 Delta R.T.: -0.001 min
 Response: 821860
 Conc: 16.54 ng/ml



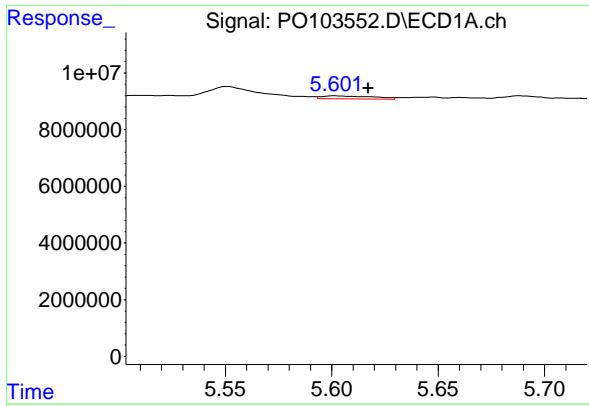
#20 AR-1242-5

R.T.: 6.530 min
 Delta R.T.: -0.005 min
 Response: 1591315
 Conc: 11.11 ng/ml



#20 AR-1242-5

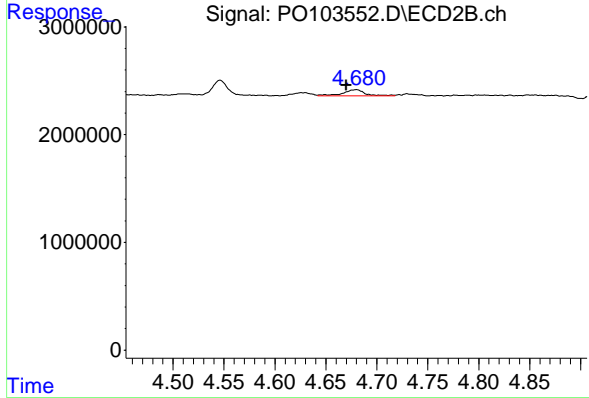
R.T.: 5.458 min
 Delta R.T.: -0.005 min
 Response: 534190
 Conc: 8.74 ng/ml



#21 AR-1248-1

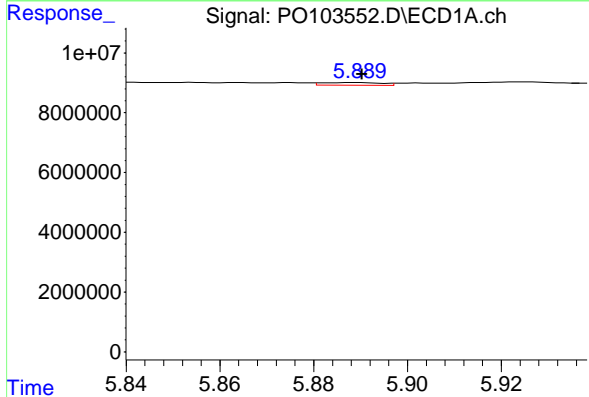
R.T.: 5.602 min
 Delta R.T.: -0.015 min
 Response: 1695774
 Conc: 11.05 ng/ml

Instrument :
 ECD_O
 ClientSampleId :
 I.BLK



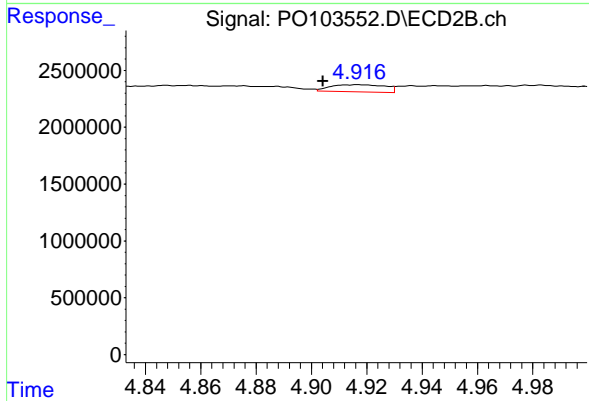
#21 AR-1248-1

R.T.: 4.680 min
 Delta R.T.: 0.010 min
 Response: 889323
 Conc: 17.63 ng/ml



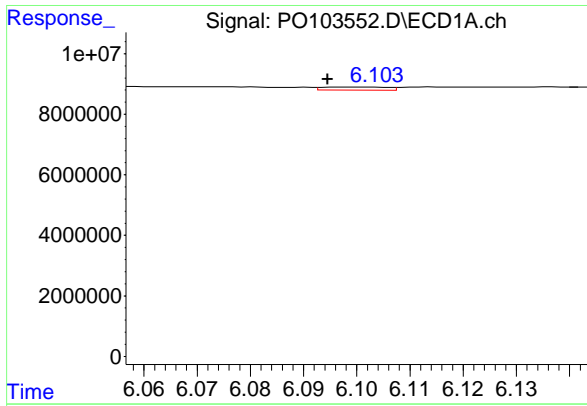
#22 AR-1248-2

R.T.: 5.889 min
 Delta R.T.: 0.000 min
 Response: 770015
 Conc: 3.74 ng/ml



#22 AR-1248-2

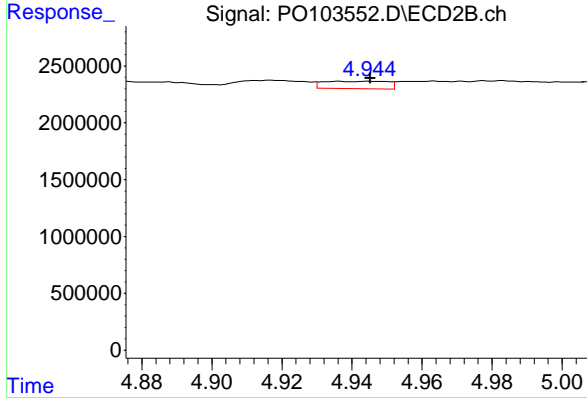
R.T.: 4.917 min
 Delta R.T.: 0.013 min
 Response: 846032
 Conc: 12.84 ng/ml



#23 AR-1248-3

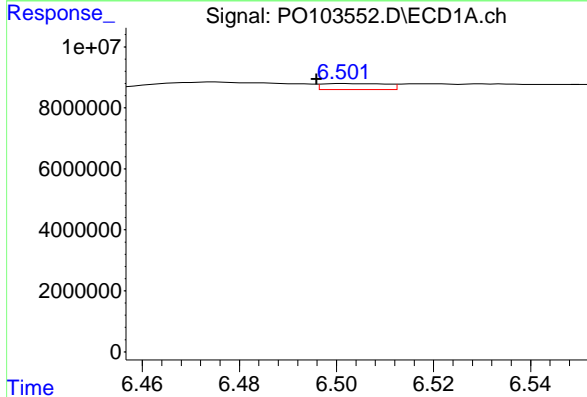
R.T.: 6.102 min
 Delta R.T.: 0.008 min
 Response: 861239
 Conc: 3.82 ng/ml

Instrument :
 ECD_O
 ClientSampleId :
 I.BLK



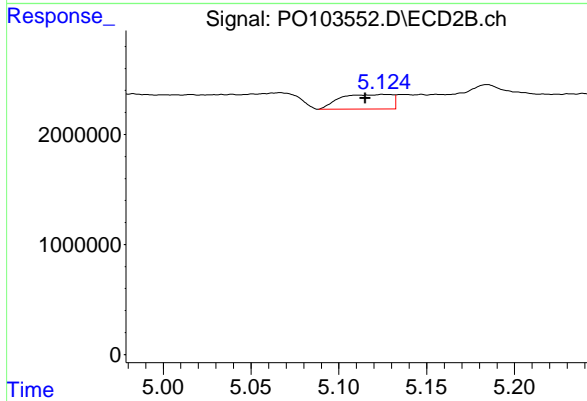
#23 AR-1248-3

R.T.: 4.945 min
 Delta R.T.: 0.000 min
 Response: 821860
 Conc: 11.35 ng/ml



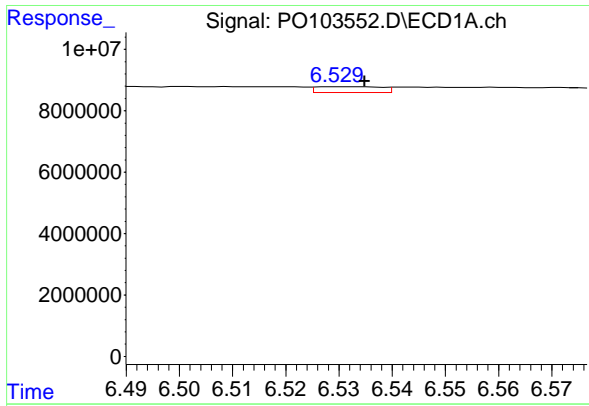
#24 AR-1248-4

R.T.: 6.501 min
 Delta R.T.: 0.005 min
 Response: 1826054
 Conc: 7.10 ng/ml



#24 AR-1248-4

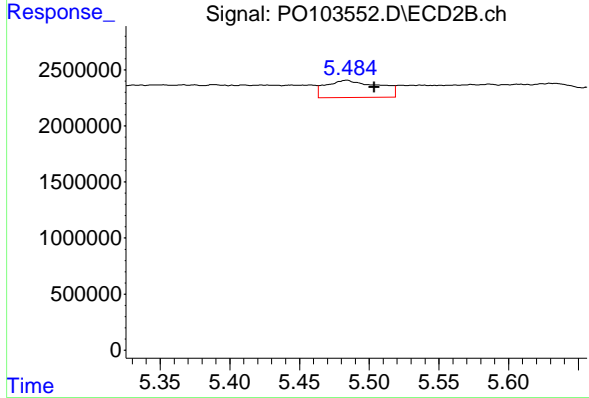
R.T.: 5.125 min
 Delta R.T.: 0.010 min
 Response: 2727684
 Conc: 32.27 ng/ml



#25 AR-1248-5

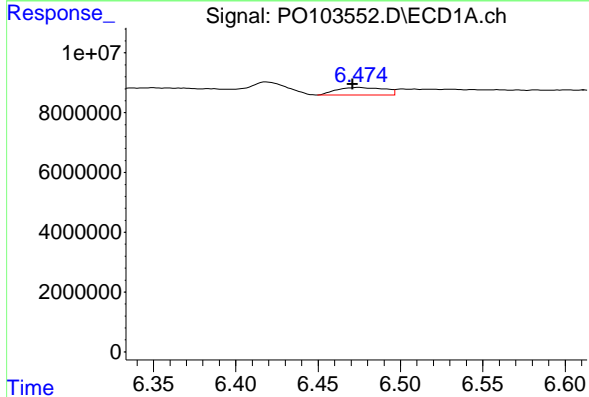
R.T.: 6.530 min
 Delta R.T.: -0.005 min
 Response: 1591315
 Conc: 6.53 ng/ml

Instrument :
 ECD_O
 ClientSampleId :
 I.BLK



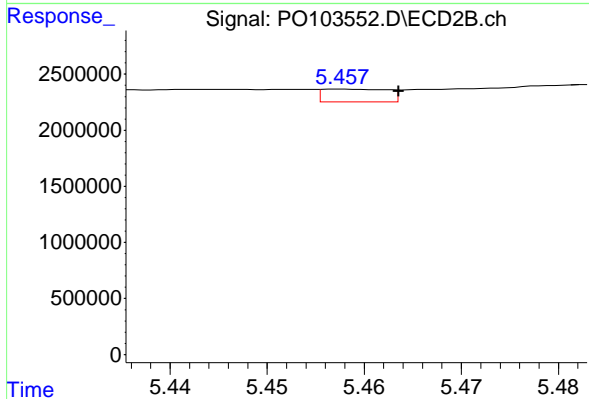
#25 AR-1248-5

R.T.: 5.484 min
 Delta R.T.: -0.020 min
 Response: 4042299
 Conc: 46.03 ng/ml



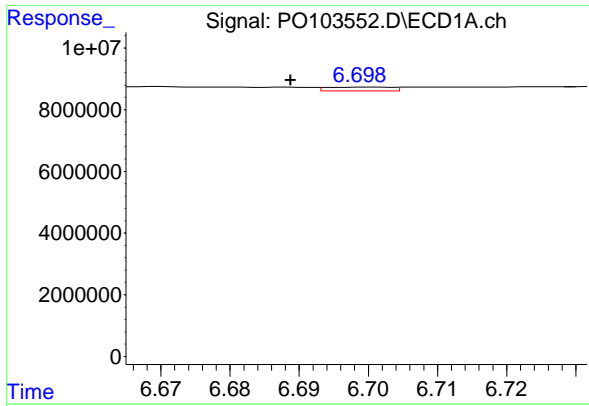
#26 AR-1254-1

R.T.: 6.475 min
 Delta R.T.: 0.004 min
 Response: 5074655
 Conc: 20.61 ng/ml



#26 AR-1254-1

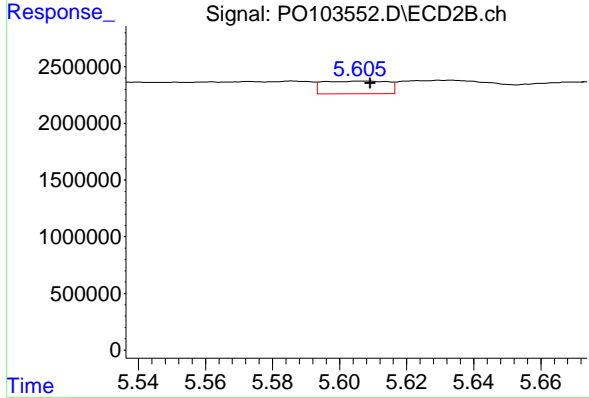
R.T.: 5.458 min
 Delta R.T.: -0.006 min
 Response: 534190
 Conc: 4.38 ng/ml



#27 AR-1254-2

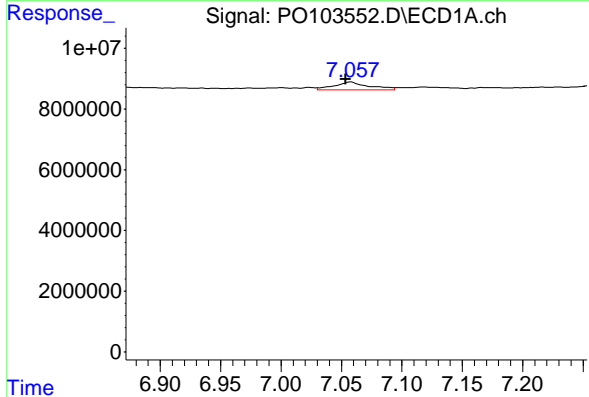
R.T.: 6.700 min
 Delta R.T.: 0.011 min
 Response: 810709
 Conc: 2.24 ng/ml

Instrument :
 ECD_O
 ClientSampleId :
 I.BLK



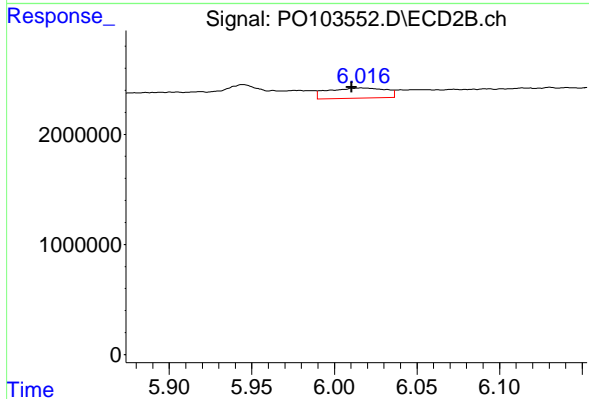
#27 AR-1254-2

R.T.: 5.607 min
 Delta R.T.: -0.002 min
 Response: 1495632
 Conc: 14.16 ng/ml



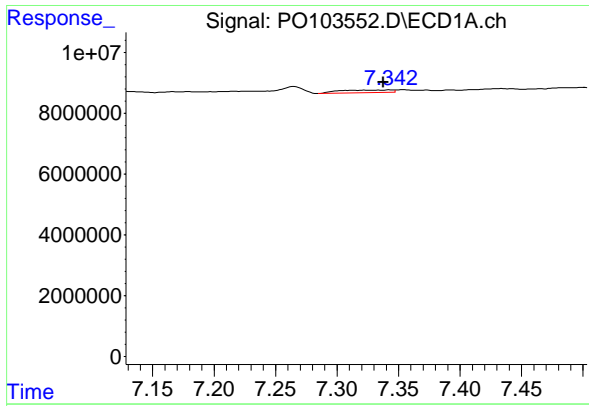
#28 AR-1254-3

R.T.: 7.058 min
 Delta R.T.: 0.004 min
 Response: 5311694
 Conc: 14.59 ng/ml



#28 AR-1254-3

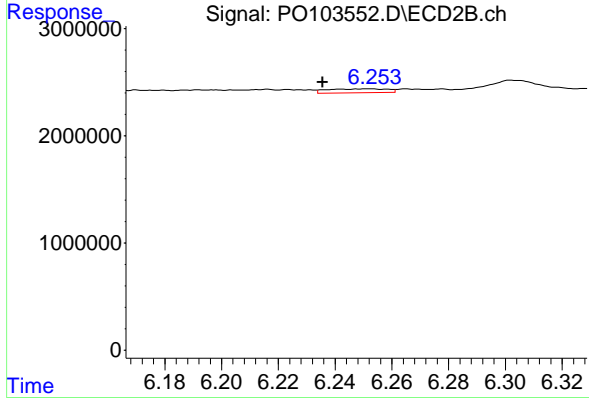
R.T.: 6.016 min
 Delta R.T.: 0.005 min
 Response: 2239831
 Conc: 13.03 ng/ml



#29 AR-1254-4

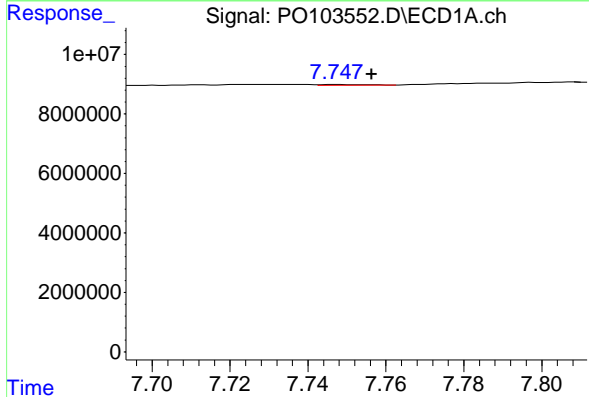
R.T.: 7.343 min
 Delta R.T.: 0.005 min
 Response: 2687613
 Conc: 9.48 ng/ml

Instrument :
 ECD_O
 ClientSampleId :
 I.BLK



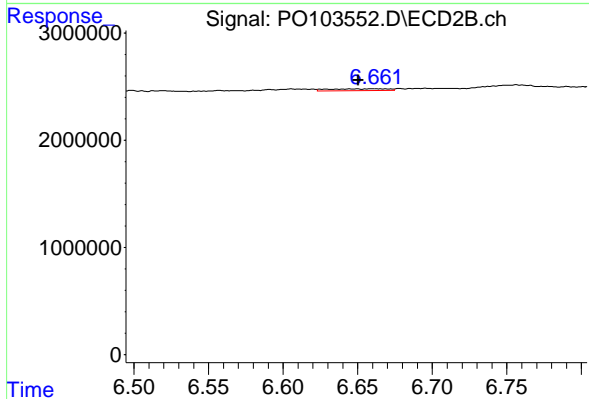
#29 AR-1254-4

R.T.: 6.252 min
 Delta R.T.: 0.017 min
 Response: 537296
 Conc: 5.21 ng/ml



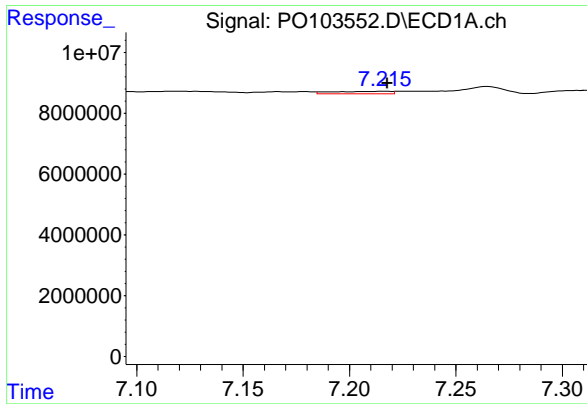
#30 AR-1254-5

R.T.: 7.747 min
 Delta R.T.: -0.009 min
 Response: 235964
 Conc: 0.89 ng/ml



#30 AR-1254-5

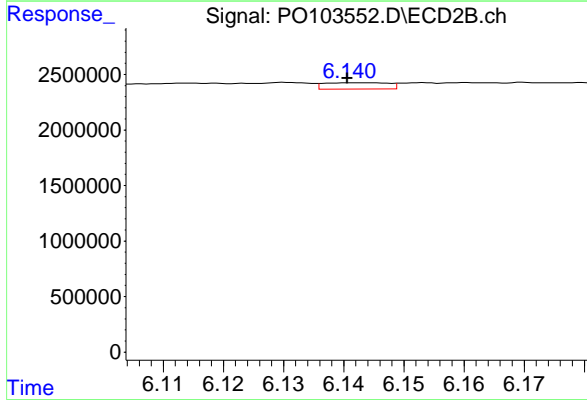
R.T.: 6.661 min
 Delta R.T.: 0.010 min
 Response: 468822
 Conc: 3.40 ng/ml



#31 AR-1260-1

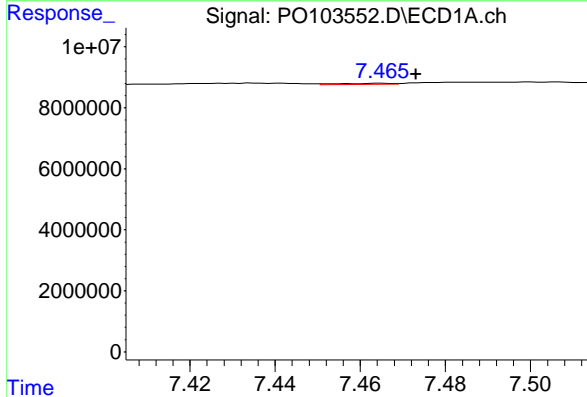
R.T.: 7.216 min
 Delta R.T.: -0.001 min
 Response: 1503021
 Conc: 5.75 ng/ml

Instrument :
 ECD_O
 ClientSampleId :
 I.BLK



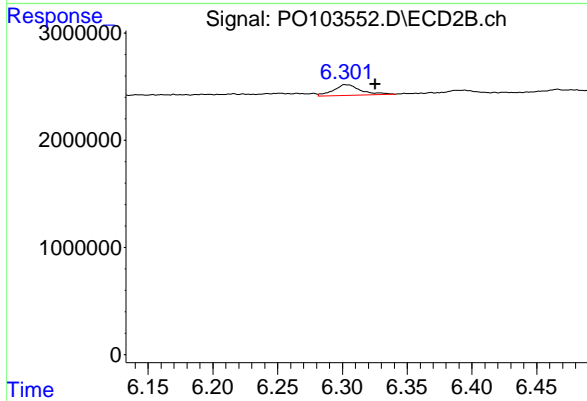
#31 AR-1260-1

R.T.: 6.141 min
 Delta R.T.: 0.000 min
 Response: 416295
 Conc: 3.94 ng/ml



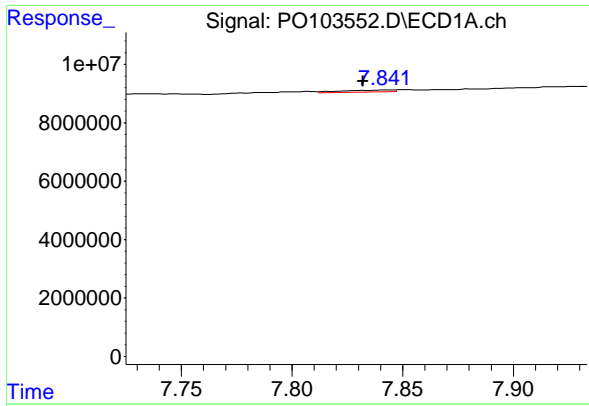
#32 AR-1260-2

R.T.: 7.466 min
 Delta R.T.: -0.008 min
 Response: 330412
 Conc: 1.01 ng/ml



#32 AR-1260-2

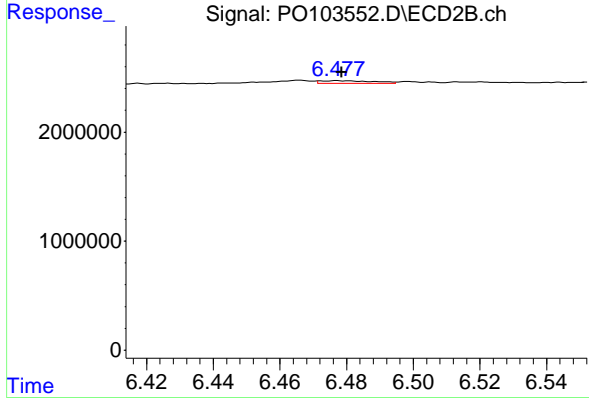
R.T.: 6.303 min
 Delta R.T.: -0.023 min
 Response: 1457697
 Conc: 11.65 ng/ml



#33 AR-1260-3

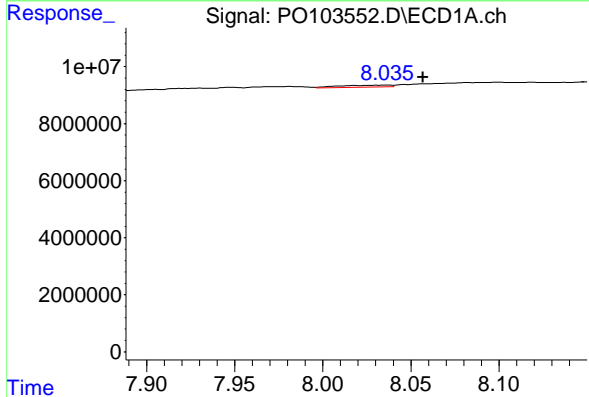
R.T.: 7.842 min
 Delta R.T.: 0.010 min
 Response: 1034653
 Conc: 4.17 ng/ml

Instrument :
 ECD_O
 ClientSampleId :
 I.BLK



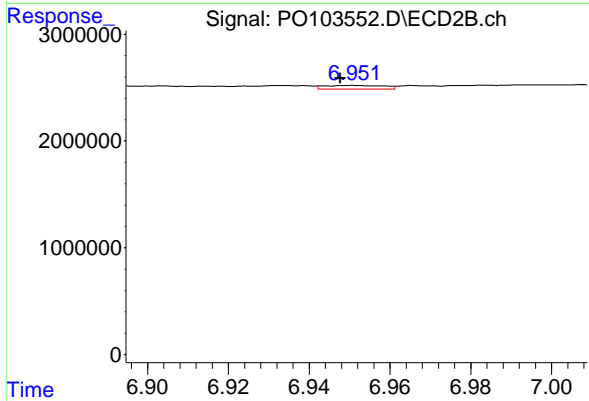
#33 AR-1260-3

R.T.: 6.477 min
 Delta R.T.: -0.002 min
 Response: 265528
 Conc: 2.25 ng/ml



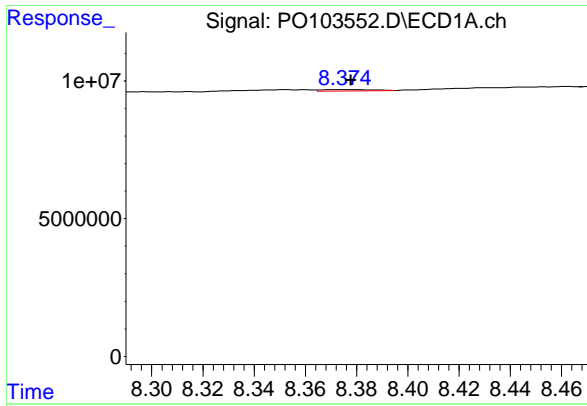
#34 AR-1260-4

R.T.: 8.036 min
 Delta R.T.: -0.021 min
 Response: 1469012
 Conc: 6.03 ng/ml



#34 AR-1260-4

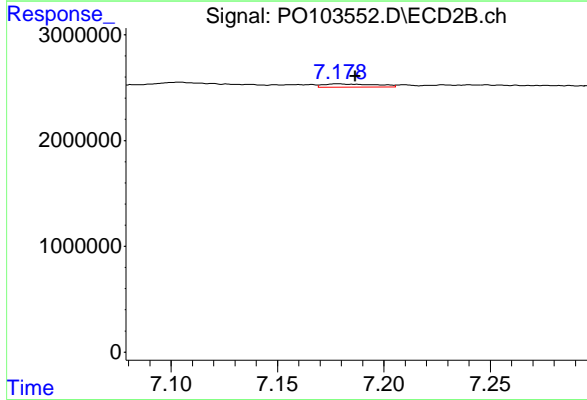
R.T.: 6.951 min
 Delta R.T.: 0.003 min
 Response: 350480
 Conc: 3.93 ng/ml



#35 AR-1260-5

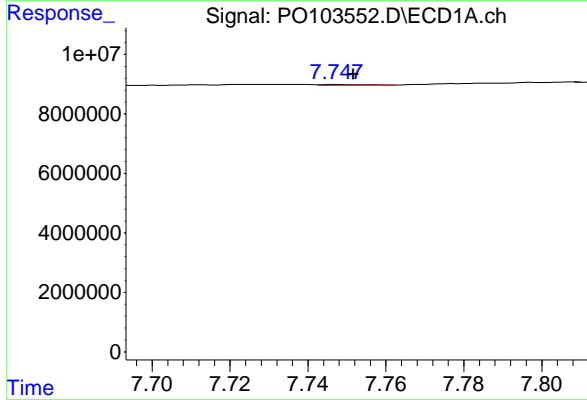
R.T.: 8.374 min
 Delta R.T.: -0.004 min
 Response: 622650
 Conc: 1.15 ng/ml

Instrument :
 ECD_O
 ClientSampleId :
 I.BLK



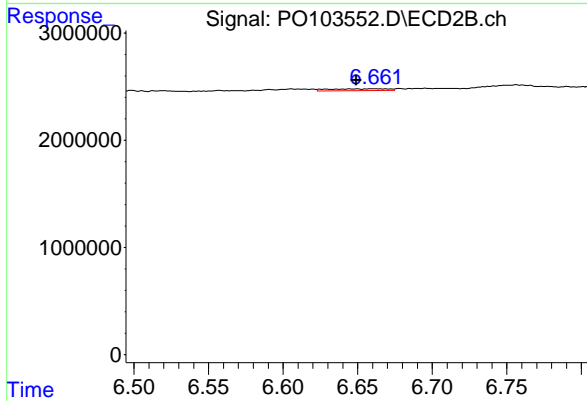
#35 AR-1260-5

R.T.: 7.178 min
 Delta R.T.: -0.008 min
 Response: 511709
 Conc: 2.47 ng/ml



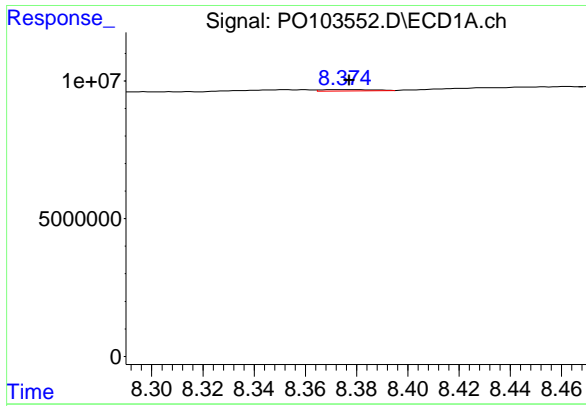
#36 AR-1262-1

R.T.: 7.747 min
 Delta R.T.: -0.004 min
 Response: 235964
 Conc: 1.02 ng/ml



#36 AR-1262-1

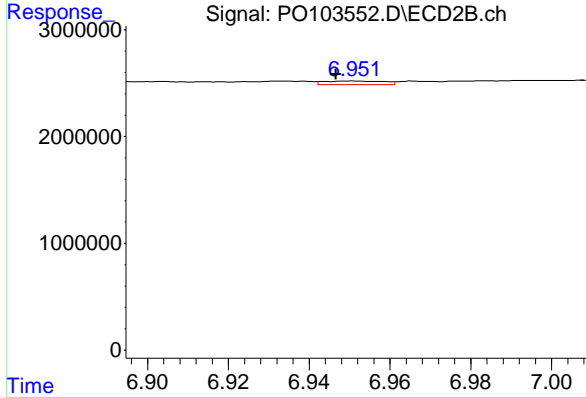
R.T.: 6.661 min
 Delta R.T.: 0.012 min
 Response: 468822
 Conc: 6.11 ng/ml



#37 AR-1262-2

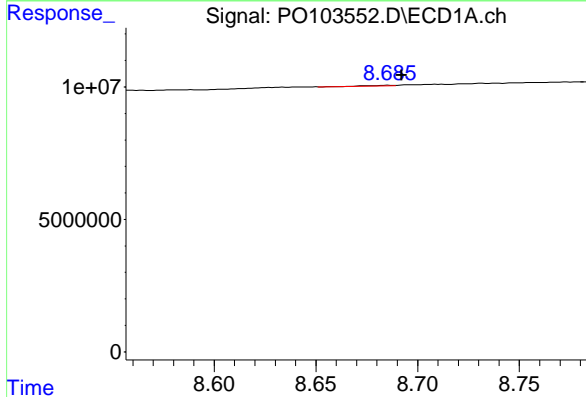
R.T.: 8.374 min
 Delta R.T.: -0.003 min
 Response: 622650
 Conc: 0.96 ng/ml

Instrument :
 ECD_O
 ClientSampleId :
 I.BLK



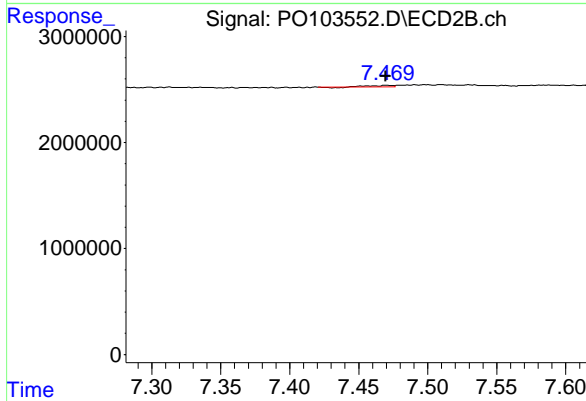
#37 AR-1262-2

R.T.: 6.951 min
 Delta R.T.: 0.004 min
 Response: 350480
 Conc: 2.97 ng/ml



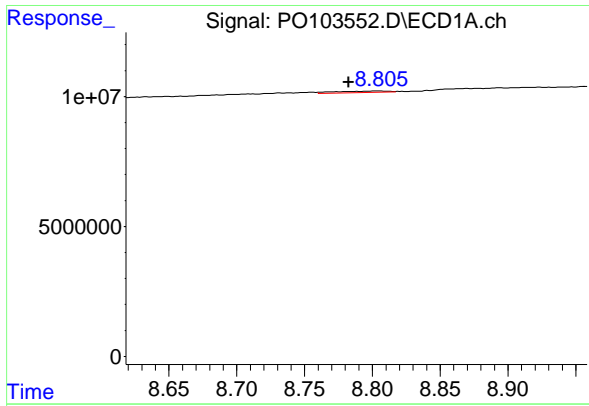
#38 AR-1262-3

R.T.: 8.686 min
 Delta R.T.: -0.007 min
 Response: 164648
 Conc: 0.38 ng/ml



#38 AR-1262-3

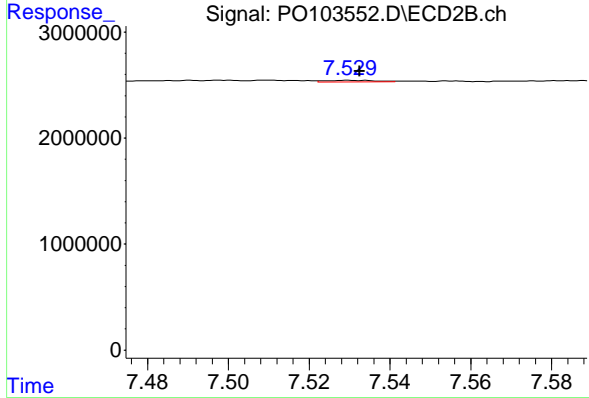
R.T.: 7.470 min
 Delta R.T.: 0.000 min
 Response: 140815
 Conc: 1.56 ng/ml



#39 AR-1262-4

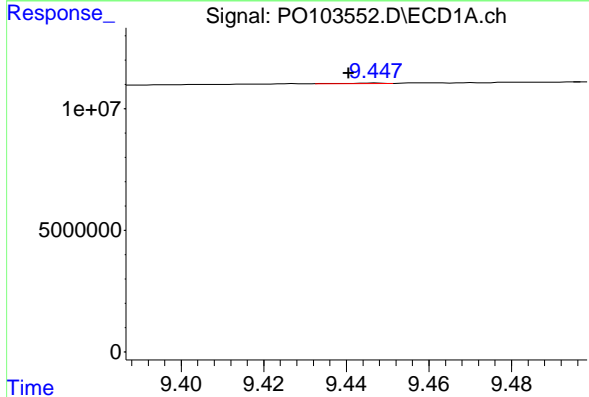
R.T.: 8.805 min
 Delta R.T.: 0.022 min
 Response: 1513639
 Conc: 4.50 ng/ml

Instrument :
 ECD_O
 ClientSampleId :
 I.BLK



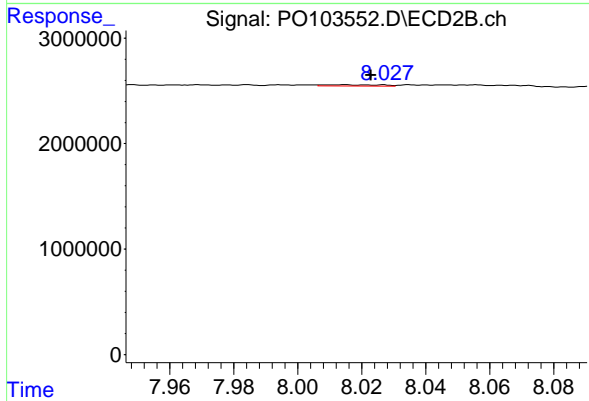
#39 AR-1262-4

R.T.: 7.530 min
 Delta R.T.: -0.003 min
 Response: 129386
 Conc: 0.77 ng/ml



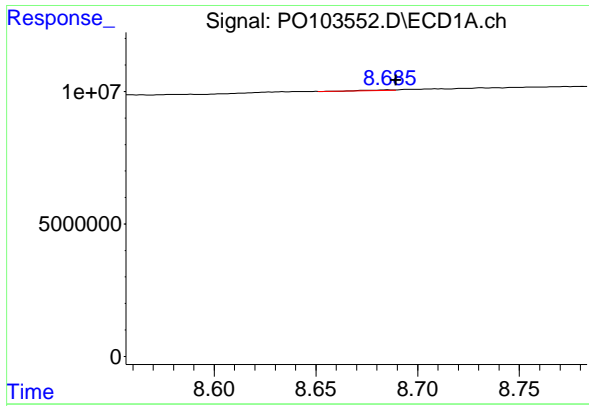
#40 AR-1262-5

R.T.: 9.447 min
 Delta R.T.: 0.007 min
 Response: 96290
 Conc: 0.41 ng/ml



#40 AR-1262-5

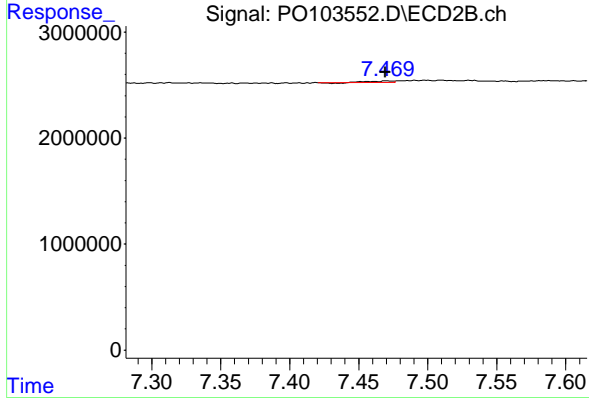
R.T.: 8.015 min
 Delta R.T.: -0.008 min
 Response: 134725
 Conc: 1.87 ng/ml



#41 AR-1268-1

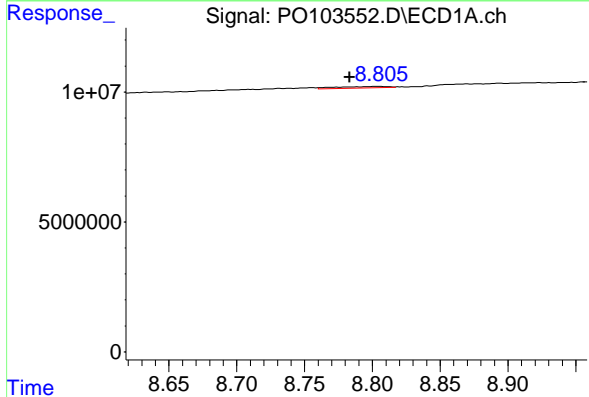
R.T.: 8.686 min
 Delta R.T.: -0.004 min
 Response: 164648
 Conc: 0.21 ng/ml

Instrument :
 ECD_O
 ClientSampleId :
 I.BLK



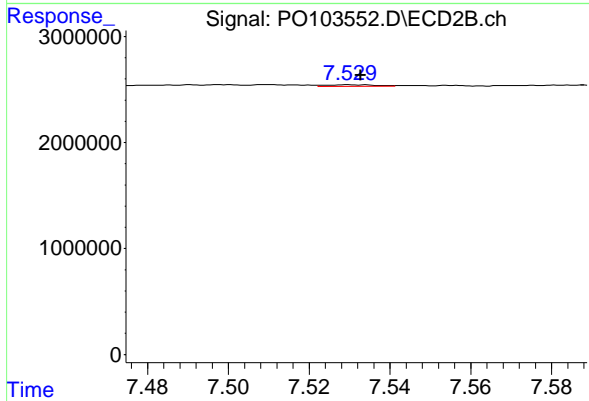
#41 AR-1268-1

R.T.: 7.470 min
 Delta R.T.: 0.000 min
 Response: 140815
 Conc: 0.55 ng/ml



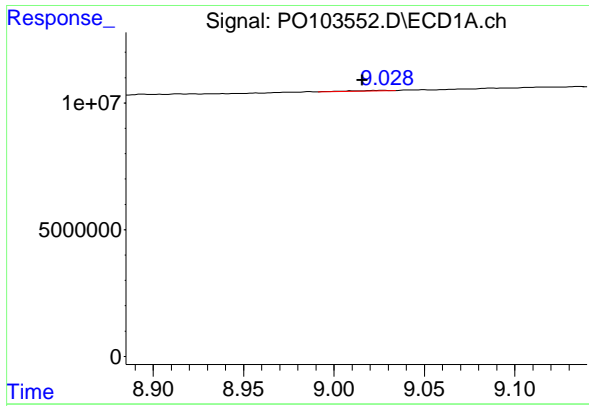
#42 AR-1268-2

R.T.: 8.805 min
 Delta R.T.: 0.022 min
 Response: 1513639
 Conc: 2.12 ng/ml



#42 AR-1268-2

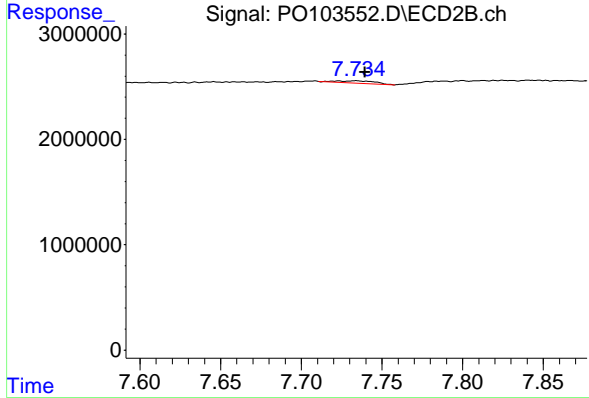
R.T.: 7.530 min
 Delta R.T.: -0.003 min
 Response: 129386
 Conc: 0.52 ng/ml



#43 AR-1268-3

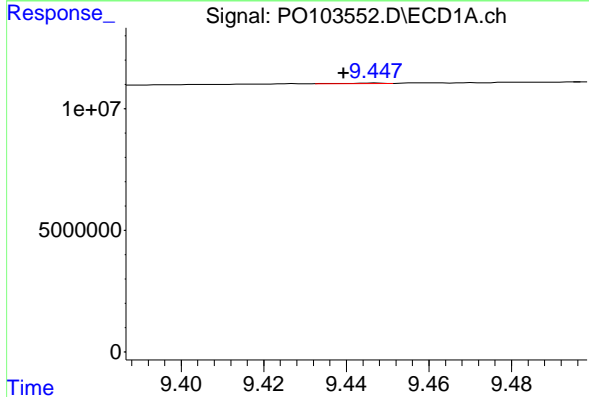
R.T.: 9.028 min
 Delta R.T.: 0.012 min
 Response: 369603
 Conc: 0.59 ng/ml

Instrument :
 ECD_O
 ClientSampleId :
 I.BLK



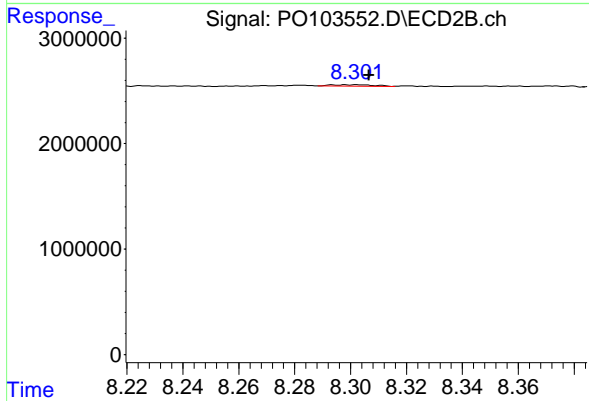
#43 AR-1268-3

R.T.: 7.734 min
 Delta R.T.: -0.006 min
 Response: 345931
 Conc: 1.72 ng/ml



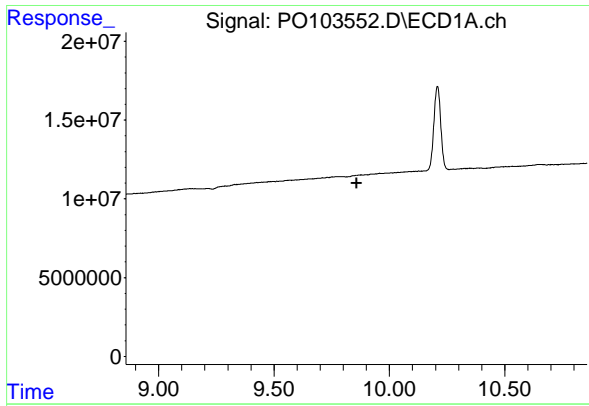
#44 AR-1268-4

R.T.: 9.447 min
 Delta R.T.: 0.008 min
 Response: 96290
 Conc: 0.38 ng/ml



#44 AR-1268-4

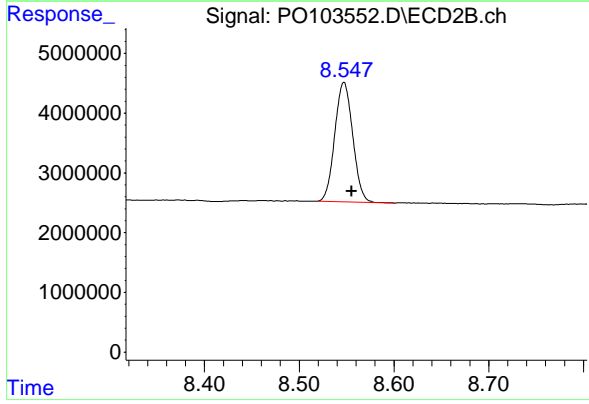
R.T.: 8.294 min
 Delta R.T.: -0.013 min
 Response: 140357
 Conc: 0.26 ng/ml



#45 AR-1268-5

R.T.: 9.844 min
Delta R.T.: -0.014 min
Response: -494375
Conc: N.D.

Instrument :
ECD_O
ClientSampleId :
I.BLK



#45 AR-1268-5

R.T.: 8.547 min
Delta R.T.: -0.008 min
Response: 26293878
Conc: 112.97 ng/ml