

Data Path : Z:\pestpcbsrv\HPCHEM1\ECD_0\Data\P0050924\
 Data File : P0103541.D
 Signal(s) : Signal #1: ECD1A.ch Signal #2: ECD2B.ch
 Acq On : 09 May 2024 19:56
 Operator : YP/AJ
 Sample : AR1242CCC500
 Misc :
 ALS Vial : 4 Sample Multiplier: 1

Instrument :
 ECD_0
ClientSampleId :
 AR1242CCC500

Integration File signal 1: autoint1.e
 Integration File signal 2: autoint2.e
 Quant Time: May 10 01:12:03 2024
 Quant Method : Z:\pestpcbsrv\HPCHEM1\ECD_0\methods\P0050624.M
 Quant Title : GC EXTRACTABLES
 QLast Update : Tue May 07 04:55:35 2024
 Response via : Initial Calibration
 Integrator: ChemStation

Volume Inj. : 2 µl
 Signal #1 Phase : ZB-MR1 Signal #2 Phase: ZB-MR2
 Signal #1 Info : 30Mx0.32mmx 0.50µ Signal #2 Info : 30M x 0.32mm x 0.25µm

Compound	RT#1	RT#2	Resp#1	Resp#2	ng/ml	ng/ml

System Monitoring Compounds						
1) SA Tetrachlo...	4.453	3.589	382.1E6	133.2E6	49.650	52.889
2) SA Decachlor...	10.211	8.551	256.3E6	60098083	54.068	46.198
Target Compounds						
16) L4 AR-1242-1	5.622	4.667	100.6E6	33967010	491.391	513.806
17) L4 AR-1242-2	5.645	4.686	143.3E6	51760646	491.962	519.988
18) L4 AR-1242-3	5.707	4.859	85352494	28280923	492.415	516.725
19) L4 AR-1242-4	5.805	4.943	70829322	25528439	493.101	513.911
20) L4 AR-1242-5	6.539	5.460	70906234	31135969	495.201	509.310

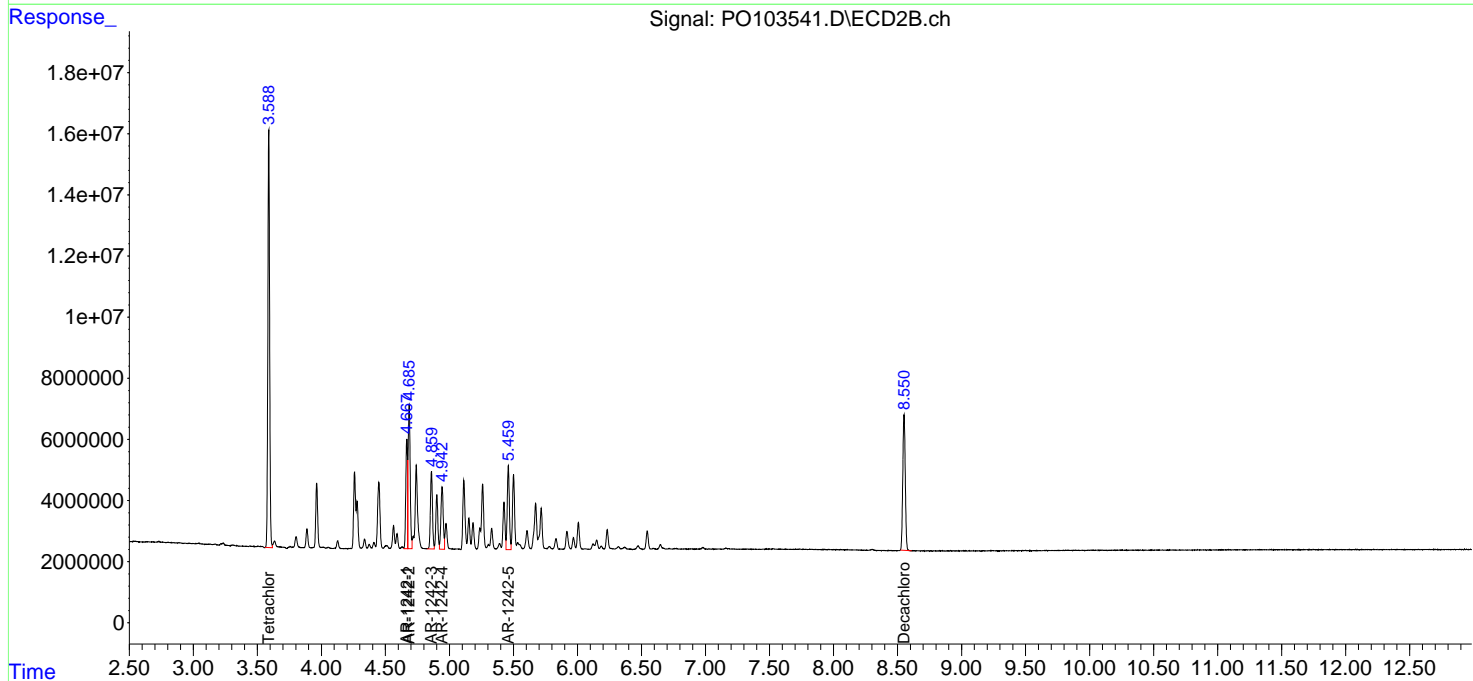
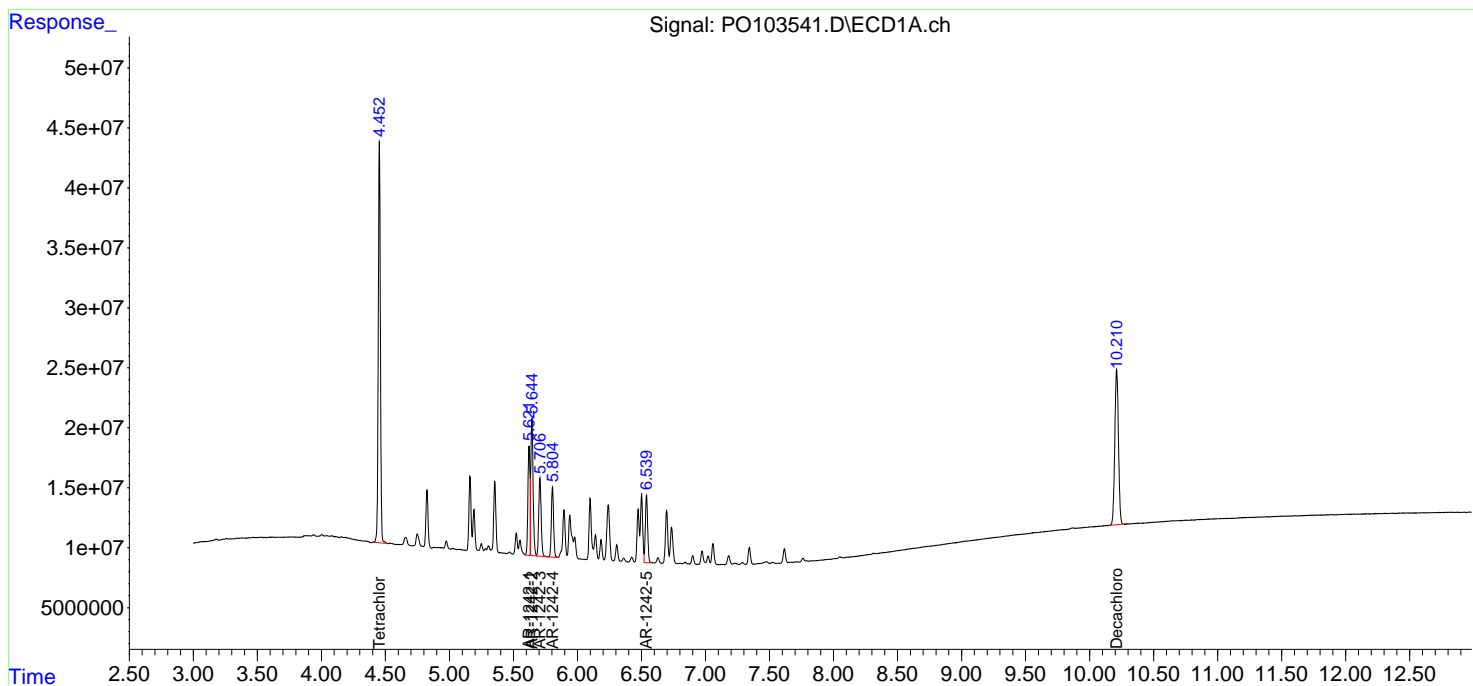
(f)=RT Delta > 1/2 Window (#)=Amounts differ by > 25% (m)=manual int.

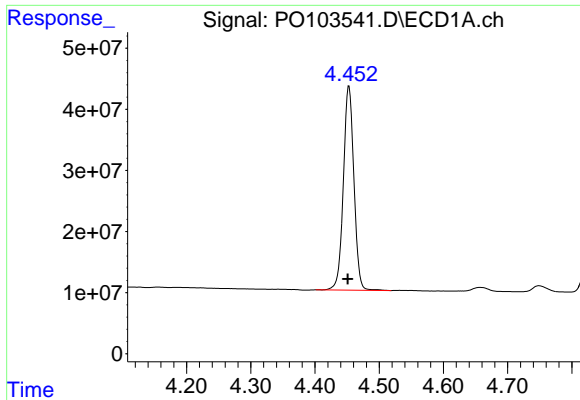
Data Path : Z:\pestpcbsrv\HPCHEM1\ECD_O\Data\PO050924\
Data File : PO103541.D
Signal(s) : Signal #1: ECD1A.ch Signal #2: ECD2B.ch
Acq On : 09 May 2024 19:56
Operator : YP/AJ
Sample : AR1242CCC500
Misc :
ALS Vial : 4 Sample Multiplier: 1

Instrument :
ECD_O
ClientSampleId :
AR1242CCC500

Integration File signal 1: autoint1.e
Integration File signal 2: autoint2.e
Quant Time: May 10 01:12:03 2024
Quant Method : Z:\pestpcbsrv\HPCHEM1\ECD_O\methods\PO050624.M
Quant Title : GC EXTRACTABLES
QLast Update : Tue May 07 04:55:35 2024
Response via : Initial Calibration
Integrator: ChemStation

Volume Inj. : 2 µl
Signal #1 Phase : ZB-MR1 Signal #2 Phase: ZB-MR2
Signal #1 Info : 30Mx0.32mmx 0.50µ Signal #2 Info : 30M x 0.32mm x 0.25µm

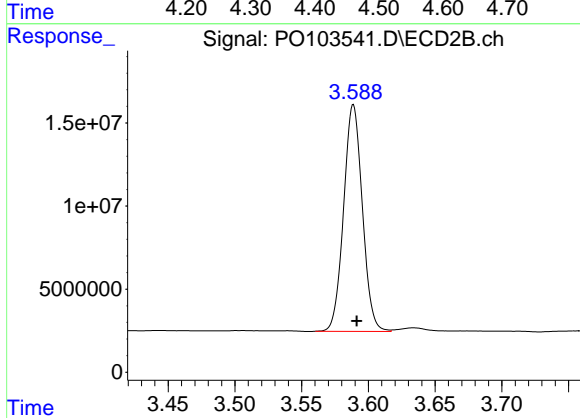




#1 Tetrachloro-m-xylene

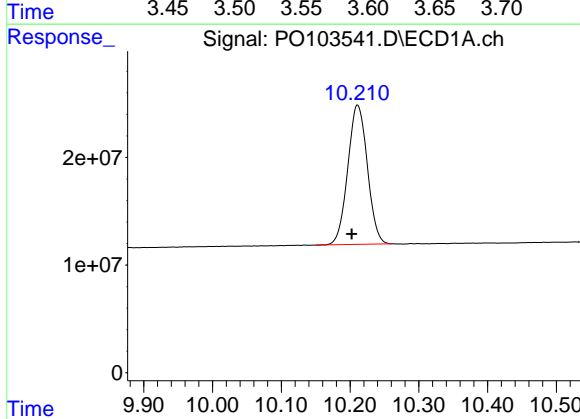
R.T.: 4.453 min
 Delta R.T.: 0.002 min
 Response: 382090977
 Conc: 49.65 ng/ml

Instrument :
 ECD_O
 ClientSampleId :
 AR1242CCC500



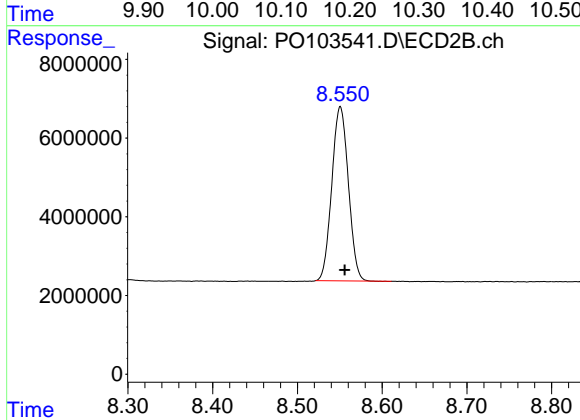
#1 Tetrachloro-m-xylene

R.T.: 3.589 min
 Delta R.T.: -0.002 min
 Response: 133237486
 Conc: 52.89 ng/ml



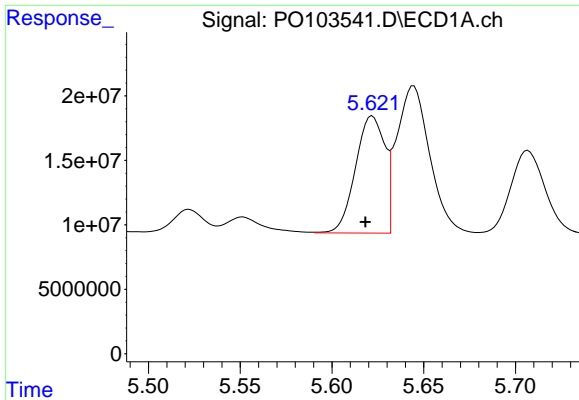
#2 Decachlorobiphenyl

R.T.: 10.211 min
 Delta R.T.: 0.009 min
 Response: 256296465
 Conc: 54.07 ng/ml



#2 Decachlorobiphenyl

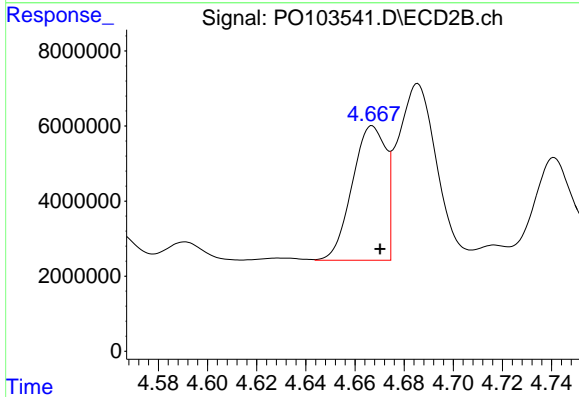
R.T.: 8.551 min
 Delta R.T.: -0.005 min
 Response: 60098083
 Conc: 46.20 ng/ml



#16 AR-1242-1

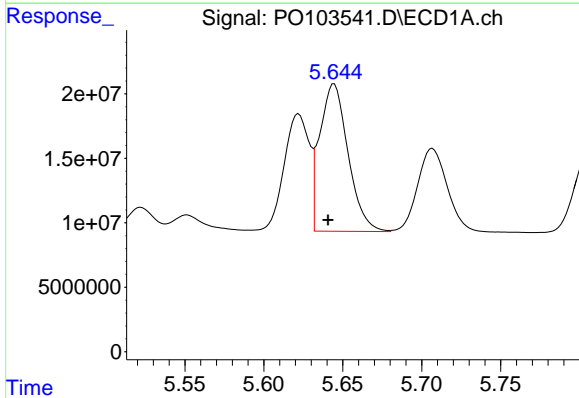
R.T.: 5.622 min
 Delta R.T.: 0.004 min
 Response: 100551671
 Conc: 491.39 ng/ml

Instrument :
 ECD_O
 ClientSampleId :
 AR1242CCC500



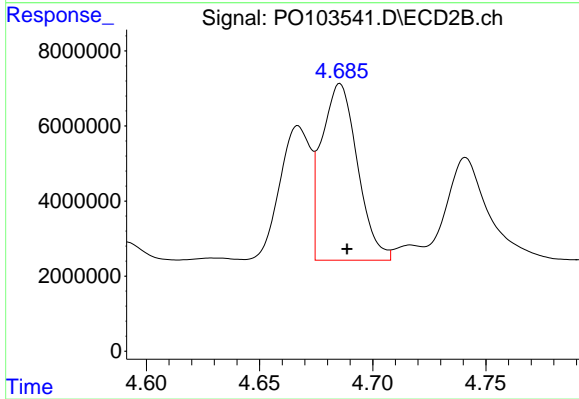
#16 AR-1242-1

R.T.: 4.667 min
 Delta R.T.: -0.003 min
 Response: 33967010
 Conc: 513.81 ng/ml



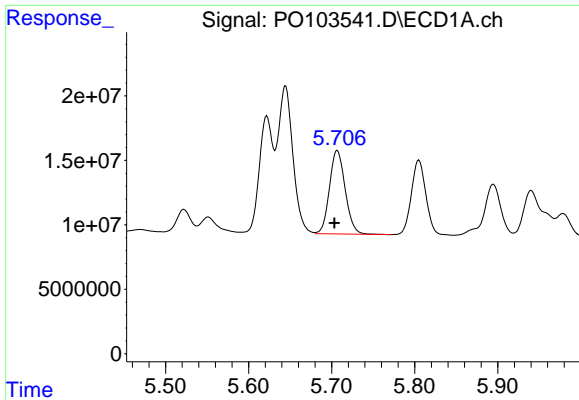
#17 AR-1242-2

R.T.: 5.645 min
 Delta R.T.: 0.004 min
 Response: 143309496
 Conc: 491.96 ng/ml



#17 AR-1242-2

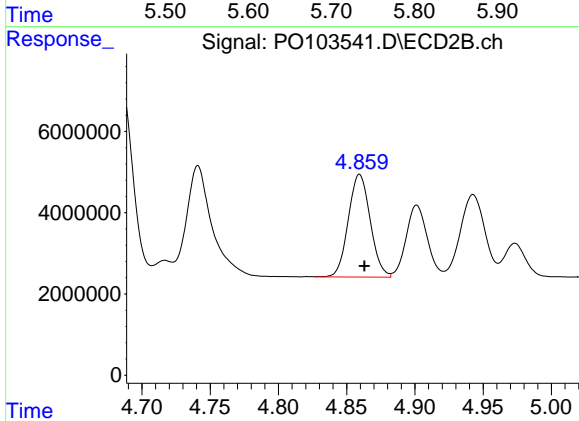
R.T.: 4.686 min
 Delta R.T.: -0.003 min
 Response: 51760646
 Conc: 519.99 ng/ml



#18 AR-1242-3

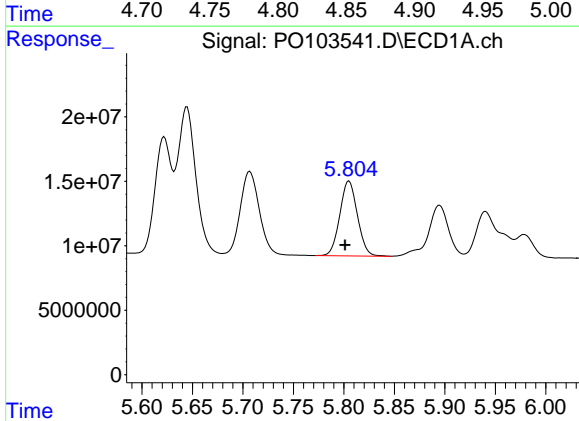
R.T.: 5.707 min
 Delta R.T.: 0.004 min
 Response: 85352494
 Conc: 492.41 ng/ml

Instrument :
 ECD_O
 ClientSampleId :
 AR1242CCC500



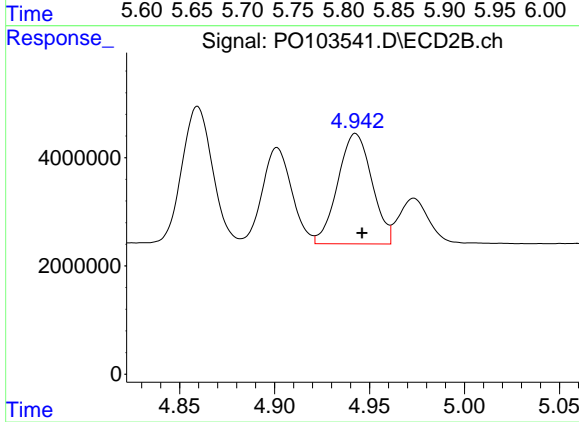
#18 AR-1242-3

R.T.: 4.859 min
 Delta R.T.: -0.004 min
 Response: 28280923
 Conc: 516.73 ng/ml



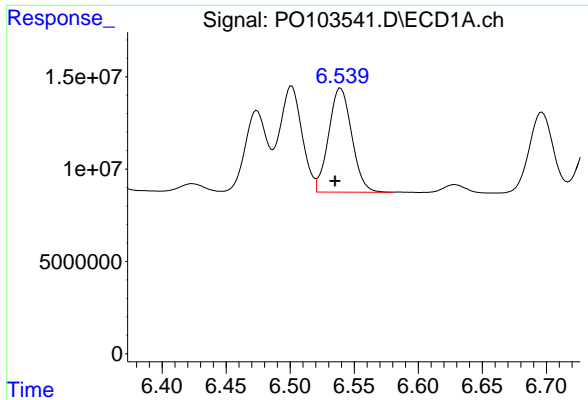
#19 AR-1242-4

R.T.: 5.805 min
 Delta R.T.: 0.004 min
 Response: 70829322
 Conc: 493.10 ng/ml



#19 AR-1242-4

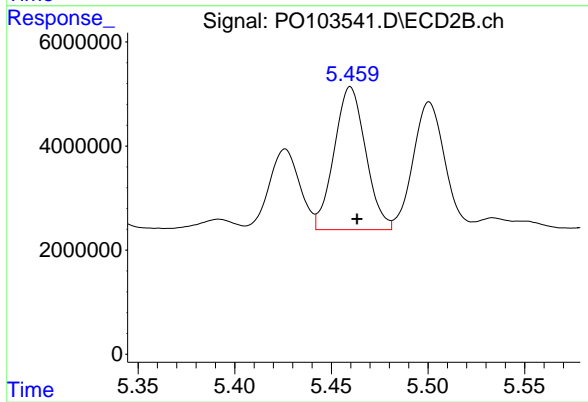
R.T.: 4.943 min
 Delta R.T.: -0.003 min
 Response: 25528439
 Conc: 513.91 ng/ml



#20 AR-1242-5

R.T.: 6.539 min
Delta R.T.: 0.004 min
Response: 70906234
Conc: 495.20 ng/ml

Instrument :
ECD_O
ClientSampleId :
AR1242CCC500



#20 AR-1242-5

R.T.: 5.460 min
Delta R.T.: -0.003 min
Response: 31135969
Conc: 509.31 ng/ml