

Data Path : Z:\pestpcbsrv\HPCHEM1\ECD_O\Data\P0051023\
 Data File : P0094910.D
 Signal(s) : Signal #1: ECD1A.ch Signal #2: ECD2B.ch
 Acq On : 10 May 2023 10:34
 Operator : YP/AJ
 Sample : AR1254CCC500
 Misc :
 ALS Vial : 6 Sample Multiplier: 1

Instrument :
 ECD_O
ClientSampleId :
 AR1254CCC500

Integration File signal 1: autoint1.e
 Integration File signal 2: autoint2.e
 Quant Time: May 10 21:09:03 2023
 Quant Method : Z:\pestpcbsrv\HPCHEM1\ECD_O\methods\P0042623.M
 Quant Title : GC EXTRACTABLES
 QLast Update : Mon May 01 11:12:50 2023
 Response via : Initial Calibration
 Integrator: ChemStation

Volume Inj. : 2 µl
 Signal #1 Phase : ZB-MR1 Signal #2 Phase: ZB-MR2
 Signal #1 Info : 30Mx0.32mmx 0.50µ Signal #2 Info : 30M x 0.32mm x 0.25µm

Compound	RT#1	RT#2	Resp#1	Resp#2	ng/ml	ng/ml

System Monitoring Compounds						
1) SA Tetrachlo...	4.414	3.615	174.0E6	68953711	50.515	51.533
2) SA Decachlor...	10.254	8.625	129.7E6	58610463	53.458	52.071
Target Compounds						
26) L6 AR-1254-1	6.456	5.496	58178905	37238586	459.193	513.700
27) L6 AR-1254-2	6.677	5.645	89117466	33082797	466.256	507.023
28) L6 AR-1254-3	7.048	6.048	85238403	49619040	451.915	499.689
29) L6 AR-1254-4	7.337	6.278	51596393	25318600	455.559	512.947
30) L6 AR-1254-5	7.761	6.696	67472353	42302720	481.783	502.817

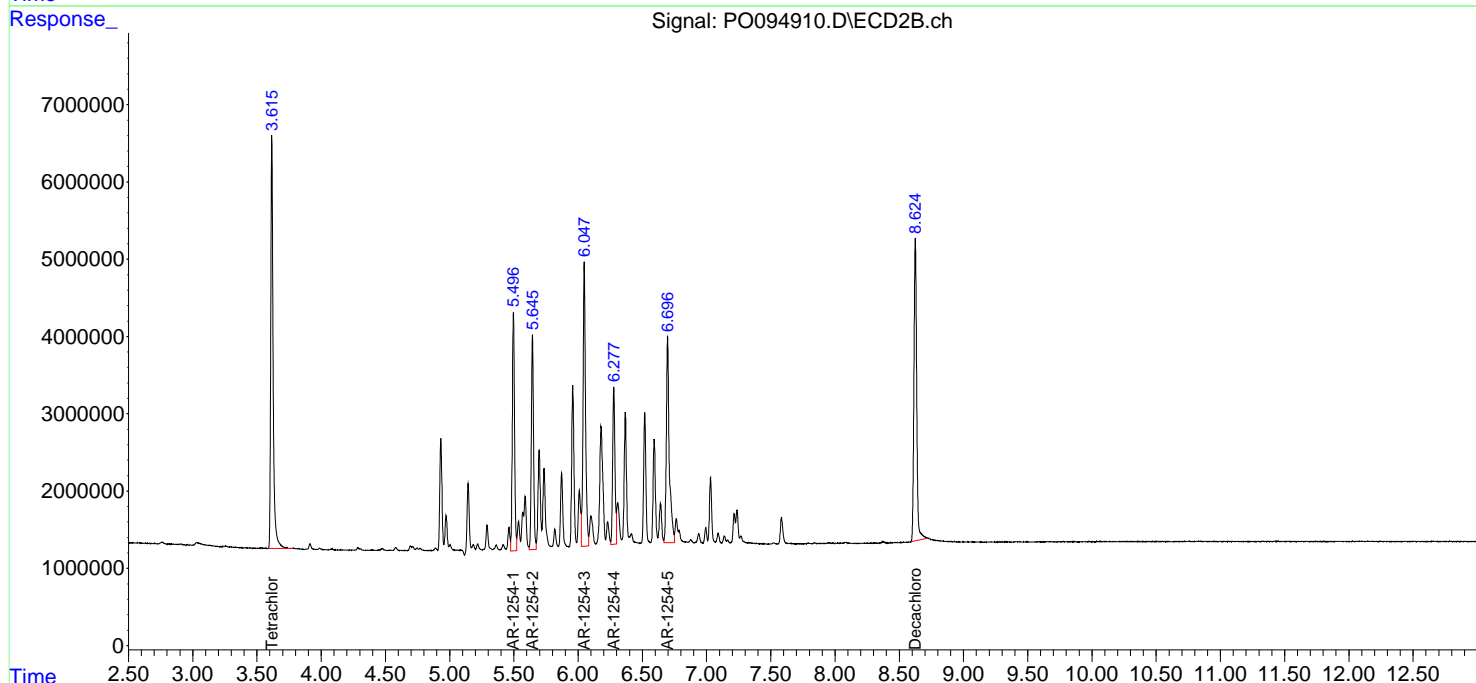
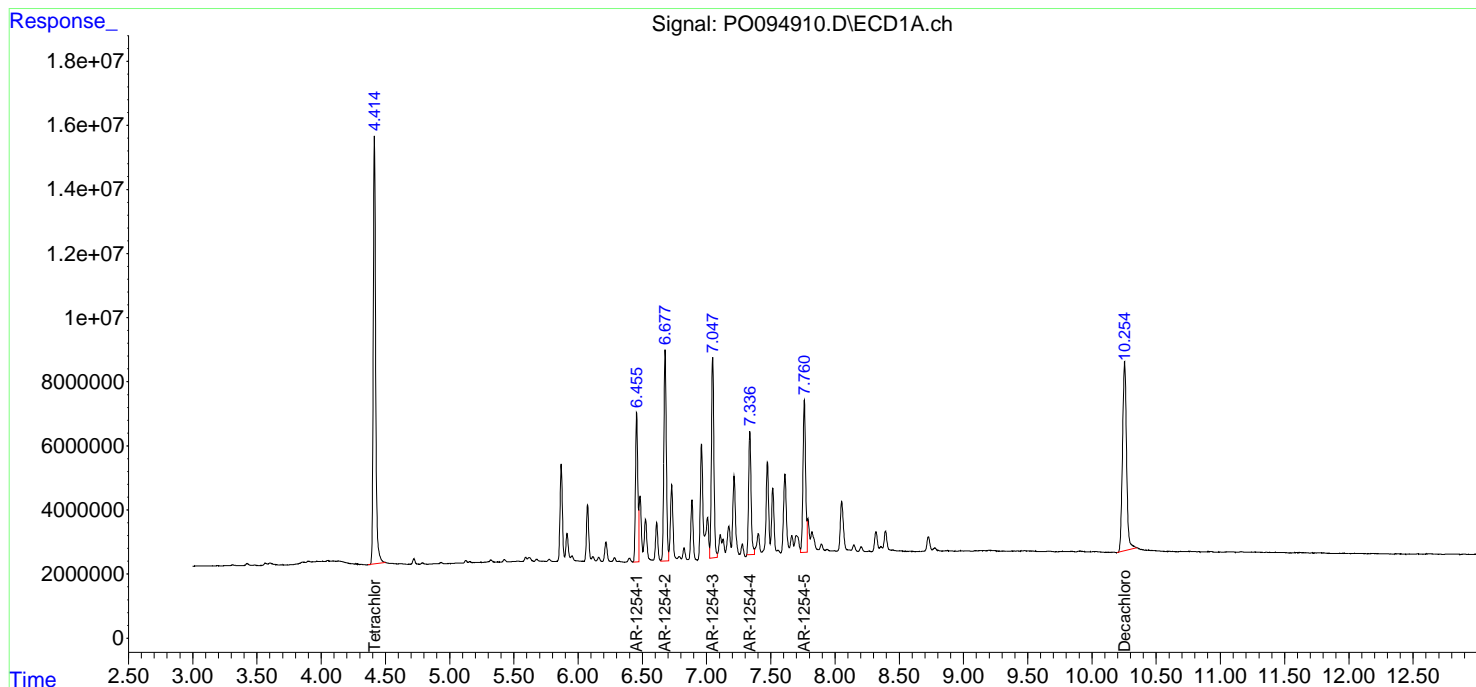
(f)=RT Delta > 1/2 Window (#)=Amounts differ by > 25% (m)=manual int.

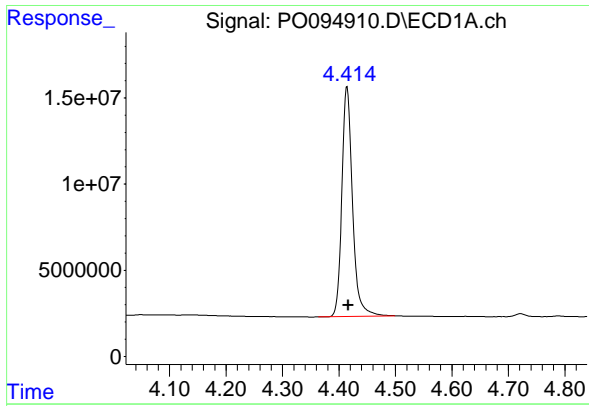
Data Path : Z:\pestpcbsrv\HPCHEM1\ECD_O\Data\PO051023\
 Data File : PO094910.D
 Signal(s) : Signal #1: ECD1A.ch Signal #2: ECD2B.ch
 Acq On : 10 May 2023 10:34
 Operator : YP/AJ
 Sample : AR1254CCC500
 Misc :
 ALS Vial : 6 Sample Multiplier: 1

Instrument :
 ECD_O
 ClientSampleId :
 AR1254CCC500

Integration File signal 1: autoint1.e
 Integration File signal 2: autoint2.e
 Quant Time: May 10 21:09:03 2023
 Quant Method : Z:\pestpcbsrv\HPCHEM1\ECD_O\methods\PO042623.M
 Quant Title : GC EXTRACTABLES
 QLast Update : Mon May 01 11:12:50 2023
 Response via : Initial Calibration
 Integrator: ChemStation

Volume Inj. : 2 µl
 Signal #1 Phase : ZB-MR1 Signal #2 Phase: ZB-MR2
 Signal #1 Info : 30Mx0.32mmx 0.50µ Signal #2 Info : 30M x 0.32mm x 0.25µm

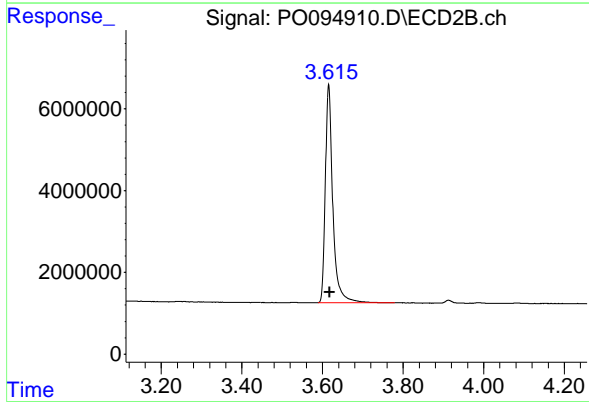




#1 Tetrachloro-m-xylene

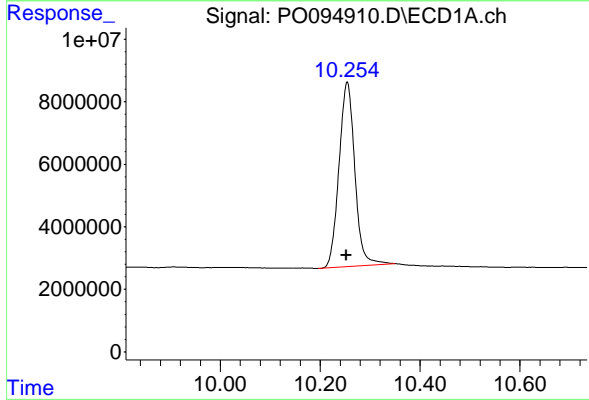
R.T.: 4.414 min
 Delta R.T.: -0.002 min
 Response: 174004736
 Conc: 50.52 ng/ml

Instrument :
 ECD_O
 ClientSampleId :
 AR1254CCC500



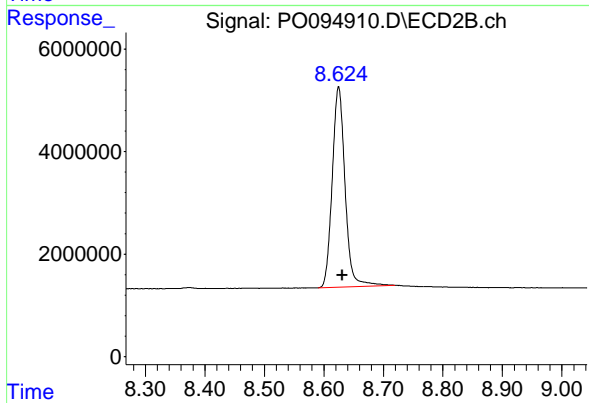
#1 Tetrachloro-m-xylene

R.T.: 3.615 min
 Delta R.T.: -0.003 min
 Response: 68953711
 Conc: 51.53 ng/ml



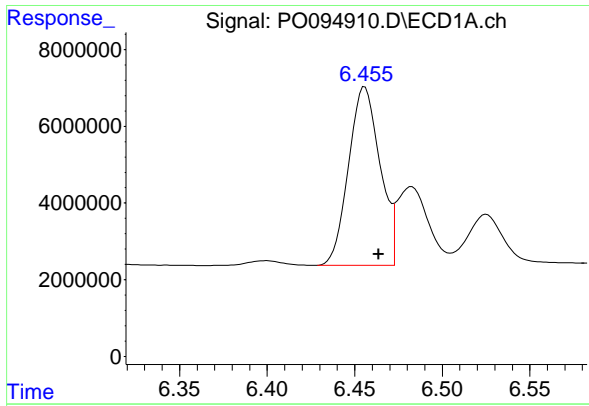
#2 Decachlorobiphenyl

R.T.: 10.254 min
 Delta R.T.: 0.002 min
 Response: 129735639
 Conc: 53.46 ng/ml



#2 Decachlorobiphenyl

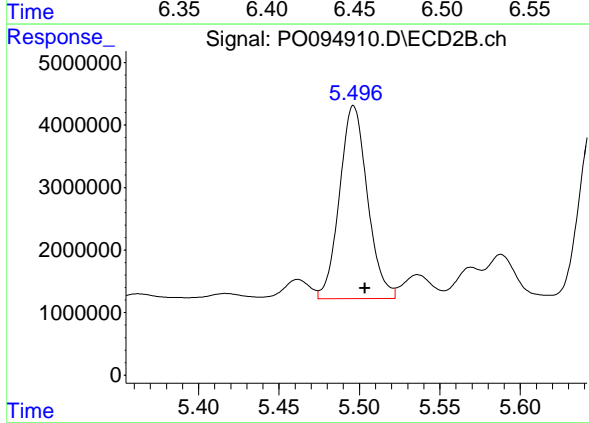
R.T.: 8.625 min
 Delta R.T.: -0.006 min
 Response: 58610463
 Conc: 52.07 ng/ml



#26 AR-1254-1

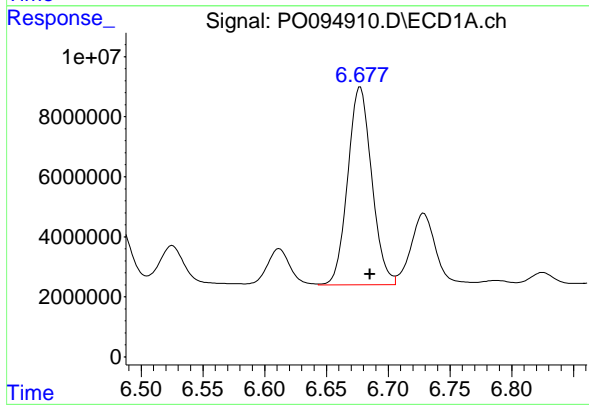
R.T.: 6.456 min
 Delta R.T.: -0.008 min
 Response: 58178905
 Conc: 459.19 ng/ml

Instrument :
 ECD_O
 ClientSampleId :
 AR1254CCC500



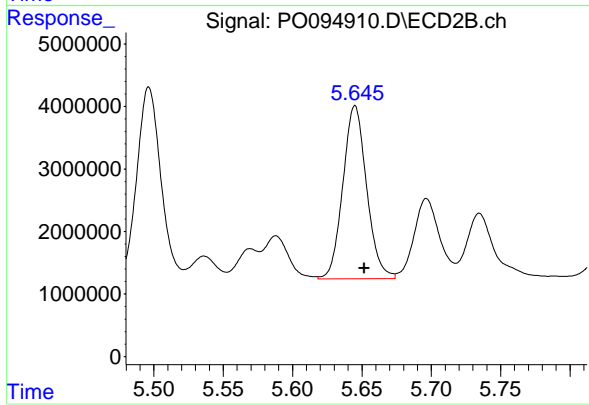
#26 AR-1254-1

R.T.: 5.496 min
 Delta R.T.: -0.007 min
 Response: 37238586
 Conc: 513.70 ng/ml



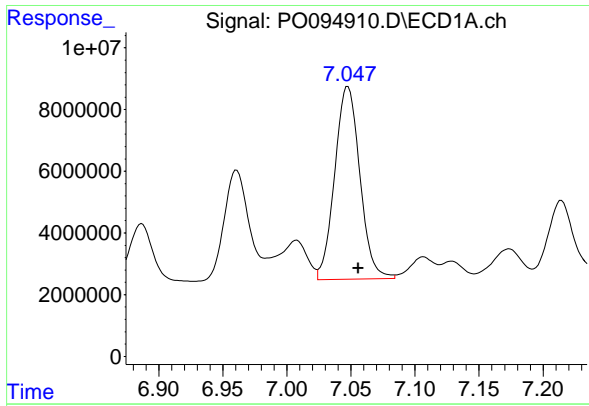
#27 AR-1254-2

R.T.: 6.677 min
 Delta R.T.: -0.008 min
 Response: 89117466
 Conc: 466.26 ng/ml



#27 AR-1254-2

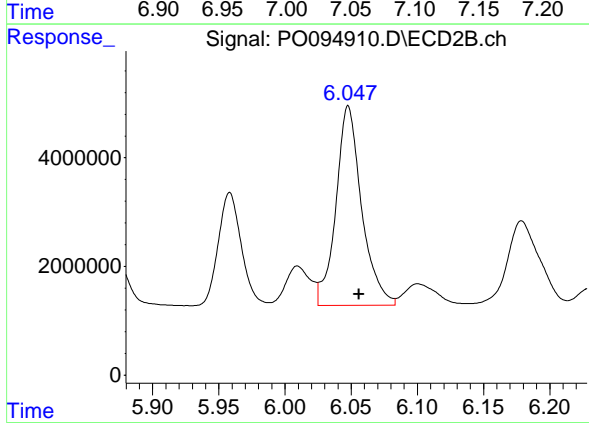
R.T.: 5.645 min
 Delta R.T.: -0.007 min
 Response: 33082797
 Conc: 507.02 ng/ml



#28 AR-1254-3

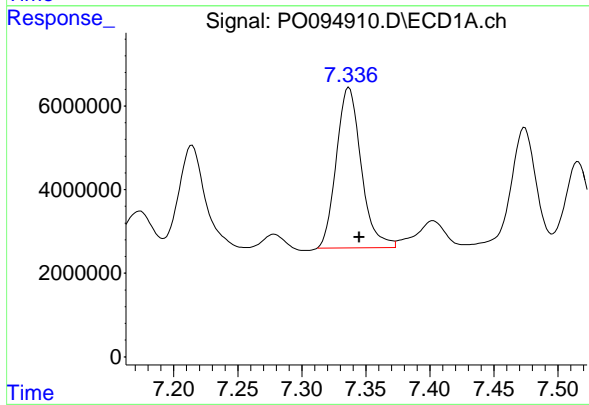
R.T.: 7.048 min
 Delta R.T.: -0.008 min
 Response: 85238403
 Conc: 451.91 ng/ml

Instrument :
 ECD_O
 ClientSampleId :
 AR1254CCC500



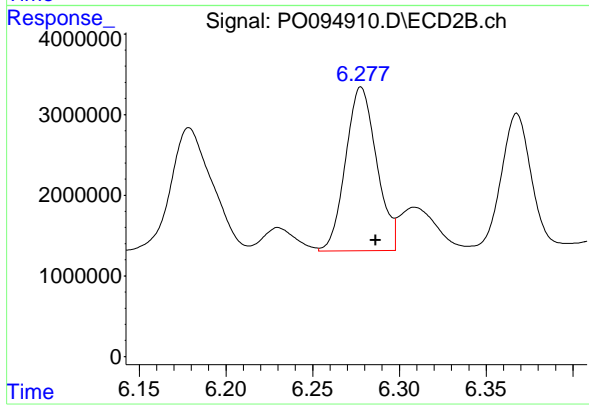
#28 AR-1254-3

R.T.: 6.048 min
 Delta R.T.: -0.008 min
 Response: 49619040
 Conc: 499.69 ng/ml



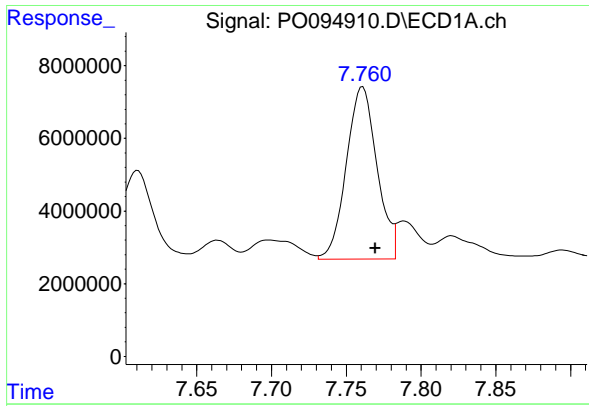
#29 AR-1254-4

R.T.: 7.337 min
 Delta R.T.: -0.008 min
 Response: 51596393
 Conc: 455.56 ng/ml



#29 AR-1254-4

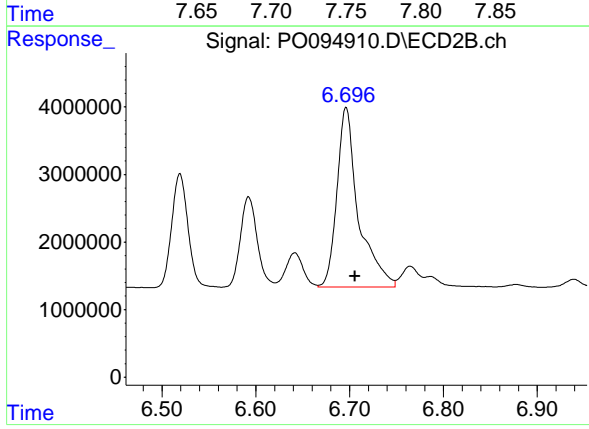
R.T.: 6.278 min
 Delta R.T.: -0.008 min
 Response: 25318600
 Conc: 512.95 ng/ml



#30 AR-1254-5

R.T.: 7.761 min
Delta R.T.: -0.008 min
Response: 67472353
Conc: 481.78 ng/ml

Instrument :
ECD_O
ClientSampleId :
AR1254CCC500



#30 AR-1254-5

R.T.: 6.696 min
Delta R.T.: -0.009 min
Response: 42302720
Conc: 502.82 ng/ml