

Data Path : Z:\pestpcbsrv\HPCHEM1\ECD_O\Data\P0051023\
 Data File : P0094924.D
 Signal(s) : Signal #1: ECD1A.ch Signal #2: ECD2B.ch
 Acq On : 10 May 2023 16:40
 Operator : YP/AJ
 Sample : I.BLK
 Misc :
 ALS Vial : 2 Sample Multiplier: 1

Instrument :
 ECD_O
 ClientSampleId :
 I.BLK

Integration File signal 1: autoint1.e
 Integration File signal 2: autoint2.e
 Quant Time: May 10 21:33:16 2023
 Quant Method : Z:\pestpcbsrv\HPCHEM1\ECD_O\methods\P0042623.M
 Quant Title : GC EXTRACTABLES
 QLast Update : Mon May 01 11:12:50 2023
 Response via : Initial Calibration
 Integrator: ChemStation

Volume Inj. : 2 µl
 Signal #1 Phase : ZB-MR1 Signal #2 Phase: ZB-MR2
 Signal #1 Info : 30Mx0.32mmx 0.50µ Signal #2 Info : 30M x 0.32mm x 0.25µm

Compound	RT#1	RT#2	Resp#1	Resp#2	ng/ml	ng/ml

System Monitoring Compounds						
1) SA Tetrachlo...	4.415	3.616	64654225	25739269	18.770	19.236
2) SA Decachlor...	10.251	8.626	51660187	24805648	21.287	22.038

Target Compounds

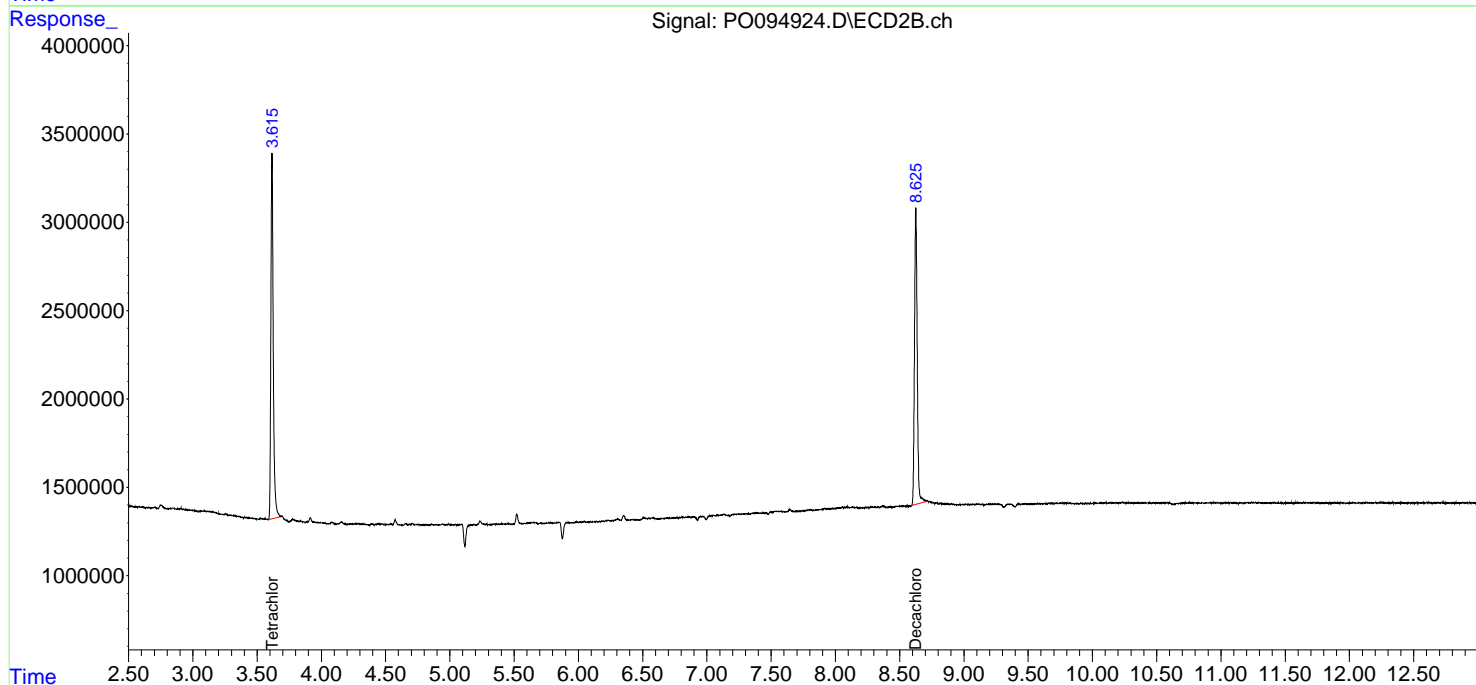
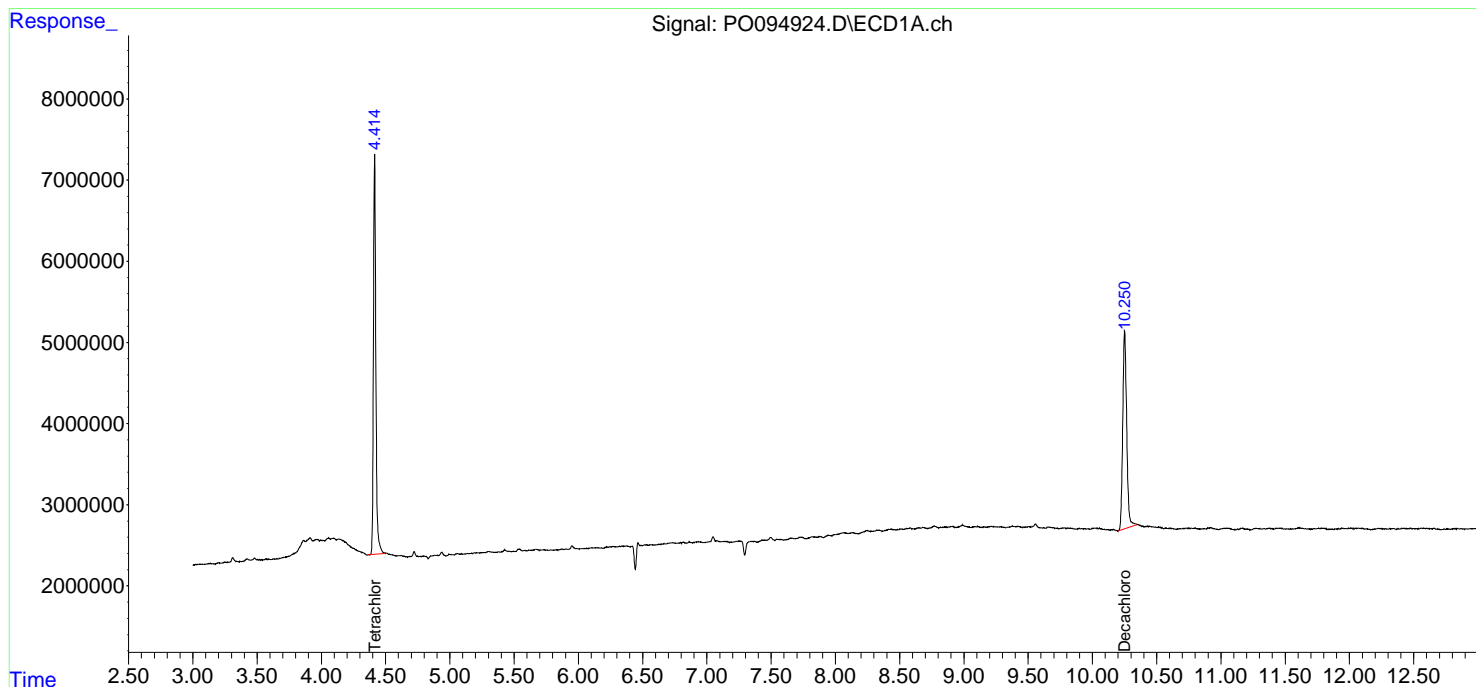
(f)=RT Delta > 1/2 Window (#)=Amounts differ by > 25% (m)=manual int.

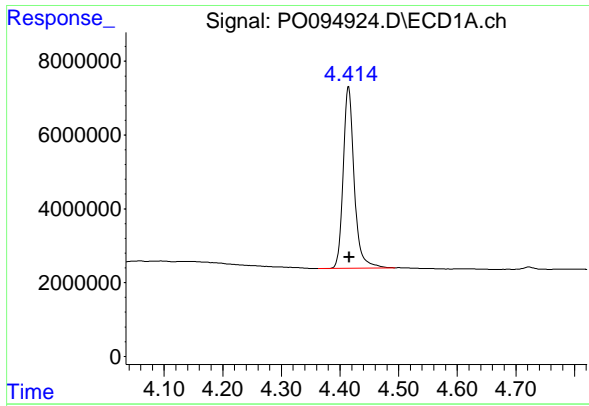
Data Path : Z:\pestpcbsrv\HPCHEM1\ECD_O\Data\PO051023\
Data File : PO094924.D
Signal(s) : Signal #1: ECD1A.ch Signal #2: ECD2B.ch
Acq On : 10 May 2023 16:40
Operator : YP/AJ
Sample : I.BLK
Misc :
ALS Vial : 2 Sample Multiplier: 1

Instrument :
ECD_O
ClientSampleId :
I.BLK

Integration File signal 1: autoint1.e
Integration File signal 2: autoint2.e
Quant Time: May 10 21:33:16 2023
Quant Method : Z:\pestpcbsrv\HPCHEM1\ECD_O\methods\PO042623.M
Quant Title : GC EXTRACTABLES
QLast Update : Mon May 01 11:12:50 2023
Response via : Initial Calibration
Integrator: ChemStation

Volume Inj. : 2 µl
Signal #1 Phase : ZB-MR1 Signal #2 Phase: ZB-MR2
Signal #1 Info : 30Mx0.32mmx 0.50µ Signal #2 Info : 30M x 0.32mm x 0.25µm

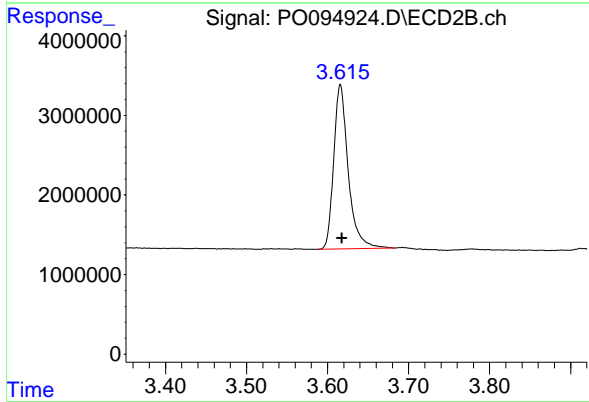




#1 Tetrachloro-m-xylene

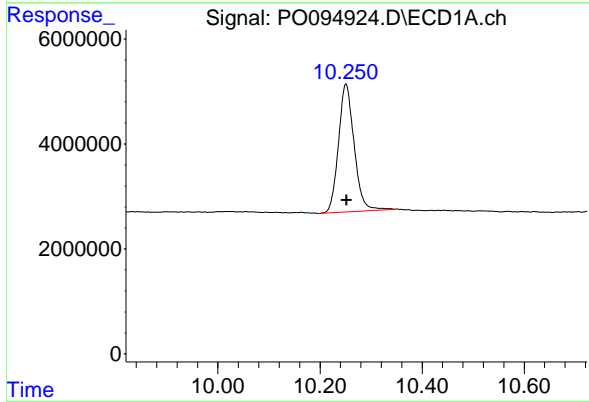
R.T.: 4.415 min
 Delta R.T.: -0.001 min
 Response: 64654225
 Conc: 18.77 ng/ml

Instrument :
 ECD_O
 ClientSampleId :
 I.BLK



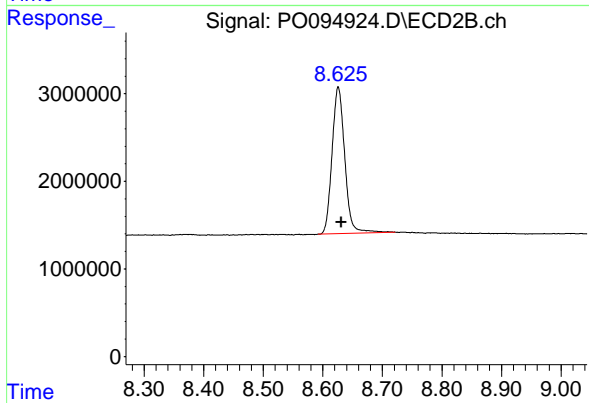
#1 Tetrachloro-m-xylene

R.T.: 3.616 min
 Delta R.T.: -0.002 min
 Response: 25739269
 Conc: 19.24 ng/ml



#2 Decachlorobiphenyl

R.T.: 10.251 min
 Delta R.T.: -0.001 min
 Response: 51660187
 Conc: 21.29 ng/ml



#2 Decachlorobiphenyl

R.T.: 8.626 min
 Delta R.T.: -0.005 min
 Response: 24805648
 Conc: 22.04 ng/ml