

Data Path : Z:\pestpcbsrv\HPCHEM1\ECD\_0\Data\P0051024\  
 Data File : P0103564.D  
 Signal(s) : Signal #1: ECD1A.ch Signal #2: ECD2B.ch  
 Acq On : 10 May 2024 12:36  
 Operator : YP/AJ  
 Sample : P2438-02  
 Misc :  
 ALS Vial : 15 Sample Multiplier: 1

**Instrument :**  
 ECD\_0  
**ClientSampleId :**  
 50317

**Manual Integrations**  
**APPROVED**

Reviewed By :Yogesh Patel 05/13/2024  
 Supervised By :Ankita Jodhani 05/13/2024

Integration File signal 1: autoint1.e  
 Integration File signal 2: autoint2.e  
 Quant Time: May 10 13:28:09 2024  
 Quant Method : Z:\pestpcbsrv\HPCHEM1\ECD\_0\methods\P0050624.M  
 Quant Title : GC EXTRACTABLES  
 QLast Update : Tue May 07 04:55:35 2024  
 Response via : Initial Calibration  
 Integrator: ChemStation

Volume Inj. : 2 µl  
 Signal #1 Phase : ZB-MR1 Signal #2 Phase: ZB-MR2  
 Signal #1 Info : 30Mx0.32mmx 0.50µ Signal #2 Info : 30M x 0.32mm x 0.25µm

Compound	RT#1	RT#2	Resp#1	Resp#2	ng/ml	ng/ml
-----						
System Monitoring Compounds						
1) SA Tetrachlo...	4.451	3.586	164.0E6	58723800	21.310	23.311
2) SA Decachlor...	10.209	8.548	109.9E6	26908442	23.184	20.685
Target Compounds						
16) L4 AR-1242-1	5.619	4.664	64065648	20760272	313.086m	314.033m
17) L4 AR-1242-2	5.642	4.682	79282739	29028398	272.167m	291.619m
18) L4 AR-1242-3	5.705	4.857	51784515	17814540	298.755m	325.492
19) L4 AR-1242-4	5.803	4.940	44929982	13373495	312.795m	269.221
20) L4 AR-1242-5	6.538	5.458	11095404	5657919	77.489	92.550
-----						

(f)=RT Delta > 1/2 Window (#)=Amounts differ by > 25% (m)=manual int.

Data Path : Z:\pestpcbsrv\HPCHEM1\ECD\_O\Data\PO051024\  
 Data File : PO103564.D  
 Signal(s) : Signal #1: ECD1A.ch Signal #2: ECD2B.ch  
 Acq On : 10 May 2024 12:36  
 Operator : YP/AJ  
 Sample : P2438-02  
 Misc :  
 ALS Vial : 15 Sample Multiplier: 1

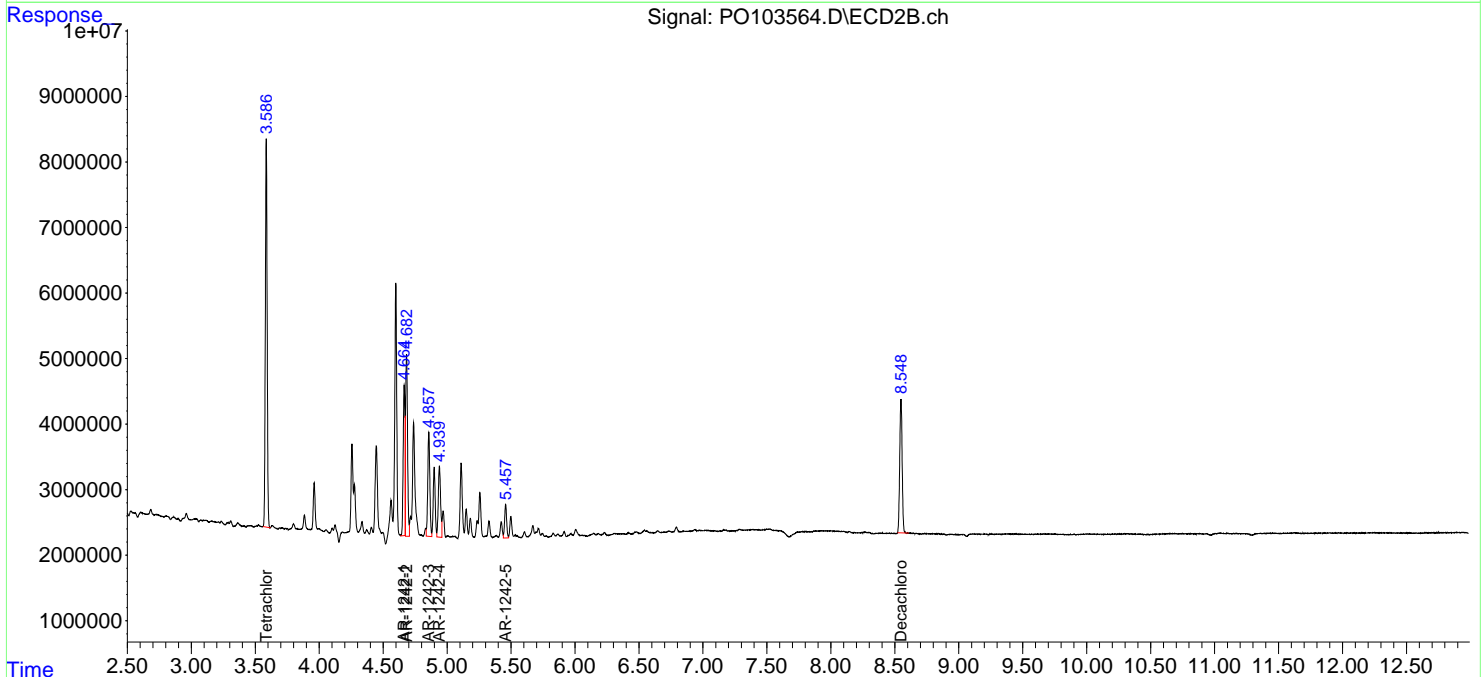
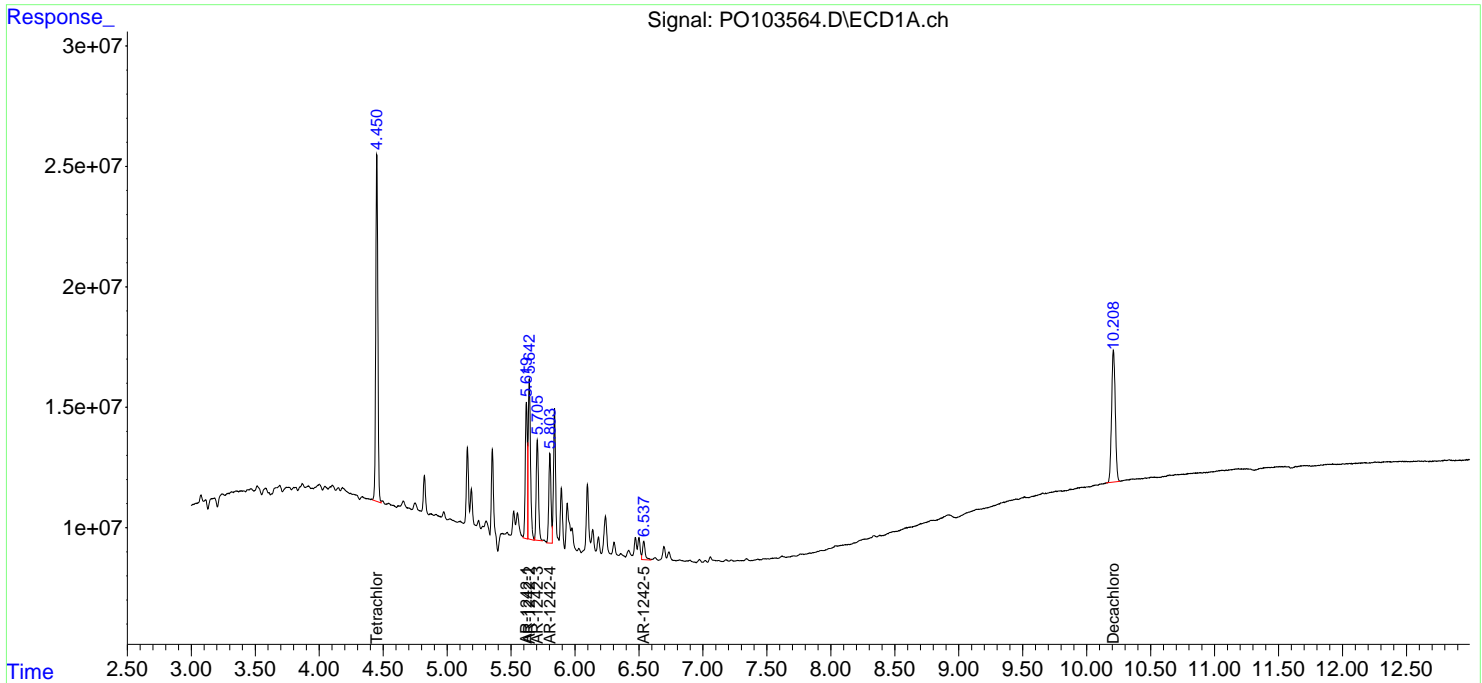
**Instrument :**  
 ECD\_O  
**ClientSampleId :**  
 50317

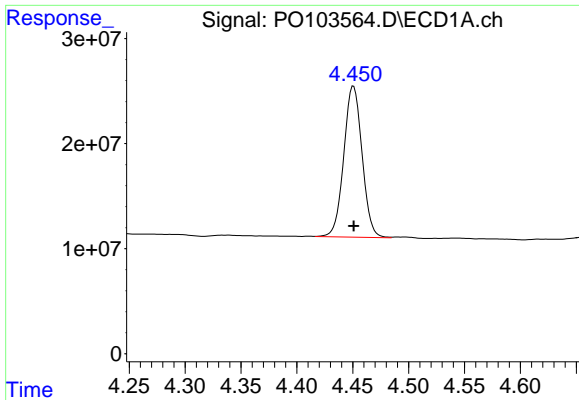
**Manual Integrations**  
**APPROVED**

Reviewed By :Yogesh Patel 05/13/2024  
 Supervised By :Ankita Jodhani 05/13/2024

Integration File signal 1: autoint1.e  
 Integration File signal 2: autoint2.e  
 Quant Time: May 10 13:28:09 2024  
 Quant Method : Z:\pestpcbsrv\HPCHEM1\ECD\_O\methods\PO050624.M  
 Quant Title : GC EXTRACTABLES  
 QLast Update : Tue May 07 04:55:35 2024  
 Response via : Initial Calibration  
 Integrator: ChemStation

Volume Inj. : 2 µl  
 Signal #1 Phase : ZB-MR1 Signal #2 Phase: ZB-MR2  
 Signal #1 Info : 30Mx0.32mmx 0.50µ Signal #2 Info : 30M x 0.32mm x 0.25µm





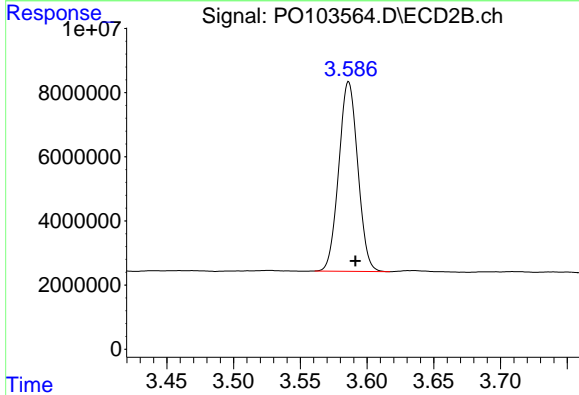
#1 Tetrachloro-m-xylene

R.T.: 4.451 min  
 Delta R.T.: 0.000 min  
 Response: 163992643  
 Conc: 21.31 ng/ml

Instrument :  
 ECD\_O  
 ClientSampleId :  
 50317

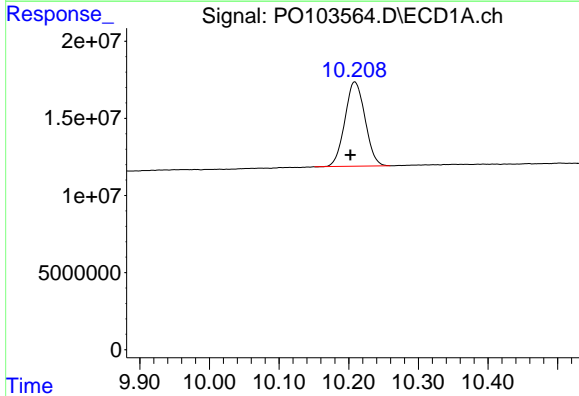
Manual Integrations  
 APPROVED

Reviewed By :Yogesh Patel 05/13/2024  
 Supervised By :Ankita Jodhani 05/13/2024



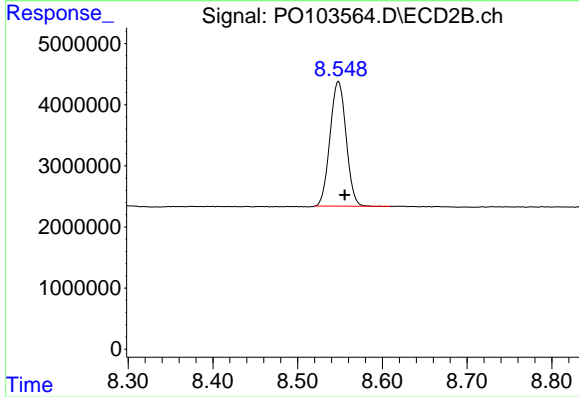
#1 Tetrachloro-m-xylene

R.T.: 3.586 min  
 Delta R.T.: -0.005 min  
 Response: 58723800  
 Conc: 23.31 ng/ml



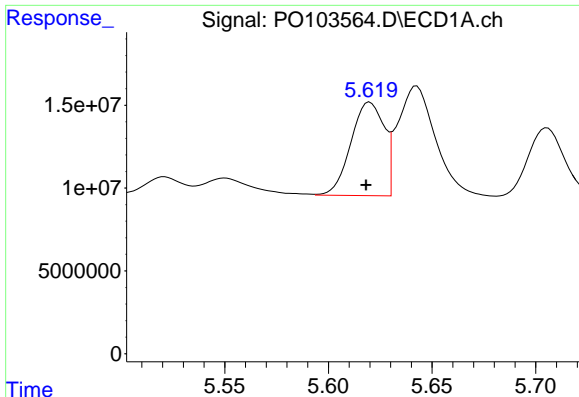
#2 Decachlorobiphenyl

R.T.: 10.209 min  
 Delta R.T.: 0.006 min  
 Response: 109896048  
 Conc: 23.18 ng/ml



#2 Decachlorobiphenyl

R.T.: 8.548 min  
 Delta R.T.: -0.008 min  
 Response: 26908442  
 Conc: 20.68 ng/ml



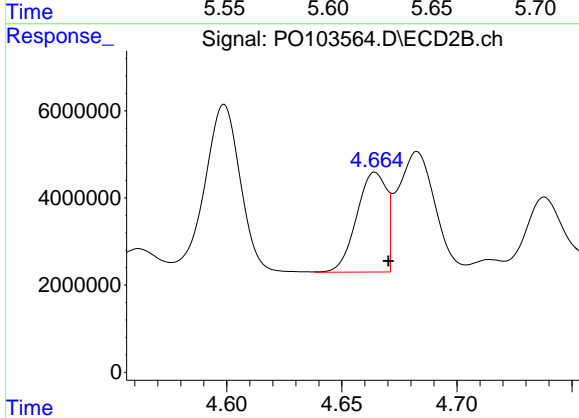
#16 AR-1242-1

R.T.: 5.619 min  
 Delta R.T.: 0.001 min  
 Response: 64065648  
 Conc: 313.09 ng/ml

Instrument :  
 ECD\_O  
 ClientSampleId :  
 50317

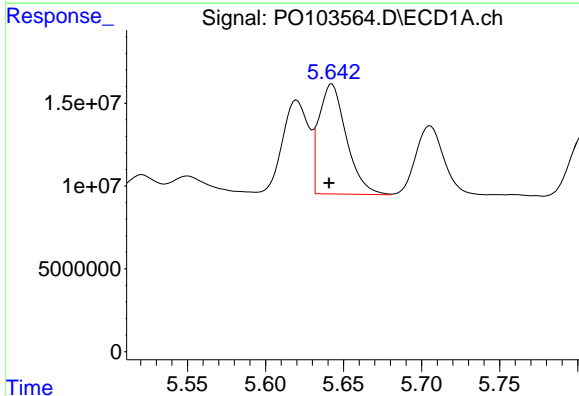
Manual Integrations  
 APPROVED

Reviewed By :Yogesh Patel 05/13/2024  
 Supervised By :Ankita Jodhani 05/13/2024



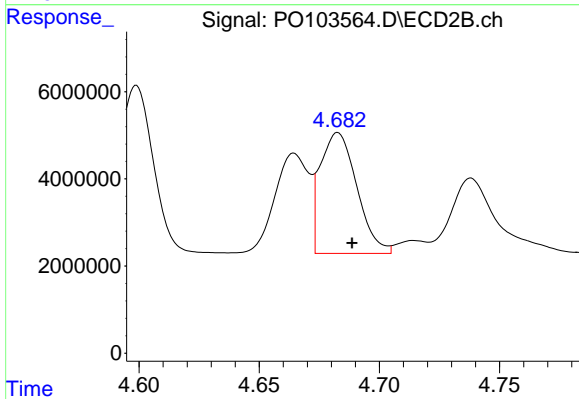
#16 AR-1242-1

R.T.: 4.664 min  
 Delta R.T.: -0.006 min  
 Response: 20760272  
 Conc: 314.03 ng/ml m



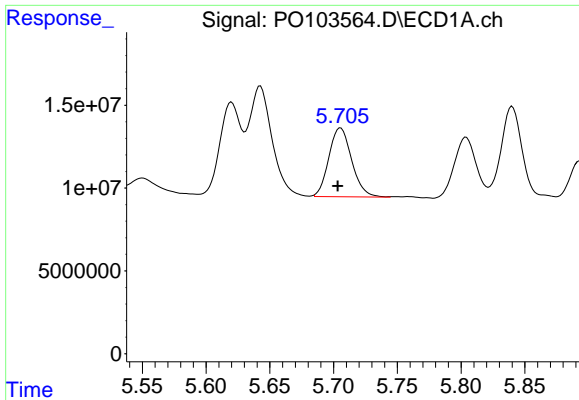
#17 AR-1242-2

R.T.: 5.642 min  
 Delta R.T.: 0.001 min  
 Response: 79282739  
 Conc: 272.17 ng/ml m



#17 AR-1242-2

R.T.: 4.682 min  
 Delta R.T.: -0.006 min  
 Response: 29028398  
 Conc: 291.62 ng/ml m



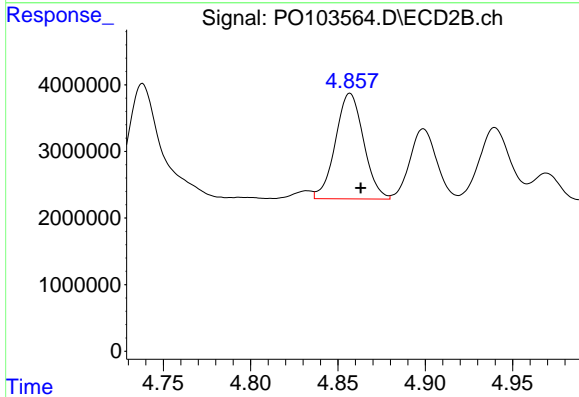
#18 AR-1242-3

R.T.: 5.705 min  
 Delta R.T.: 0.002 min  
 Response: 51784515  
 Conc: 298.75 ng/ml

Instrument :  
 ECD\_O  
 ClientSampleId :  
 50317

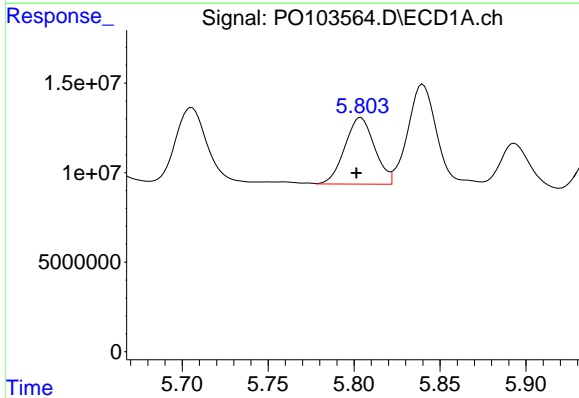
Manual Integrations  
 APPROVED

Reviewed By :Yogesh Patel 05/13/2024  
 Supervised By :Ankita Jodhani 05/13/2024



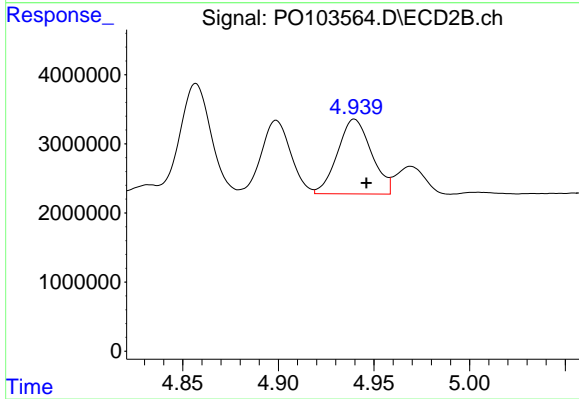
#18 AR-1242-3

R.T.: 4.857 min  
 Delta R.T.: -0.006 min  
 Response: 17814540  
 Conc: 325.49 ng/ml



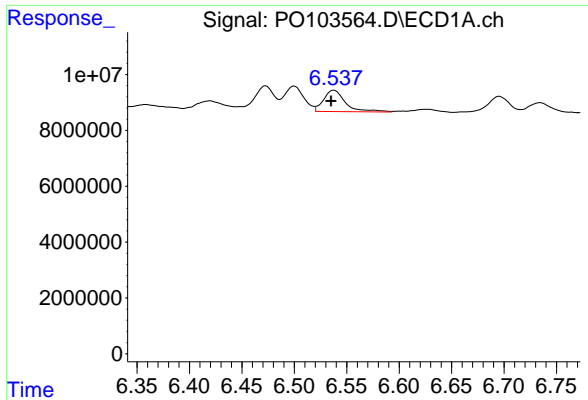
#19 AR-1242-4

R.T.: 5.803 min  
 Delta R.T.: 0.002 min  
 Response: 44929982  
 Conc: 312.79 ng/ml m



#19 AR-1242-4

R.T.: 4.940 min  
 Delta R.T.: -0.006 min  
 Response: 13373495  
 Conc: 269.22 ng/ml



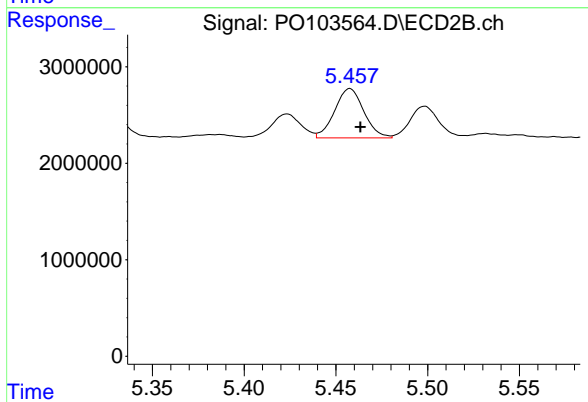
#20 AR-1242-5

R.T.: 6.538 min  
 Delta R.T.: 0.003 min  
 Response: 11095404  
 Conc: 77.49 ng/ml

Instrument :  
 ECD\_O  
 ClientSampleId :  
 50317

Manual Integrations  
 APPROVED

Reviewed By :Yogesh Patel 05/13/2024  
 Supervised By :Ankita Jodhani 05/13/2024



#20 AR-1242-5

R.T.: 5.458 min  
 Delta R.T.: -0.006 min  
 Response: 5657919  
 Conc: 92.55 ng/ml