

Data Path : Z:\pestpcbsrv\HPCHEM1\ECD\_0\Data\P0051024\  
 Data File : P0103598.D  
 Signal(s) : Signal #1: ECD1A.ch Signal #2: ECD2B.ch  
 Acq On : 10 May 2024 23:12  
 Operator : YP/AJ  
 Sample : AR1254CCC500  
 Misc :  
 ALS Vial : 6 Sample Multiplier: 1

**Instrument :**  
 ECD\_0  
**ClientSampleId :**  
 AR1254CCC500

**Manual Integrations**  
**APPROVED**  
 Reviewed By :Yogesh Patel 05/13/2024  
 Supervised By :Ankita Jodhani 05/13/2024

Integration File signal 1: autoint1.e  
 Integration File signal 2: autoint2.e  
 Quant Time: May 10 23:41:16 2024  
 Quant Method : Z:\pestpcbsrv\HPCHEM1\ECD\_0\methods\P0050624.M  
 Quant Title : GC EXTRACTABLES  
 QLast Update : Tue May 07 04:55:35 2024  
 Response via : Initial Calibration  
 Integrator: ChemStation

Volume Inj. : 2 µl  
 Signal #1 Phase : ZB-MR1 Signal #2 Phase: ZB-MR2  
 Signal #1 Info : 30Mx0.32mmx 0.50µ Signal #2 Info : 30M x 0.32mm x 0.25µm

Compound	RT#1	RT#2	Resp#1	Resp#2	ng/ml	ng/ml
-----						
System Monitoring Compounds						
1) SA Tetrachlo...	4.450	3.585	364.2E6	130.8E6	47.321	51.931
2) SA Decachlor...	10.209	8.544	236.7E6	48490141	49.938	37.275m#
Target Compounds						
26) L6 AR-1254-1	6.473	5.457	102.3E6	50211975	415.397	411.965
27) L6 AR-1254-2	6.691	5.603	159.5E6	45643157	440.568	432.218
28) L6 AR-1254-3	7.056	6.003	161.9E6	68869476	444.804	400.713
29) L6 AR-1254-4	7.341	6.228	125.6E6	44542751	443.153	432.217
30) L6 AR-1254-5	7.759	6.643	112.4E6	55777426	421.615	404.242
-----						

(f)=RT Delta > 1/2 Window (#)=Amounts differ by > 25% (m)=manual int.

Data Path : Z:\pestpcbsrv\HPCHEM1\ECD\_O\Data\PO051024\  
 Data File : PO103598.D  
 Signal(s) : Signal #1: ECD1A.ch Signal #2: ECD2B.ch  
 Acq On : 10 May 2024 23:12  
 Operator : YP/AJ  
 Sample : AR1254CCC500  
 Misc :  
 ALS Vial : 6 Sample Multiplier: 1

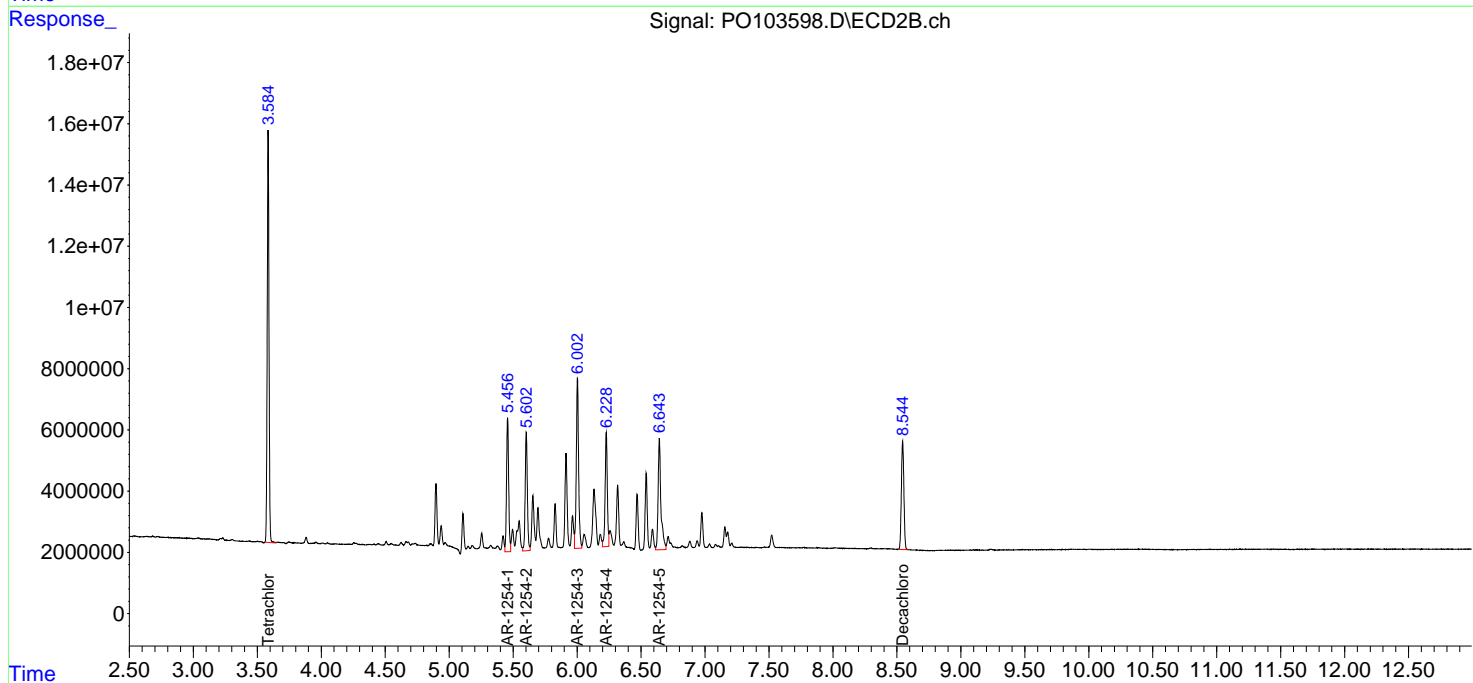
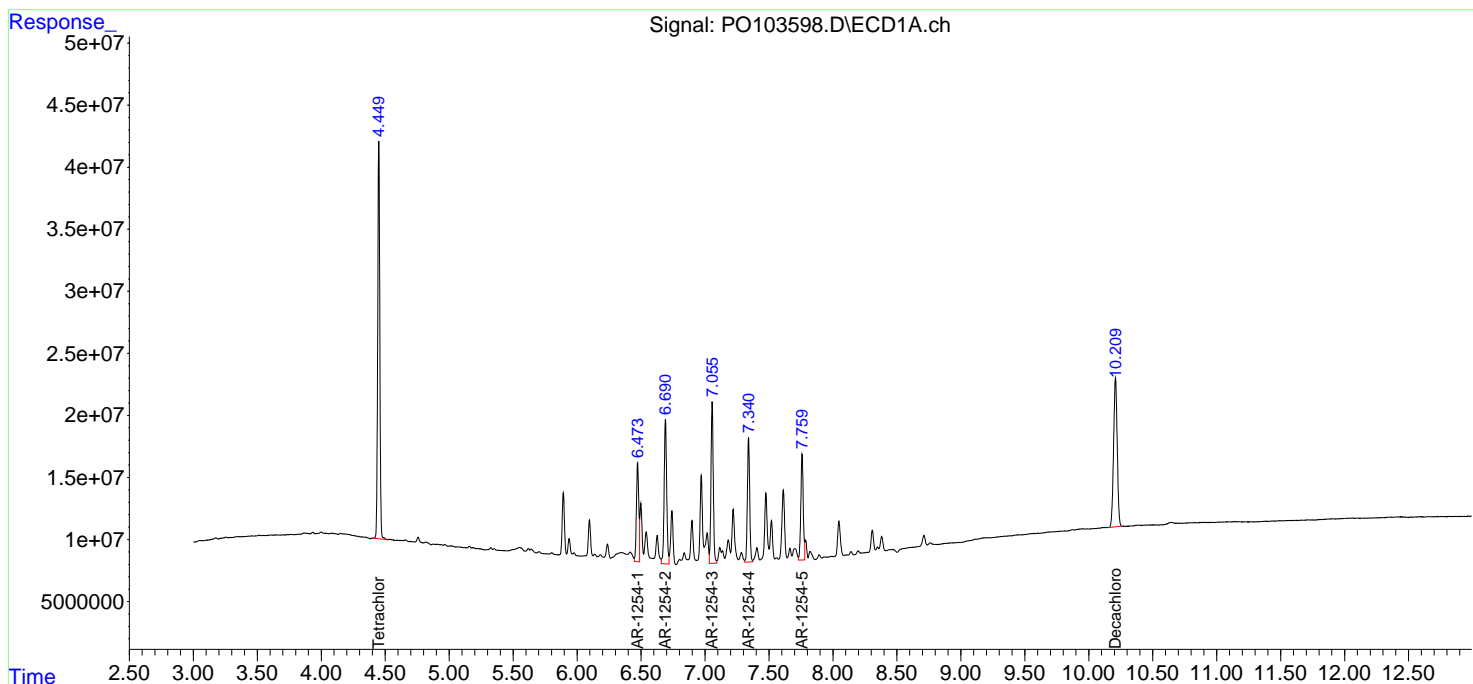
Instrument :  
 ECD\_O  
 ClientSampleId :  
 AR1254CCC500

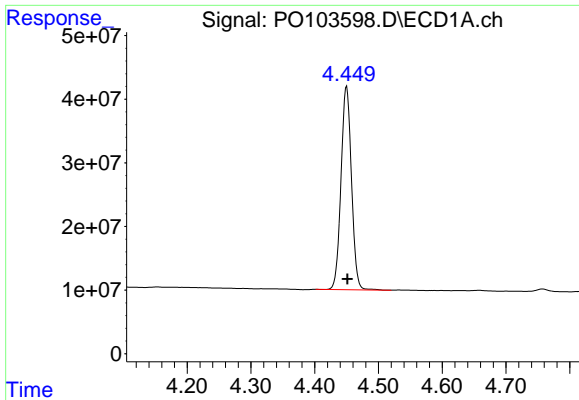
Manual Integrations  
 APPROVED

Reviewed By :Yogesh Patel 05/13/2024  
 Supervised By :Ankita Jodhani 05/13/2024

Integration File signal 1: autoint1.e  
 Integration File signal 2: autoint2.e  
 Quant Time: May 10 23:41:16 2024  
 Quant Method : Z:\pestpcbsrv\HPCHEM1\ECD\_O\methods\PO050624.M  
 Quant Title : GC EXTRACTABLES  
 QLast Update : Tue May 07 04:55:35 2024  
 Response via : Initial Calibration  
 Integrator: ChemStation

Volume Inj. : 2 µl  
 Signal #1 Phase : ZB-MR1 Signal #2 Phase: ZB-MR2  
 Signal #1 Info : 30Mx0.32mmx 0.50µ Signal #2 Info : 30M x 0.32mm x 0.25µm



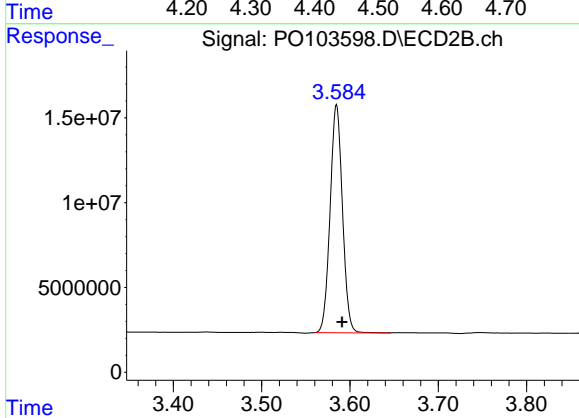


#1 Tetrachloro-m-xylene  
 R.T.: 4.450 min  
 Delta R.T.: 0.000 min  
 Response: 364166605  
 Conc: 47.32 ng/ml

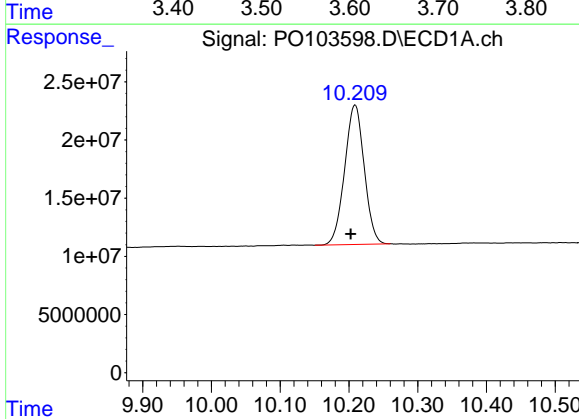
Instrument :  
 ECD\_O  
 ClientSampleId :  
 AR1254CCC500

Manual Integrations  
 APPROVED

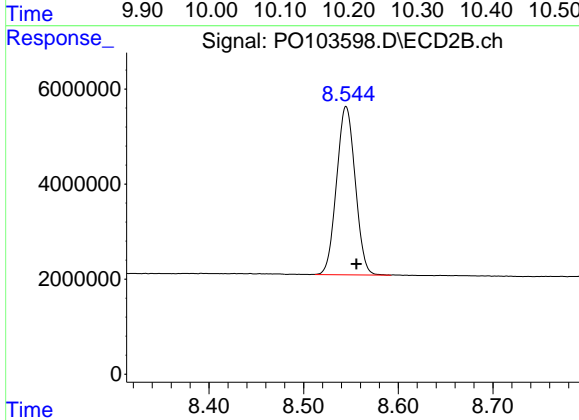
Reviewed By :Yogesh Patel 05/13/2024  
 Supervised By :Ankita Jodhani 05/13/2024



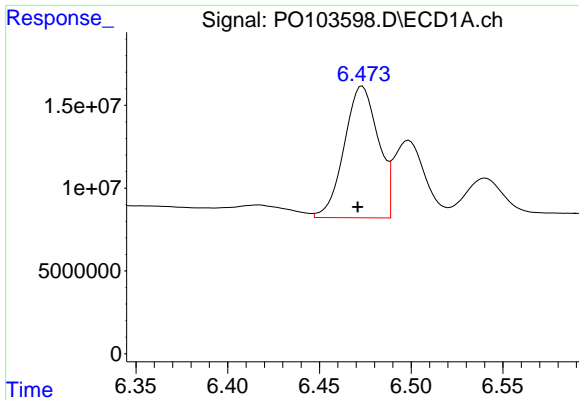
#1 Tetrachloro-m-xylene  
 R.T.: 3.585 min  
 Delta R.T.: -0.006 min  
 Response: 130823001  
 Conc: 51.93 ng/ml



#2 Decachlorobiphenyl  
 R.T.: 10.209 min  
 Delta R.T.: 0.007 min  
 Response: 236719893  
 Conc: 49.94 ng/ml



#2 Decachlorobiphenyl  
 R.T.: 8.544 min  
 Delta R.T.: -0.011 min  
 Response: 48490141  
 Conc: 37.27 ng/ml m



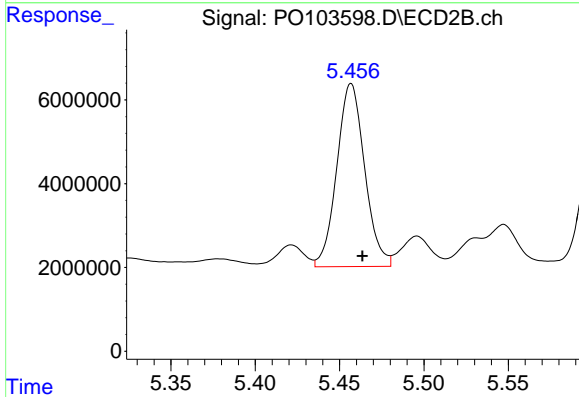
#26 AR-1254-1

R.T.: 6.473 min  
 Delta R.T.: 0.002 min  
 Response: 102293422  
 Conc: 415.40 ng/ml

Instrument :  
 ECD\_O  
 ClientSampleId :  
 AR1254CCC500

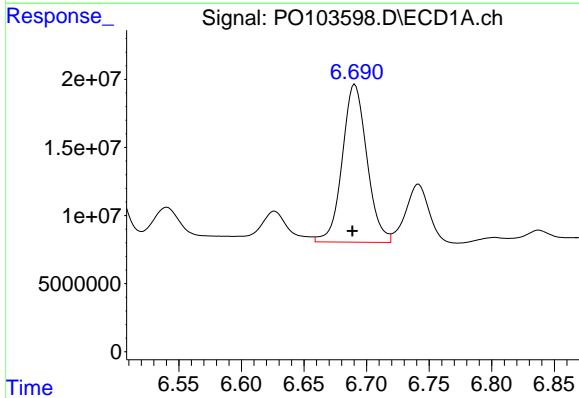
Manual Integrations  
 APPROVED

Reviewed By :Yogesh Patel 05/13/2024  
 Supervised By :Ankita Jodhani 05/13/2024



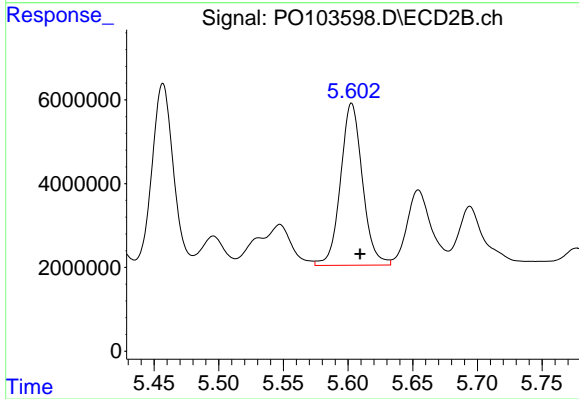
#26 AR-1254-1

R.T.: 5.457 min  
 Delta R.T.: -0.007 min  
 Response: 50211975  
 Conc: 411.96 ng/ml



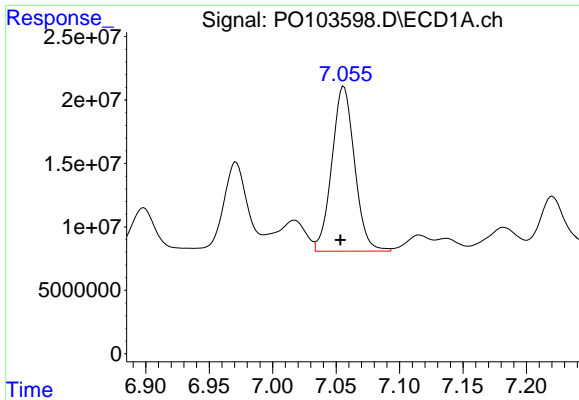
#27 AR-1254-2

R.T.: 6.691 min  
 Delta R.T.: 0.002 min  
 Response: 159460772  
 Conc: 440.57 ng/ml



#27 AR-1254-2

R.T.: 5.603 min  
 Delta R.T.: -0.006 min  
 Response: 45643157  
 Conc: 432.22 ng/ml



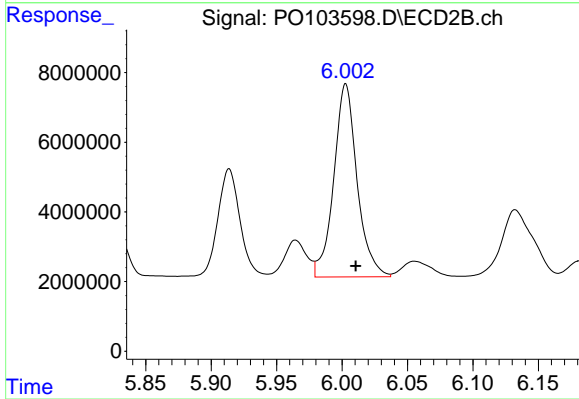
#28 AR-1254-3

R.T.: 7.056 min  
 Delta R.T.: 0.003 min  
 Response: 161930037  
 Conc: 444.80 ng/ml

Instrument :  
 ECD\_O  
 ClientSampleId :  
 AR1254CCC500

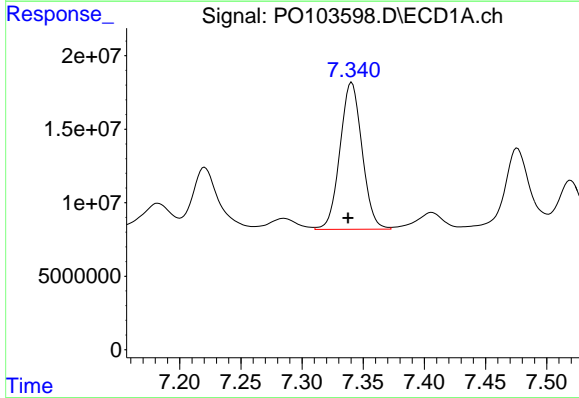
Manual Integrations  
 APPROVED

Reviewed By :Yogesh Patel 05/13/2024  
 Supervised By :Ankita Jodhani 05/13/2024



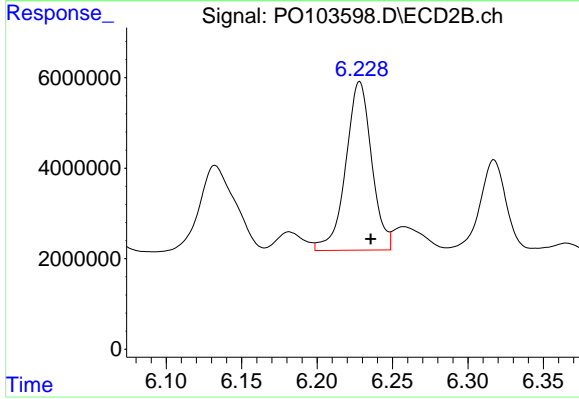
#28 AR-1254-3

R.T.: 6.003 min  
 Delta R.T.: -0.008 min  
 Response: 68869476  
 Conc: 400.71 ng/ml



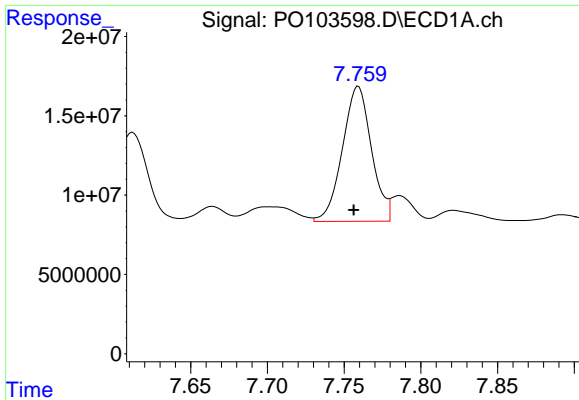
#29 AR-1254-4

R.T.: 7.341 min  
 Delta R.T.: 0.003 min  
 Response: 125613058  
 Conc: 443.15 ng/ml



#29 AR-1254-4

R.T.: 6.228 min  
 Delta R.T.: -0.007 min  
 Response: 44542751  
 Conc: 432.22 ng/ml



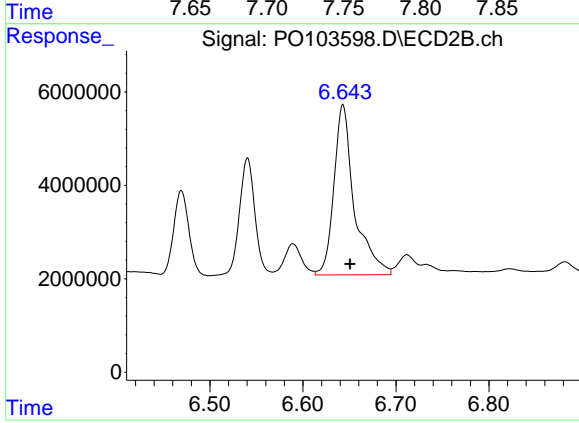
#30 AR-1254-5

R.T.: 7.759 min  
 Delta R.T.: 0.003 min  
 Response: 112356104  
 Conc: 421.61 ng/ml

Instrument :  
 ECD\_O  
 ClientSampleId :  
 AR1254CCC500

Manual Integrations  
 APPROVED

Reviewed By :Yogesh Patel 05/13/2024  
 Supervised By :Ankita Jodhani 05/13/2024



#30 AR-1254-5

R.T.: 6.643 min  
 Delta R.T.: -0.007 min  
 Response: 55777426  
 Conc: 404.24 ng/ml