

Data Path : Z:\pestpcbsrv\HPCHEM1\ECD\_0\Data\P0051121\  
 Data File : P0077666.D  
 Signal(s) : Signal #1: ECD1A.CH Signal #2: ECD2B.CH  
 Acq On : 11 May 2021 10:39  
 Operator : DD\AJ  
 Sample : AR1660ICC500  
 Misc :  
 ALS Vial : 5 Sample Multiplier: 1

Instrument :  
 ECD\_0  
 ClientSampleId :

Integration File signal 1: autoint1.e  
 Integration File signal 2: autoint2.e  
 Quant Time: May 11 11:09:30 2021  
 Quant Method : Z:\pestpcbsrv\HPCHEM1\ECD\_0\methods\P0051121.M  
 Quant Title : GC EXTRACTABLES  
 QLast Update : Tue May 11 11:09:13 2021  
 Response via : Initial Calibration  
 Integrator: ChemStation 6890 Scale Mode: Small noise peaks clipped

Volume Inj. : 2 µl  
 Signal #1 Phase : ZB-MR1 Signal #2 Phase: ZB-MR2  
 Signal #1 Info : 30Mx0.32mmx 0.50µ Signal #2 Info : 30M x 0.32mm x 0.25µm

Compound	RT#1	RT#2	Resp#1	Resp#2	ng/ml	ng/ml
-----						
System Monitoring Compounds						
1) SA Tetrachlo...	4.369	3.646	3535250	852100	50.000	50.000
2) SA Decachlor...	9.992	8.849	2656204	871384	50.000	50.000
Target Compounds						
3) L1 AR-1016-1	5.665	4.880	1285632	340616	500.000	500.000
4) L1 AR-1016-2	5.688	4.900	1831774	447503	500.000	500.000
5) L1 AR-1016-3	5.752	5.087	1114458	237535	500.000	500.000
6) L1 AR-1016-4	5.856	5.140	907279	196216	500.000	500.000
7) L1 AR-1016-5	6.167	5.364	880723	248677	500.000	500.000
31) L7 AR-1260-1	7.327	6.446	1674565	489204	500.000	500.000
32) L7 AR-1260-2	7.591	6.643	1995666	595453	500.000	500.000
33) L7 AR-1260-3	7.951	6.795	1243727	562542	500.000	500.000
34) L7 AR-1260-4	8.178	7.273	1514383	410297	500.000	500.000
35) L7 AR-1260-5	8.490	7.519	2925653	966752	500.000	500.000

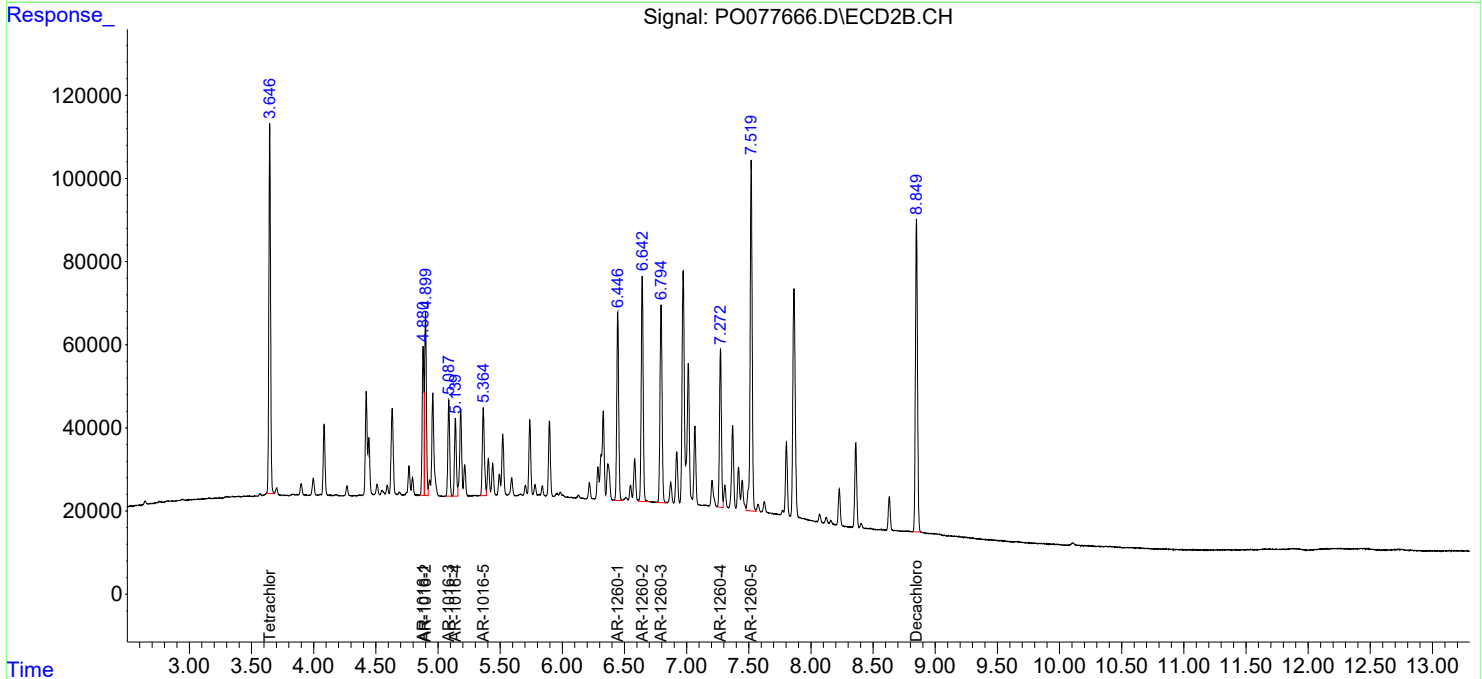
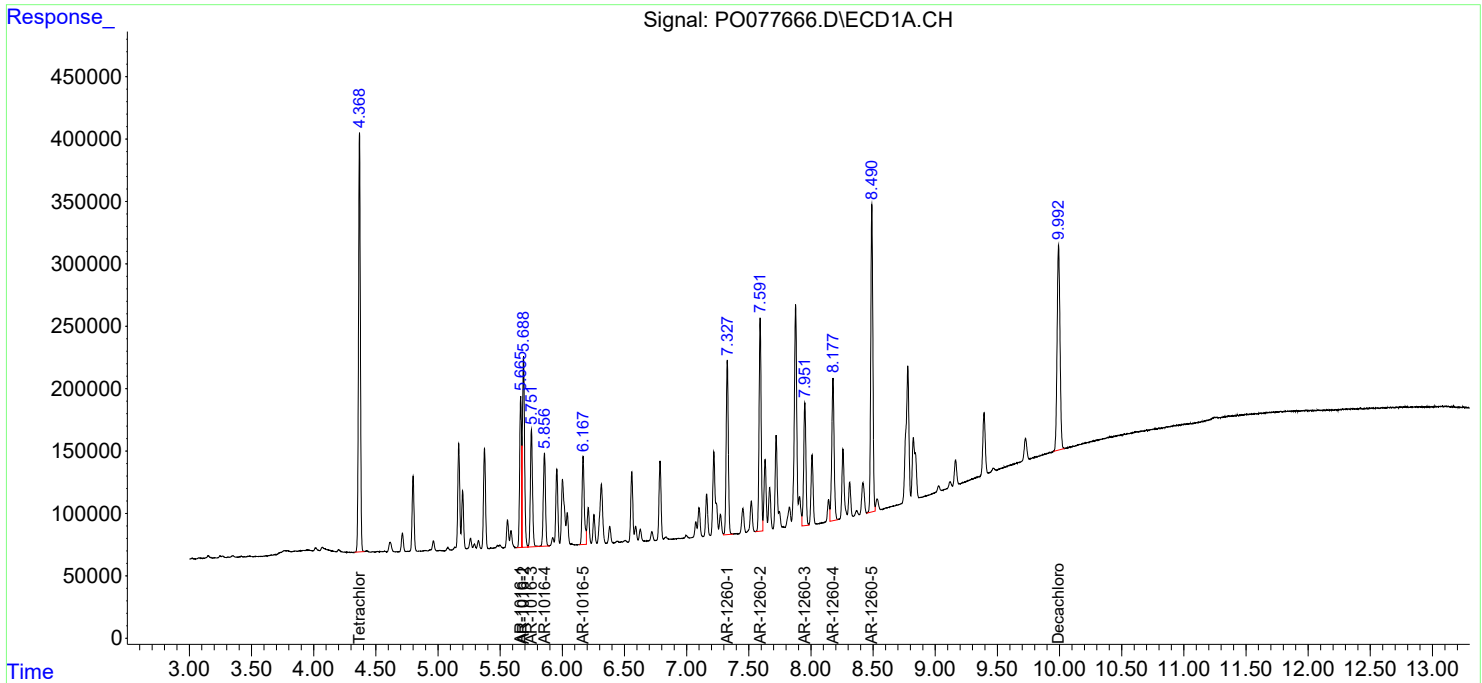
(f)=RT Delta > 1/2 Window (#)=Amounts differ by > 25% (m)=manual int.

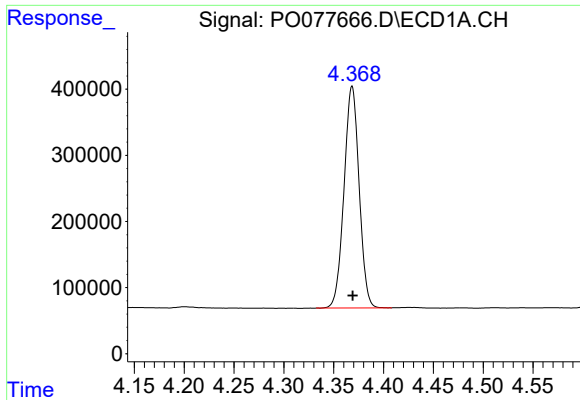
Data Path : Z:\pestpcbsrv\HPCHEM1\ECD\_0\Data\P0051121\  
 Data File : P0077666.D  
 Signal(s) : Signal #1: ECD1A.CH Signal #2: ECD2B.CH  
 Acq On : 11 May 2021 10:39  
 Operator : DD\AJ  
 Sample : AR1660ICC500  
 Misc :  
 ALS Vial : 5 Sample Multiplier: 1

Instrument :  
 ECD\_O  
 ClientSampled :

Integration File signal 1: autoint1.e  
 Integration File signal 2: autoint2.e  
 Quant Time: May 11 11:09:30 2021  
 Quant Method : Z:\pestpcbsrv\HPCHEM1\ECD\_0\methods\P0051121.M  
 Quant Title : GC EXTRACTABLES  
 QLast Update : Tue May 11 11:09:13 2021  
 Response via : Initial Calibration  
 Integrator: ChemStation 6890 Scale Mode: Small noise peaks clipped

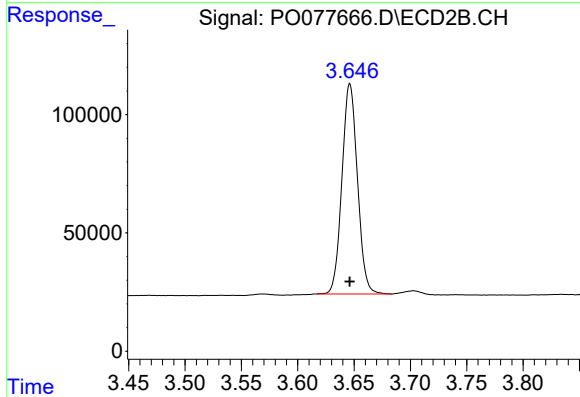
Volume Inj. : 2 µl  
 Signal #1 Phase : ZB-MR1 Signal #2 Phase: ZB-MR2  
 Signal #1 Info : 30Mx0.32mmx 0.50µ Signal #2 Info : 30M x 0.32mm x 0.25µm



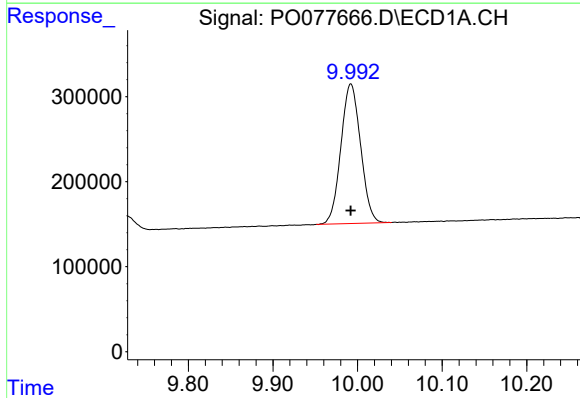


#1 Tetrachloro-m-xylene  
 R.T.: 4.369 min  
 Delta R.T.: 0.000 min  
 Response: 3535250  
 Conc: 50.00 ng/ml

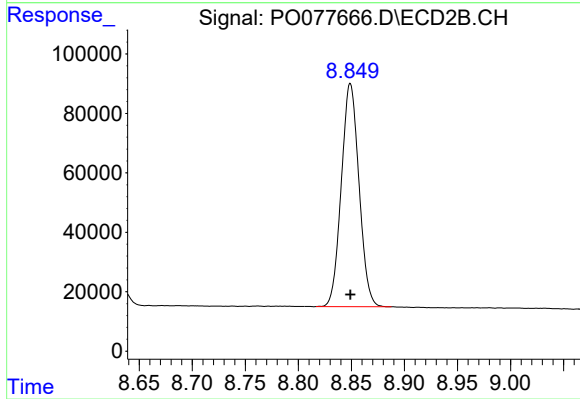
Instrument :  
 ECD\_O  
 ClientSampled :



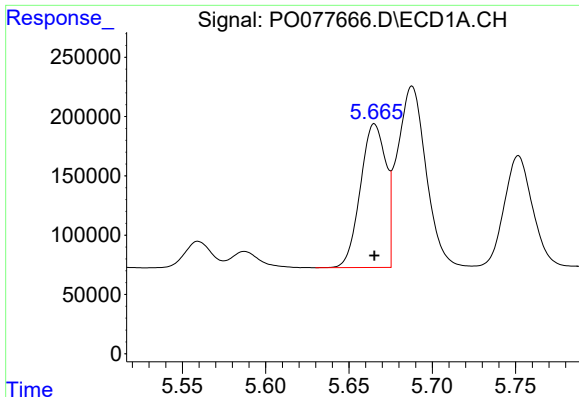
#1 Tetrachloro-m-xylene  
 R.T.: 3.646 min  
 Delta R.T.: 0.000 min  
 Response: 852100  
 Conc: 50.00 ng/ml



#2 Decachlorobiphenyl  
 R.T.: 9.992 min  
 Delta R.T.: 0.000 min  
 Response: 2656204  
 Conc: 50.00 ng/ml



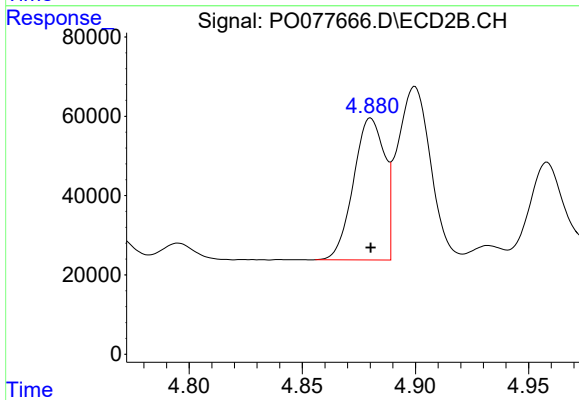
#2 Decachlorobiphenyl  
 R.T.: 8.849 min  
 Delta R.T.: 0.000 min  
 Response: 871384  
 Conc: 50.00 ng/ml



#3 AR-1016-1

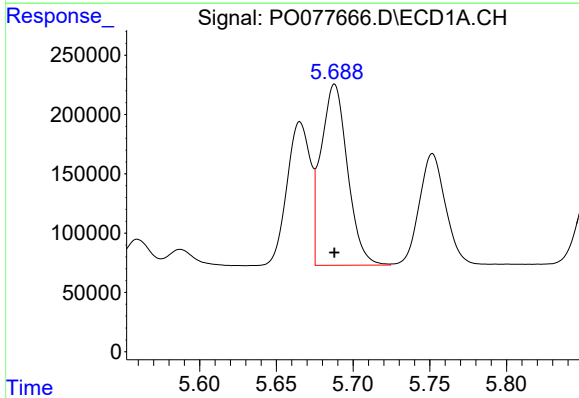
R.T.: 5.665 min  
 Delta R.T.: 0.000 min  
 Response: 1285632  
 Conc: 500.00 ng/ml

Instrument :  
 ECD\_O  
 ClientSampled :



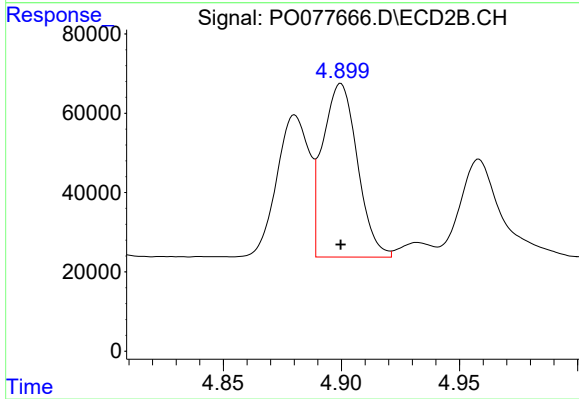
#3 AR-1016-1

R.T.: 4.880 min  
 Delta R.T.: 0.000 min  
 Response: 340616  
 Conc: 500.00 ng/ml



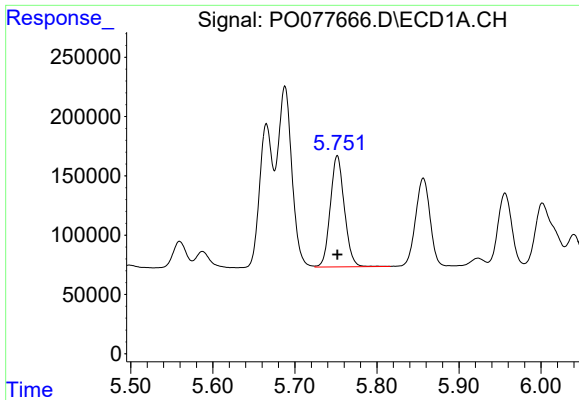
#4 AR-1016-2

R.T.: 5.688 min  
 Delta R.T.: 0.000 min  
 Response: 1831774  
 Conc: 500.00 ng/ml



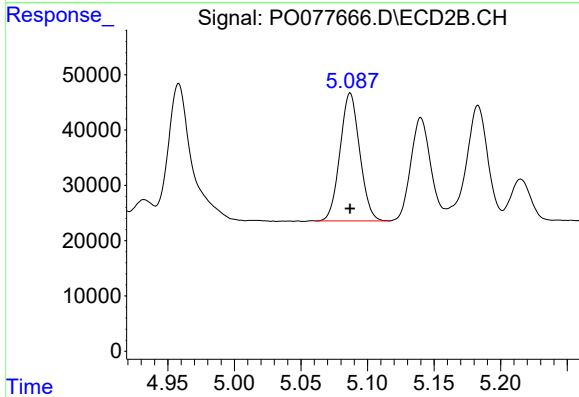
#4 AR-1016-2

R.T.: 4.900 min  
 Delta R.T.: 0.000 min  
 Response: 447503  
 Conc: 500.00 ng/ml

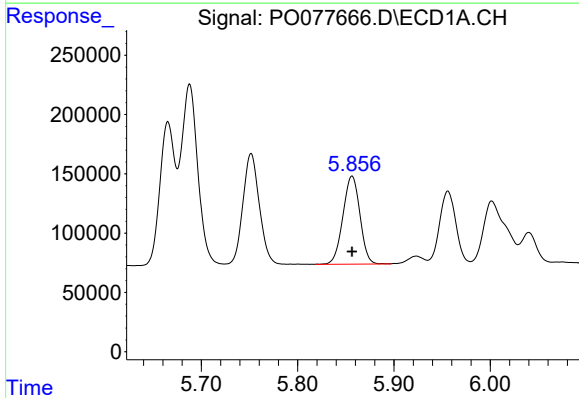


#5 AR-1016-3  
 R.T.: 5.752 min  
 Delta R.T.: 0.000 min  
 Response: 1114458  
 Conc: 500.00 ng/ml

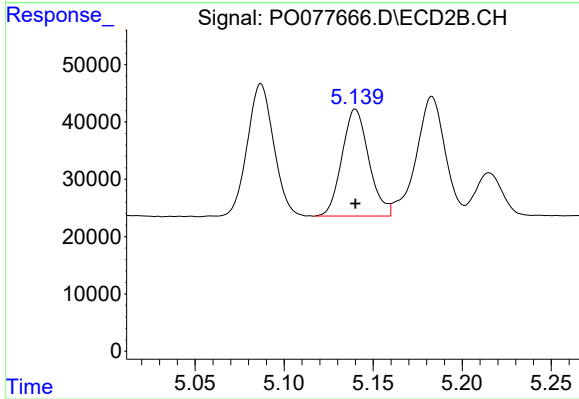
Instrument :  
 ECD\_O  
 ClientSampleId :



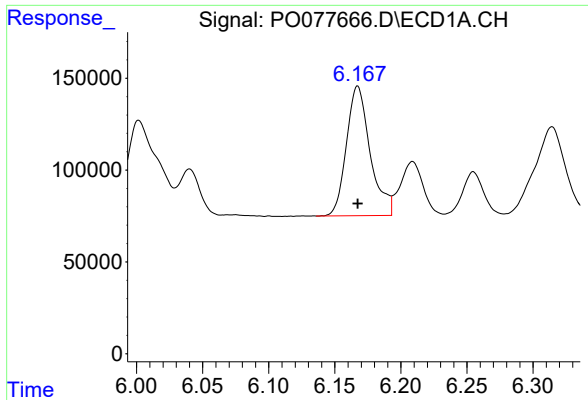
#5 AR-1016-3  
 R.T.: 5.087 min  
 Delta R.T.: 0.000 min  
 Response: 237535  
 Conc: 500.00 ng/ml



#6 AR-1016-4  
 R.T.: 5.856 min  
 Delta R.T.: 0.000 min  
 Response: 907279  
 Conc: 500.00 ng/ml



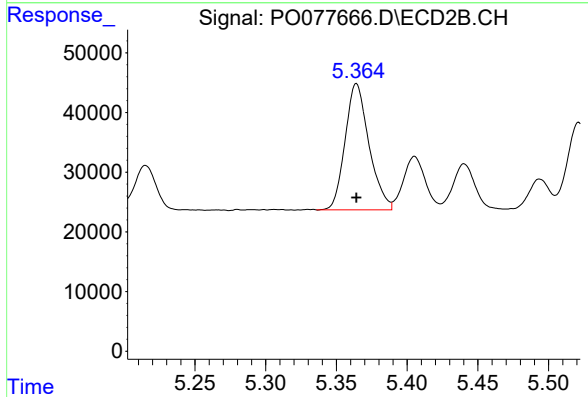
#6 AR-1016-4  
 R.T.: 5.140 min  
 Delta R.T.: 0.000 min  
 Response: 196216  
 Conc: 500.00 ng/ml



#7 AR-1016-5

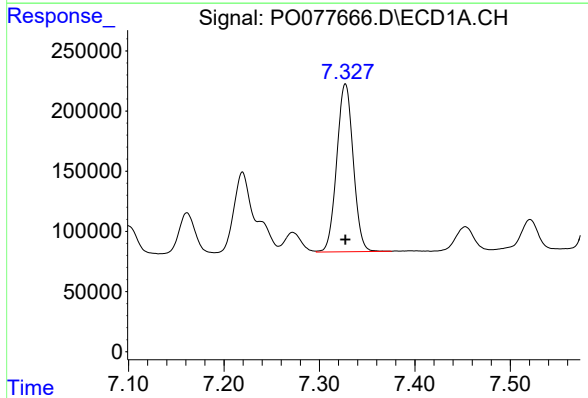
R.T.: 6.167 min  
 Delta R.T.: 0.000 min  
 Response: 880723  
 Conc: 500.00 ng/ml

Instrument :  
 ECD\_O  
 ClientSampleId :



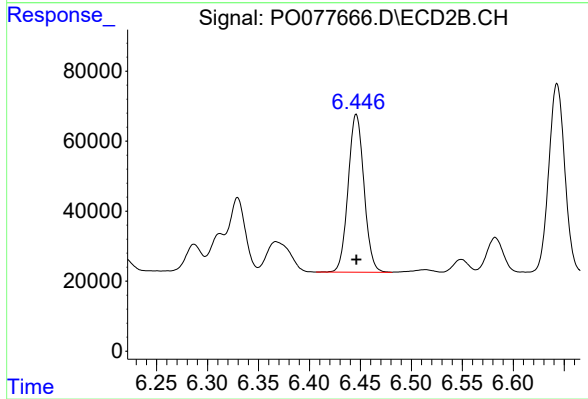
#7 AR-1016-5

R.T.: 5.364 min  
 Delta R.T.: 0.000 min  
 Response: 248677  
 Conc: 500.00 ng/ml



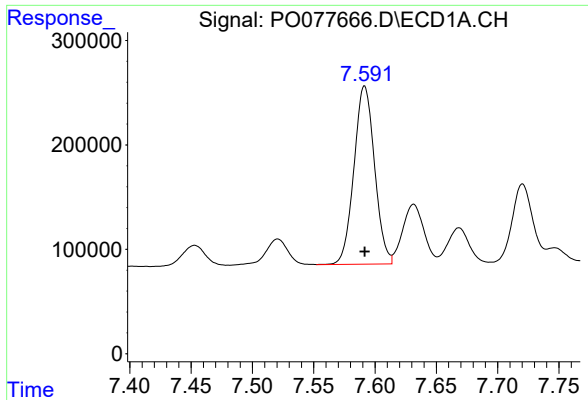
#31 AR-1260-1

R.T.: 7.327 min  
 Delta R.T.: 0.000 min  
 Response: 1674565  
 Conc: 500.00 ng/ml



#31 AR-1260-1

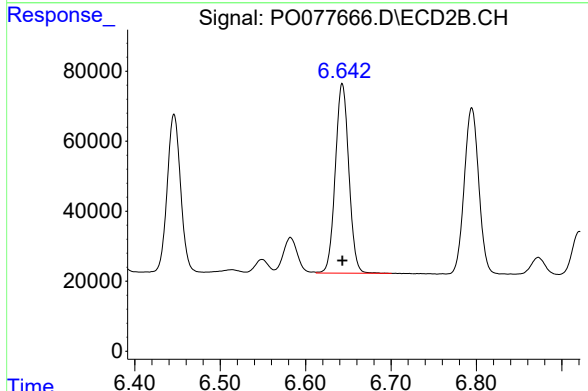
R.T.: 6.446 min  
 Delta R.T.: 0.000 min  
 Response: 489204  
 Conc: 500.00 ng/ml



#32 AR-1260-2

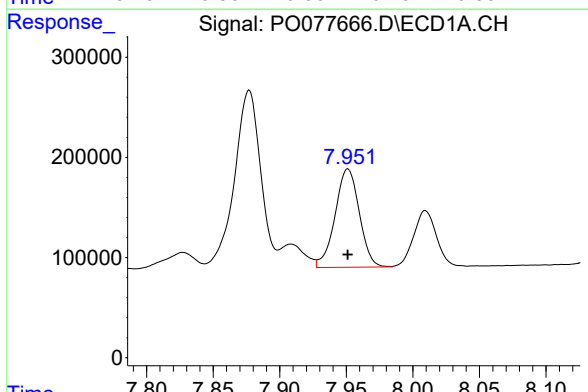
R.T.: 7.591 min  
 Delta R.T.: 0.000 min  
 Response: 1995666  
 Conc: 500.00 ng/ml

Instrument :  
 ECD\_O  
 ClientSampled :



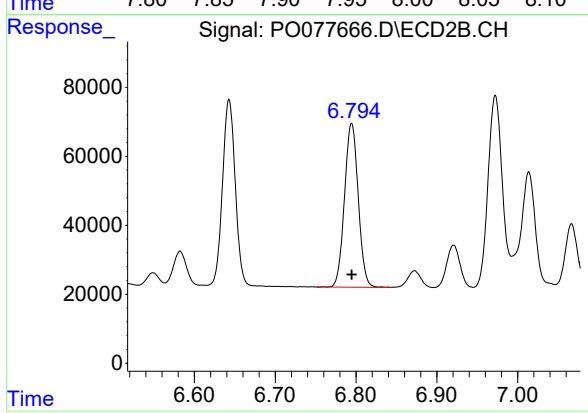
#32 AR-1260-2

R.T.: 6.643 min  
 Delta R.T.: 0.000 min  
 Response: 595453  
 Conc: 500.00 ng/ml



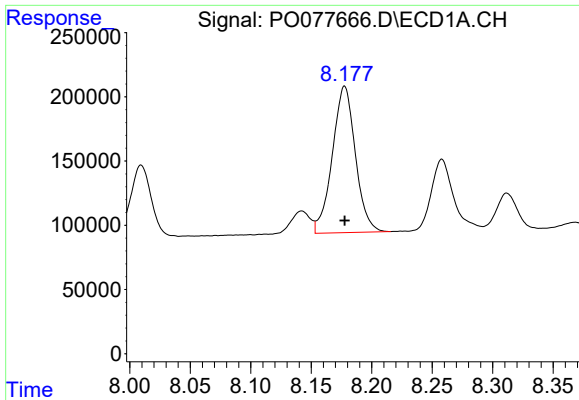
#33 AR-1260-3

R.T.: 7.951 min  
 Delta R.T.: 0.000 min  
 Response: 1243727  
 Conc: 500.00 ng/ml



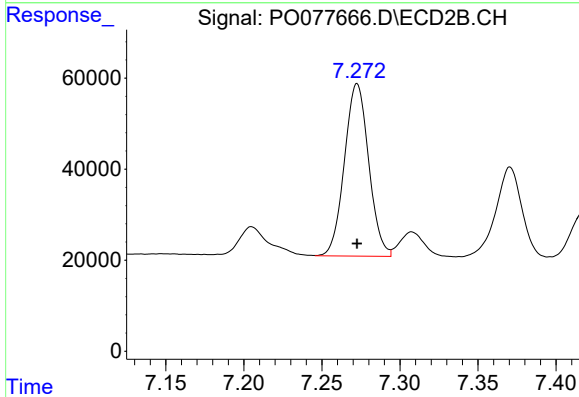
#33 AR-1260-3

R.T.: 6.795 min  
 Delta R.T.: 0.000 min  
 Response: 562542  
 Conc: 500.00 ng/ml

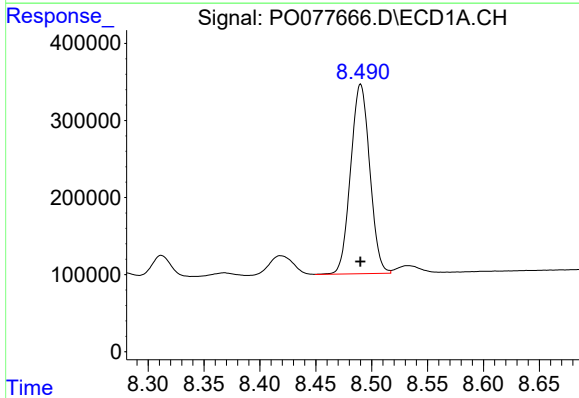


#34 AR-1260-4  
 R.T.: 8.178 min  
 Delta R.T.: 0.000 min  
 Response: 1514383  
 Conc: 500.00 ng/ml

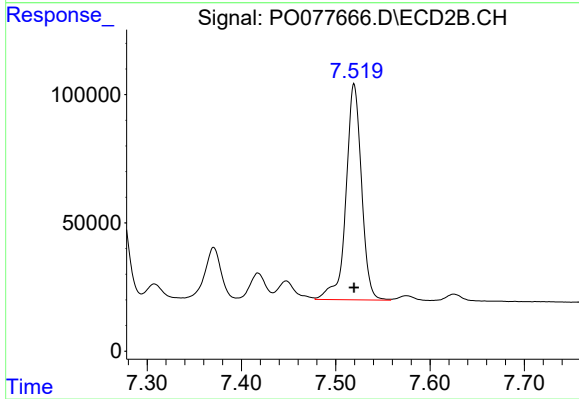
Instrument :  
 ECD\_O  
 ClientSampleId :



#34 AR-1260-4  
 R.T.: 7.273 min  
 Delta R.T.: 0.000 min  
 Response: 410297  
 Conc: 500.00 ng/ml



#35 AR-1260-5  
 R.T.: 8.490 min  
 Delta R.T.: 0.000 min  
 Response: 2925653  
 Conc: 500.00 ng/ml



#35 AR-1260-5  
 R.T.: 7.519 min  
 Delta R.T.: 0.000 min  
 Response: 966752  
 Conc: 500.00 ng/ml