

Data Path : Z:\pestpcbsrv\HPCHEM1\ECD\_0\Data\P0051121\  
 Data File : P0077680.D  
 Signal(s) : Signal #1: ECD1A.CH Signal #2: ECD2B.CH  
 Acq On : 11 May 2021 14:40  
 Operator : DD\AJ  
 Sample : M2262-01  
 Misc : AR1660 LOD 25 PPB  
 ALS Vial : 5 Sample Multiplier: 1

**Instrument :**  
 ECD\_0  
**ClientSampleId :**  
 LOD-MDL-SOIL-01-QT2-2021

**Manual Integrations**  
**APPROVED**  
 Ankita  
 5/13/2021 10:46:58 AM

Integration File signal 1: autoint1.e  
 Integration File signal 2: autoint2.e  
 Quant Time: May 11 22:54:05 2021  
 Quant Method : Z:\pestpcbsrv\HPCHEM1\ECD\_0\methods\P0051121.M  
 Quant Title : GC EXTRACTABLES  
 QLast Update : Tue May 11 15:14:32 2021  
 Response via : Initial Calibration  
 Integrator: ChemStation 6890 Scale Mode: Small noise peaks clipped

Volume Inj. : 2 µl  
 Signal #1 Phase : ZB-MR2 Signal #2 Phase: ZB-MR2  
 Signal #1 Info : 30Mx0.32mmx 0.50µ Signal #2 Info : 30M x 0.32mm x 0.25µm

Compound	RT#1	RT#2	Resp#1	Resp#2	ng/ml	ng/ml
-----						
System Monitoring Compounds						
1) SA Tetrachlo...	4.368	3.646	1300657	325955	18.736	19.386
2) SA Decachlor...	9.995	8.850	1030045	382243	19.604	21.674
Target Compounds						
3) L1 AR-1016-1	5.665	4.880	66321	20591	26.141	30.744
4) L1 AR-1016-2	5.687	4.899	89173	24361	24.795	27.383
5) L1 AR-1016-3	5.752	5.086	62914	11749	28.583	24.794
6) L1 AR-1016-4	5.855	5.141	54893	10156	30.426	25.830
7) L1 AR-1016-5	6.167	5.364	48919	11645	28.242	23.272
31) L7 AR-1260-1	7.328	6.445	78048	26537	23.297	26.937
32) L7 AR-1260-2	7.592	6.642	94271	31974	23.421	26.562
33) L7 AR-1260-3	7.952	6.793	64765	29348	26.052	26.456
34) L7 AR-1260-4	8.178	7.273	63584	22156	21.182	27.274 #
35) L7 AR-1260-5	8.491	7.519	123504	47685	21.495	24.598m
-----						

(f)=RT Delta > 1/2 Window (#)=Amounts differ by > 25% (m)=manual int.

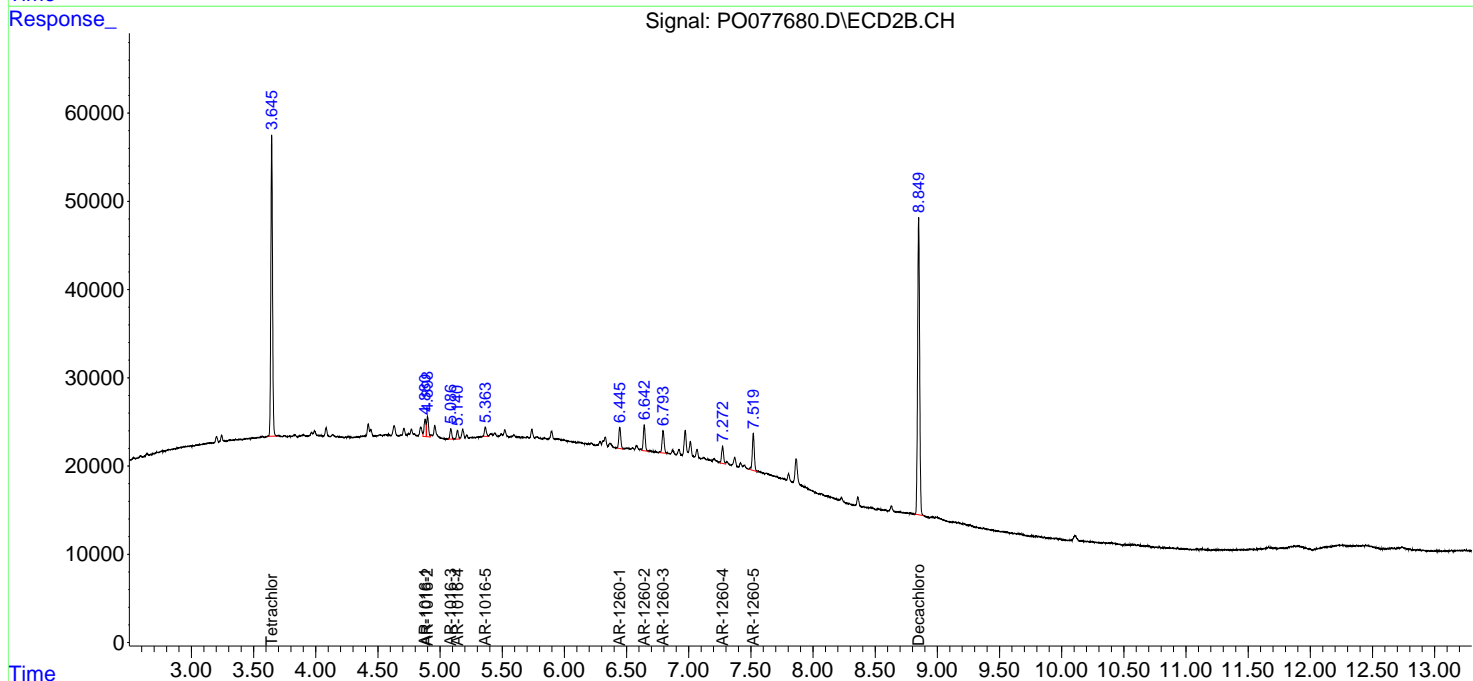
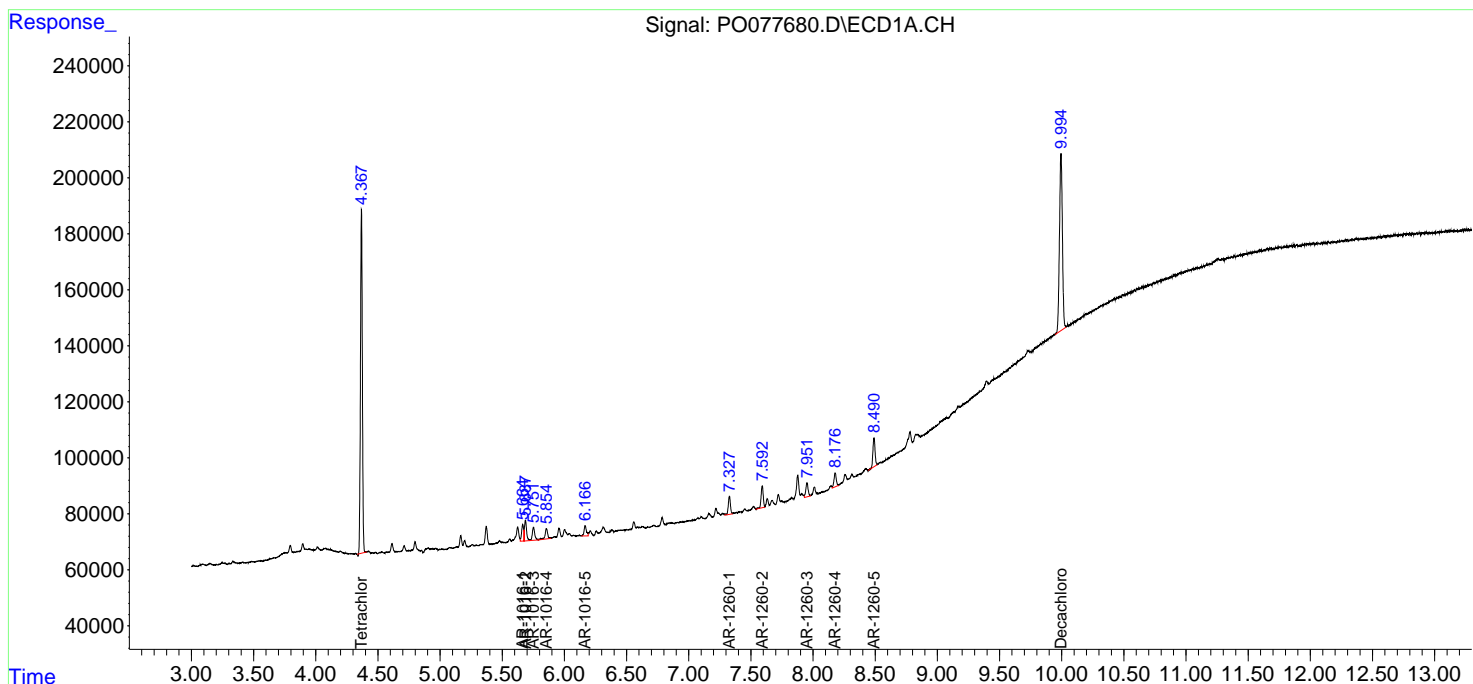
Data Path : Z:\pestpcbsrv\HPCHEM1\ECD\_O\Data\P0051121\  
 Data File : P0077680.D  
 Signal(s) : Signal #1: ECD1A.CH Signal #2: ECD2B.CH  
 Acq On : 11 May 2021 14:40  
 Operator : DD\AJ  
 Sample : M2262-01  
 Misc : AR1660 LOD 25 PPB  
 ALS Vial : 5 Sample Multiplier: 1

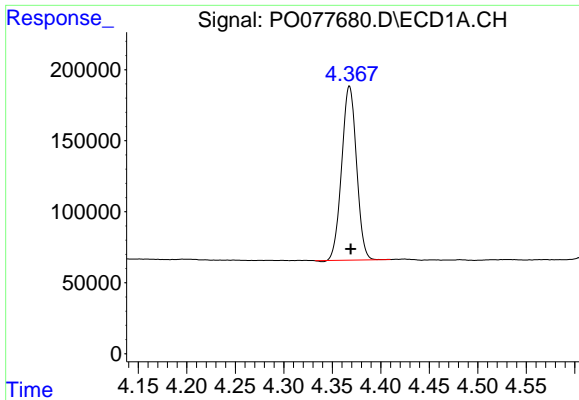
**Instrument :**  
 ECD\_O  
**Client Sampled :**  
 LOD-MDL-SOIL-01-QT2-2021

**Manual Integrations**  
**APPROVED**  
 Ankita  
 5/13/2021 10:46:58 AM

Integration File signal 1: autoint1.e  
 Integration File signal 2: autoint2.e  
 Quant Time: May 11 22:54:05 2021  
 Quant Method : Z:\pestpcbsrv\HPCHEM1\ECD\_O\methods\P0051121.M  
 Quant Title : GC EXTRACTABLES  
 QLast Update : Tue May 11 15:14:32 2021  
 Response via : Initial Calibration  
 Integrator: ChemStation 6890 Scale Mode: Small noise peaks clipped

Volume Inj. : 2 µl  
 Signal #1 Phase : ZB-MR1 Signal #2 Phase: ZB-MR2  
 Signal #1 Info : 30Mx0.32mmx 0.50µ Signal #2 Info : 30M x 0.32mm x 0.25µm

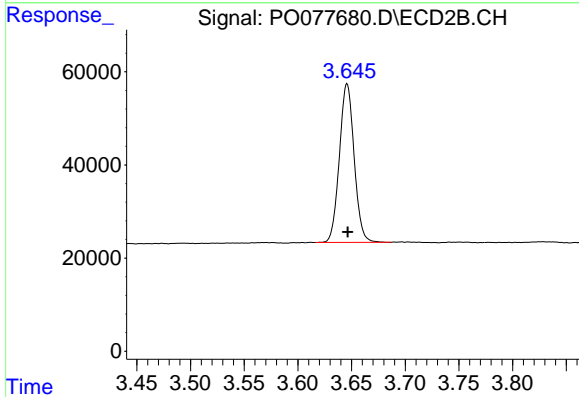




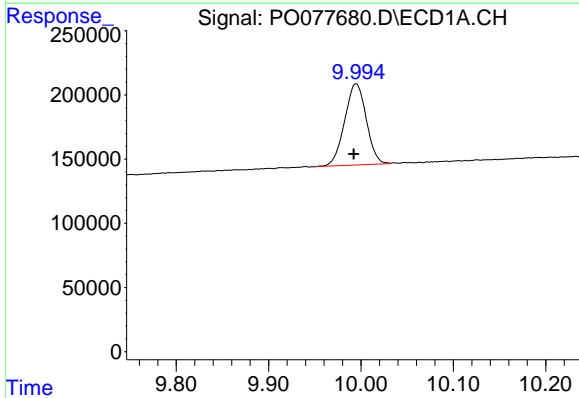
#1 Tetrachloro-m-xylene  
 R.T.: 4.368 min  
 Delta R.T.: -0.001 min  
 Response: 1300657  
 Conc: 18.74 ng/ml

Instrument :  
 ECD\_O  
 ClientSampled :  
 LOD-MDL-SOIL-01-QT2-2021

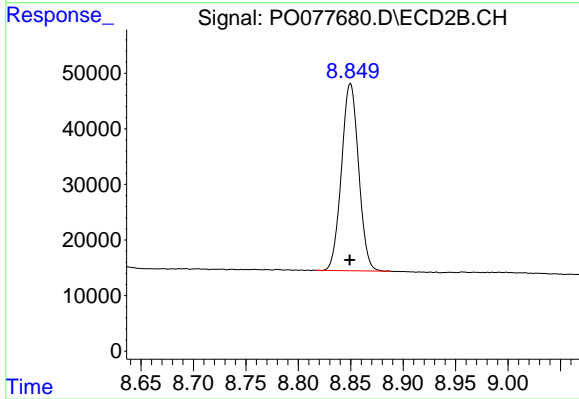
Manual Integrations  
 APPROVED  
 Ankita  
 5/13/2021 10:46:58 AM



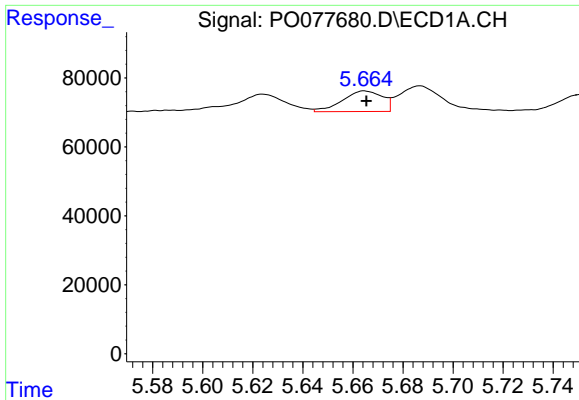
#1 Tetrachloro-m-xylene  
 R.T.: 3.646 min  
 Delta R.T.: 0.000 min  
 Response: 325955  
 Conc: 19.39 ng/ml



#2 Decachlorobiphenyl  
 R.T.: 9.995 min  
 Delta R.T.: 0.003 min  
 Response: 1030045  
 Conc: 19.60 ng/ml



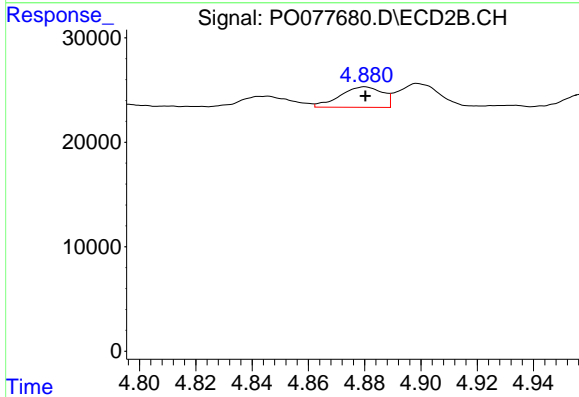
#2 Decachlorobiphenyl  
 R.T.: 8.850 min  
 Delta R.T.: 0.000 min  
 Response: 382243  
 Conc: 21.67 ng/ml



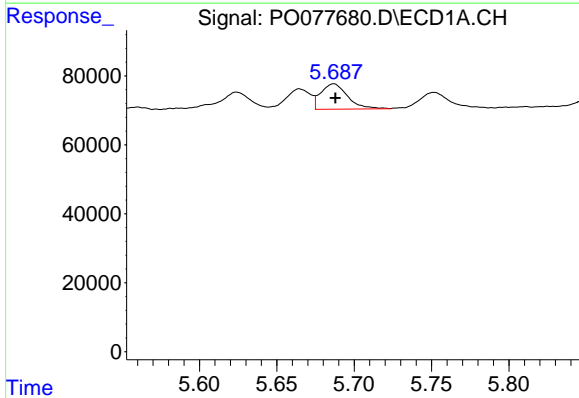
#3 AR-1016-1  
 R.T.: 5.665 min  
 Delta R.T.: 0.000 min  
 Response: 66321  
 Conc: 26.14 ng/ml

**Instrument :**  
 ECD\_O  
**ClientSampled :**  
 LOD-MDL-SOIL-01-QT2-2021

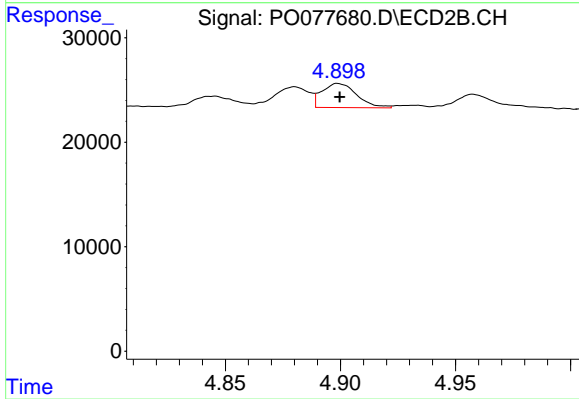
**Manual Integrations**  
**APPROVED**  
 Ankita  
 5/13/2021 10:46:58 AM



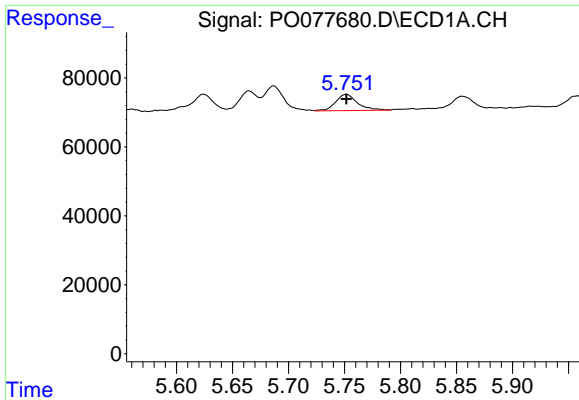
#3 AR-1016-1  
 R.T.: 4.880 min  
 Delta R.T.: 0.000 min  
 Response: 20591  
 Conc: 30.74 ng/ml



#4 AR-1016-2  
 R.T.: 5.687 min  
 Delta R.T.: -0.001 min  
 Response: 89173  
 Conc: 24.79 ng/ml



#4 AR-1016-2  
 R.T.: 4.899 min  
 Delta R.T.: 0.000 min  
 Response: 24361  
 Conc: 27.38 ng/ml

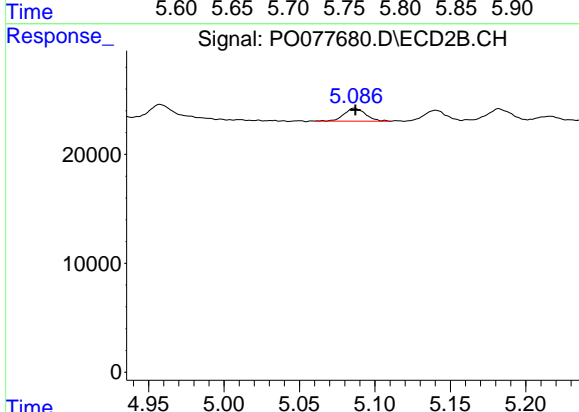


#5 AR-1016-3

R.T.: 5.752 min  
 Delta R.T.: 0.000 min  
 Response: 62914  
 Conc: 28.58 ng/ml

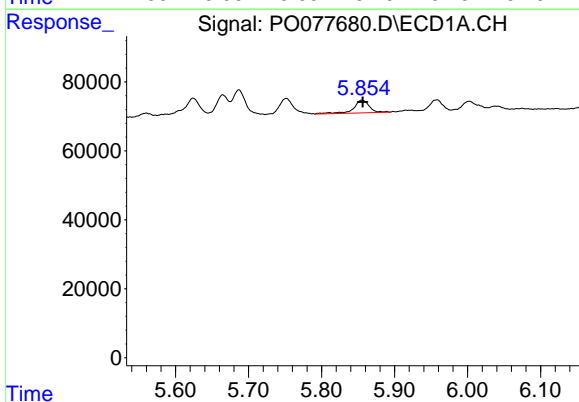
**Instrument :**  
 ECD\_O  
**ClientSampleId :**  
 LOD-MDL-SOIL-01-QT2-2021

**Manual Integrations**  
**APPROVED**  
 Ankita  
 5/13/2021 10:46:58 AM



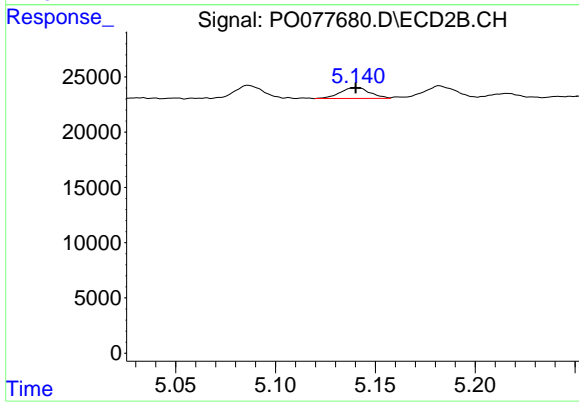
#5 AR-1016-3

R.T.: 5.086 min  
 Delta R.T.: 0.000 min  
 Response: 11749  
 Conc: 24.79 ng/ml



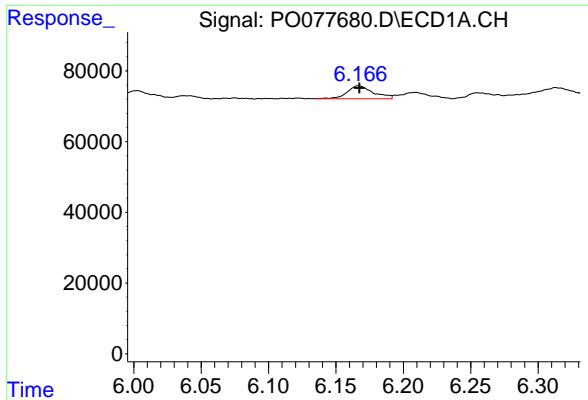
#6 AR-1016-4

R.T.: 5.855 min  
 Delta R.T.: -0.001 min  
 Response: 54893  
 Conc: 30.43 ng/ml



#6 AR-1016-4

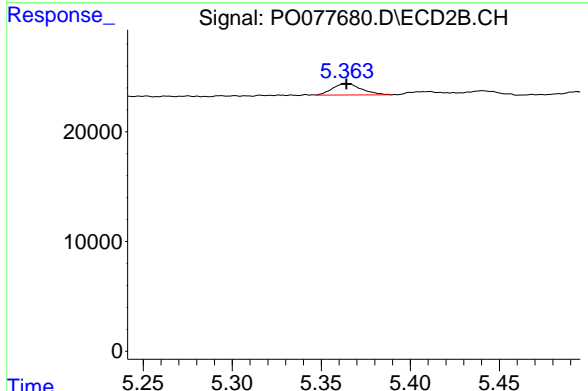
R.T.: 5.141 min  
 Delta R.T.: 0.000 min  
 Response: 10156  
 Conc: 25.83 ng/ml



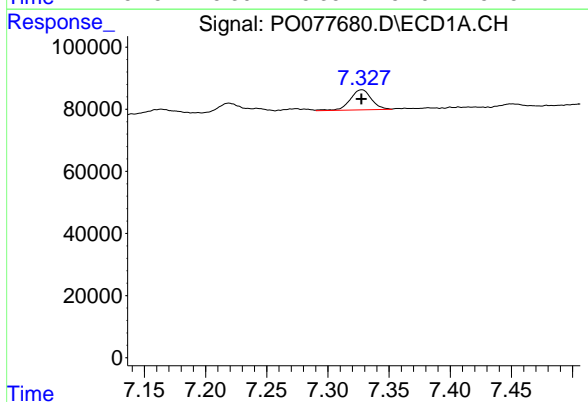
#7 AR-1016-5  
 R.T.: 6.167 min  
 Delta R.T.: 0.000 min  
 Response: 48919  
 Conc: 28.24 ng/ml

**Instrument :**  
 ECD\_O  
**ClientSampled :**  
 LOD-MDL-SOIL-01-QT2-2021

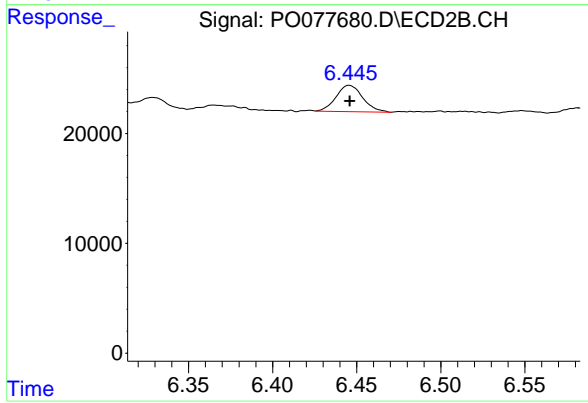
**Manual Integrations**  
**APPROVED**  
 Ankita  
 5/13/2021 10:46:58 AM



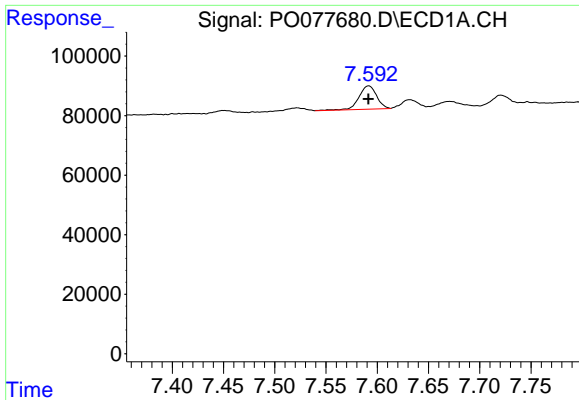
#7 AR-1016-5  
 R.T.: 5.364 min  
 Delta R.T.: 0.000 min  
 Response: 11645  
 Conc: 23.27 ng/ml



#31 AR-1260-1  
 R.T.: 7.328 min  
 Delta R.T.: 0.000 min  
 Response: 78048  
 Conc: 23.30 ng/ml



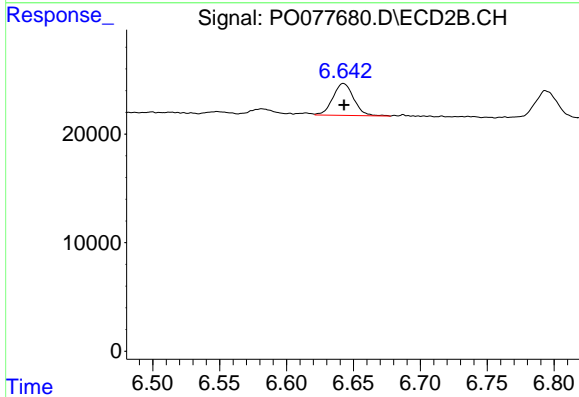
#31 AR-1260-1  
 R.T.: 6.445 min  
 Delta R.T.: 0.000 min  
 Response: 26537  
 Conc: 26.94 ng/ml



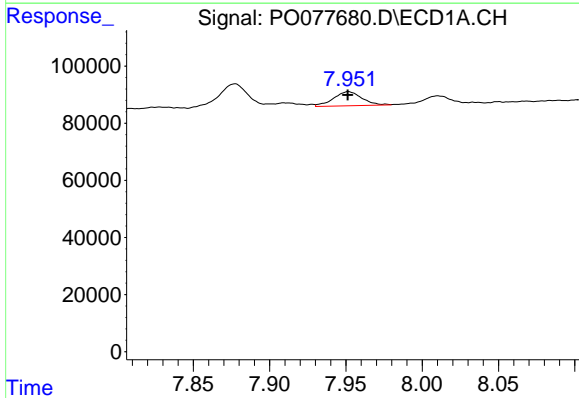
#32 AR-1260-2  
 R.T.: 7.592 min  
 Delta R.T.: 0.000 min  
 Response: 94271  
 Conc: 23.42 ng/ml

**Instrument :**  
 ECD\_O  
**ClientSampleId :**  
 LOD-MDL-SOIL-01-QT2-2021

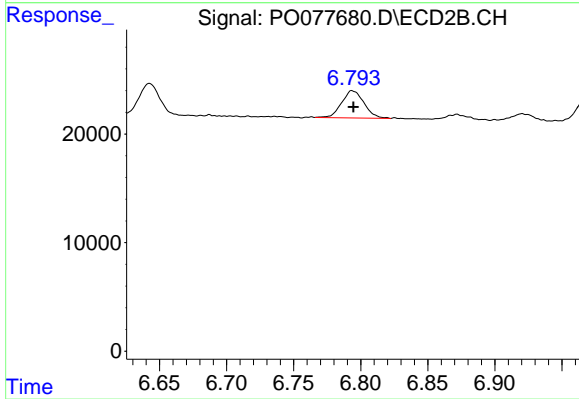
**Manual Integrations**  
**APPROVED**  
 Ankita  
 5/13/2021 10:46:58 AM



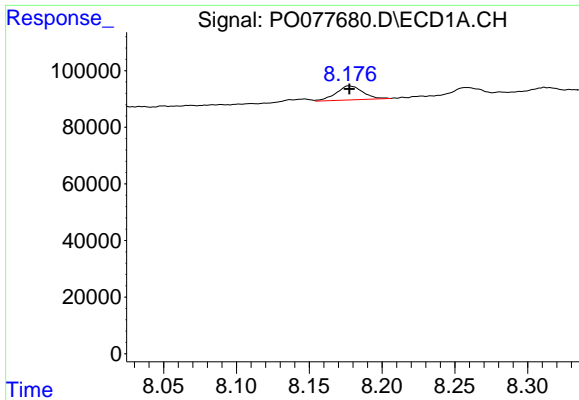
#32 AR-1260-2  
 R.T.: 6.642 min  
 Delta R.T.: 0.000 min  
 Response: 31974  
 Conc: 26.56 ng/ml



#33 AR-1260-3  
 R.T.: 7.952 min  
 Delta R.T.: 0.000 min  
 Response: 64765  
 Conc: 26.05 ng/ml



#33 AR-1260-3  
 R.T.: 6.793 min  
 Delta R.T.: -0.001 min  
 Response: 29348  
 Conc: 26.46 ng/ml

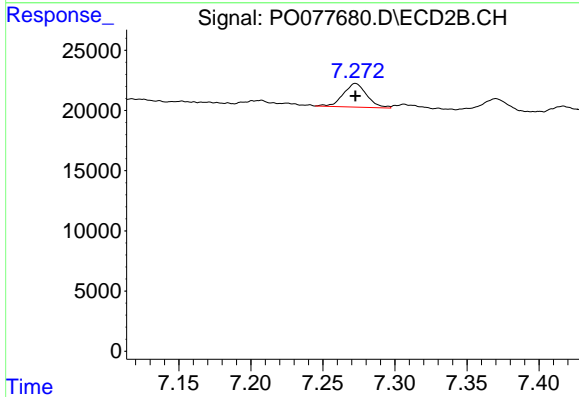


#34 AR-1260-4

R.T.: 8.178 min  
 Delta R.T.: 0.000 min  
 Response: 63584  
 Conc: 21.18 ng/ml

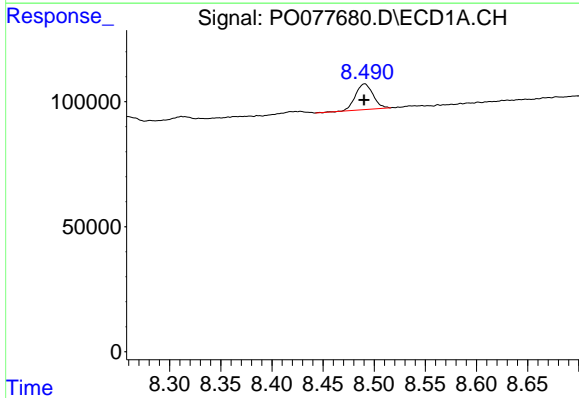
**Instrument :**  
 ECD\_O  
**ClientSampled :**  
 LOD-MDL-SOIL-01-QT2-2021

**Manual Integrations**  
**APPROVED**  
 Ankita  
 5/13/2021 10:46:58 AM



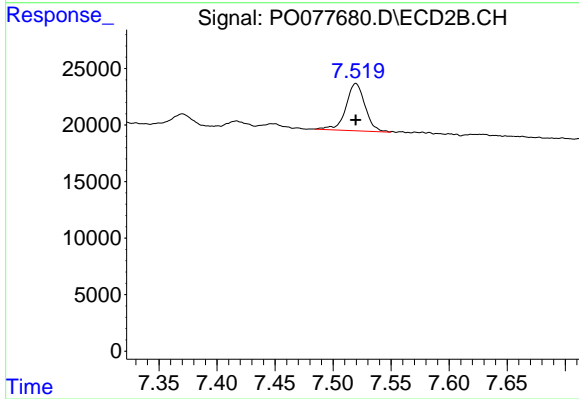
#34 AR-1260-4

R.T.: 7.273 min  
 Delta R.T.: 0.000 min  
 Response: 22156  
 Conc: 27.27 ng/ml



#35 AR-1260-5

R.T.: 8.491 min  
 Delta R.T.: 0.000 min  
 Response: 123504  
 Conc: 21.50 ng/ml



#35 AR-1260-5

R.T.: 7.519 min  
 Delta R.T.: 0.000 min  
 Response: 47685  
 Conc: 24.60 ng/ml m