

Data Path : Z:\pestpcbsrv\HPCHEM1\ECD\_0\Data\P0051219\  
 Data File : P0056171.D  
 Signal(s) : Signal #1: ECD1A.CH Signal #2: ECD2B.CH  
 Acq On : 12 May 2019 20:10  
 Operator : SM/SJ  
 Sample : K2767-15  
 Misc :  
 ALS Vial : 30 Sample Multiplier: 1

**Instrument :**  
 ECD\_0  
**ClientSampleId :**  
 P026-SS012-0002-02

**Manual Integrations**  
**APPROVED**  
 Ankita  
 5/15/2019 5:00:49 PM

Integration File signal 1: autoint1.e  
 Integration File signal 2: autoint2.e  
 Quant Time: May 15 11:52:33 2019  
 Quant Method : Z:\pestpcbsrv\HPCHEM1\ECD\_0\methods\P0050319.M  
 Quant Title : GC EXTRACTABLES  
 QLast Update : Fri May 03 15:20:04 2019  
 Response via : Initial Calibration  
 Integrator: ChemStation 6890 Scale Mode: Small noise peaks clipped

Volume Inj. : 2 µl  
 Signal #1 Phase : ZB-MR1 Signal #2 Phase: ZB-MR2  
 Signal #1 Info : 30Mx0.32mmx 0.50µ Signal #2 Info : 30M x 0.32mm x 0.25µm

	Compound	RT#1	RT#2	Resp#1	Resp#2	ng/ml	ng/ml
-----							
System Monitoring Compounds							
1)	SA Tetrachlo...	4.263	3.580	507791	478531	16.968	16.943
2)	SA Decachlor...	9.851	8.525	368061	266632	9.837m	9.860
Target Compounds							
21)	L5 AR-1248-1	5.446	4.668	146469	85920	161.823	102.465m#
22)	L5 AR-1248-2	5.696	4.883	387522	131613	290.579	119.783 #
23)	L5 AR-1248-3	5.897	4.883	254025	131613	172.018	115.943 #
24)	L5 AR-1248-4	6.299	5.094	212152	198679	121.665	141.492m
25)	L5 AR-1248-5	6.336	5.443	218971	268124	131.094	179.022 #
26)	L6 AR-1254-1	6.299	5.443	212152	268124	101.033	100.184
27)	L6 AR-1254-2	6.491	5.589	505411	235444	152.286	96.387 #
28)	L6 AR-1254-3	6.855	5.989	586670	421409	161.372	106.212 #
29)	L6 AR-1254-4	7.138	6.217	350530	232137	128.838	86.580 #
30)	L6 AR-1254-5	7.583	6.630	78404	504640	27.355	139.454m#
31)	L7 AR-1260-1	7.013	6.118	162635	240055	75.311m	108.958 #
32)	L7 AR-1260-2	7.271	6.303	304412	349888	116.237m	114.583
33)	L7 AR-1260-3	7.622	6.456	121008	249014	60.504m	99.924 #
34)	L7 AR-1260-4	7.845	6.963	228433	136830	98.777m	66.311m#
35)	L7 AR-1260-5	8.161	7.165	156640	158093	36.923	31.478m
-----							

(f)=RT Delta > 1/2 Window (#)=Amounts differ by > 25% (m)=manual int.

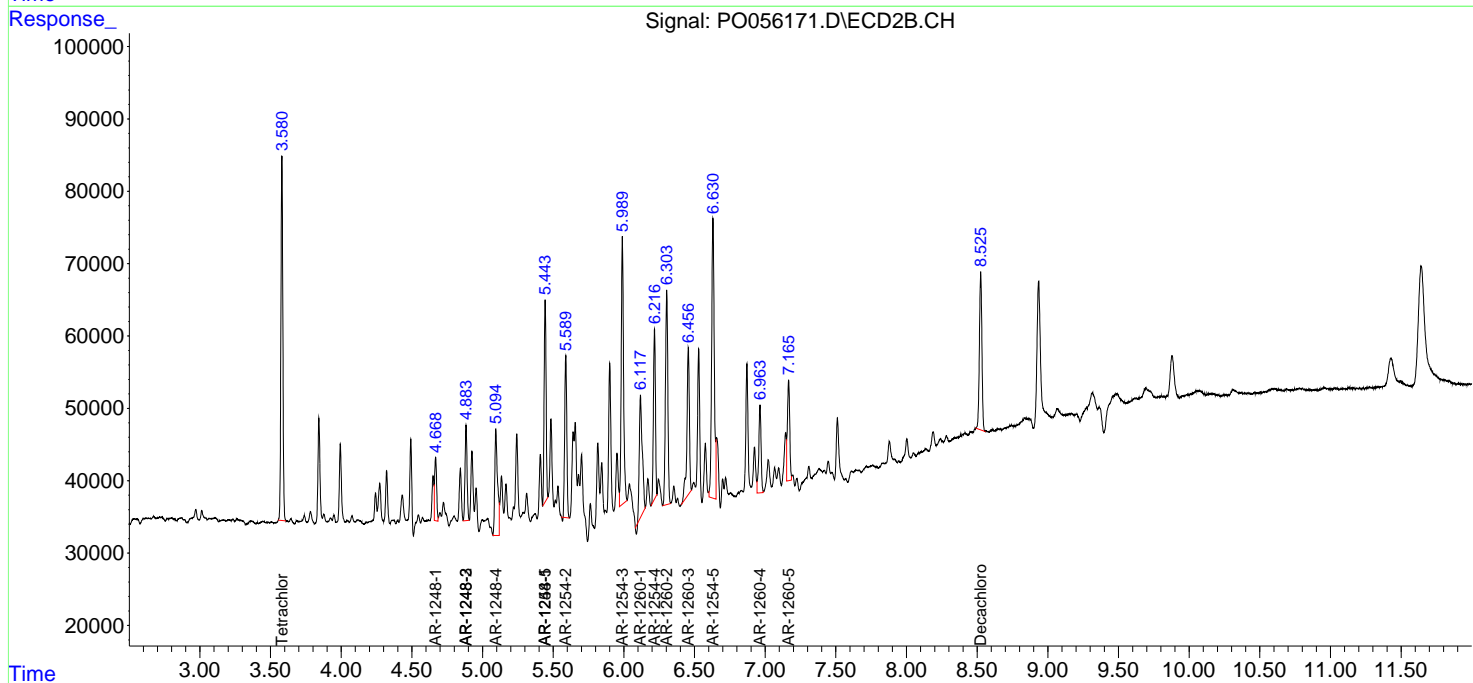
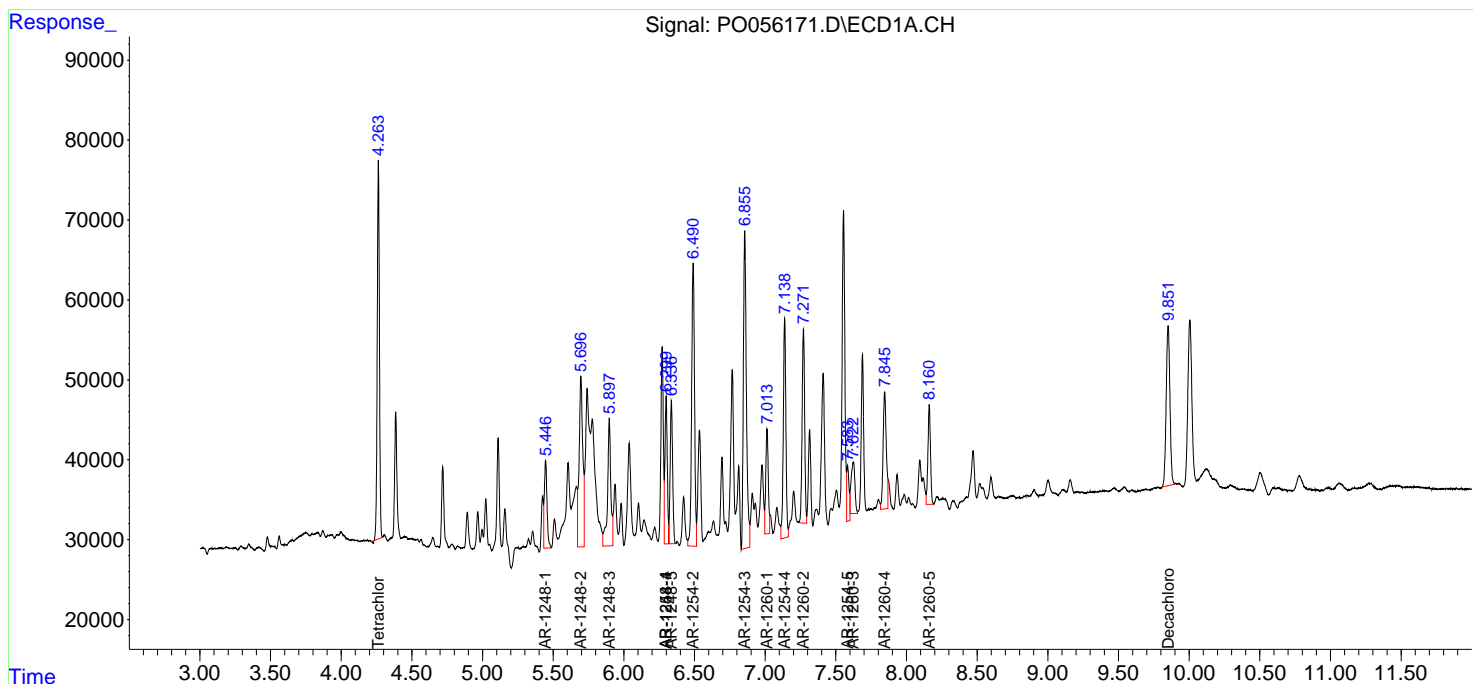
Data Path : Z:\pestpcbsrv\HPCHEM1\ECD\_0\Data\P0051219\  
 Data File : P0056171.D  
 Signal(s) : Signal #1: ECD1A.CH Signal #2: ECD2B.CH  
 Acq On : 12 May 2019 20:10  
 Operator : SM/SJ  
 Sample : K2767-15  
 Misc :  
 ALS Vial : 30 Sample Multiplier: 1

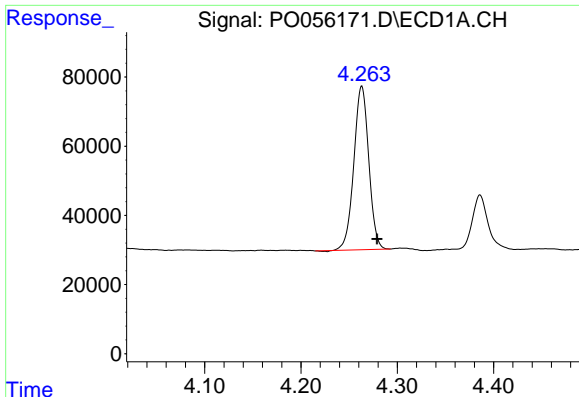
Instrument :  
 ECD\_O  
 ClientSampled :  
 P026-SS012-0002-02

Manual Integrations  
**APPROVED**  
 Ankita  
 5/15/2019 5:00:49 PM

Integration File signal 1: autoint1.e  
 Integration File signal 2: autoint2.e  
 Quant Time: May 15 11:52:33 2019  
 Quant Method : Z:\pestpcbsrv\HPCHEM1\ECD\_0\methods\P0050319.M  
 Quant Title : GC EXTRACTABLES  
 QLast Update : Fri May 03 15:20:04 2019  
 Response via : Initial Calibration  
 Integrator: ChemStation 6890 Scale Mode: Small noise peaks clipped

Volume Inj. : 2 µl  
 Signal #1 Phase : ZB-MR1 Signal #2 Phase: ZB-MR2  
 Signal #1 Info : 30Mx0.32mmx 0.50µ Signal #2 Info : 30M x 0.32mm x 0.25µm



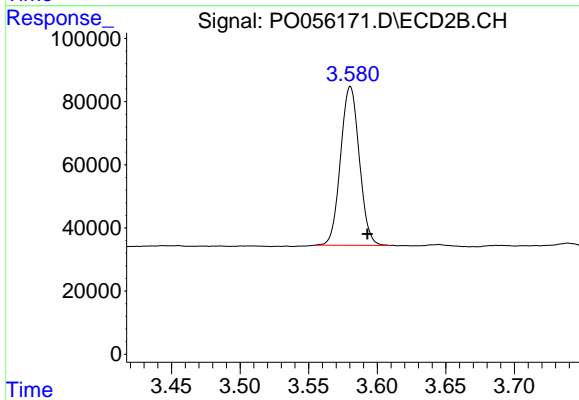


#1 Tetrachloro-m-xylene  
 R.T.: 4.263 min  
 Delta R.T.: -0.016 min  
 Response: 507791  
 Conc: 16.97 ng/ml

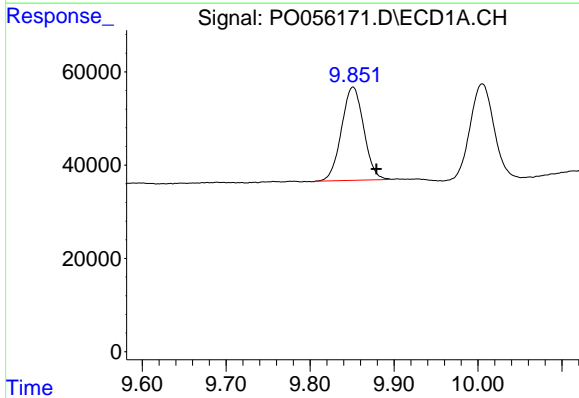
Instrument :  
 ECD\_O  
 ClientSampled :  
 P026-SS012-0002-02

Manual Integrations  
 APPROVED

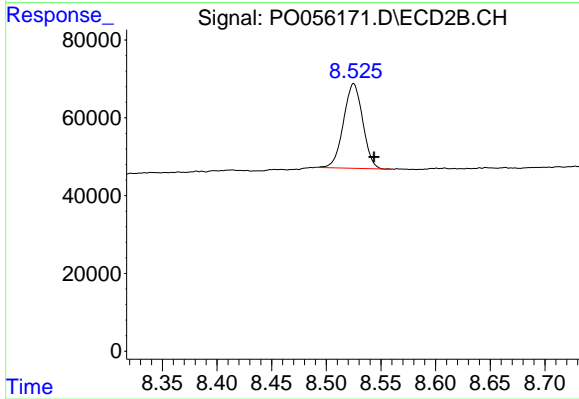
Ankita  
 5/15/2019 5:00:49 PM



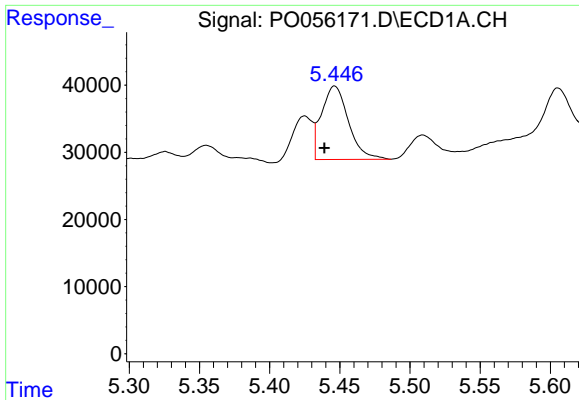
#1 Tetrachloro-m-xylene  
 R.T.: 3.580 min  
 Delta R.T.: -0.012 min  
 Response: 478531  
 Conc: 16.94 ng/ml



#2 Decachlorobiphenyl  
 R.T.: 9.851 min  
 Delta R.T.: -0.028 min  
 Response: 368061  
 Conc: 9.84 ng/ml m



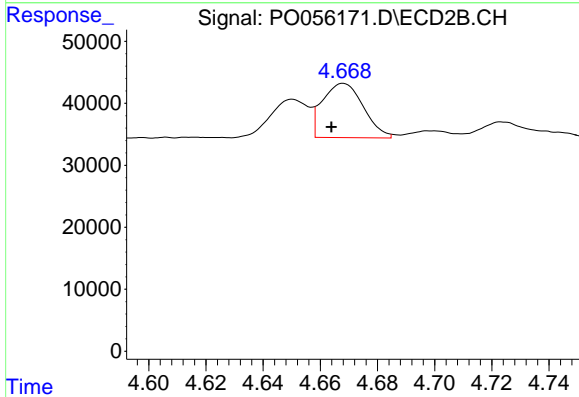
#2 Decachlorobiphenyl  
 R.T.: 8.525 min  
 Delta R.T.: -0.019 min  
 Response: 266632  
 Conc: 9.86 ng/ml



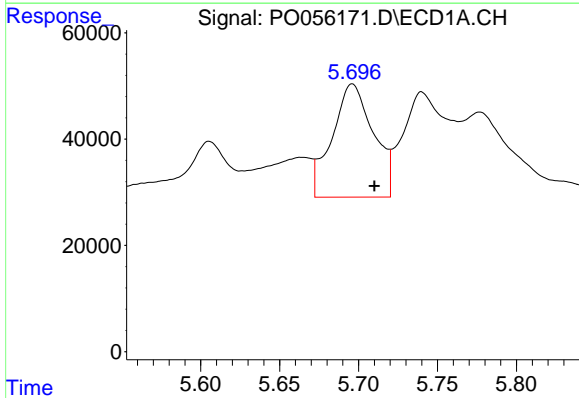
#21 AR-1248-1  
 R.T.: 5.446 min  
 Delta R.T.: 0.007 min  
 Response: 146469  
 Conc: 161.82 ng/ml

**Instrument :**  
 ECD\_O  
**ClientSampled :**  
 P026-SS012-0002-02

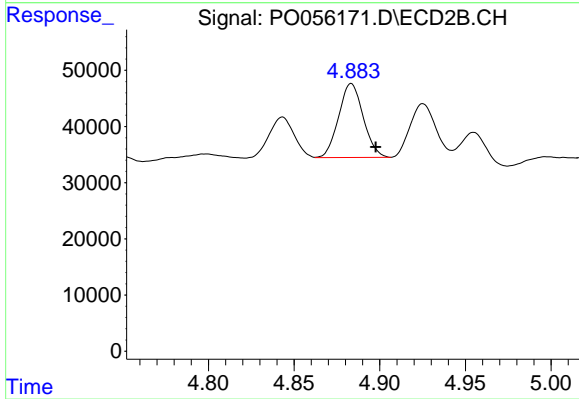
**Manual Integrations**  
**APPROVED**  
 Ankita  
 5/15/2019 5:00:49 PM



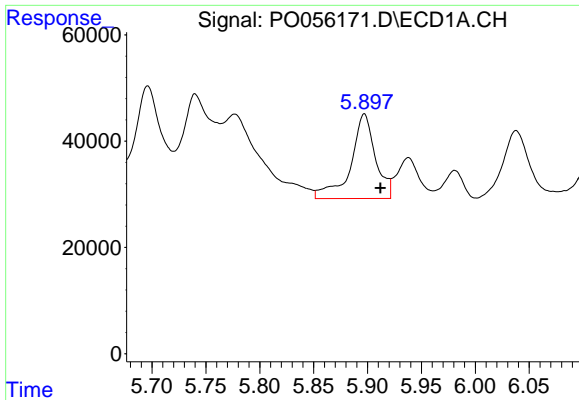
#21 AR-1248-1  
 R.T.: 4.668 min  
 Delta R.T.: 0.004 min  
 Response: 85920  
 Conc: 102.47 ng/ml m



#22 AR-1248-2  
 R.T.: 5.696 min  
 Delta R.T.: -0.014 min  
 Response: 387522  
 Conc: 290.58 ng/ml



#22 AR-1248-2  
 R.T.: 4.883 min  
 Delta R.T.: -0.014 min  
 Response: 131613  
 Conc: 119.78 ng/ml

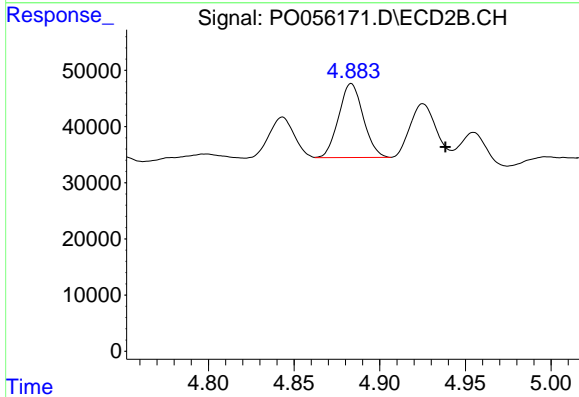


#23 AR-1248-3

R.T.: 5.897 min  
 Delta R.T.: -0.015 min  
 Response: 254025  
 Conc: 172.02 ng/ml

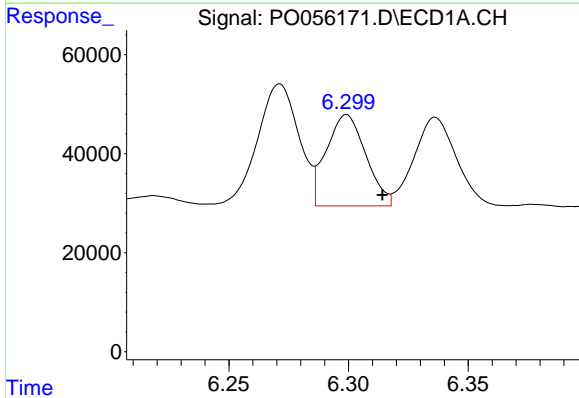
**Instrument :**  
 ECD\_O  
**ClientSampled :**  
 P026-SS012-0002-02

**Manual Integrations**  
**APPROVED**  
 Ankita  
 5/15/2019 5:00:49 PM



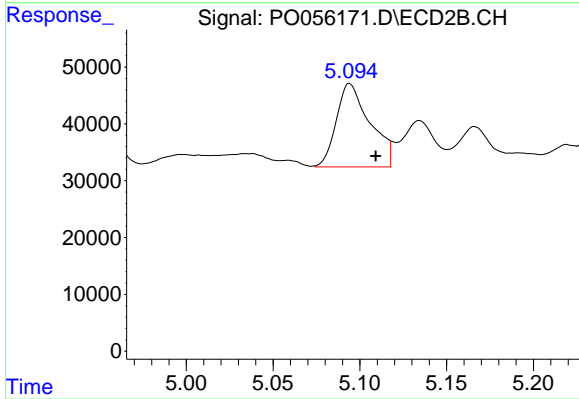
#23 AR-1248-3

R.T.: 4.883 min  
 Delta R.T.: -0.055 min  
 Response: 131613  
 Conc: 115.94 ng/ml



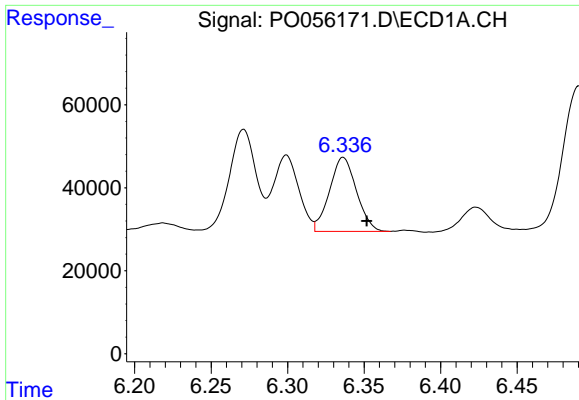
#24 AR-1248-4

R.T.: 6.299 min  
 Delta R.T.: -0.015 min  
 Response: 212152  
 Conc: 121.67 ng/ml



#24 AR-1248-4

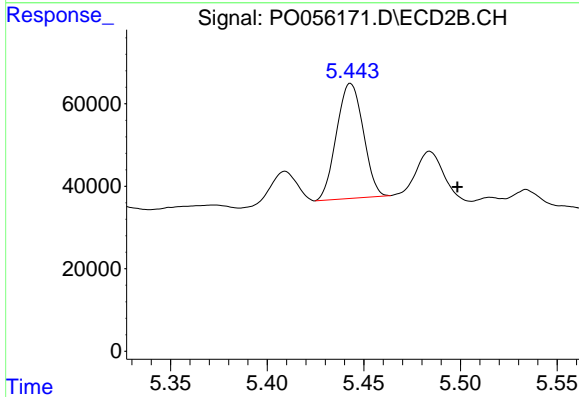
R.T.: 5.094 min  
 Delta R.T.: -0.016 min  
 Response: 198679  
 Conc: 141.49 ng/ml m



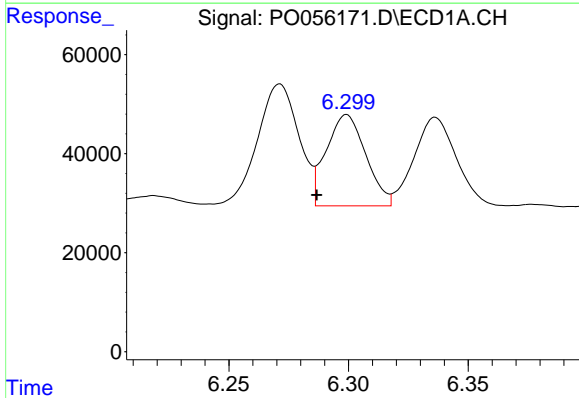
#25 AR-1248-5  
 R.T.: 6.336 min  
 Delta R.T.: -0.015 min  
 Response: 218971  
 Conc: 131.09 ng/ml

**Instrument :**  
 ECD\_O  
**ClientSampled :**  
 P026-SS012-0002-02

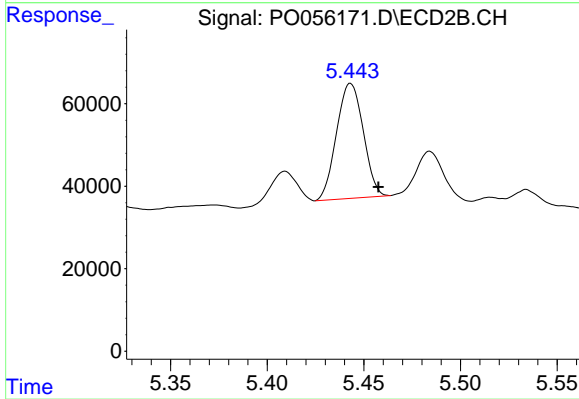
**Manual Integrations**  
**APPROVED**  
 Ankita  
 5/15/2019 5:00:49 PM



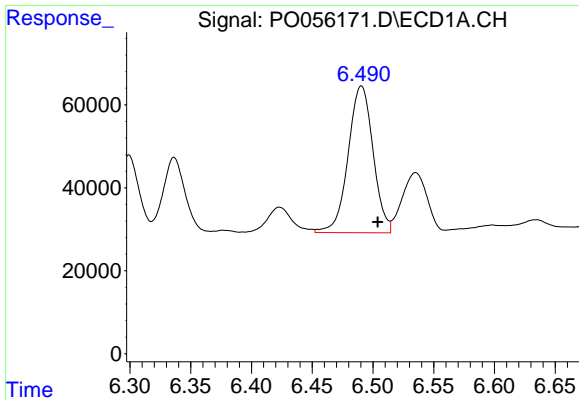
#25 AR-1248-5  
 R.T.: 5.443 min  
 Delta R.T.: -0.055 min  
 Response: 268124  
 Conc: 179.02 ng/ml



#26 AR-1254-1  
 R.T.: 6.299 min  
 Delta R.T.: 0.012 min  
 Response: 212152  
 Conc: 101.03 ng/ml



#26 AR-1254-1  
 R.T.: 5.443 min  
 Delta R.T.: -0.014 min  
 Response: 268124  
 Conc: 100.18 ng/ml



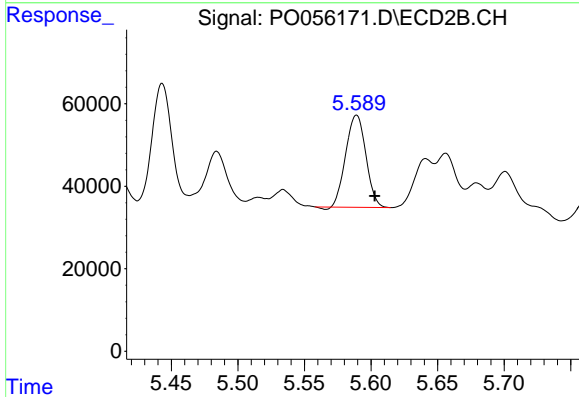
#27 AR-1254-2

R.T.: 6.491 min  
 Delta R.T.: -0.013 min  
 Response: 505411  
 Conc: 152.29 ng/ml

Instrument :  
 ECD\_O  
 ClientSampled :  
 P026-SS012-0002-02

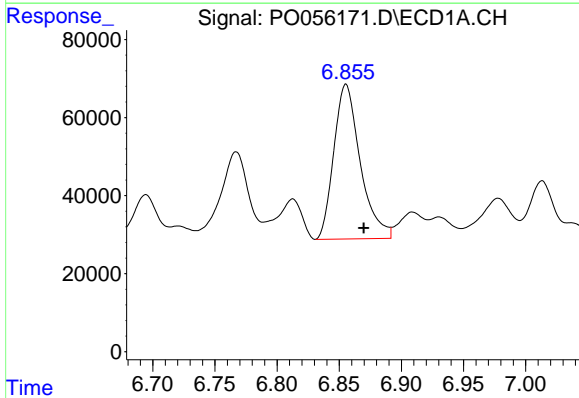
Manual Integrations  
 APPROVED

Ankita  
 5/15/2019 5:00:49 PM



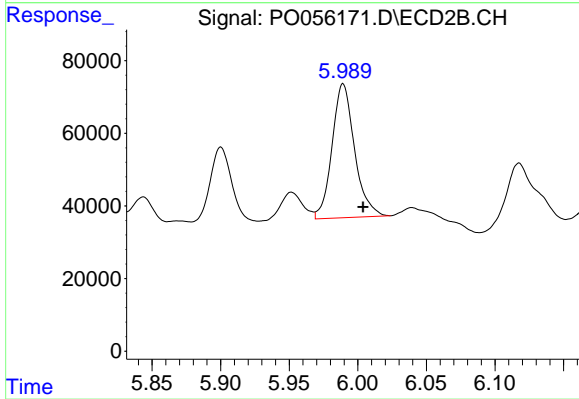
#27 AR-1254-2

R.T.: 5.589 min  
 Delta R.T.: -0.013 min  
 Response: 235444  
 Conc: 96.39 ng/ml



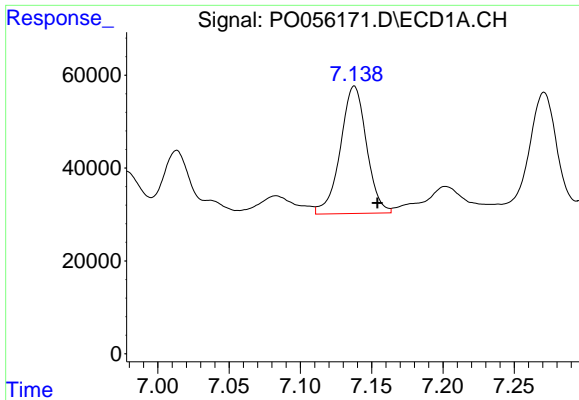
#28 AR-1254-3

R.T.: 6.855 min  
 Delta R.T.: -0.014 min  
 Response: 586670  
 Conc: 161.37 ng/ml



#28 AR-1254-3

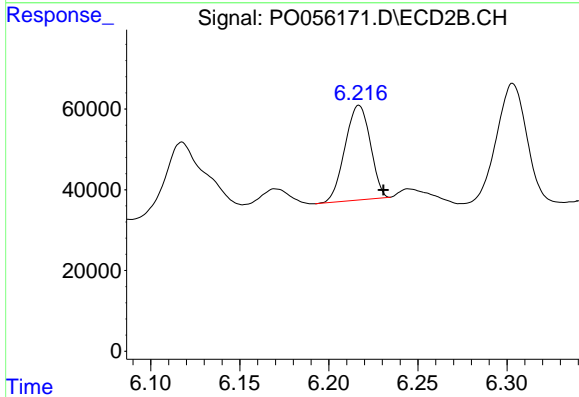
R.T.: 5.989 min  
 Delta R.T.: -0.015 min  
 Response: 421409  
 Conc: 106.21 ng/ml



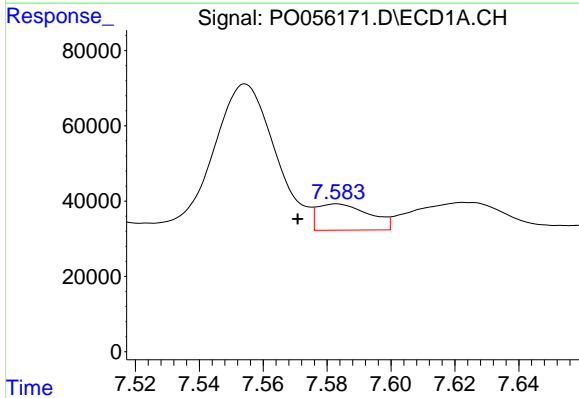
#29 AR-1254-4  
 R.T.: 7.138 min  
 Delta R.T.: -0.016 min  
 Response: 350530  
 Conc: 128.84 ng/ml

**Instrument :**  
 ECD\_O  
**ClientSampled :**  
 P026-SS012-0002-02

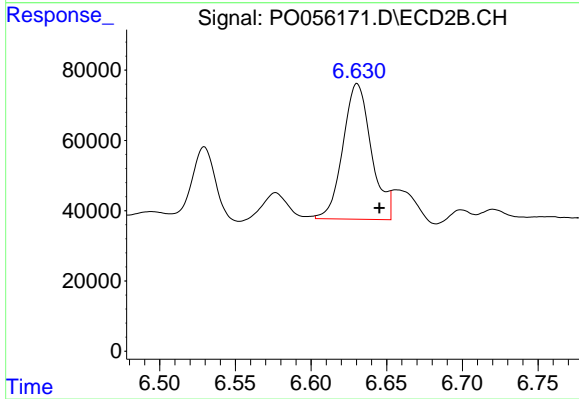
**Manual Integrations**  
**APPROVED**  
 Ankita  
 5/15/2019 5:00:49 PM



#29 AR-1254-4  
 R.T.: 6.217 min  
 Delta R.T.: -0.014 min  
 Response: 232137  
 Conc: 86.58 ng/ml

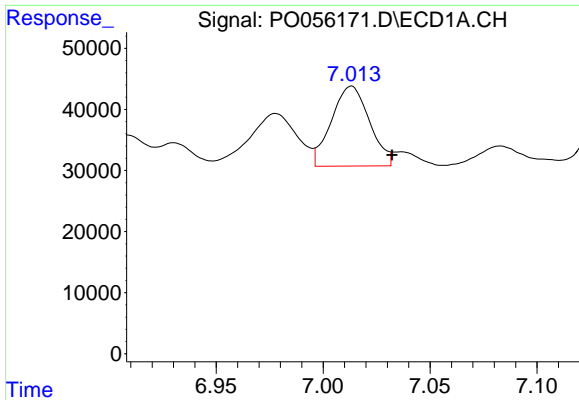


#30 AR-1254-5  
 R.T.: 7.583 min  
 Delta R.T.: 0.012 min  
 Response: 78404  
 Conc: 27.36 ng/ml



#30 AR-1254-5  
 R.T.: 6.630 min  
 Delta R.T.: -0.015 min  
 Response: 504640  
 Conc: 139.45 ng/ml m

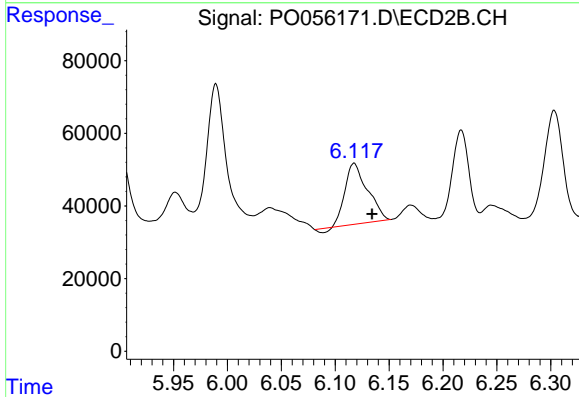




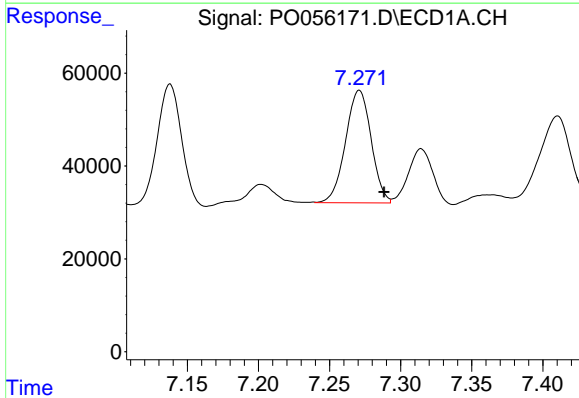
#31 AR-1260-1  
 R.T.: 7.013 min  
 Delta R.T.: -0.019 min  
 Response: 162635  
 Conc: 75.31 ng/ml m

**Instrument :**  
 ECD\_O  
**ClientSampled :**  
 P026-SS012-0002-02

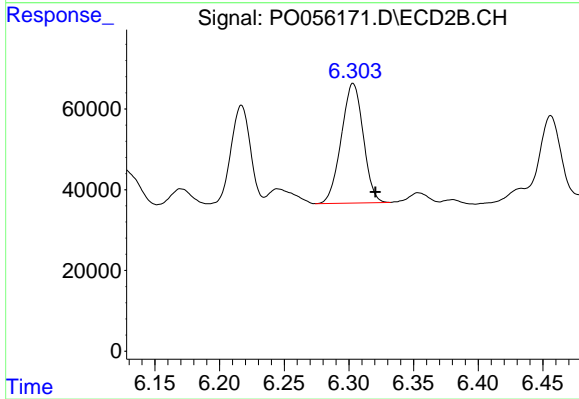
**Manual Integrations**  
**APPROVED**  
 Ankita  
 5/15/2019 5:00:49 PM



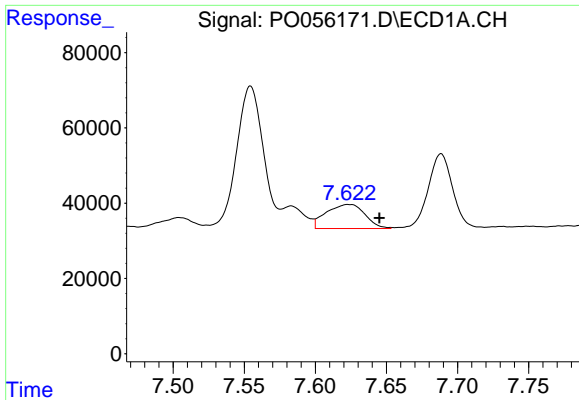
#31 AR-1260-1  
 R.T.: 6.118 min  
 Delta R.T.: -0.017 min  
 Response: 240055  
 Conc: 108.96 ng/ml



#32 AR-1260-2  
 R.T.: 7.271 min  
 Delta R.T.: -0.018 min  
 Response: 304412  
 Conc: 116.24 ng/ml m



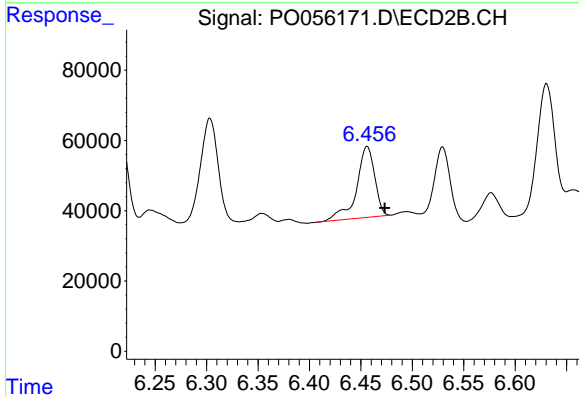
#32 AR-1260-2  
 R.T.: 6.303 min  
 Delta R.T.: -0.017 min  
 Response: 349888  
 Conc: 114.58 ng/ml



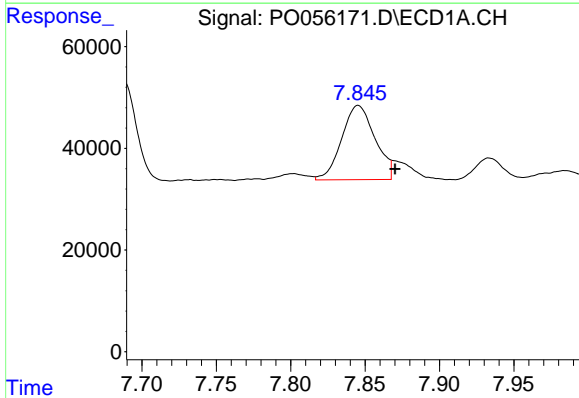
#33 AR-1260-3  
 R.T.: 7.622 min  
 Delta R.T.: -0.023 min  
 Response: 121008  
 Conc: 60.50 ng/ml m

**Instrument :**  
 ECD\_O  
**ClientSampled :**  
 P026-SS012-0002-02

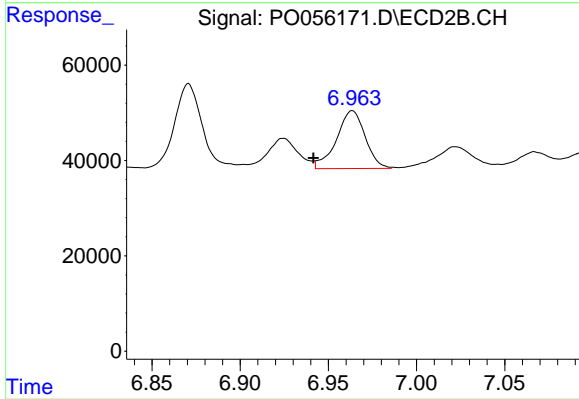
**Manual Integrations**  
**APPROVED**  
 Ankita  
 5/15/2019 5:00:49 PM



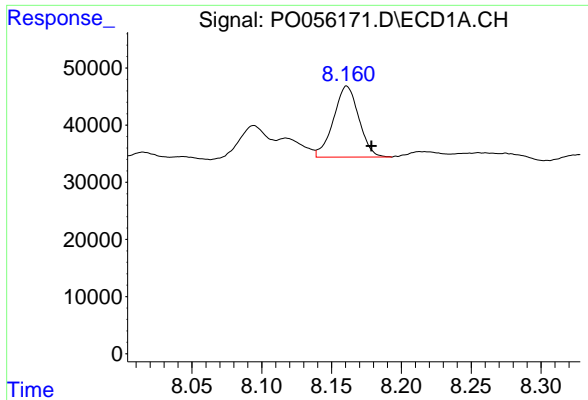
#33 AR-1260-3  
 R.T.: 6.456 min  
 Delta R.T.: -0.017 min  
 Response: 249014  
 Conc: 99.92 ng/ml



#34 AR-1260-4  
 R.T.: 7.845 min  
 Delta R.T.: -0.025 min  
 Response: 228433  
 Conc: 98.78 ng/ml m



#34 AR-1260-4  
 R.T.: 6.963 min  
 Delta R.T.: 0.022 min  
 Response: 136830  
 Conc: 66.31 ng/ml m



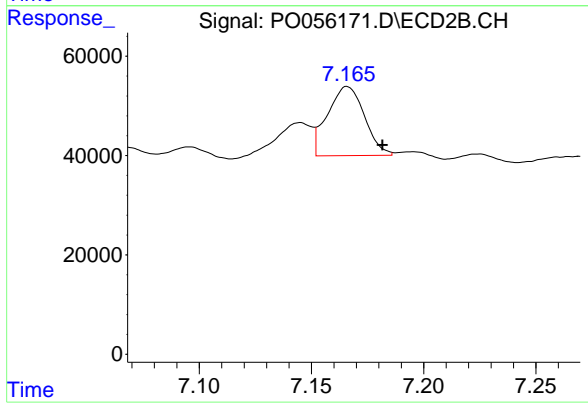
#35 AR-1260-5

R.T.: 8.161 min  
 Delta R.T.: -0.018 min  
 Response: 156640  
 Conc: 36.92 ng/ml

Instrument :  
 ECD\_O  
 ClientSampleId :  
 P026-SS012-0002-02

Manual Integrations  
 APPROVED

Ankita  
 5/15/2019 5:00:49 PM



#35 AR-1260-5

R.T.: 7.165 min  
 Delta R.T.: -0.016 min  
 Response: 158093  
 Conc: 31.48 ng/ml m