

Data Path : Z:\pestpcbsrv\HPCHEM1\ECD_0\Data\P0051225\
 Data File : P0111022.D
 Signal(s) : Signal #1: ECD1A.ch Signal #2: ECD2B.ch
 Acq On : 12 May 2025 18:45
 Operator : YP/AJ
 Sample : AR1248CCC500
 Misc :
 ALS Vial : 5 Sample Multiplier: 1

Instrument :
 ECD_0
 ClientSampleId :
 AR1248CCC500

Integration File signal 1: autoint1.e
 Integration File signal 2: autoint2.e
 Quant Time: May 13 01:55:00 2025
 Quant Method : Z:\pestpcbsrv\HPCHEM1\ECD_0\methods\P0050225.M
 Quant Title : GC EXTRACTABLES
 QLast Update : Fri May 02 23:47:49 2025
 Response via : Initial Calibration
 Integrator: ChemStation

Volume Inj. : 2 µl
 Signal #1 Phase : ZB-MR1 Signal #2 Phase: ZB-MR2
 Signal #1 Info : 30Mx0.32mmx 0.50µ Signal #2 Info : 30M x 0.32mm x 0.25µm

Compound	RT#1	RT#2	Resp#1	Resp#2	ng/ml	ng/ml

System Monitoring Compounds						
1) SA Tetrachlo...	3.685	3.681	322.7E6	289.1E6	56.405	59.694
2) SA Decachlor...	8.725	8.674	257.6E6	91885938	42.220	54.459 #
Target Compounds						
3) L1 AR-1016-1	4.775	4.760	70687917	59112390	319.834	372.063
4) L1 AR-1016-2	4.794	4.778	73768851	62499608	237.832	273.440
5) L1 AR-1016-3	4.850	4.955	44740930	40682297	195.630	333.636 #
6) L1 AR-1016-4	4.971	4.995	48524098	81689183	290.228	810.722 #
7) L1 AR-1016-5	5.227	5.208	117.1E6	100.8E6	657.370	766.966
8) L2 AR-1221-1	3.895	3.888	1903623	843445	21.864	12.671 #
9) L2 AR-1221-2	3.986	3.979	8526455	5774425	125.924	112.493
10) L2 AR-1221-3	4.059	4.051	7356711	5904304	37.198	38.581
11) L3 AR-1232-1	4.059	4.051	7356711	5904304	47.900	50.266
12) L3 AR-1232-2	4.551	4.778	30659016	62499608	372.162	543.310 #
13) L3 AR-1232-3	4.794	4.955	73768851	40682297	463.707	674.818 #
14) L3 AR-1232-4	4.971	5.038	48524098	86383656	576.497	1550.524 #
15) L3 AR-1232-5	5.013	5.208	93621469	100.8E6	1590.245	1712.082
16) L4 AR-1242-1	4.775	4.760	70687917	59112390	384.325	446.716
17) L4 AR-1242-2	4.794	4.778	73768851	62499608	286.365	328.817
18) L4 AR-1242-3	4.850	4.955	44740930	40682297	245.681	401.519 #
19) L4 AR-1242-4	4.971	5.038	48524098	86383656	347.462	832.932 #
20) L4 AR-1242-5	5.623	5.558	119.8E6	137.8E6	768.730	1088.470 #
21) L5 AR-1248-1	4.775	4.760	70687917	59112390	538.114	613.358
22) L5 AR-1248-2	5.013	4.995	93621469	81689183	534.270	604.559
23) L5 AR-1248-3	5.227	5.038	117.1E6	86383656	531.008	595.163
24) L5 AR-1248-4	5.581	5.208	165.3E6	100.8E6	504.415	601.621
25) L5 AR-1248-5	5.623	5.600	119.8E6	99185576	513.352	590.817
26) L6 AR-1254-1	5.581	5.558	165.3E6	137.8E6	489.686	548.804
27) L6 AR-1254-2	5.731	5.706	51951980	44191693	180.576	202.541
28) L6 AR-1254-3	6.136	6.108	75898217	60975009	165.971	182.445
29) L6 AR-1254-4	6.365	6.336	57002367	40845752	187.000	210.370
30) L6 AR-1254-5	6.784	6.752	16704379	12545482	39.594	46.762
31) L7 AR-1260-1	6.280	6.252	39172828	29768416	117.769	134.839
32) L7 AR-1260-2	6.455	6.426	7910680	4947867	19.070	19.235
33) L7 AR-1260-3	6.853	6.577	2925590	7134208	8.305	30.600 #
34) L7 AR-1260-4	7.082	7.049	1283018	660425	4.217	3.627
35) L7 AR-1260-5	7.325	7.289	2796152	1828796	3.807	4.651
36) L8 AR-1262-1	6.853	6.821	2925590	2452395	6.354	8.684 #
37) L8 AR-1262-2	7.325	7.289	2796152	1828796	3.555	4.163
38) L8 AR-1262-3	7.611	7.570	654396	657048	1.959	4.047 #
39) L8 AR-1262-4	7.670	7.633	2179758	1623303	3.768	5.576 #
40) L8 AR-1262-5	8.168	8.130	702404	223556	2.633	2.267
41) L9 AR-1268-1	7.611	7.570	654396	657048	0.735	1.525 #

Data Path : Z:\pestpcbsrv\HPCHEM1\ECD_O\Data\P0051225\
 Data File : P0111022.D
 Signal(s) : Signal #1: ECD1A.ch Signal #2: ECD2B.ch
 Acq On : 12 May 2025 18:45
 Operator : YP/AJ
 Sample : AR1248CCC500
 Misc :
 ALS Vial : 5 Sample Multiplier: 1

Instrument :
 ECD_O
ClientSampleId :
 AR1248CCC500

Integration File signal 1: autoint1.e
 Integration File signal 2: autoint2.e
 Quant Time: May 13 01:55:00 2025
 Quant Method : Z:\pestpcbsrv\HPCHEM1\ECD_O\methods\P0050225.M
 Quant Title : GC EXTRACTABLES
 QLast Update : Fri May 02 23:47:49 2025
 Response via : Initial Calibration
 Integrator: ChemStation

Volume Inj. : 2 µl
 Signal #1 Phase : ZB-MR1 Signal #2 Phase: ZB-MR2
 Signal #1 Info : 30Mx0.32mmx 0.50µ Signal #2 Info : 30M x 0.32mm x 0.25µm

	Compound	RT#1	RT#2	Resp#1	Resp#2	ng/ml	ng/ml
42)	L9 AR-1268-2	7.670	7.633	2179758	1623303	2.716	4.229 #
43)	L9 AR-1268-3	7.881	7.839	1193492	728064	1.739	2.563 #
44)	L9 AR-1268-4	8.168	8.130	702404	223556	2.527	2.147
45)	L9 AR-1268-5	8.465	8.420	2403879	761152	1.176	1.254

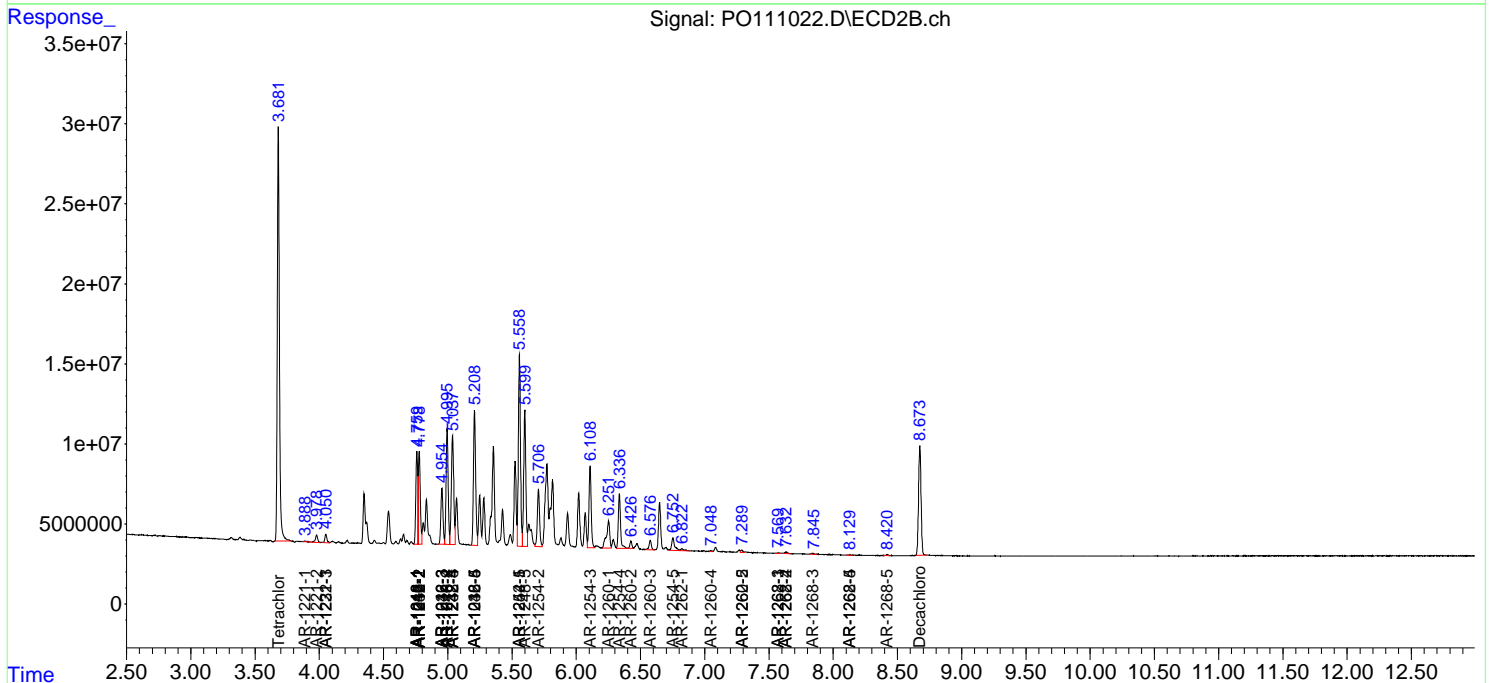
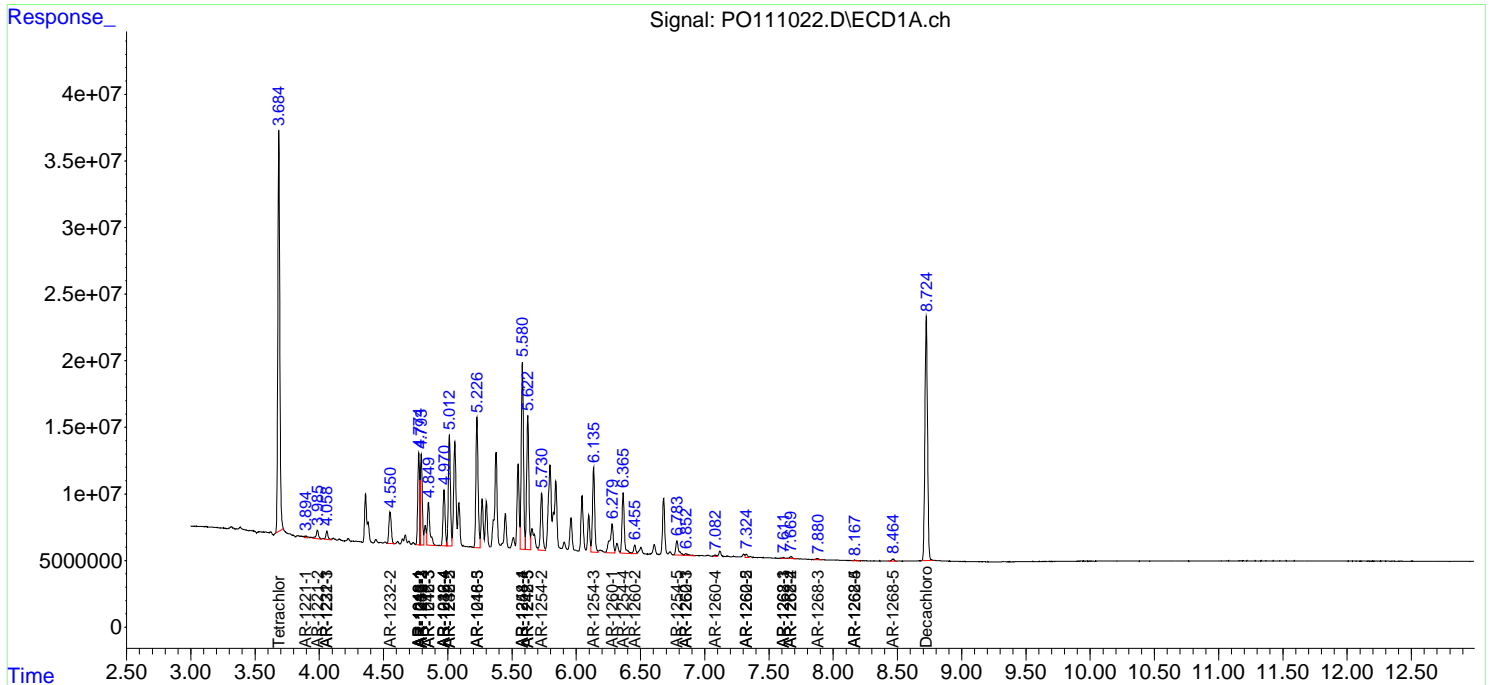
(f)=RT Delta > 1/2 Window (#)=Amounts differ by > 25% (m)=manual int.

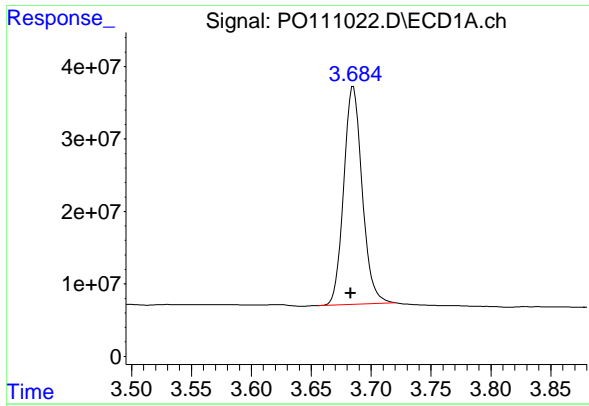
Data Path : Z:\pestpcbsrv\HPCHEM1\ECD_O\Data\PO051225\
 Data File : PO111022.D
 Signal(s) : Signal #1: ECD1A.ch Signal #2: ECD2B.ch
 Acq On : 12 May 2025 18:45
 Operator : YP/AJ
 Sample : AR1248CCC500
 Misc :
 ALS Vial : 5 Sample Multiplier: 1

Instrument :
 ECD_O
 ClientSampleId :
 AR1248CCC500

Integration File signal 1: autoint1.e
 Integration File signal 2: autoint2.e
 Quant Time: May 13 01:55:00 2025
 Quant Method : Z:\pestpcbsrv\HPCHEM1\ECD_O\methods\PO050225.M
 Quant Title : GC EXTRACTABLES
 QLast Update : Fri May 02 23:47:49 2025
 Response via : Initial Calibration
 Integrator: ChemStation

Volume Inj. : 2 µl
 Signal #1 Phase : ZB-MR1 Signal #2 Phase: ZB-MR2
 Signal #1 Info : 30Mx0.32mmx 0.50µ Signal #2 Info : 30M x 0.32mm x 0.25µm

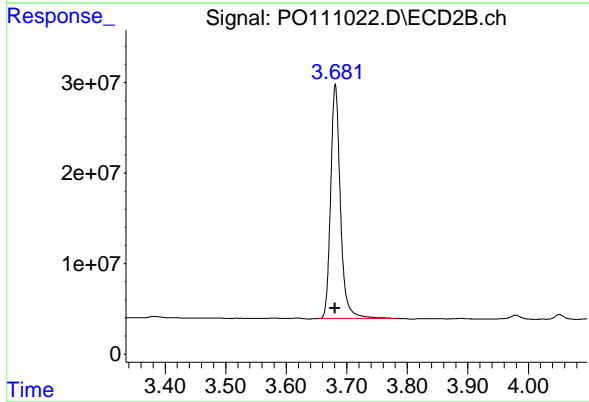




#1 Tetrachloro-m-xylene

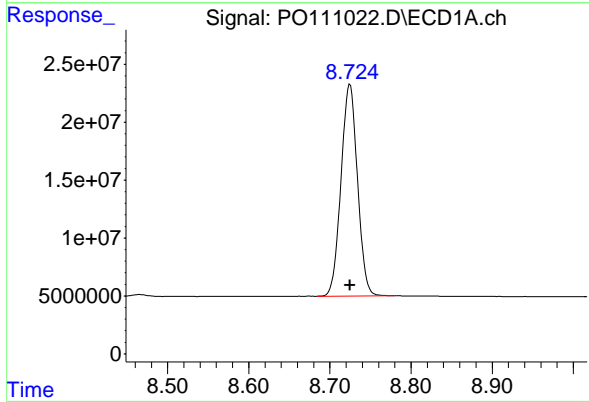
R.T.: 3.685 min
 Delta R.T.: 0.002 min
 Response: 322681943
 Conc: 56.41 ng/ml

Instrument :
 ECD_O
 ClientSampleId :
 AR1248CCC500



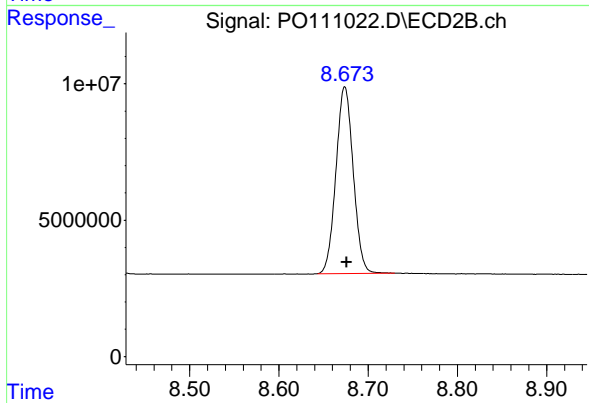
#1 Tetrachloro-m-xylene

R.T.: 3.681 min
 Delta R.T.: 0.000 min
 Response: 289106207
 Conc: 59.69 ng/ml



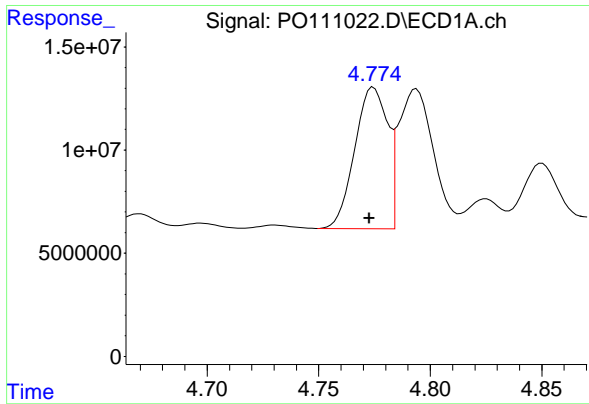
#2 Decachlorobiphenyl

R.T.: 8.725 min
 Delta R.T.: 0.000 min
 Response: 257645706
 Conc: 42.22 ng/ml



#2 Decachlorobiphenyl

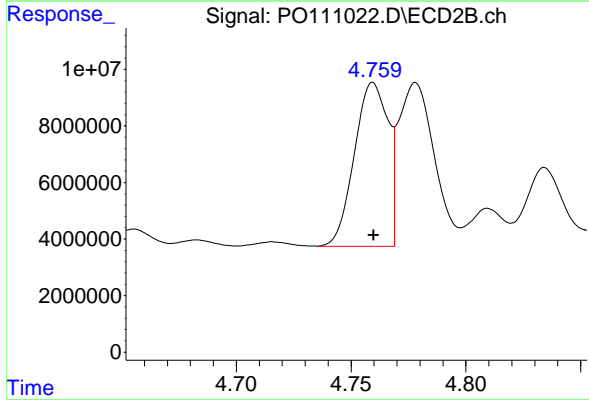
R.T.: 8.674 min
 Delta R.T.: -0.002 min
 Response: 91885938
 Conc: 54.46 ng/ml



#3 AR-1016-1

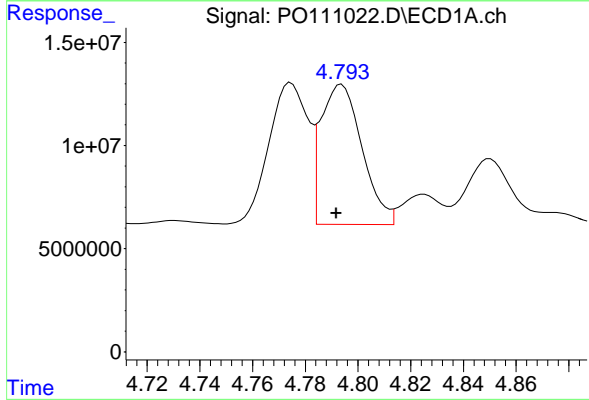
R.T.: 4.775 min
 Delta R.T.: 0.002 min
 Response: 70687917
 Conc: 319.83 ng/ml

Instrument :
 ECD_O
 ClientSampleId :
 AR1248CCC500



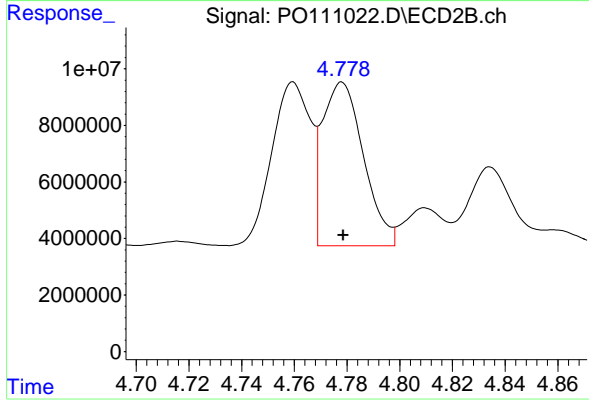
#3 AR-1016-1

R.T.: 4.760 min
 Delta R.T.: 0.000 min
 Response: 59112390
 Conc: 372.06 ng/ml



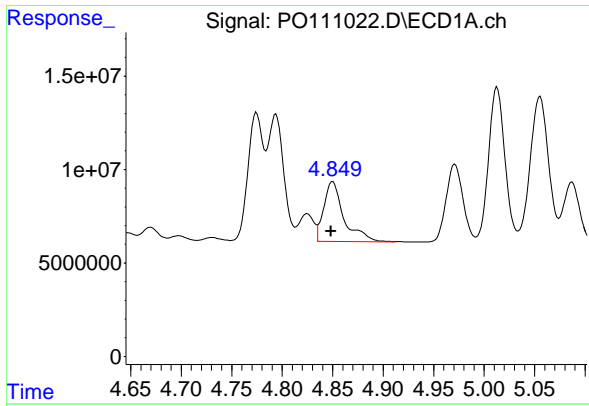
#4 AR-1016-2

R.T.: 4.794 min
 Delta R.T.: 0.002 min
 Response: 73768851
 Conc: 237.83 ng/ml



#4 AR-1016-2

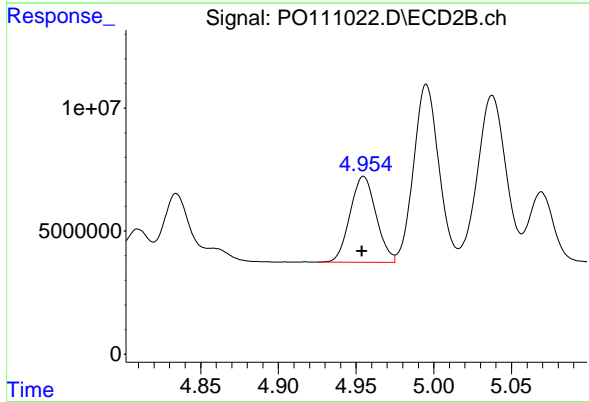
R.T.: 4.778 min
 Delta R.T.: 0.000 min
 Response: 62499608
 Conc: 273.44 ng/ml



#5 AR-1016-3

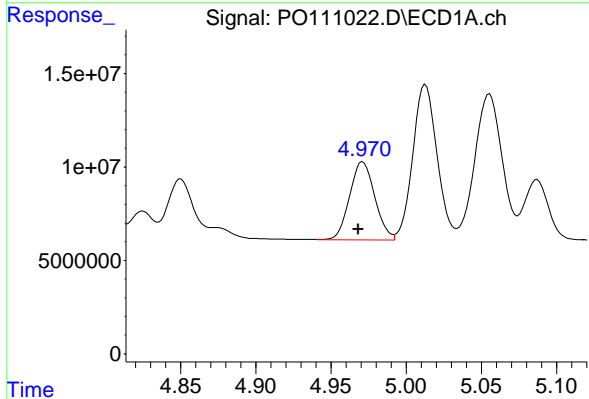
R.T.: 4.850 min
 Delta R.T.: 0.002 min
 Response: 44740930
 Conc: 195.63 ng/ml

Instrument :
 ECD_O
 ClientSampleId :
 AR1248CCC500



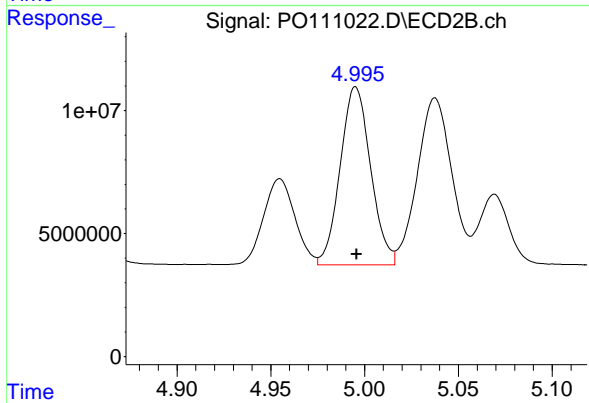
#5 AR-1016-3

R.T.: 4.955 min
 Delta R.T.: 0.000 min
 Response: 40682297
 Conc: 333.64 ng/ml



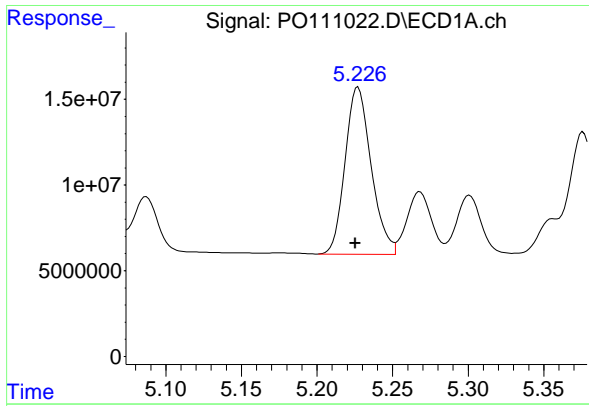
#6 AR-1016-4

R.T.: 4.971 min
 Delta R.T.: 0.003 min
 Response: 48524098
 Conc: 290.23 ng/ml



#6 AR-1016-4

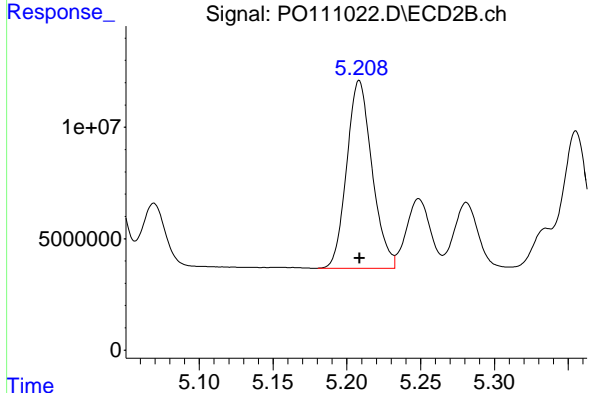
R.T.: 4.995 min
 Delta R.T.: 0.000 min
 Response: 81689183
 Conc: 810.72 ng/ml



#7 AR-1016-5

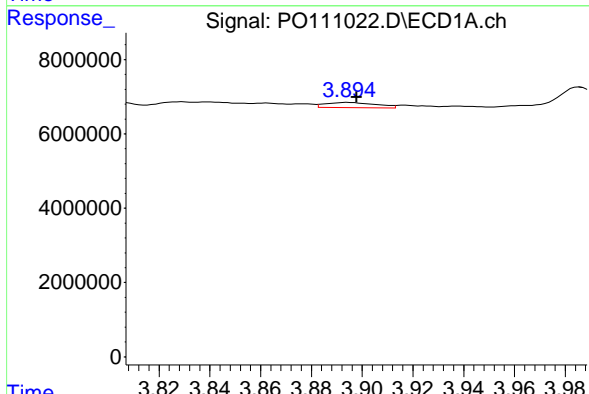
R.T.: 5.227 min
 Delta R.T.: 0.002 min
 Response: 117070183
 Conc: 657.37 ng/ml

Instrument :
 ECD_O
 ClientSampleId :
 AR1248CCC500



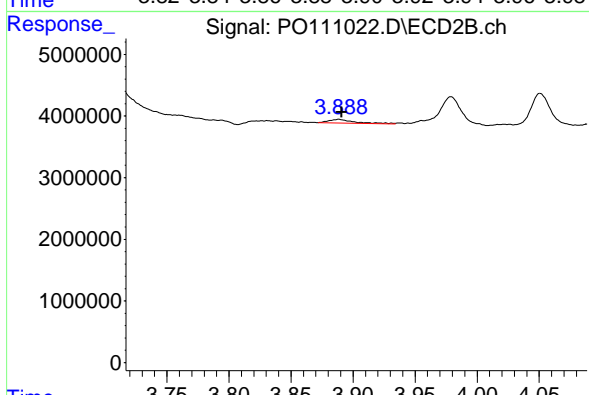
#7 AR-1016-5

R.T.: 5.208 min
 Delta R.T.: 0.000 min
 Response: 100781324
 Conc: 766.97 ng/ml



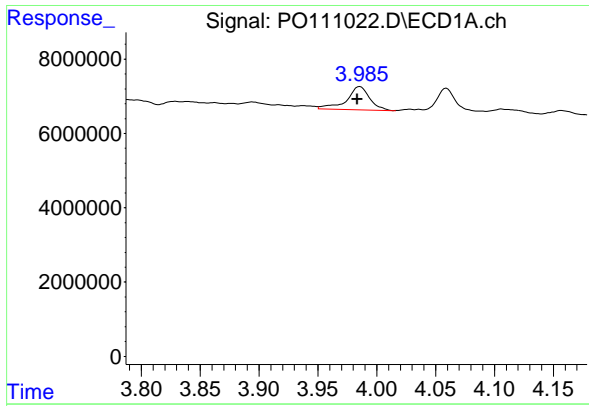
#8 AR-1221-1

R.T.: 3.895 min
 Delta R.T.: -0.003 min
 Response: 1903623
 Conc: 21.86 ng/ml



#8 AR-1221-1

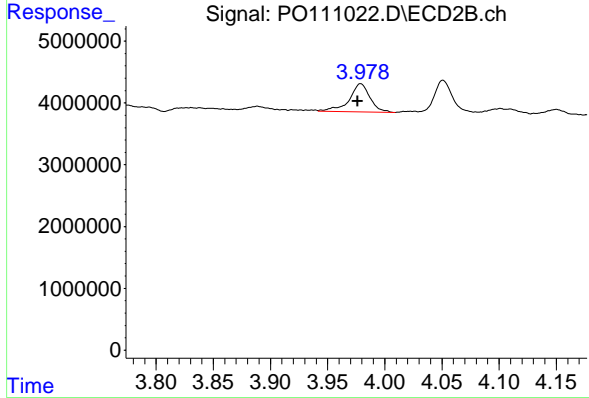
R.T.: 3.888 min
 Delta R.T.: -0.003 min
 Response: 843445
 Conc: 12.67 ng/ml



#9 AR-1221-2

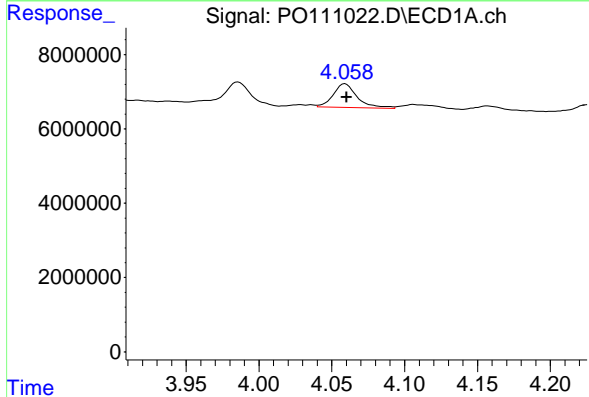
R.T.: 3.986 min
 Delta R.T.: 0.002 min
 Response: 8526455
 Conc: 125.92 ng/ml

Instrument :
 ECD_O
 ClientSampleId :
 AR1248CCC500



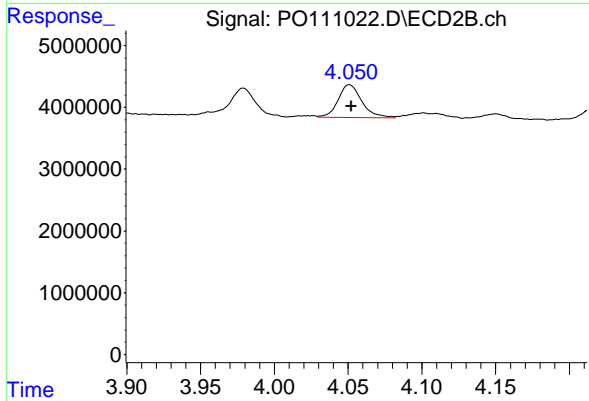
#9 AR-1221-2

R.T.: 3.979 min
 Delta R.T.: 0.003 min
 Response: 5774425
 Conc: 112.49 ng/ml



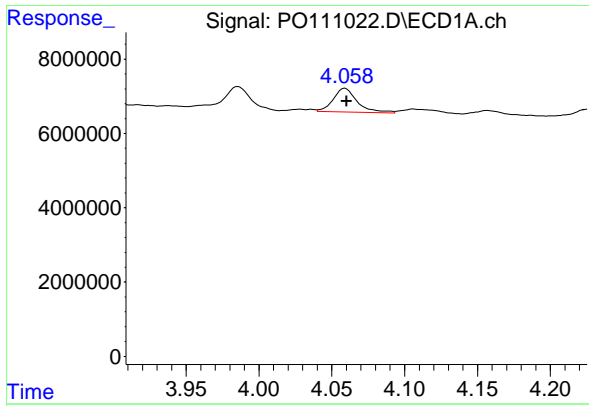
#10 AR-1221-3

R.T.: 4.059 min
 Delta R.T.: 0.000 min
 Response: 7356711
 Conc: 37.20 ng/ml



#10 AR-1221-3

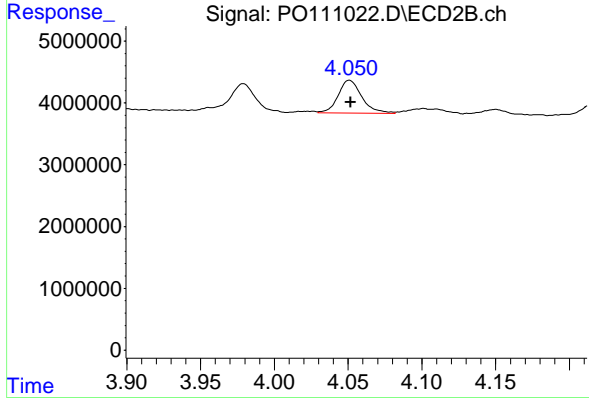
R.T.: 4.051 min
 Delta R.T.: -0.001 min
 Response: 5904304
 Conc: 38.58 ng/ml



#11 AR-1232-1

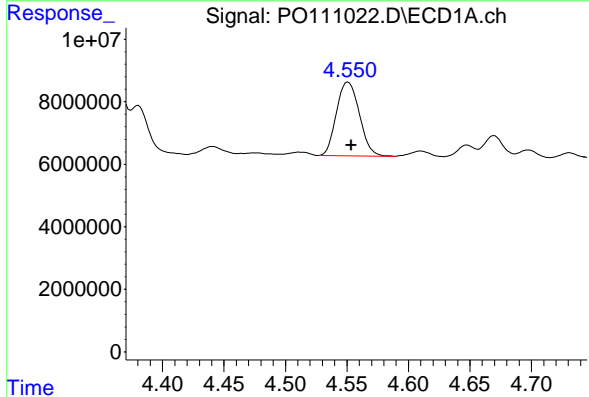
R.T.: 4.059 min
 Delta R.T.: 0.000 min
 Response: 7356711
 Conc: 47.90 ng/ml

Instrument :
 ECD_O
 ClientSampleId :
 AR1248CCC500



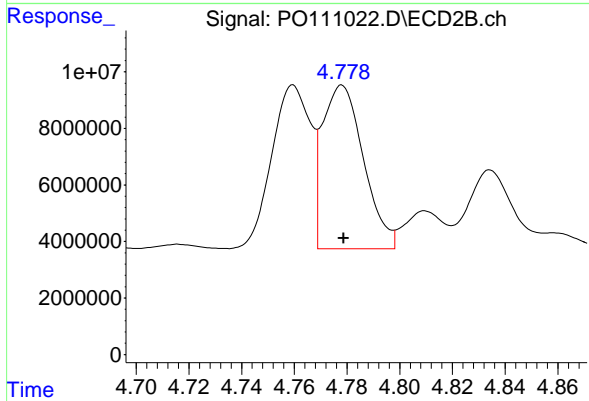
#11 AR-1232-1

R.T.: 4.051 min
 Delta R.T.: 0.000 min
 Response: 5904304
 Conc: 50.27 ng/ml



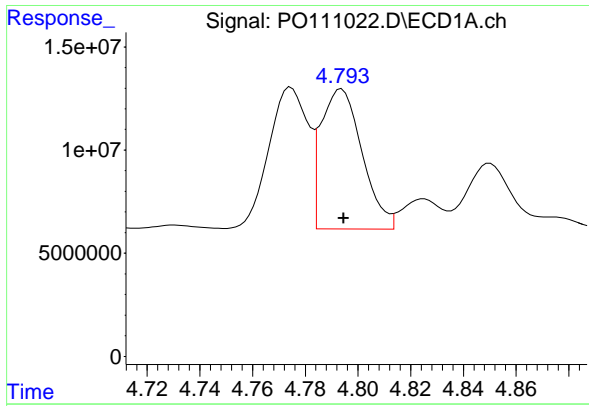
#12 AR-1232-2

R.T.: 4.551 min
 Delta R.T.: -0.003 min
 Response: 30659016
 Conc: 372.16 ng/ml



#12 AR-1232-2

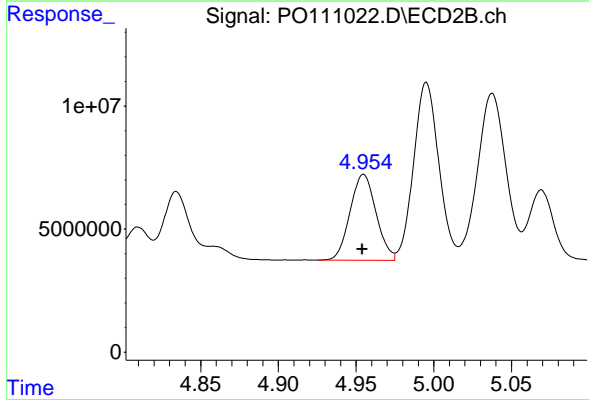
R.T.: 4.778 min
 Delta R.T.: 0.000 min
 Response: 62499608
 Conc: 543.31 ng/ml



#13 AR-1232-3

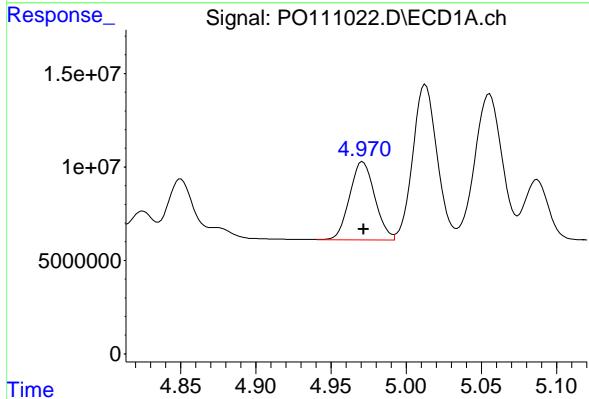
R.T.: 4.794 min
 Delta R.T.: 0.000 min
 Response: 73768851
 Conc: 463.71 ng/ml

Instrument :
 ECD_O
 ClientSampleId :
 AR1248CCC500



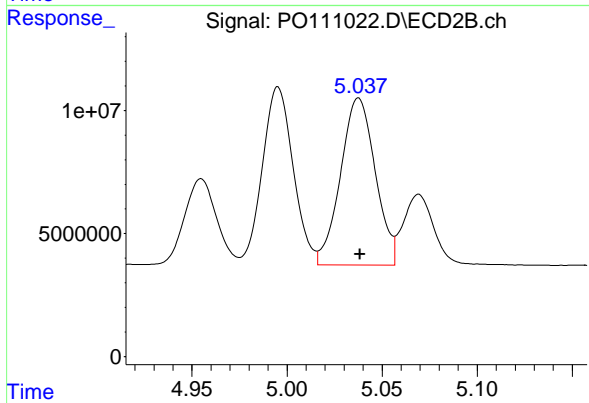
#13 AR-1232-3

R.T.: 4.955 min
 Delta R.T.: 0.000 min
 Response: 40682297
 Conc: 674.82 ng/ml



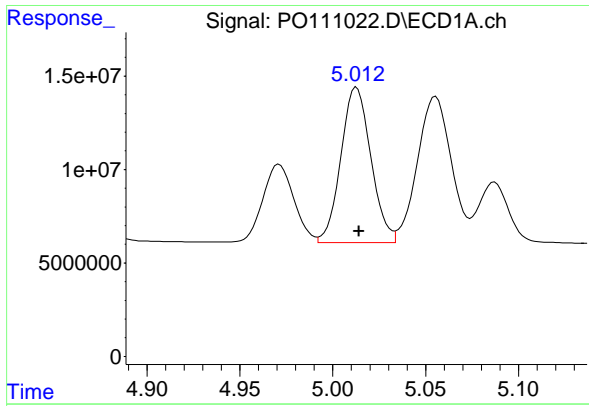
#14 AR-1232-4

R.T.: 4.971 min
 Delta R.T.: 0.000 min
 Response: 48524098
 Conc: 576.50 ng/ml



#14 AR-1232-4

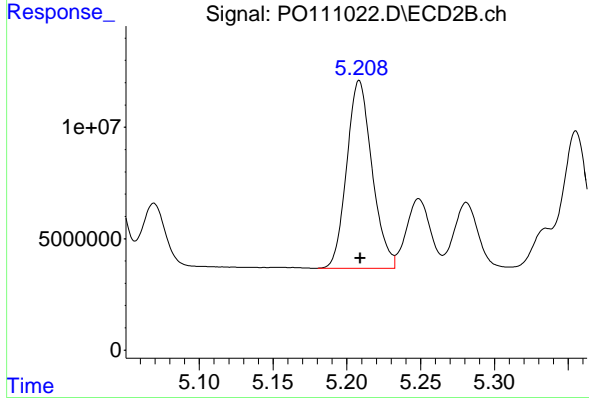
R.T.: 5.038 min
 Delta R.T.: 0.000 min
 Response: 86383656
 Conc: 1550.52 ng/ml



#15 AR-1232-5

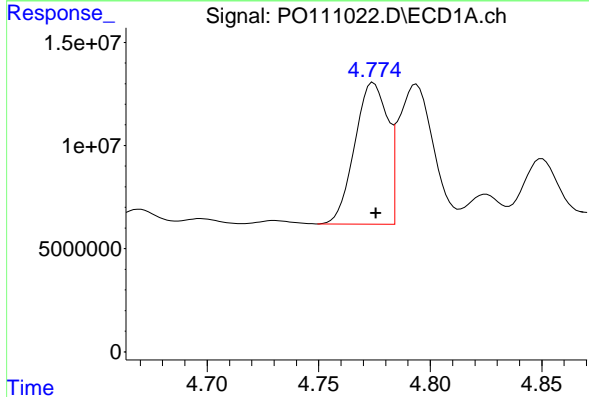
R.T.: 5.013 min
 Delta R.T.: -0.001 min
 Response: 93621469
 Conc: 1590.24 ng/ml

Instrument :
 ECD_O
 ClientSampleId :
 AR1248CCC500



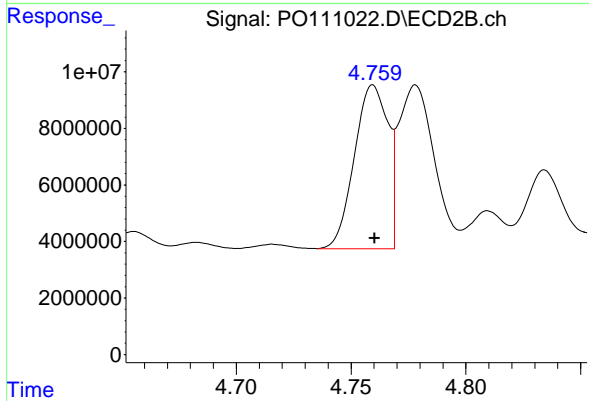
#15 AR-1232-5

R.T.: 5.208 min
 Delta R.T.: 0.000 min
 Response: 100781324
 Conc: 1712.08 ng/ml



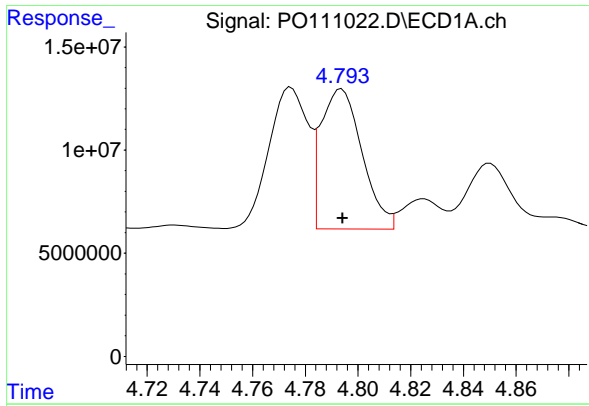
#16 AR-1242-1

R.T.: 4.775 min
 Delta R.T.: -0.001 min
 Response: 70687917
 Conc: 384.32 ng/ml



#16 AR-1242-1

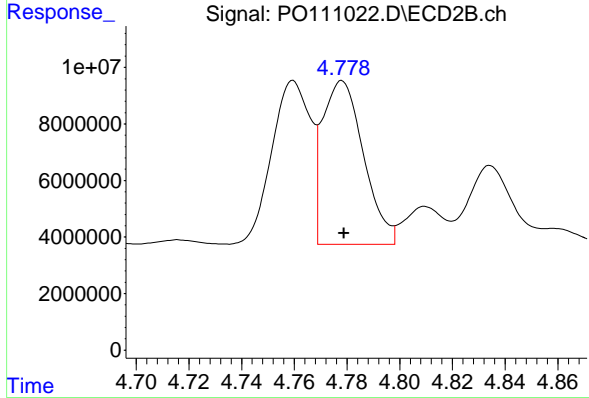
R.T.: 4.760 min
 Delta R.T.: 0.000 min
 Response: 59112390
 Conc: 446.72 ng/ml



#17 AR-1242-2

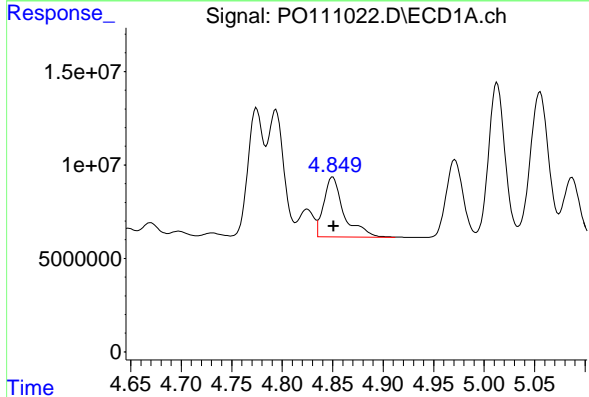
R.T.: 4.794 min
 Delta R.T.: 0.000 min
 Response: 73768851
 Conc: 286.37 ng/ml

Instrument :
 ECD_O
 ClientSampleId :
 AR1248CCC500



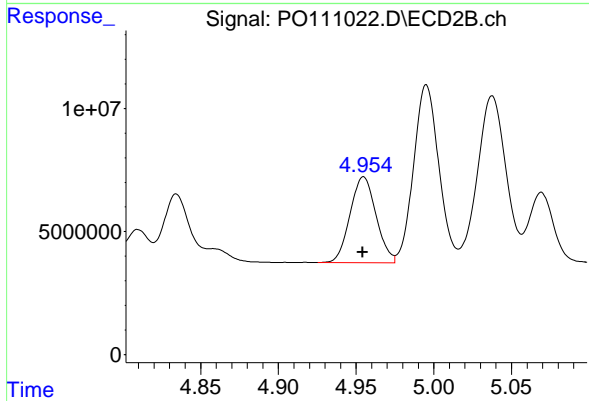
#17 AR-1242-2

R.T.: 4.778 min
 Delta R.T.: 0.000 min
 Response: 62499608
 Conc: 328.82 ng/ml



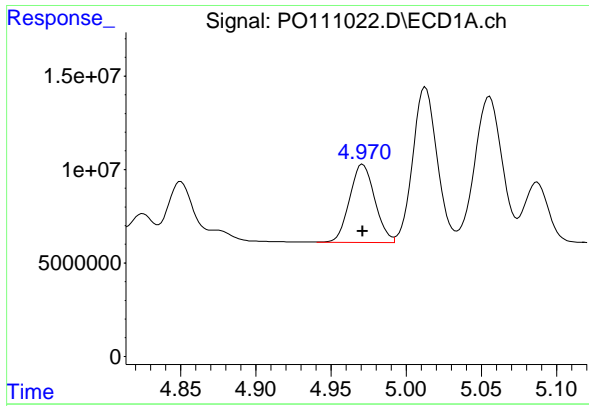
#18 AR-1242-3

R.T.: 4.850 min
 Delta R.T.: 0.000 min
 Response: 44740930
 Conc: 245.68 ng/ml



#18 AR-1242-3

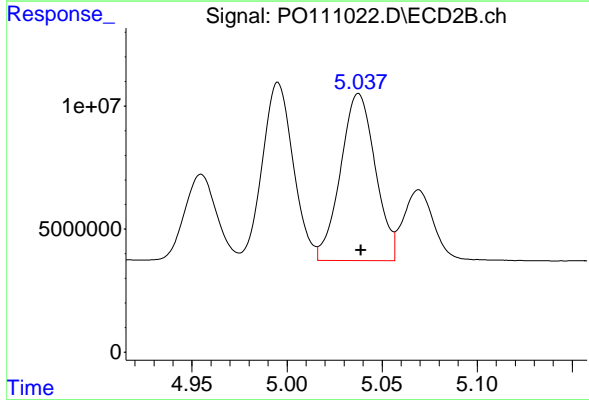
R.T.: 4.955 min
 Delta R.T.: 0.000 min
 Response: 40682297
 Conc: 401.52 ng/ml



#19 AR-1242-4

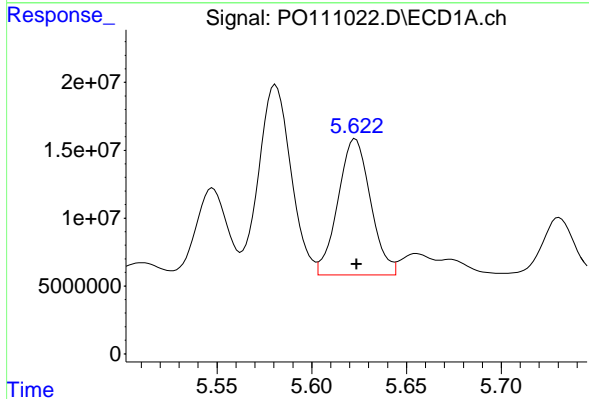
R.T.: 4.971 min
 Delta R.T.: 0.000 min
 Response: 48524098
 Conc: 347.46 ng/ml

Instrument :
 ECD_O
 ClientSampleId :
 AR1248CCC500



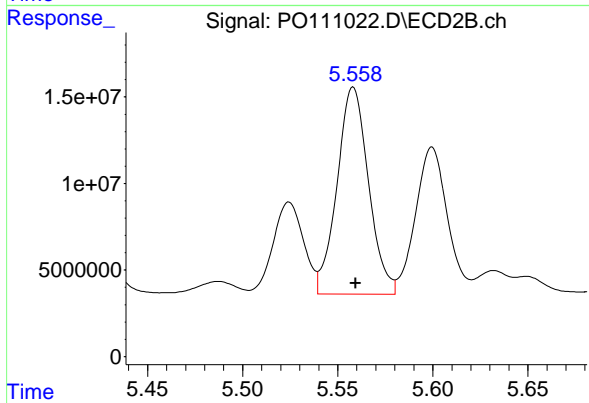
#19 AR-1242-4

R.T.: 5.038 min
 Delta R.T.: -0.001 min
 Response: 86383656
 Conc: 832.93 ng/ml



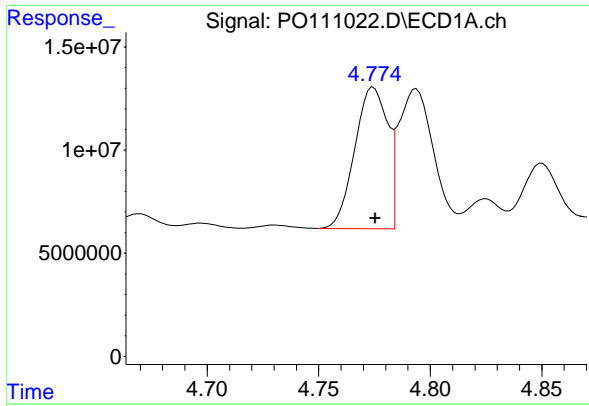
#20 AR-1242-5

R.T.: 5.623 min
 Delta R.T.: 0.000 min
 Response: 119840794
 Conc: 768.73 ng/ml



#20 AR-1242-5

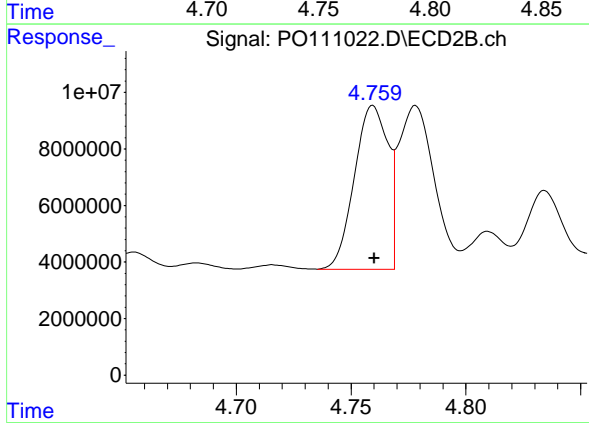
R.T.: 5.558 min
 Delta R.T.: -0.001 min
 Response: 137762968
 Conc: 1088.47 ng/ml



#21 AR-1248-1

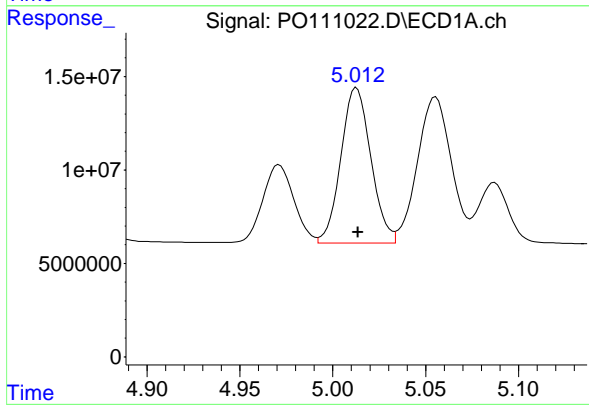
R.T.: 4.775 min
 Delta R.T.: 0.000 min
 Response: 70687917
 Conc: 538.11 ng/ml

Instrument :
 ECD_O
 ClientSampleId :
 AR1248CCC500



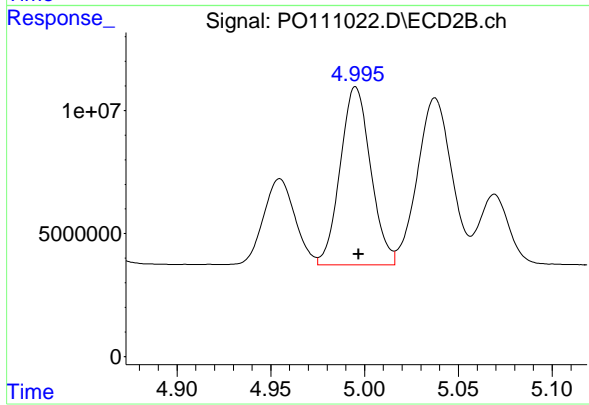
#21 AR-1248-1

R.T.: 4.760 min
 Delta R.T.: 0.000 min
 Response: 59112390
 Conc: 613.36 ng/ml



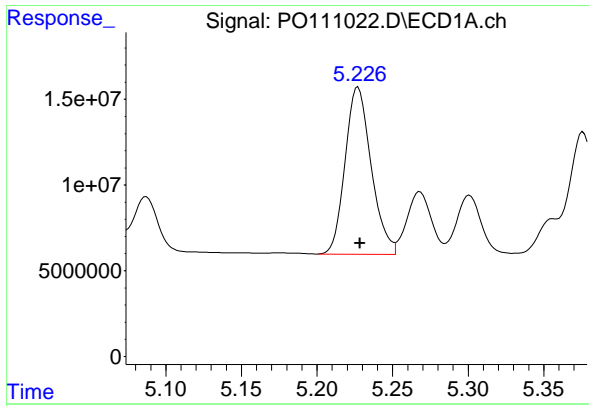
#22 AR-1248-2

R.T.: 5.013 min
 Delta R.T.: 0.000 min
 Response: 93621469
 Conc: 534.27 ng/ml



#22 AR-1248-2

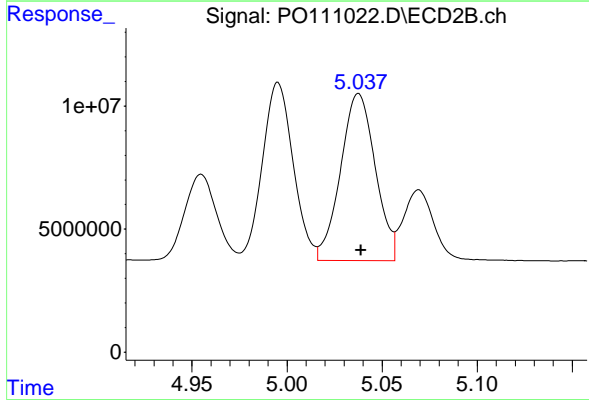
R.T.: 4.995 min
 Delta R.T.: -0.002 min
 Response: 81689183
 Conc: 604.56 ng/ml



#23 AR-1248-3

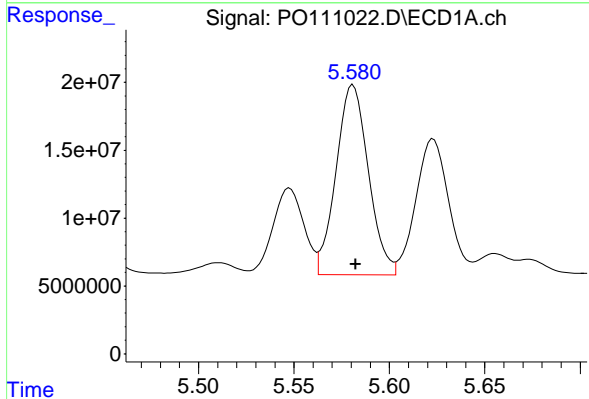
R.T.: 5.227 min
 Delta R.T.: -0.001 min
 Response: 117070183
 Conc: 531.01 ng/ml

Instrument :
 ECD_O
 ClientSampleId :
 AR1248CCC500



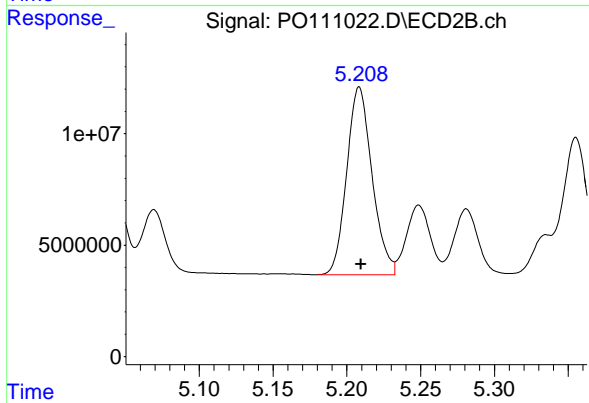
#23 AR-1248-3

R.T.: 5.038 min
 Delta R.T.: -0.001 min
 Response: 86383656
 Conc: 595.16 ng/ml



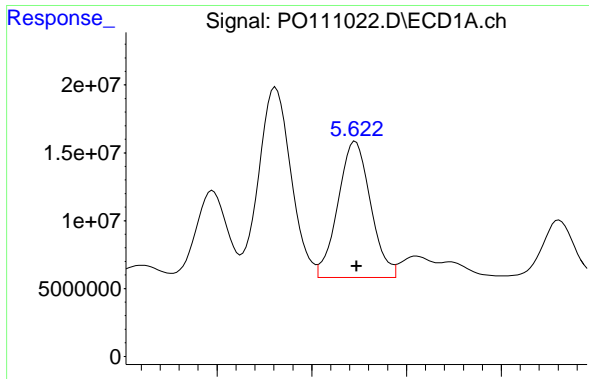
#24 AR-1248-4

R.T.: 5.581 min
 Delta R.T.: -0.001 min
 Response: 165303859
 Conc: 504.41 ng/ml



#24 AR-1248-4

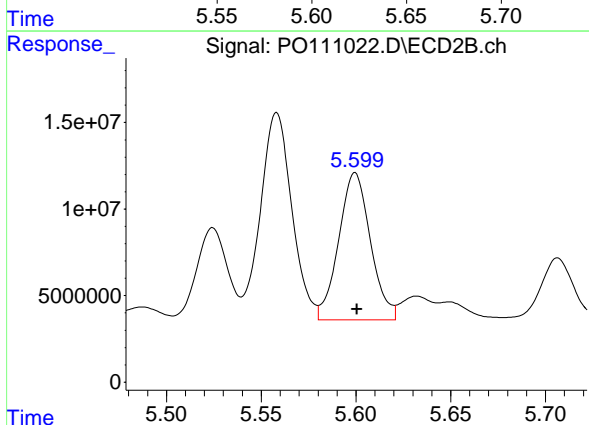
R.T.: 5.208 min
 Delta R.T.: -0.001 min
 Response: 100781324
 Conc: 601.62 ng/ml



#25 AR-1248-5

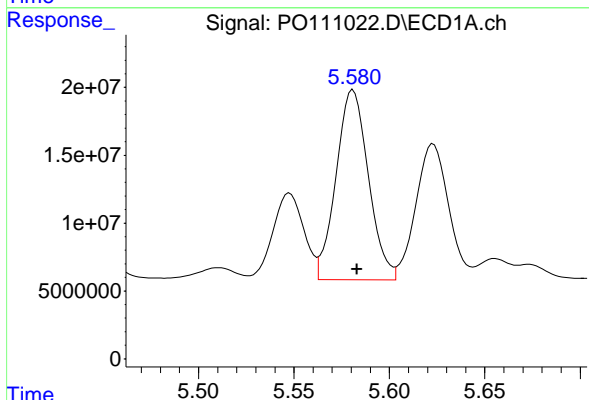
R.T.: 5.623 min
 Delta R.T.: 0.000 min
 Response: 119840794
 Conc: 513.35 ng/ml

Instrument :
 ECD_O
 ClientSampleId :
 AR1248CCC500



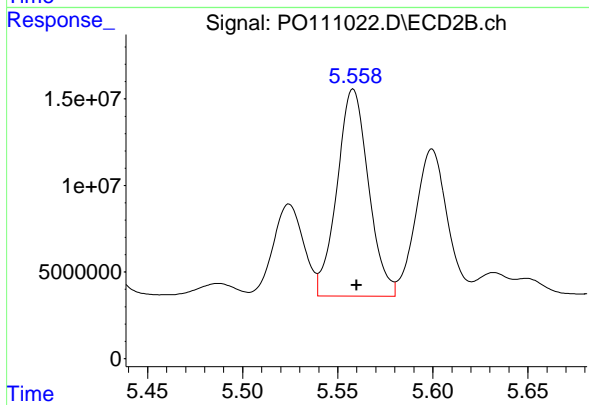
#25 AR-1248-5

R.T.: 5.600 min
 Delta R.T.: -0.001 min
 Response: 99185576
 Conc: 590.82 ng/ml



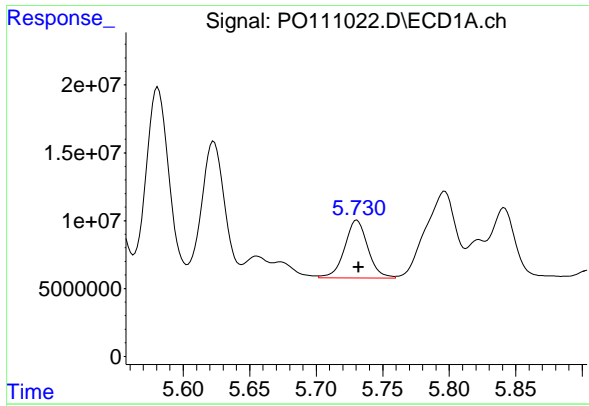
#26 AR-1254-1

R.T.: 5.581 min
 Delta R.T.: -0.002 min
 Response: 165303859
 Conc: 489.69 ng/ml



#26 AR-1254-1

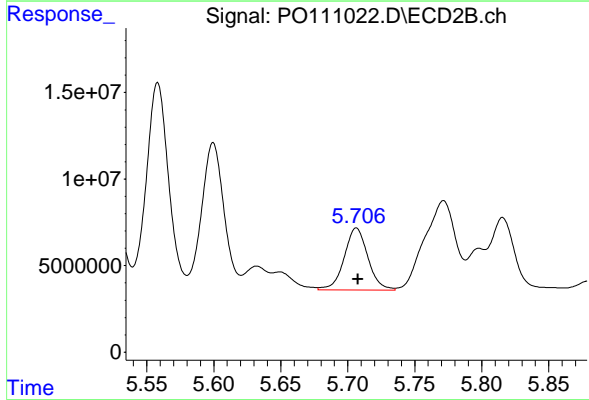
R.T.: 5.558 min
 Delta R.T.: -0.002 min
 Response: 137762968
 Conc: 548.80 ng/ml



#27 AR-1254-2

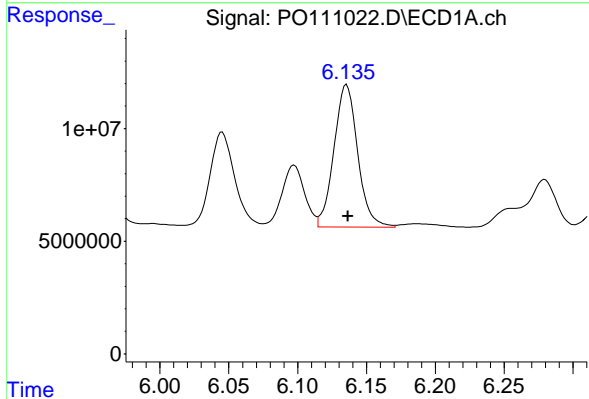
R.T.: 5.731 min
 Delta R.T.: -0.001 min
 Response: 51951980
 Conc: 180.58 ng/ml

Instrument :
 ECD_O
 ClientSampleId :
 AR1248CCC500



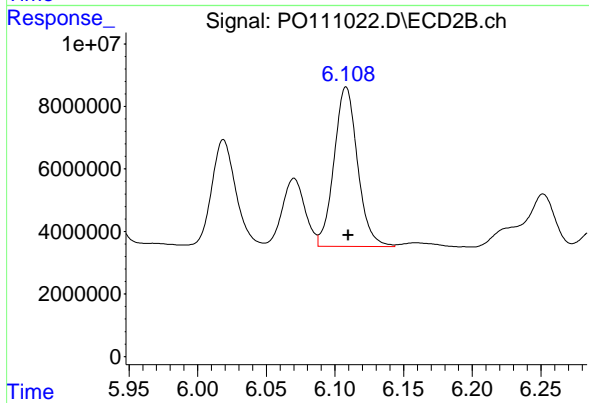
#27 AR-1254-2

R.T.: 5.706 min
 Delta R.T.: -0.001 min
 Response: 44191693
 Conc: 202.54 ng/ml



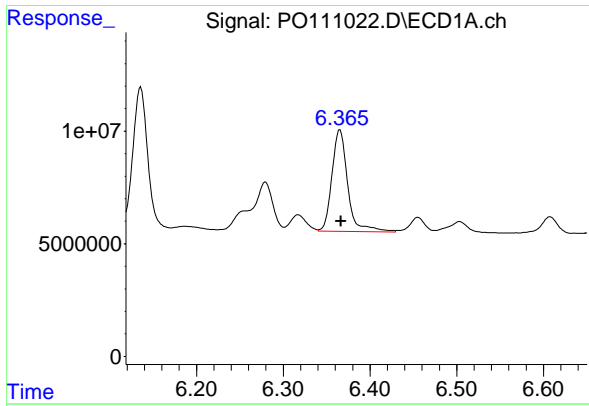
#28 AR-1254-3

R.T.: 6.136 min
 Delta R.T.: 0.000 min
 Response: 75898217
 Conc: 165.97 ng/ml



#28 AR-1254-3

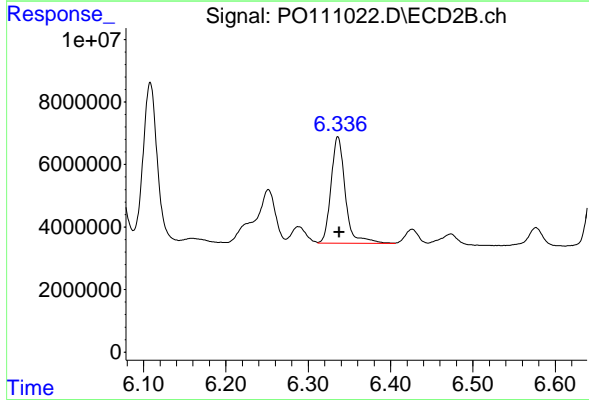
R.T.: 6.108 min
 Delta R.T.: -0.002 min
 Response: 60975009
 Conc: 182.45 ng/ml



#29 AR-1254-4

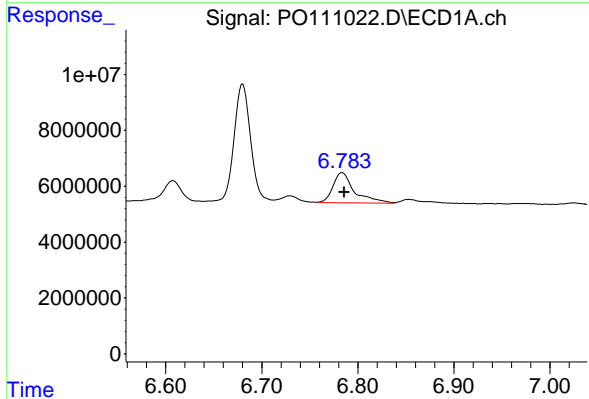
R.T.: 6.365 min
Delta R.T.: -0.002 min
Response: 57002367
Conc: 187.00 ng/ml

Instrument :
ECD_O
ClientSampleId :
AR1248CCC500



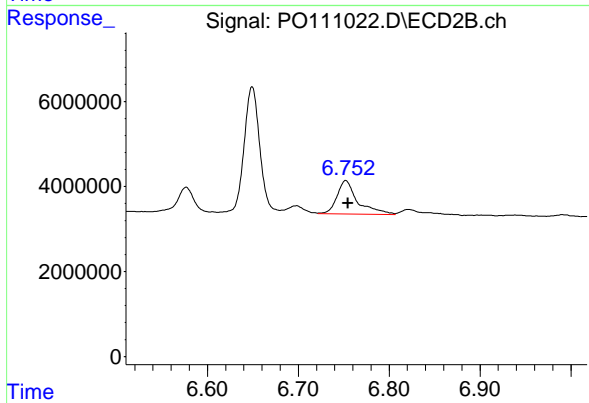
#29 AR-1254-4

R.T.: 6.336 min
Delta R.T.: -0.002 min
Response: 40845752
Conc: 210.37 ng/ml



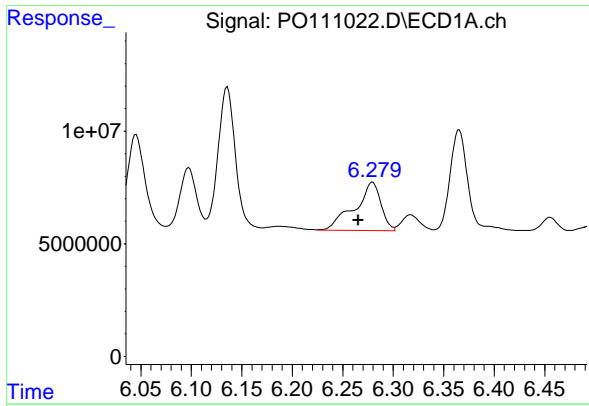
#30 AR-1254-5

R.T.: 6.784 min
Delta R.T.: -0.002 min
Response: 16704379
Conc: 39.59 ng/ml



#30 AR-1254-5

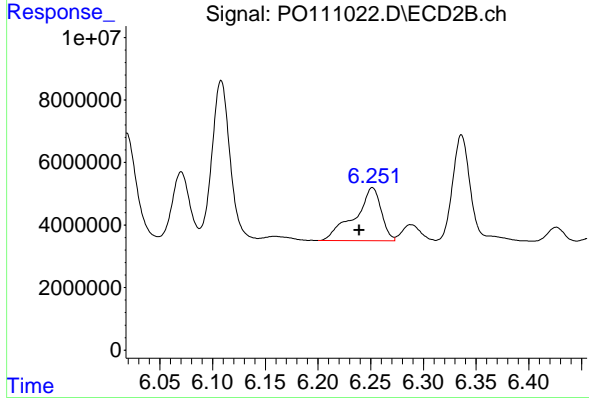
R.T.: 6.752 min
Delta R.T.: -0.002 min
Response: 12545482
Conc: 46.76 ng/ml



#31 AR-1260-1

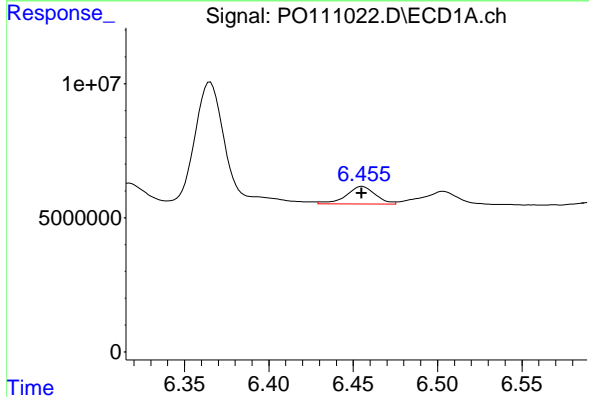
R.T.: 6.280 min
 Delta R.T.: 0.014 min
 Response: 39172828
 Conc: 117.77 ng/ml

Instrument :
 ECD_O
 ClientSampleId :
 AR1248CCC500



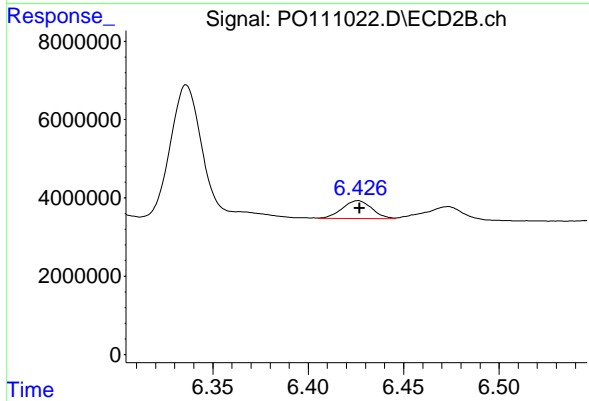
#31 AR-1260-1

R.T.: 6.252 min
 Delta R.T.: 0.012 min
 Response: 29768416
 Conc: 134.84 ng/ml



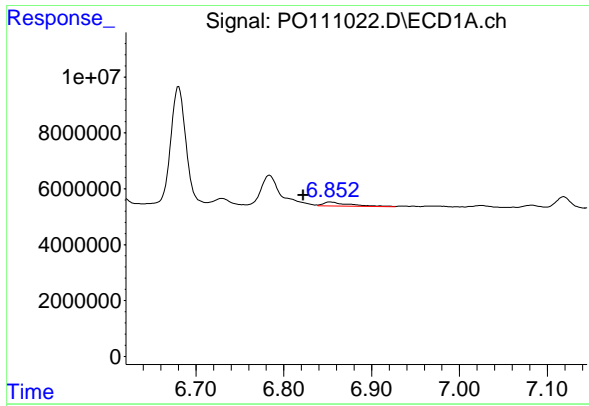
#32 AR-1260-2

R.T.: 6.455 min
 Delta R.T.: 0.000 min
 Response: 7910680
 Conc: 19.07 ng/ml



#32 AR-1260-2

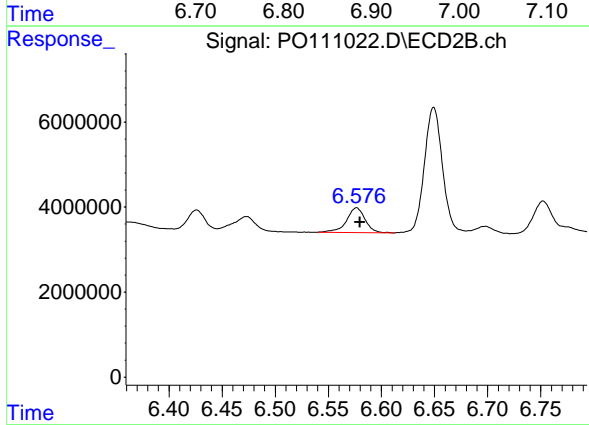
R.T.: 6.426 min
 Delta R.T.: 0.000 min
 Response: 4947867
 Conc: 19.24 ng/ml



#33 AR-1260-3

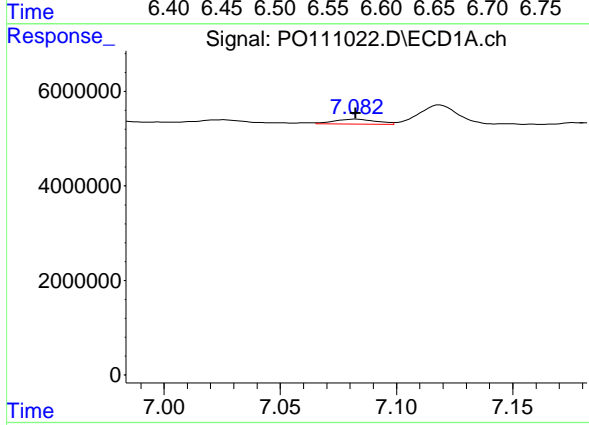
R.T.: 6.853 min
 Delta R.T.: 0.031 min
 Response: 2925590
 Conc: 8.31 ng/ml

Instrument :
 ECD_O
 ClientSampleId :
 AR1248CCC500



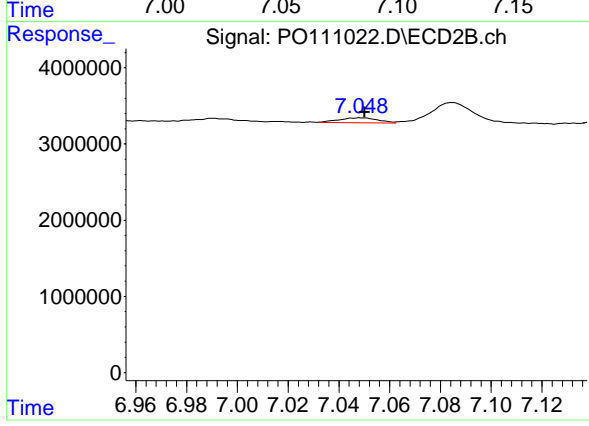
#33 AR-1260-3

R.T.: 6.577 min
 Delta R.T.: -0.003 min
 Response: 7134208
 Conc: 30.60 ng/ml



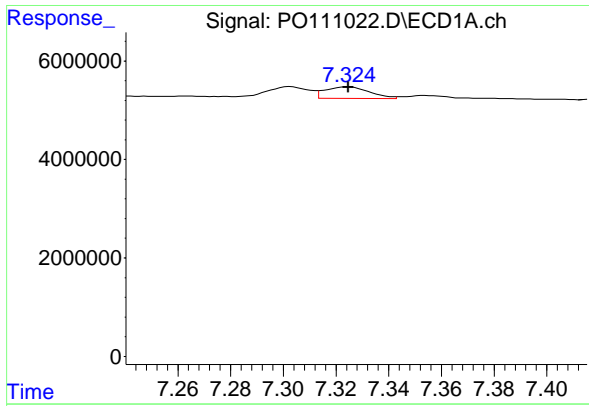
#34 AR-1260-4

R.T.: 7.082 min
 Delta R.T.: 0.000 min
 Response: 1283018
 Conc: 4.22 ng/ml



#34 AR-1260-4

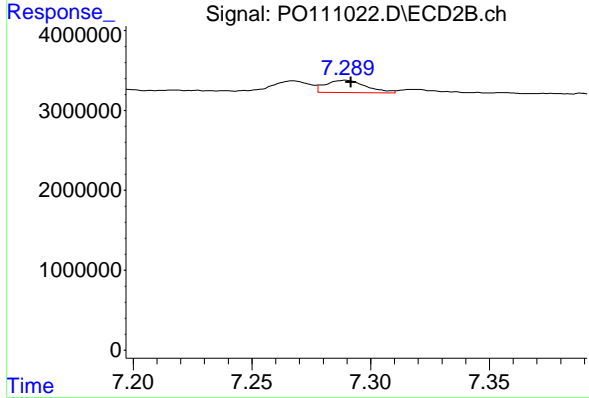
R.T.: 7.049 min
 Delta R.T.: -0.002 min
 Response: 660425
 Conc: 3.63 ng/ml



#35 AR-1260-5

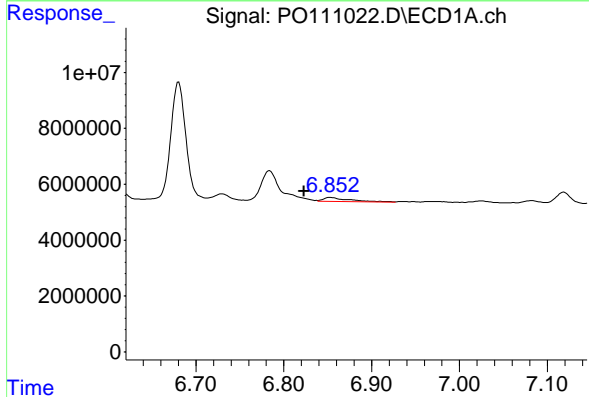
R.T.: 7.325 min
 Delta R.T.: 0.000 min
 Response: 2796152
 Conc: 3.81 ng/ml

Instrument : ECD_O
 ClientSampleId : AR1248CCC500



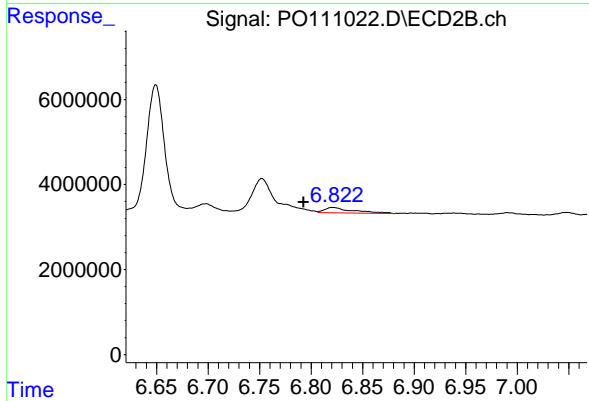
#35 AR-1260-5

R.T.: 7.289 min
 Delta R.T.: -0.002 min
 Response: 1828796
 Conc: 4.65 ng/ml



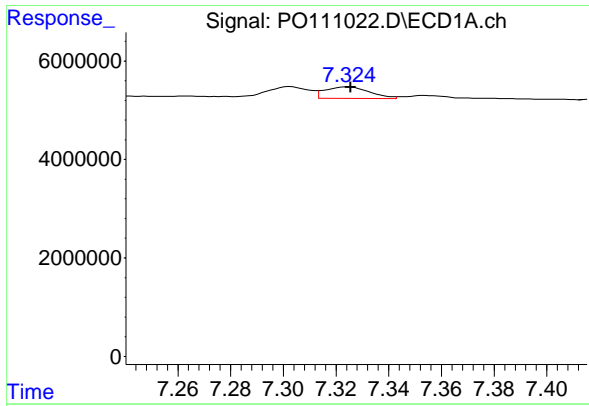
#36 AR-1262-1

R.T.: 6.853 min
 Delta R.T.: 0.030 min
 Response: 2925590
 Conc: 6.35 ng/ml



#36 AR-1262-1

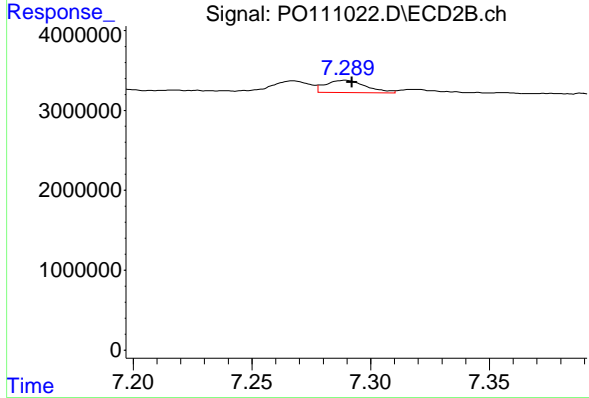
R.T.: 6.821 min
 Delta R.T.: 0.029 min
 Response: 2452395
 Conc: 8.68 ng/ml



#37 AR-1262-2

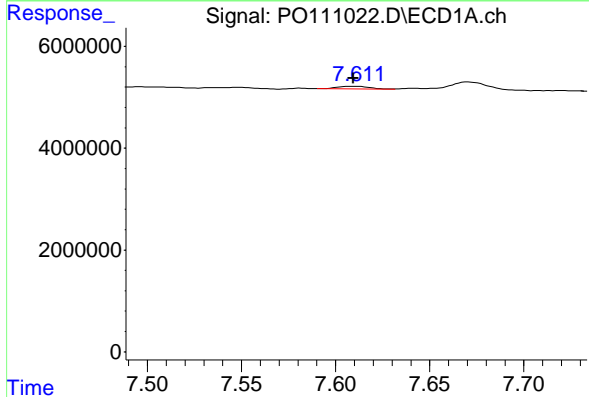
R.T.: 7.325 min
 Delta R.T.: -0.001 min
 Response: 2796152
 Conc: 3.56 ng/ml

Instrument : ECD_O
 ClientSampleId : AR1248CCC500



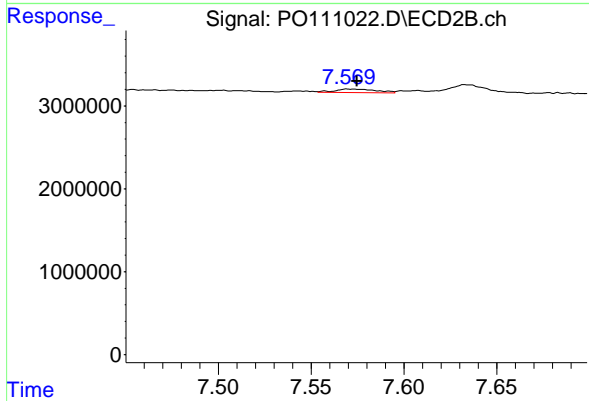
#37 AR-1262-2

R.T.: 7.289 min
 Delta R.T.: -0.003 min
 Response: 1828796
 Conc: 4.16 ng/ml



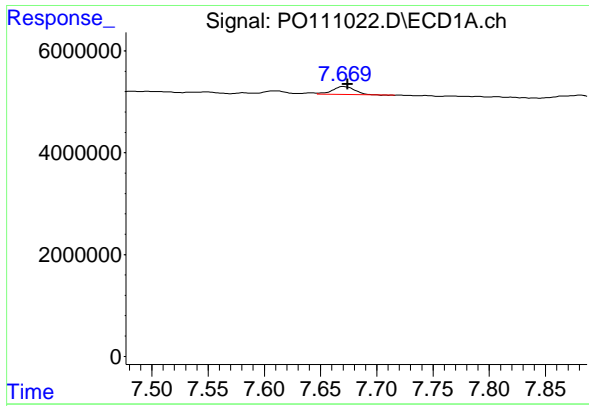
#38 AR-1262-3

R.T.: 7.611 min
 Delta R.T.: 0.002 min
 Response: 654396
 Conc: 1.96 ng/ml



#38 AR-1262-3

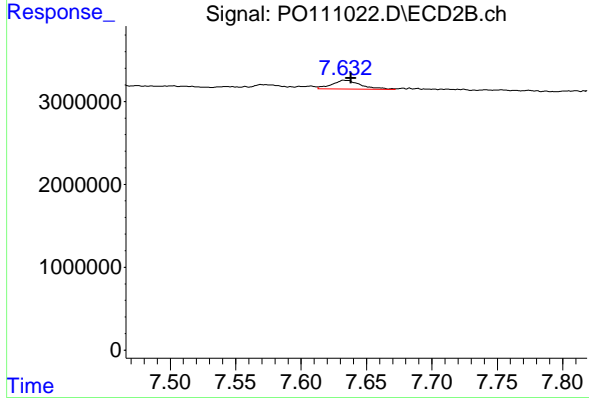
R.T.: 7.570 min
 Delta R.T.: -0.005 min
 Response: 657048
 Conc: 4.05 ng/ml



#39 AR-1262-4

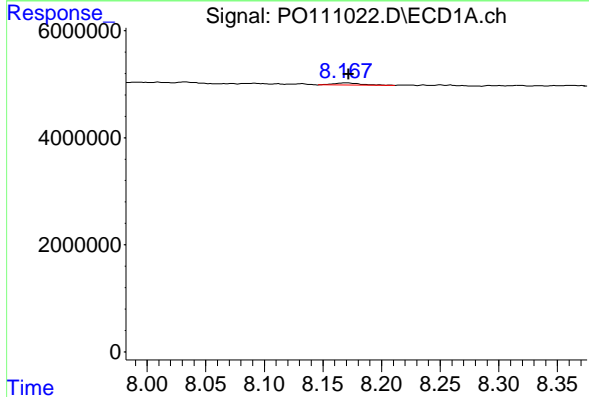
R.T.: 7.670 min
 Delta R.T.: -0.004 min
 Response: 2179758
 Conc: 3.77 ng/ml

Instrument :
 ECD_O
 ClientSampleId :
 AR1248CCC500



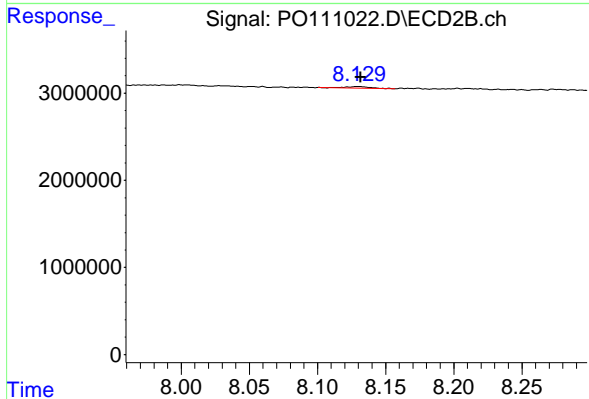
#39 AR-1262-4

R.T.: 7.633 min
 Delta R.T.: -0.005 min
 Response: 1623303
 Conc: 5.58 ng/ml



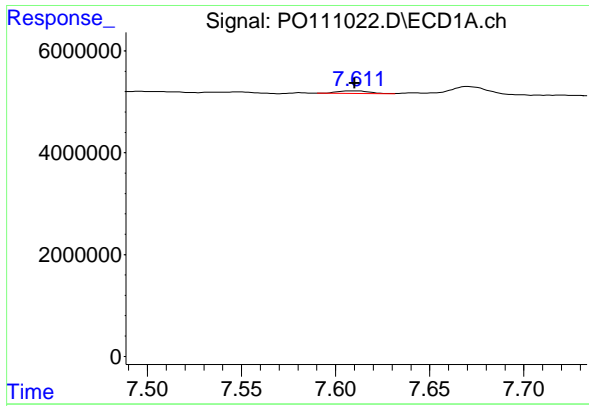
#40 AR-1262-5

R.T.: 8.168 min
 Delta R.T.: -0.003 min
 Response: 702404
 Conc: 2.63 ng/ml



#40 AR-1262-5

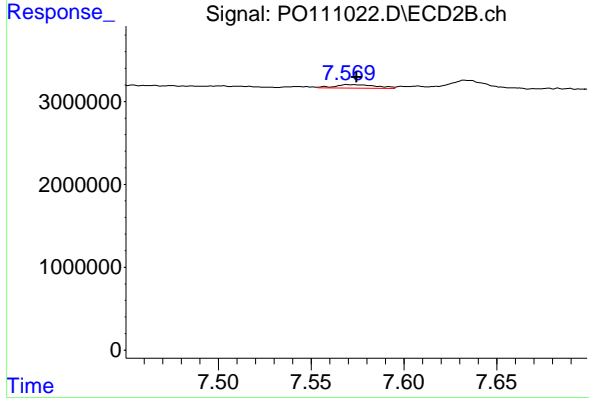
R.T.: 8.130 min
 Delta R.T.: -0.002 min
 Response: 223556
 Conc: 2.27 ng/ml



#41 AR-1268-1

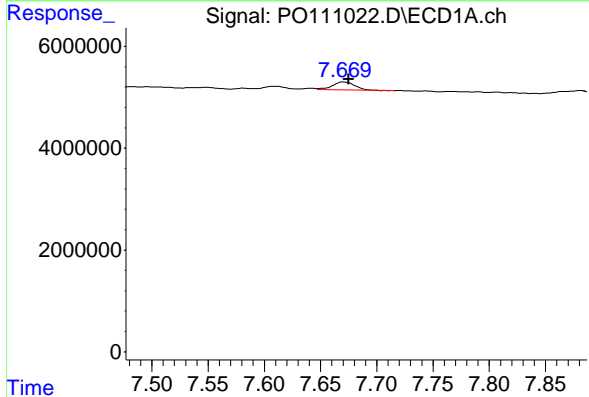
R.T.: 7.611 min
 Delta R.T.: 0.001 min
 Response: 654396
 Conc: 0.74 ng/ml

Instrument :
 ECD_O
 ClientSampleId :
 AR1248CCC500



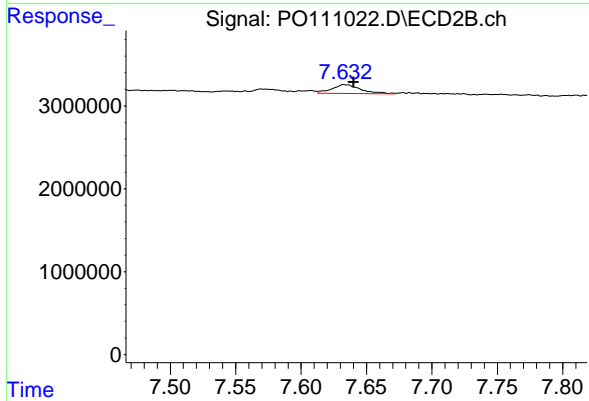
#41 AR-1268-1

R.T.: 7.570 min
 Delta R.T.: -0.004 min
 Response: 657048
 Conc: 1.52 ng/ml



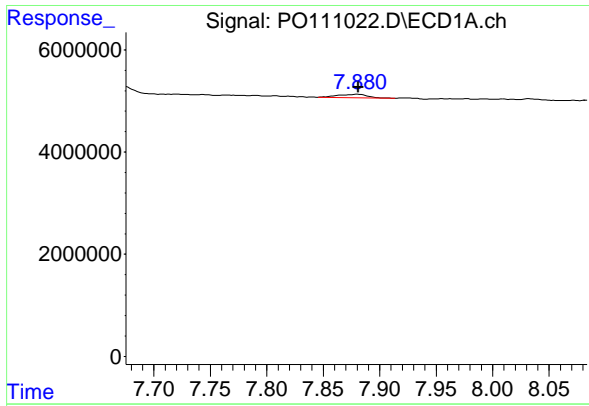
#42 AR-1268-2

R.T.: 7.670 min
 Delta R.T.: -0.005 min
 Response: 2179758
 Conc: 2.72 ng/ml



#42 AR-1268-2

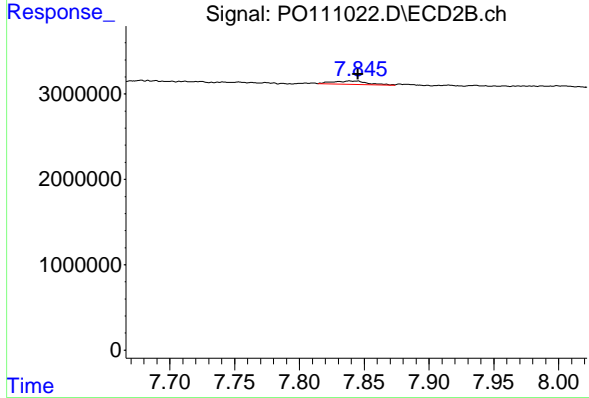
R.T.: 7.633 min
 Delta R.T.: -0.007 min
 Response: 1623303
 Conc: 4.23 ng/ml



#43 AR-1268-3

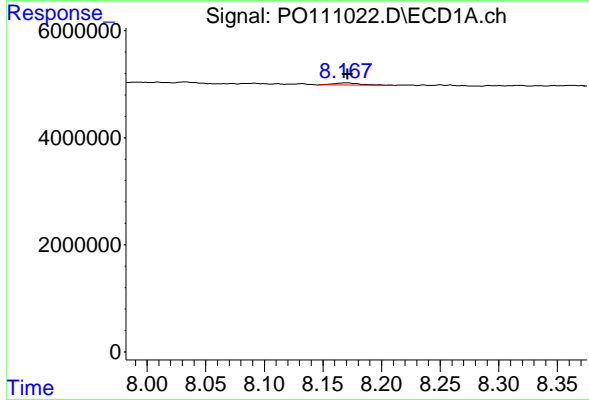
R.T.: 7.881 min
 Delta R.T.: 0.000 min
 Response: 1193492
 Conc: 1.74 ng/ml

Instrument : ECD_O
 ClientSampleId : AR1248CCC500



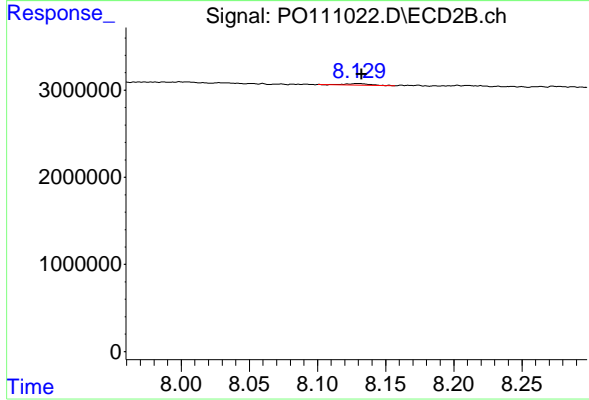
#43 AR-1268-3

R.T.: 7.839 min
 Delta R.T.: -0.007 min
 Response: 728064
 Conc: 2.56 ng/ml



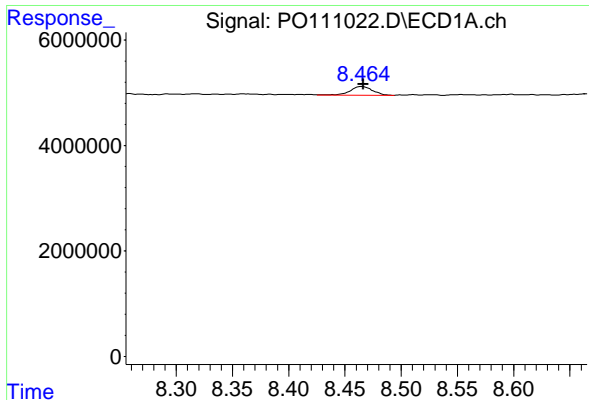
#44 AR-1268-4

R.T.: 8.168 min
 Delta R.T.: -0.002 min
 Response: 702404
 Conc: 2.53 ng/ml



#44 AR-1268-4

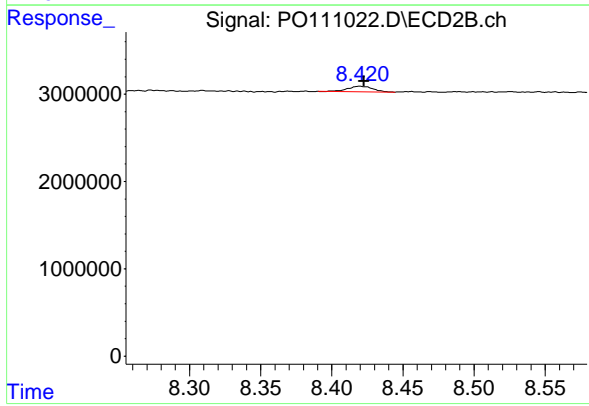
R.T.: 8.130 min
 Delta R.T.: -0.003 min
 Response: 223556
 Conc: 2.15 ng/ml



#45 AR-1268-5

R.T.: 8.465 min
 Delta R.T.: -0.002 min
 Response: 2403879
 Conc: 1.18 ng/ml

Instrument :
 ECD_O
 ClientSampleId :
 AR1248CCC500



#45 AR-1268-5

R.T.: 8.420 min
 Delta R.T.: -0.003 min
 Response: 761152
 Conc: 1.25 ng/ml