

Data Path : Z:\pestpcbsrv\HPCHEM1\ECD_O\Data\P0051321\
 Data File : P0077753.D
 Signal(s) : Signal #1: ECD1A.CH Signal #2: ECD2B.CH
 Acq On : 13 May 2021 15:30
 Operator : DD\AJ
 Sample : AR1232ICC500
 Misc :
 ALS Vial : 9 Sample Multiplier: 1

Instrument :
 ECD_O
 ClientSampleId :
 AR1232ICC500

Integration File signal 1: autoint1.e
 Integration File signal 2: autoint2.e
 Quant Time: May 14 05:06:48 2021
 Quant Method : Z:\pestpcbsrv\HPCHEM1\ECD_O\methods\P0051321.M
 Quant Title : GC EXTRACTABLES
 QLast Update : Fri May 14 05:06:07 2021
 Response via : Initial Calibration
 Integrator: ChemStation 6890 Scale Mode: Small noise peaks clipped

Volume Inj. : 2 µl
 Signal #1 Phase : ZB-MR1 Signal #2 Phase: ZB-MR2
 Signal #1 Info : 30Mx0.32mmx 0.50µ Signal #2 Info : 30M x 0.32mm x 0.25µm

Compound	RT#1	RT#2	Resp#1	Resp#2	ng/ml	ng/ml

System Monitoring Compounds						
1) SA Tetrachlo...	4.356	3.634	3083230	1305674	50.000	50.000
2) SA Decachlor...	9.981	8.832	2038226	1177180	50.000	50.000
Target Compounds						
11) L3 AR-1232-1	4.787	4.071	659455	286292	500.000	500.000
12) L3 AR-1232-2	5.362	4.886	333331	288832	500.000	500.000
13) L3 AR-1232-3	5.674	5.073	601804	142880	500.000	500.000
14) L3 AR-1232-4	5.844	5.168	276735	133340	500.000	500.000
15) L3 AR-1232-5	5.944	5.350	198577	140338	500.000	500.000

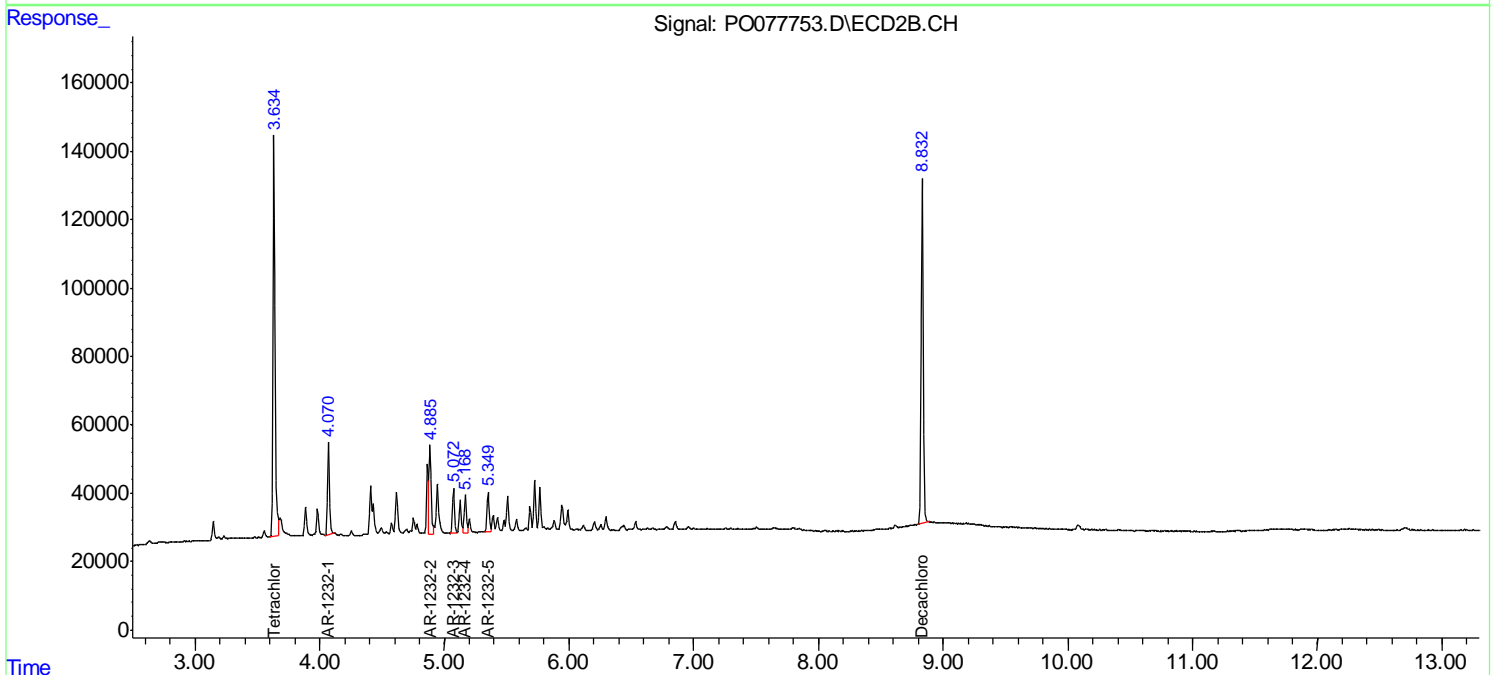
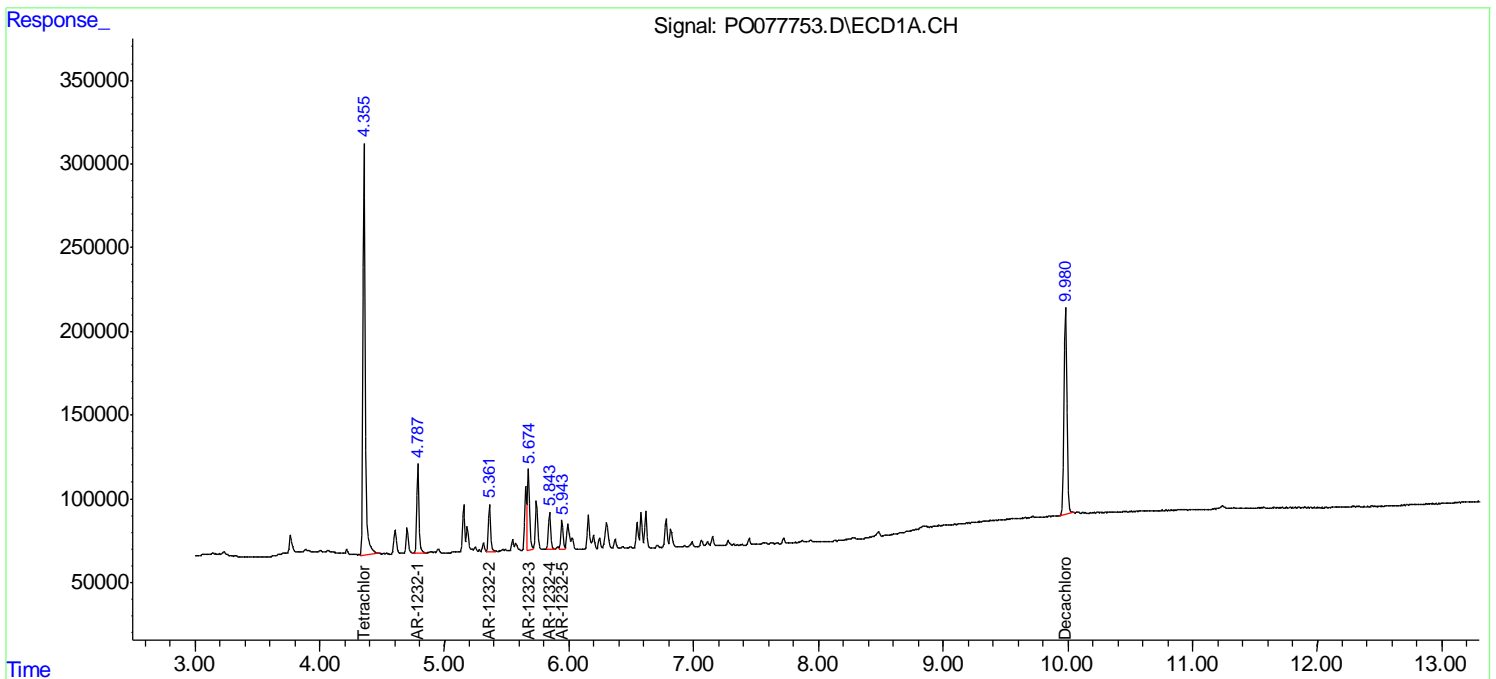
(f)=RT Delta > 1/2 Window (#)=Amounts differ by > 25% (m)=manual int.

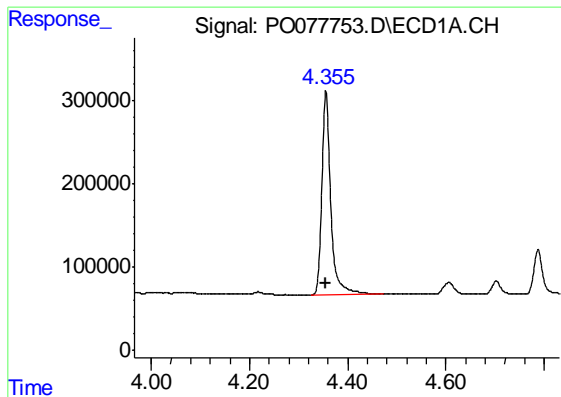
Data Path : Z:\pestpcbsrv\HPCHEM1\ECD_O\Data\PO051321\
 Data File : PO077753.D
 Signal(s) : Signal #1: ECD1A.CH Signal #2: ECD2B.CH
 Acq On : 13 May 2021 15:30
 Operator : DD\AJ
 Sample : AR1232ICC500
 Misc :
 ALS Vial : 9 Sample Multiplier: 1

Instrument :
 ECD_O
 ClientSampled :
 AR1232ICC500

Integration File signal 1: autoint1.e
 Integration File signal 2: autoint2.e
 Quant Time: May 14 05:06:48 2021
 Quant Method : Z:\pestpcbsrv\HPCHEM1\ECD_O\methods\PO051321.M
 Quant Title : GC EXTRACTABLES
 QLast Update : Fri May 14 05:06:07 2021
 Response via : Initial Calibration
 Integrator: ChemStation 6890 Scale Mode: Small noise peaks clipped

Volume Inj. : 2 µl
 Signal #1 Phase : ZB-MR1 Signal #2 Phase: ZB-MR2
 Signal #1 Info : 30Mx0.32mmx 0.50µ Signal #2 Info : 30M x 0.32mm x 0.25µm

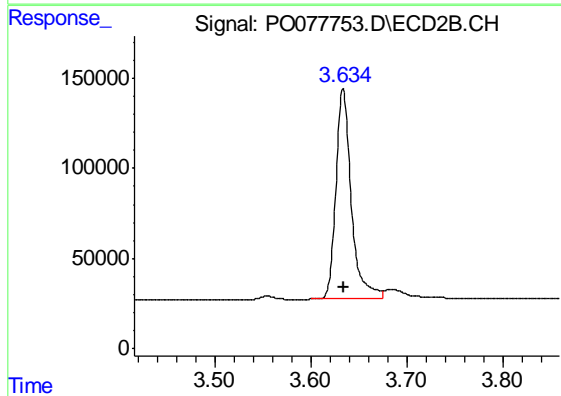




#1 Tetrachloro-m-xylene

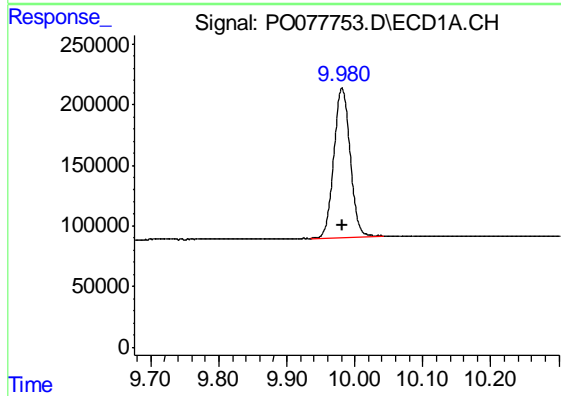
R.T.: 4.356 min
Delta R.T.: 0.000 min
Response: 3083230
Conc: 50.00 ng/ml

Instrument :
ECD_O
ClientSampleId :
AR1232ICC500



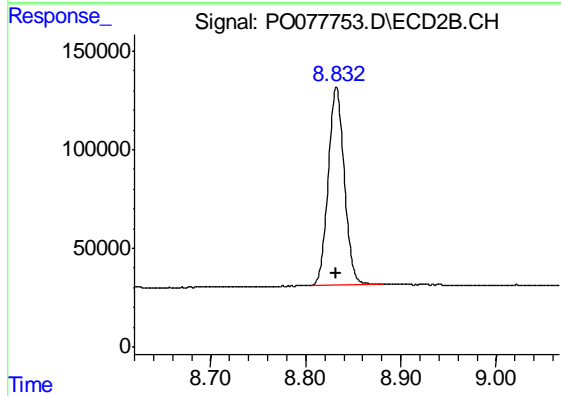
#1 Tetrachloro-m-xylene

R.T.: 3.634 min
Delta R.T.: 0.000 min
Response: 1305674
Conc: 50.00 ng/ml



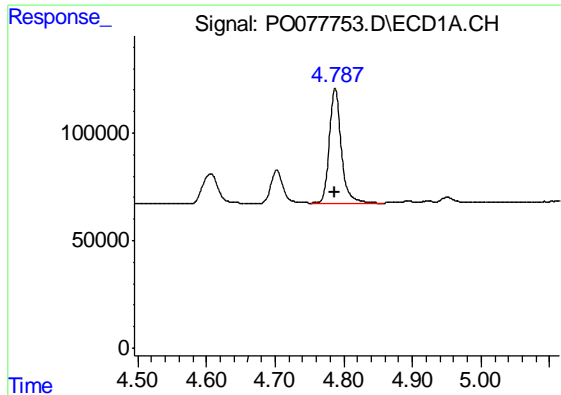
#2 Decachlorobiphenyl

R.T.: 9.981 min
Delta R.T.: 0.000 min
Response: 2038226
Conc: 50.00 ng/ml



#2 Decachlorobiphenyl

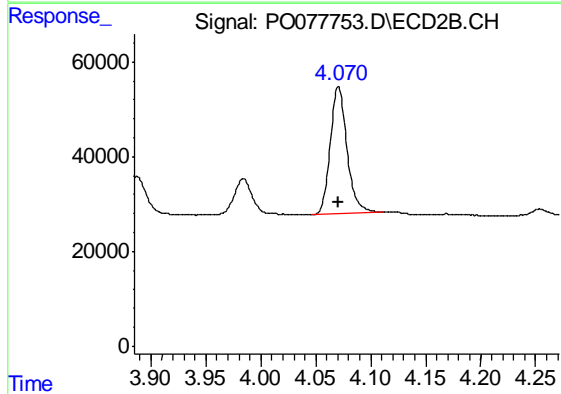
R.T.: 8.832 min
Delta R.T.: 0.000 min
Response: 1177180
Conc: 50.00 ng/ml



#11 AR-1232-1

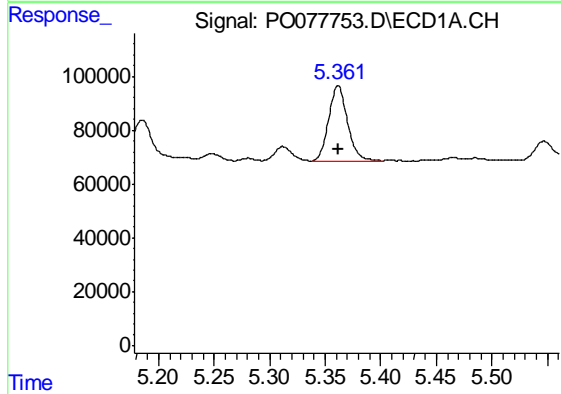
R.T.: 4.787 min
 Delta R.T.: 0.000 min
 Response: 659455
 Conc: 500.00 ng/ml

Instrument :
 ECD_O
 ClientSampleId :
 AR1232ICC500



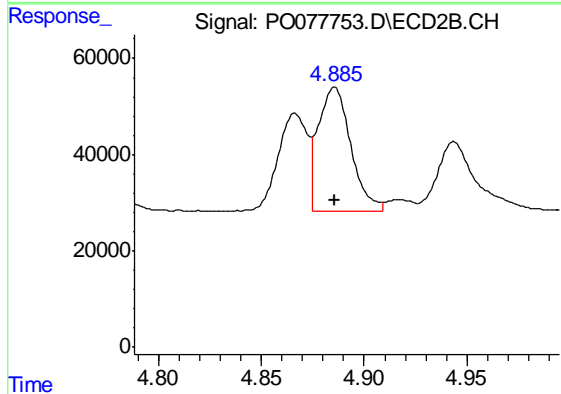
#11 AR-1232-1

R.T.: 4.071 min
 Delta R.T.: 0.000 min
 Response: 286292
 Conc: 500.00 ng/ml



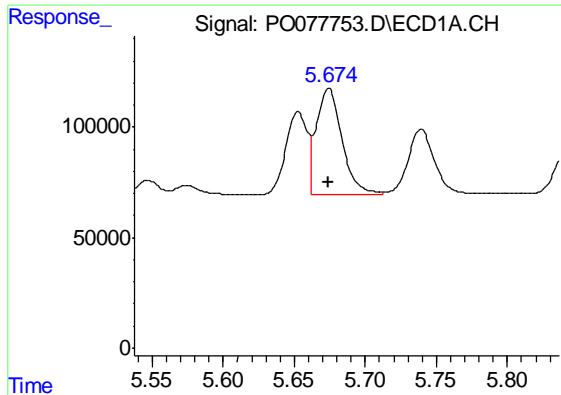
#12 AR-1232-2

R.T.: 5.362 min
 Delta R.T.: 0.000 min
 Response: 333331
 Conc: 500.00 ng/ml



#12 AR-1232-2

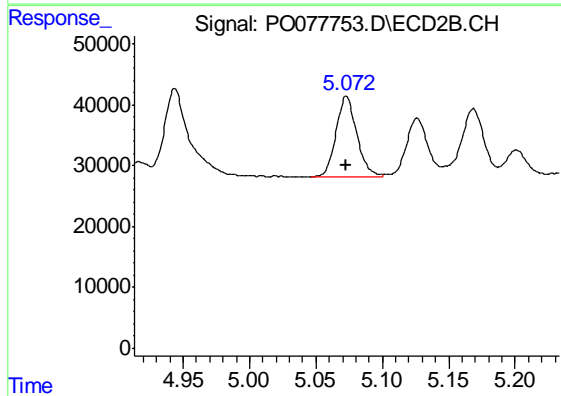
R.T.: 4.886 min
 Delta R.T.: 0.000 min
 Response: 288832
 Conc: 500.00 ng/ml



#13 AR-1232-3

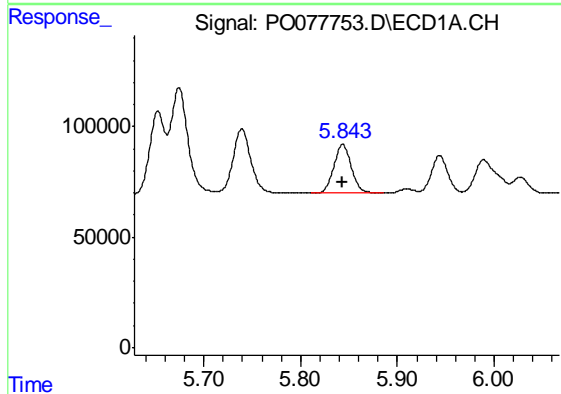
R.T.: 5.674 min
 Delta R.T.: 0.000 min
 Response: 601804
 Conc: 500.00 ng/ml

Instrument :
 ECD_O
 ClientSampleId :
 AR1232ICC500



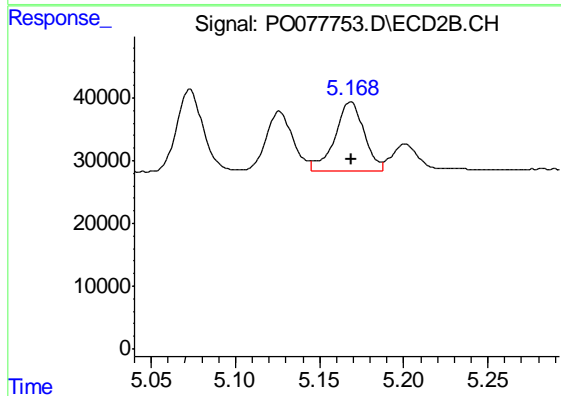
#13 AR-1232-3

R.T.: 5.073 min
 Delta R.T.: 0.000 min
 Response: 142880
 Conc: 500.00 ng/ml



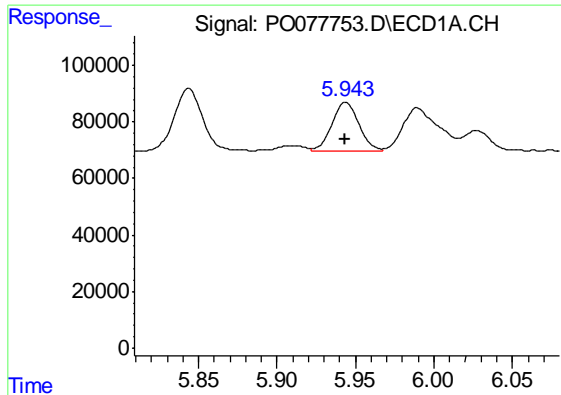
#14 AR-1232-4

R.T.: 5.844 min
 Delta R.T.: 0.000 min
 Response: 276735
 Conc: 500.00 ng/ml



#14 AR-1232-4

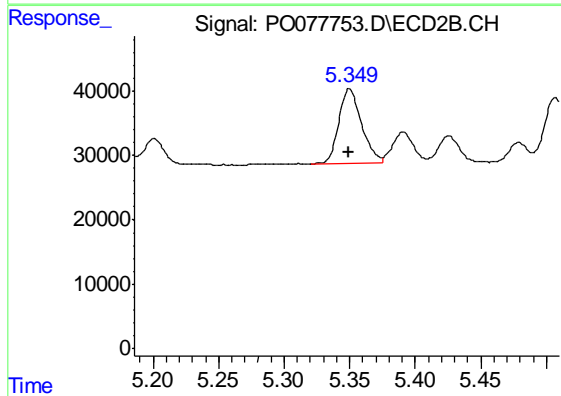
R.T.: 5.168 min
 Delta R.T.: 0.000 min
 Response: 133340
 Conc: 500.00 ng/ml



#15 AR-1232-5

R.T.: 5.944 min
Delta R.T.: 0.000 min
Response: 198577
Conc: 500.00 ng/ml

Instrument :
ECD_O
ClientSampleId :
AR1232ICC500



#15 AR-1232-5

R.T.: 5.350 min
Delta R.T.: 0.000 min
Response: 140338
Conc: 500.00 ng/ml