

Data Path : Z:\pestpcbsrv\HPCHEM1\ECD_0\Data\P0051421\
 Data File : P0077830.D
 Signal(s) : Signal #1: ECD1A.CH Signal #2: ECD2B.CH
 Acq On : 14 May 2021 19:10
 Operator : DD\AJ
 Sample : M2383-08
 Misc :
 ALS Vial : 24 Sample Multiplier: 1

Instrument :
 ECD_0
 ClientSampleId :
 KTW-02

Integration File signal 1: autoint1.e
 Integration File signal 2: autoint2.e
 Quant Time: May 15 02:03:18 2021
 Quant Method : Z:\pestpcbsrv\HPCHEM1\ECD_0\methods\P0051321.M
 Quant Title : GC EXTRACTABLES
 QLast Update : Fri May 14 05:52:29 2021
 Response via : Initial Calibration
 Integrator: ChemStation 6890 Scale Mode: Small noise peaks clipped

Volume Inj. : 2 µl
 Signal #1 Phase : ZB-MR1 Signal #2 Phase: ZB-MR2
 Signal #1 Info : 30Mx0.32mmx 0.50µ Signal #2 Info : 30M x 0.32mm x 0.25µm

Compound	RT#1	RT#2	Resp#1	Resp#2	ng/ml	ng/ml

System Monitoring Compounds						
1) SA Tetrachlo...	4.352	3.631	1846049	481923	31.449	18.940 #
2) SA Decachlor...	9.970	8.826	771489	470371	18.662	19.572

Target Compounds

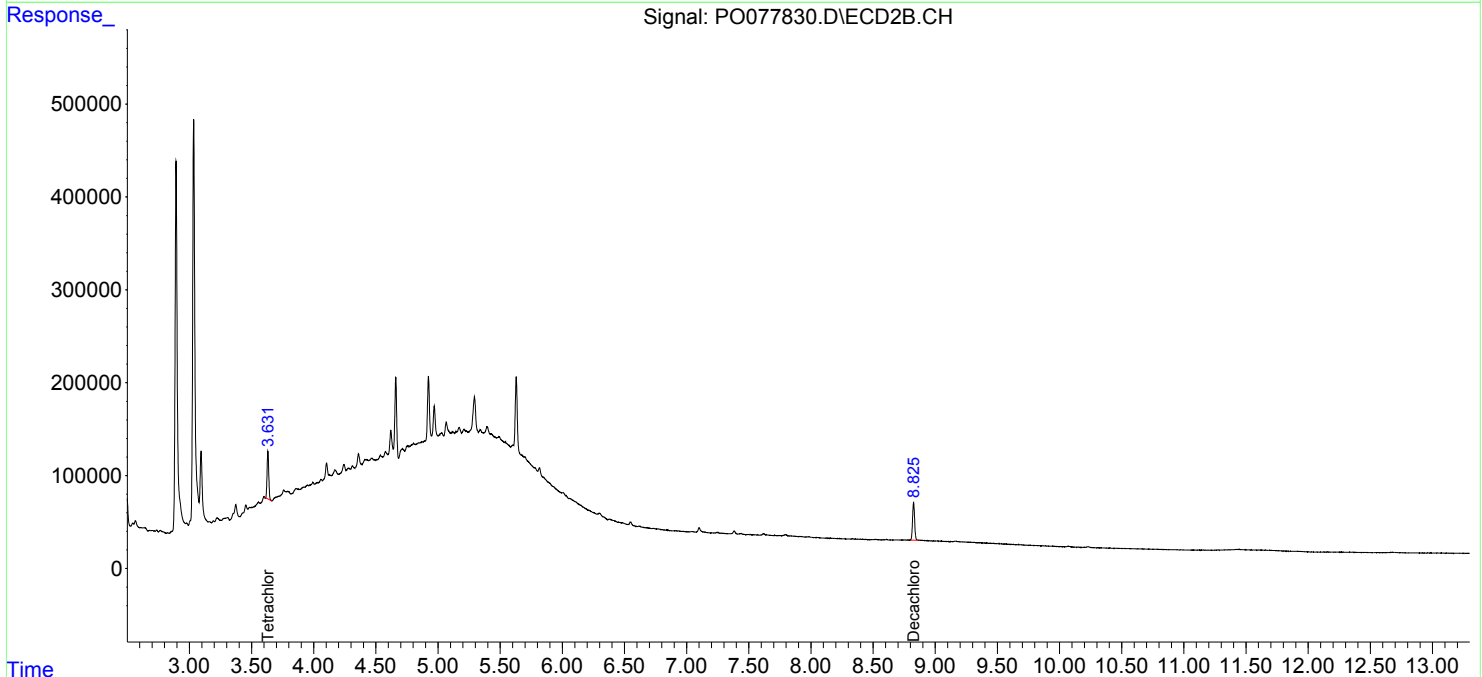
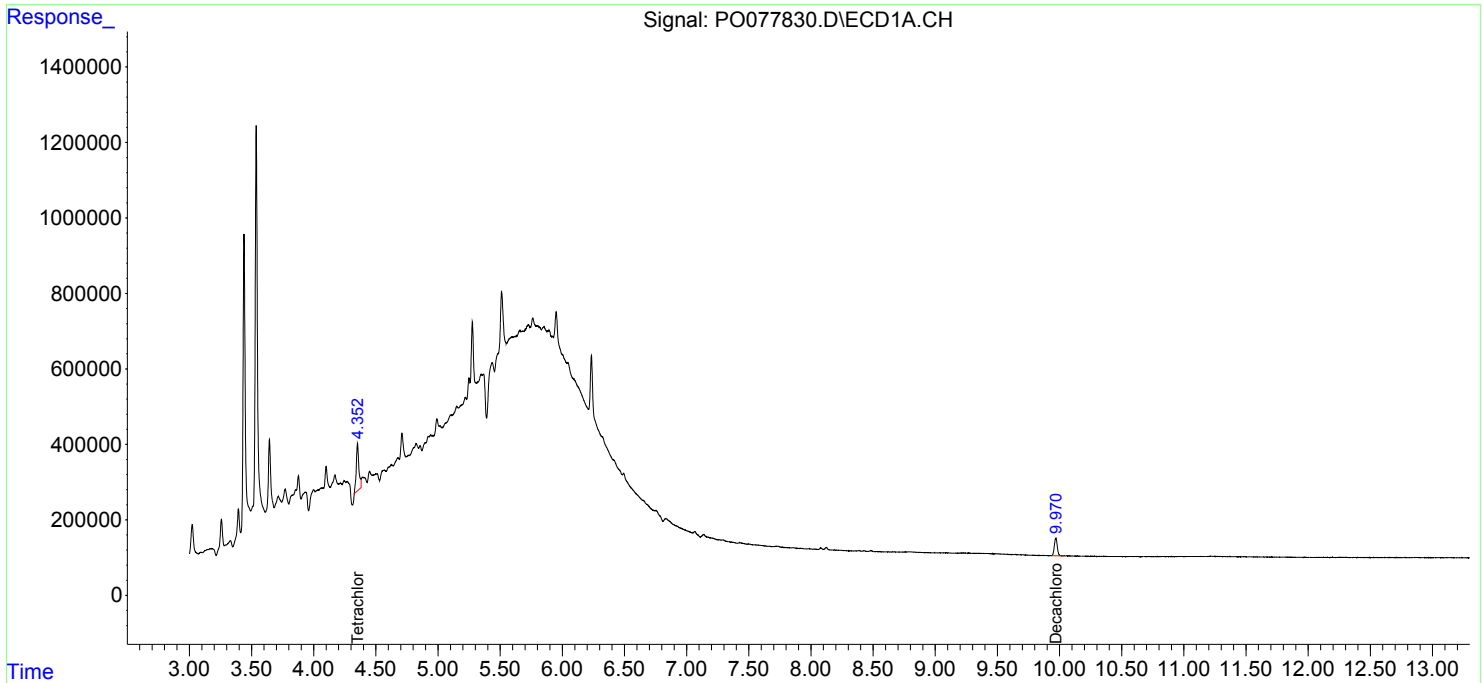
(f)=RT Delta > 1/2 Window (#)=Amounts differ by > 25% (m)=manual int.

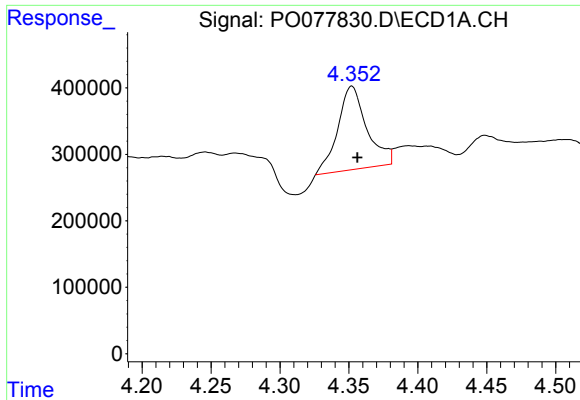
Data Path : Z:\pestpcbsrv\HPCHEM1\ECD_0\Data\P0051421\
 Data File : P0077830.D
 Signal(s) : Signal #1: ECD1A.CH Signal #2: ECD2B.CH
 Acq On : 14 May 2021 19:10
 Operator : DD\AJ
 Sample : M2383-08
 Misc :
 ALS Vial : 24 Sample Multiplier: 1

Instrument :
 ECD_O
 ClientSampled :
 KTW-02

Integration File signal 1: autoint1.e
 Integration File signal 2: autoint2.e
 Quant Time: May 15 02:03:18 2021
 Quant Method : Z:\pestpcbsrv\HPCHEM1\ECD_0\methods\P0051321.M
 Quant Title : GC EXTRACTABLES
 QLast Update : Fri May 14 05:52:29 2021
 Response via : Initial Calibration
 Integrator: ChemStation 6890 Scale Mode: Small noise peaks clipped

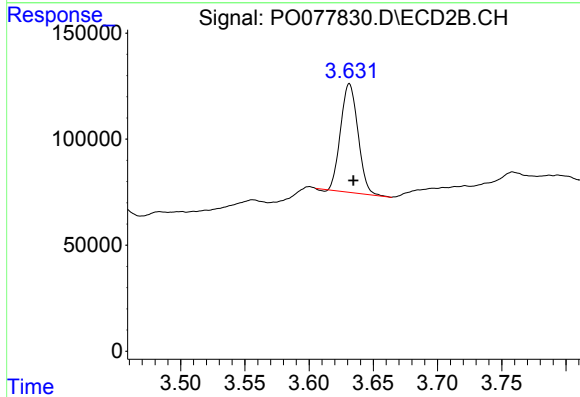
Volume Inj. : 2 µl
 Signal #1 Phase : ZB-MR1 Signal #2 Phase: ZB-MR2
 Signal #1 Info : 30Mx0.32mmx 0.50µ Signal #2 Info : 30M x 0.32mm x 0.25µm



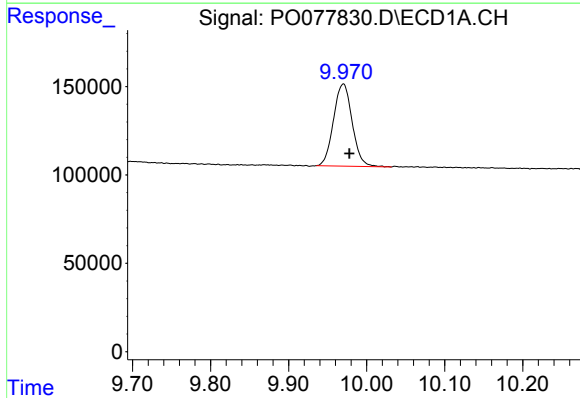


#1 Tetrachloro-m-xylene
 R.T.: 4.352 min
 Delta R.T.: -0.004 min
 Response: 1846049
 Conc: 31.45 ng/ml

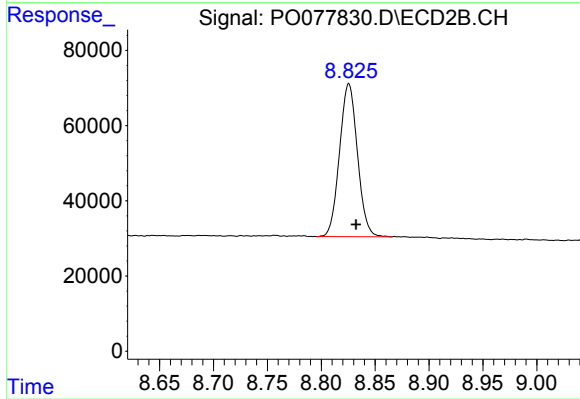
Instrument :
 ECD_O
 ClientSampleId :
 KTW-02



#1 Tetrachloro-m-xylene
 R.T.: 3.631 min
 Delta R.T.: -0.003 min
 Response: 481923
 Conc: 18.94 ng/ml



#2 Decachlorobiphenyl
 R.T.: 9.970 min
 Delta R.T.: -0.007 min
 Response: 771489
 Conc: 18.66 ng/ml



#2 Decachlorobiphenyl
 R.T.: 8.826 min
 Delta R.T.: -0.007 min
 Response: 470371
 Conc: 19.57 ng/ml