

Data Path : Z:\pestpcbsrv\HPCHEM1\ECD_0\Data\P0051424\
 Data File : P0103760.D
 Signal(s) : Signal #1: ECD1A.ch Signal #2: ECD2B.ch
 Acq On : 14 May 2024 22:38
 Operator : YP/AJ
 Sample : P2403-01
 Misc : AR1660 LOD 25 PPB
 ALS Vial : 22 Sample Multiplier: 1

Instrument :
 ECD_0
 ClientSampleId :

Integration File signal 1: autoint1.e
 Integration File signal 2: autoint2.e
 Quant Time: May 15 02:52:06 2024
 Quant Method : Z:\pestpcbsrv\HPCHEM1\ECD_0\methods\P0050624.M
 Quant Title : GC EXTRACTABLES
 QLast Update : Tue May 07 04:55:35 2024
 Response via : Initial Calibration
 Integrator: ChemStation

Volume Inj. : 2 µl
 Signal #1 Phase : ZB-MR1 Signal #2 Phase: ZB-MR2
 Signal #1 Info : 30Mx0.32mmx 0.50µ Signal #2 Info : 30M x 0.32mm x 0.25µm

Compound	RT#1	RT#2	Resp#1	Resp#2	ng/ml	ng/ml
System Monitoring Compounds						
1) SA Tetrachlo...	4.449	3.584	178.1E6	60694177	23.138	24.093
2) SA Decachlor...	10.206	8.540	126.4E6	31083168	26.659	23.894
Target Compounds						
3) L1 AR-1016-1	5.618	4.678	5910920	3540724	24.310	45.123 #
4) L1 AR-1016-2	5.641	4.678	7982392	3540724	23.046	29.562 #
5) L1 AR-1016-3	5.702	4.853	6324394	1620704	30.501	24.251
6) L1 AR-1016-4	5.802	4.897	3793035	1397008	22.249	30.400 #
7) L1 AR-1016-5	6.095	5.106	3278968	1791969	20.699	28.700 #
8) L2 AR-1221-1	4.649	3.797	2237974	212337	25.213	6.895 #
9) L2 AR-1221-2	4.756	3.881	5059865	1124073	75.171	46.216 #
10) L2 AR-1221-3	4.820	3.958	4030796	1138661	20.068	15.887
11) L3 AR-1232-1	4.820	3.958	4030796	1138661	24.273	19.118
12) L3 AR-1232-2	5.351	4.678	4334668	3540724	50.773	61.771
13) L3 AR-1232-3	5.641	4.853	7982392	1620704	48.720	52.340
14) L3 AR-1232-4	5.802	4.936	3793035	1614995	48.085	62.876 #
15) L3 AR-1232-5	5.891	5.106	3283287	1791969	58.072	64.482
16) L4 AR-1242-1	5.618	4.678	5910920	3540724	28.886	53.559 #
17) L4 AR-1242-2	5.641	4.678	7982392	3540724	27.402	35.570 #
18) L4 AR-1242-3	5.702	4.853	6324394	1620704	36.487	29.612
19) L4 AR-1242-4	5.802	4.936	3793035	1614995	26.406	32.511
20) L4 AR-1242-5	6.537	5.454	1441049	1632977	10.064	26.712 #
21) L5 AR-1248-1	5.618	4.661	5910920	1814279	38.517	35.956
22) L5 AR-1248-2	5.891	4.897	3283287	1397008	15.963	21.207 #
23) L5 AR-1248-3	6.095	4.936	3278968	1614995	14.560	22.310 #
24) L5 AR-1248-4	6.498	5.106	1570512	1791969	6.103	21.203 #
25) L5 AR-1248-5	6.537	5.492	1441049	912216	5.915	10.389 #
26) L6 AR-1254-1	6.472	5.454	3246825	1632977	13.185	13.398
27) L6 AR-1254-2	6.690	5.600	2714539	1652395	7.500	15.647 #
28) L6 AR-1254-3	7.056	6.015	1914626	1981081	5.259	11.527 #
29) L6 AR-1254-4	7.340	6.228	606930	271080	2.141	2.630
30) L6 AR-1254-5	7.756	6.639	7552825	3159694	28.342	22.900
31) L7 AR-1260-1	7.218	6.129	5618438	2803045	21.484	26.528
32) L7 AR-1260-2	7.474	6.314	7341881	3206580	22.547	25.618
33) L7 AR-1260-3	7.833	6.467	5410966	3052949	21.826	25.849
34) L7 AR-1260-4	8.058	6.936	5491815	2185353	22.536	24.489
35) L7 AR-1260-5	8.379	7.174	12620347	5082360	23.239	24.535
36) L8 AR-1262-1	7.756	6.639	7552825	3159694	32.802	41.210 #
37) L8 AR-1262-2	8.379	6.936	12620347	2185353	19.441	18.545
38) L8 AR-1262-3	8.706	7.457	7657524	1147867	17.862	12.704 #
39) L8 AR-1262-4	8.788	7.519	5068003	3464199	15.082	20.736 #
40) L8 AR-1262-5	9.445	8.010	3655064	994337	15.413	13.783
41) L9 AR-1268-1	8.706	7.457	7657524	1147867	9.846	4.459 #

Data Path : Z:\pestpcbsrv\HPCHEM1\ECD_0\Data\P0051424\
 Data File : P0103760.D
 Signal(s) : Signal #1: ECD1A.ch Signal #2: ECD2B.ch
 Acq On : 14 May 2024 22:38
 Operator : YP/AJ
 Sample : P2403-01
 Misc : AR1660 LOD 25 PPB
 ALS Vial : 22 Sample Multiplier: 1

Instrument :
 ECD_0
 ClientSampleId :

Integration File signal 1: autoint1.e
 Integration File signal 2: autoint2.e
 Quant Time: May 15 02:52:06 2024
 Quant Method : Z:\pestpcbsrv\HPCHEM1\ECD_0\methods\P0050624.M
 Quant Title : GC EXTRACTABLES
 QLast Update : Tue May 07 04:55:35 2024
 Response via : Initial Calibration
 Integrator: ChemStation

Volume Inj. : 2 µl
 Signal #1 Phase : ZB-MR1 Signal #2 Phase: ZB-MR2
 Signal #1 Info : 30Mx0.32mmx 0.50µ Signal #2 Info : 30M x 0.32mm x 0.25µm

	Compound	RT#1	RT#2	Resp#1	Resp#2	ng/ml	ng/ml
42)	L9 AR-1268-2	8.788	7.519	5068003	3464199	7.091	13.872 #
43)	L9 AR-1268-3	9.016	7.725	333693	222237	0.530	1.105 #
44)	L9 AR-1268-4	9.445	8.292	3655064	304256	14.416	0.562 #
45)	L9 AR-1268-5	9.861	8.540	964448	31083168	0.498	133.551 #

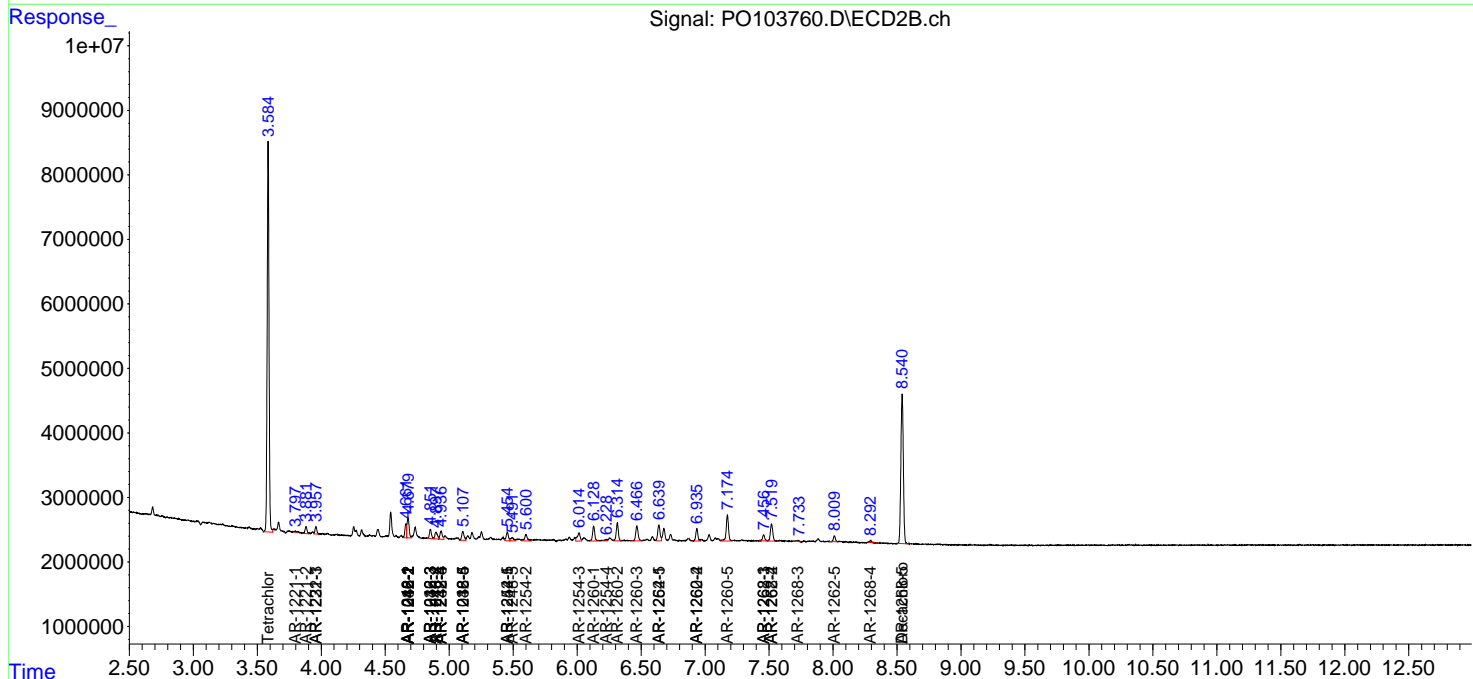
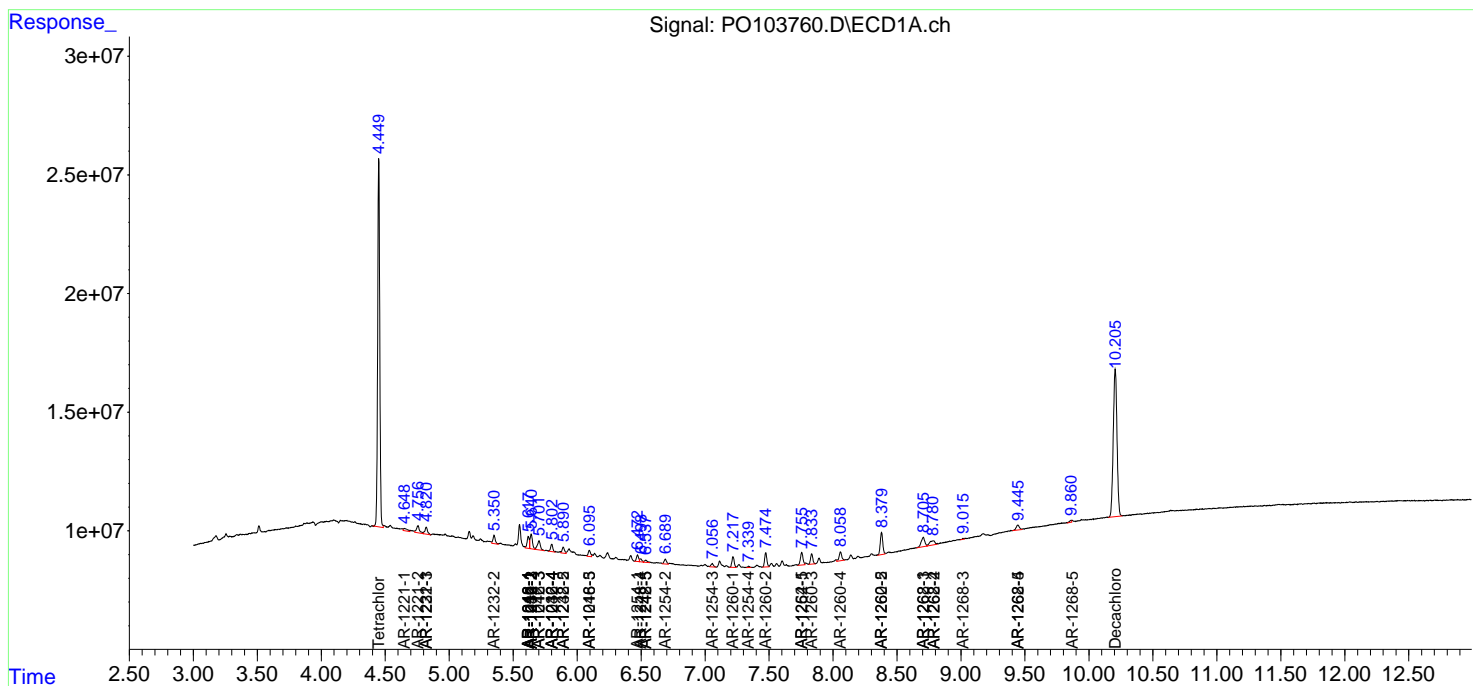
(f)=RT Delta > 1/2 Window (#)=Amounts differ by > 25% (m)=manual int.

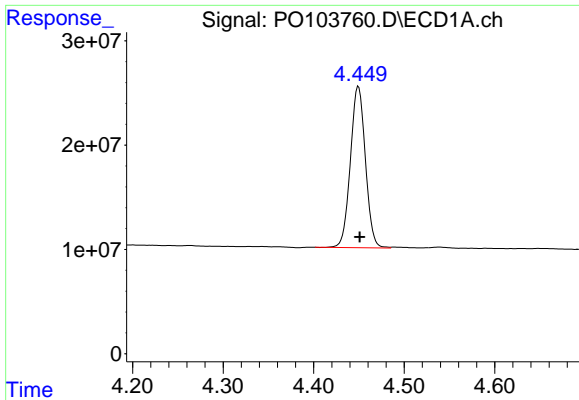
Data Path : Z:\pestpcbsrv\HPCHEM1\ECD_O\Data\PO051424\
 Data File : PO103760.D
 Signal(s) : Signal #1: ECD1A.ch Signal #2: ECD2B.ch
 Acq On : 14 May 2024 22:38
 Operator : YP/AJ
 Sample : P2403-01
 Misc : AR1660 LOD 25 PPB
 ALS Vial : 22 Sample Multiplier: 1

Instrument :
 ECD_O
 ClientSampleId :

Integration File signal 1: autoint1.e
 Integration File signal 2: autoint2.e
 Quant Time: May 15 02:52:06 2024
 Quant Method : Z:\pestpcbsrv\HPCHEM1\ECD_O\methods\PO050624.M
 Quant Title : GC EXTRACTABLES
 QLast Update : Tue May 07 04:55:35 2024
 Response via : Initial Calibration
 Integrator: ChemStation

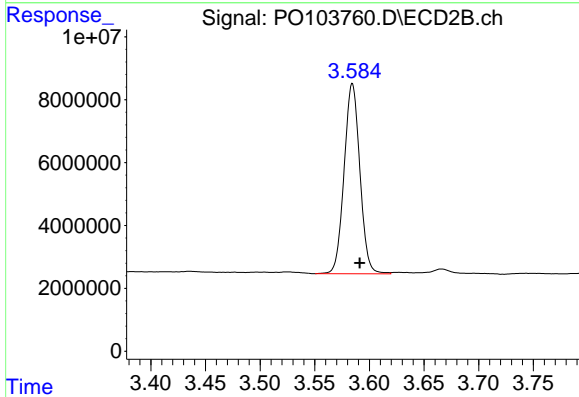
Volume Inj. : 2 µl
 Signal #1 Phase : ZB-MR1 Signal #2 Phase: ZB-MR2
 Signal #1 Info : 30Mx0.32mmx 0.50µ Signal #2 Info : 30M x 0.32mm x 0.25µm



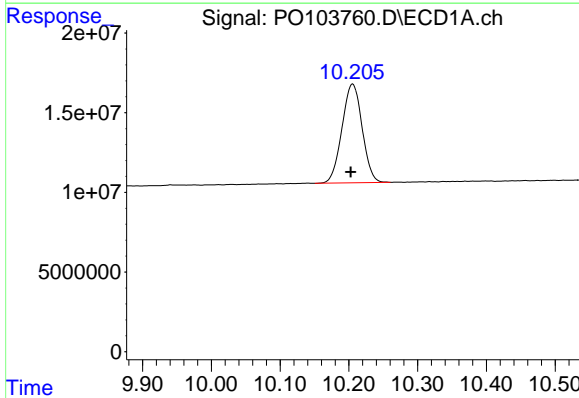


#1 Tetrachloro-m-xylene
 R.T.: 4.449 min
 Delta R.T.: -0.002 min
 Response: 178059429
 Conc: 23.14 ng/ml

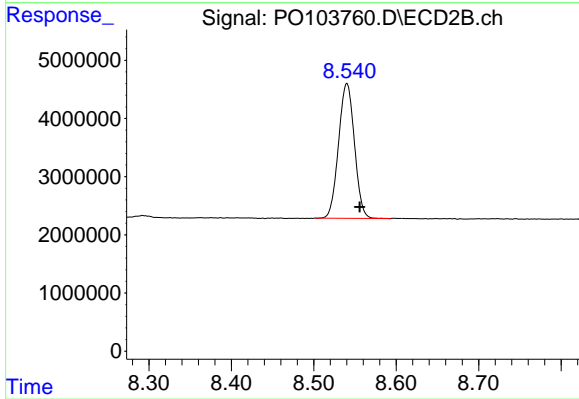
Instrument :
 ECD_O
 ClientSampleId :



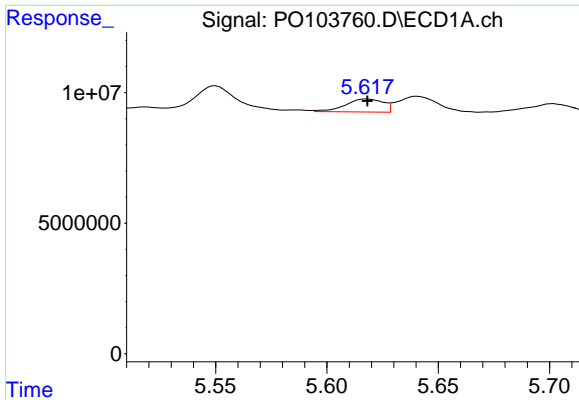
#1 Tetrachloro-m-xylene
 R.T.: 3.584 min
 Delta R.T.: -0.007 min
 Response: 60694177
 Conc: 24.09 ng/ml



#2 Decachlorobiphenyl
 R.T.: 10.206 min
 Delta R.T.: 0.003 min
 Response: 126372287
 Conc: 26.66 ng/ml



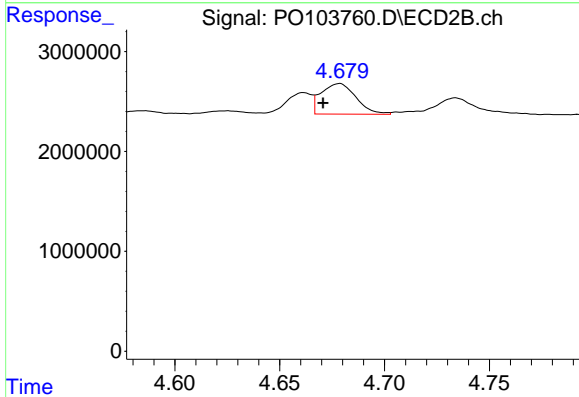
#2 Decachlorobiphenyl
 R.T.: 8.540 min
 Delta R.T.: -0.016 min
 Response: 31083168
 Conc: 23.89 ng/ml



#3 AR-1016-1

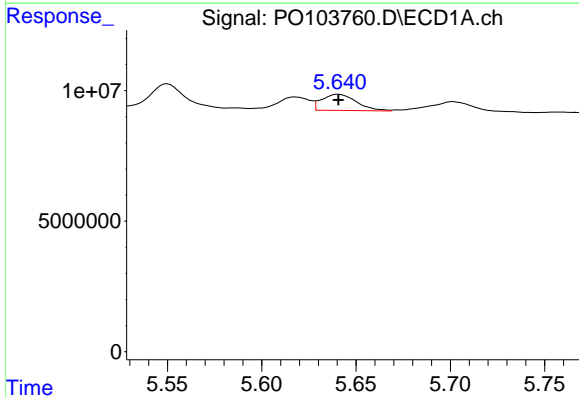
R.T.: 5.618 min
 Delta R.T.: 0.000 min
 Response: 5910920
 Conc: 24.31 ng/ml

Instrument :
 ECD_O
 ClientSampleId :



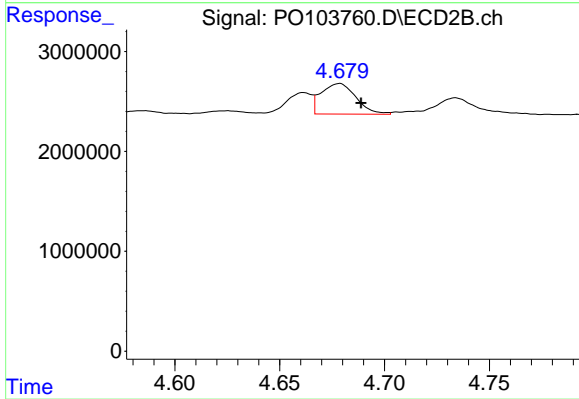
#3 AR-1016-1

R.T.: 4.678 min
 Delta R.T.: 0.008 min
 Response: 3540724
 Conc: 45.12 ng/ml



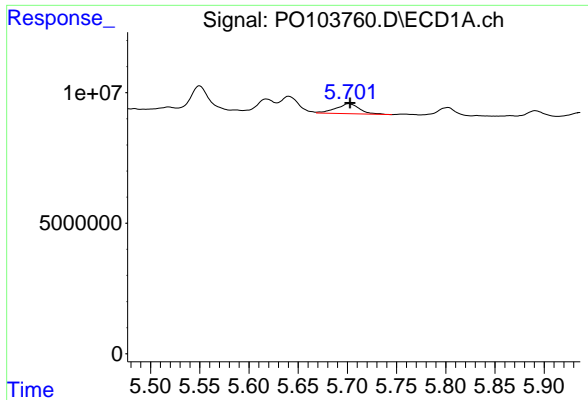
#4 AR-1016-2

R.T.: 5.641 min
 Delta R.T.: 0.000 min
 Response: 7982392
 Conc: 23.05 ng/ml



#4 AR-1016-2

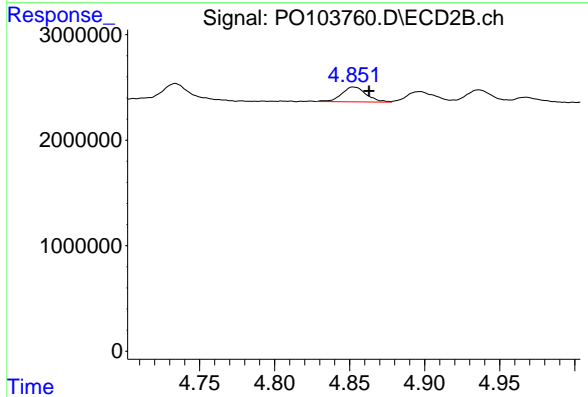
R.T.: 4.678 min
 Delta R.T.: -0.010 min
 Response: 3540724
 Conc: 29.56 ng/ml



#5 AR-1016-3

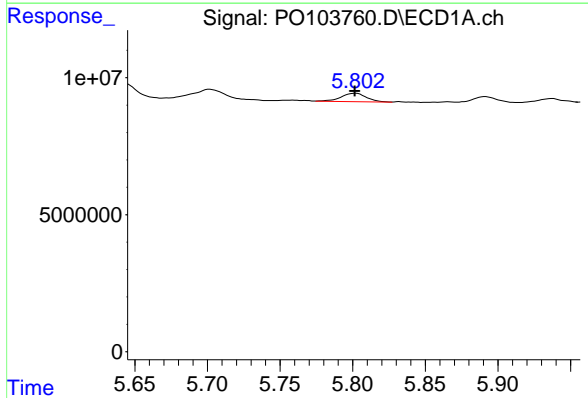
R.T.: 5.702 min
 Delta R.T.: -0.001 min
 Response: 6324394
 Conc: 30.50 ng/ml

Instrument :
 ECD_O
 ClientSampleId :



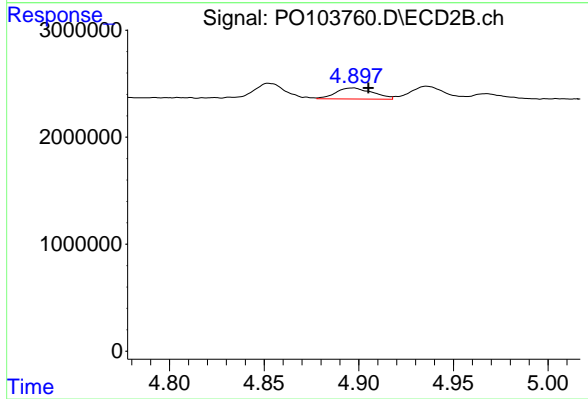
#5 AR-1016-3

R.T.: 4.853 min
 Delta R.T.: -0.010 min
 Response: 1620704
 Conc: 24.25 ng/ml



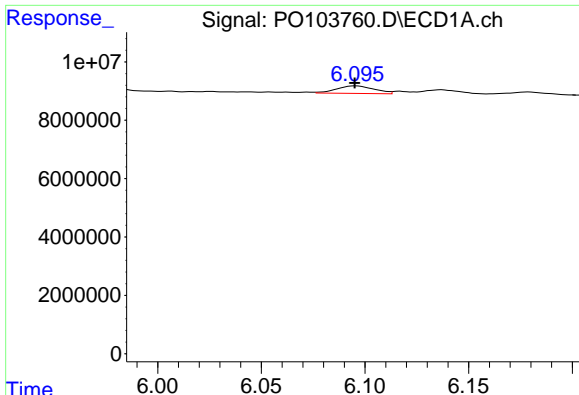
#6 AR-1016-4

R.T.: 5.802 min
 Delta R.T.: 0.000 min
 Response: 3793035
 Conc: 22.25 ng/ml



#6 AR-1016-4

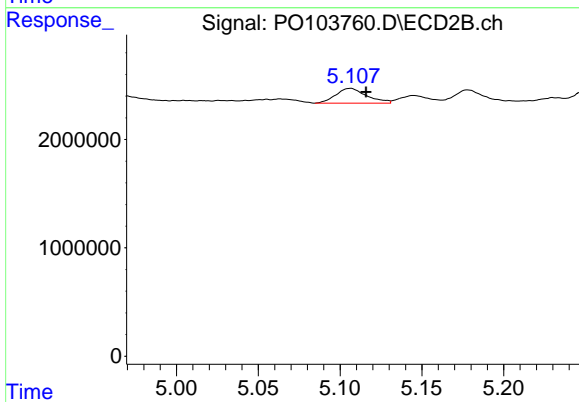
R.T.: 4.897 min
 Delta R.T.: -0.008 min
 Response: 1397008
 Conc: 30.40 ng/ml



#7 AR-1016-5

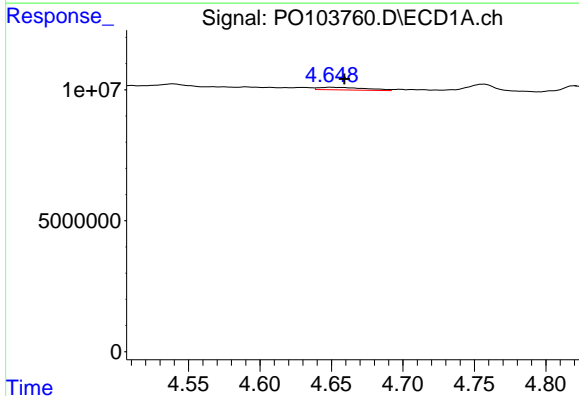
R.T.: 6.095 min
 Delta R.T.: 0.000 min
 Response: 3278968
 Conc: 20.70 ng/ml

Instrument :
 ECD_O
 ClientSampleId :



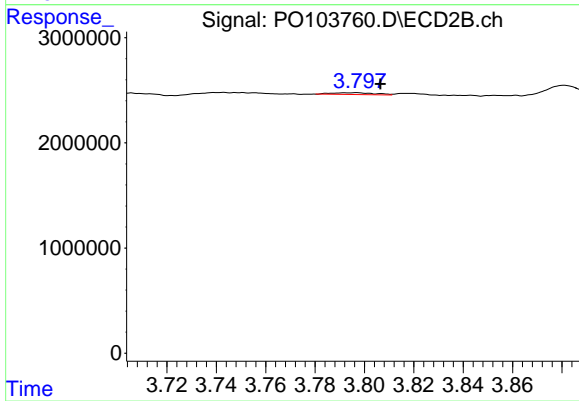
#7 AR-1016-5

R.T.: 5.106 min
 Delta R.T.: -0.010 min
 Response: 1791969
 Conc: 28.70 ng/ml



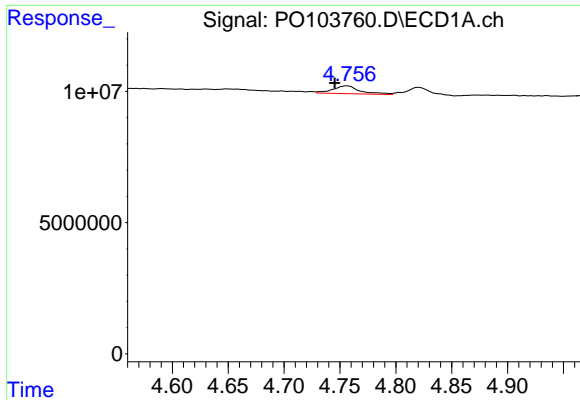
#8 AR-1221-1

R.T.: 4.649 min
 Delta R.T.: -0.010 min
 Response: 2237974
 Conc: 25.21 ng/ml



#8 AR-1221-1

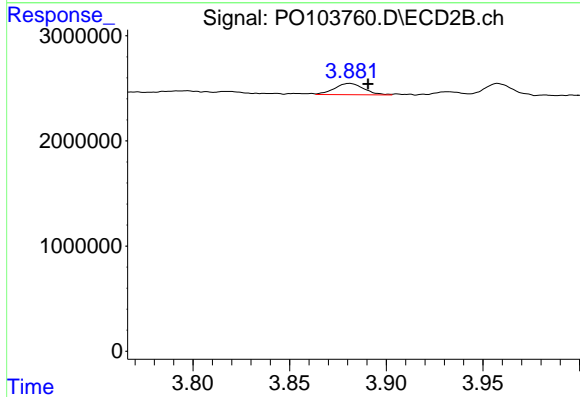
R.T.: 3.797 min
 Delta R.T.: -0.010 min
 Response: 212337
 Conc: 6.89 ng/ml



#9 AR-1221-2

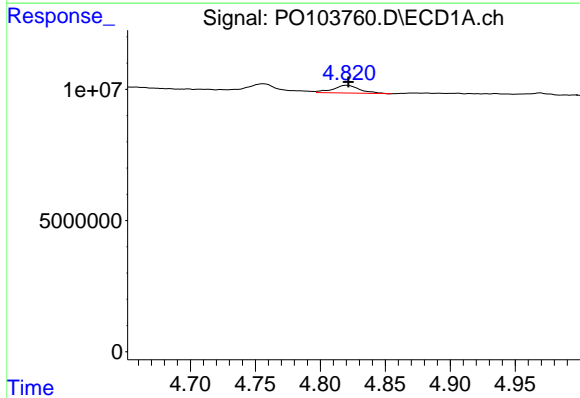
R.T.: 4.756 min
 Delta R.T.: 0.011 min
 Response: 5059865
 Conc: 75.17 ng/ml

Instrument :
 ECD_O
 ClientSampleId :



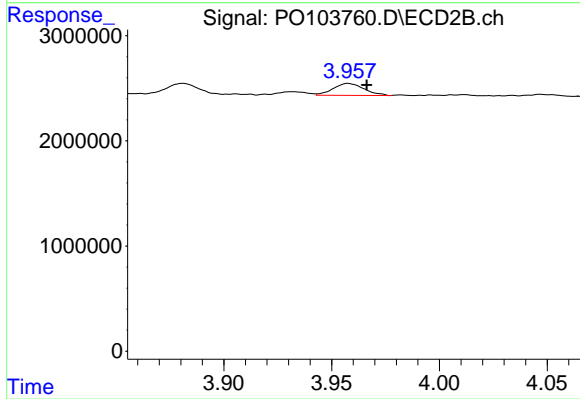
#9 AR-1221-2

R.T.: 3.881 min
 Delta R.T.: -0.010 min
 Response: 1124073
 Conc: 46.22 ng/ml



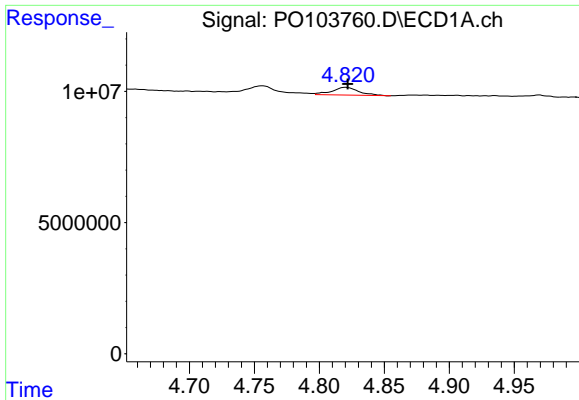
#10 AR-1221-3

R.T.: 4.820 min
 Delta R.T.: -0.001 min
 Response: 4030796
 Conc: 20.07 ng/ml



#10 AR-1221-3

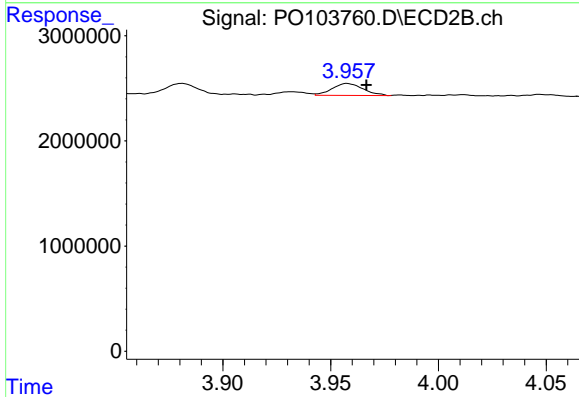
R.T.: 3.958 min
 Delta R.T.: -0.009 min
 Response: 1138661
 Conc: 15.89 ng/ml



#11 AR-1232-1

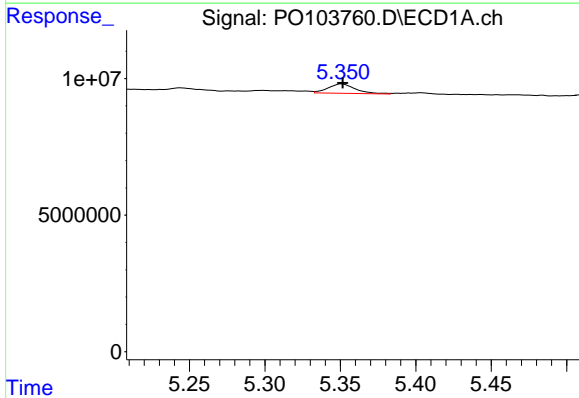
R.T.: 4.820 min
 Delta R.T.: -0.001 min
 Response: 4030796
 Conc: 24.27 ng/ml

Instrument :
 ECD_O
 ClientSampleId :



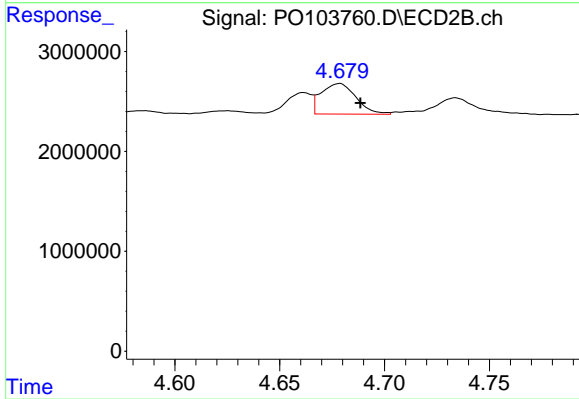
#11 AR-1232-1

R.T.: 3.958 min
 Delta R.T.: -0.009 min
 Response: 1138661
 Conc: 19.12 ng/ml



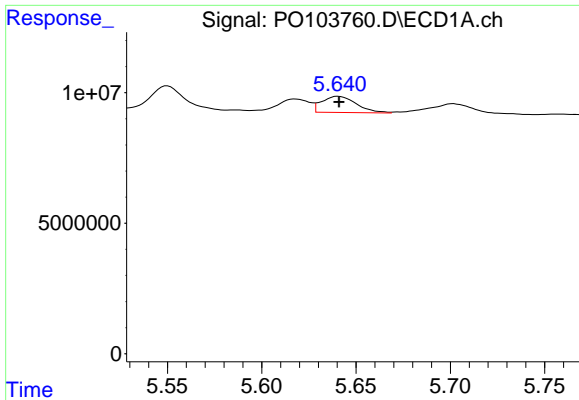
#12 AR-1232-2

R.T.: 5.351 min
 Delta R.T.: 0.000 min
 Response: 4334668
 Conc: 50.77 ng/ml



#12 AR-1232-2

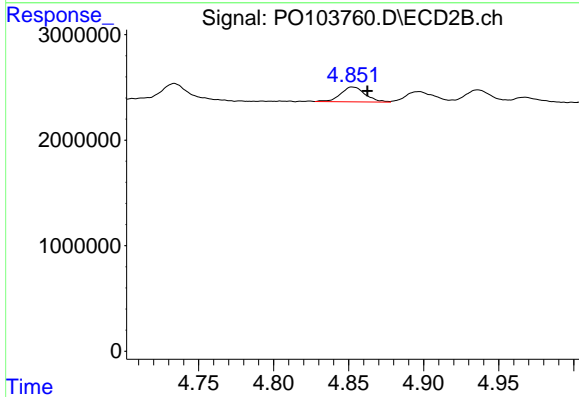
R.T.: 4.678 min
 Delta R.T.: -0.010 min
 Response: 3540724
 Conc: 61.77 ng/ml



#13 AR-1232-3

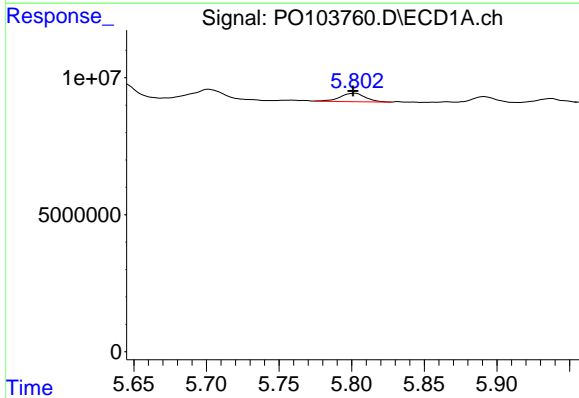
R.T.: 5.641 min
 Delta R.T.: 0.000 min
 Response: 7982392
 Conc: 48.72 ng/ml

Instrument :
 ECD_O
 ClientSampleId :



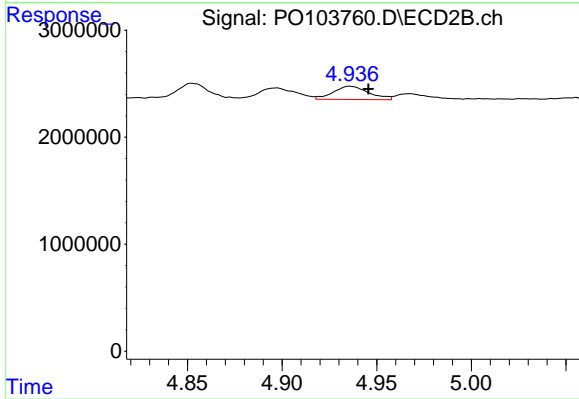
#13 AR-1232-3

R.T.: 4.853 min
 Delta R.T.: -0.010 min
 Response: 1620704
 Conc: 52.34 ng/ml



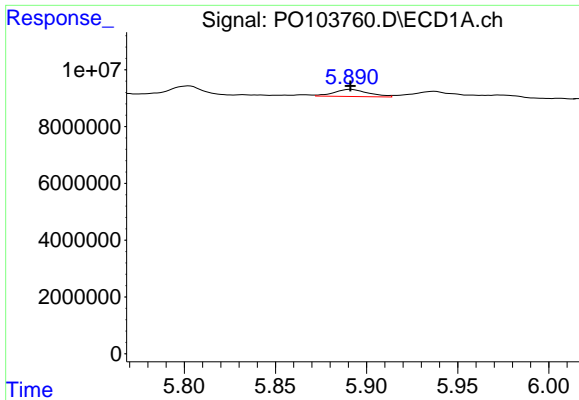
#14 AR-1232-4

R.T.: 5.802 min
 Delta R.T.: 0.001 min
 Response: 3793035
 Conc: 48.08 ng/ml



#14 AR-1232-4

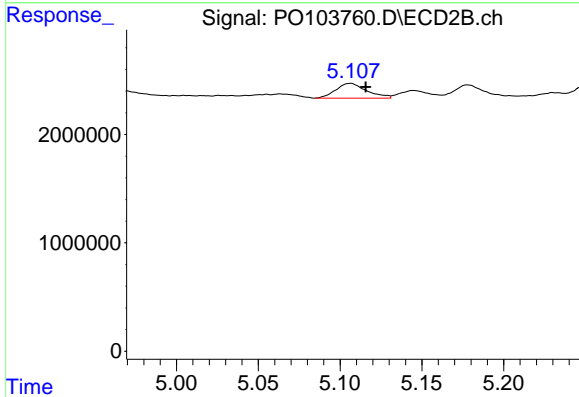
R.T.: 4.936 min
 Delta R.T.: -0.010 min
 Response: 1614995
 Conc: 62.88 ng/ml



#15 AR-1232-5

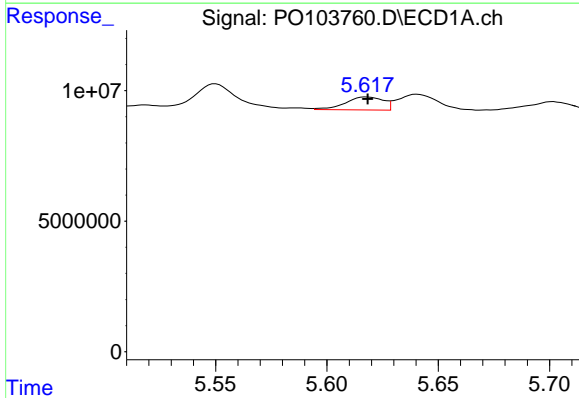
R.T.: 5.891 min
 Delta R.T.: 0.000 min
 Response: 3283287
 Conc: 58.07 ng/ml

Instrument :
 ECD_O
 ClientSampleId :



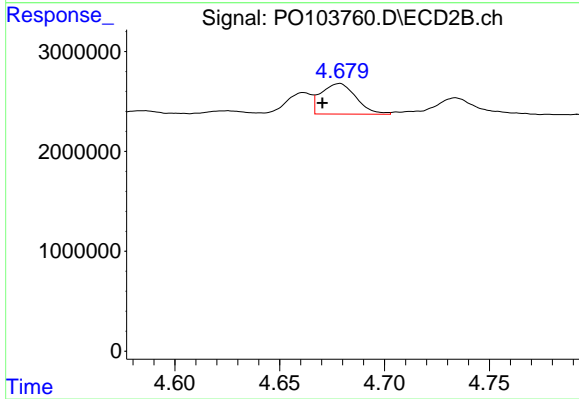
#15 AR-1232-5

R.T.: 5.106 min
 Delta R.T.: -0.009 min
 Response: 1791969
 Conc: 64.48 ng/ml



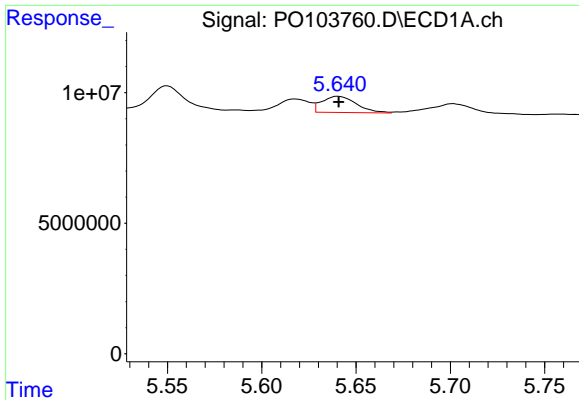
#16 AR-1242-1

R.T.: 5.618 min
 Delta R.T.: 0.000 min
 Response: 5910920
 Conc: 28.89 ng/ml



#16 AR-1242-1

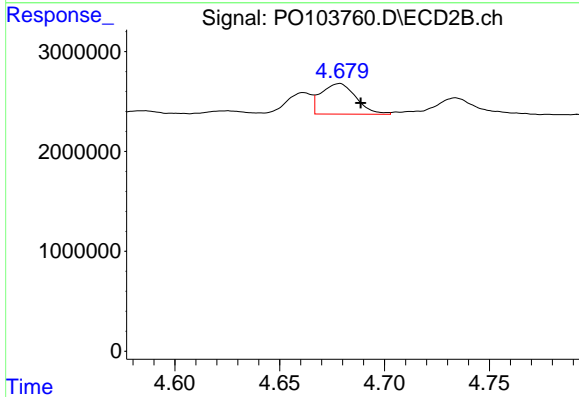
R.T.: 4.678 min
 Delta R.T.: 0.008 min
 Response: 3540724
 Conc: 53.56 ng/ml



#17 AR-1242-2

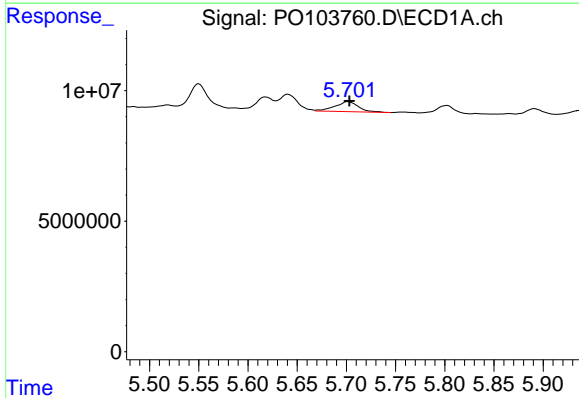
R.T.: 5.641 min
 Delta R.T.: 0.000 min
 Response: 7982392
 Conc: 27.40 ng/ml

Instrument :
 ECD_O
 ClientSampleId :



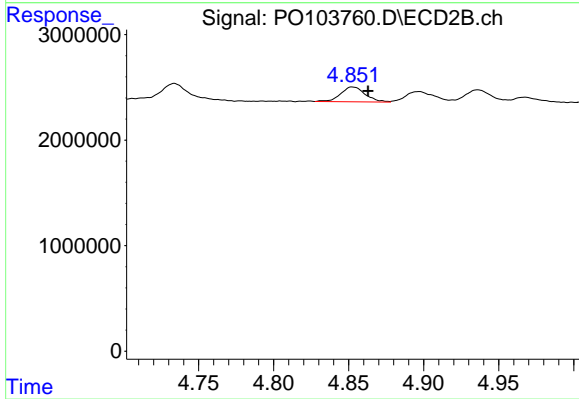
#17 AR-1242-2

R.T.: 4.678 min
 Delta R.T.: -0.010 min
 Response: 3540724
 Conc: 35.57 ng/ml



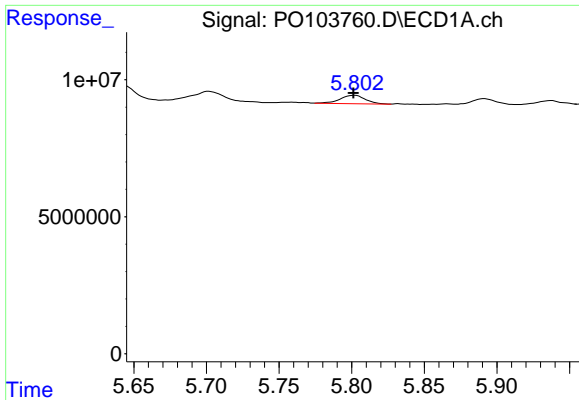
#18 AR-1242-3

R.T.: 5.702 min
 Delta R.T.: -0.002 min
 Response: 6324394
 Conc: 36.49 ng/ml



#18 AR-1242-3

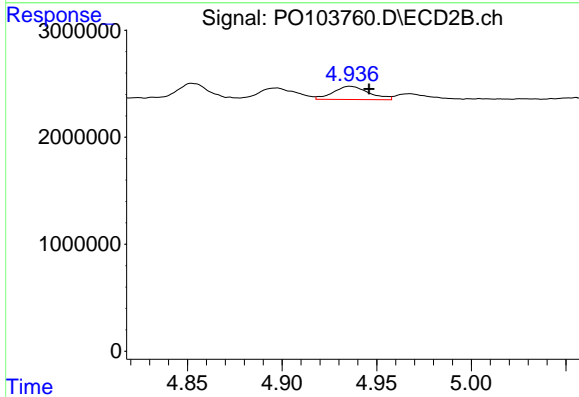
R.T.: 4.853 min
 Delta R.T.: -0.010 min
 Response: 1620704
 Conc: 29.61 ng/ml



#19 AR-1242-4

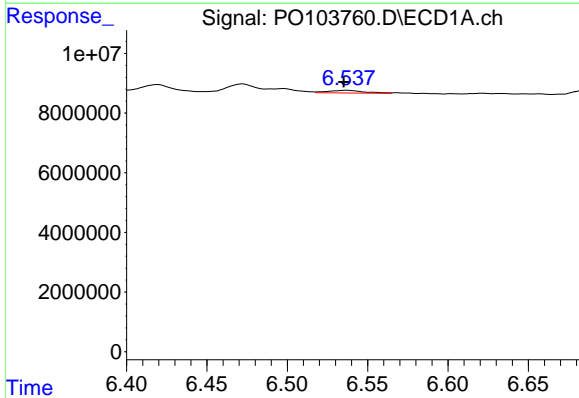
R.T.: 5.802 min
 Delta R.T.: 0.001 min
 Response: 3793035
 Conc: 26.41 ng/ml

Instrument :
 ECD_O
 ClientSampleId :



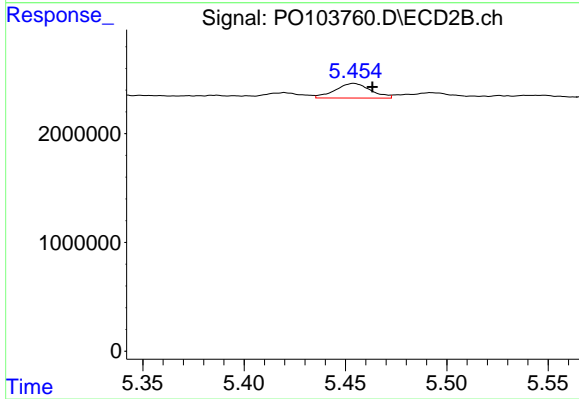
#19 AR-1242-4

R.T.: 4.936 min
 Delta R.T.: -0.010 min
 Response: 1614995
 Conc: 32.51 ng/ml



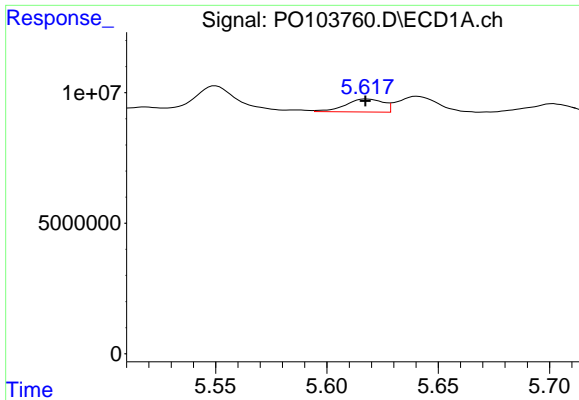
#20 AR-1242-5

R.T.: 6.537 min
 Delta R.T.: 0.002 min
 Response: 1441049
 Conc: 10.06 ng/ml



#20 AR-1242-5

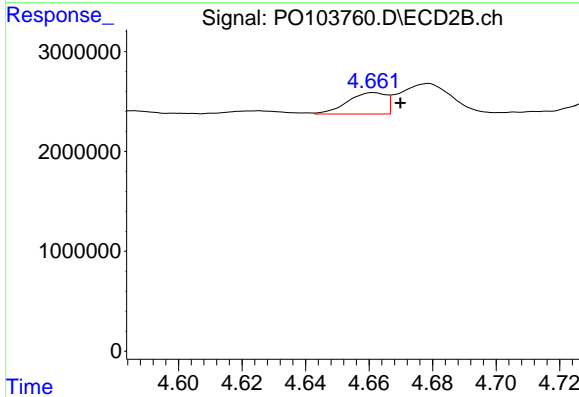
R.T.: 5.454 min
 Delta R.T.: -0.009 min
 Response: 1632977
 Conc: 26.71 ng/ml



#21 AR-1248-1

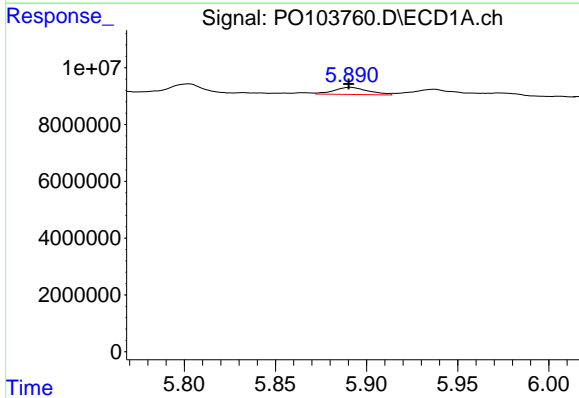
R.T.: 5.618 min
 Delta R.T.: 0.000 min
 Response: 5910920
 Conc: 38.52 ng/ml

Instrument :
 ECD_O
 ClientSampleId :



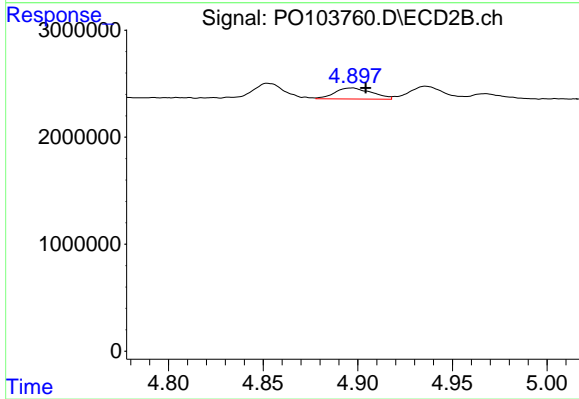
#21 AR-1248-1

R.T.: 4.661 min
 Delta R.T.: -0.008 min
 Response: 1814279
 Conc: 35.96 ng/ml



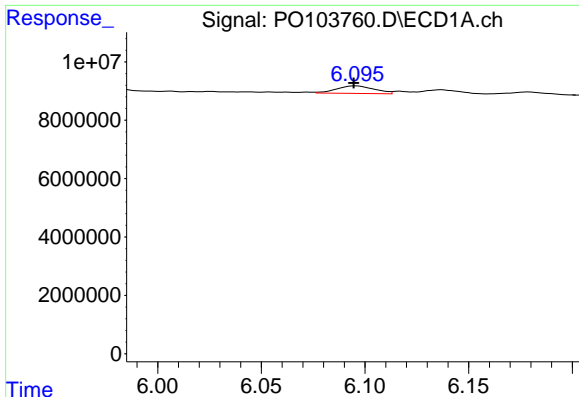
#22 AR-1248-2

R.T.: 5.891 min
 Delta R.T.: 0.000 min
 Response: 3283287
 Conc: 15.96 ng/ml



#22 AR-1248-2

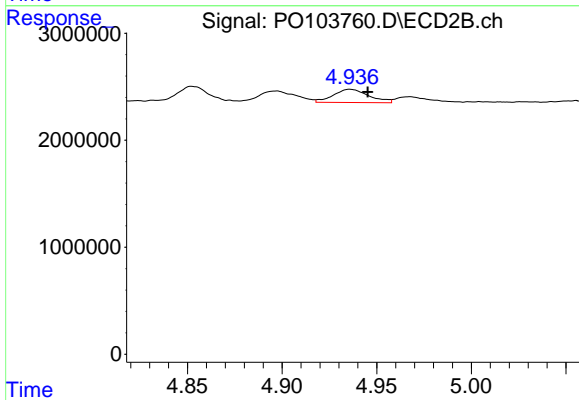
R.T.: 4.897 min
 Delta R.T.: -0.007 min
 Response: 1397008
 Conc: 21.21 ng/ml



#23 AR-1248-3

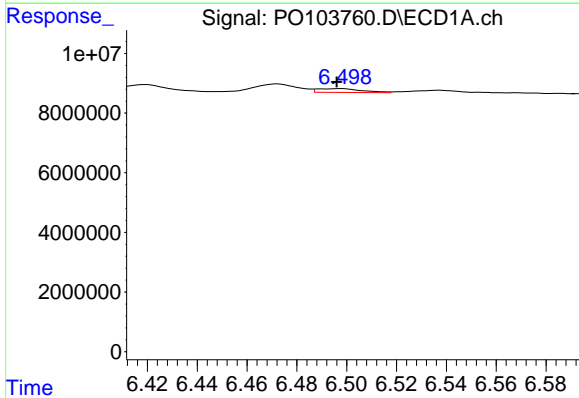
R.T.: 6.095 min
 Delta R.T.: 0.000 min
 Response: 3278968
 Conc: 14.56 ng/ml

Instrument :
 ECD_O
 ClientSampleId :



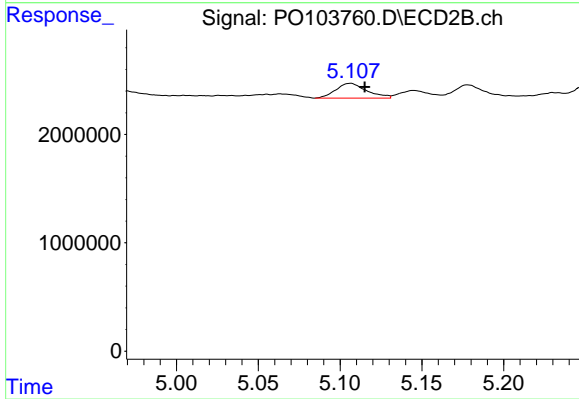
#23 AR-1248-3

R.T.: 4.936 min
 Delta R.T.: -0.009 min
 Response: 1614995
 Conc: 22.31 ng/ml



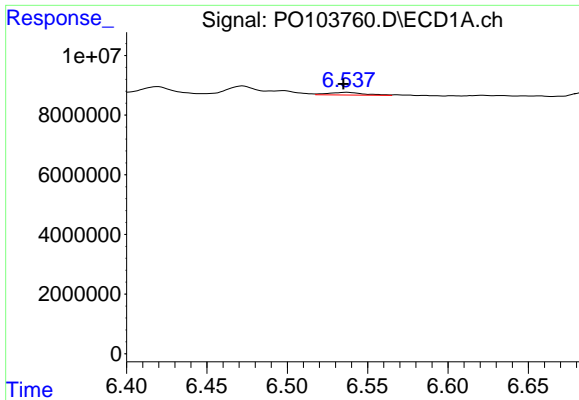
#24 AR-1248-4

R.T.: 6.498 min
 Delta R.T.: 0.002 min
 Response: 1570512
 Conc: 6.10 ng/ml



#24 AR-1248-4

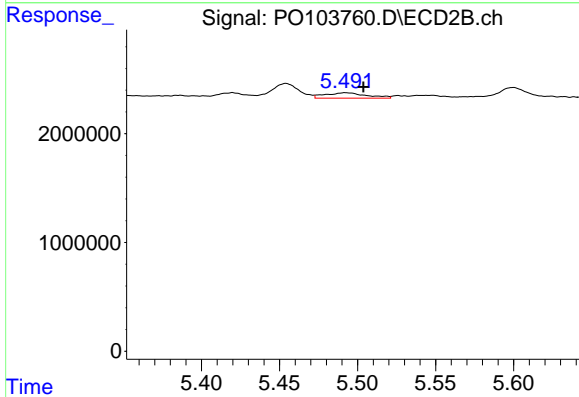
R.T.: 5.106 min
 Delta R.T.: -0.009 min
 Response: 1791969
 Conc: 21.20 ng/ml



#25 AR-1248-5

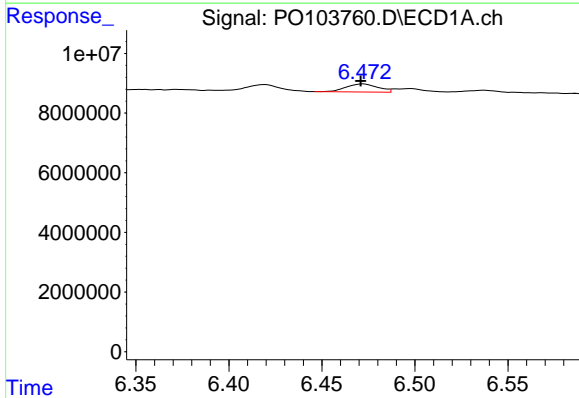
R.T.: 6.537 min
 Delta R.T.: 0.002 min
 Response: 1441049
 Conc: 5.91 ng/ml

Instrument :
 ECD_O
 ClientSampleId :



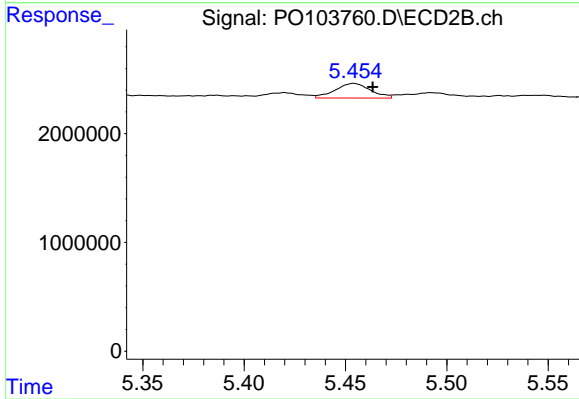
#25 AR-1248-5

R.T.: 5.492 min
 Delta R.T.: -0.011 min
 Response: 912216
 Conc: 10.39 ng/ml



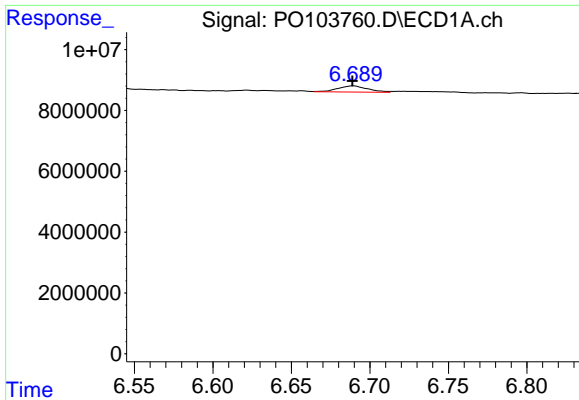
#26 AR-1254-1

R.T.: 6.472 min
 Delta R.T.: 0.001 min
 Response: 3246825
 Conc: 13.18 ng/ml



#26 AR-1254-1

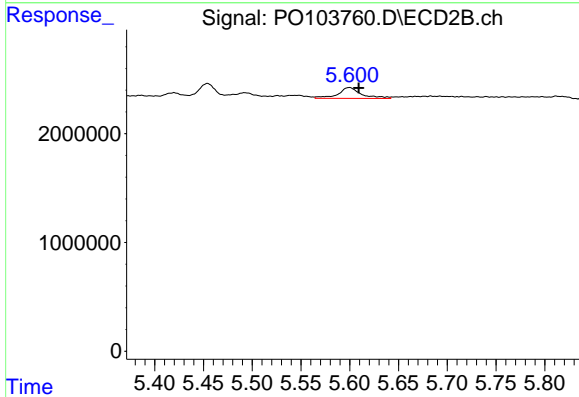
R.T.: 5.454 min
 Delta R.T.: -0.009 min
 Response: 1632977
 Conc: 13.40 ng/ml



#27 AR-1254-2

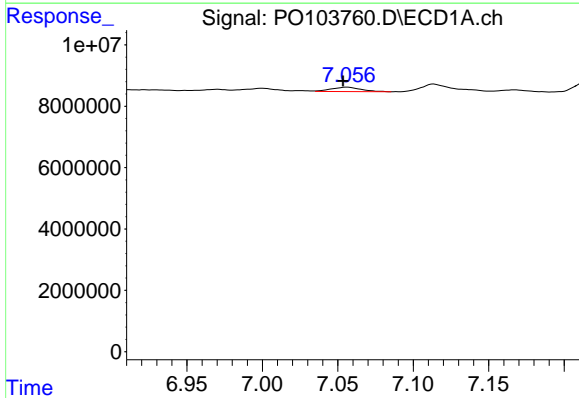
R.T.: 6.690 min
 Delta R.T.: 0.000 min
 Response: 2714539
 Conc: 7.50 ng/ml

Instrument :
 ECD_O
 ClientSampleId :



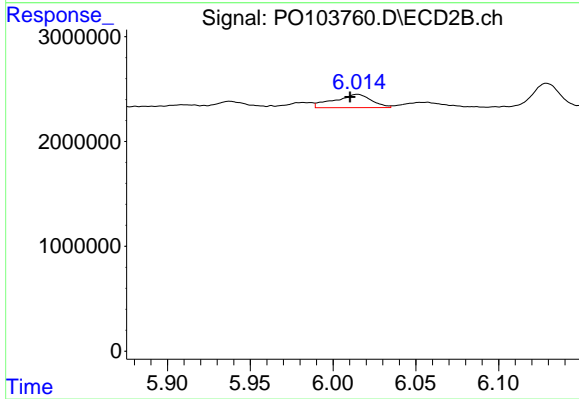
#27 AR-1254-2

R.T.: 5.600 min
 Delta R.T.: -0.010 min
 Response: 1652395
 Conc: 15.65 ng/ml



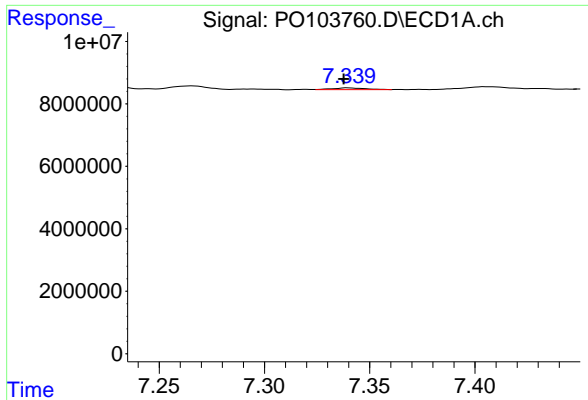
#28 AR-1254-3

R.T.: 7.056 min
 Delta R.T.: 0.003 min
 Response: 1914626
 Conc: 5.26 ng/ml



#28 AR-1254-3

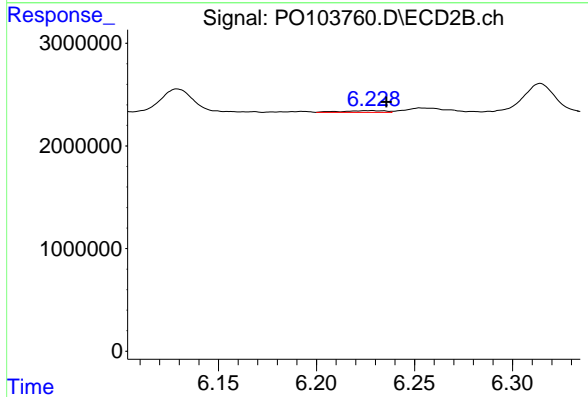
R.T.: 6.015 min
 Delta R.T.: 0.004 min
 Response: 1981081
 Conc: 11.53 ng/ml



#29 AR-1254-4

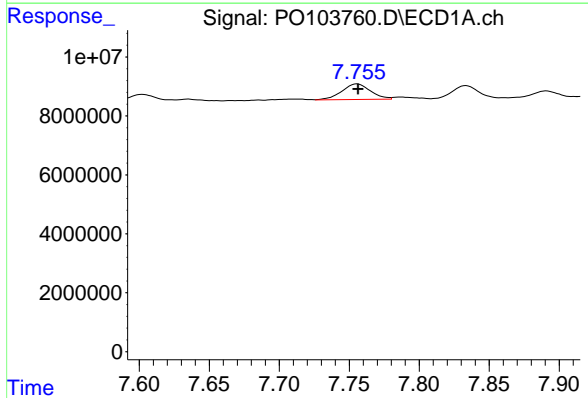
R.T.: 7.340 min
 Delta R.T.: 0.002 min
 Response: 606930
 Conc: 2.14 ng/ml

Instrument :
 ECD_O
 ClientSampleId :



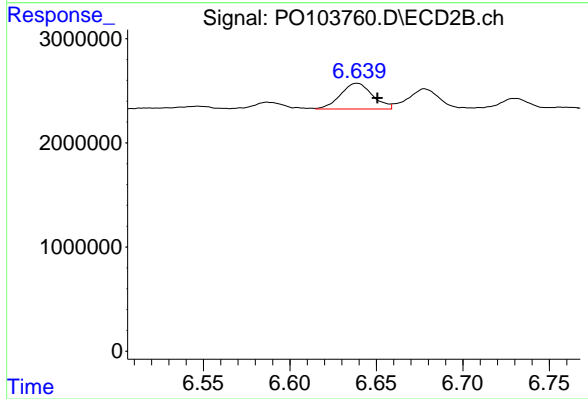
#29 AR-1254-4

R.T.: 6.228 min
 Delta R.T.: -0.008 min
 Response: 271080
 Conc: 2.63 ng/ml



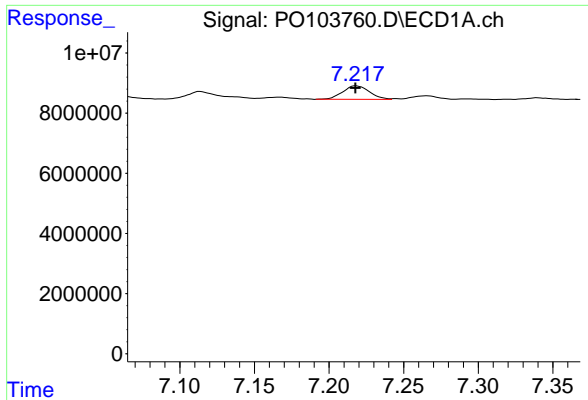
#30 AR-1254-5

R.T.: 7.756 min
 Delta R.T.: 0.000 min
 Response: 7552825
 Conc: 28.34 ng/ml



#30 AR-1254-5

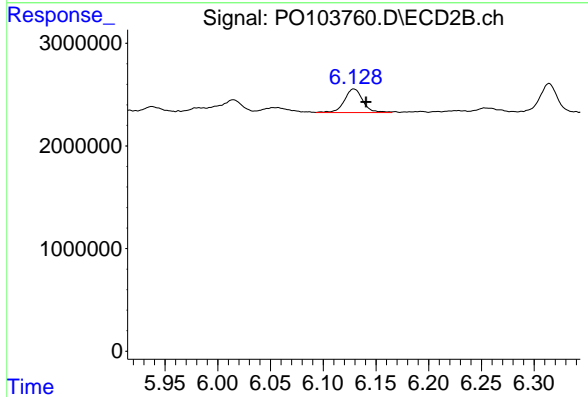
R.T.: 6.639 min
 Delta R.T.: -0.012 min
 Response: 3159694
 Conc: 22.90 ng/ml



#31 AR-1260-1

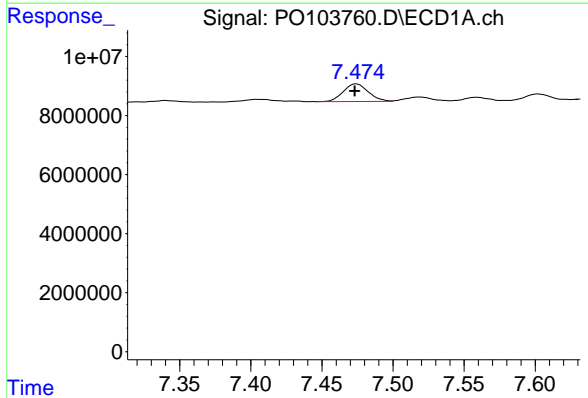
R.T.: 7.218 min
 Delta R.T.: 0.000 min
 Response: 5618438
 Conc: 21.48 ng/ml

Instrument :
 ECD_O
 ClientSampleId :



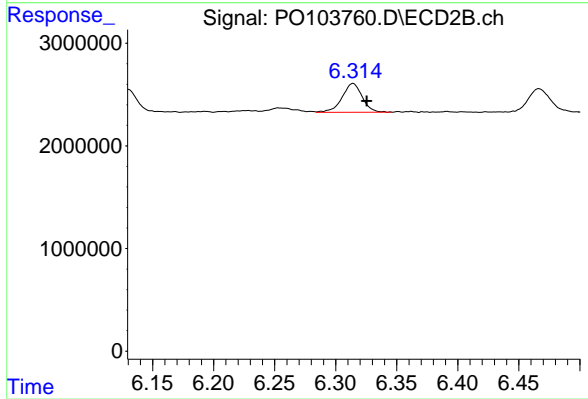
#31 AR-1260-1

R.T.: 6.129 min
 Delta R.T.: -0.011 min
 Response: 2803045
 Conc: 26.53 ng/ml



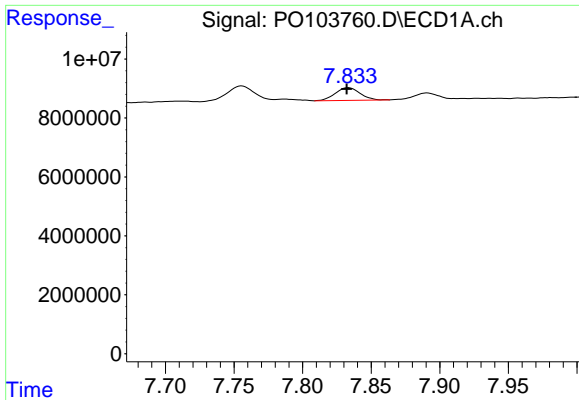
#32 AR-1260-2

R.T.: 7.474 min
 Delta R.T.: 0.001 min
 Response: 7341881
 Conc: 22.55 ng/ml



#32 AR-1260-2

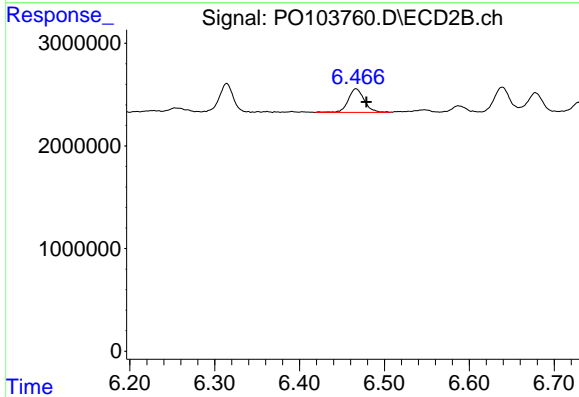
R.T.: 6.314 min
 Delta R.T.: -0.011 min
 Response: 3206580
 Conc: 25.62 ng/ml



#33 AR-1260-3

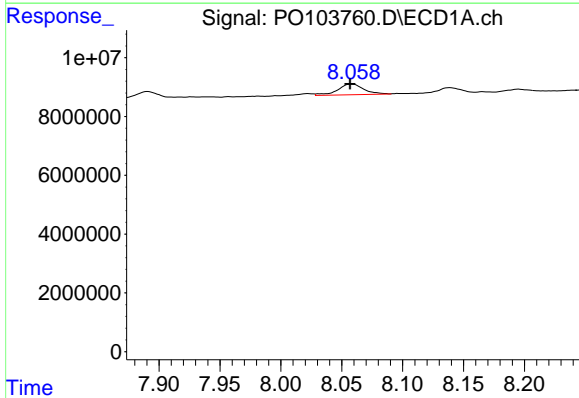
R.T.: 7.833 min
 Delta R.T.: 0.001 min
 Response: 5410966
 Conc: 21.83 ng/ml

Instrument :
 ECD_O
 ClientSampleId :



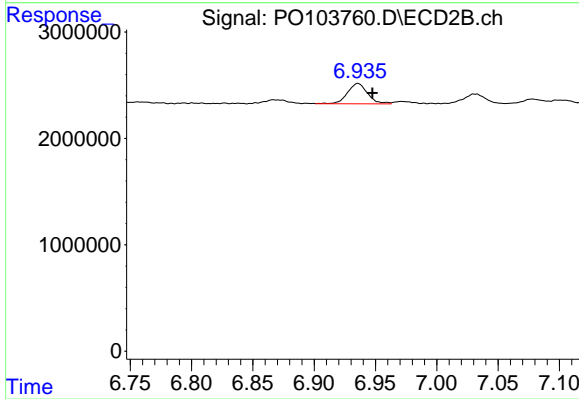
#33 AR-1260-3

R.T.: 6.467 min
 Delta R.T.: -0.012 min
 Response: 3052949
 Conc: 25.85 ng/ml



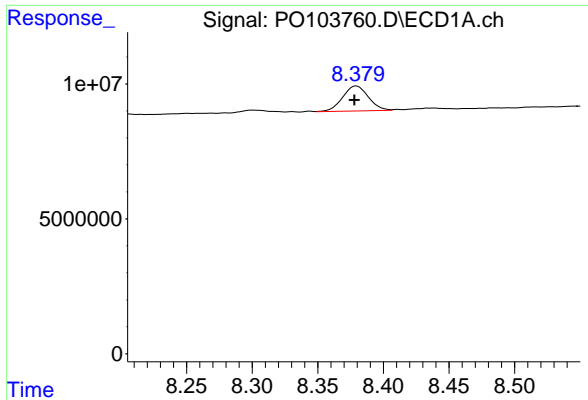
#34 AR-1260-4

R.T.: 8.058 min
 Delta R.T.: 0.001 min
 Response: 5491815
 Conc: 22.54 ng/ml



#34 AR-1260-4

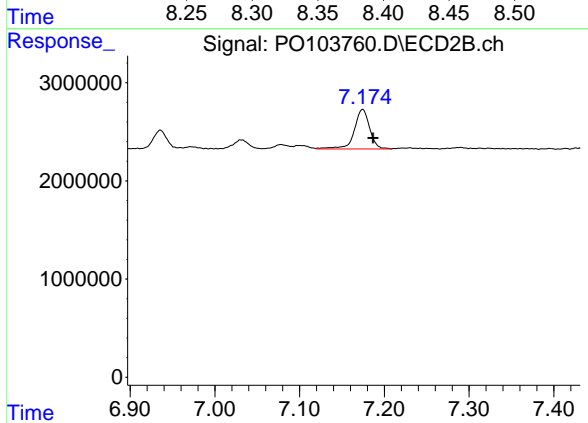
R.T.: 6.936 min
 Delta R.T.: -0.012 min
 Response: 2185353
 Conc: 24.49 ng/ml



#35 AR-1260-5

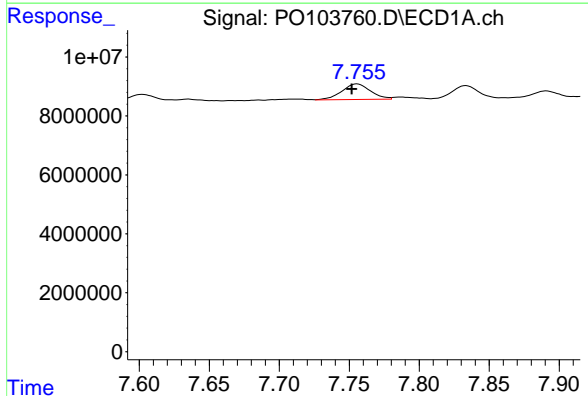
R.T.: 8.379 min
 Delta R.T.: 0.001 min
 Response: 12620347
 Conc: 23.24 ng/ml

Instrument :
 ECD_O
 ClientSampleId :



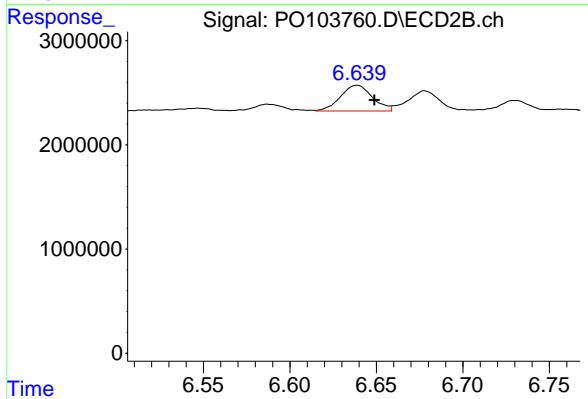
#35 AR-1260-5

R.T.: 7.174 min
 Delta R.T.: -0.012 min
 Response: 5082360
 Conc: 24.53 ng/ml



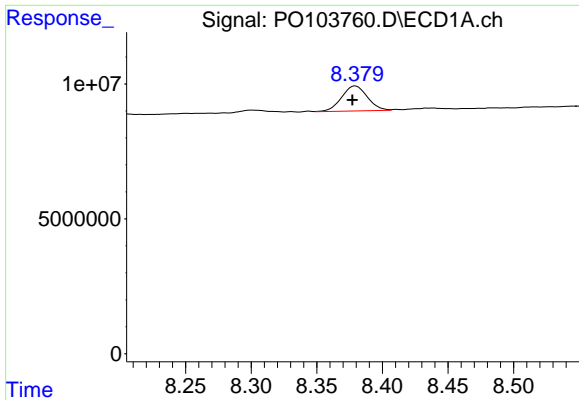
#36 AR-1262-1

R.T.: 7.756 min
 Delta R.T.: 0.004 min
 Response: 7552825
 Conc: 32.80 ng/ml



#36 AR-1262-1

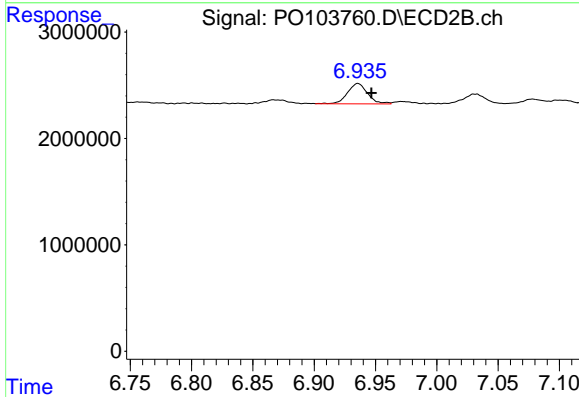
R.T.: 6.639 min
 Delta R.T.: -0.010 min
 Response: 3159694
 Conc: 41.21 ng/ml



#37 AR-1262-2

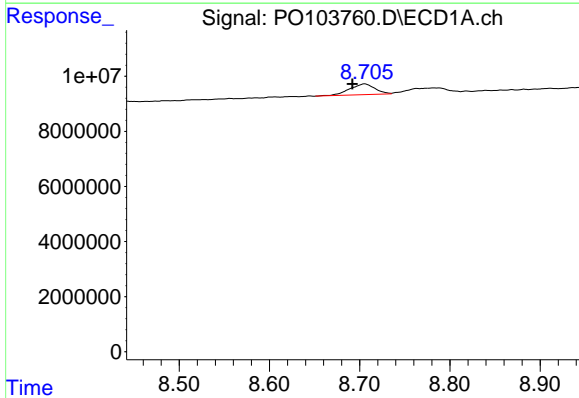
R.T.: 8.379 min
 Delta R.T.: 0.002 min
 Response: 12620347
 Conc: 19.44 ng/ml

Instrument :
 ECD_O
 ClientSampleId :



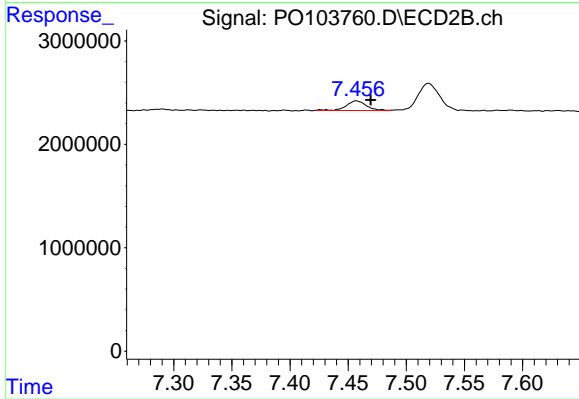
#37 AR-1262-2

R.T.: 6.936 min
 Delta R.T.: -0.011 min
 Response: 2185353
 Conc: 18.54 ng/ml



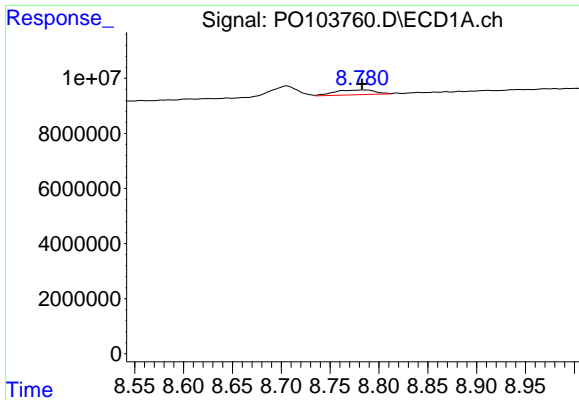
#38 AR-1262-3

R.T.: 8.706 min
 Delta R.T.: 0.013 min
 Response: 7657524
 Conc: 17.86 ng/ml



#38 AR-1262-3

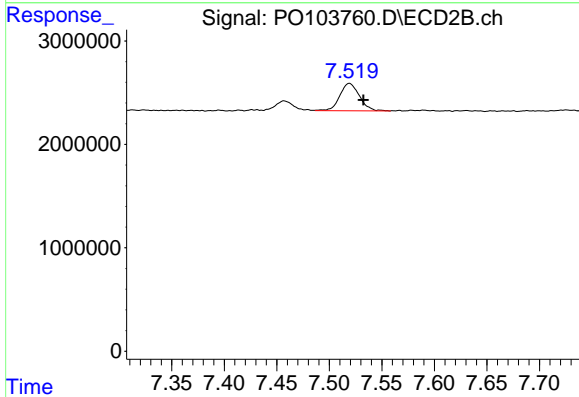
R.T.: 7.457 min
 Delta R.T.: -0.012 min
 Response: 1147867
 Conc: 12.70 ng/ml



#39 AR-1262-4

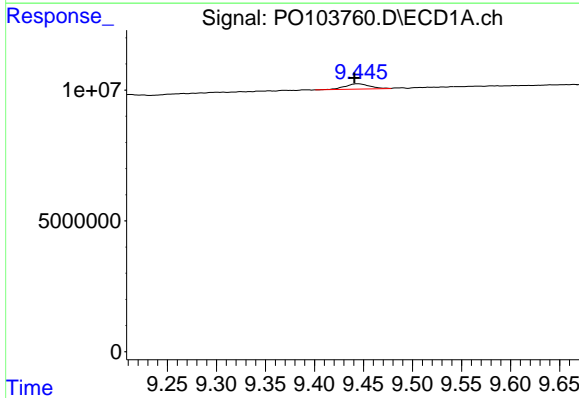
R.T.: 8.788 min
 Delta R.T.: 0.005 min
 Response: 5068003
 Conc: 15.08 ng/ml

Instrument :
 ECD_O
 ClientSampleId :



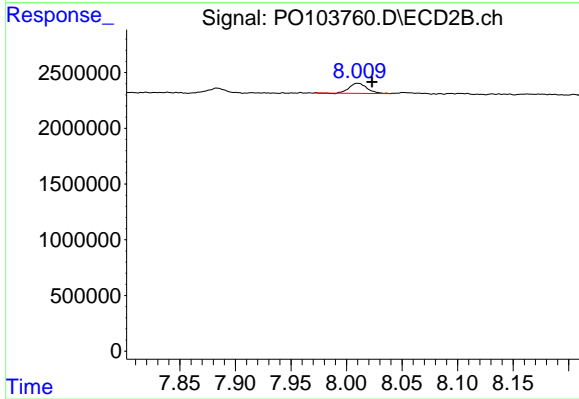
#39 AR-1262-4

R.T.: 7.519 min
 Delta R.T.: -0.013 min
 Response: 3464199
 Conc: 20.74 ng/ml



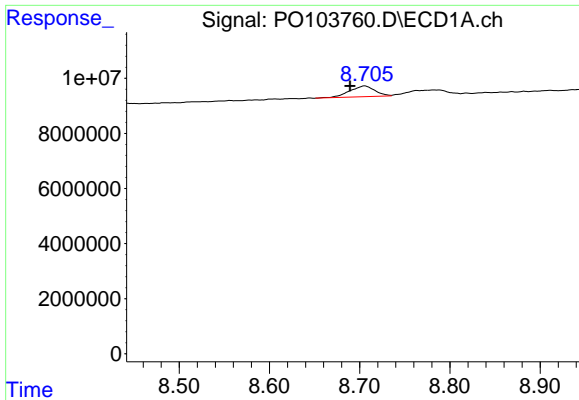
#40 AR-1262-5

R.T.: 9.445 min
 Delta R.T.: 0.004 min
 Response: 3655064
 Conc: 15.41 ng/ml



#40 AR-1262-5

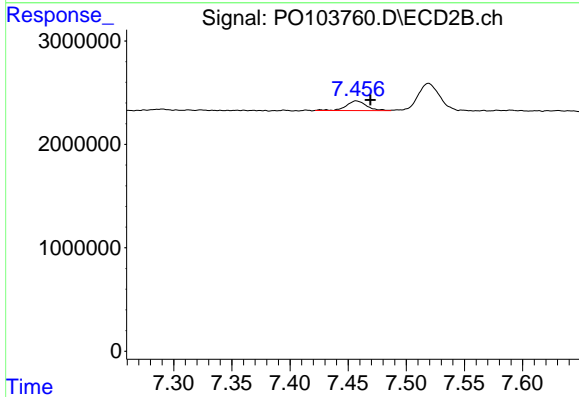
R.T.: 8.010 min
 Delta R.T.: -0.013 min
 Response: 994337
 Conc: 13.78 ng/ml



#41 AR-1268-1

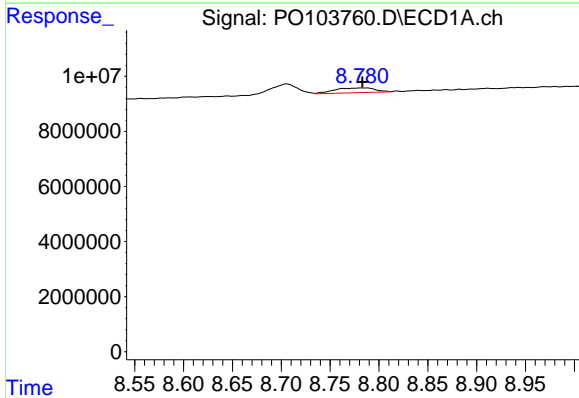
R.T.: 8.706 min
 Delta R.T.: 0.016 min
 Response: 7657524
 Conc: 9.85 ng/ml

Instrument :
 ECD_O
 ClientSampleId :



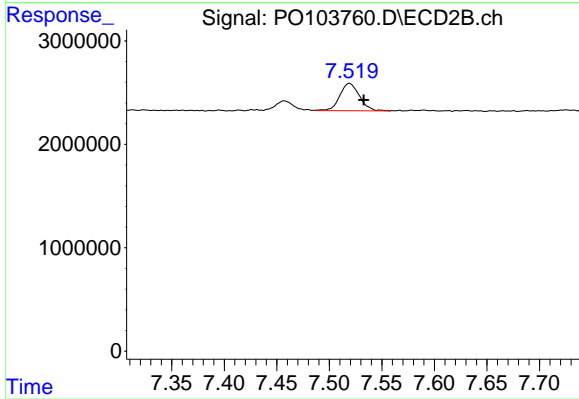
#41 AR-1268-1

R.T.: 7.457 min
 Delta R.T.: -0.012 min
 Response: 1147867
 Conc: 4.46 ng/ml



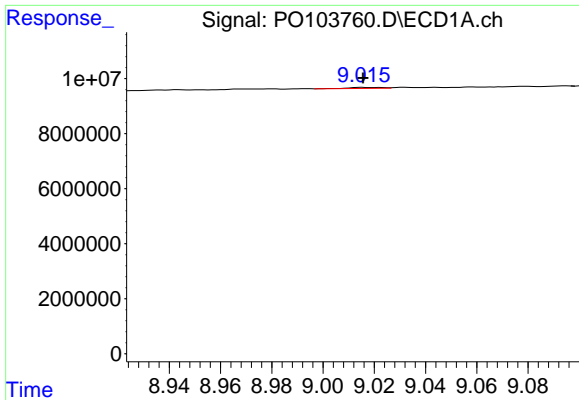
#42 AR-1268-2

R.T.: 8.788 min
 Delta R.T.: 0.005 min
 Response: 5068003
 Conc: 7.09 ng/ml



#42 AR-1268-2

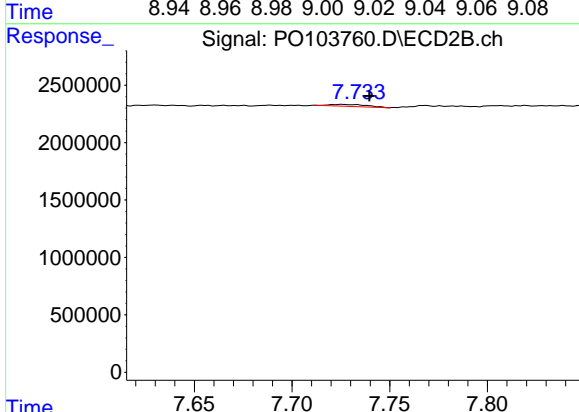
R.T.: 7.519 min
 Delta R.T.: -0.014 min
 Response: 3464199
 Conc: 13.87 ng/ml



#43 AR-1268-3

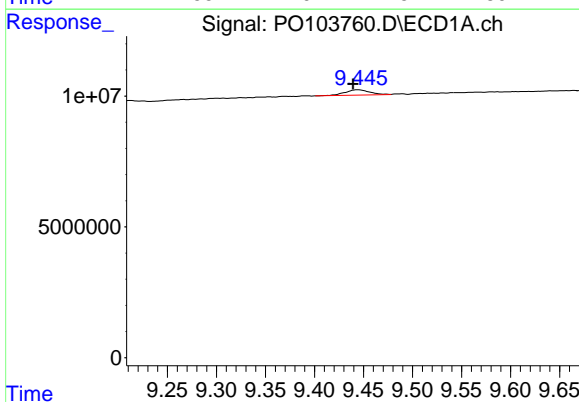
R.T.: 9.016 min
 Delta R.T.: 0.000 min
 Response: 333693
 Conc: 0.53 ng/ml

Instrument :
 ECD_O
 ClientSampleId :



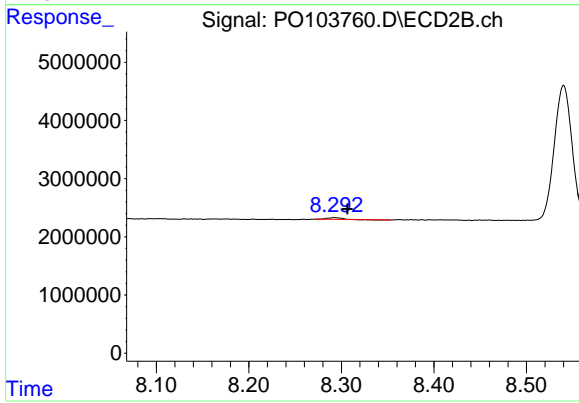
#43 AR-1268-3

R.T.: 7.725 min
 Delta R.T.: -0.014 min
 Response: 222237
 Conc: 1.11 ng/ml



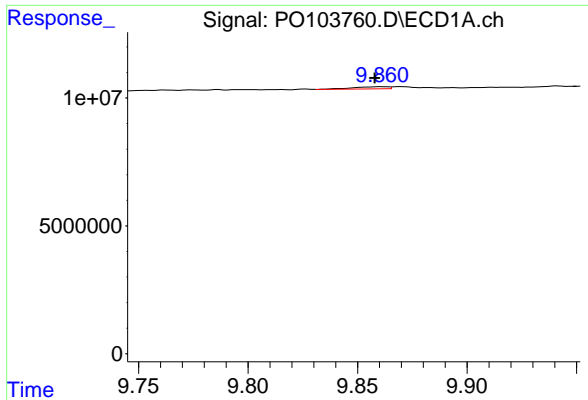
#44 AR-1268-4

R.T.: 9.445 min
 Delta R.T.: 0.005 min
 Response: 3655064
 Conc: 14.42 ng/ml



#44 AR-1268-4

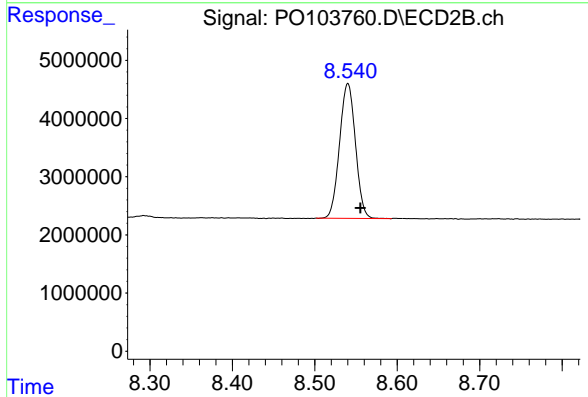
R.T.: 8.292 min
 Delta R.T.: -0.014 min
 Response: 304256
 Conc: 0.56 ng/ml



#45 AR-1268-5

R.T.: 9.861 min
 Delta R.T.: 0.003 min
 Response: 964448
 Conc: 0.50 ng/ml

Instrument :
 ECD_O
 ClientSampleId :



#45 AR-1268-5

R.T.: 8.540 min
 Delta R.T.: -0.015 min
 Response: 31083168
 Conc: 133.55 ng/ml