

Data Path : Z:\pestpcbsrv\HPCHEM1\ECD\_0\Data\P0051424\  
 Data File : P0103780.D  
 Signal(s) : Signal #1: ECD1A.ch Signal #2: ECD2B.ch  
 Acq On : 15 May 2024 04:18  
 Operator : YP/AJ  
 Sample : I.BLK  
 Misc :  
 ALS Vial : 2 Sample Multiplier: 1

Instrument :  
 ECD\_0  
 ClientSampleId :

Integration File signal 1: autoint1.e  
 Integration File signal 2: autoint2.e  
 Quant Time: May 15 05:40:58 2024  
 Quant Method : Z:\pestpcbsrv\HPCHEM1\ECD\_0\methods\P0050624.M  
 Quant Title : GC EXTRACTABLES  
 QLast Update : Tue May 07 04:55:35 2024  
 Response via : Initial Calibration  
 Integrator: ChemStation

Volume Inj. : 2 µl  
 Signal #1 Phase : ZB-MR1 Signal #2 Phase: ZB-MR2  
 Signal #1 Info : 30Mx0.32mmx 0.50µ Signal #2 Info : 30M x 0.32mm x 0.25µm

Compound	RT#1	RT#2	Resp#1	Resp#2	ng/ml	ng/ml
-----						
System Monitoring Compounds						
1) SA Tetrachlo...	4.450	3.584	151.5E6	51119498	19.691	20.292
2) SA Decachlor...	10.206	8.541	110.9E6	28323332	23.397	21.772
Target Compounds						
3) L1 AR-1016-1	5.612	4.675	582051	741146	2.394	9.445 #
4) L1 AR-1016-2	5.645	4.675	869236	741146	2.510	6.188 #
5) L1 AR-1016-3	5.688	4.857	2685364	552686	12.951	8.270 #
6) L1 AR-1016-4	5.805	4.910	389445	986839	2.284	21.475 #
7) L1 AR-1016-5	6.098	5.110	685378	1560252	4.327	24.989 #
8) L2 AR-1221-1	4.670	3.799	342188	46427	3.855	1.508 #
9) L2 AR-1221-2	4.756	3.881	3376893	910901	50.168	37.451 #
10) L2 AR-1221-3	4.809	3.982	996359	17481	4.960	0.244 #
11) L3 AR-1232-1	4.809	3.982	996359	17481	6.000	0.294 #
12) L3 AR-1232-2	5.348	4.675	126609	741146	1.483	12.930 #
13) L3 AR-1232-3	5.645	4.857	869236	552686	5.305	17.849 #
14) L3 AR-1232-4	5.805	4.936	389445	716025	4.937	27.877 #
15) L3 AR-1232-5	5.885	5.110	956703	1560252	16.921	56.144 #
16) L4 AR-1242-1	5.612	4.675	582051	741146	2.844	11.211 #
17) L4 AR-1242-2	5.645	4.675	869236	741146	2.984	7.446 #
18) L4 AR-1242-3	5.688	4.857	2685364	552686	15.492	10.098 #
19) L4 AR-1242-4	5.805	4.936	389445	716025	2.711	14.414 #
20) L4 AR-1242-5	6.546	5.482	928717	4034000	6.486	65.987 #
21) L5 AR-1248-1	5.612	4.675	582051	741146	3.793	14.688 #
22) L5 AR-1248-2	5.885	4.910	956703	986839	4.651	14.980 #
23) L5 AR-1248-3	6.098	4.936	685378	716025	3.043	9.891 #
24) L5 AR-1248-4	6.504	5.110	996401	1560252	3.872	18.461 #
25) L5 AR-1248-5	6.546	5.514	928717	2074839	3.812	23.629 #
26) L6 AR-1254-1	6.474	5.482	4579614	4034000	18.597	33.097 #
27) L6 AR-1254-2	6.688	5.616	707372	1872942	1.954	17.736 #
28) L6 AR-1254-3	7.056	6.008	3525786	887412	9.685	5.163 #
29) L6 AR-1254-4	7.349	6.233	440559	270293	1.554	2.623 #
30) L6 AR-1254-5	7.760	6.660	12604	77293	0.047	0.560 #
31) L7 AR-1260-1	7.224	6.145	902169	417393	3.450	3.950
32) L7 AR-1260-2	7.474	6.348	232670	53952	0.715	0.431 #
33) L7 AR-1260-3	7.838	6.474	189924	167002	0.766	1.414 #
34) L7 AR-1260-4	8.064	6.955	236546	68978	0.971	0.773
35) L7 AR-1260-5	8.393	7.195	222138	100719	0.409	0.486
36) L8 AR-1262-1	7.749	6.638	244827	141172	1.063	1.841 #
37) L8 AR-1262-2	8.393	6.955	222138	68978	0.342	0.585 #
38) L8 AR-1262-3	8.678	7.477	-20350	103623	N.D.	1.147 #
39) L8 AR-1262-4	8.794	7.521	343203	162558	1.021	0.973
40) L8 AR-1262-5	9.437	8.025	38368	50242	0.162	0.696 #
41) L9 AR-1268-1	8.678	7.477	-20350	103623	N.D.	0.403 #

Data Path : Z:\pestpcbsrv\HPCHEM1\ECD\_0\Data\P0051424\  
 Data File : P0103780.D  
 Signal(s) : Signal #1: ECD1A.ch Signal #2: ECD2B.ch  
 Acq On : 15 May 2024 04:18  
 Operator : YP/AJ  
 Sample : I.BLK  
 Misc :  
 ALS Vial : 2 Sample Multiplier: 1

Instrument :  
 ECD\_0  
 ClientSampleId :

Integration File signal 1: autoint1.e  
 Integration File signal 2: autoint2.e  
 Quant Time: May 15 05:40:58 2024  
 Quant Method : Z:\pestpcbsrv\HPCHEM1\ECD\_0\methods\P0050624.M  
 Quant Title : GC EXTRACTABLES  
 QLast Update : Tue May 07 04:55:35 2024  
 Response via : Initial Calibration  
 Integrator: ChemStation

Volume Inj. : 2 µl  
 Signal #1 Phase : ZB-MR1 Signal #2 Phase: ZB-MR2  
 Signal #1 Info : 30Mx0.32mmx 0.50µ Signal #2 Info : 30M x 0.32mm x 0.25µm

	Compound	RT#1	RT#2	Resp#1	Resp#2	ng/ml	ng/ml
42)	L9 AR-1268-2	8.794	7.521	343203	162558	0.480	0.651 #
43)	L9 AR-1268-3	9.032	7.729	323884	177485	0.514	0.883 #
44)	L9 AR-1268-4	9.437	8.300	38368	99961	0.151	0.184
45)	L9 AR-1268-5	9.865	8.541	801581	28323332	0.414	121.693 #

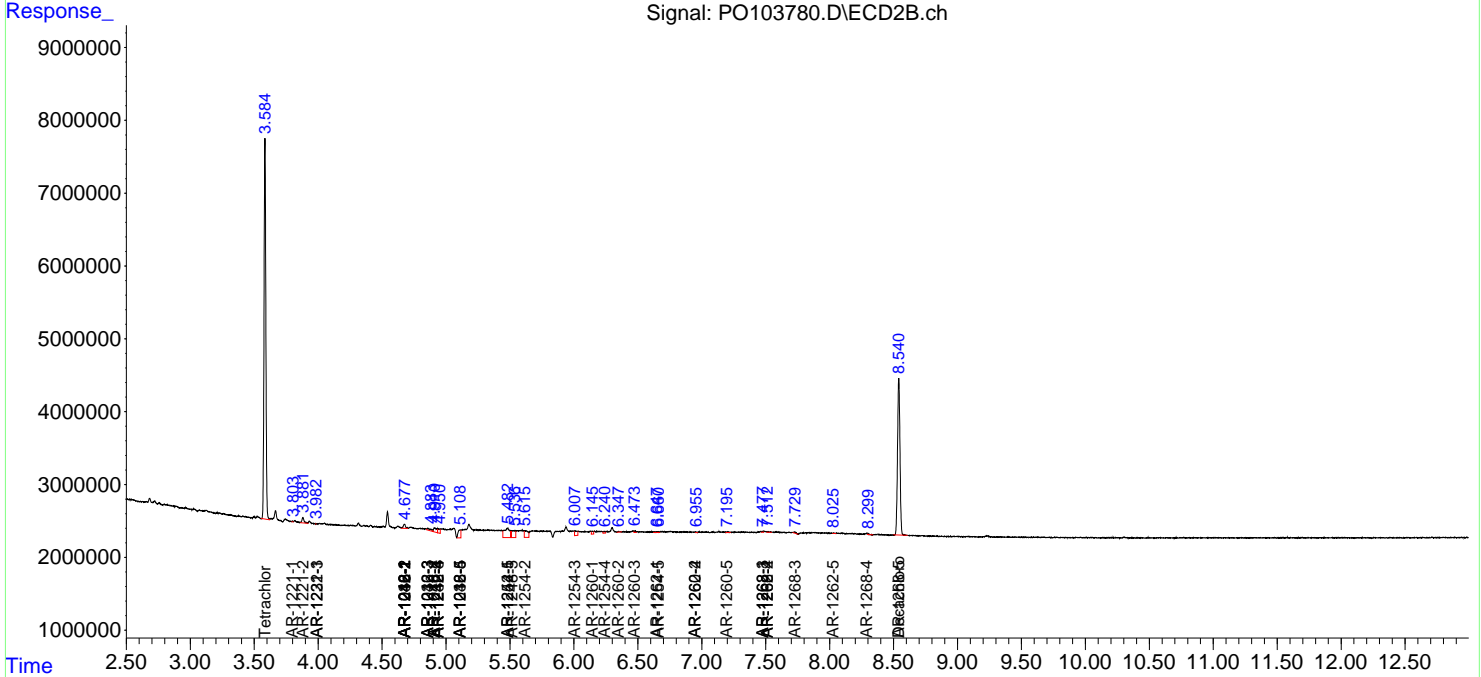
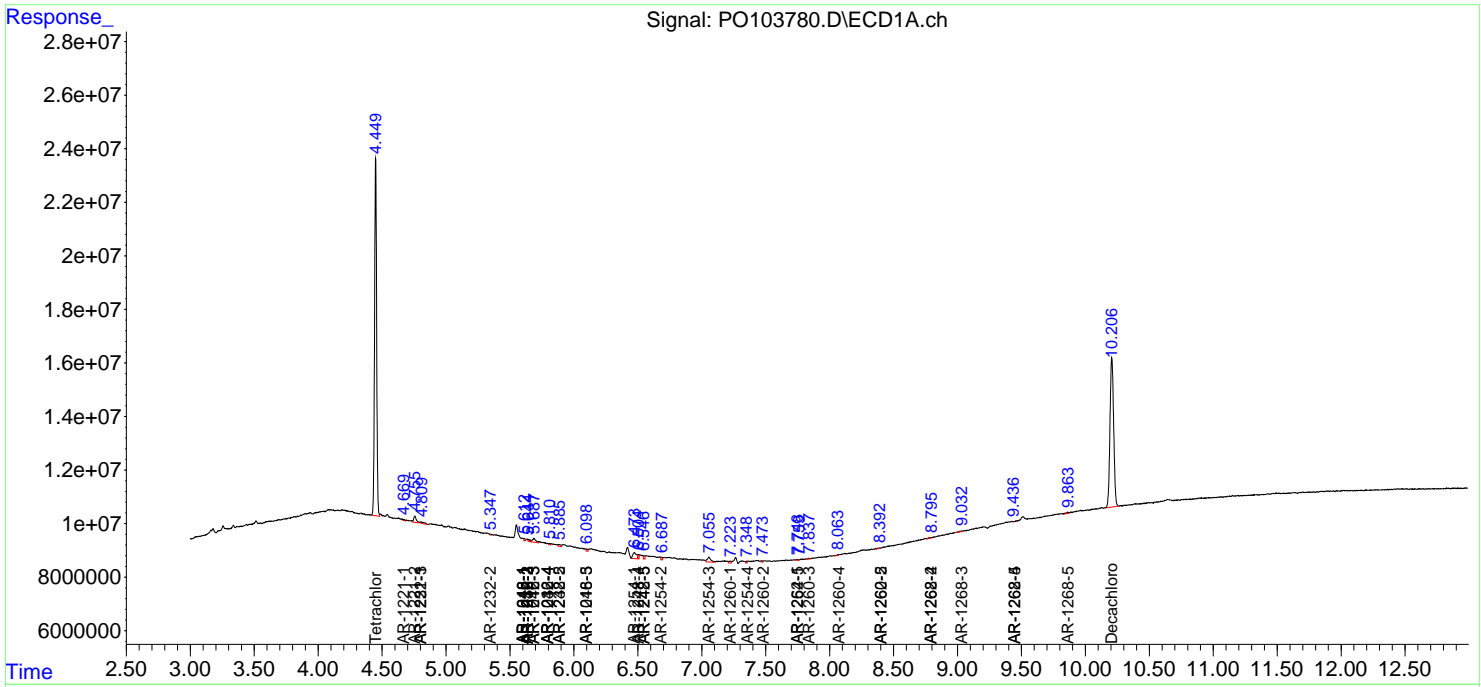
(f)=RT Delta > 1/2 Window (#)=Amounts differ by > 25% (m)=manual int.

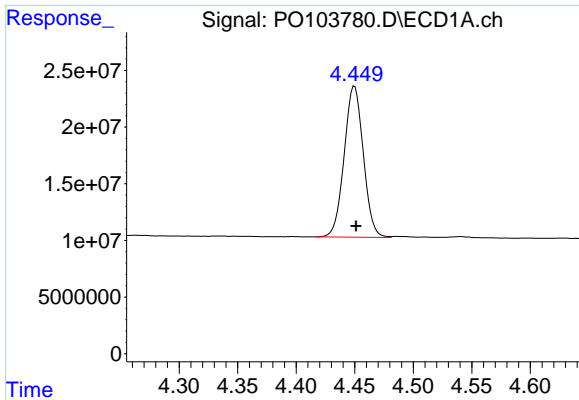
Data Path : Z:\pestpcbsrv\HPCHEM1\ECD\_O\Data\P0051424\  
 Data File : P0103780.D  
 Signal(s) : Signal #1: ECD1A.ch Signal #2: ECD2B.ch  
 Acq On : 15 May 2024 04:18  
 Operator : YP/AJ  
 Sample : I.BLK  
 Misc :  
 ALS Vial : 2 Sample Multiplier: 1

Instrument :  
 ECD\_O  
 ClientSampleId :

Integration File signal 1: autoint1.e  
 Integration File signal 2: autoint2.e  
 Quant Time: May 15 05:40:58 2024  
 Quant Method : Z:\pestpcbsrv\HPCHEM1\ECD\_O\methods\P0050624.M  
 Quant Title : GC EXTRACTABLES  
 QLast Update : Tue May 07 04:55:35 2024  
 Response via : Initial Calibration  
 Integrator: ChemStation

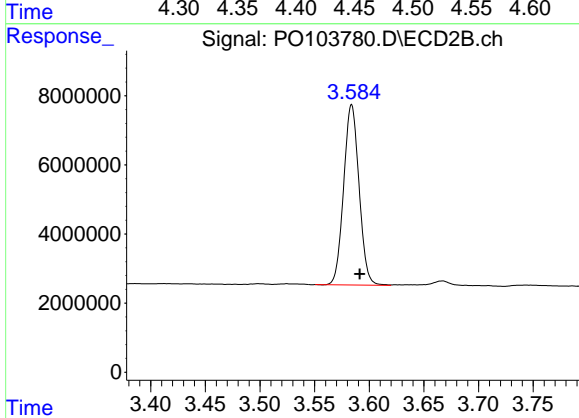
Volume Inj. : 2 µl  
 Signal #1 Phase : ZB-MR1 Signal #2 Phase: ZB-MR2  
 Signal #1 Info : 30Mx0.32mmx 0.50µ Signal #2 Info : 30M x 0.32mm x 0.25µm



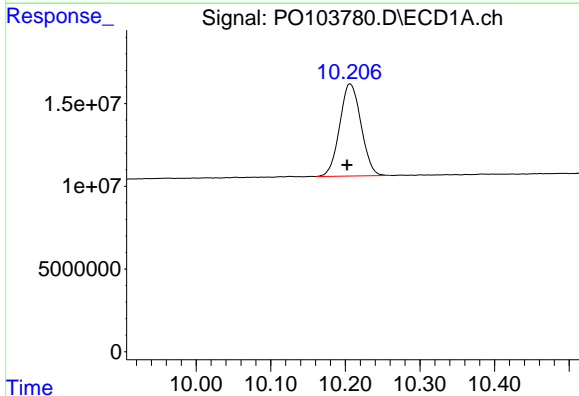


#1 Tetrachloro-m-xylene  
 R.T.: 4.450 min  
 Delta R.T.: -0.001 min  
 Response: 151534843  
 Conc: 19.69 ng/ml

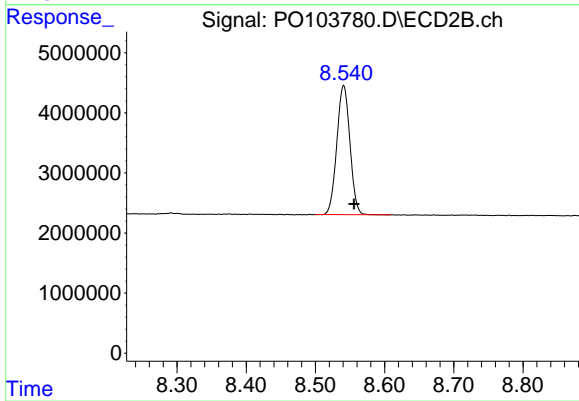
Instrument :  
 ECD\_O  
 ClientSampleId :



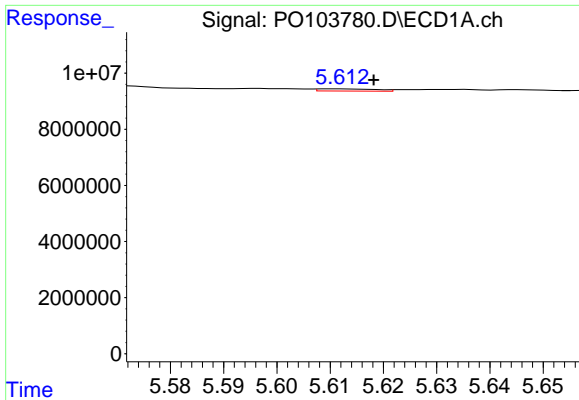
#1 Tetrachloro-m-xylene  
 R.T.: 3.584 min  
 Delta R.T.: -0.007 min  
 Response: 51119498  
 Conc: 20.29 ng/ml



#2 Decachlorobiphenyl  
 R.T.: 10.206 min  
 Delta R.T.: 0.004 min  
 Response: 110905898  
 Conc: 23.40 ng/ml



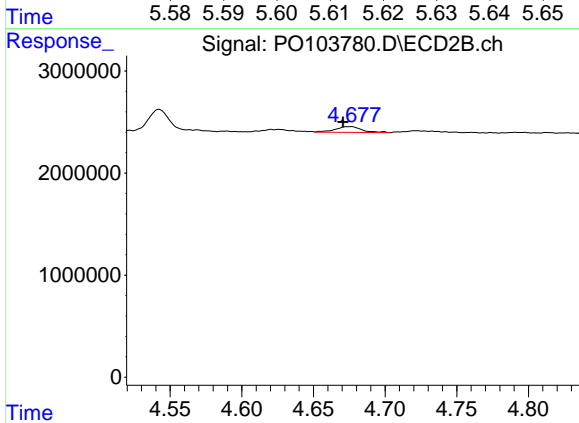
#2 Decachlorobiphenyl  
 R.T.: 8.541 min  
 Delta R.T.: -0.015 min  
 Response: 28323332  
 Conc: 21.77 ng/ml



#3 AR-1016-1

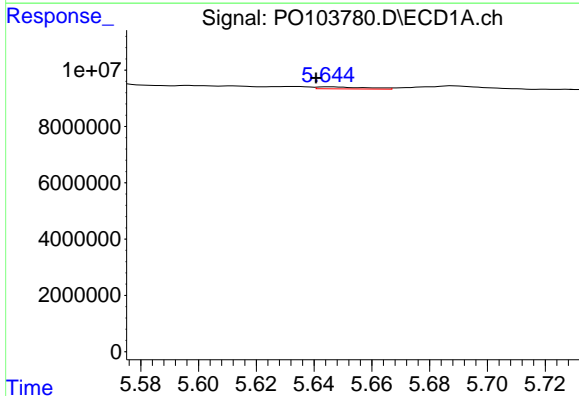
R.T.: 5.612 min  
 Delta R.T.: -0.007 min  
 Response: 582051  
 Conc: 2.39 ng/ml

Instrument :  
 ECD\_O  
 ClientSampleId :



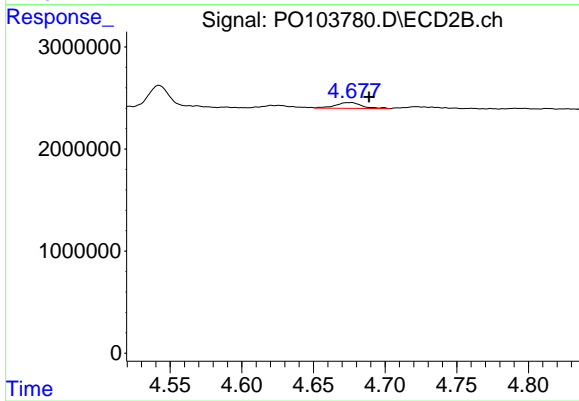
#3 AR-1016-1

R.T.: 4.675 min  
 Delta R.T.: 0.005 min  
 Response: 741146  
 Conc: 9.45 ng/ml



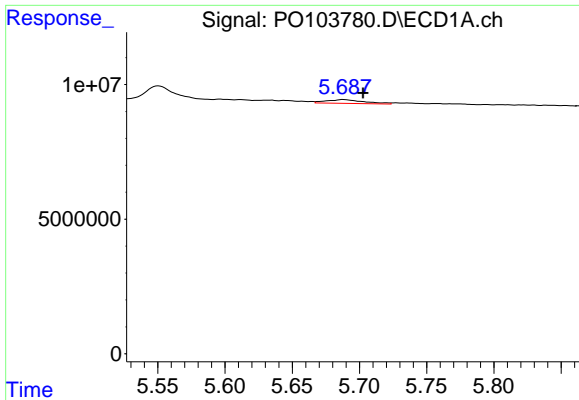
#4 AR-1016-2

R.T.: 5.645 min  
 Delta R.T.: 0.004 min  
 Response: 869236  
 Conc: 2.51 ng/ml



#4 AR-1016-2

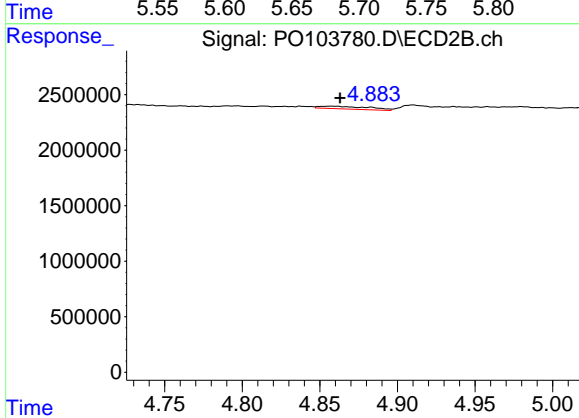
R.T.: 4.675 min  
 Delta R.T.: -0.014 min  
 Response: 741146  
 Conc: 6.19 ng/ml



#5 AR-1016-3

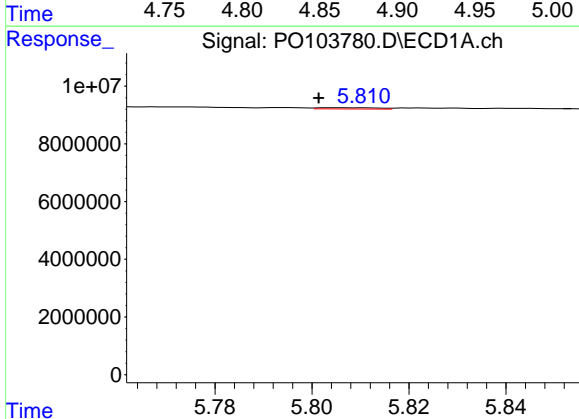
R.T.: 5.688 min  
 Delta R.T.: -0.014 min  
 Response: 2685364  
 Conc: 12.95 ng/ml

Instrument :  
 ECD\_O  
 ClientSampleId :



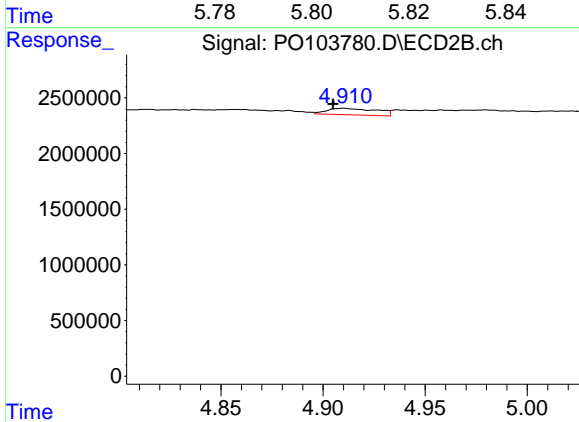
#5 AR-1016-3

R.T.: 4.857 min  
 Delta R.T.: -0.005 min  
 Response: 552686  
 Conc: 8.27 ng/ml



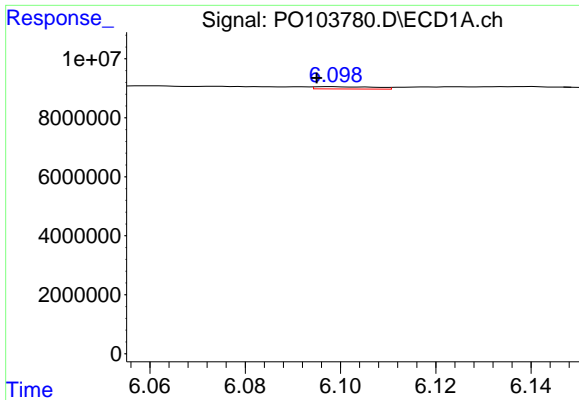
#6 AR-1016-4

R.T.: 5.805 min  
 Delta R.T.: 0.004 min  
 Response: 389445  
 Conc: 2.28 ng/ml



#6 AR-1016-4

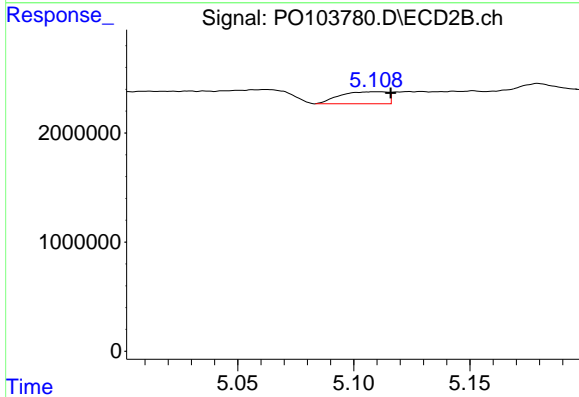
R.T.: 4.910 min  
 Delta R.T.: 0.005 min  
 Response: 986839  
 Conc: 21.47 ng/ml



#7 AR-1016-5

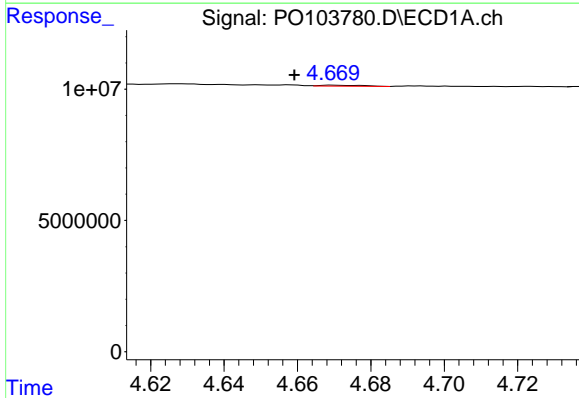
R.T.: 6.098 min  
 Delta R.T.: 0.003 min  
 Response: 685378  
 Conc: 4.33 ng/ml

Instrument :  
 ECD\_O  
 ClientSampleId :



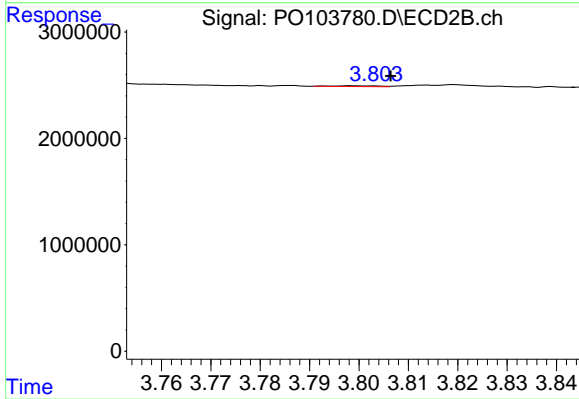
#7 AR-1016-5

R.T.: 5.110 min  
 Delta R.T.: -0.006 min  
 Response: 1560252  
 Conc: 24.99 ng/ml



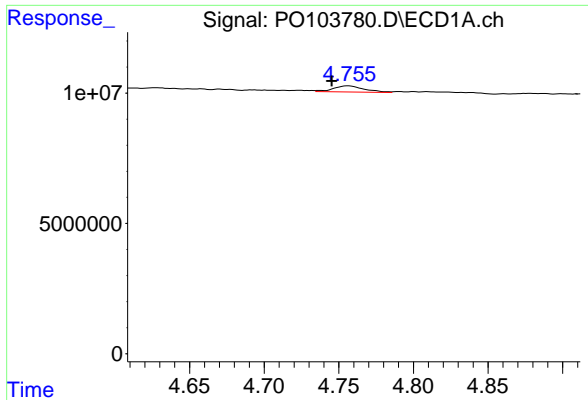
#8 AR-1221-1

R.T.: 4.670 min  
 Delta R.T.: 0.011 min  
 Response: 342188  
 Conc: 3.86 ng/ml



#8 AR-1221-1

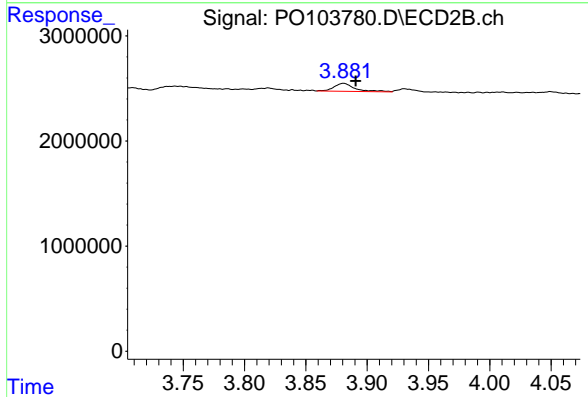
R.T.: 3.799 min  
 Delta R.T.: -0.007 min  
 Response: 46427  
 Conc: 1.51 ng/ml



#9 AR-1221-2

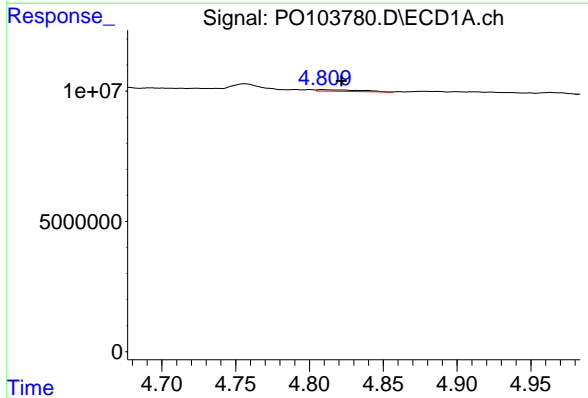
R.T.: 4.756 min  
 Delta R.T.: 0.011 min  
 Response: 3376893  
 Conc: 50.17 ng/ml

Instrument :  
 ECD\_O  
 ClientSampleId :



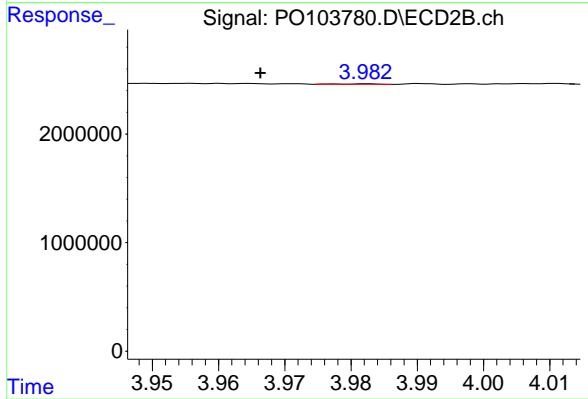
#9 AR-1221-2

R.T.: 3.881 min  
 Delta R.T.: -0.010 min  
 Response: 910901  
 Conc: 37.45 ng/ml



#10 AR-1221-3

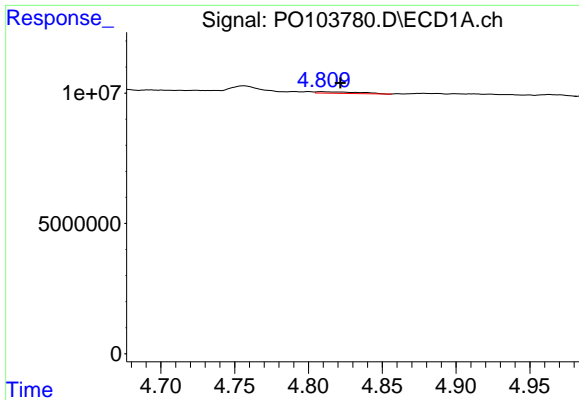
R.T.: 4.809 min  
 Delta R.T.: -0.012 min  
 Response: 996359  
 Conc: 4.96 ng/ml



#10 AR-1221-3

R.T.: 3.982 min  
 Delta R.T.: 0.016 min  
 Response: 17481  
 Conc: 0.24 ng/ml

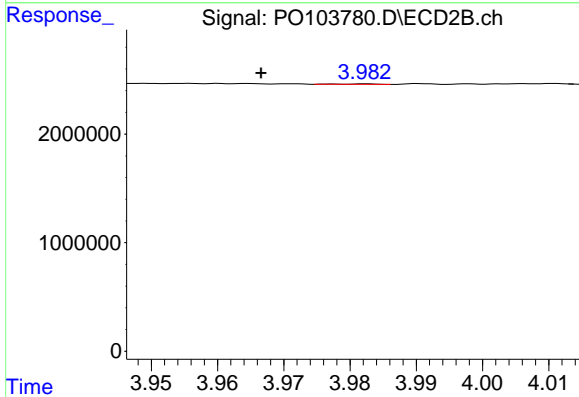




#11 AR-1232-1

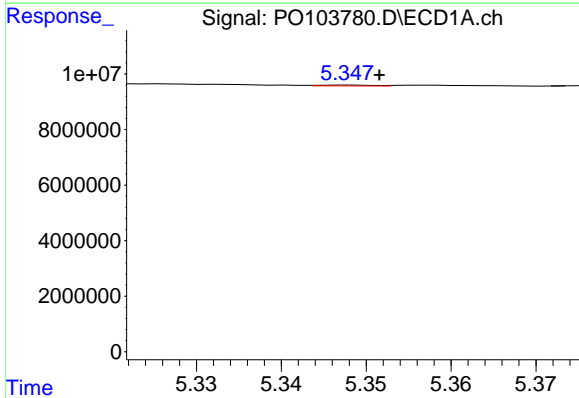
R.T.: 4.809 min  
 Delta R.T.: -0.012 min  
 Response: 996359  
 Conc: 6.00 ng/ml

Instrument :  
 ECD\_O  
 ClientSampleId :



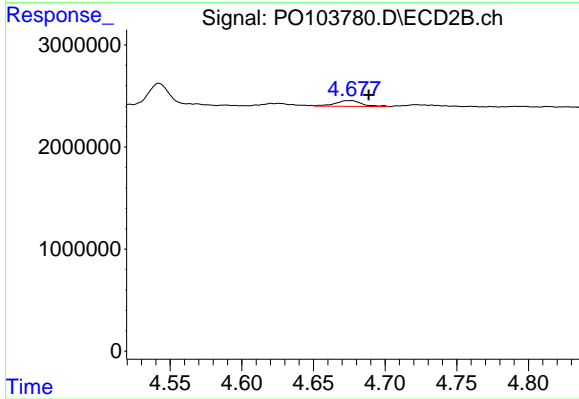
#11 AR-1232-1

R.T.: 3.982 min  
 Delta R.T.: 0.016 min  
 Response: 17481  
 Conc: 0.29 ng/ml



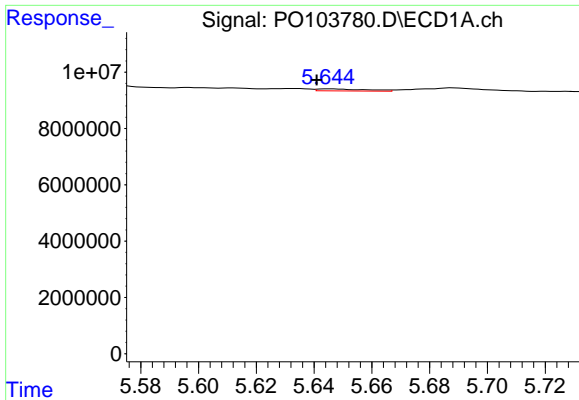
#12 AR-1232-2

R.T.: 5.348 min  
 Delta R.T.: -0.004 min  
 Response: 126609  
 Conc: 1.48 ng/ml



#12 AR-1232-2

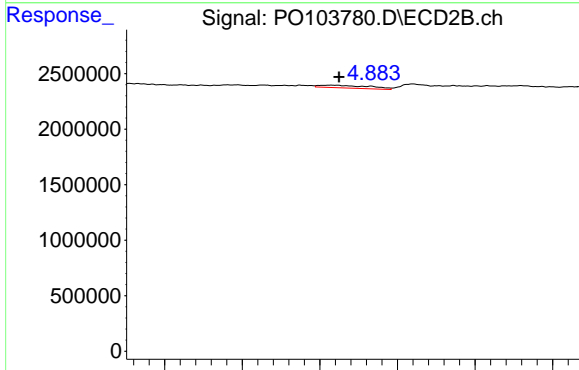
R.T.: 4.675 min  
 Delta R.T.: -0.013 min  
 Response: 741146  
 Conc: 12.93 ng/ml



#13 AR-1232-3

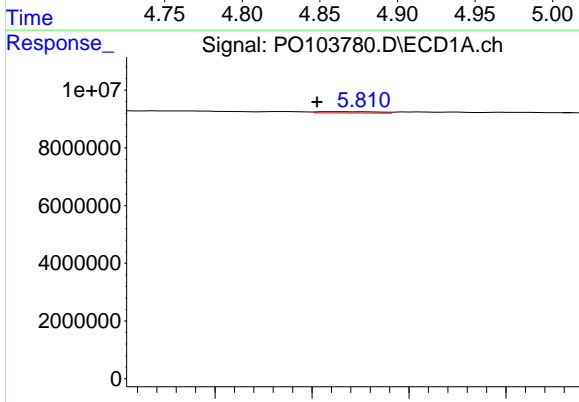
R.T.: 5.645 min  
 Delta R.T.: 0.004 min  
 Response: 869236  
 Conc: 5.31 ng/ml

Instrument :  
 ECD\_O  
 ClientSampleId :



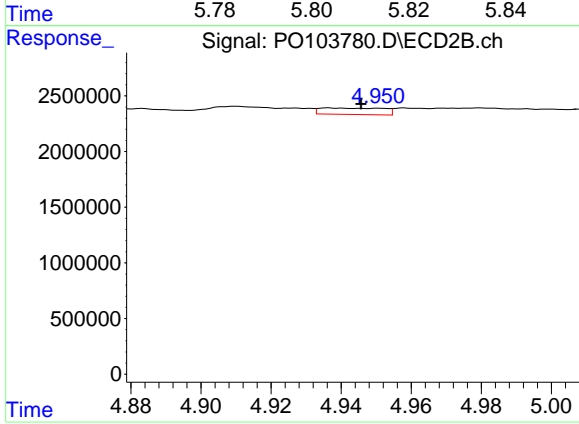
#13 AR-1232-3

R.T.: 4.857 min  
 Delta R.T.: -0.005 min  
 Response: 552686  
 Conc: 17.85 ng/ml



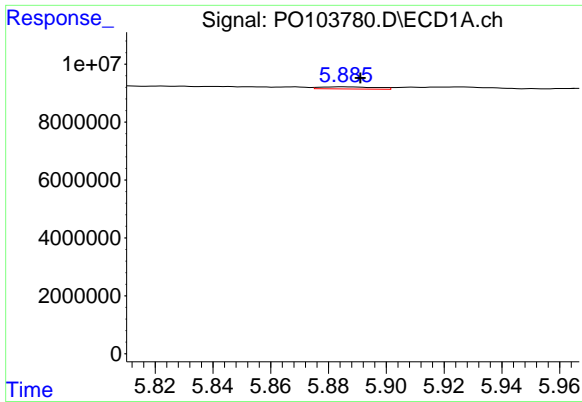
#14 AR-1232-4

R.T.: 5.805 min  
 Delta R.T.: 0.004 min  
 Response: 389445  
 Conc: 4.94 ng/ml



#14 AR-1232-4

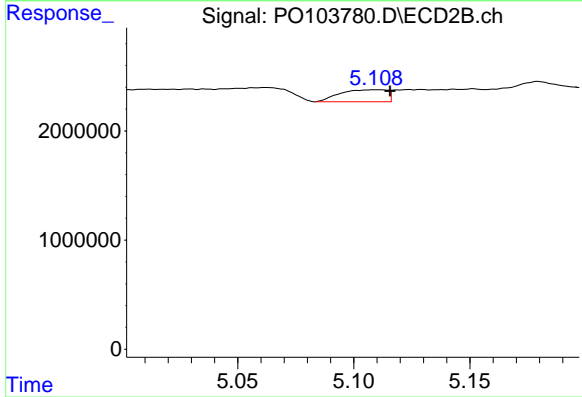
R.T.: 4.936 min  
 Delta R.T.: -0.009 min  
 Response: 716025  
 Conc: 27.88 ng/ml



#15 AR-1232-5

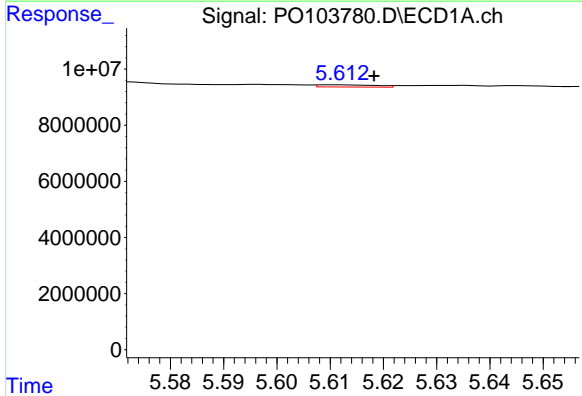
R.T.: 5.885 min  
 Delta R.T.: -0.006 min  
 Response: 956703  
 Conc: 16.92 ng/ml

Instrument :  
 ECD\_O  
 ClientSampleId :



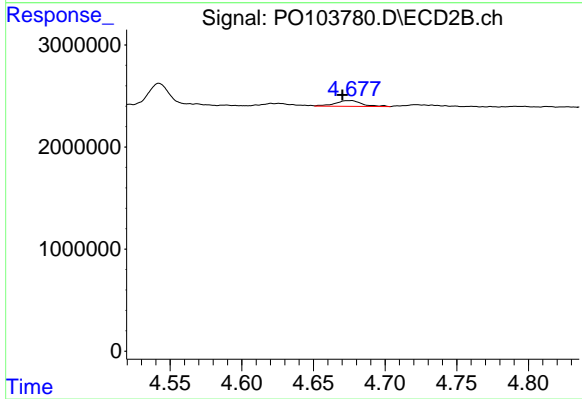
#15 AR-1232-5

R.T.: 5.110 min  
 Delta R.T.: -0.006 min  
 Response: 1560252  
 Conc: 56.14 ng/ml



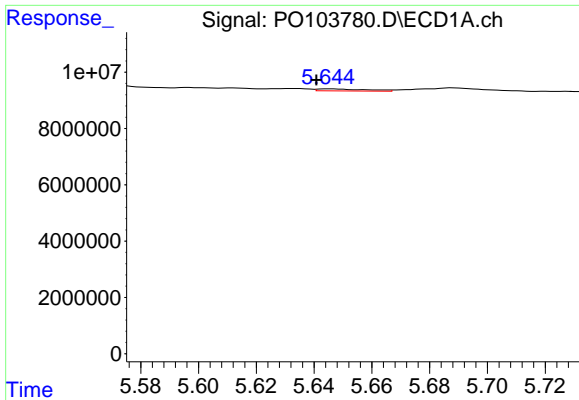
#16 AR-1242-1

R.T.: 5.612 min  
 Delta R.T.: -0.007 min  
 Response: 582051  
 Conc: 2.84 ng/ml



#16 AR-1242-1

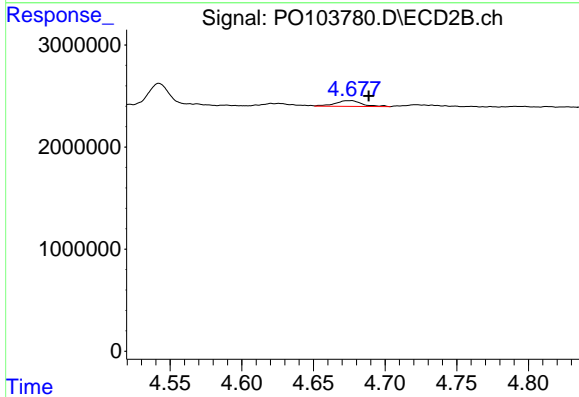
R.T.: 4.675 min  
 Delta R.T.: 0.005 min  
 Response: 741146  
 Conc: 11.21 ng/ml



#17 AR-1242-2

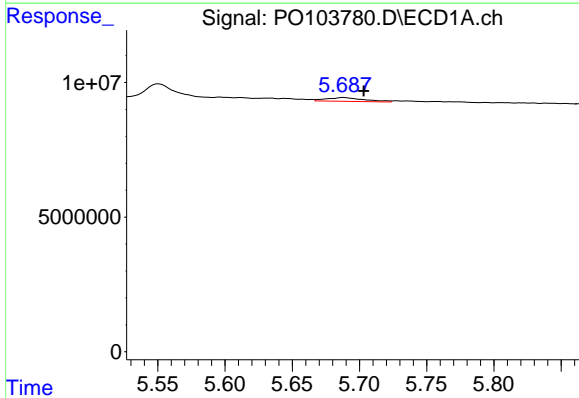
R.T.: 5.645 min  
 Delta R.T.: 0.004 min  
 Response: 869236  
 Conc: 2.98 ng/ml

Instrument :  
 ECD\_O  
 ClientSampleId :



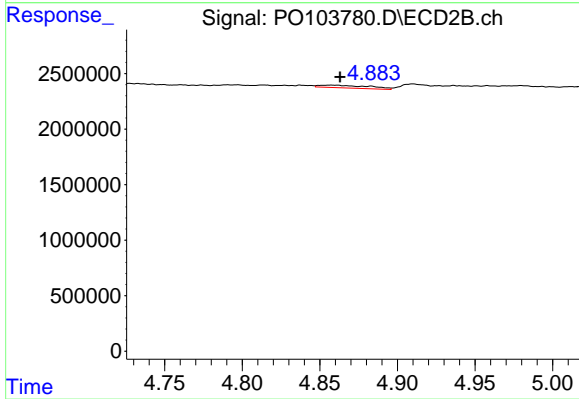
#17 AR-1242-2

R.T.: 4.675 min  
 Delta R.T.: -0.013 min  
 Response: 741146  
 Conc: 7.45 ng/ml



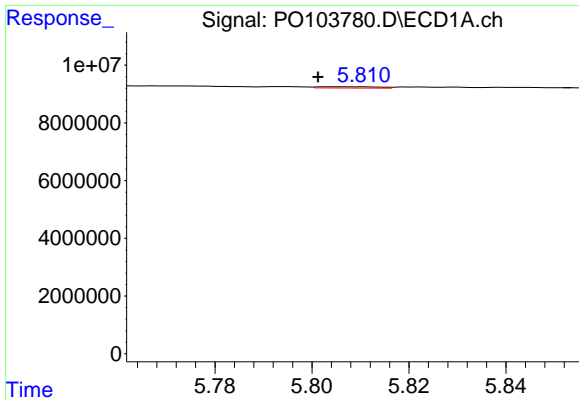
#18 AR-1242-3

R.T.: 5.688 min  
 Delta R.T.: -0.015 min  
 Response: 2685364  
 Conc: 15.49 ng/ml



#18 AR-1242-3

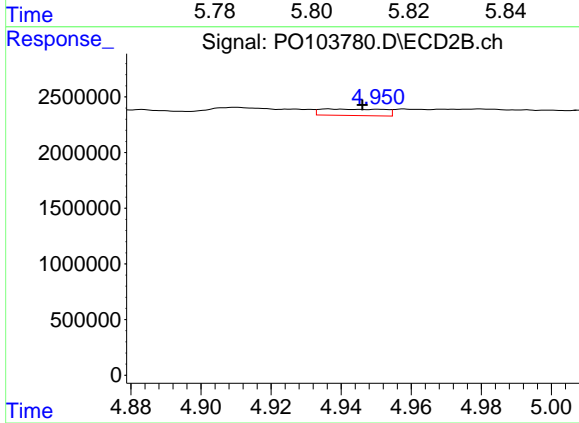
R.T.: 4.857 min  
 Delta R.T.: -0.006 min  
 Response: 552686  
 Conc: 10.10 ng/ml



#19 AR-1242-4

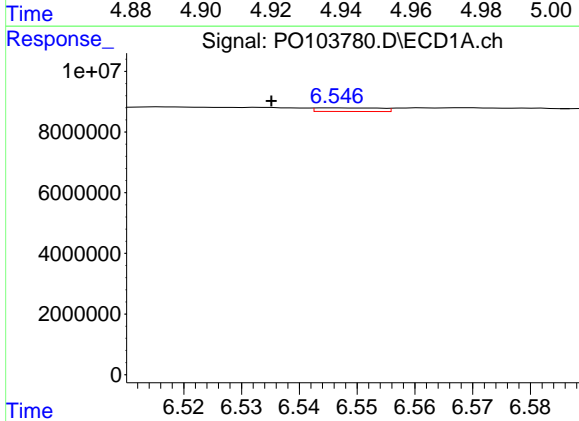
R.T.: 5.805 min  
Delta R.T.: 0.004 min  
Response: 389445  
Conc: 2.71 ng/ml

Instrument :  
ECD\_O  
ClientSampleId :



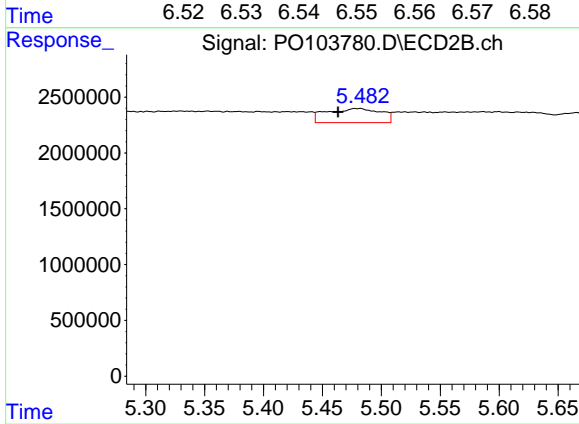
#19 AR-1242-4

R.T.: 4.936 min  
Delta R.T.: -0.010 min  
Response: 716025  
Conc: 14.41 ng/ml



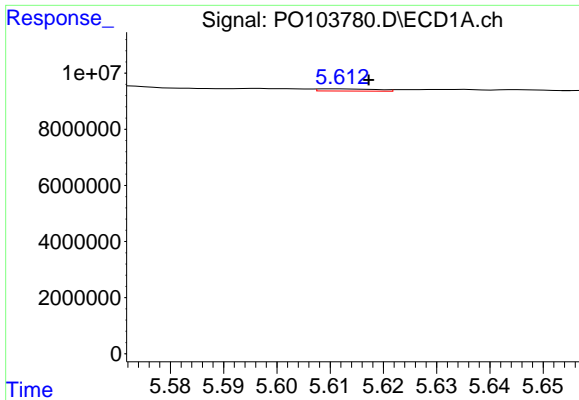
#20 AR-1242-5

R.T.: 6.546 min  
Delta R.T.: 0.011 min  
Response: 928717  
Conc: 6.49 ng/ml



#20 AR-1242-5

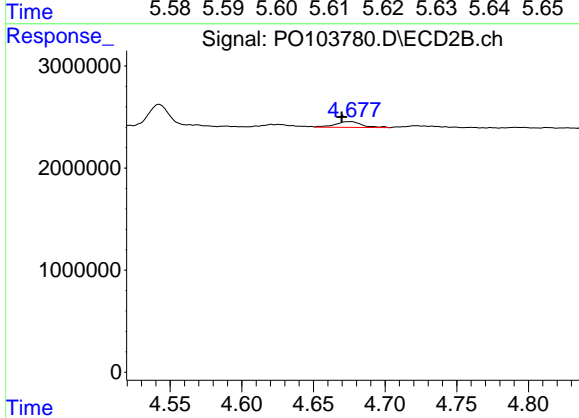
R.T.: 5.482 min  
Delta R.T.: 0.019 min  
Response: 4034000  
Conc: 65.99 ng/ml



#21 AR-1248-1

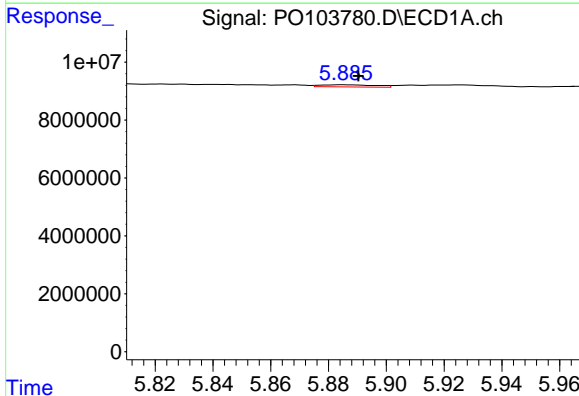
R.T.: 5.612 min  
 Delta R.T.: -0.006 min  
 Response: 582051  
 Conc: 3.79 ng/ml

Instrument :  
 ECD\_O  
 ClientSampleId :



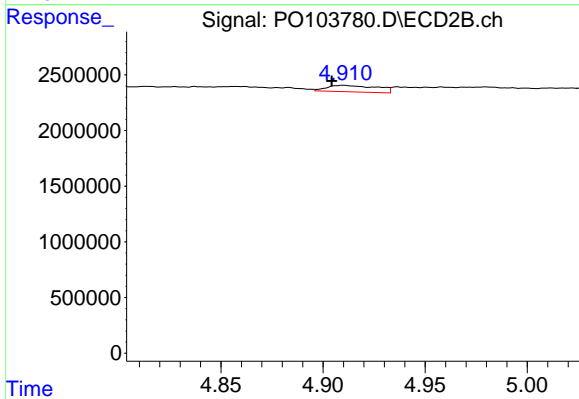
#21 AR-1248-1

R.T.: 4.675 min  
 Delta R.T.: 0.005 min  
 Response: 741146  
 Conc: 14.69 ng/ml



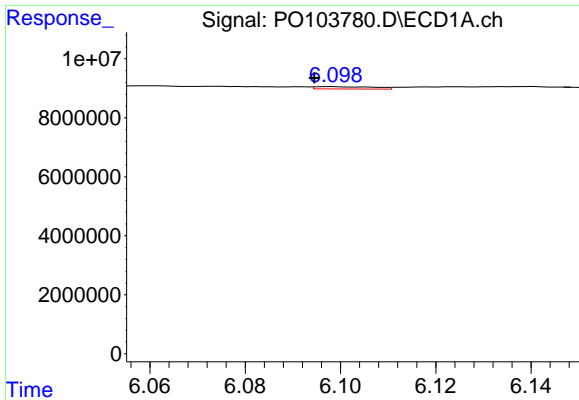
#22 AR-1248-2

R.T.: 5.885 min  
 Delta R.T.: -0.005 min  
 Response: 956703  
 Conc: 4.65 ng/ml



#22 AR-1248-2

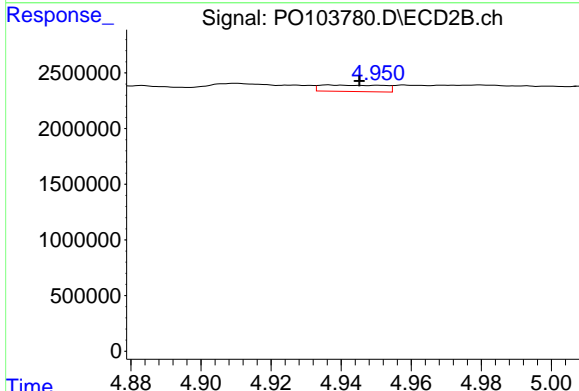
R.T.: 4.910 min  
 Delta R.T.: 0.006 min  
 Response: 986839  
 Conc: 14.98 ng/ml



#23 AR-1248-3

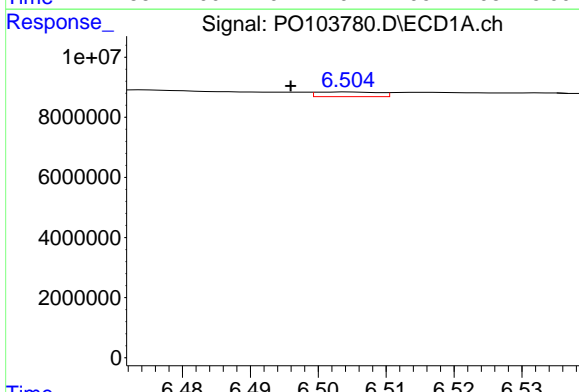
R.T.: 6.098 min  
 Delta R.T.: 0.003 min  
 Response: 685378  
 Conc: 3.04 ng/ml

Instrument :  
 ECD\_O  
 ClientSampleId :



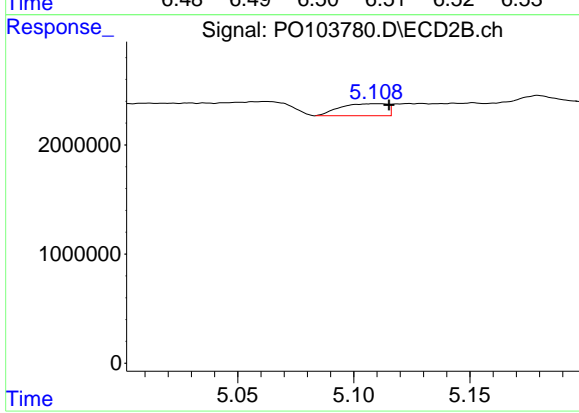
#23 AR-1248-3

R.T.: 4.936 min  
 Delta R.T.: -0.009 min  
 Response: 716025  
 Conc: 9.89 ng/ml



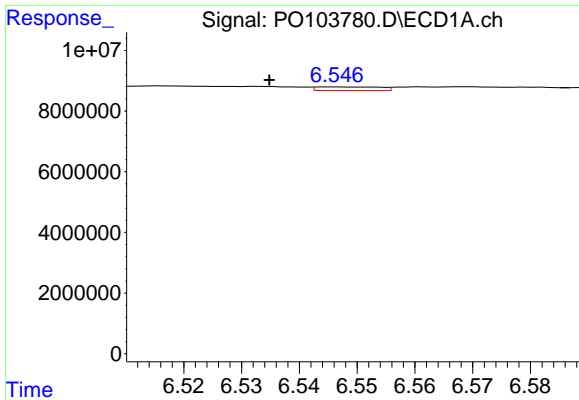
#24 AR-1248-4

R.T.: 6.504 min  
 Delta R.T.: 0.008 min  
 Response: 996401  
 Conc: 3.87 ng/ml



#24 AR-1248-4

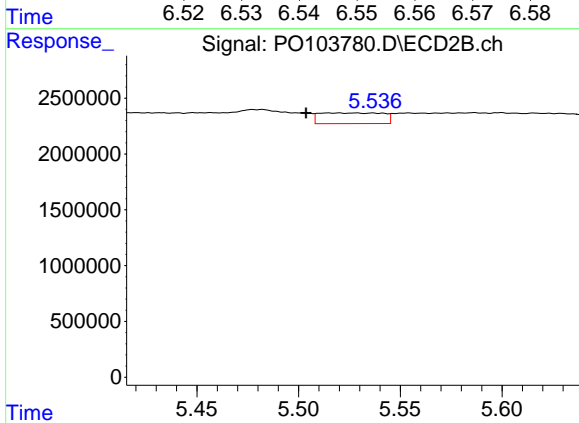
R.T.: 5.110 min  
 Delta R.T.: -0.005 min  
 Response: 1560252  
 Conc: 18.46 ng/ml



#25 AR-1248-5

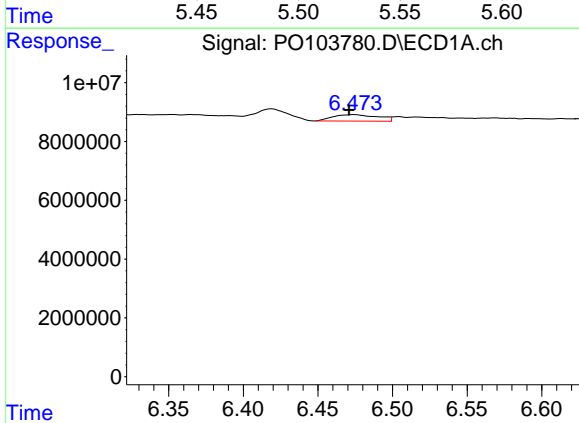
R.T.: 6.546 min  
 Delta R.T.: 0.011 min  
 Response: 928717  
 Conc: 3.81 ng/ml

Instrument :  
 ECD\_O  
 ClientSampleId :



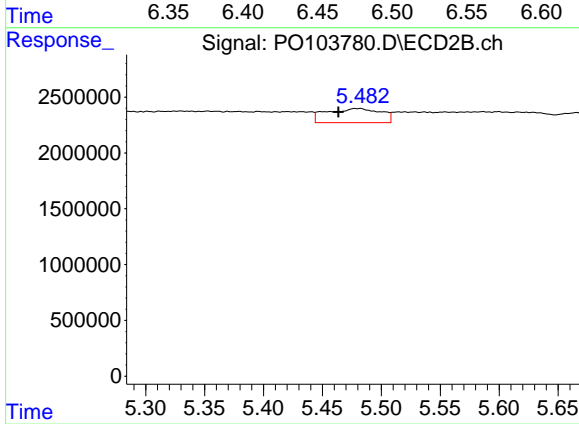
#25 AR-1248-5

R.T.: 5.514 min  
 Delta R.T.: 0.011 min  
 Response: 2074839  
 Conc: 23.63 ng/ml



#26 AR-1254-1

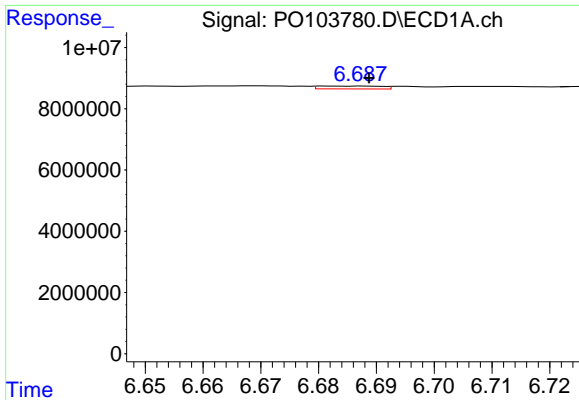
R.T.: 6.474 min  
 Delta R.T.: 0.003 min  
 Response: 4579614  
 Conc: 18.60 ng/ml



#26 AR-1254-1

R.T.: 5.482 min  
 Delta R.T.: 0.018 min  
 Response: 4034000  
 Conc: 33.10 ng/ml

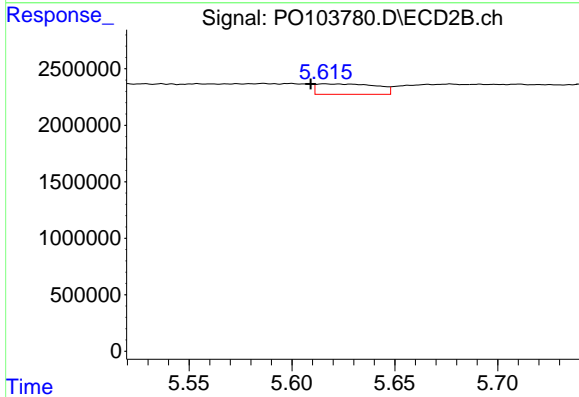




#27 AR-1254-2

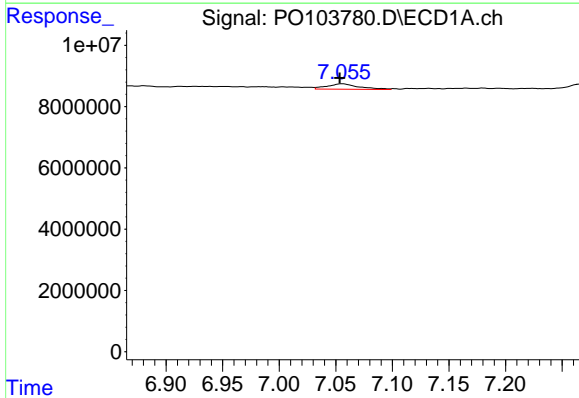
R.T.: 6.688 min  
 Delta R.T.: -0.001 min  
 Response: 707372  
 Conc: 1.95 ng/ml

Instrument :  
 ECD\_O  
 ClientSampleId :



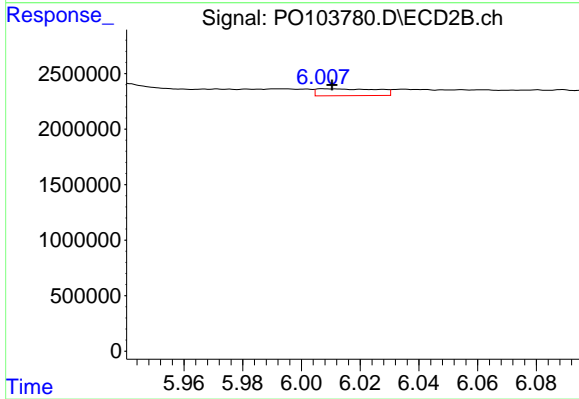
#27 AR-1254-2

R.T.: 5.616 min  
 Delta R.T.: 0.007 min  
 Response: 1872942  
 Conc: 17.74 ng/ml



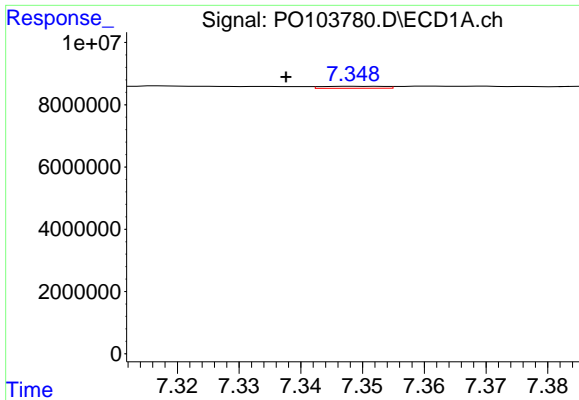
#28 AR-1254-3

R.T.: 7.056 min  
 Delta R.T.: 0.002 min  
 Response: 3525786  
 Conc: 9.68 ng/ml



#28 AR-1254-3

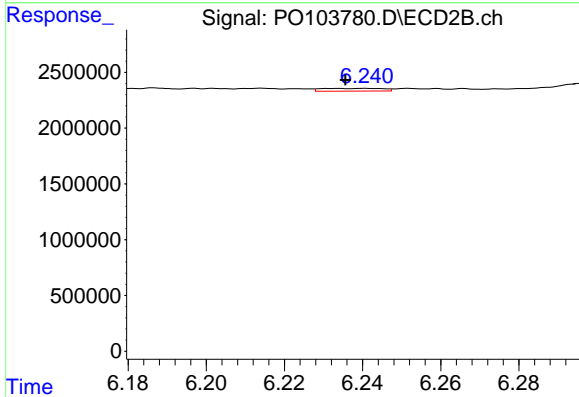
R.T.: 6.008 min  
 Delta R.T.: -0.002 min  
 Response: 887412  
 Conc: 5.16 ng/ml



#29 AR-1254-4

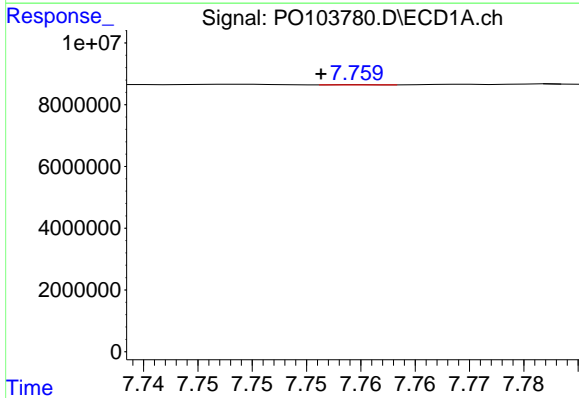
R.T.: 7.349 min  
 Delta R.T.: 0.011 min  
 Response: 440559  
 Conc: 1.55 ng/ml

Instrument :  
 ECD\_O  
 ClientSampleId :



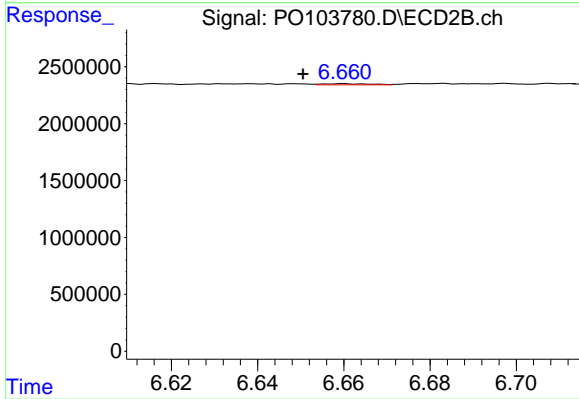
#29 AR-1254-4

R.T.: 6.233 min  
 Delta R.T.: -0.002 min  
 Response: 270293  
 Conc: 2.62 ng/ml



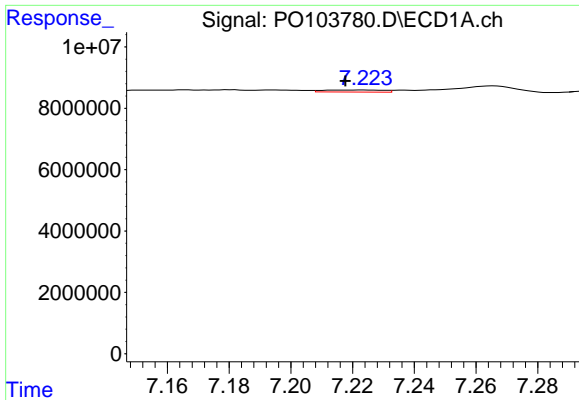
#30 AR-1254-5

R.T.: 7.760 min  
 Delta R.T.: 0.003 min  
 Response: 12604  
 Conc: 0.05 ng/ml



#30 AR-1254-5

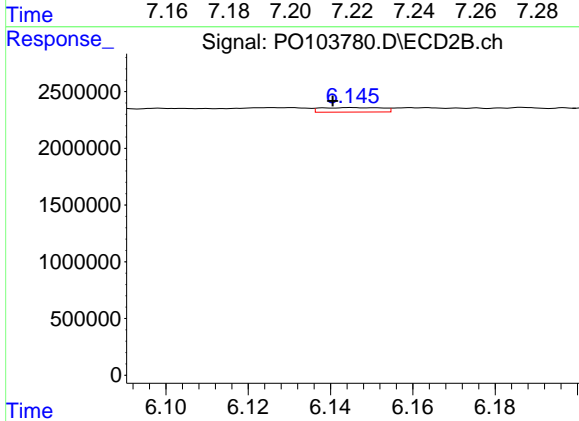
R.T.: 6.660 min  
 Delta R.T.: 0.009 min  
 Response: 77293  
 Conc: 0.56 ng/ml



#31 AR-1260-1

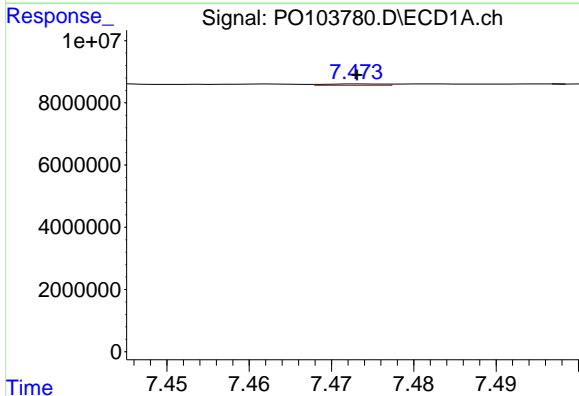
R.T.: 7.224 min  
 Delta R.T.: 0.006 min  
 Response: 902169  
 Conc: 3.45 ng/ml

Instrument :  
 ECD\_O  
 ClientSampleId :



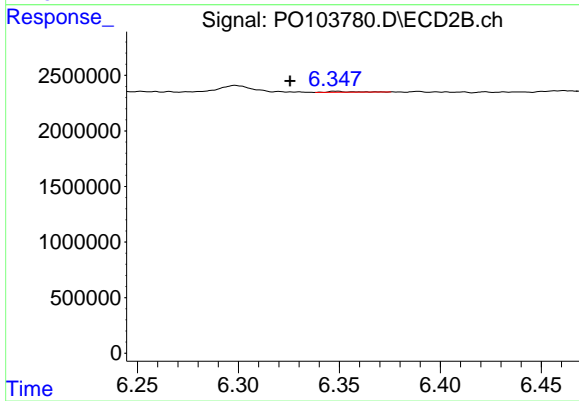
#31 AR-1260-1

R.T.: 6.145 min  
 Delta R.T.: 0.005 min  
 Response: 417393  
 Conc: 3.95 ng/ml



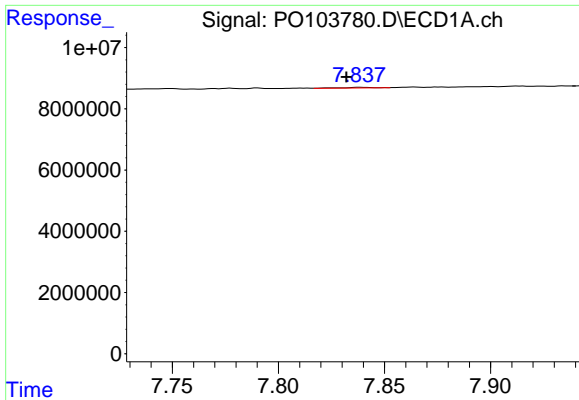
#32 AR-1260-2

R.T.: 7.474 min  
 Delta R.T.: 0.000 min  
 Response: 232670  
 Conc: 0.71 ng/ml



#32 AR-1260-2

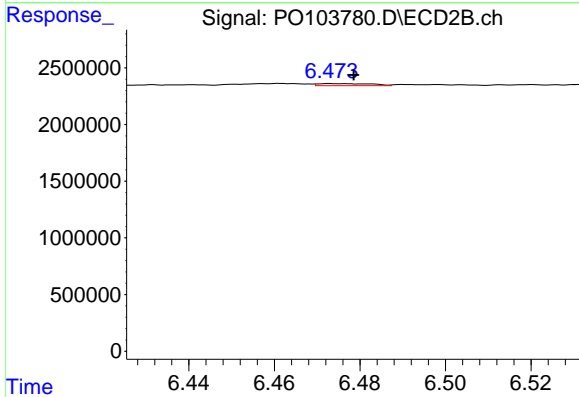
R.T.: 6.348 min  
 Delta R.T.: 0.023 min  
 Response: 53952  
 Conc: 0.43 ng/ml



#33 AR-1260-3

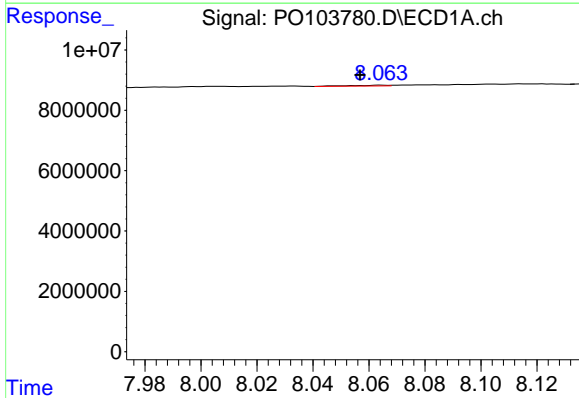
R.T.: 7.838 min  
 Delta R.T.: 0.006 min  
 Response: 189924  
 Conc: 0.77 ng/ml

Instrument :  
 ECD\_O  
 ClientSampleId :



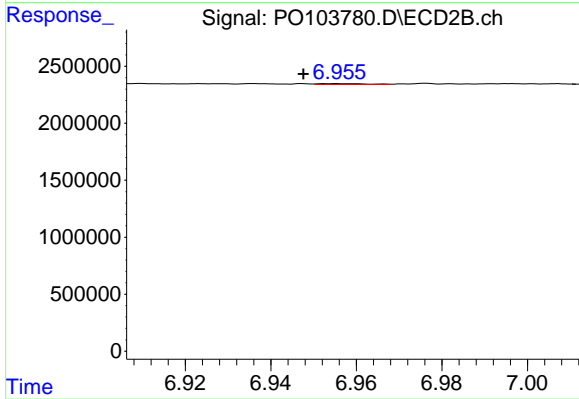
#33 AR-1260-3

R.T.: 6.474 min  
 Delta R.T.: -0.005 min  
 Response: 167002  
 Conc: 1.41 ng/ml



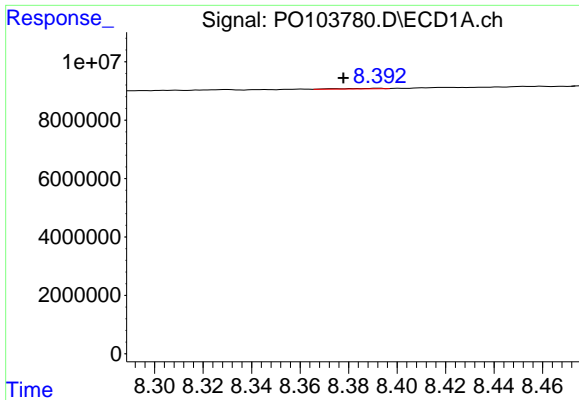
#34 AR-1260-4

R.T.: 8.064 min  
 Delta R.T.: 0.007 min  
 Response: 236546  
 Conc: 0.97 ng/ml



#34 AR-1260-4

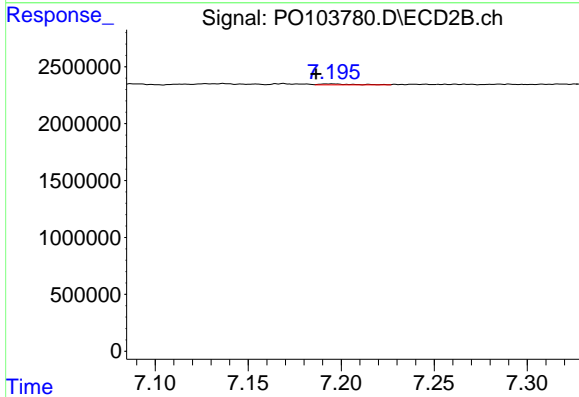
R.T.: 6.955 min  
 Delta R.T.: 0.008 min  
 Response: 68978  
 Conc: 0.77 ng/ml



#35 AR-1260-5

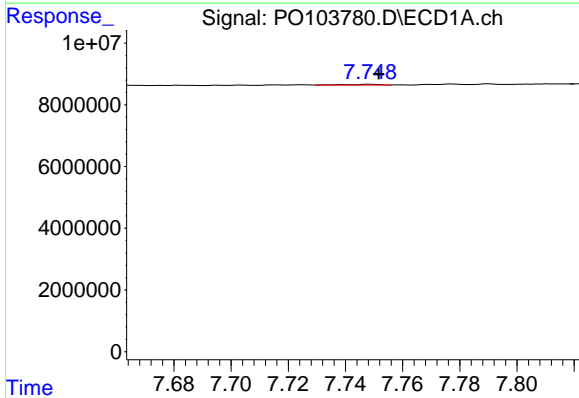
R.T.: 8.393 min  
 Delta R.T.: 0.015 min  
 Response: 222138  
 Conc: 0.41 ng/ml

Instrument :  
 ECD\_O  
 ClientSampleId :



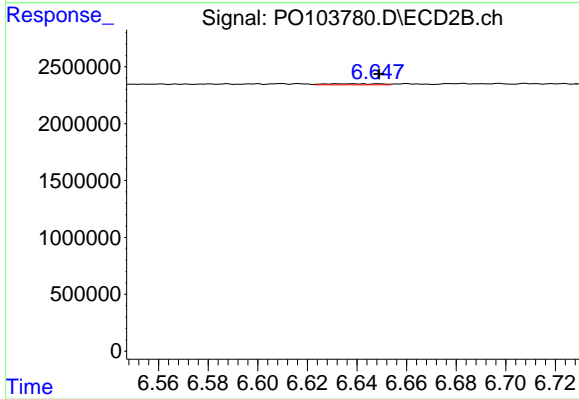
#35 AR-1260-5

R.T.: 7.195 min  
 Delta R.T.: 0.008 min  
 Response: 100719  
 Conc: 0.49 ng/ml



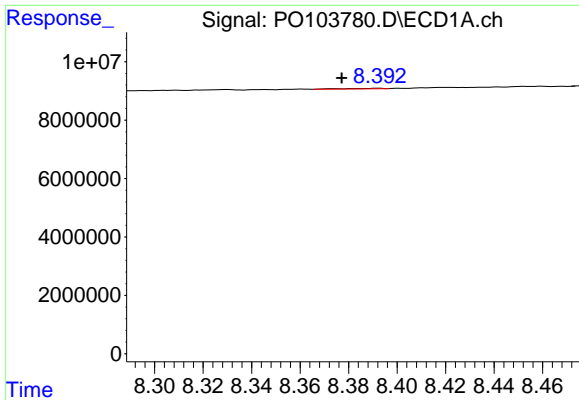
#36 AR-1262-1

R.T.: 7.749 min  
 Delta R.T.: -0.003 min  
 Response: 244827  
 Conc: 1.06 ng/ml



#36 AR-1262-1

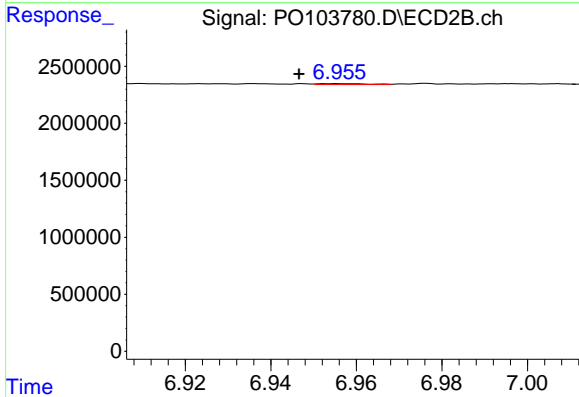
R.T.: 6.638 min  
 Delta R.T.: -0.011 min  
 Response: 141172  
 Conc: 1.84 ng/ml



#37 AR-1262-2

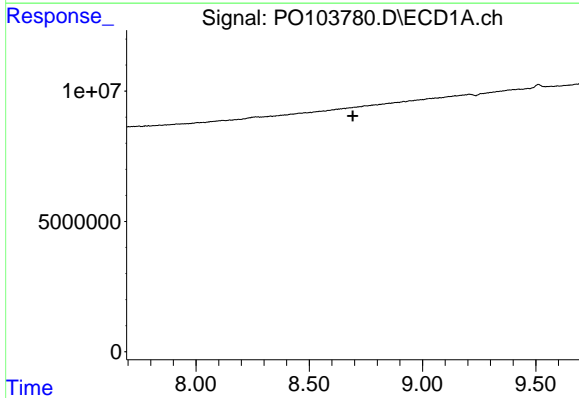
R.T.: 8.393 min  
 Delta R.T.: 0.015 min  
 Response: 222138  
 Conc: 0.34 ng/ml

Instrument :  
 ECD\_O  
 ClientSampleId :



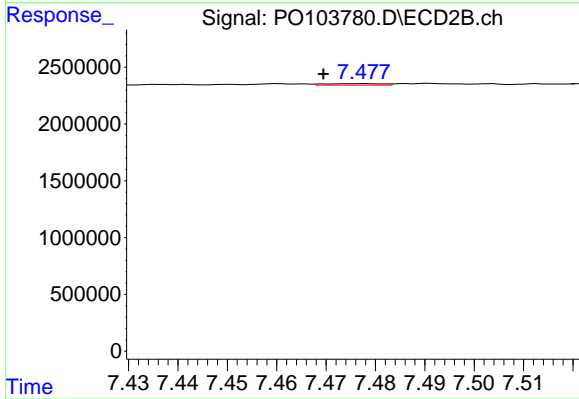
#37 AR-1262-2

R.T.: 6.955 min  
 Delta R.T.: 0.009 min  
 Response: 68978  
 Conc: 0.59 ng/ml



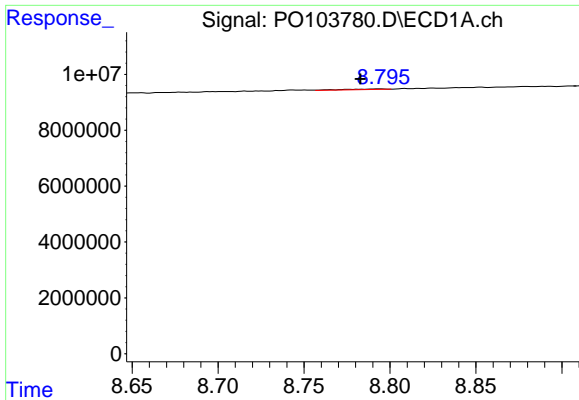
#38 AR-1262-3

R.T.: 8.678 min  
 Delta R.T.: -0.014 min  
 Response: -20350  
 Conc: N.D.



#38 AR-1262-3

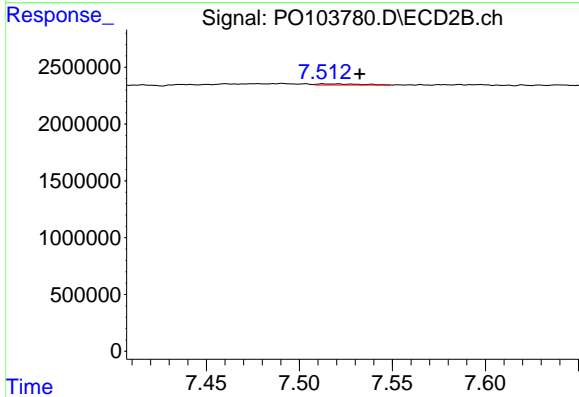
R.T.: 7.477 min  
 Delta R.T.: 0.008 min  
 Response: 103623  
 Conc: 1.15 ng/ml



#39 AR-1262-4

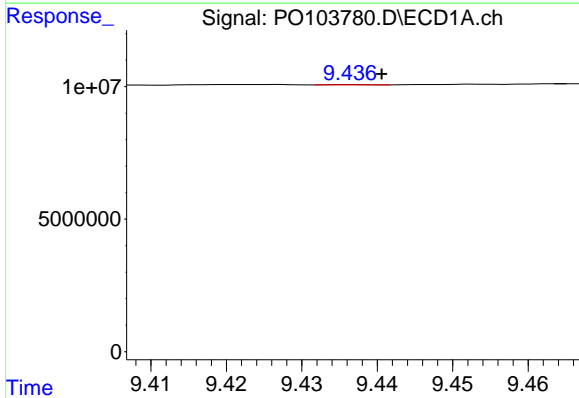
R.T.: 8.794 min  
 Delta R.T.: 0.011 min  
 Response: 343203  
 Conc: 1.02 ng/ml

Instrument :  
 ECD\_O  
 ClientSampleId :



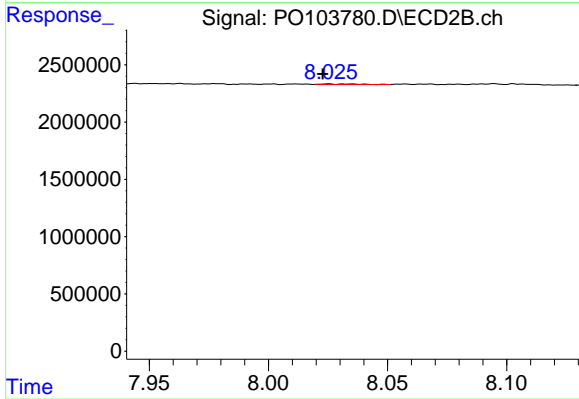
#39 AR-1262-4

R.T.: 7.521 min  
 Delta R.T.: -0.012 min  
 Response: 162558  
 Conc: 0.97 ng/ml



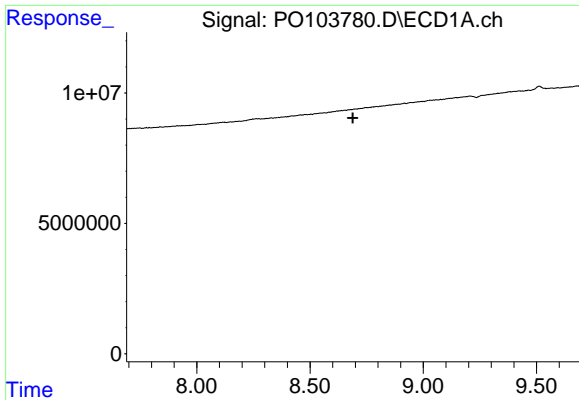
#40 AR-1262-5

R.T.: 9.437 min  
 Delta R.T.: -0.003 min  
 Response: 38368  
 Conc: 0.16 ng/ml



#40 AR-1262-5

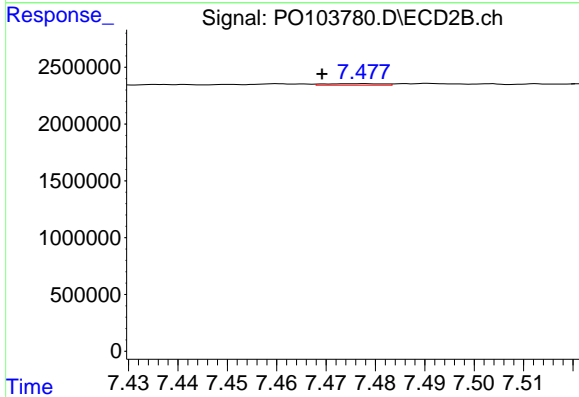
R.T.: 8.025 min  
 Delta R.T.: 0.002 min  
 Response: 50242  
 Conc: 0.70 ng/ml



#41 AR-1268-1

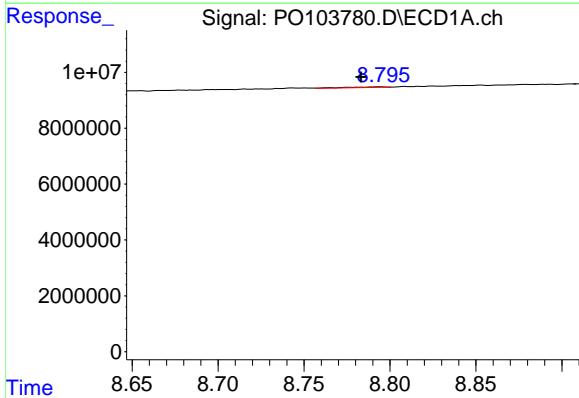
R.T.: 8.678 min  
 Delta R.T.: -0.011 min  
 Response: -20350  
 Conc: N.D.

Instrument :  
 ECD\_O  
 ClientSampleId :



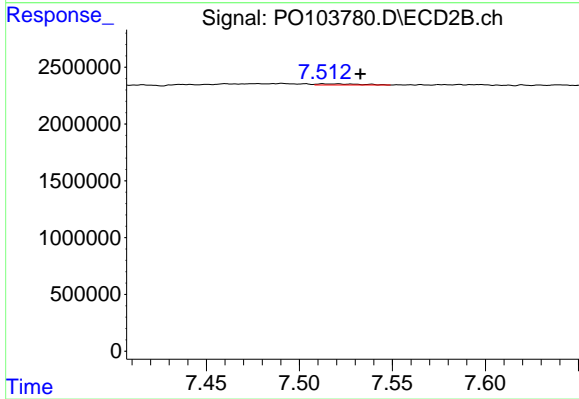
#41 AR-1268-1

R.T.: 7.477 min  
 Delta R.T.: 0.008 min  
 Response: 103623  
 Conc: 0.40 ng/ml



#42 AR-1268-2

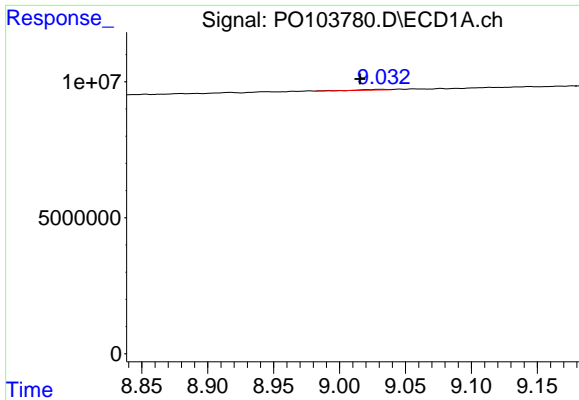
R.T.: 8.794 min  
 Delta R.T.: 0.011 min  
 Response: 343203  
 Conc: 0.48 ng/ml



#42 AR-1268-2

R.T.: 7.521 min  
 Delta R.T.: -0.012 min  
 Response: 162558  
 Conc: 0.65 ng/ml

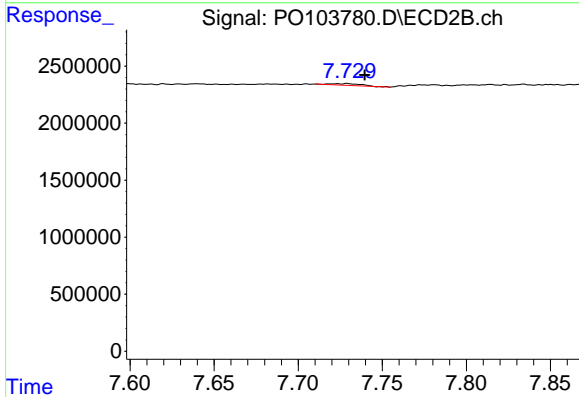




#43 AR-1268-3

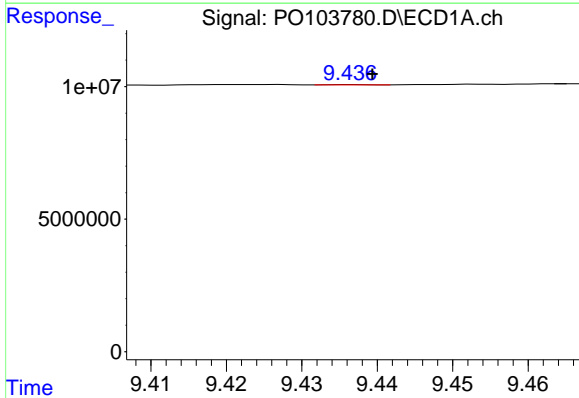
R.T.: 9.032 min  
 Delta R.T.: 0.016 min  
 Response: 323884  
 Conc: 0.51 ng/ml

Instrument :  
 ECD\_O  
 ClientSampleId :



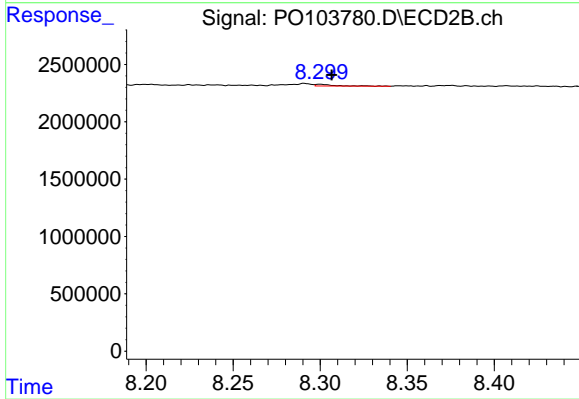
#43 AR-1268-3

R.T.: 7.729 min  
 Delta R.T.: -0.010 min  
 Response: 177485  
 Conc: 0.88 ng/ml



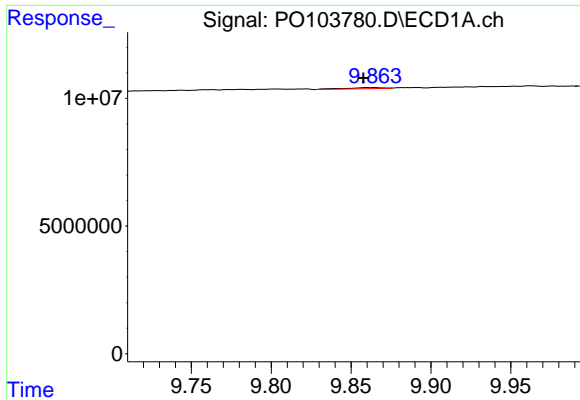
#44 AR-1268-4

R.T.: 9.437 min  
 Delta R.T.: -0.002 min  
 Response: 38368  
 Conc: 0.15 ng/ml



#44 AR-1268-4

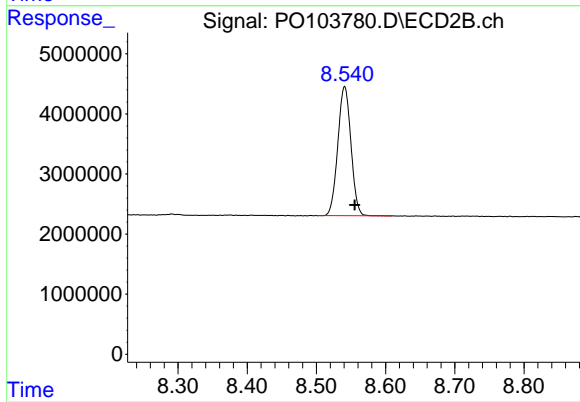
R.T.: 8.300 min  
 Delta R.T.: -0.007 min  
 Response: 99961  
 Conc: 0.18 ng/ml



#45 AR-1268-5

R.T.: 9.865 min  
 Delta R.T.: 0.007 min  
 Response: 801581  
 Conc: 0.41 ng/ml

Instrument :  
 ECD\_O  
 ClientSampleId :



#45 AR-1268-5

R.T.: 8.541 min  
 Delta R.T.: -0.014 min  
 Response: 2832332  
 Conc: 121.69 ng/ml