

Data Path : Z:\pestpcbsrv\HPCHEM1\ECD_0\Data\P0051519\
 Data File : P0056274.D
 Signal(s) : Signal #1: ECD1A.CH Signal #2: ECD2B.CH
 Acq On : 15 May 2019 21:53
 Operator : SM/SJ
 Sample : K2768-06DL 2X
 Misc :
 ALS Vial : 12 Sample Multiplier: 1

Instrument :
 ECD_0
 ClientSampleId :
 P026-SS014-0612-01DL

Integration File signal 1: autoint1.e
 Integration File signal 2: autoint2.e
 Quant Time: May 16 02:19:58 2019
 Quant Method : Z:\pestpcbsrv\HPCHEM1\ECD_0\methods\P0050319.M
 Quant Title : GC EXTRACTABLES
 QLast Update : Fri May 03 15:20:04 2019
 Response via : Initial Calibration
 Integrator: ChemStation 6890 Scale Mode: Small noise peaks clipped

Volume Inj. : 2 µl
 Signal #1 Phase : ZB-MR1 Signal #2 Phase: ZB-MR2
 Signal #1 Info : 30Mx0.32mmx 0.50µ Signal #2 Info : 30M x 0.32mm x 0.25µm

Compound	RT#1	RT#2	Resp#1	Resp#2	ng/ml	ng/ml
System Monitoring Compounds						
1) SA Tetrachlo...	4.260	3.578	146205	142410	4.886	5.042
2) SA Decachlor...	9.845	0.000	130870	0	3.498	N.D. #
Target Compounds						
6) L1 AR-1016-4	5.691	0.000	32821	0	31.401	N.D. #
7) L1 AR-1016-5	5.893	0.000	18552	0	16.468	N.D. #
14) L3 AR-1232-4	5.691	0.000	32821	0	64.539	N.D. #
15) L3 AR-1232-5	5.691	0.000	32821	0	75.594	N.D. #
20) L4 AR-1242-5	6.334	5.439	28939	139680	26.453	116.361 #
22) L5 AR-1248-2	5.691	0.000	32821	0	24.610	N.D. #
23) L5 AR-1248-3	5.893	0.000	18552	0	12.563	N.D. #
24) L5 AR-1248-4	6.295	0.000	39532	0	22.671	N.D. #
25) L5 AR-1248-5	6.334	5.439	28939	139680	17.325	93.262 #
26) L6 AR-1254-1	6.295	5.439	39532	139680	18.826	52.191 #
27) L6 AR-1254-2	6.484	5.585	281832	229985	84.919	94.152
28) L6 AR-1254-3	6.850	5.999	212463	412089	58.441	103.863 #
29) L6 AR-1254-4	7.133	6.241	133322	203567	49.003	75.925 #
30) L6 AR-1254-5	7.580	6.663	106010	740027	36.987	204.502 #
31) L7 AR-1260-1	7.011	6.114	805940	738841	373.208	335.351
32) L7 AR-1260-2	7.268	6.301	1096750	1053334	418.785	344.951
33) L7 AR-1260-3	7.624	6.454	706929	787733	353.467	316.101
34) L7 AR-1260-4	7.849	6.922	822159	647241	355.512	313.666
35) L7 AR-1260-5	8.158	7.163	1365560	1441617	321.890	287.045
36) L8 AR-1262-1	7.624	6.663	706929	740027	220.513	180.460
37) L8 AR-1262-2	8.158	7.163	1365560	1441617	254.355	230.554
38) L8 AR-1262-3	8.468	7.443	932292	351563	256.910	142.740 #
39) L8 AR-1262-4	8.535	7.508	176981	976345	65.184	238.427 #
40) L8 AR-1262-5	9.154	8.001	309425	298882	171.283	175.386
41) L9 AR-1268-1	8.468	7.443	932292	351563	154.382	50.740 #
42) L9 AR-1268-2	8.535	7.508	176981	976345	32.333	171.615 #
44) L9 AR-1268-4	9.154	8.001	309425	298882	157.693	157.996
45) L9 AR-1268-5	9.537	0.000	69315	0	5.138	N.D. #

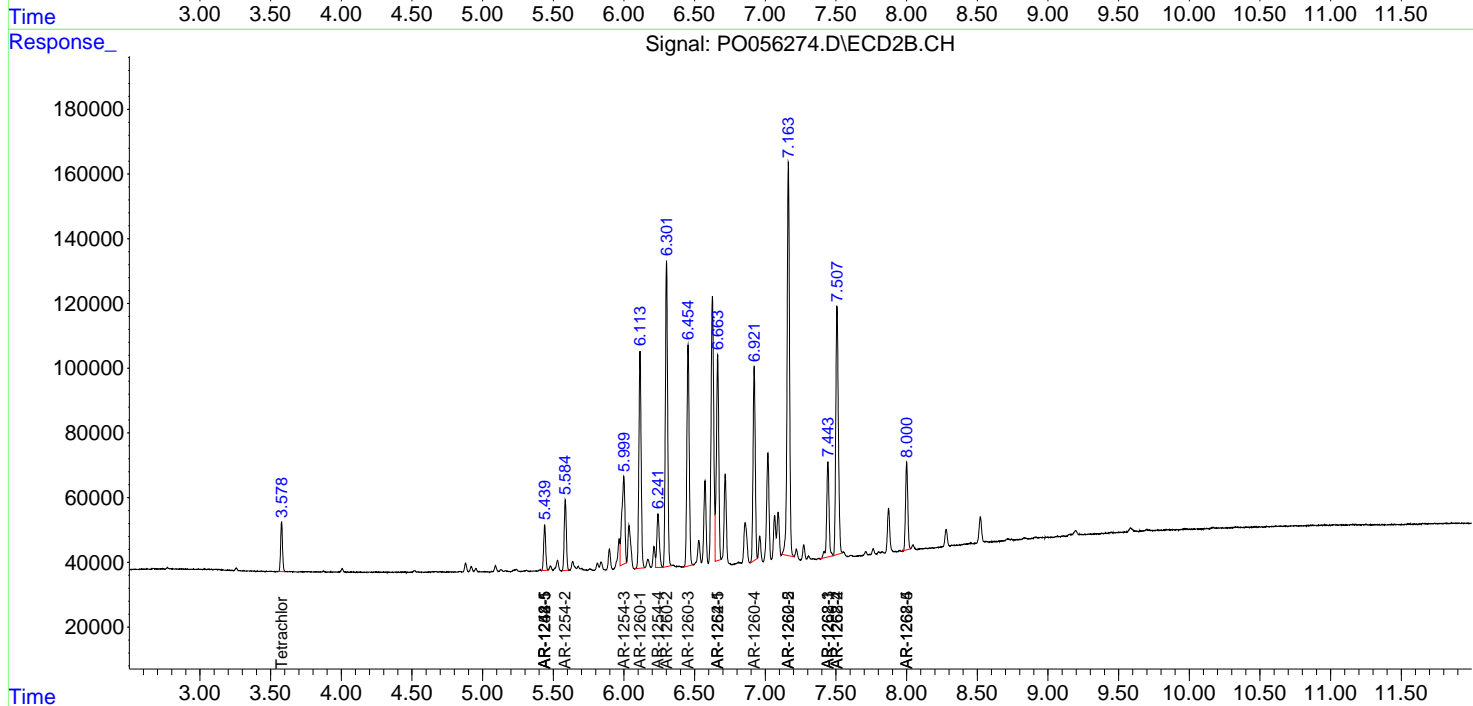
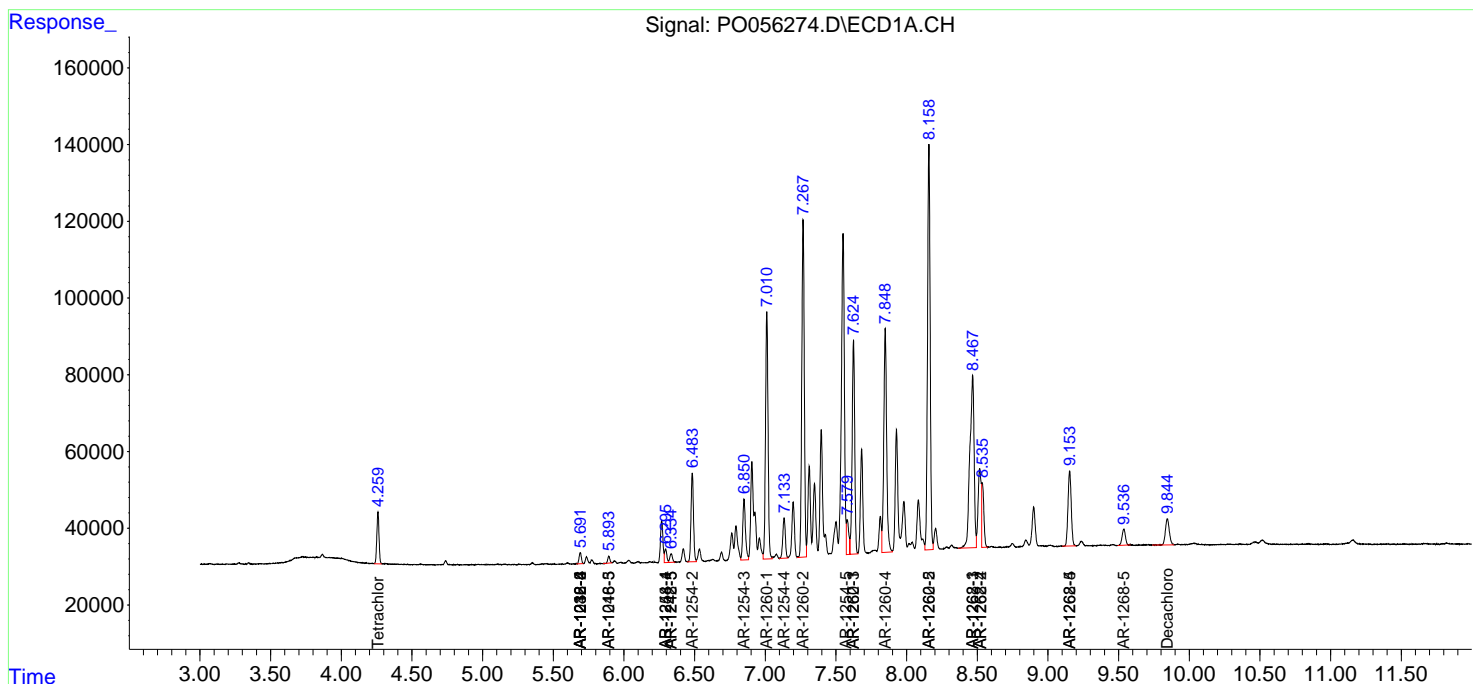
(f)=RT Delta > 1/2 Window (#)=Amounts differ by > 25% (m)=manual int.

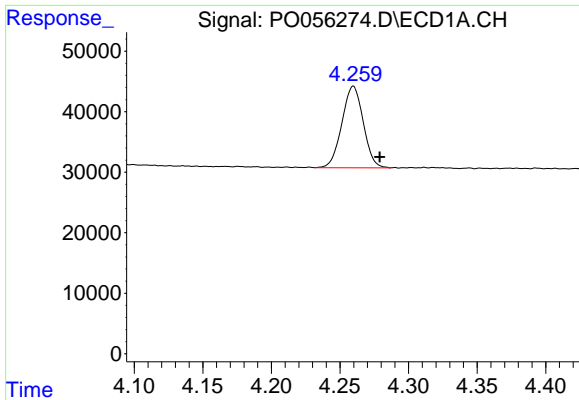
Data Path : Z:\pestpcbsrv\HPCHEM1\ECD_0\Data\PO051519\
 Data File : PO056274.D
 Signal(s) : Signal #1: ECD1A.CH Signal #2: ECD2B.CH
 Acq On : 15 May 2019 21:53
 Operator : SM/SJ
 Sample : K2768-06DL 2X
 Misc :
 ALS Vial : 12 Sample Multiplier: 1

Instrument :
 ECD_O
 ClientSampleId :
 P026-SS014-0612-01DL

Integration File signal 1: autoint1.e
 Integration File signal 2: autoint2.e
 Quant Time: May 16 02:19:58 2019
 Quant Method : Z:\pestpcbsrv\HPCHEM1\ECD_0\methods\PO050319.M
 Quant Title : GC EXTRACTABLES
 QLast Update : Fri May 03 15:20:04 2019
 Response via : Initial Calibration
 Integrator: ChemStation 6890 Scale Mode: Small noise peaks clipped

Volume Inj. : 2 µl
 Signal #1 Phase : ZB-MR1 Signal #2 Phase: ZB-MR2
 Signal #1 Info : 30Mx0.32mmx 0.50µ Signal #2 Info : 30M x 0.32mm x 0.25µm

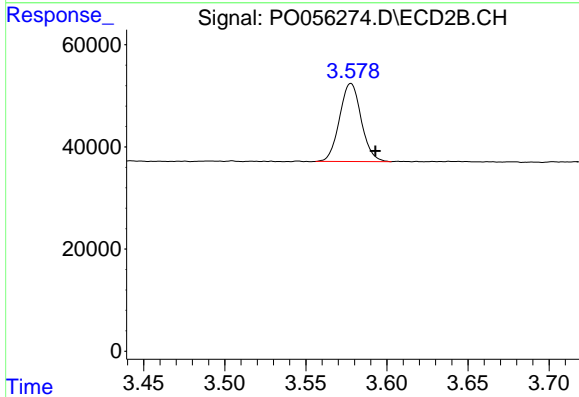




#1 Tetrachloro-m-xylene

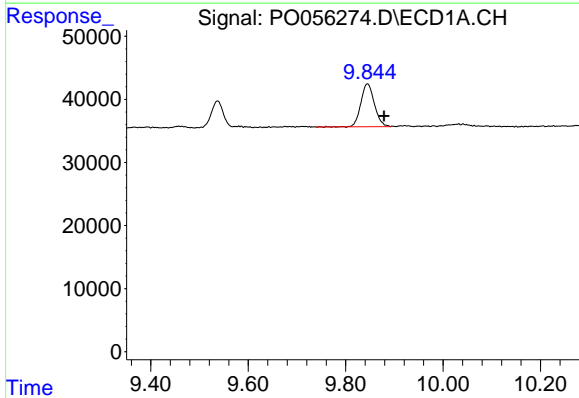
R.T.: 4.260 min
 Delta R.T.: -0.019 min
 Response: 146205
 Conc: 4.89 ng/ml

Instrument :
 ECD_O
 ClientSampleId :
 P026-SS014-0612-01DL



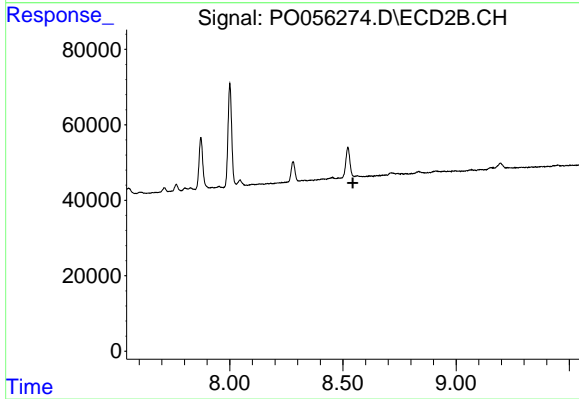
#1 Tetrachloro-m-xylene

R.T.: 3.578 min
 Delta R.T.: -0.015 min
 Response: 142410
 Conc: 5.04 ng/ml



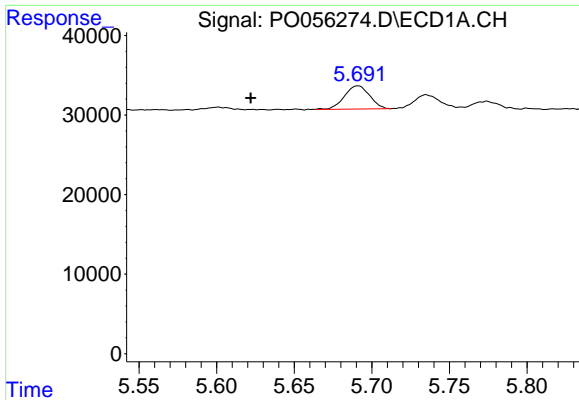
#2 Decachlorobiphenyl

R.T.: 9.845 min
 Delta R.T.: -0.034 min
 Response: 130870
 Conc: 3.50 ng/ml



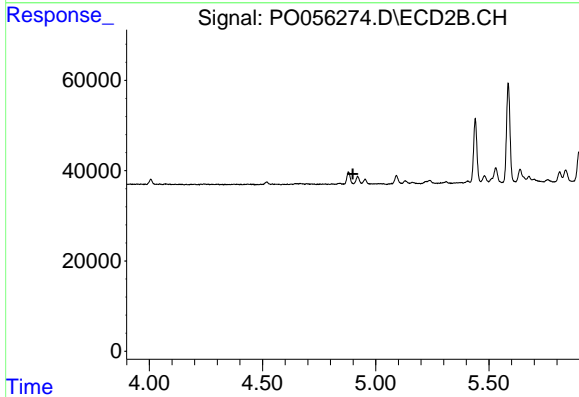
#2 Decachlorobiphenyl

R.T.: 0.000 min
 Exp R.T. : 8.544 min
 Response: 0
 Conc: N.D.

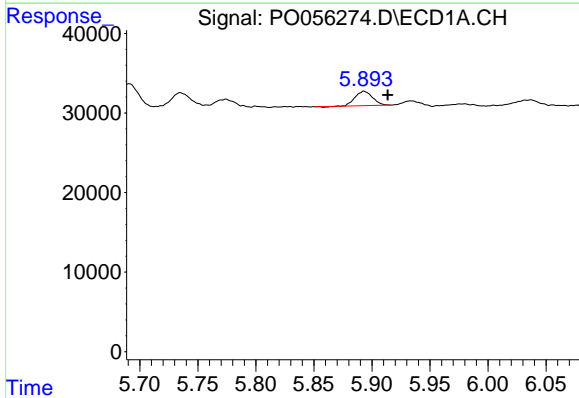


#6 AR-1016-4
 R.T.: 5.691 min
 Delta R.T.: 0.069 min
 Response: 32821
 Conc: 31.40 ng/ml

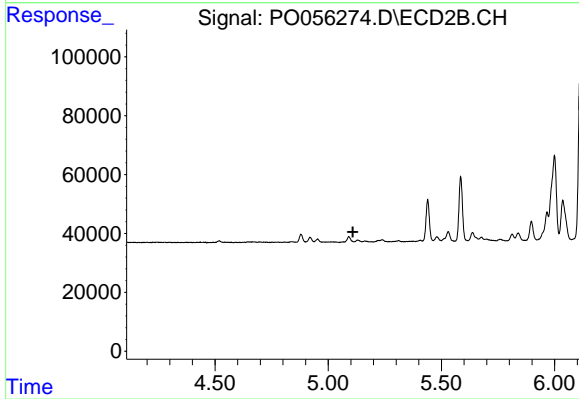
Instrument :
 ECD_O
 ClientSampleId :
 P026-SS014-0612-01DL



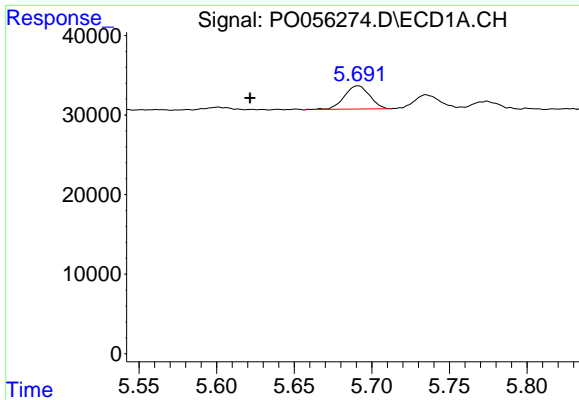
#6 AR-1016-4
 R.T.: 0.000 min
 Exp R.T. : 4.899 min
 Response: 0
 Conc: N.D.



#7 AR-1016-5
 R.T.: 5.893 min
 Delta R.T.: -0.020 min
 Response: 18552
 Conc: 16.47 ng/ml

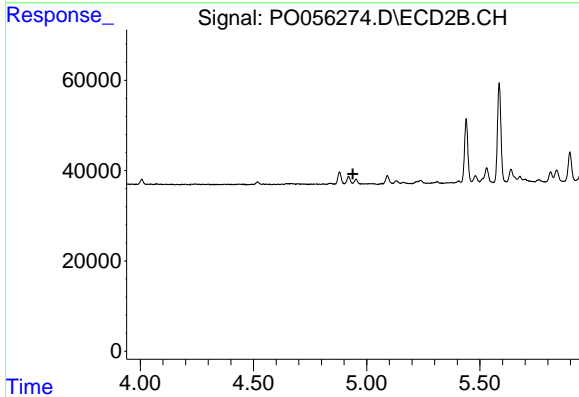


#7 AR-1016-5
 R.T.: 0.000 min
 Exp R.T. : 5.109 min
 Response: 0
 Conc: N.D.

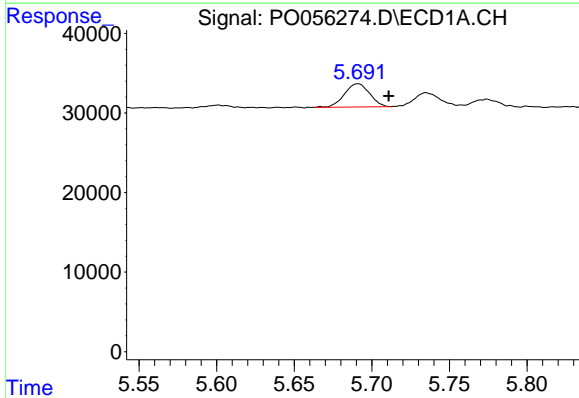


#14 AR-1232-4
 R.T.: 5.691 min
 Delta R.T.: 0.070 min
 Response: 32821
 Conc: 64.54 ng/ml

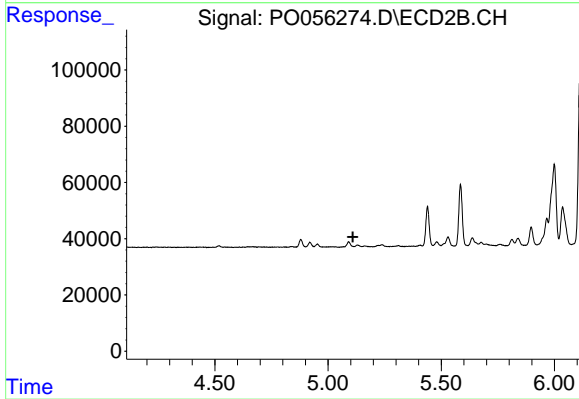
Instrument :
 ECD_O
 ClientSampleId :
 P026-SS014-0612-01DL



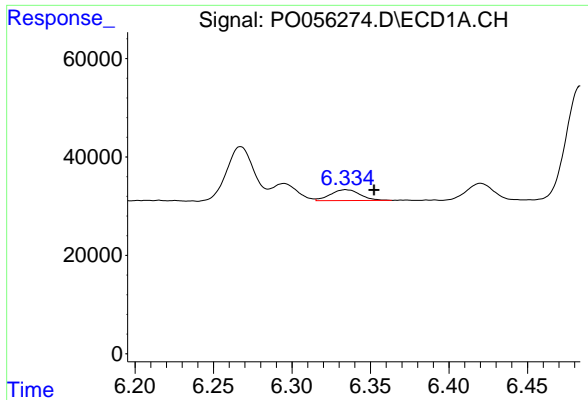
#14 AR-1232-4
 R.T.: 0.000 min
 Exp R.T. : 4.939 min
 Response: 0
 Conc: N.D.



#15 AR-1232-5
 R.T.: 5.691 min
 Delta R.T.: -0.020 min
 Response: 32821
 Conc: 75.59 ng/ml

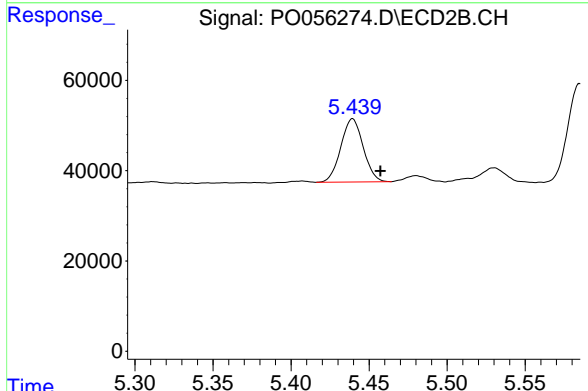


#15 AR-1232-5
 R.T.: 0.000 min
 Exp R.T. : 5.110 min
 Response: 0
 Conc: N.D.

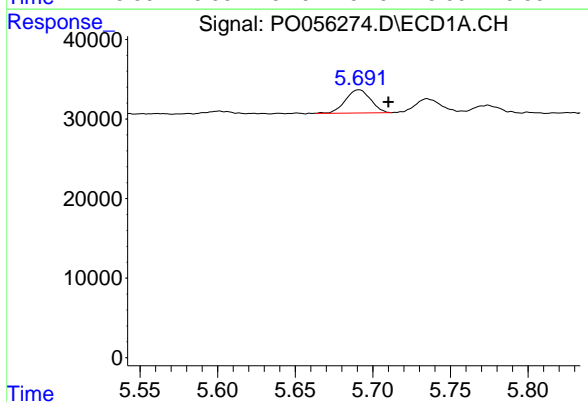


#20 AR-1242-5
 R.T.: 6.334 min
 Delta R.T.: -0.018 min
 Response: 28939
 Conc: 26.45 ng/ml

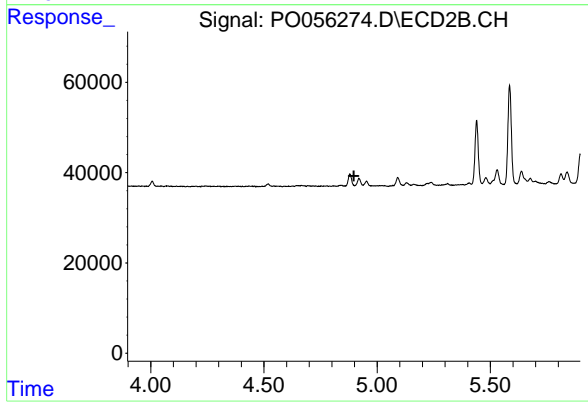
Instrument :
 ECD_O
ClientSampleId :
 P026-SS014-0612-01DL



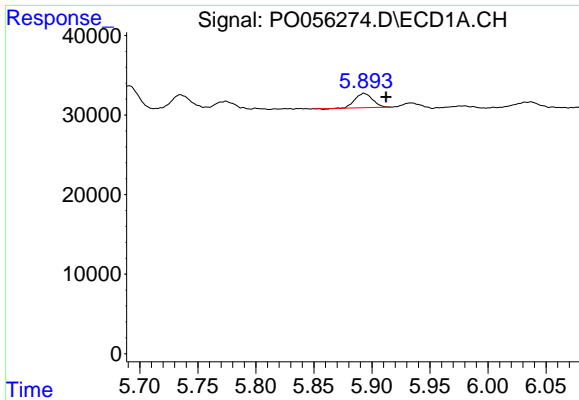
#20 AR-1242-5
 R.T.: 5.439 min
 Delta R.T.: -0.018 min
 Response: 139680
 Conc: 116.36 ng/ml



#22 AR-1248-2
 R.T.: 5.691 min
 Delta R.T.: -0.019 min
 Response: 32821
 Conc: 24.61 ng/ml



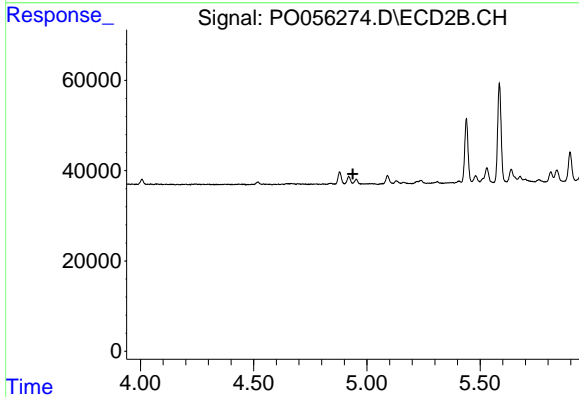
#22 AR-1248-2
 R.T.: 0.000 min
 Exp R.T. : 4.898 min
 Response: 0
 Conc: N.D.



#23 AR-1248-3

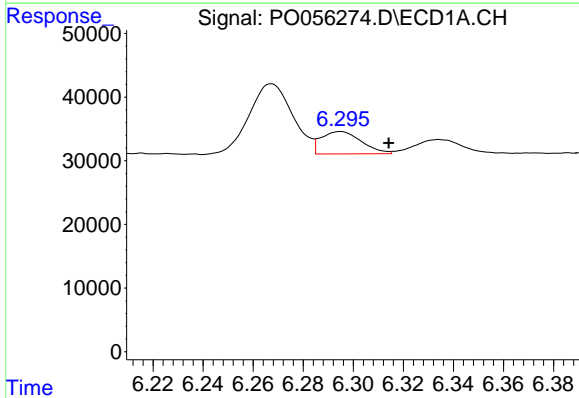
R.T.: 5.893 min
 Delta R.T.: -0.019 min
 Response: 18552
 Conc: 12.56 ng/ml

Instrument :
 ECD_O
 ClientSampleId :
 P026-SS014-0612-01DL



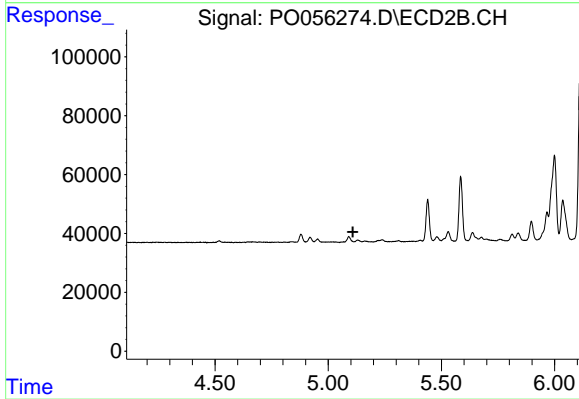
#23 AR-1248-3

R.T.: 0.000 min
 Exp R.T. : 4.938 min
 Response: 0
 Conc: N.D.



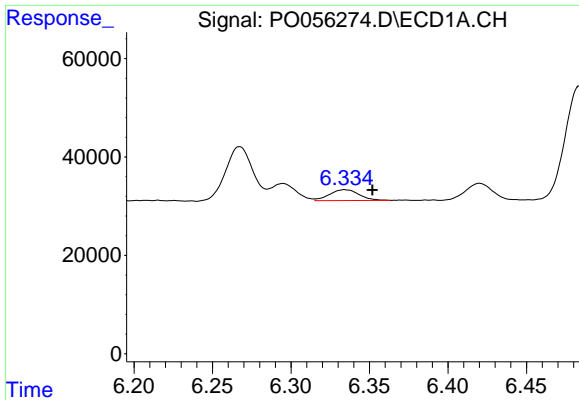
#24 AR-1248-4

R.T.: 6.295 min
 Delta R.T.: -0.019 min
 Response: 39532
 Conc: 22.67 ng/ml



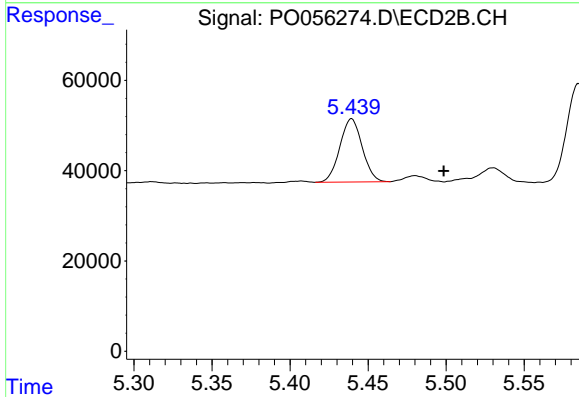
#24 AR-1248-4

R.T.: 0.000 min
 Exp R.T. : 5.109 min
 Response: 0
 Conc: N.D.

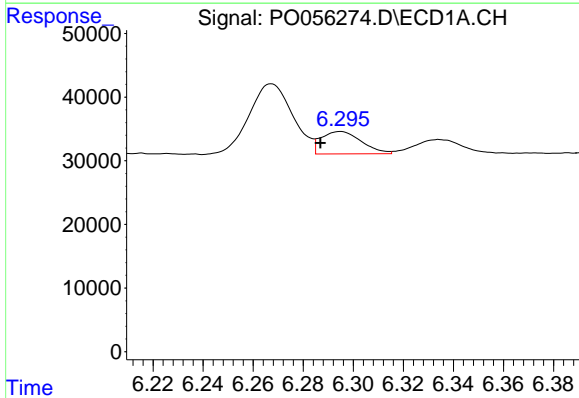


#25 AR-1248-5
 R.T.: 6.334 min
 Delta R.T.: -0.018 min
 Response: 28939
 Conc: 17.33 ng/ml

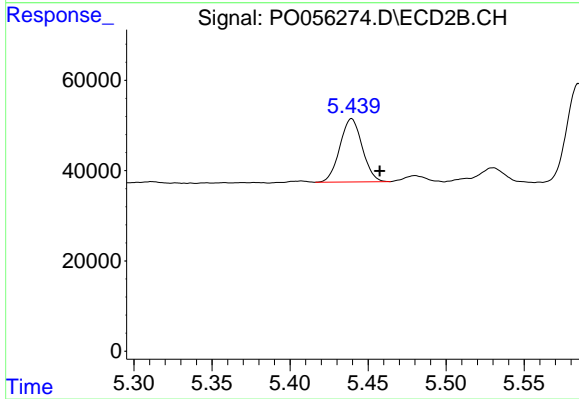
Instrument :
 ECD_O
ClientSampleId :
 P026-SS014-0612-01DL



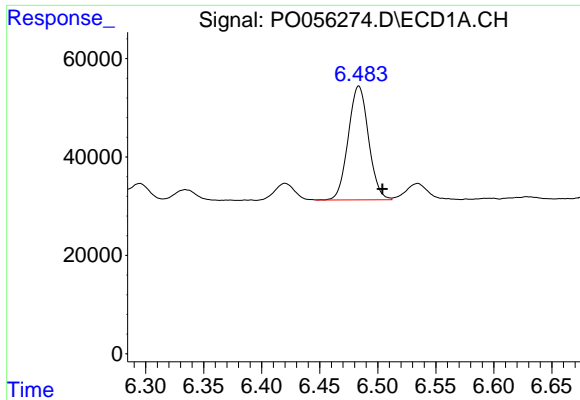
#25 AR-1248-5
 R.T.: 5.439 min
 Delta R.T.: -0.059 min
 Response: 139680
 Conc: 93.26 ng/ml



#26 AR-1254-1
 R.T.: 6.295 min
 Delta R.T.: 0.008 min
 Response: 39532
 Conc: 18.83 ng/ml



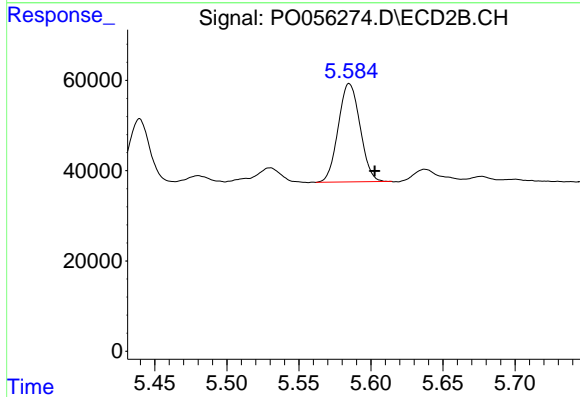
#26 AR-1254-1
 R.T.: 5.439 min
 Delta R.T.: -0.018 min
 Response: 139680
 Conc: 52.19 ng/ml



#27 AR-1254-2

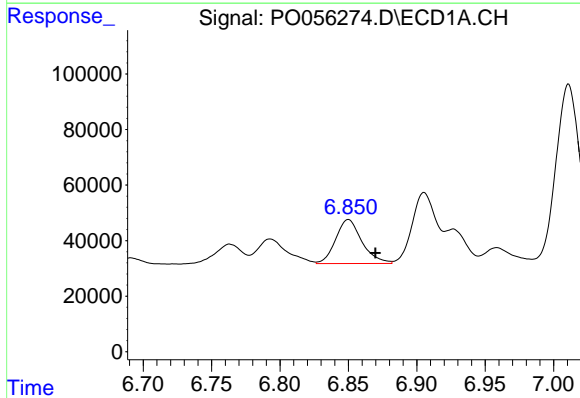
R.T.: 6.484 min
 Delta R.T.: -0.020 min
 Response: 281832
 Conc: 84.92 ng/ml

Instrument :
 ECD_O
ClientSampleId :
 P026-SS014-0612-01DL



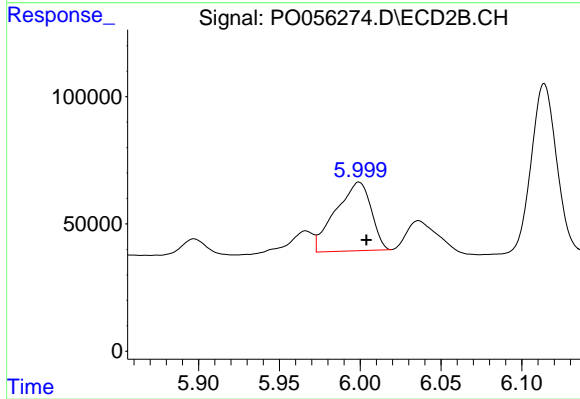
#27 AR-1254-2

R.T.: 5.585 min
 Delta R.T.: -0.018 min
 Response: 229985
 Conc: 94.15 ng/ml



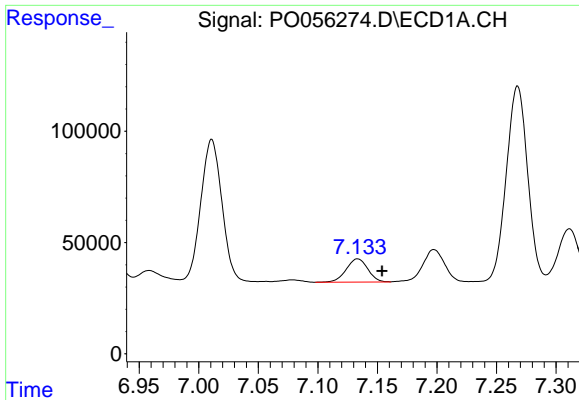
#28 AR-1254-3

R.T.: 6.850 min
 Delta R.T.: -0.020 min
 Response: 212463
 Conc: 58.44 ng/ml



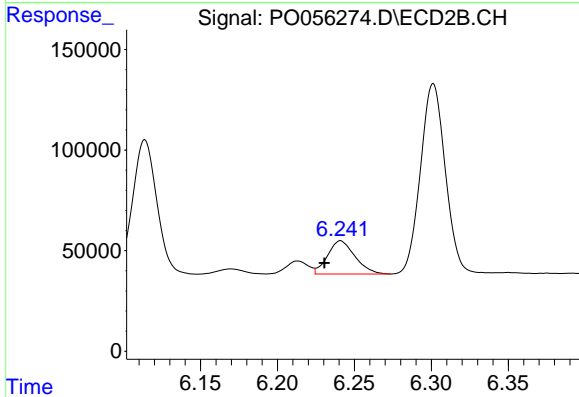
#28 AR-1254-3

R.T.: 5.999 min
 Delta R.T.: -0.005 min
 Response: 412089
 Conc: 103.86 ng/ml

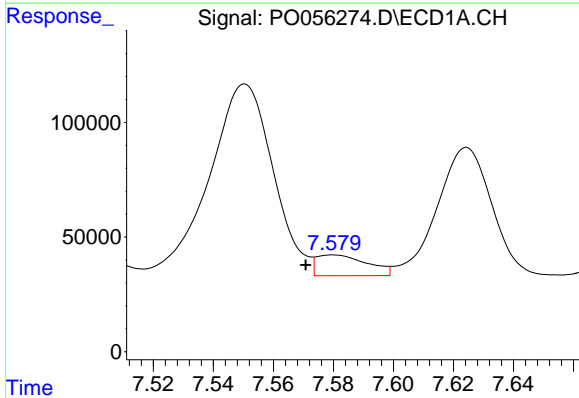


#29 AR-1254-4
 R.T.: 7.133 min
 Delta R.T.: -0.021 min
 Response: 133322
 Conc: 49.00 ng/ml

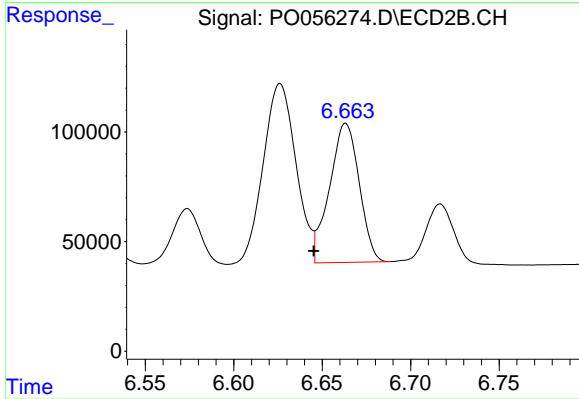
Instrument :
 ECD_O
ClientSampleId :
 P026-SS014-0612-01DL



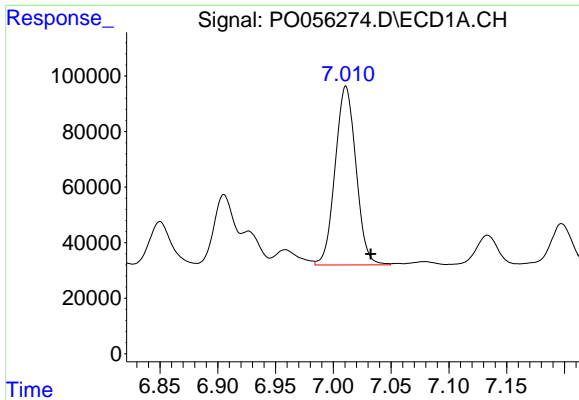
#29 AR-1254-4
 R.T.: 6.241 min
 Delta R.T.: 0.010 min
 Response: 203567
 Conc: 75.92 ng/ml



#30 AR-1254-5
 R.T.: 7.580 min
 Delta R.T.: 0.009 min
 Response: 106010
 Conc: 36.99 ng/ml



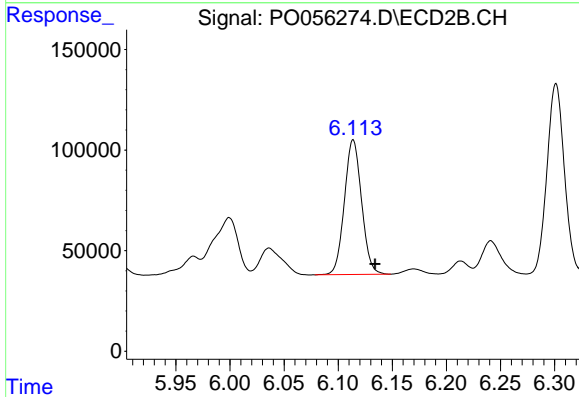
#30 AR-1254-5
 R.T.: 6.663 min
 Delta R.T.: 0.018 min
 Response: 740027
 Conc: 204.50 ng/ml



#31 AR-1260-1

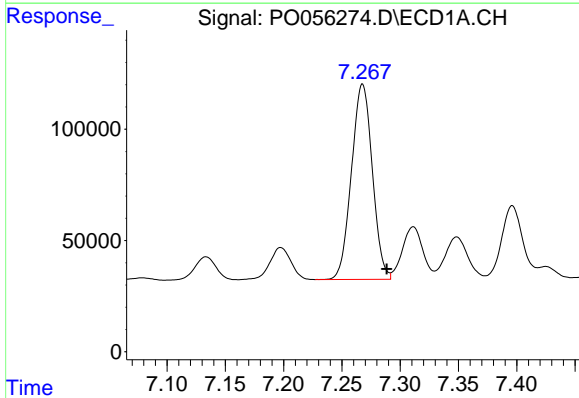
R.T.: 7.011 min
 Delta R.T.: -0.021 min
 Response: 805940
 Conc: 373.21 ng/ml

Instrument :
 ECD_O
 ClientSampleId :
 P026-SS014-0612-01DL



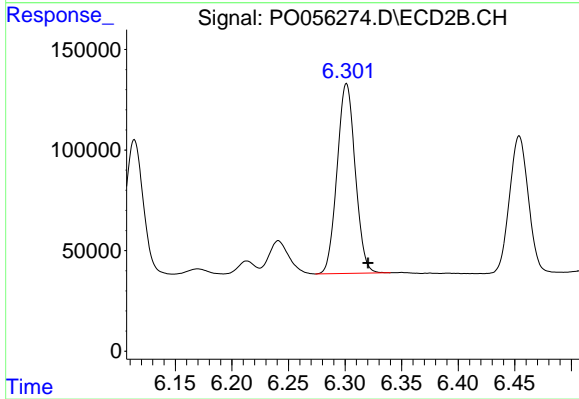
#31 AR-1260-1

R.T.: 6.114 min
 Delta R.T.: -0.020 min
 Response: 738841
 Conc: 335.35 ng/ml



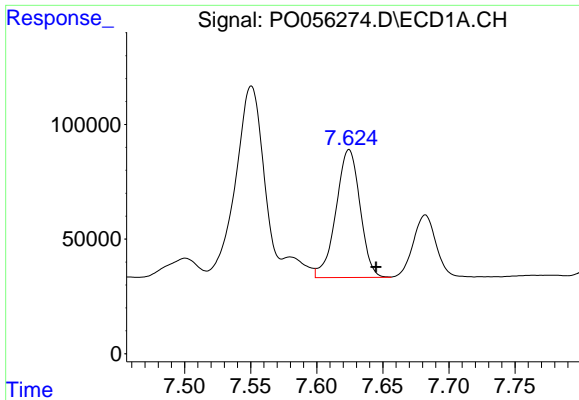
#32 AR-1260-2

R.T.: 7.268 min
 Delta R.T.: -0.021 min
 Response: 1096750
 Conc: 418.78 ng/ml



#32 AR-1260-2

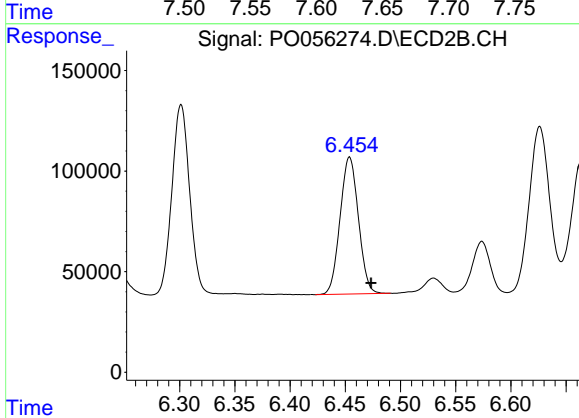
R.T.: 6.301 min
 Delta R.T.: -0.019 min
 Response: 1053334
 Conc: 344.95 ng/ml



#33 AR-1260-3

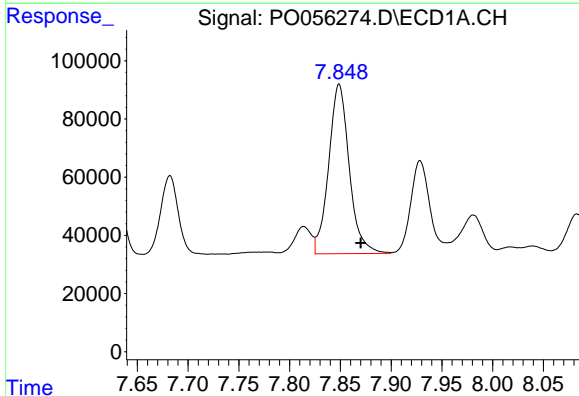
R.T.: 7.624 min
 Delta R.T.: -0.021 min
 Response: 706929
 Conc: 353.47 ng/ml

Instrument :
 ECD_O
ClientSampled :
 P026-SS014-0612-01DL



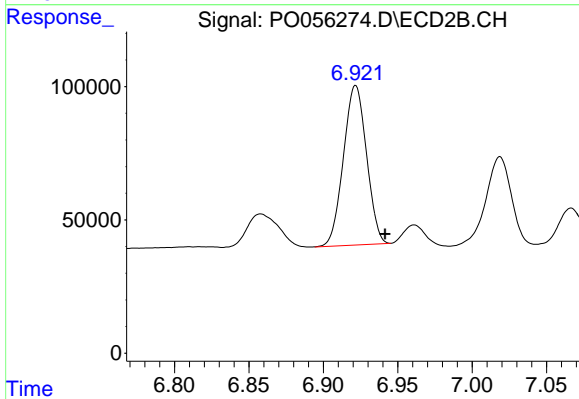
#33 AR-1260-3

R.T.: 6.454 min
 Delta R.T.: -0.019 min
 Response: 787733
 Conc: 316.10 ng/ml



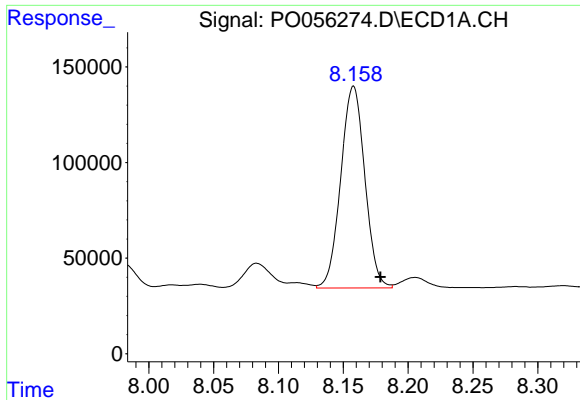
#34 AR-1260-4

R.T.: 7.849 min
 Delta R.T.: -0.021 min
 Response: 822159
 Conc: 355.51 ng/ml



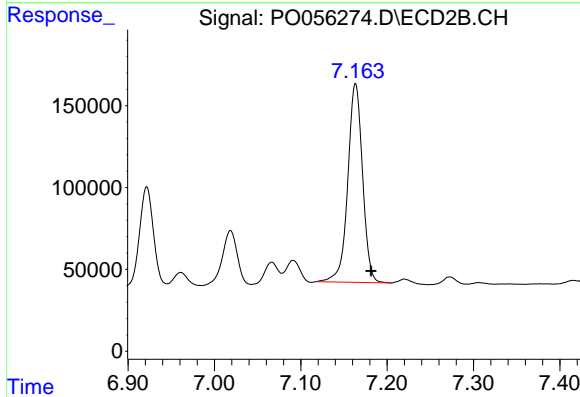
#34 AR-1260-4

R.T.: 6.922 min
 Delta R.T.: -0.020 min
 Response: 647241
 Conc: 313.67 ng/ml

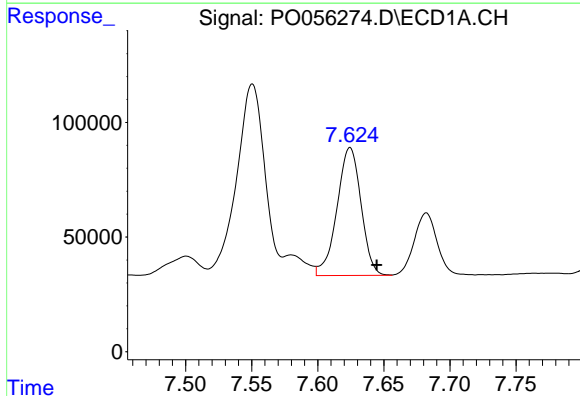


#35 AR-1260-5
 R.T.: 8.158 min
 Delta R.T.: -0.021 min
 Response: 1365560
 Conc: 321.89 ng/ml

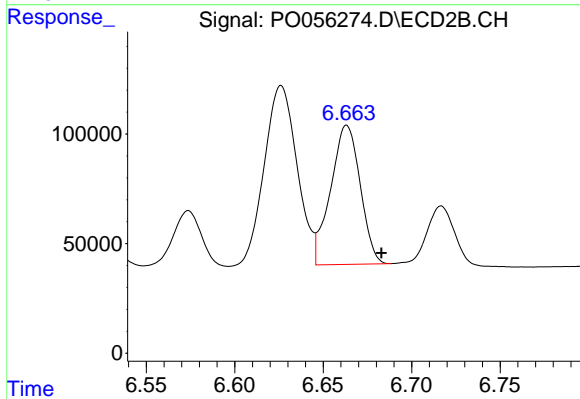
Instrument :
 ECD_O
 ClientSampleId :
 P026-SS014-0612-01DL



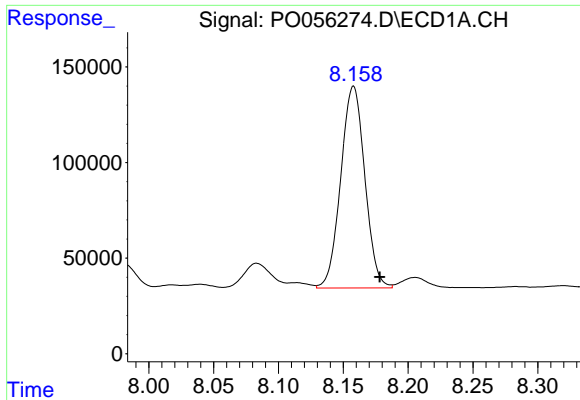
#35 AR-1260-5
 R.T.: 7.163 min
 Delta R.T.: -0.018 min
 Response: 1441617
 Conc: 287.04 ng/ml



#36 AR-1262-1
 R.T.: 7.624 min
 Delta R.T.: -0.020 min
 Response: 706929
 Conc: 220.51 ng/ml



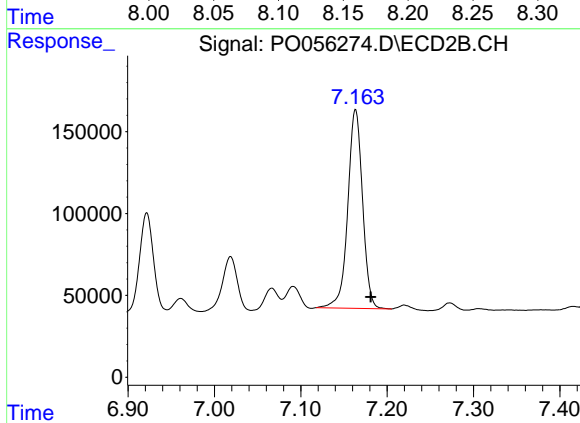
#36 AR-1262-1
 R.T.: 6.663 min
 Delta R.T.: -0.019 min
 Response: 740027
 Conc: 180.46 ng/ml



#37 AR-1262-2

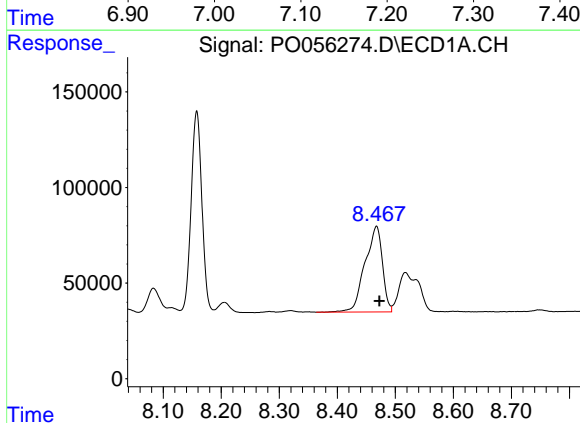
R.T.: 8.158 min
 Delta R.T.: -0.020 min
 Response: 1365560
 Conc: 254.36 ng/ml

Instrument :
 ECD_O
 ClientSampleId :
 P026-SS014-0612-01DL



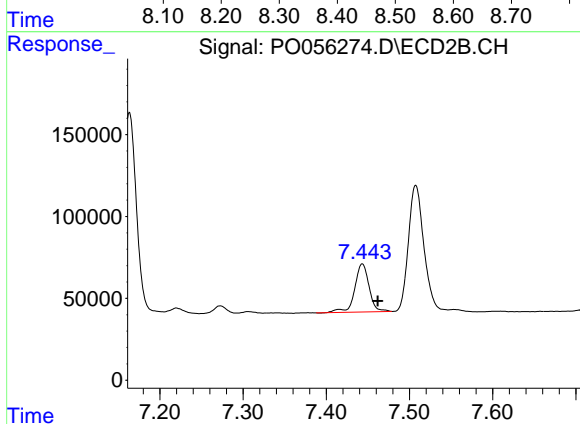
#37 AR-1262-2

R.T.: 7.163 min
 Delta R.T.: -0.018 min
 Response: 1441617
 Conc: 230.55 ng/ml



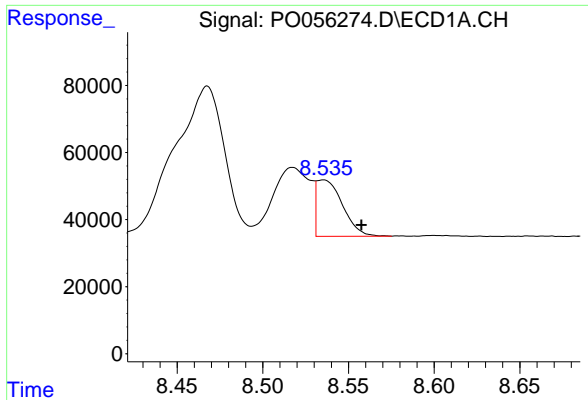
#38 AR-1262-3

R.T.: 8.468 min
 Delta R.T.: -0.005 min
 Response: 932292
 Conc: 256.91 ng/ml



#38 AR-1262-3

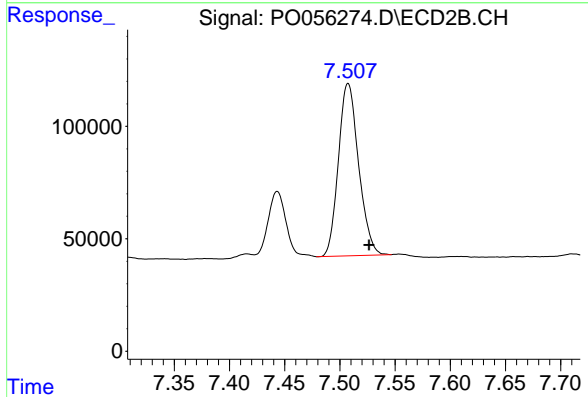
R.T.: 7.443 min
 Delta R.T.: -0.019 min
 Response: 351563
 Conc: 142.74 ng/ml



#39 AR-1262-4

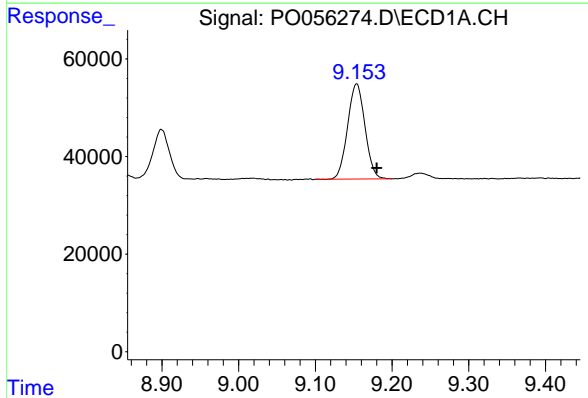
R.T.: 8.535 min
 Delta R.T.: -0.022 min
 Response: 176981
 Conc: 65.18 ng/ml

Instrument :
 ECD_O
 ClientSampleId :
 P026-SS014-0612-01DL



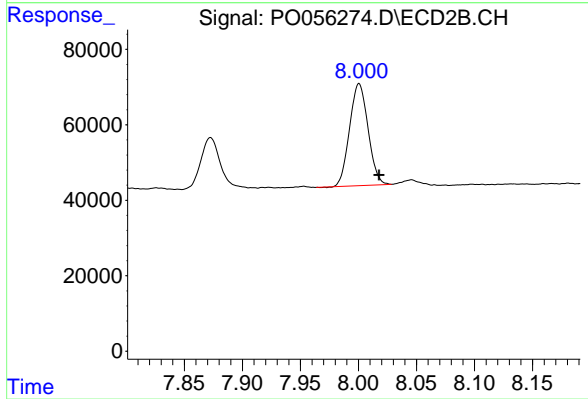
#39 AR-1262-4

R.T.: 7.508 min
 Delta R.T.: -0.019 min
 Response: 976345
 Conc: 238.43 ng/ml



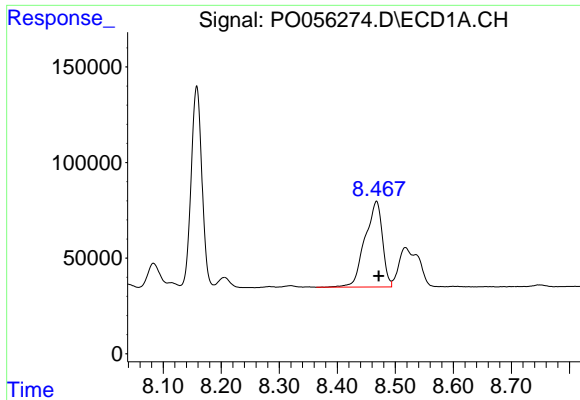
#40 AR-1262-5

R.T.: 9.154 min
 Delta R.T.: -0.026 min
 Response: 309425
 Conc: 171.28 ng/ml



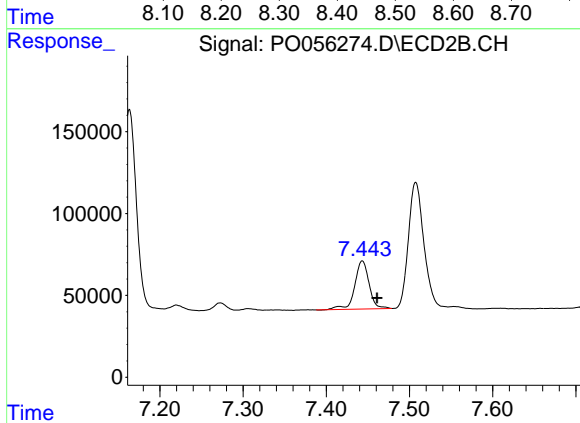
#40 AR-1262-5

R.T.: 8.001 min
 Delta R.T.: -0.017 min
 Response: 298882
 Conc: 175.39 ng/ml

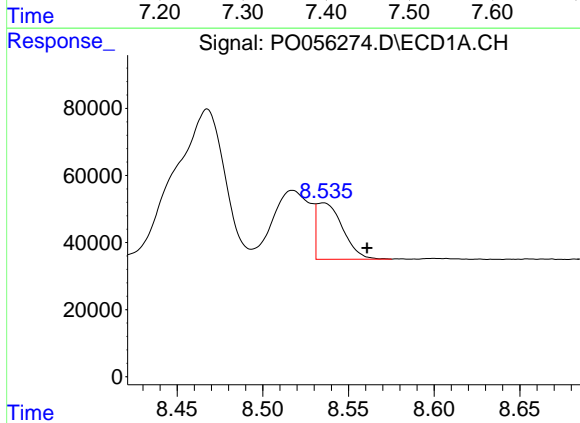


#41 AR-1268-1
 R.T.: 8.468 min
 Delta R.T.: -0.004 min
 Response: 932292
 Conc: 154.38 ng/ml

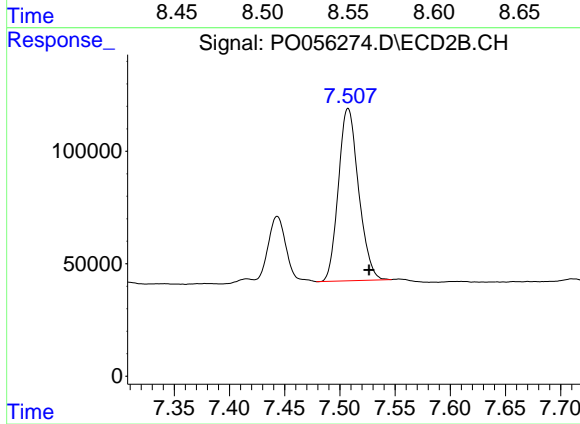
Instrument :
 ECD_O
 ClientSampleId :
 P026-SS014-0612-01DL



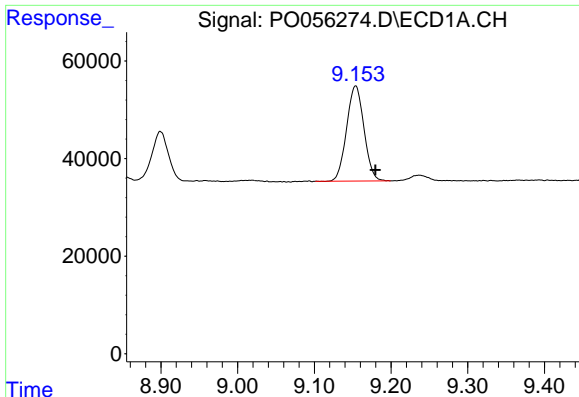
#41 AR-1268-1
 R.T.: 7.443 min
 Delta R.T.: -0.018 min
 Response: 351563
 Conc: 50.74 ng/ml



#42 AR-1268-2
 R.T.: 8.535 min
 Delta R.T.: -0.026 min
 Response: 176981
 Conc: 32.33 ng/ml



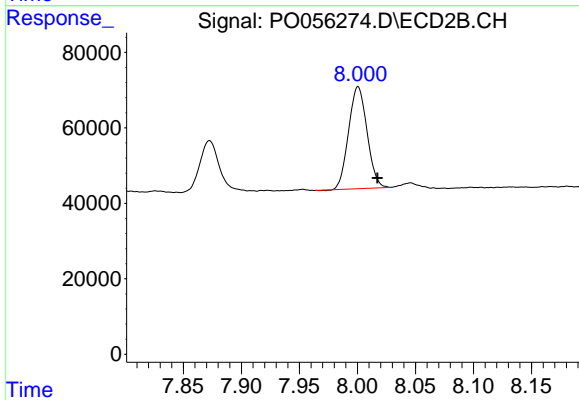
#42 AR-1268-2
 R.T.: 7.508 min
 Delta R.T.: -0.019 min
 Response: 976345
 Conc: 171.61 ng/ml



#44 AR-1268-4

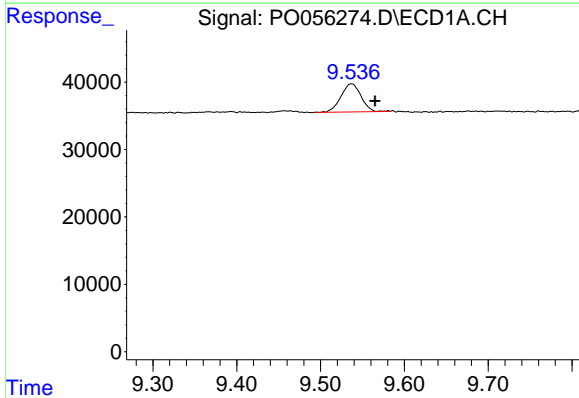
R.T.: 9.154 min
 Delta R.T.: -0.026 min
 Response: 309425
 Conc: 157.69 ng/ml

Instrument :
 ECD_O
 ClientSampleId :
 P026-SS014-0612-01DL



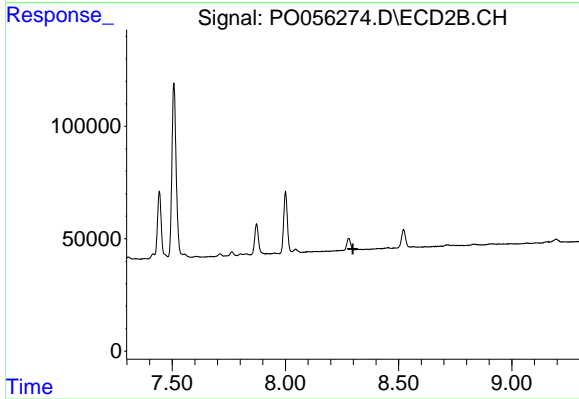
#44 AR-1268-4

R.T.: 8.001 min
 Delta R.T.: -0.017 min
 Response: 298882
 Conc: 158.00 ng/ml



#45 AR-1268-5

R.T.: 9.537 min
 Delta R.T.: -0.028 min
 Response: 69315
 Conc: 5.14 ng/ml



#45 AR-1268-5

R.T.: 0.000 min
 Exp R.T. : 8.298 min
 Response: 0
 Conc: N.D.