

Data Path : Z:\pestpcbsrv\HPCHEM1\ECD_0\Data\P0051524\
 Data File : P0103781.D
 Signal(s) : Signal #1: ECD1A.ch Signal #2: ECD2B.ch
 Acq On : 15 May 2024 16:14
 Operator : YP/AJ
 Sample : P2403-08
 Misc : AR1262 LOQ 50 PPB
 ALS Vial : 23 Sample Multiplier: 1

Instrument :
 ECD_0
ClientSampleId :
 LOQ-WATER-02-QT2-2024

Manual Integrations
APPROVED

Reviewed By :Yogesh Patel 05/17/2024
 Supervised By :Ankita Jodhani 05/17/2024

Integration File signal 1: autoint1.e
 Integration File signal 2: autoint2.e
 Quant Time: May 16 01:43:08 2024
 Quant Method : Z:\pestpcbsrv\HPCHEM1\ECD_0\methods\P0050624.M
 Quant Title : GC EXTRACTABLES
 QLast Update : Tue May 07 04:55:35 2024
 Response via : Initial Calibration
 Integrator: ChemStation

Volume Inj. : 2 µl
 Signal #1 Phase : ZB-MR1 Signal #2 Phase: ZB-MR2
 Signal #1 Info : 30Mx0.32mmx 0.50µ Signal #2 Info : 30M x 0.32mm x 0.25µm

Compound	RT#1	RT#2	Resp#1	Resp#2	ng/ml	ng/ml

System Monitoring Compounds						
1) SA Tetrachlo...	4.450	3.584	173.2E6	58326425	22.501	23.153
2) SA Decachlor...	10.209	8.541	120.3E6	29958192	25.386	23.029
Target Compounds						
36) L8 AR-1262-1	7.755	6.639	12182771	4043309	52.910	52.734
37) L8 AR-1262-2	8.382	6.936	34772554	6375840	53.564	54.105
38) L8 AR-1262-3	8.698	7.458	22361833	4782318	52.162m	52.929
39) L8 AR-1262-4	8.787	7.521	18216731	9070978	54.210	54.297
40) L8 AR-1262-5	9.448	8.011	12286127	3904632	51.810	54.122

(f)=RT Delta > 1/2 Window (#)=Amounts differ by > 25% (m)=manual int.

Data Path : Z:\pestpcbsrv\HPCHEM1\ECD_0\Data\P0051524\
 Data File : P0103781.D
 Signal(s) : Signal #1: ECD1A.ch Signal #2: ECD2B.ch
 Acq On : 15 May 2024 16:14
 Operator : YP/AJ
 Sample : P2403-08
 Misc : AR1262 LOQ 50 PPB
 ALS Vial : 23 Sample Multiplier: 1

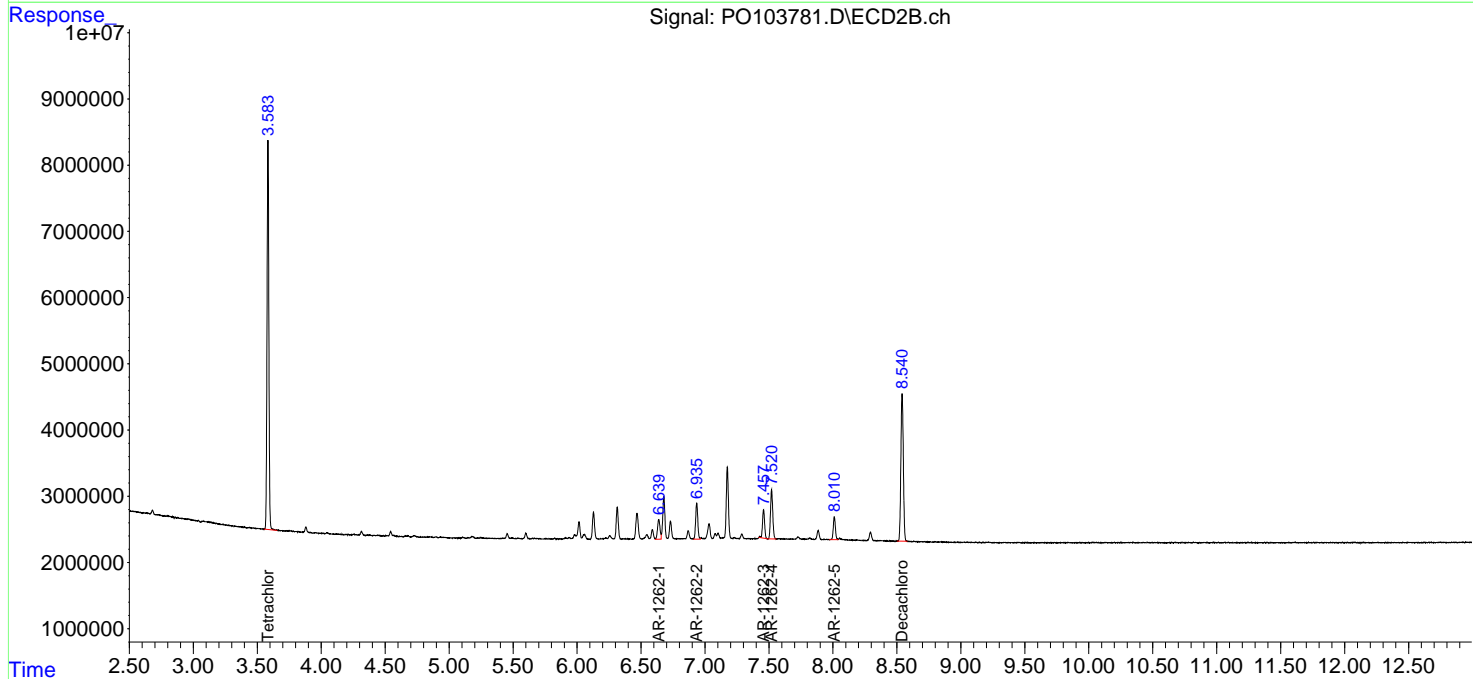
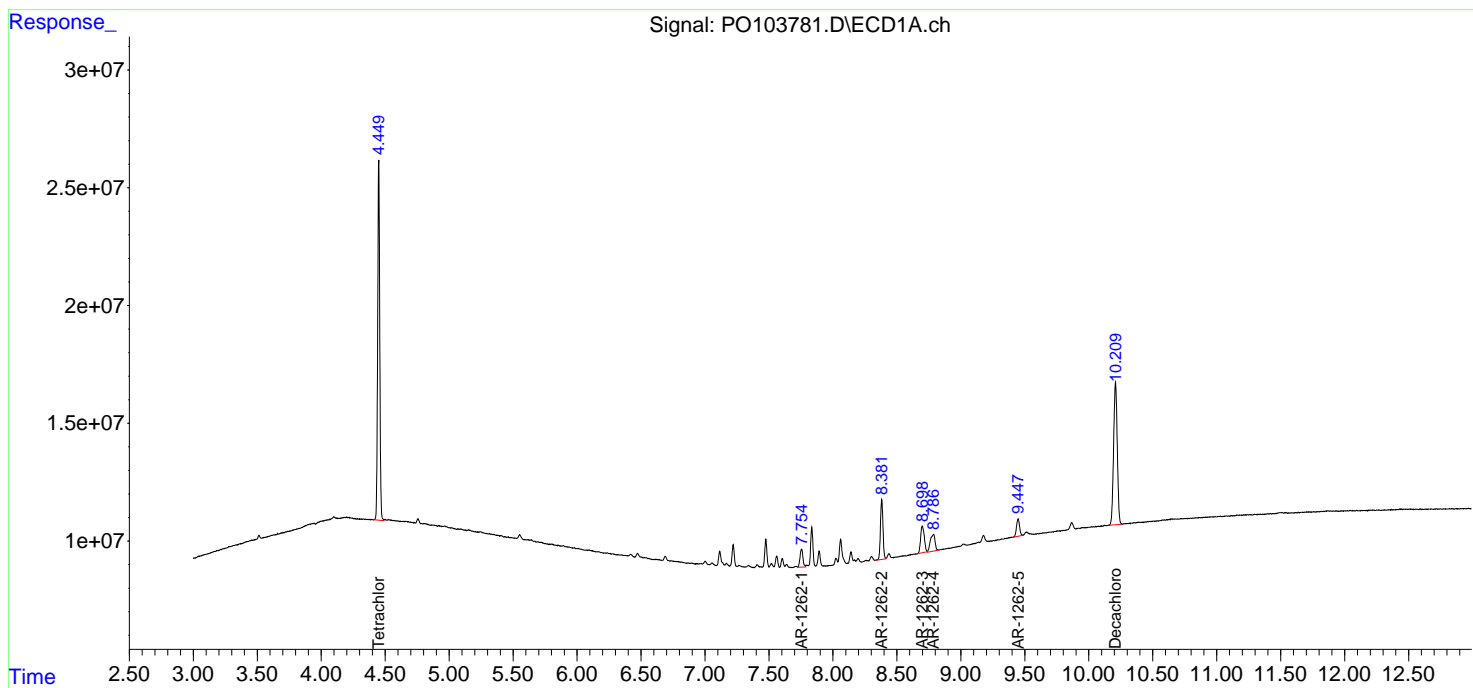
Instrument :
 ECD_0
ClientSampleId :
 LOQ-WATER-02-QT2-2024

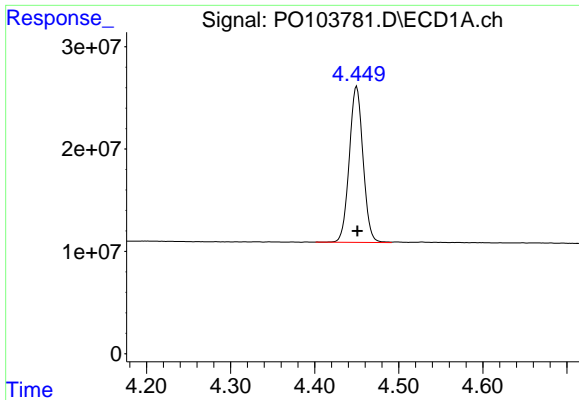
Manual Integrations
APPROVED

Reviewed By :Yogesh Patel 05/17/2024
 Supervised By :Ankita Jodhani 05/17/2024

Integration File signal 1: autoint1.e
 Integration File signal 2: autoint2.e
 Quant Time: May 16 01:43:08 2024
 Quant Method : Z:\pestpcbsrv\HPCHEM1\ECD_0\methods\P0050624.M
 Quant Title : GC EXTRACTABLES
 QLast Update : Tue May 07 04:55:35 2024
 Response via : Initial Calibration
 Integrator: ChemStation

Volume Inj. : 2 µl
 Signal #1 Phase : ZB-MR1 Signal #2 Phase: ZB-MR2
 Signal #1 Info : 30Mx0.32mmx 0.50µ Signal #2 Info : 30M x 0.32mm x 0.25µm



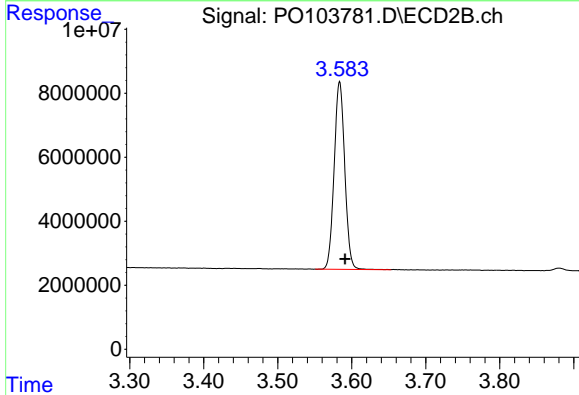


#1 Tetrachloro-m-xylene
 R.T.: 4.450 min
 Delta R.T.: -0.001 min
 Response: 173158976
 Conc: 22.50 ng/ml

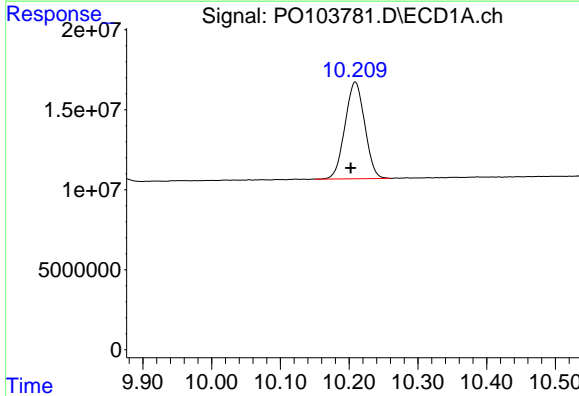
Instrument :
 ECD_O
 ClientSampleId :
 LOQ-WATER-02-QT2-2024

Manual Integrations
 APPROVED

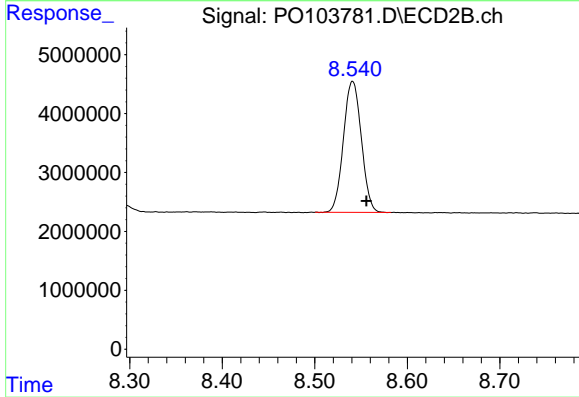
Reviewed By :Yogesh Patel 05/17/2024
 Supervised By :Ankita Jodhani 05/17/2024



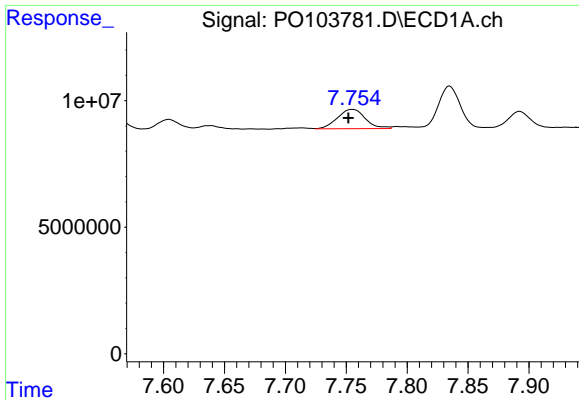
#1 Tetrachloro-m-xylene
 R.T.: 3.584 min
 Delta R.T.: -0.007 min
 Response: 58326425
 Conc: 23.15 ng/ml



#2 Decachlorobiphenyl
 R.T.: 10.209 min
 Delta R.T.: 0.007 min
 Response: 120337593
 Conc: 25.39 ng/ml



#2 Decachlorobiphenyl
 R.T.: 8.541 min
 Delta R.T.: -0.015 min
 Response: 29958192
 Conc: 23.03 ng/ml



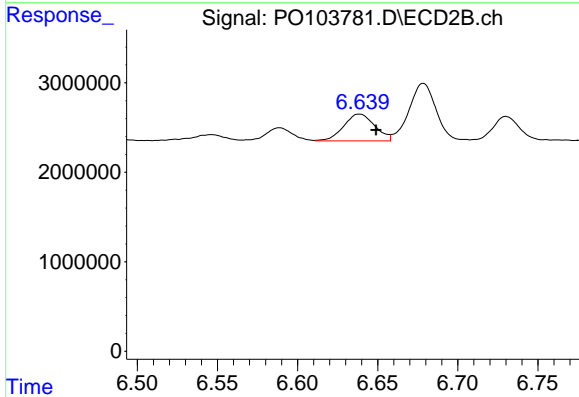
#36 AR-1262-1

R.T.: 7.755 min
 Delta R.T.: 0.003 min
 Response: 12182771
 Conc: 52.91 ng/ml

Instrument :
 ECD_O
 ClientSampleId :
 LOQ-WATER-02-QT2-2024

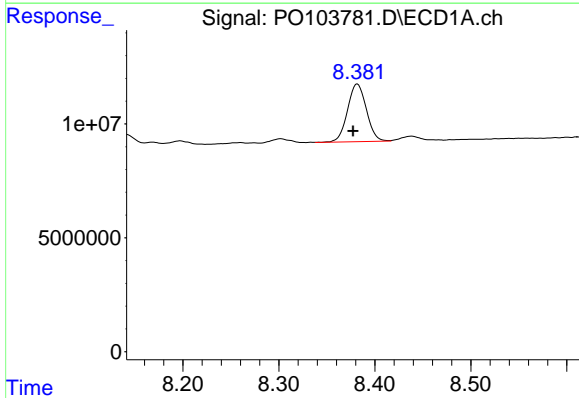
Manual Integrations
 APPROVED

Reviewed By :Yogesh Patel 05/17/2024
 Supervised By :Ankita Jodhani 05/17/2024



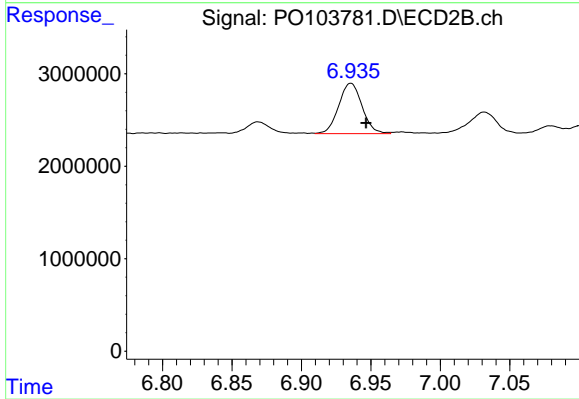
#36 AR-1262-1

R.T.: 6.639 min
 Delta R.T.: -0.010 min
 Response: 4043309
 Conc: 52.73 ng/ml



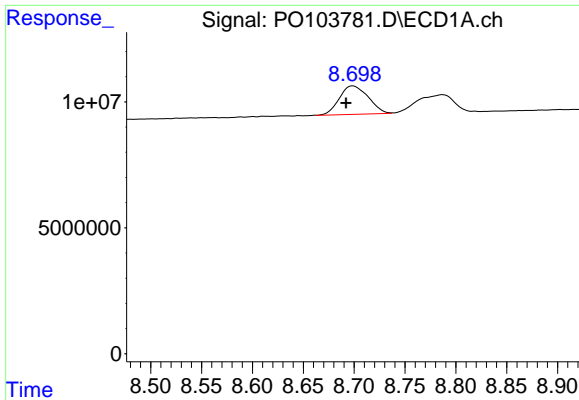
#37 AR-1262-2

R.T.: 8.382 min
 Delta R.T.: 0.005 min
 Response: 34772554
 Conc: 53.56 ng/ml



#37 AR-1262-2

R.T.: 6.936 min
 Delta R.T.: -0.011 min
 Response: 6375840
 Conc: 54.10 ng/ml



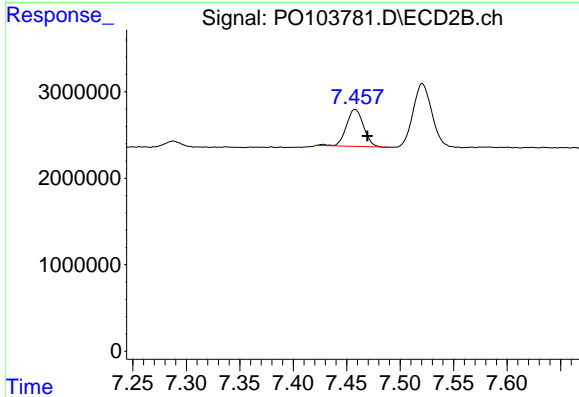
#38 AR-1262-3

R.T.: 8.698 min
 Delta R.T.: 0.006 min
 Response: 22361833
 Conc: 52.16 ng/ml

Instrument :
 ECD_O
 ClientSampleId :
 LOQ-WATER-02-QT2-2024

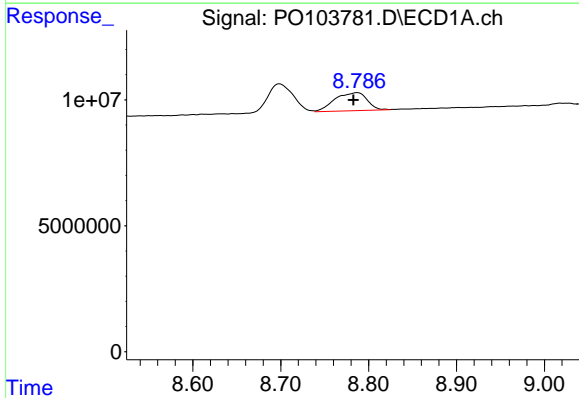
Manual Integrations
 APPROVED

Reviewed By :Yogesh Patel 05/17/2024
 Supervised By :Ankita Jodhani 05/17/2024



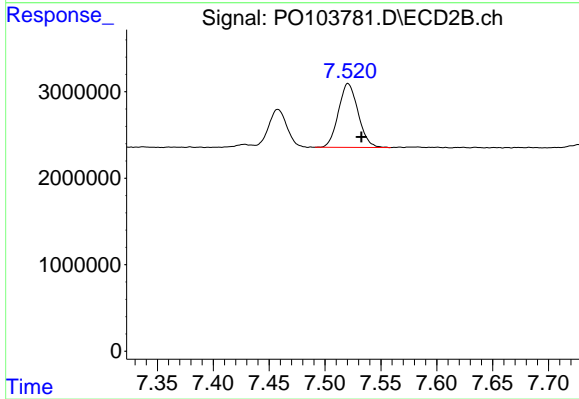
#38 AR-1262-3

R.T.: 7.458 min
 Delta R.T.: -0.012 min
 Response: 4782318
 Conc: 52.93 ng/ml



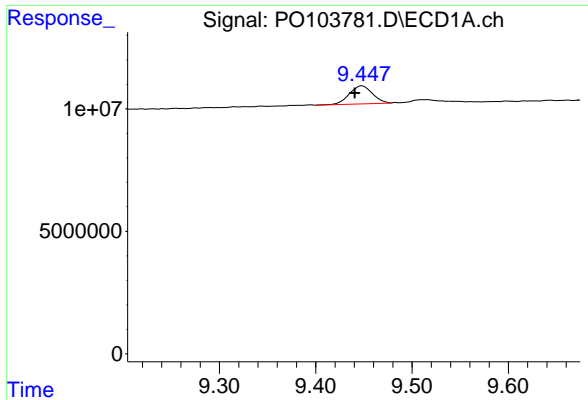
#39 AR-1262-4

R.T.: 8.787 min
 Delta R.T.: 0.004 min
 Response: 18216731
 Conc: 54.21 ng/ml



#39 AR-1262-4

R.T.: 7.521 min
 Delta R.T.: -0.012 min
 Response: 9070978
 Conc: 54.30 ng/ml



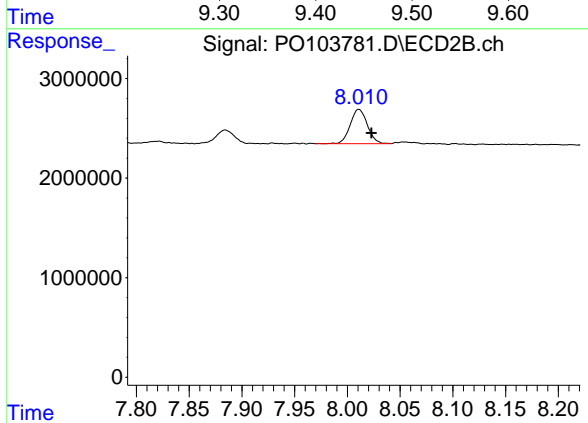
#40 AR-1262-5

R.T.: 9.448 min
 Delta R.T.: 0.007 min
 Response: 12286127
 Conc: 51.81 ng/ml

Instrument :
 ECD_O
 ClientSampleId :
 LOQ-WATER-02-QT2-2024

Manual Integrations
 APPROVED

Reviewed By :Yogesh Patel 05/17/2024
 Supervised By :Ankita Jodhani 05/17/2024



#40 AR-1262-5

R.T.: 8.011 min
 Delta R.T.: -0.012 min
 Response: 3904632
 Conc: 54.12 ng/ml