

Data Path : Z:\pestpcbsrv\HPCHEM1\ECD_0\Data\P0051622\
 Data File : P0086060.D
 Signal(s) : Signal #1: ECD1A.CH Signal #2: ECD2B.CH
 Acq On : 16 May 2022 13:10
 Operator : YP\AJ
 Sample : N2832-03
 Misc :
 ALS Vial : 8 Sample Multiplier: 1

Instrument :
 ECD_0
 ClientSampleId :
 SB21

Integration File signal 1: autoint1.e
 Integration File signal 2: autoint2.e
 Quant Time: May 17 01:55:07 2022
 Quant Method : Z:\pestpcbsrv\HPCHEM1\ECD_0\methods\P0051122.M
 Quant Title : GC EXTRACTABLES
 QLast Update : Thu May 12 05:35:26 2022
 Response via : Initial Calibration
 Integrator: ChemStation 6890 Scale Mode: Small noise peaks clipped

Volume Inj. : 2 µl
 Signal #1 Phase : ZB-MR1 Signal #2 Phase: ZB-MR2
 Signal #1 Info : 30Mx0.32mmx 0.50µ Signal #2 Info : 30M x 0.32mm x 0.25µm

Compound	RT#1	RT#2	Resp#1	Resp#2	ng/ml	ng/ml
System Monitoring Compounds						
1) SA Tetrachlo...	4.481	3.682	2581884	995865	25.424	22.850
2) SA Decachlor...	10.342	8.749	1313416	704654	24.785	20.761
Target Compounds						
3) L1 AR-1016-1	5.595f	0.000	196748	0	61.563	N.D. #
4) L1 AR-1016-2	5.734f	0.000	6813	0	1.533	N.D. #
5) L1 AR-1016-3	5.734	5.034f	6813	8126	2.485	7.352 #
6) L1 AR-1016-4	5.806f	5.034	17783	8126	8.023	8.815
7) L1 AR-1016-5	6.165	5.232	476349	5500	229.889	4.871 #
8) L2 AR-1221-1	4.691	0.000	73987	0	60.429	N.D. #
9) L2 AR-1221-2	4.791	3.987	40458	8691	44.321	22.552 #
11) L3 AR-1232-1	4.791f	0.000	40458	0	19.763	N.D. #
12) L3 AR-1232-2	5.407	0.000	114749	0	121.844	N.D. #
13) L3 AR-1232-3	5.734f	5.034f	6813	8126	3.876	19.682 #
14) L3 AR-1232-4	5.806f	5.059	17783	329	20.442	0.878 #
15) L3 AR-1232-5	0.000	5.232	0	5500	N.D.	13.132 #
16) L4 AR-1242-1	5.595f	0.000	196748	0	72.378	N.D. #
17) L4 AR-1242-2	5.734f	0.000	6813	0	1.812	N.D. #
18) L4 AR-1242-3	5.734	5.034f	6813	8126	2.900	8.642 #
19) L4 AR-1242-4	5.806f	5.059	17783	329	9.382	0.349 #
20) L4 AR-1242-5	6.567	5.565f	140255	53556	76.620	47.093 #
21) L5 AR-1248-1	5.595f	0.000	196748	0	97.407	N.D. #
22) L5 AR-1248-2	0.000	5.034	0	8126	N.D.	6.110 #
23) L5 AR-1248-3	6.165	5.059	476349	329	160.546	0.239 #
24) L5 AR-1248-4	6.567	5.232	140255	5500	43.570	3.435 #
25) L5 AR-1248-5	6.567	0.000	140255	0	45.065	N.D. #
26) L6 AR-1254-1	6.521	5.565	32252	53556	9.583	21.263 #
27) L6 AR-1254-2	0.000	5.803f	0	54125	N.D.	24.716 #
28) L6 AR-1254-3	7.119	0.000	10327	0	2.044	N.D. #
29) L6 AR-1254-4	7.353f	0.000	5143	0	1.381	N.D. #
30) L6 AR-1254-5	7.846	6.800	296561	44390	76.110	15.007 #
31) L7 AR-1260-1	0.000	6.304	0	5383	N.D.	2.766 #
32) L7 AR-1260-2	7.541	6.507	737922	10005	203.987	4.257 #
33) L7 AR-1260-3	7.846f	0.000	296561	0	107.450	N.D. #
34) L7 AR-1260-4	8.104	0.000	298023	0	88.330	N.D. #
35) L7 AR-1260-5	8.410f	7.319	75079	5595	12.167	1.292 #
36) L8 AR-1262-1	7.846f	6.800f	296561	44390	65.572	14.691 #
37) L8 AR-1262-2	8.410f	7.319	75079	5595	9.592	1.019 #
38) L8 AR-1262-3	0.000	7.685f	0	6255	N.D.	2.967 #
39) L8 AR-1262-4	0.000	7.685	0	6255	N.D.	1.578 #
41) L9 AR-1268-1	0.000	7.685f	0	6255	N.D.	1.025 #
42) L9 AR-1268-2	0.000	7.685	0	6255	N.D.	1.139 #

Data Path : Z:\pestpcbsrv\HPCHEM1\ECD_0\Data\P0051622\
Data File : P0086060.D
Signal(s) : Signal #1: ECD1A.CH Signal #2: ECD2B.CH
Acq On : 16 May 2022 13:10
Operator : YP\AJ
Sample : N2832-03
Misc :
ALS Vial : 8 Sample Multiplier: 1

Instrument :
ECD_0
ClientSampleId :
SB21

Integration File signal 1: autoint1.e
Integration File signal 2: autoint2.e
Quant Time: May 17 01:55:07 2022
Quant Method : Z:\pestpcbsrv\HPCHEM1\ECD_0\methods\P0051122.M
Quant Title : GC EXTRACTABLES
QLast Update : Thu May 12 05:35:26 2022
Response via : Initial Calibration
Integrator: ChemStation 6890 Scale Mode: Small noise peaks clipped

Volume Inj. : 2 µl
Signal #1 Phase : ZB-MR1 Signal #2 Phase: ZB-MR2
Signal #1 Info : 30Mx0.32mmx 0.50µ Signal #2 Info : 30M x 0.32mm x 0.25µm

Compound	RT#1	RT#2	Resp#1	Resp#2	ng/ml	ng/ml
----------	------	------	--------	--------	-------	-------

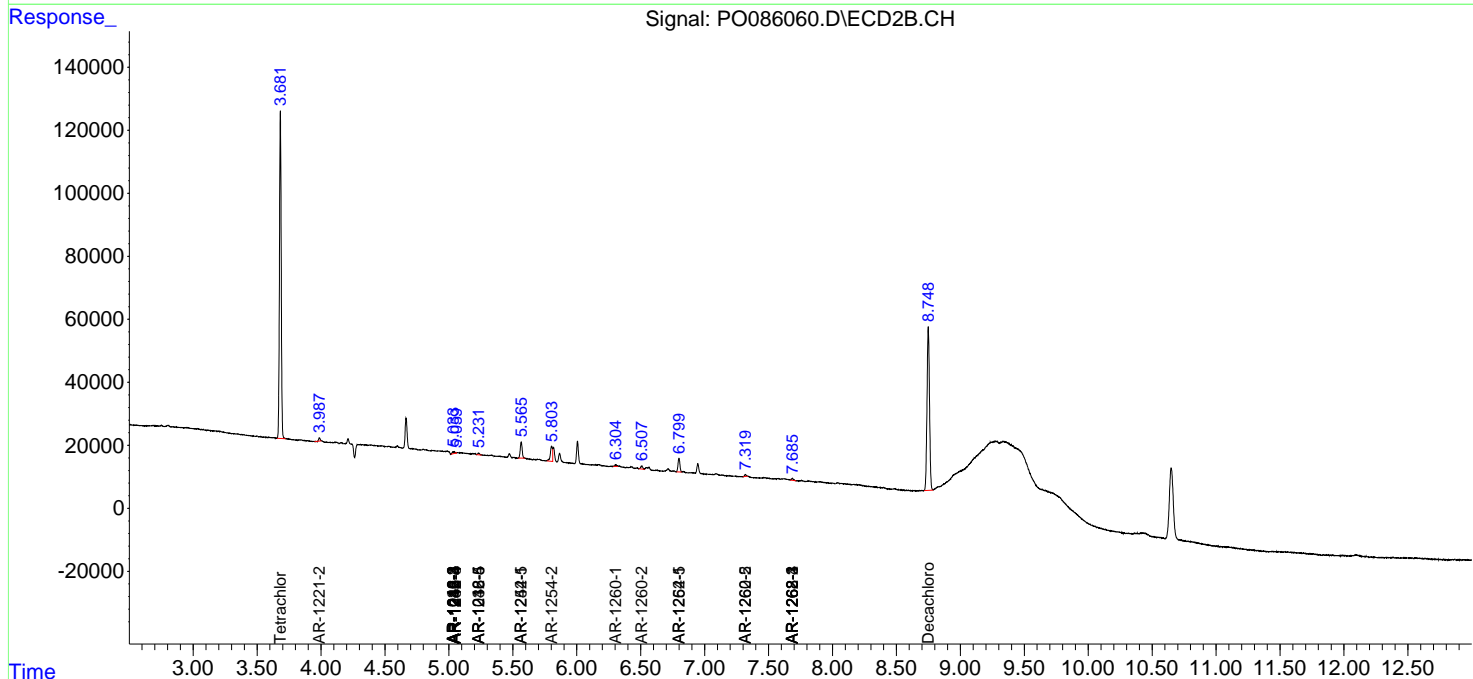
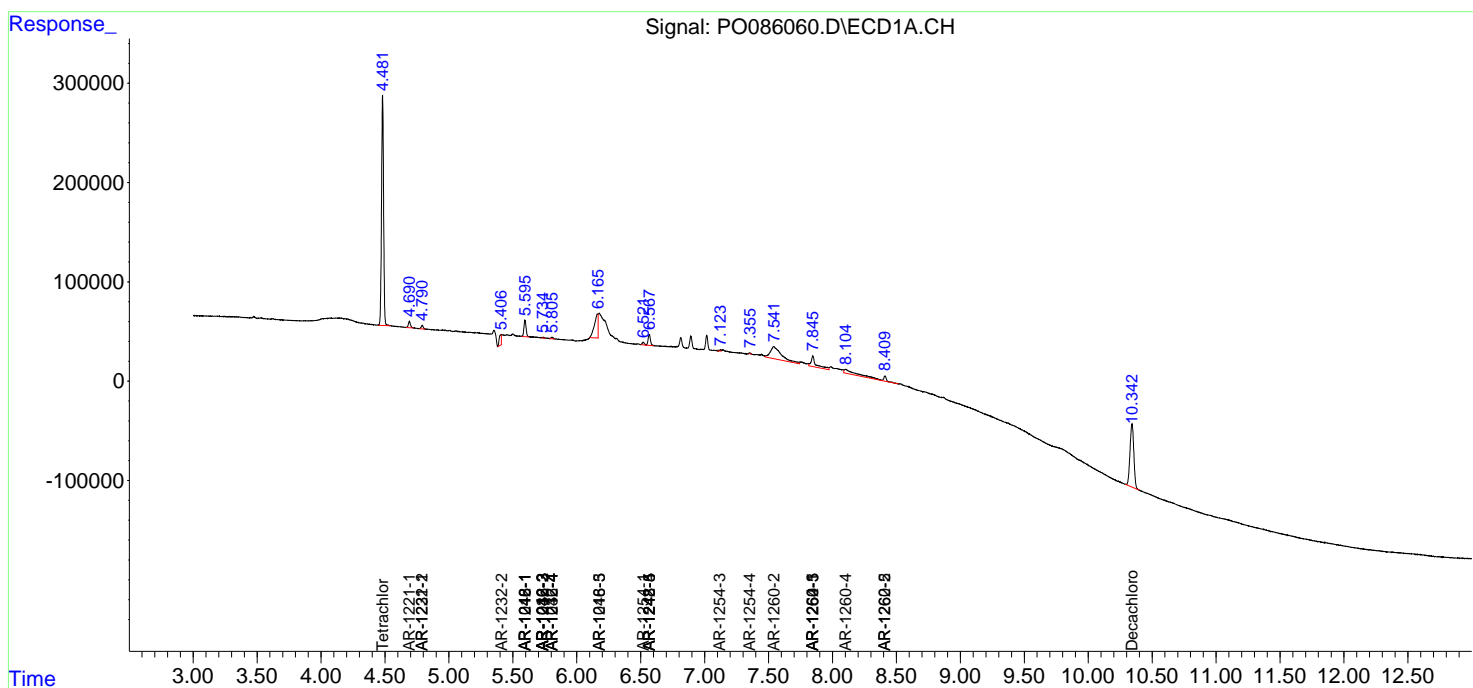
(f)=RT Delta > 1/2 Window (#)=Amounts differ by > 25% (m)=manual int.

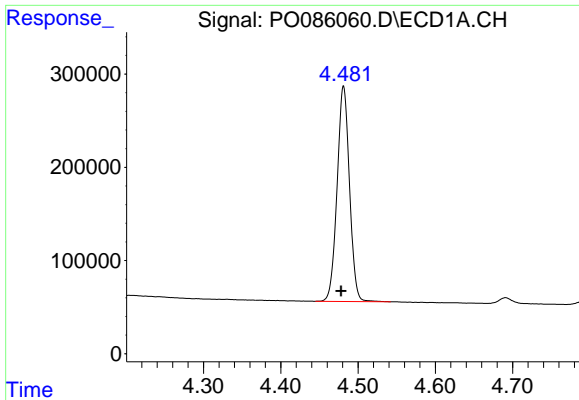
Data Path : Z:\pestpcbsrv\HPCHEM1\ECD_O\Data\P0051622\
 Data File : P0086060.D
 Signal(s) : Signal #1: ECD1A.CH Signal #2: ECD2B.CH
 Acq On : 16 May 2022 13:10
 Operator : YP\AJ
 Sample : N2832-03
 Misc :
 ALS Vial : 8 Sample Multiplier: 1

Instrument :
 ECD_O
 ClientSampleId :
 SB21

Integration File signal 1: autoint1.e
 Integration File signal 2: autoint2.e
 Quant Time: May 17 01:55:07 2022
 Quant Method : Z:\pestpcbsrv\HPCHEM1\ECD_O\methods\P0051122.M
 Quant Title : GC EXTRACTABLES
 QLast Update : Thu May 12 05:35:26 2022
 Response via : Initial Calibration
 Integrator: ChemStation 6890 Scale Mode: Small noise peaks clipped

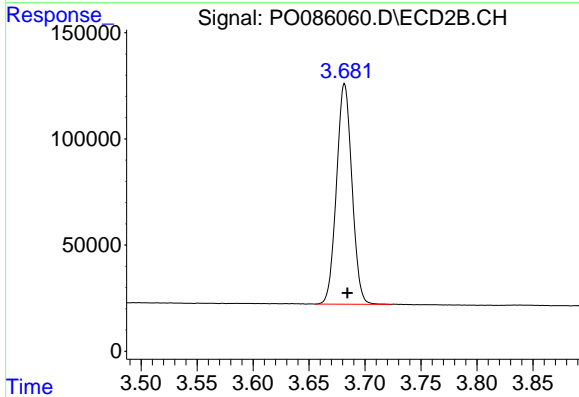
Volume Inj. : 2 µl
 Signal #1 Phase : ZB-MR1 Signal #2 Phase: ZB-MR2
 Signal #1 Info : 30Mx0.32mmx 0.50µ Signal #2 Info : 30M x 0.32mm x 0.25µm



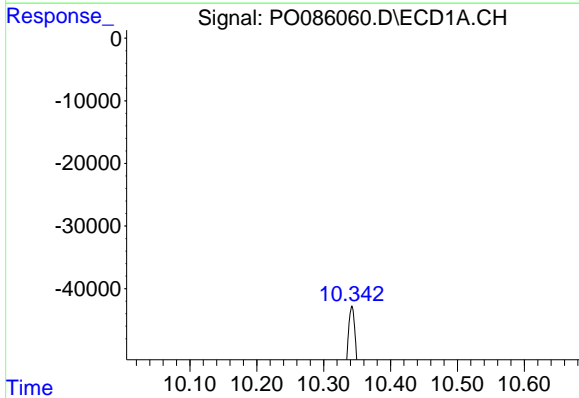


#1 Tetrachloro-m-xylene
 R.T.: 4.481 min
 Delta R.T.: 0.003 min
 Response: 2581884
 Conc: 25.42 ng/ml

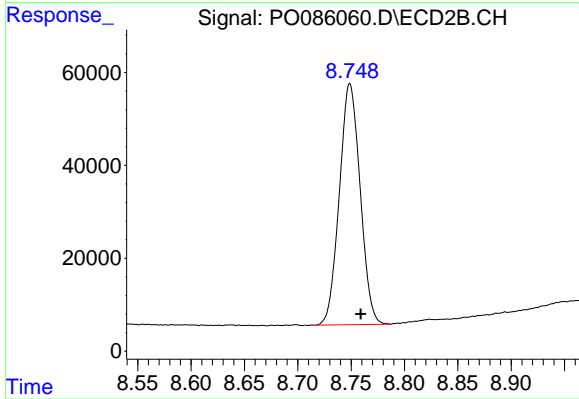
Instrument :
 ECD_O
 ClientSampleId :
 SB21



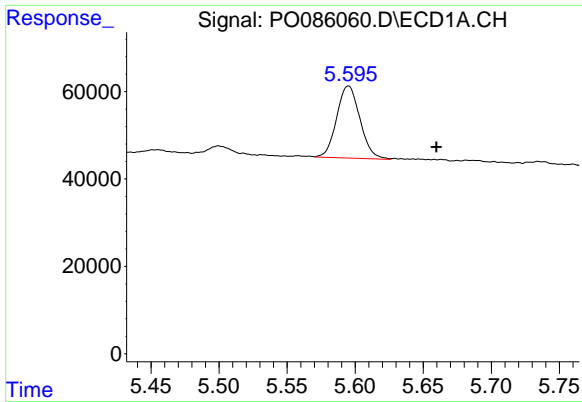
#1 Tetrachloro-m-xylene
 R.T.: 3.682 min
 Delta R.T.: -0.002 min
 Response: 995865
 Conc: 22.85 ng/ml



#2 Decachlorobiphenyl
 R.T.: 10.342 min
 Delta R.T.: 0.015 min
 Response: 1313416
 Conc: 24.78 ng/ml



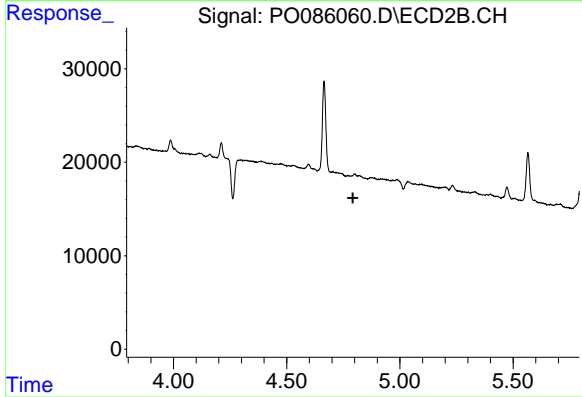
#2 Decachlorobiphenyl
 R.T.: 8.749 min
 Delta R.T.: -0.010 min
 Response: 704654
 Conc: 20.76 ng/ml



#3 AR-1016-1

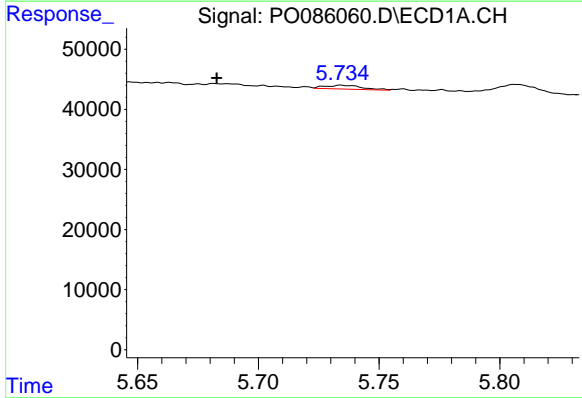
R.T.: 5.595 min
 Delta R.T.: -0.065 min
 Response: 196748
 Conc: 61.56 ng/ml

Instrument :
 ECD_O
 ClientSampleId :
 SB21



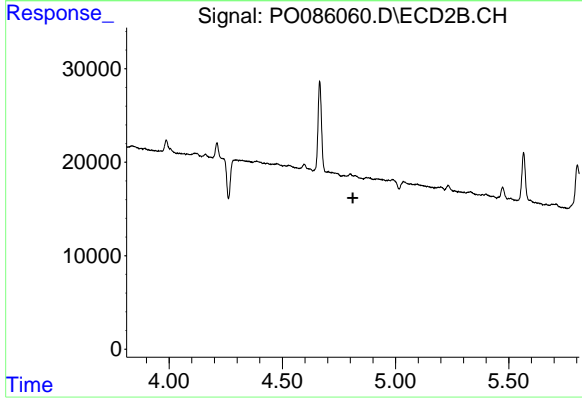
#3 AR-1016-1

R.T.: 0.000 min
 Exp R.T. : 4.792 min
 Response: 0
 Conc: N.D.



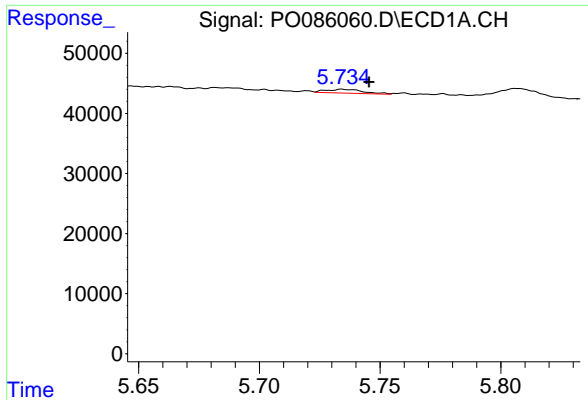
#4 AR-1016-2

R.T.: 5.734 min
 Delta R.T.: 0.051 min
 Response: 6813
 Conc: 1.53 ng/ml



#4 AR-1016-2

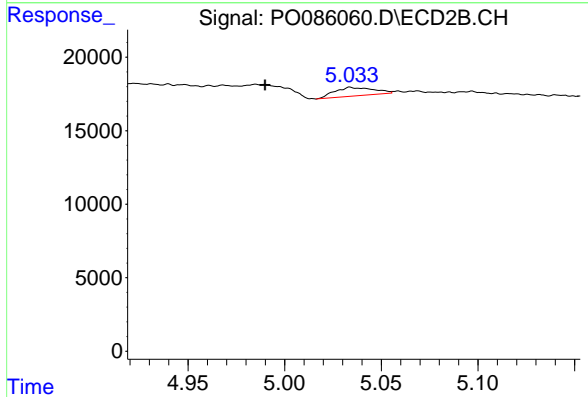
R.T.: 0.000 min
 Exp R.T. : 4.811 min
 Response: 0
 Conc: N.D.



#5 AR-1016-3

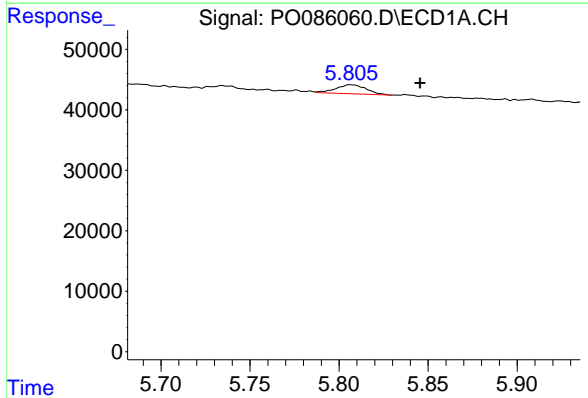
R.T.: 5.734 min
 Delta R.T.: -0.011 min
 Response: 6813
 Conc: 2.48 ng/ml

Instrument :
 ECD_O
 ClientSampleId :
 SB21



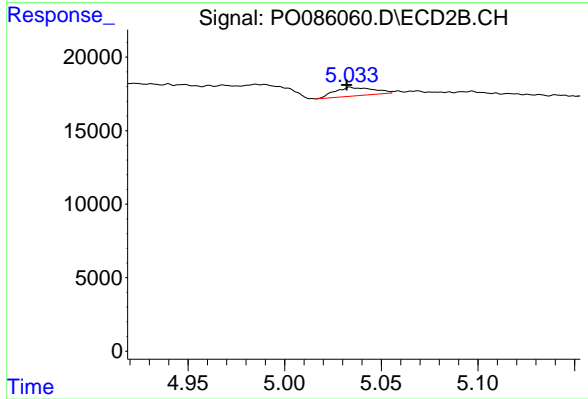
#5 AR-1016-3

R.T.: 5.034 min
 Delta R.T.: 0.044 min
 Response: 8126
 Conc: 7.35 ng/ml



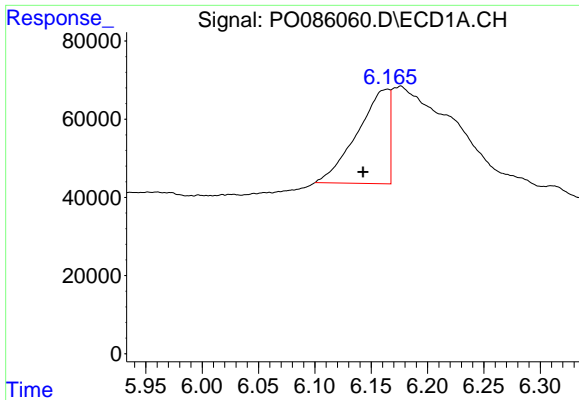
#6 AR-1016-4

R.T.: 5.806 min
 Delta R.T.: -0.039 min
 Response: 17783
 Conc: 8.02 ng/ml



#6 AR-1016-4

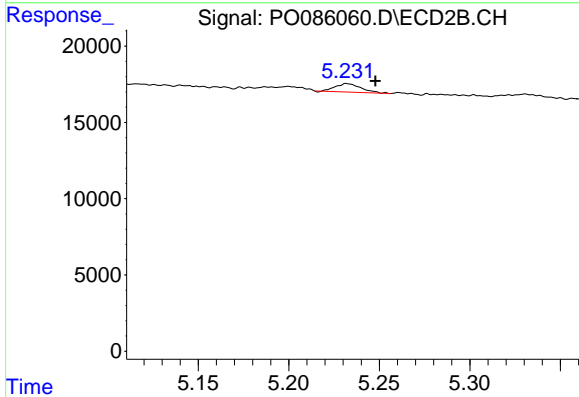
R.T.: 5.034 min
 Delta R.T.: 0.002 min
 Response: 8126
 Conc: 8.82 ng/ml



#7 AR-1016-5

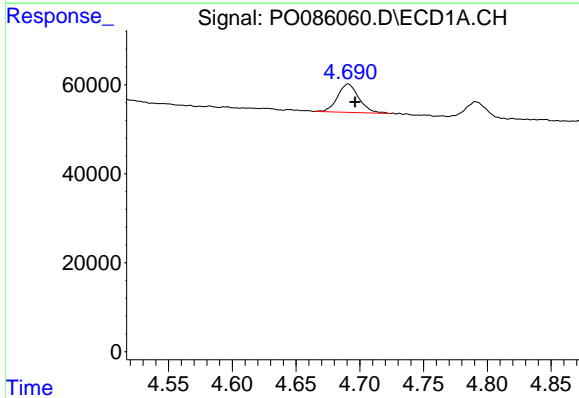
R.T.: 6.165 min
 Delta R.T.: 0.022 min
 Response: 476349
 Conc: 229.89 ng/ml

Instrument :
 ECD_O
 ClientSampleId :
 SB21



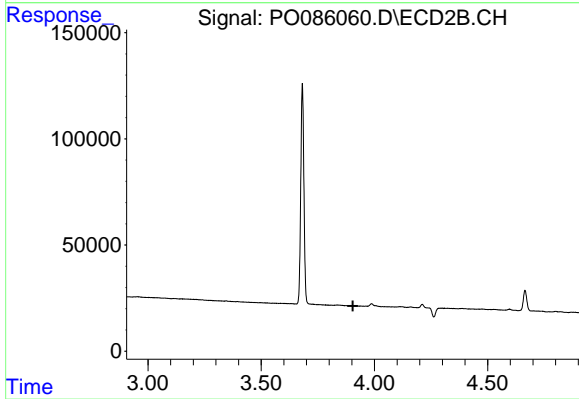
#7 AR-1016-5

R.T.: 5.232 min
 Delta R.T.: -0.016 min
 Response: 5500
 Conc: 4.87 ng/ml



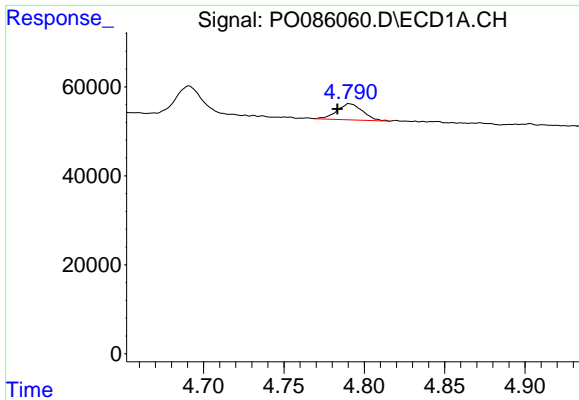
#8 AR-1221-1

R.T.: 4.691 min
 Delta R.T.: -0.005 min
 Response: 73987
 Conc: 60.43 ng/ml



#8 AR-1221-1

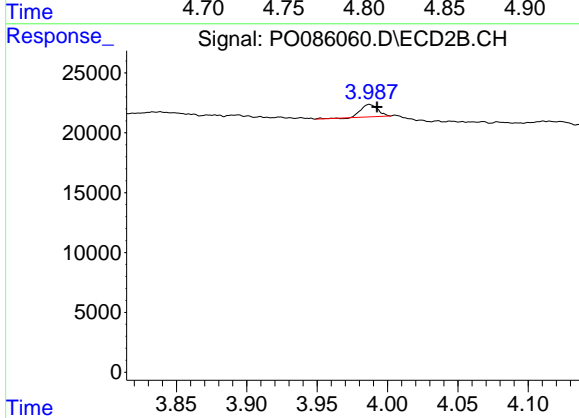
R.T.: 0.000 min
 Exp R.T. : 3.905 min
 Response: 0
 Conc: N.D.



#9 AR-1221-2

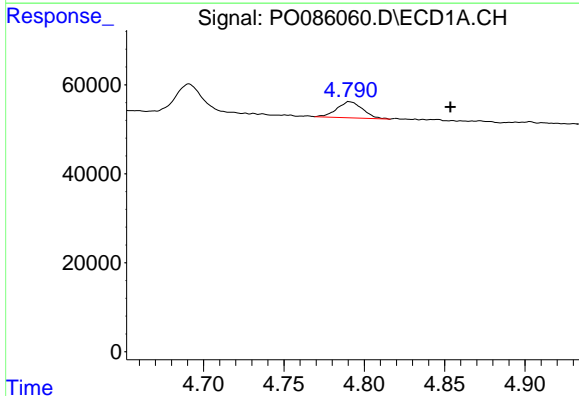
R.T.: 4.791 min
 Delta R.T.: 0.007 min
 Response: 40458
 Conc: 44.32 ng/ml

Instrument :
 ECD_O
 ClientSampleId :
 SB21



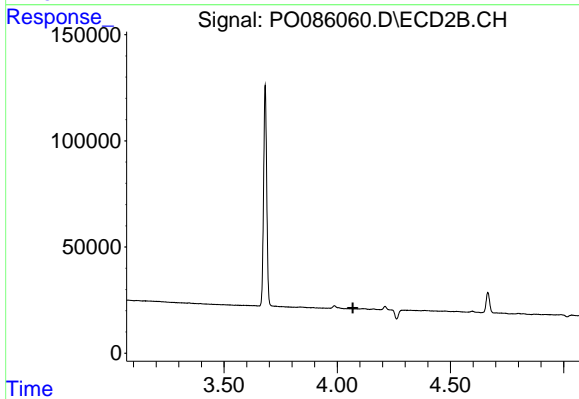
#9 AR-1221-2

R.T.: 3.987 min
 Delta R.T.: -0.005 min
 Response: 8691
 Conc: 22.55 ng/ml



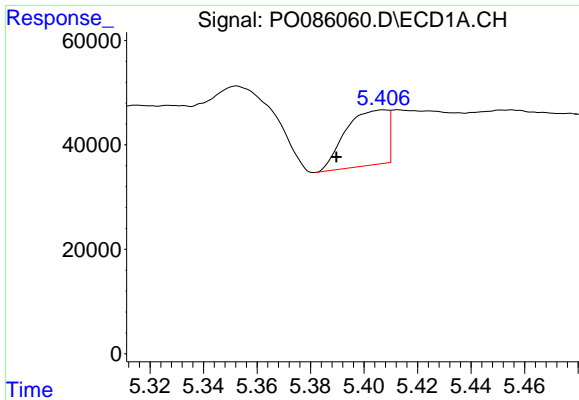
#11 AR-1232-1

R.T.: 4.791 min
 Delta R.T.: -0.063 min
 Response: 40458
 Conc: 19.76 ng/ml



#11 AR-1232-1

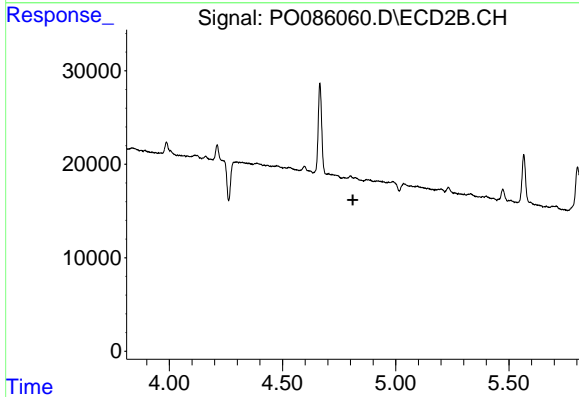
R.T.: 0.000 min
 Exp R.T. : 4.069 min
 Response: 0
 Conc: N.D.



#12 AR-1232-2

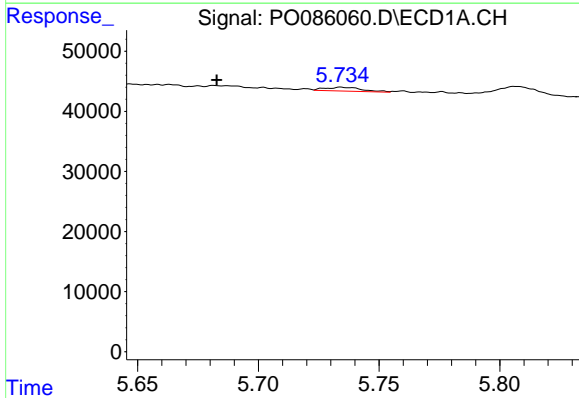
R.T.: 5.407 min
 Delta R.T.: 0.018 min
 Response: 114749
 Conc: 121.84 ng/ml

Instrument :
 ECD_O
 ClientSampleId :
 SB21



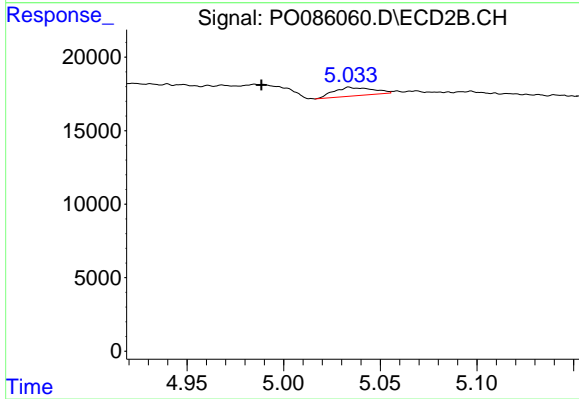
#12 AR-1232-2

R.T.: 0.000 min
 Exp R.T. : 4.811 min
 Response: 0
 Conc: N.D.



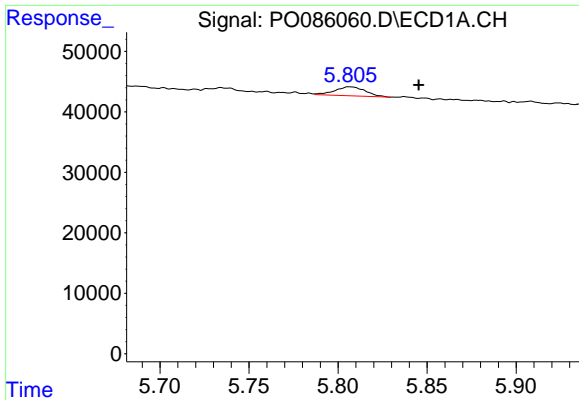
#13 AR-1232-3

R.T.: 5.734 min
 Delta R.T.: 0.051 min
 Response: 6813
 Conc: 3.88 ng/ml



#13 AR-1232-3

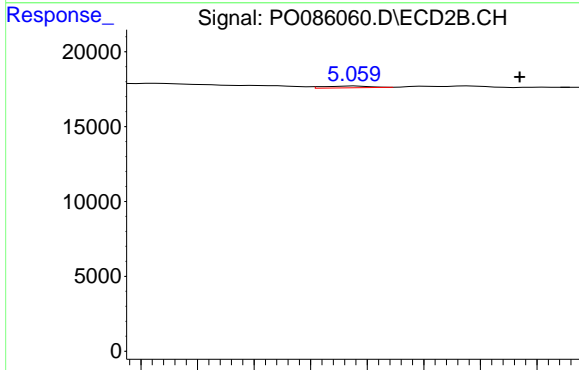
R.T.: 5.034 min
 Delta R.T.: 0.045 min
 Response: 8126
 Conc: 19.68 ng/ml



#14 AR-1232-4

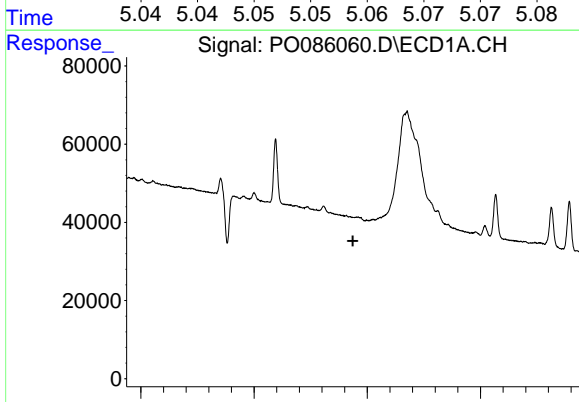
R.T.: 5.806 min
 Delta R.T.: -0.039 min
 Response: 17783
 Conc: 20.44 ng/ml

Instrument :
 ECD_O
 ClientSampleId :
 SB21



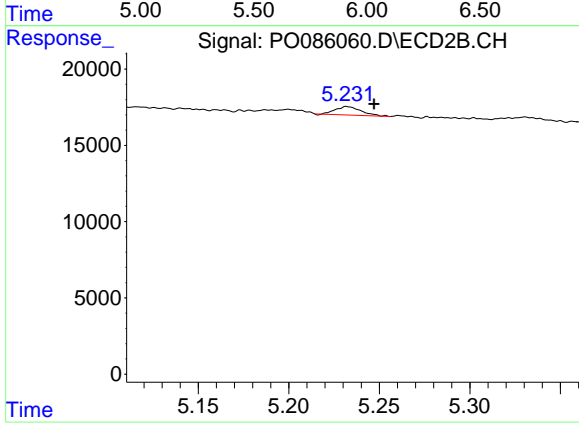
#14 AR-1232-4

R.T.: 5.059 min
 Delta R.T.: -0.015 min
 Response: 329
 Conc: 0.88 ng/ml



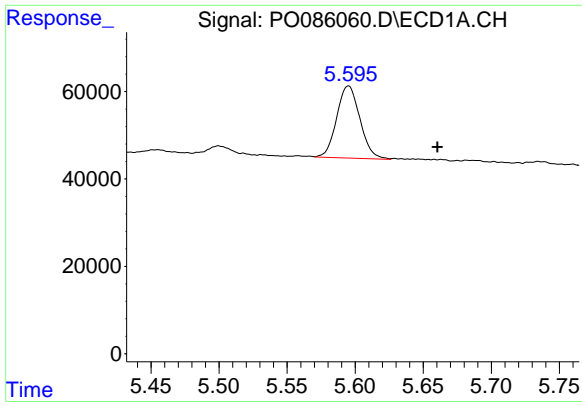
#15 AR-1232-5

R.T.: 0.000 min
 Exp R.T. : 5.937 min
 Response: 0
 Conc: N.D.



#15 AR-1232-5

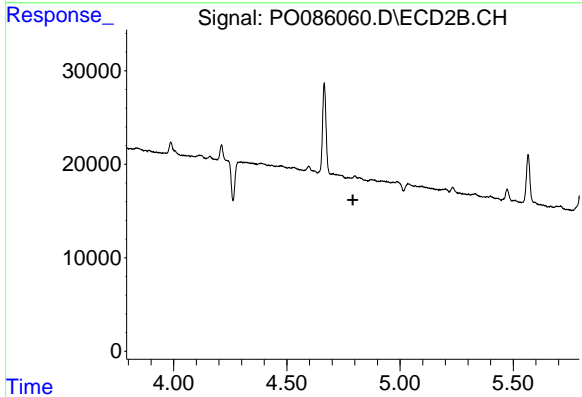
R.T.: 5.232 min
 Delta R.T.: -0.015 min
 Response: 5500
 Conc: 13.13 ng/ml



#16 AR-1242-1

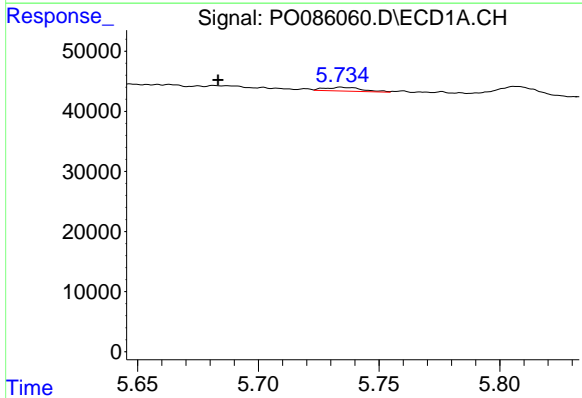
R.T.: 5.595 min
 Delta R.T.: -0.065 min
 Response: 196748
 Conc: 72.38 ng/ml

Instrument :
 ECD_O
 ClientSampleId :
 SB21



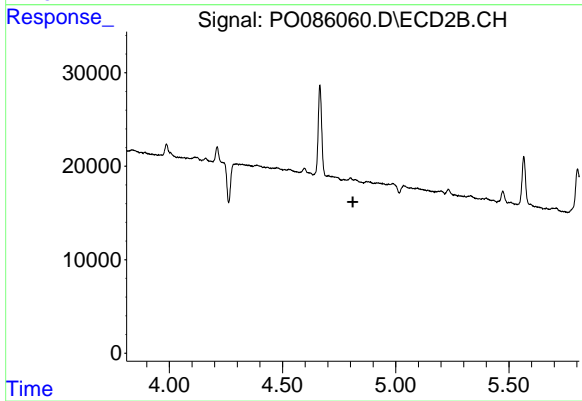
#16 AR-1242-1

R.T.: 0.000 min
 Exp R.T. : 4.792 min
 Response: 0
 Conc: N.D.



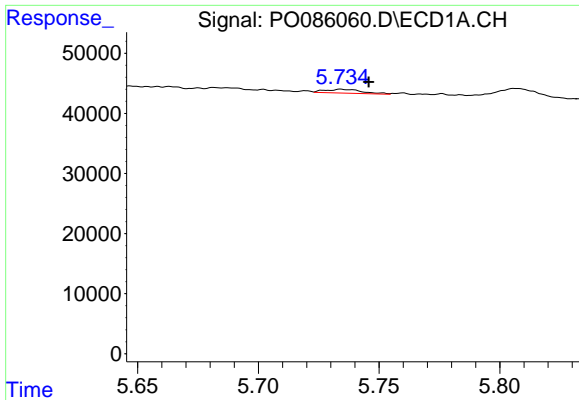
#17 AR-1242-2

R.T.: 5.734 min
 Delta R.T.: 0.051 min
 Response: 6813
 Conc: 1.81 ng/ml



#17 AR-1242-2

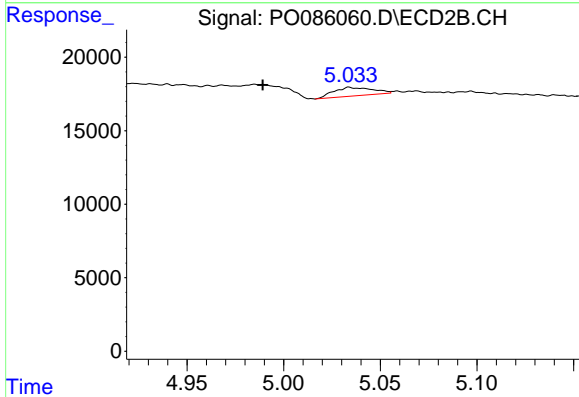
R.T.: 0.000 min
 Exp R.T. : 4.811 min
 Response: 0
 Conc: N.D.



#18 AR-1242-3

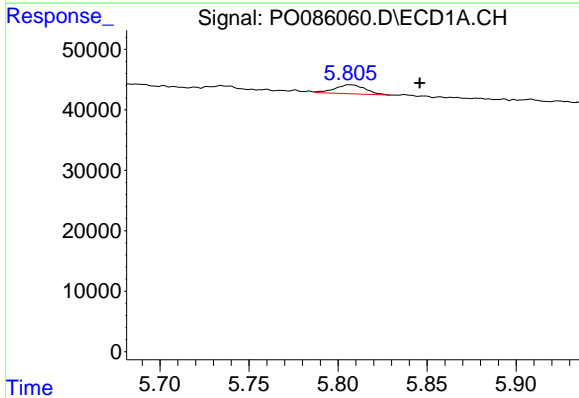
R.T.: 5.734 min
 Delta R.T.: -0.012 min
 Response: 6813
 Conc: 2.90 ng/ml

Instrument :
 ECD_O
 ClientSampleId :
 SB21



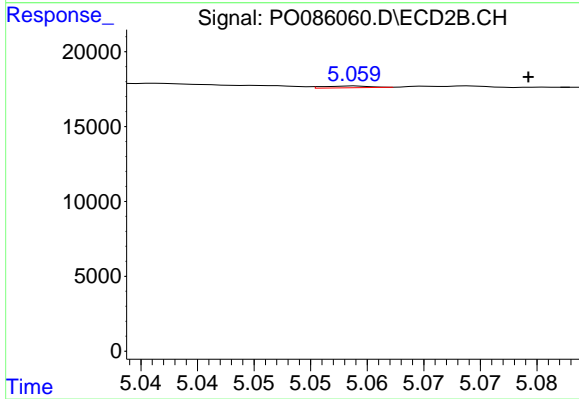
#18 AR-1242-3

R.T.: 5.034 min
 Delta R.T.: 0.045 min
 Response: 8126
 Conc: 8.64 ng/ml



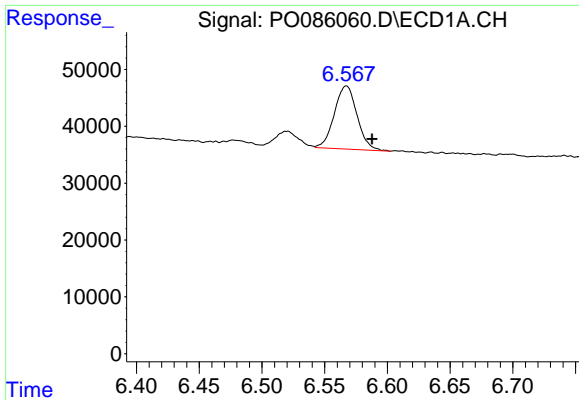
#19 AR-1242-4

R.T.: 5.806 min
 Delta R.T.: -0.040 min
 Response: 17783
 Conc: 9.38 ng/ml



#19 AR-1242-4

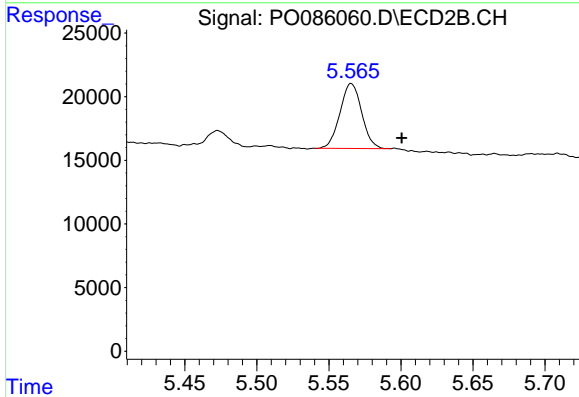
R.T.: 5.059 min
 Delta R.T.: -0.015 min
 Response: 329
 Conc: 0.35 ng/ml



#20 AR-1242-5

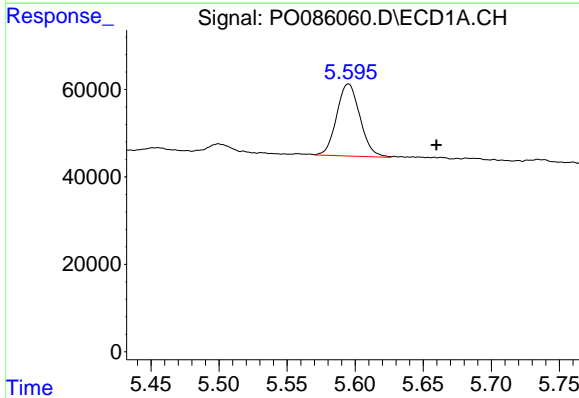
R.T.: 6.567 min
 Delta R.T.: -0.020 min
 Response: 140255
 Conc: 76.62 ng/ml

Instrument :
 ECD_O
 ClientSampleId :
 SB21



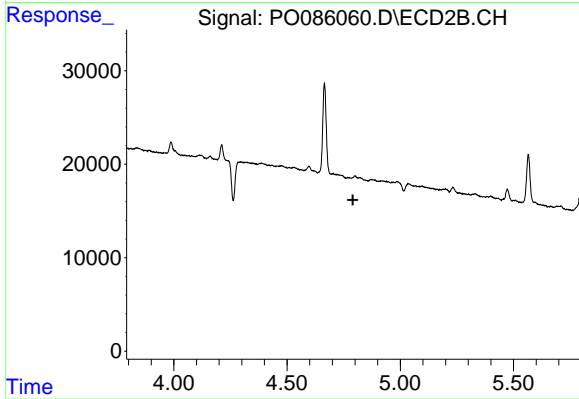
#20 AR-1242-5

R.T.: 5.565 min
 Delta R.T.: -0.035 min
 Response: 53556
 Conc: 47.09 ng/ml



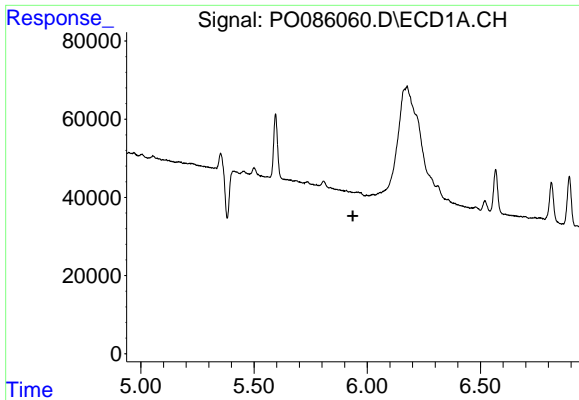
#21 AR-1248-1

R.T.: 5.595 min
 Delta R.T.: -0.065 min
 Response: 196748
 Conc: 97.41 ng/ml



#21 AR-1248-1

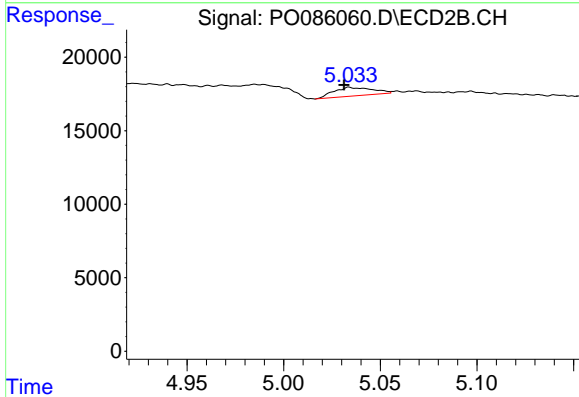
R.T.: 0.000 min
 Exp R.T. : 4.791 min
 Response: 0
 Conc: N.D.



#22 AR-1248-2

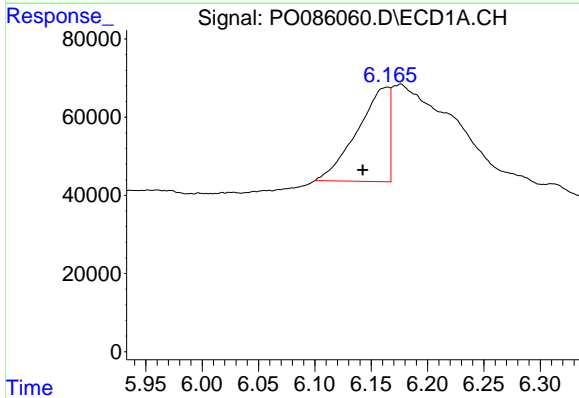
R.T.: 0.000 min
 Exp R.T.: 5.937 min
 Response: 0
 Conc: N.D.

Instrument :
 ECD_O
 ClientSampleId :
 SB21



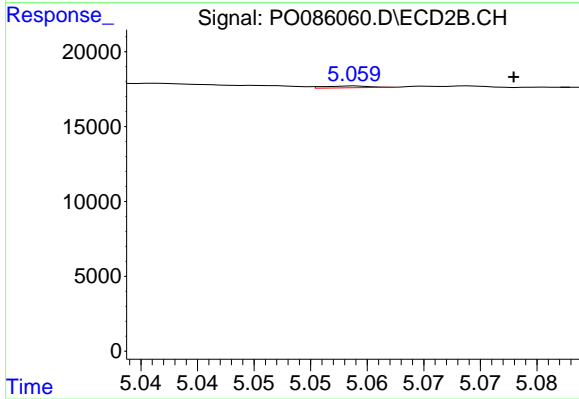
#22 AR-1248-2

R.T.: 5.034 min
 Delta R.T.: 0.003 min
 Response: 8126
 Conc: 6.11 ng/ml



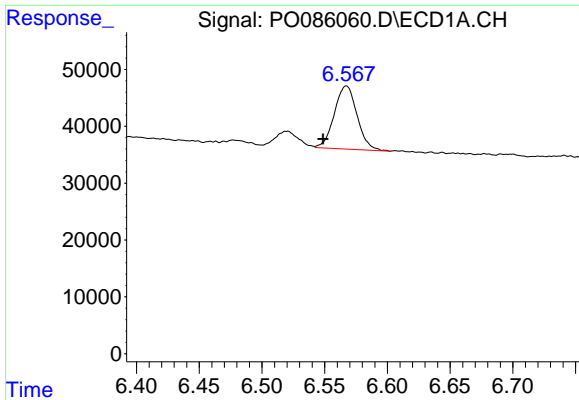
#23 AR-1248-3

R.T.: 6.165 min
 Delta R.T.: 0.022 min
 Response: 476349
 Conc: 160.55 ng/ml



#23 AR-1248-3

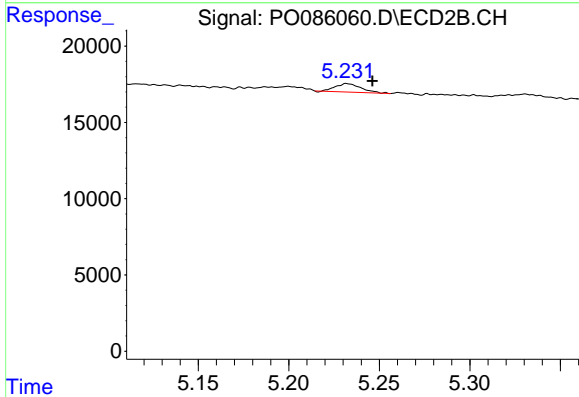
R.T.: 5.059 min
 Delta R.T.: -0.014 min
 Response: 329
 Conc: 0.24 ng/ml



#24 AR-1248-4

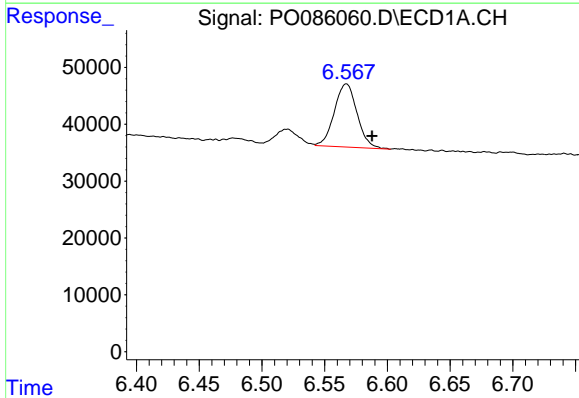
R.T.: 6.567 min
 Delta R.T.: 0.019 min
 Response: 140255
 Conc: 43.57 ng/ml

Instrument :
 ECD_O
 ClientSampleId :
 SB21



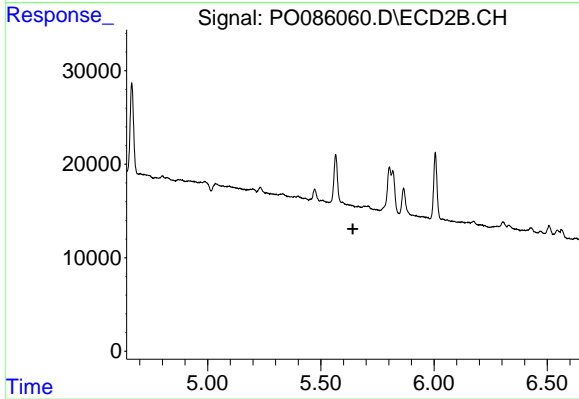
#24 AR-1248-4

R.T.: 5.232 min
 Delta R.T.: -0.014 min
 Response: 5500
 Conc: 3.43 ng/ml



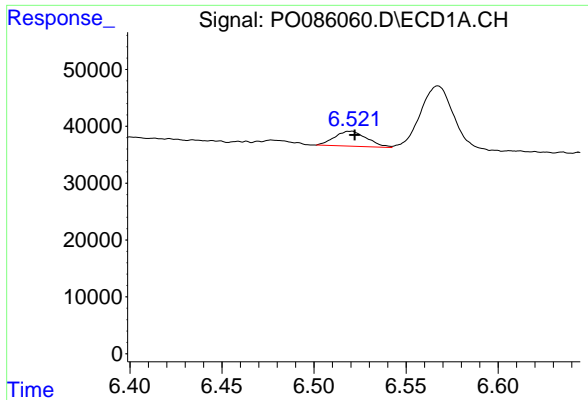
#25 AR-1248-5

R.T.: 6.567 min
 Delta R.T.: -0.020 min
 Response: 140255
 Conc: 45.07 ng/ml



#25 AR-1248-5

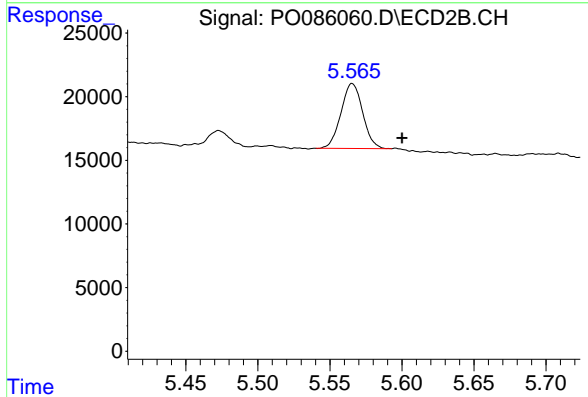
R.T.: 0.000 min
 Exp R.T. : 5.642 min
 Response: 0
 Conc: N.D.



#26 AR-1254-1

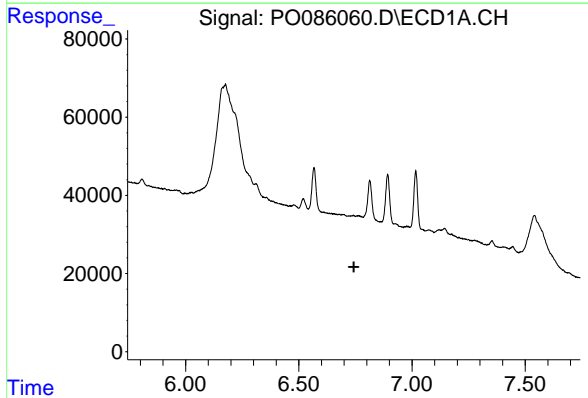
R.T.: 6.521 min
 Delta R.T.: -0.002 min
 Response: 32252
 Conc: 9.58 ng/ml

Instrument :
 ECD_O
 ClientSampleId :
 SB21



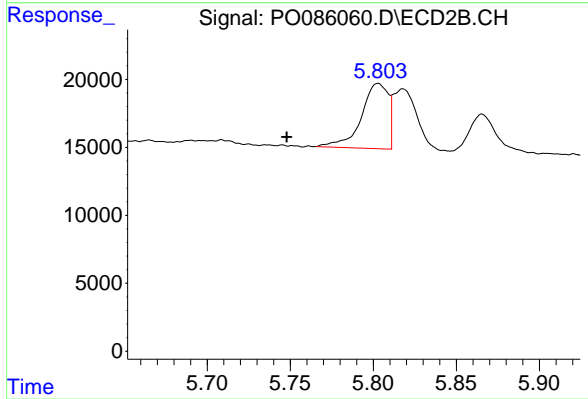
#26 AR-1254-1

R.T.: 5.565 min
 Delta R.T.: -0.035 min
 Response: 53556
 Conc: 21.26 ng/ml



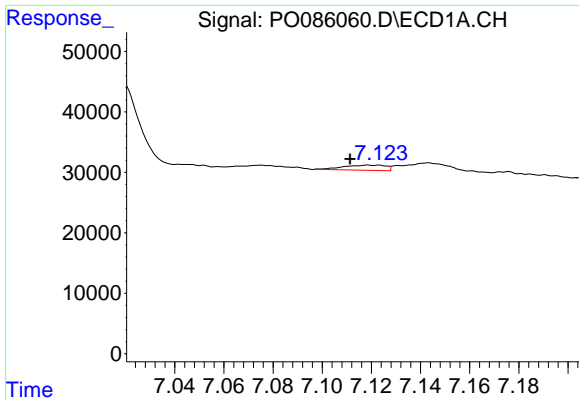
#27 AR-1254-2

R.T.: 0.000 min
 Exp R.T. : 6.743 min
 Response: 0
 Conc: N.D.



#27 AR-1254-2

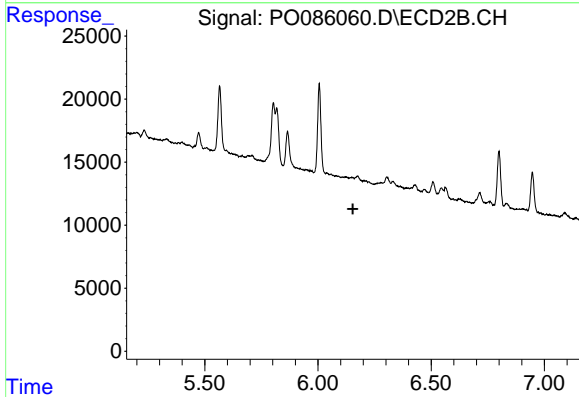
R.T.: 5.803 min
 Delta R.T.: 0.055 min
 Response: 54125
 Conc: 24.72 ng/ml



#28 AR-1254-3

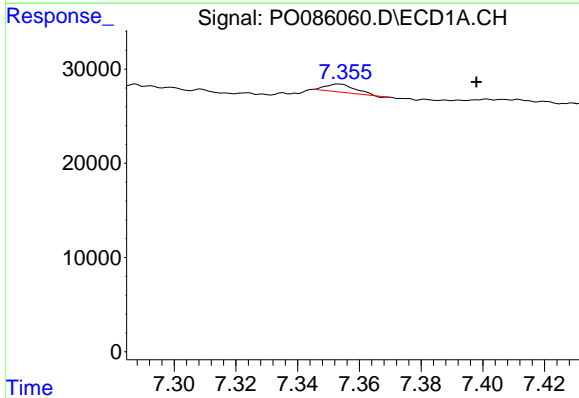
R.T.: 7.119 min
 Delta R.T.: 0.008 min
 Response: 10327
 Conc: 2.04 ng/ml

Instrument :
 ECD_O
 ClientSampleId :
 SB21



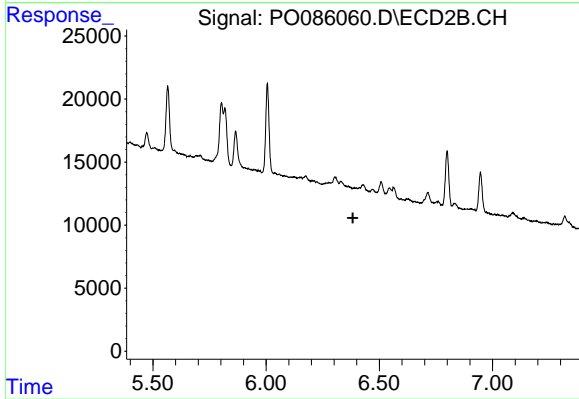
#28 AR-1254-3

R.T.: 0.000 min
 Exp R.T. : 6.154 min
 Response: 0
 Conc: N.D.



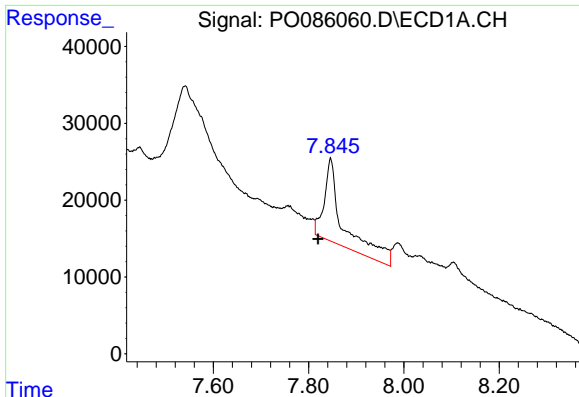
#29 AR-1254-4

R.T.: 7.353 min
 Delta R.T.: -0.044 min
 Response: 5143
 Conc: 1.38 ng/ml



#29 AR-1254-4

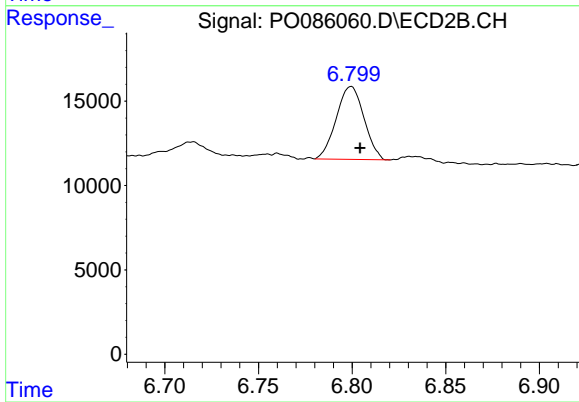
R.T.: 0.000 min
 Exp R.T. : 6.383 min
 Response: 0
 Conc: N.D.



#30 AR-1254-5

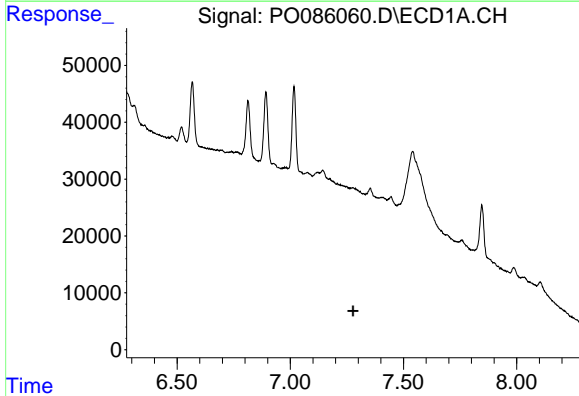
R.T.: 7.846 min
 Delta R.T.: 0.026 min
 Response: 296561
 Conc: 76.11 ng/ml

Instrument :
 ECD_O
 ClientSampleId :
 SB21



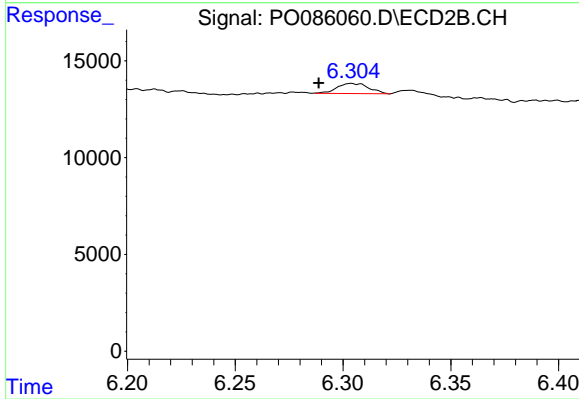
#30 AR-1254-5

R.T.: 6.800 min
 Delta R.T.: -0.005 min
 Response: 44390
 Conc: 15.01 ng/ml



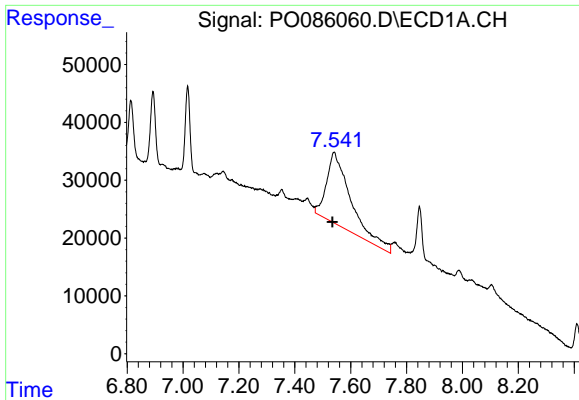
#31 AR-1260-1

R.T.: 0.000 min
 Exp R.T. : 7.277 min
 Response: 0
 Conc: N.D.



#31 AR-1260-1

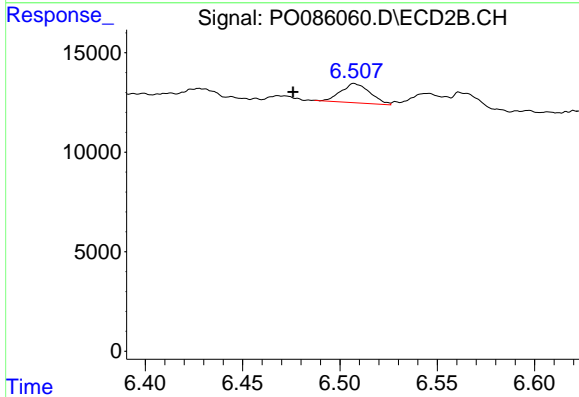
R.T.: 6.304 min
 Delta R.T.: 0.015 min
 Response: 5383
 Conc: 2.77 ng/ml



#32 AR-1260-2

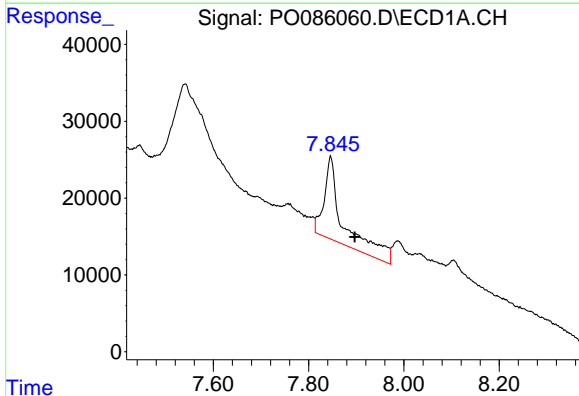
R.T.: 7.541 min
 Delta R.T.: 0.006 min
 Response: 737922
 Conc: 203.99 ng/ml

Instrument :
 ECD_O
 ClientSampleId :
 SB21



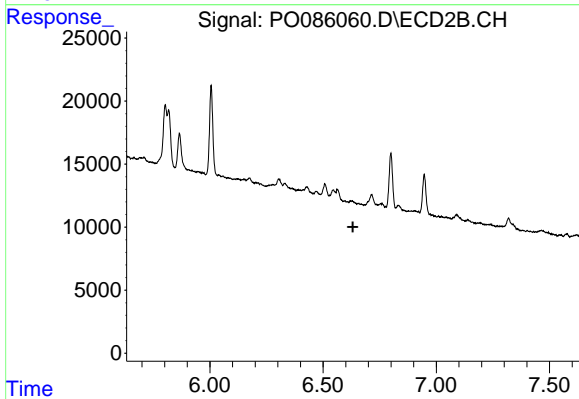
#32 AR-1260-2

R.T.: 6.507 min
 Delta R.T.: 0.031 min
 Response: 10005
 Conc: 4.26 ng/ml



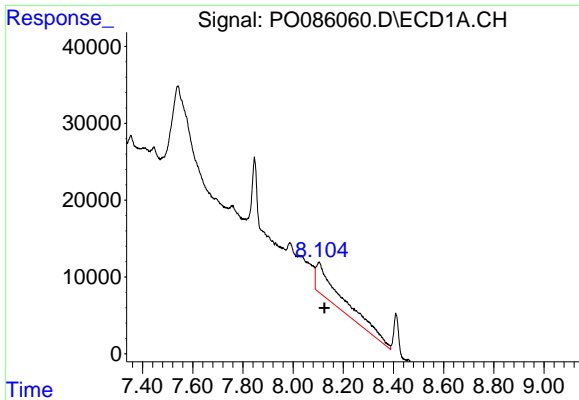
#33 AR-1260-3

R.T.: 7.846 min
 Delta R.T.: -0.051 min
 Response: 296561
 Conc: 107.45 ng/ml



#33 AR-1260-3

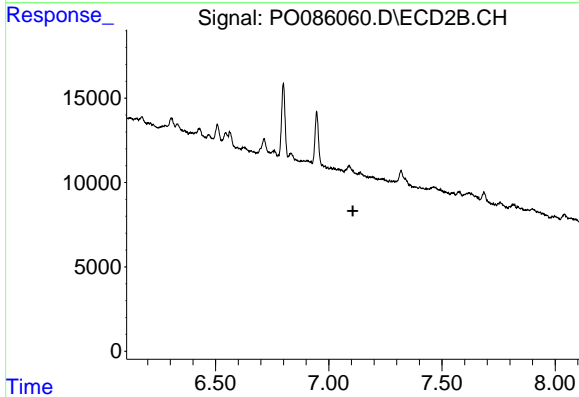
R.T.: 0.000 min
 Exp R.T. : 6.632 min
 Response: 0
 Conc: N.D.



#34 AR-1260-4

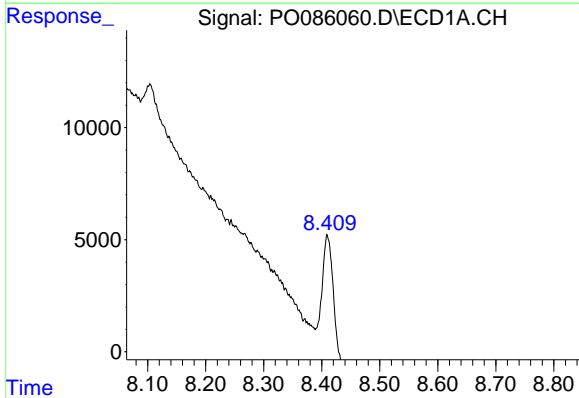
R.T.: 8.104 min
 Delta R.T.: -0.020 min
 Response: 298023
 Conc: 88.33 ng/ml

Instrument :
 ECD_O
 ClientSampleId :
 SB21



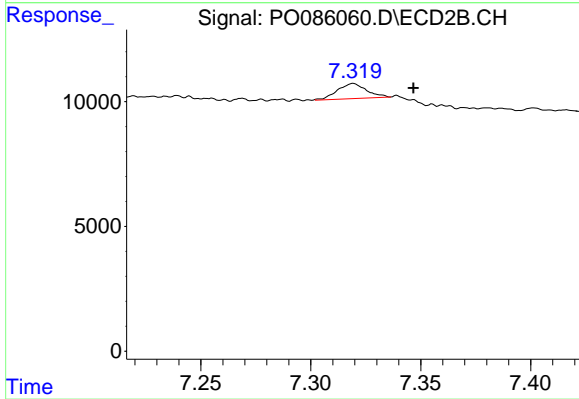
#34 AR-1260-4

R.T.: 0.000 min
 Exp R.T. : 7.106 min
 Response: 0
 Conc: N.D.



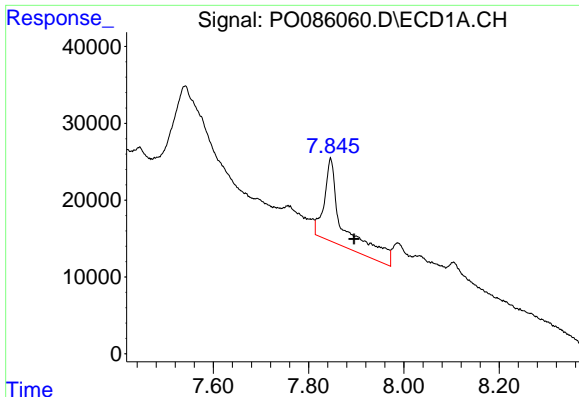
#35 AR-1260-5

R.T.: 8.410 min
 Delta R.T.: -0.043 min
 Response: 75079
 Conc: 12.17 ng/ml



#35 AR-1260-5

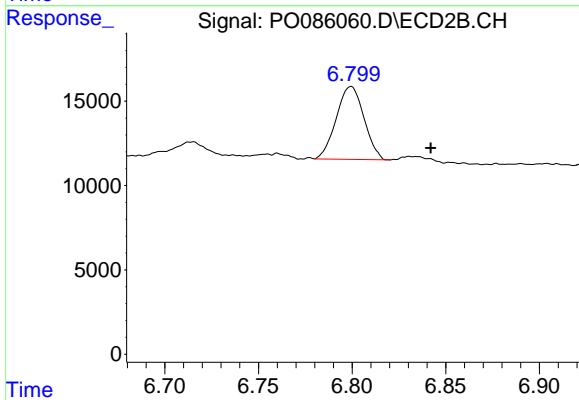
R.T.: 7.319 min
 Delta R.T.: -0.027 min
 Response: 5595
 Conc: 1.29 ng/ml



#36 AR-1262-1

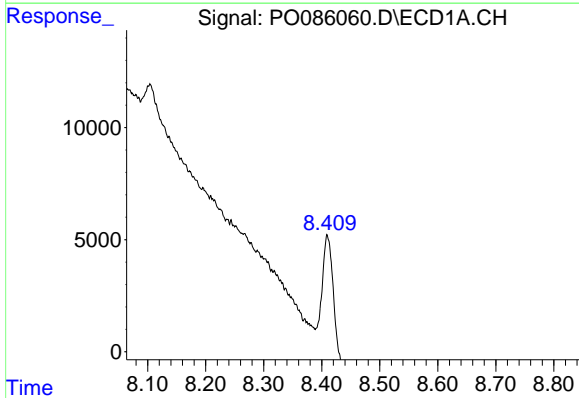
R.T.: 7.846 min
 Delta R.T.: -0.049 min
 Response: 296561
 Conc: 65.57 ng/ml

Instrument :
 ECD_O
 ClientSampleId :
 SB21



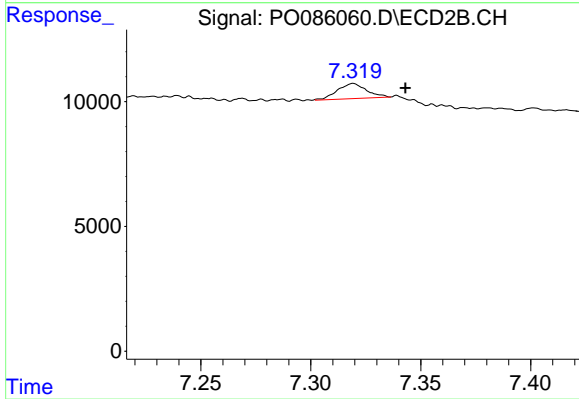
#36 AR-1262-1

R.T.: 6.800 min
 Delta R.T.: -0.042 min
 Response: 44390
 Conc: 14.69 ng/ml



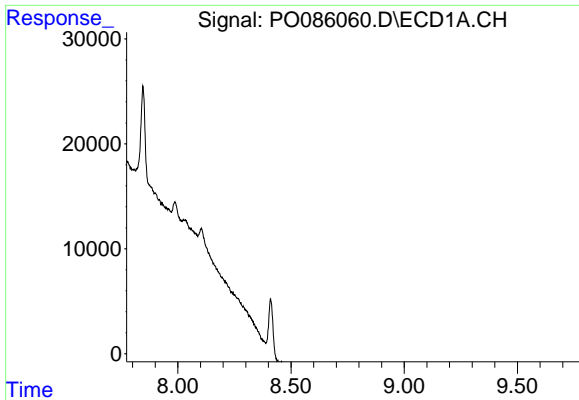
#37 AR-1262-2

R.T.: 8.410 min
 Delta R.T.: -0.040 min
 Response: 75079
 Conc: 9.59 ng/ml



#37 AR-1262-2

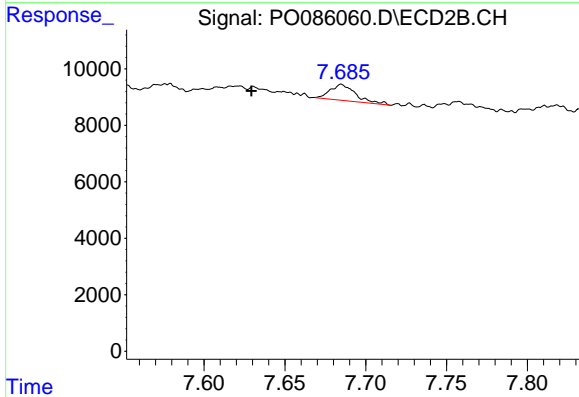
R.T.: 7.319 min
 Delta R.T.: -0.024 min
 Response: 5595
 Conc: 1.02 ng/ml



#38 AR-1262-3

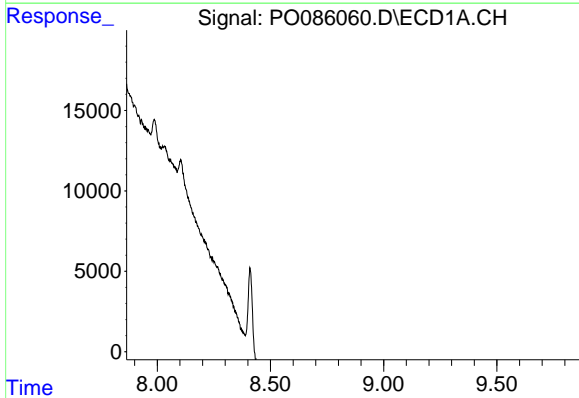
R.T.: 0.000 min
 Exp R.T.: 8.773 min
 Response: 0
 Conc: N.D.

Instrument :
 ECD_O
 ClientSampleId :
 SB21



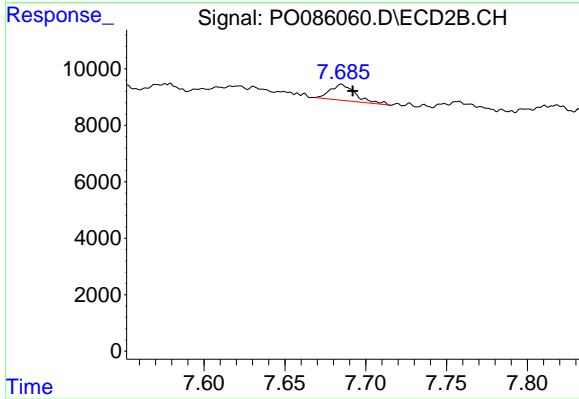
#38 AR-1262-3

R.T.: 7.685 min
 Delta R.T.: 0.056 min
 Response: 6255
 Conc: 2.97 ng/ml



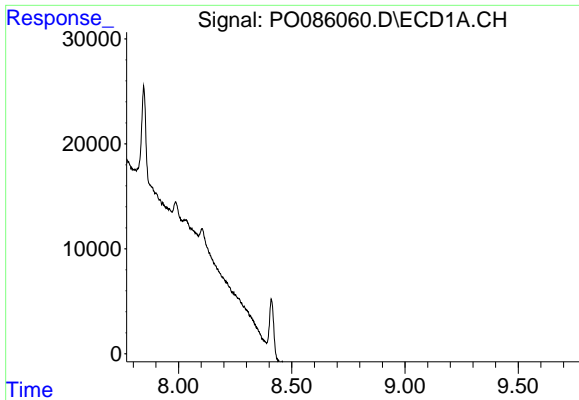
#39 AR-1262-4

R.T.: 0.000 min
 Exp R.T.: 8.864 min
 Response: 0
 Conc: N.D.



#39 AR-1262-4

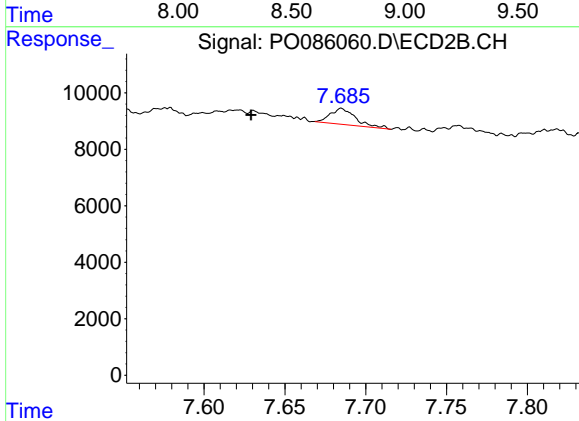
R.T.: 7.685 min
 Delta R.T.: -0.007 min
 Response: 6255
 Conc: 1.58 ng/ml



#41 AR-1268-1

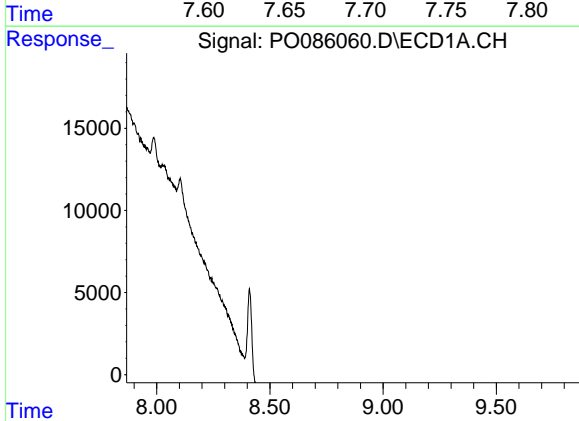
R.T.: 0.000 min
 Exp R.T.: 8.770 min
 Response: 0
 Conc: N.D.

Instrument :
 ECD_O
 ClientSampleId :
 SB21



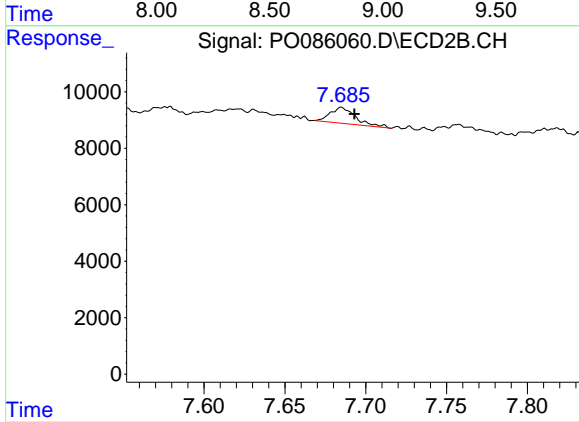
#41 AR-1268-1

R.T.: 7.685 min
 Delta R.T.: 0.056 min
 Response: 6255
 Conc: 1.03 ng/ml



#42 AR-1268-2

R.T.: 0.000 min
 Exp R.T.: 8.867 min
 Response: 0
 Conc: N.D.



#42 AR-1268-2

R.T.: 7.685 min
 Delta R.T.: -0.008 min
 Response: 6255
 Conc: 1.14 ng/ml