

Data Path : Z:\pestpcbsrv\HPCHEM1\ECD_0\Data\P0051623\
 Data File : P0095097.D
 Signal(s) : Signal #1: ECD1A.ch Signal #2: ECD2B.ch
 Acq On : 16 May 2023 09:49
 Operator : YP/AJ
 Sample : AR1660CCC500
 Misc :
 ALS Vial : 3 Sample Multiplier: 1

Instrument :
 ECD_0
ClientSampleId :
 AR1660CCC500

Manual Integrations
APPROVED
 Reviewed By :Yogesh Patel 05/17/2023
 Supervised By :Ankita Jodhani 05/17/2023

Integration File signal 1: autoint1.e
 Integration File signal 2: autoint2.e
 Quant Time: May 16 16:47:38 2023
 Quant Method : Z:\pestpcbsrv\HPCHEM1\ECD_0\methods\P0042623.M
 Quant Title : GC EXTRACTABLES
 QLast Update : Mon May 01 11:12:50 2023
 Response via : Initial Calibration
 Integrator: ChemStation

Volume Inj. : 2 µl
 Signal #1 Phase : ZB-MR2 Signal #2 Phase: ZB-MR2
 Signal #1 Info : 30Mx0.32mmx 0.50µ Signal #2 Info : 30M x 0.32mm x 0.25µm

Compound	RT#1	RT#2	Resp#1	Resp#2	ng/ml	ng/ml

System Monitoring Compounds						
1) SA Tetrachlo...	4.413	3.614	167.5E6	67014968	48.629	50.084
2) SA Decachlor...	10.254	8.624	128.4E6	57820535	52.891	51.370
Target Compounds						
3) L1 AR-1016-1	5.592	4.694	47645551	19977358	467.719	503.694
4) L1 AR-1016-2	5.614	4.712	74339363	30930300	491.318	523.211
5) L1 AR-1016-3	5.677	4.888	47160546	15851022	475.676	504.943
6) L1 AR-1016-4	5.775	4.930	35658009	14420819	479.072	498.708
7) L1 AR-1016-5	6.074	5.143	39030574	17954679	467.809	490.586
31) L7 AR-1260-1	7.213	6.177	70502351	34744647	475.502	493.530
32) L7 AR-1260-2	7.474	6.366	79042811	40606013	487.424	507.934
33) L7 AR-1260-3	7.839	6.518	64352907	37057690	492.245	492.770m
34) L7 AR-1260-4	8.067	6.992	68950965	31407111	493.096	501.716
35) L7 AR-1260-5	8.394	7.236	123.6E6	65676966	505.083	521.086

(f)=RT Delta > 1/2 Window (#)=Amounts differ by > 25% (m)=manual int.

Data Path : Z:\pestpcbsrv\HPCHEM1\ECD_O\Data\PO051623\
 Data File : PO095097.D
 Signal(s) : Signal #1: ECD1A.ch Signal #2: ECD2B.ch
 Acq On : 16 May 2023 09:49
 Operator : YP/AJ
 Sample : AR1660CCC500
 Misc :
 ALS Vial : 3 Sample Multiplier: 1

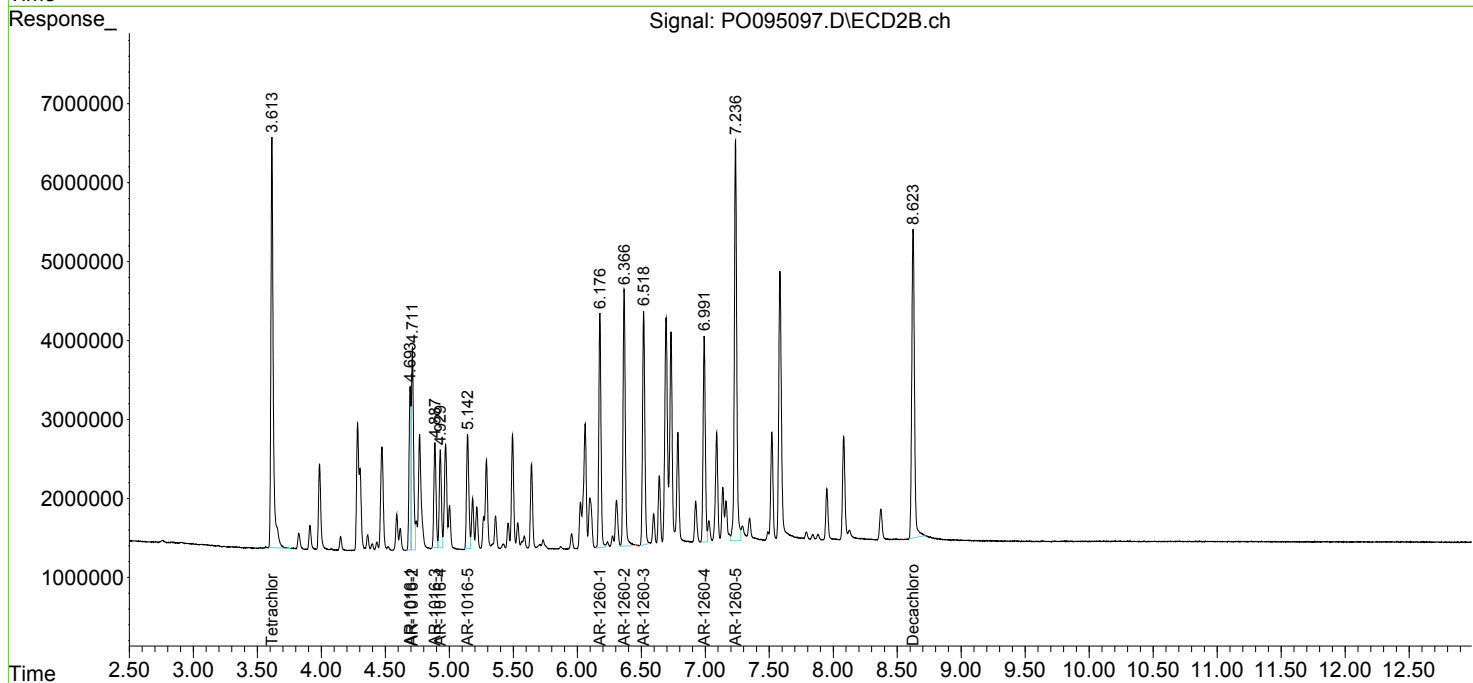
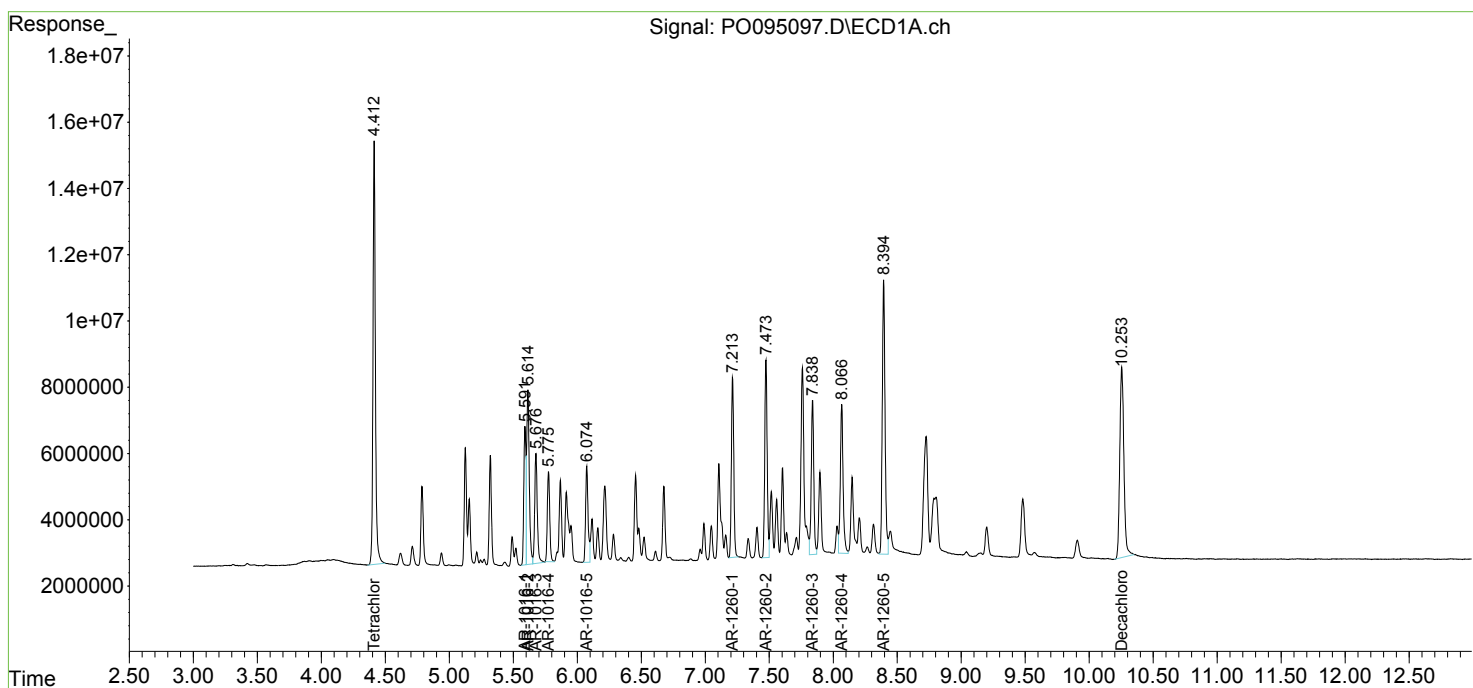
Instrument :
 ECD_O
 ClientSampleId :
 AR1660CCC500

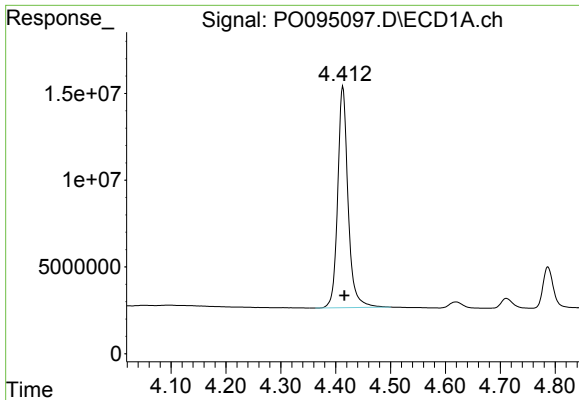
Manual Integrations
 APPROVED

Reviewed By :Yogesh Patel 05/17/2023
 Supervised By :Ankita Jodhani 05/17/2023

Integration File signal 1: autoint1.e
 Integration File signal 2: autoint2.e
 Quant Time: May 16 16:47:38 2023
 Quant Method : Z:\pestpcbsrv\HPCHEM1\ECD_O\methods\PO042623.M
 Quant Title : GC EXTRACTABLES
 QLast Update : Mon May 01 11:12:50 2023
 Response via : Initial Calibration
 Integrator: ChemStation

Volume Inj. : 2 µl
 Signal #1 Phase : ZB-MR1 Signal #2 Phase: ZB-MR2
 Signal #1 Info : 30Mx0.32mmx 0.50µ Signal #2 Info : 30M x 0.32mm x 0.25µm



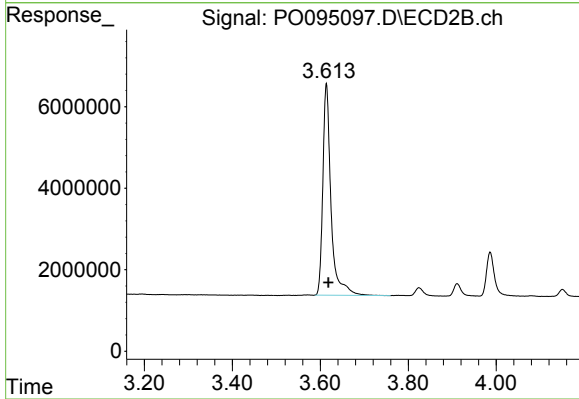


#1 Tetrachloro-m-xylene
 R.T.: 4.413 min
 Delta R.T.: -0.003 min
 Response: 167507616
 Conc: 48.63 ng/ml

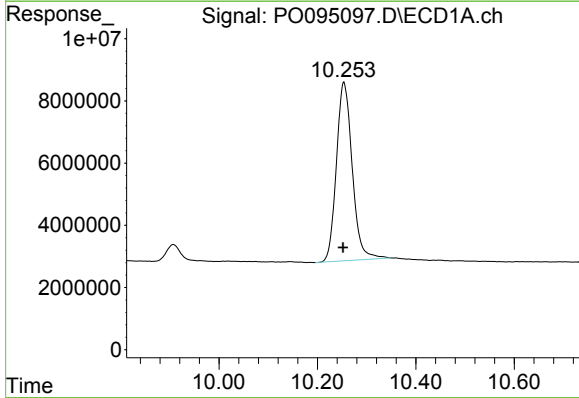
Instrument :
 ECD_O
 ClientSampleId :
 AR1660CCC500

Manual Integrations
 APPROVED

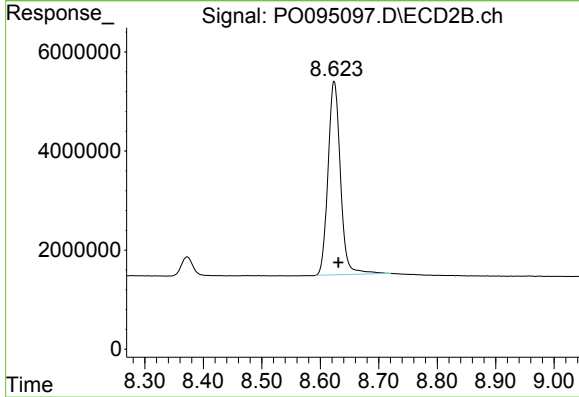
Reviewed By :Yogesh Patel 05/17/2023
 Supervised By :Ankita Jodhani 05/17/2023



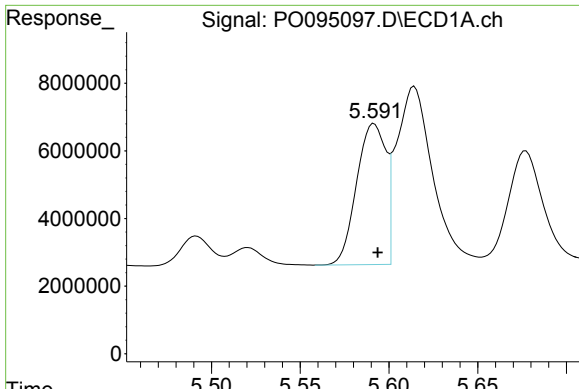
#1 Tetrachloro-m-xylene
 R.T.: 3.614 min
 Delta R.T.: -0.004 min
 Response: 67014968
 Conc: 50.08 ng/ml



#2 Decachlorobiphenyl
 R.T.: 10.254 min
 Delta R.T.: 0.002 min
 Response: 128357502
 Conc: 52.89 ng/ml



#2 Decachlorobiphenyl
 R.T.: 8.624 min
 Delta R.T.: -0.007 min
 Response: 57820535
 Conc: 51.37 ng/ml



#3 AR-1016-1

R.T.: 5.592 min
 Delta R.T.: -0.002 min
 Response: 47645551
 Conc: 467.72 ng/ml

Instrument :

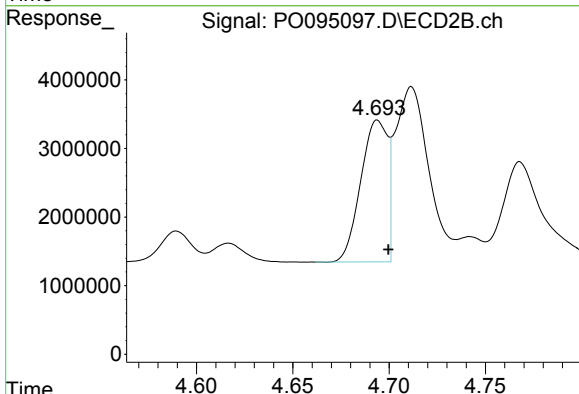
ECD_O

ClientSampleId :

AR1660CCC500

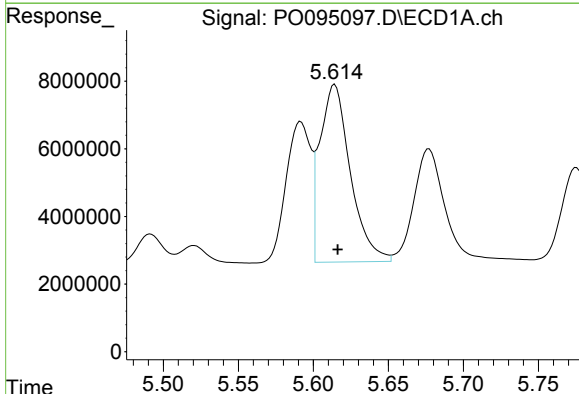
Manual Integrations
 APPROVED

Reviewed By :Yogesh Patel 05/17/2023
 Supervised By :Ankita Jodhani 05/17/2023



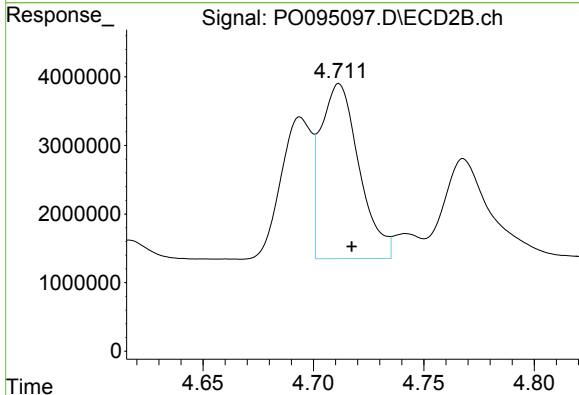
#3 AR-1016-1

R.T.: 4.694 min
 Delta R.T.: -0.006 min
 Response: 19977358
 Conc: 503.69 ng/ml



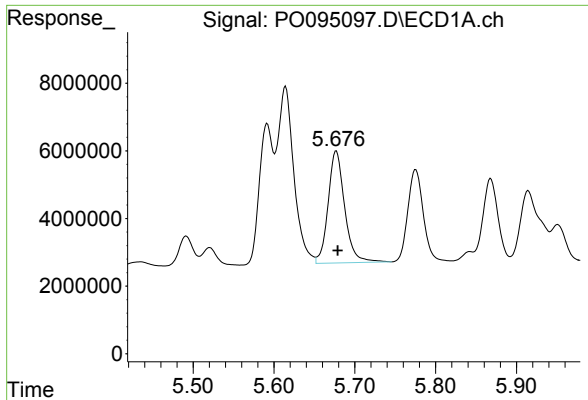
#4 AR-1016-2

R.T.: 5.614 min
 Delta R.T.: -0.002 min
 Response: 74339363
 Conc: 491.32 ng/ml



#4 AR-1016-2

R.T.: 4.712 min
 Delta R.T.: -0.006 min
 Response: 30930300
 Conc: 523.21 ng/ml



#5 AR-1016-3

R.T.: 5.677 min
 Delta R.T.: -0.002 min
 Response: 47160546
 Conc: 475.68 ng/ml

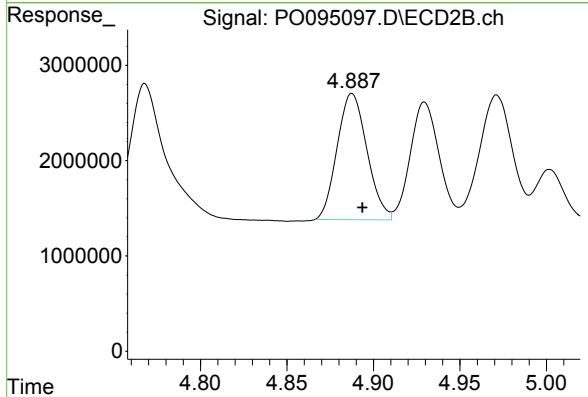
Instrument :

ECD_O

ClientSampleId :
 AR1660CCC500

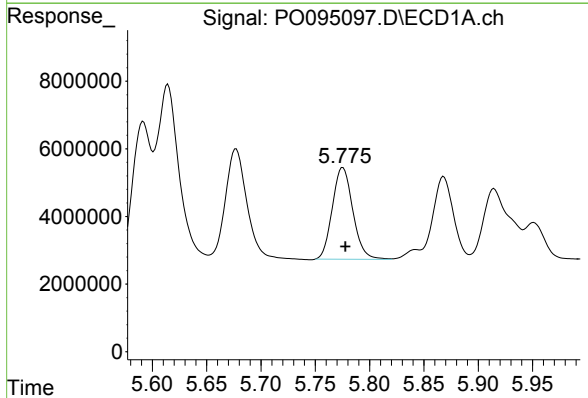
Manual Integrations
 APPROVED

Reviewed By :Yogesh Patel 05/17/2023
 Supervised By :Ankita Jodhani 05/17/2023



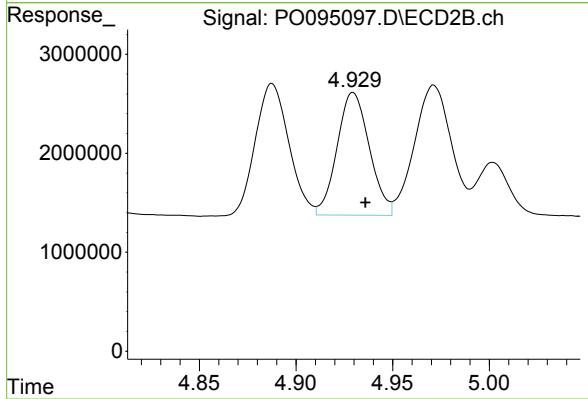
#5 AR-1016-3

R.T.: 4.888 min
 Delta R.T.: -0.006 min
 Response: 15851022
 Conc: 504.94 ng/ml



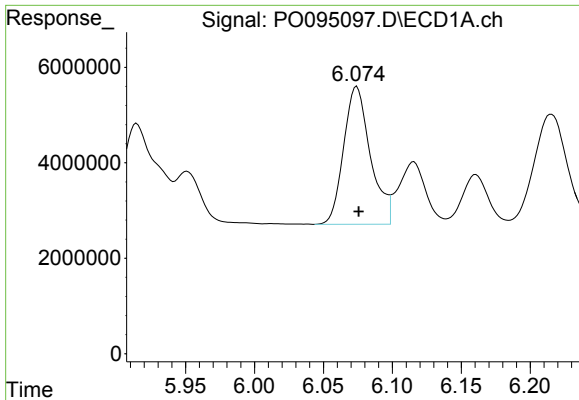
#6 AR-1016-4

R.T.: 5.775 min
 Delta R.T.: -0.002 min
 Response: 35658009
 Conc: 479.07 ng/ml



#6 AR-1016-4

R.T.: 4.930 min
 Delta R.T.: -0.006 min
 Response: 14420819
 Conc: 498.71 ng/ml



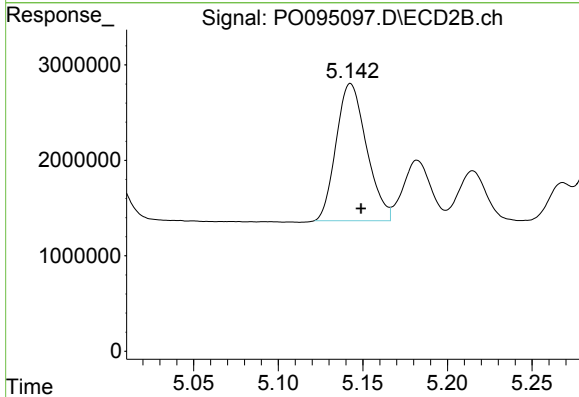
#7 AR-1016-5

R.T.: 6.074 min
 Delta R.T.: -0.001 min
 Response: 39030574
 Conc: 467.81 ng/ml

Instrument :
 ECD_O
 ClientSampleId :
 AR1660CCC500

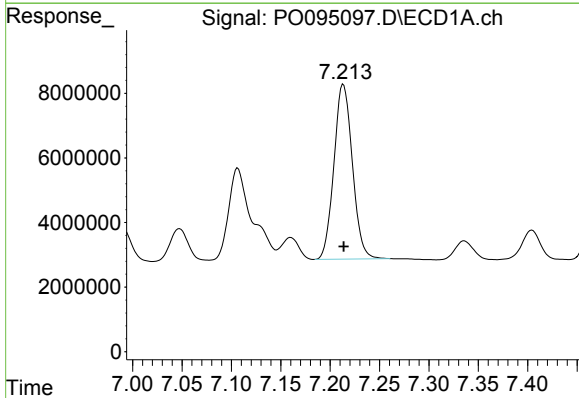
Manual Integrations
 APPROVED

Reviewed By :Yogesh Patel 05/17/2023
 Supervised By :Ankita Jodhani 05/17/2023



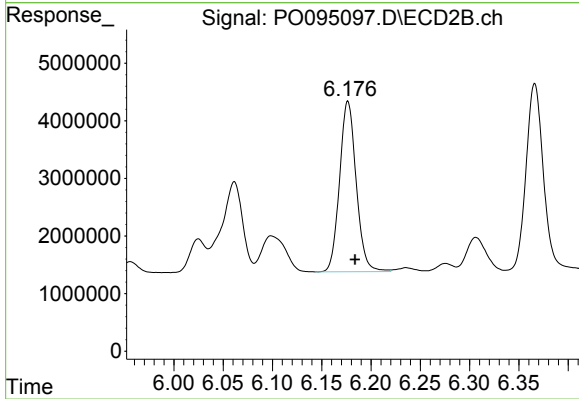
#7 AR-1016-5

R.T.: 5.143 min
 Delta R.T.: -0.006 min
 Response: 17954679
 Conc: 490.59 ng/ml



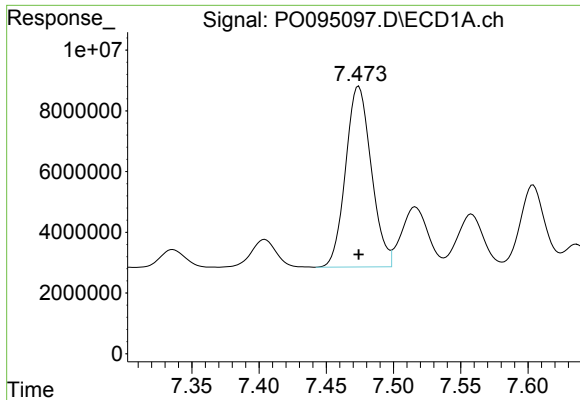
#31 AR-1260-1

R.T.: 7.213 min
 Delta R.T.: 0.000 min
 Response: 70502351
 Conc: 475.50 ng/ml



#31 AR-1260-1

R.T.: 6.177 min
 Delta R.T.: -0.007 min
 Response: 34744647
 Conc: 493.53 ng/ml



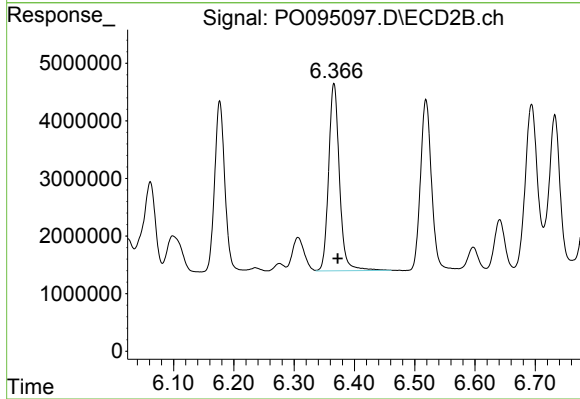
#32 AR-1260-2

R.T.: 7.474 min
 Delta R.T.: 0.000 min
 Response: 79042811
 Conc: 487.42 ng/ml

Instrument :
 ECD_O
 ClientSampleId :
 AR1660CCC500

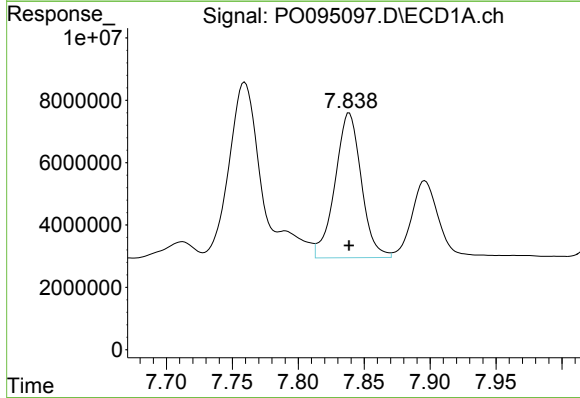
Manual Integrations
 APPROVED

Reviewed By :Yogesh Patel 05/17/2023
 Supervised By :Ankita Jodhani 05/17/2023



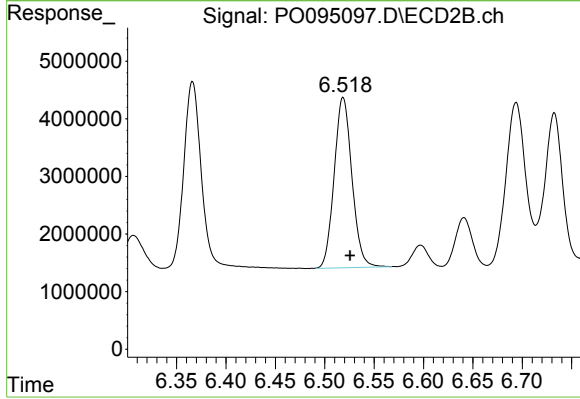
#32 AR-1260-2

R.T.: 6.366 min
 Delta R.T.: -0.007 min
 Response: 40606013
 Conc: 507.93 ng/ml



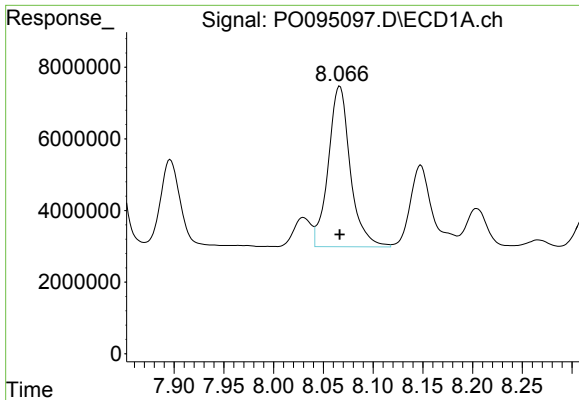
#33 AR-1260-3

R.T.: 7.839 min
 Delta R.T.: 0.000 min
 Response: 64352907
 Conc: 492.25 ng/ml



#33 AR-1260-3

R.T.: 6.518 min
 Delta R.T.: -0.008 min
 Response: 37057690
 Conc: 492.77 ng/ml m



#34 AR-1260-4

R.T.: 8.067 min
 Delta R.T.: 0.000 min
 Response: 68950965
 Conc: 493.10 ng/ml

Instrument :

ECD_O

ClientSampleId :

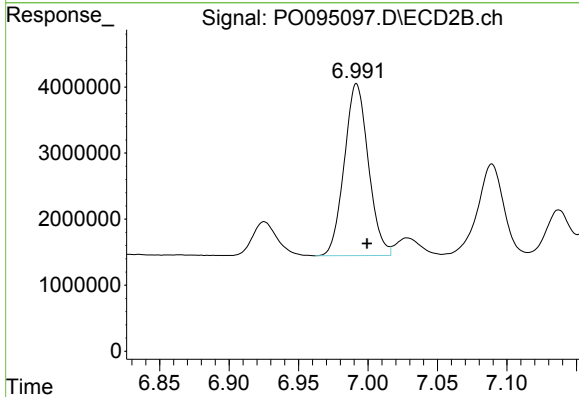
AR1660CCC500

Manual Integrations

APPROVED

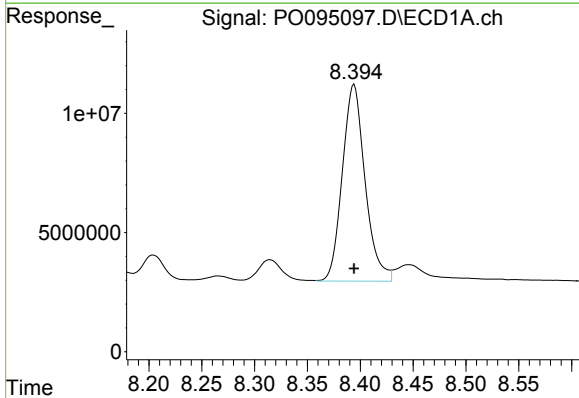
Reviewed By :Yogesh Patel 05/17/2023

Supervised By :Ankita Jodhani 05/17/2023



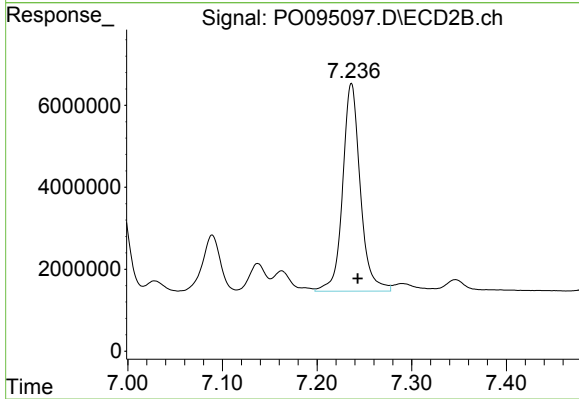
#34 AR-1260-4

R.T.: 6.992 min
 Delta R.T.: -0.008 min
 Response: 31407111
 Conc: 501.72 ng/ml



#35 AR-1260-5

R.T.: 8.394 min
 Delta R.T.: 0.000 min
 Response: 123568868
 Conc: 505.08 ng/ml



#35 AR-1260-5

R.T.: 7.236 min
 Delta R.T.: -0.007 min
 Response: 65676966
 Conc: 521.09 ng/ml