

Data Path : Z:\pestpcbsrv\HPCHEM1\ECD_0\Data\P0051623\
 Data File : P0095102.D
 Signal(s) : Signal #1: ECD1A.ch Signal #2: ECD2B.ch
 Acq On : 16 May 2023 11:14
 Operator : YP/AJ
 Sample : PB152779BS (Sig #1); PB1522779BS (Sig #2)
 Misc :
 ALS Vial : 8 Sample Multiplier: 1

Instrument :
 ECD_0
ClientSampleId :
 PB152779BS

Manual Integrations
APPROVED

Reviewed By :Yogesh Patel 05/17/2023
 Supervised By :Ankita Jodhani 05/17/2023

Integration File signal 1: autoint1.e
 Integration File signal 2: autoint2.e
 Quant Time: May 16 16:49:20 2023
 Quant Method : Z:\pestpcbsrv\HPCHEM1\ECD_0\methods\P0042623.M
 Quant Title : GC EXTRACTABLES
 QLast Update : Mon May 01 11:12:50 2023
 Response via : Initial Calibration
 Integrator: ChemStation

Volume Inj. : 2 µl
 Signal #1 Phase : ZB-MR1 Signal #2 Phase: ZB-MR2
 Signal #1 Info : 30Mx0.32mmx 0.50µ Signal #2 Info : 30M x 0.32mm x 0.25µm

Compound	RT#1	RT#2	Resp#1	Resp#2	ng/ml	ng/ml

System Monitoring Compounds						
1) SA Tetrachlo...	4.414	3.614	68867851	27582376	19.993	20.614m
2) SA Decachlor...	10.258	8.626	55365807	26462822	22.814	23.510
Target Compounds						
3) L1 AR-1016-1	5.593	4.695	42865554	16973453	420.795	427.956
4) L1 AR-1016-2	5.616	4.713	66364314	26488530	438.610	448.075
5) L1 AR-1016-3	5.679	4.888	42032855	13637610	423.956	434.434
6) L1 AR-1016-4	5.777	4.931	31923987	12758364	428.905	441.216
7) L1 AR-1016-5	6.076	5.144	34115903	15437724	408.903	421.814
31) L7 AR-1260-1	7.215	6.178	60827171	29898421	410.248	424.692
32) L7 AR-1260-2	7.476	6.368	68199968	34470022	420.561	431.180
33) L7 AR-1260-3	7.840	6.520	48550592	31726137	371.371	421.875
34) L7 AR-1260-4	8.066	6.994	55394718	24316189	396.150	388.441
35) L7 AR-1260-5	8.396	7.238	94951903	51576997	388.112	409.216

(f)=RT Delta > 1/2 Window (#)=Amounts differ by > 25% (m)=manual int.

Data Path : Z:\pestpcbsrv\HPCHEM1\ECD_O\Data\PO051623\
 Data File : PO095102.D
 Signal(s) : Signal #1: ECD1A.ch Signal #2: ECD2B.ch
 Acq On : 16 May 2023 11:14
 Operator : YP/AJ
 Sample : PB152779BS (Sig #1); PB1522779BS (Sig #2)
 Misc :
 ALS Vial : 8 Sample Multiplier: 1

Instrument :

ECD_O

ClientSampleId :

PB152779BS

Manual Integrations

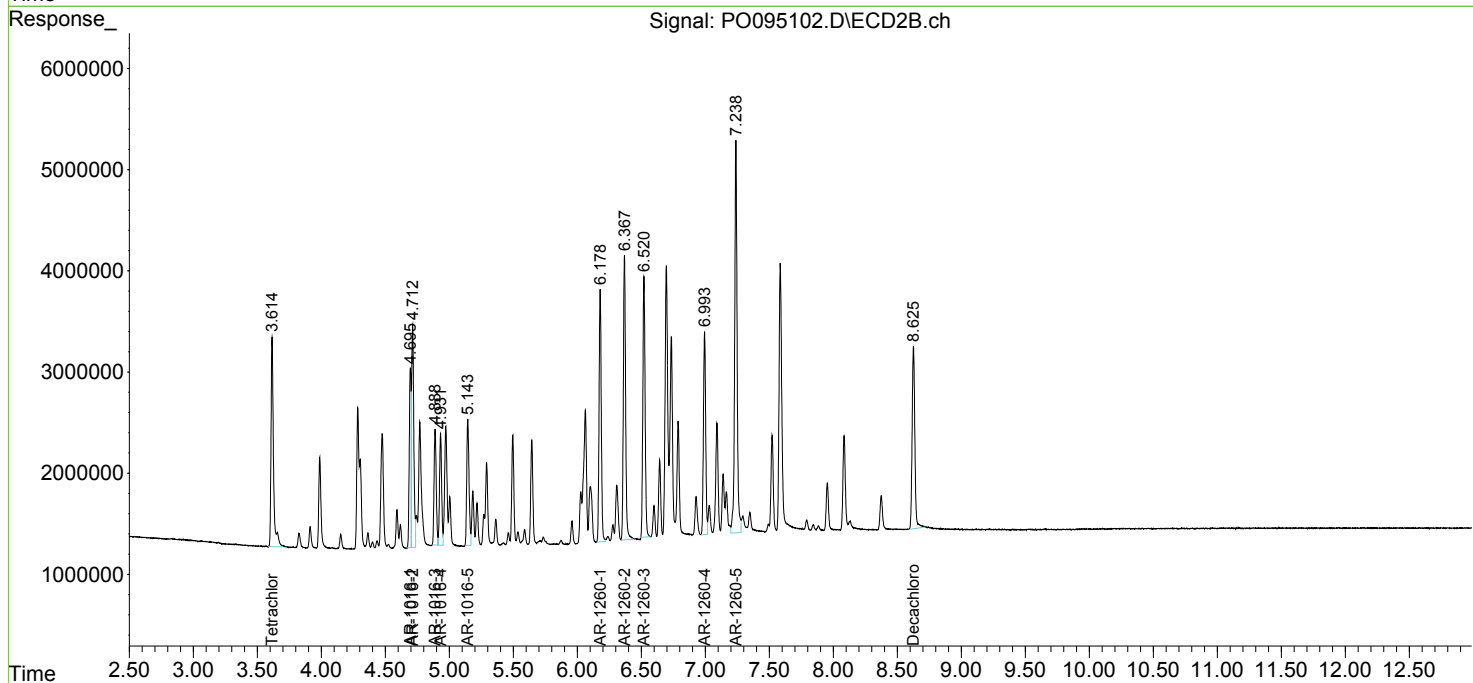
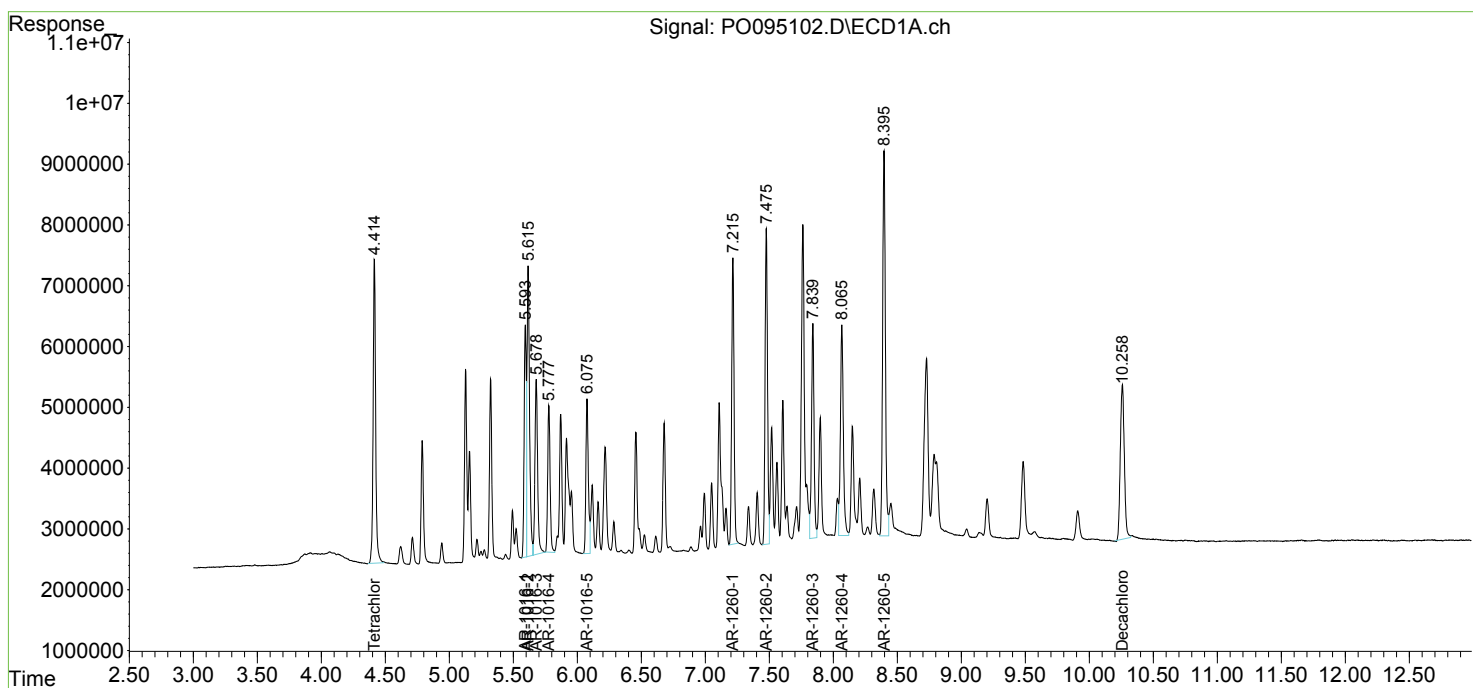
APPROVED

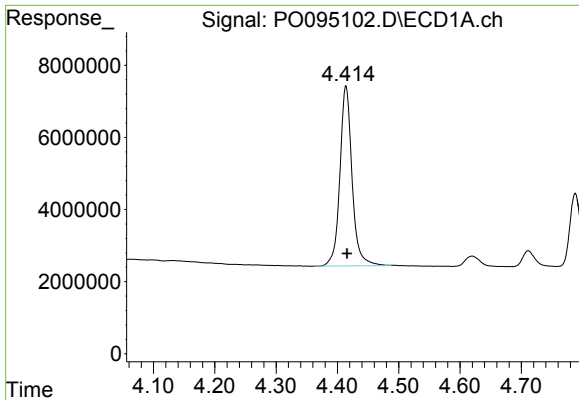
Reviewed By :Yogesh Patel 05/17/2023

Supervised By :Ankita Jodhani 05/17/2023

Integration File signal 1: autoint1.e
 Integration File signal 2: autoint2.e
 Quant Time: May 16 16:49:20 2023
 Quant Method : Z:\pestpcbsrv\HPCHEM1\ECD_O\methods\PO042623.M
 Quant Title : GC EXTRACTABLES
 QLast Update : Mon May 01 11:12:50 2023
 Response via : Initial Calibration
 Integrator: ChemStation

Volume Inj. : 2 µl
 Signal #1 Phase : ZB-MR1 Signal #2 Phase: ZB-MR2
 Signal #1 Info : 30Mx0.32mmx 0.50µ Signal #2 Info : 30M x 0.32mm x 0.25µm



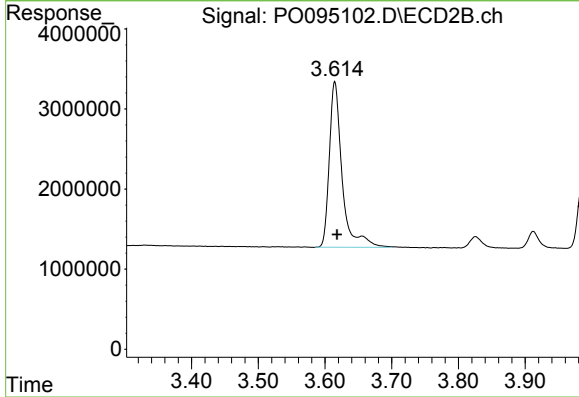


#1 Tetrachloro-m-xylene
 R.T.: 4.414 min
 Delta R.T.: -0.002 min
 Response: 68867851
 Conc: 19.99 ng/ml

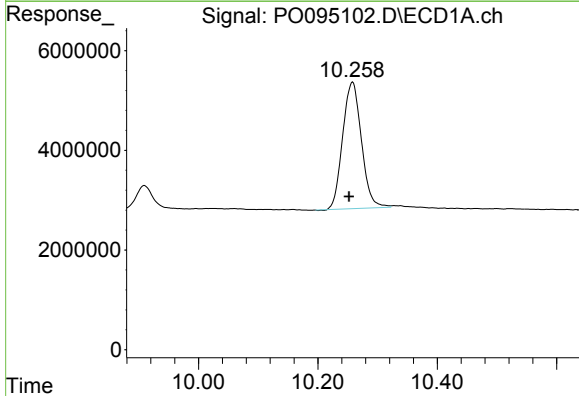
Instrument :
 ECD_O
 ClientSampleId :
 PB152779BS

Manual Integrations
 APPROVED

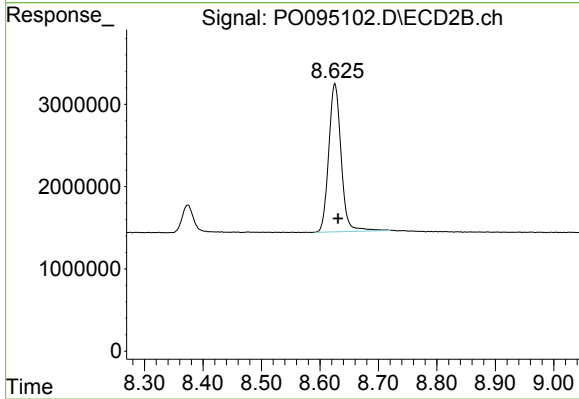
Reviewed By :Yogesh Patel 05/17/2023
 Supervised By :Ankita Jodhani 05/17/2023



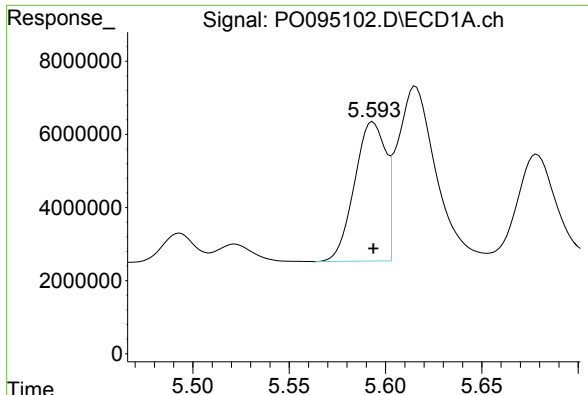
#1 Tetrachloro-m-xylene
 R.T.: 3.614 min
 Delta R.T.: -0.004 min
 Response: 27582376
 Conc: 20.61 ng/ml m



#2 Decachlorobiphenyl
 R.T.: 10.258 min
 Delta R.T.: 0.006 min
 Response: 55365807
 Conc: 22.81 ng/ml



#2 Decachlorobiphenyl
 R.T.: 8.626 min
 Delta R.T.: -0.006 min
 Response: 26462822
 Conc: 23.51 ng/ml



#3 AR-1016-1

R.T.: 5.593 min
 Delta R.T.: 0.000 min
 Response: 42865554
 Conc: 420.80 ng/ml

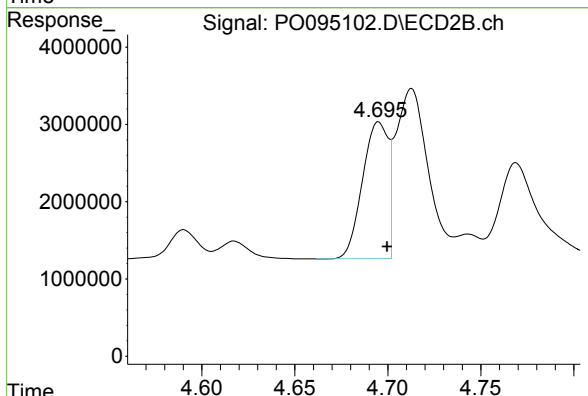
Instrument :

ECD_O

ClientSampleId :
 PB152779BS

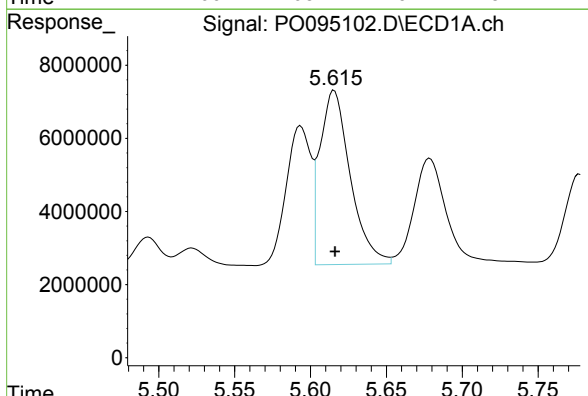
Manual Integrations
 APPROVED

Reviewed By :Yogesh Patel 05/17/2023
 Supervised By :Ankita Jodhani 05/17/2023



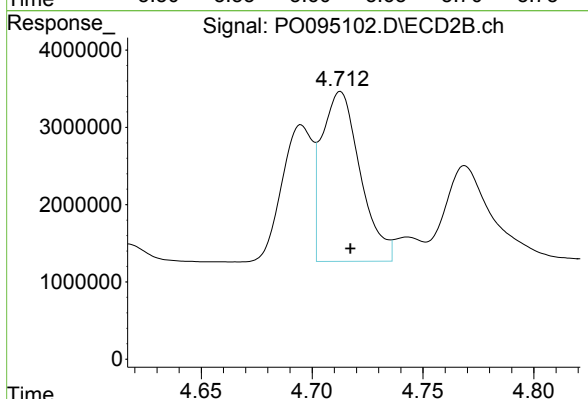
#3 AR-1016-1

R.T.: 4.695 min
 Delta R.T.: -0.005 min
 Response: 16973453
 Conc: 427.96 ng/ml



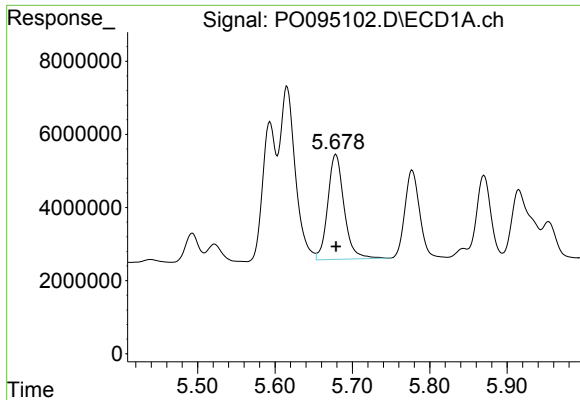
#4 AR-1016-2

R.T.: 5.616 min
 Delta R.T.: 0.000 min
 Response: 66364314
 Conc: 438.61 ng/ml



#4 AR-1016-2

R.T.: 4.713 min
 Delta R.T.: -0.005 min
 Response: 26488530
 Conc: 448.08 ng/ml



#5 AR-1016-3

R.T.: 5.679 min
 Delta R.T.: 0.000 min
 Response: 42032855
 Conc: 423.96 ng/ml

Instrument :

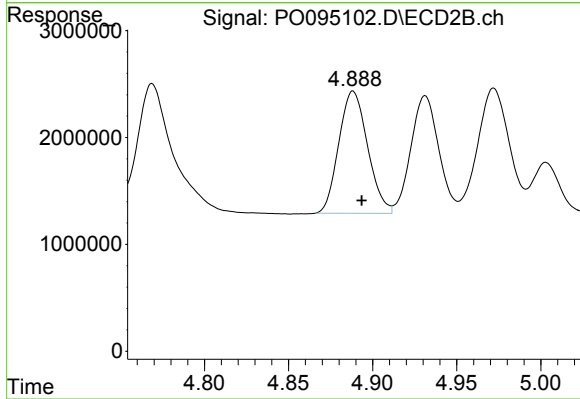
ECD_O

ClientSampleId :

PB152779BS

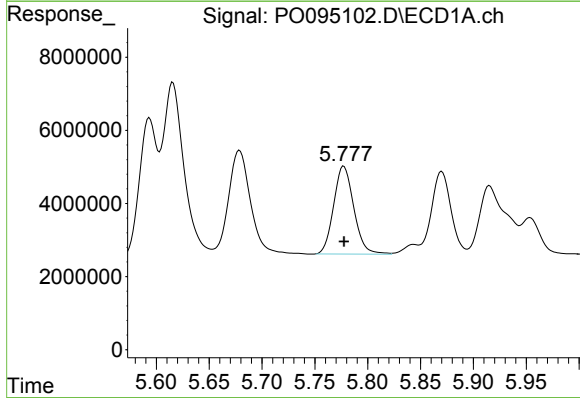
Manual Integrations
 APPROVED

Reviewed By :Yogesh Patel 05/17/2023
 Supervised By :Ankita Jodhani 05/17/2023



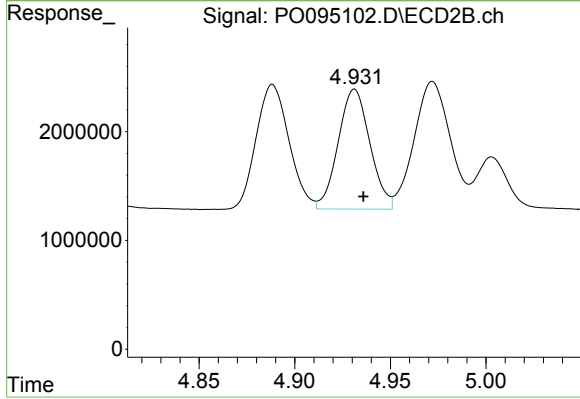
#5 AR-1016-3

R.T.: 4.888 min
 Delta R.T.: -0.005 min
 Response: 13637610
 Conc: 434.43 ng/ml



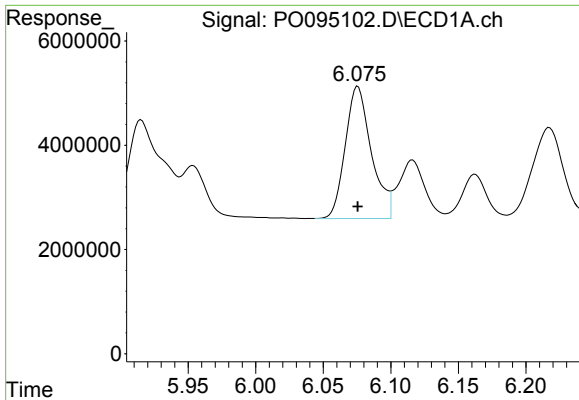
#6 AR-1016-4

R.T.: 5.777 min
 Delta R.T.: 0.000 min
 Response: 31923987
 Conc: 428.91 ng/ml



#6 AR-1016-4

R.T.: 4.931 min
 Delta R.T.: -0.005 min
 Response: 12758364
 Conc: 441.22 ng/ml



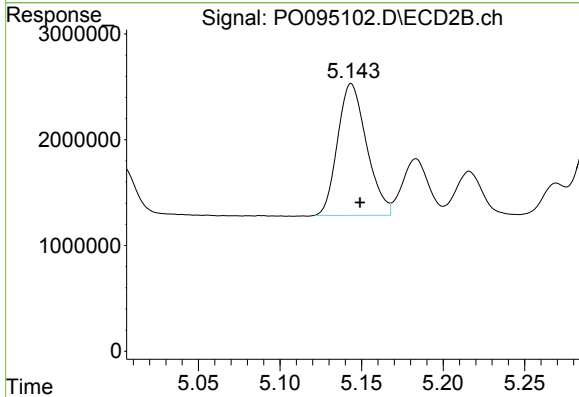
#7 AR-1016-5

R.T.: 6.076 min
 Delta R.T.: 0.000 min
 Response: 34115903
 Conc: 408.90 ng/ml

Instrument :
 ECD_O
 ClientSampleId :
 PB152779BS

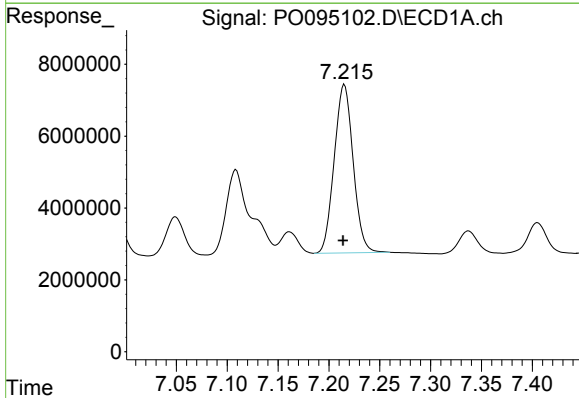
Manual Integrations
 APPROVED

Reviewed By :Yogesh Patel 05/17/2023
 Supervised By :Ankita Jodhani 05/17/2023



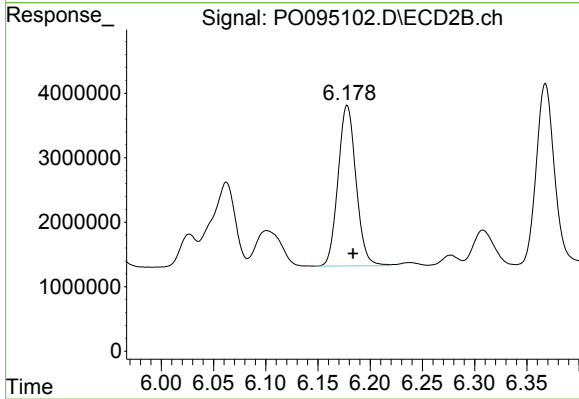
#7 AR-1016-5

R.T.: 5.144 min
 Delta R.T.: -0.005 min
 Response: 15437724
 Conc: 421.81 ng/ml



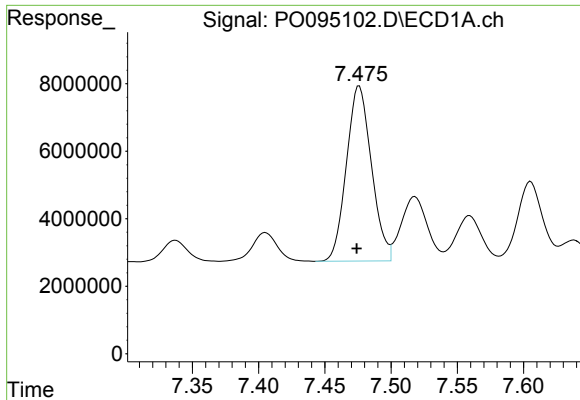
#31 AR-1260-1

R.T.: 7.215 min
 Delta R.T.: 0.001 min
 Response: 60827171
 Conc: 410.25 ng/ml



#31 AR-1260-1

R.T.: 6.178 min
 Delta R.T.: -0.006 min
 Response: 29898421
 Conc: 424.69 ng/ml



#32 AR-1260-2

R.T.: 7.476 min
 Delta R.T.: 0.002 min
 Response: 68199968
 Conc: 420.56 ng/ml

Instrument :

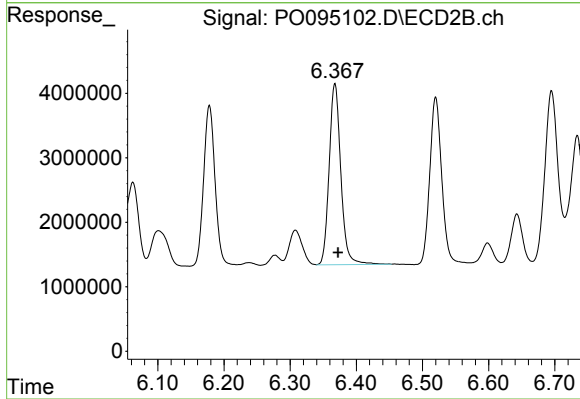
ECD_O

ClientSampleId :

PB152779BS

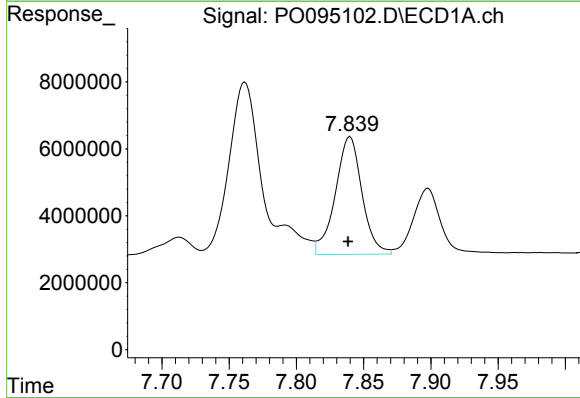
Manual Integrations
 APPROVED

Reviewed By :Yogesh Patel 05/17/2023
 Supervised By :Ankita Jodhani 05/17/2023



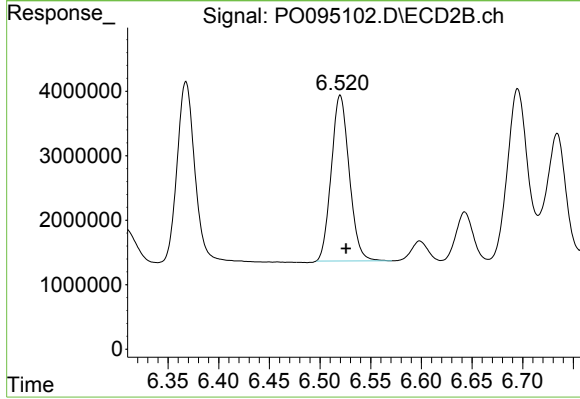
#32 AR-1260-2

R.T.: 6.368 min
 Delta R.T.: -0.005 min
 Response: 34470022
 Conc: 431.18 ng/ml



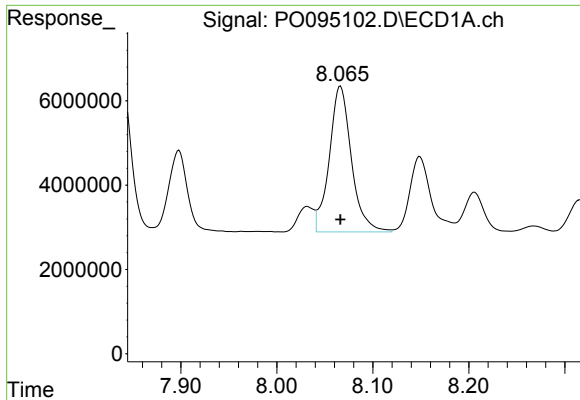
#33 AR-1260-3

R.T.: 7.840 min
 Delta R.T.: 0.001 min
 Response: 48550592
 Conc: 371.37 ng/ml



#33 AR-1260-3

R.T.: 6.520 min
 Delta R.T.: -0.006 min
 Response: 31726137
 Conc: 421.87 ng/ml



#34 AR-1260-4

R.T.: 8.066 min
 Delta R.T.: 0.000 min
 Response: 55394718
 Conc: 396.15 ng/ml

Instrument :

ECD_O

ClientSampleId :

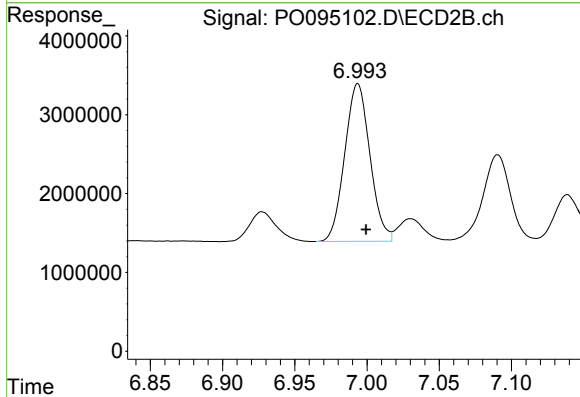
PB152779BS

Manual Integrations

APPROVED

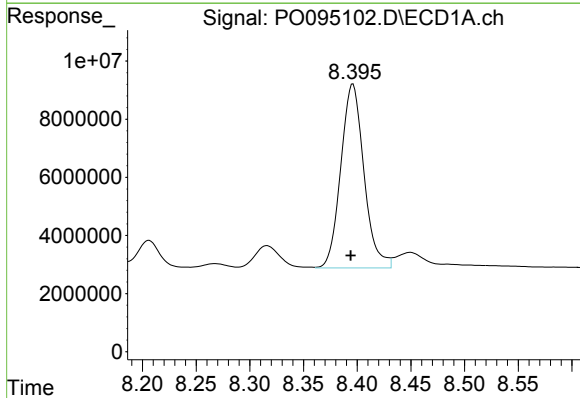
Reviewed By :Yogesh Patel 05/17/2023

Supervised By :Ankita Jodhani 05/17/2023



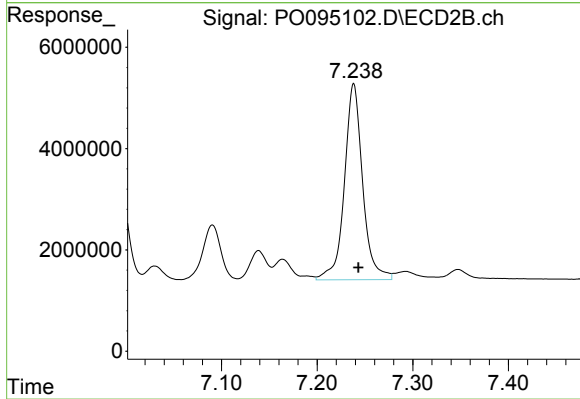
#34 AR-1260-4

R.T.: 6.994 min
 Delta R.T.: -0.006 min
 Response: 24316189
 Conc: 388.44 ng/ml



#35 AR-1260-5

R.T.: 8.396 min
 Delta R.T.: 0.002 min
 Response: 94951903
 Conc: 388.11 ng/ml



#35 AR-1260-5

R.T.: 7.238 min
 Delta R.T.: -0.005 min
 Response: 51576997
 Conc: 409.22 ng/ml