

Data Path : Z:\pestpcbsrv\HPCHEM1\ECD_0\Data\P0051721\
 Data File : P0077865.D
 Signal(s) : Signal #1: ECD1A.CH Signal #2: ECD2B.CH
 Acq On : 17 May 2021 10:58
 Operator : DD\AJ
 Sample : M2283-03
 Misc :
 ALS Vial : 7 Sample Multiplier: 1

Instrument :
 ECD_0
 ClientSampleId :
 KSB-03(7-9)

Integration File signal 1: autoint1.e
 Integration File signal 2: autoint2.e
 Quant Time: May 17 12:46:32 2021
 Quant Method : Z:\pestpcbsrv\HPCHEM1\ECD_0\methods\P0051321.M
 Quant Title : GC EXTRACTABLES
 QLast Update : Fri May 14 05:52:29 2021
 Response via : Initial Calibration
 Integrator: ChemStation 6890 Scale Mode: Small noise peaks clipped

Volume Inj. : 2 µl
 Signal #1 Phase : ZB-MR1 Signal #2 Phase: ZB-MR2
 Signal #1 Info : 30Mx0.32mmx 0.50µ Signal #2 Info : 30M x 0.32mm x 0.25µm

Compound	RT#1	RT#2	Resp#1	Resp#2	ng/ml	ng/ml
System Monitoring Compounds						
1) SA Tetrachlo...	4.351	3.630	1592337	672306	27.126	26.422
2) SA Decachlor...	9.967	8.824	954662	572831	23.092	23.836
Target Compounds						
3) L1 AR-1016-1	5.671f	0.000	53159	0	27.345	N.D. #
4) L1 AR-1016-2	5.671	0.000	53159	0	18.389	N.D. #
5) L1 AR-1016-3	5.736	0.000	13854	0	7.744	N.D. #
7) L1 AR-1016-5	0.000	5.346	0	504	N.D.	0.692 #
9) L2 AR-1221-2	0.000	3.972	0	10278	N.D.	43.054 #
10) L2 AR-1221-3	0.000	4.066	0	2898	N.D.	3.702 #
11) L3 AR-1232-1	0.000	4.066	0	2898	N.D.	5.062 #
12) L3 AR-1232-2	5.355	0.000	274800	0	412.204	N.D. #
13) L3 AR-1232-3	5.671	0.000	53159	0	44.166	N.D. #
14) L3 AR-1232-4	0.000	5.170	0	27238	N.D.	102.138 #
15) L3 AR-1232-5	5.933	5.346	61954	504	155.995	1.797 #
16) L4 AR-1242-1	5.671f	0.000	53159	0	35.468	N.D. #
17) L4 AR-1242-2	5.671	0.000	53159	0	23.556	N.D. #
18) L4 AR-1242-3	5.736	0.000	13854	0	10.004	N.D. #
19) L4 AR-1242-4	0.000	5.170	0	27238	N.D.	48.125 #
20) L4 AR-1242-5	0.000	5.719	0	39879	N.D.	57.991 #
21) L5 AR-1248-1	5.671f	0.000	53159	0	46.331	N.D. #
22) L5 AR-1248-2	5.933	0.000	61954	0	39.019	N.D. #
23) L5 AR-1248-3	0.000	5.170	0	27238	N.D.	33.748 #
24) L5 AR-1248-4	6.566	5.346	46894	504	23.936	0.526 #
25) L5 AR-1248-5	0.000	5.763	0	4369	N.D.	4.729 #
26) L6 AR-1254-1	6.535	5.719	23589	39879	11.119	27.099 #
27) L6 AR-1254-2	6.771	5.878	278688	22096	85.734	16.374 #
28) L6 AR-1254-3	7.159	6.290	422007	57814	128.015	28.538 #
29) L6 AR-1254-4	7.432	6.526	150585	21366	64.847	17.067 #
30) L6 AR-1254-5	7.858	6.952	58804	320615	22.530	169.185 #
31) L7 AR-1260-1	7.307	6.424	117537	80398	46.233	54.573
32) L7 AR-1260-2	7.576	6.624	448736	78622	160.676	45.326 #
33) L7 AR-1260-3	0.000	6.772	0	21938	N.D.	13.398 #
34) L7 AR-1260-4	8.156	7.244	153734	19638	70.398	16.231 #
35) L7 AR-1260-5	8.470	7.495	107637	37583	24.876	13.219 #
36) L8 AR-1262-1	0.000	6.952	0	320615	N.D.	324.254 #
37) L8 AR-1262-2	8.470	7.495	107637	37583	20.943	11.287 #
38) L8 AR-1262-3	0.000	7.781	0	16303	N.D.	11.813 #
39) L8 AR-1262-4	8.803f	7.842	107075	46753	68.239	18.740 #
40) L8 AR-1262-5	0.000	8.336	0	7492	N.D.	6.455 #
41) L9 AR-1268-1	0.000	7.781	0	16303	N.D.	4.488 #
42) L9 AR-1268-2	8.803f	7.842	107075	46753	19.401	14.181 #
44) L9 AR-1268-4	0.000	8.336	0	7492	N.D.	6.131 #

Data Path : Z:\pestpcbsrv\HPCHEM1\ECD_0\Data\P0051721\
 Data File : P0077865.D
 Signal(s) : Signal #1: ECD1A.CH Signal #2: ECD2B.CH
 Acq On : 17 May 2021 10:58
 Operator : DD\AJ
 Sample : M2283-03
 Misc :
 ALS Vial : 7 Sample Multiplier: 1

Instrument :
 ECD_0
 ClientSampleId :
 KSB-03(7-9)

Integration File signal 1: autoint1.e
 Integration File signal 2: autoint2.e
 Quant Time: May 17 12:46:32 2021
 Quant Method : Z:\pestpcbsrv\HPCHEM1\ECD_0\methods\P0051321.M
 Quant Title : GC EXTRACTABLES
 QLast Update : Fri May 14 05:52:29 2021
 Response via : Initial Calibration
 Integrator: ChemStation 6890 Scale Mode: Small noise peaks clipped

Volume Inj. : 2 µl
 Signal #1 Phase : ZB-MR1 Signal #2 Phase: ZB-MR2
 Signal #1 Info : 30Mx0.32mmx 0.50µ Signal #2 Info : 30M x 0.32mm x 0.25µm

	Compound	RT#1	RT#2	Resp#1	Resp#2	ng/ml	ng/ml
45)	L9 AR-1268-5	0.000	8.607	0	13433	N.D.	1.564 #

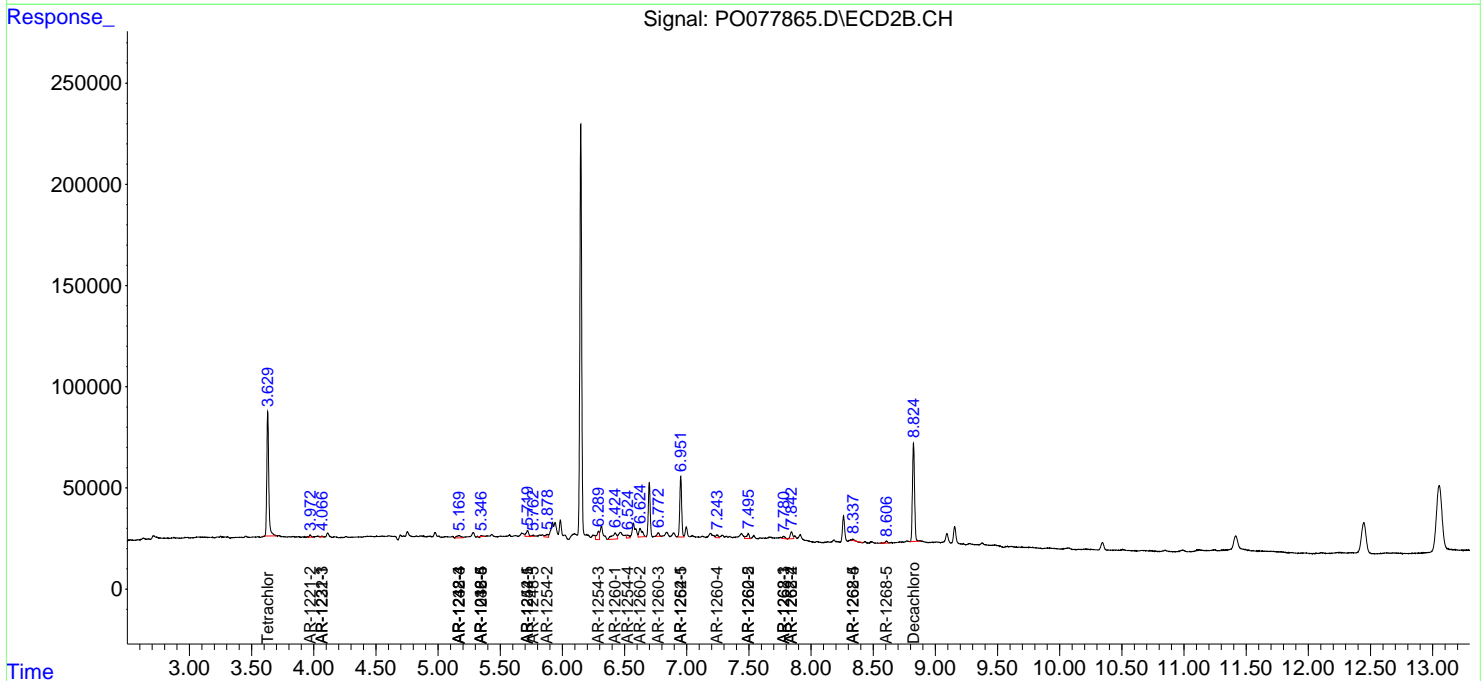
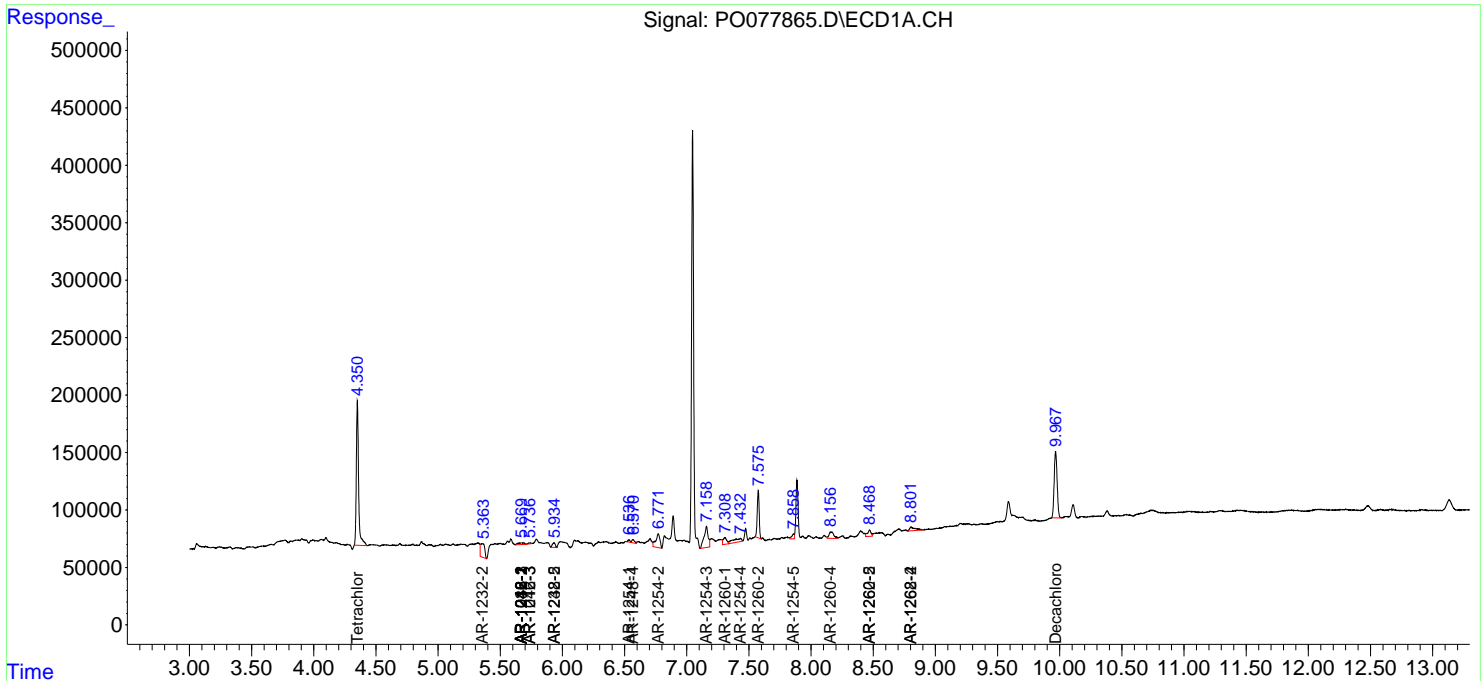
(f)=RT Delta > 1/2 Window (#)=Amounts differ by > 25% (m)=manual int.

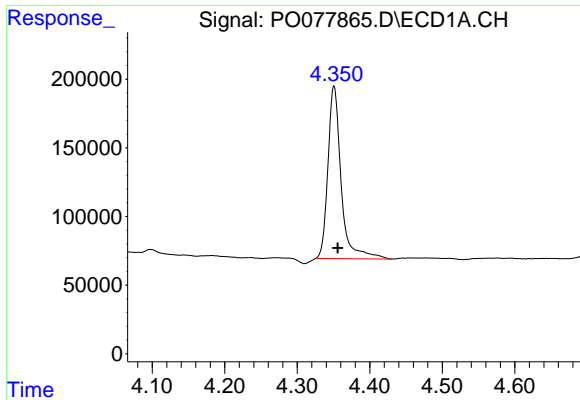
Data Path : Z:\pestpcbsrv\HPCHEM1\ECD_O\Data\P0051721\
 Data File : P0077865.D
 Signal(s) : Signal #1: ECD1A.CH Signal #2: ECD2B.CH
 Acq On : 17 May 2021 10:58
 Operator : DD\AJ
 Sample : M2283-03
 Misc :
 ALS Vial : 7 Sample Multiplier: 1

Instrument :
 ECD_O
 ClientSampled :
 KSB-03(7-9)

Integration File signal 1: autoint1.e
 Integration File signal 2: autoint2.e
 Quant Time: May 17 12:46:32 2021
 Quant Method : Z:\pestpcbsrv\HPCHEM1\ECD_O\methods\P0051321.M
 Quant Title : GC EXTRACTABLES
 QLast Update : Fri May 14 05:52:29 2021
 Response via : Initial Calibration
 Integrator: ChemStation 6890 Scale Mode: Small noise peaks clipped

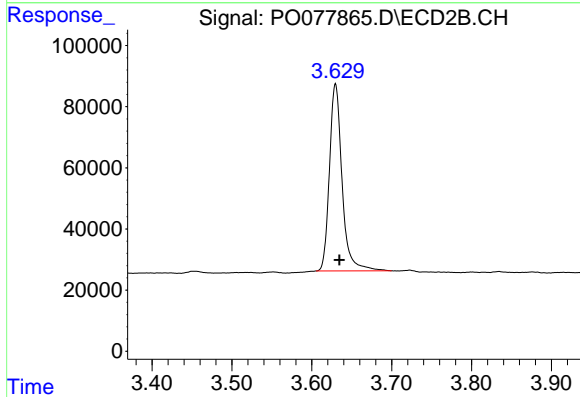
Volume Inj. : 2 µl
 Signal #1 Phase : ZB-MR1 Signal #2 Phase: ZB-MR2
 Signal #1 Info : 30Mx0.32mmx 0.50µ Signal #2 Info : 30M x 0.32mm x 0.25µm



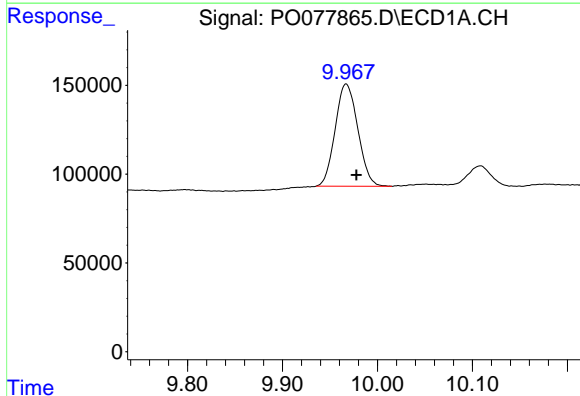


#1 Tetrachloro-m-xylene
 R.T.: 4.351 min
 Delta R.T.: -0.005 min
 Response: 1592337
 Conc: 27.13 ng/ml

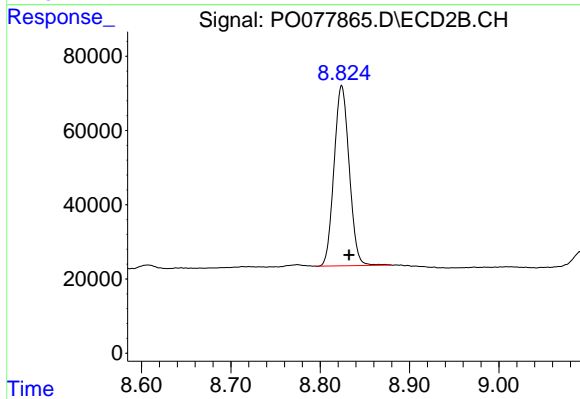
Instrument :
 ECD_O
 ClientSampleId :
 KSB-03(7-9)



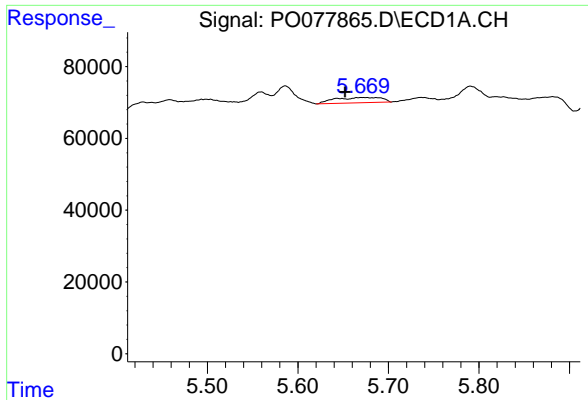
#1 Tetrachloro-m-xylene
 R.T.: 3.630 min
 Delta R.T.: -0.005 min
 Response: 672306
 Conc: 26.42 ng/ml



#2 Decachlorobiphenyl
 R.T.: 9.967 min
 Delta R.T.: -0.011 min
 Response: 954662
 Conc: 23.09 ng/ml



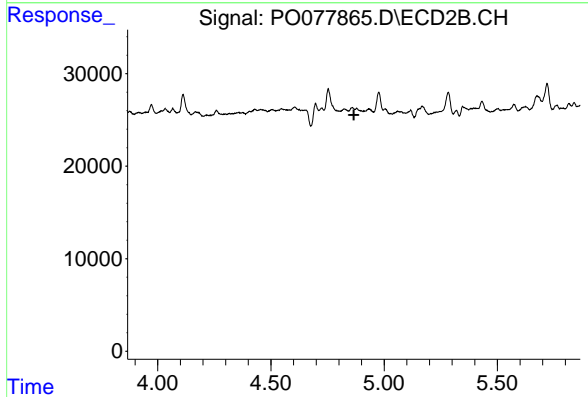
#2 Decachlorobiphenyl
 R.T.: 8.824 min
 Delta R.T.: -0.008 min
 Response: 572831
 Conc: 23.84 ng/ml



#3 AR-1016-1

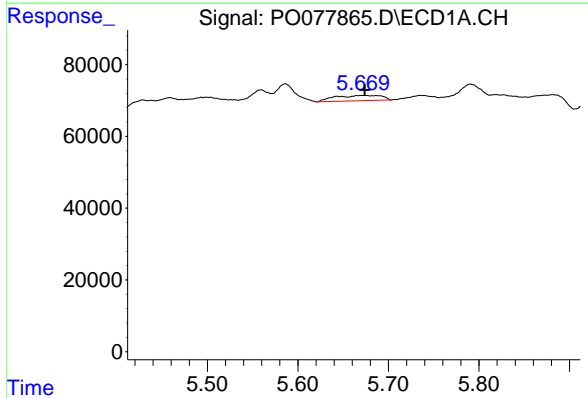
R.T.: 5.671 min
 Delta R.T.: 0.019 min
 Response: 53159
 Conc: 27.34 ng/ml

Instrument :
 ECD_O
 ClientSampleId :
 KSB-03(7-9)



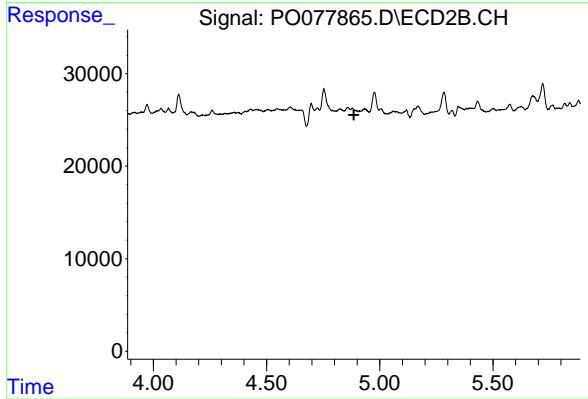
#3 AR-1016-1

R.T.: 0.000 min
 Exp R.T. : 4.866 min
 Response: 0
 Conc: N.D.



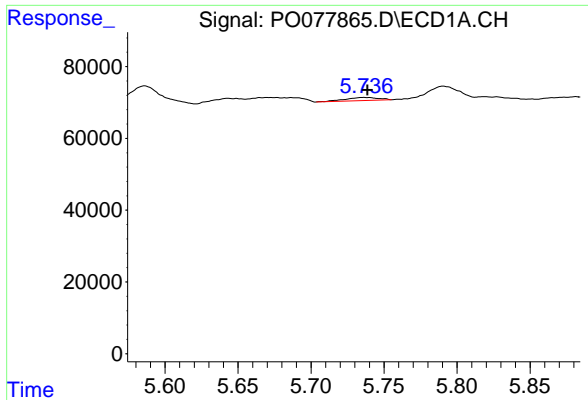
#4 AR-1016-2

R.T.: 5.671 min
 Delta R.T.: -0.003 min
 Response: 53159
 Conc: 18.39 ng/ml



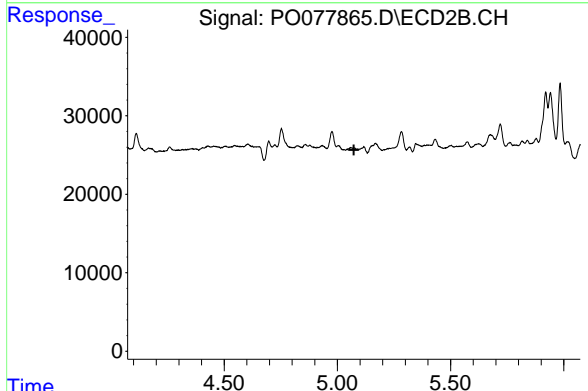
#4 AR-1016-2

R.T.: 0.000 min
 Exp R.T. : 4.886 min
 Response: 0
 Conc: N.D.

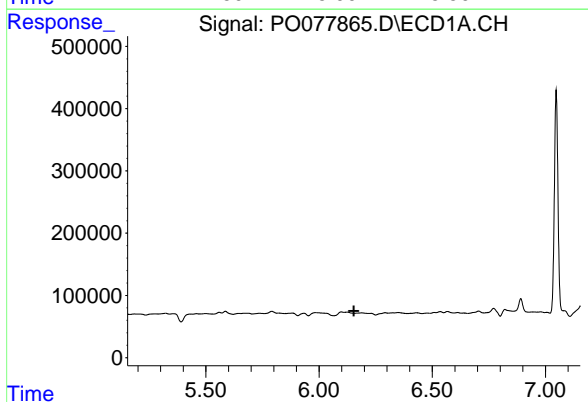


#5 AR-1016-3
 R.T.: 5.736 min
 Delta R.T.: -0.002 min
 Response: 13854
 Conc: 7.74 ng/ml

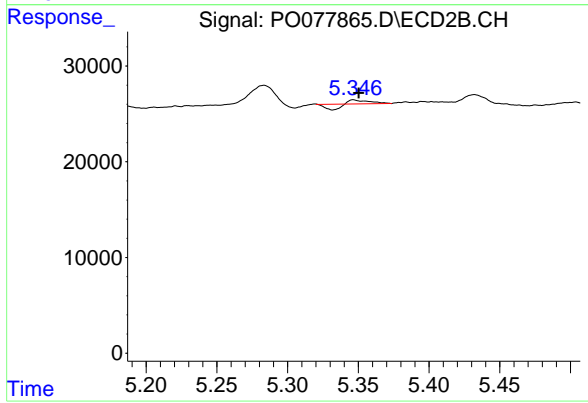
Instrument :
 ECD_O
 ClientSampleId :
 KSB-03(7-9)



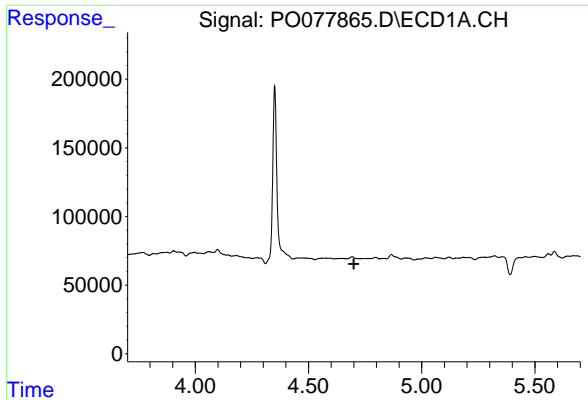
#5 AR-1016-3
 R.T.: 0.000 min
 Exp R.T. : 5.073 min
 Response: 0
 Conc: N.D.



#7 AR-1016-5
 R.T.: 0.000 min
 Exp R.T. : 6.154 min
 Response: 0
 Conc: N.D.



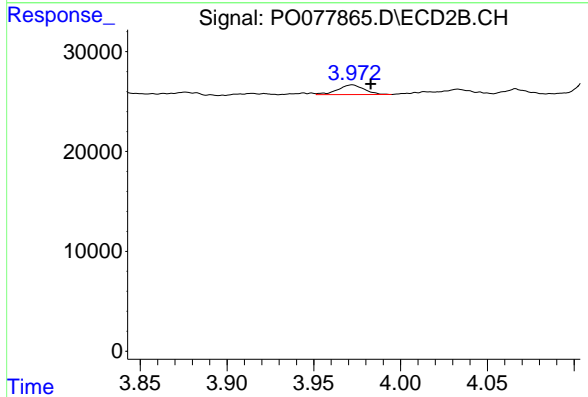
#7 AR-1016-5
 R.T.: 5.346 min
 Delta R.T.: -0.004 min
 Response: 504
 Conc: 0.69 ng/ml



#9 AR-1221-2

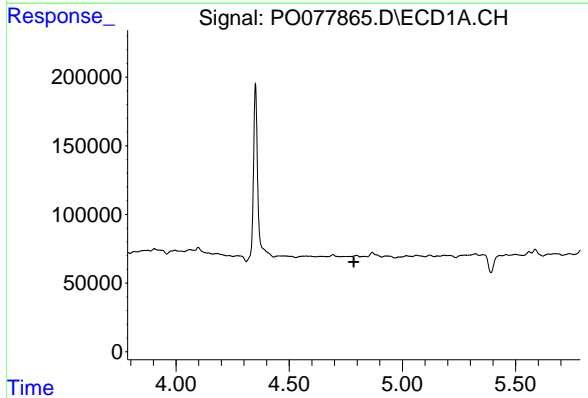
R.T.: 0.000 min
 Exp R.T. : 4.701 min
 Response: 0
 Conc: N.D.

Instrument :
 ECD_O
 ClientSampleId :
 KSB-03(7-9)



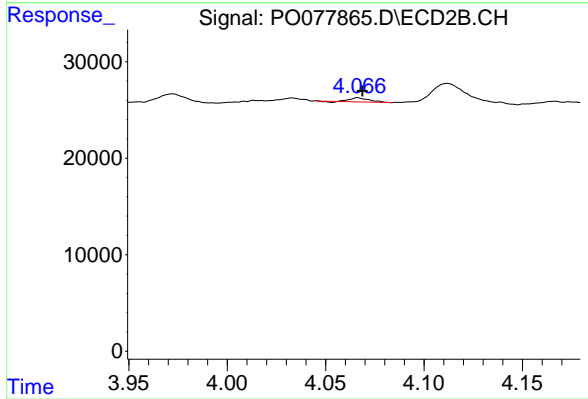
#9 AR-1221-2

R.T.: 3.972 min
 Delta R.T.: -0.010 min
 Response: 10278
 Conc: 43.05 ng/ml



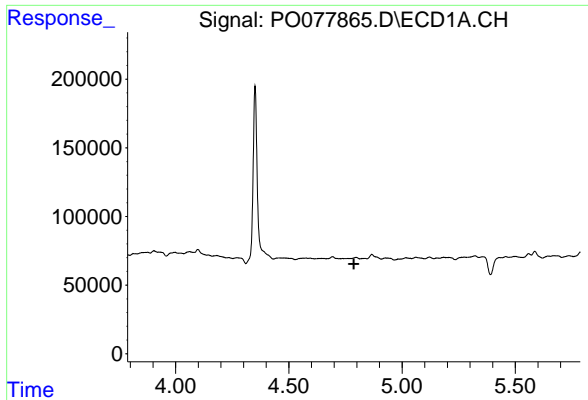
#10 AR-1221-3

R.T.: 0.000 min
 Exp R.T. : 4.785 min
 Response: 0
 Conc: N.D.



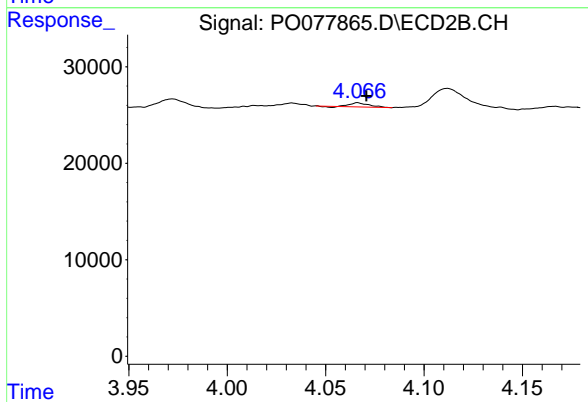
#10 AR-1221-3

R.T.: 4.066 min
 Delta R.T.: -0.002 min
 Response: 2898
 Conc: 3.70 ng/ml

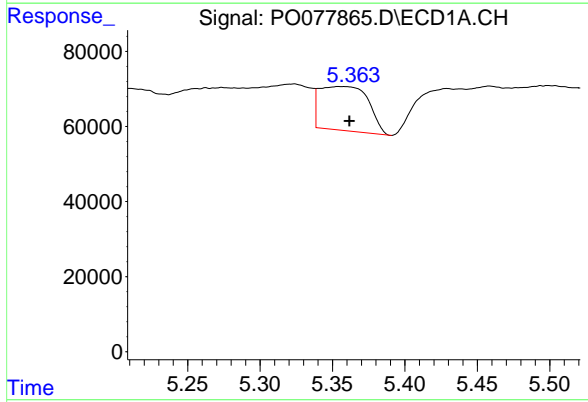


#11 AR-1232-1
 R.T.: 0.000 min
 Exp R.T.: 4.787 min
 Response: 0
 Conc: N.D.

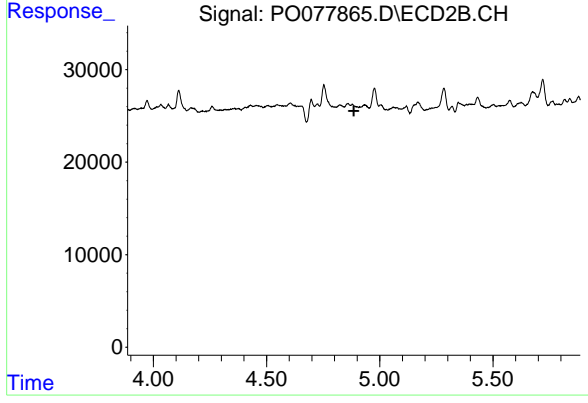
Instrument :
 ECD_O
 ClientSampleId :
 KSB-03(7-9)



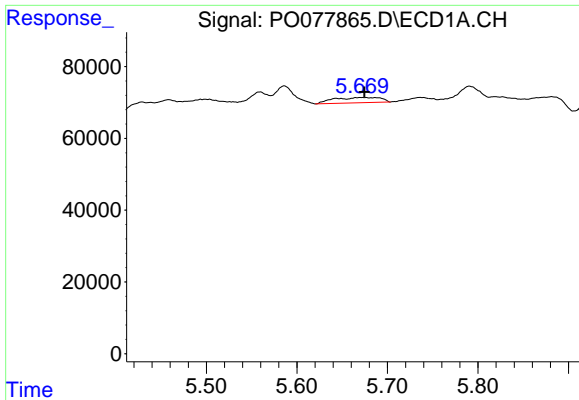
#11 AR-1232-1
 R.T.: 4.066 min
 Delta R.T.: -0.004 min
 Response: 2898
 Conc: 5.06 ng/ml



#12 AR-1232-2
 R.T.: 5.355 min
 Delta R.T.: -0.007 min
 Response: 274800
 Conc: 412.20 ng/ml

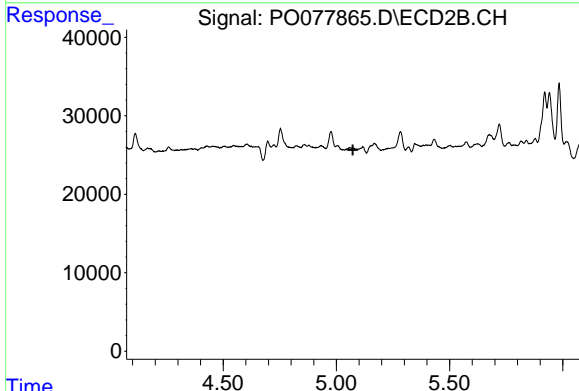


#12 AR-1232-2
 R.T.: 0.000 min
 Exp R.T.: 4.886 min
 Response: 0
 Conc: N.D.

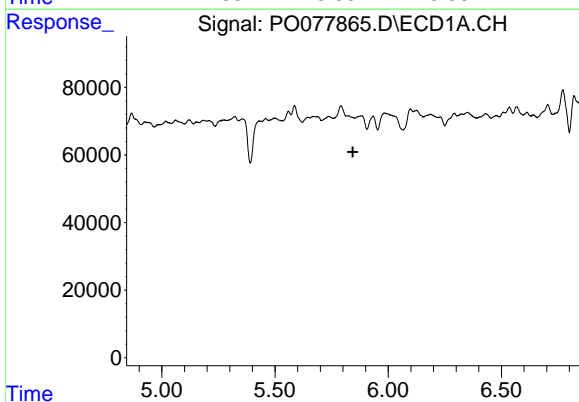


#13 AR-1232-3
 R.T.: 5.671 min
 Delta R.T.: -0.004 min
 Response: 53159
 Conc: 44.17 ng/ml

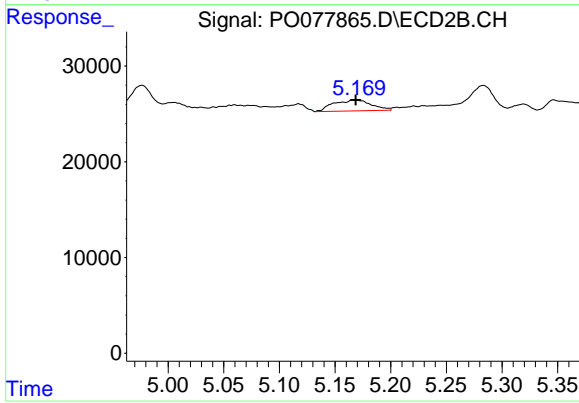
Instrument :
 ECD_O
 ClientSampleId :
 KSB-03(7-9)



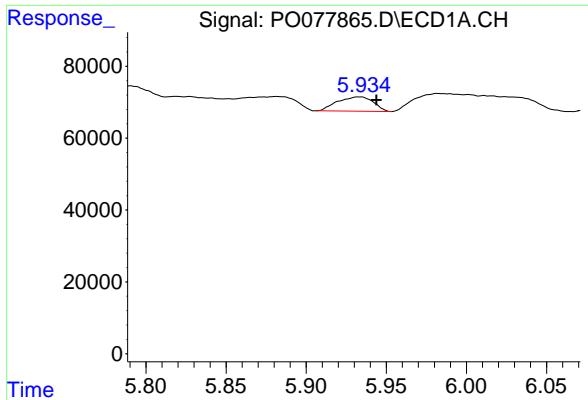
#13 AR-1232-3
 R.T.: 0.000 min
 Exp R.T. : 5.073 min
 Response: 0
 Conc: N.D.



#14 AR-1232-4
 R.T.: 0.000 min
 Exp R.T. : 5.844 min
 Response: 0
 Conc: N.D.

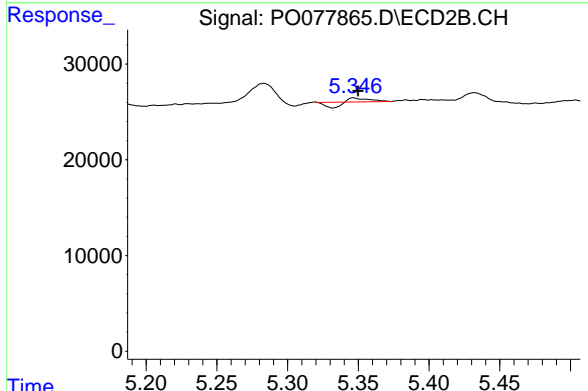


#14 AR-1232-4
 R.T.: 5.170 min
 Delta R.T.: 0.001 min
 Response: 27238
 Conc: 102.14 ng/ml

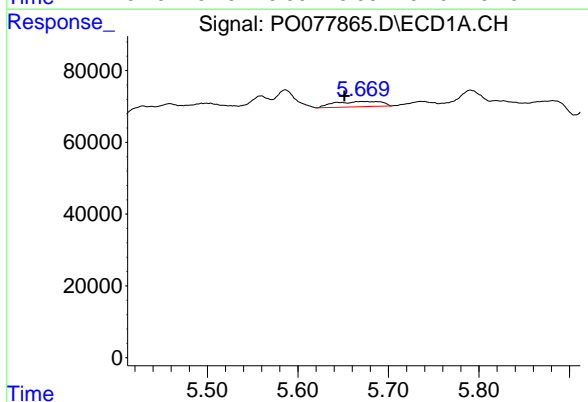


#15 AR-1232-5
 R.T.: 5.933 min
 Delta R.T.: -0.011 min
 Response: 61954
 Conc: 155.99 ng/ml

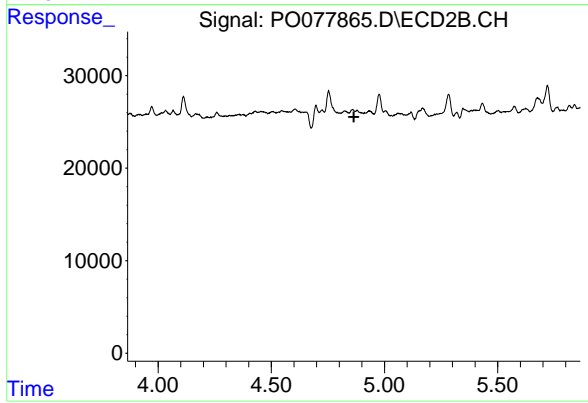
Instrument :
 ECD_O
ClientSampled :
 KSB-03(7-9)



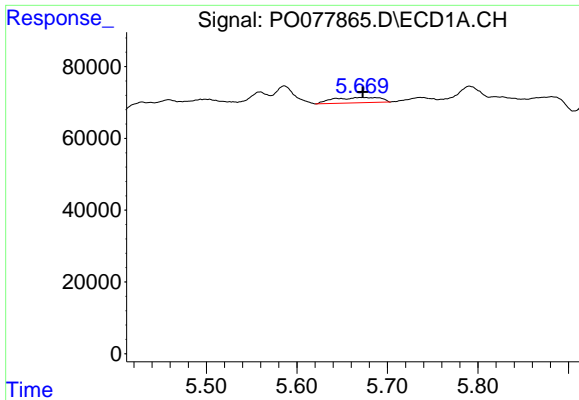
#15 AR-1232-5
 R.T.: 5.346 min
 Delta R.T.: -0.003 min
 Response: 504
 Conc: 1.80 ng/ml



#16 AR-1242-1
 R.T.: 5.671 min
 Delta R.T.: 0.019 min
 Response: 53159
 Conc: 35.47 ng/ml



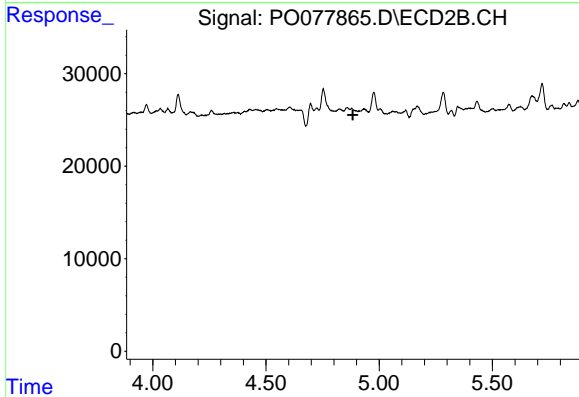
#16 AR-1242-1
 R.T.: 0.000 min
 Exp R.T. : 4.865 min
 Response: 0
 Conc: N.D.



#17 AR-1242-2

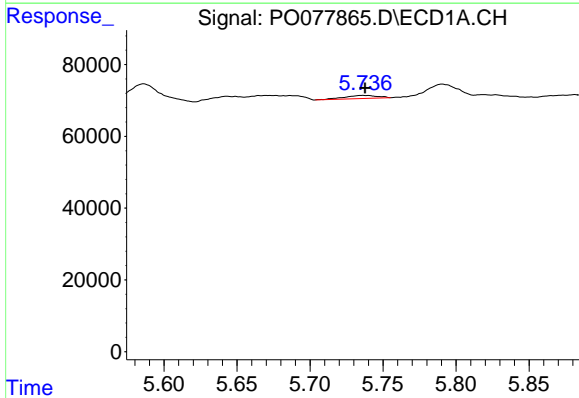
R.T.: 5.671 min
 Delta R.T.: -0.002 min
 Response: 53159
 Conc: 23.56 ng/ml

Instrument :
 ECD_O
 ClientSampleId :
 KSB-03(7-9)



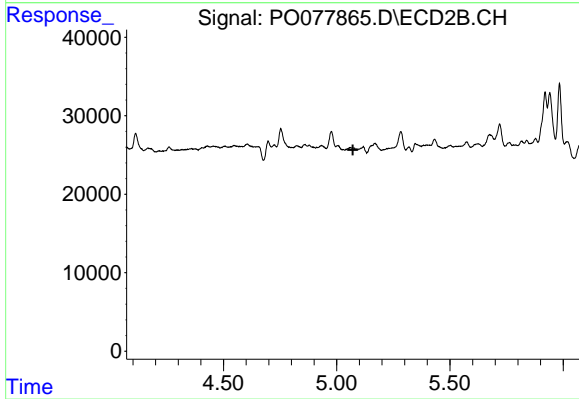
#17 AR-1242-2

R.T.: 0.000 min
 Exp R.T. : 4.884 min
 Response: 0
 Conc: N.D.



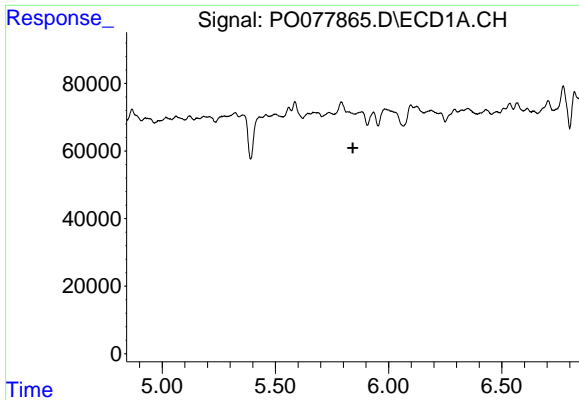
#18 AR-1242-3

R.T.: 5.736 min
 Delta R.T.: -0.001 min
 Response: 13854
 Conc: 10.00 ng/ml



#18 AR-1242-3

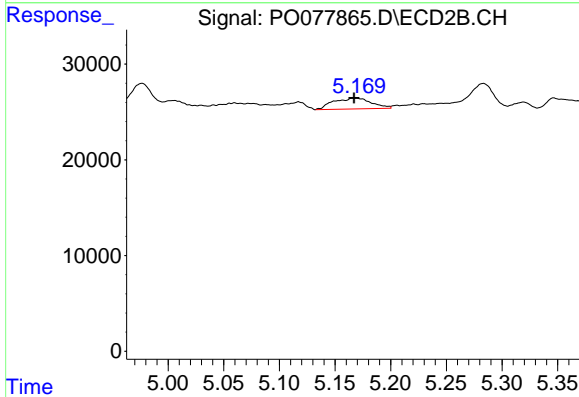
R.T.: 0.000 min
 Exp R.T. : 5.071 min
 Response: 0
 Conc: N.D.



#19 AR-1242-4

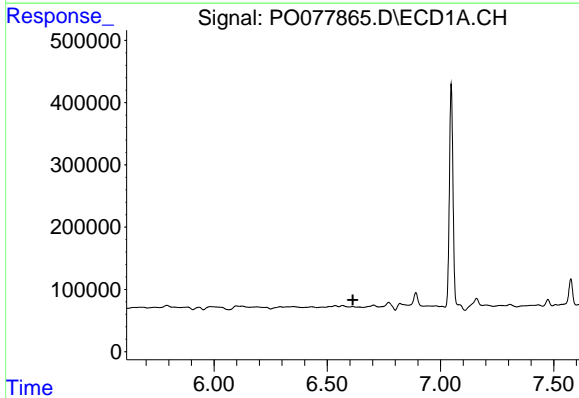
R.T.: 0.000 min
 Exp R.T. : 5.842 min
 Response: 0
 Conc: N.D.

Instrument :
 ECD_O
 ClientSampleId :
 KSB-03(7-9)



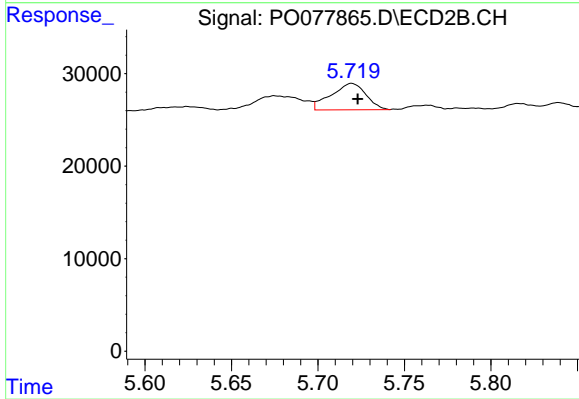
#19 AR-1242-4

R.T.: 5.170 min
 Delta R.T.: 0.002 min
 Response: 27238
 Conc: 48.13 ng/ml



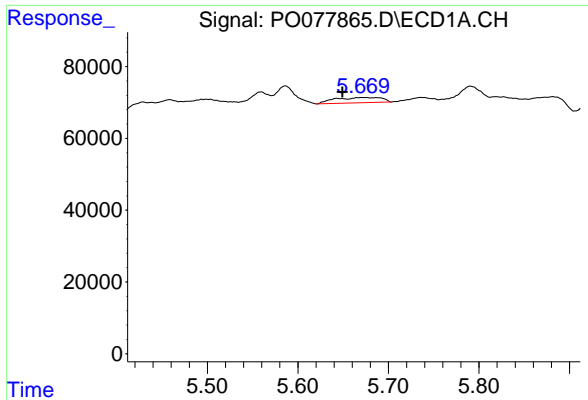
#20 AR-1242-5

R.T.: 0.000 min
 Exp R.T. : 6.613 min
 Response: 0
 Conc: N.D.



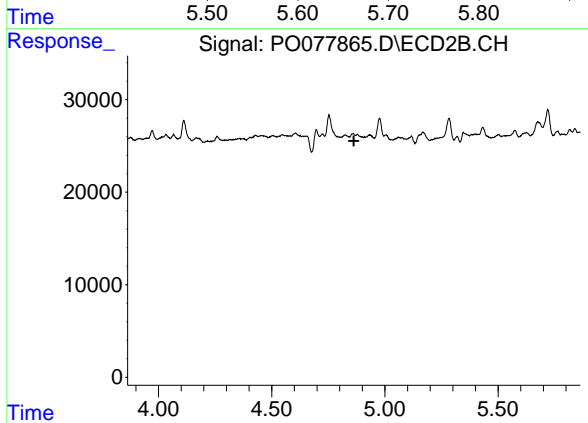
#20 AR-1242-5

R.T.: 5.719 min
 Delta R.T.: -0.004 min
 Response: 39879
 Conc: 57.99 ng/ml

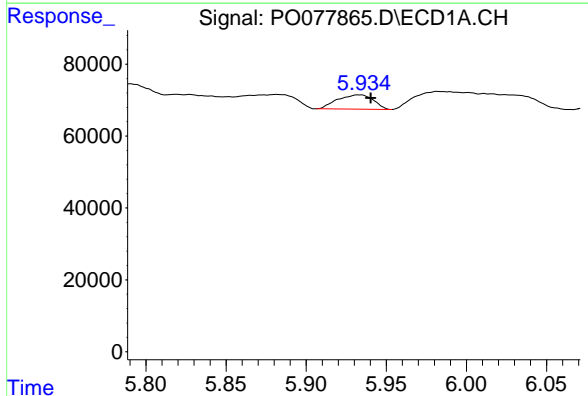


#21 AR-1248-1
 R.T.: 5.671 min
 Delta R.T.: 0.021 min
 Response: 53159
 Conc: 46.33 ng/ml

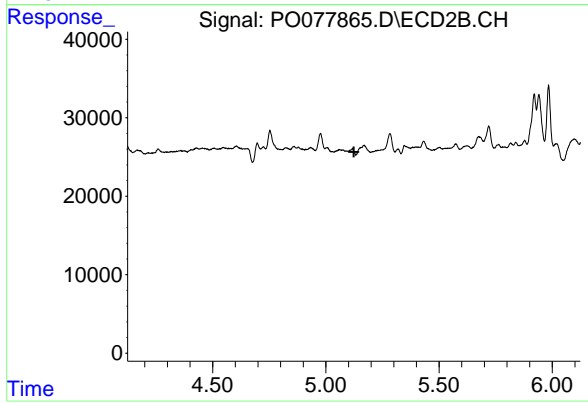
Instrument :
 ECD_O
 ClientSampleId :
 KSB-03(7-9)



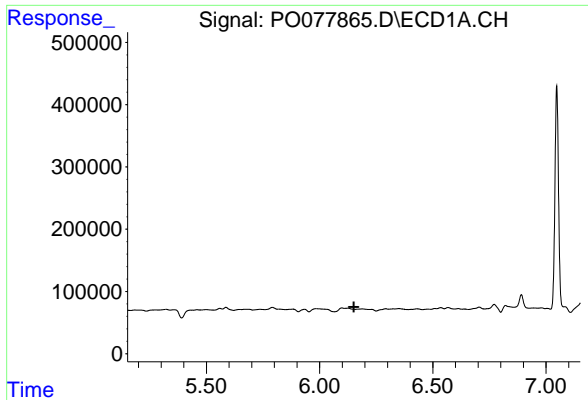
#21 AR-1248-1
 R.T.: 0.000 min
 Exp R.T. : 4.863 min
 Response: 0
 Conc: N.D.



#22 AR-1248-2
 R.T.: 5.933 min
 Delta R.T.: -0.007 min
 Response: 61954
 Conc: 39.02 ng/ml



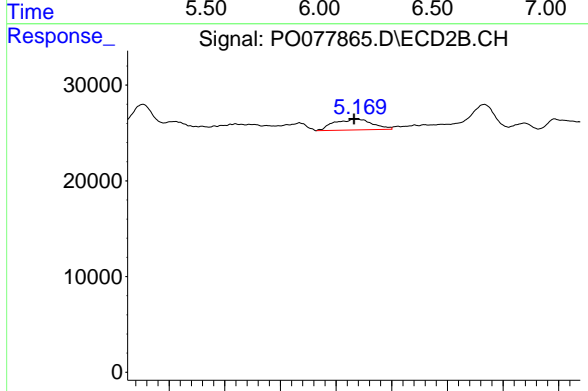
#22 AR-1248-2
 R.T.: 0.000 min
 Exp R.T. : 5.124 min
 Response: 0
 Conc: N.D.



#23 AR-1248-3

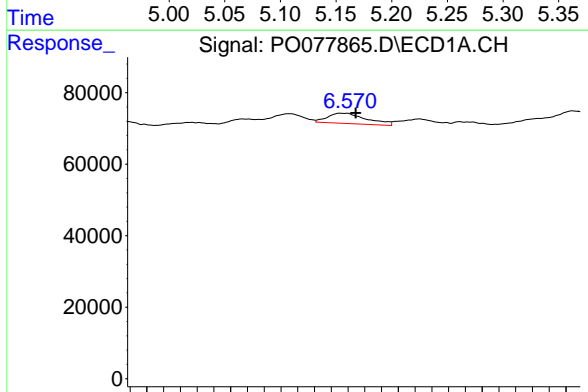
R.T.: 0.000 min
 Exp R.T.: 6.152 min
 Response: 0
 Conc: N.D.

Instrument :
 ECD_O
 ClientSampleId :
 KSB-03(7-9)



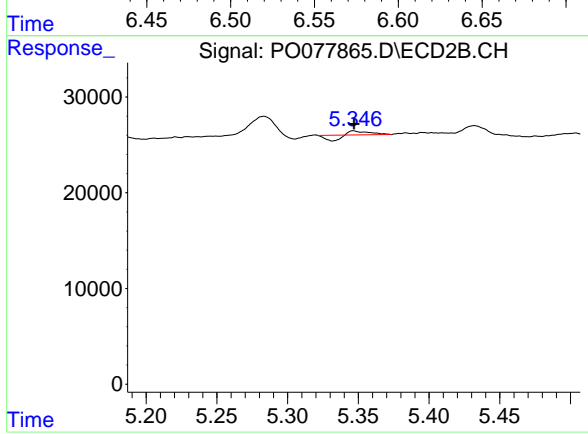
#23 AR-1248-3

R.T.: 5.170 min
 Delta R.T.: 0.003 min
 Response: 27238
 Conc: 33.75 ng/ml



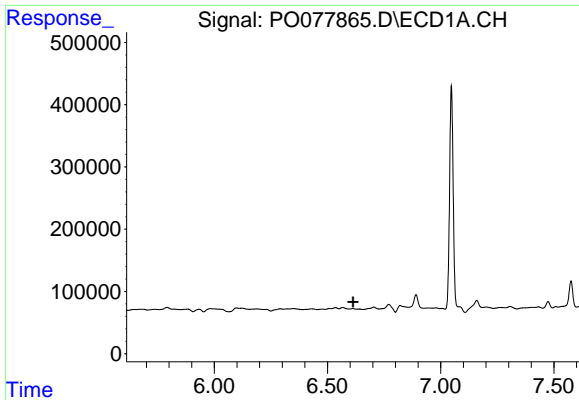
#24 AR-1248-4

R.T.: 6.566 min
 Delta R.T.: -0.008 min
 Response: 46894
 Conc: 23.94 ng/ml



#24 AR-1248-4

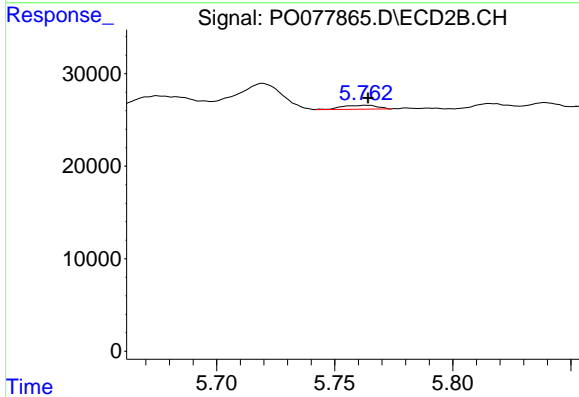
R.T.: 5.346 min
 Delta R.T.: 0.000 min
 Response: 504
 Conc: 0.53 ng/ml



#25 AR-1248-5

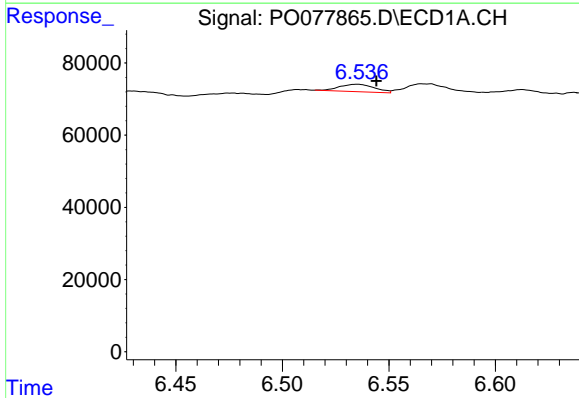
R.T.: 0.000 min
 Exp R.T.: 6.613 min
 Response: 0
 Conc: N.D.

Instrument :
 ECD_O
 ClientSampleId :
 KSB-03(7-9)



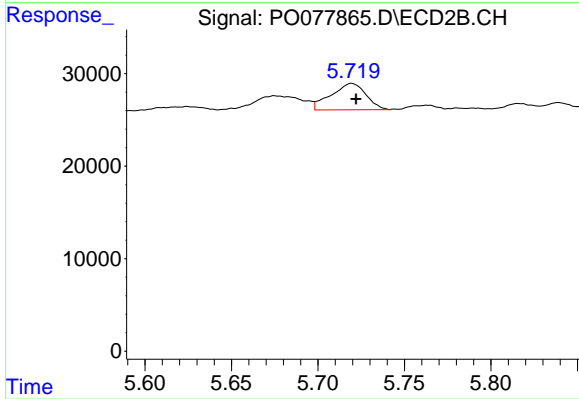
#25 AR-1248-5

R.T.: 5.763 min
 Delta R.T.: -0.001 min
 Response: 4369
 Conc: 4.73 ng/ml



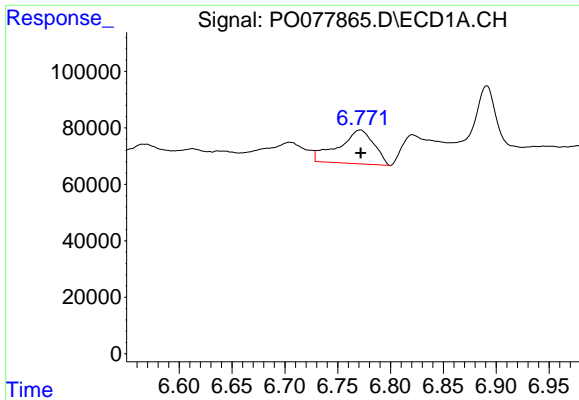
#26 AR-1254-1

R.T.: 6.535 min
 Delta R.T.: -0.009 min
 Response: 23589
 Conc: 11.12 ng/ml



#26 AR-1254-1

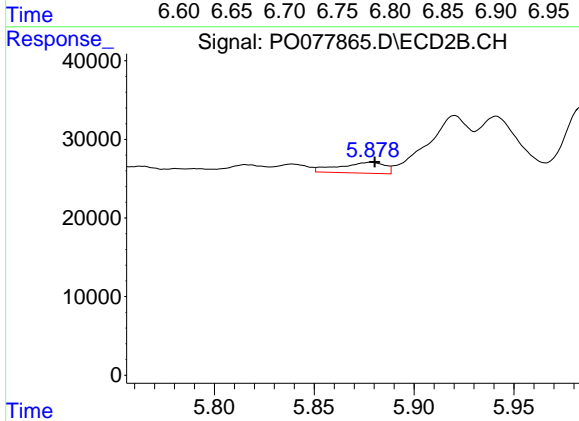
R.T.: 5.719 min
 Delta R.T.: -0.003 min
 Response: 39879
 Conc: 27.10 ng/ml



#27 AR-1254-2

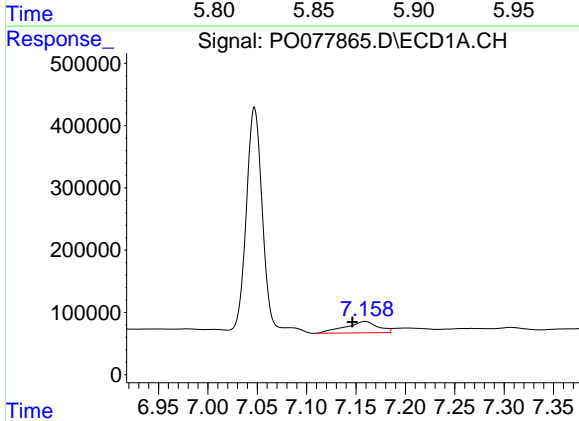
R.T.: 6.771 min
 Delta R.T.: 0.000 min
 Response: 278688
 Conc: 85.73 ng/ml

Instrument :
 ECD_O
ClientSampled :
 KSB-03(7-9)



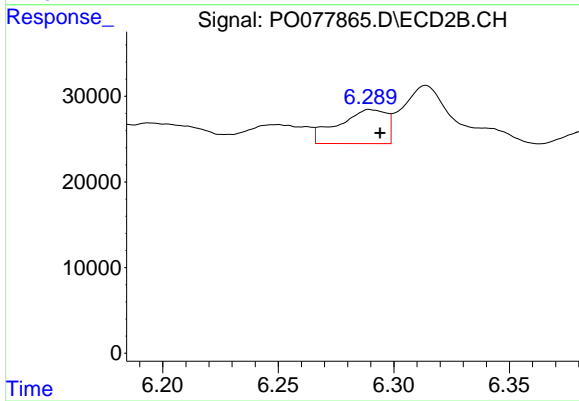
#27 AR-1254-2

R.T.: 5.878 min
 Delta R.T.: -0.002 min
 Response: 22096
 Conc: 16.37 ng/ml



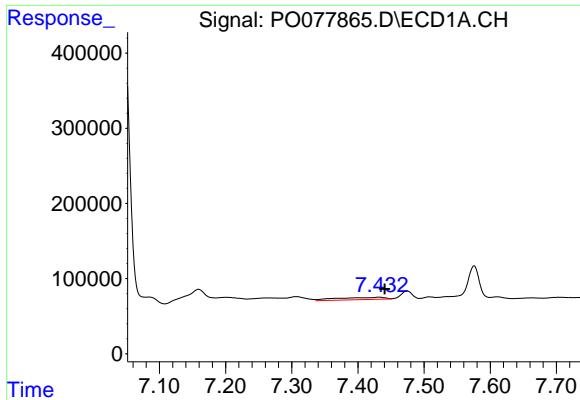
#28 AR-1254-3

R.T.: 7.159 min
 Delta R.T.: 0.012 min
 Response: 422007
 Conc: 128.02 ng/ml



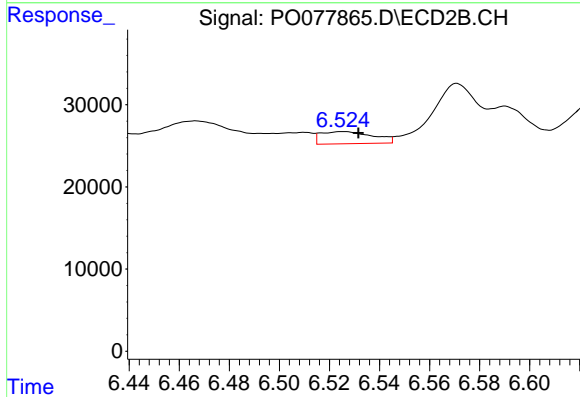
#28 AR-1254-3

R.T.: 6.290 min
 Delta R.T.: -0.004 min
 Response: 57814
 Conc: 28.54 ng/ml

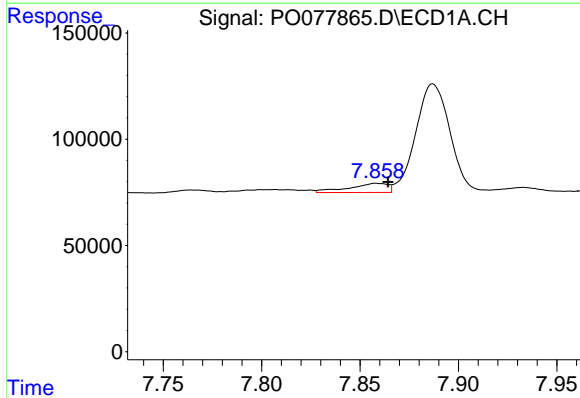


#29 AR-1254-4
 R.T.: 7.432 min
 Delta R.T.: -0.008 min
 Response: 150585
 Conc: 64.85 ng/ml

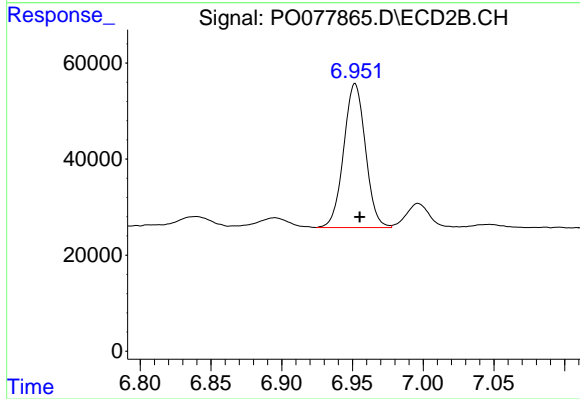
Instrument :
 ECD_O
 ClientSampled :
 KSB-03(7-9)



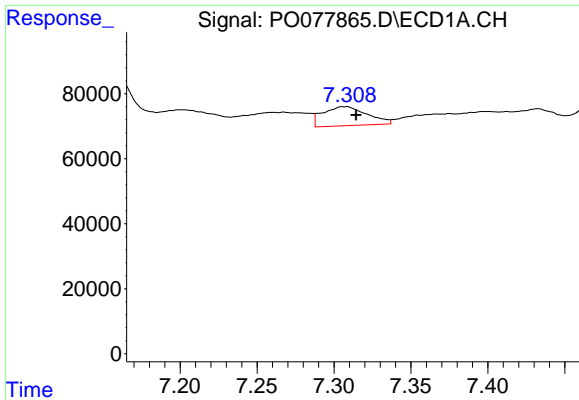
#29 AR-1254-4
 R.T.: 6.526 min
 Delta R.T.: -0.006 min
 Response: 21366
 Conc: 17.07 ng/ml



#30 AR-1254-5
 R.T.: 7.858 min
 Delta R.T.: -0.006 min
 Response: 58804
 Conc: 22.53 ng/ml

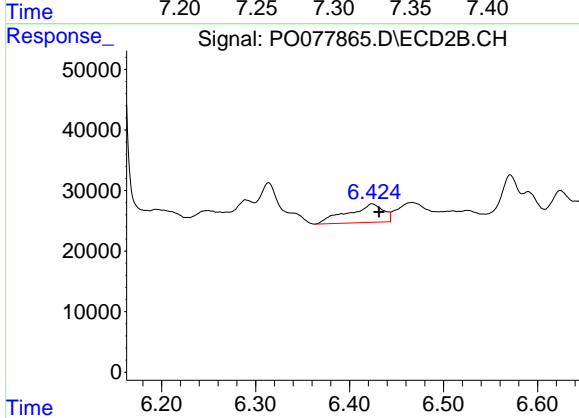


#30 AR-1254-5
 R.T.: 6.952 min
 Delta R.T.: -0.003 min
 Response: 320615
 Conc: 169.18 ng/ml

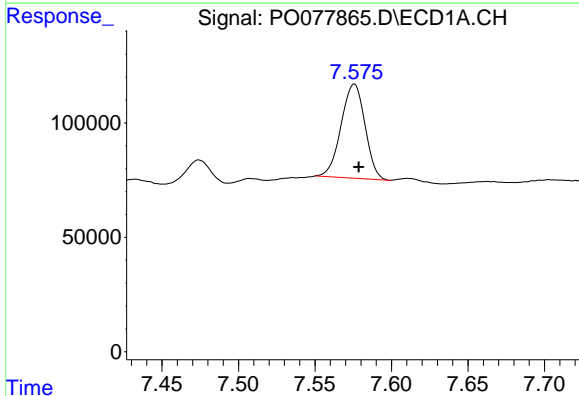


#31 AR-1260-1
 R.T.: 7.307 min
 Delta R.T.: -0.007 min
 Response: 117537
 Conc: 46.23 ng/ml

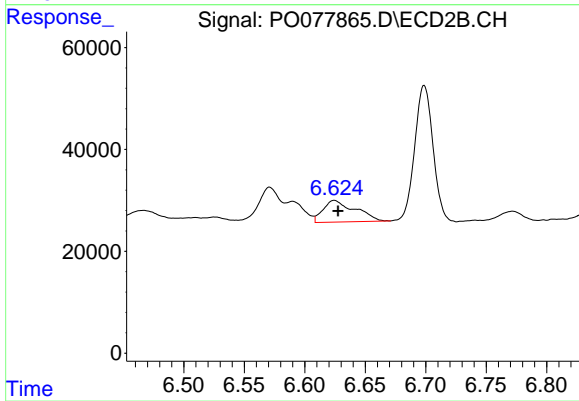
Instrument :
 ECD_O
 ClientSampleId :
 KSB-03(7-9)



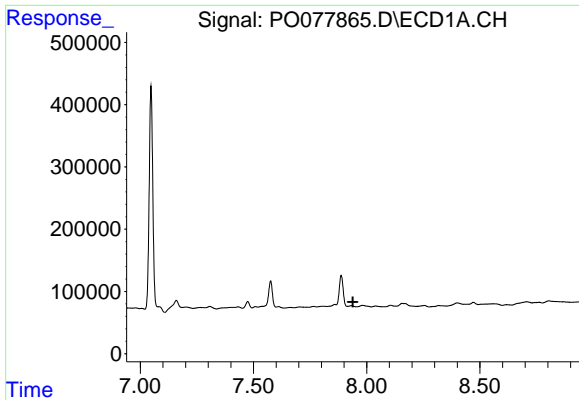
#31 AR-1260-1
 R.T.: 6.424 min
 Delta R.T.: -0.007 min
 Response: 80398
 Conc: 54.57 ng/ml



#32 AR-1260-2
 R.T.: 7.576 min
 Delta R.T.: -0.003 min
 Response: 448736
 Conc: 160.68 ng/ml



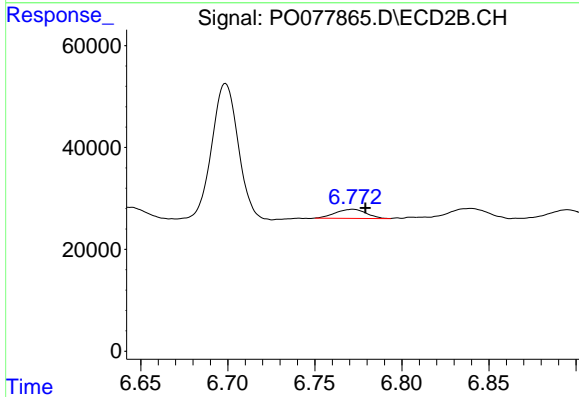
#32 AR-1260-2
 R.T.: 6.624 min
 Delta R.T.: -0.003 min
 Response: 78622
 Conc: 45.33 ng/ml



#33 AR-1260-3

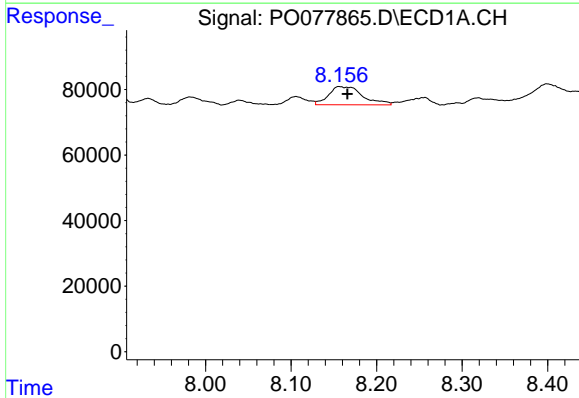
R.T.: 0.000 min
 Exp R.T.: 7.939 min
 Response: 0
 Conc: N.D.

Instrument :
 ECD_O
 ClientSampleId :
 KSB-03(7-9)



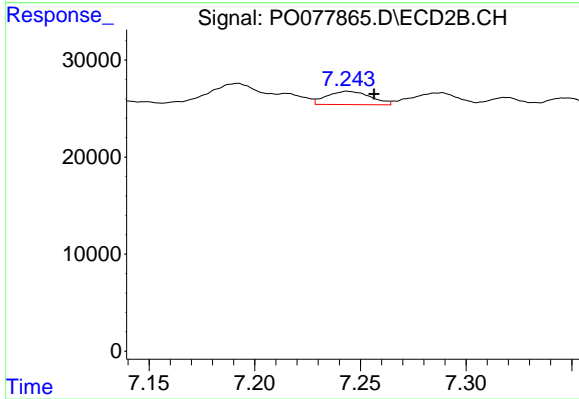
#33 AR-1260-3

R.T.: 6.772 min
 Delta R.T.: -0.007 min
 Response: 21938
 Conc: 13.40 ng/ml



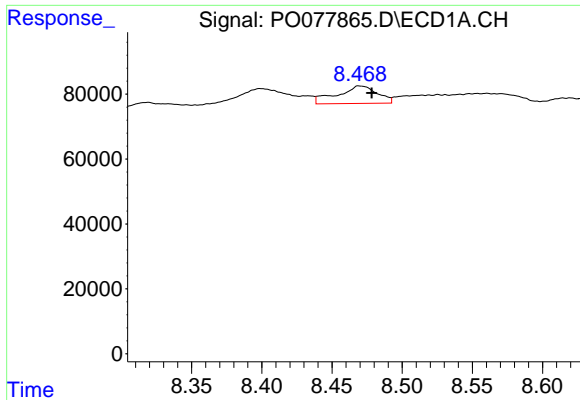
#34 AR-1260-4

R.T.: 8.156 min
 Delta R.T.: -0.010 min
 Response: 153734
 Conc: 70.40 ng/ml



#34 AR-1260-4

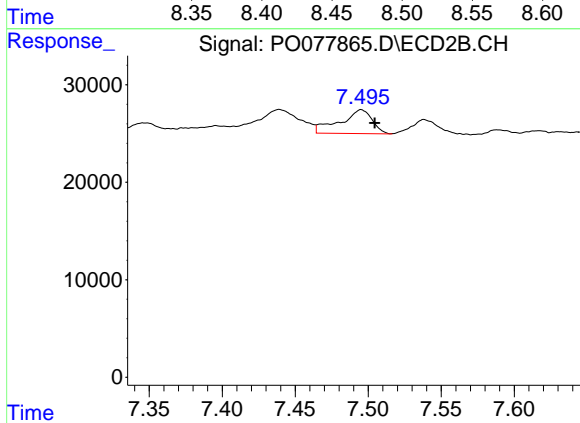
R.T.: 7.244 min
 Delta R.T.: -0.012 min
 Response: 19638
 Conc: 16.23 ng/ml



#35 AR-1260-5

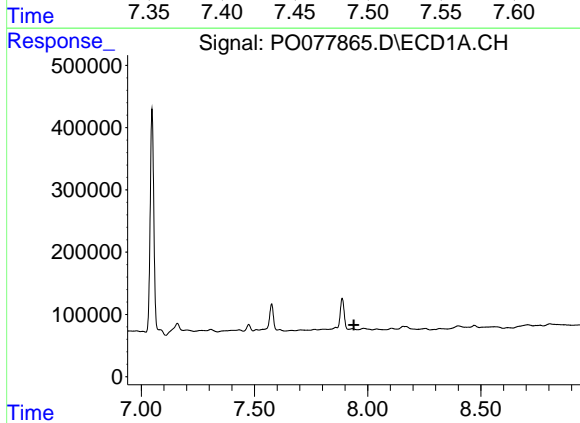
R.T.: 8.470 min
 Delta R.T.: -0.009 min
 Response: 107637
 Conc: 24.88 ng/ml

Instrument :
 ECD_O
ClientSampled :
 KSB-03(7-9)



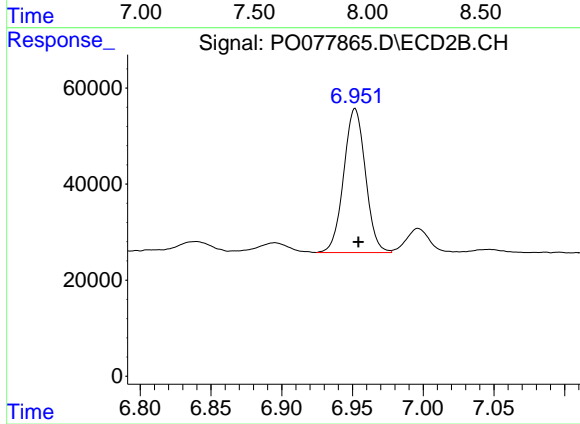
#35 AR-1260-5

R.T.: 7.495 min
 Delta R.T.: -0.009 min
 Response: 37583
 Conc: 13.22 ng/ml



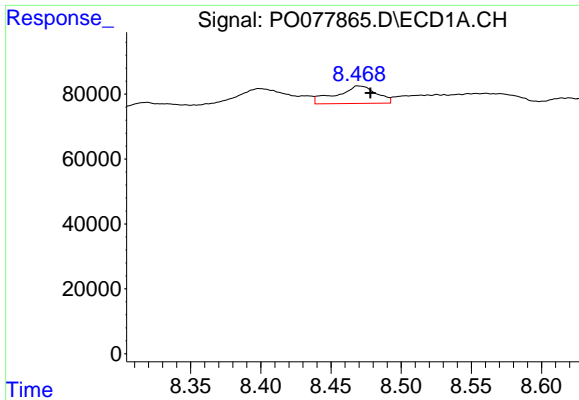
#36 AR-1262-1

R.T.: 0.000 min
 Exp R.T. : 7.939 min
 Response: 0
 Conc: N.D.



#36 AR-1262-1

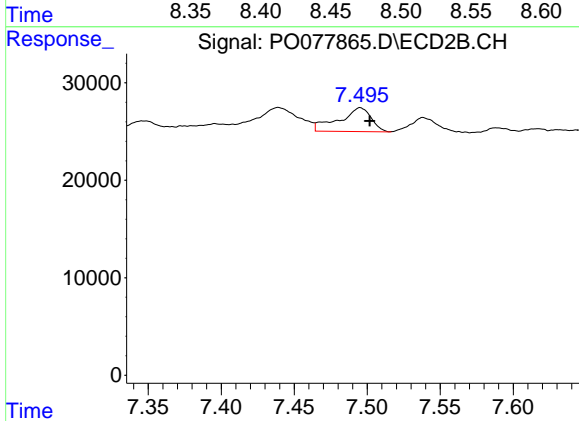
R.T.: 6.952 min
 Delta R.T.: -0.002 min
 Response: 320615
 Conc: 324.25 ng/ml



#37 AR-1262-2

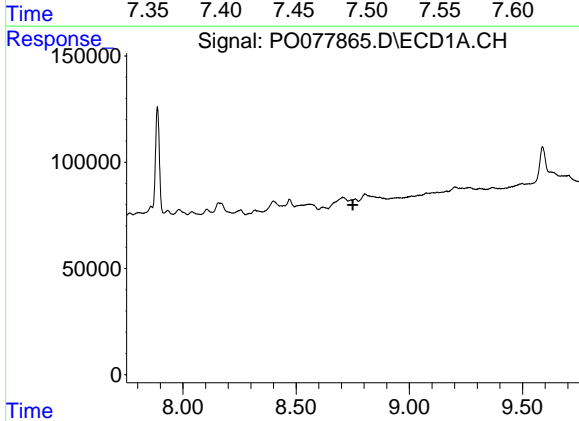
R.T.: 8.470 min
 Delta R.T.: -0.008 min
 Response: 107637
 Conc: 20.94 ng/ml

Instrument :
 ECD_O
 ClientSampleId :
 KSB-03(7-9)



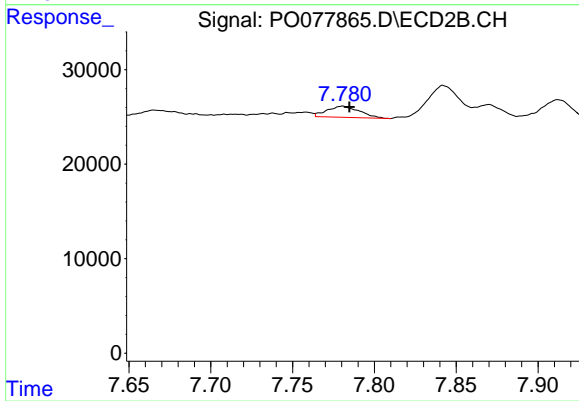
#37 AR-1262-2

R.T.: 7.495 min
 Delta R.T.: -0.006 min
 Response: 37583
 Conc: 11.29 ng/ml



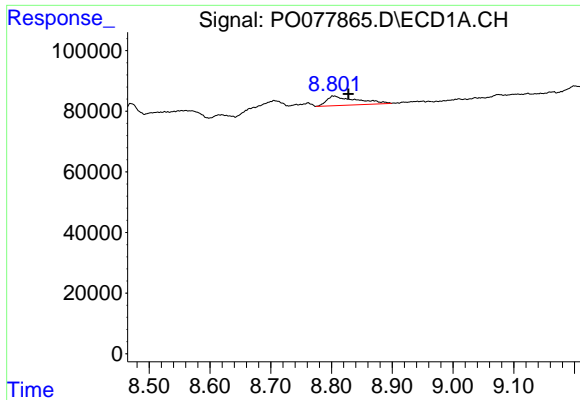
#38 AR-1262-3

R.T.: 0.000 min
 Exp R.T. : 8.751 min
 Response: 0
 Conc: N.D.



#38 AR-1262-3

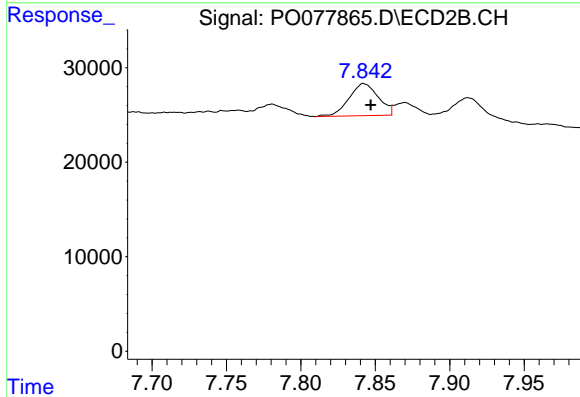
R.T.: 7.781 min
 Delta R.T.: -0.004 min
 Response: 16303
 Conc: 11.81 ng/ml



#39 AR-1262-4

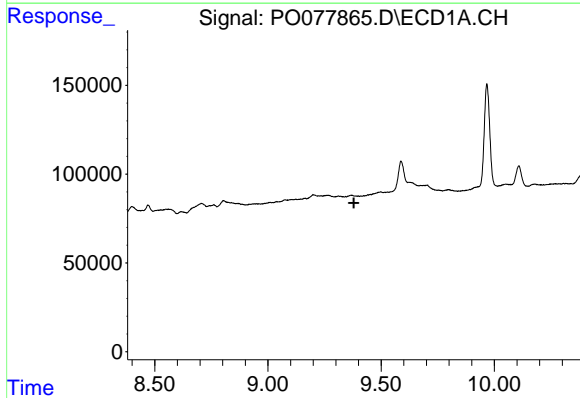
R.T.: 8.803 min
 Delta R.T.: -0.025 min
 Response: 107075
 Conc: 68.24 ng/ml

Instrument :
 ECD_O
 ClientSampled :
 KSB-03(7-9)



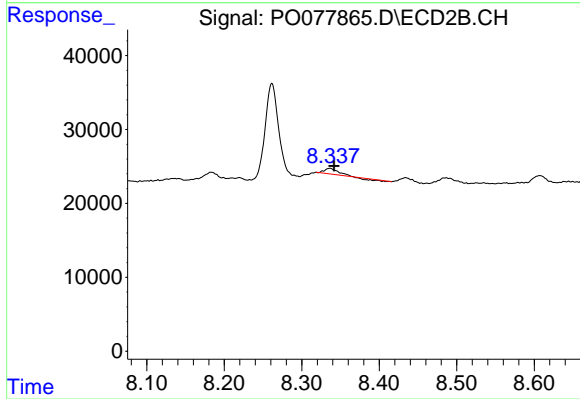
#39 AR-1262-4

R.T.: 7.842 min
 Delta R.T.: -0.005 min
 Response: 46753
 Conc: 18.74 ng/ml



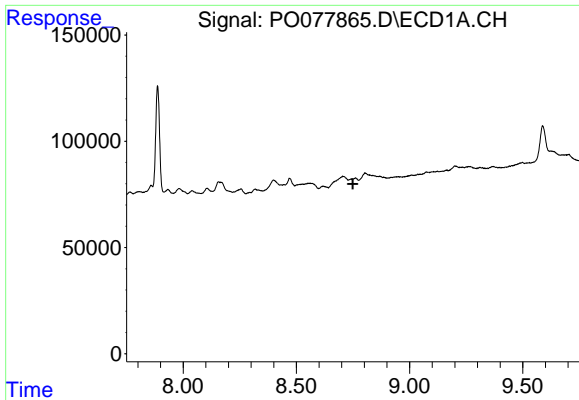
#40 AR-1262-5

R.T.: 0.000 min
 Exp R.T. : 9.380 min
 Response: 0
 Conc: N.D.



#40 AR-1262-5

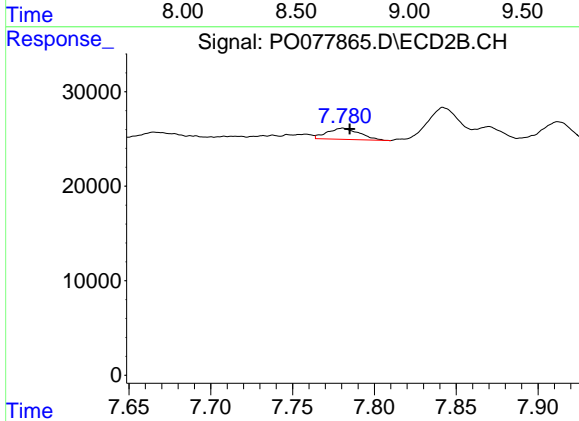
R.T.: 8.336 min
 Delta R.T.: -0.005 min
 Response: 7492
 Conc: 6.45 ng/ml



#41 AR-1268-1

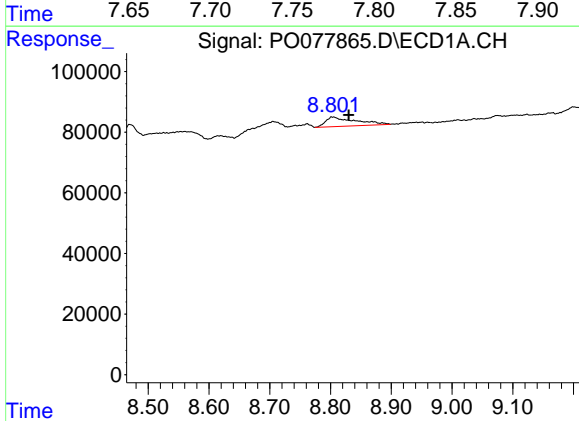
R.T.: 0.000 min
 Exp R.T.: 8.750 min
 Response: 0
 Conc: N.D.

Instrument :
 ECD_O
 ClientSampleId :
 KSB-03(7-9)



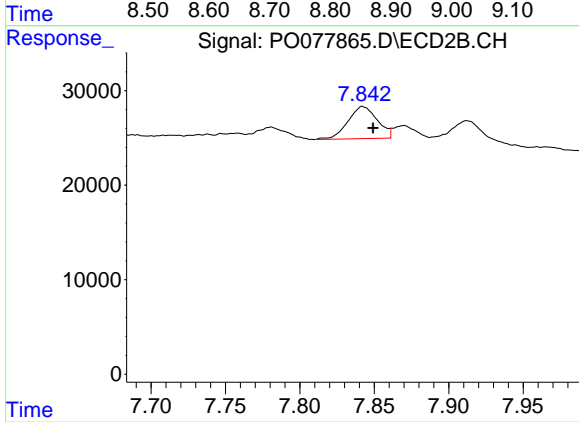
#41 AR-1268-1

R.T.: 7.781 min
 Delta R.T.: -0.004 min
 Response: 16303
 Conc: 4.49 ng/ml



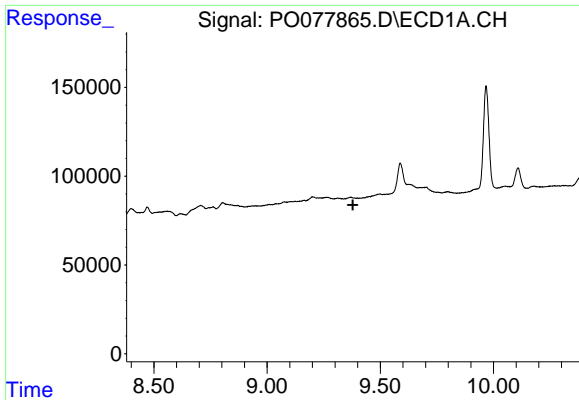
#42 AR-1268-2

R.T.: 8.803 min
 Delta R.T.: -0.027 min
 Response: 107075
 Conc: 19.40 ng/ml



#42 AR-1268-2

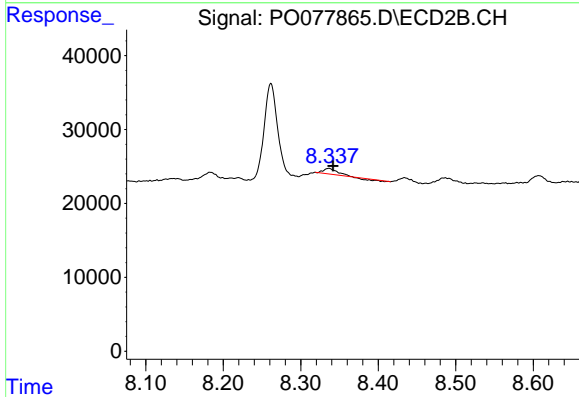
R.T.: 7.842 min
 Delta R.T.: -0.007 min
 Response: 46753
 Conc: 14.18 ng/ml



#44 AR-1268-4

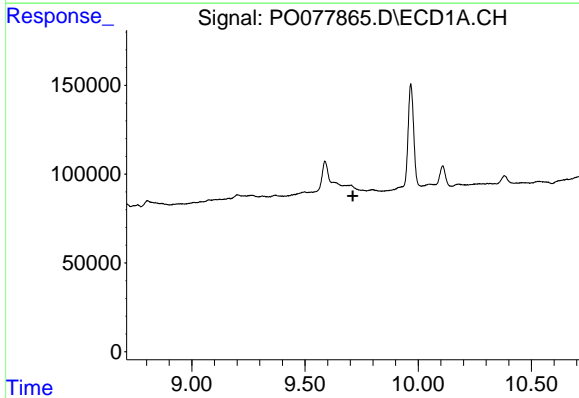
R.T.: 0.000 min
 Exp R.T. : 9.379 min
 Response: 0
 Conc: N.D.

Instrument :
 ECD_O
 ClientSampleId :
 KSB-03(7-9)



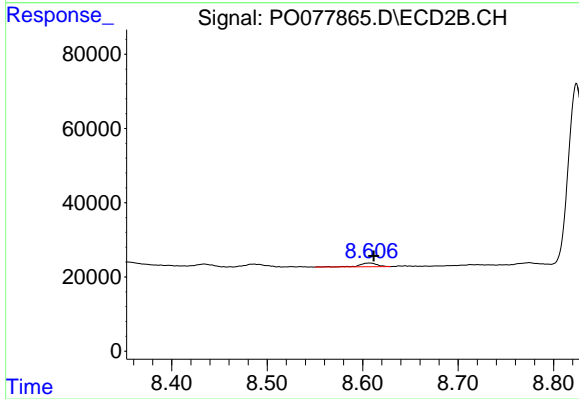
#44 AR-1268-4

R.T.: 8.336 min
 Delta R.T.: -0.006 min
 Response: 7492
 Conc: 6.13 ng/ml



#45 AR-1268-5

R.T.: 0.000 min
 Exp R.T. : 9.711 min
 Response: 0
 Conc: N.D.



#45 AR-1268-5

R.T.: 8.607 min
 Delta R.T.: -0.004 min
 Response: 13433
 Conc: 1.56 ng/ml