

Data Path : Z:\pestpcbsrv\HPCHEM1\ECD_0\Data\P0051921\
 Data File : P0077994.D
 Signal(s) : Signal #1: ECD1A.CH Signal #2: ECD2B.CH
 Acq On : 19 May 2021 15:13
 Operator : DD\AJ
 Sample : AR1248CCC500
 Misc :
 ALS Vial : 6 Sample Multiplier: 1

Instrument :
 ECD_O
 ClientSampled :

Integration File signal 1: autoint1.e
 Integration File signal 2: autoint2.e
 Quant Time: May 20 02:27:05 2021
 Quant Method : Z:\pestpcbsrv\HPCHEM1\ECD_0\methods\P0051821.M
 Quant Title : GC EXTRACTABLES
 QLast Update : Wed May 19 06:28:32 2021
 Response via : Initial Calibration
 Integrator: ChemStation 6890 Scale Mode: Small noise peaks clipped

Volume Inj. : 2 µl
 Signal #1 Phase : ZB-MR1 Signal #2 Phase: ZB-MR2
 Signal #1 Info : 30Mx0.32mmx 0.50µ Signal #2 Info : 30M x 0.32mm x 0.25µm

Compound	RT#1	RT#2	Resp#1	Resp#2	ng/ml	ng/ml
System Monitoring Compounds						
1) SA Tetrachlo...	4.344	3.624	3629173	1553219	49.104	51.404
2) SA Decachlor...	9.959	8.816	2357780	1352516	47.689	46.514
Target Compounds						
3) L1 AR-1016-1	5.640	4.854	697110	321059	286.174	294.055
4) L1 AR-1016-2	5.662	4.873	862619	340144	241.948	218.797
5) L1 AR-1016-3	5.726	5.061	431868	213275	194.893	260.562 #
6) L1 AR-1016-4	5.829	5.113	454077	451886	260.139	635.277 #
7) L1 AR-1016-5	6.142	5.336	1108113	539167	640.544	611.593
9) L2 AR-1221-2	4.687	3.965	50812	26578	82.681	96.483
10) L2 AR-1221-3	4.775	4.060	64123	35094	32.151	39.350
11) L3 AR-1232-1	4.775	4.060	64123	35094	41.921	50.485
12) L3 AR-1232-2	5.350	4.873	326050	340144	413.621	511.304
13) L3 AR-1232-3	5.662	5.061	862619	213275	594.099	627.591
14) L3 AR-1232-4	5.829	5.156	454077	460918	632.337	1454.976 #
15) L3 AR-1232-5	5.931	5.336	935484	539167	1905.281	1549.595
16) L4 AR-1242-1	5.640	4.854	697110	321059	379.456	373.798
17) L4 AR-1242-2	5.662	4.873	862619	340144	319.326	281.127
18) L4 AR-1242-3	5.726	5.061	431868	213275	248.126	331.038 #
19) L4 AR-1242-4	5.829	5.156	454077	460918	324.801	681.778 #
20) L4 AR-1242-5	6.602	5.711	1136765	745870	849.518	909.590
21) L5 AR-1248-1	5.640	4.854	697110	321059	489.233	498.196
22) L5 AR-1248-2	5.931	5.113	935484	451886	492.749	472.712
23) L5 AR-1248-3	6.142	5.156	1108113	460918	499.589	479.505
24) L5 AR-1248-4	6.565	5.336	1200807	539167	515.890	470.781
25) L5 AR-1248-5	6.602	5.753	1136765	519786	502.421	496.051
26) L6 AR-1254-1	6.533	5.711	938510	745870	378.128	432.489
27) L6 AR-1254-2	6.763	5.869	1164330	235354	300.043	146.823 #
28) L6 AR-1254-3	7.137	6.281	623316	352912	158.874	147.863
29) L6 AR-1254-4	7.430	6.520	422450	232808	155.559	160.351
30) L6 AR-1254-5	7.854	6.942	79308	58369	27.119	25.680
31) L7 AR-1260-1	7.301	6.426	46355	168684	16.518	105.278 #
32) L7 AR-1260-2	7.565	6.613	56827	24405	16.892	12.641 #
33) L7 AR-1260-3	0.000	6.763	0	42427	N.D.	23.126 #
34) L7 AR-1260-4	8.144	0.000	49814	0	18.596	N.D. #
35) L7 AR-1260-5	8.466	0.000	38635	0	7.522	N.D. #
36) L8 AR-1262-1	0.000	6.942	0	58369	N.D.	49.743 #
37) L8 AR-1262-2	8.466	0.000	38635	0	6.418	N.D. #
38) L8 AR-1262-3	8.752	0.000	30474	0	7.546	N.D. #
39) L8 AR-1262-4	8.813	0.000	28778	0	9.228	N.D. #
41) L9 AR-1268-1	8.752f	0.000	30474	0	4.299	N.D. #
42) L9 AR-1268-2	8.813	0.000	28778	0	4.447	N.D. #

Data Path : Z:\pestpcbsrv\HPCHEM1\ECD_0\Data\P0051921\
Data File : P0077994.D
Signal(s) : Signal #1: ECD1A.CH Signal #2: ECD2B.CH
Acq On : 19 May 2021 15:13
Operator : DD\AJ
Sample : AR1248CCC500
Misc :
ALS Vial : 6 Sample Multiplier: 1

Instrument :
ECD_O
ClientSampleId :

Integration File signal 1: autoint1.e
Integration File signal 2: autoint2.e
Quant Time: May 20 02:27:05 2021
Quant Method : Z:\pestpcbsrv\HPCHEM1\ECD_0\methods\P0051821.M
Quant Title : GC EXTRACTABLES
QLast Update : Wed May 19 06:28:32 2021
Response via : Initial Calibration
Integrator: ChemStation 6890 Scale Mode: Small noise peaks clipped

Volume Inj. : 2 µl
Signal #1 Phase : ZB-MR1 Signal #2 Phase: ZB-MR2
Signal #1 Info : 30Mx0.32mmx 0.50µ Signal #2 Info : 30M x 0.32mm x 0.25µm

Compound	RT#1	RT#2	Resp#1	Resp#2	ng/ml	ng/ml
----------	------	------	--------	--------	-------	-------

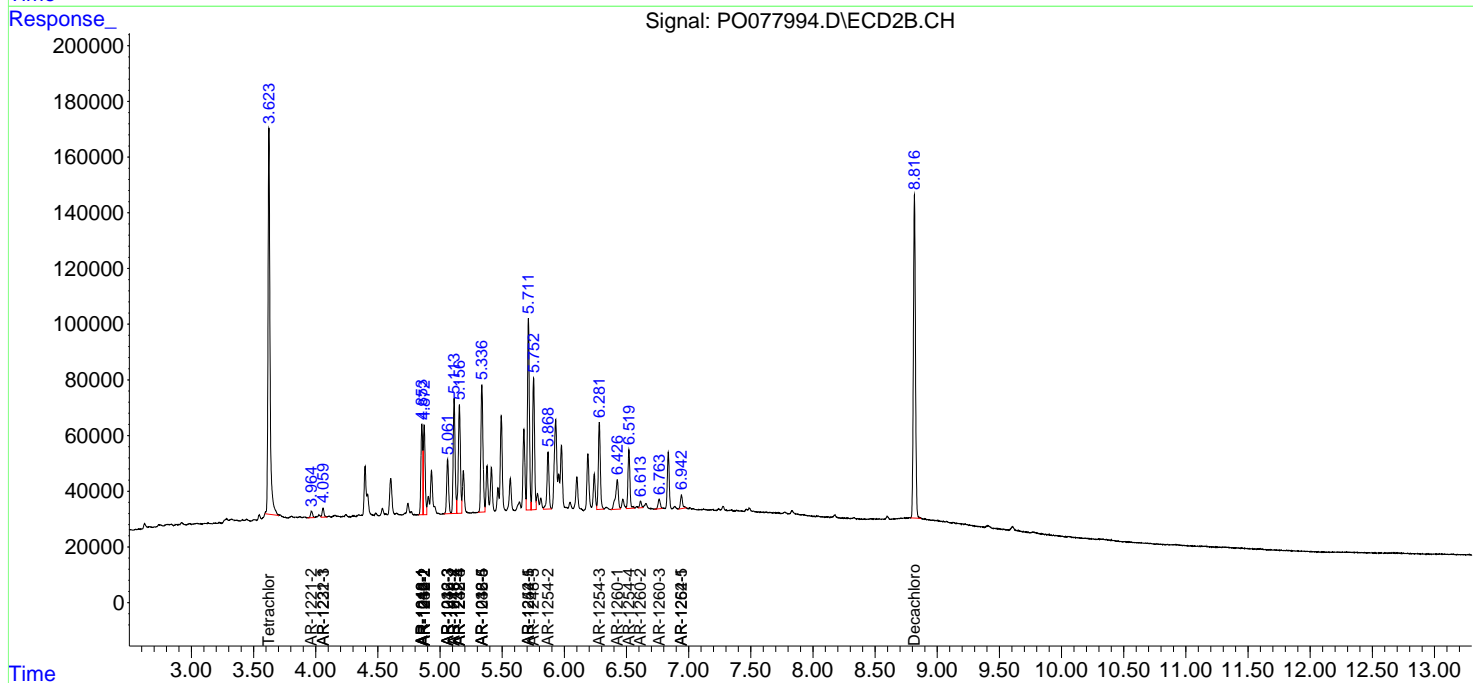
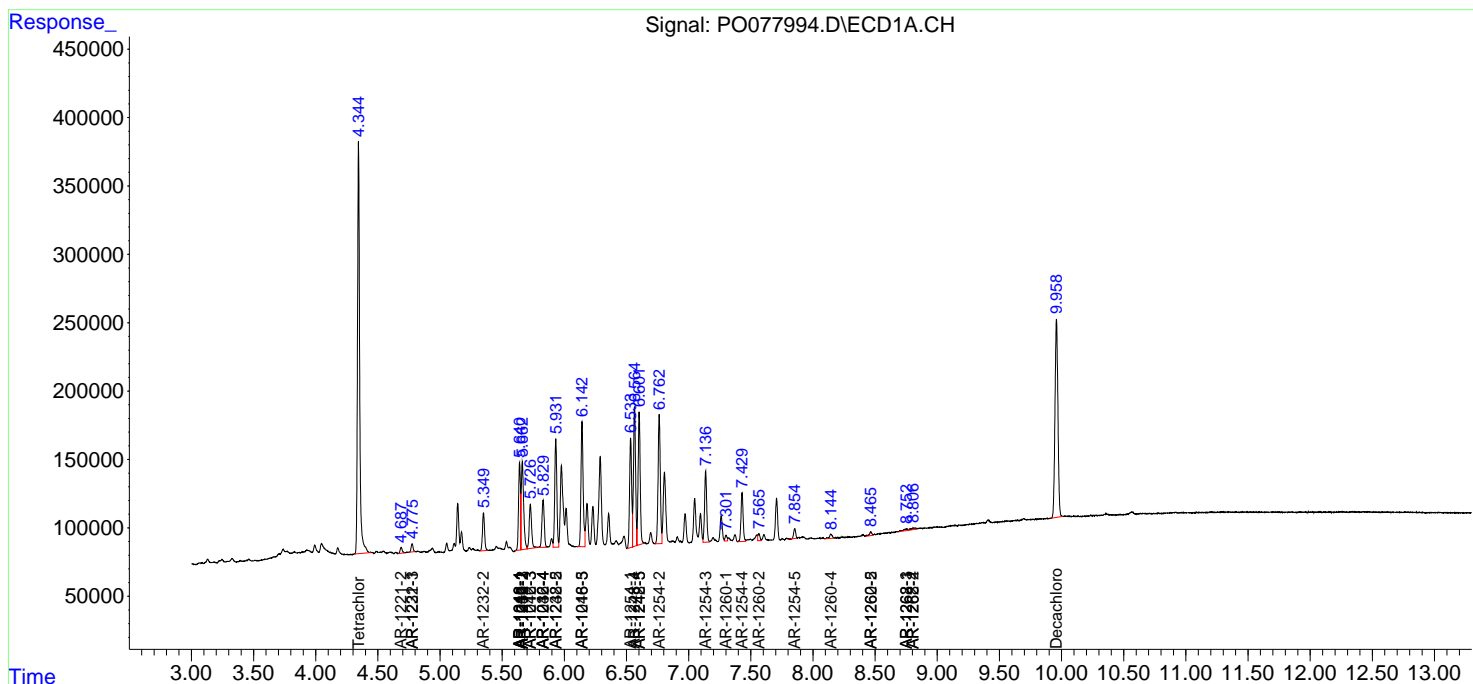
(f)=RT Delta > 1/2 Window (#)=Amounts differ by > 25% (m)=manual int.

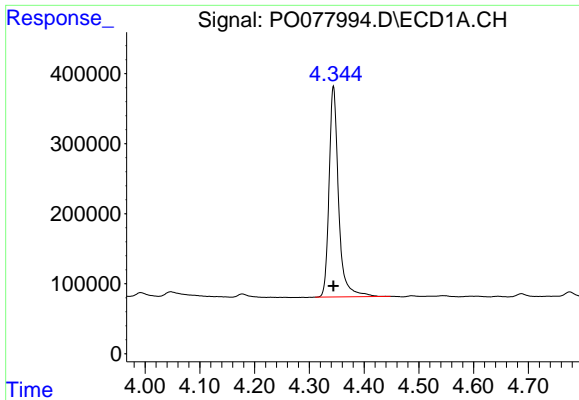
Data Path : Z:\pestpcbsrv\HPCHEM1\ECD_0\Data\P0051921\
 Data File : P0077994.D
 Signal(s) : Signal #1: ECD1A.CH Signal #2: ECD2B.CH
 Acq On : 19 May 2021 15:13
 Operator : DD\AJ
 Sample : AR1248CCC500
 Misc :
 ALS Vial : 6 Sample Multiplier: 1

Instrument :
 ECD_O
 ClientSampled :

Integration File signal 1: autoint1.e
 Integration File signal 2: autoint2.e
 Quant Time: May 20 02:27:05 2021
 Quant Method : Z:\pestpcbsrv\HPCHEM1\ECD_0\methods\P0051821.M
 Quant Title : GC EXTRACTABLES
 QLast Update : Wed May 19 06:28:32 2021
 Response via : Initial Calibration
 Integrator: ChemStation 6890 Scale Mode: Small noise peaks clipped

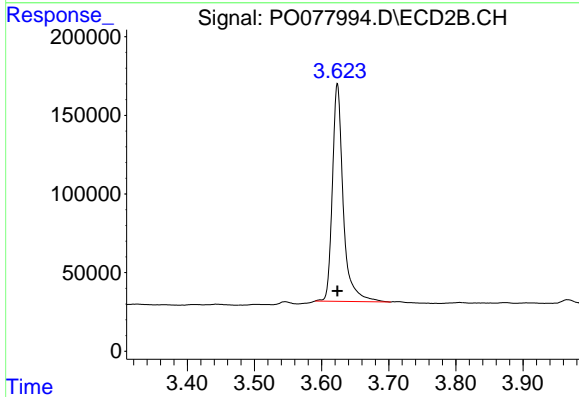
Volume Inj. : 2 µl
 Signal #1 Phase : ZB-MR1 Signal #2 Phase: ZB-MR2
 Signal #1 Info : 30Mx0.32mmx 0.50µ Signal #2 Info : 30M x 0.32mm x 0.25µm



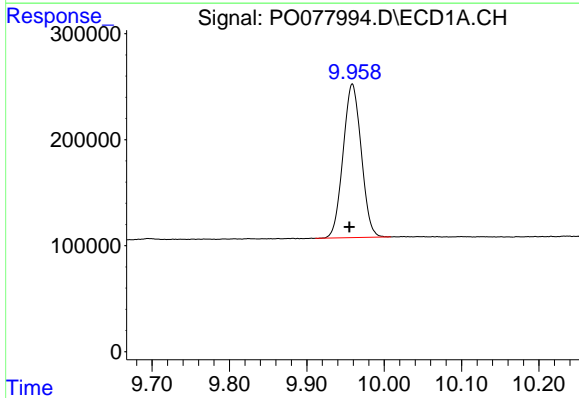


#1 Tetrachloro-m-xylene
 R.T.: 4.344 min
 Delta R.T.: 0.000 min
 Response: 3629173
 Conc: 49.10 ng/ml

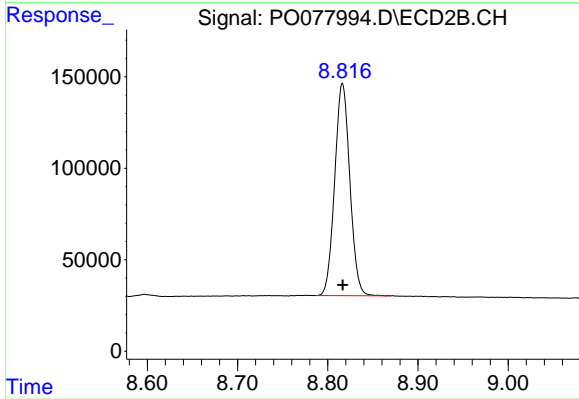
Instrument :
 ECD_O
 ClientSampleId :



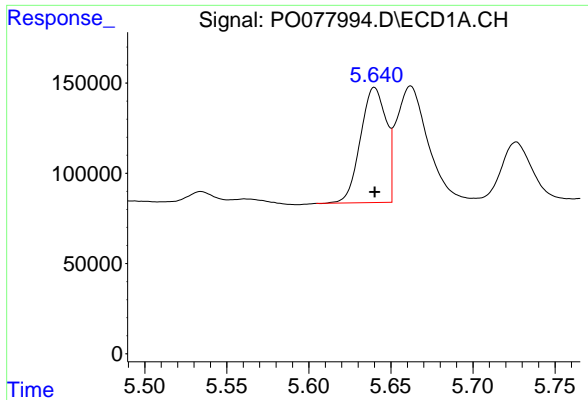
#1 Tetrachloro-m-xylene
 R.T.: 3.624 min
 Delta R.T.: 0.000 min
 Response: 1553219
 Conc: 51.40 ng/ml



#2 Decachlorobiphenyl
 R.T.: 9.959 min
 Delta R.T.: 0.004 min
 Response: 2357780
 Conc: 47.69 ng/ml



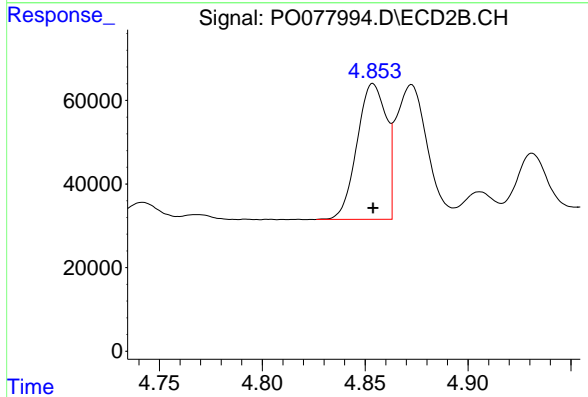
#2 Decachlorobiphenyl
 R.T.: 8.816 min
 Delta R.T.: 0.000 min
 Response: 1352516
 Conc: 46.51 ng/ml



#3 AR-1016-1

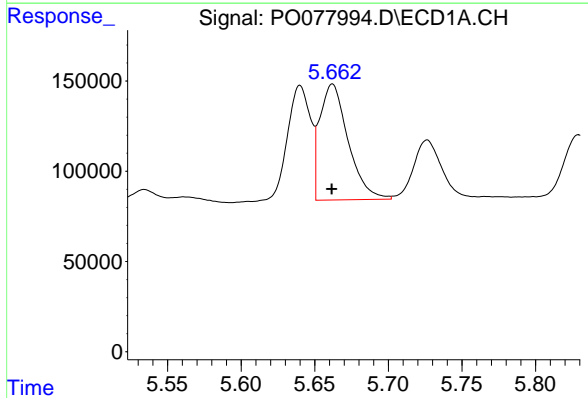
R.T.: 5.640 min
 Delta R.T.: 0.000 min
 Response: 697110
 Conc: 286.17 ng/ml

Instrument :
 ECD_O
 ClientSampleId :



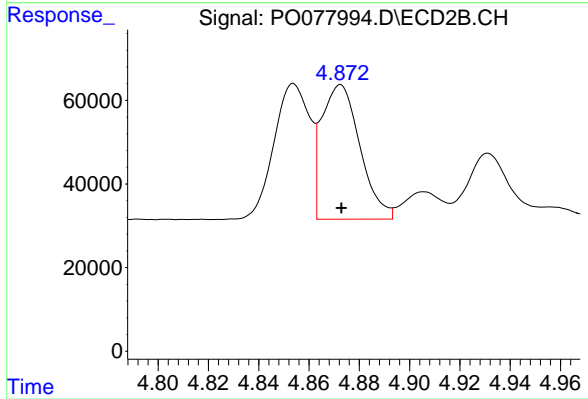
#3 AR-1016-1

R.T.: 4.854 min
 Delta R.T.: 0.000 min
 Response: 321059
 Conc: 294.05 ng/ml



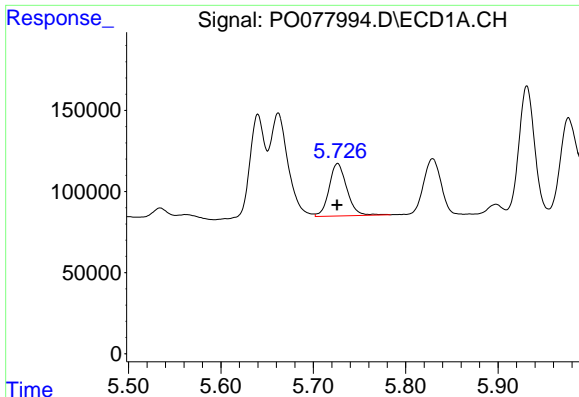
#4 AR-1016-2

R.T.: 5.662 min
 Delta R.T.: 0.000 min
 Response: 862619
 Conc: 241.95 ng/ml



#4 AR-1016-2

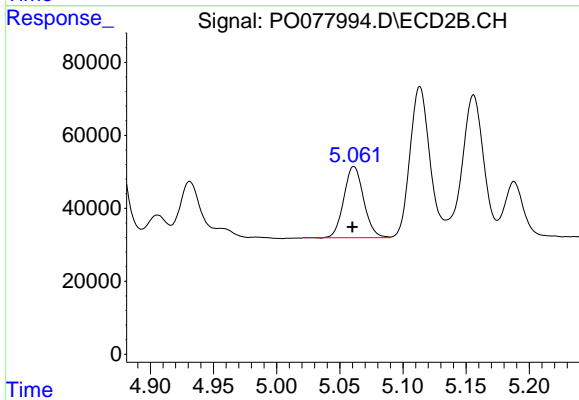
R.T.: 4.873 min
 Delta R.T.: 0.000 min
 Response: 340144
 Conc: 218.80 ng/ml



#5 AR-1016-3

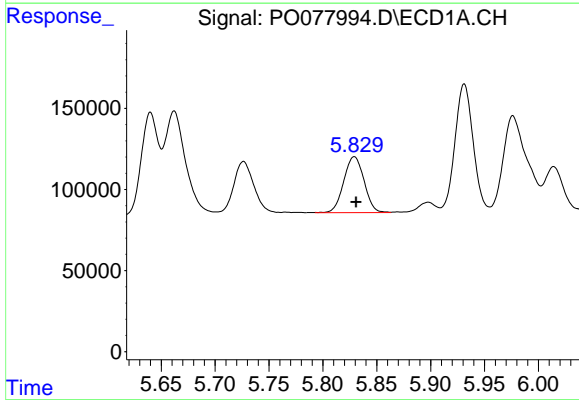
R.T.: 5.726 min
 Delta R.T.: 0.000 min
 Response: 431868
 Conc: 194.89 ng/ml

Instrument :
 ECD_O
 ClientSampleId :



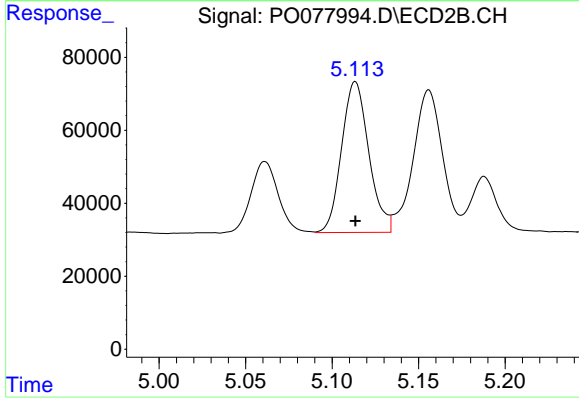
#5 AR-1016-3

R.T.: 5.061 min
 Delta R.T.: 0.001 min
 Response: 213275
 Conc: 260.56 ng/ml



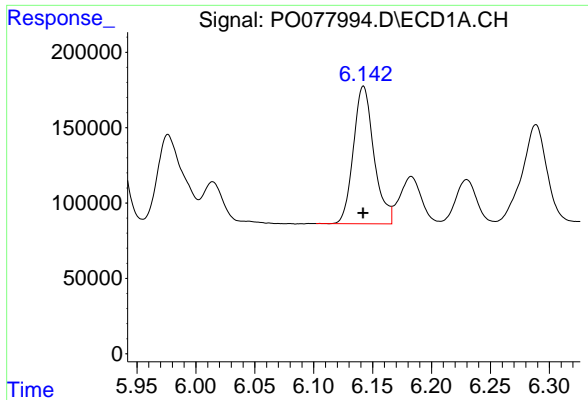
#6 AR-1016-4

R.T.: 5.829 min
 Delta R.T.: -0.001 min
 Response: 454077
 Conc: 260.14 ng/ml



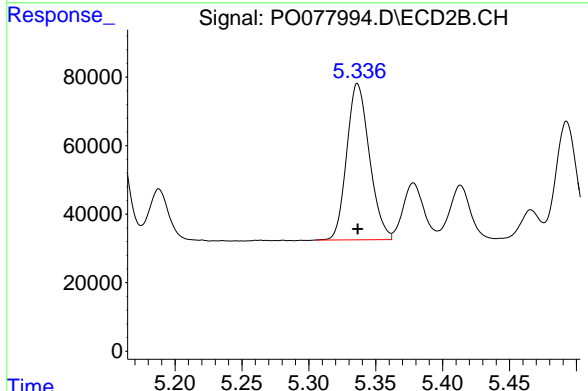
#6 AR-1016-4

R.T.: 5.113 min
 Delta R.T.: 0.000 min
 Response: 451886
 Conc: 635.28 ng/ml

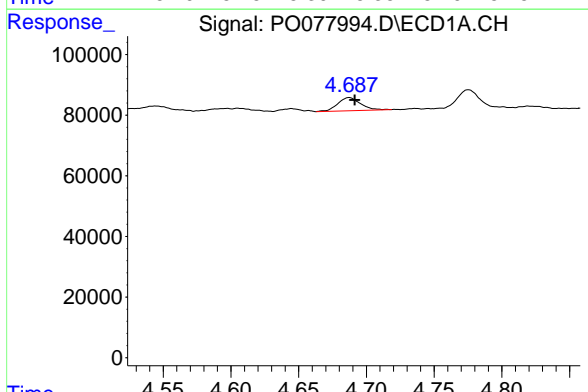


#7 AR-1016-5
 R.T.: 6.142 min
 Delta R.T.: 0.000 min
 Response: 1108113
 Conc: 640.54 ng/ml

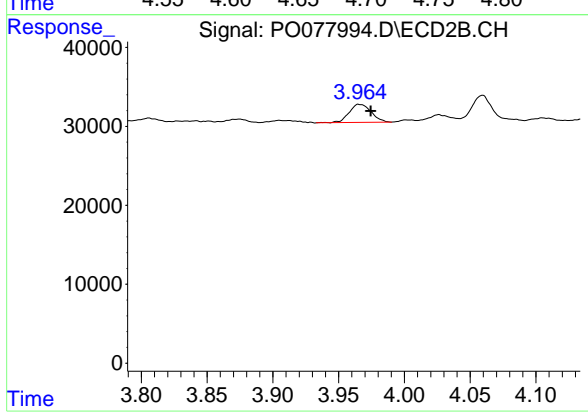
Instrument :
 ECD_O
 ClientSampled :



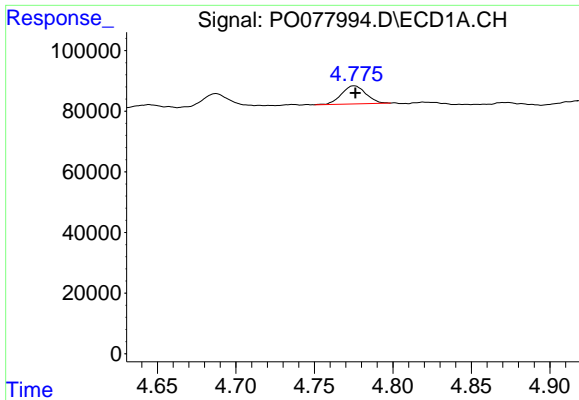
#7 AR-1016-5
 R.T.: 5.336 min
 Delta R.T.: 0.000 min
 Response: 539167
 Conc: 611.59 ng/ml



#9 AR-1221-2
 R.T.: 4.687 min
 Delta R.T.: -0.004 min
 Response: 50812
 Conc: 82.68 ng/ml

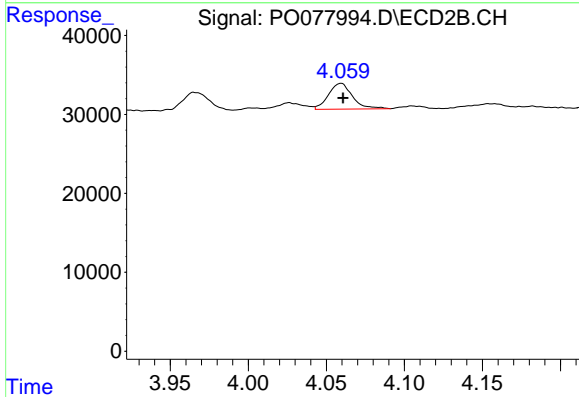


#9 AR-1221-2
 R.T.: 3.965 min
 Delta R.T.: -0.009 min
 Response: 26578
 Conc: 96.48 ng/ml

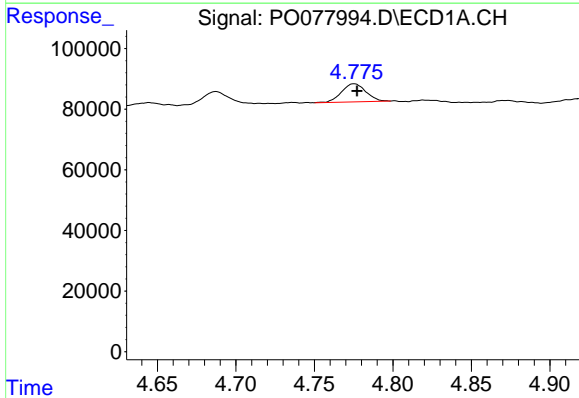


#10 AR-1221-3
 R.T.: 4.775 min
 Delta R.T.: 0.000 min
 Response: 64123
 Conc: 32.15 ng/ml

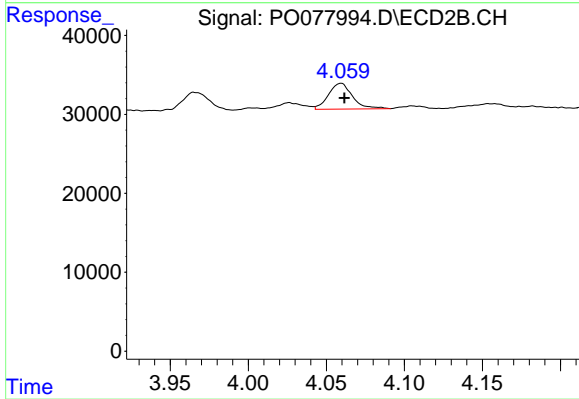
Instrument :
 ECD_O
 ClientSampleId :



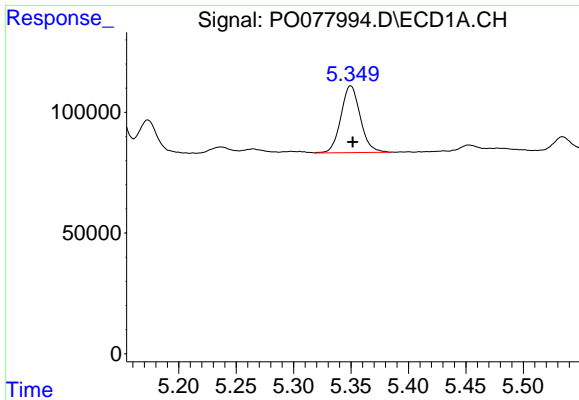
#10 AR-1221-3
 R.T.: 4.060 min
 Delta R.T.: -0.001 min
 Response: 35094
 Conc: 39.35 ng/ml



#11 AR-1232-1
 R.T.: 4.775 min
 Delta R.T.: -0.002 min
 Response: 64123
 Conc: 41.92 ng/ml



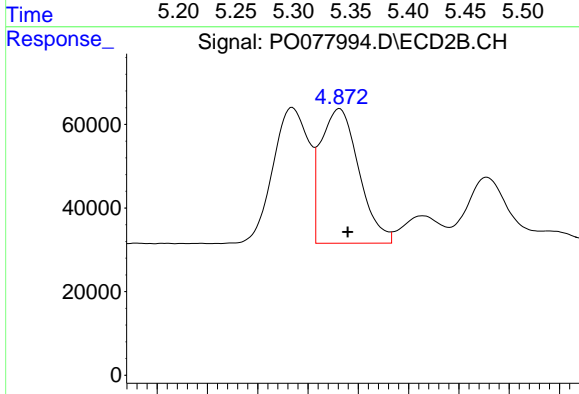
#11 AR-1232-1
 R.T.: 4.060 min
 Delta R.T.: -0.002 min
 Response: 35094
 Conc: 50.49 ng/ml



#12 AR-1232-2

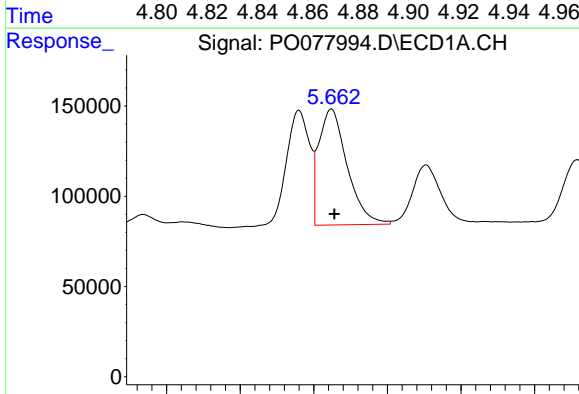
R.T.: 5.350 min
 Delta R.T.: -0.002 min
 Response: 326050
 Conc: 413.62 ng/ml

Instrument :
 ECD_O
 ClientSampled :



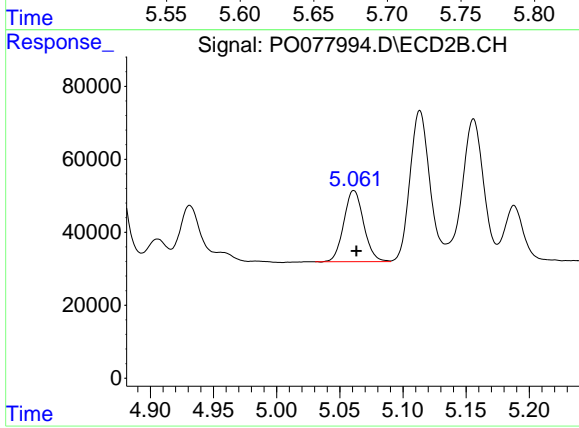
#12 AR-1232-2

R.T.: 4.873 min
 Delta R.T.: -0.003 min
 Response: 340144
 Conc: 511.30 ng/ml



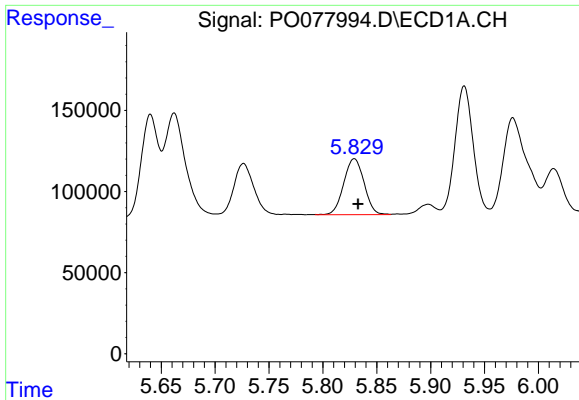
#13 AR-1232-3

R.T.: 5.662 min
 Delta R.T.: -0.002 min
 Response: 862619
 Conc: 594.10 ng/ml



#13 AR-1232-3

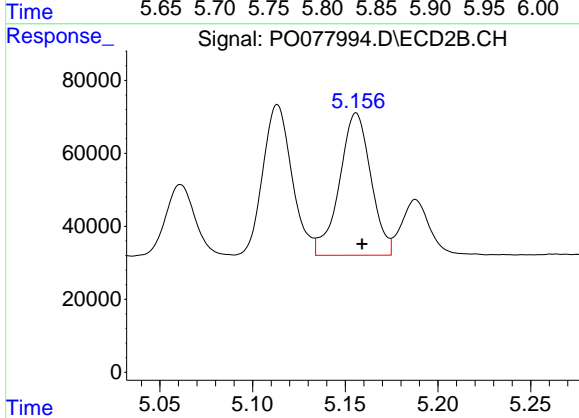
R.T.: 5.061 min
 Delta R.T.: -0.002 min
 Response: 213275
 Conc: 627.59 ng/ml



#14 AR-1232-4

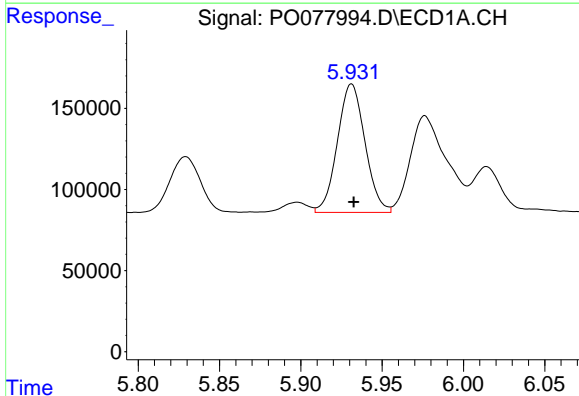
R.T.: 5.829 min
 Delta R.T.: -0.003 min
 Response: 454077
 Conc: 632.34 ng/ml

Instrument :
 ECD_O
 ClientSampled :



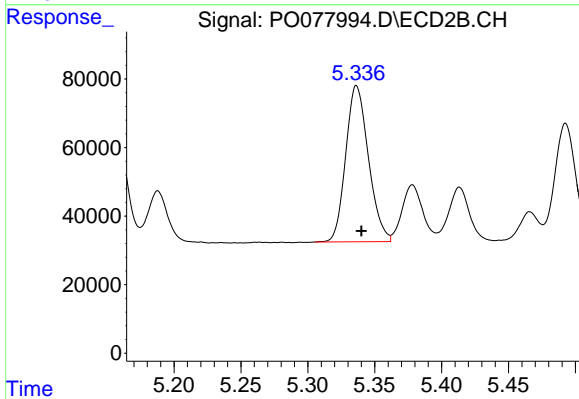
#14 AR-1232-4

R.T.: 5.156 min
 Delta R.T.: -0.003 min
 Response: 460918
 Conc: 1454.98 ng/ml



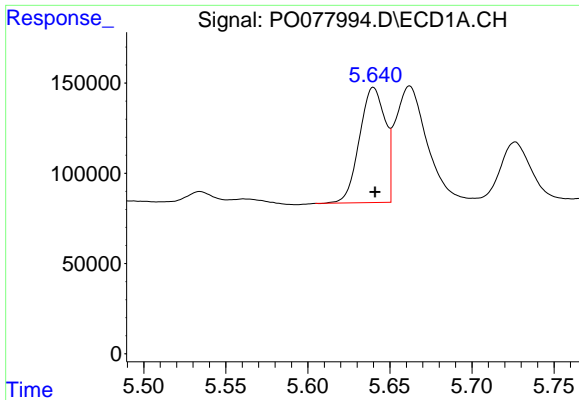
#15 AR-1232-5

R.T.: 5.931 min
 Delta R.T.: -0.001 min
 Response: 935484
 Conc: 1905.28 ng/ml



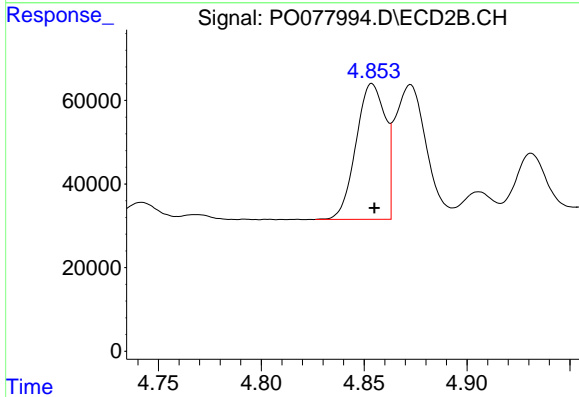
#15 AR-1232-5

R.T.: 5.336 min
 Delta R.T.: -0.004 min
 Response: 539167
 Conc: 1549.60 ng/ml

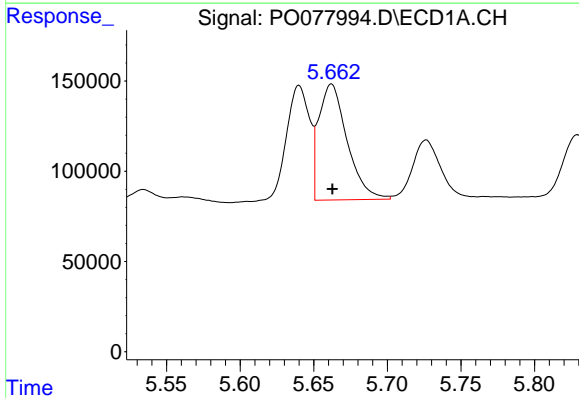


#16 AR-1242-1
 R.T.: 5.640 min
 Delta R.T.: 0.000 min
 Response: 697110
 Conc: 379.46 ng/ml

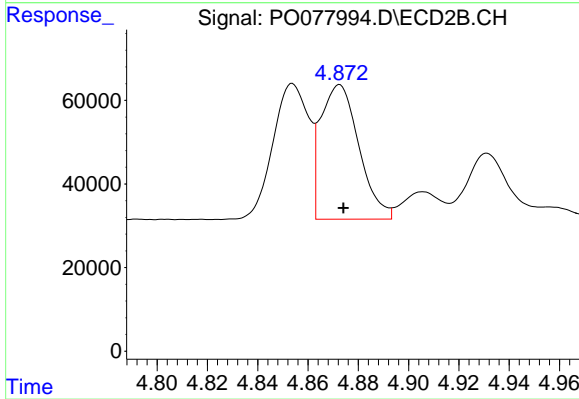
Instrument :
 ECD_O
 ClientSampleId :



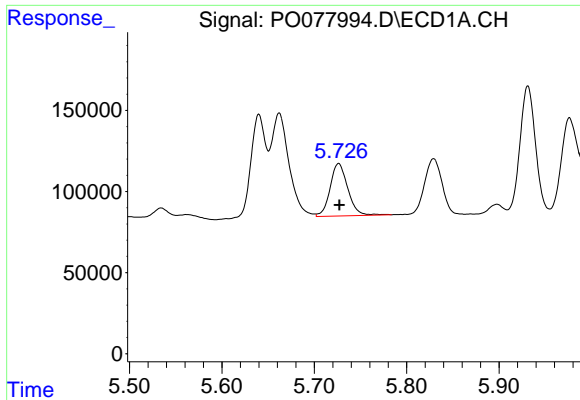
#16 AR-1242-1
 R.T.: 4.854 min
 Delta R.T.: -0.001 min
 Response: 321059
 Conc: 373.80 ng/ml



#17 AR-1242-2
 R.T.: 5.662 min
 Delta R.T.: 0.000 min
 Response: 862619
 Conc: 319.33 ng/ml



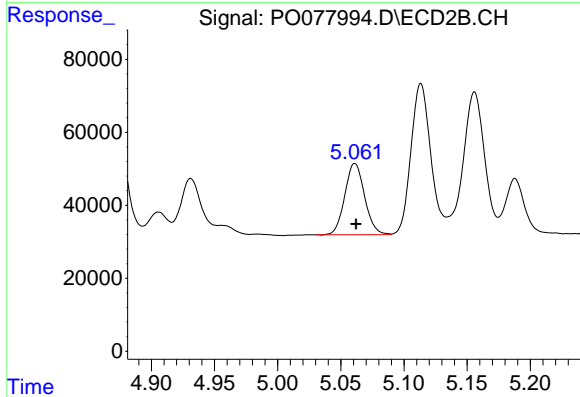
#17 AR-1242-2
 R.T.: 4.873 min
 Delta R.T.: -0.001 min
 Response: 340144
 Conc: 281.13 ng/ml



#18 AR-1242-3

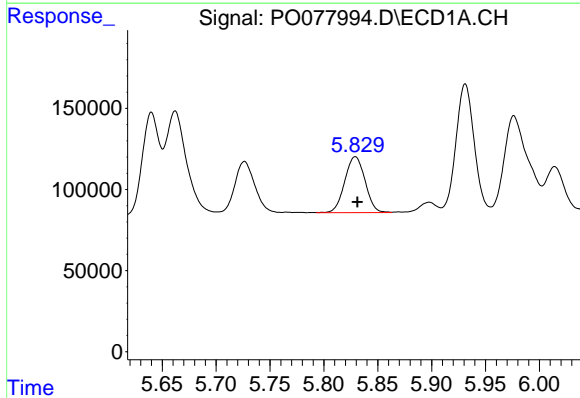
R.T.: 5.726 min
 Delta R.T.: 0.000 min
 Response: 431868
 Conc: 248.13 ng/ml

Instrument :
 ECD_O
 ClientSampleId :



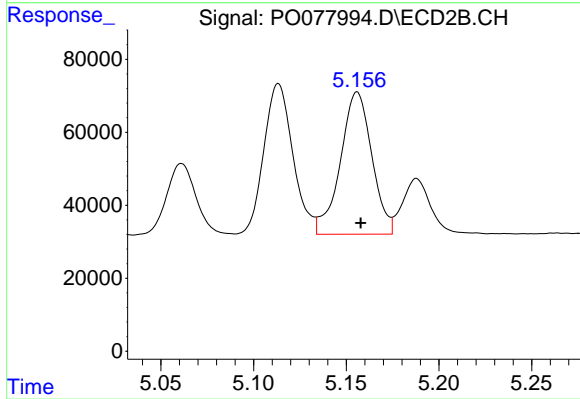
#18 AR-1242-3

R.T.: 5.061 min
 Delta R.T.: 0.000 min
 Response: 213275
 Conc: 331.04 ng/ml



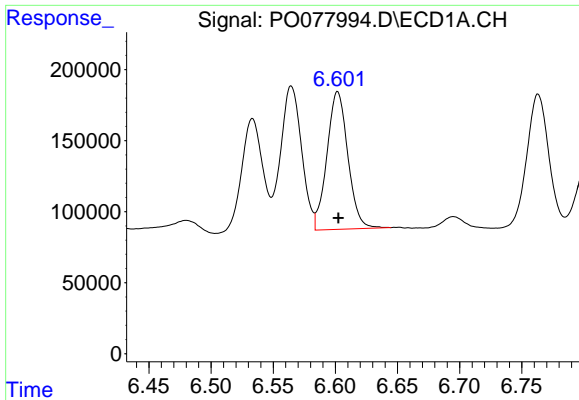
#19 AR-1242-4

R.T.: 5.829 min
 Delta R.T.: -0.002 min
 Response: 454077
 Conc: 324.80 ng/ml



#19 AR-1242-4

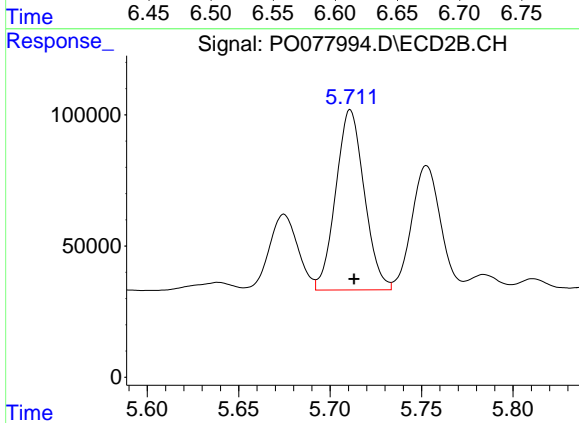
R.T.: 5.156 min
 Delta R.T.: -0.002 min
 Response: 460918
 Conc: 681.78 ng/ml



#20 AR-1242-5

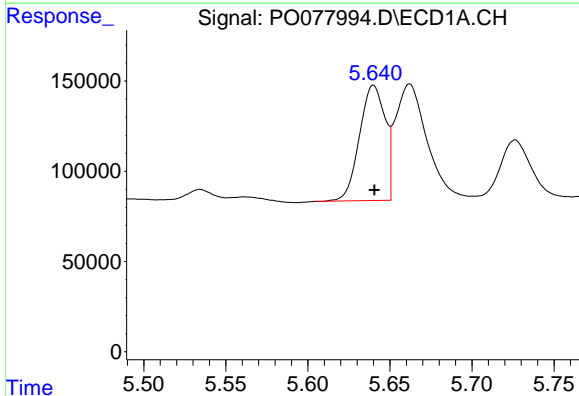
R.T.: 6.602 min
 Delta R.T.: 0.000 min
 Response: 1136765
 Conc: 849.52 ng/ml

Instrument :
 ECD_O
 ClientSampled :



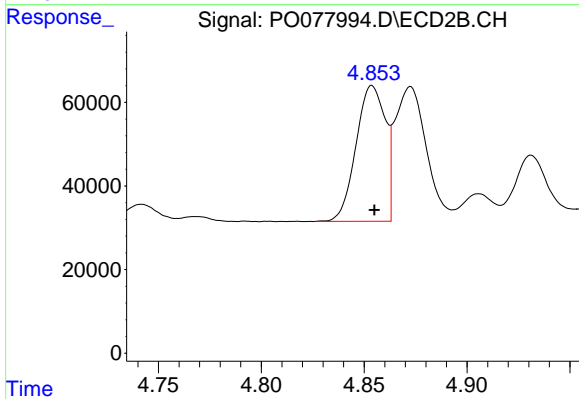
#20 AR-1242-5

R.T.: 5.711 min
 Delta R.T.: -0.002 min
 Response: 745870
 Conc: 909.59 ng/ml



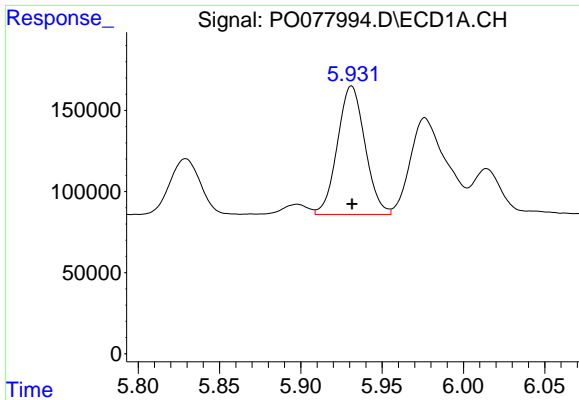
#21 AR-1248-1

R.T.: 5.640 min
 Delta R.T.: 0.000 min
 Response: 697110
 Conc: 489.23 ng/ml



#21 AR-1248-1

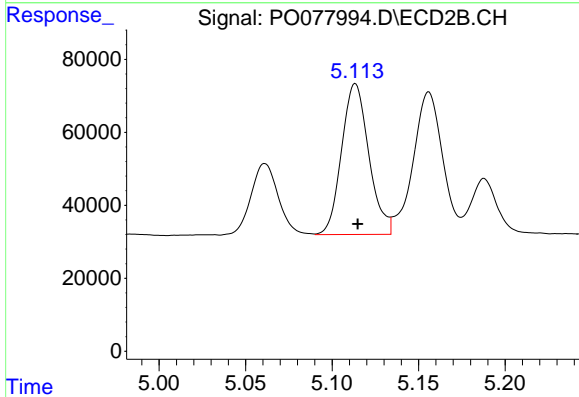
R.T.: 4.854 min
 Delta R.T.: -0.001 min
 Response: 321059
 Conc: 498.20 ng/ml



#22 AR-1248-2

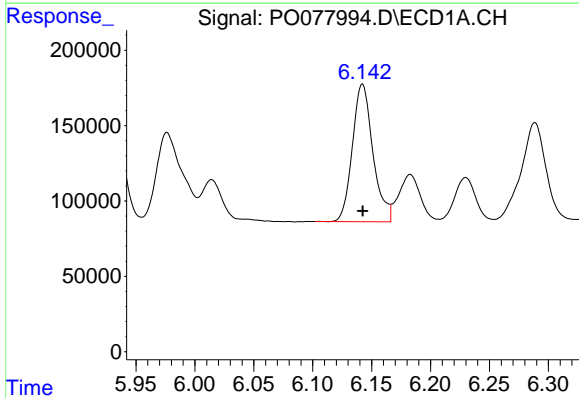
R.T.: 5.931 min
 Delta R.T.: 0.000 min
 Response: 935484
 Conc: 492.75 ng/ml

Instrument :
 ECD_O
 ClientSampled :



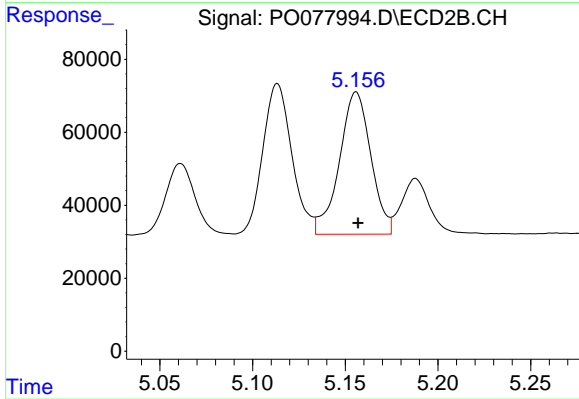
#22 AR-1248-2

R.T.: 5.113 min
 Delta R.T.: -0.001 min
 Response: 451886
 Conc: 472.71 ng/ml



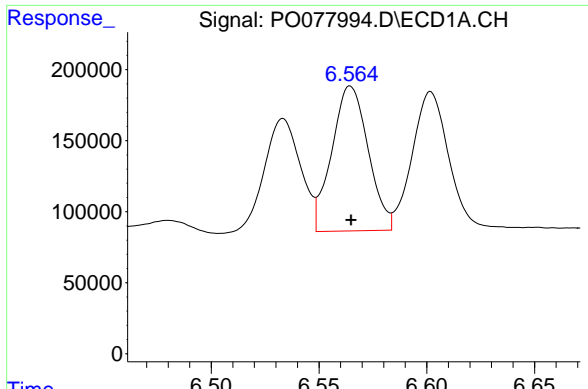
#23 AR-1248-3

R.T.: 6.142 min
 Delta R.T.: 0.000 min
 Response: 1108113
 Conc: 499.59 ng/ml



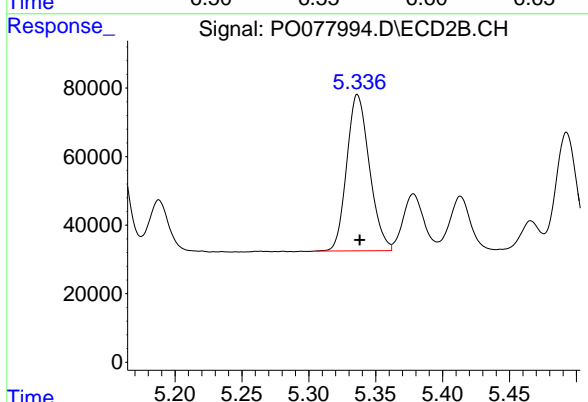
#23 AR-1248-3

R.T.: 5.156 min
 Delta R.T.: -0.001 min
 Response: 460918
 Conc: 479.50 ng/ml

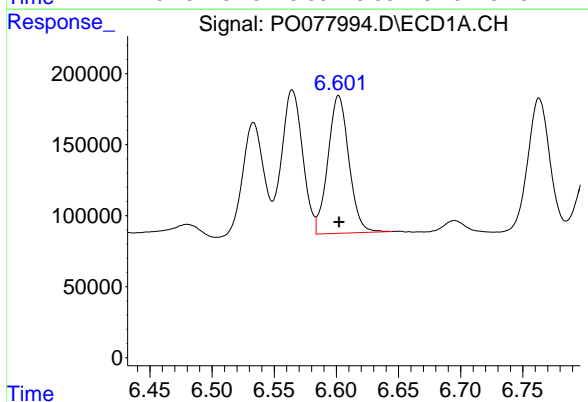


#24 AR-1248-4
 R.T.: 6.565 min
 Delta R.T.: 0.000 min
 Response: 1200807
 Conc: 515.89 ng/ml

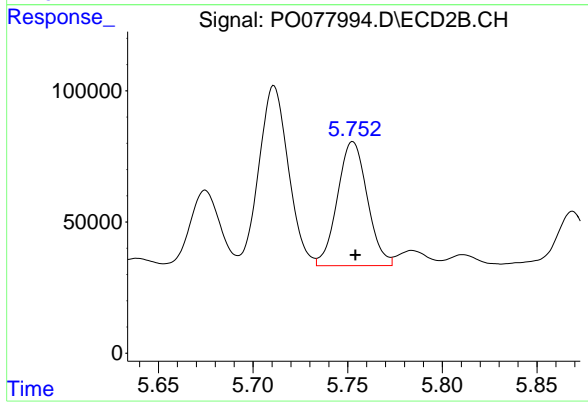
Instrument :
 ECD_O
 ClientSampleId :



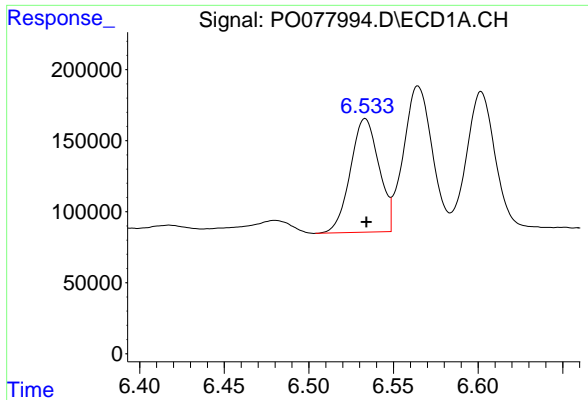
#24 AR-1248-4
 R.T.: 5.336 min
 Delta R.T.: -0.002 min
 Response: 539167
 Conc: 470.78 ng/ml



#25 AR-1248-5
 R.T.: 6.602 min
 Delta R.T.: 0.000 min
 Response: 1136765
 Conc: 502.42 ng/ml



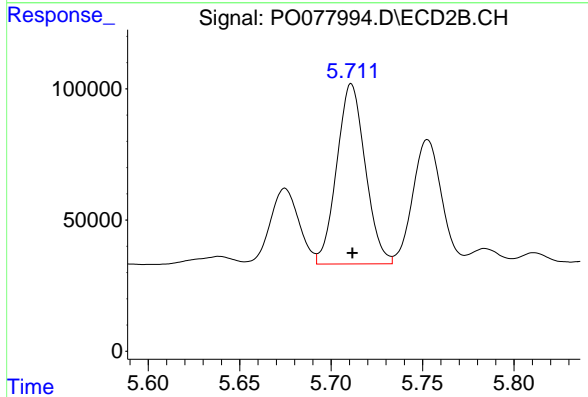
#25 AR-1248-5
 R.T.: 5.753 min
 Delta R.T.: -0.001 min
 Response: 519786
 Conc: 496.05 ng/ml



#26 AR-1254-1

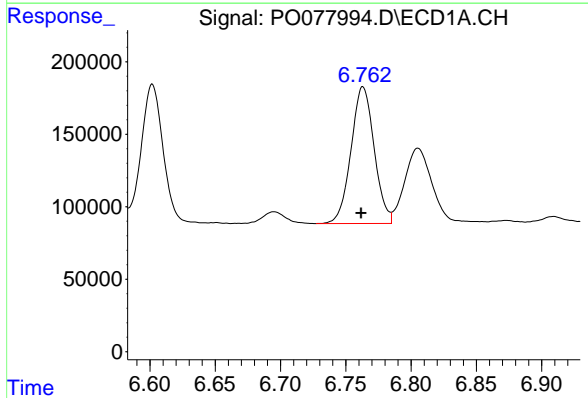
R.T.: 6.533 min
 Delta R.T.: 0.000 min
 Response: 938510
 Conc: 378.13 ng/ml

Instrument :
 ECD_O
 ClientSampled :



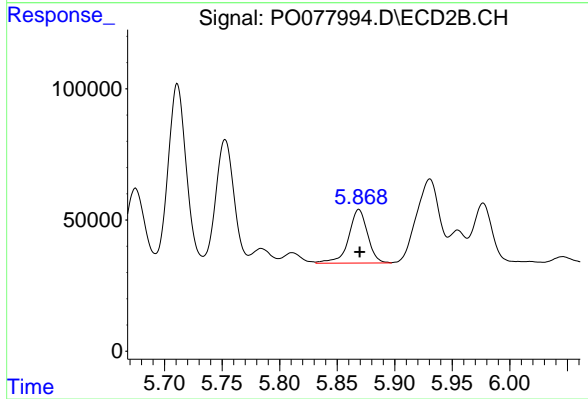
#26 AR-1254-1

R.T.: 5.711 min
 Delta R.T.: 0.000 min
 Response: 745870
 Conc: 432.49 ng/ml



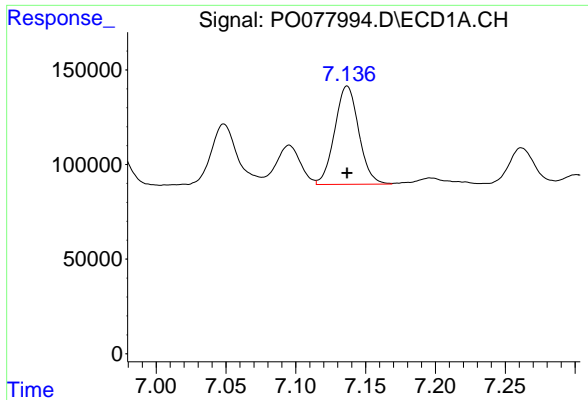
#27 AR-1254-2

R.T.: 6.763 min
 Delta R.T.: 0.001 min
 Response: 1164330
 Conc: 300.04 ng/ml



#27 AR-1254-2

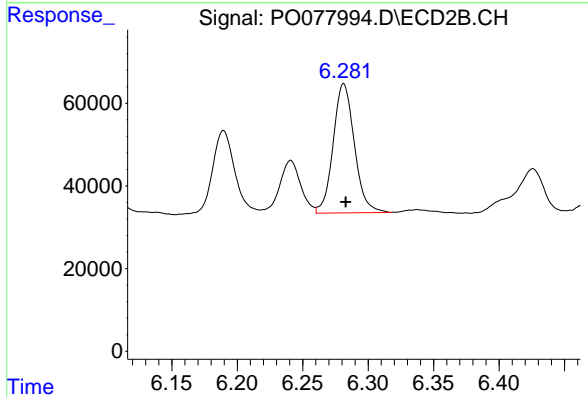
R.T.: 5.869 min
 Delta R.T.: 0.000 min
 Response: 235354
 Conc: 146.82 ng/ml



#28 AR-1254-3

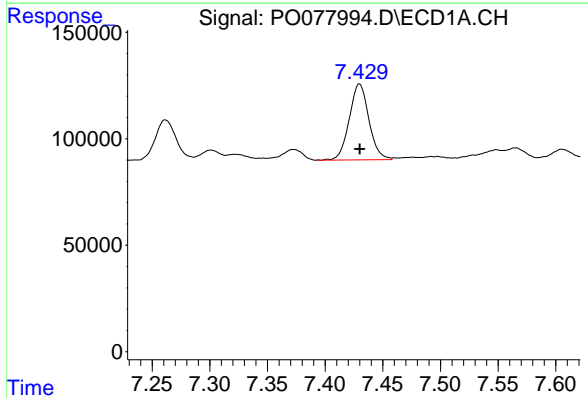
R.T.: 7.137 min
Delta R.T.: 0.000 min
Response: 623316
Conc: 158.87 ng/ml

Instrument :
ECD_O
ClientSampleId :



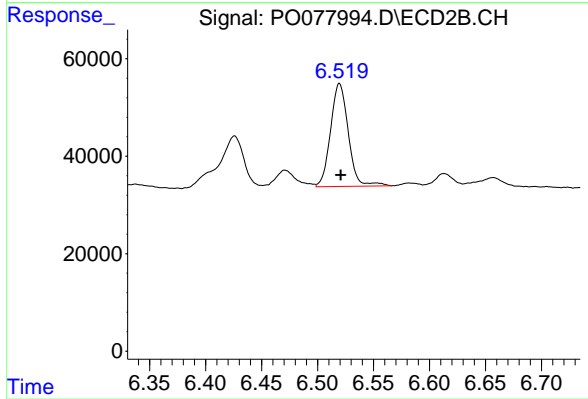
#28 AR-1254-3

R.T.: 6.281 min
Delta R.T.: -0.002 min
Response: 352912
Conc: 147.86 ng/ml



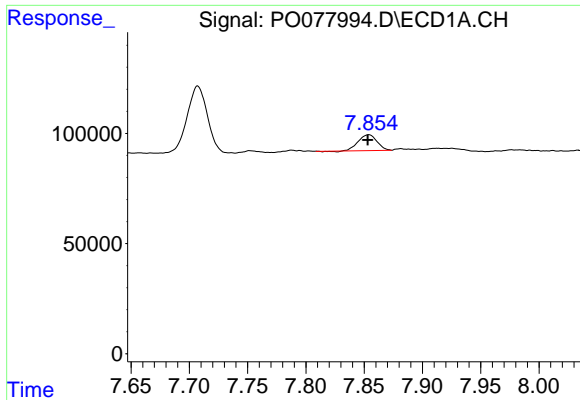
#29 AR-1254-4

R.T.: 7.430 min
Delta R.T.: 0.000 min
Response: 422450
Conc: 155.56 ng/ml



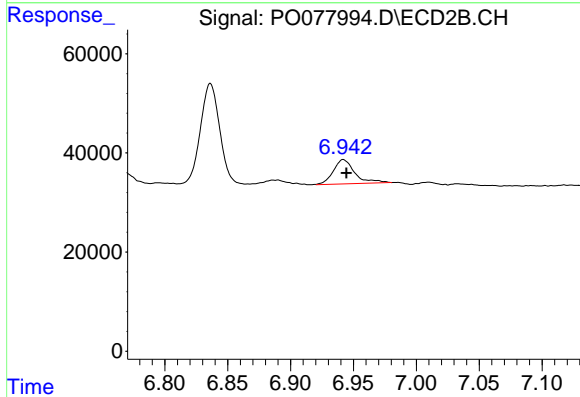
#29 AR-1254-4

R.T.: 6.520 min
Delta R.T.: 0.000 min
Response: 232808
Conc: 160.35 ng/ml

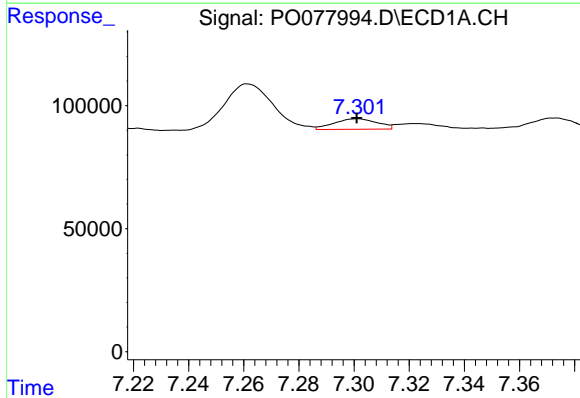


#30 AR-1254-5
 R.T.: 7.854 min
 Delta R.T.: 0.000 min
 Response: 79308
 Conc: 27.12 ng/ml

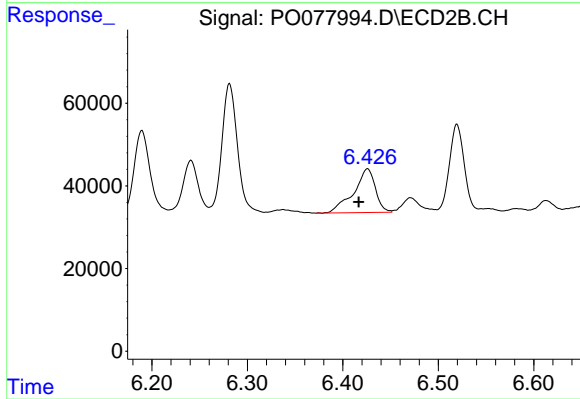
Instrument :
 ECD_O
 ClientSampled :



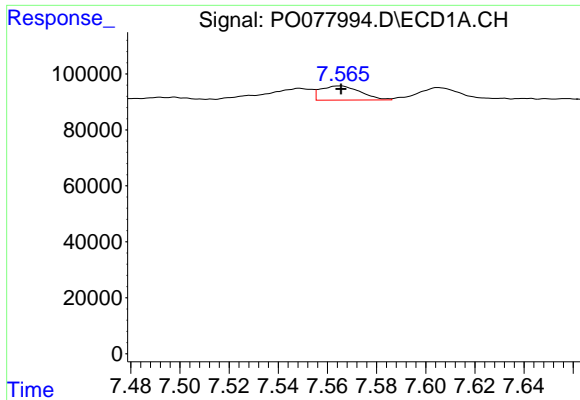
#30 AR-1254-5
 R.T.: 6.942 min
 Delta R.T.: -0.002 min
 Response: 58369
 Conc: 25.68 ng/ml



#31 AR-1260-1
 R.T.: 7.301 min
 Delta R.T.: 0.000 min
 Response: 46355
 Conc: 16.52 ng/ml

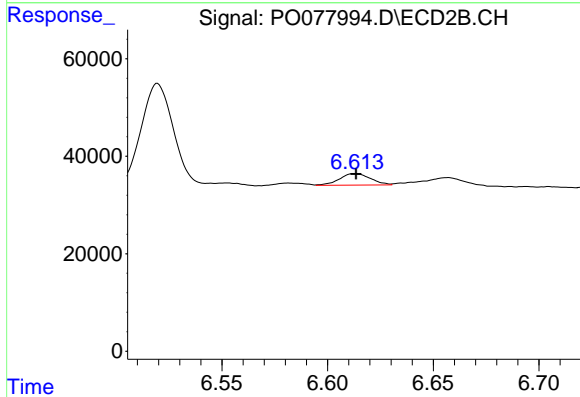


#31 AR-1260-1
 R.T.: 6.426 min
 Delta R.T.: 0.009 min
 Response: 168684
 Conc: 105.28 ng/ml

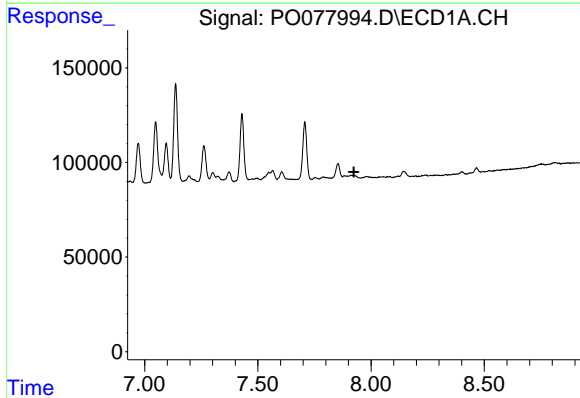


#32 AR-1260-2
 R.T.: 7.565 min
 Delta R.T.: 0.000 min
 Response: 56827
 Conc: 16.89 ng/ml

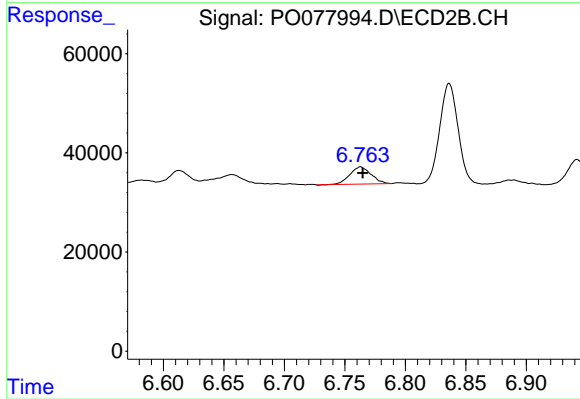
Instrument :
 ECD_O
 ClientSampleId :



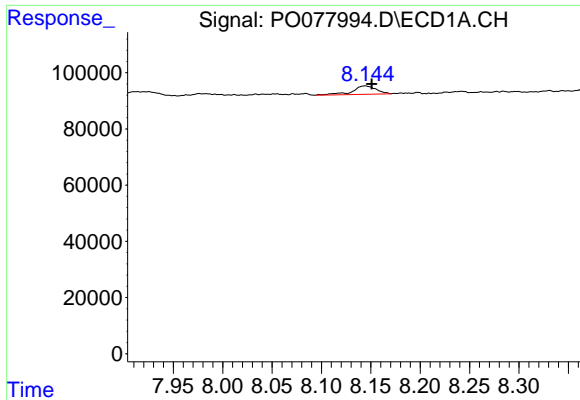
#32 AR-1260-2
 R.T.: 6.613 min
 Delta R.T.: 0.000 min
 Response: 24405
 Conc: 12.64 ng/ml



#33 AR-1260-3
 R.T.: 0.000 min
 Exp R.T. : 7.924 min
 Response: 0
 Conc: N.D.



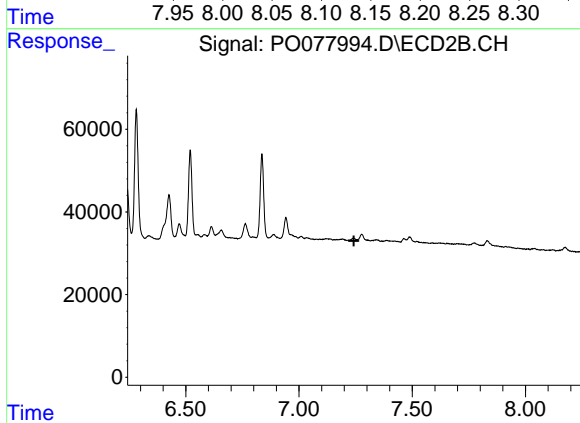
#33 AR-1260-3
 R.T.: 6.763 min
 Delta R.T.: -0.002 min
 Response: 42427
 Conc: 23.13 ng/ml



#34 AR-1260-4

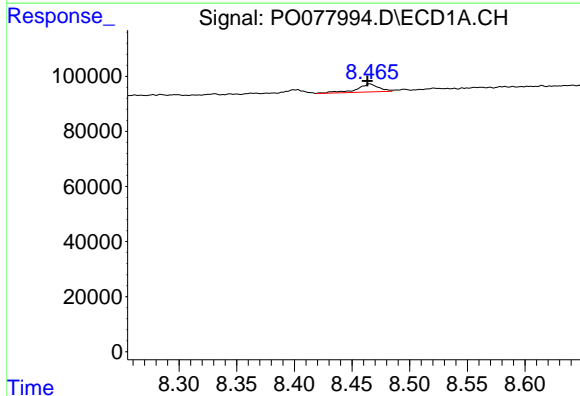
R.T.: 8.144 min
 Delta R.T.: -0.007 min
 Response: 49814
 Conc: 18.60 ng/ml

Instrument :
 ECD_O
 ClientSampled :



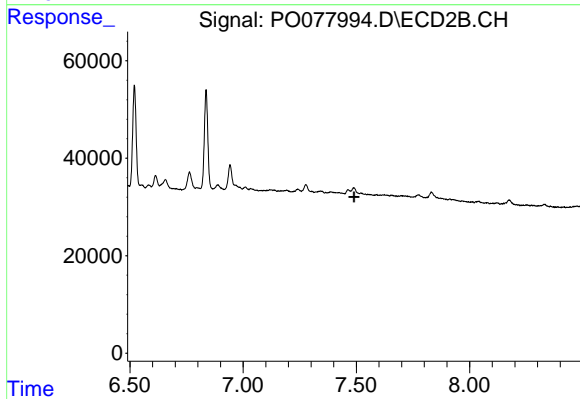
#34 AR-1260-4

R.T.: 0.000 min
 Exp R.T. : 7.242 min
 Response: 0
 Conc: N.D.



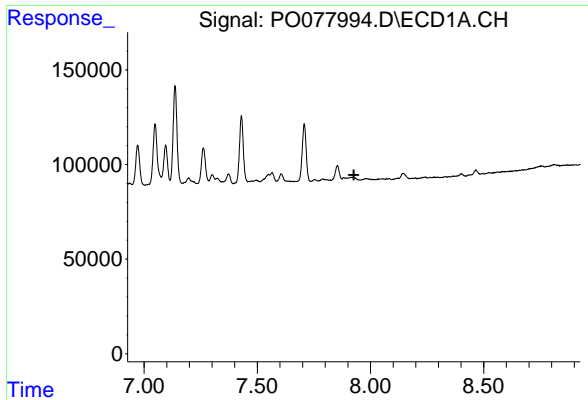
#35 AR-1260-5

R.T.: 8.466 min
 Delta R.T.: 0.002 min
 Response: 38635
 Conc: 7.52 ng/ml



#35 AR-1260-5

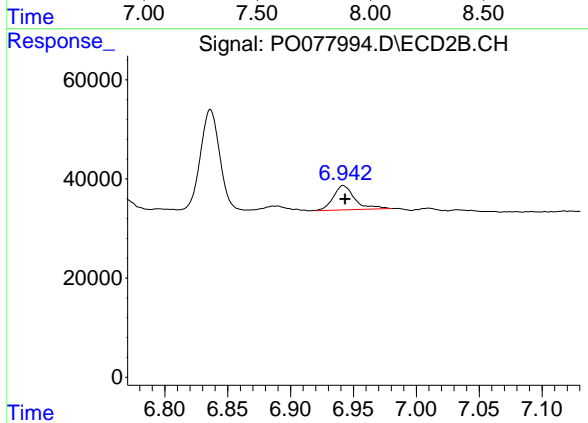
R.T.: 0.000 min
 Exp R.T. : 7.489 min
 Response: 0
 Conc: N.D.



#36 AR-1262-1

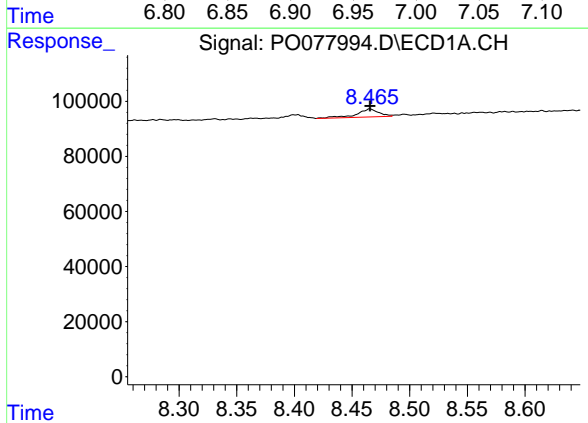
R.T.: 0.000 min
 Exp R.T.: 7.927 min
 Response: 0
 Conc: N.D.

Instrument :
 ECD_O
 ClientSampleId :



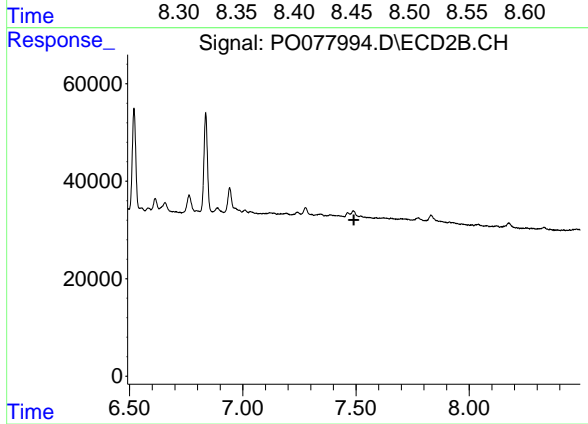
#36 AR-1262-1

R.T.: 6.942 min
 Delta R.T.: -0.001 min
 Response: 58369
 Conc: 49.74 ng/ml



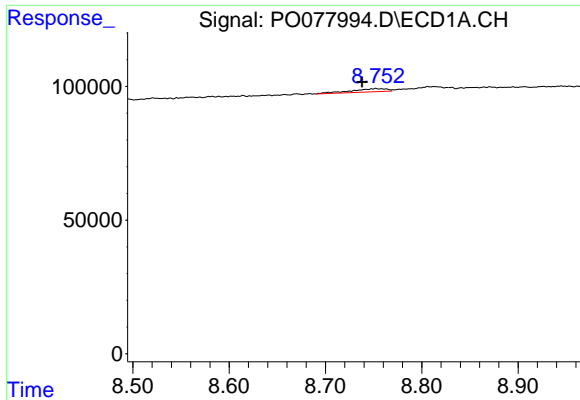
#37 AR-1262-2

R.T.: 8.466 min
 Delta R.T.: 0.000 min
 Response: 38635
 Conc: 6.42 ng/ml



#37 AR-1262-2

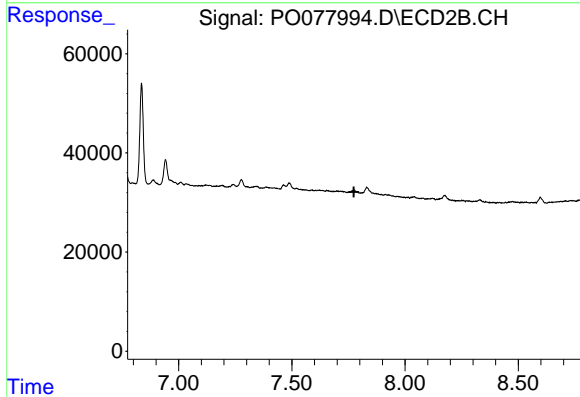
R.T.: 0.000 min
 Exp R.T.: 7.491 min
 Response: 0
 Conc: N.D.



#38 AR-1262-3

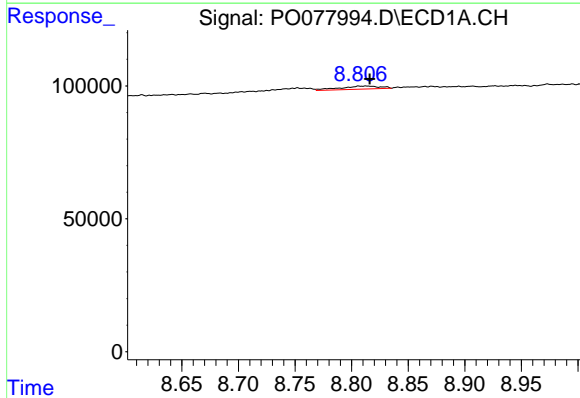
R.T.: 8.752 min
 Delta R.T.: 0.014 min
 Response: 30474
 Conc: 7.55 ng/ml

Instrument :
 ECD_O
 ClientSampleId :



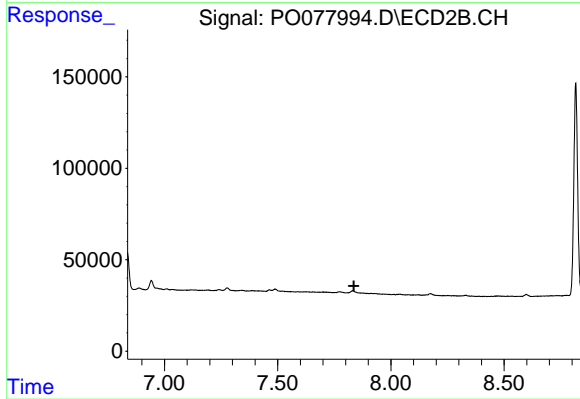
#38 AR-1262-3

R.T.: 0.000 min
 Exp R.T. : 7.774 min
 Response: 0
 Conc: N.D.



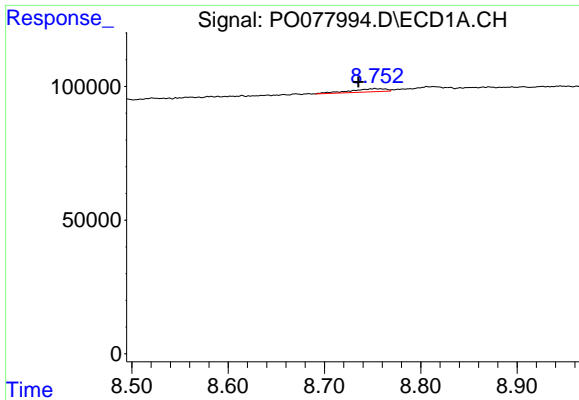
#39 AR-1262-4

R.T.: 8.813 min
 Delta R.T.: -0.003 min
 Response: 28778
 Conc: 9.23 ng/ml



#39 AR-1262-4

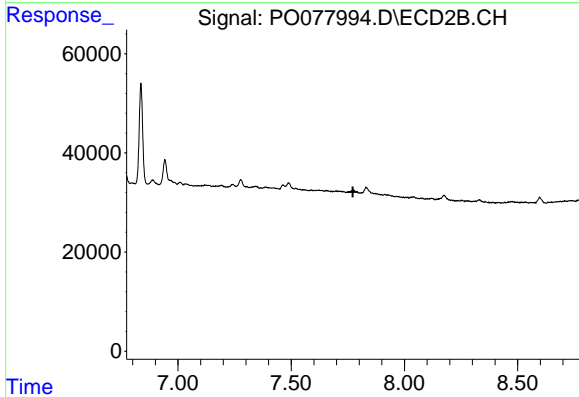
R.T.: 0.000 min
 Exp R.T. : 7.837 min
 Response: 0
 Conc: N.D.



#41 AR-1268-1

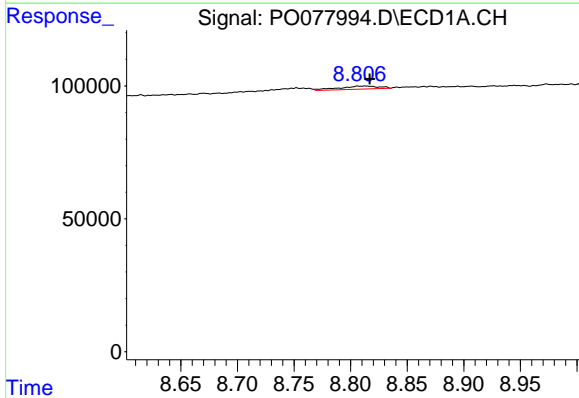
R.T.: 8.752 min
 Delta R.T.: 0.017 min
 Response: 30474
 Conc: 4.30 ng/ml

Instrument :
 ECD_O
 ClientSampled :



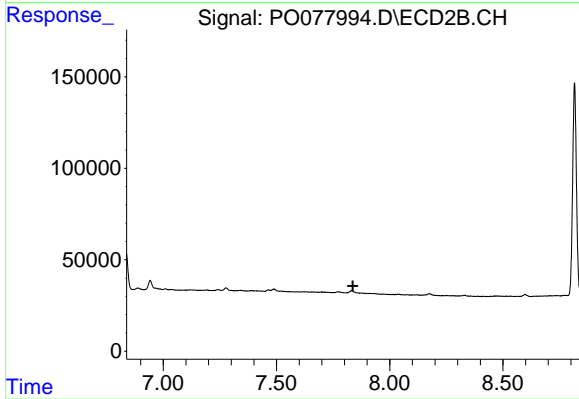
#41 AR-1268-1

R.T.: 0.000 min
 Exp R.T. : 7.772 min
 Response: 0
 Conc: N.D.



#42 AR-1268-2

R.T.: 8.813 min
 Delta R.T.: -0.004 min
 Response: 28778
 Conc: 4.45 ng/ml



#42 AR-1268-2

R.T.: 0.000 min
 Exp R.T. : 7.837 min
 Response: 0
 Conc: N.D.