

Data Path : Z:\pestpcbsrv\HPCHEM1\ECD\_0\Data\P0052119\  
 Data File : P0056415.D  
 Signal(s) : Signal #1: ECD1A.CH Signal #2: ECD2B.CH  
 Acq On : 21 May 2019 7:56  
 Operator : SM/SJ  
 Sample : I.BLK  
 Misc :  
 ALS Vial : 2 Sample Multiplier: 1

Instrument :  
 ECD\_0  
 ClientSampleId :  
 I.BLK

Integration File signal 1: autoint1.e  
 Integration File signal 2: autoint2.e  
 Quant Time: May 21 10:37:40 2019  
 Quant Method : Z:\pestpcbsrv\HPCHEM1\ECD\_0\methods\P0052019.M  
 Quant Title : GC EXTRACTABLES  
 QLast Update : Tue May 21 03:48:44 2019  
 Response via : Initial Calibration  
 Integrator: ChemStation 6890 Scale Mode: Small noise peaks clipped

Volume Inj. : 2 µl  
 Signal #1 Phase : ZB-MR1 Signal #2 Phase: ZB-MR2  
 Signal #1 Info : 30Mx0.32mmx 0.50µ Signal #2 Info : 30M x 0.32mm x 0.25µm

Compound	RT#1	RT#2	Resp#1	Resp#2	ng/ml	ng/ml
-----						
System Monitoring Compounds						
1) SA Tetrachlo...	4.260	3.575	512667	484281	17.801	17.957
2) SA Decachlor...	9.847	8.517	972918	799867	19.067	18.208
Target Compounds						
20) L4 AR-1242-5	6.273	0.000	64125	0	56.289	N.D. #
24) L5 AR-1248-4	6.273	0.000	64125	0	35.166	N.D. #
25) L5 AR-1248-5	6.273	0.000	64125	0	36.524	N.D. #
26) L6 AR-1254-1	6.273	0.000	64125	0	27.417	N.D. #
-----						

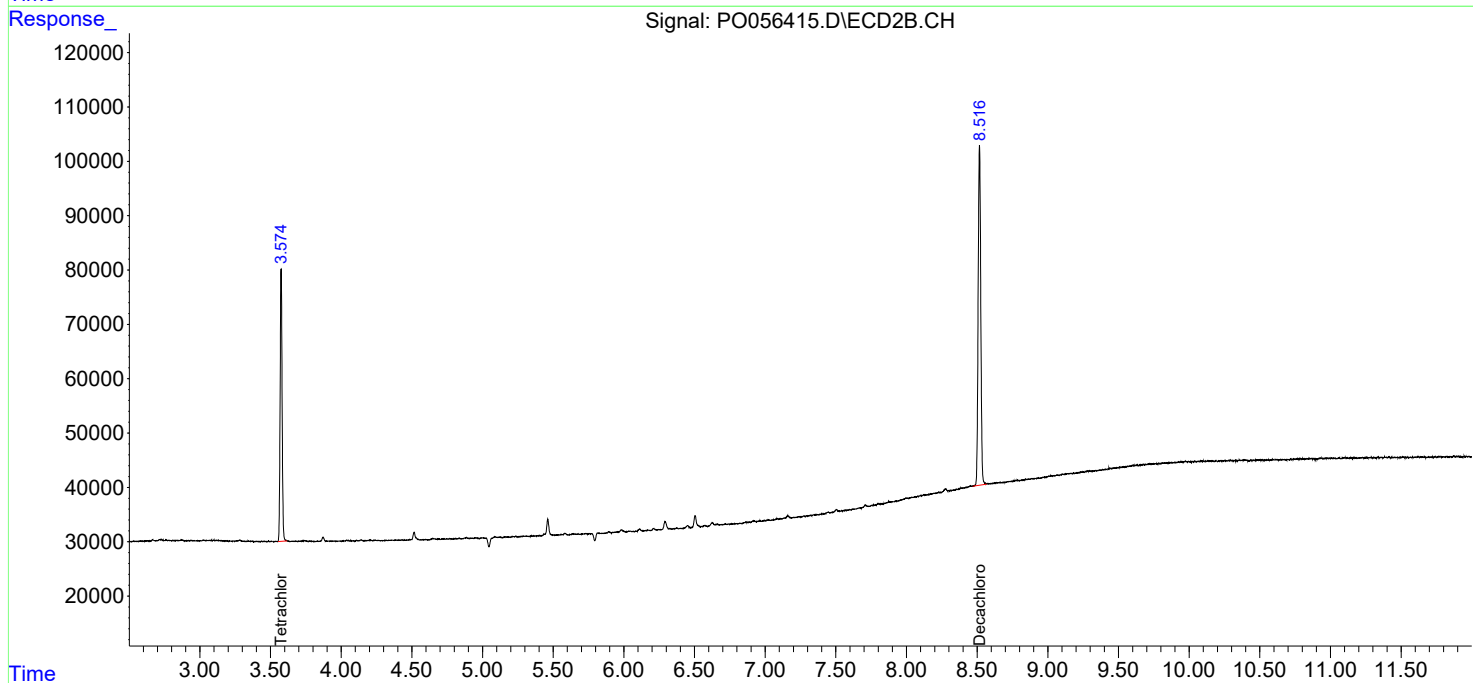
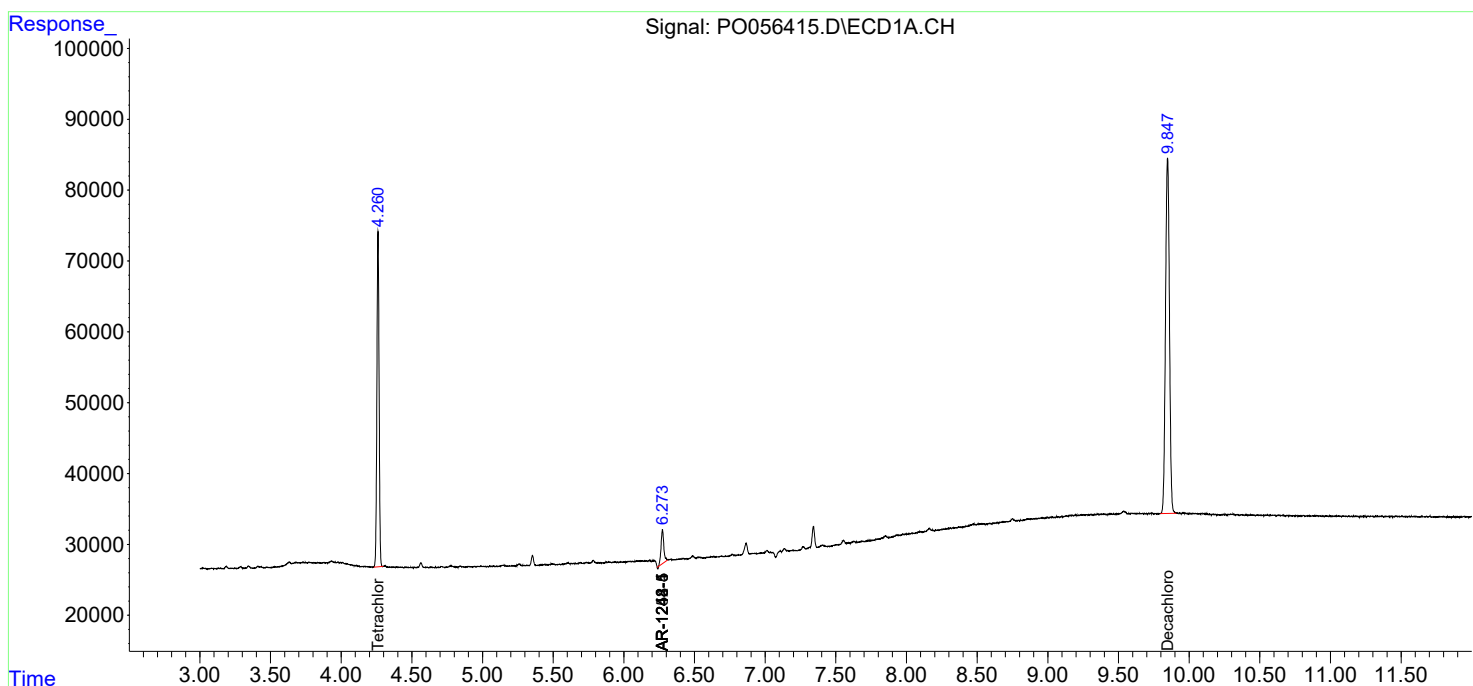
(f)=RT Delta > 1/2 Window (#)=Amounts differ by > 25% (m)=manual int.

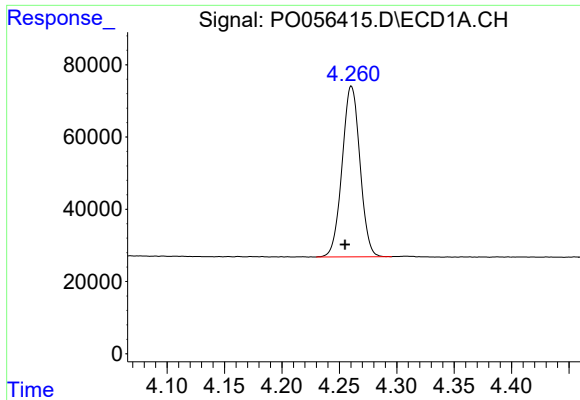
Data Path : Z:\pestpcbsrv\HPCHEM1\ECD\_0\Data\P0052119\  
 Data File : P0056415.D  
 Signal(s) : Signal #1: ECD1A.CH Signal #2: ECD2B.CH  
 Acq On : 21 May 2019 7:56  
 Operator : SM/SJ  
 Sample : I.BLK  
 Misc :  
 ALS Vial : 2 Sample Multiplier: 1

Instrument :  
 ECD\_O  
 ClientSampled :  
 I.BLK

Integration File signal 1: autoint1.e  
 Integration File signal 2: autoint2.e  
 Quant Time: May 21 10:37:40 2019  
 Quant Method : Z:\pestpcbsrv\HPCHEM1\ECD\_0\methods\P0052019.M  
 Quant Title : GC EXTRACTABLES  
 QLast Update : Tue May 21 03:48:44 2019  
 Response via : Initial Calibration  
 Integrator: ChemStation 6890 Scale Mode: Small noise peaks clipped

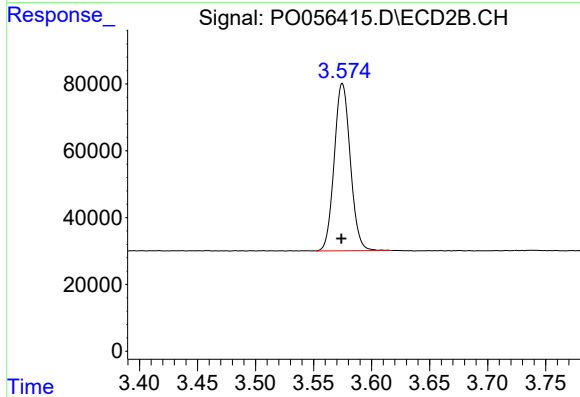
Volume Inj. : 2 µl  
 Signal #1 Phase : ZB-MR1 Signal #2 Phase: ZB-MR2  
 Signal #1 Info : 30Mx0.32mmx 0.50µ Signal #2 Info : 30M x 0.32mm x 0.25µm



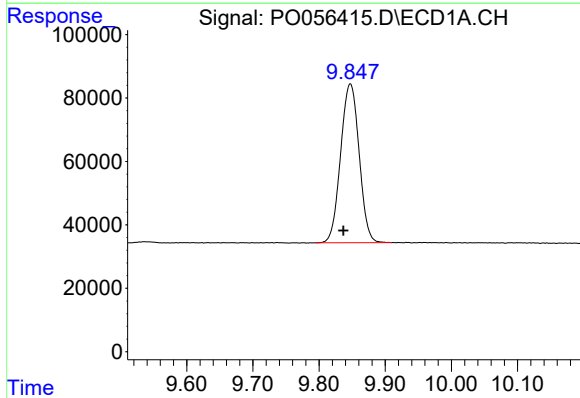


#1 Tetrachloro-m-xylene  
 R.T.: 4.260 min  
 Delta R.T.: 0.005 min  
 Response: 512667  
 Conc: 17.80 ng/ml

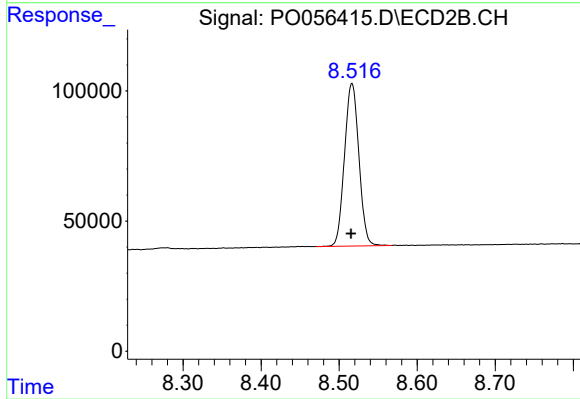
Instrument :  
 ECD\_O  
 ClientSampled :  
 I.BLK



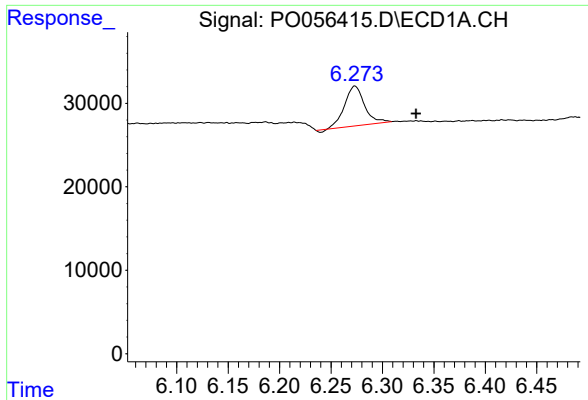
#1 Tetrachloro-m-xylene  
 R.T.: 3.575 min  
 Delta R.T.: 0.000 min  
 Response: 484281  
 Conc: 17.96 ng/ml



#2 Decachlorobiphenyl  
 R.T.: 9.847 min  
 Delta R.T.: 0.010 min  
 Response: 972918  
 Conc: 19.07 ng/ml



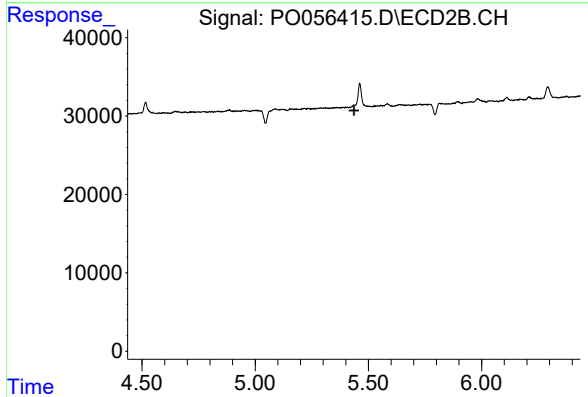
#2 Decachlorobiphenyl  
 R.T.: 8.517 min  
 Delta R.T.: 0.001 min  
 Response: 799867  
 Conc: 18.21 ng/ml



#20 AR-1242-5

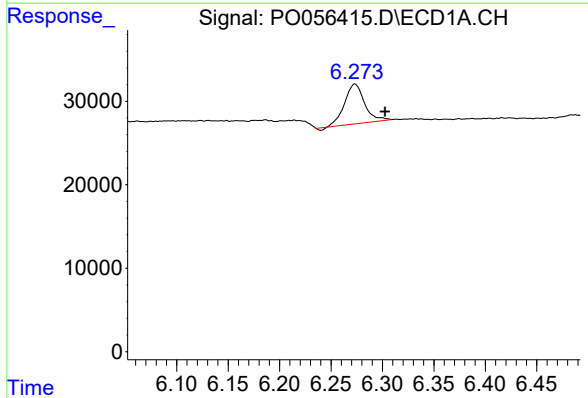
R.T.: 6.273 min  
 Delta R.T.: -0.060 min  
 Response: 64125  
 Conc: 56.29 ng/ml

Instrument :  
 ECD\_O  
 ClientSampled :  
 I.BLK



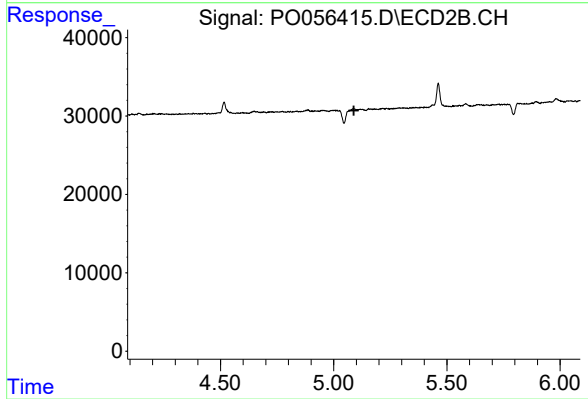
#20 AR-1242-5

R.T.: 0.000 min  
 Exp R.T. : 5.436 min  
 Response: 0  
 Conc: N.D.



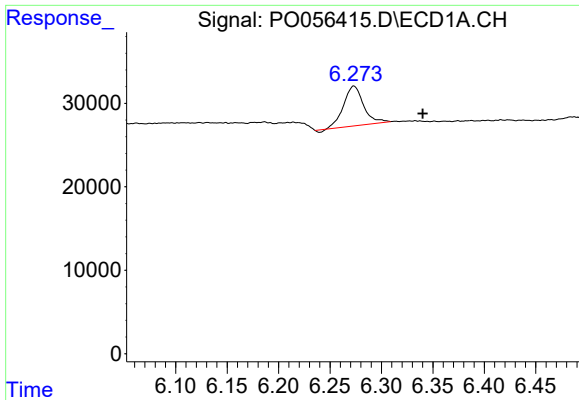
#24 AR-1248-4

R.T.: 6.273 min  
 Delta R.T.: -0.030 min  
 Response: 64125  
 Conc: 35.17 ng/ml



#24 AR-1248-4

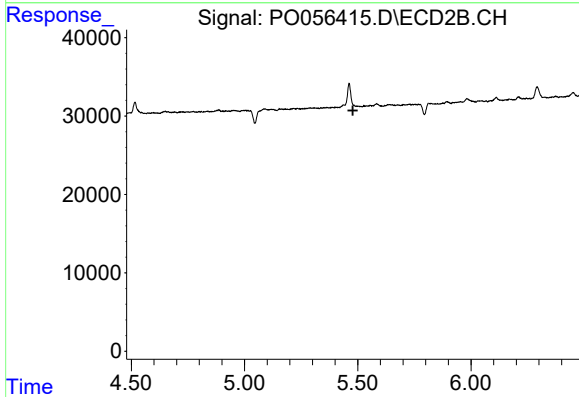
R.T.: 0.000 min  
 Exp R.T. : 5.089 min  
 Response: 0  
 Conc: N.D.



#25 AR-1248-5

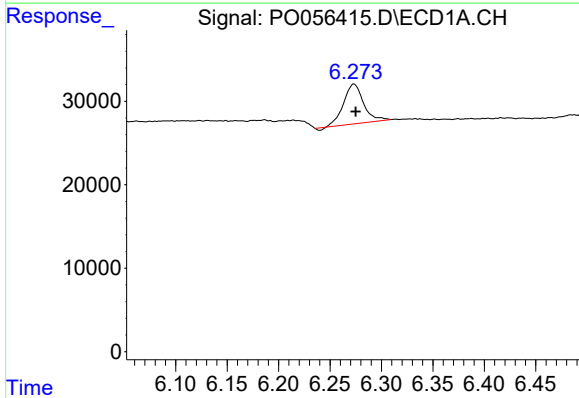
R.T.: 6.273 min  
 Delta R.T.: -0.067 min  
 Response: 64125  
 Conc: 36.52 ng/ml

Instrument :  
 ECD\_O  
 ClientSampled :  
 I.BLK



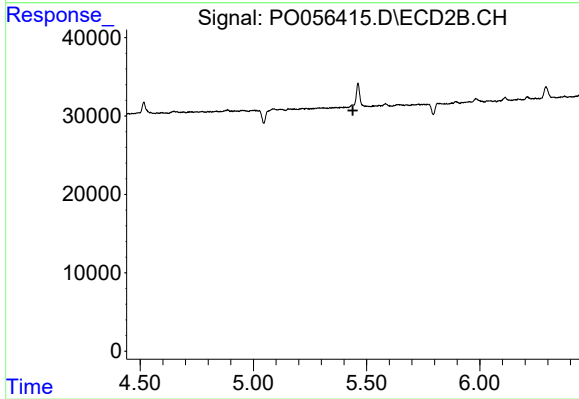
#25 AR-1248-5

R.T.: 0.000 min  
 Exp R.T. : 5.479 min  
 Response: 0  
 Conc: N.D.



#26 AR-1254-1

R.T.: 6.273 min  
 Delta R.T.: -0.002 min  
 Response: 64125  
 Conc: 27.42 ng/ml



#26 AR-1254-1

R.T.: 0.000 min  
 Exp R.T. : 5.439 min  
 Response: 0  
 Conc: N.D.