

Data Path : Z:\pestpcbsrv\HPCHEM1\ECD_0\Data\P0052121\
 Data File : P0078065.D
 Signal(s) : Signal #1: ECD1A.CH Signal #2: ECD2B.CH
 Acq On : 21 May 2021 9:34
 Operator : DD\AJ
 Sample : AR1254CCC500
 Misc :
 ALS Vial : 4 Sample Multiplier: 1

Instrument :
 ECD_0
 ClientSampled :

Integration File signal 1: autoint1.e
 Integration File signal 2: autoint2.e
 Quant Time: May 21 12:55:38 2021
 Quant Method : Z:\pestpcbsrv\HPCHEM1\ECD_0\methods\P0051821.M
 Quant Title : GC EXTRACTABLES
 QLast Update : Wed May 19 06:28:32 2021
 Response via : Initial Calibration
 Integrator: ChemStation 6890 Scale Mode: Small noise peaks clipped

Volume Inj. : 2 µl
 Signal #1 Phase : ZB-MR1 Signal #2 Phase: ZB-MR2
 Signal #1 Info : 30Mx0.32mmx 0.50µ Signal #2 Info : 30M x 0.32mm x 0.25µm

Compound	RT#1	RT#2	Resp#1	Resp#2	ng/ml	ng/ml
System Monitoring Compounds						
1) SA Tetrachlo...	4.345	3.620	3555537	1471556	48.108	48.701
2) SA Decachlor...	9.955	8.811	2249294	1337502	45.495	45.998
Target Compounds						
3) L1 AR-1016-1	5.639	4.850	863700	399499	354.562	365.897
4) L1 AR-1016-2	5.661	4.869	1264047	572097	354.541	368.000
5) L1 AR-1016-3	5.727	5.056	807691	302458	364.494	369.519
6) L1 AR-1016-4	5.830	5.110	651798	259406	373.413	364.681
7) L1 AR-1016-5	6.142	5.333	656126	333777	379.273	378.613
8) L2 AR-1221-1	4.591	3.872	89695	43847	108.977	114.779
9) L2 AR-1221-2	4.690	3.969	145579	65516	236.883	237.836
10) L2 AR-1221-3	4.776	4.055	518671	233062	260.065	261.328
11) L3 AR-1232-1	4.776	4.055	518671	233062	339.086	335.277
12) L3 AR-1232-2	5.349	4.869	683287	572097	866.806	859.975
13) L3 AR-1232-3	5.661	5.056	1264047	302458	870.569	890.027
14) L3 AR-1232-4	5.830	5.152	651798	311266	907.679	982.572
15) L3 AR-1232-5	5.930	5.333	521160	333777	1061.435	959.292
16) L4 AR-1242-1	5.639	4.850	863700	399499	470.136	465.123
17) L4 AR-1242-2	5.661	4.869	1264047	572097	467.927	472.835
18) L4 AR-1242-3	5.727	5.056	807691	302458	464.051	469.465
19) L4 AR-1242-4	5.830	5.152	651798	311266	466.231	460.417
20) L4 AR-1242-5	6.601	5.708	641976	395772	479.756	482.645
21) L5 AR-1248-1	5.639	4.850	863700	399499	606.147	619.912
22) L5 AR-1248-2	5.930	5.110	521160	259406	274.511	271.361
23) L5 AR-1248-3	6.142	5.152	656126	311266	295.812	323.818
24) L5 AR-1248-4	6.563	5.333	618242	333777	265.609	291.441
25) L5 AR-1248-5	6.601	5.749	641976	317273	283.737	302.786
26) L6 AR-1254-1	6.533	5.708	483882	395772	194.957	229.487
27) L6 AR-1254-2	6.763	5.865	575061	115821	148.191	72.254 #
28) L6 AR-1254-3	7.135	6.278	257133	152499	65.539	63.894
29) L6 AR-1254-4	7.428	6.516	199225	98344	73.361	67.736
30) L6 AR-1254-5	7.850	6.938	88818	53651	30.371	23.604
31) L7 AR-1260-1	7.301	6.420	56770	85889	20.230	53.605 #
32) L7 AR-1260-2	7.563	6.610	80477	19969	23.922	10.344 #
33) L7 AR-1260-3	0.000	6.758	0	34513	N.D.	18.812 #
34) L7 AR-1260-4	8.141	0.000	20410	0	7.619	N.D. #
35) L7 AR-1260-5	8.461	0.000	85134	0	16.576	N.D. #
36) L8 AR-1262-1	0.000	6.938	0	53651	N.D.	45.723 #
37) L8 AR-1262-2	8.461	0.000	85134	0	14.143	N.D. #
39) L8 AR-1262-4	8.804	0.000	9188	0	2.946	N.D. #
42) L9 AR-1268-2	8.804	0.000	9188	0	1.420	N.D. #

Data Path : Z:\pestpcbsrv\HPCHEM1\ECD_O\Data\P0052121\
Data File : P0078065.D
Signal(s) : Signal #1: ECD1A.CH Signal #2: ECD2B.CH
Acq On : 21 May 2021 9:34
Operator : DD\AJ
Sample : AR1254CCC500
Misc :
ALS Vial : 4 Sample Multiplier: 1

Instrument :
ECD_O
ClientSampleId :

Integration File signal 1: autoint1.e
Integration File signal 2: autoint2.e
Quant Time: May 21 12:55:38 2021
Quant Method : Z:\pestpcbsrv\HPCHEM1\ECD_O\methods\P0051821.M
Quant Title : GC EXTRACTABLES
QLast Update : Wed May 19 06:28:32 2021
Response via : Initial Calibration
Integrator: ChemStation 6890 Scale Mode: Small noise peaks clipped

Volume Inj. : 2 µl
Signal #1 Phase : ZB-MR1 Signal #2 Phase: ZB-MR2
Signal #1 Info : 30Mx0.32mmx 0.50µ Signal #2 Info : 30M x 0.32mm x 0.25µm

Compound	RT#1	RT#2	Resp#1	Resp#2	ng/ml	ng/ml
----------	------	------	--------	--------	-------	-------

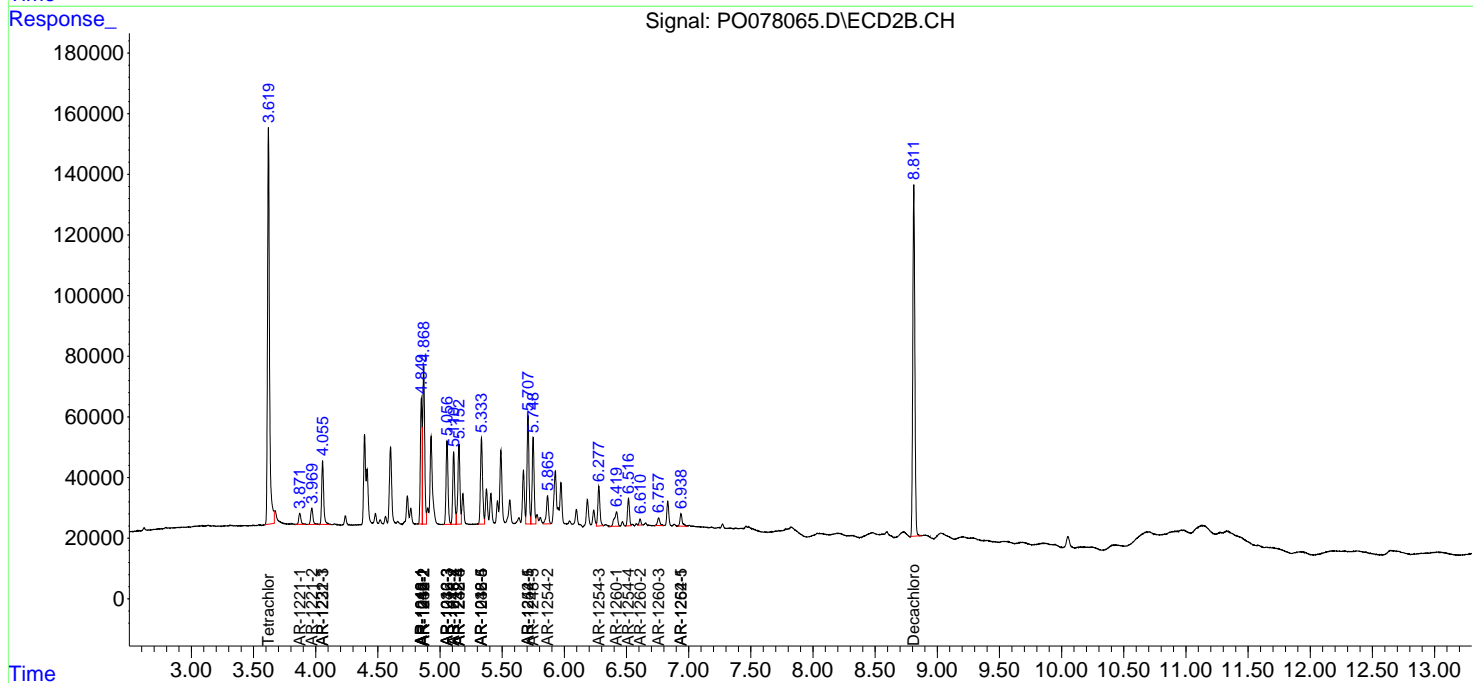
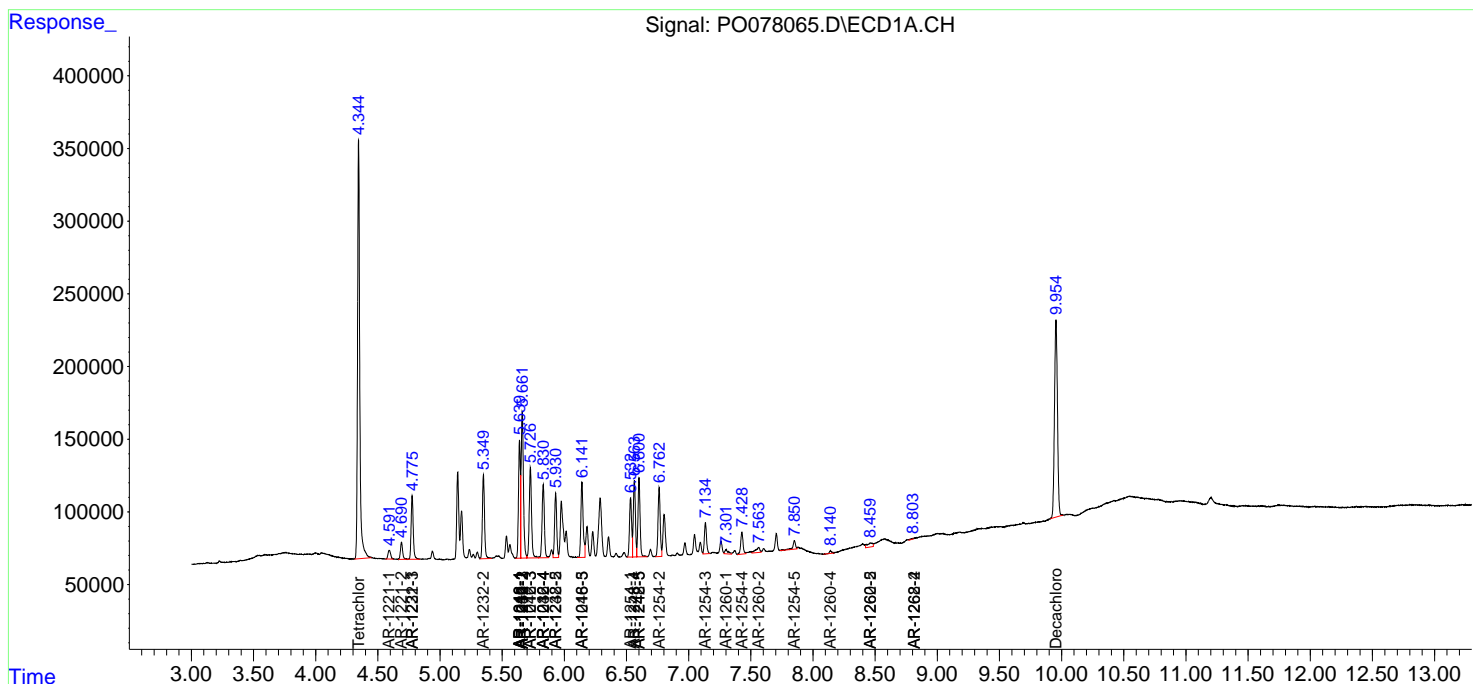
(f)=RT Delta > 1/2 Window (#)=Amounts differ by > 25% (m)=manual int.

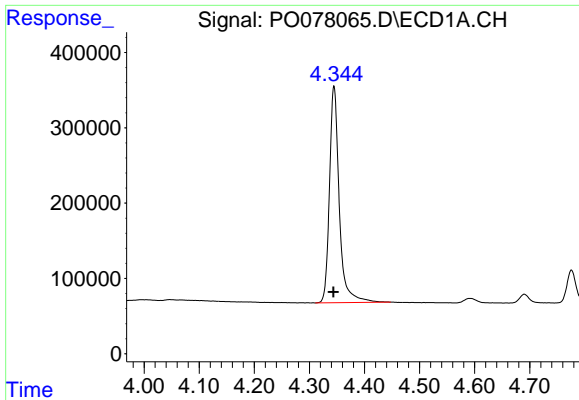
Data Path : Z:\pestpcbsrv\HPCHEM1\ECD_O\Data\P0052121\
 Data File : P0078065.D
 Signal(s) : Signal #1: ECD1A.CH Signal #2: ECD2B.CH
 Acq On : 21 May 2021 9:34
 Operator : DD\AJ
 Sample : AR1254CCC500
 Misc :
 ALS Vial : 4 Sample Multiplier: 1

Instrument :
 ECD_O
 ClientSampled :

Integration File signal 1: autoint1.e
 Integration File signal 2: autoint2.e
 Quant Time: May 21 12:55:38 2021
 Quant Method : Z:\pestpcbsrv\HPCHEM1\ECD_O\methods\P0051821.M
 Quant Title : GC EXTRACTABLES
 QLast Update : Wed May 19 06:28:32 2021
 Response via : Initial Calibration
 Integrator: ChemStation 6890 Scale Mode: Small noise peaks clipped

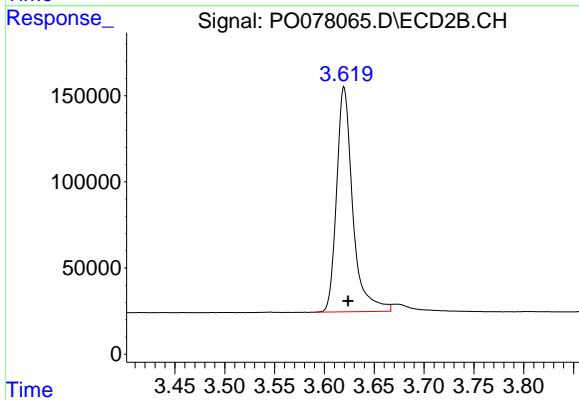
Volume Inj. : 2 µl
 Signal #1 Phase : ZB-MR1 Signal #2 Phase: ZB-MR2
 Signal #1 Info : 30Mx0.32mmx 0.50µ Signal #2 Info : 30M x 0.32mm x 0.25µm



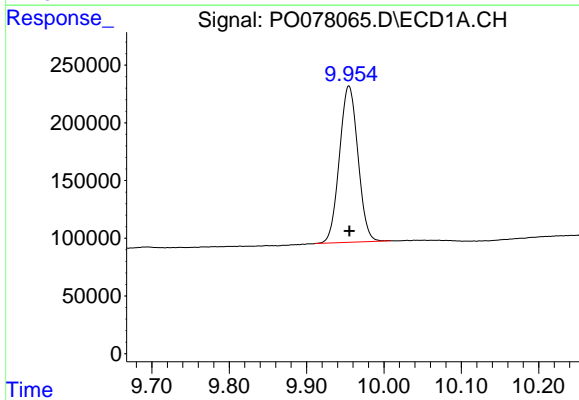


#1 Tetrachloro-m-xylene
 R.T.: 4.345 min
 Delta R.T.: 0.000 min
 Response: 3555537
 Conc: 48.11 ng/ml

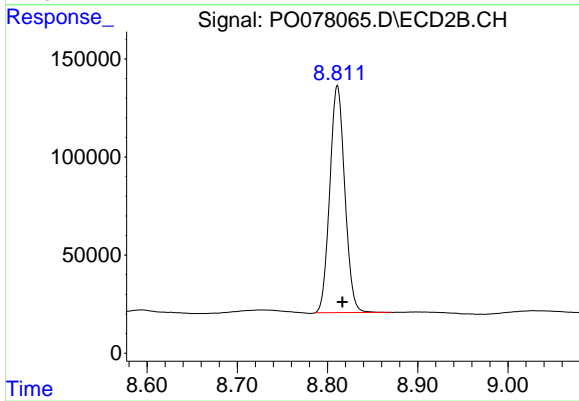
Instrument :
 ECD_O
 ClientSampleId :



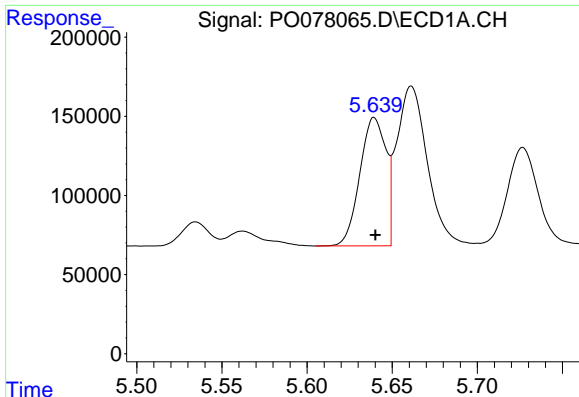
#1 Tetrachloro-m-xylene
 R.T.: 3.620 min
 Delta R.T.: -0.004 min
 Response: 1471556
 Conc: 48.70 ng/ml



#2 Decachlorobiphenyl
 R.T.: 9.955 min
 Delta R.T.: 0.000 min
 Response: 2249294
 Conc: 45.49 ng/ml



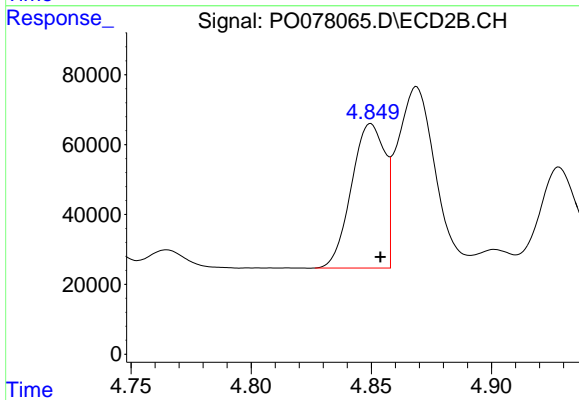
#2 Decachlorobiphenyl
 R.T.: 8.811 min
 Delta R.T.: -0.005 min
 Response: 1337502
 Conc: 46.00 ng/ml



#3 AR-1016-1

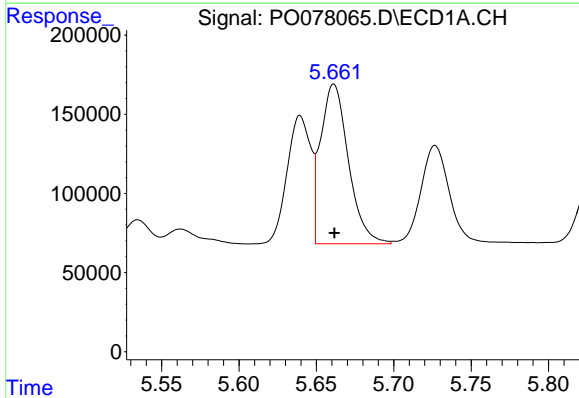
R.T.: 5.639 min
 Delta R.T.: 0.000 min
 Response: 863700
 Conc: 354.56 ng/ml

Instrument :
 ECD_O
 ClientSampled :



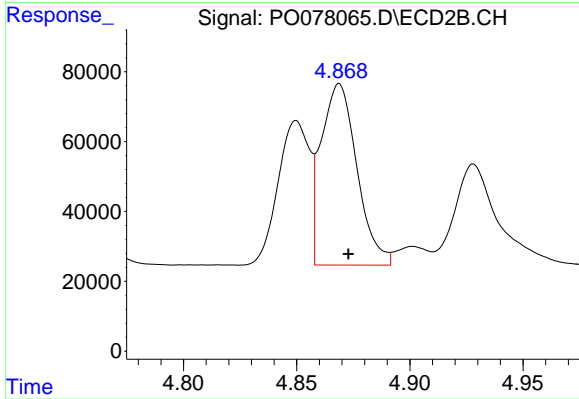
#3 AR-1016-1

R.T.: 4.850 min
 Delta R.T.: -0.004 min
 Response: 399499
 Conc: 365.90 ng/ml



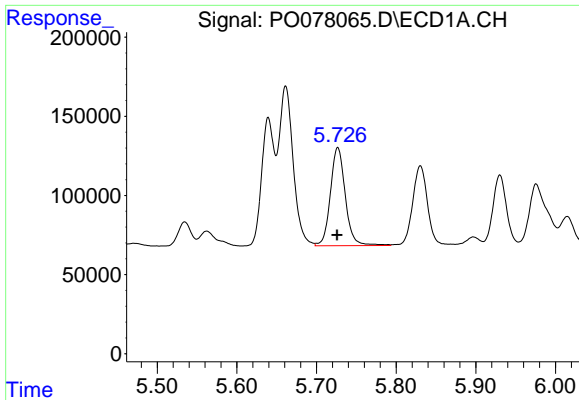
#4 AR-1016-2

R.T.: 5.661 min
 Delta R.T.: 0.000 min
 Response: 1264047
 Conc: 354.54 ng/ml



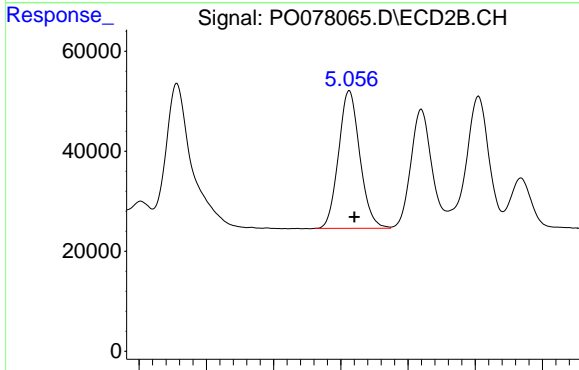
#4 AR-1016-2

R.T.: 4.869 min
 Delta R.T.: -0.004 min
 Response: 572097
 Conc: 368.00 ng/ml

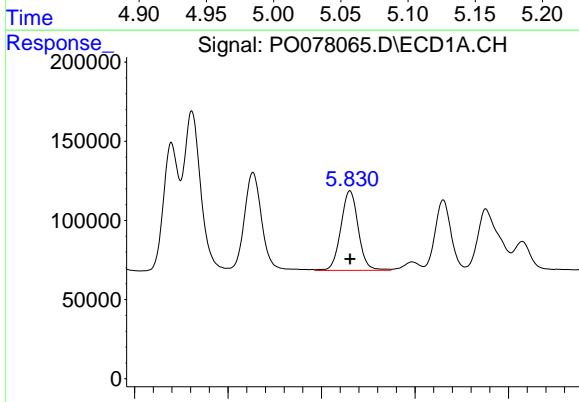


#5 AR-1016-3
 R.T.: 5.727 min
 Delta R.T.: 0.000 min
 Response: 807691
 Conc: 364.49 ng/ml

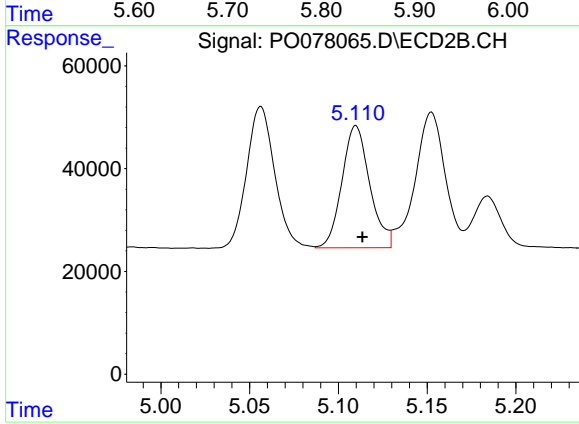
Instrument :
 ECD_O
 ClientSampled :



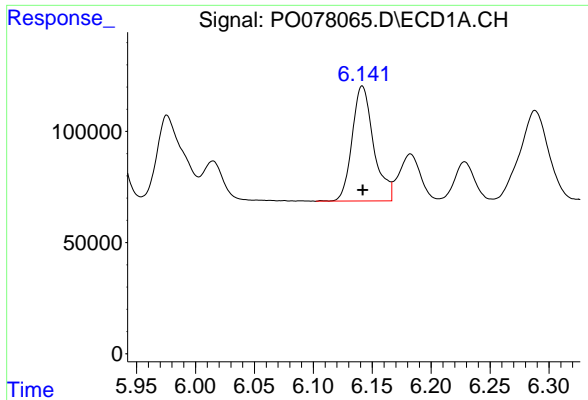
#5 AR-1016-3
 R.T.: 5.056 min
 Delta R.T.: -0.004 min
 Response: 302458
 Conc: 369.52 ng/ml



#6 AR-1016-4
 R.T.: 5.830 min
 Delta R.T.: 0.000 min
 Response: 651798
 Conc: 373.41 ng/ml



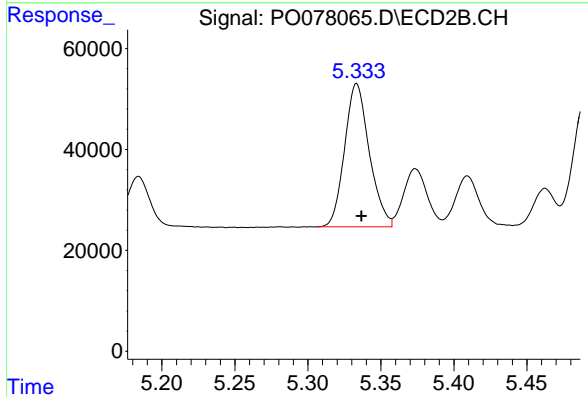
#6 AR-1016-4
 R.T.: 5.110 min
 Delta R.T.: -0.004 min
 Response: 259406
 Conc: 364.68 ng/ml



#7 AR-1016-5

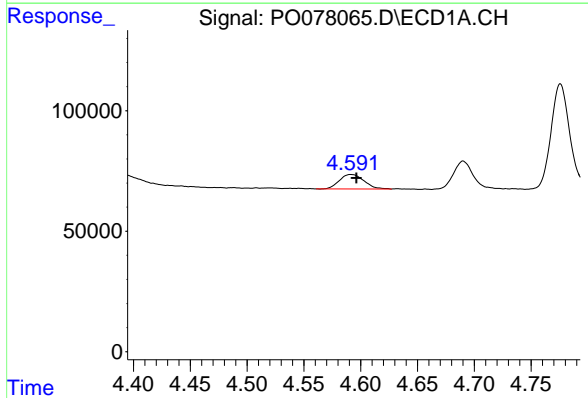
R.T.: 6.142 min
 Delta R.T.: 0.000 min
 Response: 656126
 Conc: 379.27 ng/ml

Instrument :
 ECD_O
 ClientSampleId :



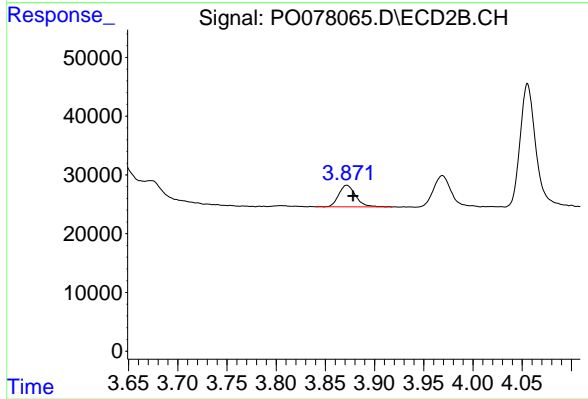
#7 AR-1016-5

R.T.: 5.333 min
 Delta R.T.: -0.003 min
 Response: 333777
 Conc: 378.61 ng/ml



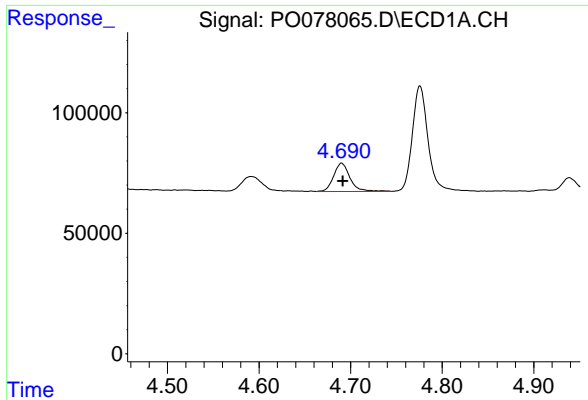
#8 AR-1221-1

R.T.: 4.591 min
 Delta R.T.: -0.005 min
 Response: 89695
 Conc: 108.98 ng/ml



#8 AR-1221-1

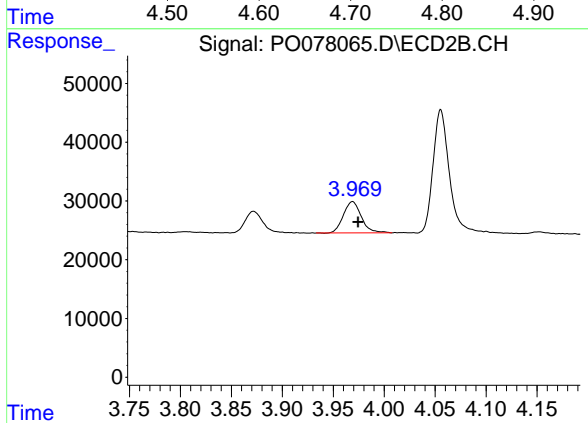
R.T.: 3.872 min
 Delta R.T.: -0.006 min
 Response: 43847
 Conc: 114.78 ng/ml



#9 AR-1221-2

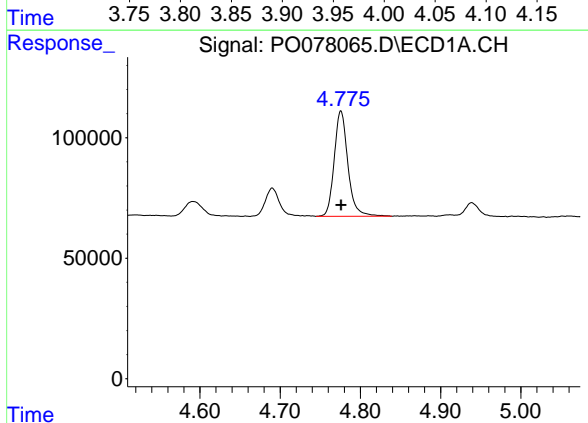
R.T.: 4.690 min
 Delta R.T.: -0.001 min
 Response: 145579
 Conc: 236.88 ng/ml

Instrument :
 ECD_O
 ClientSampleId :



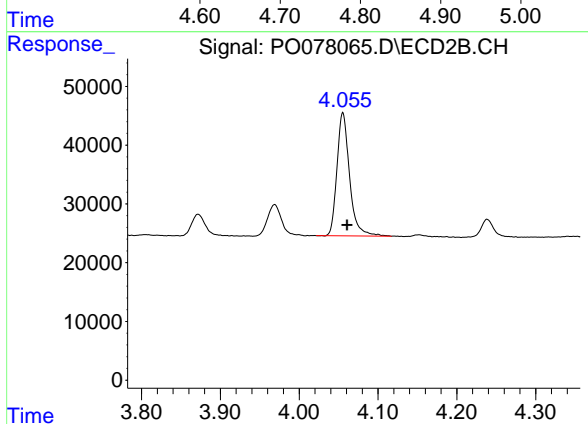
#9 AR-1221-2

R.T.: 3.969 min
 Delta R.T.: -0.006 min
 Response: 65516
 Conc: 237.84 ng/ml



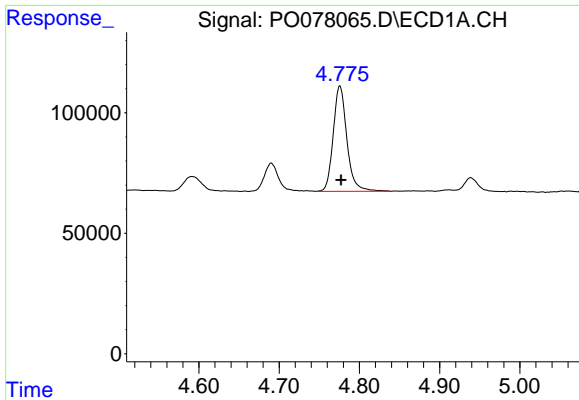
#10 AR-1221-3

R.T.: 4.776 min
 Delta R.T.: 0.000 min
 Response: 518671
 Conc: 260.06 ng/ml



#10 AR-1221-3

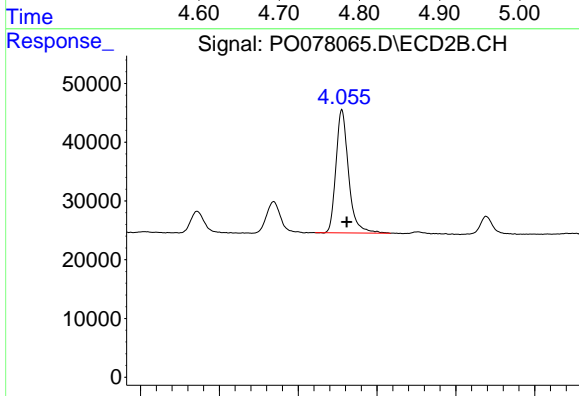
R.T.: 4.055 min
 Delta R.T.: -0.005 min
 Response: 233062
 Conc: 261.33 ng/ml



#11 AR-1232-1

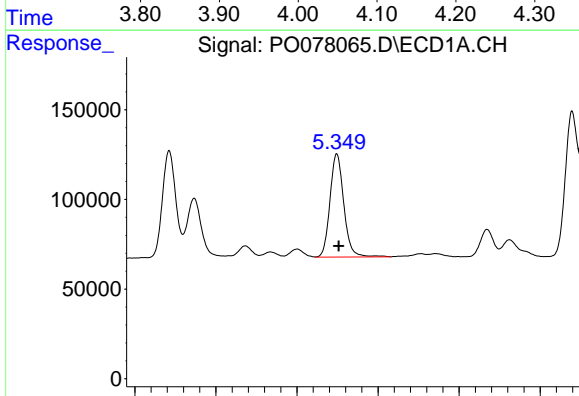
R.T.: 4.776 min
 Delta R.T.: -0.001 min
 Response: 518671
 Conc: 339.09 ng/ml

Instrument :
 ECD_O
 ClientSampleId :



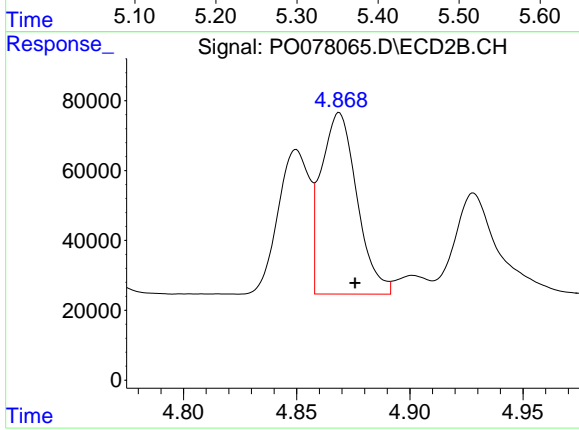
#11 AR-1232-1

R.T.: 4.055 min
 Delta R.T.: -0.006 min
 Response: 233062
 Conc: 335.28 ng/ml



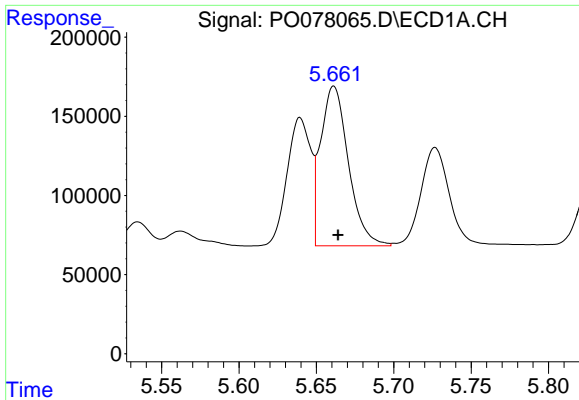
#12 AR-1232-2

R.T.: 5.349 min
 Delta R.T.: -0.002 min
 Response: 683287
 Conc: 866.81 ng/ml



#12 AR-1232-2

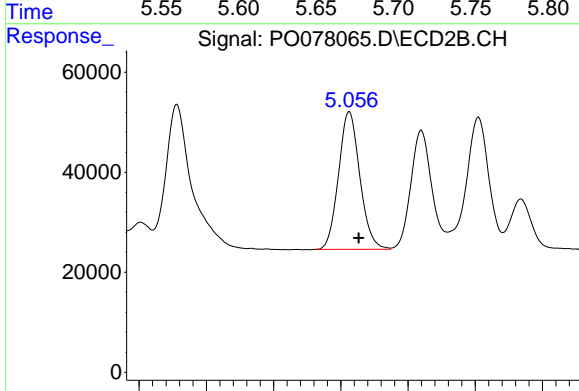
R.T.: 4.869 min
 Delta R.T.: -0.007 min
 Response: 572097
 Conc: 859.98 ng/ml



#13 AR-1232-3

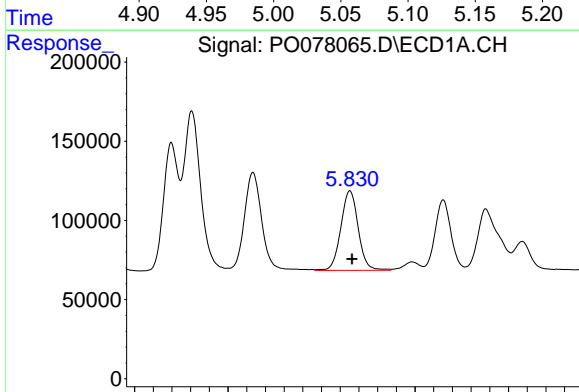
R.T.: 5.661 min
 Delta R.T.: -0.003 min
 Response: 1264047
 Conc: 870.57 ng/ml

Instrument :
 ECD_O
 ClientSampled :



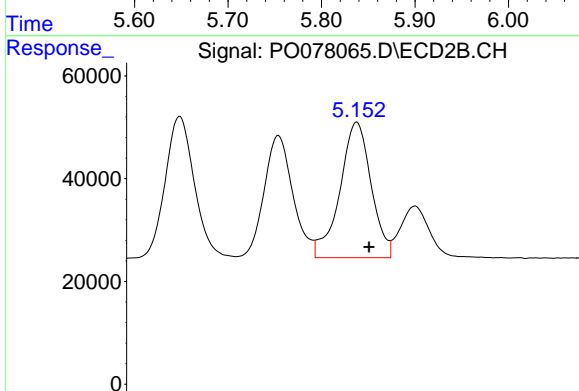
#13 AR-1232-3

R.T.: 5.056 min
 Delta R.T.: -0.007 min
 Response: 302458
 Conc: 890.03 ng/ml



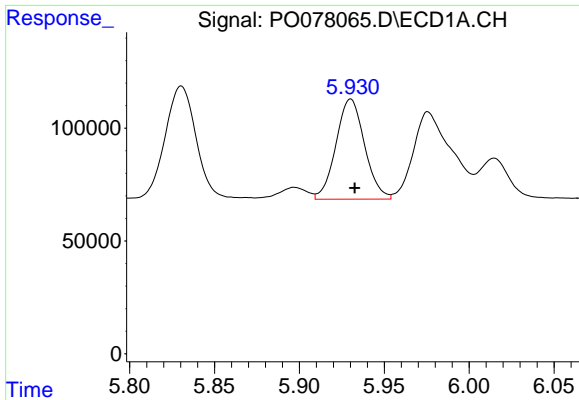
#14 AR-1232-4

R.T.: 5.830 min
 Delta R.T.: -0.002 min
 Response: 651798
 Conc: 907.68 ng/ml



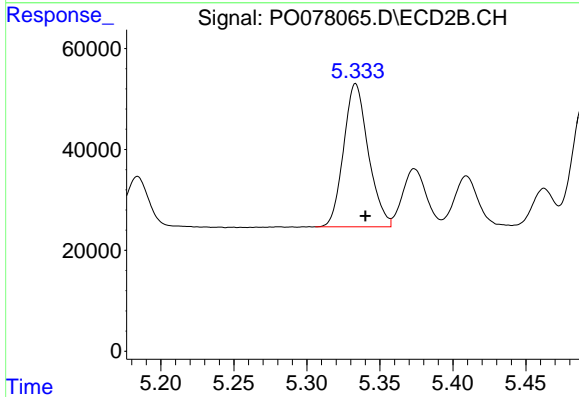
#14 AR-1232-4

R.T.: 5.152 min
 Delta R.T.: -0.007 min
 Response: 311266
 Conc: 982.57 ng/ml

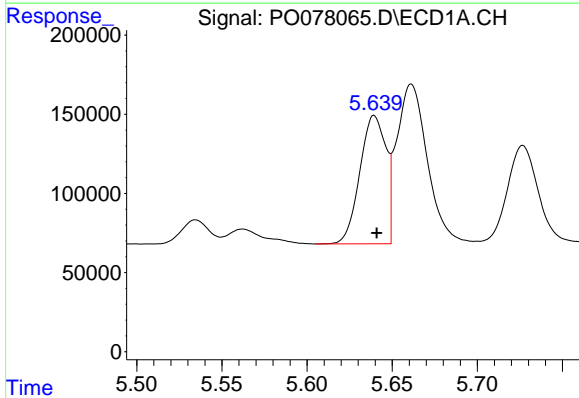


#15 AR-1232-5
 R.T.: 5.930 min
 Delta R.T.: -0.002 min
 Response: 521160
 Conc: 1061.43 ng/ml

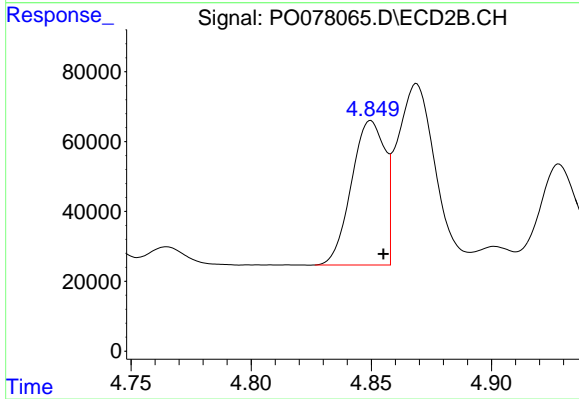
Instrument :
 ECD_O
 ClientSampleId :



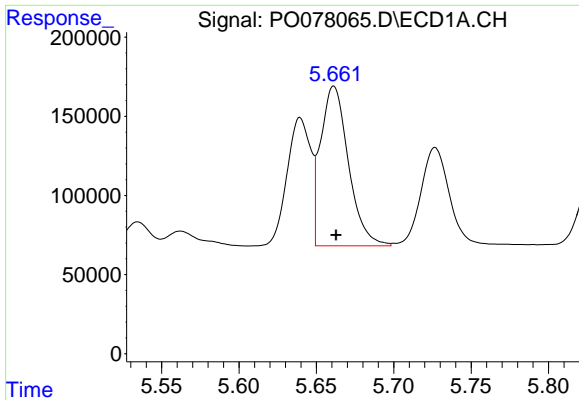
#15 AR-1232-5
 R.T.: 5.333 min
 Delta R.T.: -0.007 min
 Response: 333777
 Conc: 959.29 ng/ml



#16 AR-1242-1
 R.T.: 5.639 min
 Delta R.T.: -0.001 min
 Response: 863700
 Conc: 470.14 ng/ml



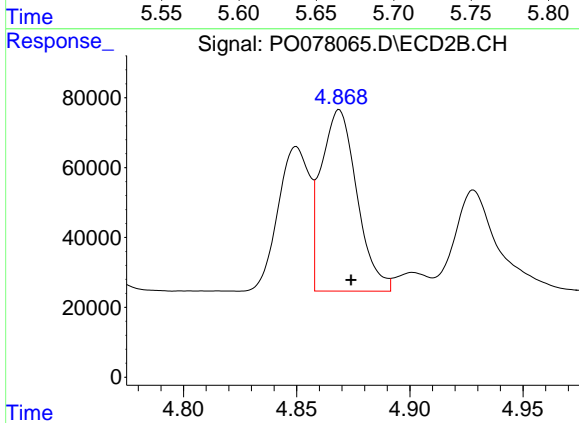
#16 AR-1242-1
 R.T.: 4.850 min
 Delta R.T.: -0.005 min
 Response: 399499
 Conc: 465.12 ng/ml



#17 AR-1242-2

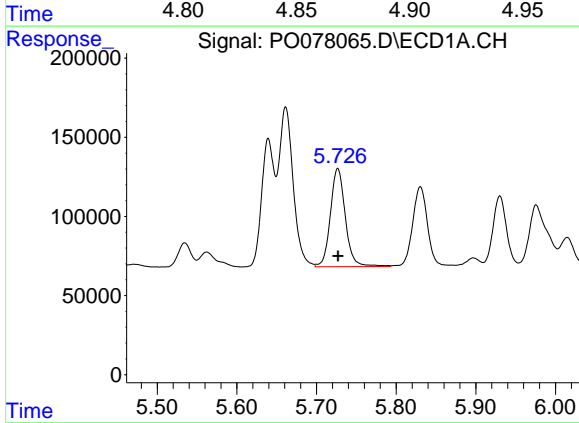
R.T.: 5.661 min
 Delta R.T.: -0.002 min
 Response: 1264047
 Conc: 467.93 ng/ml

Instrument :
 ECD_O
 ClientSampled :



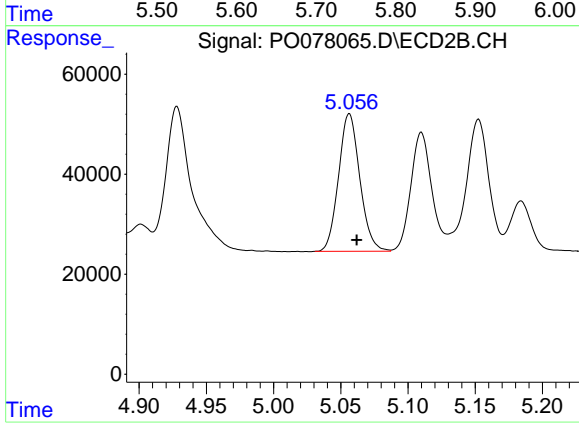
#17 AR-1242-2

R.T.: 4.869 min
 Delta R.T.: -0.005 min
 Response: 572097
 Conc: 472.83 ng/ml



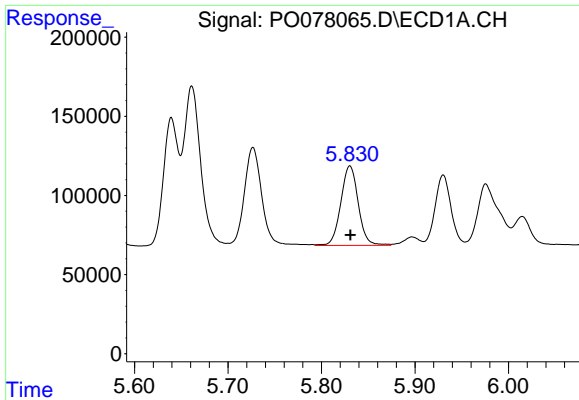
#18 AR-1242-3

R.T.: 5.727 min
 Delta R.T.: 0.000 min
 Response: 807691
 Conc: 464.05 ng/ml



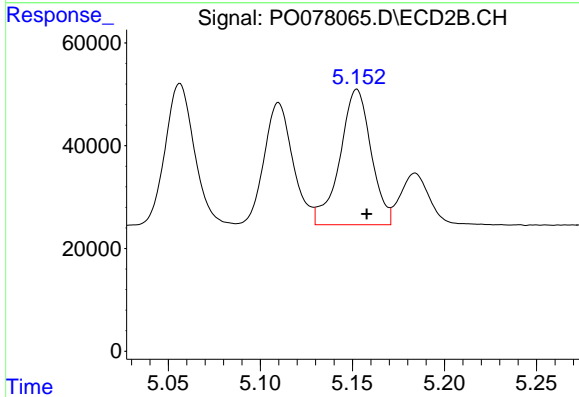
#18 AR-1242-3

R.T.: 5.056 min
 Delta R.T.: -0.006 min
 Response: 302458
 Conc: 469.47 ng/ml

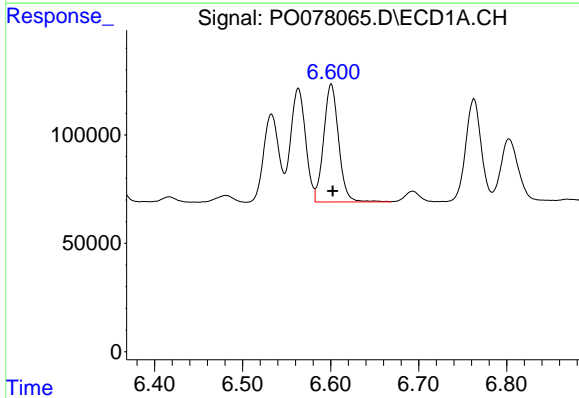


#19 AR-1242-4
 R.T.: 5.830 min
 Delta R.T.: 0.000 min
 Response: 651798
 Conc: 466.23 ng/ml

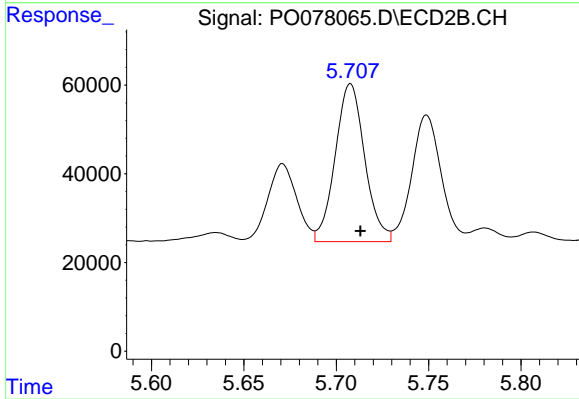
Instrument :
 ECD_O
 ClientSampleId :



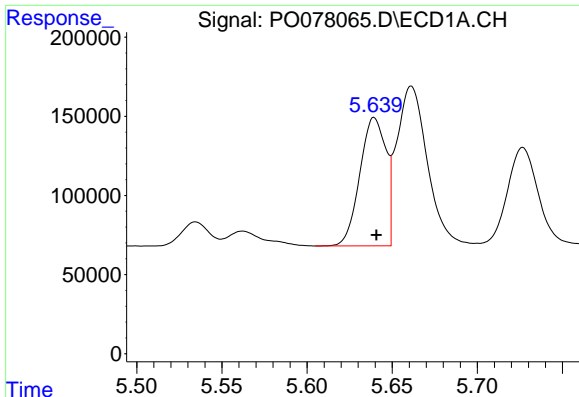
#19 AR-1242-4
 R.T.: 5.152 min
 Delta R.T.: -0.005 min
 Response: 311266
 Conc: 460.42 ng/ml



#20 AR-1242-5
 R.T.: 6.601 min
 Delta R.T.: -0.002 min
 Response: 641976
 Conc: 479.76 ng/ml



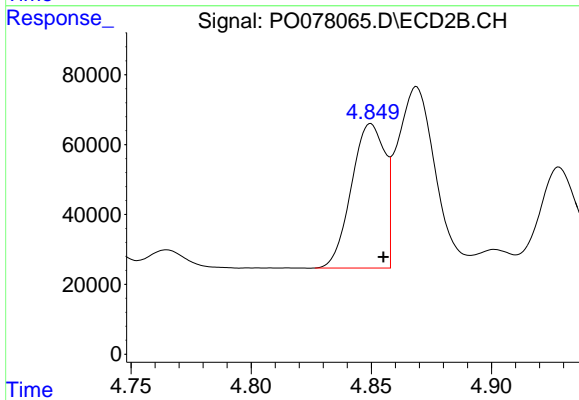
#20 AR-1242-5
 R.T.: 5.708 min
 Delta R.T.: -0.005 min
 Response: 395772
 Conc: 482.64 ng/ml



#21 AR-1248-1

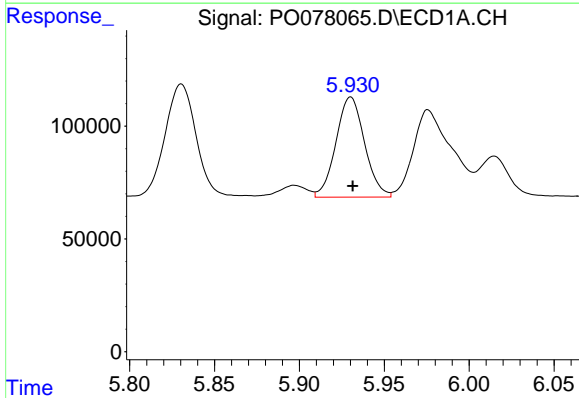
R.T.: 5.639 min
 Delta R.T.: -0.001 min
 Response: 863700
 Conc: 606.15 ng/ml

Instrument :
 ECD_O
 ClientSampled :



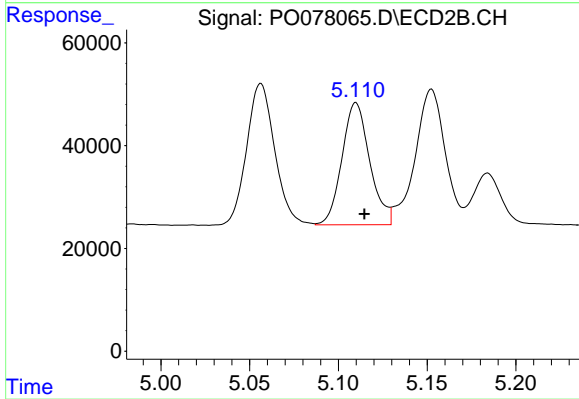
#21 AR-1248-1

R.T.: 4.850 min
 Delta R.T.: -0.005 min
 Response: 399499
 Conc: 619.91 ng/ml



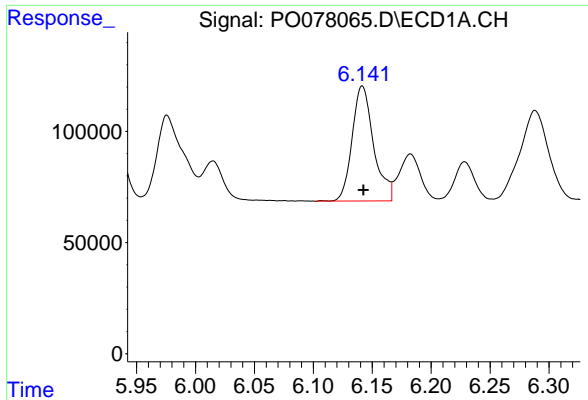
#22 AR-1248-2

R.T.: 5.930 min
 Delta R.T.: -0.001 min
 Response: 521160
 Conc: 274.51 ng/ml



#22 AR-1248-2

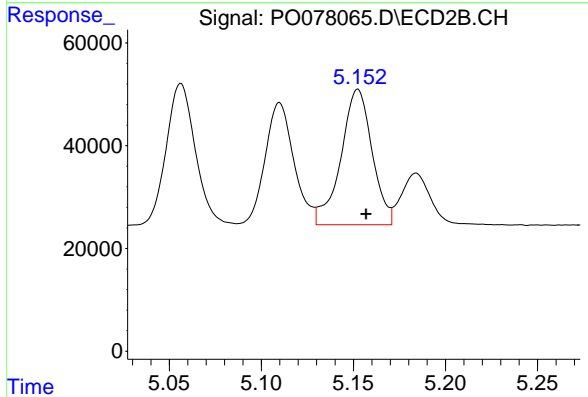
R.T.: 5.110 min
 Delta R.T.: -0.005 min
 Response: 259406
 Conc: 271.36 ng/ml



#23 AR-1248-3

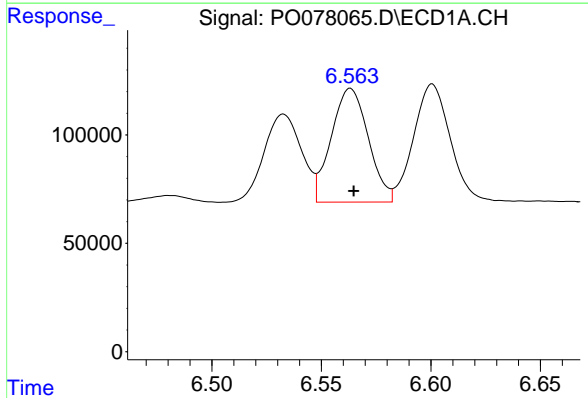
R.T.: 6.142 min
 Delta R.T.: 0.000 min
 Response: 656126
 Conc: 295.81 ng/ml

Instrument :
 ECD_O
 ClientSampleId :



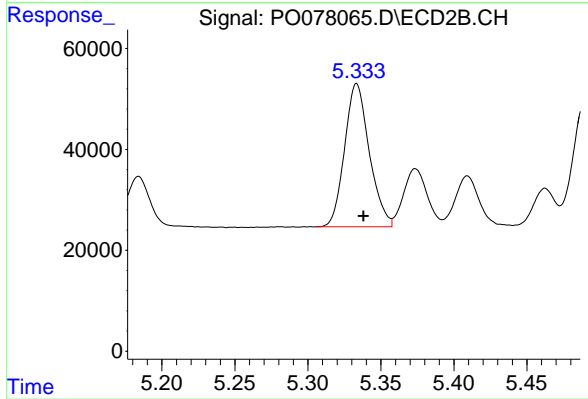
#23 AR-1248-3

R.T.: 5.152 min
 Delta R.T.: -0.004 min
 Response: 311266
 Conc: 323.82 ng/ml



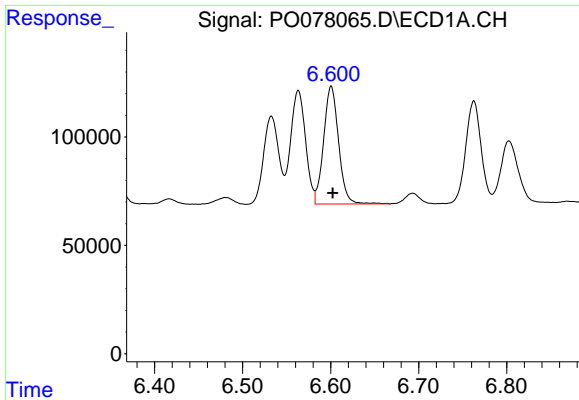
#24 AR-1248-4

R.T.: 6.563 min
 Delta R.T.: -0.002 min
 Response: 618242
 Conc: 265.61 ng/ml



#24 AR-1248-4

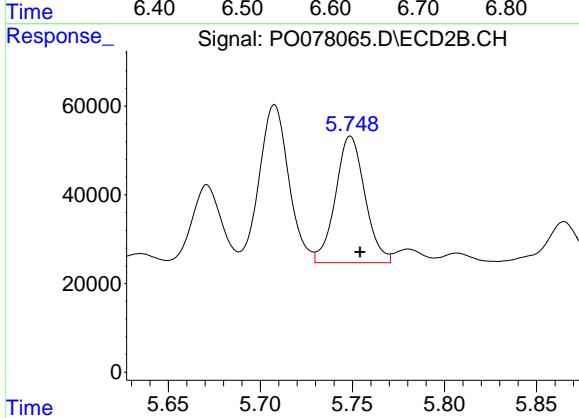
R.T.: 5.333 min
 Delta R.T.: -0.005 min
 Response: 333777
 Conc: 291.44 ng/ml



#25 AR-1248-5

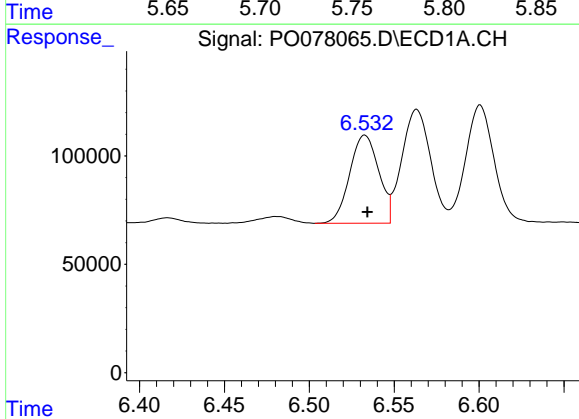
R.T.: 6.601 min
 Delta R.T.: -0.002 min
 Response: 641976
 Conc: 283.74 ng/ml

Instrument :
 ECD_O
 ClientSampled :



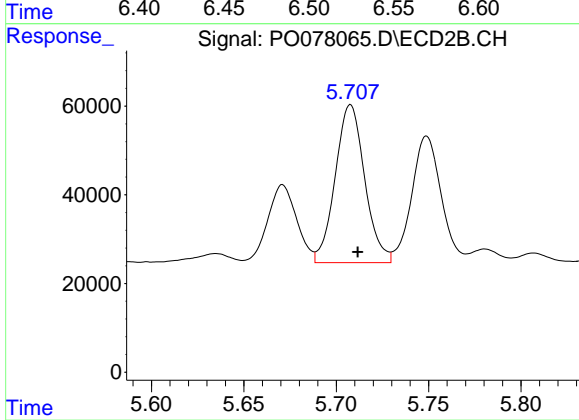
#25 AR-1248-5

R.T.: 5.749 min
 Delta R.T.: -0.005 min
 Response: 317273
 Conc: 302.79 ng/ml



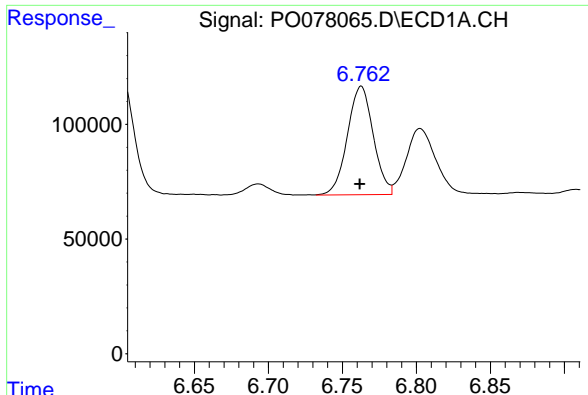
#26 AR-1254-1

R.T.: 6.533 min
 Delta R.T.: -0.001 min
 Response: 483882
 Conc: 194.96 ng/ml



#26 AR-1254-1

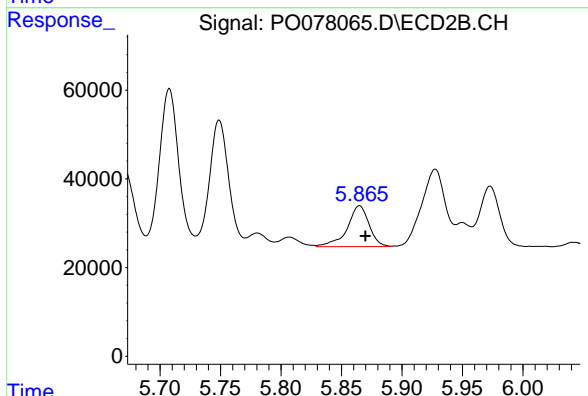
R.T.: 5.708 min
 Delta R.T.: -0.004 min
 Response: 395772
 Conc: 229.49 ng/ml



#27 AR-1254-2

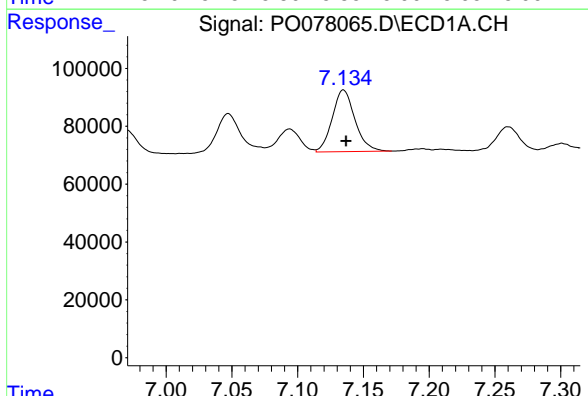
R.T.: 6.763 min
 Delta R.T.: 0.000 min
 Response: 575061
 Conc: 148.19 ng/ml

Instrument :
 ECD_O
 ClientSampled :



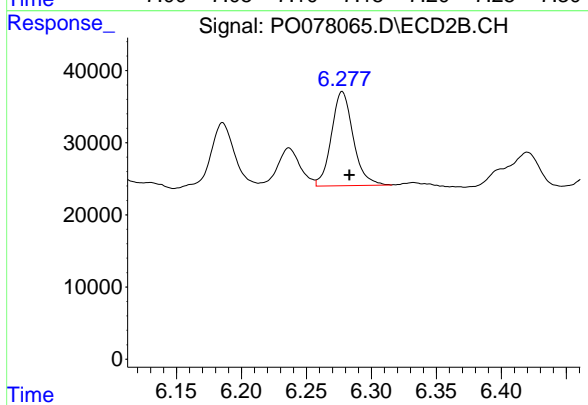
#27 AR-1254-2

R.T.: 5.865 min
 Delta R.T.: -0.005 min
 Response: 115821
 Conc: 72.25 ng/ml



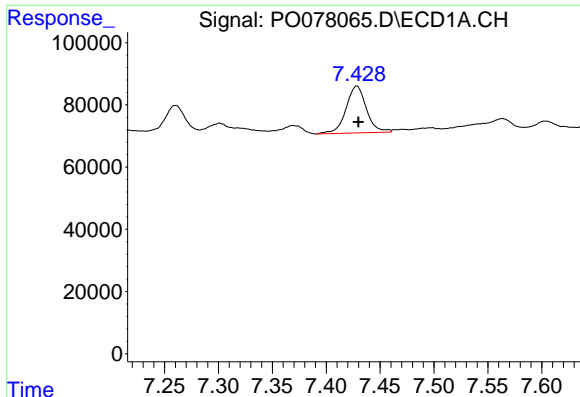
#28 AR-1254-3

R.T.: 7.135 min
 Delta R.T.: -0.002 min
 Response: 257133
 Conc: 65.54 ng/ml



#28 AR-1254-3

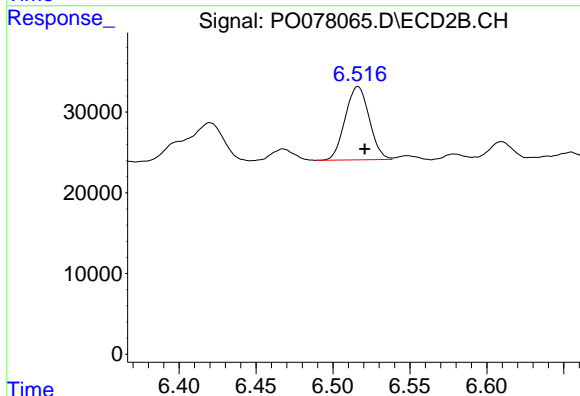
R.T.: 6.278 min
 Delta R.T.: -0.005 min
 Response: 152499
 Conc: 63.89 ng/ml



#29 AR-1254-4

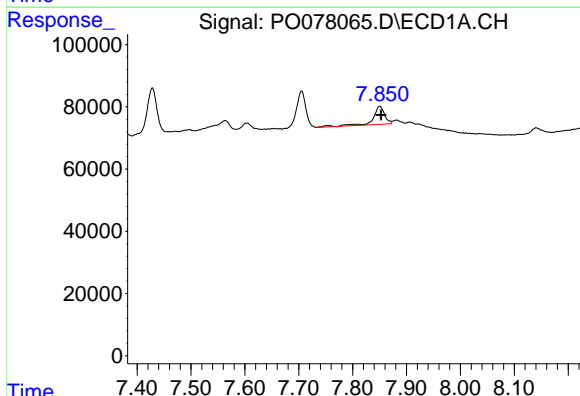
R.T.: 7.428 min
 Delta R.T.: -0.002 min
 Response: 199225
 Conc: 73.36 ng/ml

Instrument :
 ECD_O
 ClientSampleId :



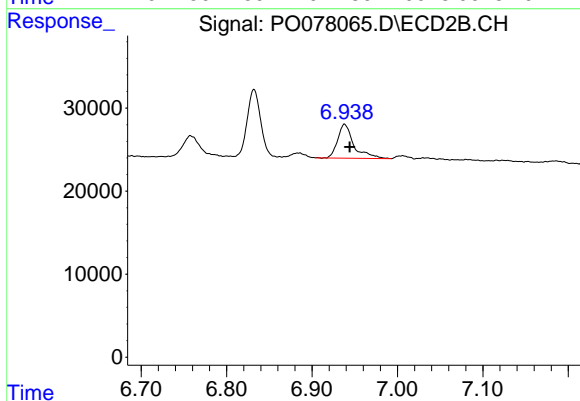
#29 AR-1254-4

R.T.: 6.516 min
 Delta R.T.: -0.004 min
 Response: 98344
 Conc: 67.74 ng/ml



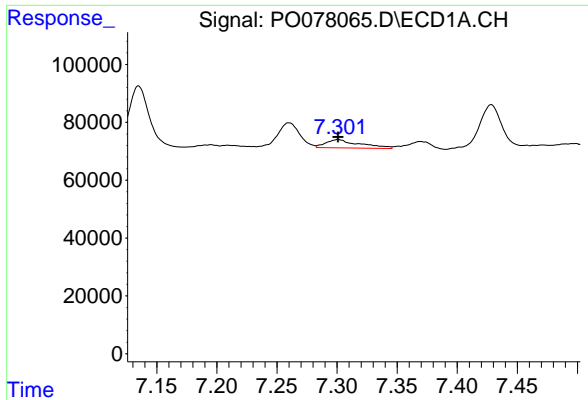
#30 AR-1254-5

R.T.: 7.850 min
 Delta R.T.: -0.003 min
 Response: 88818
 Conc: 30.37 ng/ml



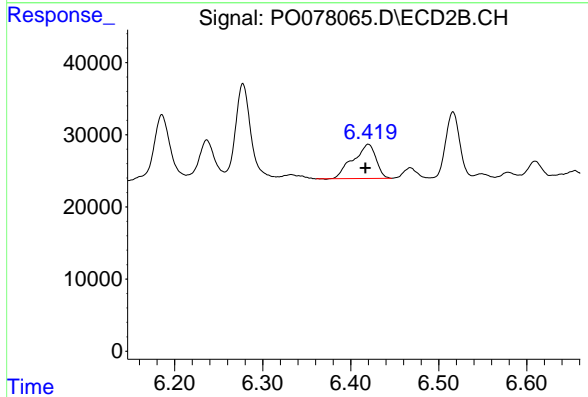
#30 AR-1254-5

R.T.: 6.938 min
 Delta R.T.: -0.006 min
 Response: 53651
 Conc: 23.60 ng/ml

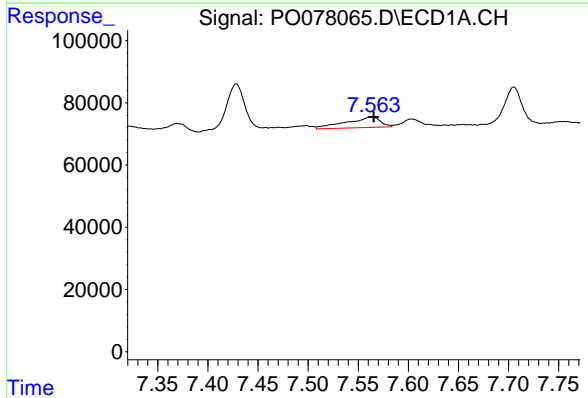


#31 AR-1260-1
 R.T.: 7.301 min
 Delta R.T.: 0.000 min
 Response: 56770
 Conc: 20.23 ng/ml

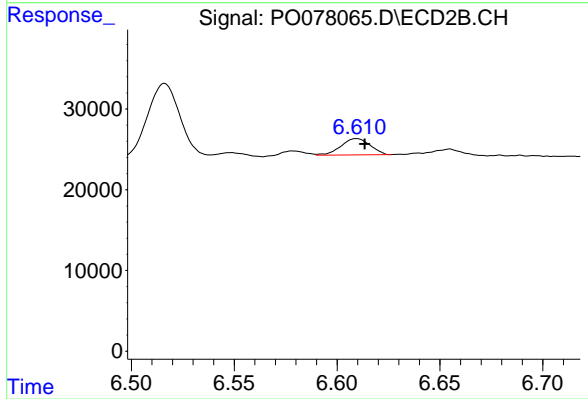
Instrument :
 ECD_O
 ClientSampleId :



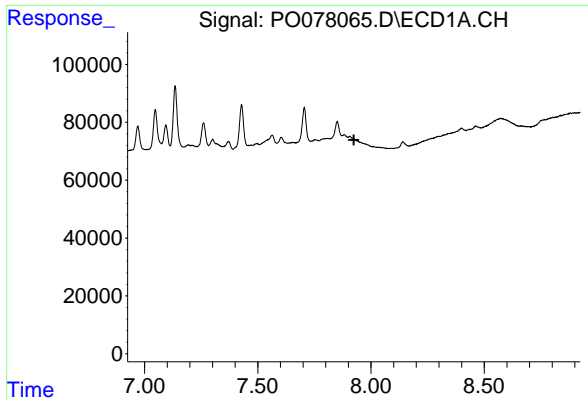
#31 AR-1260-1
 R.T.: 6.420 min
 Delta R.T.: 0.003 min
 Response: 85889
 Conc: 53.60 ng/ml



#32 AR-1260-2
 R.T.: 7.563 min
 Delta R.T.: -0.002 min
 Response: 80477
 Conc: 23.92 ng/ml



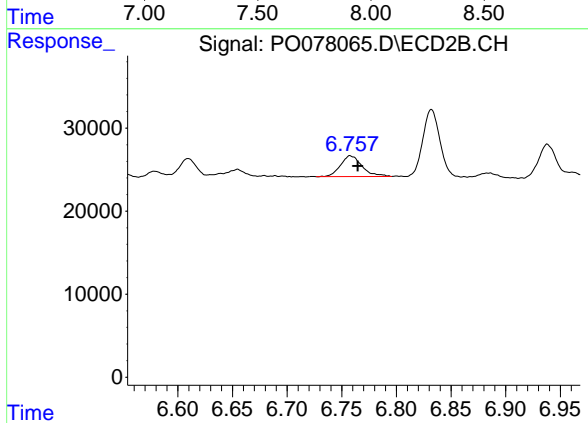
#32 AR-1260-2
 R.T.: 6.610 min
 Delta R.T.: -0.004 min
 Response: 19969
 Conc: 10.34 ng/ml



#33 AR-1260-3

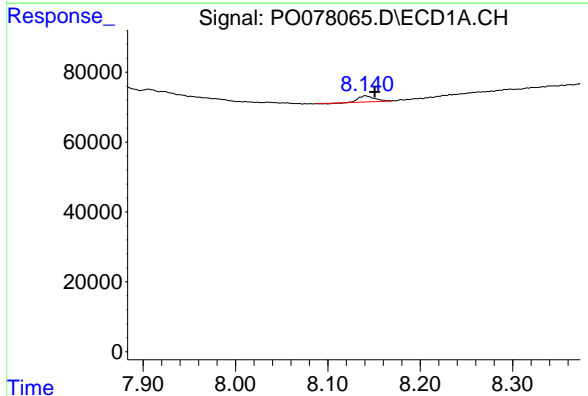
R.T.: 0.000 min
 Exp R.T.: 7.924 min
 Response: 0
 Conc: N.D.

Instrument :
 ECD_O
 ClientSampleId :



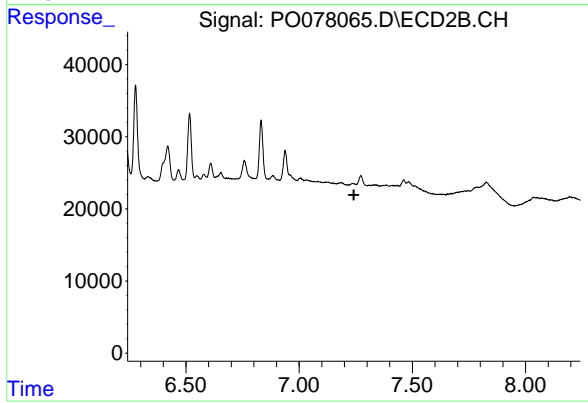
#33 AR-1260-3

R.T.: 6.758 min
 Delta R.T.: -0.007 min
 Response: 34513
 Conc: 18.81 ng/ml



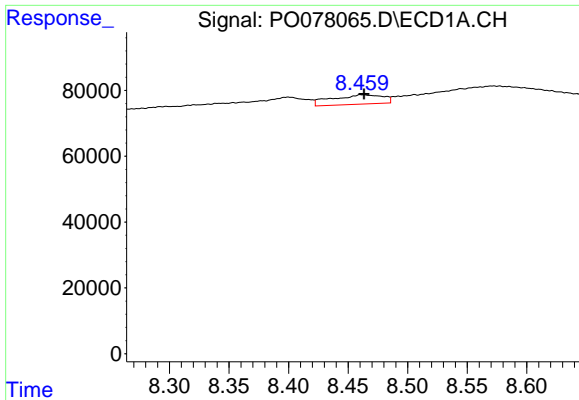
#34 AR-1260-4

R.T.: 8.141 min
 Delta R.T.: -0.010 min
 Response: 20410
 Conc: 7.62 ng/ml



#34 AR-1260-4

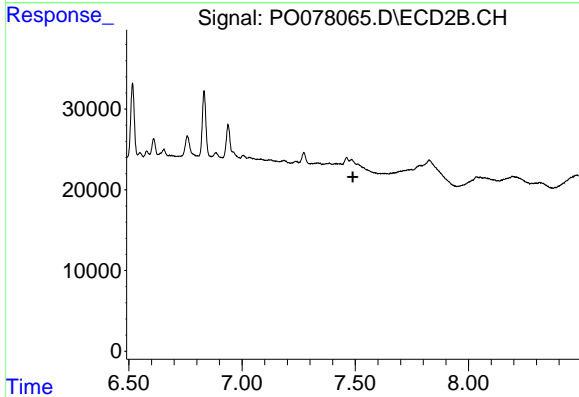
R.T.: 0.000 min
 Exp R.T.: 7.242 min
 Response: 0
 Conc: N.D.



#35 AR-1260-5

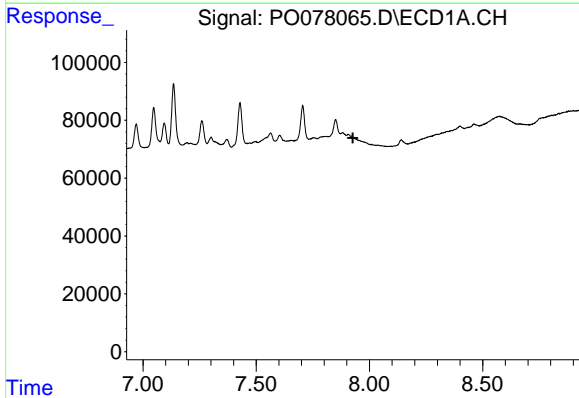
R.T.: 8.461 min
 Delta R.T.: -0.002 min
 Response: 85134
 Conc: 16.58 ng/ml

Instrument :
 ECD_O
 ClientSampleId :



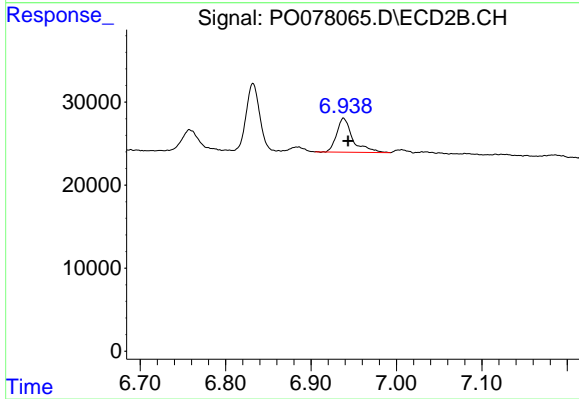
#35 AR-1260-5

R.T.: 0.000 min
 Exp R.T. : 7.489 min
 Response: 0
 Conc: N.D.



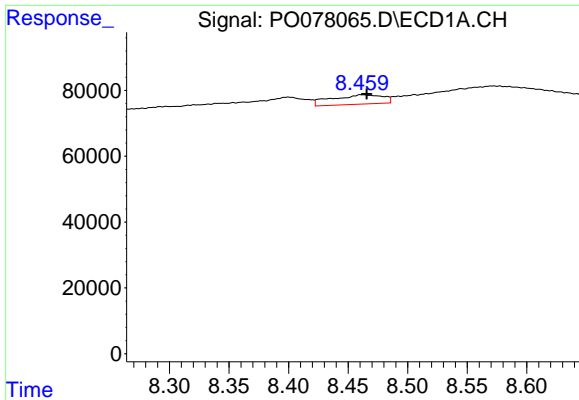
#36 AR-1262-1

R.T.: 0.000 min
 Exp R.T. : 7.927 min
 Response: 0
 Conc: N.D.



#36 AR-1262-1

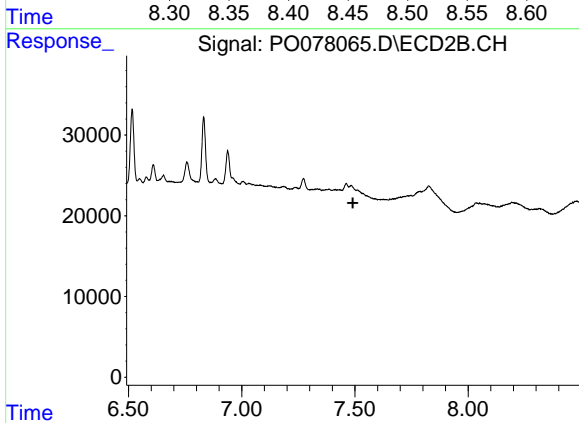
R.T.: 6.938 min
 Delta R.T.: -0.005 min
 Response: 53651
 Conc: 45.72 ng/ml



#37 AR-1262-2

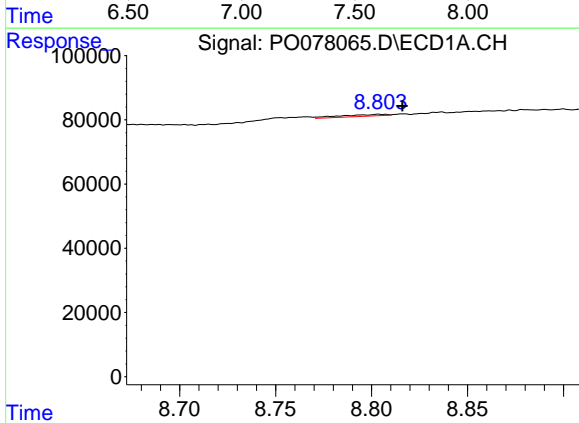
R.T.: 8.461 min
 Delta R.T.: -0.004 min
 Response: 85134
 Conc: 14.14 ng/ml

Instrument :
 ECD_O
 ClientSampled :



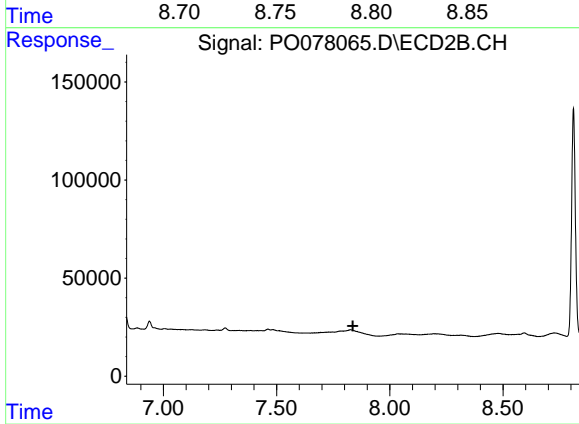
#37 AR-1262-2

R.T.: 0.000 min
 Exp R.T. : 7.491 min
 Response: 0
 Conc: N.D.



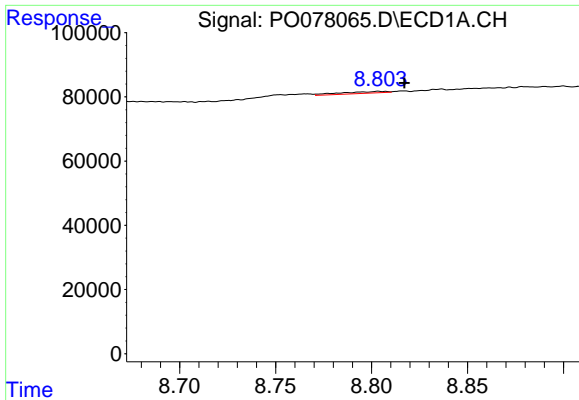
#39 AR-1262-4

R.T.: 8.804 min
 Delta R.T.: -0.012 min
 Response: 9188
 Conc: 2.95 ng/ml



#39 AR-1262-4

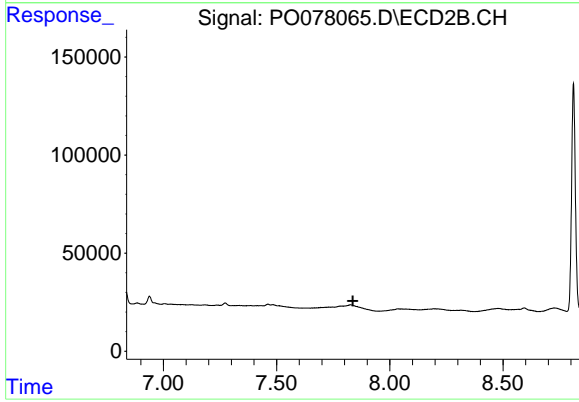
R.T.: 0.000 min
 Exp R.T. : 7.837 min
 Response: 0
 Conc: N.D.



#42 AR-1268-2

R.T.: 8.804 min
Delta R.T.: -0.013 min
Response: 9188
Conc: 1.42 ng/ml

Instrument :
ECD_O
ClientSampled :



#42 AR-1268-2

R.T.: 0.000 min
Exp R.T. : 7.837 min
Response: 0
Conc: N.D.