

Data Path : Z:\pestpcbsrv\HPCHEM1\ECD_0\Data\P0051122\
 Data File : P0086323.D
 Signal(s) : Signal #1: ECD1A.CH Signal #2: ECD2B.CH
 Acq On : 21 May 2022 15:34
 Operator : YP\AJ
 Sample : N2874-01
 Misc :
 ALS Vial : 18 Sample Multiplier: 1

Instrument :
 ECD_0
 ClientSampleId :

Integration File signal 1: autoint1.e
 Integration File signal 2: autoint2.e
 Quant Time: May 22 13:13:59 2022
 Quant Method : Z:\pestpcbsrv\HPCHEM1\ECD_0\methods\P0051122.M
 Quant Title : GC EXTRACTABLES
 QLast Update : Thu May 19 09:06:34 2022
 Response via : Initial Calibration
 Integrator: ChemStation 6890 Scale Mode: Small noise peaks clipped

Volume Inj. : 2 µl
 Signal #1 Phase : ZB-MR1 Signal #2 Phase: ZB-MR2
 Signal #1 Info : 30Mx0.32mmx 0.50µ Signal #2 Info : 30M x 0.32mm x 0.25µm

Compound	RT#1	RT#2	Resp#1	Resp#2	ng/ml	ng/ml
System Monitoring Compounds						
1) SA Tetrachlo...	4.479	3.676	1988816	827688	19.574	19.002
2) SA Decachlor...	10.335	8.731	968462	508491	17.836	14.612
Target Compounds						
3) L1 AR-1016-1	5.625	0.000	512	0	0.160	N.D. #
4) L1 AR-1016-2	5.625f	0.000	512	0	0.115	N.D. #
5) L1 AR-1016-3	5.806f	0.000	8954	0	3.266	N.D. #
6) L1 AR-1016-4	5.806f	0.000	8954	0	4.040	N.D. #
7) L1 AR-1016-5	6.157	5.222	91225	10287	44.026	9.110 #
8) L2 AR-1221-1	4.688	3.841f	66925	5452	54.662	10.602 #
9) L2 AR-1221-2	4.789	3.981	31133	15488	34.106	40.189
10) L2 AR-1221-3	0.000	4.106f	0	6699	N.D.	5.516 #
11) L3 AR-1232-1	4.789f	4.106f	31133	6699	15.208	7.250 #
12) L3 AR-1232-2	5.351f	0.000	25989	0	27.596	N.D. #
13) L3 AR-1232-3	5.625f	0.000	512	0	0.291	N.D. #
14) L3 AR-1232-4	5.806f	0.000	8954	0	10.293	N.D. #
15) L3 AR-1232-5	0.000	5.222	0	10287	N.D.	24.561 #
16) L4 AR-1242-1	5.625	0.000	512	0	0.188	N.D. #
17) L4 AR-1242-2	5.625f	0.000	512	0	0.136	N.D. #
18) L4 AR-1242-3	5.806f	0.000	8954	0	3.811	N.D. #
19) L4 AR-1242-4	5.806f	0.000	8954	0	4.724	N.D. #
20) L4 AR-1242-5	6.524f	0.000	19975	0	10.912	N.D. #
21) L5 AR-1248-1	5.625	0.000	512	0	0.253	N.D. #
23) L5 AR-1248-3	6.157	0.000	91225	0	30.746	N.D. #
24) L5 AR-1248-4	6.524	5.222	19975	10287	6.205	6.424
25) L5 AR-1248-5	6.524f	0.000	19975	0	6.418	N.D. #
26) L6 AR-1254-1	6.524	0.000	19975	0	5.935	N.D. #
27) L6 AR-1254-2	6.741	0.000	13378	0	2.719	N.D. #
28) L6 AR-1254-3	7.115	6.157	44437	11558	8.795	3.271 #
29) L6 AR-1254-4	7.400	6.398	38196	15939	10.255	7.205 #
30) L6 AR-1254-5	7.823	6.787	289766	131117	74.366	44.329 #
31) L7 AR-1260-1	7.281	6.272	76750	32416	25.360	16.655 #
32) L7 AR-1260-2	7.539	6.460	152495	64375	42.155	27.390 #
33) L7 AR-1260-3	7.902	6.616	200818	31501	72.760	14.650 #
34) L7 AR-1260-4	8.128	7.125	218207	9867	64.673	5.480 #
35) L7 AR-1260-5	8.455	7.328	220433	117553	35.722	27.137
36) L8 AR-1262-1	7.902	6.827	200818	81605	44.402	27.008 #
37) L8 AR-1262-2	8.455	7.328	220433	117553	28.164	21.400
38) L8 AR-1262-3	8.790	7.613	197890	72778	37.627	34.526
39) L8 AR-1262-4	8.845	7.675	137682	110800	57.534	27.954 #
40) L8 AR-1262-5	9.544	8.173	89865	31902	32.560	17.808 #
41) L9 AR-1268-1	8.790	7.613	197890	72778	22.667	11.927 #
42) L9 AR-1268-2	8.845	7.675	137682	110800	17.213	20.184

Data Path : Z:\pestpcbsrv\HPCHEM1\ECD_0\Data\P0052122\
 Data File : P0086323.D
 Signal(s) : Signal #1: ECD1A.CH Signal #2: ECD2B.CH
 Acq On : 21 May 2022 15:34
 Operator : YP\AJ
 Sample : N2874-01
 Misc :
 ALS Vial : 18 Sample Multiplier: 1

Instrument :
 ECD_0
 ClientSampleId :

Integration File signal 1: autoint1.e
 Integration File signal 2: autoint2.e
 Quant Time: May 22 13:13:59 2022
 Quant Method : Z:\pestpcbsrv\HPCHEM1\ECD_0\methods\P0051122.M
 Quant Title : GC EXTRACTABLES
 QLast Update : Thu May 19 09:06:34 2022
 Response via : Initial Calibration
 Integrator: ChemStation 6890 Scale Mode: Small noise peaks clipped

Volume Inj. : 2 µl
 Signal #1 Phase : ZB-MR1 Signal #2 Phase: ZB-MR2
 Signal #1 Info : 30Mx0.32mmx 0.50µ Signal #2 Info : 30M x 0.32mm x 0.25µm

	Compound	RT#1	RT#2	Resp#1	Resp#2	ng/ml	ng/ml
44)	L9 AR-1268-4	9.544	8.173	89865	31902	29.764	16.339 #
45)	L9 AR-1268-5	0.000	8.469	0	10122	N.D.	0.691 #

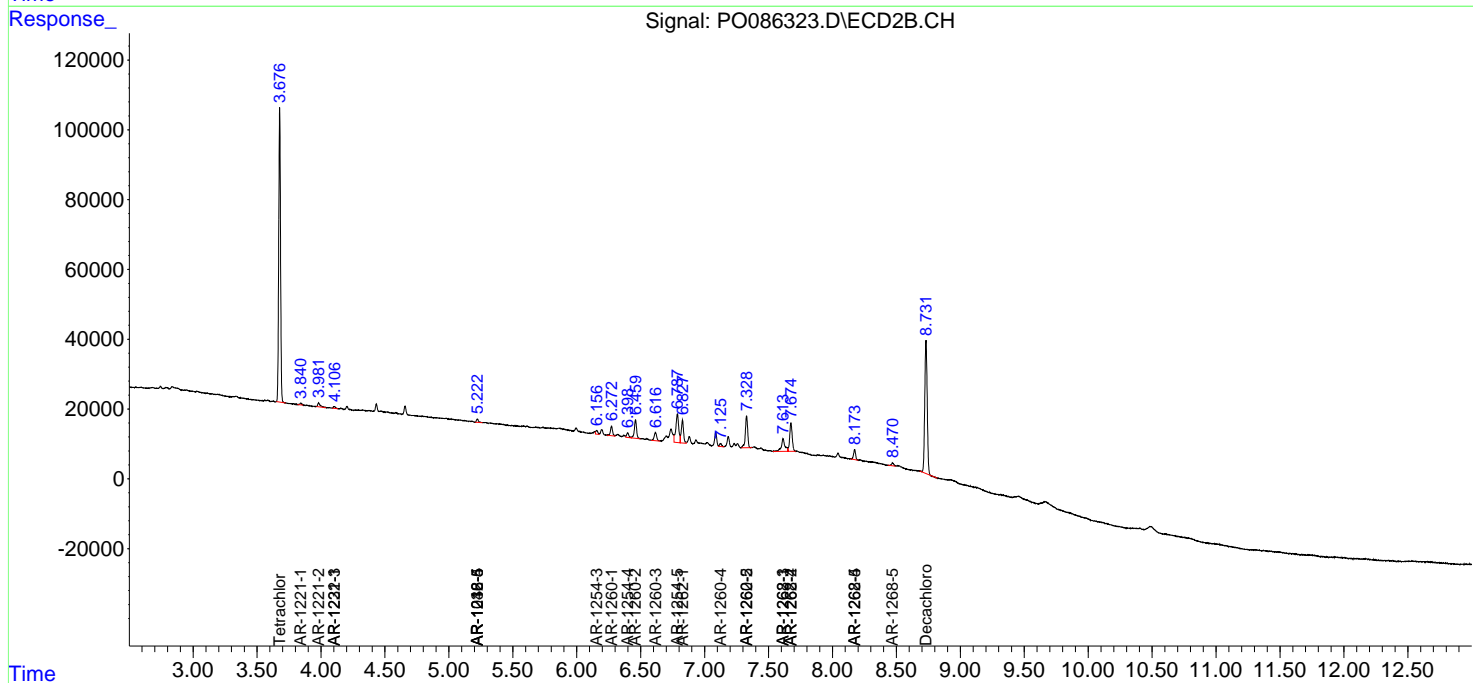
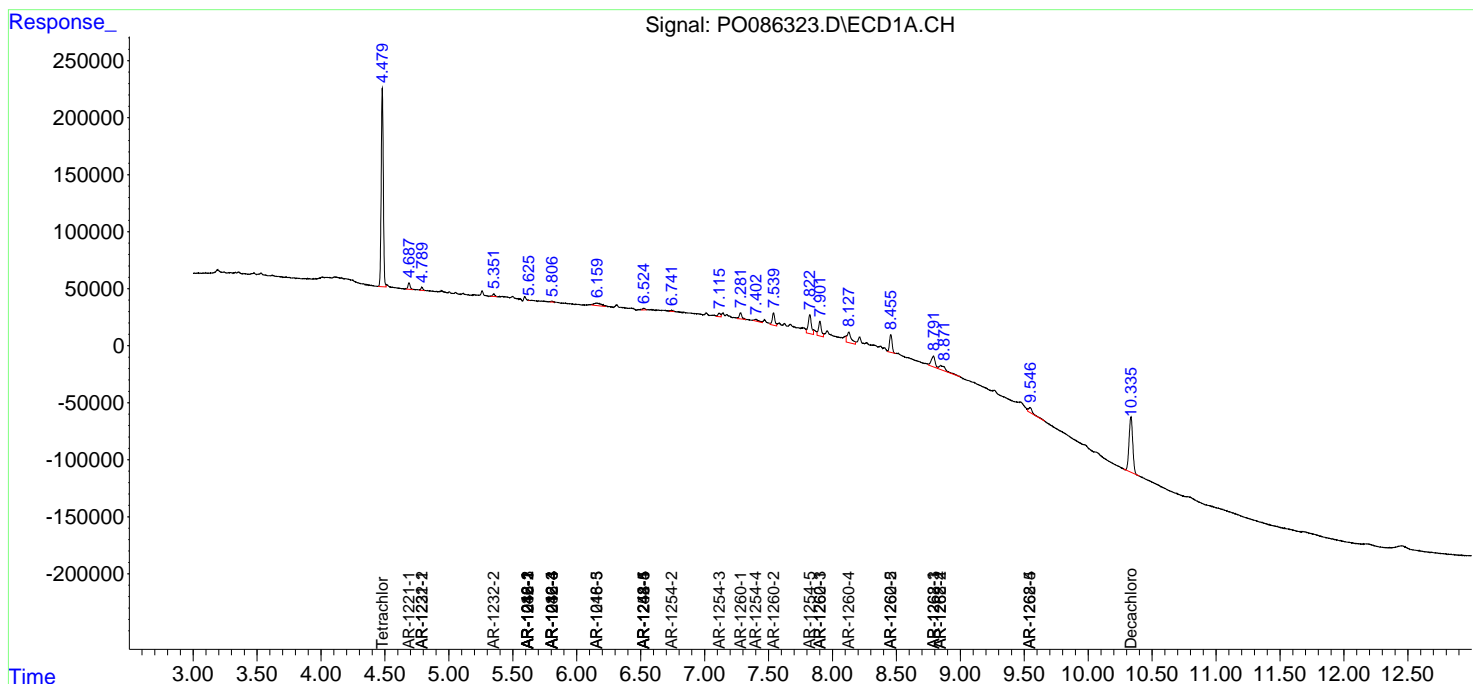
(f)=RT Delta > 1/2 Window (#)=Amounts differ by > 25% (m)=manual int.

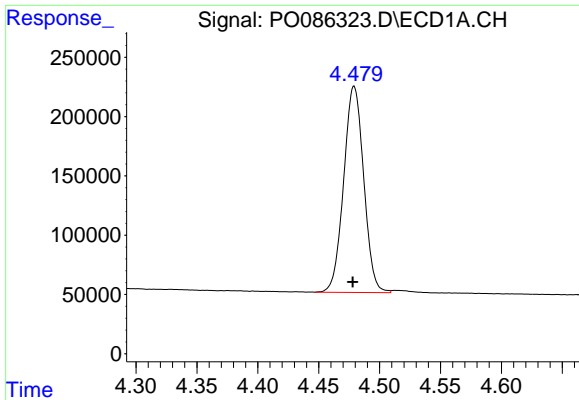
Data Path : Z:\pestpcbsrv\HPCHEM1\ECD_O\Data\P0052122\
 Data File : P0086323.D
 Signal(s) : Signal #1: ECD1A.CH Signal #2: ECD2B.CH
 Acq On : 21 May 2022 15:34
 Operator : YP\AJ
 Sample : N2874-01
 Misc :
 ALS Vial : 18 Sample Multiplier: 1

Instrument :
 ECD_O
 ClientSampleId :

Integration File signal 1: autoint1.e
 Integration File signal 2: autoint2.e
 Quant Time: May 22 13:13:59 2022
 Quant Method : Z:\pestpcbsrv\HPCHEM1\ECD_O\methods\P0051122.M
 Quant Title : GC EXTRACTABLES
 QLast Update : Thu May 19 09:06:34 2022
 Response via : Initial Calibration
 Integrator: ChemStation 6890 Scale Mode: Small noise peaks clipped

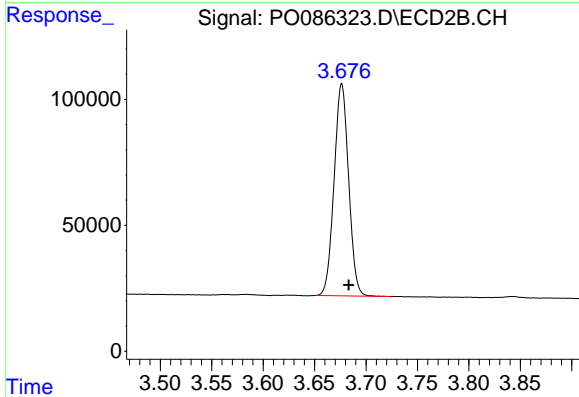
Volume Inj. : 2 µl
 Signal #1 Phase : ZB-MR1 Signal #2 Phase: ZB-MR2
 Signal #1 Info : 30Mx0.32mmx 0.50µ Signal #2 Info : 30M x 0.32mm x 0.25µm



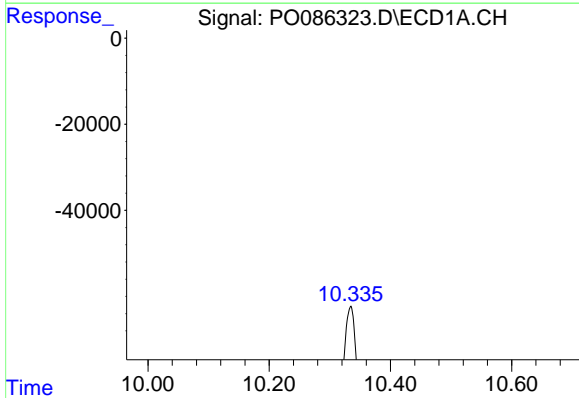


#1 Tetrachloro-m-xylene
 R.T.: 4.479 min
 Delta R.T.: 0.001 min
 Response: 1988816
 Conc: 19.57 ng/ml

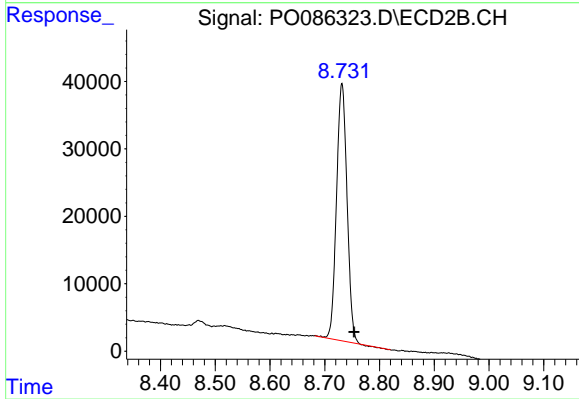
Instrument :
 ECD_O
 ClientSampleId :



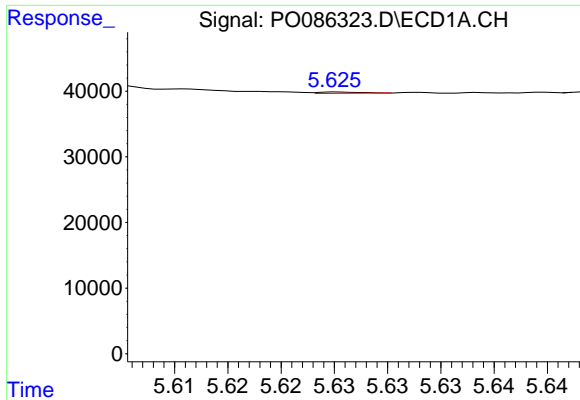
#1 Tetrachloro-m-xylene
 R.T.: 3.676 min
 Delta R.T.: -0.007 min
 Response: 827688
 Conc: 19.00 ng/ml



#2 Decachlorobiphenyl
 R.T.: 10.335 min
 Delta R.T.: 0.010 min
 Response: 968462
 Conc: 17.84 ng/ml



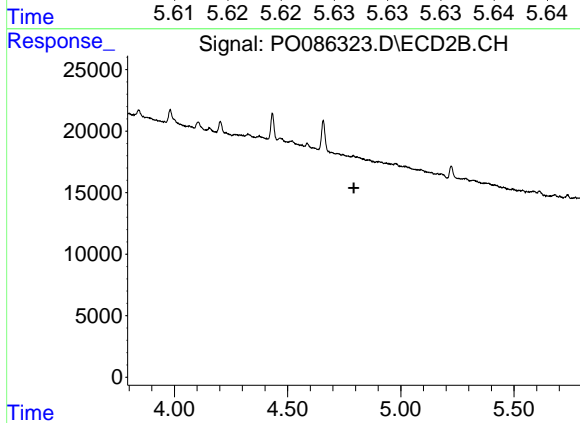
#2 Decachlorobiphenyl
 R.T.: 8.731 min
 Delta R.T.: -0.022 min
 Response: 508491
 Conc: 14.61 ng/ml



#3 AR-1016-1

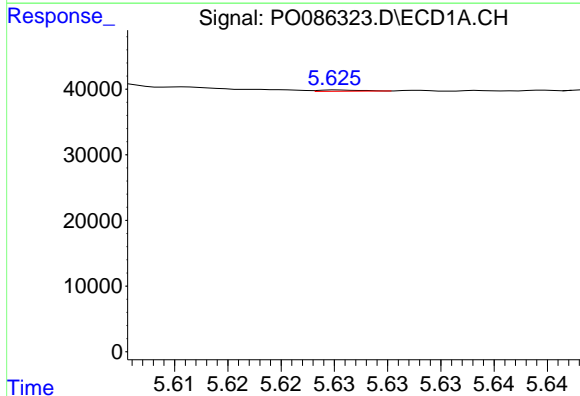
R.T.: 5.625 min
 Delta R.T.: -0.034 min
 Response: 512
 Conc: 0.16 ng/ml

Instrument :
 ECD_O
 ClientSampleId :



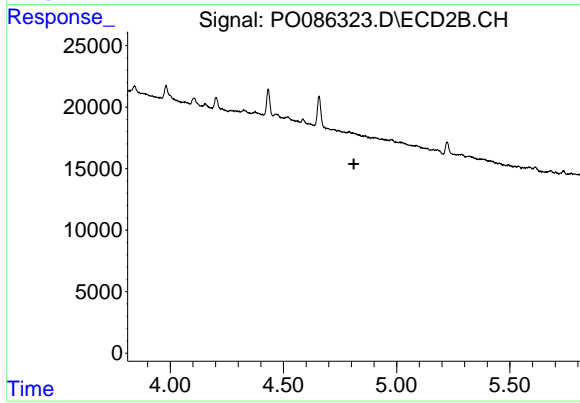
#3 AR-1016-1

R.T.: 0.000 min
 Exp R.T. : 4.792 min
 Response: 0
 Conc: N.D.



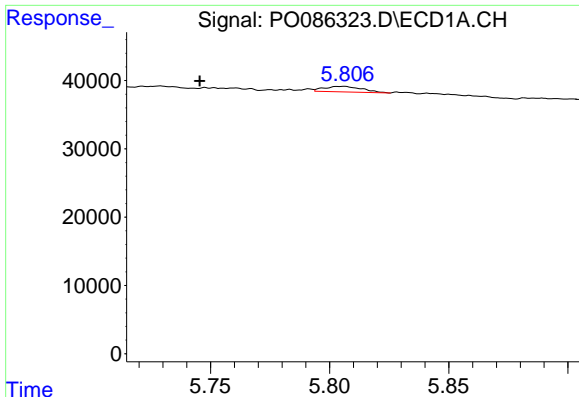
#4 AR-1016-2

R.T.: 5.625 min
 Delta R.T.: -0.057 min
 Response: 512
 Conc: 0.12 ng/ml



#4 AR-1016-2

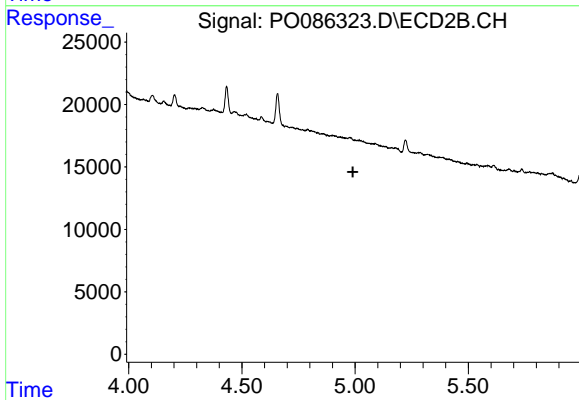
R.T.: 0.000 min
 Exp R.T. : 4.811 min
 Response: 0
 Conc: N.D.



#5 AR-1016-3

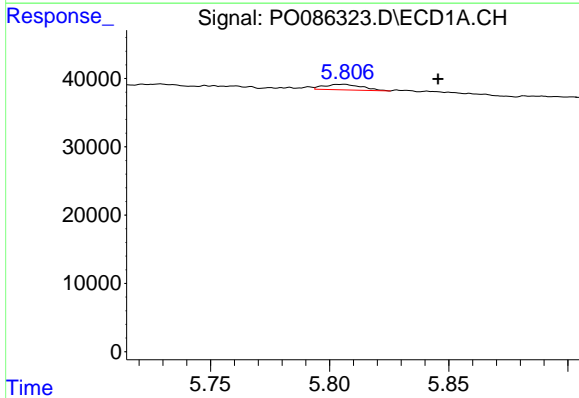
R.T.: 5.806 min
Delta R.T.: 0.061 min
Response: 8954
Conc: 3.27 ng/ml

Instrument :
ECD_O
ClientSampleId :



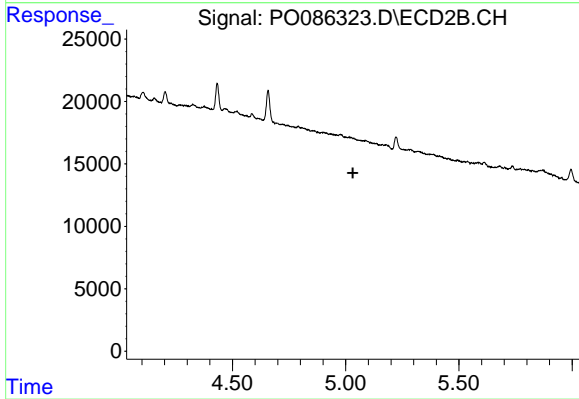
#5 AR-1016-3

R.T.: 0.000 min
Exp R.T. : 4.990 min
Response: 0
Conc: N.D.



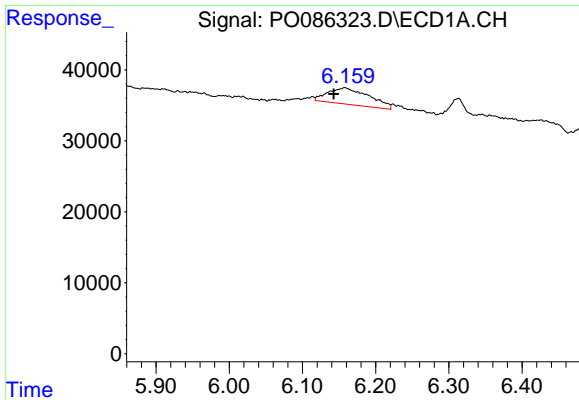
#6 AR-1016-4

R.T.: 5.806 min
Delta R.T.: -0.039 min
Response: 8954
Conc: 4.04 ng/ml



#6 AR-1016-4

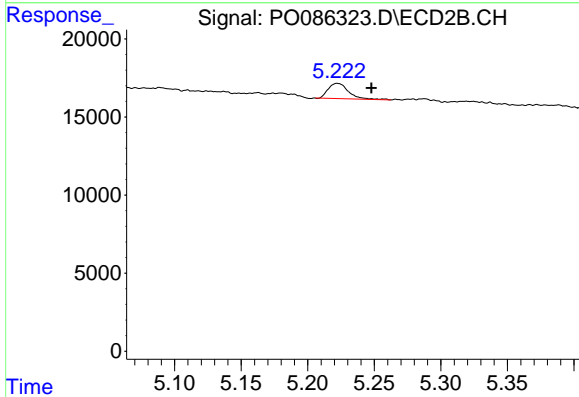
R.T.: 0.000 min
Exp R.T. : 5.032 min
Response: 0
Conc: N.D.



#7 AR-1016-5

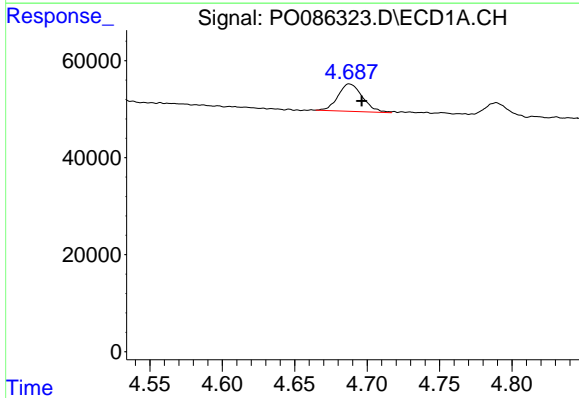
R.T.: 6.157 min
 Delta R.T.: 0.015 min
 Response: 91225
 Conc: 44.03 ng/ml

Instrument :
 ECD_O
 ClientSampleId :



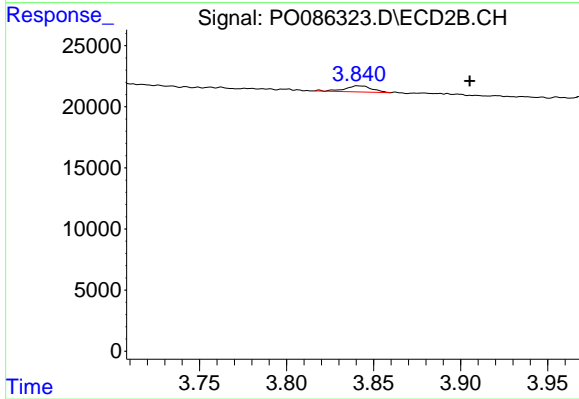
#7 AR-1016-5

R.T.: 5.222 min
 Delta R.T.: -0.026 min
 Response: 10287
 Conc: 9.11 ng/ml



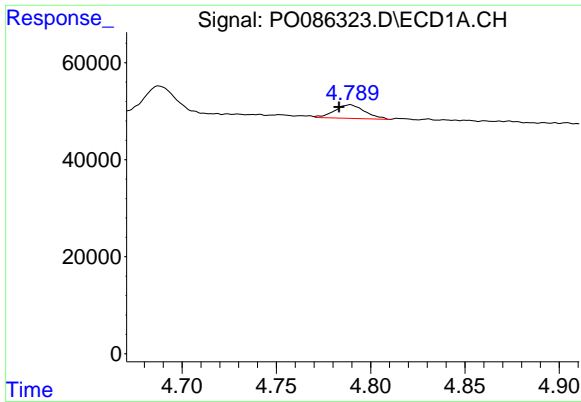
#8 AR-1221-1

R.T.: 4.688 min
 Delta R.T.: -0.009 min
 Response: 66925
 Conc: 54.66 ng/ml



#8 AR-1221-1

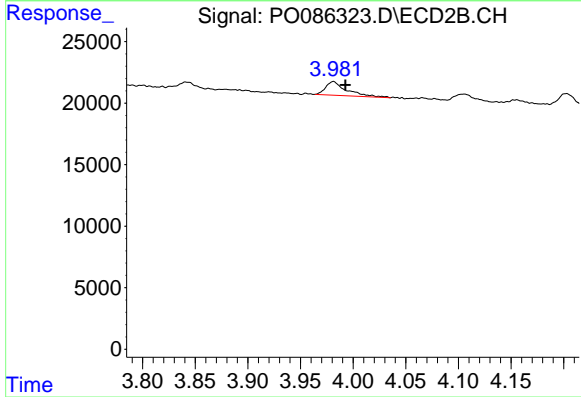
R.T.: 3.841 min
 Delta R.T.: -0.064 min
 Response: 5452
 Conc: 10.60 ng/ml



#9 AR-1221-2

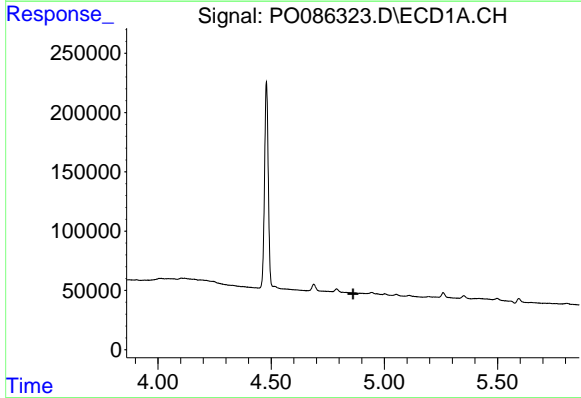
R.T.: 4.789 min
 Delta R.T.: 0.006 min
 Response: 31133
 Conc: 34.11 ng/ml

Instrument :
 ECD_O
 ClientSampleId :



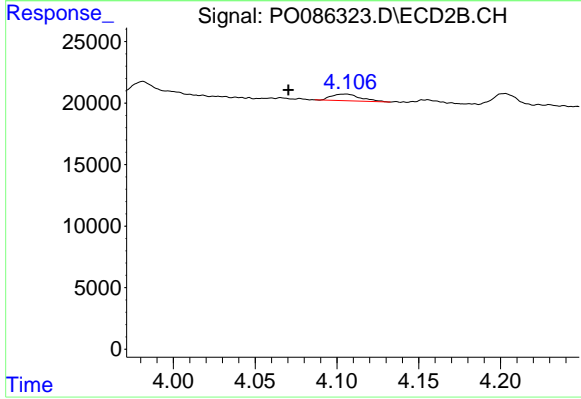
#9 AR-1221-2

R.T.: 3.981 min
 Delta R.T.: -0.011 min
 Response: 15488
 Conc: 40.19 ng/ml



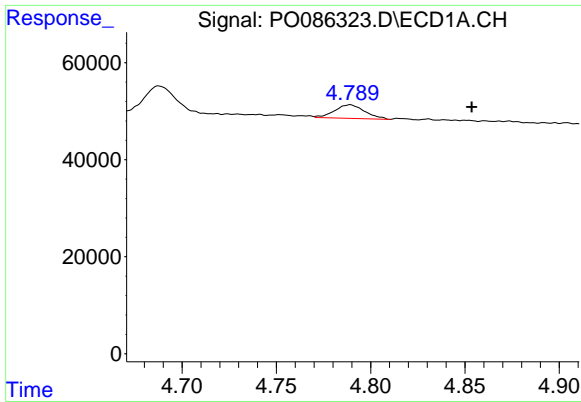
#10 AR-1221-3

R.T.: 0.000 min
 Exp R.T. : 4.861 min
 Response: 0
 Conc: N.D.



#10 AR-1221-3

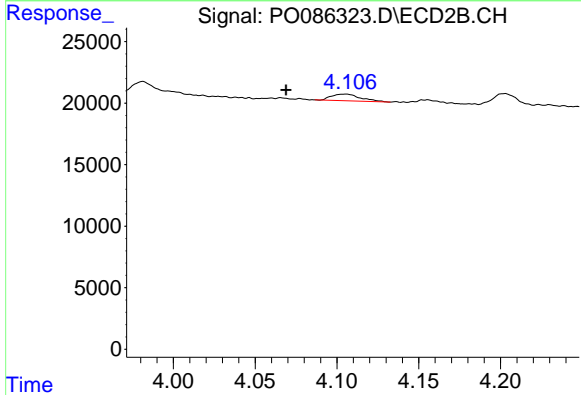
R.T.: 4.106 min
 Delta R.T.: 0.035 min
 Response: 6699
 Conc: 5.52 ng/ml



#11 AR-1232-1

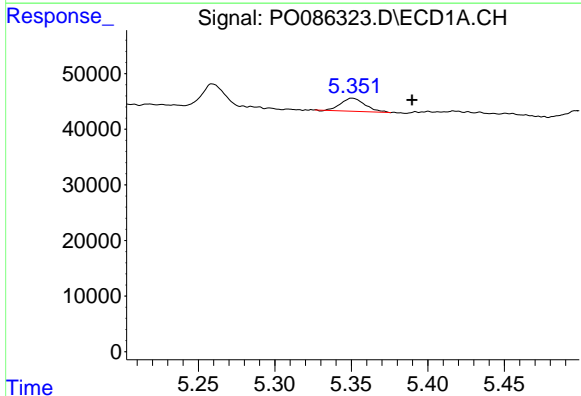
R.T.: 4.789 min
 Delta R.T.: -0.064 min
 Response: 31133
 Conc: 15.21 ng/ml

Instrument :
 ECD_O
 ClientSampleId :



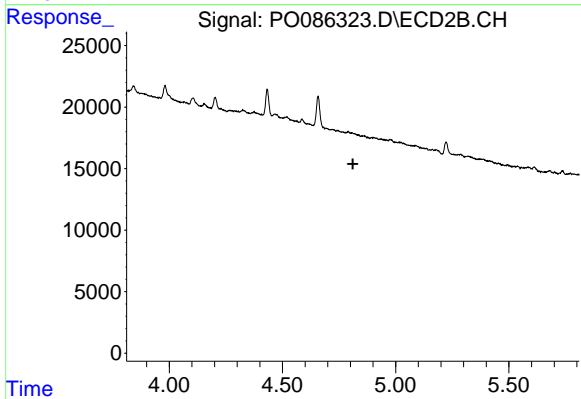
#11 AR-1232-1

R.T.: 4.106 min
 Delta R.T.: 0.037 min
 Response: 6699
 Conc: 7.25 ng/ml



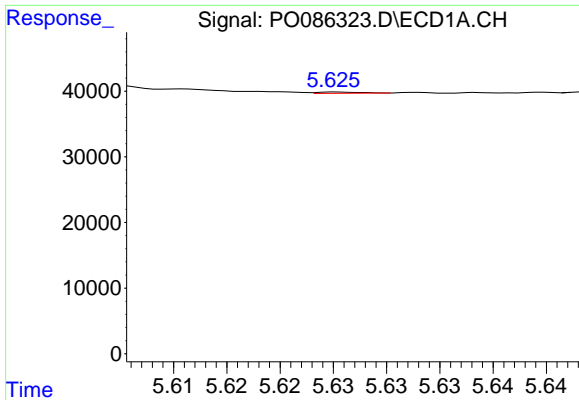
#12 AR-1232-2

R.T.: 5.351 min
 Delta R.T.: -0.039 min
 Response: 25989
 Conc: 27.60 ng/ml



#12 AR-1232-2

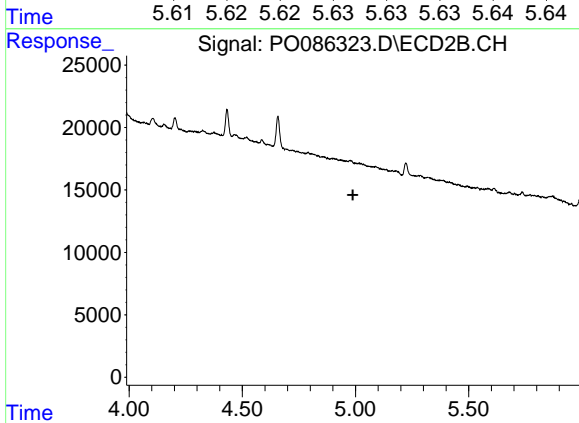
R.T.: 0.000 min
 Exp R.T. : 4.811 min
 Response: 0
 Conc: N.D.



#13 AR-1232-3

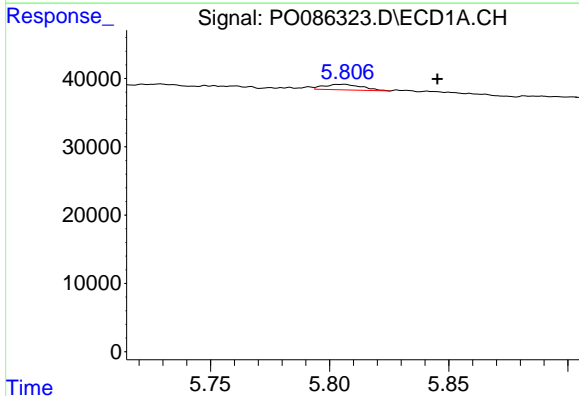
R.T.: 5.625 min
 Delta R.T.: -0.057 min
 Response: 512
 Conc: 0.29 ng/ml

Instrument :
 ECD_O
 ClientSampleId :



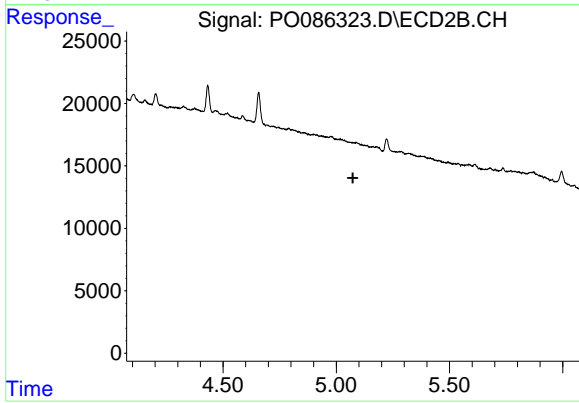
#13 AR-1232-3

R.T.: 0.000 min
 Exp R.T. : 4.989 min
 Response: 0
 Conc: N.D.



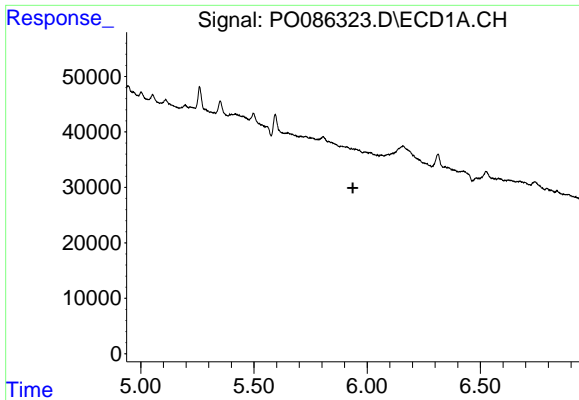
#14 AR-1232-4

R.T.: 5.806 min
 Delta R.T.: -0.039 min
 Response: 8954
 Conc: 10.29 ng/ml



#14 AR-1232-4

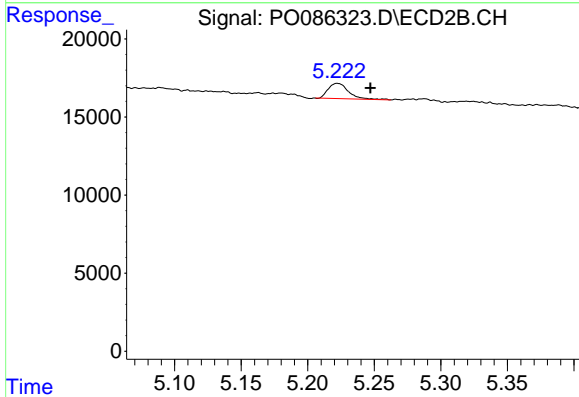
R.T.: 0.000 min
 Exp R.T. : 5.073 min
 Response: 0
 Conc: N.D.



#15 AR-1232-5

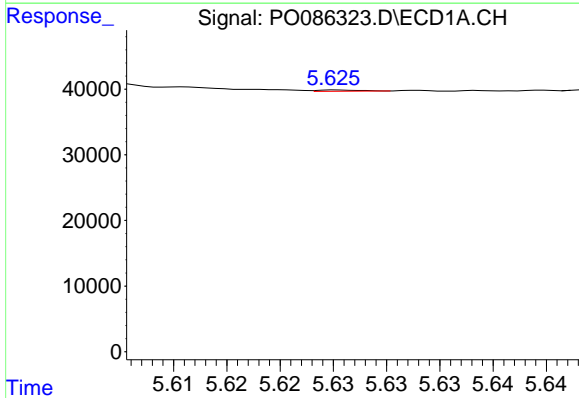
R.T.: 0.000 min
 Exp R.T.: 5.937 min
 Response: 0
 Conc: N.D.

Instrument :
 ECD_O
 ClientSampleId :



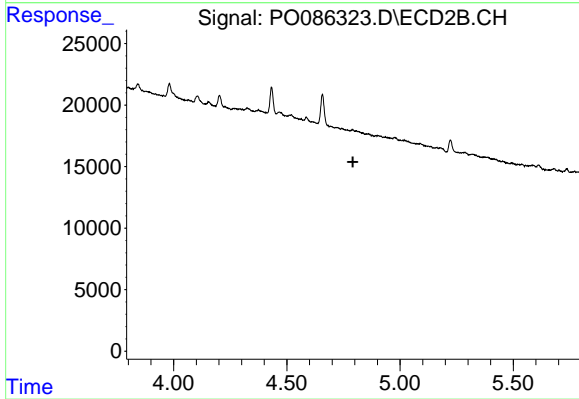
#15 AR-1232-5

R.T.: 5.222 min
 Delta R.T.: -0.025 min
 Response: 10287
 Conc: 24.56 ng/ml



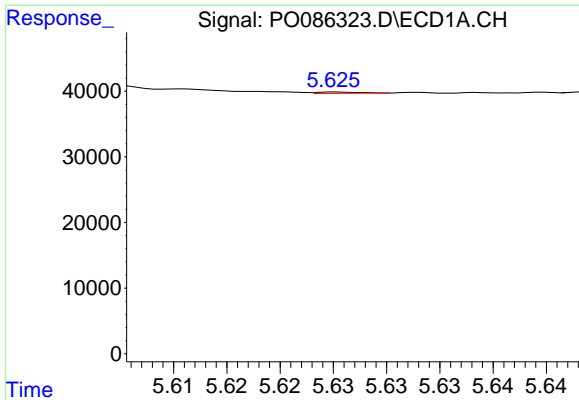
#16 AR-1242-1

R.T.: 5.625 min
 Delta R.T.: -0.035 min
 Response: 512
 Conc: 0.19 ng/ml



#16 AR-1242-1

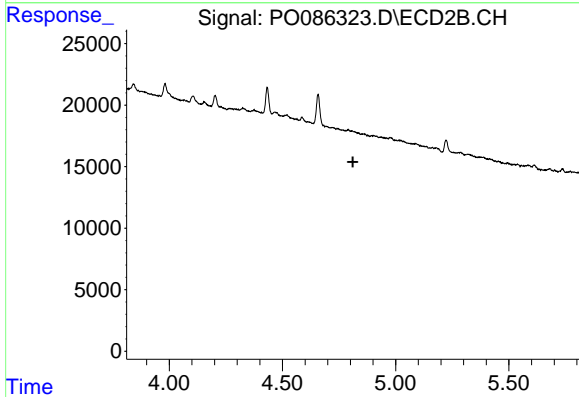
R.T.: 0.000 min
 Exp R.T.: 4.792 min
 Response: 0
 Conc: N.D.



#17 AR-1242-2

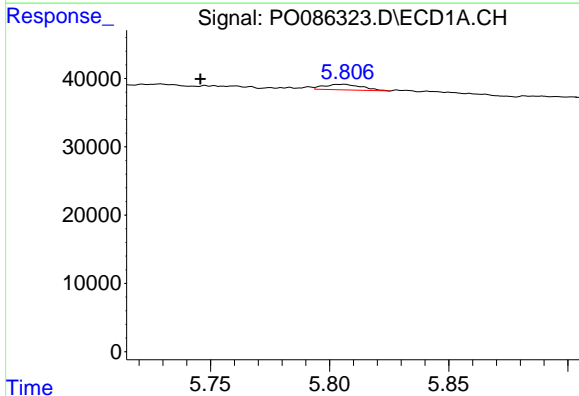
R.T.: 5.625 min
 Delta R.T.: -0.058 min
 Response: 512
 Conc: 0.14 ng/ml

Instrument :
 ECD_O
 ClientSampleId :



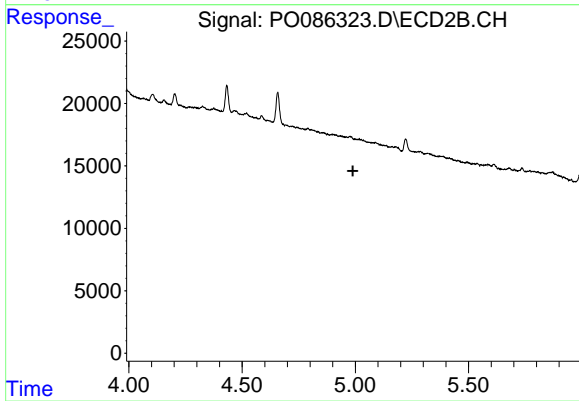
#17 AR-1242-2

R.T.: 0.000 min
 Exp R.T. : 4.811 min
 Response: 0
 Conc: N.D.



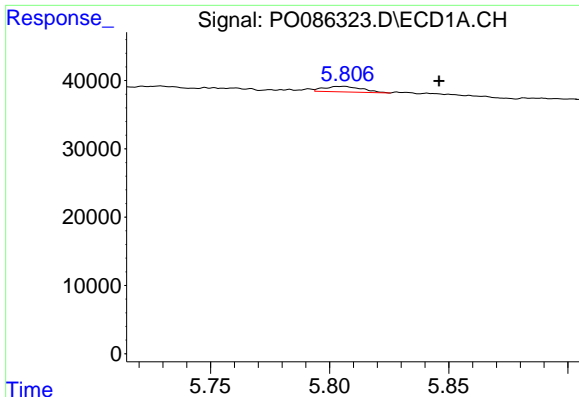
#18 AR-1242-3

R.T.: 5.806 min
 Delta R.T.: 0.061 min
 Response: 8954
 Conc: 3.81 ng/ml



#18 AR-1242-3

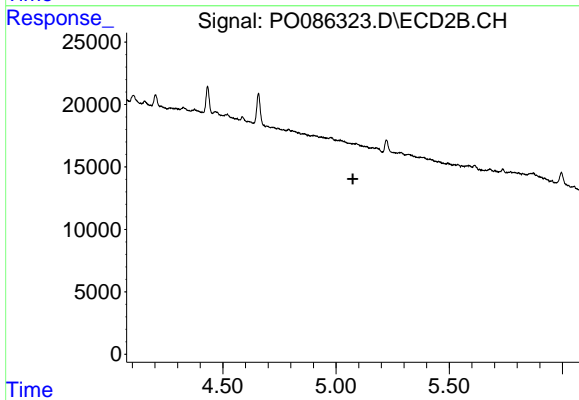
R.T.: 0.000 min
 Exp R.T. : 4.989 min
 Response: 0
 Conc: N.D.



#19 AR-1242-4

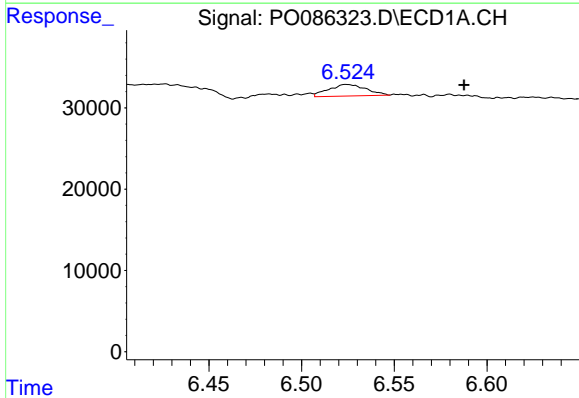
R.T.: 5.806 min
 Delta R.T.: -0.040 min
 Response: 8954
 Conc: 4.72 ng/ml

Instrument :
 ECD_O
 ClientSampleId :



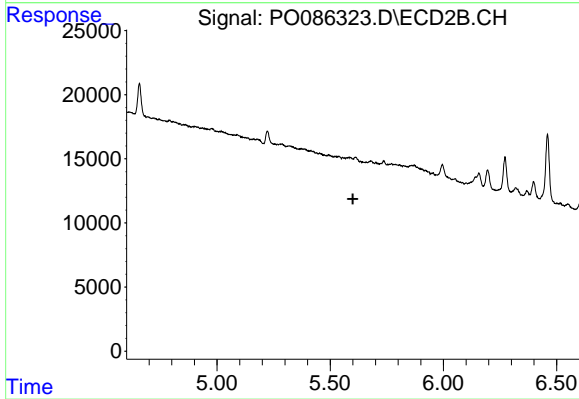
#19 AR-1242-4

R.T.: 0.000 min
 Exp R.T. : 5.074 min
 Response: 0
 Conc: N.D.



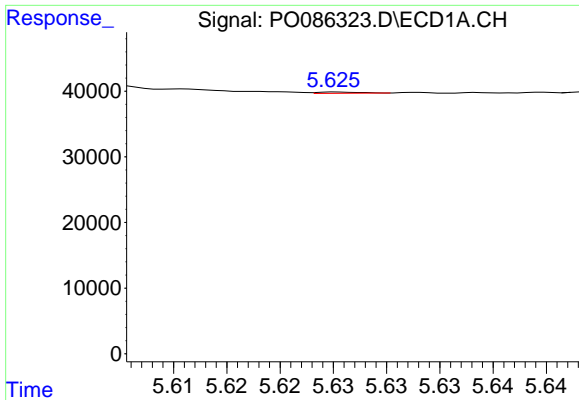
#20 AR-1242-5

R.T.: 6.524 min
 Delta R.T.: -0.064 min
 Response: 19975
 Conc: 10.91 ng/ml



#20 AR-1242-5

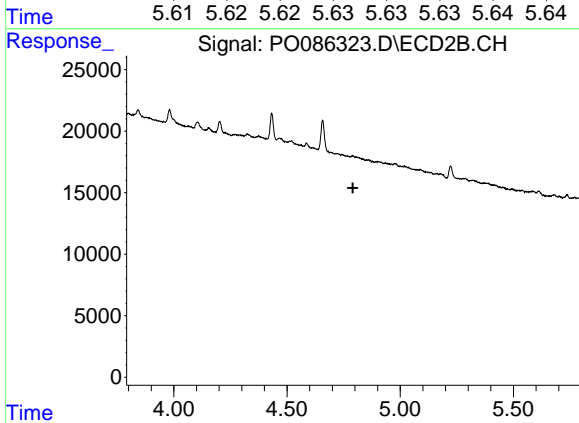
R.T.: 0.000 min
 Exp R.T. : 5.600 min
 Response: 0
 Conc: N.D.



#21 AR-1248-1

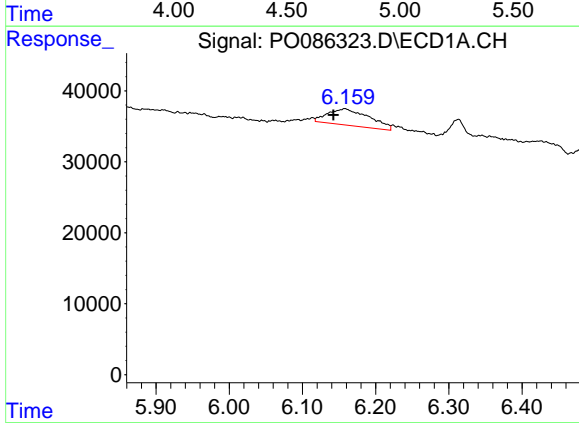
R.T.: 5.625 min
 Delta R.T.: -0.034 min
 Response: 512
 Conc: 0.25 ng/ml

Instrument :
 ECD_O
 ClientSampleId :



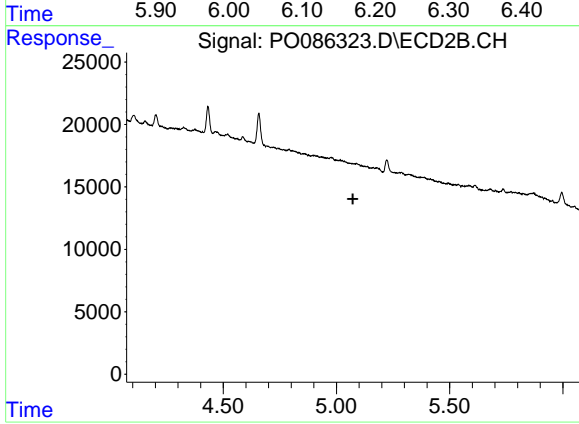
#21 AR-1248-1

R.T.: 0.000 min
 Exp R.T. : 4.791 min
 Response: 0
 Conc: N.D.



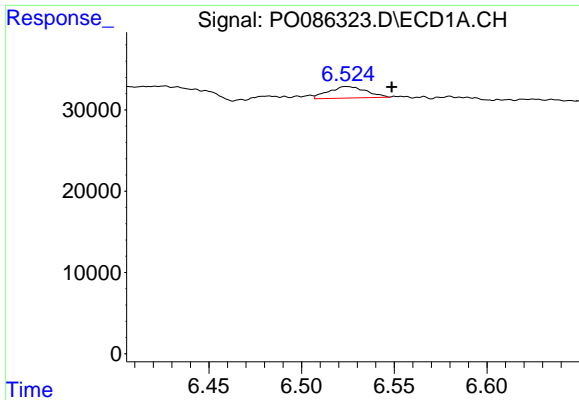
#23 AR-1248-3

R.T.: 6.157 min
 Delta R.T.: 0.015 min
 Response: 91225
 Conc: 30.75 ng/ml



#23 AR-1248-3

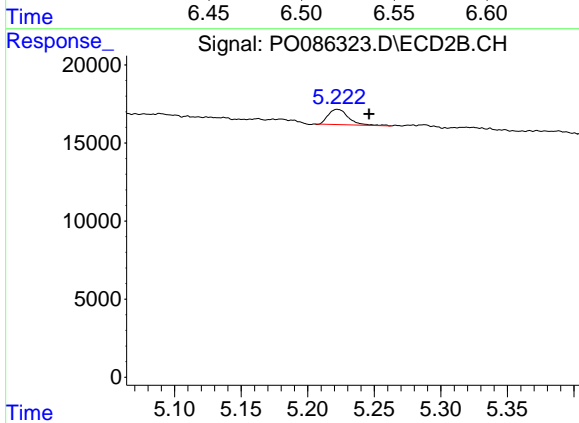
R.T.: 0.000 min
 Exp R.T. : 5.073 min
 Response: 0
 Conc: N.D.



#24 AR-1248-4

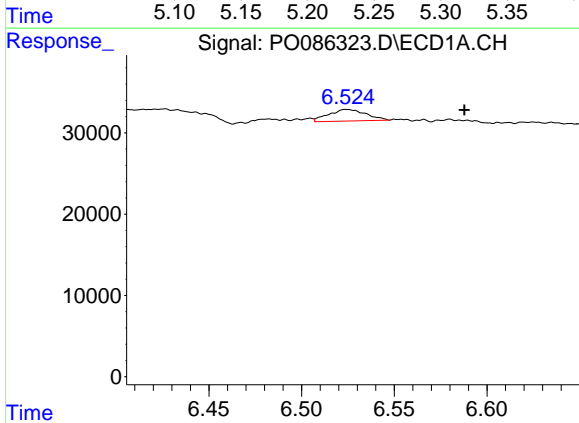
R.T.: 6.524 min
 Delta R.T.: -0.025 min
 Response: 19975
 Conc: 6.21 ng/ml

Instrument :
 ECD_O
 ClientSampleId :



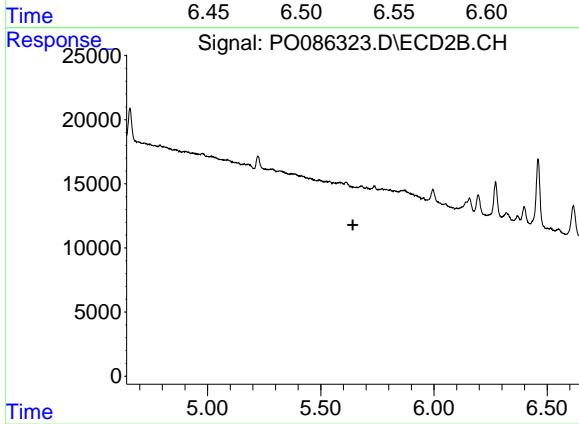
#24 AR-1248-4

R.T.: 5.222 min
 Delta R.T.: -0.024 min
 Response: 10287
 Conc: 6.42 ng/ml



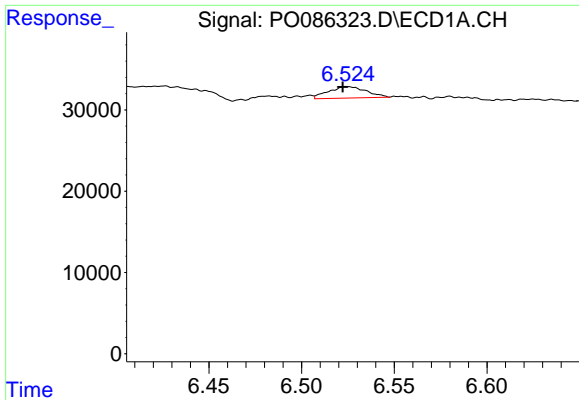
#25 AR-1248-5

R.T.: 6.524 min
 Delta R.T.: -0.064 min
 Response: 19975
 Conc: 6.42 ng/ml



#25 AR-1248-5

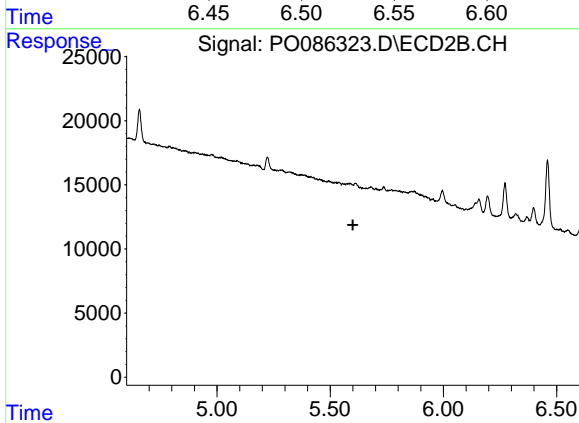
R.T.: 0.000 min
 Exp R.T. : 5.642 min
 Response: 0
 Conc: N.D.



#26 AR-1254-1

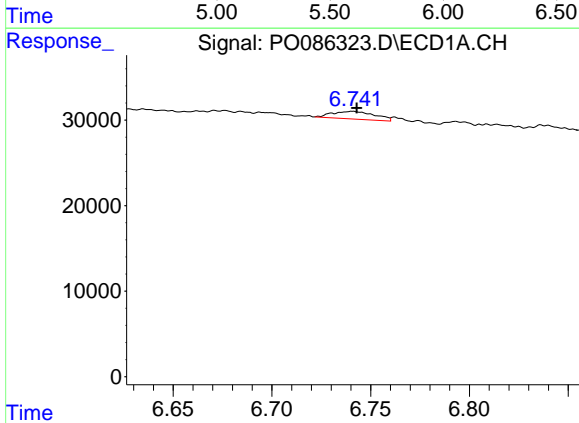
R.T.: 6.524 min
 Delta R.T.: 0.002 min
 Response: 19975
 Conc: 5.94 ng/ml

Instrument :
 ECD_O
 ClientSampleId :



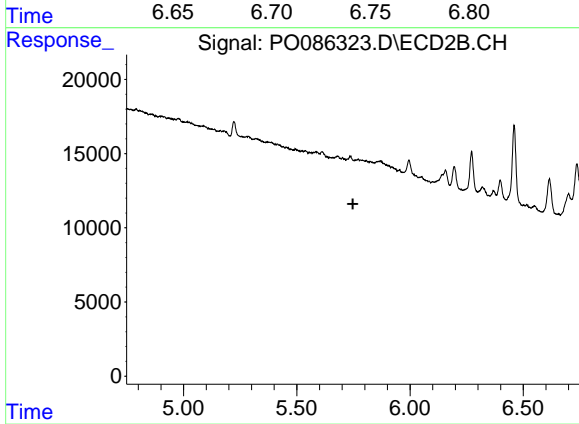
#26 AR-1254-1

R.T.: 0.000 min
 Exp R.T. : 5.600 min
 Response: 0
 Conc: N.D.



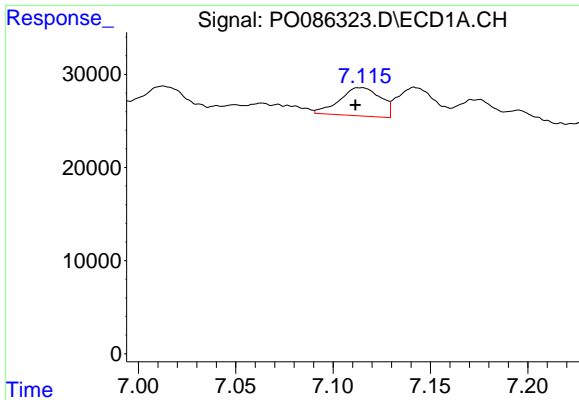
#27 AR-1254-2

R.T.: 6.741 min
 Delta R.T.: -0.002 min
 Response: 13378
 Conc: 2.72 ng/ml



#27 AR-1254-2

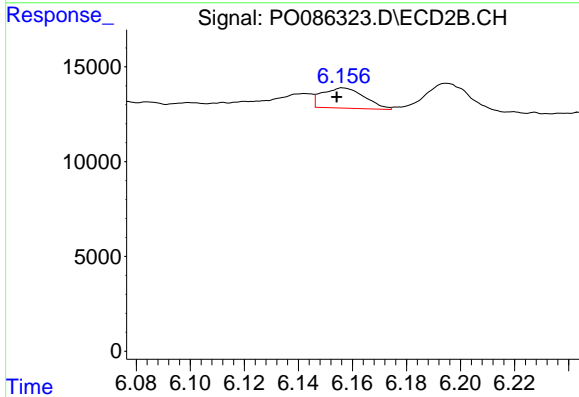
R.T.: 0.000 min
 Exp R.T. : 5.748 min
 Response: 0
 Conc: N.D.



#28 AR-1254-3

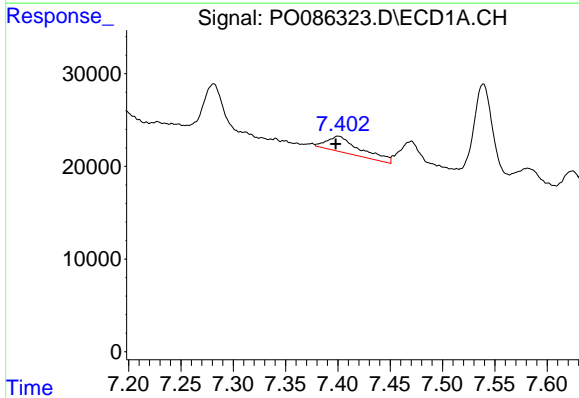
R.T.: 7.115 min
 Delta R.T.: 0.004 min
 Response: 44437
 Conc: 8.80 ng/ml

Instrument :
 ECD_O
 ClientSampleId :



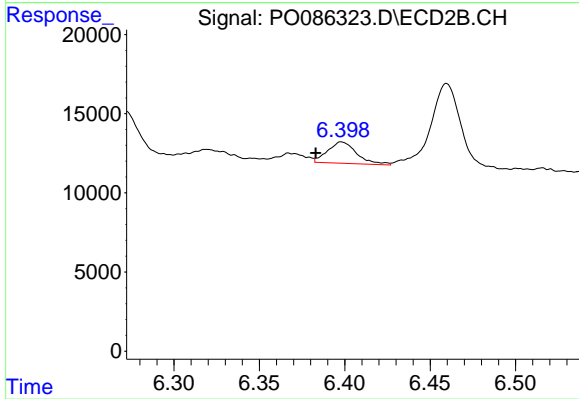
#28 AR-1254-3

R.T.: 6.157 min
 Delta R.T.: 0.002 min
 Response: 11558
 Conc: 3.27 ng/ml



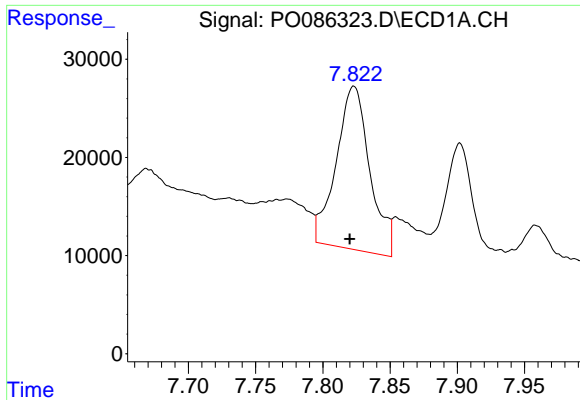
#29 AR-1254-4

R.T.: 7.400 min
 Delta R.T.: 0.002 min
 Response: 38196
 Conc: 10.25 ng/ml



#29 AR-1254-4

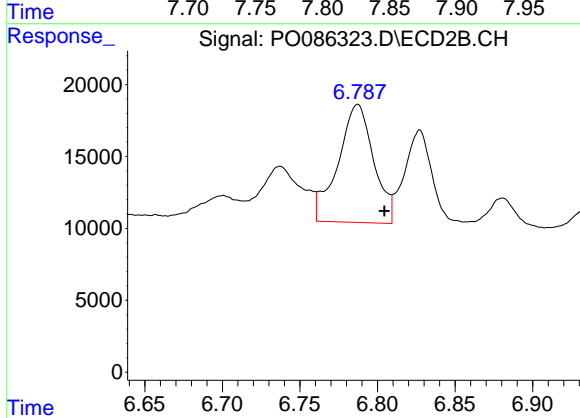
R.T.: 6.398 min
 Delta R.T.: 0.015 min
 Response: 15939
 Conc: 7.20 ng/ml



#30 AR-1254-5

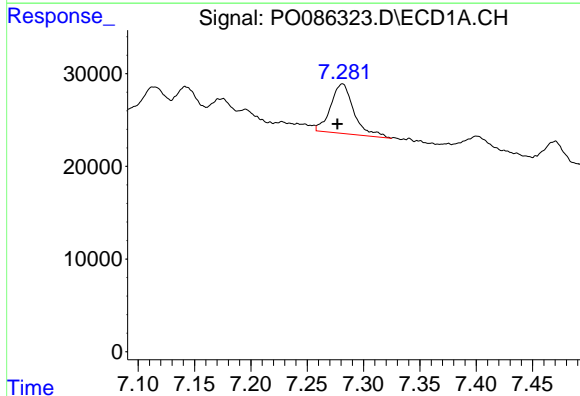
R.T.: 7.823 min
 Delta R.T.: 0.003 min
 Response: 289766
 Conc: 74.37 ng/ml

Instrument :
 ECD_O
 ClientSampleId :



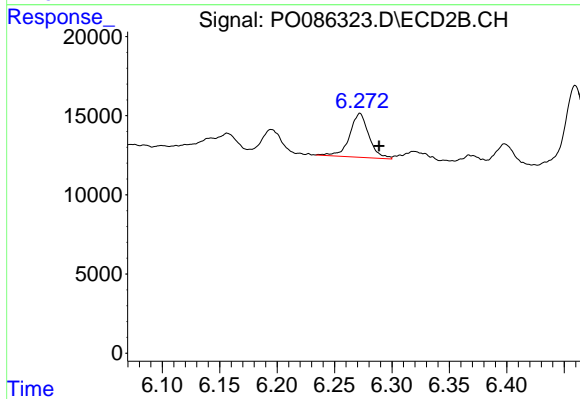
#30 AR-1254-5

R.T.: 6.787 min
 Delta R.T.: -0.017 min
 Response: 131117
 Conc: 44.33 ng/ml



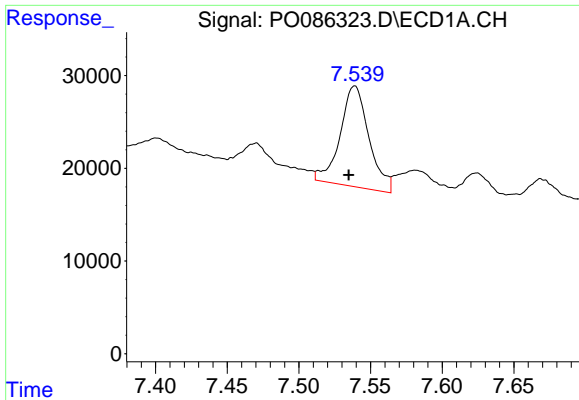
#31 AR-1260-1

R.T.: 7.281 min
 Delta R.T.: 0.004 min
 Response: 76750
 Conc: 25.36 ng/ml



#31 AR-1260-1

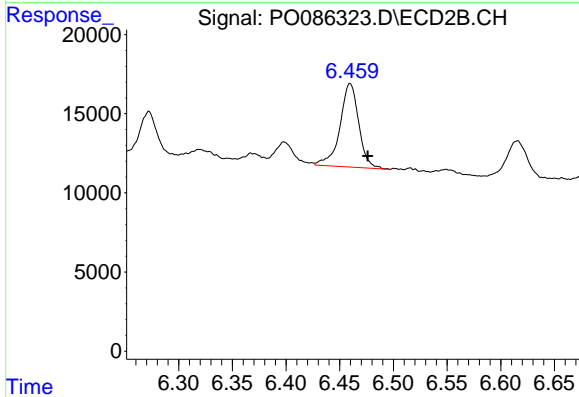
R.T.: 6.272 min
 Delta R.T.: -0.016 min
 Response: 32416
 Conc: 16.65 ng/ml



#32 AR-1260-2

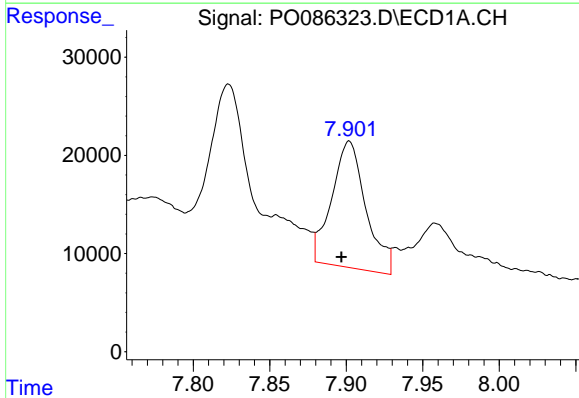
R.T.: 7.539 min
 Delta R.T.: 0.004 min
 Response: 152495
 Conc: 42.15 ng/ml

Instrument :
 ECD_O
 ClientSampleId :



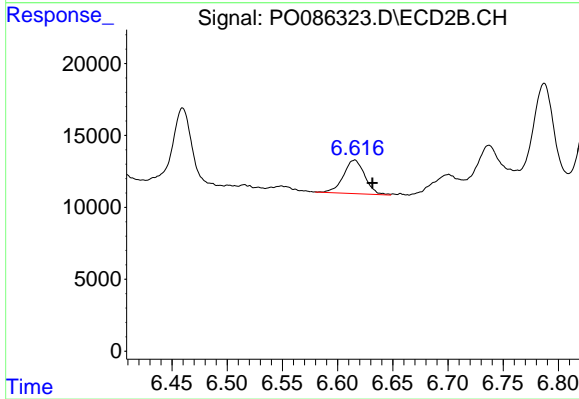
#32 AR-1260-2

R.T.: 6.460 min
 Delta R.T.: -0.016 min
 Response: 64375
 Conc: 27.39 ng/ml



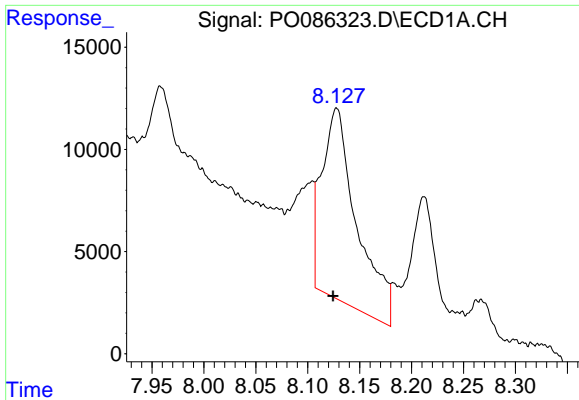
#33 AR-1260-3

R.T.: 7.902 min
 Delta R.T.: 0.005 min
 Response: 200818
 Conc: 72.76 ng/ml



#33 AR-1260-3

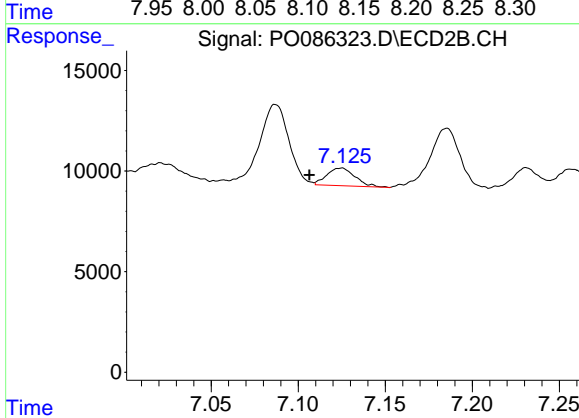
R.T.: 6.616 min
 Delta R.T.: -0.016 min
 Response: 31501
 Conc: 14.65 ng/ml



#34 AR-1260-4

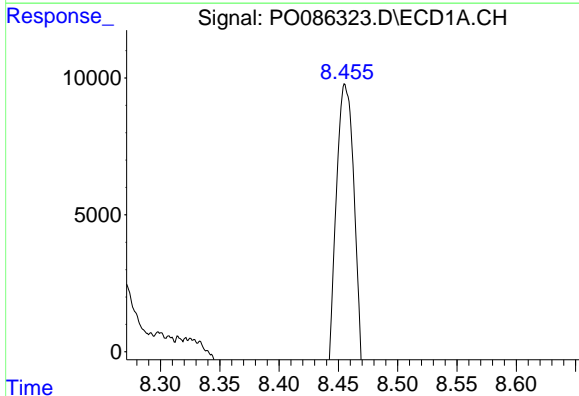
R.T.: 8.128 min
 Delta R.T.: 0.003 min
 Response: 218207
 Conc: 64.67 ng/ml

Instrument :
 ECD_O
 ClientSampleId :



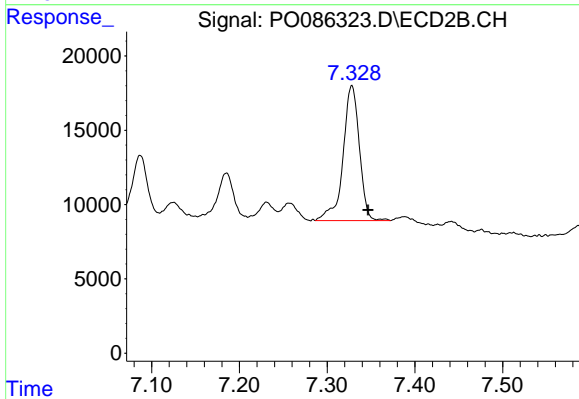
#34 AR-1260-4

R.T.: 7.125 min
 Delta R.T.: 0.018 min
 Response: 9867
 Conc: 5.48 ng/ml



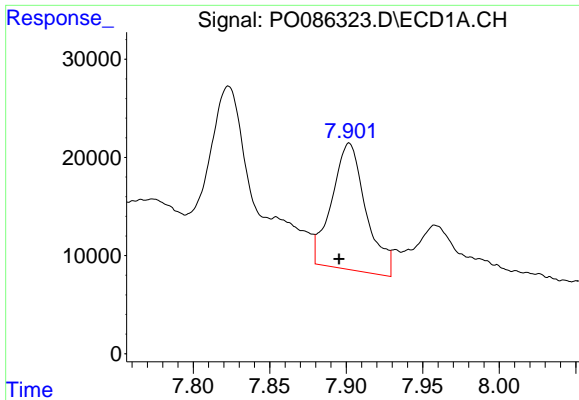
#35 AR-1260-5

R.T.: 8.455 min
 Delta R.T.: 0.003 min
 Response: 220433
 Conc: 35.72 ng/ml



#35 AR-1260-5

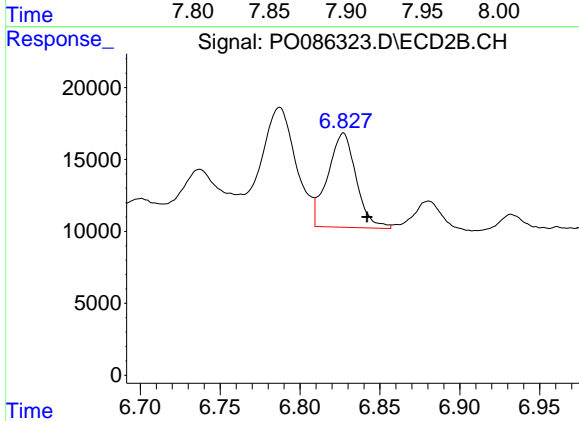
R.T.: 7.328 min
 Delta R.T.: -0.018 min
 Response: 117553
 Conc: 27.14 ng/ml



#36 AR-1262-1

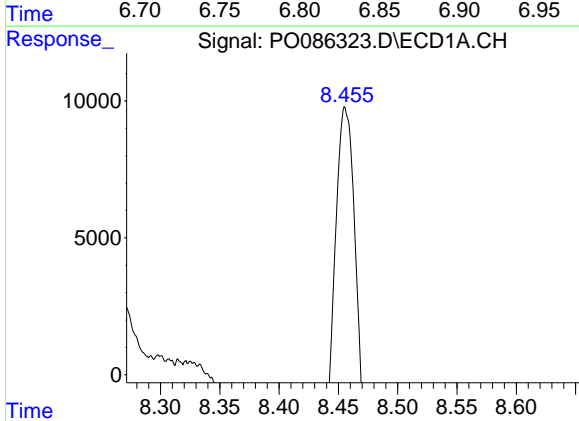
R.T.: 7.902 min
 Delta R.T.: 0.007 min
 Response: 200818
 Conc: 44.40 ng/ml

Instrument :
 ECD_O
 ClientSampleId :



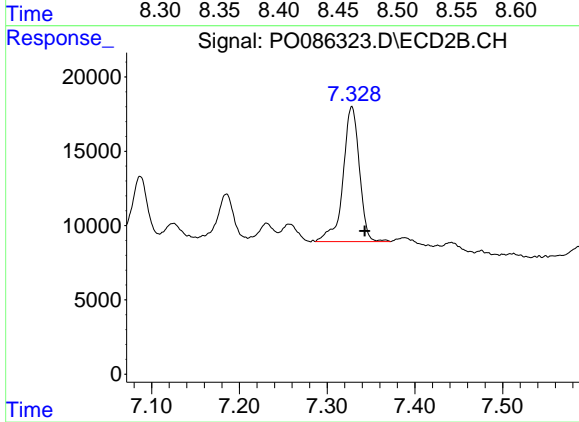
#36 AR-1262-1

R.T.: 6.827 min
 Delta R.T.: -0.015 min
 Response: 81605
 Conc: 27.01 ng/ml



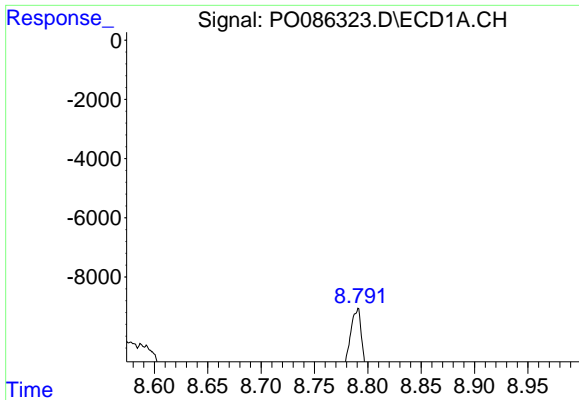
#37 AR-1262-2

R.T.: 8.455 min
 Delta R.T.: 0.005 min
 Response: 220433
 Conc: 28.16 ng/ml



#37 AR-1262-2

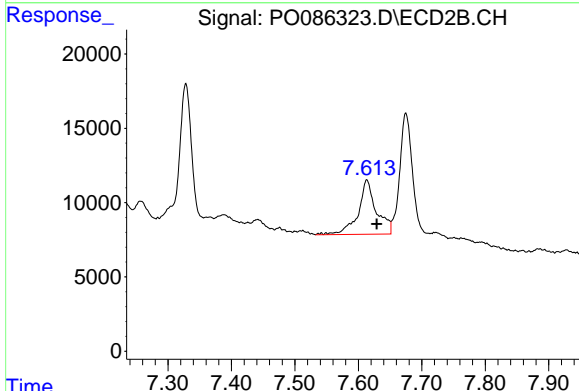
R.T.: 7.328 min
 Delta R.T.: -0.015 min
 Response: 117553
 Conc: 21.40 ng/ml



#38 AR-1262-3

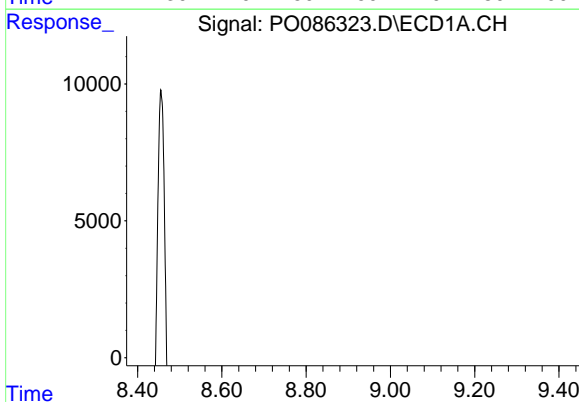
R.T.: 8.790 min
 Delta R.T.: 0.017 min
 Response: 197890
 Conc: 37.63 ng/ml

Instrument :
 ECD_O
 ClientSampleId :



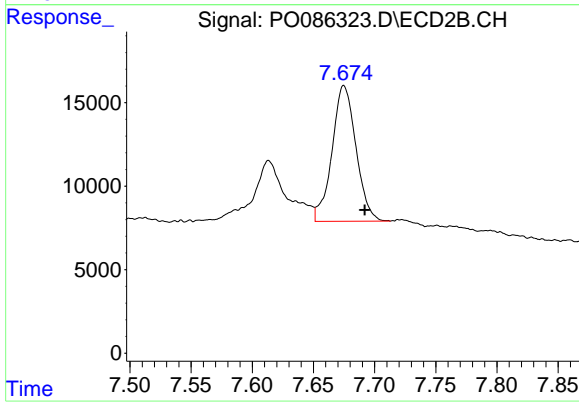
#38 AR-1262-3

R.T.: 7.613 min
 Delta R.T.: -0.016 min
 Response: 72778
 Conc: 34.53 ng/ml



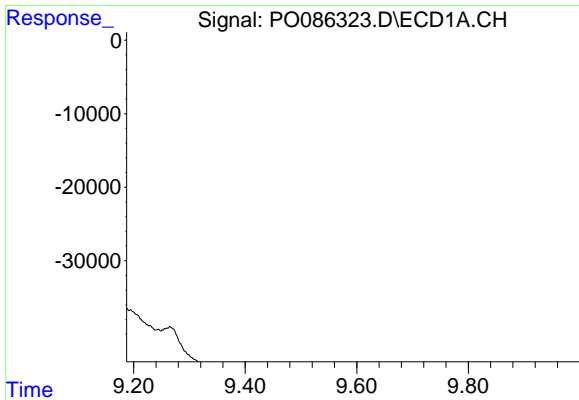
#39 AR-1262-4

R.T.: 8.845 min
 Delta R.T.: -0.019 min
 Response: 137682
 Conc: 57.53 ng/ml



#39 AR-1262-4

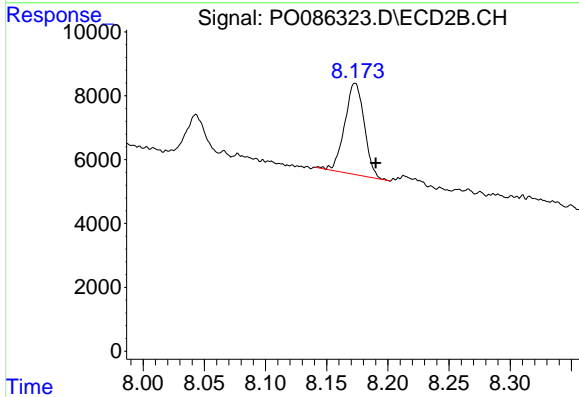
R.T.: 7.675 min
 Delta R.T.: -0.017 min
 Response: 110800
 Conc: 27.95 ng/ml



#40 AR-1262-5

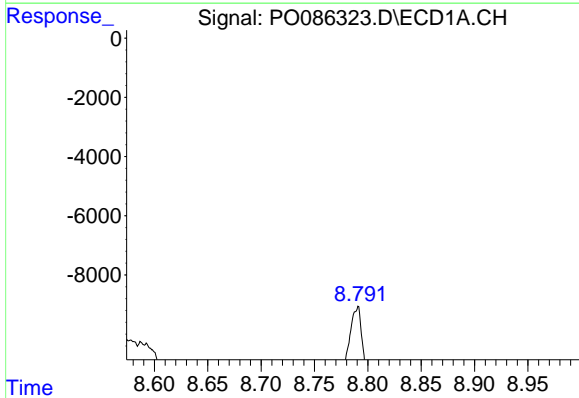
R.T.: 9.544 min
 Delta R.T.: 0.006 min
 Response: 89865
 Conc: 32.56 ng/ml

Instrument :
 ECD_O
 ClientSampleId :



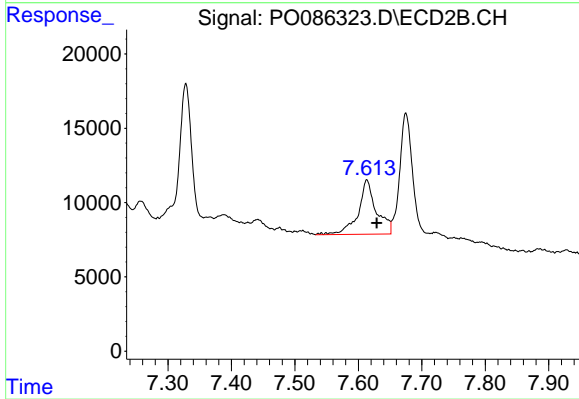
#40 AR-1262-5

R.T.: 8.173 min
 Delta R.T.: -0.017 min
 Response: 31902
 Conc: 17.81 ng/ml



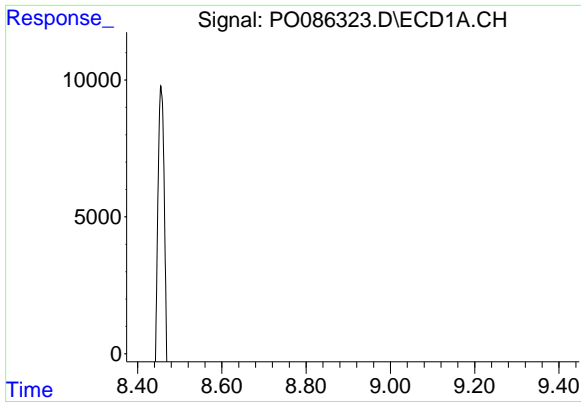
#41 AR-1268-1

R.T.: 8.790 min
 Delta R.T.: 0.020 min
 Response: 197890
 Conc: 22.67 ng/ml



#41 AR-1268-1

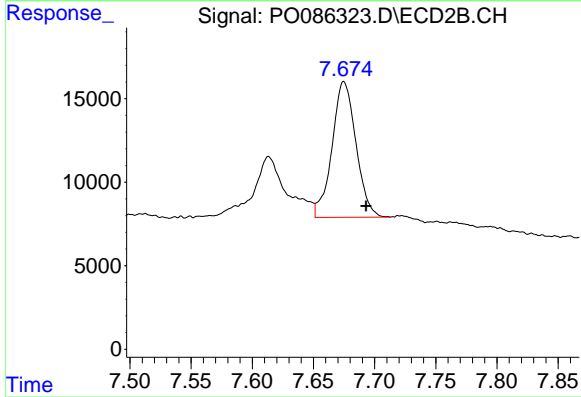
R.T.: 7.613 min
 Delta R.T.: -0.016 min
 Response: 72778
 Conc: 11.93 ng/ml



#42 AR-1268-2

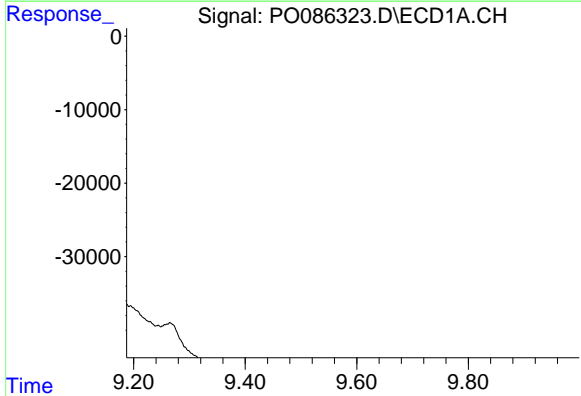
R.T.: 8.845 min
 Delta R.T.: -0.022 min
 Response: 137682
 Conc: 17.21 ng/ml

Instrument :
 ECD_O
 ClientSampleId :



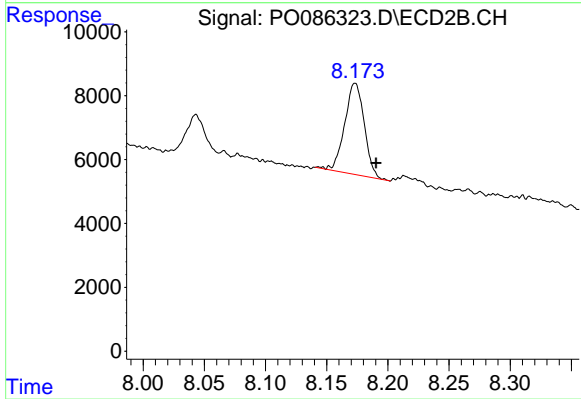
#42 AR-1268-2

R.T.: 7.675 min
 Delta R.T.: -0.018 min
 Response: 110800
 Conc: 20.18 ng/ml



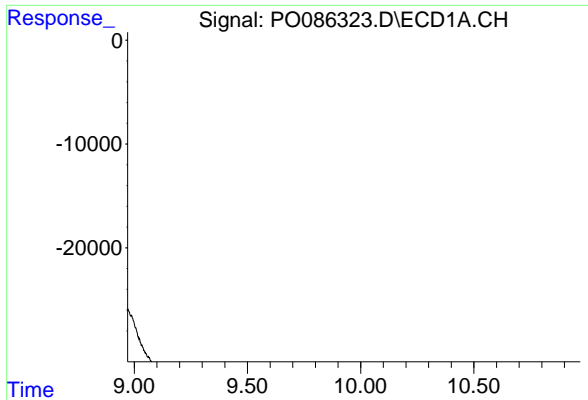
#44 AR-1268-4

R.T.: 9.544 min
 Delta R.T.: 0.003 min
 Response: 89865
 Conc: 29.76 ng/ml



#44 AR-1268-4

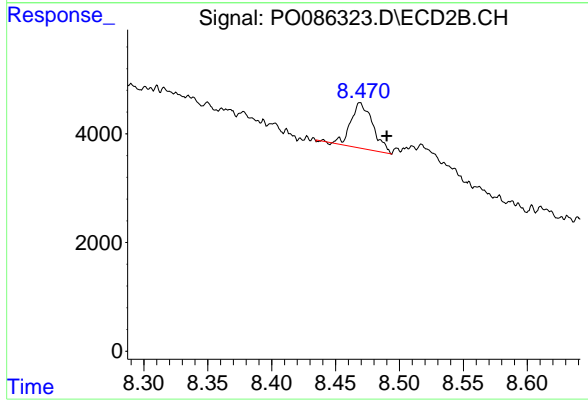
R.T.: 8.173 min
 Delta R.T.: -0.017 min
 Response: 31902
 Conc: 16.34 ng/ml



#45 AR-1268-5

R.T.: 0.000 min
 Exp R.T.: 9.971 min
 Response: 0
 Conc: N.D.

Instrument :
 ECD_O
 ClientSampleId :



#45 AR-1268-5

R.T.: 8.469 min
 Delta R.T.: -0.021 min
 Response: 10122
 Conc: 0.69 ng/ml