

Data Path : Z:\pestpcbsrv\HPCHEM1\ECD_0\Data\P0052122\
 Data File : P0086335.D
 Signal(s) : Signal #1: ECD1A.CH Signal #2: ECD2B.CH
 Acq On : 21 May 2022 19:53
 Operator : YP\AJ
 Sample : N2874-13
 Misc :
 ALS Vial : 28 Sample Multiplier: 1

Instrument :
 ECD_0
ClientSampleId :
 P007-SS003-1218-01

Manual Integrations
APPROVED

Reviewed By :Yogesh Patel 05/23/2022
 Supervised By :Ankita Jodhani 05/23/2022

Integration File signal 1: autoint1.e
 Integration File signal 2: autoint2.e
 Quant Time: May 22 13:19:31 2022
 Quant Method : Z:\pestpcbsrv\HPCHEM1\ECD_0\methods\P0051122.M
 Quant Title : GC EXTRACTABLES
 QLast Update : Thu May 19 09:06:34 2022
 Response via : Initial Calibration
 Integrator: ChemStation 6890 Scale Mode: Small noise peaks clipped

Volume Inj. : 2 µl
 Signal #1 Phase : ZB-MR1 Signal #2 Phase: ZB-MR2
 Signal #1 Info : 30Mx0.32mmx 0.50µ Signal #2 Info : 30M x 0.32mm x 0.25µm

Compound	RT#1	RT#2	Resp#1	Resp#2	ng/ml	ng/ml

System Monitoring Compounds						
1) SA Tetrachlo...	4.479	3.676	2371320	963689	23.338	22.124
2) SA Decachlor...	10.332	8.732	807290	437963	14.867	12.585
Target Compounds						
31) L7 AR-1260-1	7.281	6.271	1695758	962216	560.319	494.377
32) L7 AR-1260-2	7.539	6.459	1469967	813630	406.350	346.178
33) L7 AR-1260-3	7.901	6.614	922352	684477	334.186	318.321
34) L7 AR-1260-4	8.129	7.087	906186	306919	268.580	170.451m#
35) L7 AR-1260-5	8.458	7.327	983856	605549	159.439	139.791

(f)=RT Delta > 1/2 Window (#)=Amounts differ by > 25% (m)=manual int.

Data Path : Z:\pestpcbsrv\HPCHEM1\ECD_0\Data\P0052122\
 Data File : P0086335.D
 Signal(s) : Signal #1: ECD1A.CH Signal #2: ECD2B.CH
 Acq On : 21 May 2022 19:53
 Operator : YP\AJ
 Sample : N2874-13
 Misc :
 ALS Vial : 28 Sample Multiplier: 1

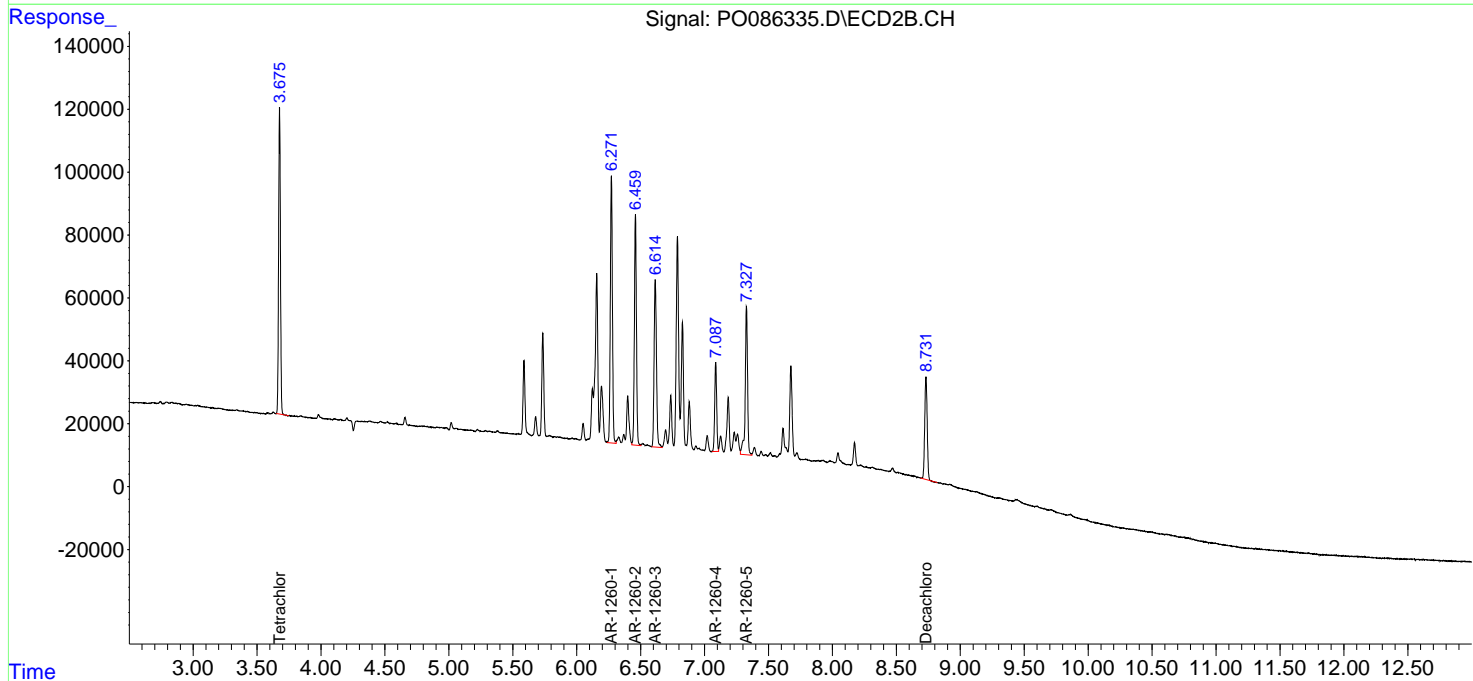
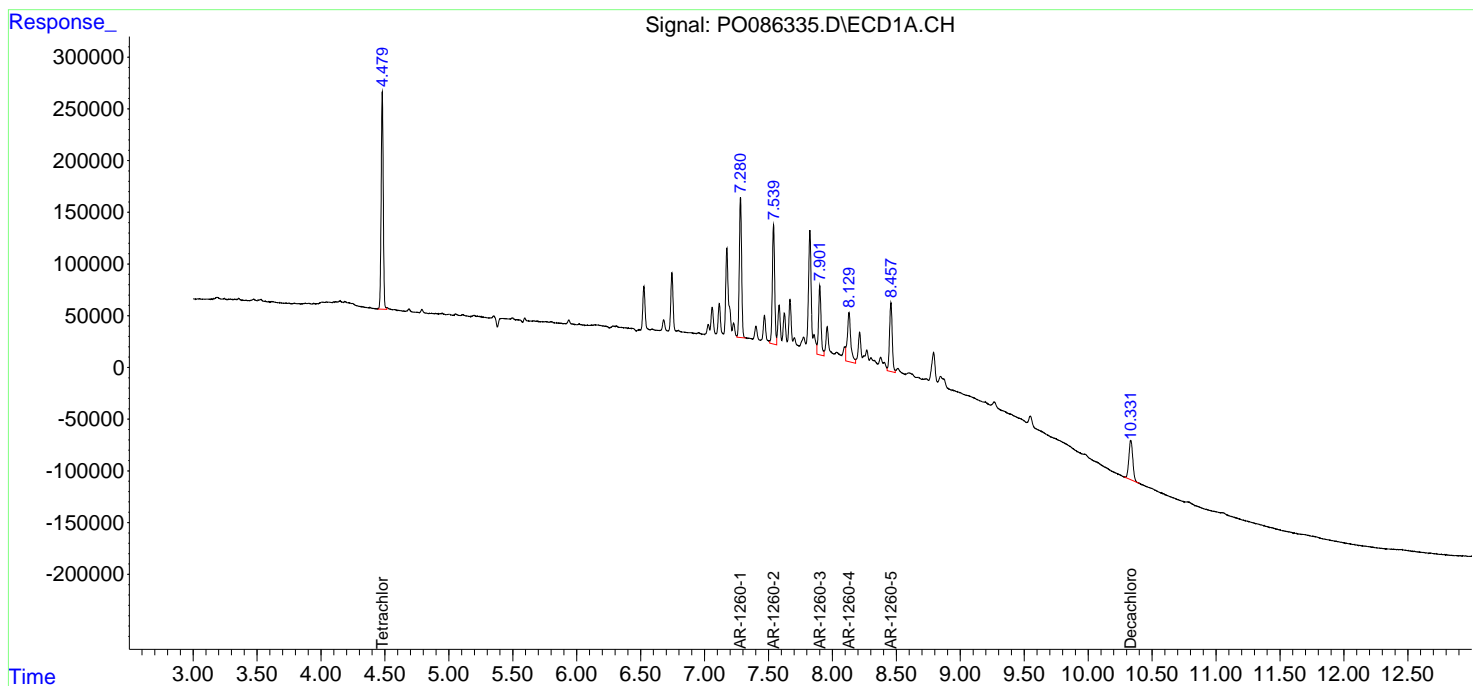
Instrument :
 ECD_0
 ClientSampleId :
 P007-SS003-1218-01

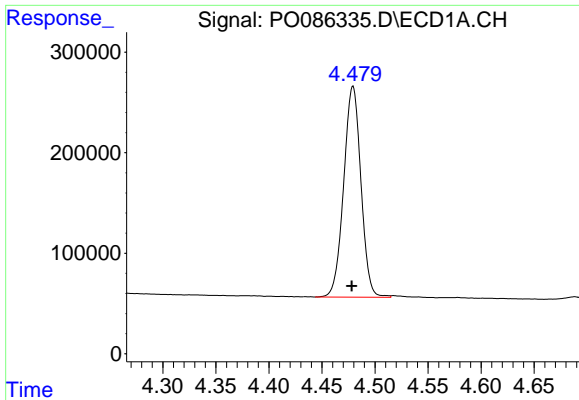
Manual Integrations
 APPROVED

Reviewed By :Yogesh Patel 05/23/2022
 Supervised By :Ankita Jodhani 05/23/2022

Integration File signal 1: autoint1.e
 Integration File signal 2: autoint2.e
 Quant Time: May 22 13:19:31 2022
 Quant Method : Z:\pestpcbsrv\HPCHEM1\ECD_0\methods\P0051122.M
 Quant Title : GC EXTRACTABLES
 QLast Update : Thu May 19 09:06:34 2022
 Response via : Initial Calibration
 Integrator: ChemStation 6890 Scale Mode: Small noise peaks clipped

Volume Inj. : 2 µl
 Signal #1 Phase : ZB-MR1 Signal #2 Phase: ZB-MR2
 Signal #1 Info : 30Mx0.32mmx 0.50µ Signal #2 Info : 30M x 0.32mm x 0.25µm





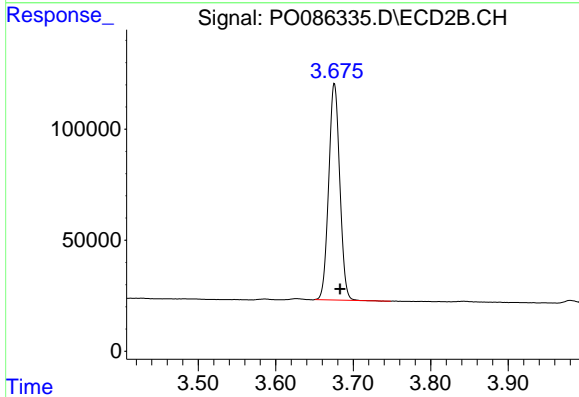
#1 Tetrachloro-m-xylene

R.T.: 4.479 min
 Delta R.T.: 0.001 min
 Response: 2371320
 Conc: 23.34 ng/ml

Instrument :
 ECD_O
 ClientSampleId :
 P007-SS003-1218-01

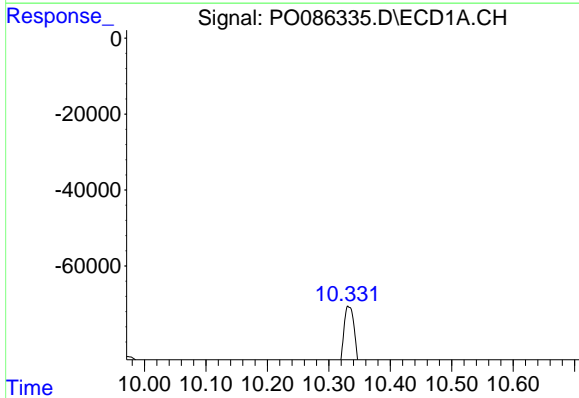
Manual Integrations
 APPROVED

Reviewed By :Yogesh Patel 05/23/2022
 Supervised By :Ankita Jodhani 05/23/2022



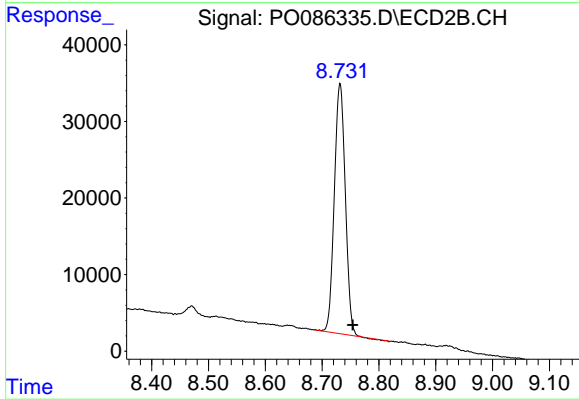
#1 Tetrachloro-m-xylene

R.T.: 3.676 min
 Delta R.T.: -0.008 min
 Response: 963689
 Conc: 22.12 ng/ml



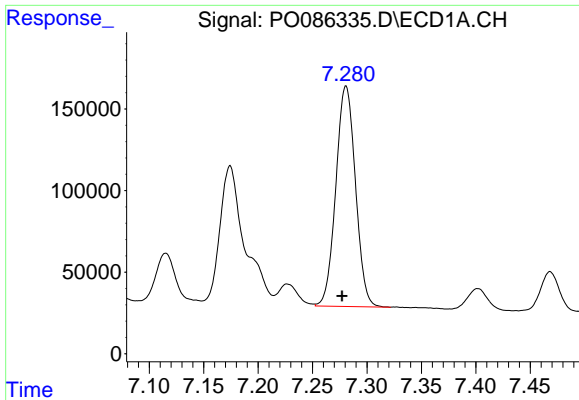
#2 Decachlorobiphenyl

R.T.: 10.332 min
 Delta R.T.: 0.007 min
 Response: 807290
 Conc: 14.87 ng/ml



#2 Decachlorobiphenyl

R.T.: 8.732 min
 Delta R.T.: -0.022 min
 Response: 437963
 Conc: 12.58 ng/ml



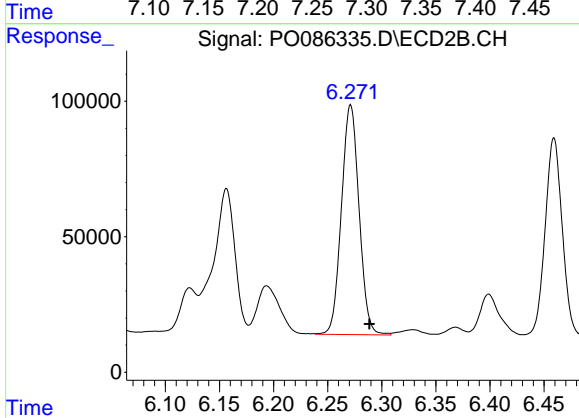
#31 AR-1260-1

R.T.: 7.281 min
 Delta R.T.: 0.004 min
 Response: 1695758
 Conc: 560.32 ng/ml

Instrument :
 ECD_O
 ClientSampleId :
 P007-SS003-1218-01

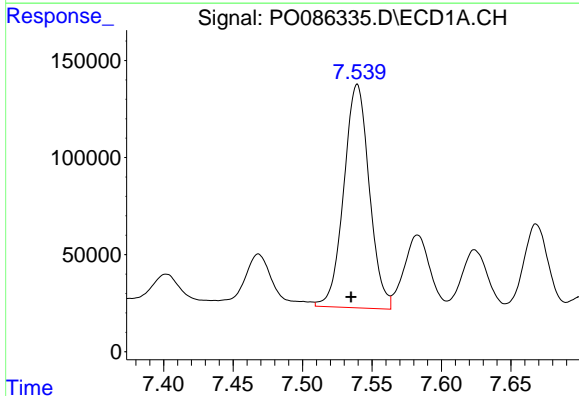
Manual Integrations
APPROVED

Reviewed By :Yogesh Patel 05/23/2022
 Supervised By :Ankita Jodhani 05/23/2022



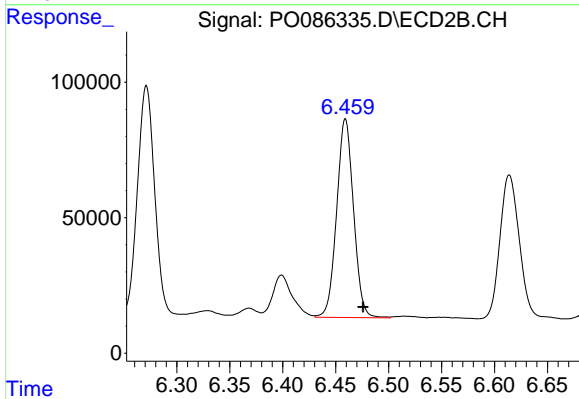
#31 AR-1260-1

R.T.: 6.271 min
 Delta R.T.: -0.017 min
 Response: 962216
 Conc: 494.38 ng/ml



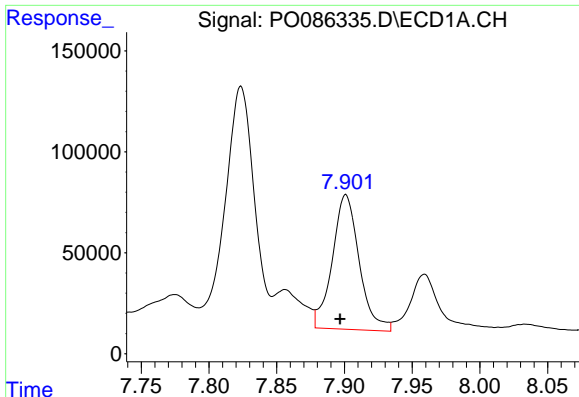
#32 AR-1260-2

R.T.: 7.539 min
 Delta R.T.: 0.005 min
 Response: 1469967
 Conc: 406.35 ng/ml



#32 AR-1260-2

R.T.: 6.459 min
 Delta R.T.: -0.017 min
 Response: 813630
 Conc: 346.18 ng/ml



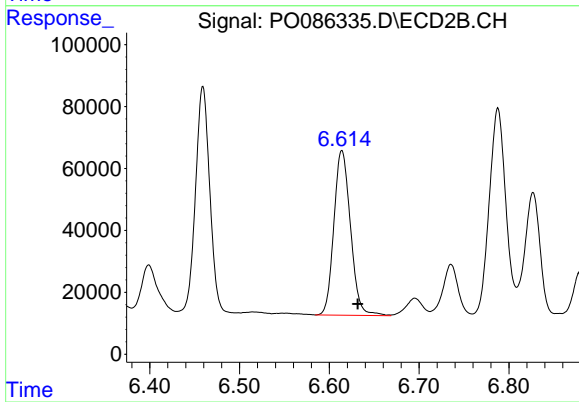
#33 AR-1260-3

R.T.: 7.901 min
 Delta R.T.: 0.004 min
 Response: 922352
 Conc: 334.19 ng/ml

Instrument :
 ECD_O
 ClientSampleId :
 P007-SS003-1218-01

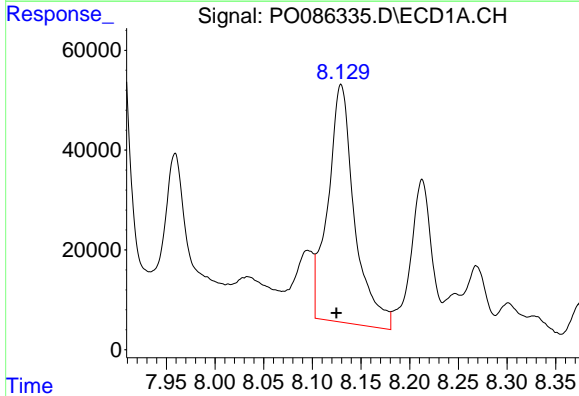
Manual Integrations
 APPROVED

Reviewed By :Yogesh Patel 05/23/2022
 Supervised By :Ankita Jodhani 05/23/2022



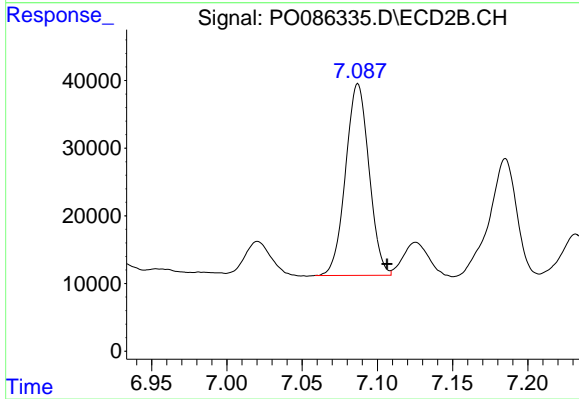
#33 AR-1260-3

R.T.: 6.614 min
 Delta R.T.: -0.018 min
 Response: 684477
 Conc: 318.32 ng/ml



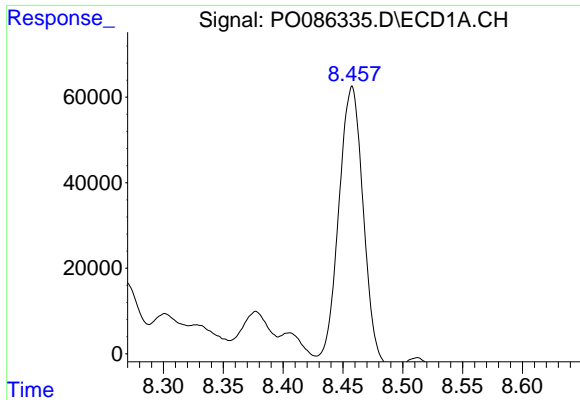
#34 AR-1260-4

R.T.: 8.129 min
 Delta R.T.: 0.005 min
 Response: 906186
 Conc: 268.58 ng/ml



#34 AR-1260-4

R.T.: 7.087 min
 Delta R.T.: -0.020 min
 Response: 306919
 Conc: 170.45 ng/ml m



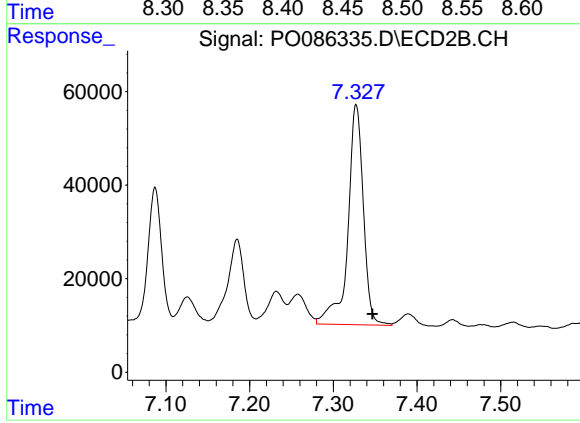
#35 AR-1260-5

R.T.: 8.458 min
 Delta R.T.: 0.005 min
 Response: 983856
 Conc: 159.44 ng/ml

Instrument :
 ECD_O
 ClientSampleId :
 P007-SS003-1218-01

Manual Integrations
 APPROVED

Reviewed By :Yogesh Patel 05/23/2022
 Supervised By :Ankita Jodhani 05/23/2022



#35 AR-1260-5

R.T.: 7.327 min
 Delta R.T.: -0.019 min
 Response: 605549
 Conc: 139.79 ng/ml