

Data Path : Z:\pestpcbsrv\HPCHEM1\ECD_0\Data\P0052122\
 Data File : P0086341.D
 Signal(s) : Signal #1: ECD1A.CH Signal #2: ECD2B.CH
 Acq On : 21 May 2022 21:31
 Operator : YP\AJ
 Sample : N2872-10
 Misc :
 ALS Vial : 34 Sample Multiplier: 1

Instrument :
 ECD_0
ClientSampleId :
 P022-SS001-0006-01

Manual Integrations
APPROVED

Reviewed By :Yogesh Patel 05/23/2022
 Supervised By :Ankita Jodhani 05/23/2022

Integration File signal 1: autoint1.e
 Integration File signal 2: autoint2.e
 Quant Time: May 22 13:22:25 2022
 Quant Method : Z:\pestpcbsrv\HPCHEM1\ECD_0\methods\P0051122.M
 Quant Title : GC EXTRACTABLES
 QLast Update : Thu May 19 09:06:34 2022
 Response via : Initial Calibration
 Integrator: ChemStation 6890 Scale Mode: Small noise peaks clipped

Volume Inj. : 2 µl
 Signal #1 Phase : ZB-MR1 Signal #2 Phase: ZB-MR2
 Signal #1 Info : 30Mx0.32mmx 0.50µ Signal #2 Info : 30M x 0.32mm x 0.25µm

Compound	RT#1	RT#2	Resp#1	Resp#2	ng/ml	ng/ml

System Monitoring Compounds						
1) SA Tetrachlo...	4.479	3.676	2317122	933407	22.805	21.429
2) SA Decachlor...	10.334	8.731	1173773	662159	21.617	19.027
Target Compounds						
31) L7 AR-1260-1	7.280	6.272	248740	127107	82.190	65.306
32) L7 AR-1260-2	7.539	6.459	1107084	588927	306.036	250.573
33) L7 AR-1260-3	7.901	6.614	1246808	262655	451.742	122.150 #
34) L7 AR-1260-4	8.129	7.086	1268702	485046	376.025	269.375m#
35) L7 AR-1260-5	8.457	7.328	2523625	1623005	408.967	374.671

(f)=RT Delta > 1/2 Window (#)=Amounts differ by > 25% (m)=manual int.

Data Path : Z:\pestpcbsrv\HPCHEM1\ECD_O\Data\P0052122\
 Data File : P0086341.D
 Signal(s) : Signal #1: ECD1A.CH Signal #2: ECD2B.CH
 Acq On : 21 May 2022 21:31
 Operator : YP\AJ
 Sample : N2872-10
 Misc :
 ALS Vial : 34 Sample Multiplier: 1

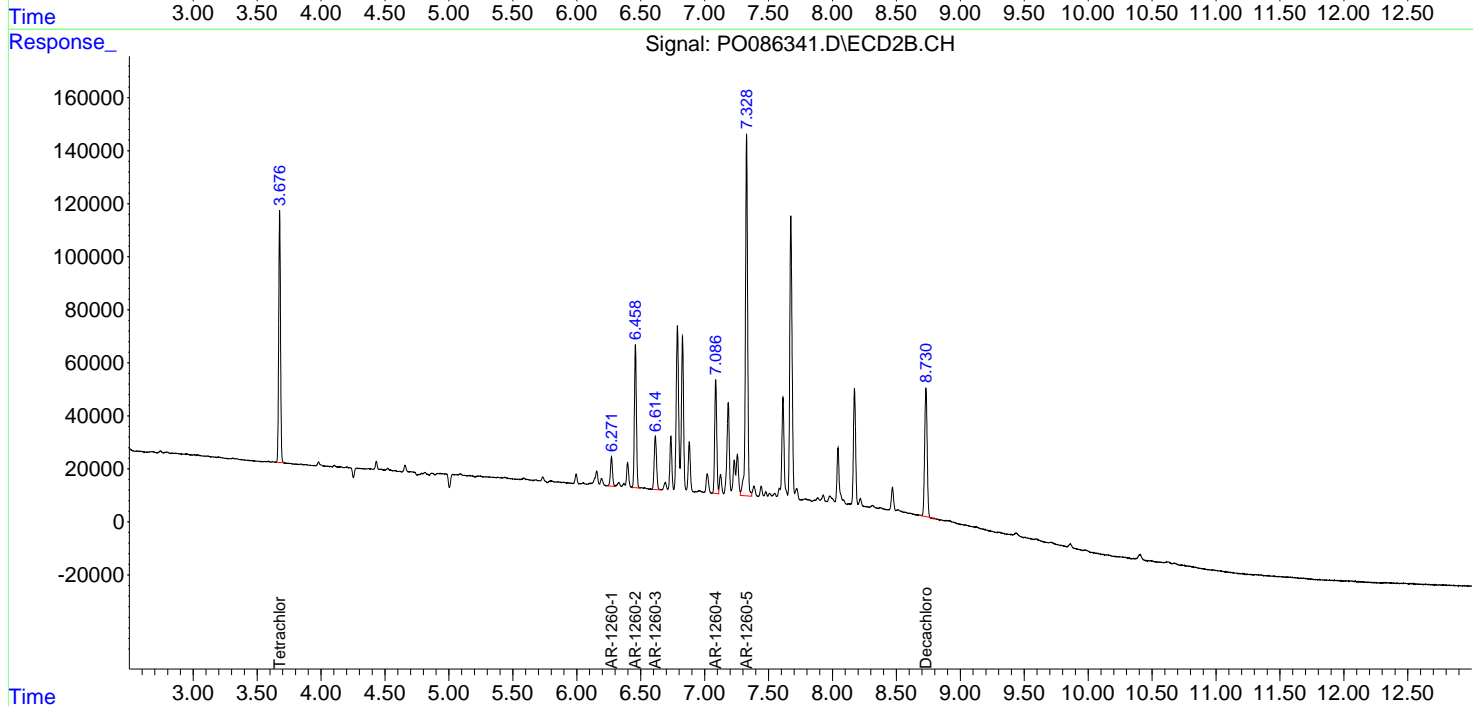
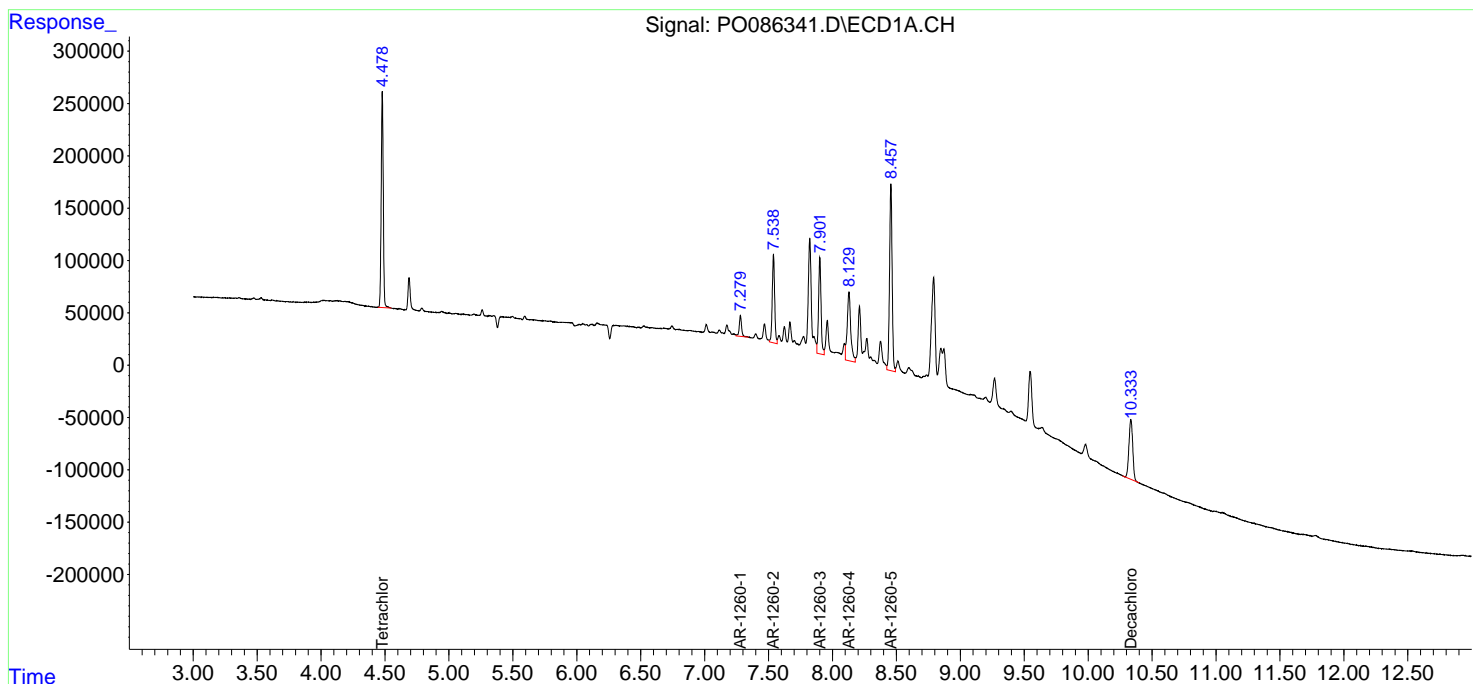
Instrument :
 ECD_O
 ClientSampleId :
 P022-SS001-0006-01

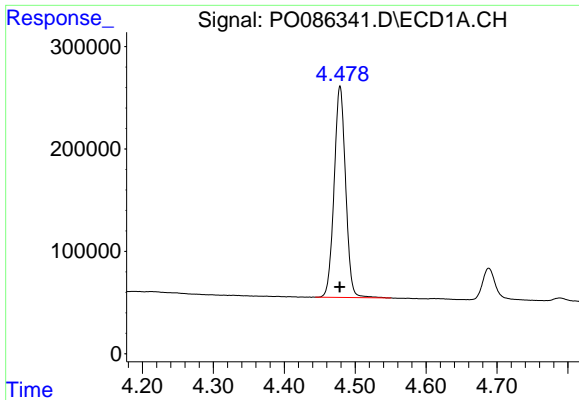
Manual Integrations
 APPROVED

Reviewed By :Yogesh Patel 05/23/2022
 Supervised By :Ankita Jodhani 05/23/2022

Integration File signal 1: autoint1.e
 Integration File signal 2: autoint2.e
 Quant Time: May 22 13:22:25 2022
 Quant Method : Z:\pestpcbsrv\HPCHEM1\ECD_O\methods\P0051122.M
 Quant Title : GC EXTRACTABLES
 QLast Update : Thu May 19 09:06:34 2022
 Response via : Initial Calibration
 Integrator: ChemStation 6890 Scale Mode: Small noise peaks clipped

Volume Inj. : 2 µl
 Signal #1 Phase : ZB-MR1 Signal #2 Phase: ZB-MR2
 Signal #1 Info : 30Mx0.32mmx 0.50µ Signal #2 Info : 30M x 0.32mm x 0.25µm



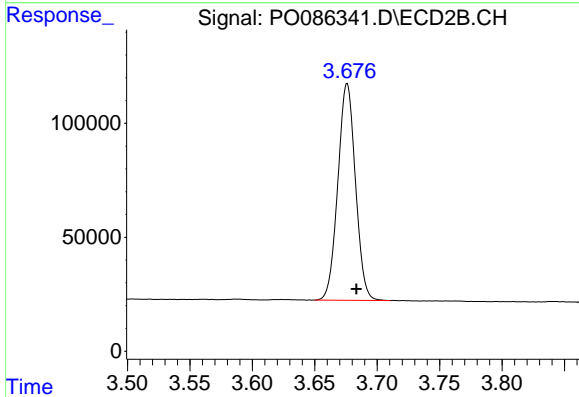


#1 Tetrachloro-m-xylene
 R.T.: 4.479 min
 Delta R.T.: 0.000 min
 Response: 2317122
 Conc: 22.80 ng/ml

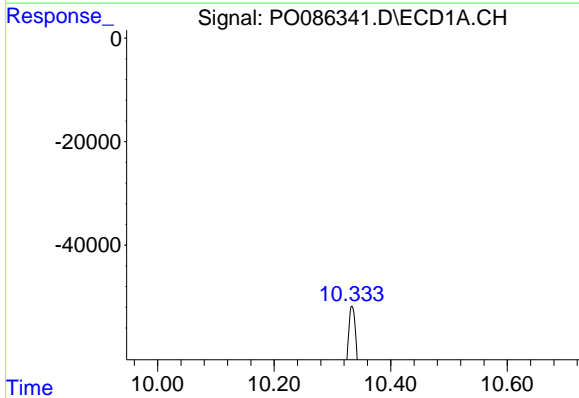
Instrument :
 ECD_O
 ClientSampleId :
 P022-SS001-0006-01

Manual Integrations
 APPROVED

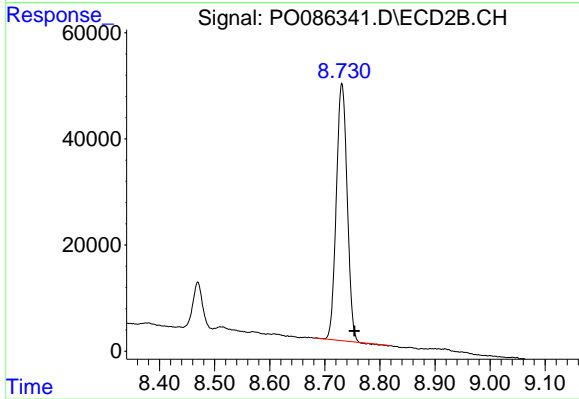
Reviewed By :Yogesh Patel 05/23/2022
 Supervised By :Ankita Jodhani 05/23/2022



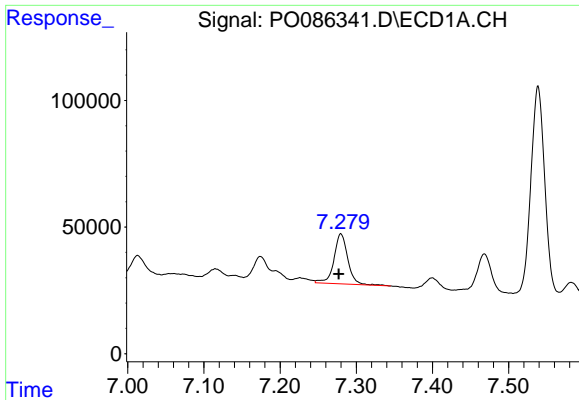
#1 Tetrachloro-m-xylene
 R.T.: 3.676 min
 Delta R.T.: -0.007 min
 Response: 933407
 Conc: 21.43 ng/ml



#2 Decachlorobiphenyl
 R.T.: 10.334 min
 Delta R.T.: 0.009 min
 Response: 1173773
 Conc: 21.62 ng/ml



#2 Decachlorobiphenyl
 R.T.: 8.731 min
 Delta R.T.: -0.023 min
 Response: 662159
 Conc: 19.03 ng/ml



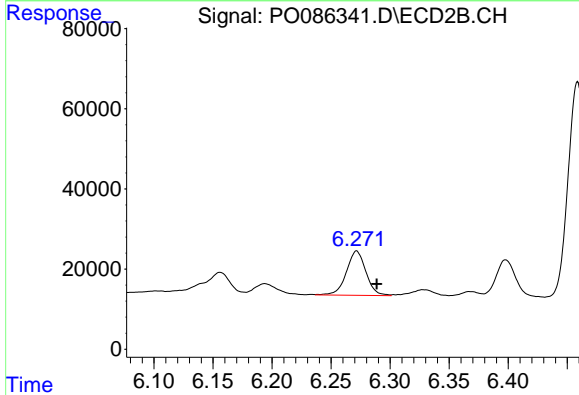
#31 AR-1260-1

R.T.: 7.280 min
 Delta R.T.: 0.003 min
 Response: 248740
 Conc: 82.19 ng/ml

Instrument :
 ECD_O
 ClientSampleId :
 P022-SS001-0006-01

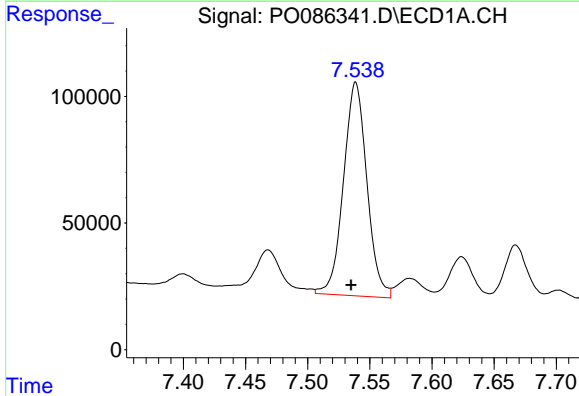
Manual Integrations
 APPROVED

Reviewed By :Yogesh Patel 05/23/2022
 Supervised By :Ankita Jodhani 05/23/2022



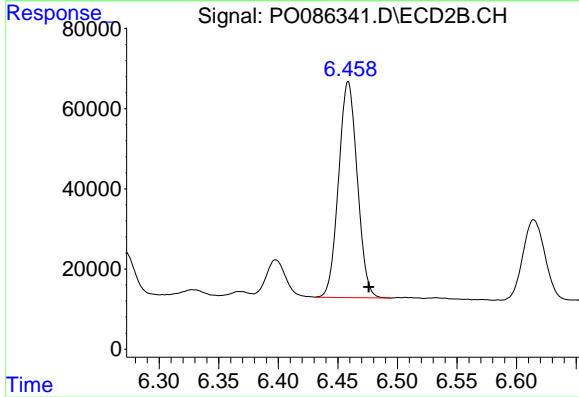
#31 AR-1260-1

R.T.: 6.272 min
 Delta R.T.: -0.017 min
 Response: 127107
 Conc: 65.31 ng/ml



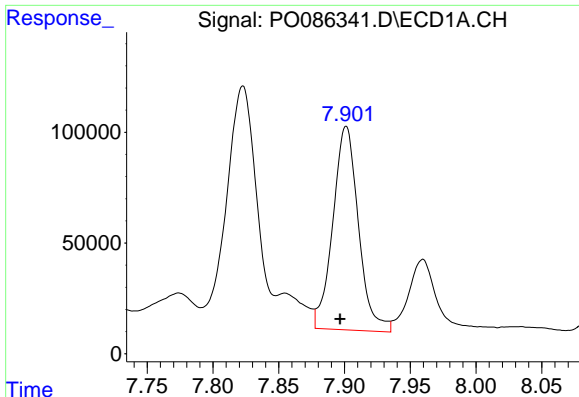
#32 AR-1260-2

R.T.: 7.539 min
 Delta R.T.: 0.004 min
 Response: 1107084
 Conc: 306.04 ng/ml



#32 AR-1260-2

R.T.: 6.459 min
 Delta R.T.: -0.017 min
 Response: 588927
 Conc: 250.57 ng/ml



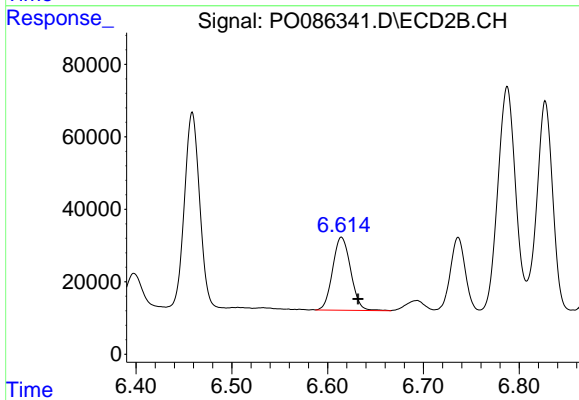
#33 AR-1260-3

R.T.: 7.901 min
 Delta R.T.: 0.004 min
 Response: 1246808
 Conc: 451.74 ng/ml

Instrument :
 ECD_O
 ClientSampleId :
 P022-SS001-0006-01

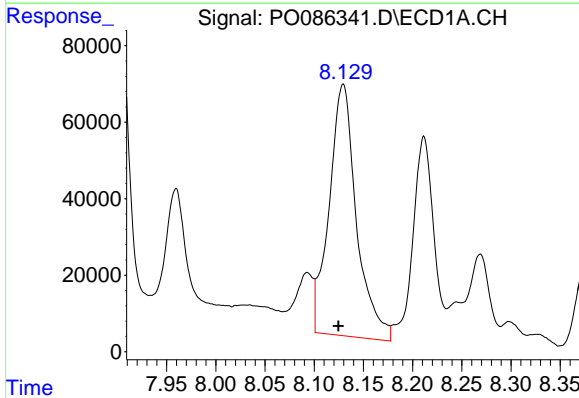
Manual Integrations
 APPROVED

Reviewed By :Yogesh Patel 05/23/2022
 Supervised By :Ankita Jodhani 05/23/2022



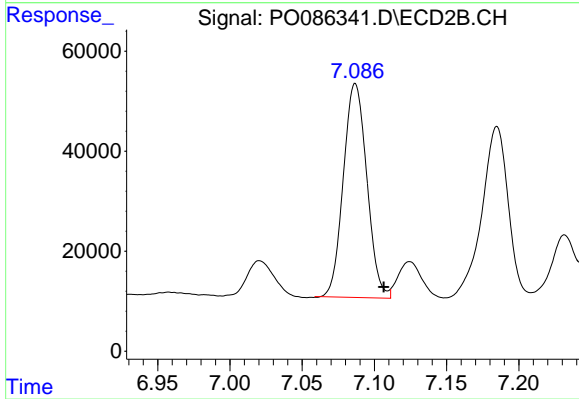
#33 AR-1260-3

R.T.: 6.614 min
 Delta R.T.: -0.017 min
 Response: 262655
 Conc: 122.15 ng/ml



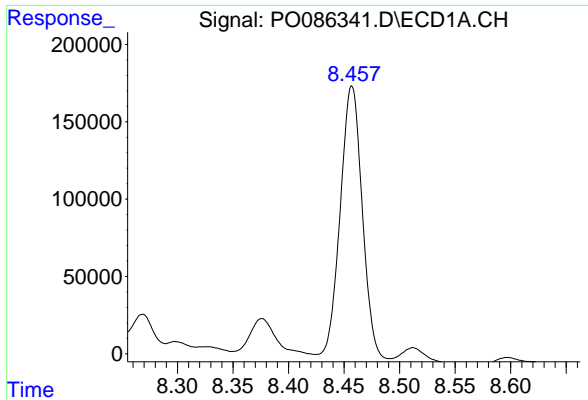
#34 AR-1260-4

R.T.: 8.129 min
 Delta R.T.: 0.005 min
 Response: 1268702
 Conc: 376.02 ng/ml



#34 AR-1260-4

R.T.: 7.086 min
 Delta R.T.: -0.020 min
 Response: 485046
 Conc: 269.38 ng/ml m



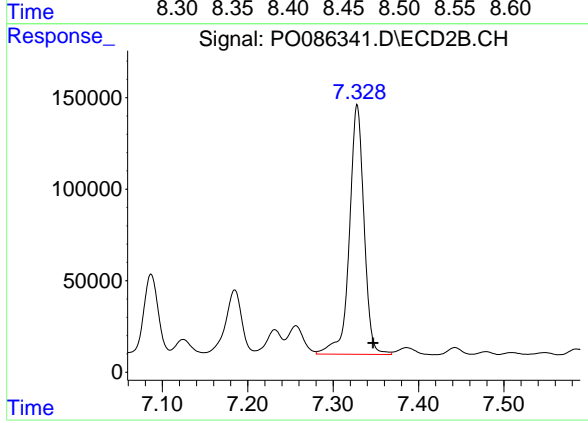
#35 AR-1260-5

R.T.: 8.457 min
 Delta R.T.: 0.004 min
 Response: 2523625
 Conc: 408.97 ng/ml

Instrument :
 ECD_O
 ClientSampleId :
 P022-SS001-0006-01

Manual Integrations
 APPROVED

Reviewed By :Yogesh Patel 05/23/2022
 Supervised By :Ankita Jodhani 05/23/2022



#35 AR-1260-5

R.T.: 7.328 min
 Delta R.T.: -0.018 min
 Response: 1623005
 Conc: 374.67 ng/ml