

Data Path : Z:\pestpcbsrv\HPCHEM1\ECD_0\Data\P0052122\
 Data File : P0086342.D
 Signal(s) : Signal #1: ECD1A.CH Signal #2: ECD2B.CH
 Acq On : 21 May 2022 22:18
 Operator : YP\AJ
 Sample : AR1660CCC500
 Misc :
 ALS Vial : 3 Sample Multiplier: 1

Instrument :
 ECD_0
ClientSampleId :
 AR1660CCC500

Manual Integrations
APPROVED
 Reviewed By :Yogesh Patel 05/23/2022
 Supervised By :Ankita Jodhani 05/23/2022

Integration File signal 1: autoint1.e
 Integration File signal 2: autoint2.e
 Quant Time: May 22 13:22:48 2022
 Quant Method : Z:\pestpcbsrv\HPCHEM1\ECD_0\methods\P0051122.M
 Quant Title : GC EXTRACTABLES
 QLast Update : Thu May 19 09:06:34 2022
 Response via : Initial Calibration
 Integrator: ChemStation 6890 Scale Mode: Small noise peaks clipped

Volume Inj. : 2 µl
 Signal #1 Phase : ZB-MR1 Signal #2 Phase: ZB-MR2
 Signal #1 Info : 30Mx0.32mmx 0.50µ Signal #2 Info : 30M x 0.32mm x 0.25µm

| Compound | RT#1 | RT#2 | Resp#1 | Resp#2 | ng/ml | ng/ml |
|-----------------------------|--------|-------|---------|---------|---------|----------|
| ----- | | | | | | |
| System Monitoring Compounds | | | | | | |
| 1) SA Tetrachlo... | 4.481 | 3.676 | 4818116 | 1979645 | 47.419 | 45.449 |
| 2) SA Decachlor... | 10.335 | 8.731 | 2749813 | 1583900 | 50.642 | 45.514 |
| Target Compounds | | | | | | |
| 3) L1 AR-1016-1 | 5.663 | 4.779 | 1659046 | 718883 | 519.120 | 460.303m |
| 4) L1 AR-1016-2 | 5.686 | 4.798 | 2330118 | 973392 | 524.159 | 464.854 |
| 5) L1 AR-1016-3 | 5.748 | 4.976 | 1472573 | 525283 | 537.056 | 475.212 |
| 6) L1 AR-1016-4 | 5.848 | 5.018 | 1218831 | 434551 | 549.877 | 471.378 |
| 7) L1 AR-1016-5 | 6.146 | 5.233 | 1158864 | 590566 | 559.276 | 523.017 |
| 31) L7 AR-1260-1 | 7.282 | 6.272 | 1778887 | 995766 | 587.787 | 511.615 |
| 32) L7 AR-1260-2 | 7.539 | 6.459 | 2030304 | 1194167 | 561.246 | 508.086 |
| 33) L7 AR-1260-3 | 7.902 | 6.614 | 1625693 | 1073438 | 589.019 | 499.211 |
| 34) L7 AR-1260-4 | 8.130 | 7.086 | 1899302 | 855236 | 562.926 | 474.964m |
| 35) L7 AR-1260-5 | 8.457 | 7.328 | 3238709 | 2073471 | 524.851 | 478.661 |
| ----- | | | | | | |

(f)=RT Delta > 1/2 Window (#)=Amounts differ by > 25% (m)=manual int.

Data Path : Z:\pestpcbsrv\HPCHEM1\ECD_O\Data\P0052122\
 Data File : P0086342.D
 Signal(s) : Signal #1: ECD1A.CH Signal #2: ECD2B.CH
 Acq On : 21 May 2022 22:18
 Operator : YP\AJ
 Sample : AR1660CCC500
 Misc :
 ALS Vial : 3 Sample Multiplier: 1

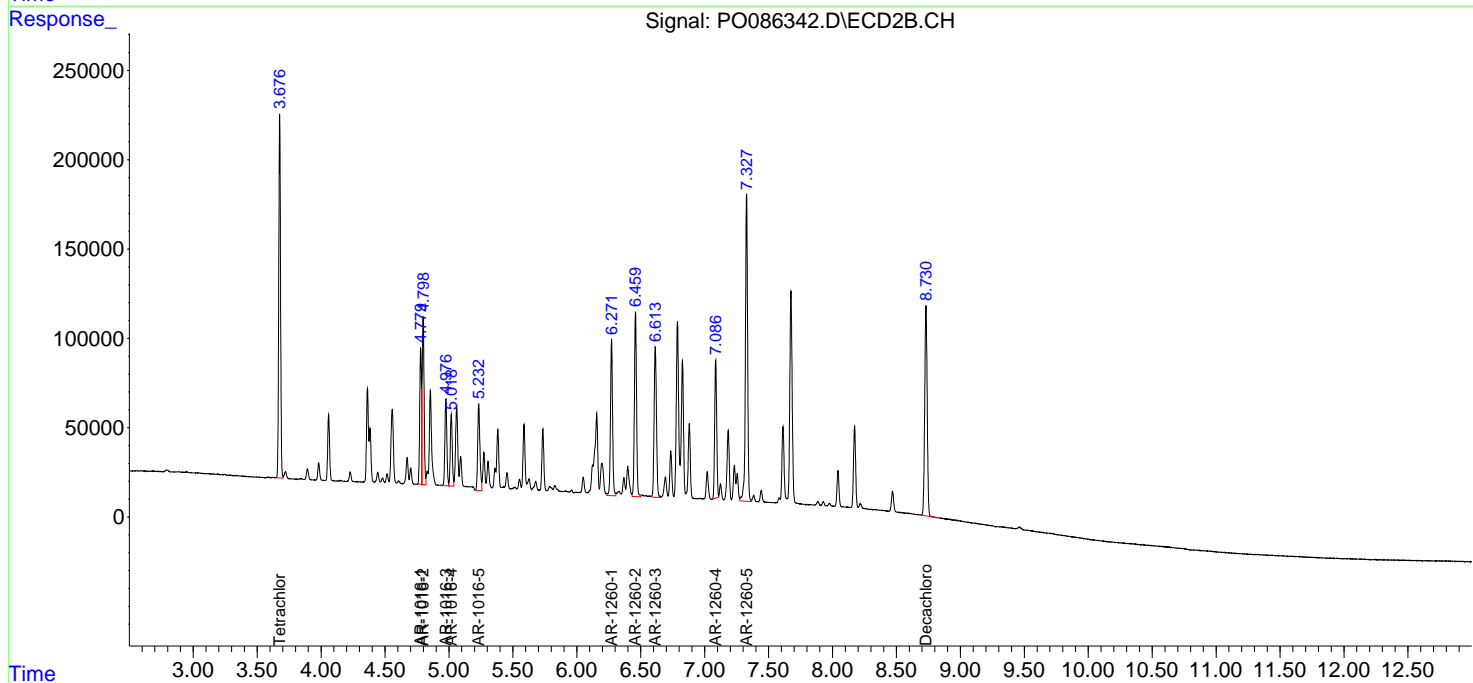
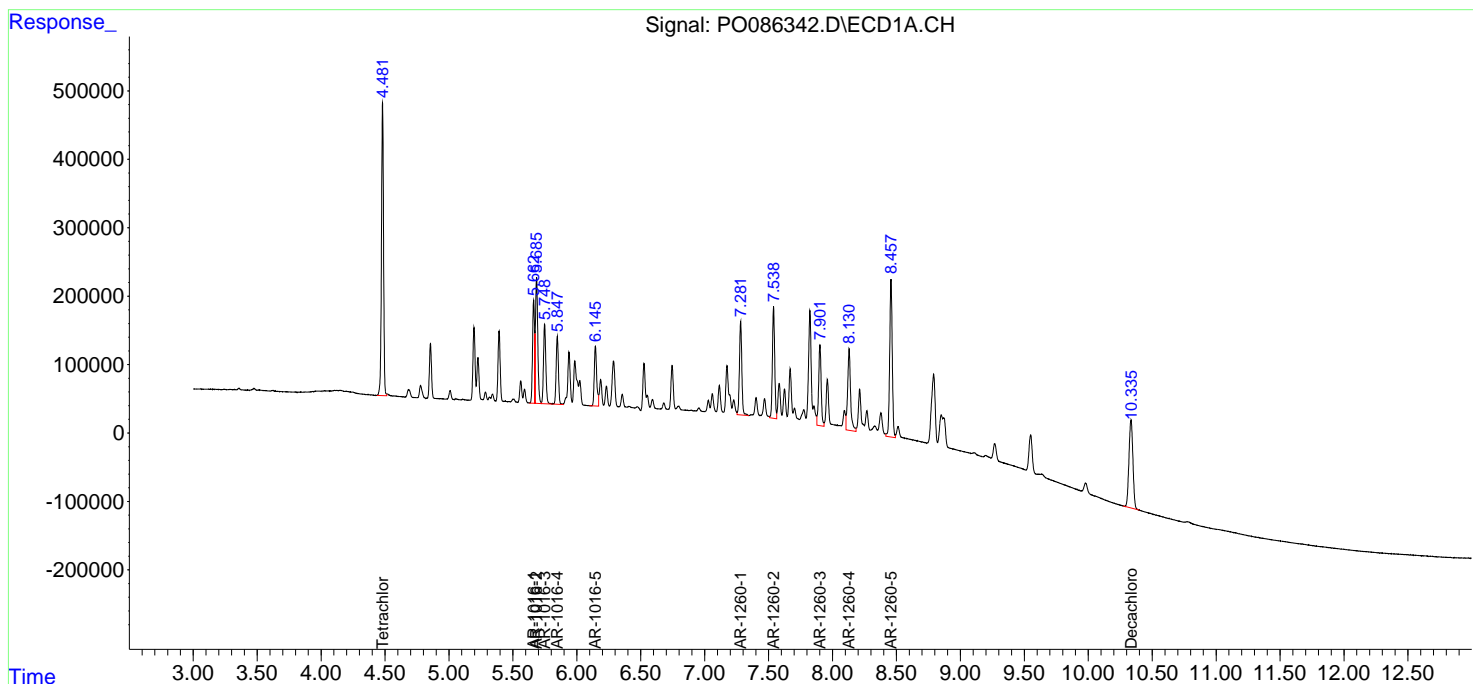
Instrument :
 ECD_O
 ClientSampleId :
 AR1660CCC500

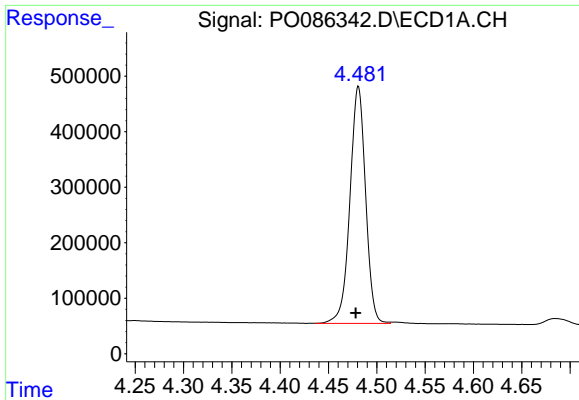
Manual Integrations
 APPROVED

Reviewed By :Yogesh Patel 05/23/2022
 Supervised By :Ankita Jodhani 05/23/2022

Integration File signal 1: autoint1.e
 Integration File signal 2: autoint2.e
 Quant Time: May 22 13:22:48 2022
 Quant Method : Z:\pestpcbsrv\HPCHEM1\ECD_O\methods\P0051122.M
 Quant Title : GC EXTRACTABLES
 QLast Update : Thu May 19 09:06:34 2022
 Response via : Initial Calibration
 Integrator: ChemStation 6890 Scale Mode: Small noise peaks clipped

Volume Inj. : 2 µl
 Signal #1 Phase : ZB-MR1 Signal #2 Phase: ZB-MR2
 Signal #1 Info : 30Mx0.32mmx 0.50µ Signal #2 Info : 30M x 0.32mm x 0.25µm





#1 Tetrachloro-m-xylene

R.T.: 4.481 min
 Delta R.T.: 0.003 min
 Response: 4818116
 Conc: 47.42 ng/ml

Instrument :

ECD_O

ClientSampleId :

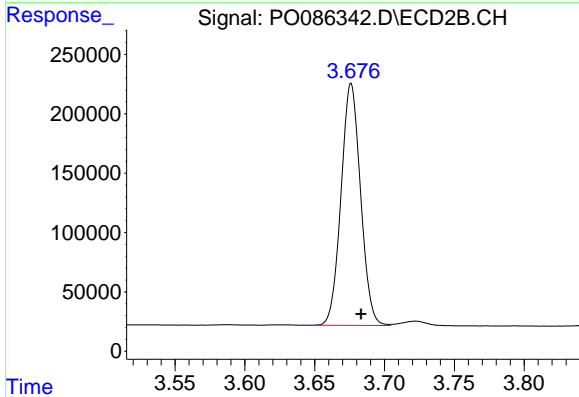
AR1660CCC500

Manual Integrations

APPROVED

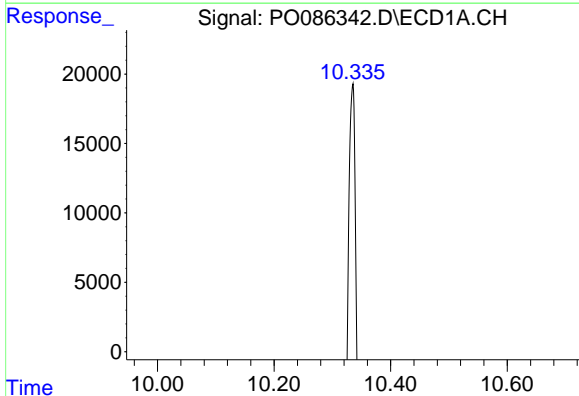
Reviewed By :Yogesh Patel 05/23/2022

Supervised By :Ankita Jodhani 05/23/2022



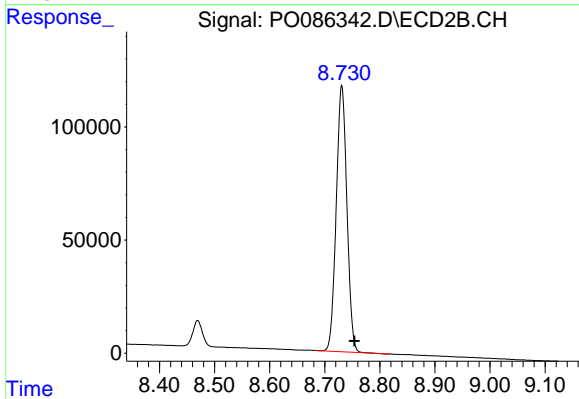
#1 Tetrachloro-m-xylene

R.T.: 3.676 min
 Delta R.T.: -0.007 min
 Response: 1979645
 Conc: 45.45 ng/ml



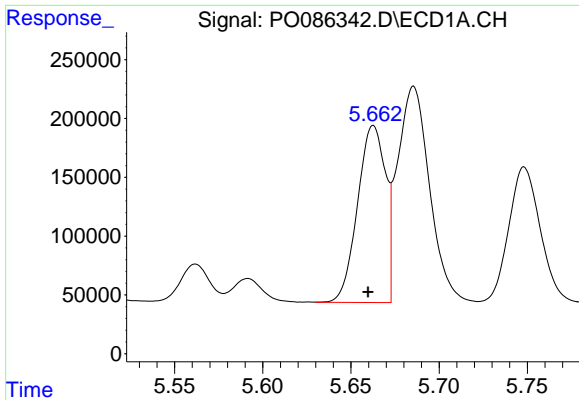
#2 Decachlorobiphenyl

R.T.: 10.335 min
 Delta R.T.: 0.010 min
 Response: 2749813
 Conc: 50.64 ng/ml



#2 Decachlorobiphenyl

R.T.: 8.731 min
 Delta R.T.: -0.023 min
 Response: 1583900
 Conc: 45.51 ng/ml



#3 AR-1016-1

R.T.: 5.663 min
 Delta R.T.: 0.003 min
 Response: 1659046
 Conc: 519.12 ng/ml

Instrument :

ECD_O

ClientSampleId :

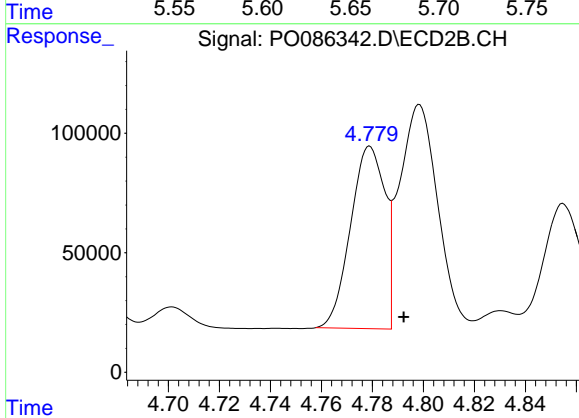
AR1660CCC500

Manual Integrations

APPROVED

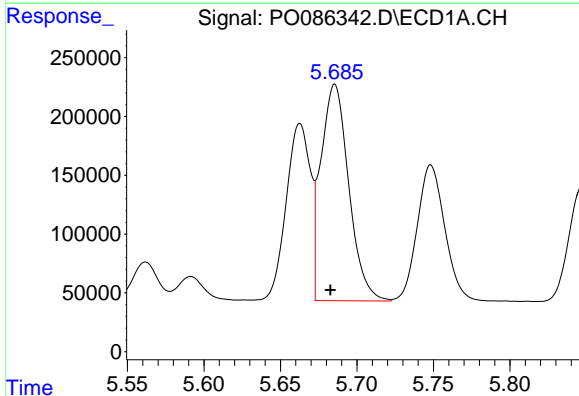
Reviewed By :Yogesh Patel 05/23/2022

Supervised By :Ankita Jodhani 05/23/2022



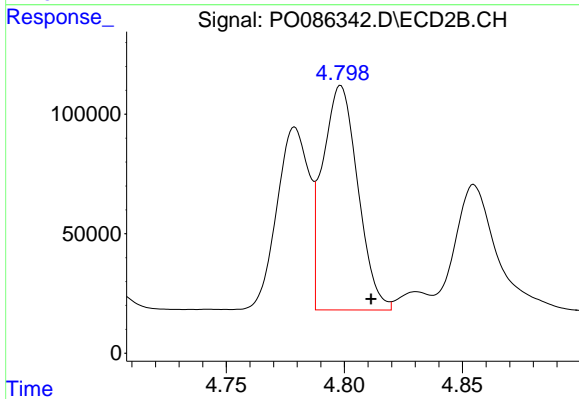
#3 AR-1016-1

R.T.: 4.779 min
 Delta R.T.: -0.014 min
 Response: 718883
 Conc: 460.30 ng/ml m



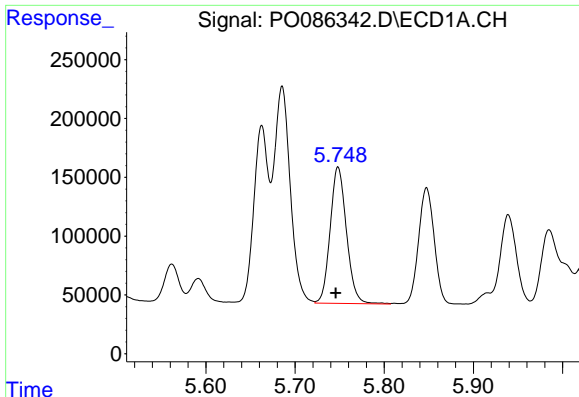
#4 AR-1016-2

R.T.: 5.686 min
 Delta R.T.: 0.003 min
 Response: 2330118
 Conc: 524.16 ng/ml



#4 AR-1016-2

R.T.: 4.798 min
 Delta R.T.: -0.013 min
 Response: 973392
 Conc: 464.85 ng/ml



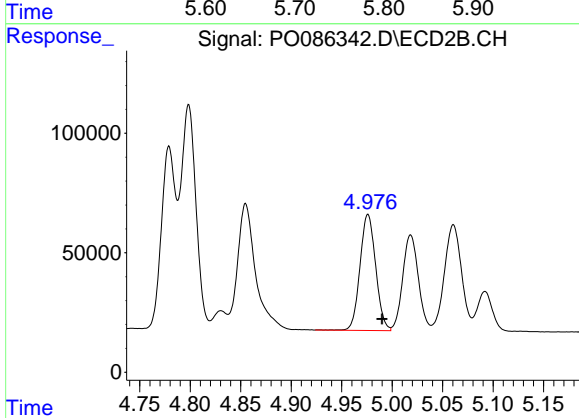
#5 AR-1016-3

R.T.: 5.748 min
Delta R.T.: 0.003 min
Response: 1472573
Conc: 537.06 ng/ml

Instrument :
ECD_O
ClientSampleId :
AR1660CCC500

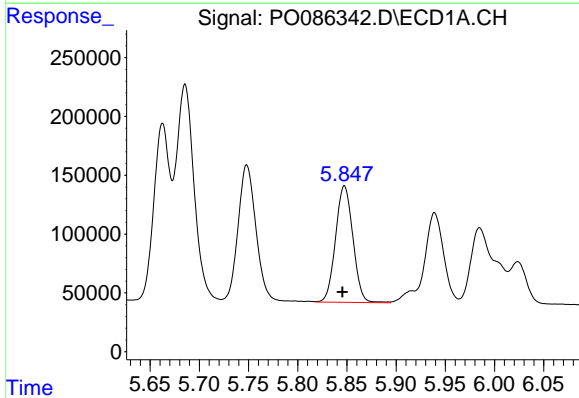
Manual Integrations
APPROVED

Reviewed By :Yogesh Patel 05/23/2022
Supervised By :Ankita Jodhani 05/23/2022



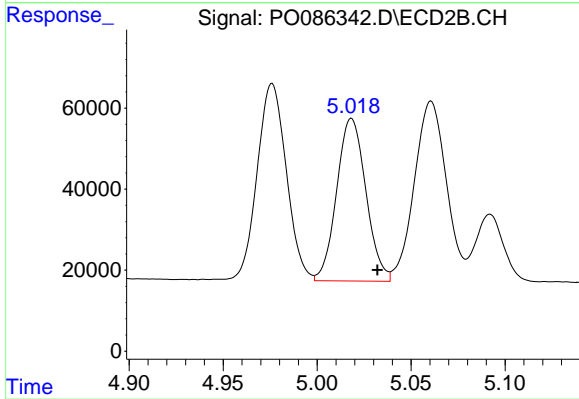
#5 AR-1016-3

R.T.: 4.976 min
Delta R.T.: -0.014 min
Response: 525283
Conc: 475.21 ng/ml



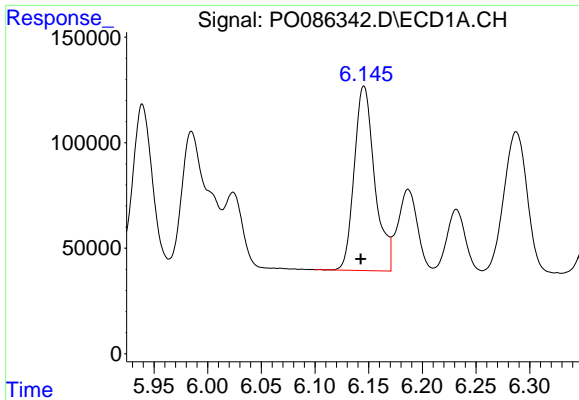
#6 AR-1016-4

R.T.: 5.848 min
Delta R.T.: 0.002 min
Response: 1218831
Conc: 549.88 ng/ml



#6 AR-1016-4

R.T.: 5.018 min
Delta R.T.: -0.014 min
Response: 434551
Conc: 471.38 ng/ml



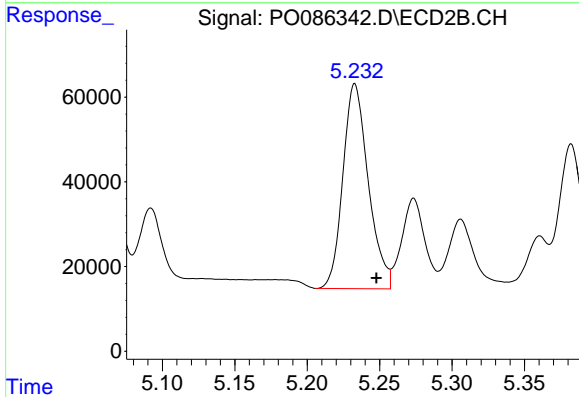
#7 AR-1016-5

R.T.: 6.146 min
 Delta R.T.: 0.003 min
 Response: 1158864
 Conc: 559.28 ng/ml

Instrument :
 ECD_O
 ClientSampleId :
 AR1660CCC500

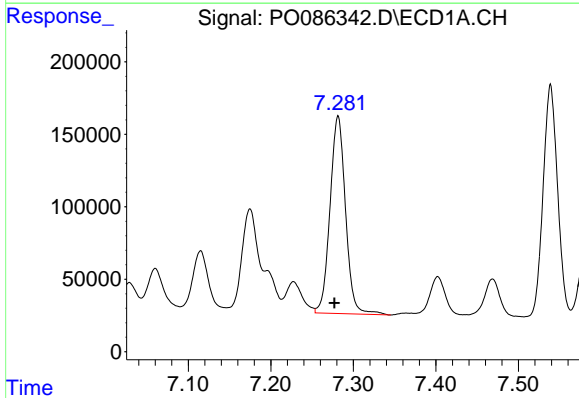
Manual Integrations
 APPROVED

Reviewed By :Yogesh Patel 05/23/2022
 Supervised By :Ankita Jodhani 05/23/2022



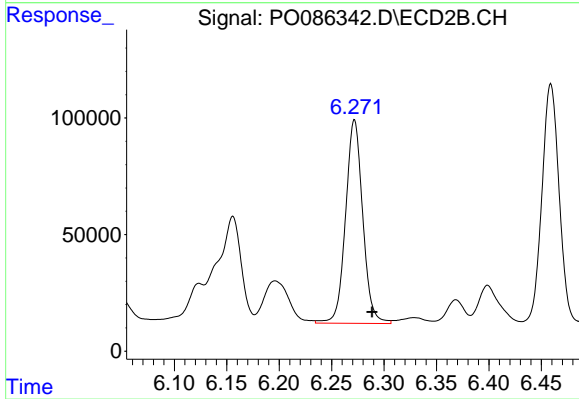
#7 AR-1016-5

R.T.: 5.233 min
 Delta R.T.: -0.015 min
 Response: 590566
 Conc: 523.02 ng/ml



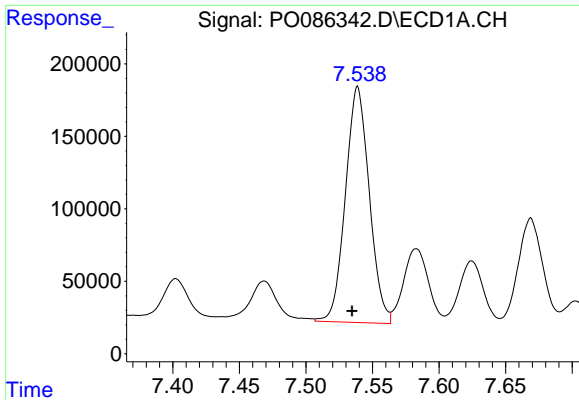
#31 AR-1260-1

R.T.: 7.282 min
 Delta R.T.: 0.005 min
 Response: 1778887
 Conc: 587.79 ng/ml



#31 AR-1260-1

R.T.: 6.272 min
 Delta R.T.: -0.017 min
 Response: 995766
 Conc: 511.61 ng/ml



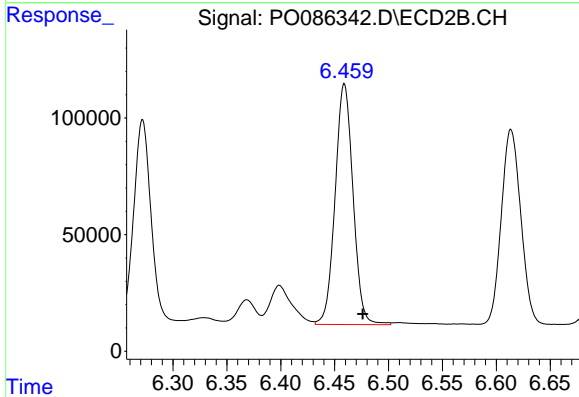
#32 AR-1260-2

R.T.: 7.539 min
 Delta R.T.: 0.004 min
 Response: 2030304
 Conc: 561.25 ng/ml

Instrument :
 ECD_O
 ClientSampleId :
 AR1660CCC500

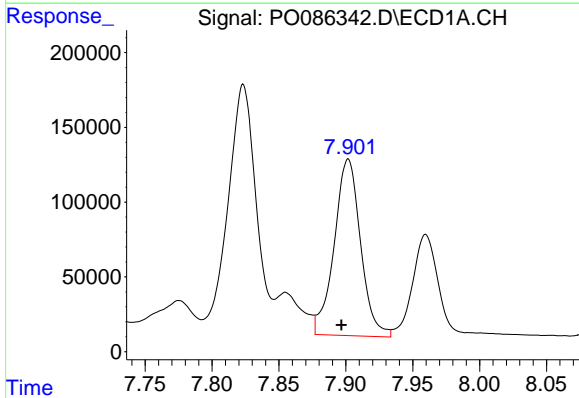
Manual Integrations
 APPROVED

Reviewed By :Yogesh Patel 05/23/2022
 Supervised By :Ankita Jodhani 05/23/2022



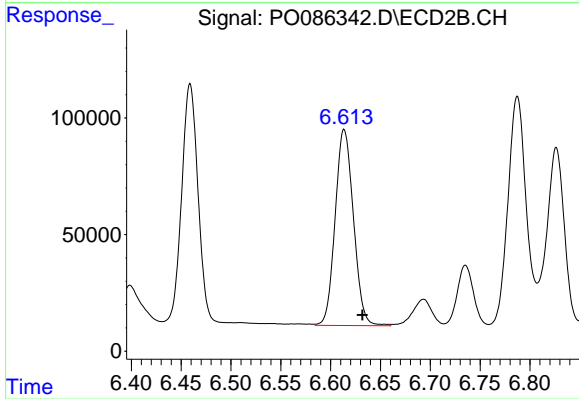
#32 AR-1260-2

R.T.: 6.459 min
 Delta R.T.: -0.017 min
 Response: 1194167
 Conc: 508.09 ng/ml



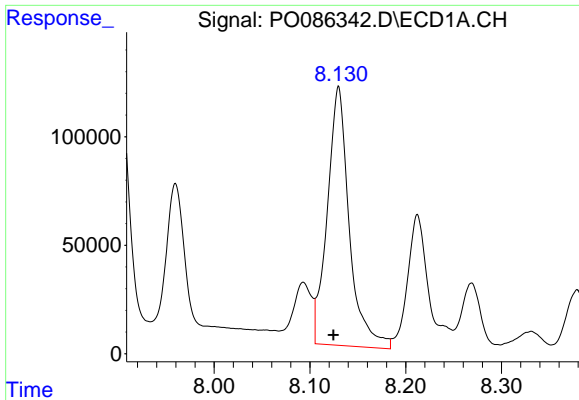
#33 AR-1260-3

R.T.: 7.902 min
 Delta R.T.: 0.005 min
 Response: 1625693
 Conc: 589.02 ng/ml



#33 AR-1260-3

R.T.: 6.614 min
 Delta R.T.: -0.018 min
 Response: 1073438
 Conc: 499.21 ng/ml



#34 AR-1260-4

R.T.: 8.130 min
 Delta R.T.: 0.005 min
 Response: 1899302
 Conc: 562.93 ng/ml

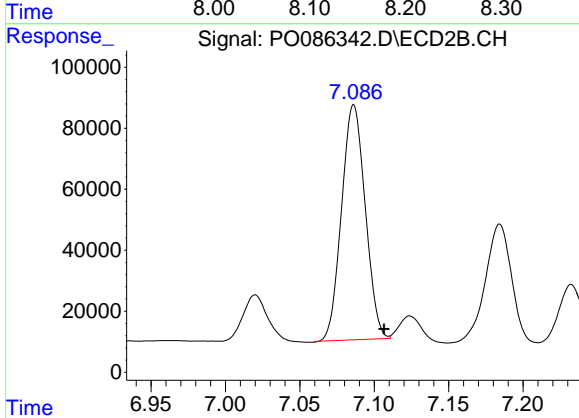
Instrument :

ECD_O

ClientSampleId :
 AR1660CCC500

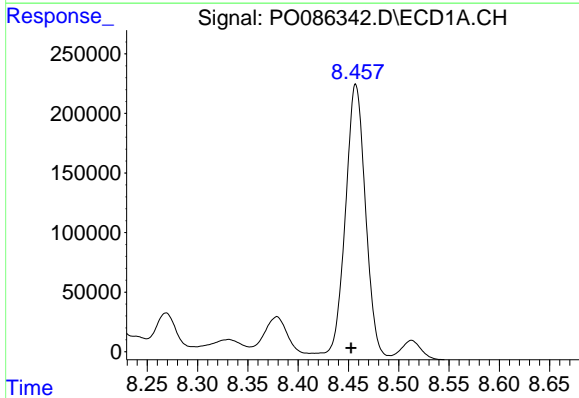
Manual Integrations
 APPROVED

Reviewed By :Yogesh Patel 05/23/2022
 Supervised By :Ankita Jodhani 05/23/2022



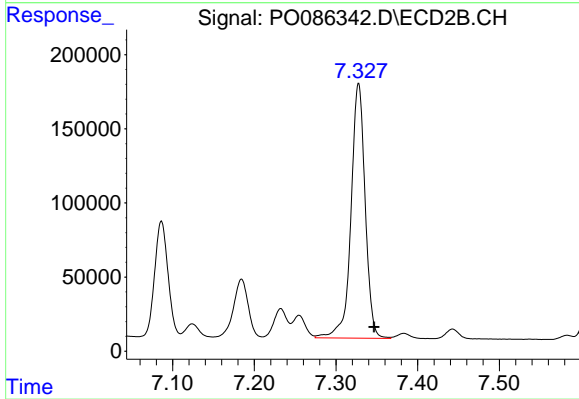
#34 AR-1260-4

R.T.: 7.086 min
 Delta R.T.: -0.021 min
 Response: 855236
 Conc: 474.96 ng/ml m



#35 AR-1260-5

R.T.: 8.457 min
 Delta R.T.: 0.005 min
 Response: 3238709
 Conc: 524.85 ng/ml



#35 AR-1260-5

R.T.: 7.328 min
 Delta R.T.: -0.019 min
 Response: 2073471
 Conc: 478.66 ng/ml