

Data Path : Z:\pestpcbsrv\HPCHEM1\ECD_0\Data\P0051215\
 Data File : PO111260.D
 Signal(s) : Signal #1: ECD1A.ch Signal #2: ECD2B.ch
 Acq On : 21 May 2025 18:32
 Operator : YP/AJ
 Sample : PB168102BS
 Misc :
 ALS Vial : 15 Sample Multiplier: 1

Instrument :
 ECD_0
 ClientSampleId :
 PB168102BL

Integration File signal 1: autoint1.e
 Integration File signal 2: autoint2.e
 Quant Time: May 22 02:26:36 2025
 Quant Method : Z:\pestpcbsrv\HPCHEM1\ECD_0\methods\P0051525.M
 Quant Title : GC EXTRACTABLES
 QLast Update : Thu May 15 07:11:53 2025
 Response via : Initial Calibration
 Integrator: ChemStation

Volume Inj. : 2 µl
 Signal #1 Phase : ZB-MR2 Signal #2 Phase: ZB-MR2
 Signal #1 Info : 30Mx0.32mmx 0.50µ Signal #2 Info : 30M x 0.32mm x 0.25µm

Compound	RT#1	RT#2	Resp#1	Resp#2	ng/ml	ng/ml

System Monitoring Compounds						
1) SA Tetrachlo...	3.680	3.677	128.2E6	107.2E6	21.790	19.656
2) SA Decachlor...	8.721	8.671	113.9E6	38411856	22.067	20.762
Target Compounds						
3) L1 AR-1016-1	4.777	4.758	1156941	204875	5.141	1.073 #
4) L1 AR-1016-2	4.777	4.766	1156941	459497	3.628	1.658 #
5) L1 AR-1016-3	4.849	4.957	273110	90943	1.258	0.623 #
6) L1 AR-1016-4	4.968	4.996	494035	181142	2.837	1.508 #
7) L1 AR-1016-5	5.228	5.196	375857	151812	2.136	0.983 #
8) L2 AR-1221-1	3.896	3.902	142671	186841	1.638	2.530 #
9) L2 AR-1221-2	3.981	3.975	3712606	1597295	58.279	29.354 #
10) L2 AR-1221-3	4.061	4.033	450344	200928	2.342	1.202 #
11) L3 AR-1232-1	4.061	4.033	450344	200928	2.940	1.539 #
12) L3 AR-1232-2	4.552	4.766	168681	459497	2.058	3.503 #
13) L3 AR-1232-3	4.777	4.957	1156941	90943	7.565	1.336 #
14) L3 AR-1232-4	4.968	5.034	494035	647156	6.006	10.493 #
15) L3 AR-1232-5	5.017	5.196	764088	151812	14.082	2.310 #
16) L4 AR-1242-1	4.777	4.758	1156941	204875	6.051	1.272 #
17) L4 AR-1242-2	4.777	4.766	1156941	459497	4.253	1.959 #
18) L4 AR-1242-3	4.849	4.957	273110	90943	1.468	0.736 #
19) L4 AR-1242-4	4.968	5.034	494035	647156	3.343	5.235 #
20) L4 AR-1242-5	5.654	5.564	47717	166256	0.307	1.094 #
21) L5 AR-1248-1	4.777	4.758	1156941	204875	7.554	1.579 #
22) L5 AR-1248-2	5.017	4.996	764088	181142	3.811	1.030 #
23) L5 AR-1248-3	5.228	5.034	375857	647156	1.468	3.449 #
24) L5 AR-1248-4	5.576	5.196	573508	151812	1.583	0.691 #
25) L5 AR-1248-5	5.654	5.603	47717	504173	0.182	2.309 #
26) L6 AR-1254-1	5.576	5.564	573508	166256	1.511	0.513 #
27) L6 AR-1254-2	5.729	5.695	343994	314498	1.053	1.110
28) L6 AR-1254-3	6.139	6.112	343108	285352	0.652	0.661
29) L6 AR-1254-4	6.368	6.331	245894	261665	0.732	1.058 #
30) L6 AR-1254-5	6.775	6.754	939880	353364	1.981	1.021 #
31) L7 AR-1260-1	6.233	6.238	587100	337033	1.925	1.349 #
32) L7 AR-1260-2	6.454	6.398	259403	634641	0.677	2.157 #
33) L7 AR-1260-3	6.815	6.575	444604	218179	1.275	0.761 #
34) L7 AR-1260-4	7.075	7.054	412357	116943	1.473	0.582 #
35) L7 AR-1260-5	7.317	7.284	740231	660273	1.028	1.437 #
36) L8 AR-1262-1	6.815	6.788	444604	187795	0.914	0.551 #
37) L8 AR-1262-2	7.317	7.284	740231	660273	0.916	1.313 #
38) L8 AR-1262-3	7.608	7.577	159600	109966	0.472	0.586
39) L8 AR-1262-4	7.663	7.631	29530	415019	0.050	1.257 #
40) L8 AR-1262-5	8.168	8.132	372383	47073	1.306	0.419 #
41) L9 AR-1268-1	7.608	7.577	159600	109966	0.165	0.207 #

Data Path : Z:\pestpcbsrv\HPCHEM1\ECD_0\Data\P0052125\
 Data File : P0111260.D
 Signal(s) : Signal #1: ECD1A.ch Signal #2: ECD2B.ch
 Acq On : 21 May 2025 18:32
 Operator : YP/AJ
 Sample : PB168102BS
 Misc :
 ALS Vial : 15 Sample Multiplier: 1

Instrument :
 ECD_0
 ClientSampleId :
 PB168102BL

Integration File signal 1: autoint1.e
 Integration File signal 2: autoint2.e
 Quant Time: May 22 02:26:36 2025
 Quant Method : Z:\pestpcbsrv\HPCHEM1\ECD_0\methods\P0051525.M
 Quant Title : GC EXTRACTABLES
 QLast Update : Thu May 15 07:11:53 2025
 Response via : Initial Calibration
 Integrator: ChemStation

Volume Inj. : 2 µl
 Signal #1 Phase : ZB-MR1 Signal #2 Phase: ZB-MR2
 Signal #1 Info : 30Mx0.32mmx 0.50µ Signal #2 Info : 30M x 0.32mm x 0.25µm

	Compound	RT#1	RT#2	Resp#1	Resp#2	ng/ml	ng/ml
42)	L9 AR-1268-2	7.663	7.631	29530	415019	0.033	0.860 #
43)	L9 AR-1268-3	7.879	7.840	371689	204038	0.490	0.586
44)	L9 AR-1268-4	8.168	8.132	372383	47073	1.140	0.370 #
45)	L9 AR-1268-5	8.463	8.419	981398	343148	0.455	0.456

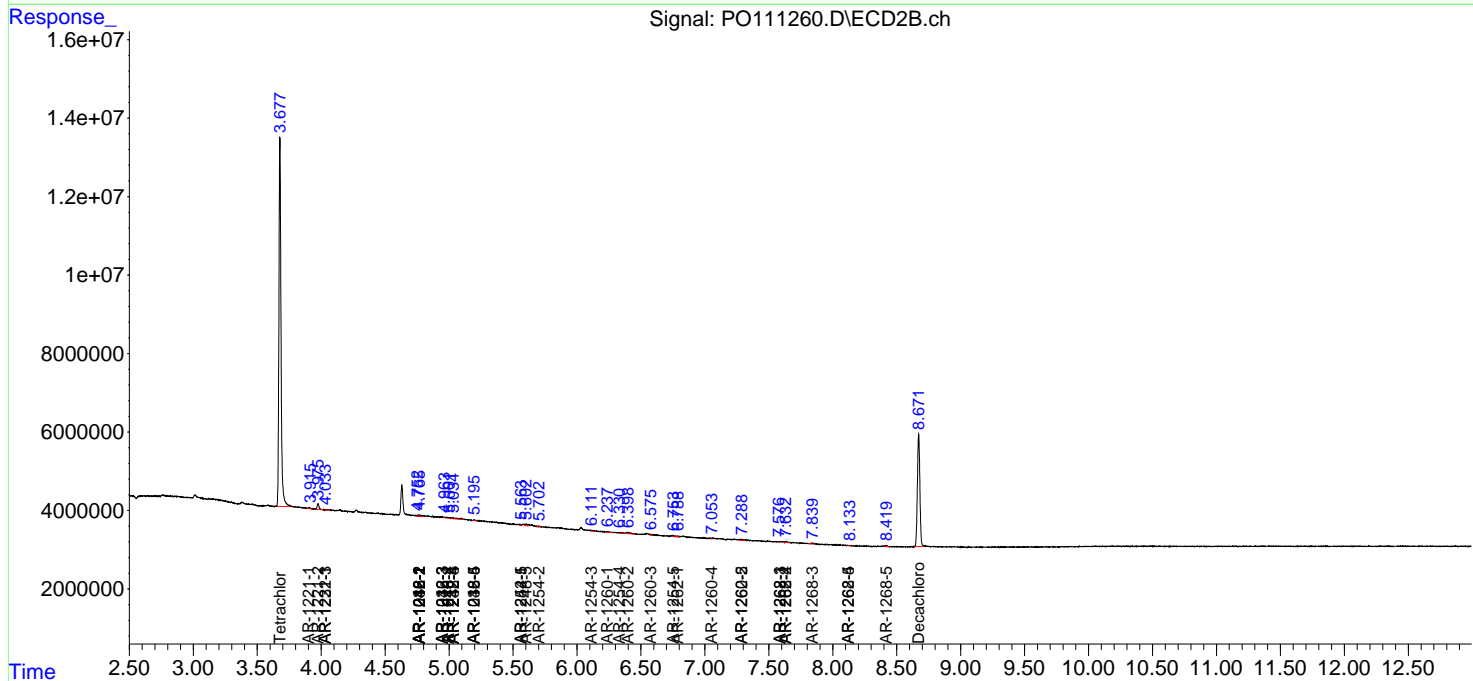
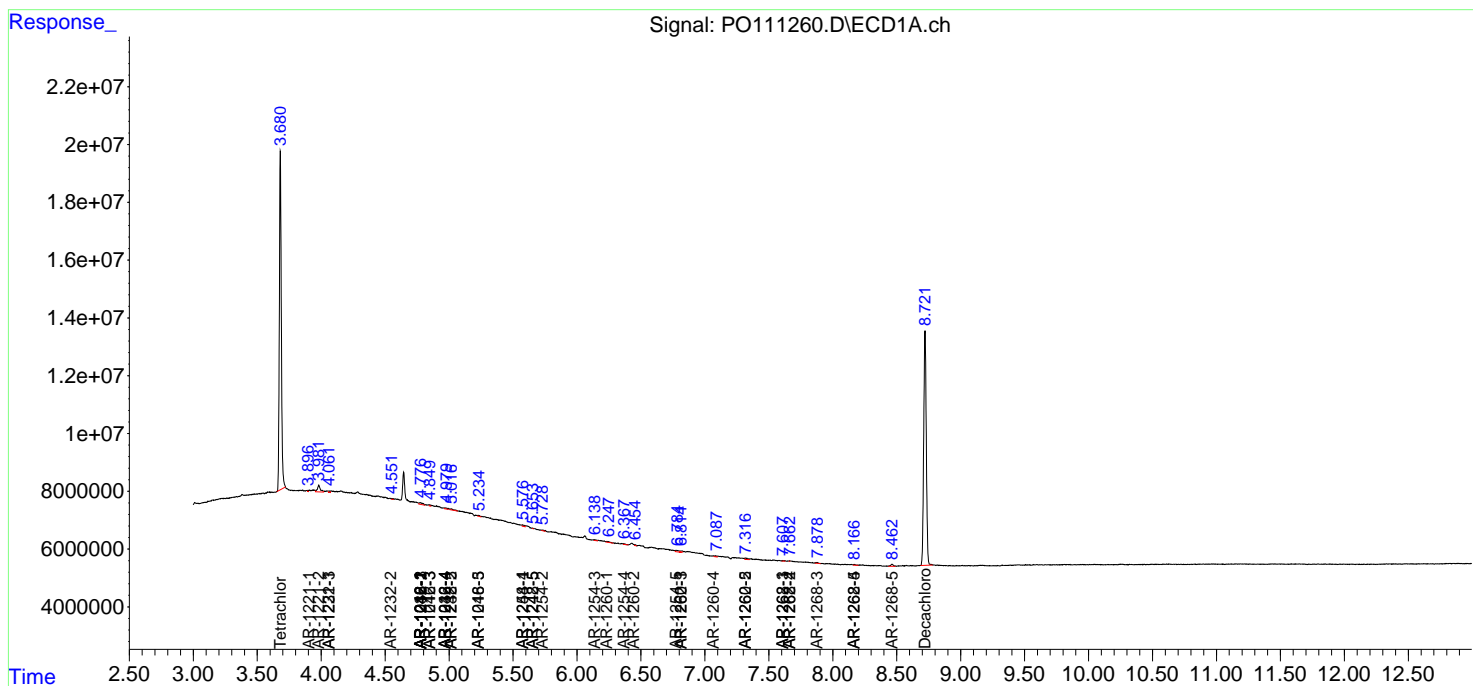
(f)=RT Delta > 1/2 Window (#)=Amounts differ by > 25% (m)=manual int.

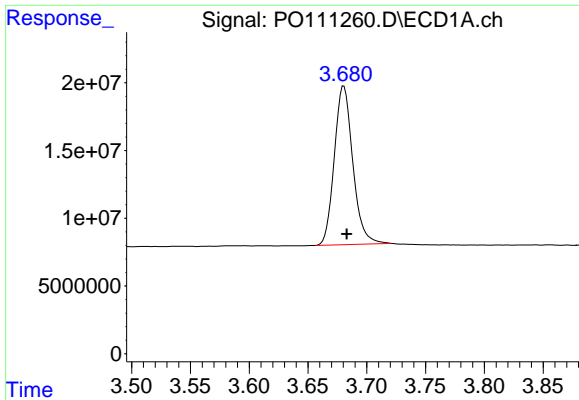
Data Path : Z:\pestpcbsrv\HPCHEM1\ECD_O\Data\PO052125\
 Data File : PO111260.D
 Signal(s) : Signal #1: ECD1A.ch Signal #2: ECD2B.ch
 Acq On : 21 May 2025 18:32
 Operator : YP/AJ
 Sample : PB168102BS
 Misc :
 ALS Vial : 15 Sample Multiplier: 1

Instrument :
 ECD_O
 ClientSampleId :
 PB168102BL

Integration File signal 1: autoint1.e
 Integration File signal 2: autoint2.e
 Quant Time: May 22 02:26:36 2025
 Quant Method : Z:\pestpcbsrv\HPCHEM1\ECD_O\methods\PO051525.M
 Quant Title : GC EXTRACTABLES
 QLast Update : Thu May 15 07:11:53 2025
 Response via : Initial Calibration
 Integrator: ChemStation

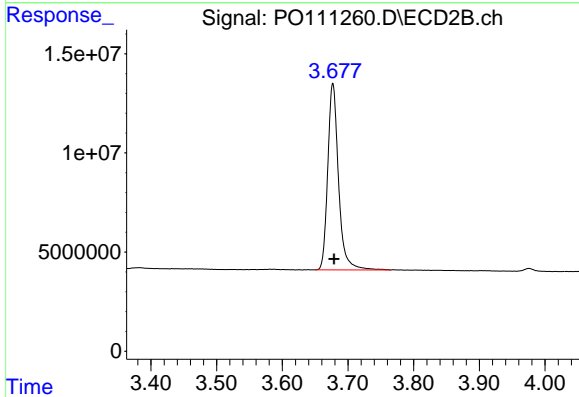
Volume Inj. : 2 µl
 Signal #1 Phase : ZB-MR1 Signal #2 Phase: ZB-MR2
 Signal #1 Info : 30Mx0.32mmx 0.50µ Signal #2 Info : 30M x 0.32mm x 0.25µm



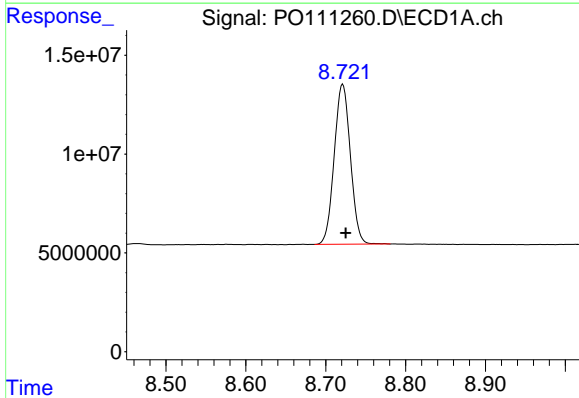


#1 Tetrachloro-m-xylene
 R.T.: 3.680 min
 Delta R.T.: -0.003 min
 Response: 128195663
 Conc: 21.79 ng/ml

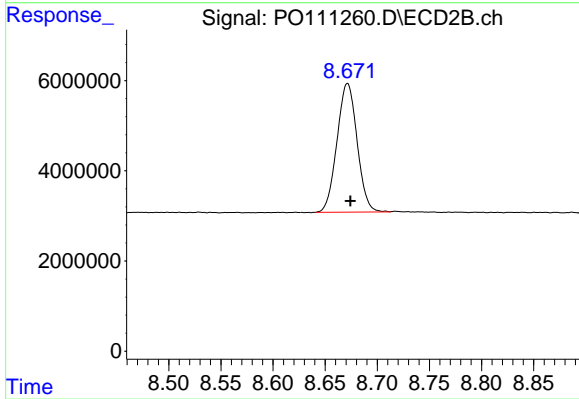
Instrument :
 ECD_O
 ClientSampleId :
 PB168102BL



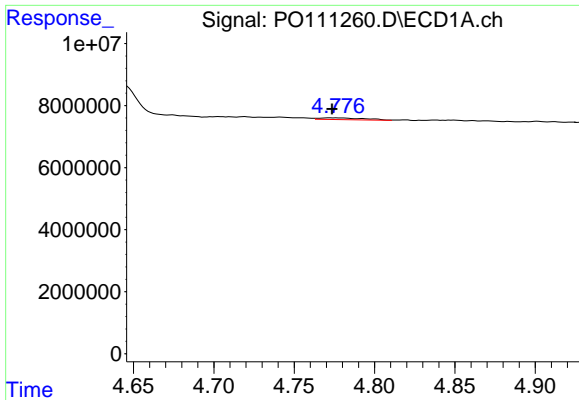
#1 Tetrachloro-m-xylene
 R.T.: 3.677 min
 Delta R.T.: -0.002 min
 Response: 107153804
 Conc: 19.66 ng/ml



#2 Decachlorobiphenyl
 R.T.: 8.721 min
 Delta R.T.: -0.004 min
 Response: 113931285
 Conc: 22.07 ng/ml



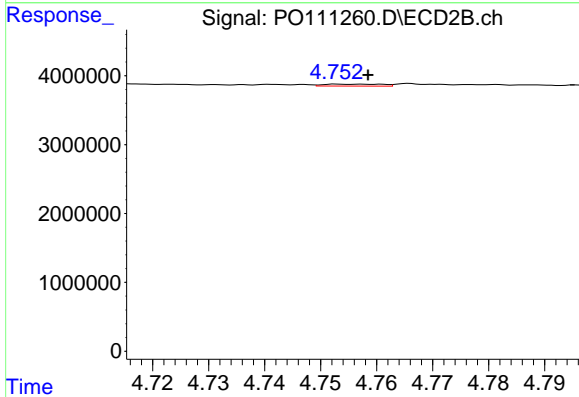
#2 Decachlorobiphenyl
 R.T.: 8.671 min
 Delta R.T.: -0.003 min
 Response: 38411856
 Conc: 20.76 ng/ml



#3 AR-1016-1

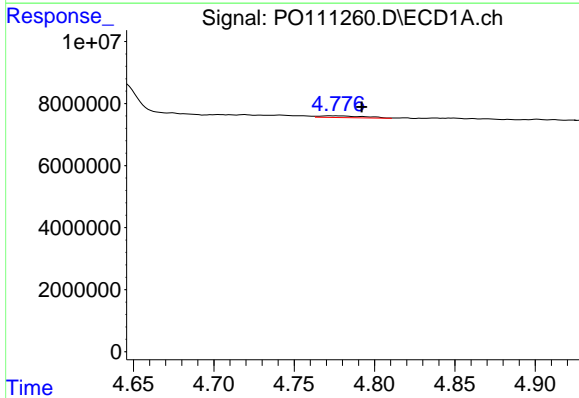
R.T.: 4.777 min
Delta R.T.: 0.003 min
Response: 1156941
Conc: 5.14 ng/ml

Instrument :
ECD_O
ClientSampleId :
PB168102BL



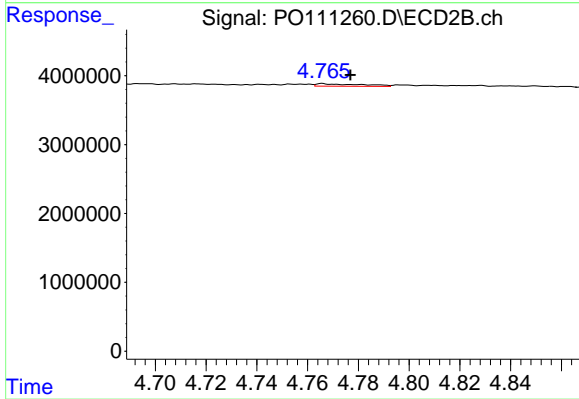
#3 AR-1016-1

R.T.: 4.758 min
Delta R.T.: 0.000 min
Response: 204875
Conc: 1.07 ng/ml



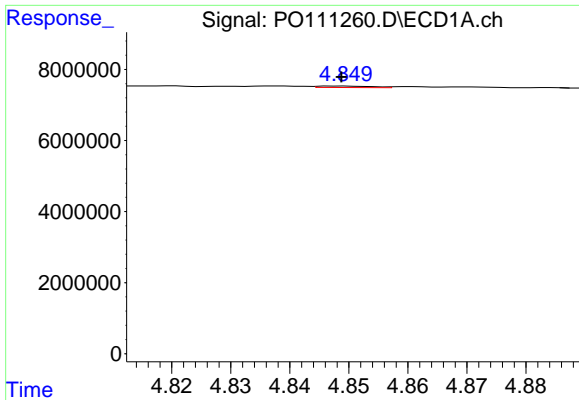
#4 AR-1016-2

R.T.: 4.777 min
Delta R.T.: -0.016 min
Response: 1156941
Conc: 3.63 ng/ml



#4 AR-1016-2

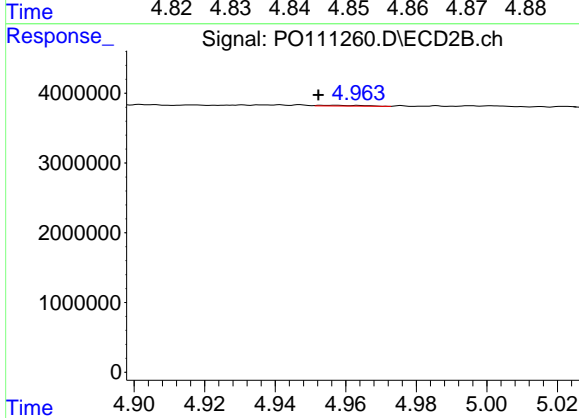
R.T.: 4.766 min
Delta R.T.: -0.011 min
Response: 459497
Conc: 1.66 ng/ml



#5 AR-1016-3

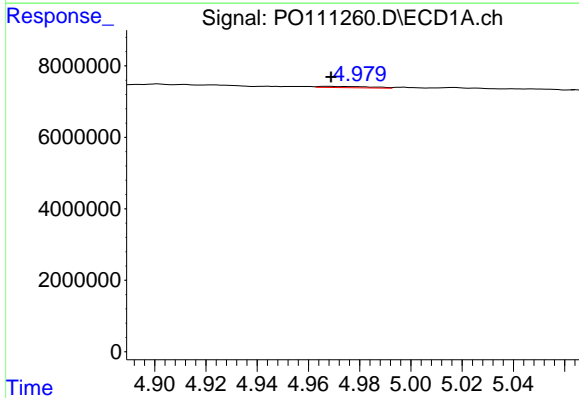
R.T.: 4.849 min
 Delta R.T.: 0.000 min
 Response: 273110
 Conc: 1.26 ng/ml

Instrument :
 ECD_O
 ClientSampleId :
 PB168102BL



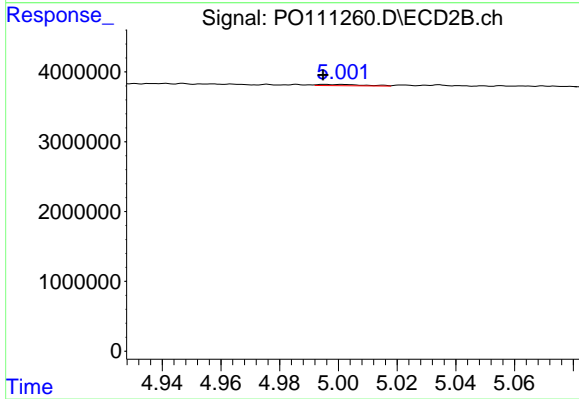
#5 AR-1016-3

R.T.: 4.957 min
 Delta R.T.: 0.004 min
 Response: 90943
 Conc: 0.62 ng/ml



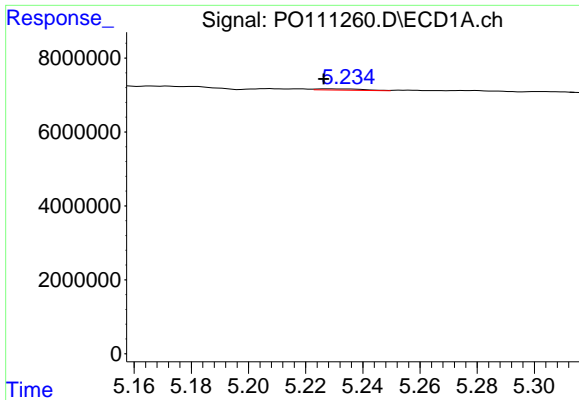
#6 AR-1016-4

R.T.: 4.968 min
 Delta R.T.: -0.001 min
 Response: 494035
 Conc: 2.84 ng/ml



#6 AR-1016-4

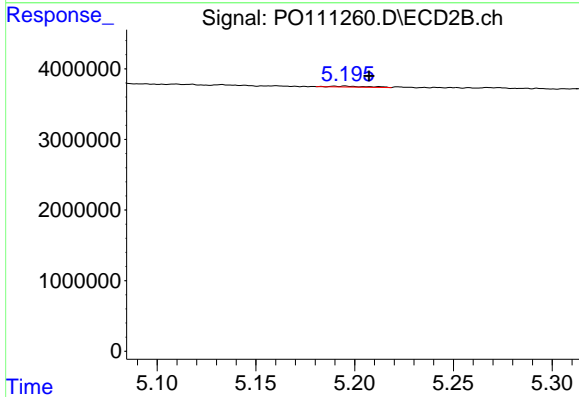
R.T.: 4.996 min
 Delta R.T.: 0.000 min
 Response: 181142
 Conc: 1.51 ng/ml



#7 AR-1016-5

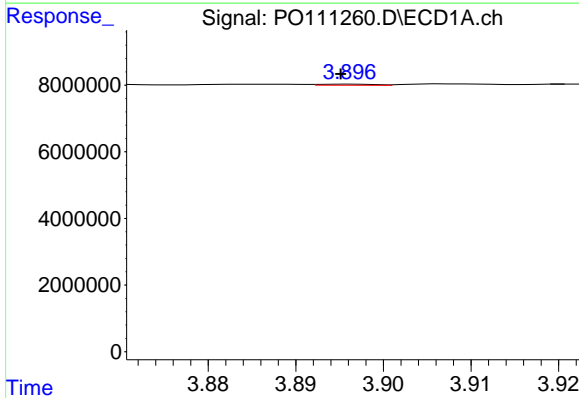
R.T.: 5.228 min
 Delta R.T.: 0.002 min
 Response: 375857
 Conc: 2.14 ng/ml

Instrument :
 ECD_O
 ClientSampleId :
 PB168102BL



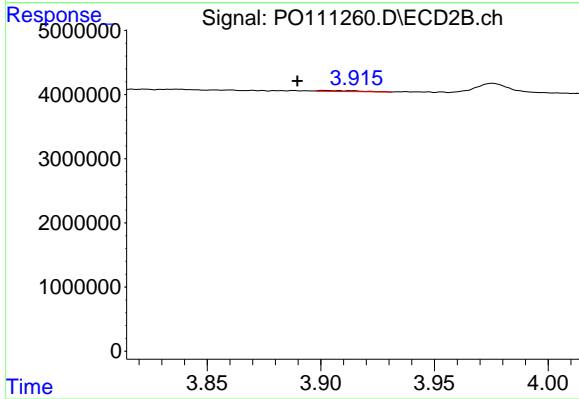
#7 AR-1016-5

R.T.: 5.196 min
 Delta R.T.: -0.012 min
 Response: 151812
 Conc: 0.98 ng/ml



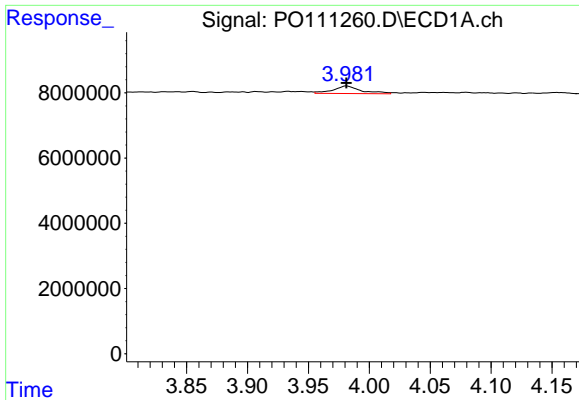
#8 AR-1221-1

R.T.: 3.896 min
 Delta R.T.: 0.001 min
 Response: 142671
 Conc: 1.64 ng/ml



#8 AR-1221-1

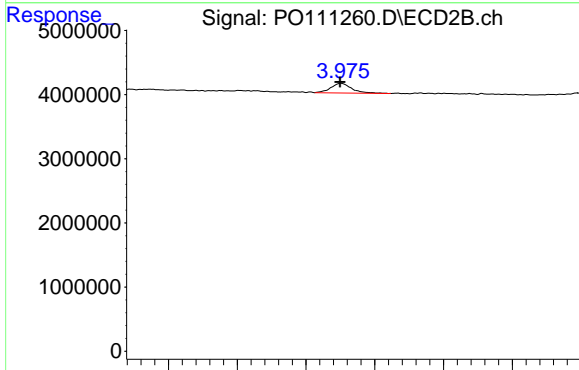
R.T.: 3.902 min
 Delta R.T.: 0.012 min
 Response: 186841
 Conc: 2.53 ng/ml



#9 AR-1221-2

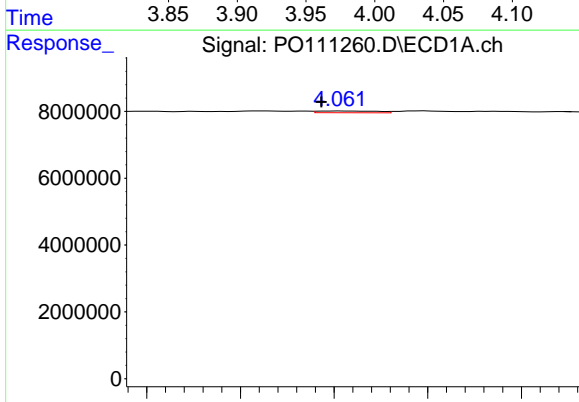
R.T.: 3.981 min
 Delta R.T.: 0.000 min
 Response: 3712606
 Conc: 58.28 ng/ml

Instrument :
 ECD_O
 ClientSampleId :
 PB168102BL



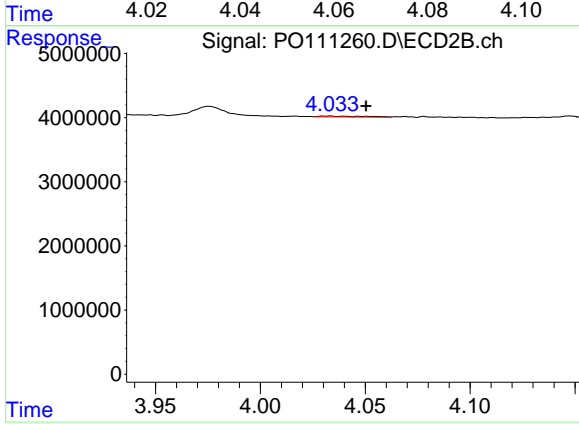
#9 AR-1221-2

R.T.: 3.975 min
 Delta R.T.: 0.000 min
 Response: 1597295
 Conc: 29.35 ng/ml



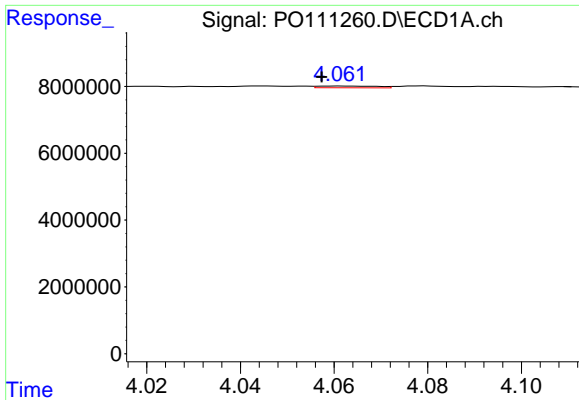
#10 AR-1221-3

R.T.: 4.061 min
 Delta R.T.: 0.004 min
 Response: 450344
 Conc: 2.34 ng/ml



#10 AR-1221-3

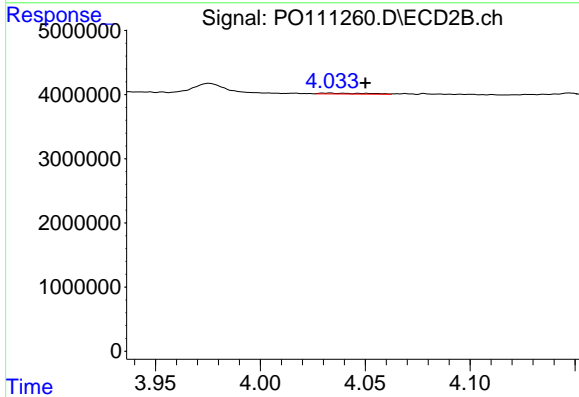
R.T.: 4.033 min
 Delta R.T.: -0.017 min
 Response: 200928
 Conc: 1.20 ng/ml



#11 AR-1232-1

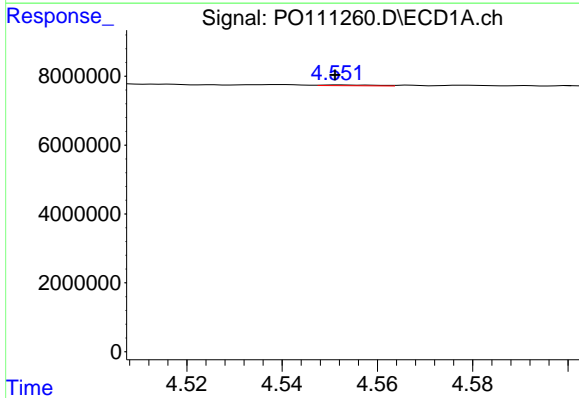
R.T.: 4.061 min
 Delta R.T.: 0.004 min
 Response: 450344
 Conc: 2.94 ng/ml

Instrument :
 ECD_O
 ClientSampleId :
 PB168102BL



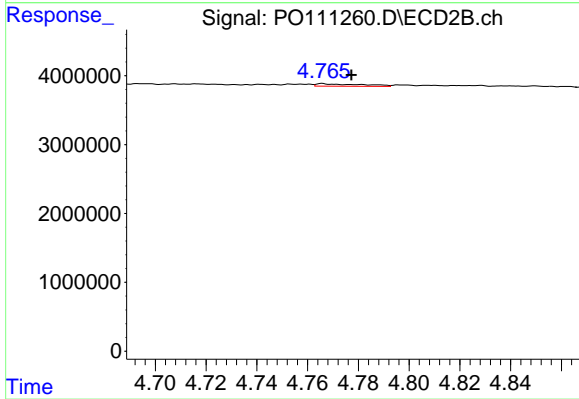
#11 AR-1232-1

R.T.: 4.033 min
 Delta R.T.: -0.017 min
 Response: 200928
 Conc: 1.54 ng/ml



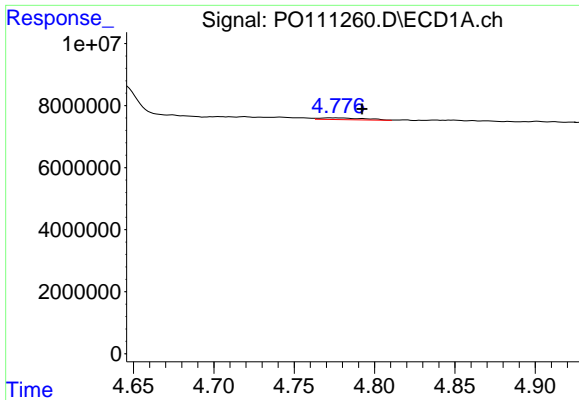
#12 AR-1232-2

R.T.: 4.552 min
 Delta R.T.: 0.001 min
 Response: 168681
 Conc: 2.06 ng/ml



#12 AR-1232-2

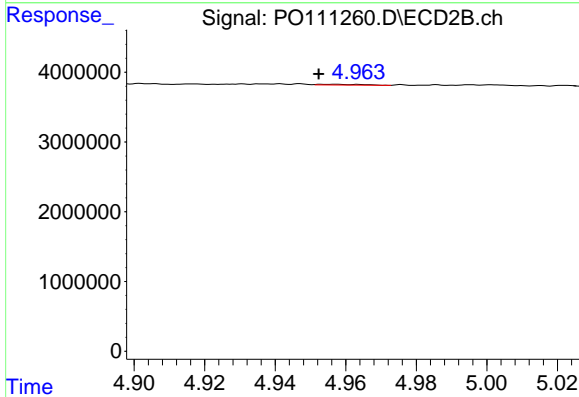
R.T.: 4.766 min
 Delta R.T.: -0.011 min
 Response: 459497
 Conc: 3.50 ng/ml



#13 AR-1232-3

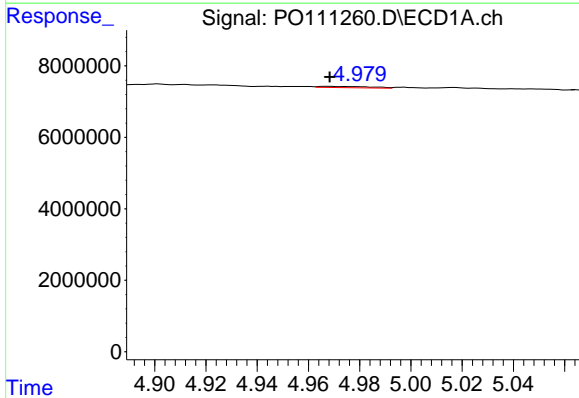
R.T.: 4.777 min
 Delta R.T.: -0.016 min
 Response: 1156941
 Conc: 7.57 ng/ml

Instrument :
 ECD_O
 ClientSampleId :
 PB168102BL



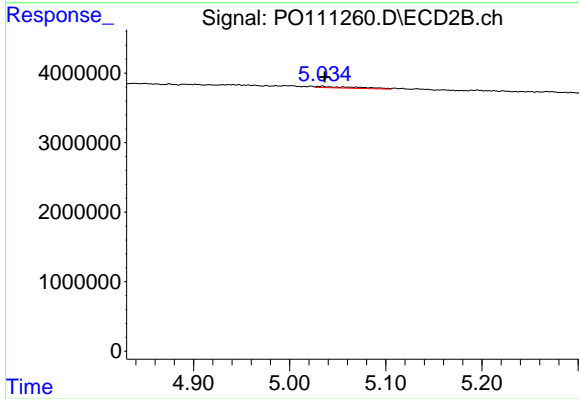
#13 AR-1232-3

R.T.: 4.957 min
 Delta R.T.: 0.004 min
 Response: 90943
 Conc: 1.34 ng/ml



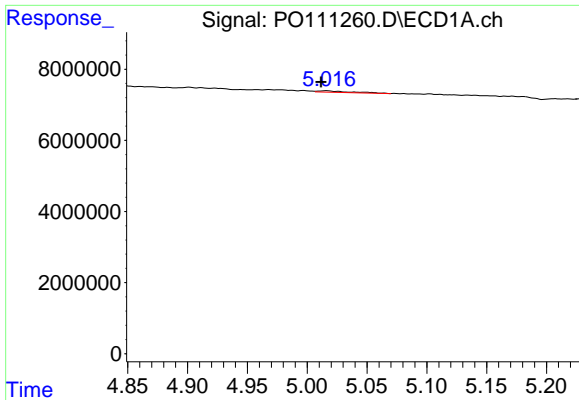
#14 AR-1232-4

R.T.: 4.968 min
 Delta R.T.: 0.000 min
 Response: 494035
 Conc: 6.01 ng/ml



#14 AR-1232-4

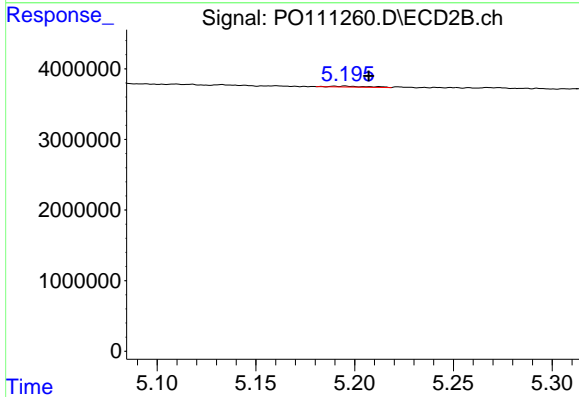
R.T.: 5.034 min
 Delta R.T.: -0.002 min
 Response: 647156
 Conc: 10.49 ng/ml



#15 AR-1232-5

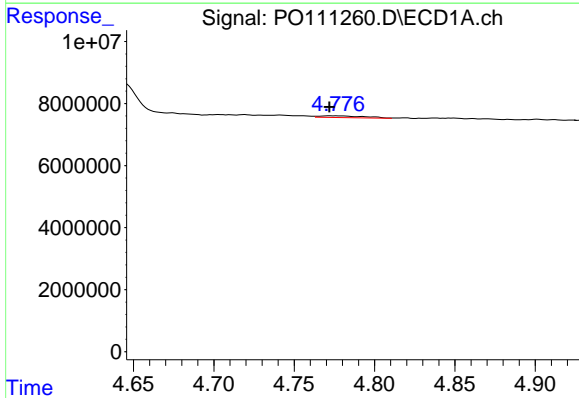
R.T.: 5.017 min
 Delta R.T.: 0.005 min
 Response: 764088
 Conc: 14.08 ng/ml

Instrument :
 ECD_O
 ClientSampleId :
 PB168102BL



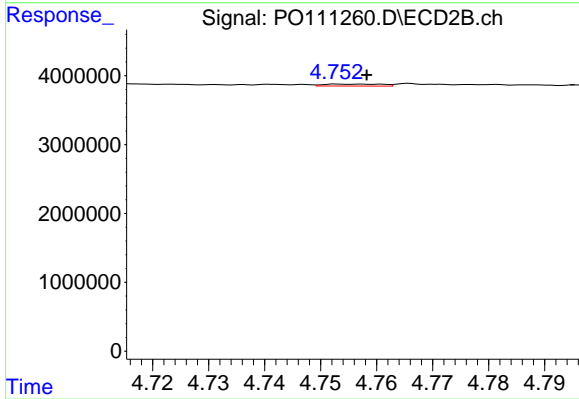
#15 AR-1232-5

R.T.: 5.196 min
 Delta R.T.: -0.012 min
 Response: 151812
 Conc: 2.31 ng/ml



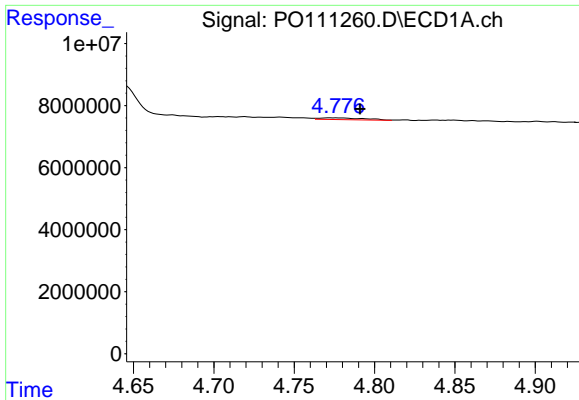
#16 AR-1242-1

R.T.: 4.777 min
 Delta R.T.: 0.005 min
 Response: 1156941
 Conc: 6.05 ng/ml



#16 AR-1242-1

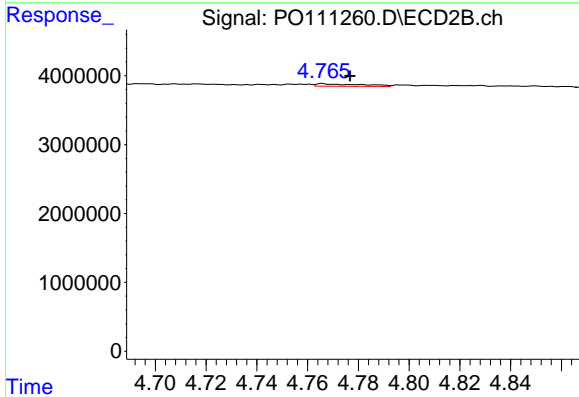
R.T.: 4.758 min
 Delta R.T.: 0.000 min
 Response: 204875
 Conc: 1.27 ng/ml



#17 AR-1242-2

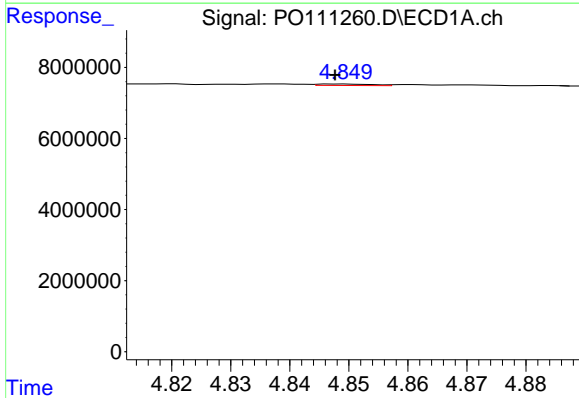
R.T.: 4.777 min
 Delta R.T.: -0.014 min
 Response: 1156941
 Conc: 4.25 ng/ml

Instrument :
 ECD_O
 ClientSampleId :
 PB168102BL



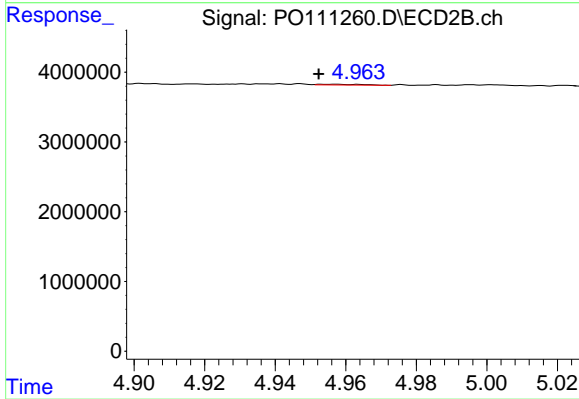
#17 AR-1242-2

R.T.: 4.766 min
 Delta R.T.: -0.011 min
 Response: 459497
 Conc: 1.96 ng/ml



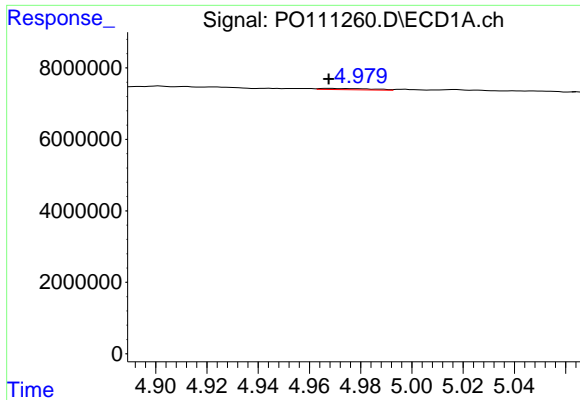
#18 AR-1242-3

R.T.: 4.849 min
 Delta R.T.: 0.000 min
 Response: 273110
 Conc: 1.47 ng/ml



#18 AR-1242-3

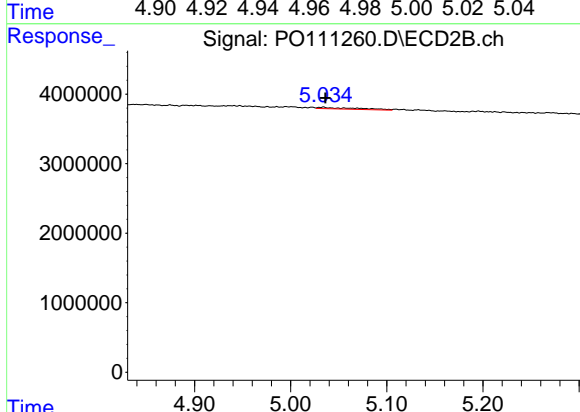
R.T.: 4.957 min
 Delta R.T.: 0.004 min
 Response: 90943
 Conc: 0.74 ng/ml



#19 AR-1242-4

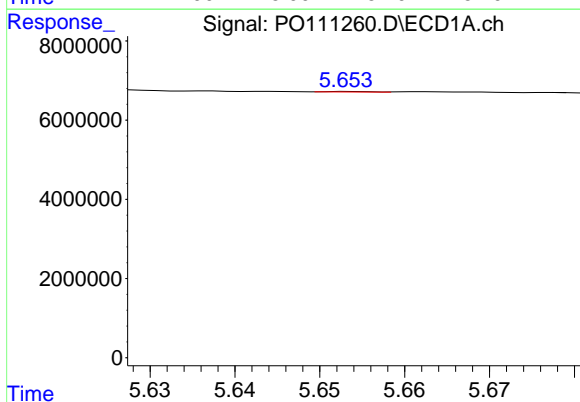
R.T.: 4.968 min
 Delta R.T.: 0.000 min
 Response: 494035
 Conc: 3.34 ng/ml

Instrument :
 ECD_O
 ClientSampleId :
 PB168102BL



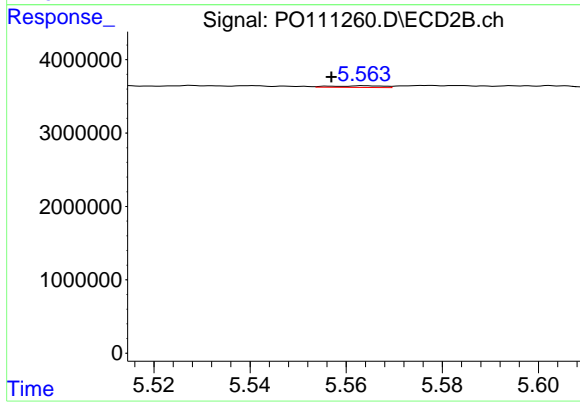
#19 AR-1242-4

R.T.: 5.034 min
 Delta R.T.: -0.002 min
 Response: 647156
 Conc: 5.24 ng/ml



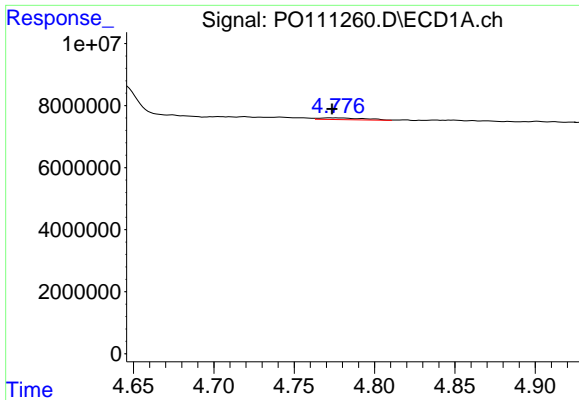
#20 AR-1242-5

R.T.: 5.654 min
 Delta R.T.: 0.033 min
 Response: 47717
 Conc: 0.31 ng/ml



#20 AR-1242-5

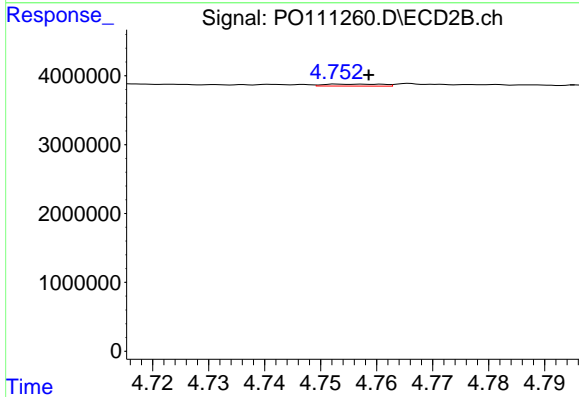
R.T.: 5.564 min
 Delta R.T.: 0.007 min
 Response: 166256
 Conc: 1.09 ng/ml



#21 AR-1248-1

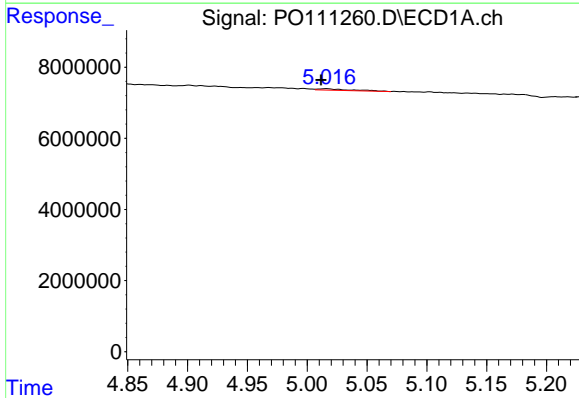
R.T.: 4.777 min
 Delta R.T.: 0.003 min
 Response: 1156941
 Conc: 7.55 ng/ml

Instrument :
 ECD_O
 ClientSampleId :
 PB168102BL



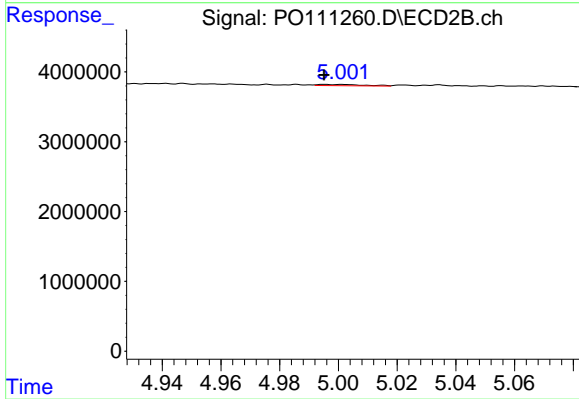
#21 AR-1248-1

R.T.: 4.758 min
 Delta R.T.: -0.001 min
 Response: 204875
 Conc: 1.58 ng/ml



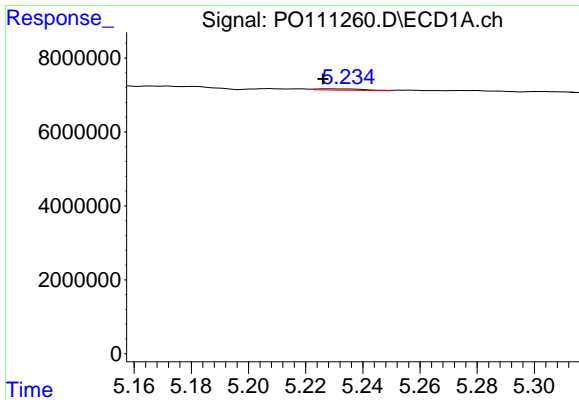
#22 AR-1248-2

R.T.: 5.017 min
 Delta R.T.: 0.005 min
 Response: 764088
 Conc: 3.81 ng/ml



#22 AR-1248-2

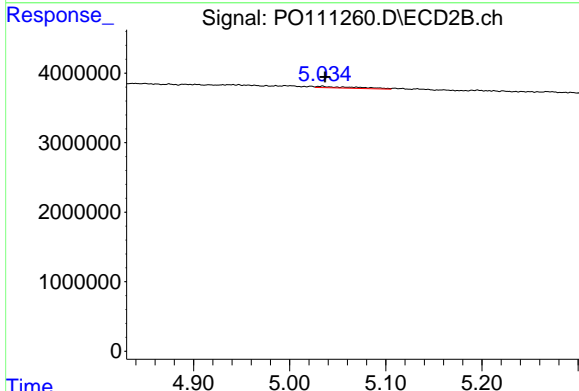
R.T.: 4.996 min
 Delta R.T.: 0.000 min
 Response: 181142
 Conc: 1.03 ng/ml



#23 AR-1248-3

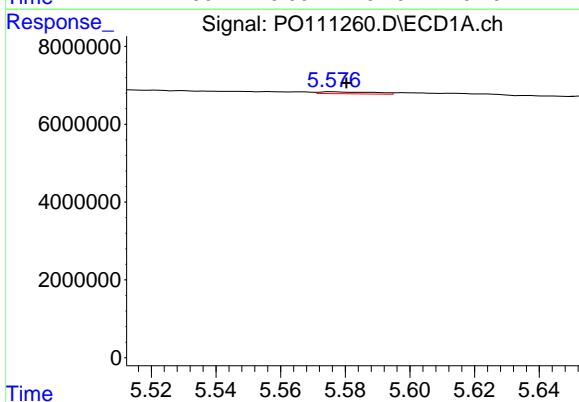
R.T.: 5.228 min
 Delta R.T.: 0.002 min
 Response: 375857
 Conc: 1.47 ng/ml

Instrument :
 ECD_O
 ClientSampleId :
 PB168102BL



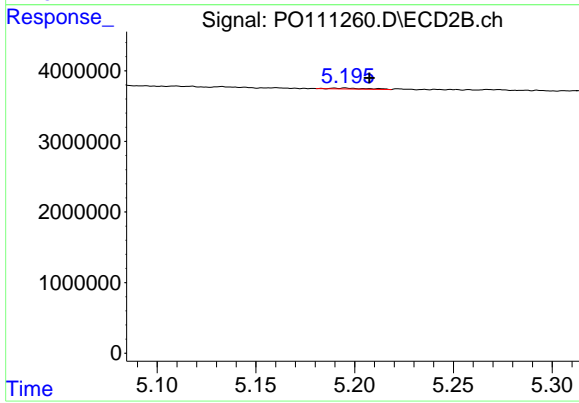
#23 AR-1248-3

R.T.: 5.034 min
 Delta R.T.: -0.003 min
 Response: 647156
 Conc: 3.45 ng/ml



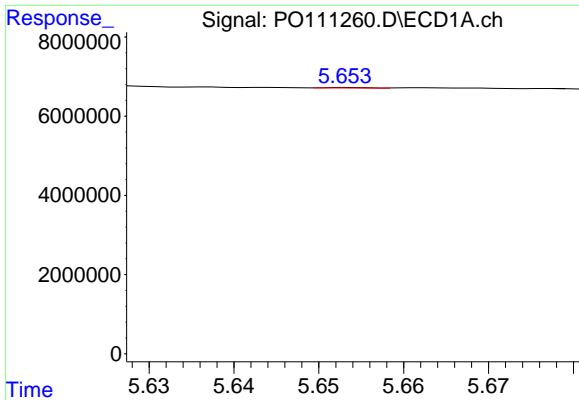
#24 AR-1248-4

R.T.: 5.576 min
 Delta R.T.: -0.004 min
 Response: 573508
 Conc: 1.58 ng/ml



#24 AR-1248-4

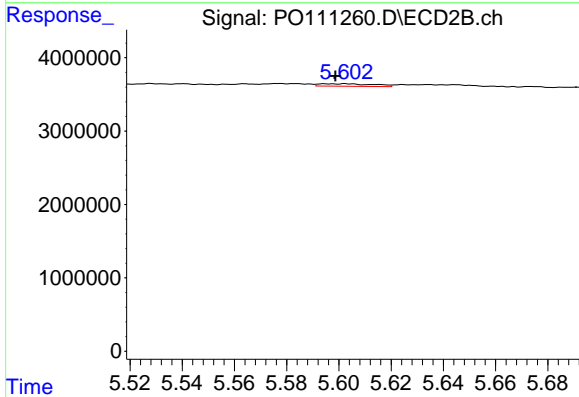
R.T.: 5.196 min
 Delta R.T.: -0.012 min
 Response: 151812
 Conc: 0.69 ng/ml



#25 AR-1248-5

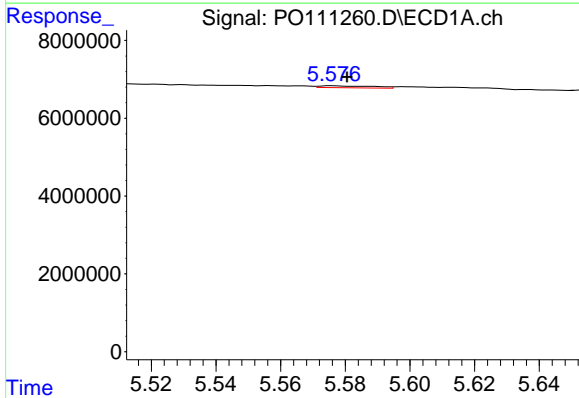
R.T.: 5.654 min
 Delta R.T.: 0.032 min
 Response: 47717
 Conc: 0.18 ng/ml

Instrument :
 ECD_O
 ClientSampleId :
 PB168102BL



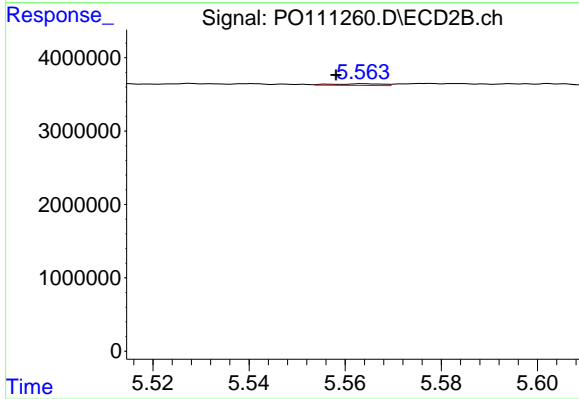
#25 AR-1248-5

R.T.: 5.603 min
 Delta R.T.: 0.004 min
 Response: 504173
 Conc: 2.31 ng/ml



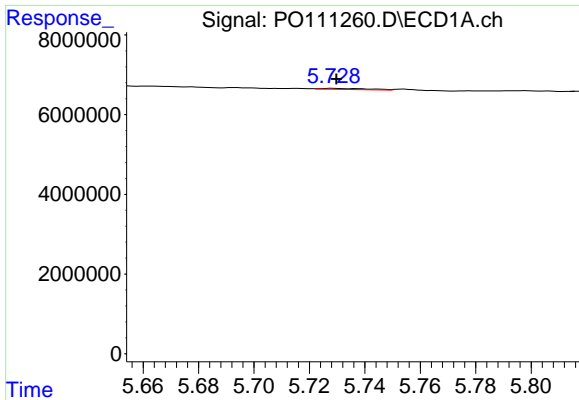
#26 AR-1254-1

R.T.: 5.576 min
 Delta R.T.: -0.004 min
 Response: 573508
 Conc: 1.51 ng/ml



#26 AR-1254-1

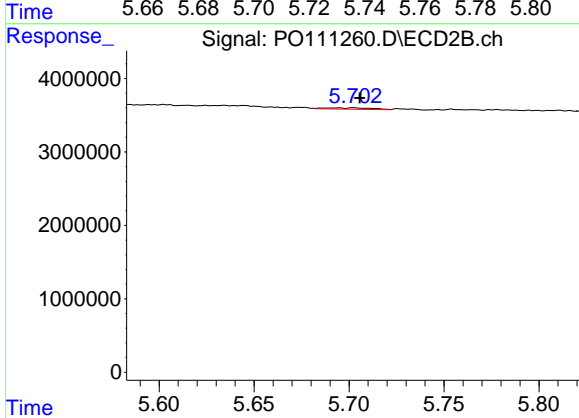
R.T.: 5.564 min
 Delta R.T.: 0.006 min
 Response: 166256
 Conc: 0.51 ng/ml



#27 AR-1254-2

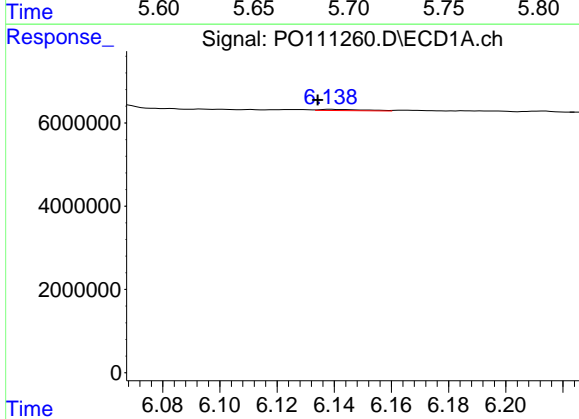
R.T.: 5.729 min
 Delta R.T.: -0.001 min
 Response: 343994
 Conc: 1.05 ng/ml

Instrument :
 ECD_O
 ClientSampleId :
 PB168102BL



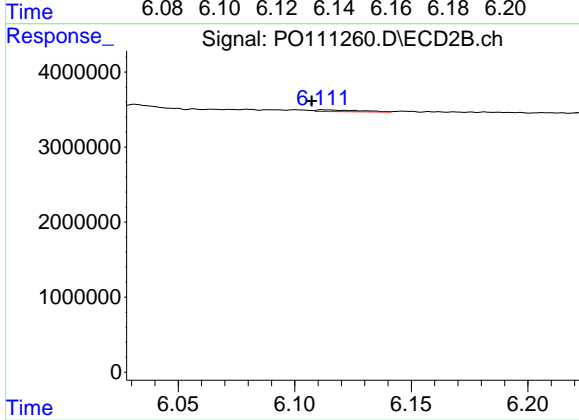
#27 AR-1254-2

R.T.: 5.695 min
 Delta R.T.: -0.011 min
 Response: 314498
 Conc: 1.11 ng/ml



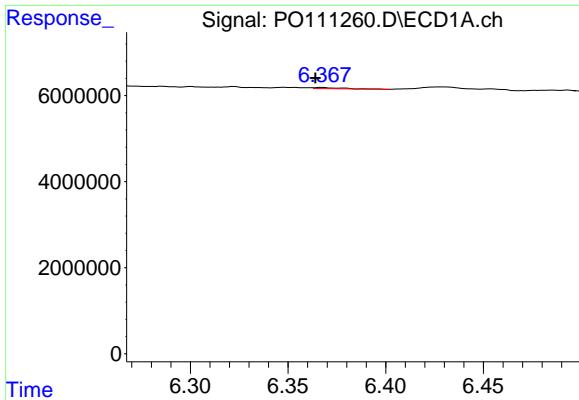
#28 AR-1254-3

R.T.: 6.139 min
 Delta R.T.: 0.005 min
 Response: 343108
 Conc: 0.65 ng/ml



#28 AR-1254-3

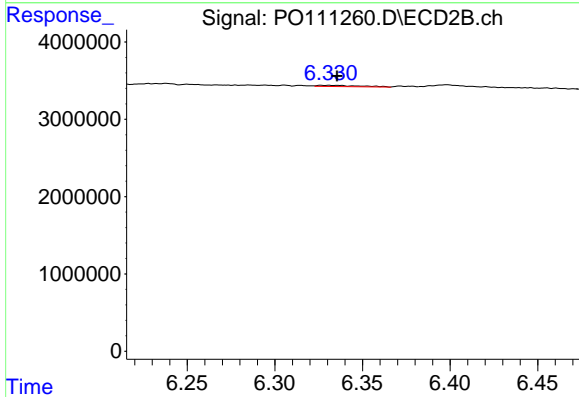
R.T.: 6.112 min
 Delta R.T.: 0.005 min
 Response: 285352
 Conc: 0.66 ng/ml



#29 AR-1254-4

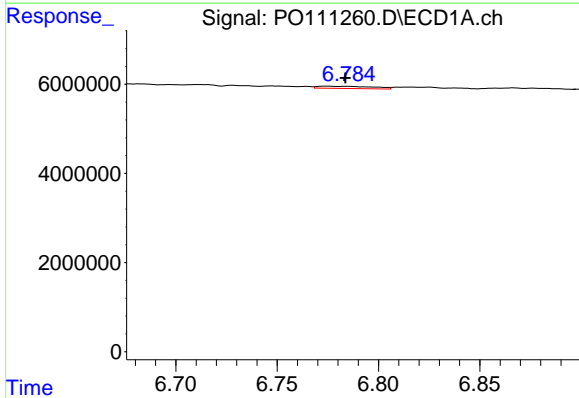
R.T.: 6.368 min
 Delta R.T.: 0.004 min
 Response: 245894
 Conc: 0.73 ng/ml

Instrument :
 ECD_O
 ClientSampleId :
 PB168102BL



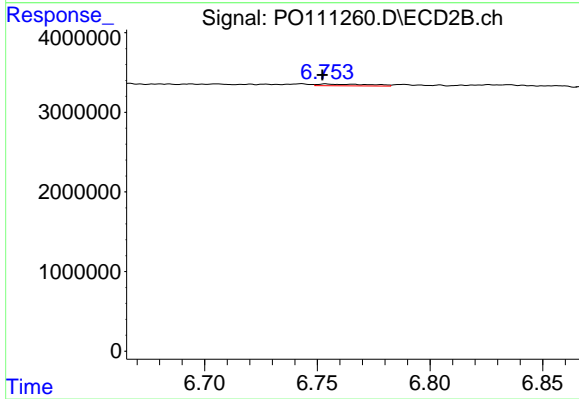
#29 AR-1254-4

R.T.: 6.331 min
 Delta R.T.: -0.005 min
 Response: 261665
 Conc: 1.06 ng/ml



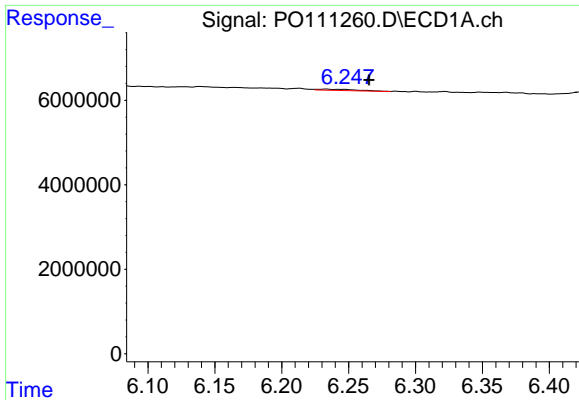
#30 AR-1254-5

R.T.: 6.775 min
 Delta R.T.: -0.009 min
 Response: 939880
 Conc: 1.98 ng/ml



#30 AR-1254-5

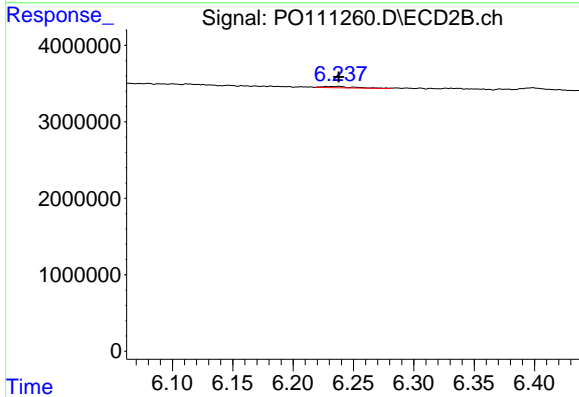
R.T.: 6.754 min
 Delta R.T.: 0.002 min
 Response: 353364
 Conc: 1.02 ng/ml



#31 AR-1260-1

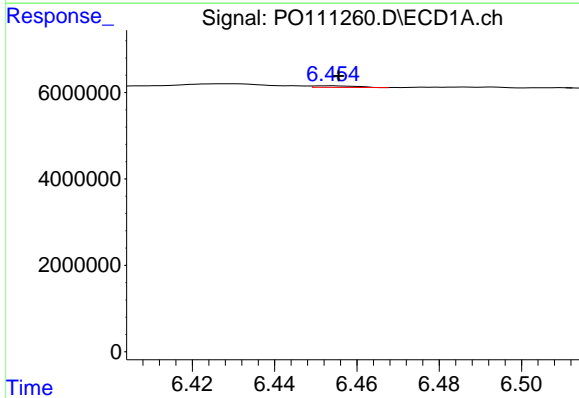
R.T.: 6.233 min
 Delta R.T.: -0.032 min
 Response: 587100
 Conc: 1.93 ng/ml

Instrument :
 ECD_O
 ClientSampleId :
 PB168102BL



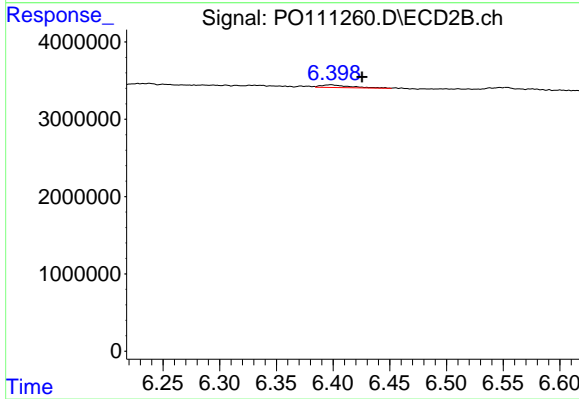
#31 AR-1260-1

R.T.: 6.238 min
 Delta R.T.: 0.000 min
 Response: 337033
 Conc: 1.35 ng/ml



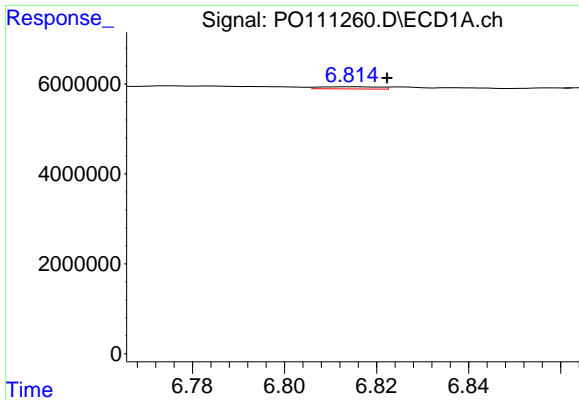
#32 AR-1260-2

R.T.: 6.454 min
 Delta R.T.: -0.002 min
 Response: 259403
 Conc: 0.68 ng/ml



#32 AR-1260-2

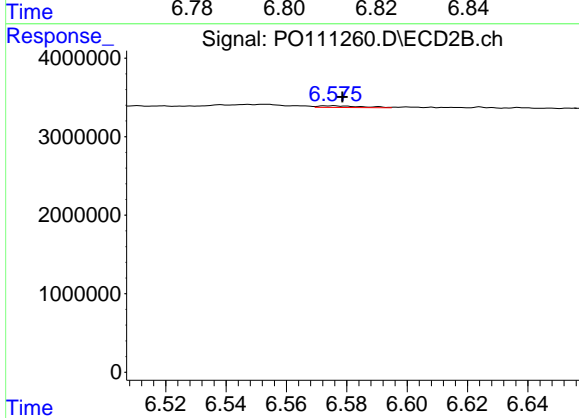
R.T.: 6.398 min
 Delta R.T.: -0.027 min
 Response: 634641
 Conc: 2.16 ng/ml



#33 AR-1260-3

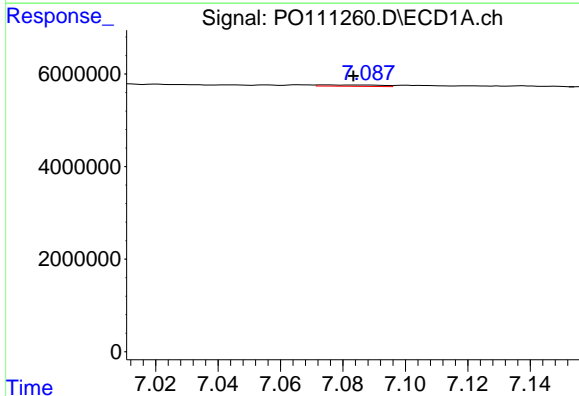
R.T.: 6.815 min
 Delta R.T.: -0.008 min
 Response: 444604
 Conc: 1.28 ng/ml

Instrument :
 ECD_O
 ClientSampleId :
 PB168102BL



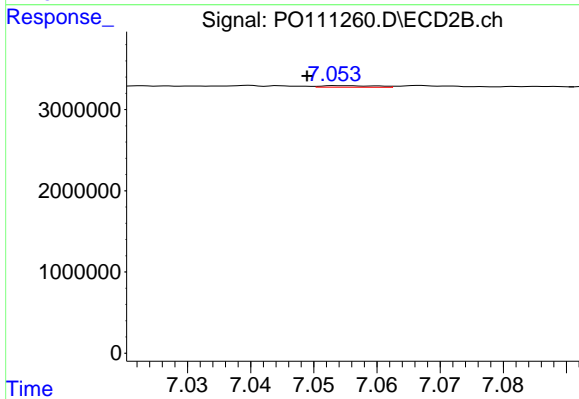
#33 AR-1260-3

R.T.: 6.575 min
 Delta R.T.: -0.004 min
 Response: 218179
 Conc: 0.76 ng/ml



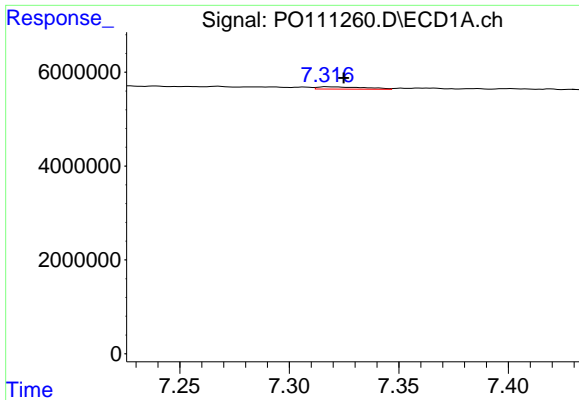
#34 AR-1260-4

R.T.: 7.075 min
 Delta R.T.: -0.008 min
 Response: 412357
 Conc: 1.47 ng/ml



#34 AR-1260-4

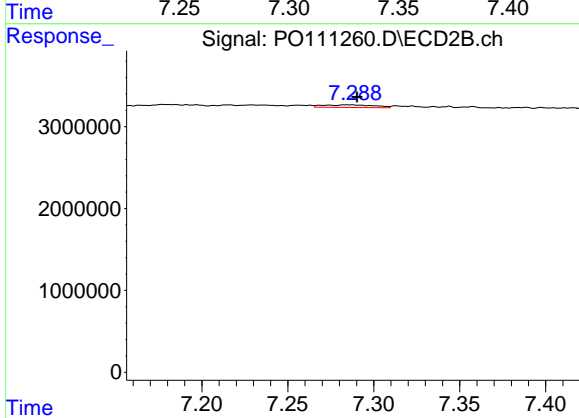
R.T.: 7.054 min
 Delta R.T.: 0.006 min
 Response: 116943
 Conc: 0.58 ng/ml



#35 AR-1260-5

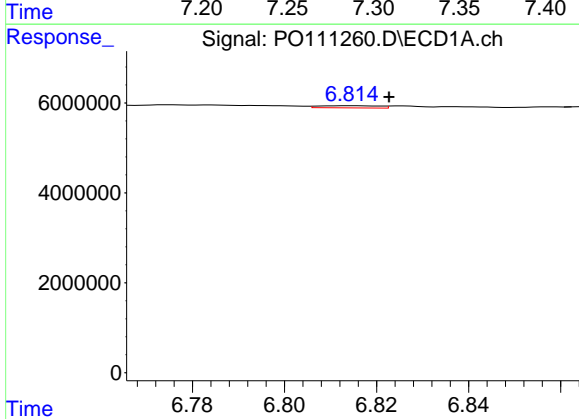
R.T.: 7.317 min
 Delta R.T.: -0.007 min
 Response: 740231
 Conc: 1.03 ng/ml

Instrument :
 ECD_O
 ClientSampleId :
 PB168102BL



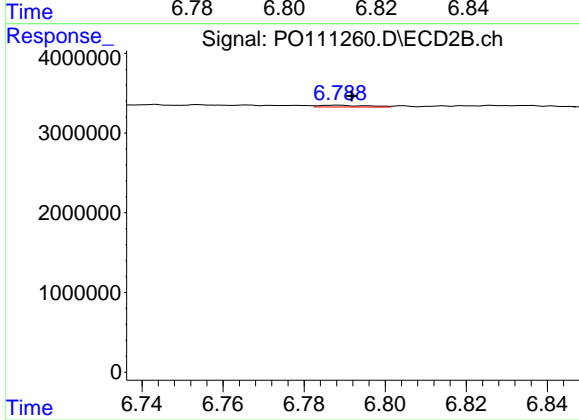
#35 AR-1260-5

R.T.: 7.284 min
 Delta R.T.: -0.006 min
 Response: 660273
 Conc: 1.44 ng/ml



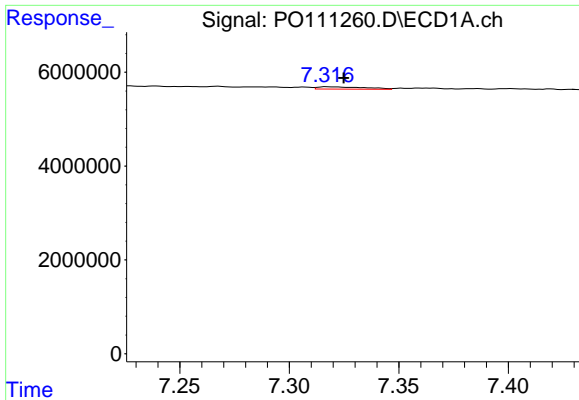
#36 AR-1262-1

R.T.: 6.815 min
 Delta R.T.: -0.008 min
 Response: 444604
 Conc: 0.91 ng/ml



#36 AR-1262-1

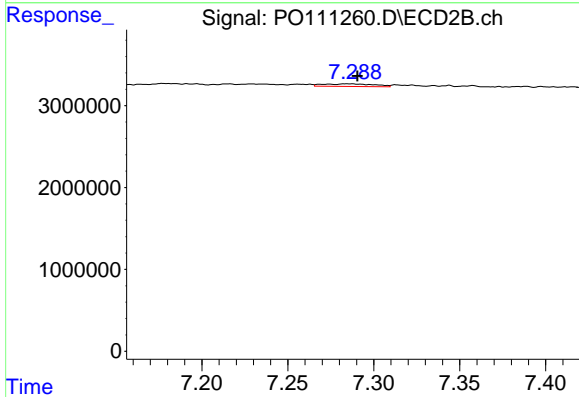
R.T.: 6.788 min
 Delta R.T.: -0.004 min
 Response: 187795
 Conc: 0.55 ng/ml



#37 AR-1262-2

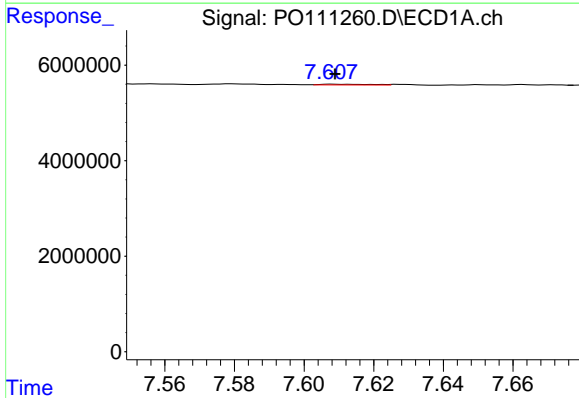
R.T.: 7.317 min
 Delta R.T.: -0.007 min
 Response: 740231
 Conc: 0.92 ng/ml

Instrument :
 ECD_O
 ClientSampleId :
 PB168102BL



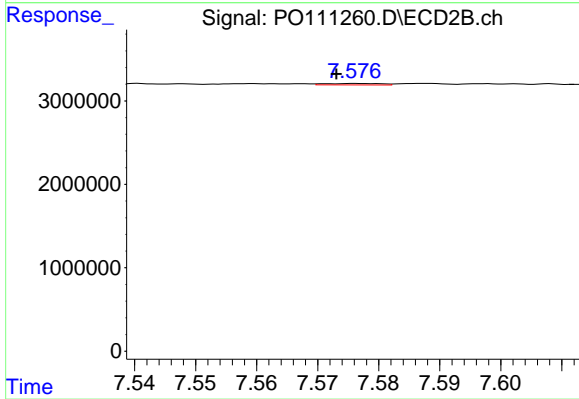
#37 AR-1262-2

R.T.: 7.284 min
 Delta R.T.: -0.006 min
 Response: 660273
 Conc: 1.31 ng/ml



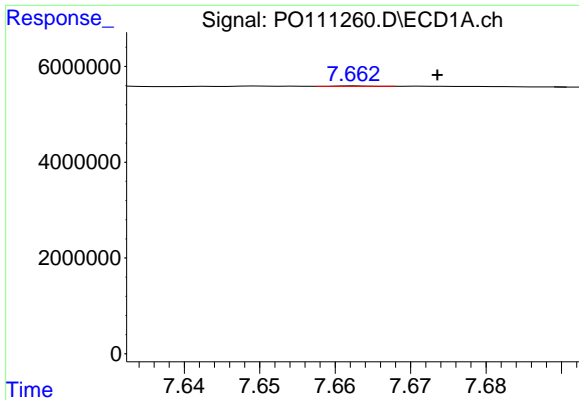
#38 AR-1262-3

R.T.: 7.608 min
 Delta R.T.: 0.000 min
 Response: 159600
 Conc: 0.47 ng/ml



#38 AR-1262-3

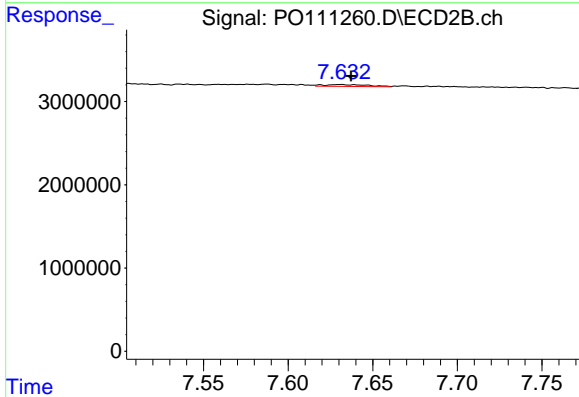
R.T.: 7.577 min
 Delta R.T.: 0.004 min
 Response: 109966
 Conc: 0.59 ng/ml



#39 AR-1262-4

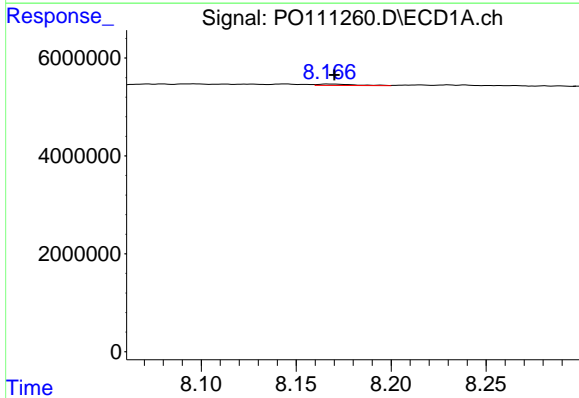
R.T.: 7.663 min
 Delta R.T.: -0.011 min
 Response: 29530
 Conc: 0.05 ng/ml

Instrument :
 ECD_O
 ClientSampleId :
 PB168102BL



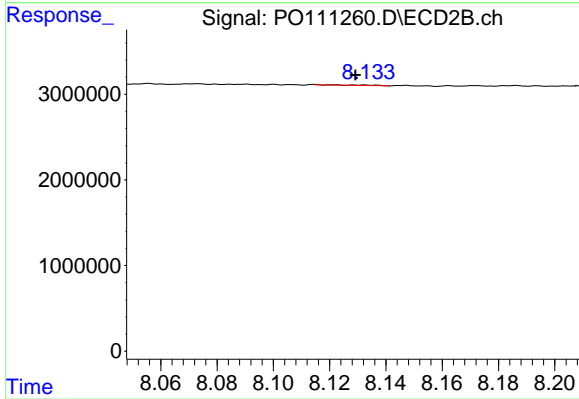
#39 AR-1262-4

R.T.: 7.631 min
 Delta R.T.: -0.006 min
 Response: 415019
 Conc: 1.26 ng/ml



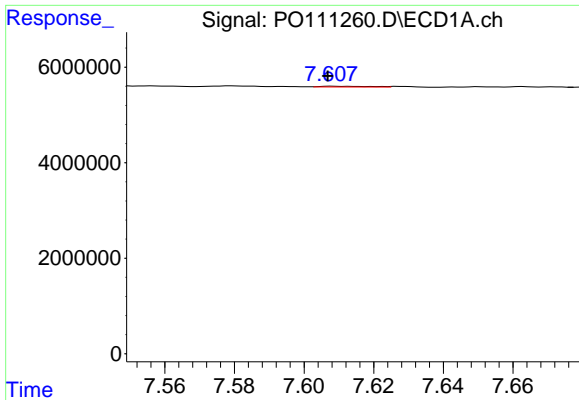
#40 AR-1262-5

R.T.: 8.168 min
 Delta R.T.: -0.003 min
 Response: 372383
 Conc: 1.31 ng/ml



#40 AR-1262-5

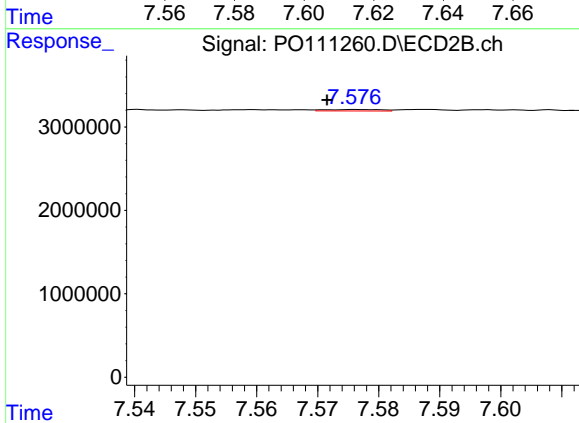
R.T.: 8.132 min
 Delta R.T.: 0.003 min
 Response: 47073
 Conc: 0.42 ng/ml



#41 AR-1268-1

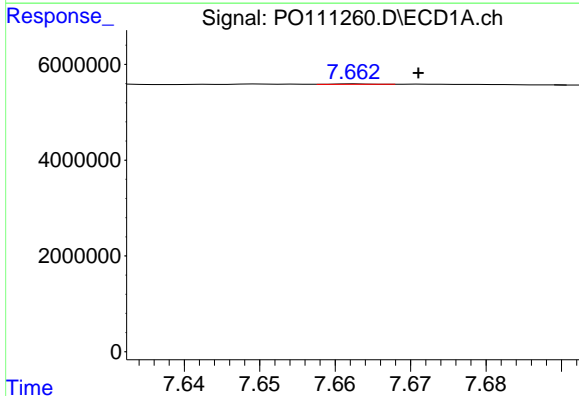
R.T.: 7.608 min
 Delta R.T.: 0.001 min
 Response: 159600
 Conc: 0.16 ng/ml

Instrument :
 ECD_O
 ClientSampleId :
 PB168102BL



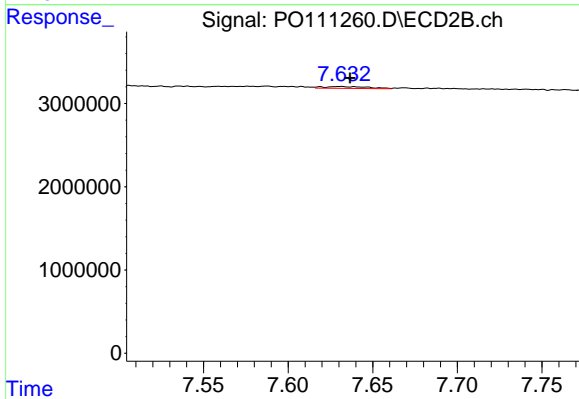
#41 AR-1268-1

R.T.: 7.577 min
 Delta R.T.: 0.005 min
 Response: 109966
 Conc: 0.21 ng/ml



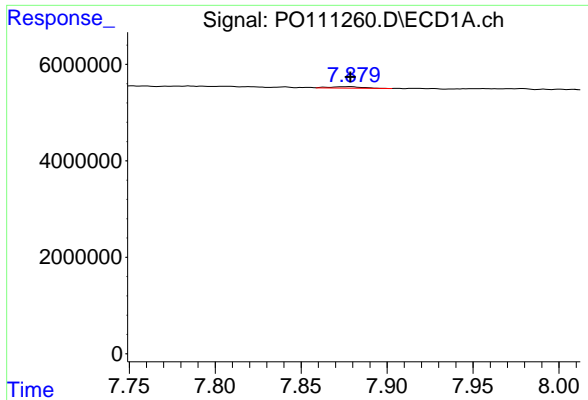
#42 AR-1268-2

R.T.: 7.663 min
 Delta R.T.: -0.008 min
 Response: 29530
 Conc: 0.03 ng/ml



#42 AR-1268-2

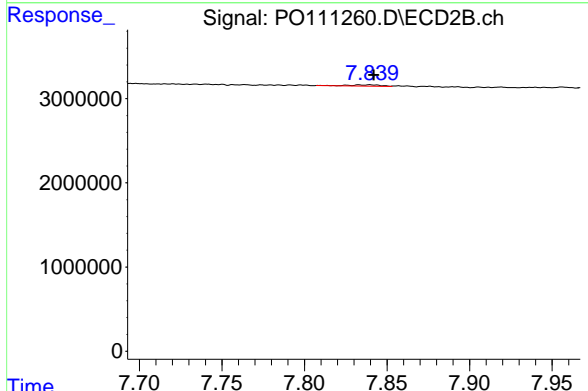
R.T.: 7.631 min
 Delta R.T.: -0.005 min
 Response: 415019
 Conc: 0.86 ng/ml



#43 AR-1268-3

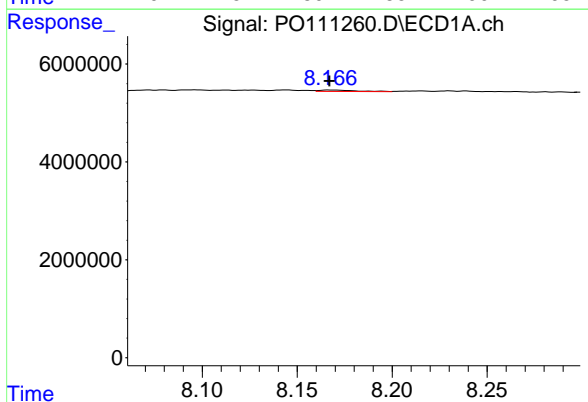
R.T.: 7.879 min
 Delta R.T.: 0.000 min
 Response: 371689
 Conc: 0.49 ng/ml

Instrument :
 ECD_O
 ClientSampleId :
 PB168102BL



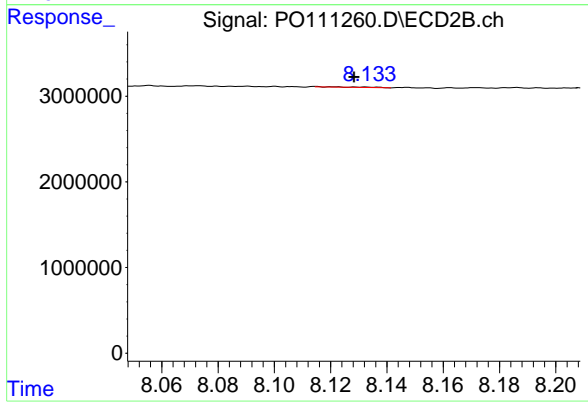
#43 AR-1268-3

R.T.: 7.840 min
 Delta R.T.: -0.002 min
 Response: 204038
 Conc: 0.59 ng/ml



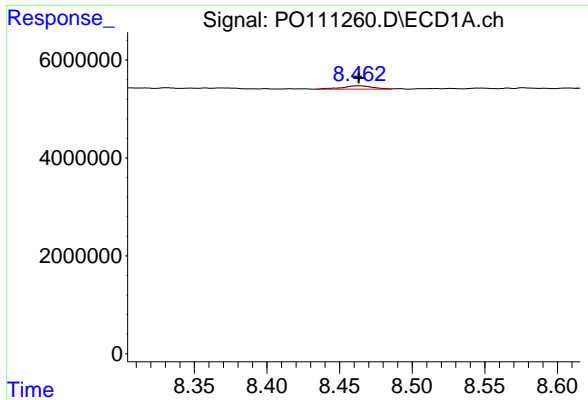
#44 AR-1268-4

R.T.: 8.168 min
 Delta R.T.: 0.000 min
 Response: 372383
 Conc: 1.14 ng/ml



#44 AR-1268-4

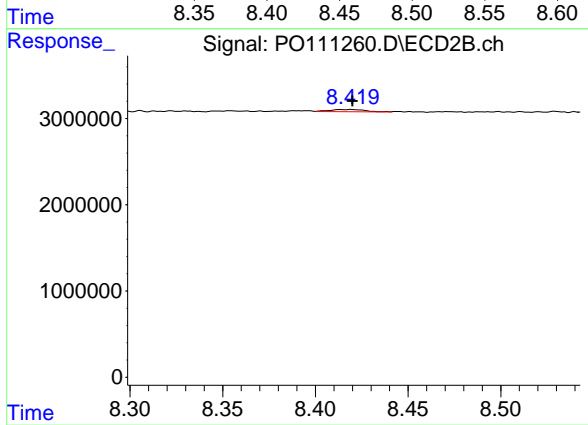
R.T.: 8.132 min
 Delta R.T.: 0.004 min
 Response: 47073
 Conc: 0.37 ng/ml



#45 AR-1268-5

R.T.: 8.463 min
 Delta R.T.: 0.000 min
 Response: 981398
 Conc: 0.45 ng/ml

Instrument :
 ECD_O
 ClientSampleId :
 PB168102BL



#45 AR-1268-5

R.T.: 8.419 min
 Delta R.T.: 0.000 min
 Response: 343148
 Conc: 0.46 ng/ml