

Data Path : Z:\pestpcbsrv\HPCHEM1\ECD_O\Data\P0052223\
 Data File : P0095229.D
 Signal(s) : Signal #1: ECD1A.ch Signal #2: ECD2B.ch
 Acq On : 22 May 2023 14:31
 Operator : YP/AJ
 Sample : AR1660CCC500
 Misc :
 ALS Vial : 3 Sample Multiplier: 1

Instrument :
 ECD_O
 ClientSampleId :

Integration File signal 1: autoint1.e
 Integration File signal 2: autoint2.e
 Quant Time: May 22 21:55:12 2023
 Quant Method : Z:\pestpcbsrv\HPCHEM1\ECD_O\methods\P0051823.M
 Quant Title : GC EXTRACTABLES
 QLast Update : Fri May 19 06:20:17 2023
 Response via : Initial Calibration
 Integrator: ChemStation

Volume Inj. : 2 µl
 Signal #1 Phase : ZB-MR1 Signal #2 Phase: ZB-MR2
 Signal #1 Info : 30Mx0.32mmx 0.50µ Signal #2 Info : 30M x 0.32mm x 0.25µm

Compound	RT#1	RT#2	Resp#1	Resp#2	ng/ml	ng/ml

System Monitoring Compounds						
1) SA Tetrachlo...	4.497	3.653	144.8E6	54677633	49.688	48.153
2) SA Decachlor...	10.555	8.713	116.5E6	45574200	50.184	46.992
Target Compounds						
3) L1 AR-1016-1	5.699	4.746	49236156	19339242	472.211	486.792
4) L1 AR-1016-2	5.722	4.765	71631408	27225187	474.976	490.400
5) L1 AR-1016-3	5.787	4.942	44655050	14949226	472.289	499.529
6) L1 AR-1016-4	5.887	4.985	34899965	12525967	463.732	488.004
7) L1 AR-1016-5	6.192	5.199	35042922	15761582	470.772	498.667
8) L2 AR-1221-1	4.705	3.867	4657351	1968780	124.857	131.253
9) L2 AR-1221-2	4.800	3.954	6908104	2986524	235.928	255.245
10) L2 AR-1221-3	4.878	4.031	26500369	11124787	311.891	320.867
11) L3 AR-1232-1	4.878	4.031	26500369	11124787	418.515	420.873
12) L3 AR-1232-2	5.424	4.765	35409941	27225187	989.834	1056.496
13) L3 AR-1232-3	5.722	4.942	71631408	14949226	1062.304	1076.956
14) L3 AR-1232-4	5.887	5.027	34899965	15381128	1028.349	1160.401
15) L3 AR-1232-5	5.983	5.199	31000840	15761582	1081.594	1122.262
16) L4 AR-1242-1	5.699	4.746	49236156	19339242	617.261	632.358
17) L4 AR-1242-2	5.722	4.765	71631408	27225187	626.670	641.114
18) L4 AR-1242-3	5.787	4.942	44655050	14949226	610.097	641.652
19) L4 AR-1242-4	5.887	5.027	34899965	15381128	600.989	624.632
20) L4 AR-1242-5	6.649	5.555	4752033	12863868	81.368	433.416 #
21) L5 AR-1248-1	5.699	4.746	49236156	19339242	688.343	704.862
22) L5 AR-1248-2	5.983	4.985	31000840	12525967	292.411	311.275
23) L5 AR-1248-3	6.192	5.027	35042922	15381128	305.433	365.736
24) L5 AR-1248-4	6.582	5.199	32674698	15761582	259.179	327.156 #
25) L5 AR-1248-5	6.649	5.594	4752033	2236635	38.969	49.951 #
26) L6 AR-1254-1	6.582	5.555	32674698	12863868	288.912	207.481 #
27) L6 AR-1254-2	6.809	5.702	30206028	12543710	173.879	224.991 #
28) L6 AR-1254-3	7.186	6.092	15642719	4766148	89.169	55.563 #
29) L6 AR-1254-4	7.483	6.339	9563653	2215267	74.314	42.650 #
30) L6 AR-1254-5	7.917	6.760	101.1E6	38141540	609.790	493.206
31) L7 AR-1260-1	7.358	6.241	66300312	28648028	483.234	471.145
32) L7 AR-1260-2	7.626	6.430	76869222	32978827	476.922	472.879
33) L7 AR-1260-3	7.999	6.585	49779614	31265496	485.573	457.531
34) L7 AR-1260-4	8.234	7.061	67577305	22963136	474.250	472.378
35) L7 AR-1260-5	8.578	7.303	111.8E6	52396915	470.722	471.049
36) L8 AR-1262-1	7.999	6.853	49779614	12992969	284.561	396.156 #
37) L8 AR-1262-2	8.578	7.061	111.8E6	22963136	368.976	330.112
38) L8 AR-1262-3	8.923	7.590	73096726	10629275	348.453	194.662 #
39) L8 AR-1262-4	8.992	7.653	41344874	37127392	253.782	382.086 #
40) L8 AR-1262-5	9.727	8.152	27642566	11428008	257.665	249.929
41) L9 AR-1268-1	8.923	7.590	73096726	10629275	206.065	69.684 #

Data Path : Z:\pestpcbsrv\HPCHEM1\ECD_0\Data\P0052223\
 Data File : P0095229.D
 Signal(s) : Signal #1: ECD1A.ch Signal #2: ECD2B.ch
 Acq On : 22 May 2023 14:31
 Operator : YP/AJ
 Sample : AR1660CCC500
 Misc :
 ALS Vial : 3 Sample Multiplier: 1

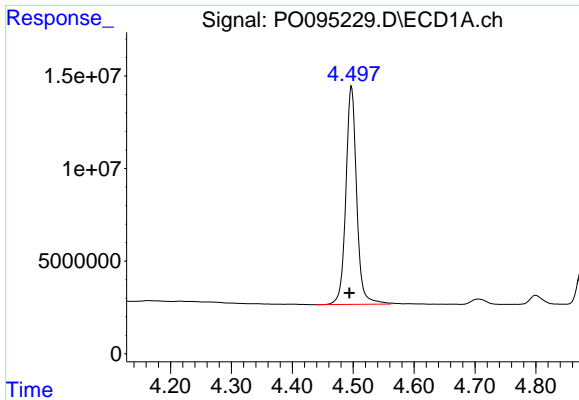
Instrument :
 ECD_0
 ClientSampleId :

Integration File signal 1: autoint1.e
 Integration File signal 2: autoint2.e
 Quant Time: May 22 21:55:12 2023
 Quant Method : Z:\pestpcbsrv\HPCHEM1\ECD_0\methods\P0051823.M
 Quant Title : GC EXTRACTABLES
 QLast Update : Fri May 19 06:20:17 2023
 Response via : Initial Calibration
 Integrator: ChemStation

Volume Inj. : 2 µl
 Signal #1 Phase : ZB-MR1 Signal #2 Phase: ZB-MR2
 Signal #1 Info : 30Mx0.32mmx 0.50µ Signal #2 Info : 30M x 0.32mm x 0.25µm

	Compound	RT#1	RT#2	Resp#1	Resp#2	ng/ml	ng/ml
42)	L9 AR-1268-2	8.992	7.653	41344874	37127392	127.481	272.002 #
43)	L9 AR-1268-3	9.259	7.864	2164682	2009509	7.828	16.689 #
44)	L9 AR-1268-4	9.727	8.152	27642566	11428008	233.919	225.881
45)	L9 AR-1268-5	10.181	8.450	9189286	4050357	10.396	11.706

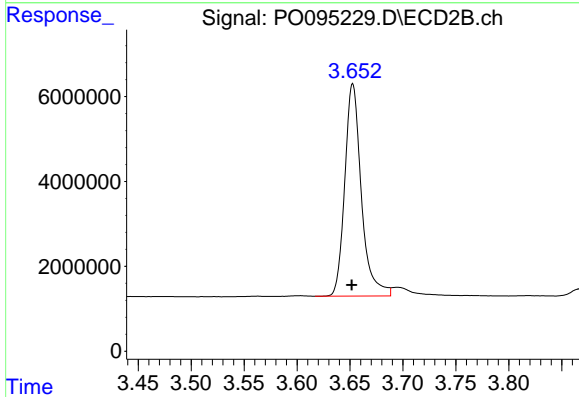
(f)=RT Delta > 1/2 Window (#)=Amounts differ by > 25% (m)=manual int.



#1 Tetrachloro-m-xylene

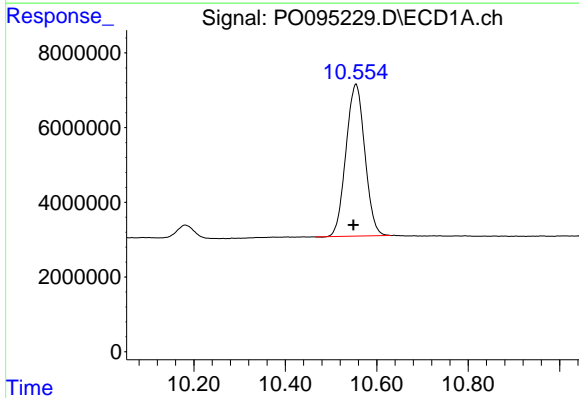
R.T.: 4.497 min
 Delta R.T.: 0.003 min
 Response: 144781707
 Conc: 49.69 ng/ml

Instrument :
 ECD_O
 ClientSampleId :



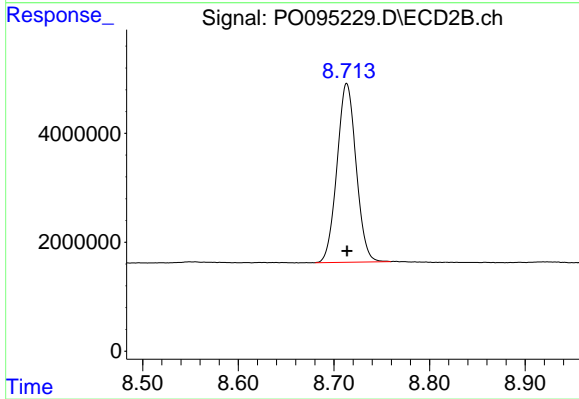
#1 Tetrachloro-m-xylene

R.T.: 3.653 min
 Delta R.T.: 0.000 min
 Response: 54677633
 Conc: 48.15 ng/ml



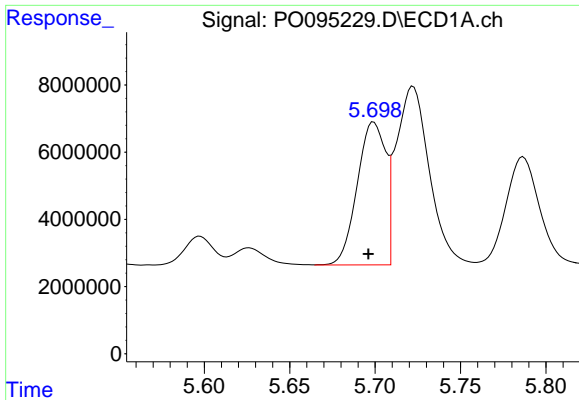
#2 Decachlorobiphenyl

R.T.: 10.555 min
 Delta R.T.: 0.006 min
 Response: 116451076
 Conc: 50.18 ng/ml



#2 Decachlorobiphenyl

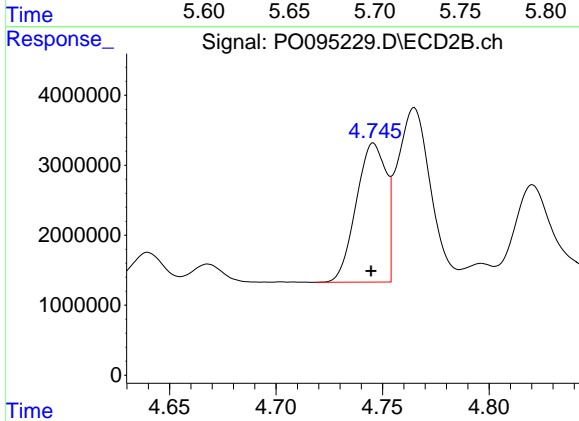
R.T.: 8.713 min
 Delta R.T.: 0.000 min
 Response: 45574200
 Conc: 46.99 ng/ml



#3 AR-1016-1

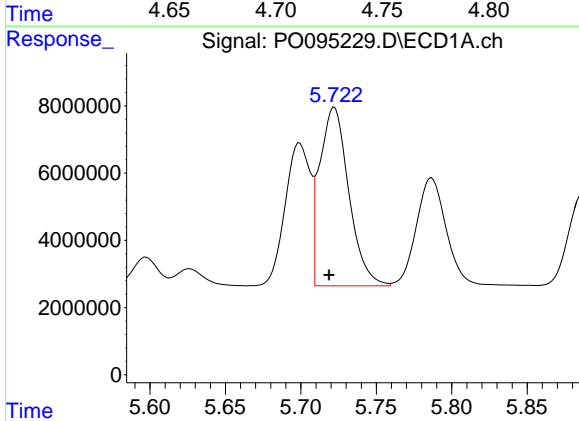
R.T.: 5.699 min
 Delta R.T.: 0.003 min
 Response: 49236156
 Conc: 472.21 ng/ml

Instrument :
 ECD_O
 ClientSampleId :



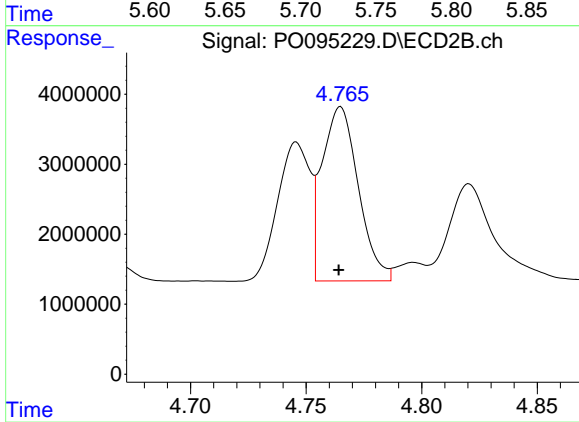
#3 AR-1016-1

R.T.: 4.746 min
 Delta R.T.: 0.001 min
 Response: 19339242
 Conc: 486.79 ng/ml



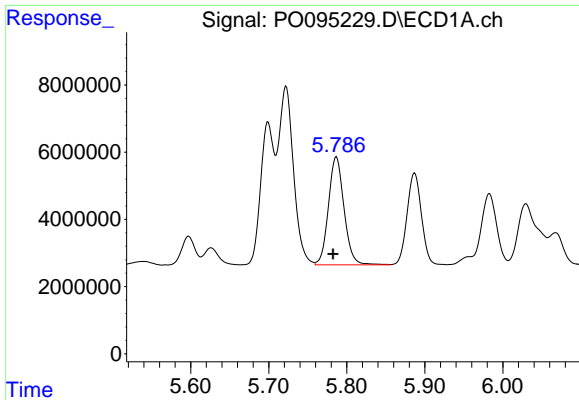
#4 AR-1016-2

R.T.: 5.722 min
 Delta R.T.: 0.004 min
 Response: 71631408
 Conc: 474.98 ng/ml



#4 AR-1016-2

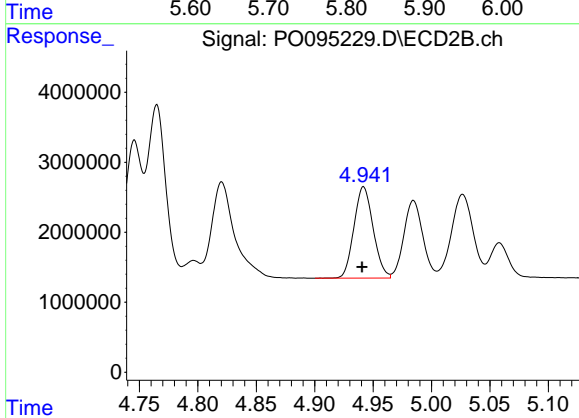
R.T.: 4.765 min
 Delta R.T.: 0.000 min
 Response: 27225187
 Conc: 490.40 ng/ml



#5 AR-1016-3

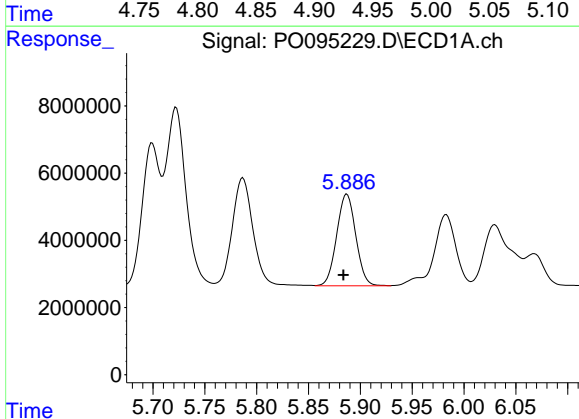
R.T.: 5.787 min
 Delta R.T.: 0.004 min
 Response: 44655050
 Conc: 472.29 ng/ml

Instrument :
 ECD_O
 ClientSampleId :



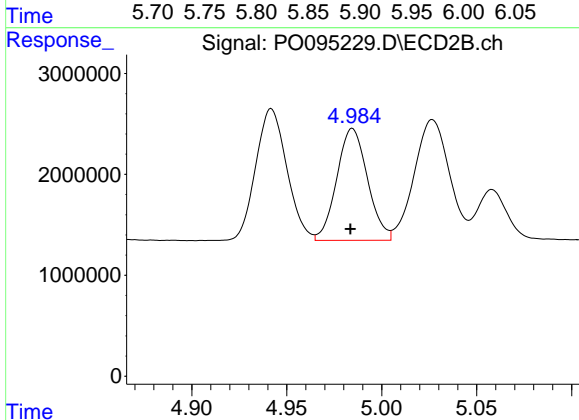
#5 AR-1016-3

R.T.: 4.942 min
 Delta R.T.: 0.001 min
 Response: 14949226
 Conc: 499.53 ng/ml



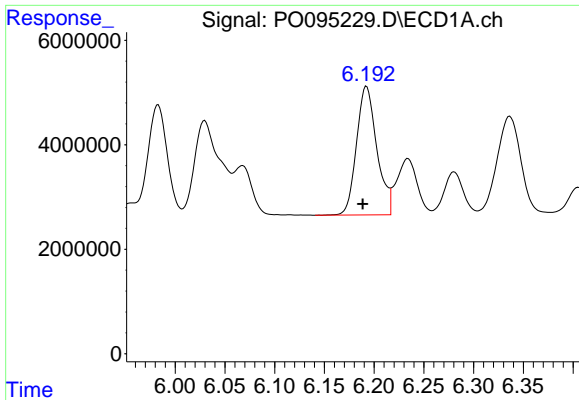
#6 AR-1016-4

R.T.: 5.887 min
 Delta R.T.: 0.003 min
 Response: 34899965
 Conc: 463.73 ng/ml



#6 AR-1016-4

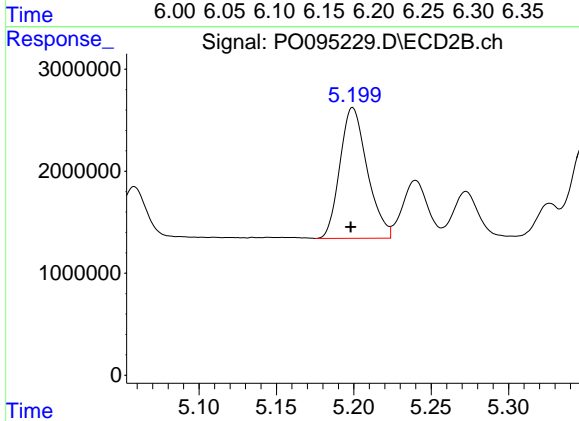
R.T.: 4.985 min
 Delta R.T.: 0.001 min
 Response: 12525967
 Conc: 488.00 ng/ml



#7 AR-1016-5

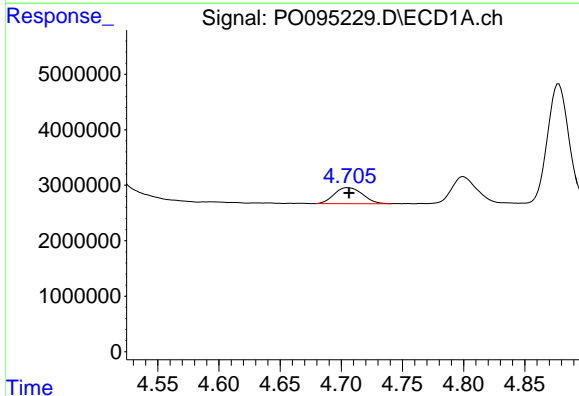
R.T.: 6.192 min
 Delta R.T.: 0.004 min
 Response: 35042922
 Conc: 470.77 ng/ml

Instrument :
 ECD_O
 ClientSampleId :



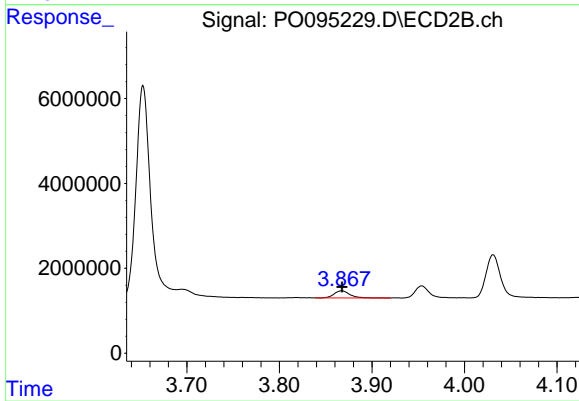
#7 AR-1016-5

R.T.: 5.199 min
 Delta R.T.: 0.001 min
 Response: 15761582
 Conc: 498.67 ng/ml



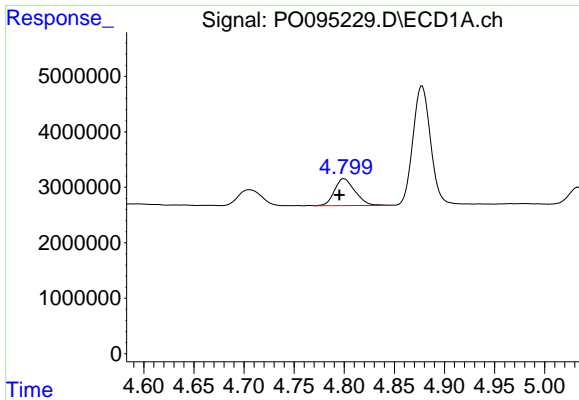
#8 AR-1221-1

R.T.: 4.705 min
 Delta R.T.: 0.000 min
 Response: 4657351
 Conc: 124.86 ng/ml



#8 AR-1221-1

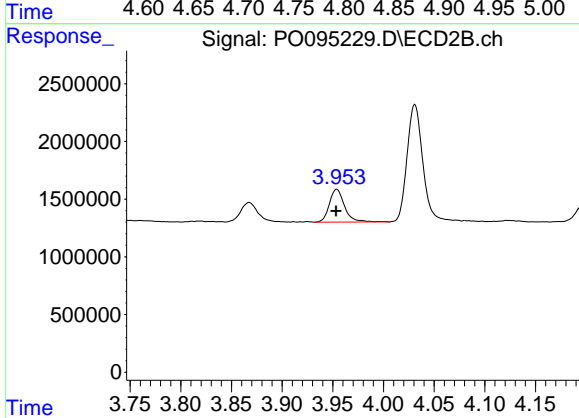
R.T.: 3.867 min
 Delta R.T.: 0.000 min
 Response: 1968780
 Conc: 131.25 ng/ml



#9 AR-1221-2

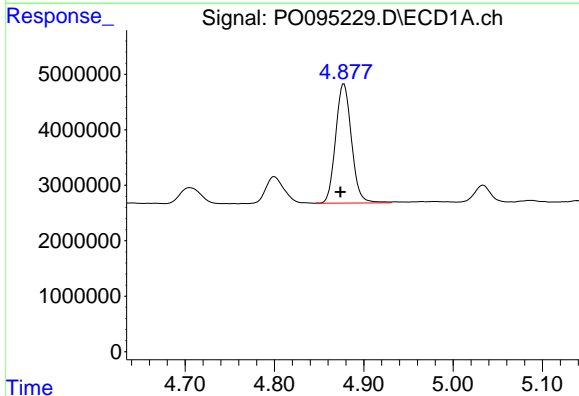
R.T.: 4.800 min
 Delta R.T.: 0.005 min
 Response: 6908104
 Conc: 235.93 ng/ml

Instrument :
 ECD_O
 ClientSampleId :



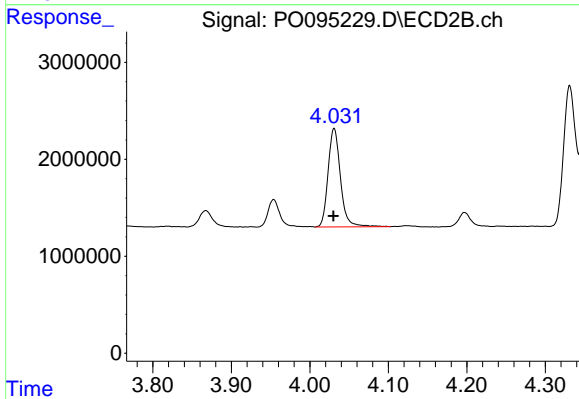
#9 AR-1221-2

R.T.: 3.954 min
 Delta R.T.: 0.000 min
 Response: 2986524
 Conc: 255.25 ng/ml



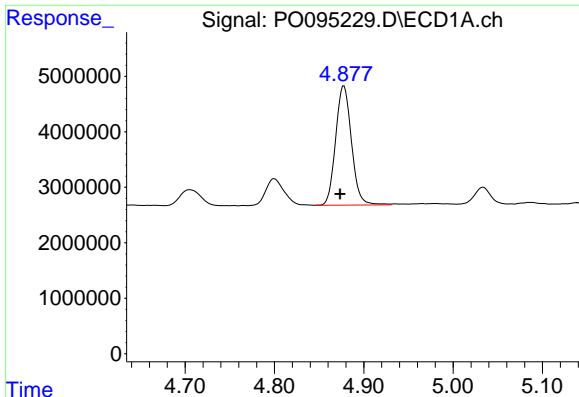
#10 AR-1221-3

R.T.: 4.878 min
 Delta R.T.: 0.004 min
 Response: 26500369
 Conc: 311.89 ng/ml



#10 AR-1221-3

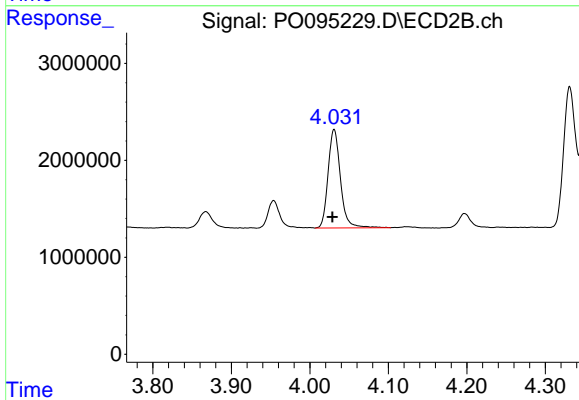
R.T.: 4.031 min
 Delta R.T.: 0.001 min
 Response: 11124787
 Conc: 320.87 ng/ml



#11 AR-1232-1

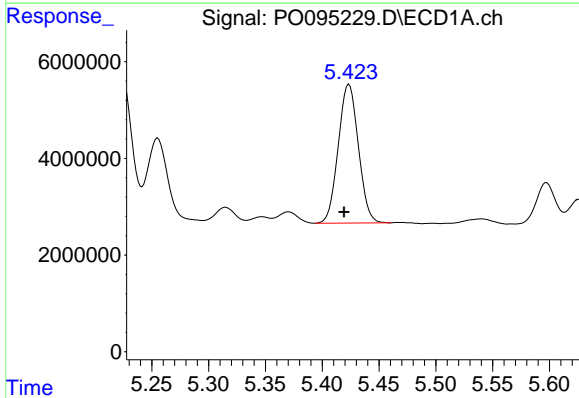
R.T.: 4.878 min
 Delta R.T.: 0.004 min
 Response: 26500369
 Conc: 418.51 ng/ml

Instrument :
 ECD_O
 ClientSampleId :



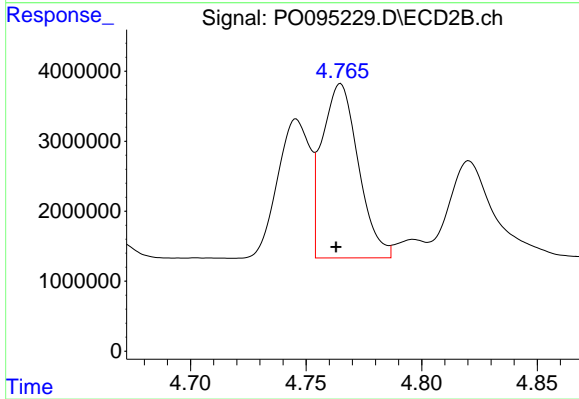
#11 AR-1232-1

R.T.: 4.031 min
 Delta R.T.: 0.003 min
 Response: 11124787
 Conc: 420.87 ng/ml



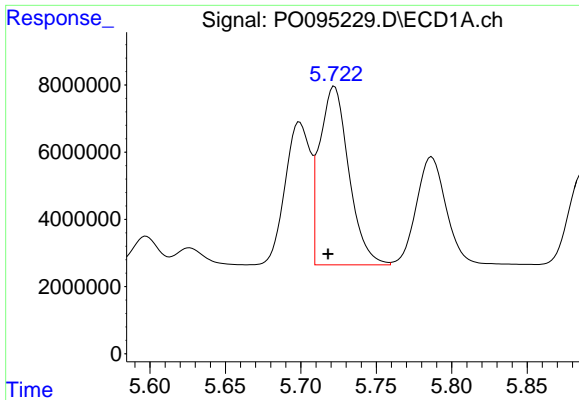
#12 AR-1232-2

R.T.: 5.424 min
 Delta R.T.: 0.004 min
 Response: 35409941
 Conc: 989.83 ng/ml



#12 AR-1232-2

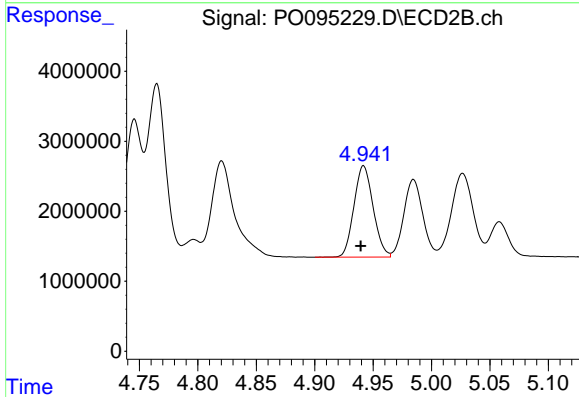
R.T.: 4.765 min
 Delta R.T.: 0.002 min
 Response: 27225187
 Conc: 1056.50 ng/ml



#13 AR-1232-3

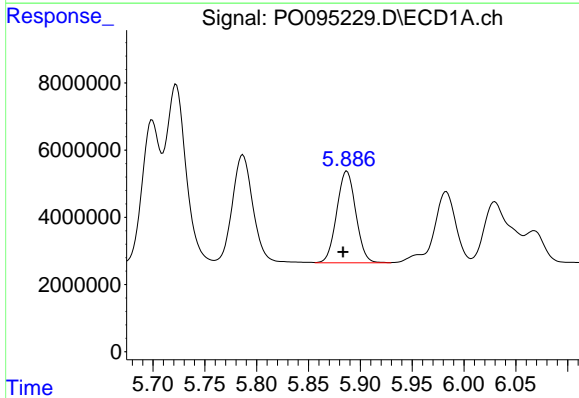
R.T.: 5.722 min
 Delta R.T.: 0.004 min
 Response: 71631408
 Conc: 1062.30 ng/ml

Instrument :
 ECD_O
 ClientSampleId :



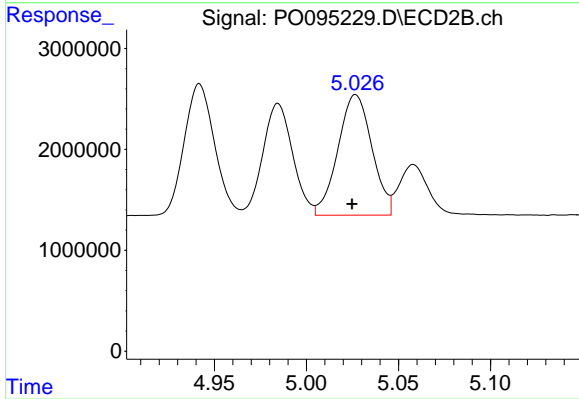
#13 AR-1232-3

R.T.: 4.942 min
 Delta R.T.: 0.002 min
 Response: 14949226
 Conc: 1076.96 ng/ml



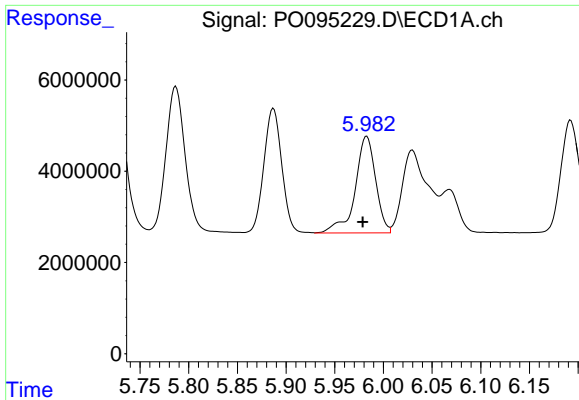
#14 AR-1232-4

R.T.: 5.887 min
 Delta R.T.: 0.004 min
 Response: 34899965
 Conc: 1028.35 ng/ml



#14 AR-1232-4

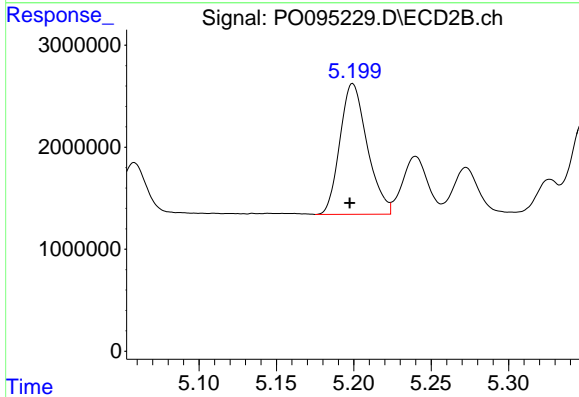
R.T.: 5.027 min
 Delta R.T.: 0.002 min
 Response: 15381128
 Conc: 1160.40 ng/ml



#15 AR-1232-5

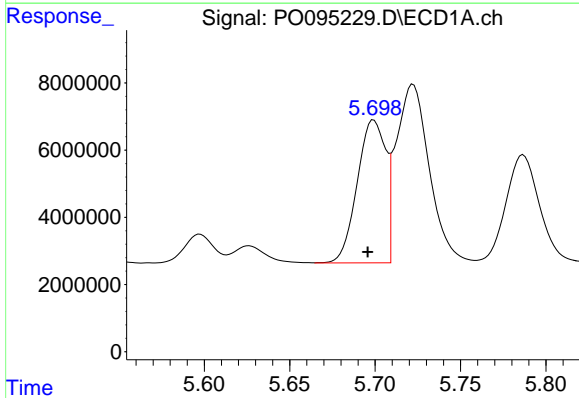
R.T.: 5.983 min
 Delta R.T.: 0.004 min
 Response: 31000840
 Conc: 1081.59 ng/ml

Instrument :
 ECD_O
 ClientSampleId :



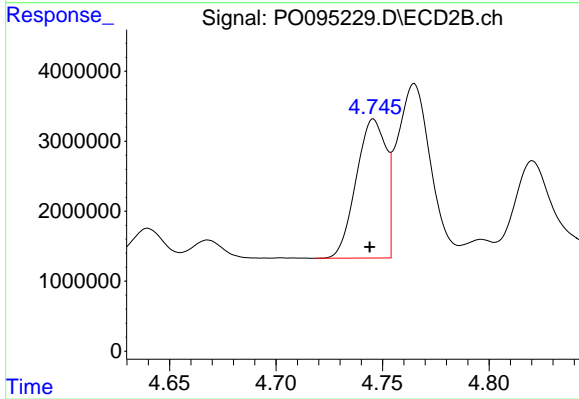
#15 AR-1232-5

R.T.: 5.199 min
 Delta R.T.: 0.002 min
 Response: 15761582
 Conc: 1122.26 ng/ml



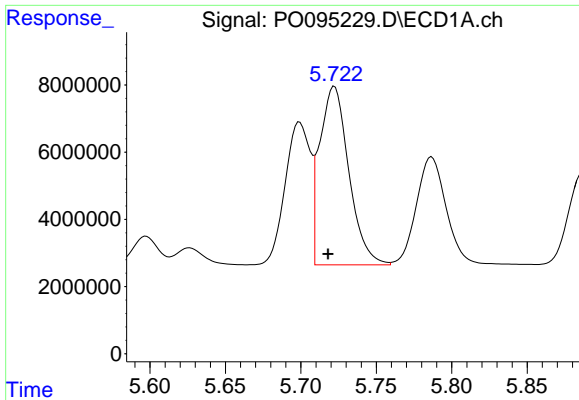
#16 AR-1242-1

R.T.: 5.699 min
 Delta R.T.: 0.004 min
 Response: 49236156
 Conc: 617.26 ng/ml



#16 AR-1242-1

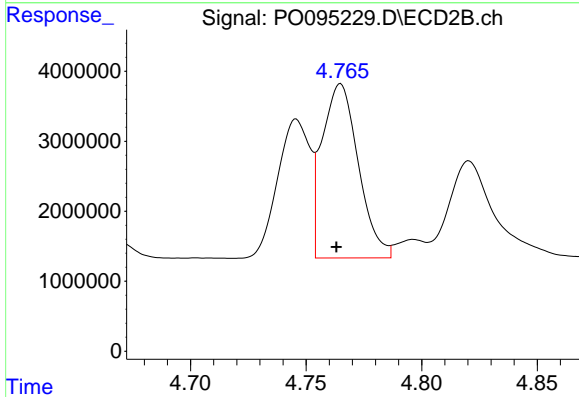
R.T.: 4.746 min
 Delta R.T.: 0.002 min
 Response: 19339242
 Conc: 632.36 ng/ml



#17 AR-1242-2

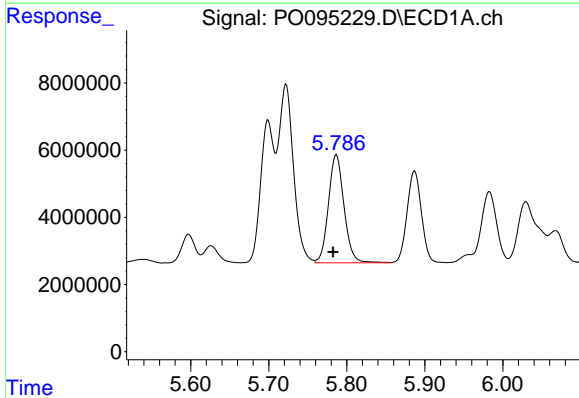
R.T.: 5.722 min
 Delta R.T.: 0.004 min
 Response: 71631408
 Conc: 626.67 ng/ml

Instrument :
 ECD_O
 ClientSampleId :



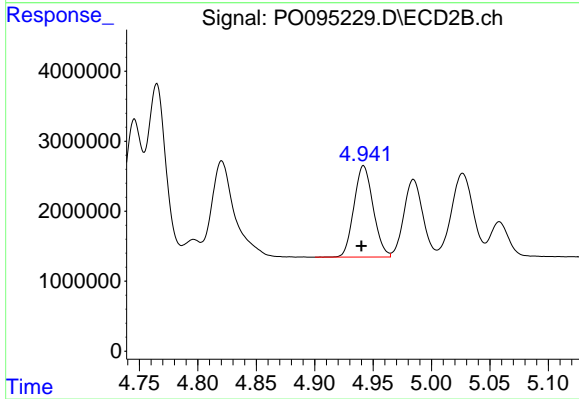
#17 AR-1242-2

R.T.: 4.765 min
 Delta R.T.: 0.002 min
 Response: 27225187
 Conc: 641.11 ng/ml



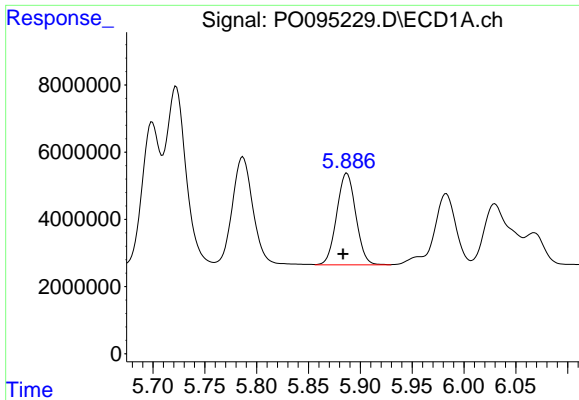
#18 AR-1242-3

R.T.: 5.787 min
 Delta R.T.: 0.004 min
 Response: 44655050
 Conc: 610.10 ng/ml



#18 AR-1242-3

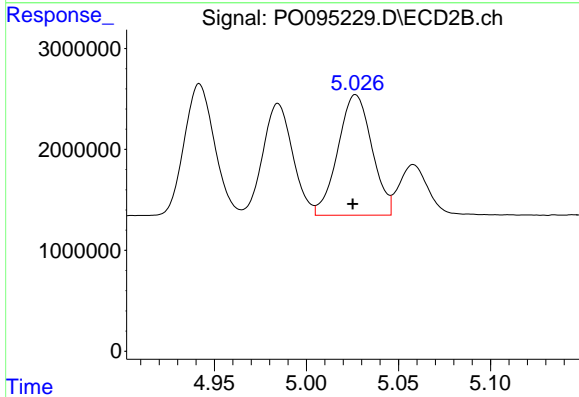
R.T.: 4.942 min
 Delta R.T.: 0.002 min
 Response: 14949226
 Conc: 641.65 ng/ml



#19 AR-1242-4

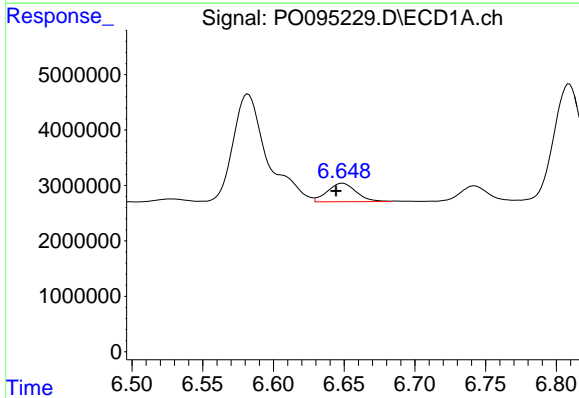
R.T.: 5.887 min
 Delta R.T.: 0.004 min
 Response: 34899965
 Conc: 600.99 ng/ml

Instrument :
 ECD_O
 ClientSampleId :



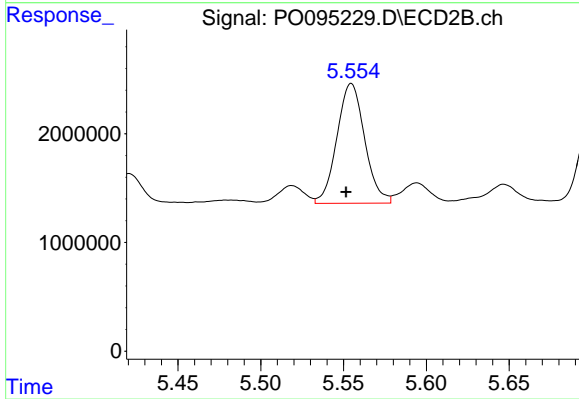
#19 AR-1242-4

R.T.: 5.027 min
 Delta R.T.: 0.001 min
 Response: 15381128
 Conc: 624.63 ng/ml



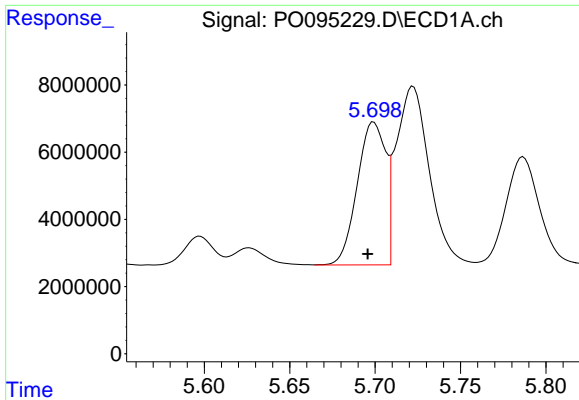
#20 AR-1242-5

R.T.: 6.649 min
 Delta R.T.: 0.005 min
 Response: 4752033
 Conc: 81.37 ng/ml



#20 AR-1242-5

R.T.: 5.555 min
 Delta R.T.: 0.003 min
 Response: 12863868
 Conc: 433.42 ng/ml

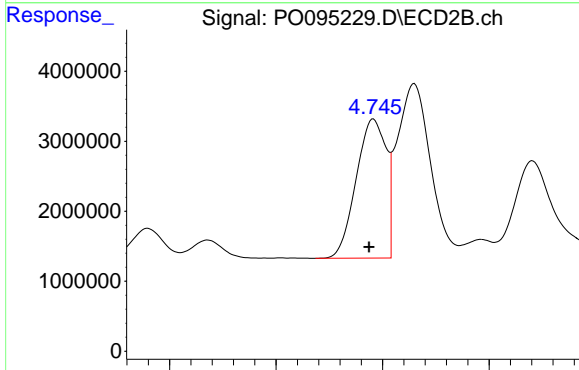


#21 AR-1248-1

R.T.: 5.699 min
 Delta R.T.: 0.004 min
 Response: 49236156
 Conc: 688.34 ng/ml

Instrument :
 ECD_O
 ClientSampleId :

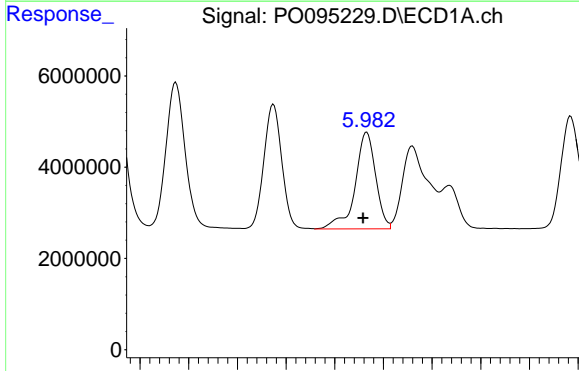
Time 5.60 5.65 5.70 5.75 5.80



#21 AR-1248-1

R.T.: 4.746 min
 Delta R.T.: 0.002 min
 Response: 19339242
 Conc: 704.86 ng/ml

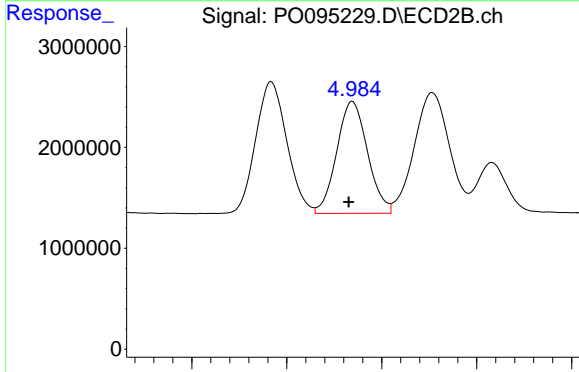
Time 4.65 4.70 4.75 4.80



#22 AR-1248-2

R.T.: 5.983 min
 Delta R.T.: 0.004 min
 Response: 31000840
 Conc: 292.41 ng/ml

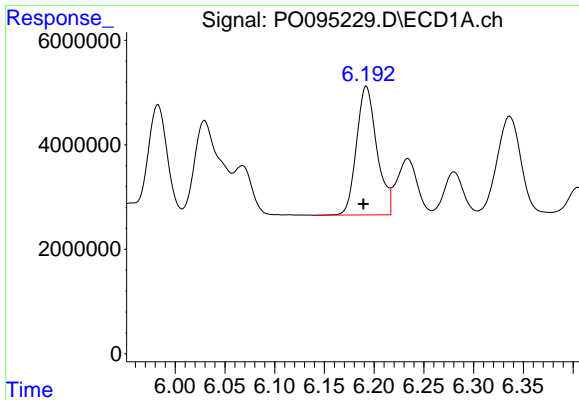
Time 5.75 5.80 5.85 5.90 5.95 6.00 6.05 6.10 6.15



#22 AR-1248-2

R.T.: 4.985 min
 Delta R.T.: 0.002 min
 Response: 12525967
 Conc: 311.27 ng/ml

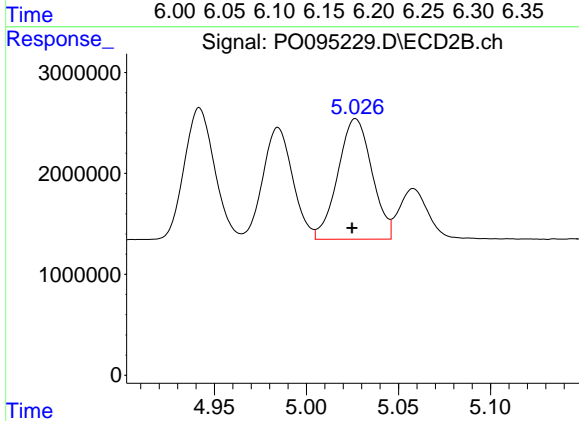
Time 4.90 4.95 5.00 5.05



#23 AR-1248-3

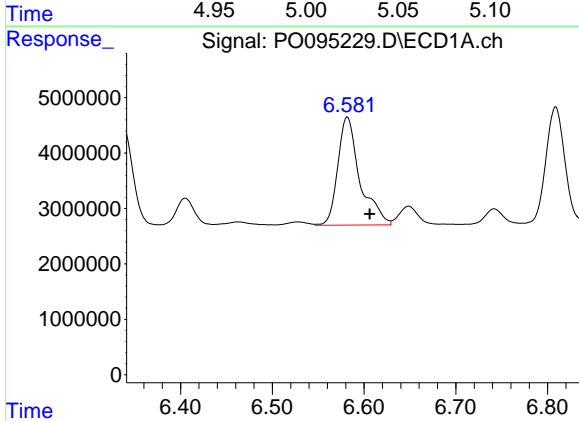
R.T.: 6.192 min
 Delta R.T.: 0.003 min
 Response: 35042922
 Conc: 305.43 ng/ml

Instrument :
 ECD_O
 ClientSampleId :



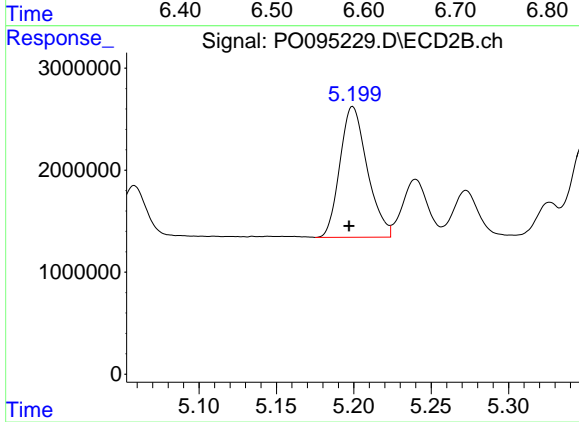
#23 AR-1248-3

R.T.: 5.027 min
 Delta R.T.: 0.002 min
 Response: 15381128
 Conc: 365.74 ng/ml



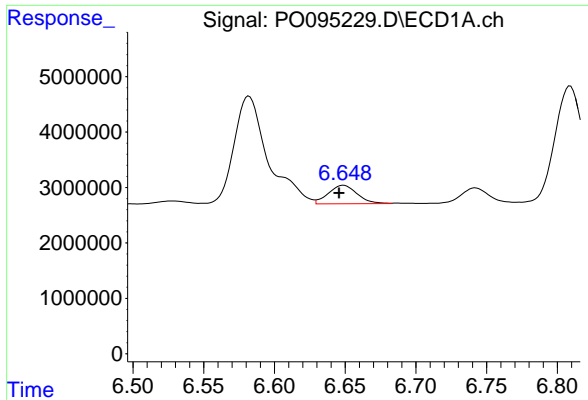
#24 AR-1248-4

R.T.: 6.582 min
 Delta R.T.: -0.024 min
 Response: 32674698
 Conc: 259.18 ng/ml



#24 AR-1248-4

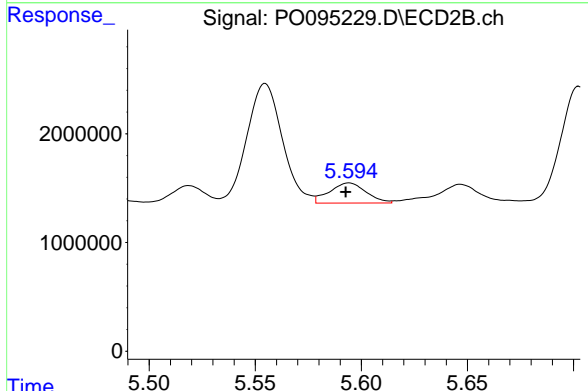
R.T.: 5.199 min
 Delta R.T.: 0.002 min
 Response: 15761582
 Conc: 327.16 ng/ml



#25 AR-1248-5

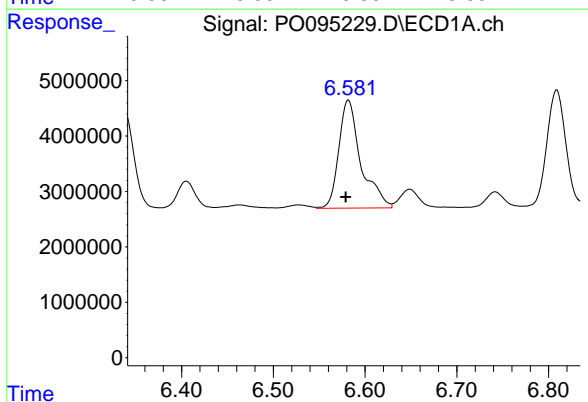
R.T.: 6.649 min
 Delta R.T.: 0.003 min
 Response: 4752033
 Conc: 38.97 ng/ml

Instrument :
 ECD_O
 ClientSampleId :



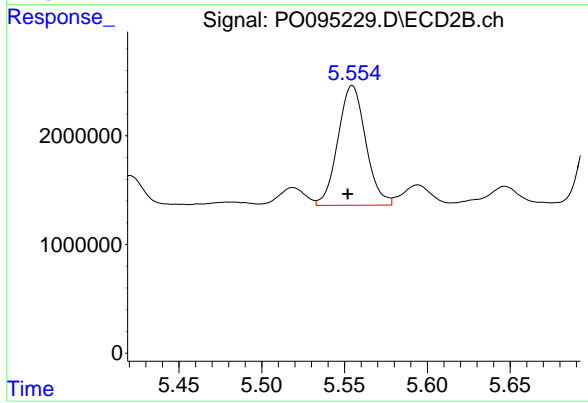
#25 AR-1248-5

R.T.: 5.594 min
 Delta R.T.: 0.002 min
 Response: 2236635
 Conc: 49.95 ng/ml



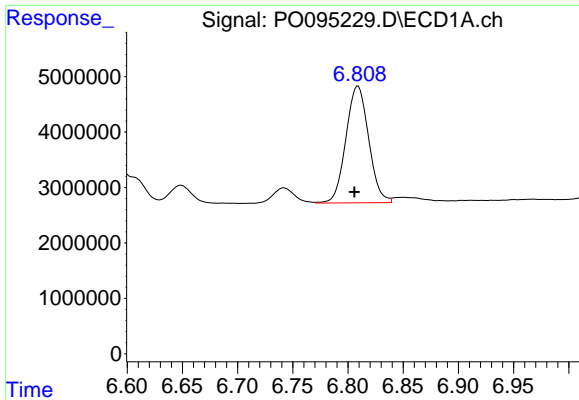
#26 AR-1254-1

R.T.: 6.582 min
 Delta R.T.: 0.003 min
 Response: 32674698
 Conc: 288.91 ng/ml



#26 AR-1254-1

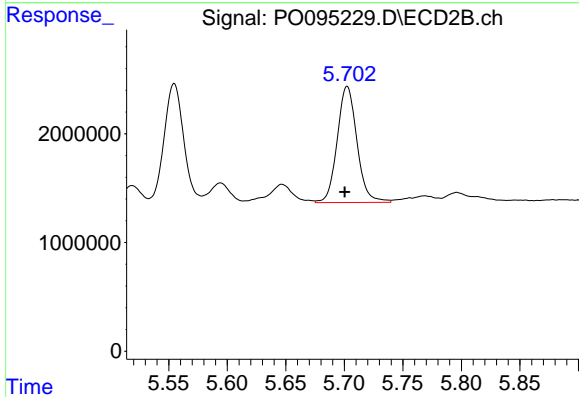
R.T.: 5.555 min
 Delta R.T.: 0.003 min
 Response: 12863868
 Conc: 207.48 ng/ml



#27 AR-1254-2

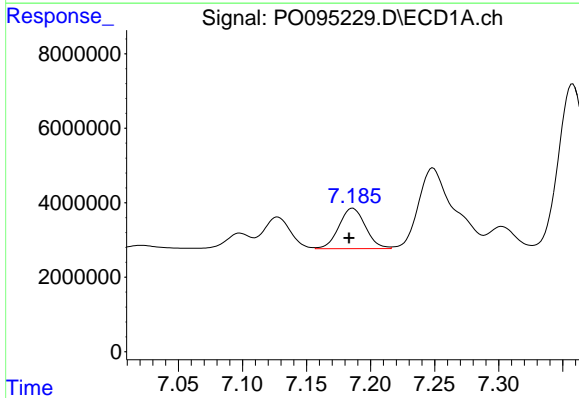
R.T.: 6.809 min
 Delta R.T.: 0.003 min
 Response: 30206028
 Conc: 173.88 ng/ml

Instrument :
 ECD_O
 ClientSampleId :



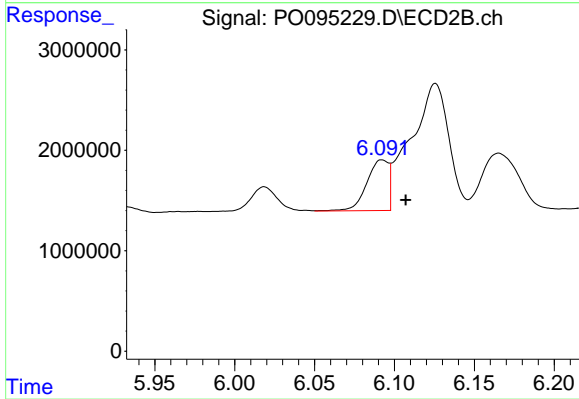
#27 AR-1254-2

R.T.: 5.702 min
 Delta R.T.: 0.002 min
 Response: 12543710
 Conc: 224.99 ng/ml



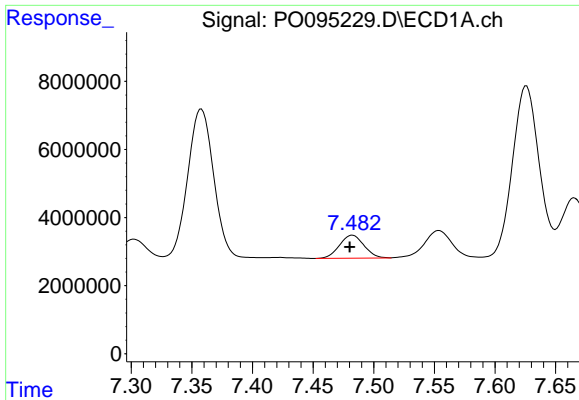
#28 AR-1254-3

R.T.: 7.186 min
 Delta R.T.: 0.003 min
 Response: 15642719
 Conc: 89.17 ng/ml



#28 AR-1254-3

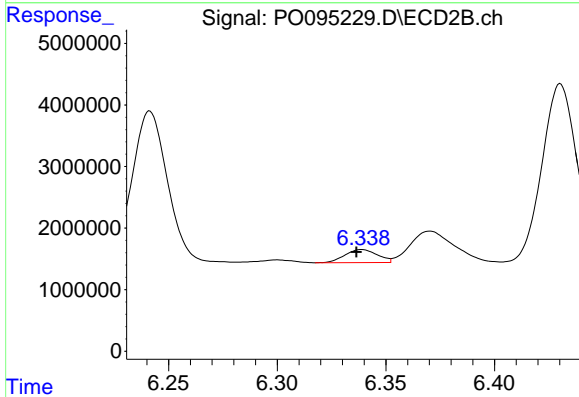
R.T.: 6.092 min
 Delta R.T.: -0.015 min
 Response: 4766148
 Conc: 55.56 ng/ml



#29 AR-1254-4

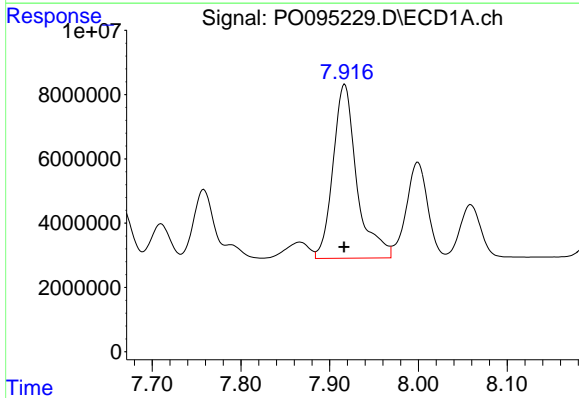
R.T.: 7.483 min
 Delta R.T.: 0.002 min
 Response: 9563653
 Conc: 74.31 ng/ml

Instrument :
 ECD_O
 ClientSampleId :



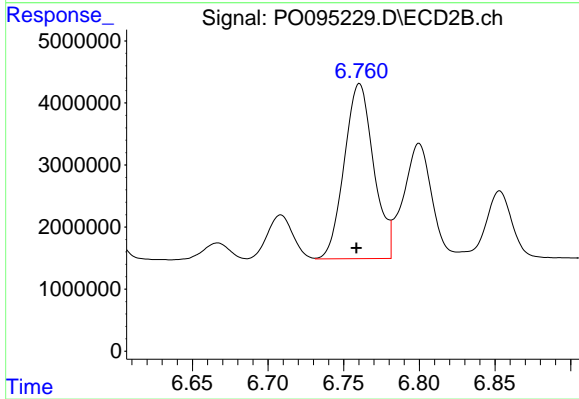
#29 AR-1254-4

R.T.: 6.339 min
 Delta R.T.: 0.002 min
 Response: 2215267
 Conc: 42.65 ng/ml



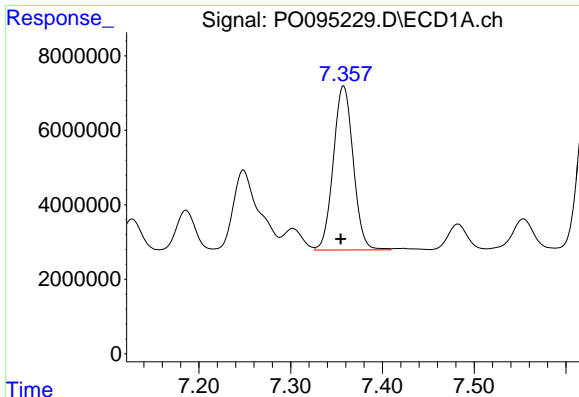
#30 AR-1254-5

R.T.: 7.917 min
 Delta R.T.: 0.000 min
 Response: 101059392
 Conc: 609.79 ng/ml



#30 AR-1254-5

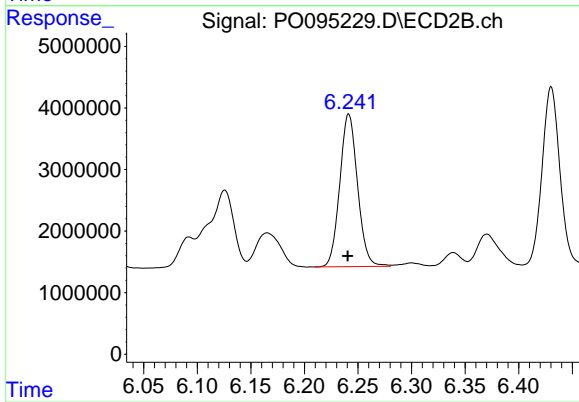
R.T.: 6.760 min
 Delta R.T.: 0.002 min
 Response: 38141540
 Conc: 493.21 ng/ml



#31 AR-1260-1

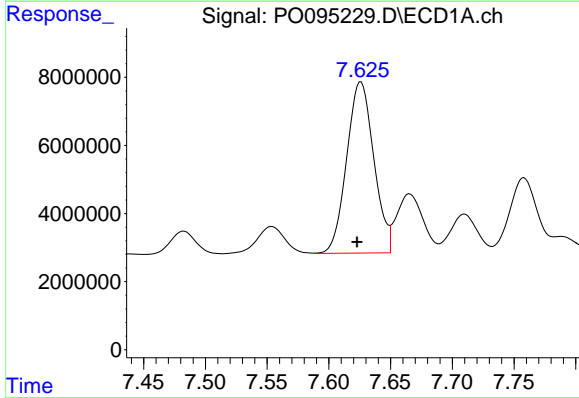
R.T.: 7.358 min
 Delta R.T.: 0.003 min
 Response: 66300312
 Conc: 483.23 ng/ml

Instrument :
 ECD_O
 ClientSampleId :



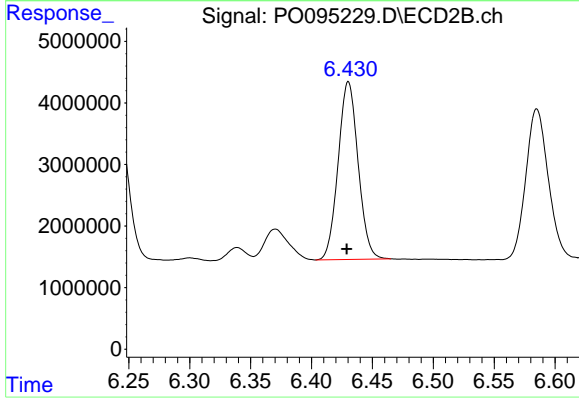
#31 AR-1260-1

R.T.: 6.241 min
 Delta R.T.: 0.001 min
 Response: 28648028
 Conc: 471.15 ng/ml



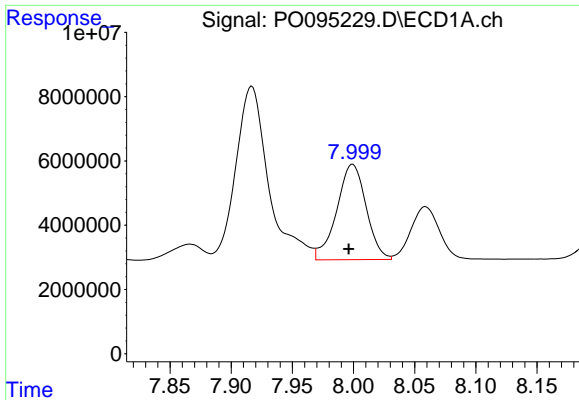
#32 AR-1260-2

R.T.: 7.626 min
 Delta R.T.: 0.003 min
 Response: 76869222
 Conc: 476.92 ng/ml



#32 AR-1260-2

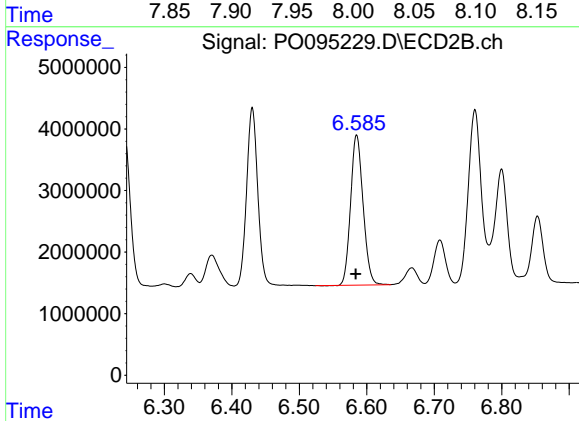
R.T.: 6.430 min
 Delta R.T.: 0.001 min
 Response: 32978827
 Conc: 472.88 ng/ml



#33 AR-1260-3

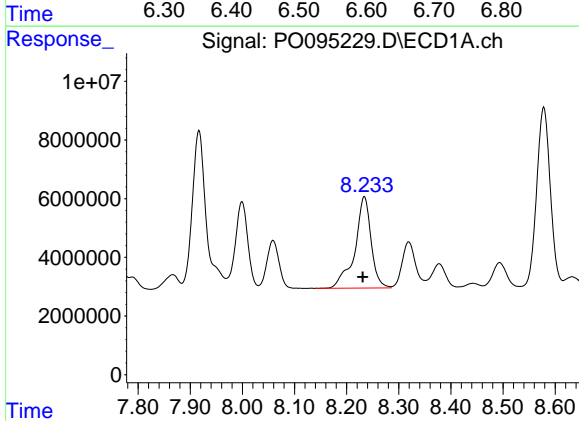
R.T.: 7.999 min
 Delta R.T.: 0.003 min
 Response: 49779614
 Conc: 485.57 ng/ml

Instrument :
 ECD_O
 ClientSampleId :



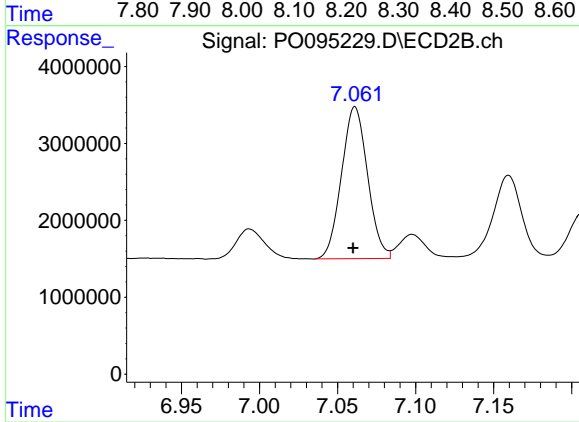
#33 AR-1260-3

R.T.: 6.585 min
 Delta R.T.: 0.001 min
 Response: 31265496
 Conc: 457.53 ng/ml



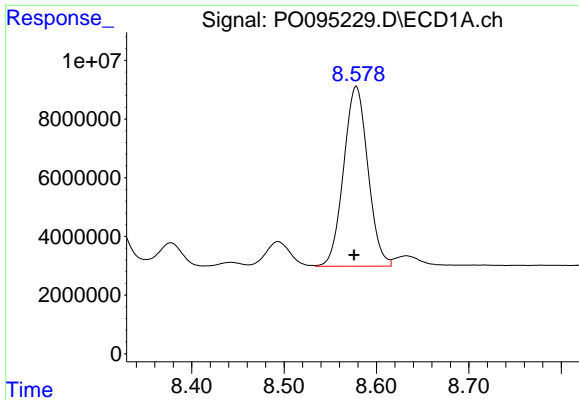
#34 AR-1260-4

R.T.: 8.234 min
 Delta R.T.: 0.003 min
 Response: 67577305
 Conc: 474.25 ng/ml



#34 AR-1260-4

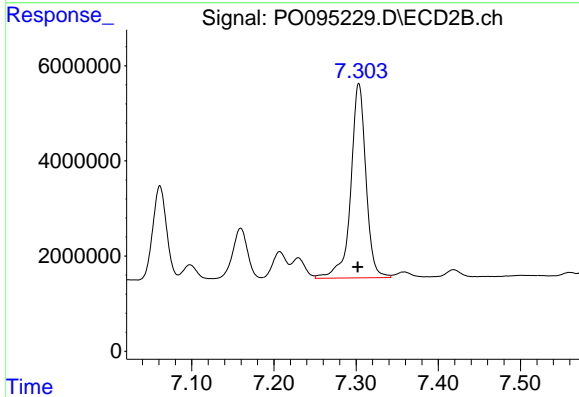
R.T.: 7.061 min
 Delta R.T.: 0.001 min
 Response: 22963136
 Conc: 472.38 ng/ml



#35 AR-1260-5

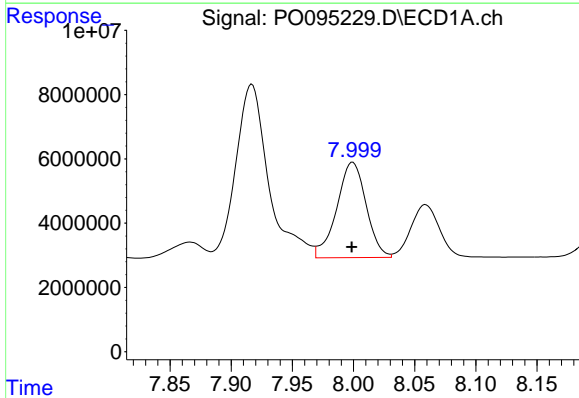
R.T.: 8.578 min
 Delta R.T.: 0.003 min
 Response: 111787443
 Conc: 470.72 ng/ml

Instrument :
 ECD_O
 ClientSampleId :



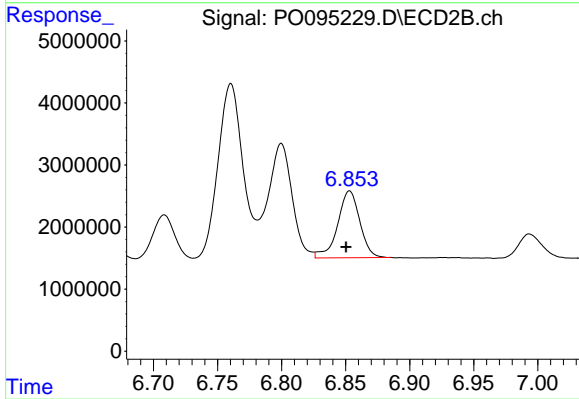
#35 AR-1260-5

R.T.: 7.303 min
 Delta R.T.: 0.001 min
 Response: 52396915
 Conc: 471.05 ng/ml



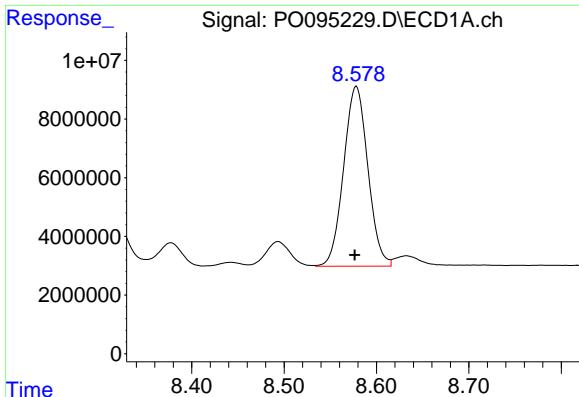
#36 AR-1262-1

R.T.: 7.999 min
 Delta R.T.: 0.000 min
 Response: 49779614
 Conc: 284.56 ng/ml



#36 AR-1262-1

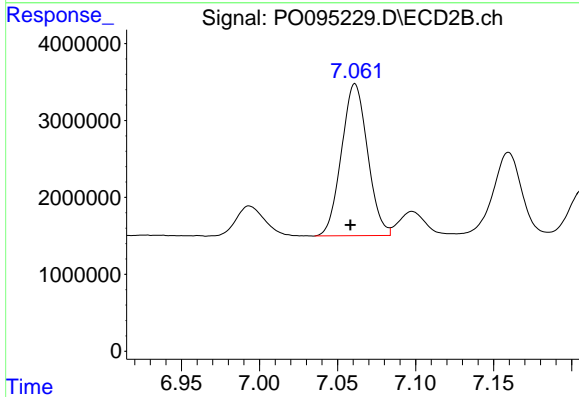
R.T.: 6.853 min
 Delta R.T.: 0.003 min
 Response: 12992969
 Conc: 396.16 ng/ml



#37 AR-1262-2

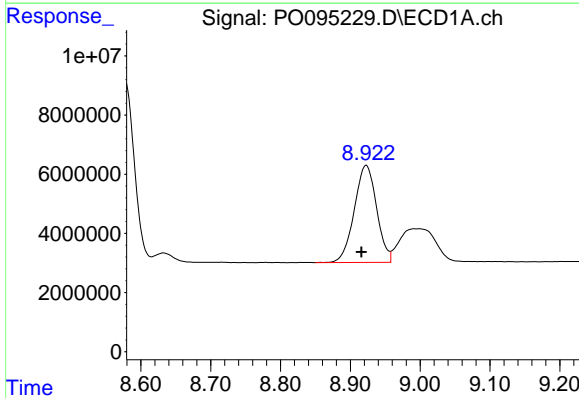
R.T.: 8.578 min
 Delta R.T.: 0.002 min
 Response: 111787443
 Conc: 368.98 ng/ml

Instrument :
 ECD_O
 ClientSampleId :



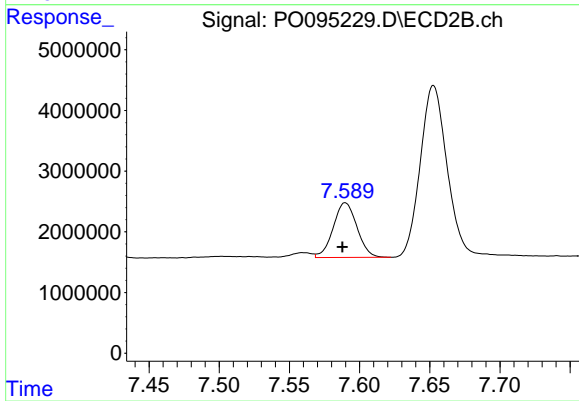
#37 AR-1262-2

R.T.: 7.061 min
 Delta R.T.: 0.003 min
 Response: 22963136
 Conc: 330.11 ng/ml



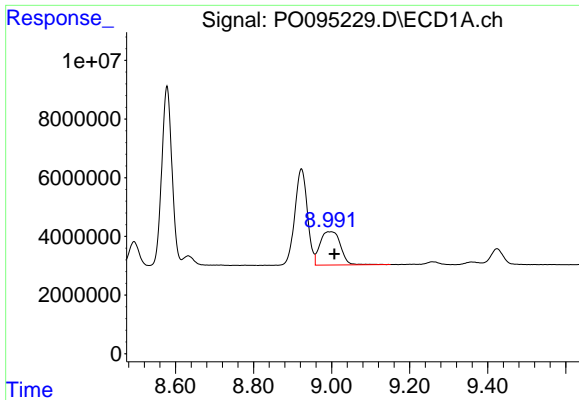
#38 AR-1262-3

R.T.: 8.923 min
 Delta R.T.: 0.007 min
 Response: 73096726
 Conc: 348.45 ng/ml



#38 AR-1262-3

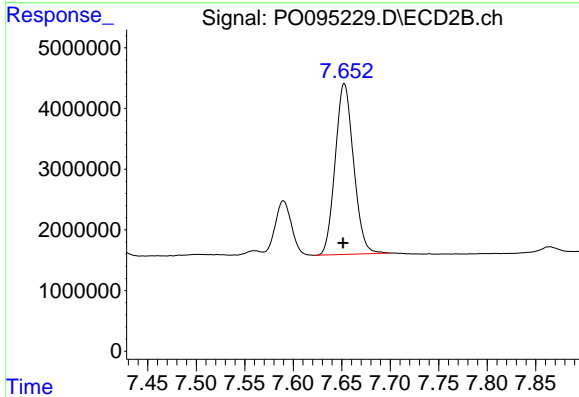
R.T.: 7.590 min
 Delta R.T.: 0.002 min
 Response: 10629275
 Conc: 194.66 ng/ml



#39 AR-1262-4

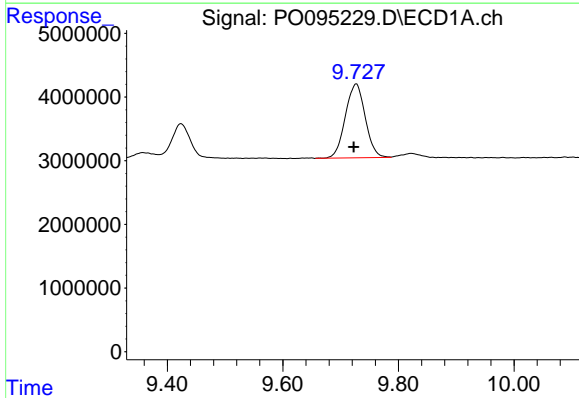
R.T.: 8.992 min
 Delta R.T.: -0.014 min
 Response: 41344874
 Conc: 253.78 ng/ml

Instrument :
 ECD_O
 ClientSampleId :



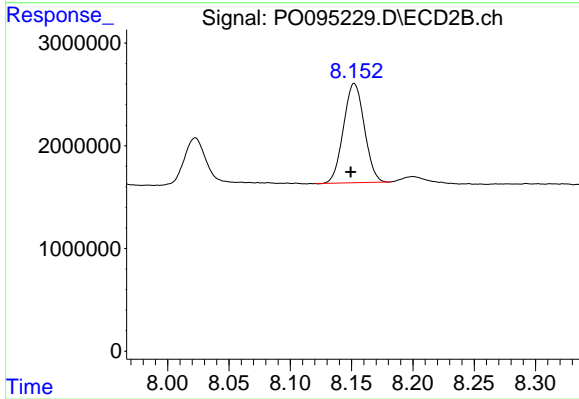
#39 AR-1262-4

R.T.: 7.653 min
 Delta R.T.: 0.001 min
 Response: 37127392
 Conc: 382.09 ng/ml



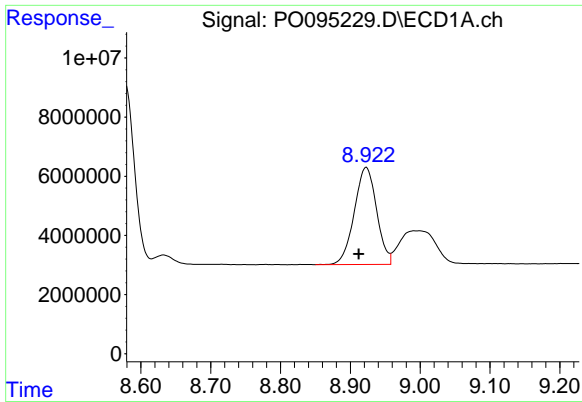
#40 AR-1262-5

R.T.: 9.727 min
 Delta R.T.: 0.004 min
 Response: 27642566
 Conc: 257.67 ng/ml



#40 AR-1262-5

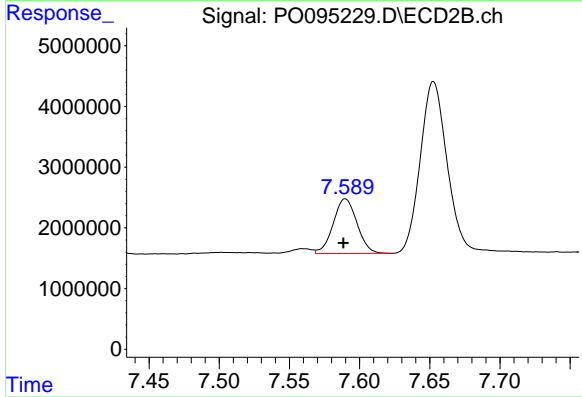
R.T.: 8.152 min
 Delta R.T.: 0.003 min
 Response: 11428008
 Conc: 249.93 ng/ml



#41 AR-1268-1

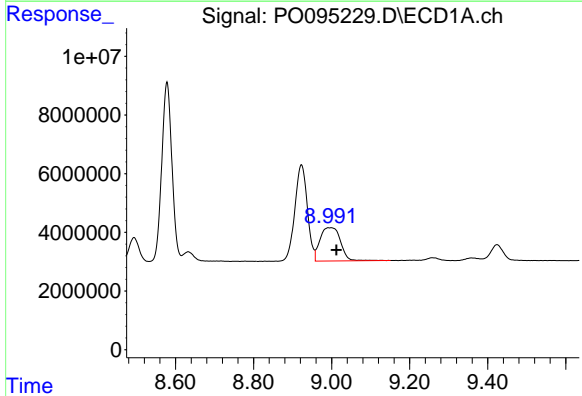
R.T.: 8.923 min
 Delta R.T.: 0.011 min
 Response: 73096726
 Conc: 206.07 ng/ml

Instrument :
 ECD_O
 ClientSampleId :



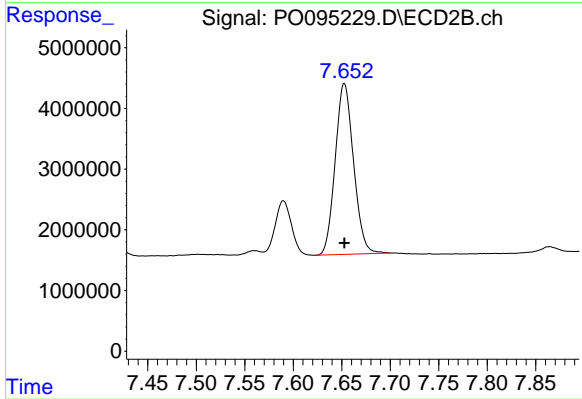
#41 AR-1268-1

R.T.: 7.590 min
 Delta R.T.: 0.002 min
 Response: 10629275
 Conc: 69.68 ng/ml



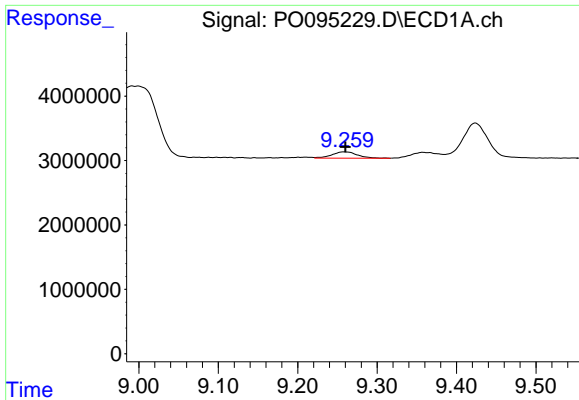
#42 AR-1268-2

R.T.: 8.992 min
 Delta R.T.: -0.020 min
 Response: 41344874
 Conc: 127.48 ng/ml



#42 AR-1268-2

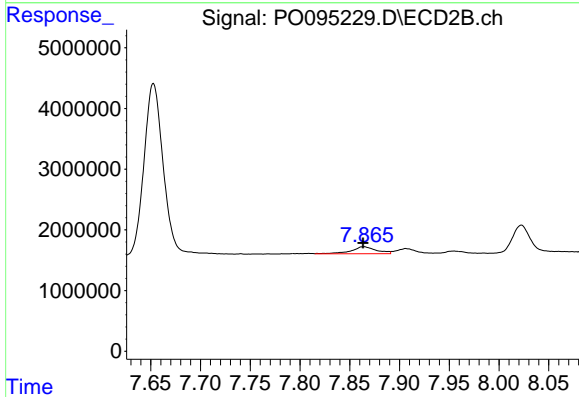
R.T.: 7.653 min
 Delta R.T.: 0.000 min
 Response: 37127392
 Conc: 272.00 ng/ml



#43 AR-1268-3

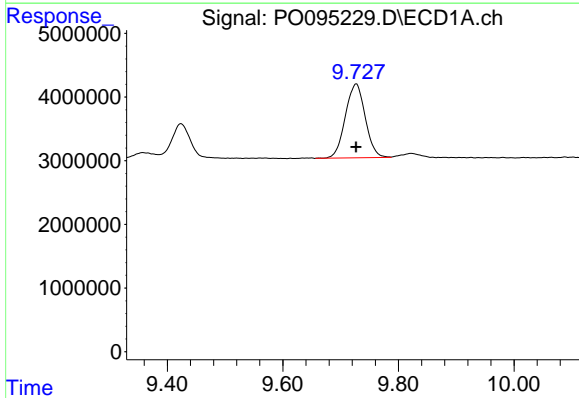
R.T.: 9.259 min
 Delta R.T.: -0.001 min
 Response: 2164682
 Conc: 7.83 ng/ml

Instrument :
 ECD_O
 ClientSampleId :



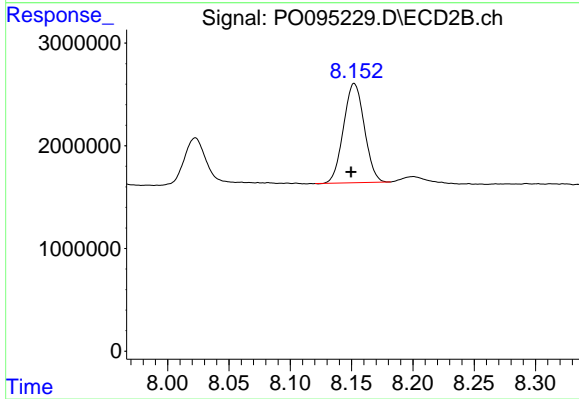
#43 AR-1268-3

R.T.: 7.864 min
 Delta R.T.: 0.000 min
 Response: 2009509
 Conc: 16.69 ng/ml



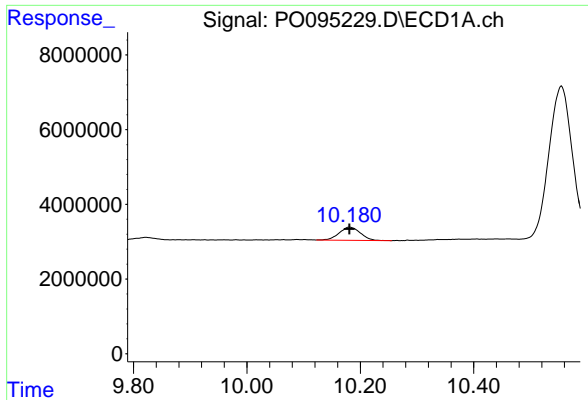
#44 AR-1268-4

R.T.: 9.727 min
 Delta R.T.: 0.000 min
 Response: 27642566
 Conc: 233.92 ng/ml



#44 AR-1268-4

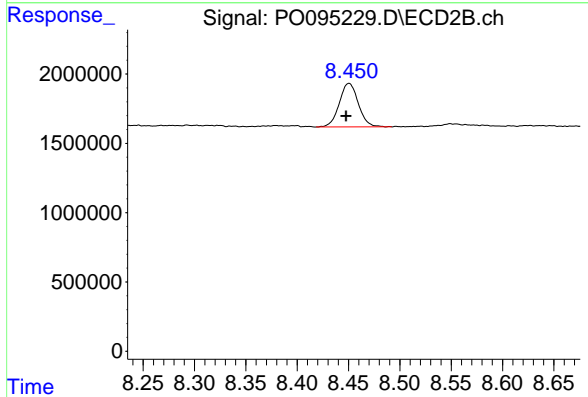
R.T.: 8.152 min
 Delta R.T.: 0.003 min
 Response: 11428008
 Conc: 225.88 ng/ml



#45 AR-1268-5

R.T.: 10.181 min
 Delta R.T.: 0.000 min
 Response: 9189286
 Conc: 10.40 ng/ml

Instrument :
 ECD_O
 ClientSampleId :



#45 AR-1268-5

R.T.: 8.450 min
 Delta R.T.: 0.003 min
 Response: 4050357
 Conc: 11.71 ng/ml