

Data Path : Z:\pestpcbsrv\HPCHEM1\ECD\_O\Data\P0052223\  
 Data File : P0095222.D  
 Signal(s) : Signal #1: ECD1A.ch Signal #2: ECD2B.ch  
 Acq On : 22 May 2023 11:45  
 Operator : YP/AJ  
 Sample : 02850-06  
 Misc :  
 ALS Vial : 11 Sample Multiplier: 1

Instrument :  
 ECD\_O  
 ClientSampleId :  
 TRE-1741

Integration File signal 1: autoint1.e  
 Integration File signal 2: autoint2.e  
 Quant Time: May 22 21:44:36 2023  
 Quant Method : Z:\pestpcbsrv\HPCHEM1\ECD\_O\methods\P0051823.M  
 Quant Title : GC EXTRACTABLES  
 QLast Update : Fri May 19 06:20:17 2023  
 Response via : Initial Calibration  
 Integrator: ChemStation

Volume Inj. : 2 µl  
 Signal #1 Phase : ZB-MR1 Signal #2 Phase: ZB-MR2  
 Signal #1 Info : 30Mx0.32mmx 0.50µ Signal #2 Info : 30M x 0.32mm x 0.25µm

Compound	RT#1	RT#2	Resp#1	Resp#2	ng/ml	ng/ml
-----						
System Monitoring Compounds						
1) SA Tetrachlo...	4.497	3.654	20923997	10624905	7.181	9.357 #
2) SA Decachlor...	10.555	8.717	12845555	5076352	5.536	5.234

Target Compounds

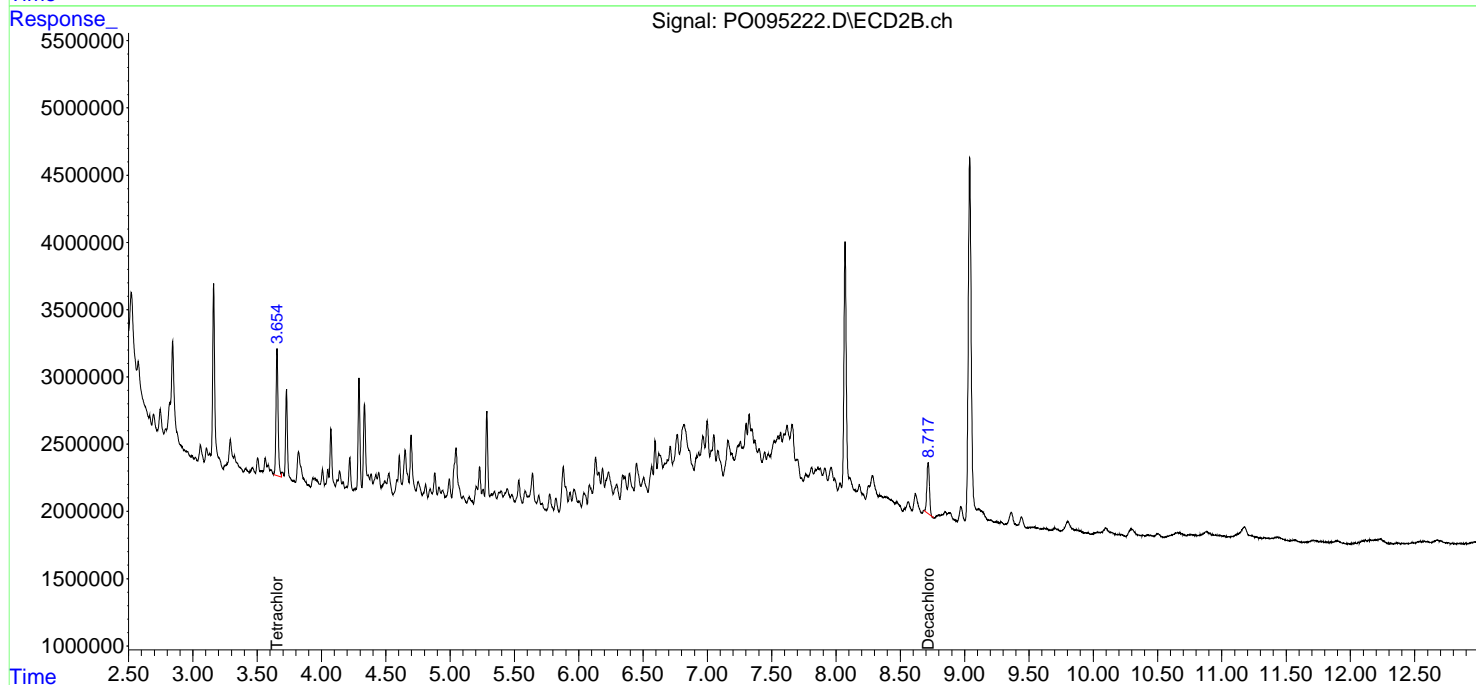
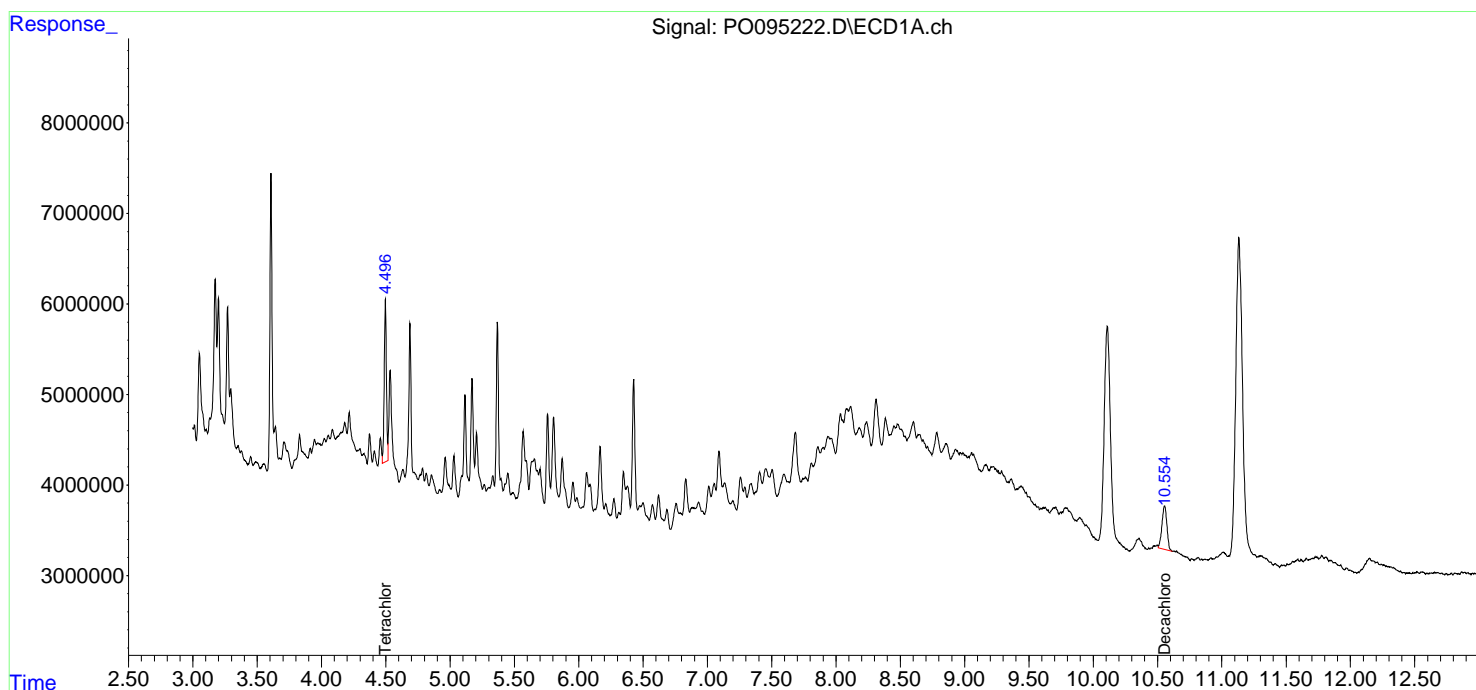
(f)=RT Delta > 1/2 Window (#)=Amounts differ by > 25% (m)=manual int.

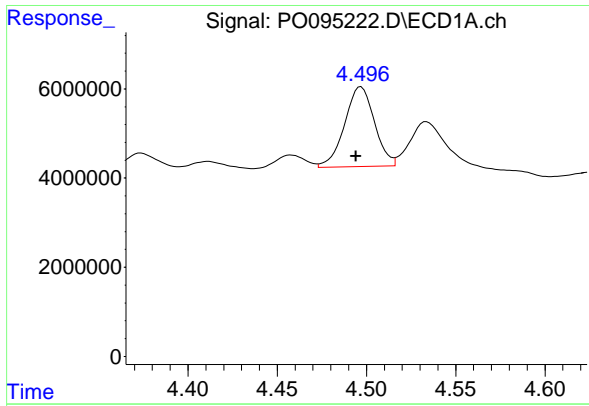
Data Path : Z:\pestpcbsrv\HPCHEM1\ECD\_O\Data\PO052223\  
 Data File : PO095222.D  
 Signal(s) : Signal #1: ECD1A.ch Signal #2: ECD2B.ch  
 Acq On : 22 May 2023 11:45  
 Operator : YP/AJ  
 Sample : 02850-06  
 Misc :  
 ALS Vial : 11 Sample Multiplier: 1

Instrument :  
 ECD\_O  
 ClientSampleId :  
 TRE-1741

Integration File signal 1: autoint1.e  
 Integration File signal 2: autoint2.e  
 Quant Time: May 22 21:44:36 2023  
 Quant Method : Z:\pestpcbsrv\HPCHEM1\ECD\_O\methods\PO051823.M  
 Quant Title : GC EXTRACTABLES  
 QLast Update : Fri May 19 06:20:17 2023  
 Response via : Initial Calibration  
 Integrator: ChemStation

Volume Inj. : 2 µl  
 Signal #1 Phase : ZB-MR1 Signal #2 Phase: ZB-MR2  
 Signal #1 Info : 30Mx0.32mmx 0.50µm Signal #2 Info : 30M x 0.32mm x 0.25µm

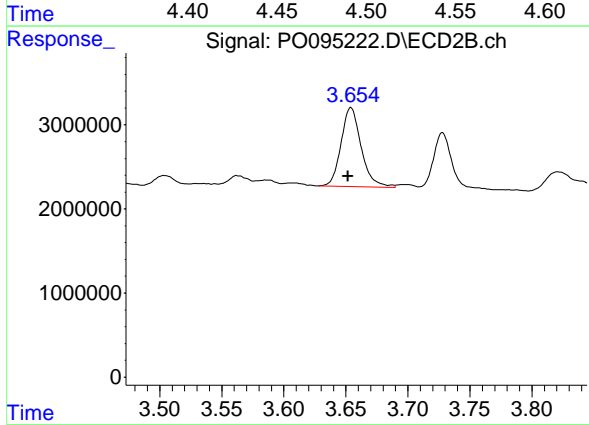




#1 Tetrachloro-m-xylene

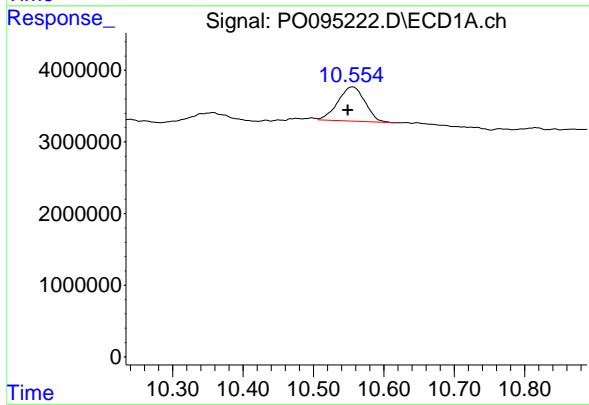
R.T.: 4.497 min  
 Delta R.T.: 0.003 min  
 Response: 20923997  
 Conc: 7.18 ng/ml

Instrument :  
 ECD\_O  
 ClientSampleId :  
 TRE-1741



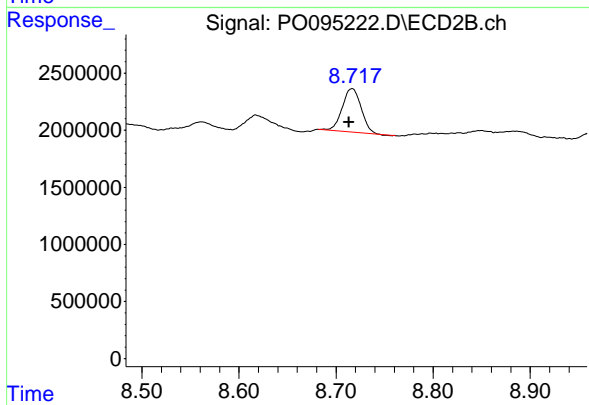
#1 Tetrachloro-m-xylene

R.T.: 3.654 min  
 Delta R.T.: 0.002 min  
 Response: 10624905  
 Conc: 9.36 ng/ml



#2 Decachlorobiphenyl

R.T.: 10.555 min  
 Delta R.T.: 0.006 min  
 Response: 12845555  
 Conc: 5.54 ng/ml



#2 Decachlorobiphenyl

R.T.: 8.717 min  
 Delta R.T.: 0.003 min  
 Response: 5076352  
 Conc: 5.23 ng/ml