

Data Path : Z:\pestpcbsrv\HPCHEM1\ECD_O\Data\P0052223\
 Data File : P0095223.D
 Signal(s) : Signal #1: ECD1A.ch Signal #2: ECD2B.ch
 Acq On : 22 May 2023 12:02
 Operator : YP/AJ
 Sample : PB152900BL
 Misc :
 ALS Vial : 12 Sample Multiplier: 1

Instrument :
 ECD_O
ClientSampleId :
 PB152900BL

Integration File signal 1: autoint1.e
 Integration File signal 2: autoint2.e
 Quant Time: May 22 21:46:14 2023
 Quant Method : Z:\pestpcbsrv\HPCHEM1\ECD_O\methods\P0051823.M
 Quant Title : GC EXTRACTABLES
 QLast Update : Fri May 19 06:20:17 2023
 Response via : Initial Calibration
 Integrator: ChemStation

Volume Inj. : 2 µl
 Signal #1 Phase : ZB-MR1 Signal #2 Phase: ZB-MR2
 Signal #1 Info : 30Mx0.32mmx 0.50µ Signal #2 Info : 30M x 0.32mm x 0.25µm

Compound	RT#1	RT#2	Resp#1	Resp#2	ng/ml	ng/ml

System Monitoring Compounds						
1) SA Tetrachlo...	4.496	3.652	55970259	22440240	19.209	19.762
2) SA Decachlor...	10.552	8.714	38008608	17759442	16.380	18.312

Target Compounds

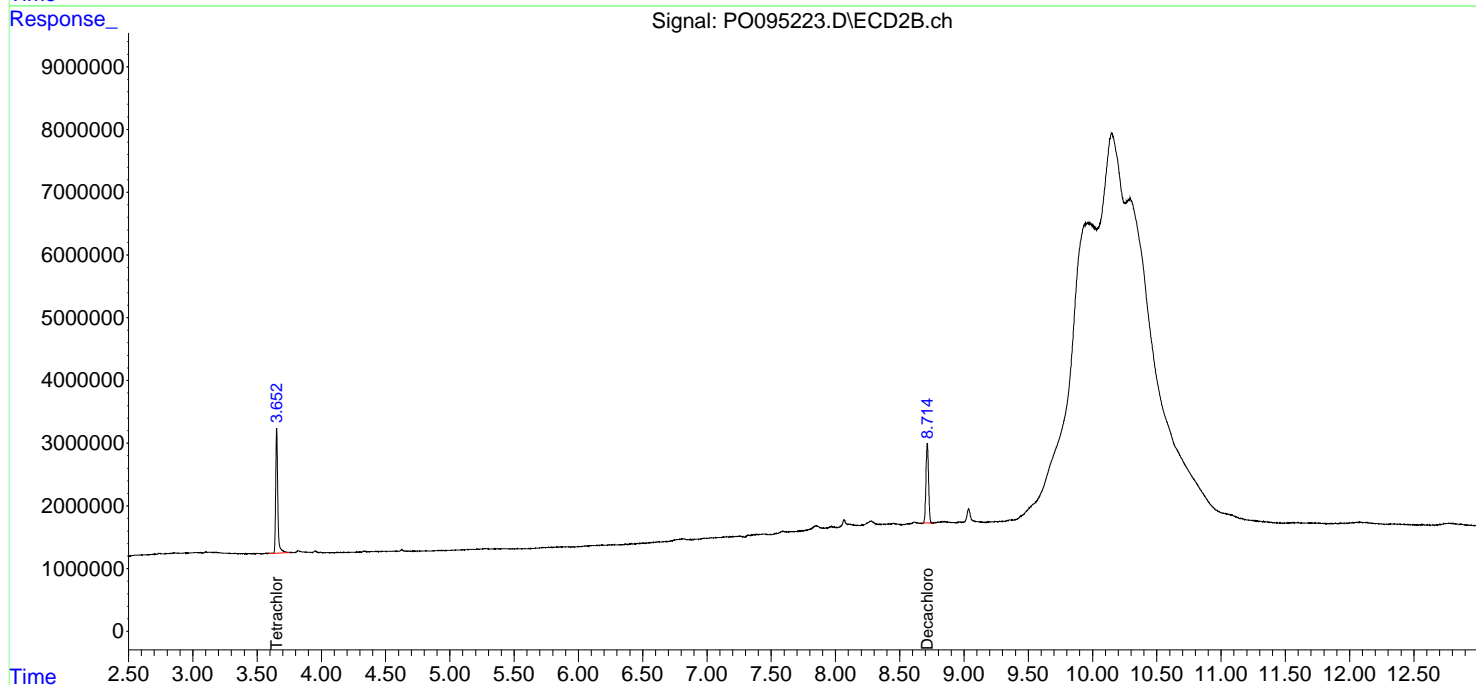
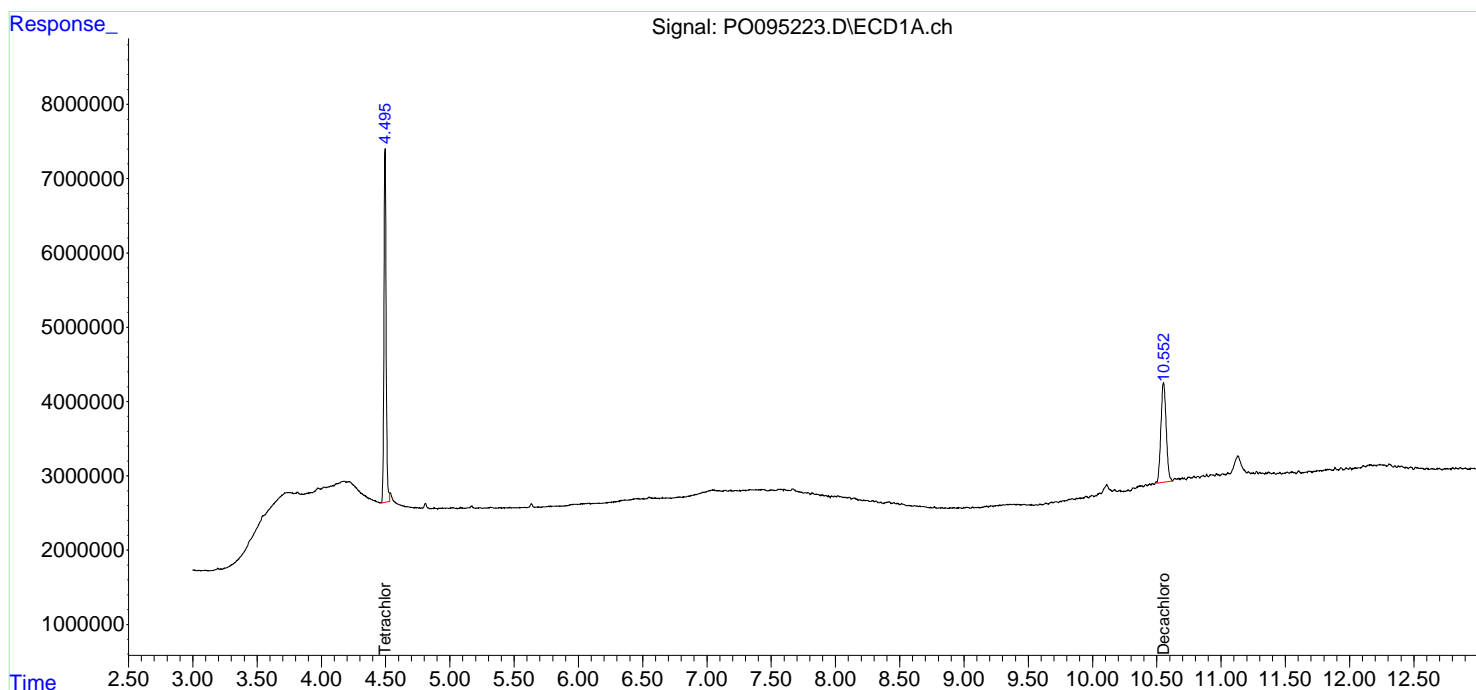
 (f)=RT Delta > 1/2 Window (#)=Amounts differ by > 25% (m)=manual int.

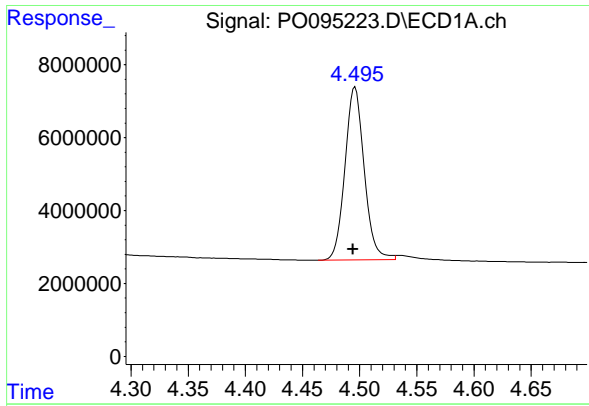
Data Path : Z:\pestpcbsrv\HPCHEM1\ECD_O\Data\PO052223\
 Data File : PO095223.D
 Signal(s) : Signal #1: ECD1A.ch Signal #2: ECD2B.ch
 Acq On : 22 May 2023 12:02
 Operator : YP/AJ
 Sample : PB152900BL
 Misc :
 ALS Vial : 12 Sample Multiplier: 1

Instrument :
 ECD_O
 ClientSampleId :
 PB152900BL

Integration File signal 1: autoint1.e
 Integration File signal 2: autoint2.e
 Quant Time: May 22 21:46:14 2023
 Quant Method : Z:\pestpcbsrv\HPCHEM1\ECD_O\methods\PO051823.M
 Quant Title : GC EXTRACTABLES
 QLast Update : Fri May 19 06:20:17 2023
 Response via : Initial Calibration
 Integrator: ChemStation

Volume Inj. : 2 µl
 Signal #1 Phase : ZB-MR1 Signal #2 Phase: ZB-MR2
 Signal #1 Info : 30Mx0.32mmx 0.50µm Signal #2 Info : 30M x 0.32mm x 0.25µm

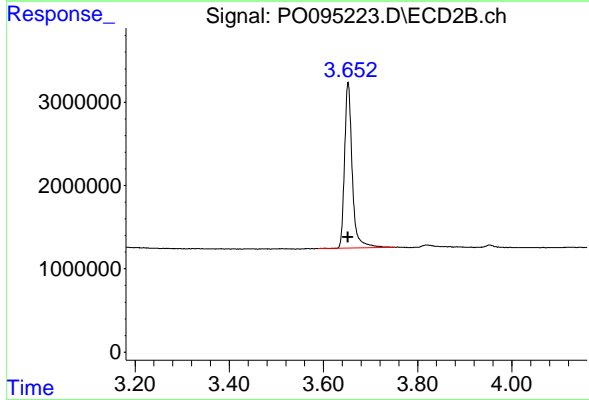




#1 Tetrachloro-m-xylene

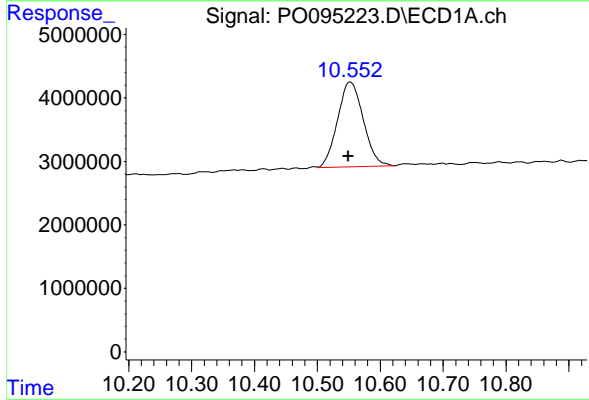
R.T.: 4.496 min
 Delta R.T.: 0.002 min
 Response: 55970259
 Conc: 19.21 ng/ml

Instrument :
 ECD_O
 ClientSampleId :
 PB152900BL



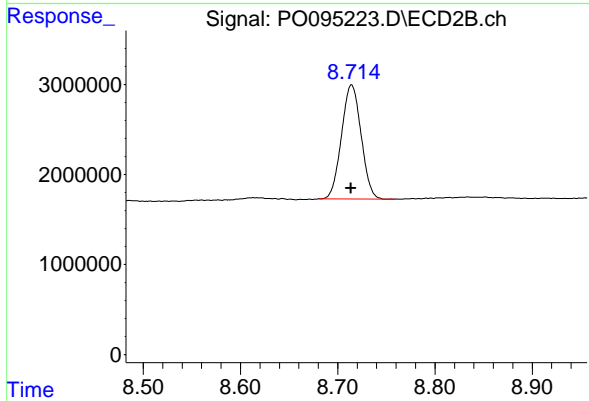
#1 Tetrachloro-m-xylene

R.T.: 3.652 min
 Delta R.T.: 0.000 min
 Response: 22440240
 Conc: 19.76 ng/ml



#2 Decachlorobiphenyl

R.T.: 10.552 min
 Delta R.T.: 0.003 min
 Response: 38008608
 Conc: 16.38 ng/ml



#2 Decachlorobiphenyl

R.T.: 8.714 min
 Delta R.T.: 0.000 min
 Response: 17759442
 Conc: 18.31 ng/ml