

Data Path : Z:\pestpcbsrv\HPCHEM1\ECD_O\Data\P0052223\
 Data File : P0095230.D
 Signal(s) : Signal #1: ECD1A.ch Signal #2: ECD2B.ch
 Acq On : 22 May 2023 14:48
 Operator : YP/AJ
 Sample : AR1242CCC500
 Misc :
 ALS Vial : 4 Sample Multiplier: 1

Instrument :
 ECD_O
ClientSampleId :
 AR1242CCC500

Integration File signal 1: autoint1.e
 Integration File signal 2: autoint2.e
 Quant Time: May 22 21:56:32 2023
 Quant Method : Z:\pestpcbsrv\HPCHEM1\ECD_O\methods\P0051823.M
 Quant Title : GC EXTRACTABLES
 QLast Update : Fri May 19 06:20:17 2023
 Response via : Initial Calibration
 Integrator: ChemStation

Volume Inj. : 2 µl
 Signal #1 Phase : ZB-MR1 Signal #2 Phase: ZB-MR2
 Signal #1 Info : 30Mx0.32mmx 0.50µ Signal #2 Info : 30M x 0.32mm x 0.25µm

Compound	RT#1	RT#2	Resp#1	Resp#2	ng/ml	ng/ml

System Monitoring Compounds						
1) SA Tetrachlo...	4.497	3.653	145.7E6	58845215	49.994	51.823
2) SA Decachlor...	10.553	8.714	117.7E6	46013578	50.711	47.445
Target Compounds						
16) L4 AR-1242-1	5.700	4.746	38360101	15244022	480.911	498.452
17) L4 AR-1242-2	5.722	4.766	54733972	21039657	478.842	495.454
18) L4 AR-1242-3	5.786	4.943	35507680	12032149	485.121	516.445
19) L4 AR-1242-4	5.887	5.028	28619005	12394699	492.829	503.352
20) L4 AR-1242-5	6.647	5.554	28809651	14846984	493.303	500.232

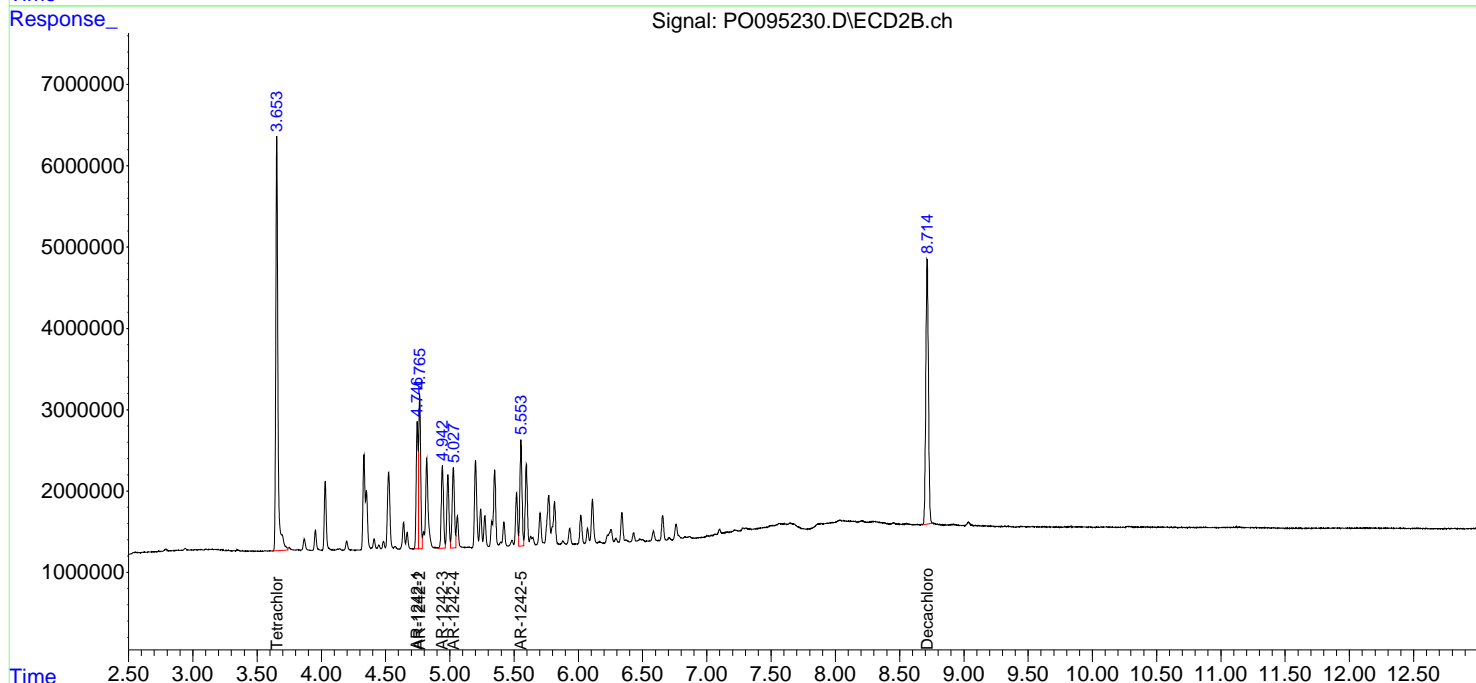
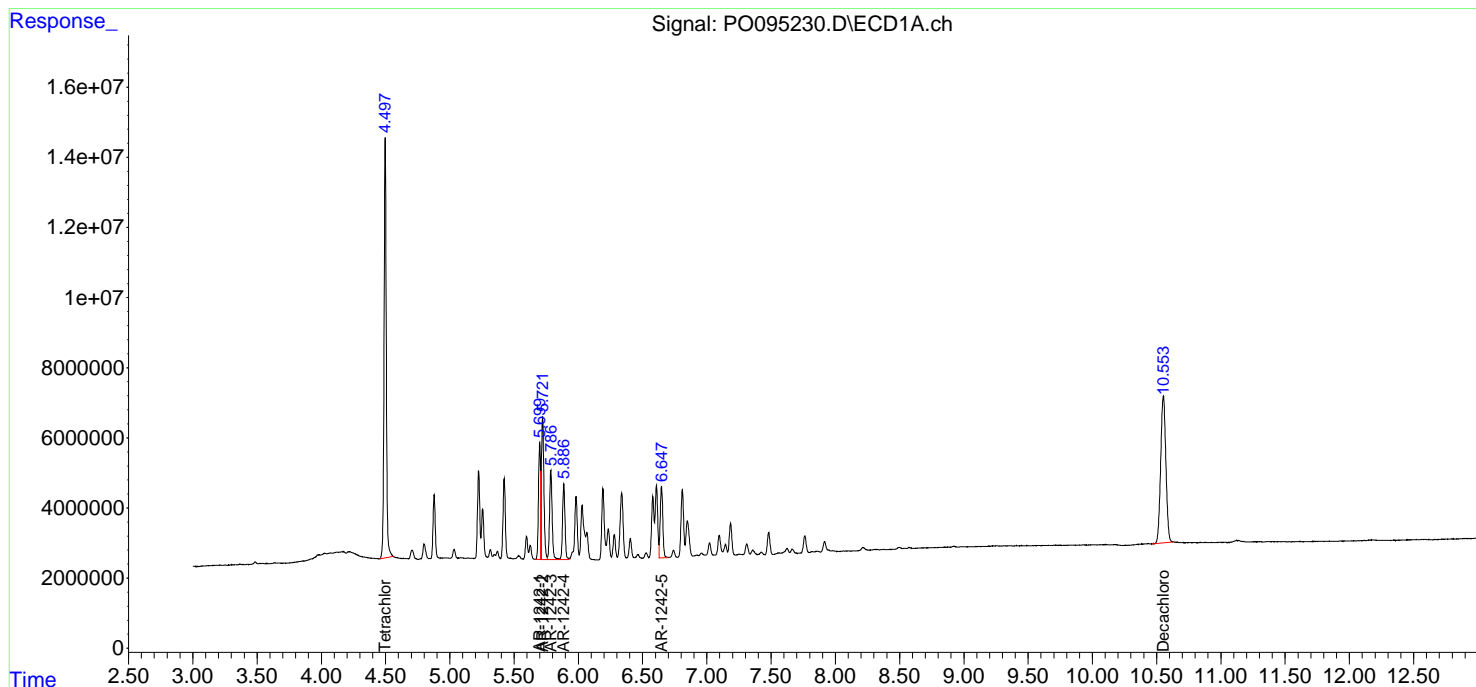
(f)=RT Delta > 1/2 Window (#)=Amounts differ by > 25% (m)=manual int.

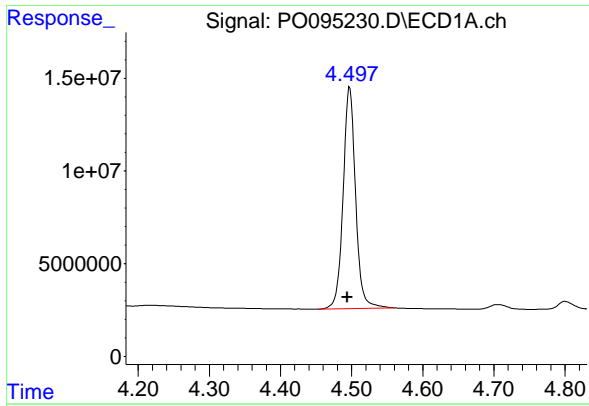
Data Path : Z:\pestpcbsrv\HPCHEM1\ECD_O\Data\PO052223\
Data File : PO095230.D
Signal(s) : Signal #1: ECD1A.ch Signal #2: ECD2B.ch
Acq On : 22 May 2023 14:48
Operator : YP/AJ
Sample : AR1242CCC500
Misc :
ALS Vial : 4 Sample Multiplier: 1

Instrument :
ECD_O
ClientSampleId :
AR1242CCC500

Integration File signal 1: autoint1.e
Integration File signal 2: autoint2.e
Quant Time: May 22 21:56:32 2023
Quant Method : Z:\pestpcbsrv\HPCHEM1\ECD_O\methods\PO051823.M
Quant Title : GC EXTRACTABLES
QLast Update : Fri May 19 06:20:17 2023
Response via : Initial Calibration
Integrator: ChemStation

Volume Inj. : 2 µl
Signal #1 Phase : ZB-MR1 Signal #2 Phase: ZB-MR2
Signal #1 Info : 30Mx0.32mmx 0.50µm Signal #2 Info : 30M x 0.32mm x 0.25µm

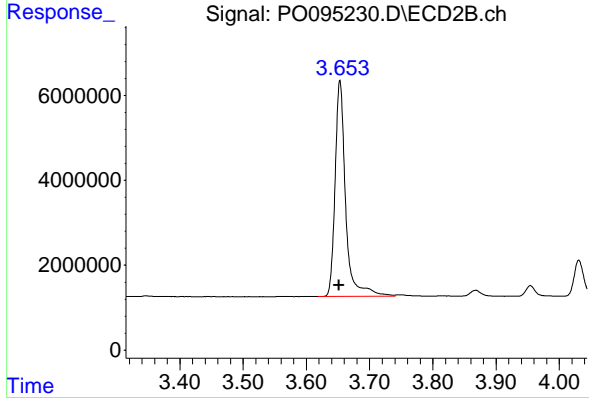




#1 Tetrachloro-m-xylene

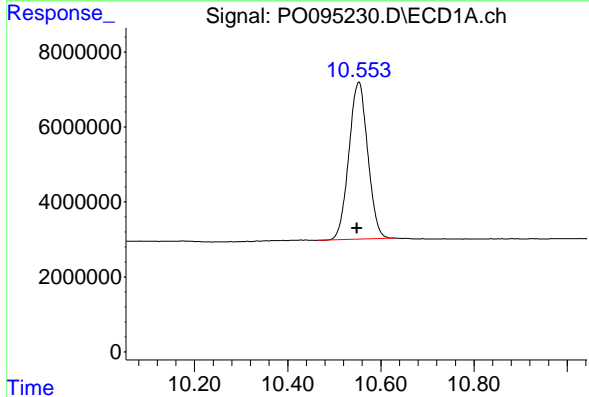
R.T.: 4.497 min
 Delta R.T.: 0.003 min
 Response: 145674754
 Conc: 49.99 ng/ml

Instrument :
 ECD_O
 ClientSampleId :
 AR1242CCC500



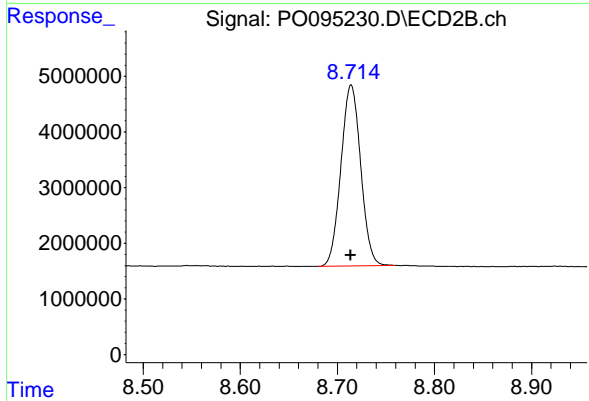
#1 Tetrachloro-m-xylene

R.T.: 3.653 min
 Delta R.T.: 0.001 min
 Response: 58845215
 Conc: 51.82 ng/ml



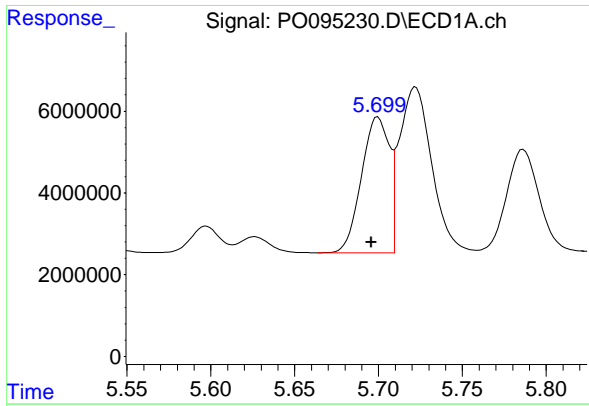
#2 Decachlorobiphenyl

R.T.: 10.553 min
 Delta R.T.: 0.004 min
 Response: 117673725
 Conc: 50.71 ng/ml



#2 Decachlorobiphenyl

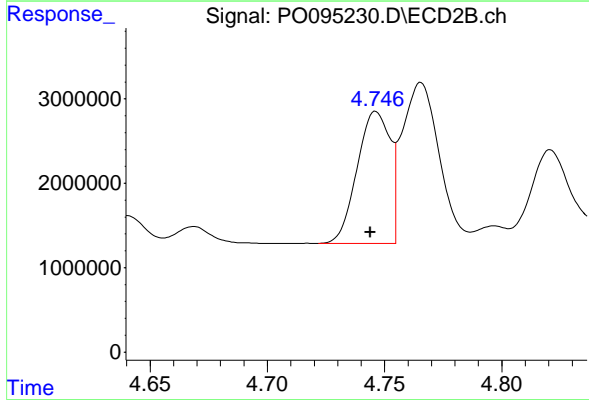
R.T.: 8.714 min
 Delta R.T.: 0.000 min
 Response: 46013578
 Conc: 47.45 ng/ml



#16 AR-1242-1

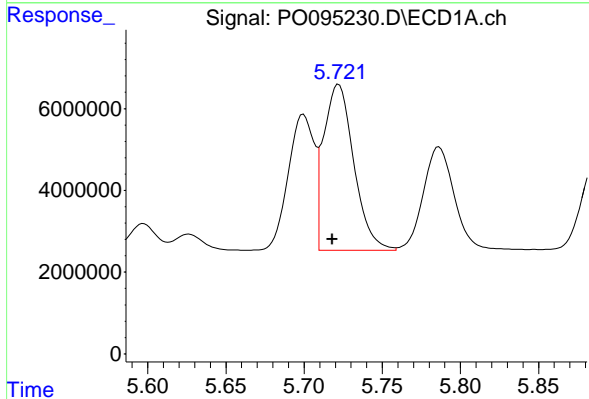
R.T.: 5.700 min
 Delta R.T.: 0.004 min
 Response: 38360101
 Conc: 480.91 ng/ml

Instrument :
 ECD_O
 ClientSampleId :
 AR1242CCC500



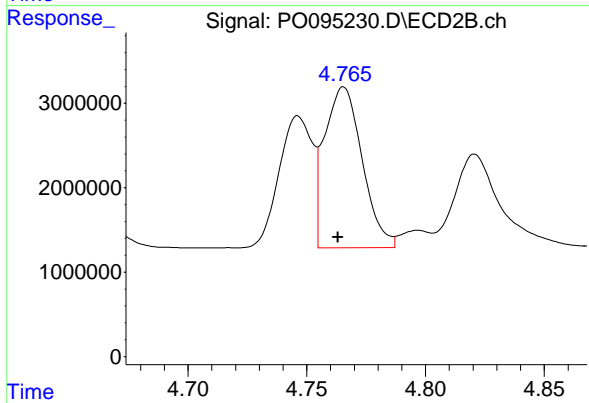
#16 AR-1242-1

R.T.: 4.746 min
 Delta R.T.: 0.002 min
 Response: 15244022
 Conc: 498.45 ng/ml



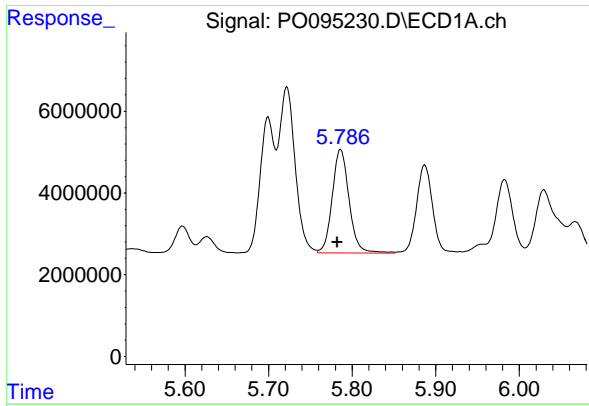
#17 AR-1242-2

R.T.: 5.722 min
 Delta R.T.: 0.004 min
 Response: 54733972
 Conc: 478.84 ng/ml



#17 AR-1242-2

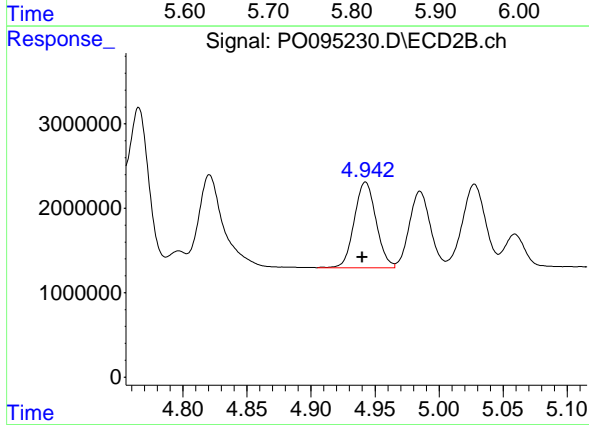
R.T.: 4.766 min
 Delta R.T.: 0.002 min
 Response: 21039657
 Conc: 495.45 ng/ml



#18 AR-1242-3

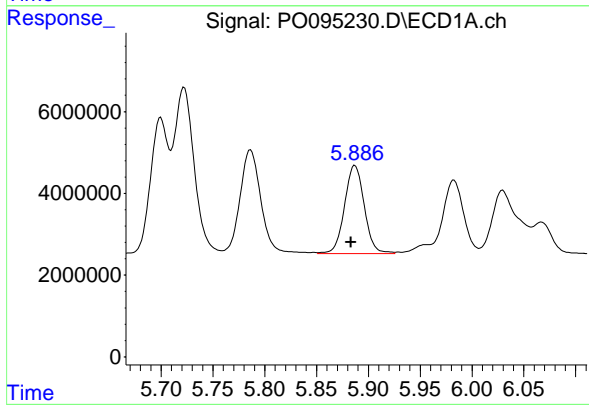
R.T.: 5.786 min
 Delta R.T.: 0.004 min
 Response: 35507680
 Conc: 485.12 ng/ml

Instrument :
 ECD_O
 ClientSampleId :
 AR1242CCC500



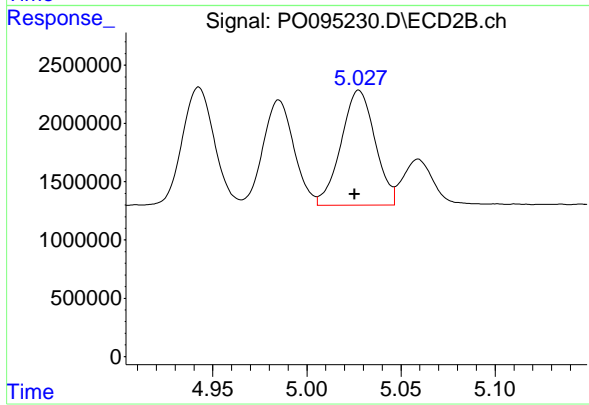
#18 AR-1242-3

R.T.: 4.943 min
 Delta R.T.: 0.003 min
 Response: 12032149
 Conc: 516.44 ng/ml



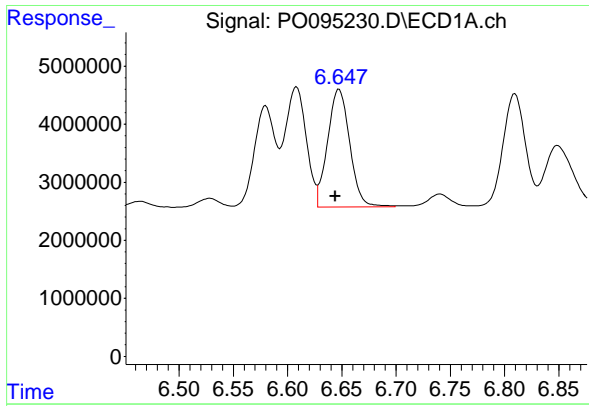
#19 AR-1242-4

R.T.: 5.887 min
 Delta R.T.: 0.004 min
 Response: 28619005
 Conc: 492.83 ng/ml



#19 AR-1242-4

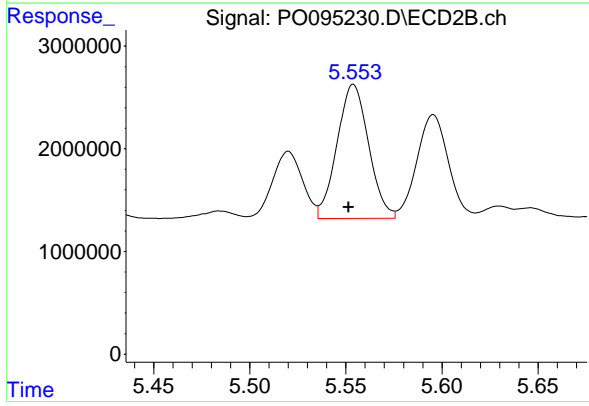
R.T.: 5.028 min
 Delta R.T.: 0.002 min
 Response: 12394699
 Conc: 503.35 ng/ml



#20 AR-1242-5

R.T.: 6.647 min
 Delta R.T.: 0.003 min
 Response: 28809651
 Conc: 493.30 ng/ml

Instrument :
 ECD_O
 ClientSampleId :
 AR1242CCC500



#20 AR-1242-5

R.T.: 5.554 min
 Delta R.T.: 0.002 min
 Response: 14846984
 Conc: 500.23 ng/ml