

Data Path : Z:\pestpcbsrv\HPCHEM1\ECD_0\Data\P0052225\
 Data File : P0111285.D
 Signal(s) : Signal #1: ECD1A.ch Signal #2: ECD2B.ch
 Acq On : 22 May 2025 13:48
 Operator : YP/AJ
 Sample : Q2100-03MS
 Misc :
 ALS Vial : 14 Sample Multiplier: 1

Instrument :
 ECD_0
ClientSampleId :
 TP-21MS

Manual Integrations
APPROVED
 Reviewed By :Yogesh Patel 05/23/2025
 Supervised By :mohammad ahmed 05/24/2025

Integration File signal 1: autoint1.e
 Integration File signal 2: autoint2.e
 Quant Time: May 22 15:14:23 2025
 Quant Method : Z:\pestpcbsrv\HPCHEM1\ECD_0\methods\P0051525.M
 Quant Title : GC EXTRACTABLES
 QLast Update : Thu May 15 07:11:53 2025
 Response via : Initial Calibration
 Integrator: ChemStation

Volume Inj. : 2 µl
 Signal #1 Phase : ZB-MR1 Signal #2 Phase: ZB-MR2
 Signal #1 Info : 30Mx0.32mmx 0.50µ Signal #2 Info : 30M x 0.32mm x 0.25µm

Compound	RT#1	RT#2	Resp#1	Resp#2	ng/ml	ng/ml

System Monitoring Compounds						
1) SA Tetrachlo...	3.681	3.677	113.3E6	96330487	19.251	17.671
2) SA Decachlor...	8.723	8.672	81060470	33566078	15.701	18.142
Target Compounds						
3) L1 AR-1016-1	4.770	4.757	90952318	76074943	404.132m	398.450
4) L1 AR-1016-2	4.789	4.775	123.5E6	109.5E6	387.382m	395.197
5) L1 AR-1016-3	4.846	4.951	83555968	56436967	384.831m	386.356
6) L1 AR-1016-4	4.966	4.993	67052760	45393664	385.033m	378.001
7) L1 AR-1016-5	5.224	5.206	66403354	54887635	377.310	355.489
31) L7 AR-1260-1	6.265	6.237	125.5E6	94555739	411.566	378.392
32) L7 AR-1260-2	6.453	6.424	141.6E6	106.1E6	369.698	360.609
33) L7 AR-1260-3	6.821	6.577	99664028	94045071	285.908	328.005
34) L7 AR-1260-4	7.080	7.048	83613163	60952880	298.659	303.606
35) L7 AR-1260-5	7.323	7.290	211.9E6	137.3E6	294.358	298.708

(f)=RT Delta > 1/2 Window (#)=Amounts differ by > 25% (m)=manual int.

Data Path : Z:\pestpcbsrv\HPCHEM1\ECD_O\Data\PO052225\
 Data File : PO111285.D
 Signal(s) : Signal #1: ECD1A.ch Signal #2: ECD2B.ch
 Acq On : 22 May 2025 13:48
 Operator : YP/AJ
 Sample : Q2100-03MS
 Misc :
 ALS Vial : 14 Sample Multiplier: 1

Instrument :

ECD_O

ClientSampleId :

TP-21MS

Manual Integrations

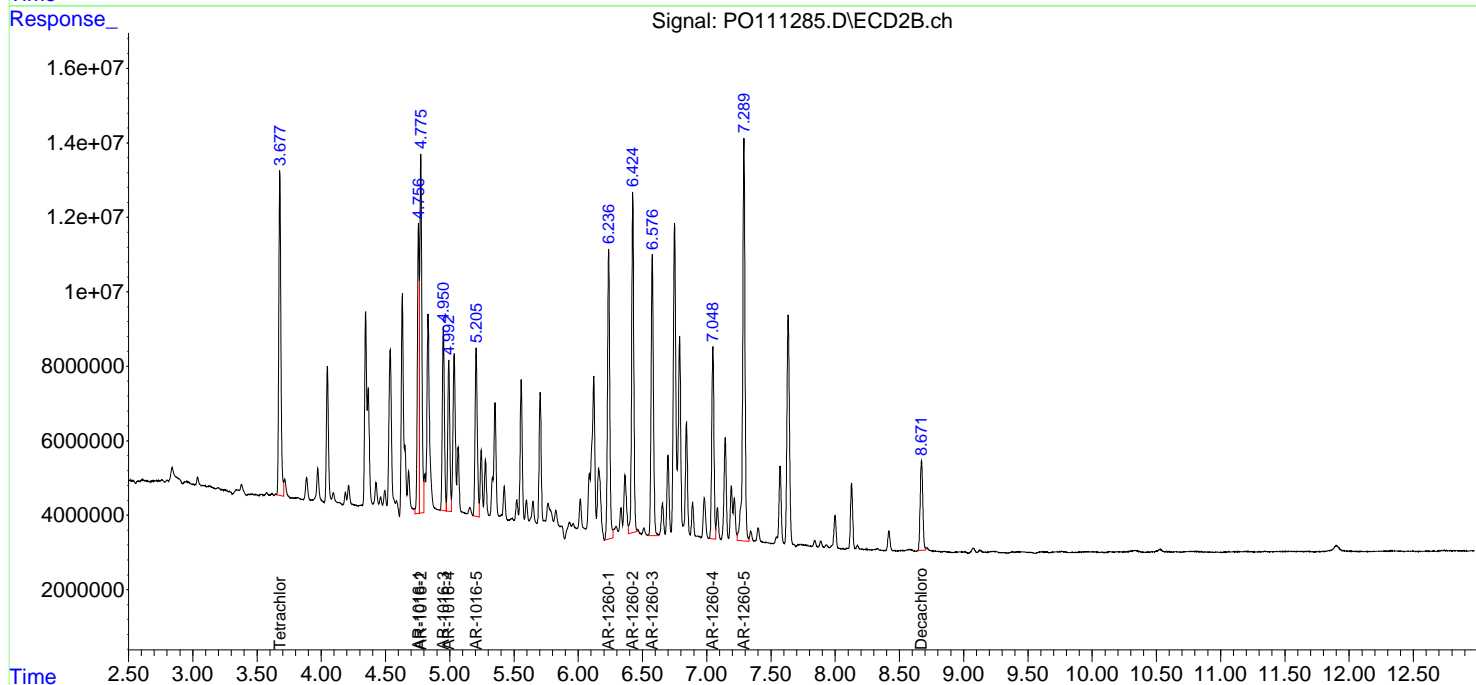
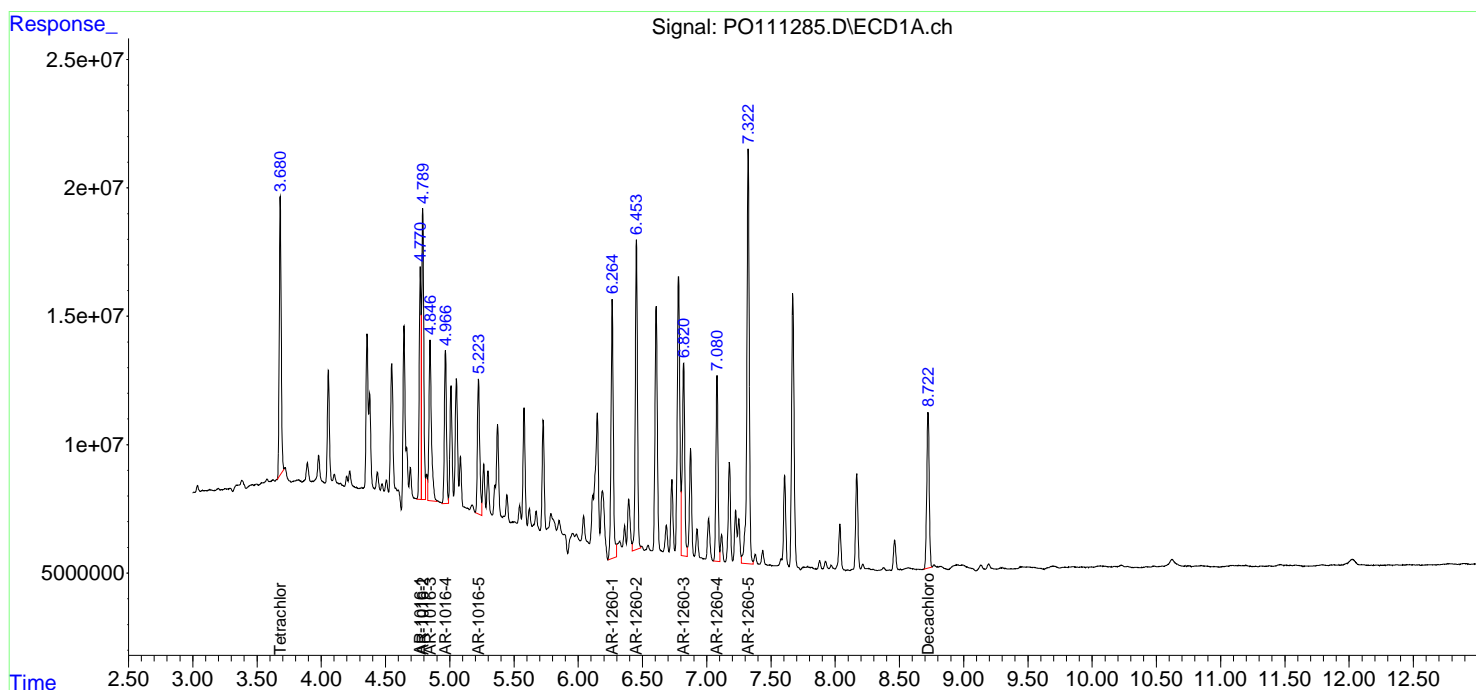
APPROVED

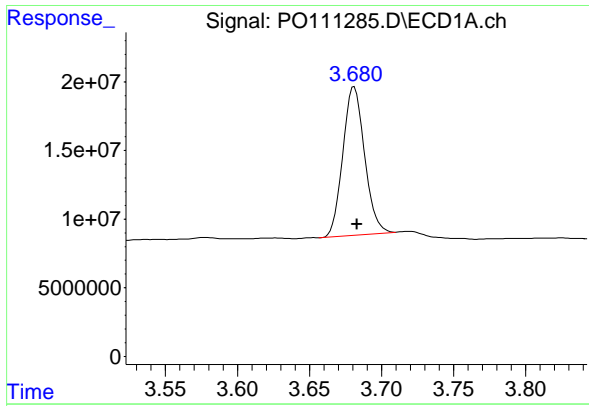
Reviewed By :Yogesh Patel 05/23/2025

Supervised By :mohammad ahmed 05/24/2025

Integration File signal 1: autoint1.e
 Integration File signal 2: autoint2.e
 Quant Time: May 22 15:14:23 2025
 Quant Method : Z:\pestpcbsrv\HPCHEM1\ECD_O\methods\PO051525.M
 Quant Title : GC EXTRACTABLES
 QLast Update : Thu May 15 07:11:53 2025
 Response via : Initial Calibration
 Integrator: ChemStation

Volume Inj. : 2 µl
 Signal #1 Phase : ZB-MR1 Signal #2 Phase: ZB-MR2
 Signal #1 Info : 30Mx0.32mmx 0.50µm Signal #2 Info : 30M x 0.32mm x 0.25µm





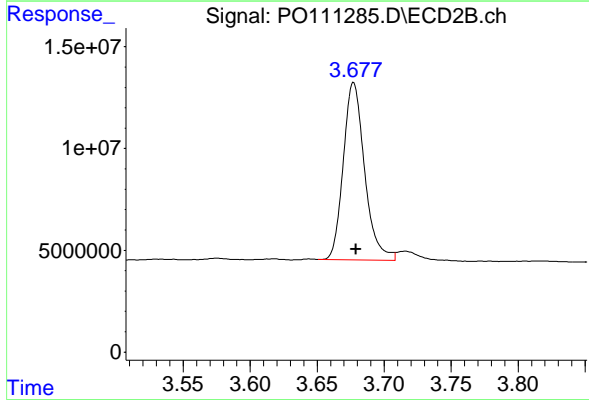
#1 Tetrachloro-m-xylene

R.T.: 3.681 min
 Delta R.T.: -0.002 min
 Response: 113257664
 Conc: 19.25 ng/ml

Instrument :
 ECD_O
 ClientSampleId :
 TP-21MS

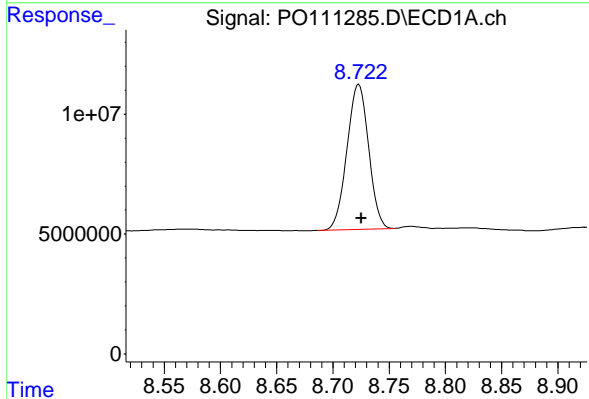
Manual Integrations
 APPROVED

Reviewed By :Yogesh Patel 05/23/2025
 Supervised By :mohammad ahmed 05/24/2025



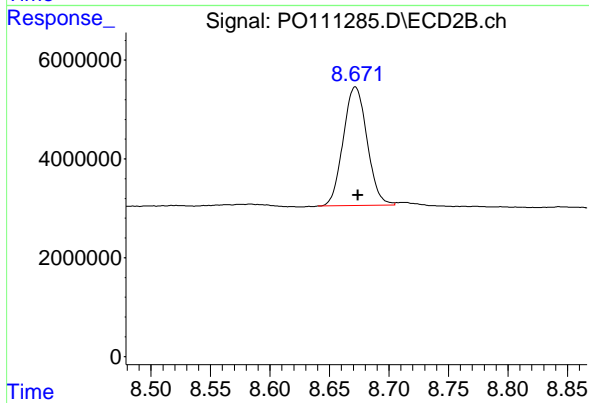
#1 Tetrachloro-m-xylene

R.T.: 3.677 min
 Delta R.T.: -0.002 min
 Response: 96330487
 Conc: 17.67 ng/ml



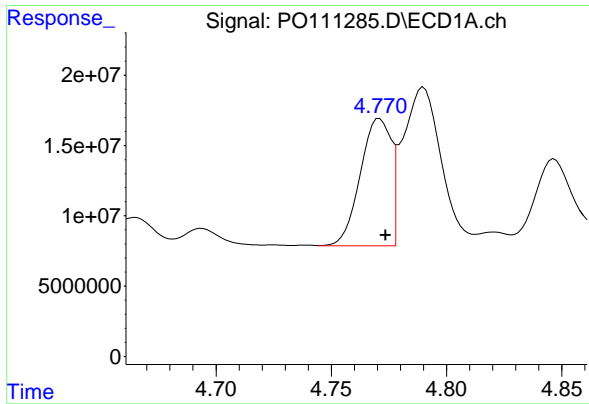
#2 Decachlorobiphenyl

R.T.: 8.723 min
 Delta R.T.: -0.002 min
 Response: 81060470
 Conc: 15.70 ng/ml



#2 Decachlorobiphenyl

R.T.: 8.672 min
 Delta R.T.: -0.002 min
 Response: 33566078
 Conc: 18.14 ng/ml



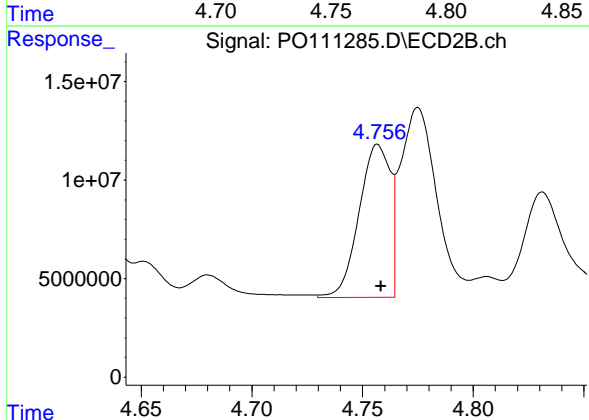
#3 AR-1016-1

R.T.: 4.770 min
 Delta R.T.: -0.003 min
 Response: 90952318
 Conc: 404.13 ng/ml

Instrument :
 ECD_O
 ClientSampleId :
 TP-21MS

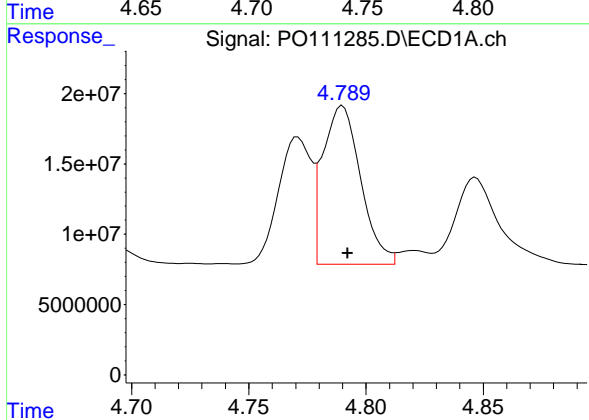
Manual Integrations
 APPROVED

Reviewed By :Yogesh Patel 05/23/2025
 Supervised By :mohammad ahmed 05/24/2025



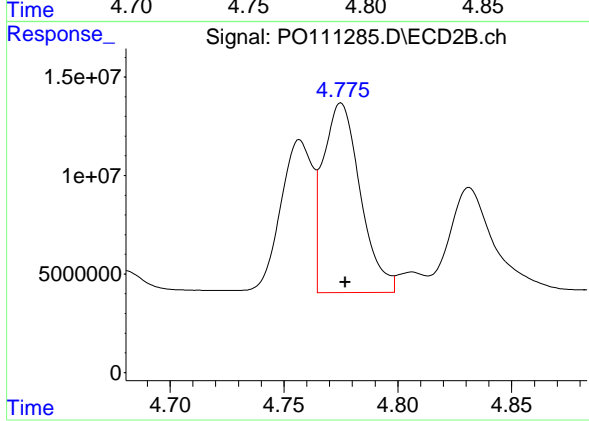
#3 AR-1016-1

R.T.: 4.757 min
 Delta R.T.: -0.002 min
 Response: 76074943
 Conc: 398.45 ng/ml



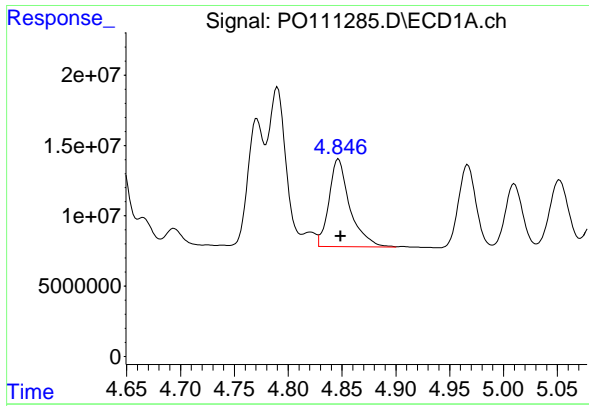
#4 AR-1016-2

R.T.: 4.789 min
 Delta R.T.: -0.003 min
 Response: 123549204
 Conc: 387.38 ng/ml m



#4 AR-1016-2

R.T.: 4.775 min
 Delta R.T.: -0.002 min
 Response: 109518900
 Conc: 395.20 ng/ml



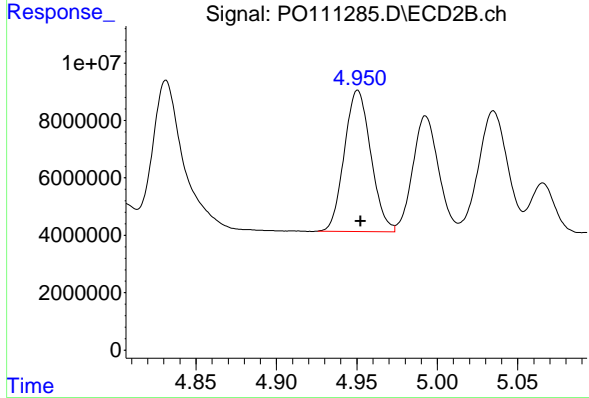
#5 AR-1016-3

R.T.: 4.846 min
 Delta R.T.: -0.003 min
 Response: 83555968
 Conc: 384.83 ng/ml

Instrument :
 ECD_O
 ClientSampleId :
 TP-21MS

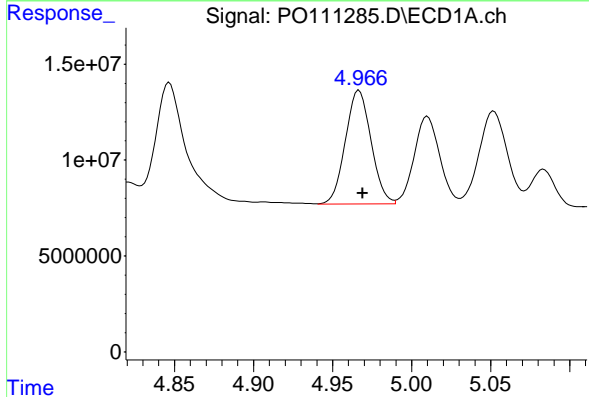
Manual Integrations
 APPROVED

Reviewed By :Yogesh Patel 05/23/2025
 Supervised By :mohammad ahmed 05/24/2025



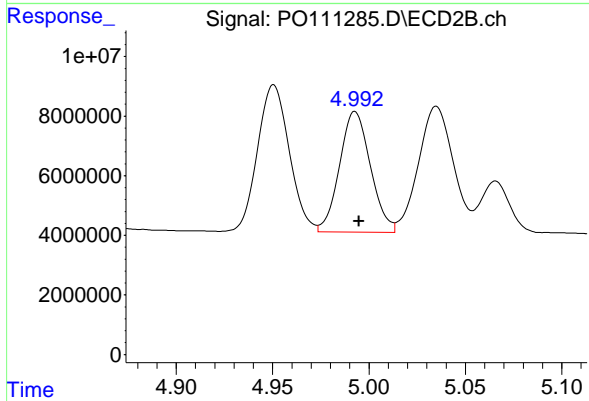
#5 AR-1016-3

R.T.: 4.951 min
 Delta R.T.: -0.002 min
 Response: 56436967
 Conc: 386.36 ng/ml



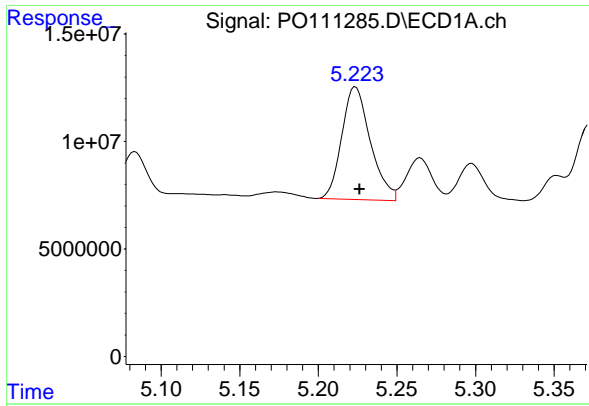
#6 AR-1016-4

R.T.: 4.966 min
 Delta R.T.: -0.003 min
 Response: 67052760
 Conc: 385.03 ng/ml m



#6 AR-1016-4

R.T.: 4.993 min
 Delta R.T.: -0.002 min
 Response: 45393664
 Conc: 378.00 ng/ml



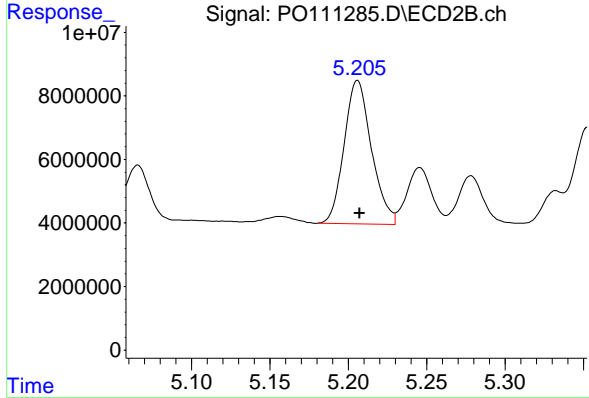
#7 AR-1016-5

R.T.: 5.224 min
 Delta R.T.: -0.003 min
 Response: 66403354
 Conc: 377.31 ng/ml

Instrument :
 ECD_O
 ClientSampleId :
 TP-21MS

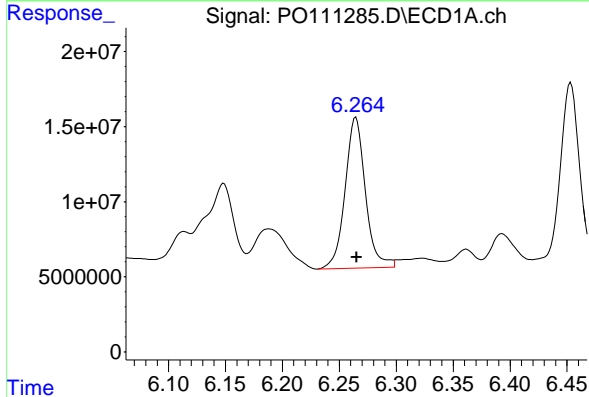
Manual Integrations
 APPROVED

Reviewed By :Yogesh Patel 05/23/2025
 Supervised By :mohammad ahmed 05/24/2025



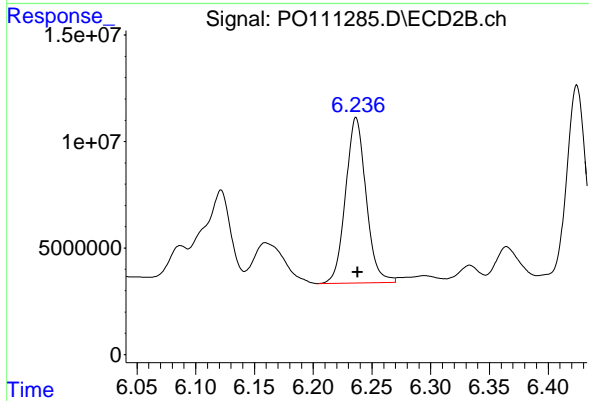
#7 AR-1016-5

R.T.: 5.206 min
 Delta R.T.: -0.001 min
 Response: 54887635
 Conc: 355.49 ng/ml



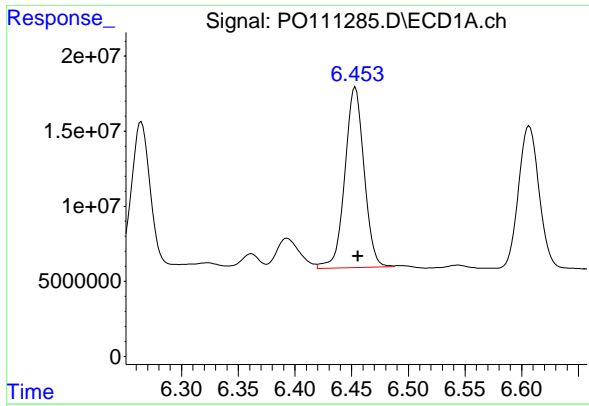
#31 AR-1260-1

R.T.: 6.265 min
 Delta R.T.: 0.000 min
 Response: 125514515
 Conc: 411.57 ng/ml



#31 AR-1260-1

R.T.: 6.237 min
 Delta R.T.: -0.001 min
 Response: 94555739
 Conc: 378.39 ng/ml



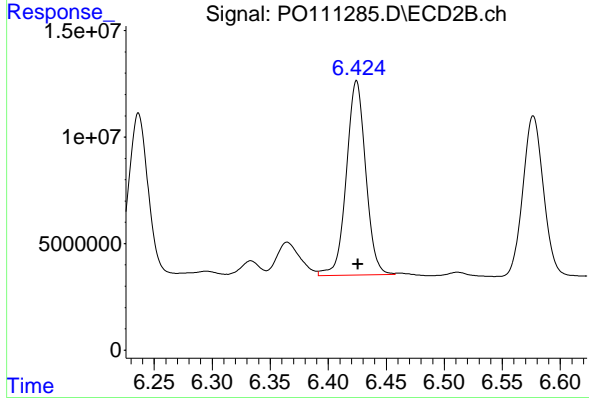
#32 AR-1260-2

R.T.: 6.453 min
 Delta R.T.: -0.002 min
 Response: 141576057
 Conc: 369.70 ng/ml

Instrument :
 ECD_O
 ClientSampleId :
 TP-21MS

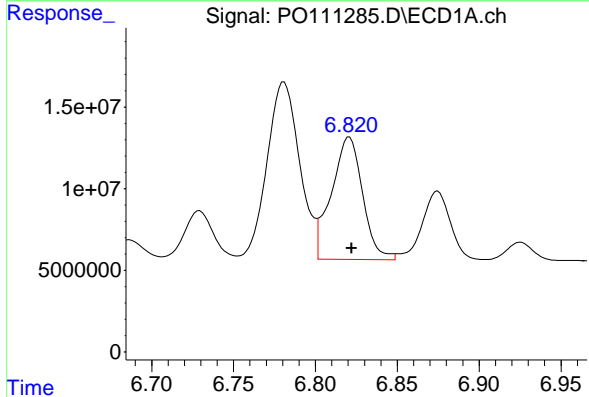
Manual Integrations
 APPROVED

Reviewed By :Yogesh Patel 05/23/2025
 Supervised By :mohammad ahmed 05/24/2025



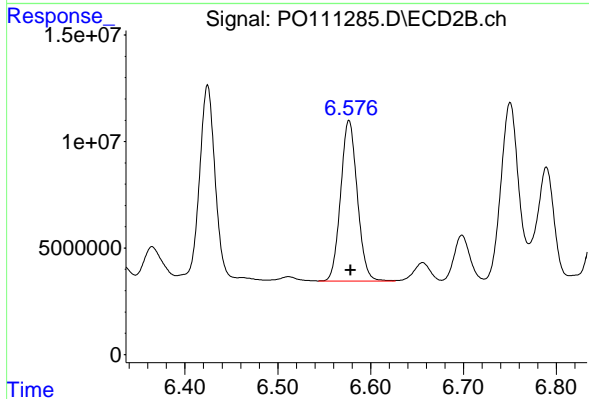
#32 AR-1260-2

R.T.: 6.424 min
 Delta R.T.: -0.001 min
 Response: 106122839
 Conc: 360.61 ng/ml



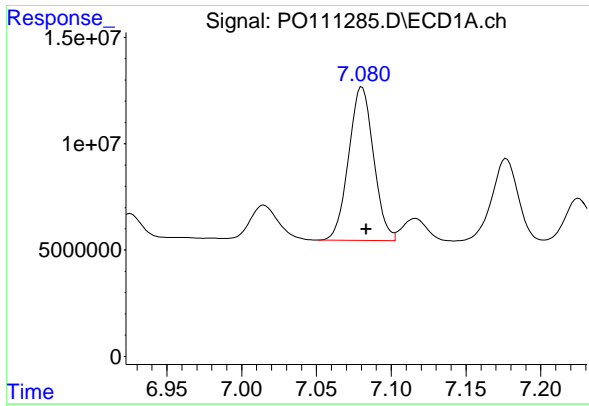
#33 AR-1260-3

R.T.: 6.821 min
 Delta R.T.: -0.001 min
 Response: 99664028
 Conc: 285.91 ng/ml



#33 AR-1260-3

R.T.: 6.577 min
 Delta R.T.: -0.002 min
 Response: 94045071
 Conc: 328.00 ng/ml



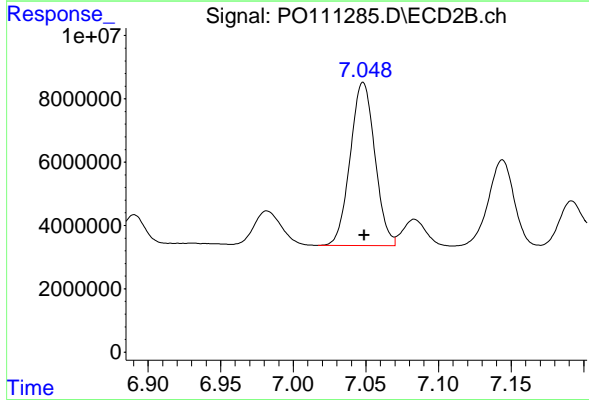
#34 AR-1260-4

R.T.: 7.080 min
 Delta R.T.: -0.003 min
 Response: 83613163
 Conc: 298.66 ng/ml

Instrument :
 ECD_O
 ClientSampleId :
 TP-21MS

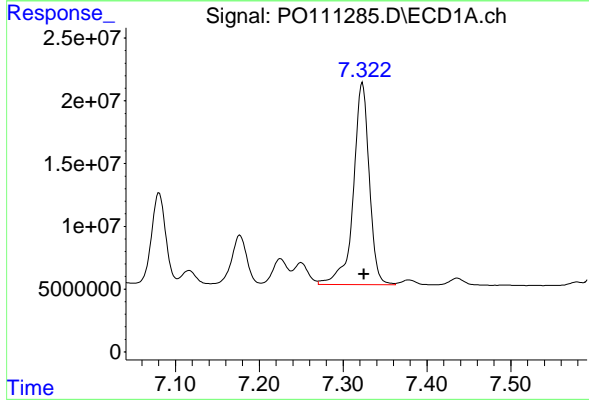
Manual Integrations
 APPROVED

Reviewed By :Yogesh Patel 05/23/2025
 Supervised By :mohammad ahmed 05/24/2025



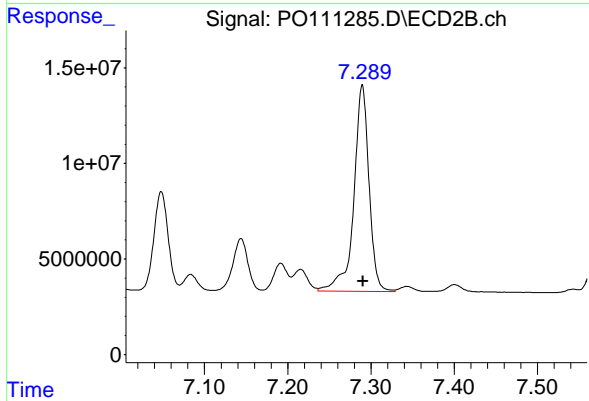
#34 AR-1260-4

R.T.: 7.048 min
 Delta R.T.: 0.000 min
 Response: 60952880
 Conc: 303.61 ng/ml



#35 AR-1260-5

R.T.: 7.323 min
 Delta R.T.: -0.002 min
 Response: 211908800
 Conc: 294.36 ng/ml



#35 AR-1260-5

R.T.: 7.290 min
 Delta R.T.: 0.000 min
 Response: 137288300
 Conc: 298.71 ng/ml