

Data Path : Z:\pestpcbsrv\HPCHEM1\ECD\_0\Data\P0052322\  
 Data File : P0086404.D  
 Signal(s) : Signal #1: ECD1A.CH Signal #2: ECD2B.CH  
 Acq On : 23 May 2022 9:30  
 Operator : YP\AJ  
 Sample : HEXANE  
 Misc :  
 ALS Vial : 1 Sample Multiplier: 1

Instrument :  
 ECD\_0  
 ClientSampleId :

Integration File signal 1: autoint1.e  
 Integration File signal 2: autoint2.e  
 Quant Time: May 24 01:19:20 2022  
 Quant Method : Z:\pestpcbsrv\HPCHEM1\ECD\_0\methods\P0051122.M  
 Quant Title : GC EXTRACTABLES  
 QLast Update : Thu May 19 09:06:34 2022  
 Response via : Initial Calibration  
 Integrator: ChemStation 6890 Scale Mode: Small noise peaks clipped

Volume Inj. : 2 µl  
 Signal #1 Phase : ZB-MR1 Signal #2 Phase: ZB-MR2  
 Signal #1 Info : 30Mx0.32mmx 0.50µ Signal #2 Info : 30M x 0.32mm x 0.25µm

Compound	RT#1	RT#2	Resp#1	Resp#2	ng/ml	ng/ml
-----						
System Monitoring Compounds						
1) SA Tetrachlo...	4.518f	0.000	10717	0	0.105	N.D. #
Target Compounds						
20) L4 AR-1242-5	6.545f	5.605	835	6952	0.456	6.114 #
24) L5 AR-1248-4	6.545	0.000	835	0	0.259	N.D. #
25) L5 AR-1248-5	6.545f	5.605f	835	6952	0.268	4.425 #
26) L6 AR-1254-1	6.520	5.605	24388	6952	7.247	2.760 #
28) L6 AR-1254-3	7.110	0.000	280408	0	55.500	N.D. #
29) L6 AR-1254-4	0.000	6.436f	0	4852	N.D.	2.193 #
30) L6 AR-1254-5	7.825	0.000	15524	0	3.984	N.D. #
32) L7 AR-1260-2	0.000	6.436f	0	4852	N.D.	2.065 #
33) L7 AR-1260-3	7.955f	0.000	9292	0	3.367	N.D. #
36) L8 AR-1262-1	7.955f	0.000	9292	0	2.054	N.D. #
38) L8 AR-1262-3	8.770	0.000	240293	0	45.689	N.D. #
41) L9 AR-1268-1	8.770	0.000	240293	0	27.524	N.D. #
-----						

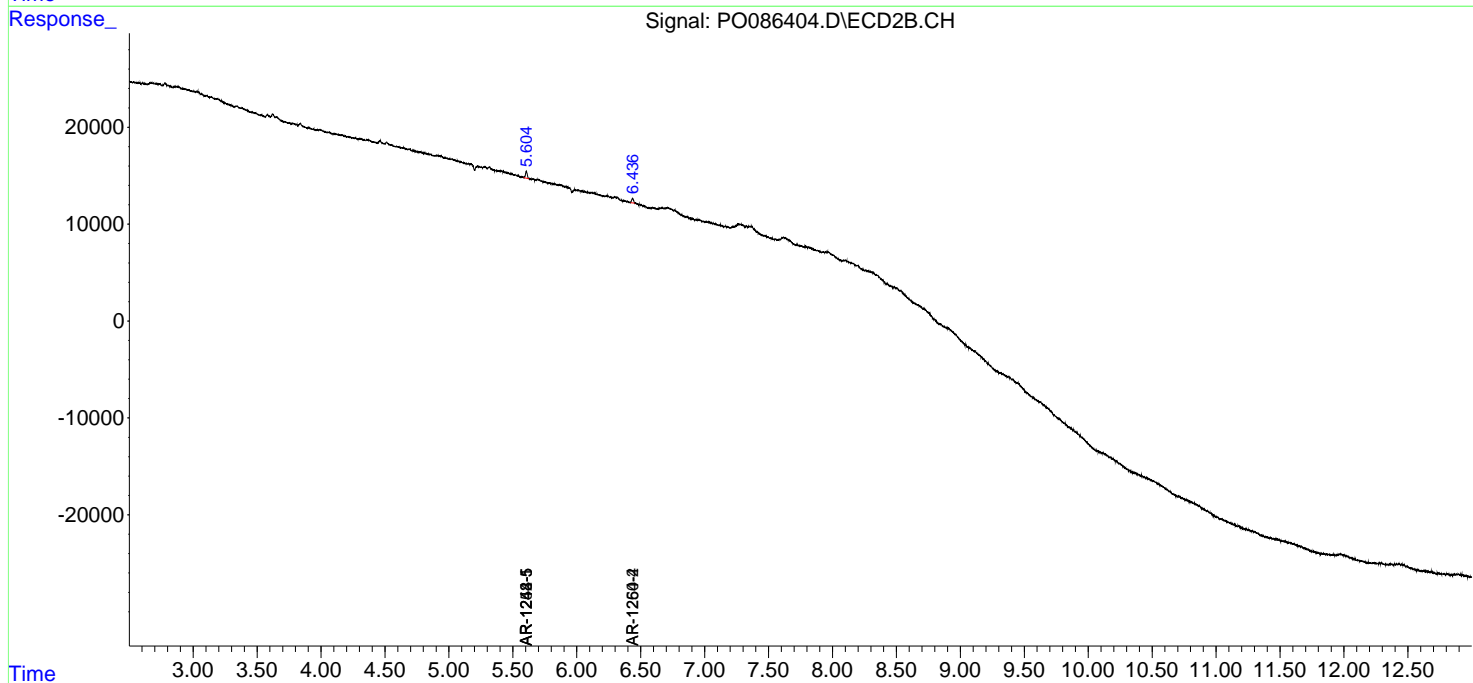
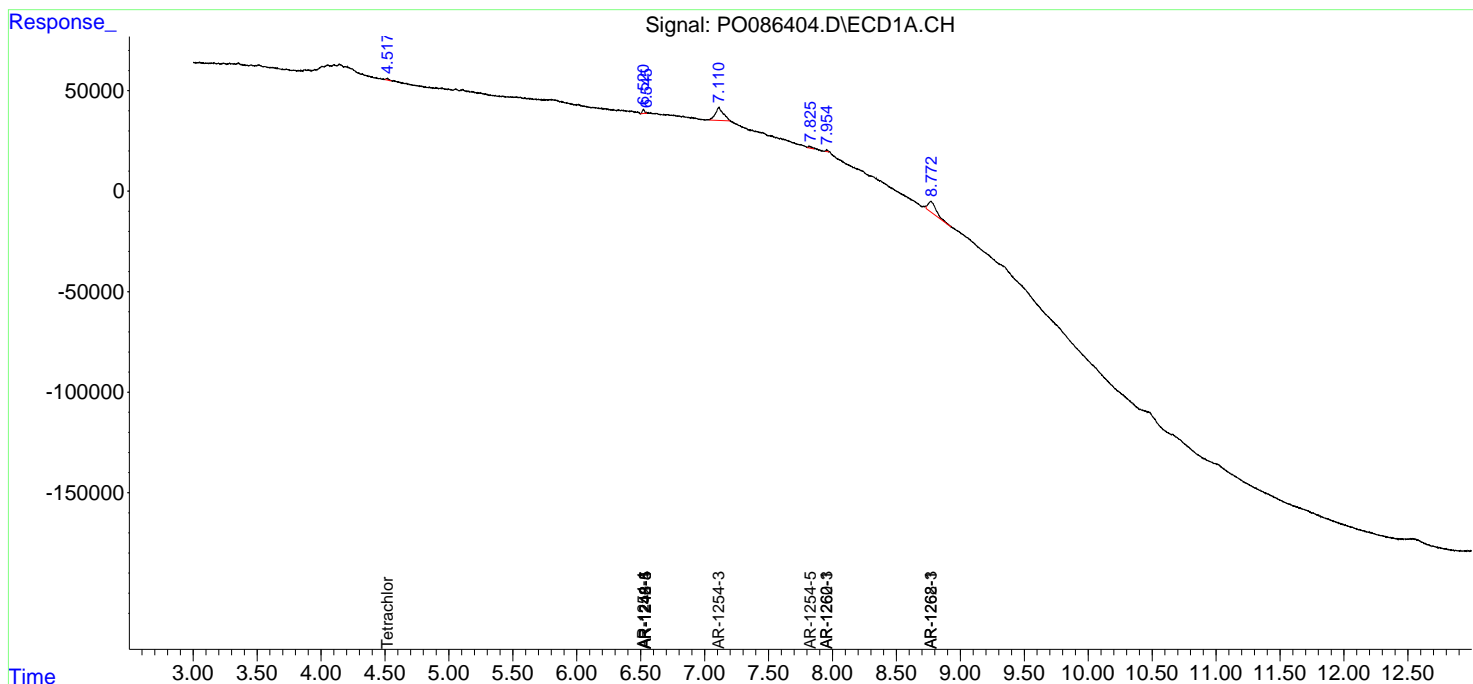
(f)=RT Delta > 1/2 Window (#)=Amounts differ by > 25% (m)=manual int.

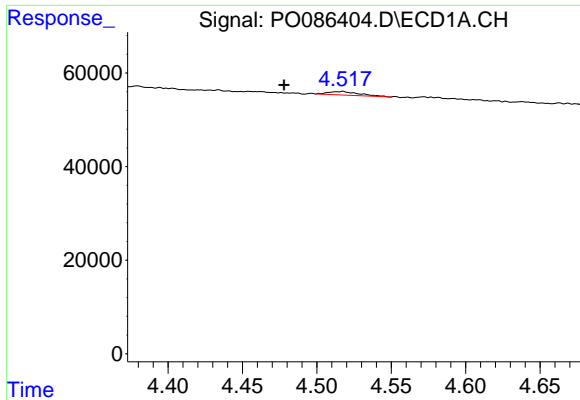
Data Path : Z:\pestpcbsrv\HPCHEM1\ECD\_0\Data\P0052322\  
 Data File : P0086404.D  
 Signal(s) : Signal #1: ECD1A.CH Signal #2: ECD2B.CH  
 Acq On : 23 May 2022 9:30  
 Operator : YP\AJ  
 Sample : HEXANE  
 Misc :  
 ALS Vial : 1 Sample Multiplier: 1

Instrument :  
 ECD\_0  
 ClientSampleId :

Integration File signal 1: autoint1.e  
 Integration File signal 2: autoint2.e  
 Quant Time: May 24 01:19:20 2022  
 Quant Method : Z:\pestpcbsrv\HPCHEM1\ECD\_0\methods\P0051122.M  
 Quant Title : GC EXTRACTABLES  
 QLast Update : Thu May 19 09:06:34 2022  
 Response via : Initial Calibration  
 Integrator: ChemStation 6890 Scale Mode: Small noise peaks clipped

Volume Inj. : 2 µl  
 Signal #1 Phase : ZB-MR1 Signal #2 Phase: ZB-MR2  
 Signal #1 Info : 30Mx0.32mmx 0.50µ Signal #2 Info : 30M x 0.32mm x 0.25µm

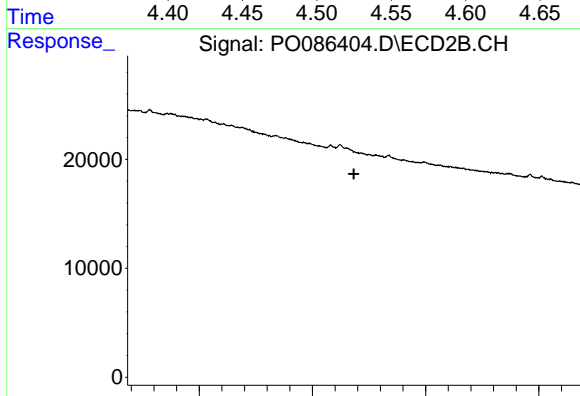




#1 Tetrachloro-m-xylene

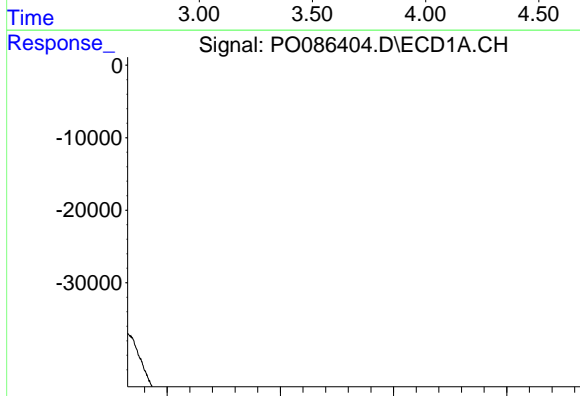
R.T.: 4.518 min  
 Delta R.T.: 0.040 min  
 Response: 10717  
 Conc: 0.11 ng/ml

Instrument :  
 ECD\_O  
 ClientSampleId :



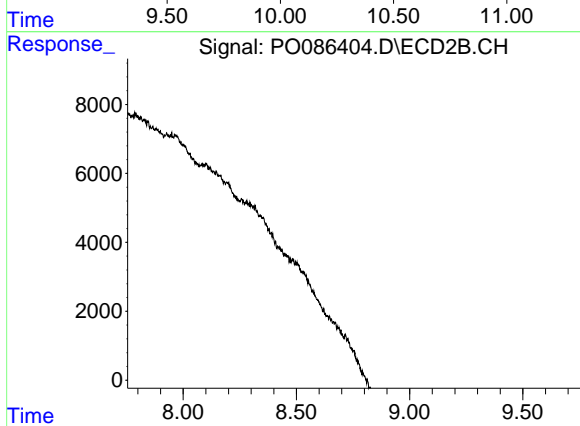
#1 Tetrachloro-m-xylene

R.T.: 0.000 min  
 Exp R.T. : 3.683 min  
 Response: 0  
 Conc: N.D.



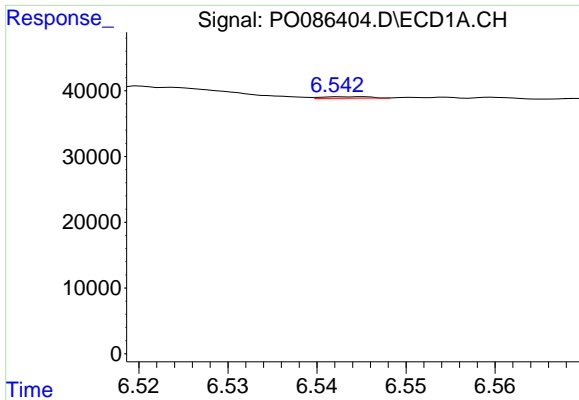
#2 Decachlorobiphenyl

R.T.: 0.000 min  
 Exp R.T. : 10.325 min  
 Response: 0  
 Conc: N.D.



#2 Decachlorobiphenyl

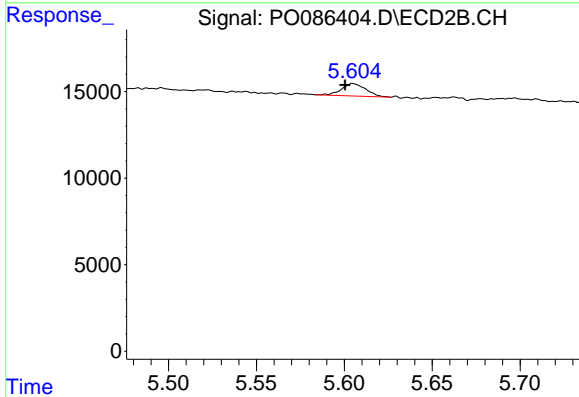
R.T.: 0.000 min  
 Exp R.T. : 8.754 min  
 Response: 0  
 Conc: N.D.



#20 AR-1242-5

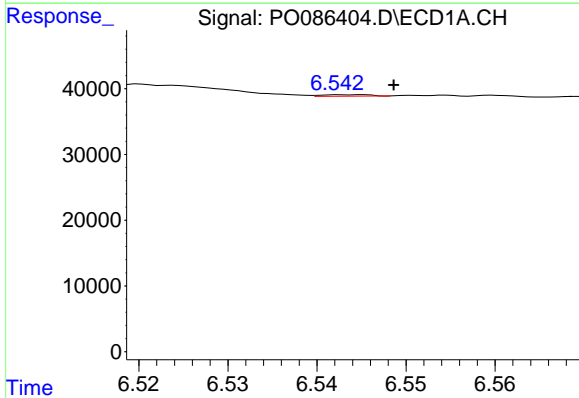
R.T.: 6.545 min  
 Delta R.T.: -0.043 min  
 Response: 835  
 Conc: 0.46 ng/ml

Instrument :  
 ECD\_O  
 ClientSampleId :



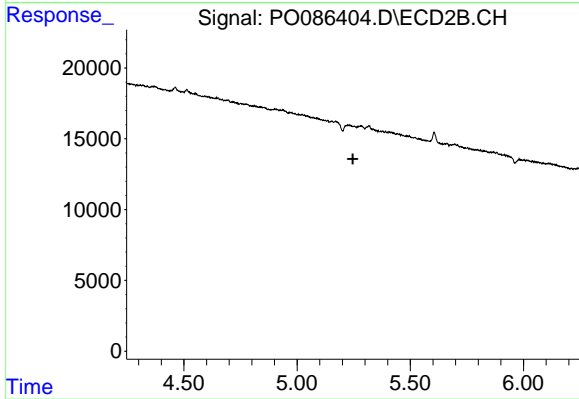
#20 AR-1242-5

R.T.: 5.605 min  
 Delta R.T.: 0.004 min  
 Response: 6952  
 Conc: 6.11 ng/ml



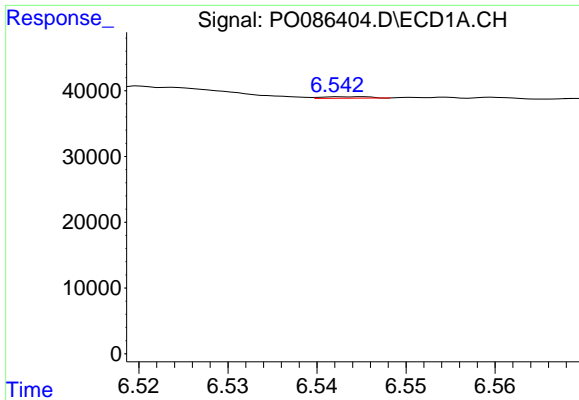
#24 AR-1248-4

R.T.: 6.545 min  
 Delta R.T.: -0.004 min  
 Response: 835  
 Conc: 0.26 ng/ml



#24 AR-1248-4

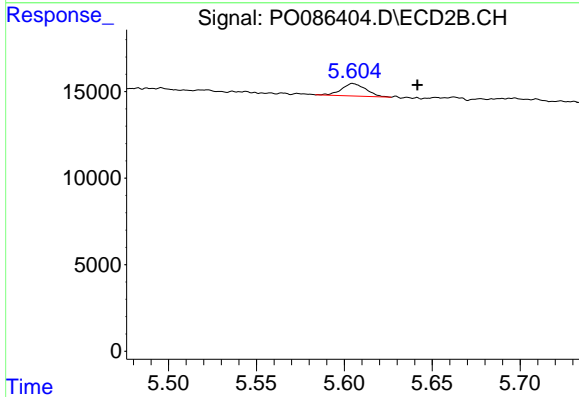
R.T.: 0.000 min  
 Exp R.T. : 5.246 min  
 Response: 0  
 Conc: N.D.



#25 AR-1248-5

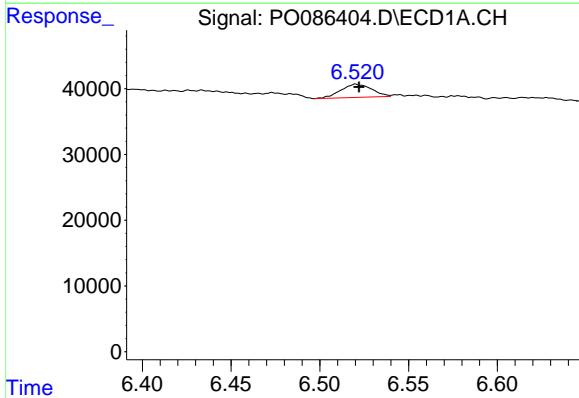
R.T.: 6.545 min  
 Delta R.T.: -0.043 min  
 Response: 835  
 Conc: 0.27 ng/ml

Instrument :  
 ECD\_O  
 ClientSampleId :



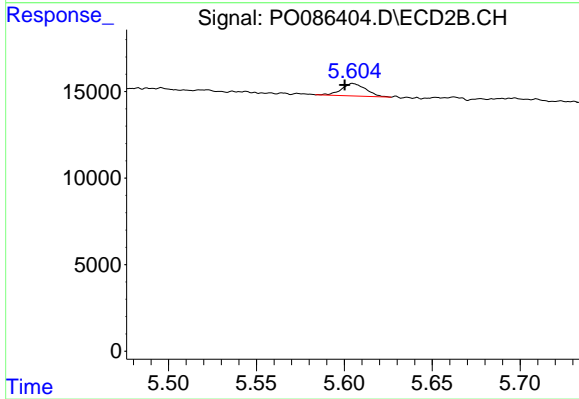
#25 AR-1248-5

R.T.: 5.605 min  
 Delta R.T.: -0.037 min  
 Response: 6952  
 Conc: 4.43 ng/ml



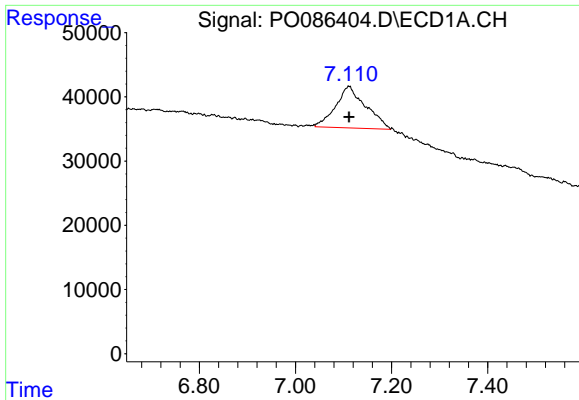
#26 AR-1254-1

R.T.: 6.520 min  
 Delta R.T.: -0.002 min  
 Response: 24388  
 Conc: 7.25 ng/ml



#26 AR-1254-1

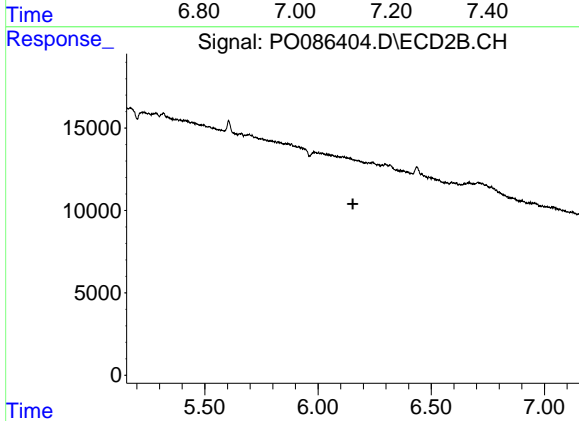
R.T.: 5.605 min  
 Delta R.T.: 0.005 min  
 Response: 6952  
 Conc: 2.76 ng/ml



#28 AR-1254-3

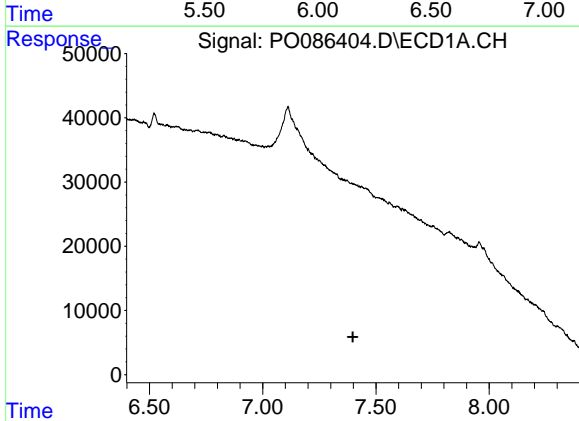
R.T.: 7.110 min  
 Delta R.T.: 0.000 min  
 Response: 280408  
 Conc: 55.50 ng/ml

Instrument :  
 ECD\_O  
 ClientSampleId :



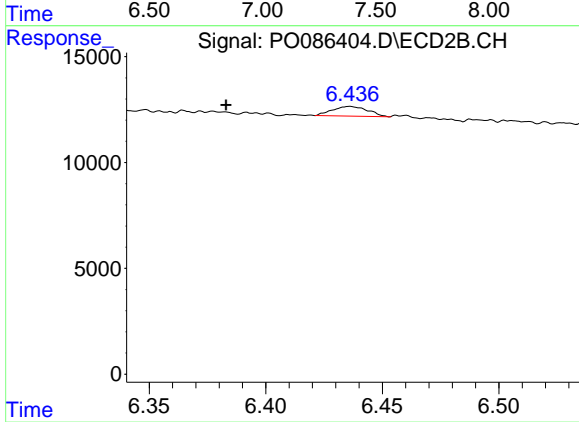
#28 AR-1254-3

R.T.: 0.000 min  
 Exp R.T. : 6.154 min  
 Response: 0  
 Conc: N.D.



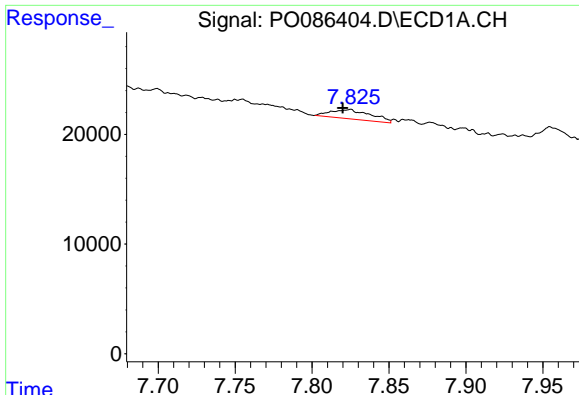
#29 AR-1254-4

R.T.: 0.000 min  
 Exp R.T. : 7.398 min  
 Response: 0  
 Conc: N.D.



#29 AR-1254-4

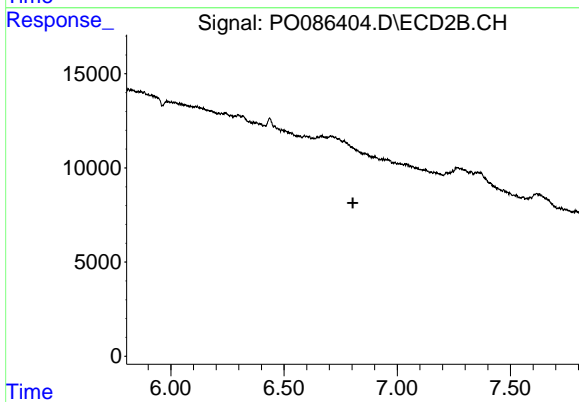
R.T.: 6.436 min  
 Delta R.T.: 0.053 min  
 Response: 4852  
 Conc: 2.19 ng/ml



#30 AR-1254-5

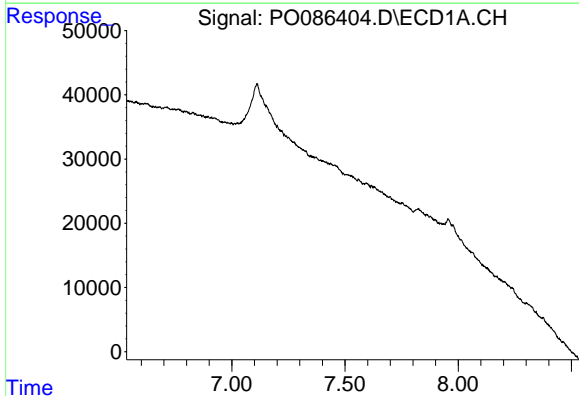
R.T.: 7.825 min  
 Delta R.T.: 0.005 min  
 Response: 15524  
 Conc: 3.98 ng/ml

Instrument :  
 ECD\_O  
 ClientSampleId :



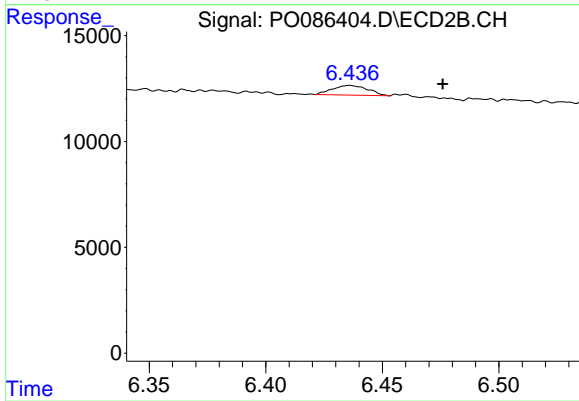
#30 AR-1254-5

R.T.: 0.000 min  
 Exp R.T. : 6.804 min  
 Response: 0  
 Conc: N.D.



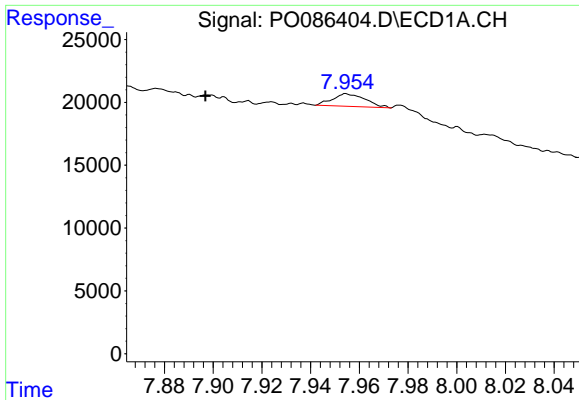
#32 AR-1260-2

R.T.: 0.000 min  
 Exp R.T. : 7.535 min  
 Response: 0  
 Conc: N.D.



#32 AR-1260-2

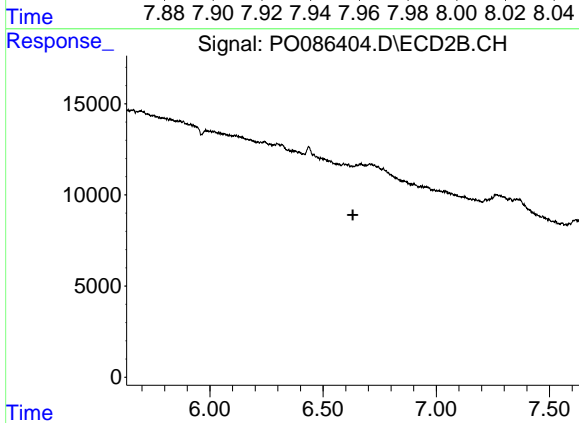
R.T.: 6.436 min  
 Delta R.T.: -0.040 min  
 Response: 4852  
 Conc: 2.06 ng/ml



#33 AR-1260-3

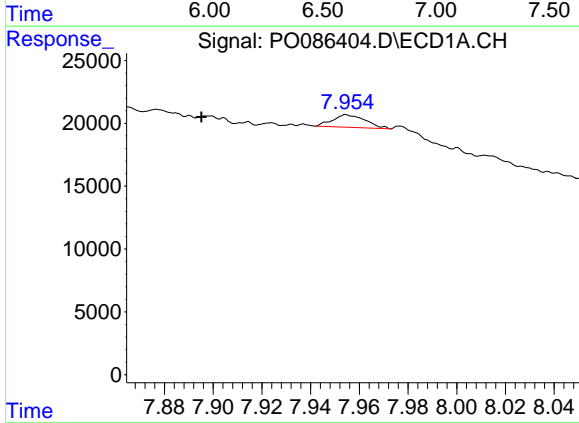
R.T.: 7.955 min  
 Delta R.T.: 0.058 min  
 Response: 9292  
 Conc: 3.37 ng/ml

Instrument :  
 ECD\_O  
 ClientSampleId :



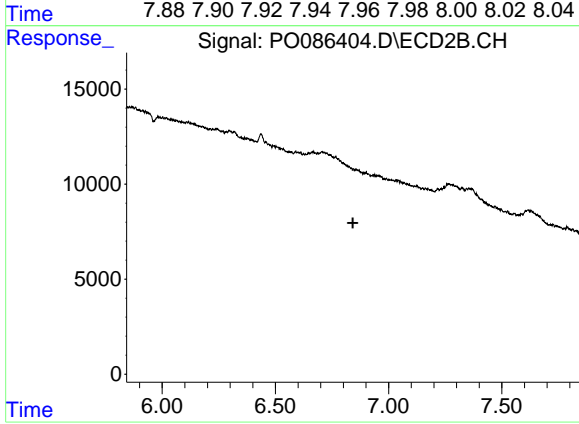
#33 AR-1260-3

R.T.: 0.000 min  
 Exp R.T. : 6.632 min  
 Response: 0  
 Conc: N.D.



#36 AR-1262-1

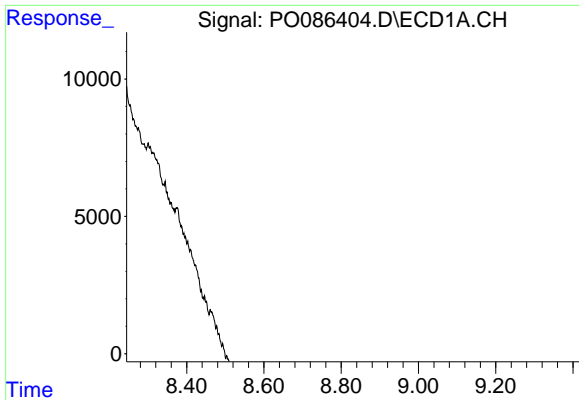
R.T.: 7.955 min  
 Delta R.T.: 0.059 min  
 Response: 9292  
 Conc: 2.05 ng/ml



#36 AR-1262-1

R.T.: 0.000 min  
 Exp R.T. : 6.842 min  
 Response: 0  
 Conc: N.D.

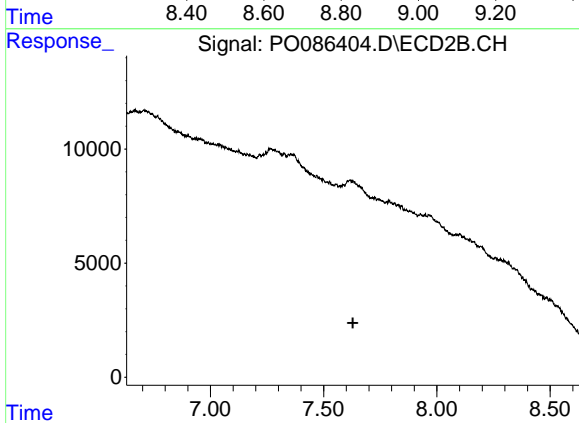




#38 AR-1262-3

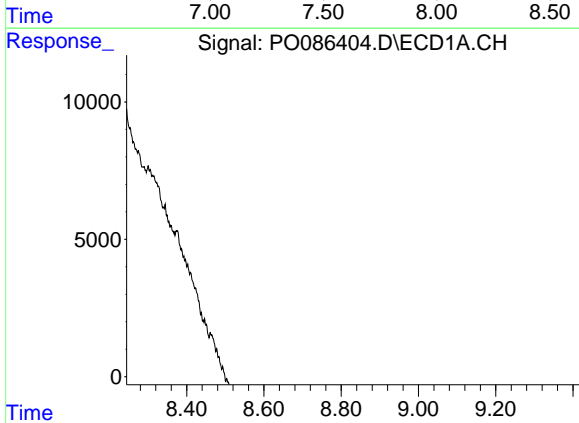
R.T.: 8.770 min  
 Delta R.T.: -0.004 min  
 Response: 240293  
 Conc: 45.69 ng/ml

Instrument :  
 ECD\_O  
 ClientSampleId :



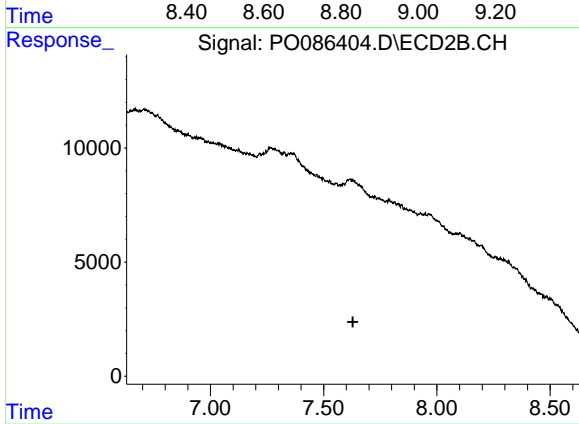
#38 AR-1262-3

R.T.: 0.000 min  
 Exp R.T. : 7.629 min  
 Response: 0  
 Conc: N.D.



#41 AR-1268-1

R.T.: 8.770 min  
 Delta R.T.: 0.000 min  
 Response: 240293  
 Conc: 27.52 ng/ml



#41 AR-1268-1

R.T.: 0.000 min  
 Exp R.T. : 7.629 min  
 Response: 0  
 Conc: N.D.