

Data Path : Z:\pestpcbsrv\HPCHEM1\ECD_0\Data\P0052323\
 Data File : P0095267.D
 Signal(s) : Signal #1: ECD1A.ch Signal #2: ECD2B.ch
 Acq On : 23 May 2023 18:45
 Operator : YP/AJ
 Sample : I.BLK
 Misc :
 ALS Vial : 2 Sample Multiplier: 1

Instrument :
 ECD_0
 ClientSampleId :

Integration File signal 1: autoint1.e
 Integration File signal 2: autoint2.e
 Quant Time: May 23 21:29:41 2023
 Quant Method : Z:\pestpcbsrv\HPCHEM1\ECD_0\methods\P0051823.M
 Quant Title : GC EXTRACTABLES
 QLast Update : Fri May 19 06:20:17 2023
 Response via : Initial Calibration
 Integrator: ChemStation

Volume Inj. : 2 µl
 Signal #1 Phase : ZB-MR1 Signal #2 Phase: ZB-MR2
 Signal #1 Info : 30Mx0.32mmx 0.50µ Signal #2 Info : 30M x 0.32mm x 0.25µm

Compound	RT#1	RT#2	Resp#1	Resp#2	ng/ml	ng/ml

System Monitoring Compounds						
1) SA Tetrachlo...	4.495	3.650	58522409	22545308	20.084	19.855
2) SA Decachlor...	10.552	8.709	50757592	20072750	21.874	20.697
Target Compounds						
3) L1 AR-1016-1	5.719	4.759	345186	305656	3.311	7.694 #
4) L1 AR-1016-2	5.719	4.759	345186	305656	2.289	5.506 #
5) L1 AR-1016-3	5.775	0.000	502175	0	5.311	N.D. #
6) L1 AR-1016-4	5.853	0.000	19742	0	0.262	N.D. #
7) L1 AR-1016-5	6.170	0.000	12384459	0	166.375	N.D. #
8) L2 AR-1221-1	4.701	0.000	149484	0	4.007	N.D. #
9) L2 AR-1221-2	4.809	3.950	1395750	348470	47.668	29.782 #
10) L2 AR-1221-3	4.872	0.000	135128	0	1.590	N.D. #
11) L3 AR-1232-1	4.872	0.000	135128	0	2.134	N.D. #
12) L3 AR-1232-2	5.396	4.759	584525	305656	16.340	11.861 #
13) L3 AR-1232-3	5.719	0.000	345186	0	5.119	N.D. #
14) L3 AR-1232-4	5.853	0.000	19742	0	0.582	N.D. #
15) L3 AR-1232-5	5.974	0.000	103342	0	3.606	N.D. #
16) L4 AR-1242-1	5.719	4.759	345186	305656	4.328	9.994 #
17) L4 AR-1242-2	5.719	4.759	345186	305656	3.020	7.198 #
18) L4 AR-1242-3	5.775	0.000	502175	0	6.861	N.D. #
19) L4 AR-1242-4	5.853	0.000	19742	0	0.340	N.D. #
20) L4 AR-1242-5	6.637	5.616f	31542622	361576	540.099	12.182 #
21) L5 AR-1248-1	5.719	4.759	345186	305656	4.826	11.140 #
22) L5 AR-1248-2	5.974	0.000	103342	0	0.975	N.D. #
23) L5 AR-1248-3	6.170	0.000	12384459	0	107.943	N.D. #
24) L5 AR-1248-4	6.581	0.000	508364	0	4.032	N.D. #
25) L5 AR-1248-5	6.637	5.616	31542622	361576	258.666	8.075 #
26) L6 AR-1254-1	6.581	5.616f	508364	361576	4.495	5.832 #
27) L6 AR-1254-2	6.814	0.000	362601	0	2.087	N.D. #
28) L6 AR-1254-3	7.178	0.000	815796	0	4.650	N.D. #
29) L6 AR-1254-4	7.479	6.267f	60950	444610	0.474	8.560 #
30) L6 AR-1254-5	7.924	0.000	213721	0	1.290	N.D. #
31) L7 AR-1260-1	7.348	6.267	165950	444610	1.210	7.312 #
32) L7 AR-1260-2	7.604	0.000	212176	0	1.316	N.D. #
33) L7 AR-1260-3	8.000	0.000	214063	0	2.088	N.D. #
34) L7 AR-1260-4	8.229	7.096f	44090	309208	0.309	6.361 #
35) L7 AR-1260-5	8.574	0.000	124132	0	0.523	N.D. #
36) L8 AR-1262-1	8.000	0.000	214063	0	1.224	N.D. #
37) L8 AR-1262-2	8.574	7.096f	124132	309208	0.410	4.445 #
38) L8 AR-1262-3	8.914	0.000	296248	0	1.412	N.D. #
39) L8 AR-1262-4	8.999	0.000	874842	0	5.370	N.D. #
40) L8 AR-1262-5	9.730	0.000	163544	0	1.524	N.D. #
41) L9 AR-1268-1	8.914	0.000	296248	0	0.835	N.D. #

Data Path : Z:\pestpcbsrv\HPCHEM1\ECD_0\Data\P0052323\
 Data File : P0095267.D
 Signal(s) : Signal #1: ECD1A.ch Signal #2: ECD2B.ch
 Acq On : 23 May 2023 18:45
 Operator : YP/AJ
 Sample : I.BLK
 Misc :
 ALS Vial : 2 Sample Multiplier: 1

Instrument :
 ECD_0
 ClientSampleId :

Integration File signal 1: autoint1.e
 Integration File signal 2: autoint2.e
 Quant Time: May 23 21:29:41 2023
 Quant Method : Z:\pestpcbsrv\HPCHEM1\ECD_0\methods\P0051823.M
 Quant Title : GC EXTRACTABLES
 QLast Update : Fri May 19 06:20:17 2023
 Response via : Initial Calibration
 Integrator: ChemStation

Volume Inj. : 2 µl
 Signal #1 Phase : ZB-MR1 Signal #2 Phase: ZB-MR2
 Signal #1 Info : 30Mx0.32mmx 0.50µ Signal #2 Info : 30M x 0.32mm x 0.25µm

	Compound	RT#1	RT#2	Resp#1	Resp#2	ng/ml	ng/ml	
42)	L9 AR-1268-2	8.999	0.000	874842	0	2.697	N.D.	#
43)	L9 AR-1268-3	9.258	0.000	168097	0	0.608	N.D.	#
44)	L9 AR-1268-4	9.730	0.000	163544	0	1.384	N.D.	#
45)	L9 AR-1268-5	10.183	0.000	64924	0	0.073	N.D.	#

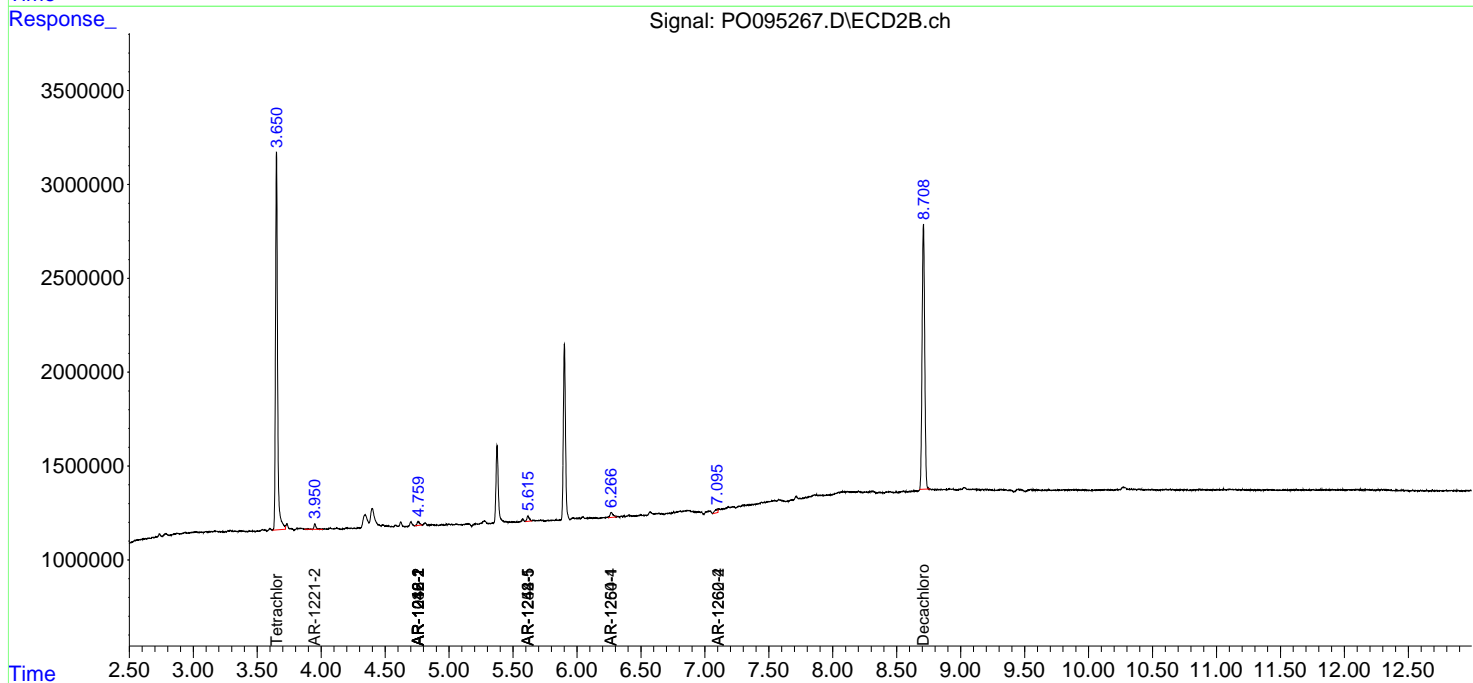
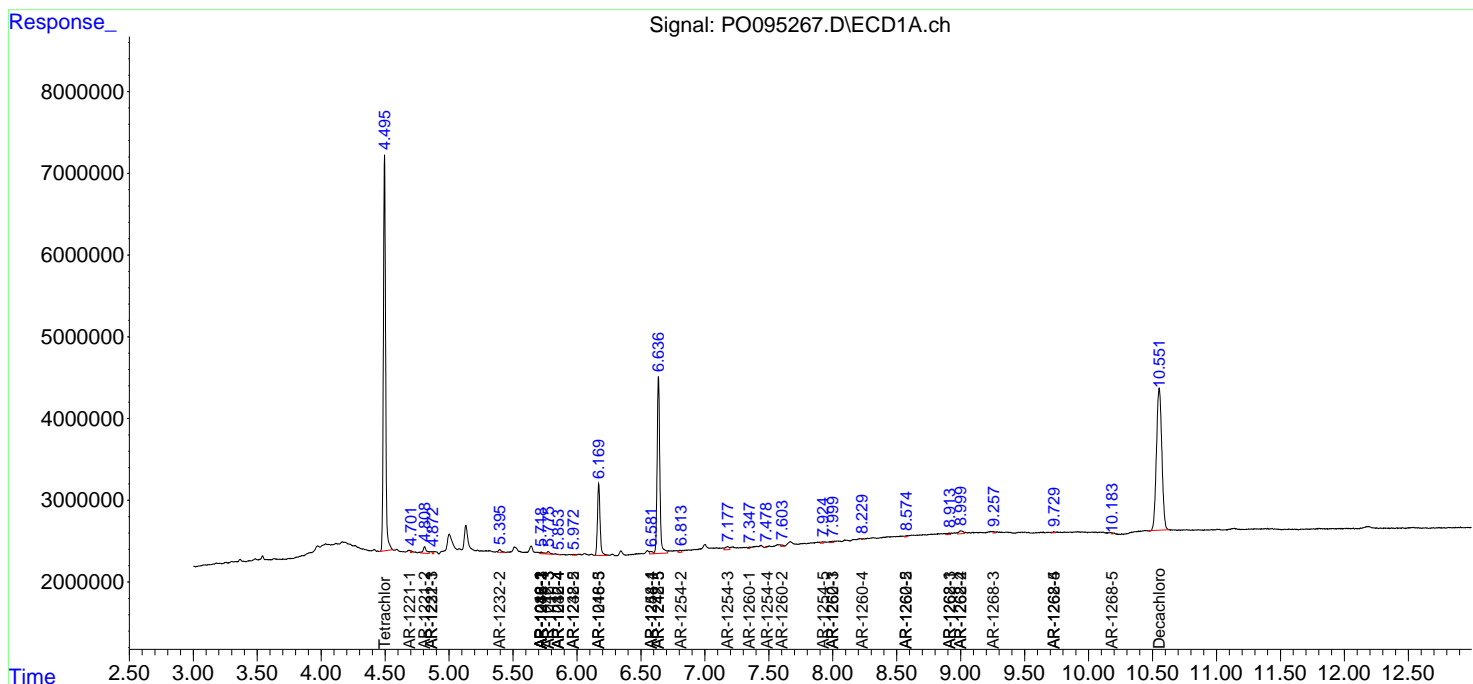
(f)=RT Delta > 1/2 Window (#)=Amounts differ by > 25% (m)=manual int.

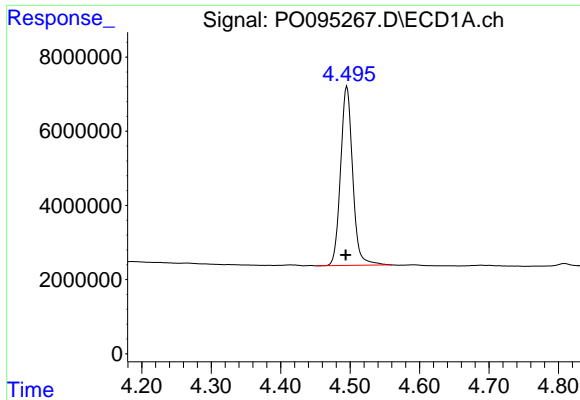
Data Path : Z:\pestpcbsrv\HPCHEM1\ECD_O\Data\PO052323\
 Data File : PO095267.D
 Signal(s) : Signal #1: ECD1A.ch Signal #2: ECD2B.ch
 Acq On : 23 May 2023 18:45
 Operator : YP/AJ
 Sample : I.BLK
 Misc :
 ALS Vial : 2 Sample Multiplier: 1

Instrument :
 ECD_O
 ClientSampleId :

Integration File signal 1: autoint1.e
 Integration File signal 2: autoint2.e
 Quant Time: May 23 21:29:41 2023
 Quant Method : Z:\pestpcbsrv\HPCHEM1\ECD_O\methods\PO051823.M
 Quant Title : GC EXTRACTABLES
 QLast Update : Fri May 19 06:20:17 2023
 Response via : Initial Calibration
 Integrator: ChemStation

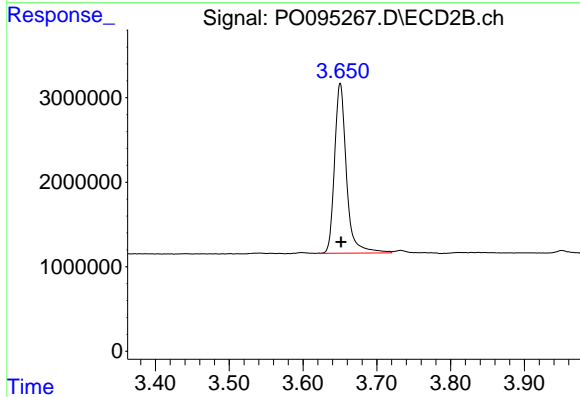
Volume Inj. : 2 µl
 Signal #1 Phase : ZB-MR1 Signal #2 Phase: ZB-MR2
 Signal #1 Info : 30Mx0.32mmx 0.50µ Signal #2 Info : 30M x 0.32mm x 0.25µm



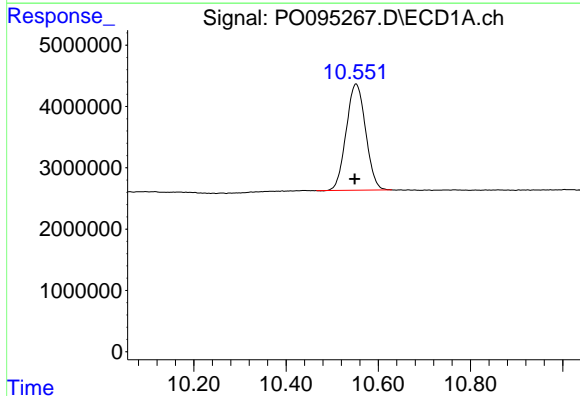


#1 Tetrachloro-m-xylene
 R.T.: 4.495 min
 Delta R.T.: 0.001 min
 Response: 58522409
 Conc: 20.08 ng/ml

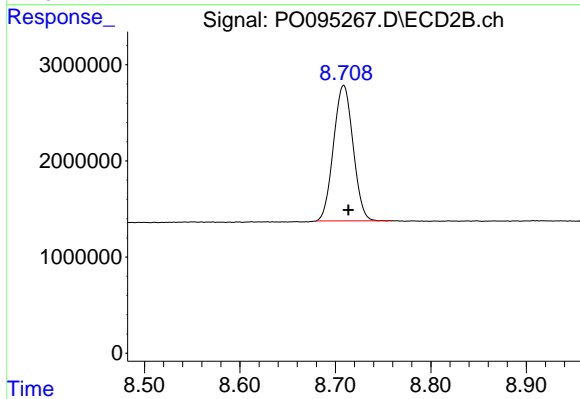
Instrument :
 ECD_O
 ClientSampleId :



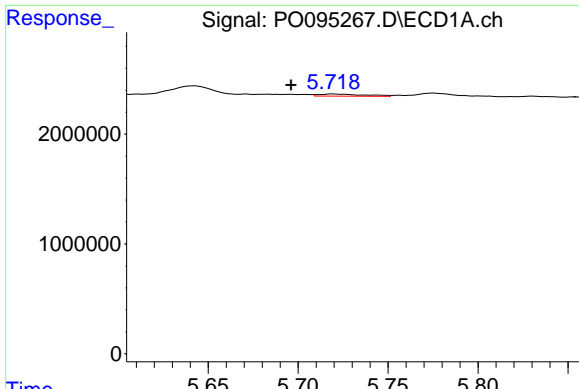
#1 Tetrachloro-m-xylene
 R.T.: 3.650 min
 Delta R.T.: -0.001 min
 Response: 22545308
 Conc: 19.86 ng/ml



#2 Decachlorobiphenyl
 R.T.: 10.552 min
 Delta R.T.: 0.003 min
 Response: 50757592
 Conc: 21.87 ng/ml



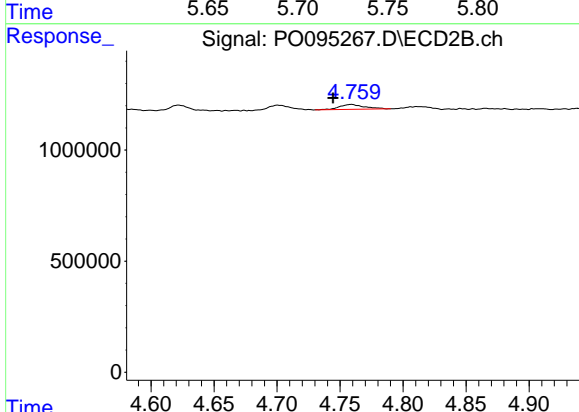
#2 Decachlorobiphenyl
 R.T.: 8.709 min
 Delta R.T.: -0.005 min
 Response: 20072750
 Conc: 20.70 ng/ml



#3 AR-1016-1

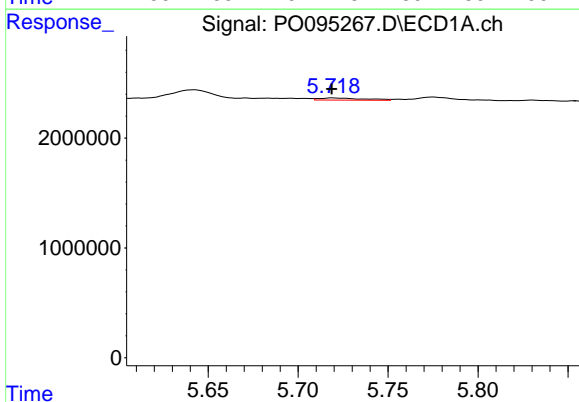
R.T.: 5.719 min
 Delta R.T.: 0.023 min
 Response: 345186
 Conc: 3.31 ng/ml

Instrument :
 ECD_O
 ClientSampleId :



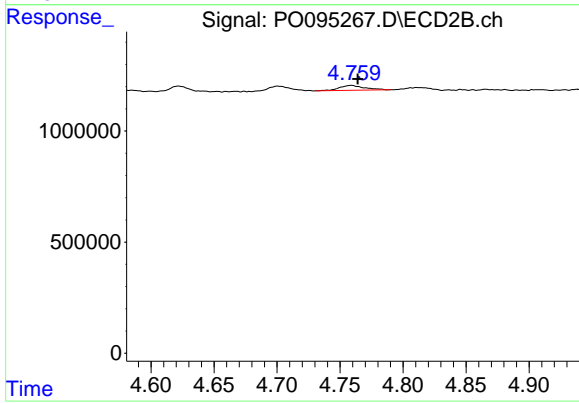
#3 AR-1016-1

R.T.: 4.759 min
 Delta R.T.: 0.014 min
 Response: 305656
 Conc: 7.69 ng/ml



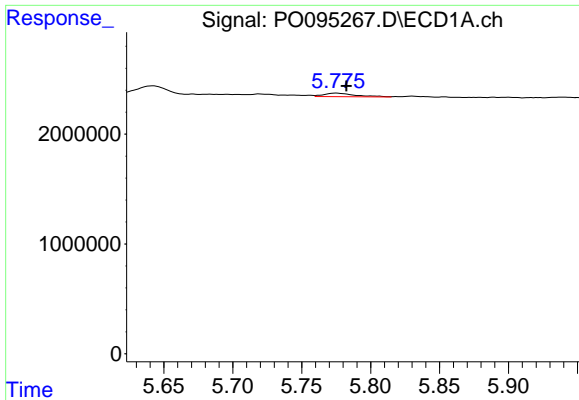
#4 AR-1016-2

R.T.: 5.719 min
 Delta R.T.: 0.000 min
 Response: 345186
 Conc: 2.29 ng/ml



#4 AR-1016-2

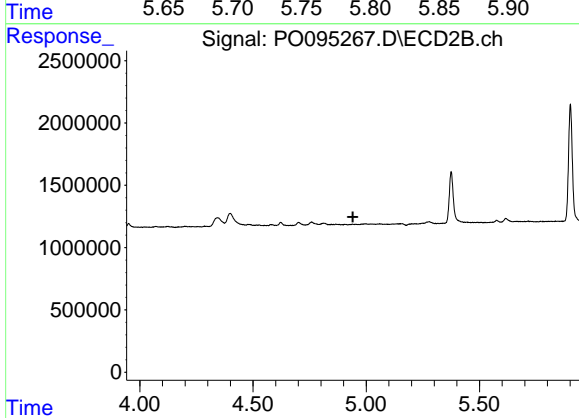
R.T.: 4.759 min
 Delta R.T.: -0.005 min
 Response: 305656
 Conc: 5.51 ng/ml



#5 AR-1016-3

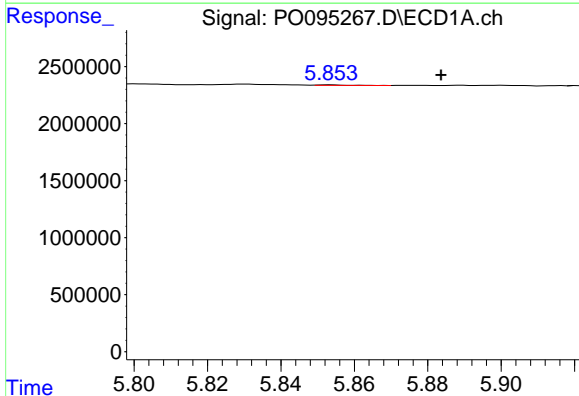
R.T.: 5.775 min
 Delta R.T.: -0.007 min
 Response: 502175
 Conc: 5.31 ng/ml

Instrument :
 ECD_O
 ClientSampleId :



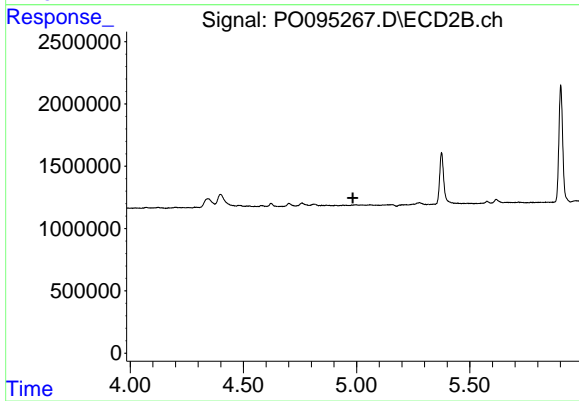
#5 AR-1016-3

R.T.: 0.000 min
 Exp R.T. : 4.941 min
 Response: 0
 Conc: N.D.



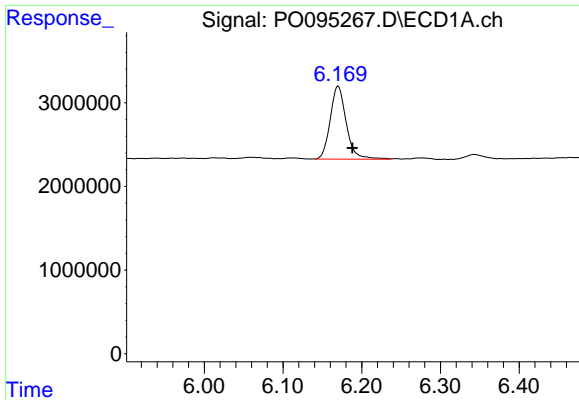
#6 AR-1016-4

R.T.: 5.853 min
 Delta R.T.: -0.030 min
 Response: 19742
 Conc: 0.26 ng/ml



#6 AR-1016-4

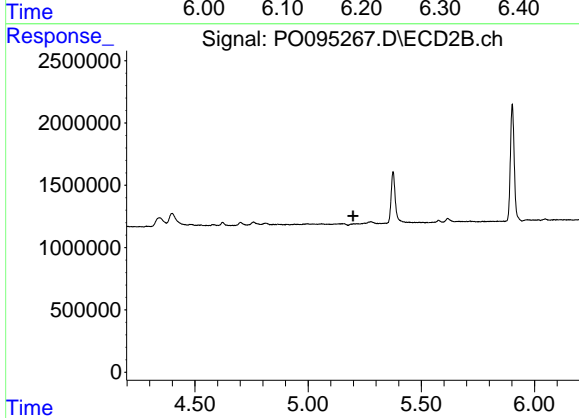
R.T.: 0.000 min
 Exp R.T. : 4.984 min
 Response: 0
 Conc: N.D.



#7 AR-1016-5

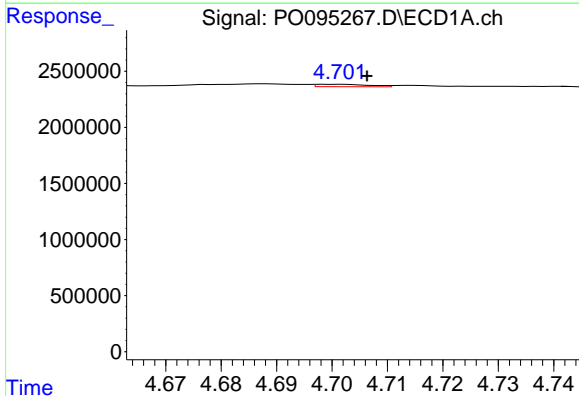
R.T.: 6.170 min
 Delta R.T.: -0.018 min
 Response: 12384459
 Conc: 166.37 ng/ml

Instrument :
 ECD_O
 ClientSampleId :



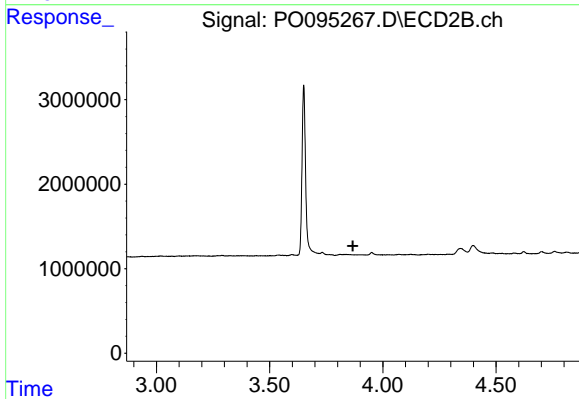
#7 AR-1016-5

R.T.: 0.000 min
 Exp R.T. : 5.198 min
 Response: 0
 Conc: N.D.



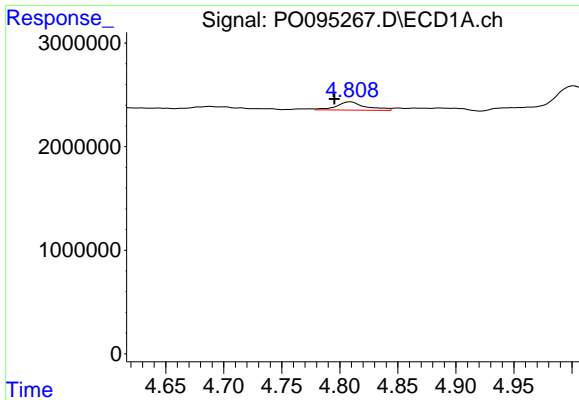
#8 AR-1221-1

R.T.: 4.701 min
 Delta R.T.: -0.006 min
 Response: 149484
 Conc: 4.01 ng/ml



#8 AR-1221-1

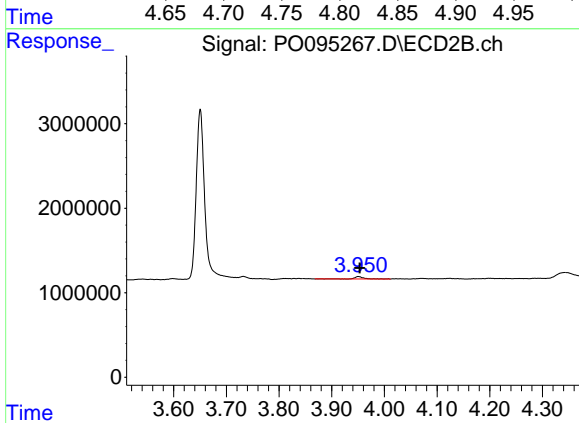
R.T.: 0.000 min
 Exp R.T. : 3.868 min
 Response: 0
 Conc: N.D.



#9 AR-1221-2

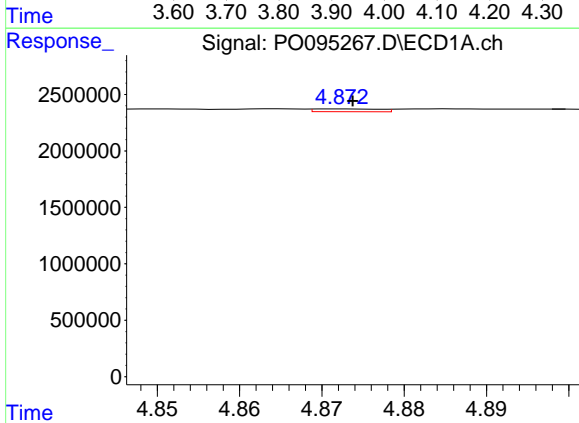
R.T.: 4.809 min
 Delta R.T.: 0.014 min
 Response: 1395750
 Conc: 47.67 ng/ml

Instrument :
 ECD_O
 ClientSampleId :



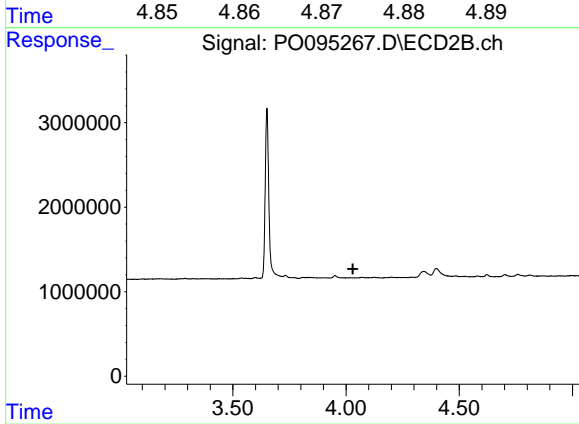
#9 AR-1221-2

R.T.: 3.950 min
 Delta R.T.: -0.003 min
 Response: 348470
 Conc: 29.78 ng/ml



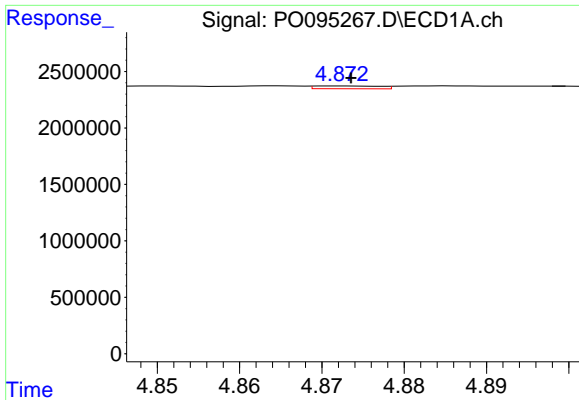
#10 AR-1221-3

R.T.: 4.872 min
 Delta R.T.: -0.002 min
 Response: 135128
 Conc: 1.59 ng/ml



#10 AR-1221-3

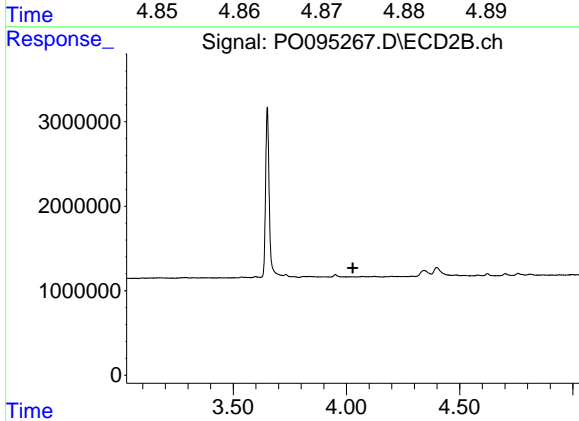
R.T.: 0.000 min
 Exp R.T. : 4.030 min
 Response: 0
 Conc: N.D.



#11 AR-1232-1

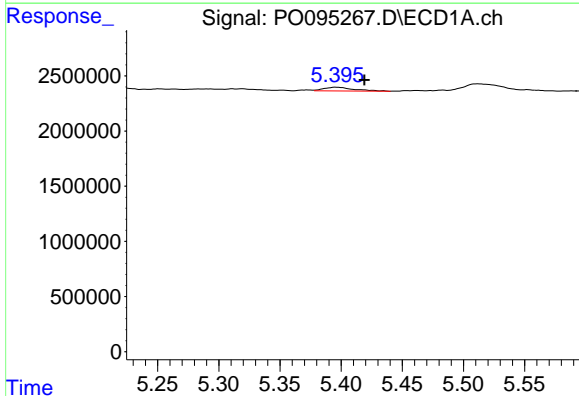
R.T.: 4.872 min
 Delta R.T.: -0.001 min
 Response: 135128
 Conc: 2.13 ng/ml

Instrument :
 ECD_O
 ClientSampleId :



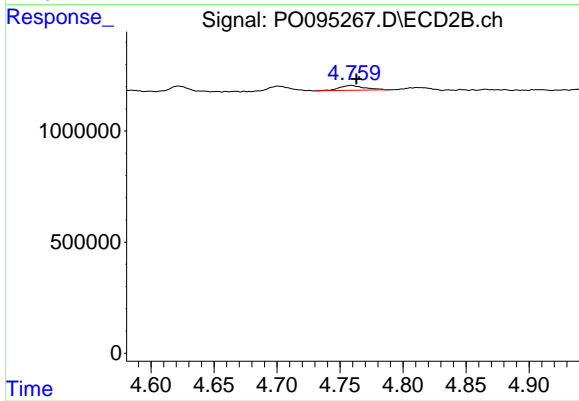
#11 AR-1232-1

R.T.: 0.000 min
 Exp R.T. : 4.028 min
 Response: 0
 Conc: N.D.



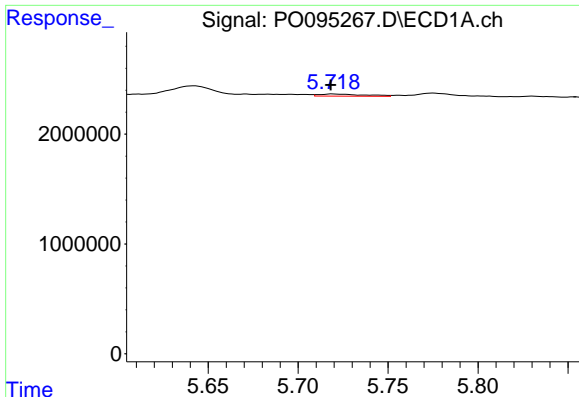
#12 AR-1232-2

R.T.: 5.396 min
 Delta R.T.: -0.023 min
 Response: 584525
 Conc: 16.34 ng/ml



#12 AR-1232-2

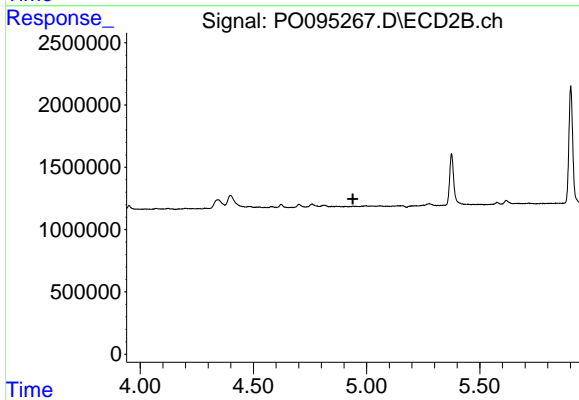
R.T.: 4.759 min
 Delta R.T.: -0.004 min
 Response: 305656
 Conc: 11.86 ng/ml



#13 AR-1232-3

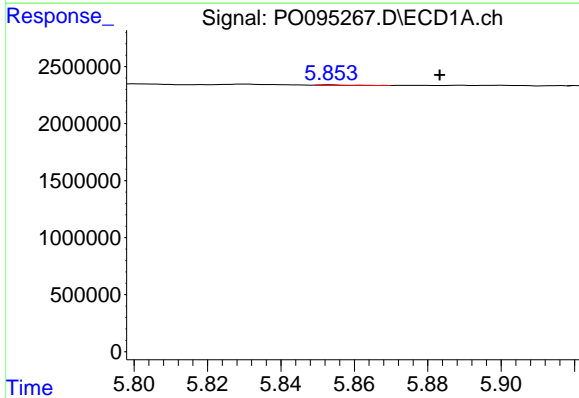
R.T.: 5.719 min
 Delta R.T.: 0.000 min
 Response: 345186
 Conc: 5.12 ng/ml

Instrument :
 ECD_O
 ClientSampleId :



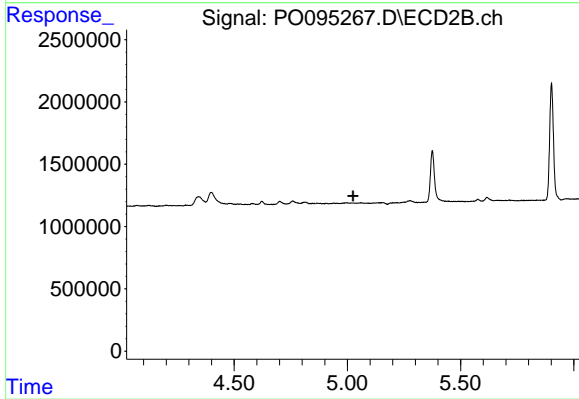
#13 AR-1232-3

R.T.: 0.000 min
 Exp R.T. : 4.940 min
 Response: 0
 Conc: N.D.



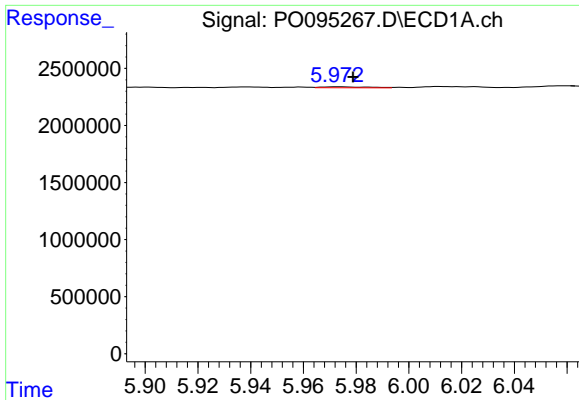
#14 AR-1232-4

R.T.: 5.853 min
 Delta R.T.: -0.030 min
 Response: 19742
 Conc: 0.58 ng/ml



#14 AR-1232-4

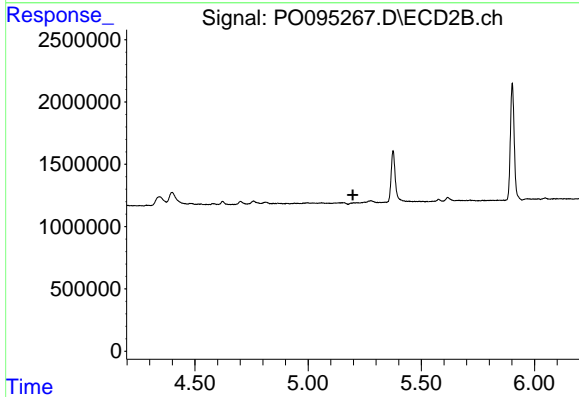
R.T.: 0.000 min
 Exp R.T. : 5.025 min
 Response: 0
 Conc: N.D.



#15 AR-1232-5

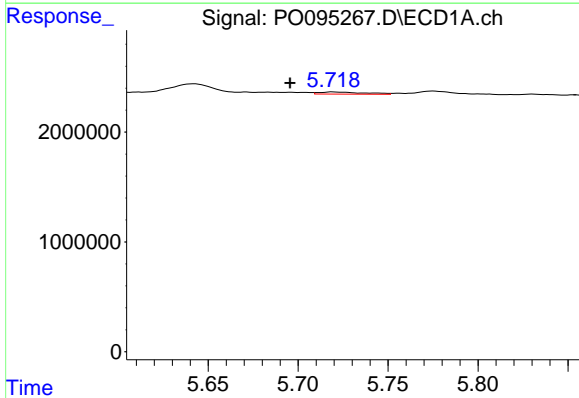
R.T.: 5.974 min
 Delta R.T.: -0.005 min
 Response: 103342
 Conc: 3.61 ng/ml

Instrument :
 ECD_O
 ClientSampleId :



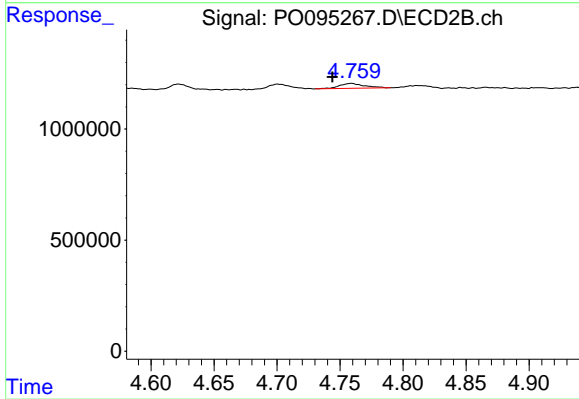
#15 AR-1232-5

R.T.: 0.000 min
 Exp R.T. : 5.197 min
 Response: 0
 Conc: N.D.



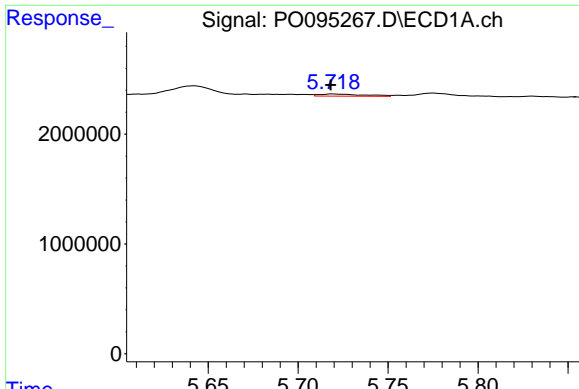
#16 AR-1242-1

R.T.: 5.719 min
 Delta R.T.: 0.023 min
 Response: 345186
 Conc: 4.33 ng/ml



#16 AR-1242-1

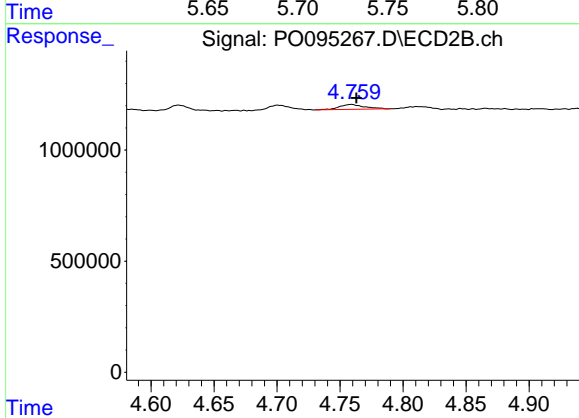
R.T.: 4.759 min
 Delta R.T.: 0.015 min
 Response: 305656
 Conc: 9.99 ng/ml



#17 AR-1242-2

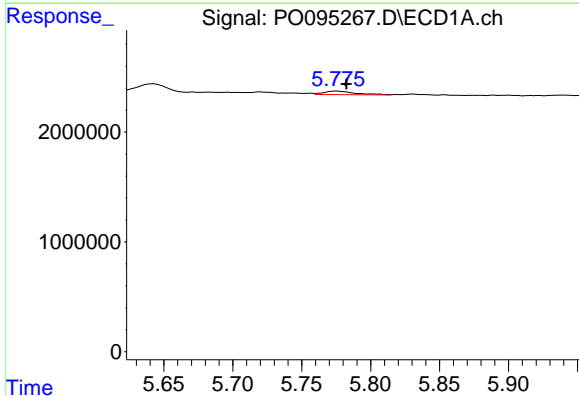
R.T.: 5.719 min
 Delta R.T.: 0.000 min
 Response: 345186
 Conc: 3.02 ng/ml

Instrument :
 ECD_O
 ClientSampleId :



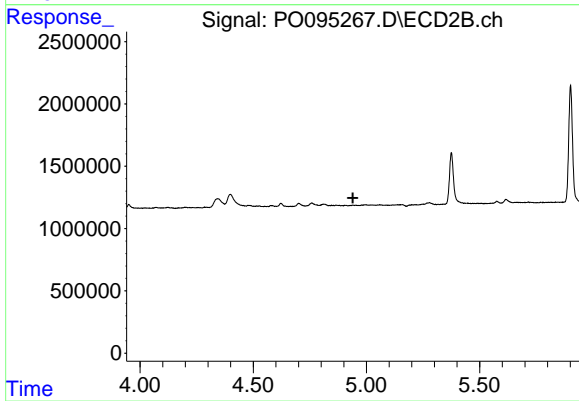
#17 AR-1242-2

R.T.: 4.759 min
 Delta R.T.: -0.004 min
 Response: 305656
 Conc: 7.20 ng/ml



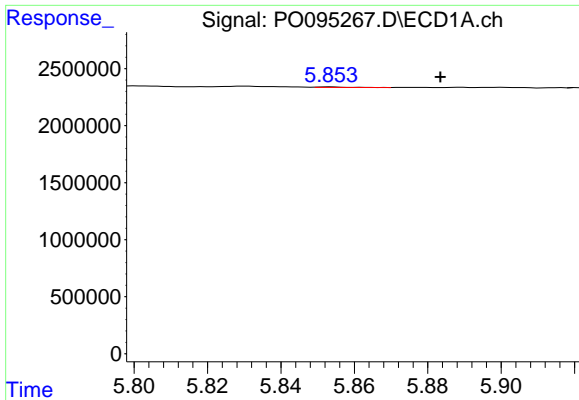
#18 AR-1242-3

R.T.: 5.775 min
 Delta R.T.: -0.007 min
 Response: 502175
 Conc: 6.86 ng/ml



#18 AR-1242-3

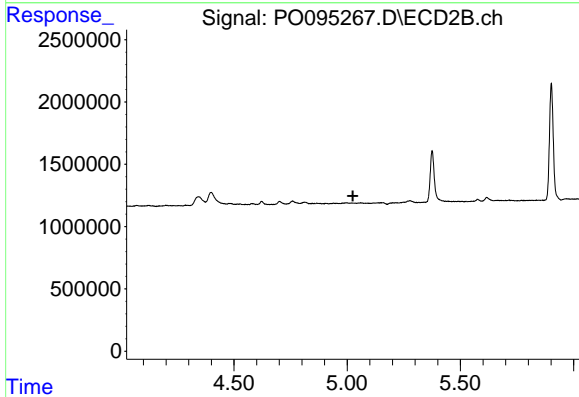
R.T.: 0.000 min
 Exp R.T. : 4.940 min
 Response: 0
 Conc: N.D.



#19 AR-1242-4

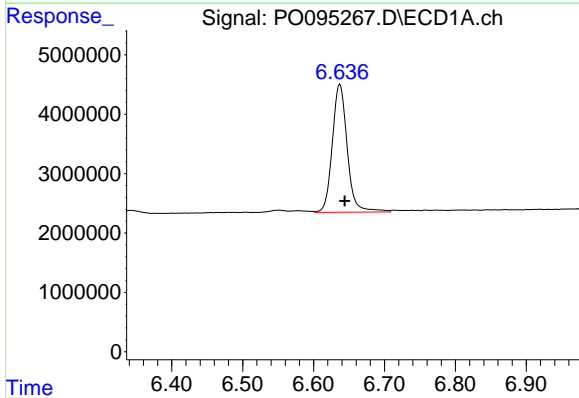
R.T.: 5.853 min
 Delta R.T.: -0.030 min
 Response: 19742
 Conc: 0.34 ng/ml

Instrument :
 ECD_O
 ClientSampleId :



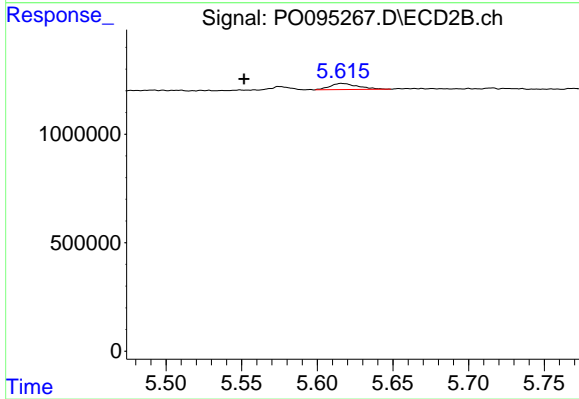
#19 AR-1242-4

R.T.: 0.000 min
 Exp R.T. : 5.025 min
 Response: 0
 Conc: N.D.



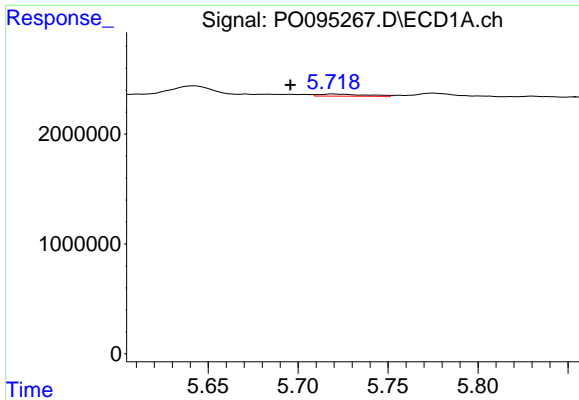
#20 AR-1242-5

R.T.: 6.637 min
 Delta R.T.: -0.007 min
 Response: 31542622
 Conc: 540.10 ng/ml



#20 AR-1242-5

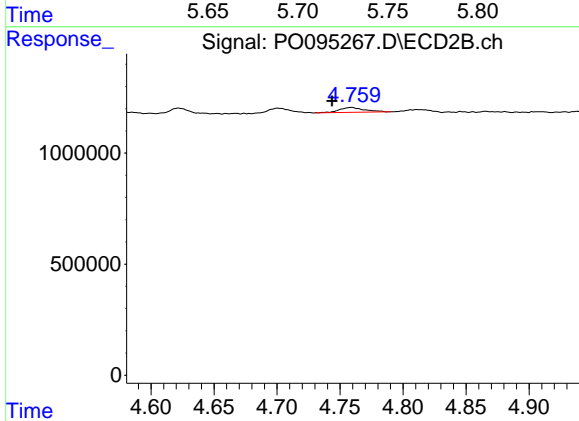
R.T.: 5.616 min
 Delta R.T.: 0.065 min
 Response: 361576
 Conc: 12.18 ng/ml



#21 AR-1248-1

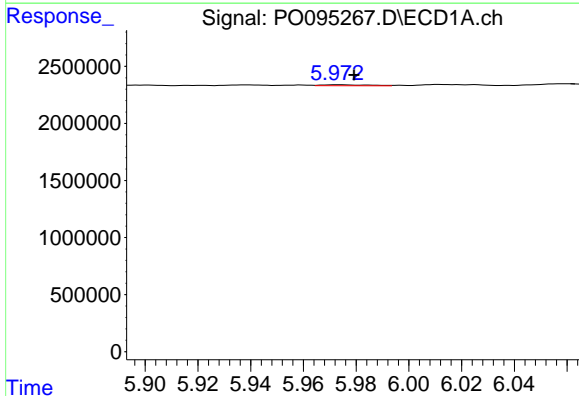
R.T.: 5.719 min
 Delta R.T.: 0.023 min
 Response: 345186
 Conc: 4.83 ng/ml

Instrument :
 ECD_O
 ClientSampleId :



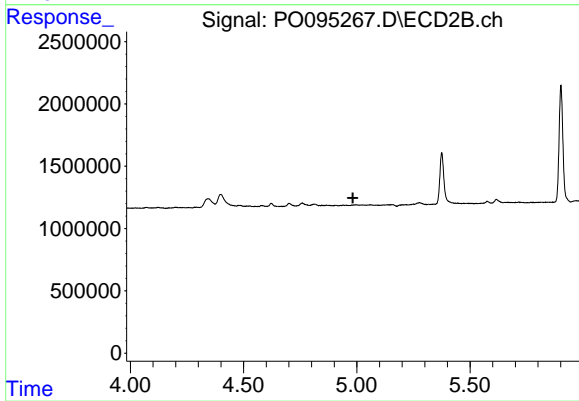
#21 AR-1248-1

R.T.: 4.759 min
 Delta R.T.: 0.015 min
 Response: 305656
 Conc: 11.14 ng/ml



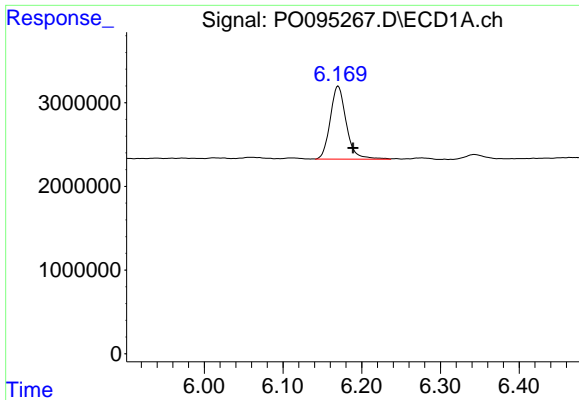
#22 AR-1248-2

R.T.: 5.974 min
 Delta R.T.: -0.006 min
 Response: 103342
 Conc: 0.97 ng/ml



#22 AR-1248-2

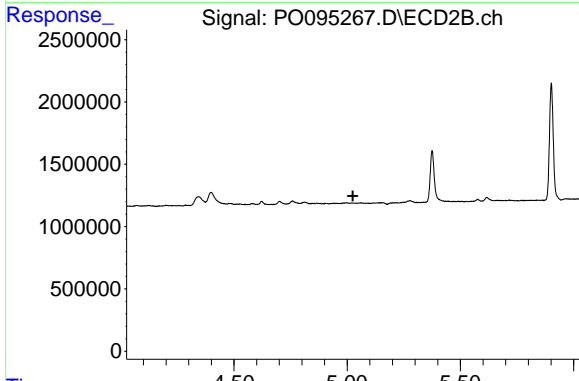
R.T.: 0.000 min
 Exp R.T. : 4.983 min
 Response: 0
 Conc: N.D.



#23 AR-1248-3

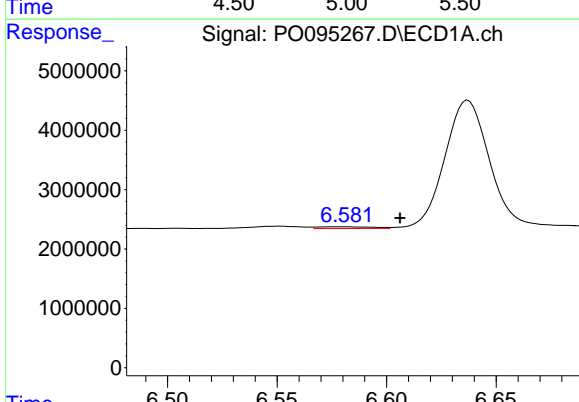
R.T.: 6.170 min
 Delta R.T.: -0.019 min
 Response: 12384459
 Conc: 107.94 ng/ml

Instrument :
 ECD_O
 ClientSampleId :



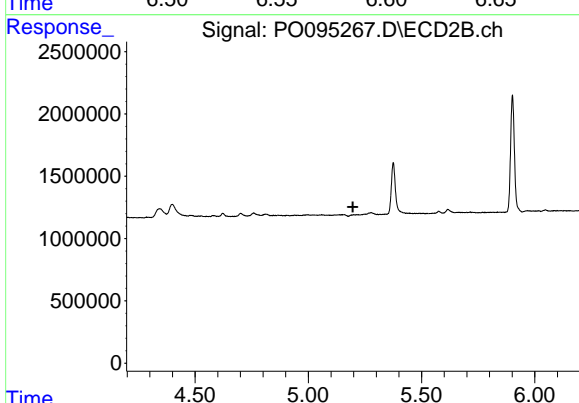
#23 AR-1248-3

R.T.: 0.000 min
 Exp R.T. : 5.025 min
 Response: 0
 Conc: N.D.



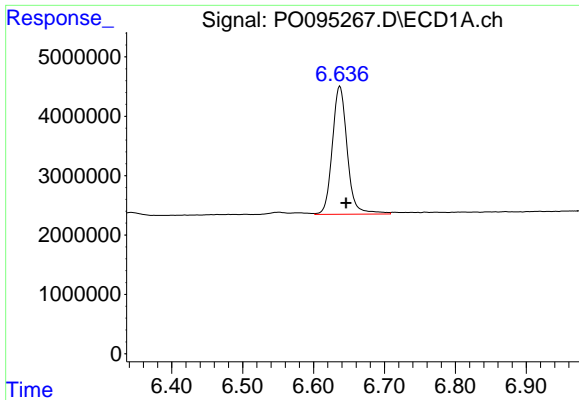
#24 AR-1248-4

R.T.: 6.581 min
 Delta R.T.: -0.025 min
 Response: 508364
 Conc: 4.03 ng/ml



#24 AR-1248-4

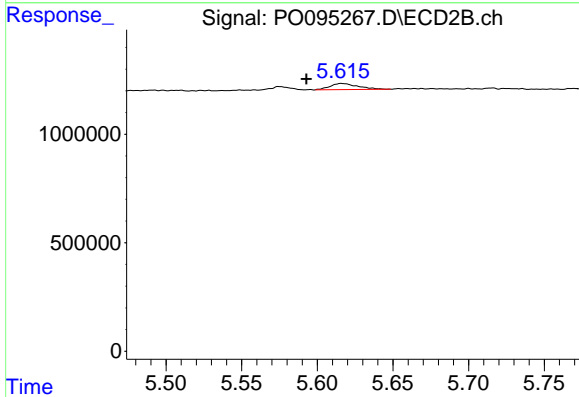
R.T.: 0.000 min
 Exp R.T. : 5.197 min
 Response: 0
 Conc: N.D.



#25 AR-1248-5

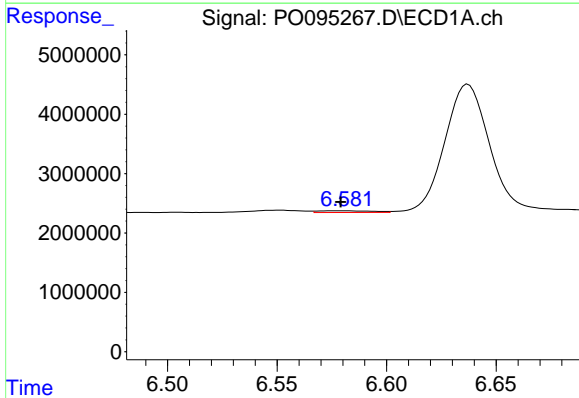
R.T.: 6.637 min
 Delta R.T.: -0.008 min
 Response: 31542622
 Conc: 258.67 ng/ml

Instrument :
 ECD_O
 ClientSampleId :



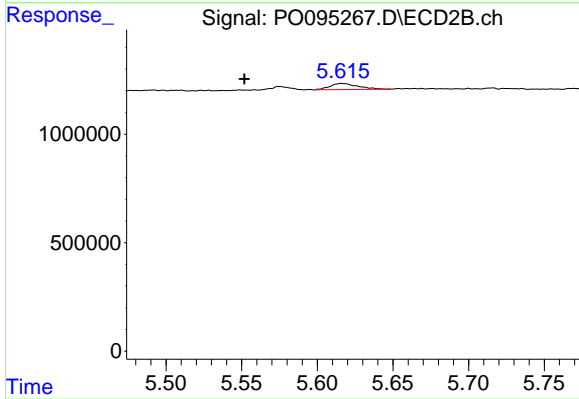
#25 AR-1248-5

R.T.: 5.616 min
 Delta R.T.: 0.024 min
 Response: 361576
 Conc: 8.08 ng/ml



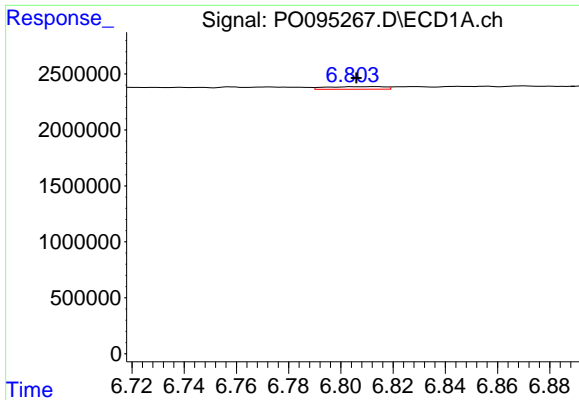
#26 AR-1254-1

R.T.: 6.581 min
 Delta R.T.: 0.002 min
 Response: 508364
 Conc: 4.49 ng/ml



#26 AR-1254-1

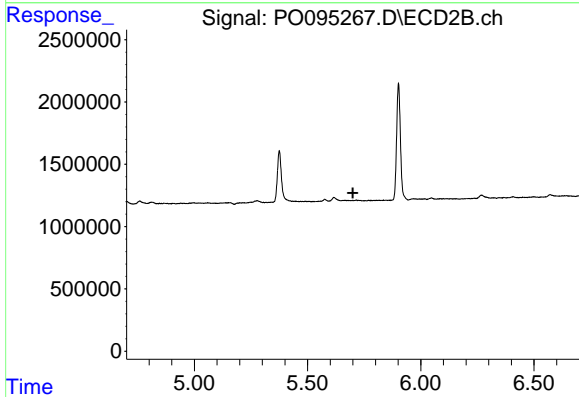
R.T.: 5.616 min
 Delta R.T.: 0.065 min
 Response: 361576
 Conc: 5.83 ng/ml



#27 AR-1254-2

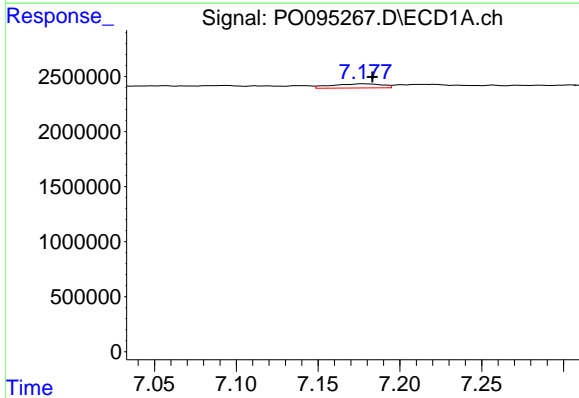
R.T.: 6.814 min
 Delta R.T.: 0.008 min
 Response: 362601
 Conc: 2.09 ng/ml

Instrument :
 ECD_O
 ClientSampleId :



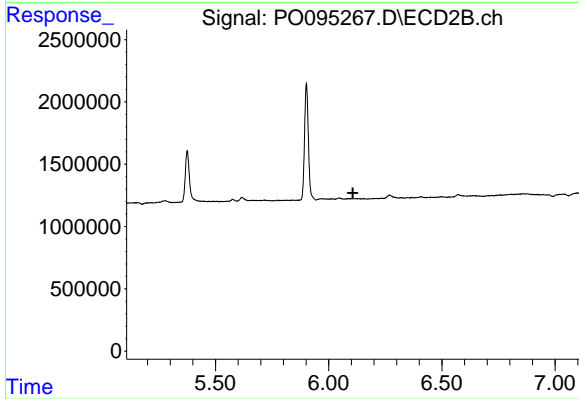
#27 AR-1254-2

R.T.: 0.000 min
 Exp R.T. : 5.700 min
 Response: 0
 Conc: N.D.



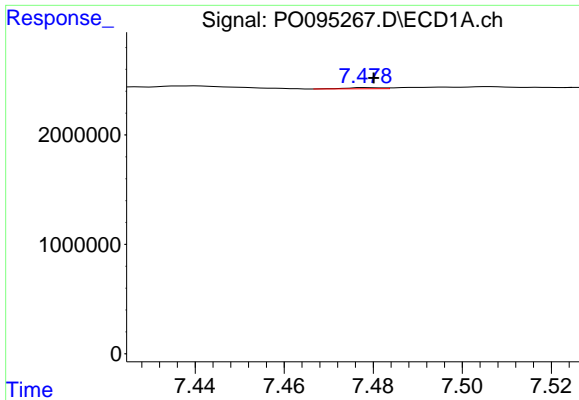
#28 AR-1254-3

R.T.: 7.178 min
 Delta R.T.: -0.006 min
 Response: 815796
 Conc: 4.65 ng/ml



#28 AR-1254-3

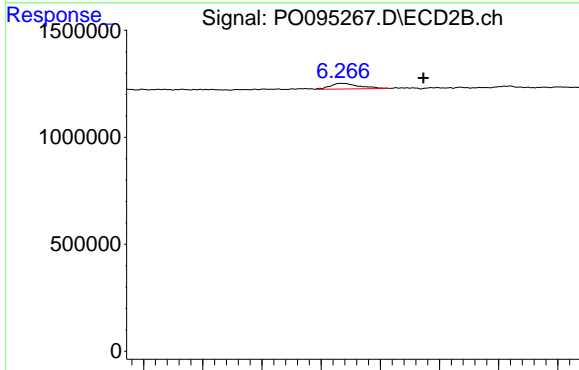
R.T.: 0.000 min
 Exp R.T. : 6.107 min
 Response: 0
 Conc: N.D.



#29 AR-1254-4

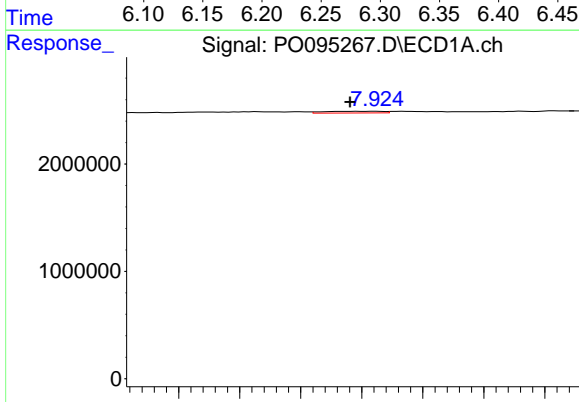
R.T.: 7.479 min
 Delta R.T.: -0.001 min
 Response: 60950
 Conc: 0.47 ng/ml

Instrument :
 ECD_O
 ClientSampleId :



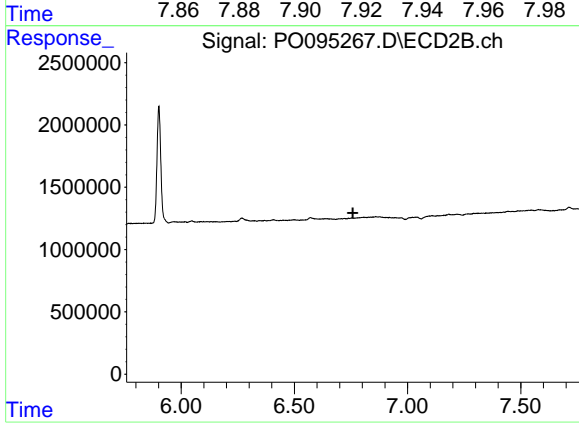
#29 AR-1254-4

R.T.: 6.267 min
 Delta R.T.: -0.069 min
 Response: 444610
 Conc: 8.56 ng/ml



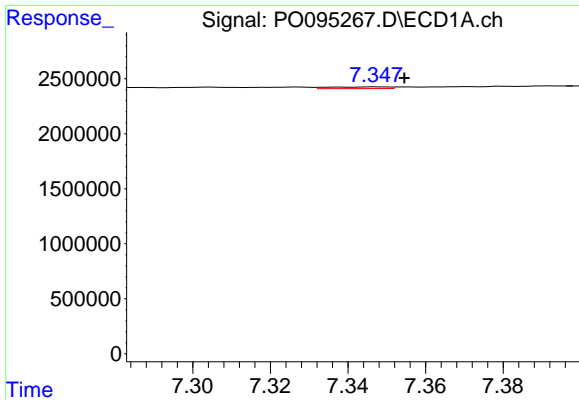
#30 AR-1254-5

R.T.: 7.924 min
 Delta R.T.: 0.008 min
 Response: 213721
 Conc: 1.29 ng/ml



#30 AR-1254-5

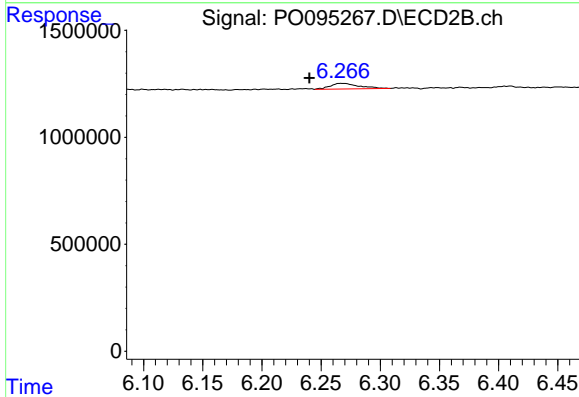
R.T.: 0.000 min
 Exp R.T. : 6.758 min
 Response: 0
 Conc: N.D.



#31 AR-1260-1

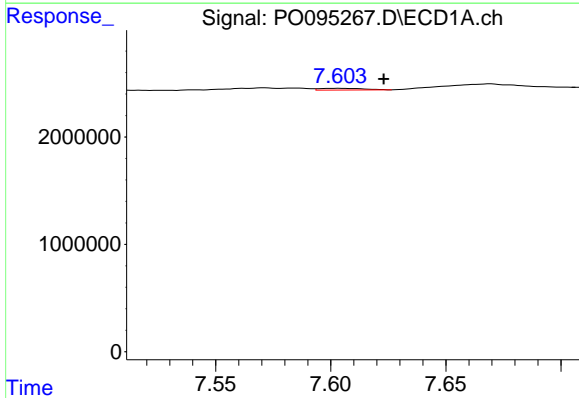
R.T.: 7.348 min
 Delta R.T.: -0.007 min
 Response: 165950
 Conc: 1.21 ng/ml

Instrument :
 ECD_O
 ClientSampleId :



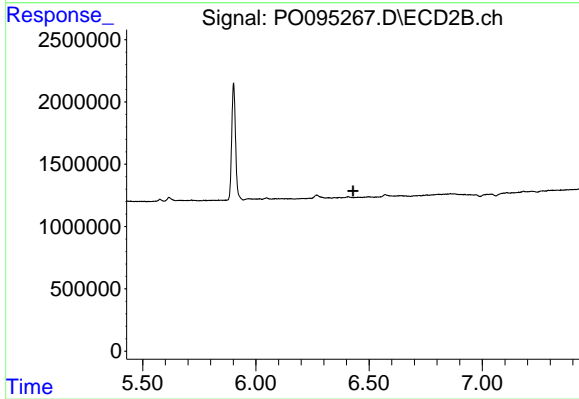
#31 AR-1260-1

R.T.: 6.267 min
 Delta R.T.: 0.027 min
 Response: 444610
 Conc: 7.31 ng/ml



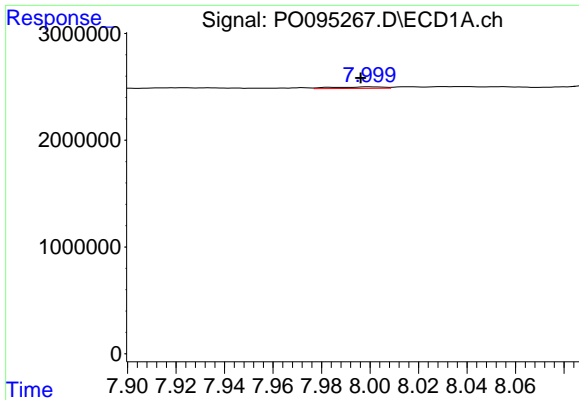
#32 AR-1260-2

R.T.: 7.604 min
 Delta R.T.: -0.019 min
 Response: 212176
 Conc: 1.32 ng/ml



#32 AR-1260-2

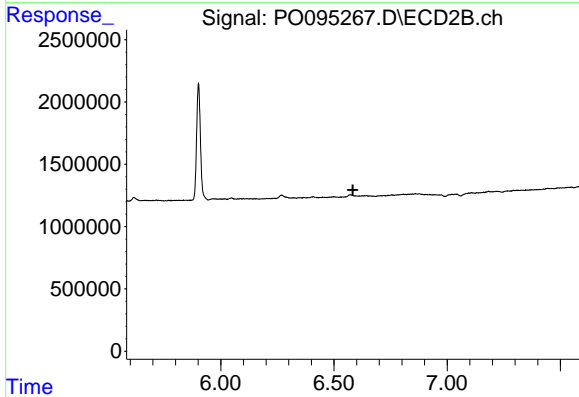
R.T.: 0.000 min
 Exp R.T. : 6.429 min
 Response: 0
 Conc: N.D.



#33 AR-1260-3

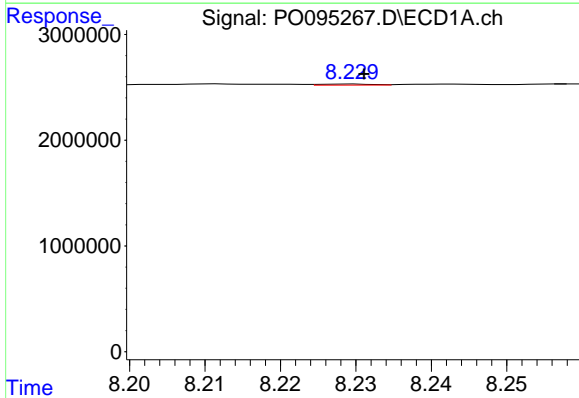
R.T.: 8.000 min
 Delta R.T.: 0.004 min
 Response: 214063
 Conc: 2.09 ng/ml

Instrument :
 ECD_O
 ClientSampleId :



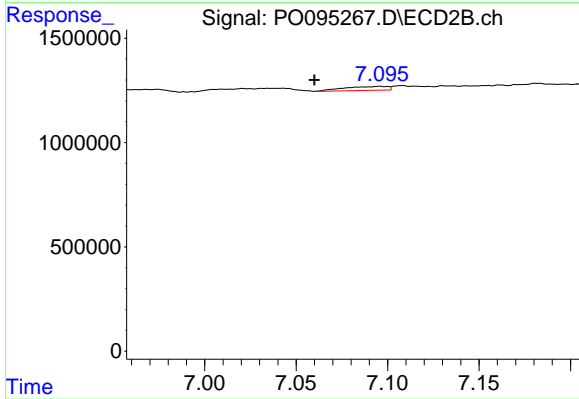
#33 AR-1260-3

R.T.: 0.000 min
 Exp R.T. : 6.584 min
 Response: 0
 Conc: N.D.



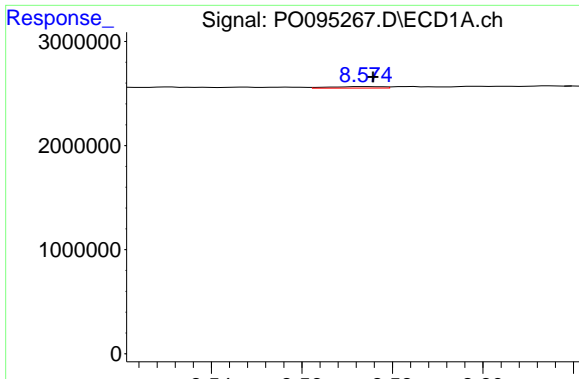
#34 AR-1260-4

R.T.: 8.229 min
 Delta R.T.: -0.002 min
 Response: 44090
 Conc: 0.31 ng/ml



#34 AR-1260-4

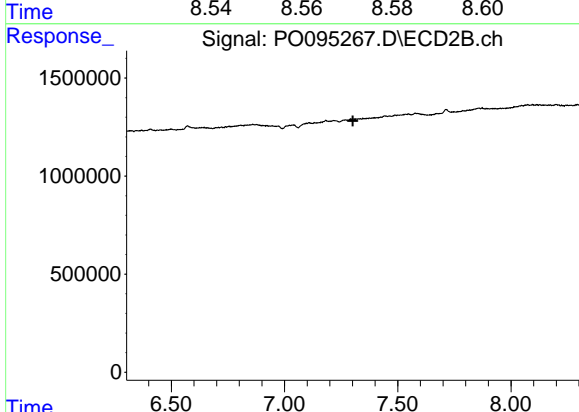
R.T.: 7.096 min
 Delta R.T.: 0.036 min
 Response: 309208
 Conc: 6.36 ng/ml



#35 AR-1260-5

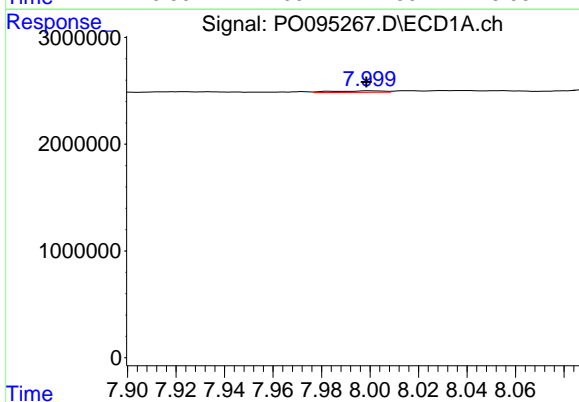
R.T.: 8.574 min
 Delta R.T.: -0.002 min
 Response: 124132
 Conc: 0.52 ng/ml

Instrument :
 ECD_O
 ClientSampleId :



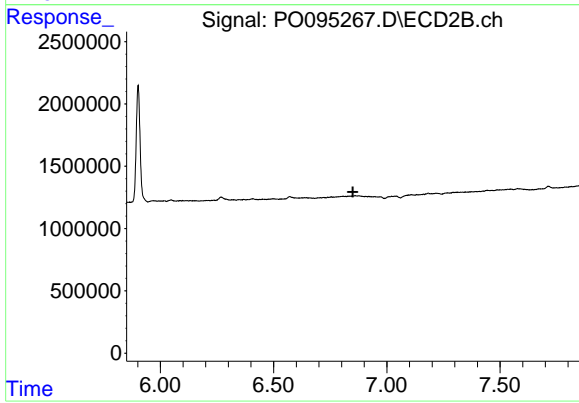
#35 AR-1260-5

R.T.: 0.000 min
 Exp R.T. : 7.302 min
 Response: 0
 Conc: N.D.



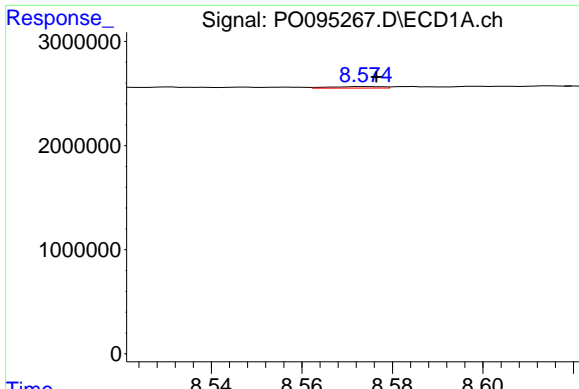
#36 AR-1262-1

R.T.: 8.000 min
 Delta R.T.: 0.002 min
 Response: 214063
 Conc: 1.22 ng/ml



#36 AR-1262-1

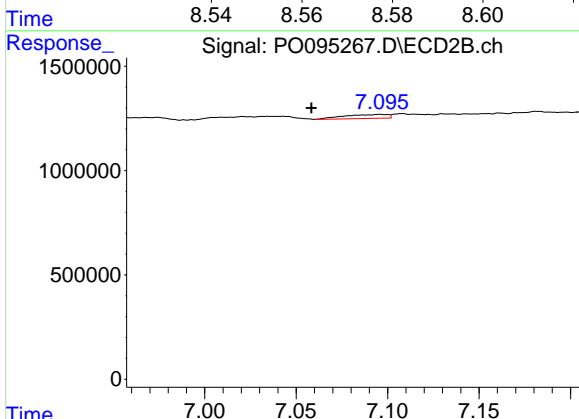
R.T.: 0.000 min
 Exp R.T. : 6.850 min
 Response: 0
 Conc: N.D.



#37 AR-1262-2

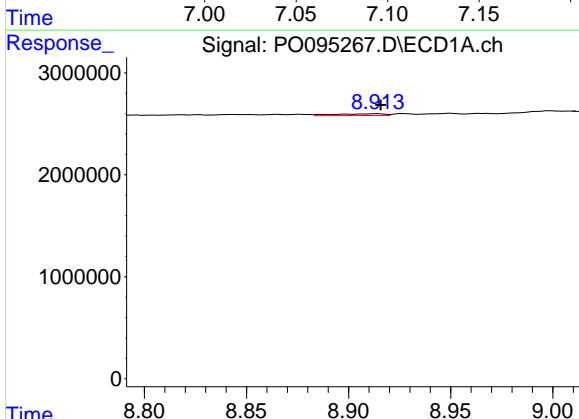
R.T.: 8.574 min
 Delta R.T.: -0.002 min
 Response: 124132
 Conc: 0.41 ng/ml

Instrument :
 ECD_O
 ClientSampleId :



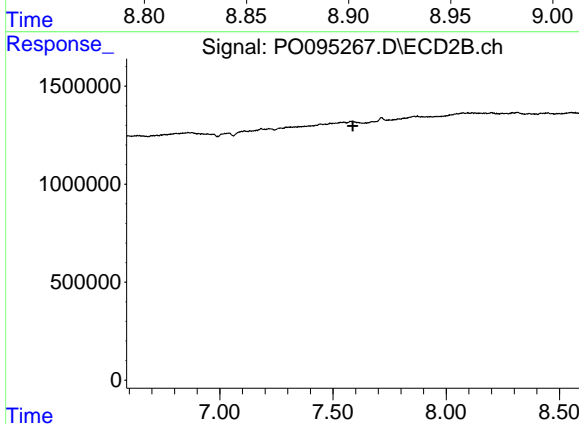
#37 AR-1262-2

R.T.: 7.096 min
 Delta R.T.: 0.037 min
 Response: 309208
 Conc: 4.45 ng/ml



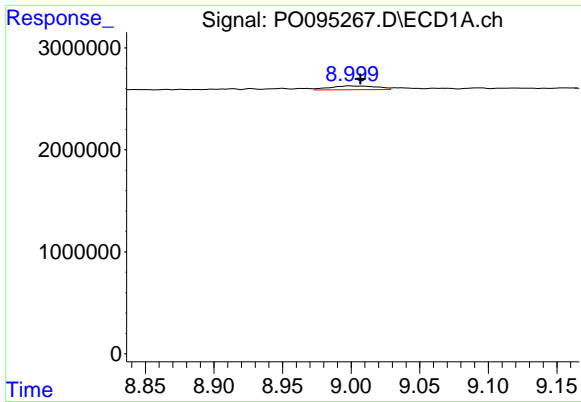
#38 AR-1262-3

R.T.: 8.914 min
 Delta R.T.: -0.002 min
 Response: 296248
 Conc: 1.41 ng/ml



#38 AR-1262-3

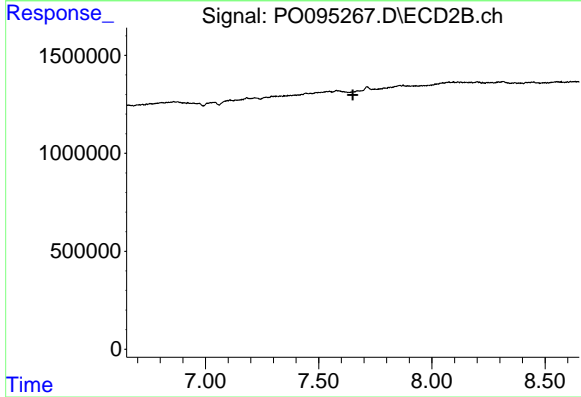
R.T.: 0.000 min
 Exp R.T. : 7.588 min
 Response: 0
 Conc: N.D.



#39 AR-1262-4

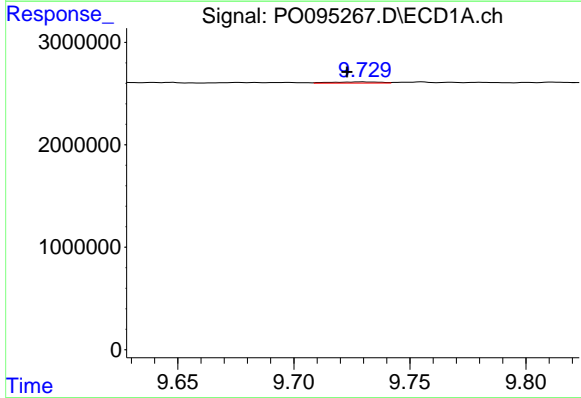
R.T.: 8.999 min
 Delta R.T.: -0.008 min
 Response: 874842
 Conc: 5.37 ng/ml

Instrument :
 ECD_O
 ClientSampleId :



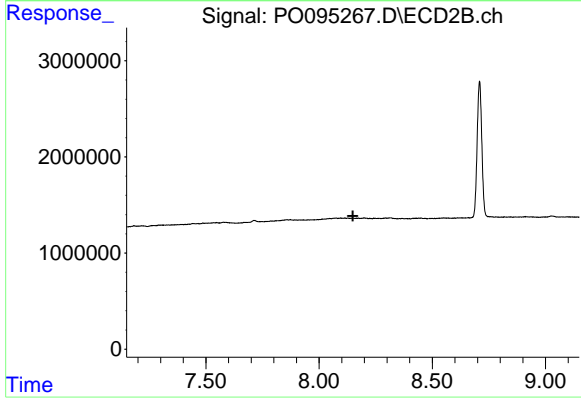
#39 AR-1262-4

R.T.: 0.000 min
 Exp R.T. : 7.651 min
 Response: 0
 Conc: N.D.



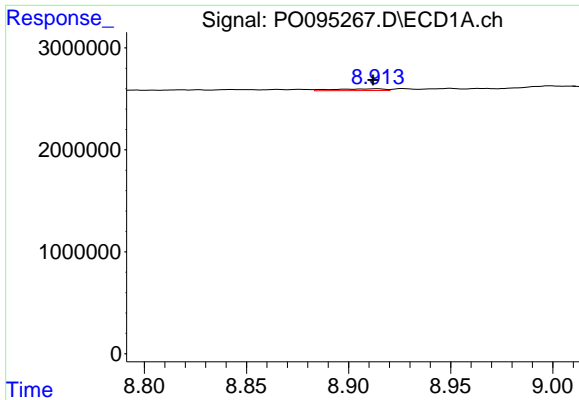
#40 AR-1262-5

R.T.: 9.730 min
 Delta R.T.: 0.007 min
 Response: 163544
 Conc: 1.52 ng/ml



#40 AR-1262-5

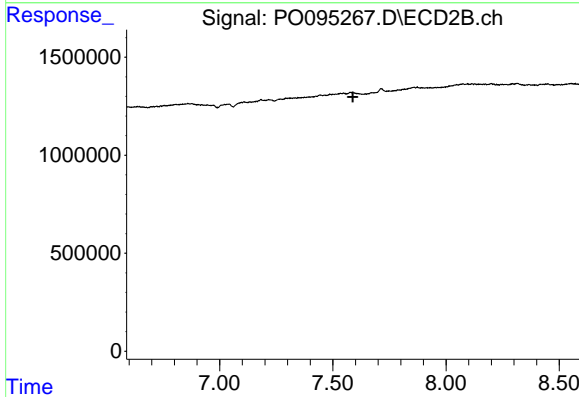
R.T.: 0.000 min
 Exp R.T. : 8.149 min
 Response: 0
 Conc: N.D.



#41 AR-1268-1

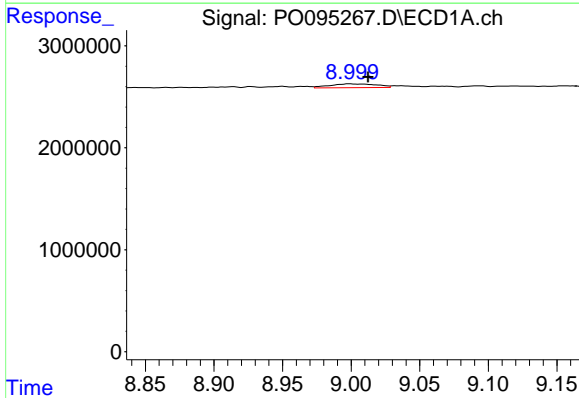
R.T.: 8.914 min
 Delta R.T.: 0.002 min
 Response: 296248
 Conc: 0.84 ng/ml

Instrument :
 ECD_O
 ClientSampleId :



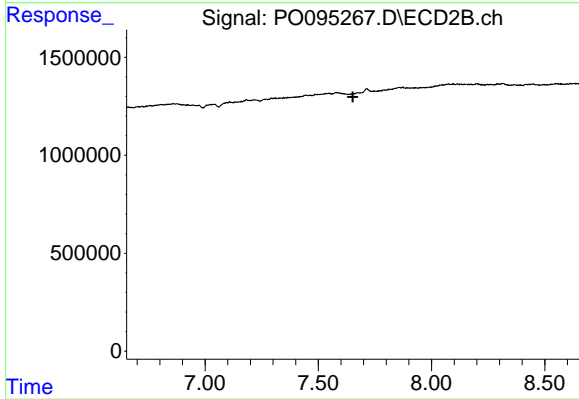
#41 AR-1268-1

R.T.: 0.000 min
 Exp R.T. : 7.588 min
 Response: 0
 Conc: N.D.



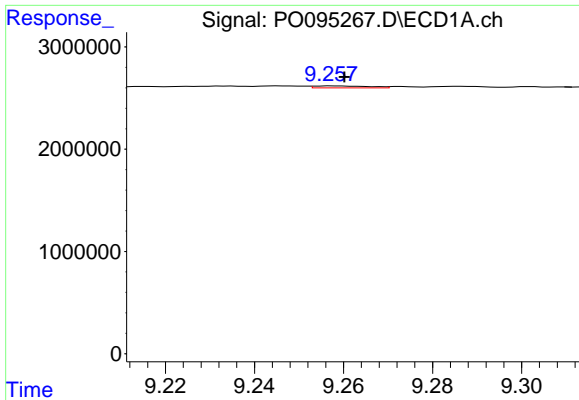
#42 AR-1268-2

R.T.: 8.999 min
 Delta R.T.: -0.013 min
 Response: 874842
 Conc: 2.70 ng/ml



#42 AR-1268-2

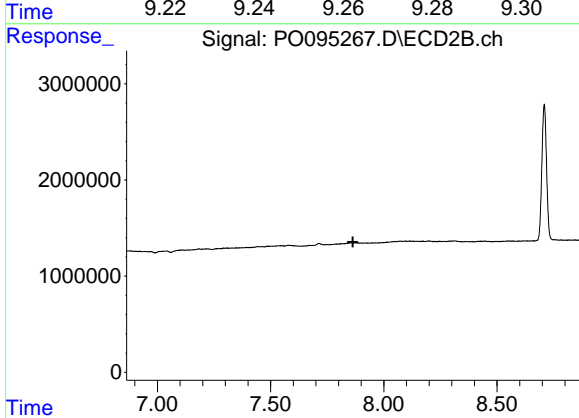
R.T.: 0.000 min
 Exp R.T. : 7.653 min
 Response: 0
 Conc: N.D.



#43 AR-1268-3

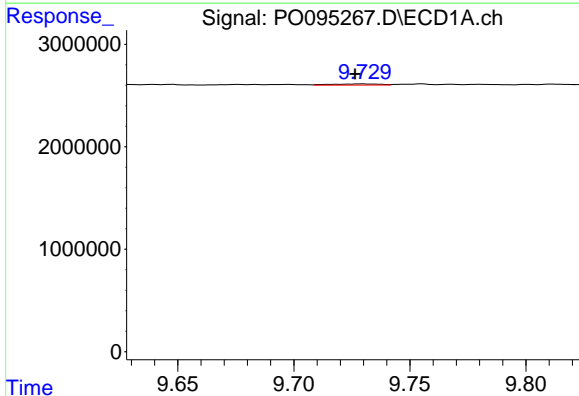
R.T.: 9.258 min
 Delta R.T.: -0.003 min
 Response: 168097
 Conc: 0.61 ng/ml

Instrument :
 ECD_O
 ClientSampleId :



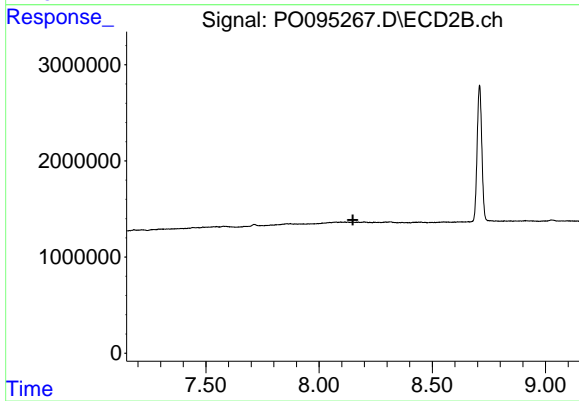
#43 AR-1268-3

R.T.: 0.000 min
 Exp R.T. : 7.863 min
 Response: 0
 Conc: N.D.



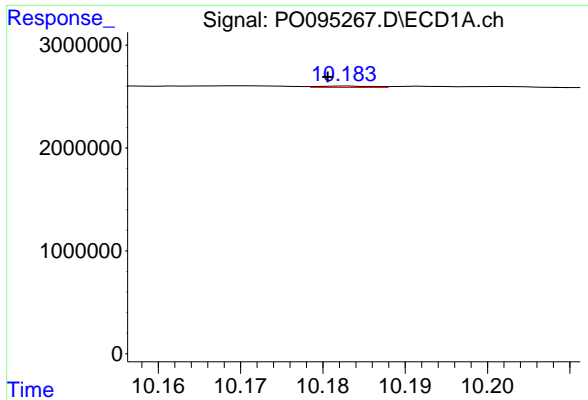
#44 AR-1268-4

R.T.: 9.730 min
 Delta R.T.: 0.003 min
 Response: 163544
 Conc: 1.38 ng/ml



#44 AR-1268-4

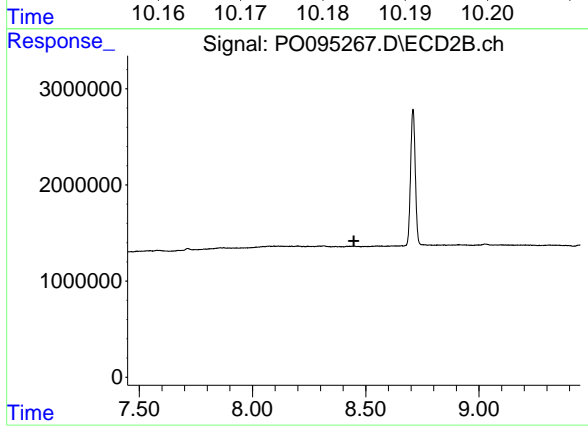
R.T.: 0.000 min
 Exp R.T. : 8.150 min
 Response: 0
 Conc: N.D.



#45 AR-1268-5

R.T.: 10.183 min
 Delta R.T.: 0.002 min
 Response: 64924
 Conc: 0.07 ng/ml

Instrument :
 ECD_O
 ClientSampleId :



#45 AR-1268-5

R.T.: 0.000 min
 Exp R.T. : 8.448 min
 Response: 0
 Conc: N.D.