

Data Path : Z:\pestpcbsrv\HPCHEM1\ECD_0\Data\P0052422\
 Data File : P0086497.D
 Signal(s) : Signal #1: ECD1A.CH Signal #2: ECD2B.CH
 Acq On : 24 May 2022 18:41
 Operator : YP\AJ
 Sample : N2894-23
 Misc :
 ALS Vial : 33 Sample Multiplier: 1

Instrument :
 ECD_0
ClientSampleId :
 P008-SS003-2430-01

Integration File signal 1: autoint1.e
 Integration File signal 2: autoint2.e
 Quant Time: May 25 02:37:09 2022
 Quant Method : Z:\pestpcbsrv\HPCHEM1\ECD_0\methods\P0051122.M
 Quant Title : GC EXTRACTABLES
 QLast Update : Thu May 19 09:06:34 2022
 Response via : Initial Calibration
 Integrator: ChemStation 6890 Scale Mode: Small noise peaks clipped

Volume Inj. : 2 µl
 Signal #1 Phase : ZB-MR1 Signal #2 Phase: ZB-MR2
 Signal #1 Info : 30Mx0.32mmx 0.50µ Signal #2 Info : 30M x 0.32mm x 0.25µm

Compound	RT#1	RT#2	Resp#1	Resp#2	ng/ml	ng/ml

System Monitoring Compounds						
1) SA Tetrachlo...	4.478	3.674	2443487	1001525	24.048	22.993
2) SA Decachlor...	10.329	8.724	1224302	702853	22.547	20.197

Target Compounds

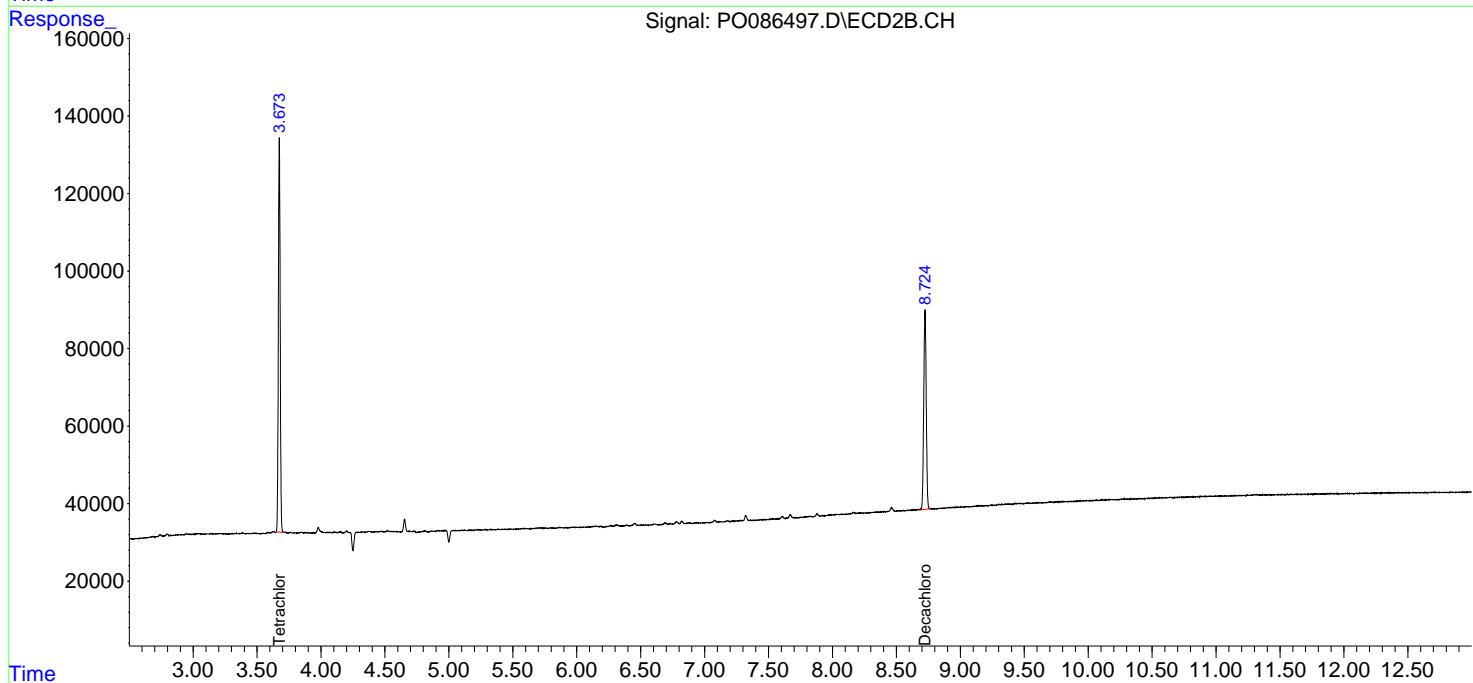
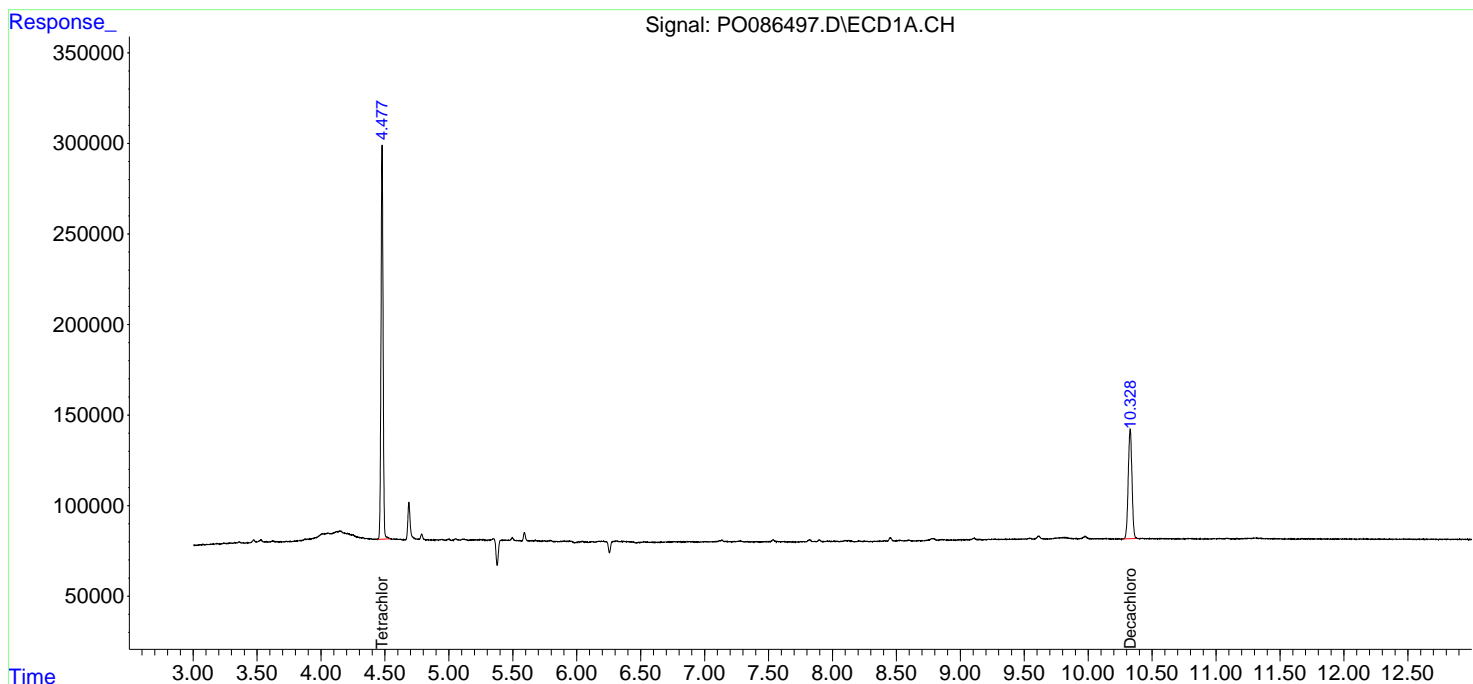
 (f)=RT Delta > 1/2 Window (#)=Amounts differ by > 25% (m)=manual int.

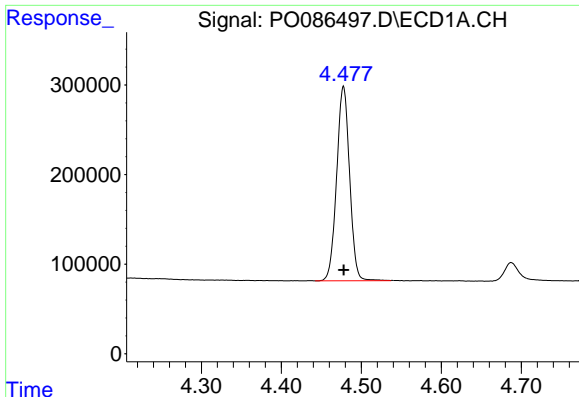
Data Path : Z:\pestpcbsrv\HPCHEM1\ECD_0\Data\P0052422\
 Data File : P0086497.D
 Signal(s) : Signal #1: ECD1A.CH Signal #2: ECD2B.CH
 Acq On : 24 May 2022 18:41
 Operator : YP\AJ
 Sample : N2894-23
 Misc :
 ALS Vial : 33 Sample Multiplier: 1

Instrument :
 ECD_0
 ClientSampleId :
 P008-SS003-2430-01

Integration File signal 1: autoint1.e
 Integration File signal 2: autoint2.e
 Quant Time: May 25 02:37:09 2022
 Quant Method : Z:\pestpcbsrv\HPCHEM1\ECD_0\methods\P0051122.M
 Quant Title : GC EXTRACTABLES
 QLast Update : Thu May 19 09:06:34 2022
 Response via : Initial Calibration
 Integrator: ChemStation 6890 Scale Mode: Small noise peaks clipped

Volume Inj. : 2 µl
 Signal #1 Phase : ZB-MR1 Signal #2 Phase: ZB-MR2
 Signal #1 Info : 30Mx0.32mmx 0.50µ Signal #2 Info : 30M x 0.32mm x 0.25µm

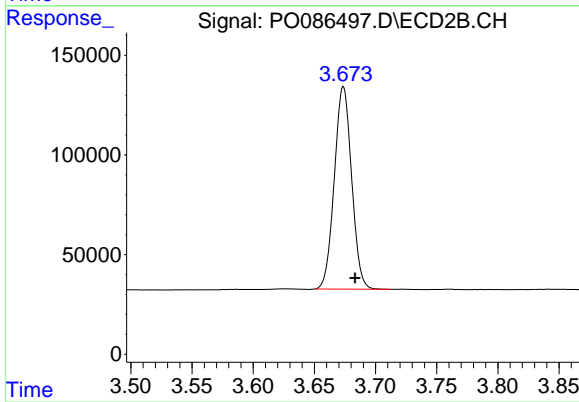




#1 Tetrachloro-m-xylene

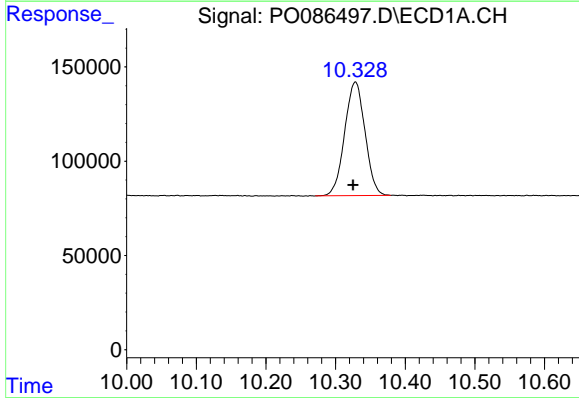
R.T.: 4.478 min
 Delta R.T.: 0.000 min
 Response: 2443487
 Conc: 24.05 ng/ml

Instrument :
 ECD_O
 ClientSampleId :
 P008-SS003-2430-01



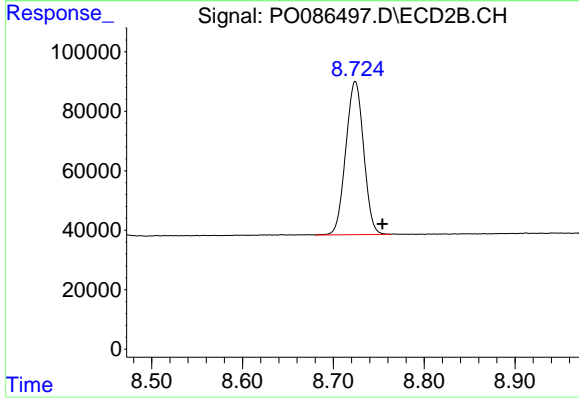
#1 Tetrachloro-m-xylene

R.T.: 3.674 min
 Delta R.T.: -0.010 min
 Response: 1001525
 Conc: 22.99 ng/ml



#2 Decachlorobiphenyl

R.T.: 10.329 min
 Delta R.T.: 0.003 min
 Response: 1224302
 Conc: 22.55 ng/ml



#2 Decachlorobiphenyl

R.T.: 8.724 min
 Delta R.T.: -0.030 min
 Response: 702853
 Conc: 20.20 ng/ml