

Data Path : Z:\pestpcbsrv\HPCHEM1\ECD\_0\Data\P0052422\  
 Data File : P0086498.D  
 Signal(s) : Signal #1: ECD1A.CH Signal #2: ECD2B.CH  
 Acq On : 24 May 2022 18:57  
 Operator : YP\AJ  
 Sample : N2894-24  
 Misc :  
 ALS Vial : 34 Sample Multiplier: 1

**Instrument :**  
 ECD\_0  
**ClientSampleId :**  
 P008-SS004-0006-01

**Manual Integrations**  
**APPROVED**

Reviewed By :Yogesh Patel 05/25/2022  
 Supervised By :Ankita Jodhani 05/25/2022

Integration File signal 1: autoint1.e  
 Integration File signal 2: autoint2.e  
 Quant Time: May 25 02:37:33 2022  
 Quant Method : Z:\pestpcbsrv\HPCHEM1\ECD\_0\methods\P0051122.M  
 Quant Title : GC EXTRACTABLES  
 QLast Update : Thu May 19 09:06:34 2022  
 Response via : Initial Calibration  
 Integrator: ChemStation 6890 Scale Mode: Small noise peaks clipped

Volume Inj. : 2 µl  
 Signal #1 Phase : ZB-MR1 Signal #2 Phase: ZB-MR2  
 Signal #1 Info : 30Mx0.32mmx 0.50µ Signal #2 Info : 30M x 0.32mm x 0.25µm

Compound	RT#1	RT#2	Resp#1	Resp#2	ng/ml	ng/ml
-----						
System Monitoring Compounds						
1) SA Tetrachlo...	4.478	3.674	2420649	992906	23.824	22.795
2) SA Decachlor...	10.328	8.723	1320692	762121	24.323	21.900
Target Compounds						
31) L7 AR-1260-1	7.278	6.266	835616	455839	276.108	234.206
32) L7 AR-1260-2	7.536	6.454	1540150	868986	425.751	369.731
33) L7 AR-1260-3	7.899	6.610	1373315	544816	497.578	253.371 #
34) L7 AR-1260-4	8.127	7.081	1405749	656258	416.644	364.459m
35) L7 AR-1260-5	8.454	7.323	2646297	1817077	428.847	419.472
-----						

(f)=RT Delta > 1/2 Window (#)=Amounts differ by > 25% (m)=manual int.

Data Path : Z:\pestpcbsrv\HPCHEM1\ECD\_0\Data\P0052422\  
 Data File : P0086498.D  
 Signal(s) : Signal #1: ECD1A.CH Signal #2: ECD2B.CH  
 Acq On : 24 May 2022 18:57  
 Operator : YP\AJ  
 Sample : N2894-24  
 Misc :  
 ALS Vial : 34 Sample Multiplier: 1

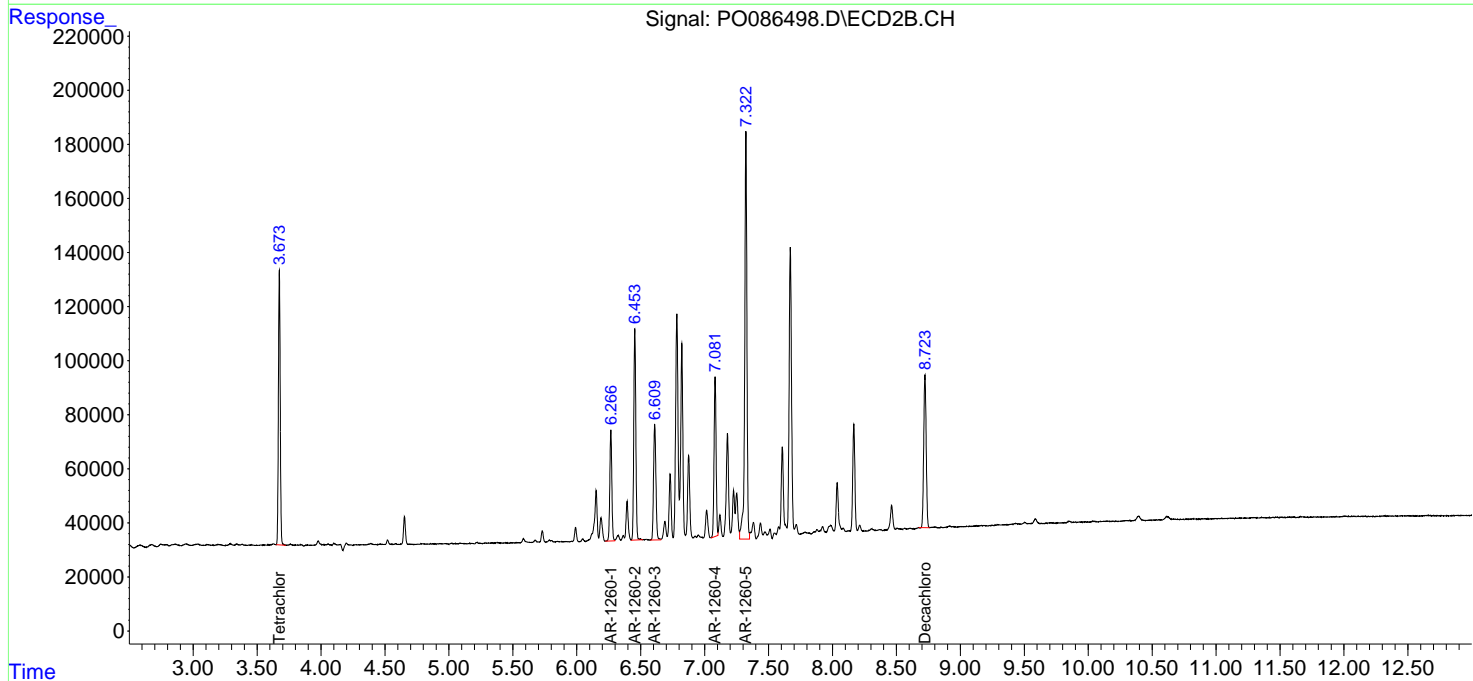
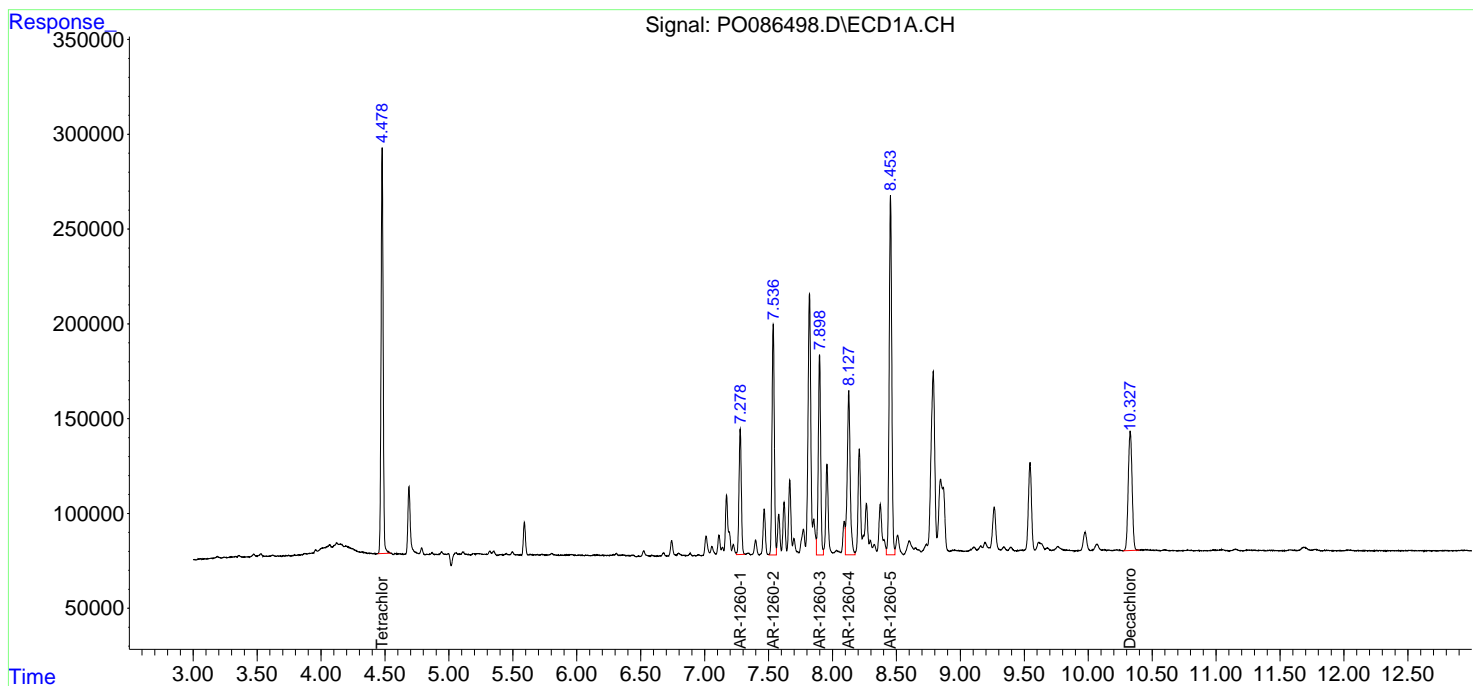
Instrument :  
 ECD\_0  
 ClientSampleId :  
 P008-SS004-0006-01

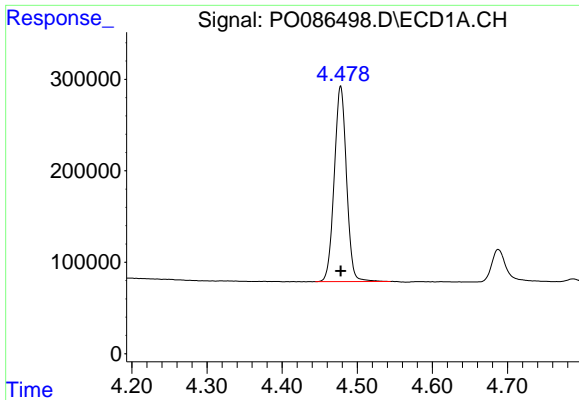
Manual Integrations  
 APPROVED

Reviewed By :Yogesh Patel 05/25/2022  
 Supervised By :Ankita Jodhani 05/25/2022

Integration File signal 1: autoint1.e  
 Integration File signal 2: autoint2.e  
 Quant Time: May 25 02:37:33 2022  
 Quant Method : Z:\pestpcbsrv\HPCHEM1\ECD\_0\methods\P0051122.M  
 Quant Title : GC EXTRACTABLES  
 QLast Update : Thu May 19 09:06:34 2022  
 Response via : Initial Calibration  
 Integrator: ChemStation 6890 Scale Mode: Small noise peaks clipped

Volume Inj. : 2 µl  
 Signal #1 Phase : ZB-MR1 Signal #2 Phase: ZB-MR2  
 Signal #1 Info : 30Mx0.32mmx 0.50µ Signal #2 Info : 30M x 0.32mm x 0.25µm



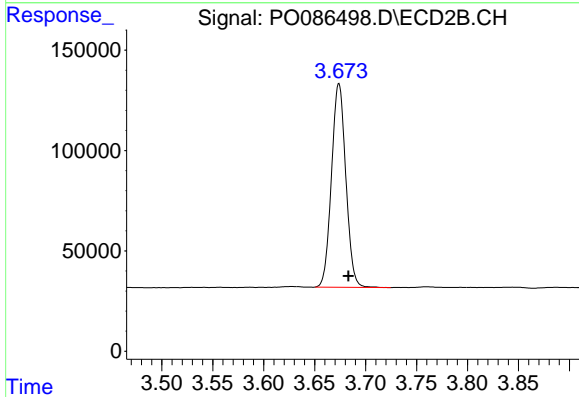


#1 Tetrachloro-m-xylene  
 R.T.: 4.478 min  
 Delta R.T.: 0.000 min  
 Response: 2420649  
 Conc: 23.82 ng/ml

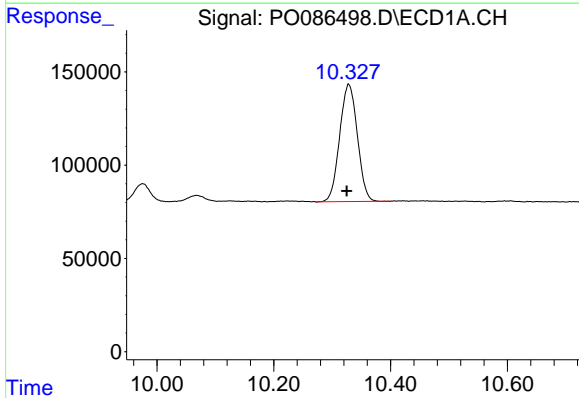
Instrument :  
 ECD\_O  
 ClientSampleId :  
 P008-SS004-0006-01

Manual Integrations  
 APPROVED

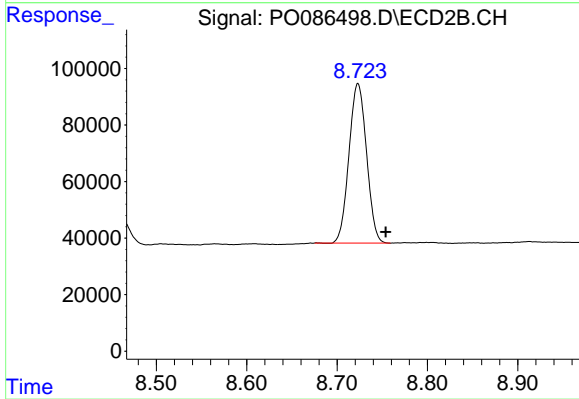
Reviewed By :Yogesh Patel 05/25/2022  
 Supervised By :Ankita Jodhani 05/25/2022



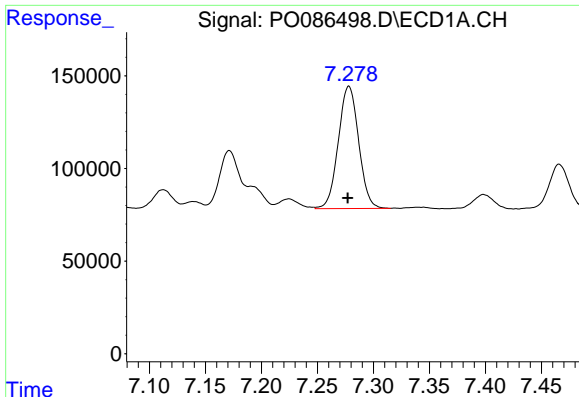
#1 Tetrachloro-m-xylene  
 R.T.: 3.674 min  
 Delta R.T.: -0.009 min  
 Response: 992906  
 Conc: 22.80 ng/ml



#2 Decachlorobiphenyl  
 R.T.: 10.328 min  
 Delta R.T.: 0.003 min  
 Response: 1320692  
 Conc: 24.32 ng/ml



#2 Decachlorobiphenyl  
 R.T.: 8.723 min  
 Delta R.T.: -0.031 min  
 Response: 762121  
 Conc: 21.90 ng/ml



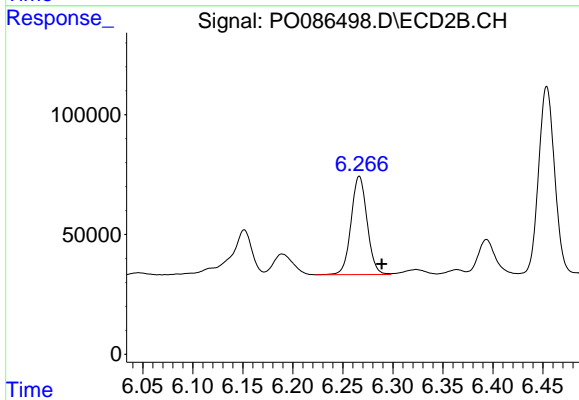
#31 AR-1260-1

R.T.: 7.278 min  
 Delta R.T.: 0.001 min  
 Response: 835616  
 Conc: 276.11 ng/ml

Instrument :  
 ECD\_O  
 ClientSampleId :  
 P008-SS004-0006-01

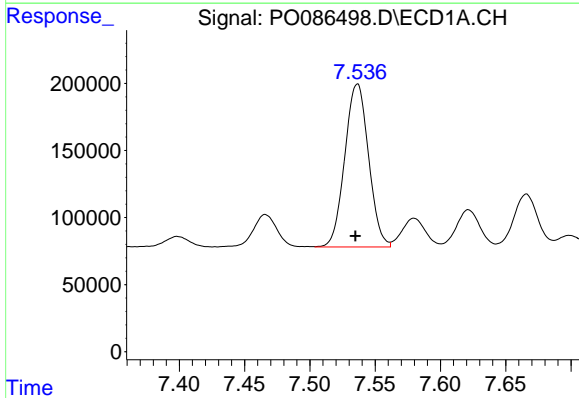
Manual Integrations  
 APPROVED

Reviewed By :Yogesh Patel 05/25/2022  
 Supervised By :Ankita Jodhani 05/25/2022



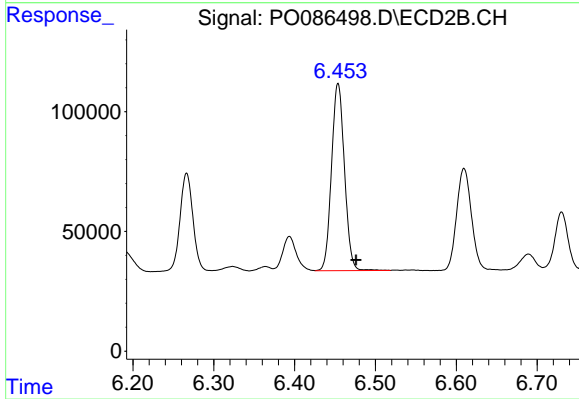
#31 AR-1260-1

R.T.: 6.266 min  
 Delta R.T.: -0.022 min  
 Response: 455839  
 Conc: 234.21 ng/ml



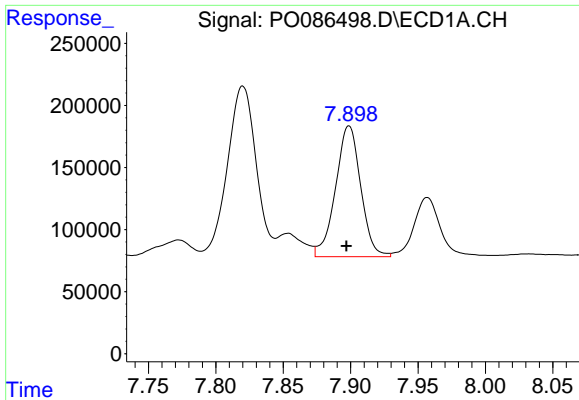
#32 AR-1260-2

R.T.: 7.536 min  
 Delta R.T.: 0.002 min  
 Response: 1540150  
 Conc: 425.75 ng/ml



#32 AR-1260-2

R.T.: 6.454 min  
 Delta R.T.: -0.022 min  
 Response: 868986  
 Conc: 369.73 ng/ml



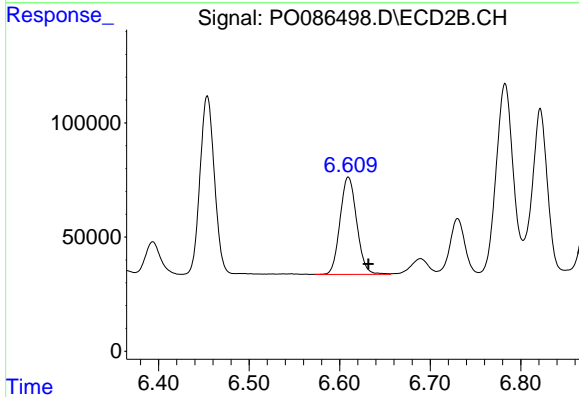
#33 AR-1260-3

R.T.: 7.899 min  
 Delta R.T.: 0.002 min  
 Response: 1373315  
 Conc: 497.58 ng/ml

Instrument :  
 ECD\_O  
 ClientSampleId :  
 P008-SS004-0006-01

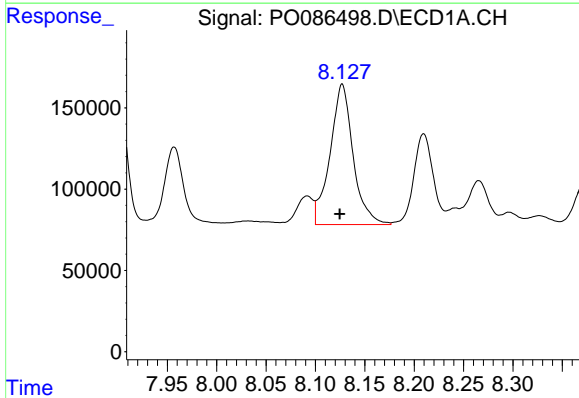
Manual Integrations  
 APPROVED

Reviewed By :Yogesh Patel 05/25/2022  
 Supervised By :Ankita Jodhani 05/25/2022



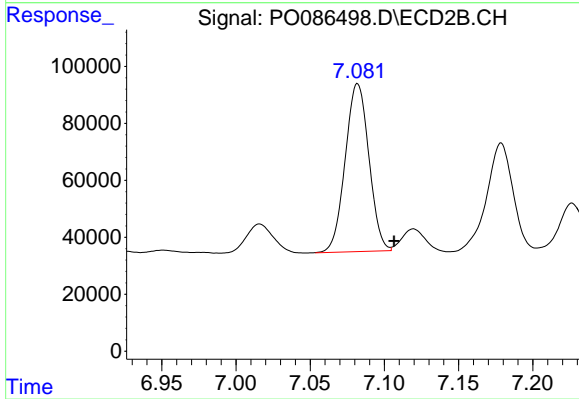
#33 AR-1260-3

R.T.: 6.610 min  
 Delta R.T.: -0.022 min  
 Response: 544816  
 Conc: 253.37 ng/ml



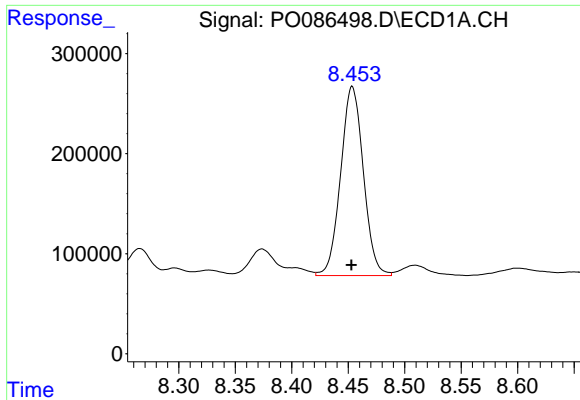
#34 AR-1260-4

R.T.: 8.127 min  
 Delta R.T.: 0.003 min  
 Response: 1405749  
 Conc: 416.64 ng/ml



#34 AR-1260-4

R.T.: 7.081 min  
 Delta R.T.: -0.025 min  
 Response: 656258  
 Conc: 364.46 ng/ml m



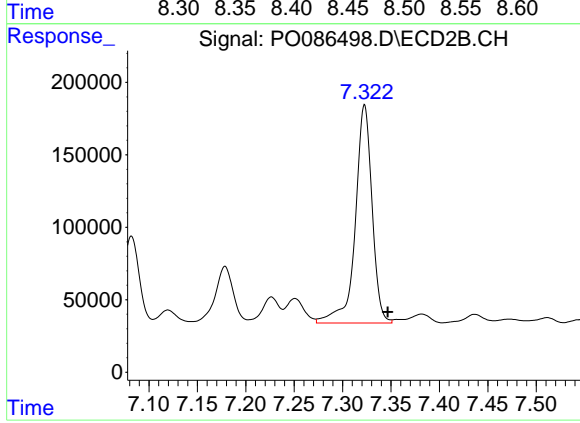
#35 AR-1260-5

R.T.: 8.454 min  
 Delta R.T.: 0.000 min  
 Response: 2646297  
 Conc: 428.85 ng/ml

Instrument :  
 ECD\_O  
 ClientSampleId :  
 P008-SS004-0006-01

Manual Integrations  
 APPROVED

Reviewed By :Yogesh Patel 05/25/2022  
 Supervised By :Ankita Jodhani 05/25/2022



#35 AR-1260-5

R.T.: 7.323 min  
 Delta R.T.: -0.024 min  
 Response: 1817077  
 Conc: 419.47 ng/ml