

Data Path : Z:\pestpcbsrv\HPCHEM1\ECD_0\Data\P0052422\
 Data File : P0086509.D
 Signal(s) : Signal #1: ECD1A.CH Signal #2: ECD2B.CH
 Acq On : 24 May 2022 22:44
 Operator : YP\AJ
 Sample : N2896-09
 Misc :
 ALS Vial : 43 Sample Multiplier: 1

Instrument :
 ECD_0
ClientSampleId :
 P038-SS001-1218-01

Manual Integrations
APPROVED

Reviewed By :Yogesh Patel 05/25/2022
 Supervised By :Ankita Jodhani 05/25/2022

Integration File signal 1: autoint1.e
 Integration File signal 2: autoint2.e
 Quant Time: May 25 02:42:02 2022
 Quant Method : Z:\pestpcbsrv\HPCHEM1\ECD_0\methods\P0051122.M
 Quant Title : GC EXTRACTABLES
 QLast Update : Thu May 19 09:06:34 2022
 Response via : Initial Calibration
 Integrator: ChemStation 6890 Scale Mode: Small noise peaks clipped

Volume Inj. : 2 µl
 Signal #1 Phase : ZB-MR1 Signal #2 Phase: ZB-MR2
 Signal #1 Info : 30Mx0.32mmx 0.50µ Signal #2 Info : 30M x 0.32mm x 0.25µm

Compound	RT#1	RT#2	Resp#1	Resp#2	ng/ml	ng/ml

System Monitoring Compounds						
1) SA Tetrachlo...	4.476	3.672	2391048	994647	23.532	22.835
2) SA Decachlor...	10.326	8.722	957096	569676	17.626	16.370
Target Compounds						
31) L7 AR-1260-1	7.274	6.266	41765	16963	13.800	8.715 #
32) L7 AR-1260-2	7.532	6.452	60882	32624	16.830	13.881
33) L7 AR-1260-3	7.897	6.608	86131	17897	31.207	8.323 #
34) L7 AR-1260-4	8.125	7.080	59092	30571	17.514	16.978
35) L7 AR-1260-5	8.453	7.320	155456	84539	25.193	19.516m

(f)=RT Delta > 1/2 Window (#)=Amounts differ by > 25% (m)=manual int.

Data Path : Z:\pestpcbsrv\HPCHEM1\ECD_0\Data\P0052422\
 Data File : P0086509.D
 Signal(s) : Signal #1: ECD1A.CH Signal #2: ECD2B.CH
 Acq On : 24 May 2022 22:44
 Operator : YP\AJ
 Sample : N2896-09
 Misc :
 ALS Vial : 43 Sample Multiplier: 1

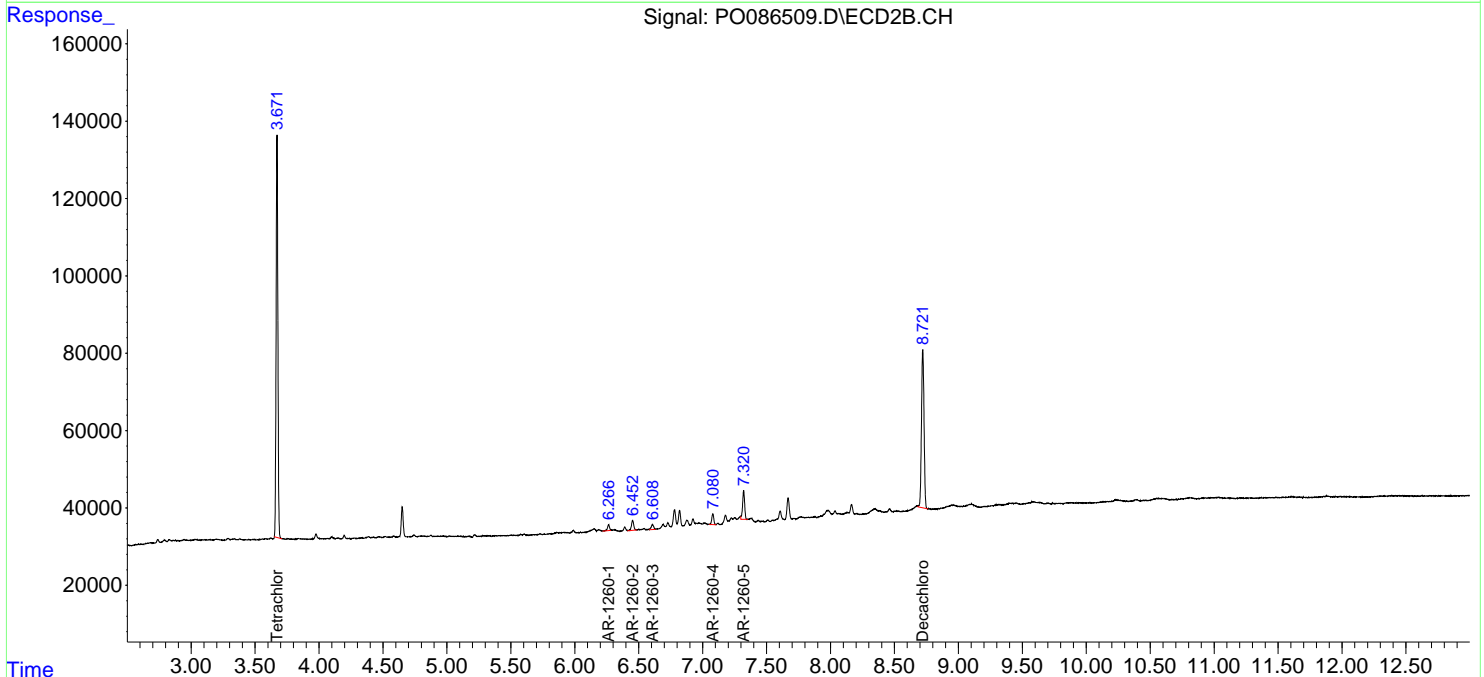
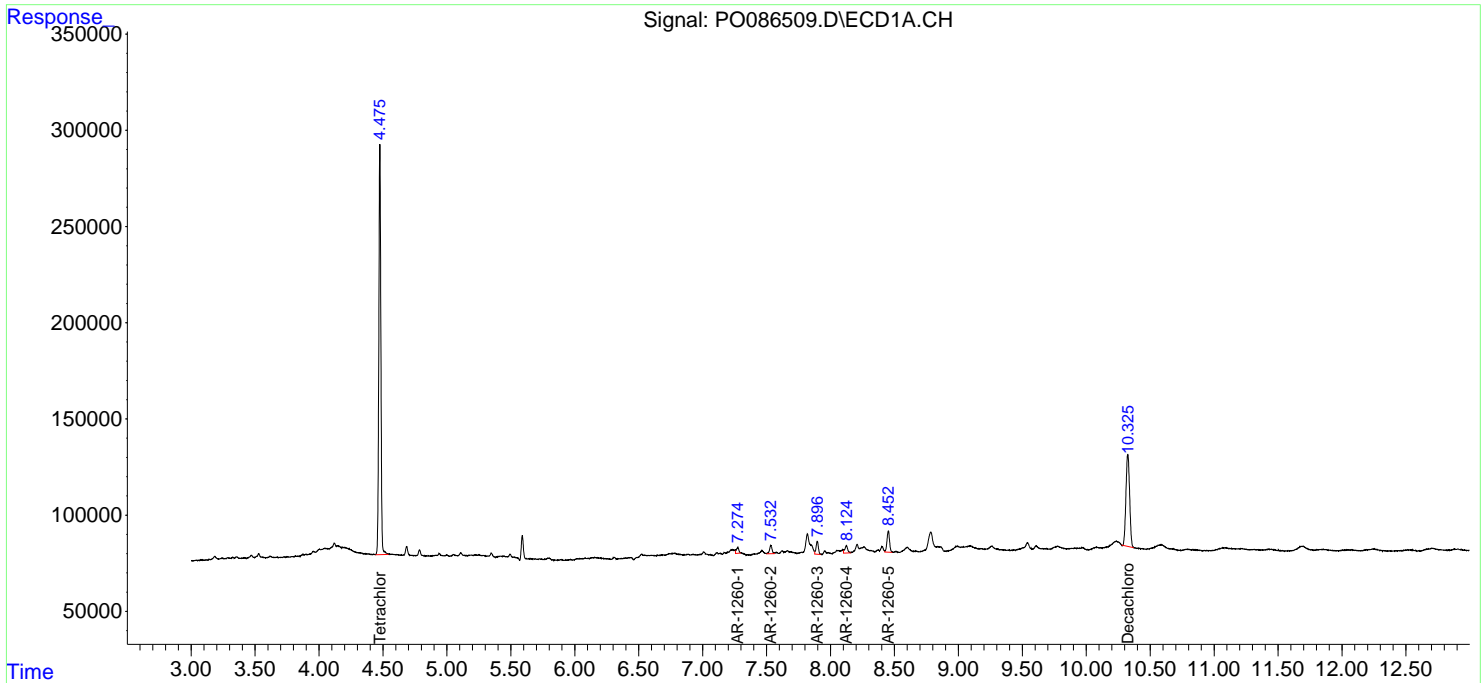
Instrument :
 ECD_0
 ClientSampleId :
 P038-SS001-1218-01

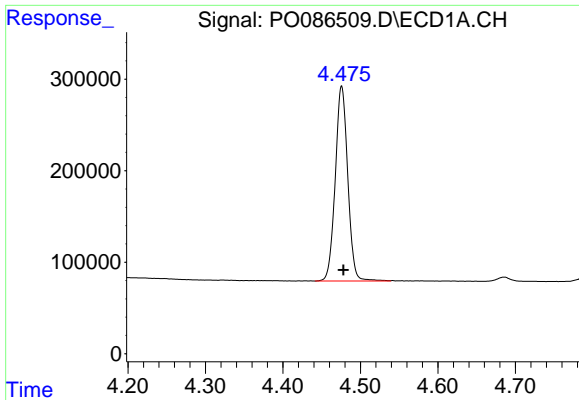
Manual Integrations
 APPROVED

Reviewed By :Yogesh Patel 05/25/2022
 Supervised By :Ankita Jodhani 05/25/2022

Integration File signal 1: autoint1.e
 Integration File signal 2: autoint2.e
 Quant Time: May 25 02:42:02 2022
 Quant Method : Z:\pestpcbsrv\HPCHEM1\ECD_0\methods\P0051122.M
 Quant Title : GC EXTRACTABLES
 QLast Update : Thu May 19 09:06:34 2022
 Response via : Initial Calibration
 Integrator: ChemStation 6890 Scale Mode: Small noise peaks clipped

Volume Inj. : 2 µl
 Signal #1 Phase : ZB-MR1 Signal #2 Phase: ZB-MR2
 Signal #1 Info : 30Mx0.32mmx 0.50µ Signal #2 Info : 30M x 0.32mm x 0.25µm



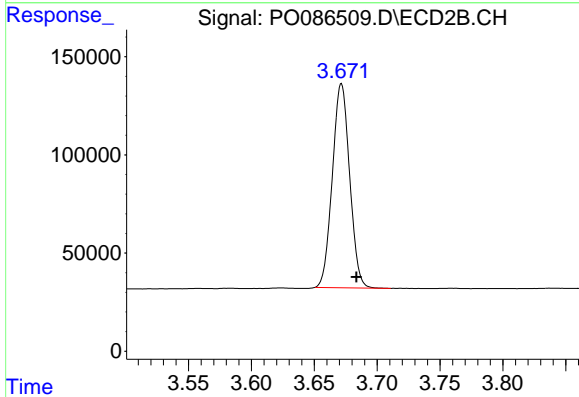


#1 Tetrachloro-m-xylene
 R.T.: 4.476 min
 Delta R.T.: -0.002 min
 Response: 2391048
 Conc: 23.53 ng/ml

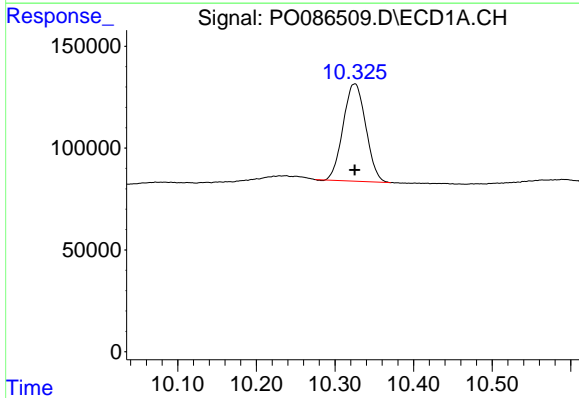
Instrument :
 ECD_O
 ClientSampleId :
 P038-SS001-1218-01

Manual Integrations
 APPROVED

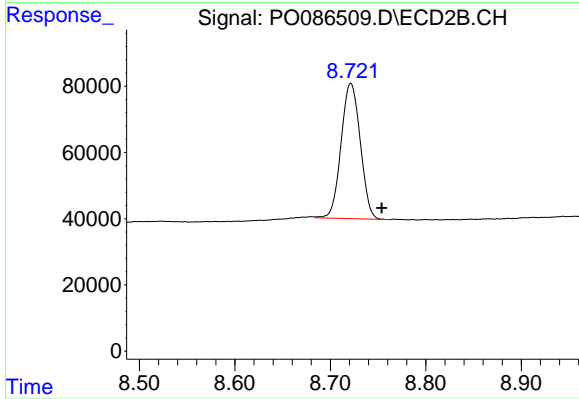
Reviewed By :Yogesh Patel 05/25/2022
 Supervised By :Ankita Jodhani 05/25/2022



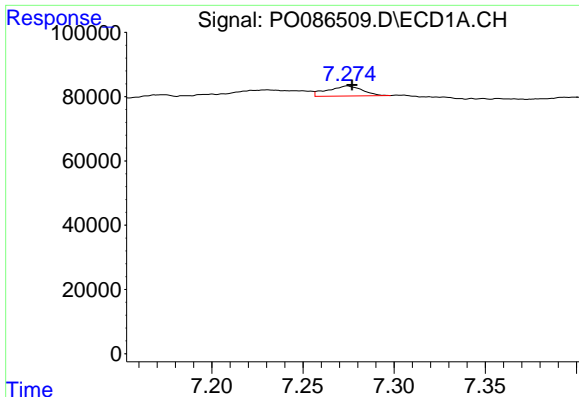
#1 Tetrachloro-m-xylene
 R.T.: 3.672 min
 Delta R.T.: -0.012 min
 Response: 994647
 Conc: 22.84 ng/ml



#2 Decachlorobiphenyl
 R.T.: 10.326 min
 Delta R.T.: 0.000 min
 Response: 957096
 Conc: 17.63 ng/ml



#2 Decachlorobiphenyl
 R.T.: 8.722 min
 Delta R.T.: -0.032 min
 Response: 569676
 Conc: 16.37 ng/ml



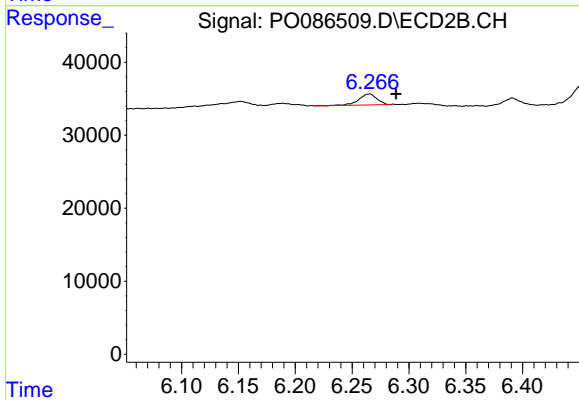
#31 AR-1260-1

R.T.: 7.274 min
 Delta R.T.: -0.003 min
 Response: 41765
 Conc: 13.80 ng/ml

Instrument :
 ECD_O
 ClientSampleId :
 P038-SS001-1218-01

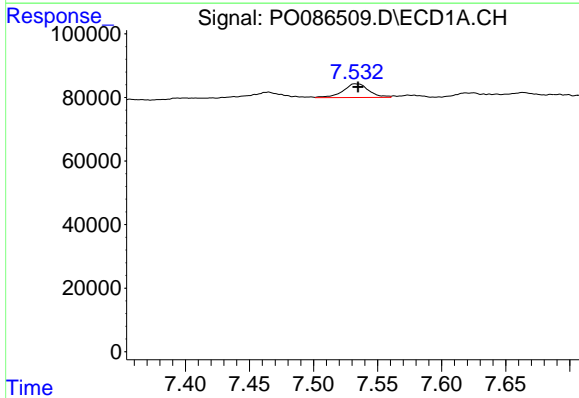
Manual Integrations
 APPROVED

Reviewed By :Yogesh Patel 05/25/2022
 Supervised By :Ankita Jodhani 05/25/2022



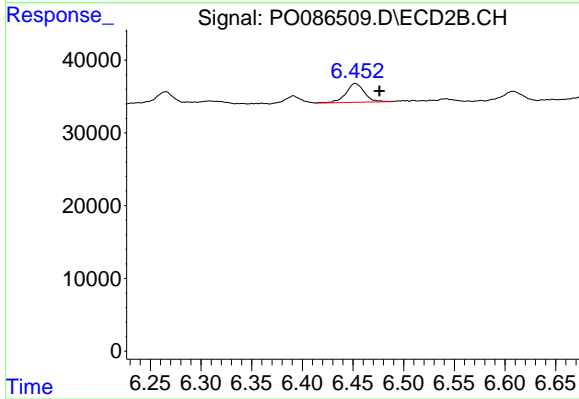
#31 AR-1260-1

R.T.: 6.266 min
 Delta R.T.: -0.023 min
 Response: 16963
 Conc: 8.72 ng/ml



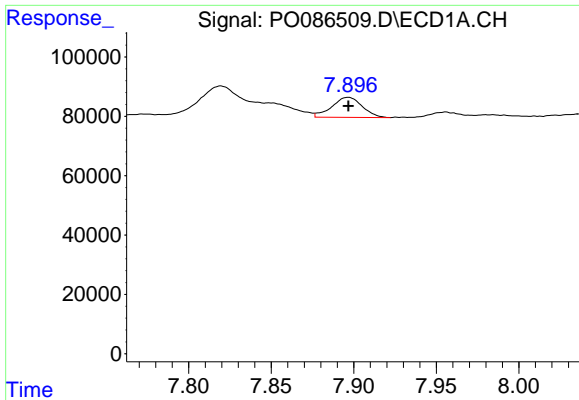
#32 AR-1260-2

R.T.: 7.532 min
 Delta R.T.: -0.002 min
 Response: 60882
 Conc: 16.83 ng/ml



#32 AR-1260-2

R.T.: 6.452 min
 Delta R.T.: -0.024 min
 Response: 32624
 Conc: 13.88 ng/ml

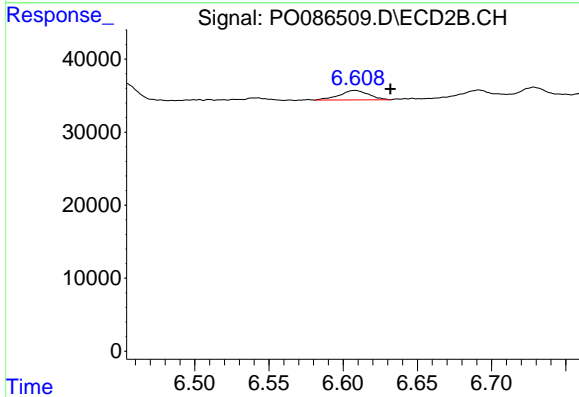


#33 AR-1260-3
 R.T.: 7.897 min
 Delta R.T.: 0.000 min
 Response: 86131
 Conc: 31.21 ng/ml

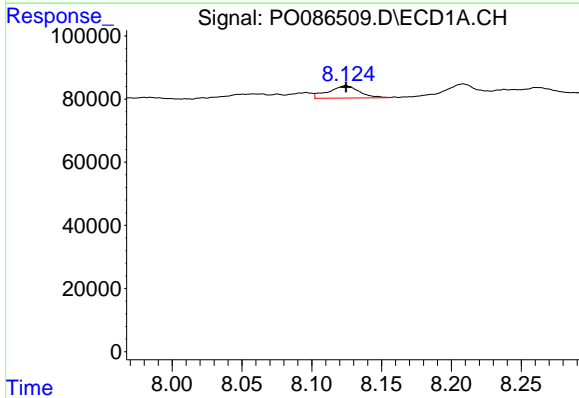
Instrument :
 ECD_O
 ClientSampleId :
 P038-SS001-1218-01

Manual Integrations
 APPROVED

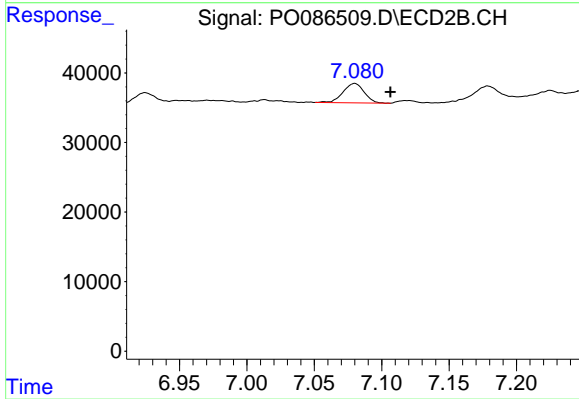
Reviewed By :Yogesh Patel 05/25/2022
 Supervised By :Ankita Jodhani 05/25/2022



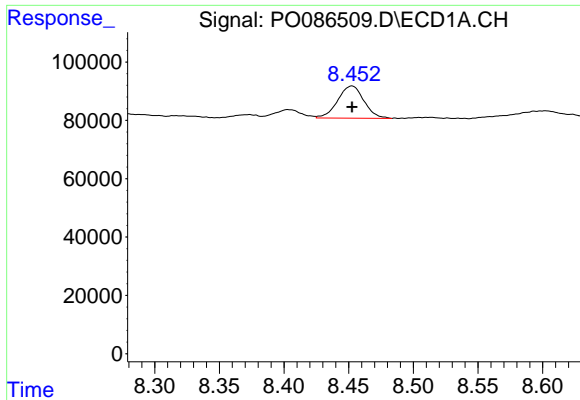
#33 AR-1260-3
 R.T.: 6.608 min
 Delta R.T.: -0.023 min
 Response: 17897
 Conc: 8.32 ng/ml



#34 AR-1260-4
 R.T.: 8.125 min
 Delta R.T.: 0.000 min
 Response: 59092
 Conc: 17.51 ng/ml



#34 AR-1260-4
 R.T.: 7.080 min
 Delta R.T.: -0.026 min
 Response: 30571
 Conc: 16.98 ng/ml



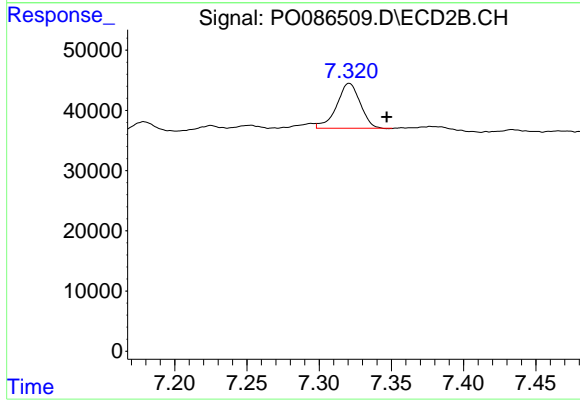
#35 AR-1260-5

R.T.: 8.453 min
 Delta R.T.: 0.000 min
 Response: 155456
 Conc: 25.19 ng/ml

Instrument :
 ECD_O
 ClientSampleId :
 P038-SS001-1218-01

Manual Integrations
 APPROVED

Reviewed By :Yogesh Patel 05/25/2022
 Supervised By :Ankita Jodhani 05/25/2022



#35 AR-1260-5

R.T.: 7.320 min
 Delta R.T.: -0.026 min
 Response: 84539
 Conc: 19.52 ng/ml m