

Data Path : Z:\pestpcbsrv\HPCHEM1\ECD_0\Data\P0052522\
 Data File : P0086548.D
 Signal(s) : Signal #1: ECD1A.CH Signal #2: ECD2B.CH
 Acq On : 25 May 2022 14:15
 Operator : YP\AJ
 Sample : N2878-14
 Misc :
 ALS Vial : 23 Sample Multiplier: 1

Instrument :
 ECD_0
ClientSampleId :
 P007-SS022-1218-01

Manual Integrations
APPROVED

Reviewed By :Yogesh Patel 05/26/2022
 Supervised By :Ankita Jodhani 05/26/2022

Integration File signal 1: autoint1.e
 Integration File signal 2: autoint2.e
 Quant Time: May 26 06:38:52 2022
 Quant Method : Z:\pestpcbsrv\HPCHEM1\ECD_0\methods\P0051122.M
 Quant Title : GC EXTRACTABLES
 QLast Update : Thu May 19 09:06:34 2022
 Response via : Initial Calibration
 Integrator: ChemStation 6890 Scale Mode: Small noise peaks clipped

Volume Inj. : 2 µl
 Signal #1 Phase : ZB-MR1 Signal #2 Phase: ZB-MR2
 Signal #1 Info : 30Mx0.32mmx 0.50µ Signal #2 Info : 30M x 0.32mm x 0.25µm

Compound	RT#1	RT#2	Resp#1	Resp#2	ng/ml	ng/ml

System Monitoring Compounds						
1) SA Tetrachlo...	4.477	3.673	2378518	971183	23.409	22.296
2) SA Decachlor...	10.325	8.722	1085304	628411	19.988	18.057
Target Compounds						
31) L7 AR-1260-1	7.276	6.264	261046	135857	86.256	69.802
32) L7 AR-1260-2	7.535	6.452	643016	331742	177.752	141.148m
33) L7 AR-1260-3	7.897	6.607	575655	169264	208.571	78.718 #
34) L7 AR-1260-4	8.122	7.079	540409	176813	160.169m	98.195 #
35) L7 AR-1260-5	8.452	7.321	864068	599716	140.027	138.444

(f)=RT Delta > 1/2 Window (#)=Amounts differ by > 25% (m)=manual int.

Data Path : Z:\pestpcbsrv\HPCHEM1\ECD_0\Data\P0052522\
 Data File : P0086548.D
 Signal(s) : Signal #1: ECD1A.CH Signal #2: ECD2B.CH
 Acq On : 25 May 2022 14:15
 Operator : YP\AJ
 Sample : N2878-14
 Misc :
 ALS Vial : 23 Sample Multiplier: 1

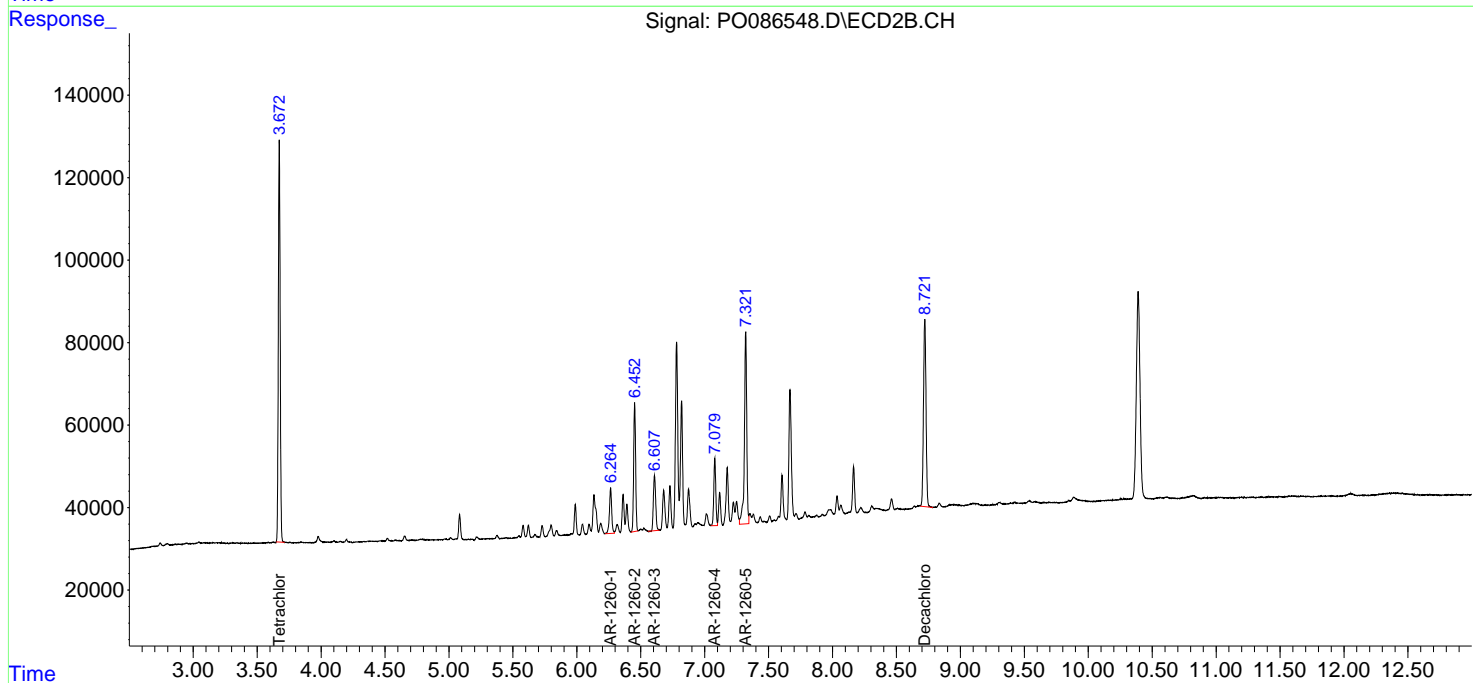
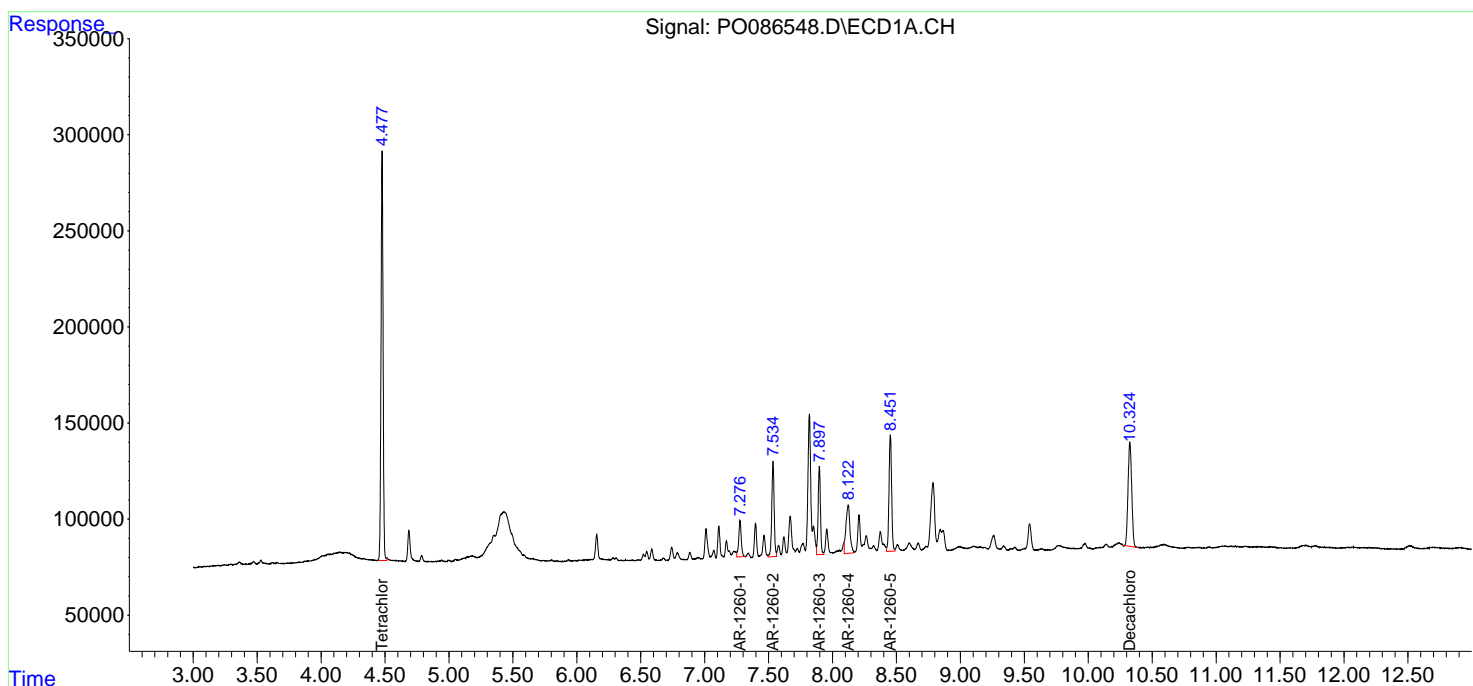
Instrument :
 ECD_0
ClientSampleId :
 P007-SS022-1218-01

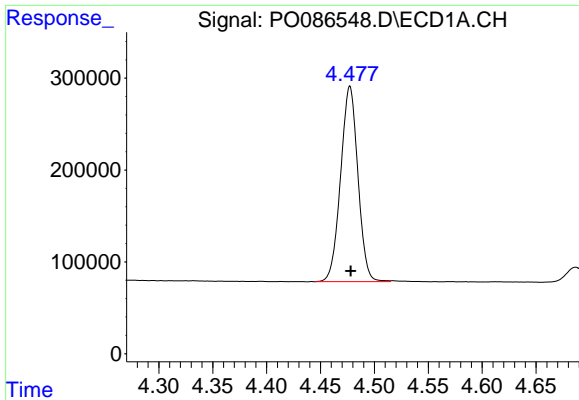
Manual Integrations
APPROVED

Reviewed By :Yogesh Patel 05/26/2022
 Supervised By :Ankita Jodhani 05/26/2022

Integration File signal 1: autoint1.e
 Integration File signal 2: autoint2.e
 Quant Time: May 26 06:38:52 2022
 Quant Method : Z:\pestpcbsrv\HPCHEM1\ECD_0\methods\P0051122.M
 Quant Title : GC EXTRACTABLES
 QLast Update : Thu May 19 09:06:34 2022
 Response via : Initial Calibration
 Integrator: ChemStation 6890 Scale Mode: Small noise peaks clipped

Volume Inj. : 2 µl
 Signal #1 Phase : ZB-MR1 Signal #2 Phase: ZB-MR2
 Signal #1 Info : 30Mx0.32mmx 0.50µ Signal #2 Info : 30M x 0.32mm x 0.25µm



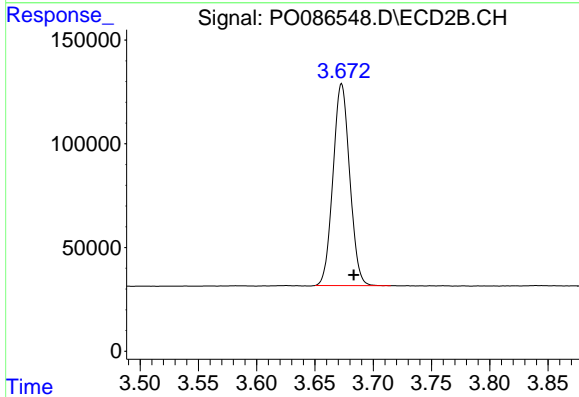


#1 Tetrachloro-m-xylene
 R.T.: 4.477 min
 Delta R.T.: 0.000 min
 Response: 2378518
 Conc: 23.41 ng/ml

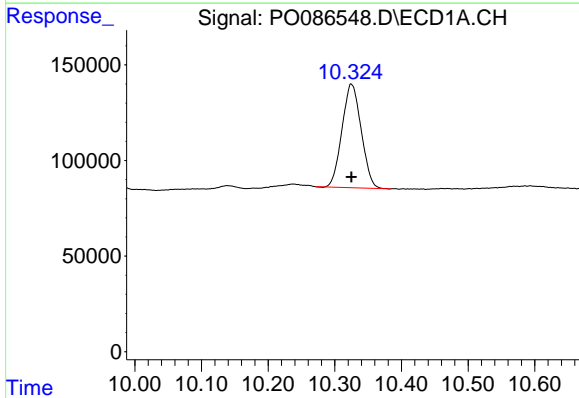
Instrument :
 ECD_O
 ClientSampleId :
 P007-SS022-1218-01

Manual Integrations
 APPROVED

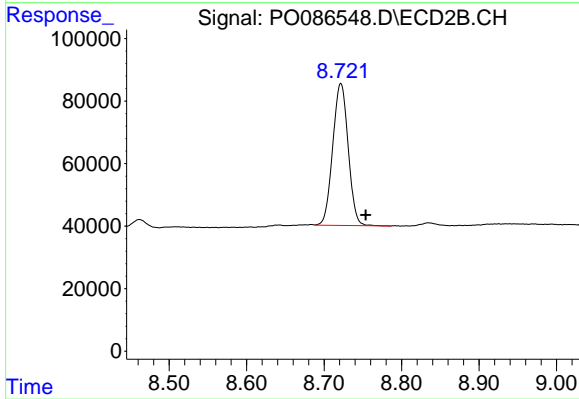
Reviewed By :Yogesh Patel 05/26/2022
 Supervised By :Ankita Jodhani 05/26/2022



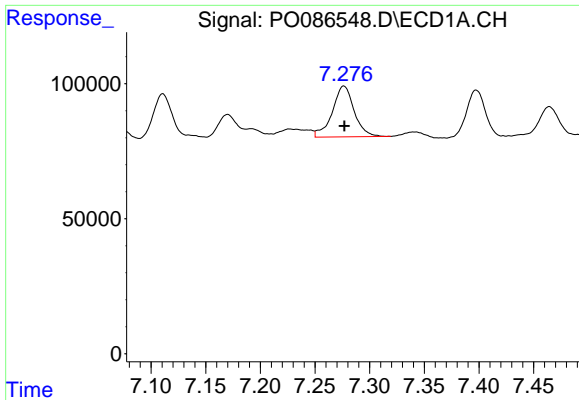
#1 Tetrachloro-m-xylene
 R.T.: 3.673 min
 Delta R.T.: -0.010 min
 Response: 971183
 Conc: 22.30 ng/ml



#2 Decachlorobiphenyl
 R.T.: 10.325 min
 Delta R.T.: 0.000 min
 Response: 1085304
 Conc: 19.99 ng/ml



#2 Decachlorobiphenyl
 R.T.: 8.722 min
 Delta R.T.: -0.032 min
 Response: 628411
 Conc: 18.06 ng/ml



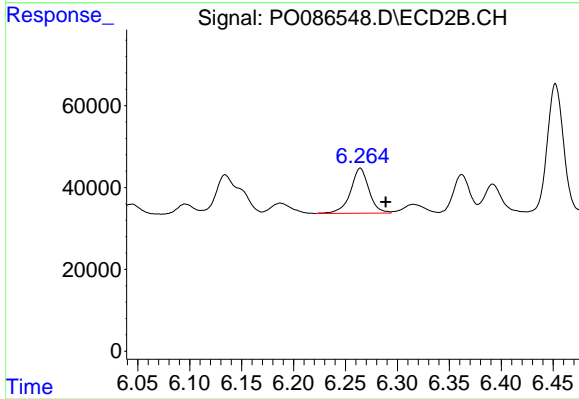
#31 AR-1260-1

R.T.: 7.276 min
 Delta R.T.: 0.000 min
 Response: 261046
 Conc: 86.26 ng/ml

Instrument :
 ECD_O
 ClientSampleId :
 P007-SS022-1218-01

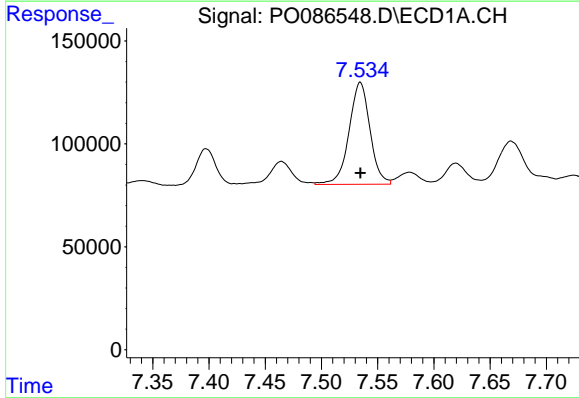
Manual Integrations
 APPROVED

Reviewed By :Yogesh Patel 05/26/2022
 Supervised By :Ankita Jodhani 05/26/2022



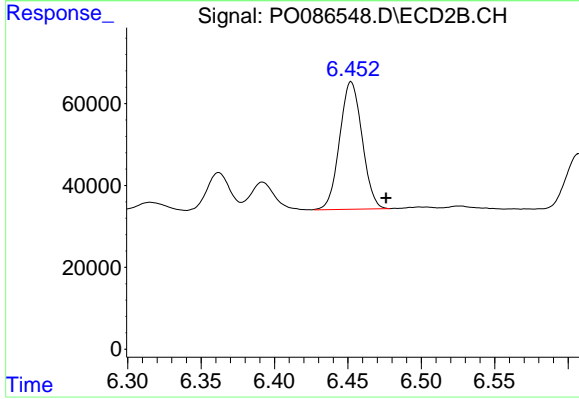
#31 AR-1260-1

R.T.: 6.264 min
 Delta R.T.: -0.024 min
 Response: 135857
 Conc: 69.80 ng/ml



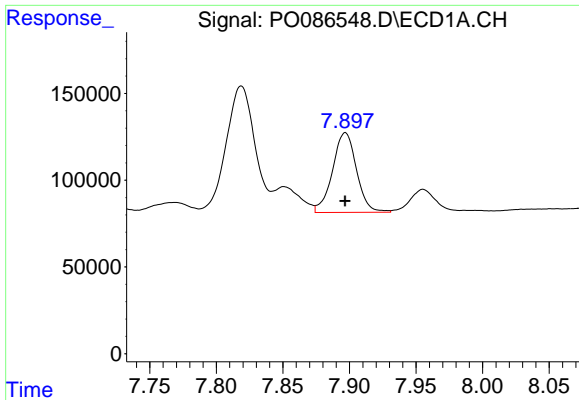
#32 AR-1260-2

R.T.: 7.535 min
 Delta R.T.: 0.000 min
 Response: 643016
 Conc: 177.75 ng/ml



#32 AR-1260-2

R.T.: 6.452 min
 Delta R.T.: -0.024 min
 Response: 331742
 Conc: 141.15 ng/ml m



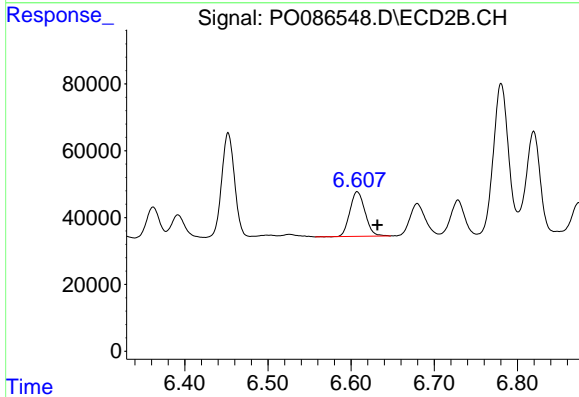
#33 AR-1260-3

R.T.: 7.897 min
 Delta R.T.: 0.000 min
 Response: 575655
 Conc: 208.57 ng/ml

Instrument :
 ECD_O
 ClientSampleId :
 P007-SS022-1218-01

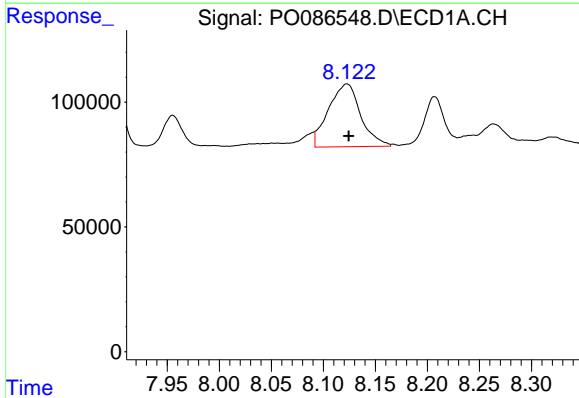
Manual Integrations
 APPROVED

Reviewed By :Yogesh Patel 05/26/2022
 Supervised By :Ankita Jodhani 05/26/2022



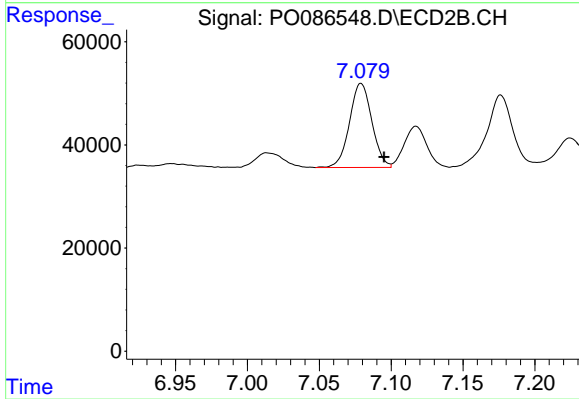
#33 AR-1260-3

R.T.: 6.607 min
 Delta R.T.: -0.024 min
 Response: 169264
 Conc: 78.72 ng/ml



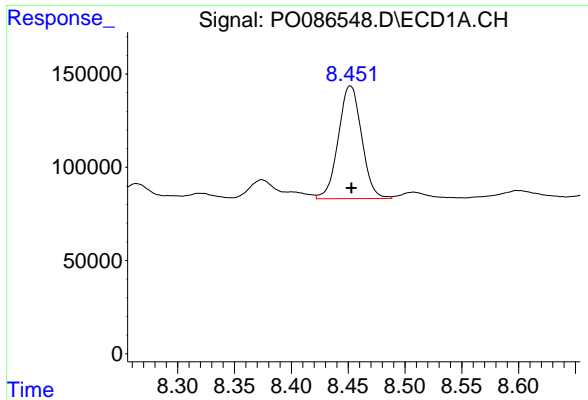
#34 AR-1260-4

R.T.: 8.122 min
 Delta R.T.: -0.002 min
 Response: 540409
 Conc: 160.17 ng/ml m



#34 AR-1260-4

R.T.: 7.079 min
 Delta R.T.: -0.016 min
 Response: 176813
 Conc: 98.19 ng/ml



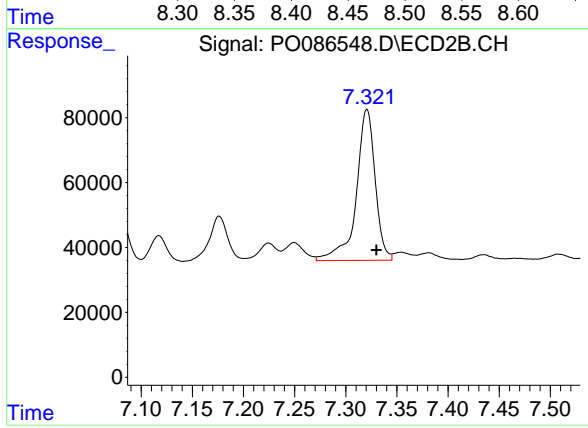
#35 AR-1260-5

R.T.: 8.452 min
 Delta R.T.: 0.000 min
 Response: 864068
 Conc: 140.03 ng/ml

Instrument :
 ECD_O
 ClientSampleId :
 P007-SS022-1218-01

Manual Integrations
 APPROVED

Reviewed By :Yogesh Patel 05/26/2022
 Supervised By :Ankita Jodhani 05/26/2022



#35 AR-1260-5

R.T.: 7.321 min
 Delta R.T.: -0.009 min
 Response: 599716
 Conc: 138.44 ng/ml