

Data Path : Z:\pestpcbsrv\HPCHEM1\ECD_0\Data\P0052522\
 Data File : P0086559.D
 Signal(s) : Signal #1: ECD1A.CH Signal #2: ECD2B.CH
 Acq On : 25 May 2022 17:14
 Operator : YP\AJ
 Sample : N2895-03
 Misc :
 ALS Vial : 32 Sample Multiplier: 1

Instrument :
 ECD_0
ClientSampleId :
 P008-SS004-1824-01

Manual Integrations
APPROVED

Reviewed By :Yogesh Patel 05/26/2022
 Supervised By :Ankita Jodhani 05/26/2022

Integration File signal 1: autoint1.e
 Integration File signal 2: autoint2.e
 Quant Time: May 26 06:43:36 2022
 Quant Method : Z:\pestpcbsrv\HPCHEM1\ECD_0\methods\P0051122.M
 Quant Title : GC EXTRACTABLES
 QLast Update : Thu May 19 09:06:34 2022
 Response via : Initial Calibration
 Integrator: ChemStation 6890 Scale Mode: Small noise peaks clipped

Volume Inj. : 2 µl
 Signal #1 Phase : ZB-MR1 Signal #2 Phase: ZB-MR2
 Signal #1 Info : 30Mx0.32mmx 0.50µ Signal #2 Info : 30M x 0.32mm x 0.25µm

Compound	RT#1	RT#2	Resp#1	Resp#2	ng/ml	ng/ml

System Monitoring Compounds						
1) SA Tetrachlo...	4.477	3.673	2163422	900622	21.292	20.676
2) SA Decachlor...	10.328	8.721	879833	519767	16.203	14.936
Target Compounds						
31) L7 AR-1260-1	7.278	6.264	426812	237972	141.029	122.268m
32) L7 AR-1260-2	7.536	6.452	629259	362566	173.949	154.262
33) L7 AR-1260-3	7.897	6.607	534091	273289	193.511	127.095 #
34) L7 AR-1260-4	8.126	7.080	561881	289684	166.533	160.879
35) L7 AR-1260-5	8.453	7.321	1011612	695532	163.937	160.564

(f)=RT Delta > 1/2 Window (#)=Amounts differ by > 25% (m)=manual int.

Data Path : Z:\pestpcbsrv\HPCHEM1\ECD_0\Data\P0052522\
 Data File : P0086559.D
 Signal(s) : Signal #1: ECD1A.CH Signal #2: ECD2B.CH
 Acq On : 25 May 2022 17:14
 Operator : YP\AJ
 Sample : N2895-03
 Misc :
 ALS Vial : 32 Sample Multiplier: 1

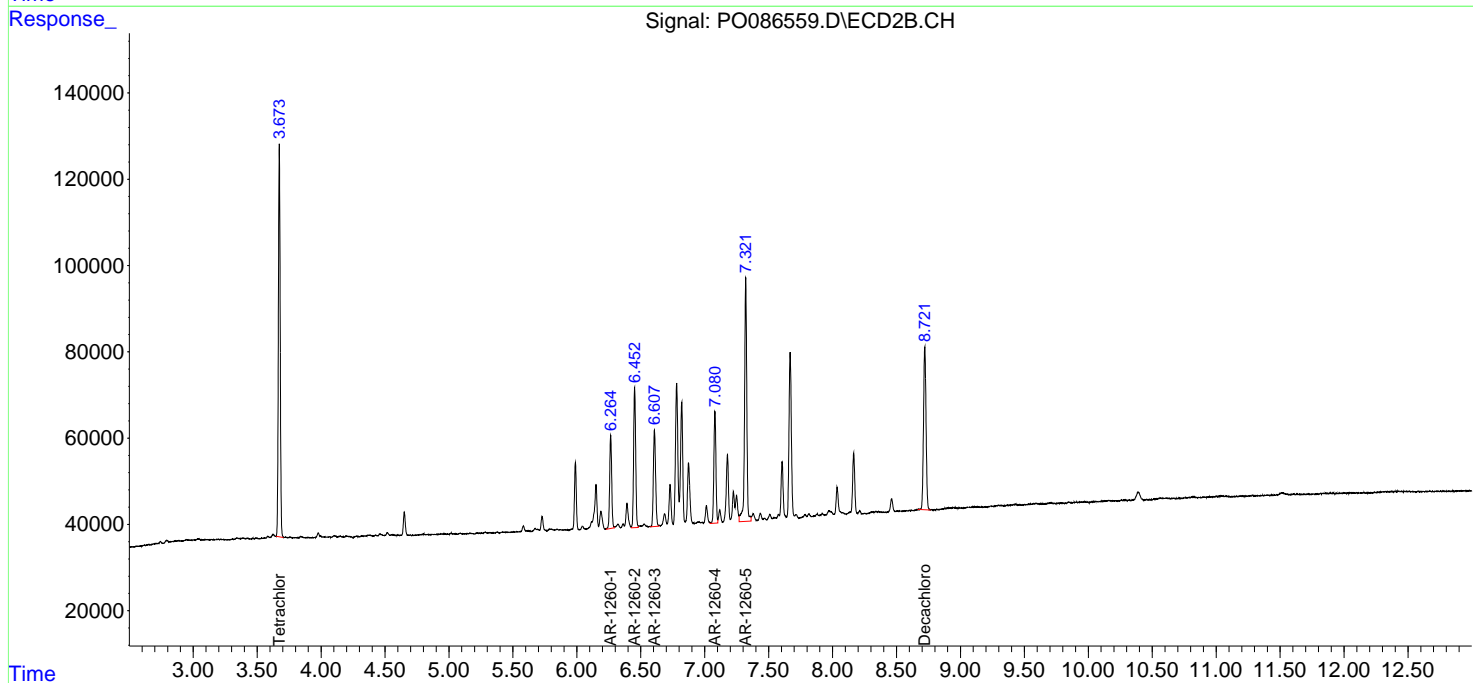
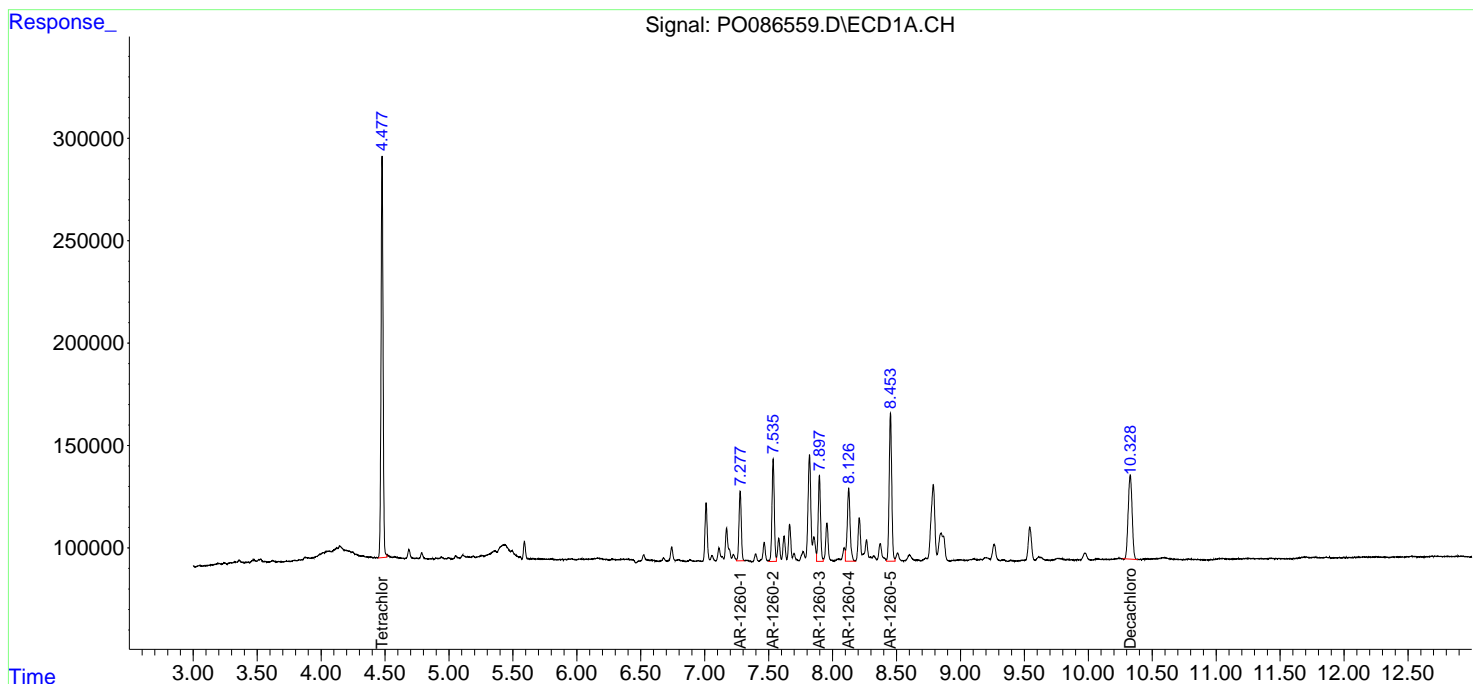
Instrument :
 ECD_0
 ClientSampleId :
 P008-SS004-1824-01

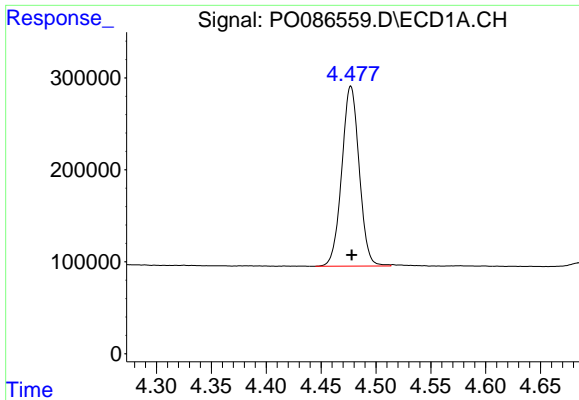
Manual Integrations
 APPROVED

Reviewed By :Yogesh Patel 05/26/2022
 Supervised By :Ankita Jodhani 05/26/2022

Integration File signal 1: autoint1.e
 Integration File signal 2: autoint2.e
 Quant Time: May 26 06:43:36 2022
 Quant Method : Z:\pestpcbsrv\HPCHEM1\ECD_0\methods\P0051122.M
 Quant Title : GC EXTRACTABLES
 QLast Update : Thu May 19 09:06:34 2022
 Response via : Initial Calibration
 Integrator: ChemStation 6890 Scale Mode: Small noise peaks clipped

Volume Inj. : 2 µl
 Signal #1 Phase : ZB-MR1 Signal #2 Phase: ZB-MR2
 Signal #1 Info : 30Mx0.32mmx 0.50µ Signal #2 Info : 30M x 0.32mm x 0.25µm





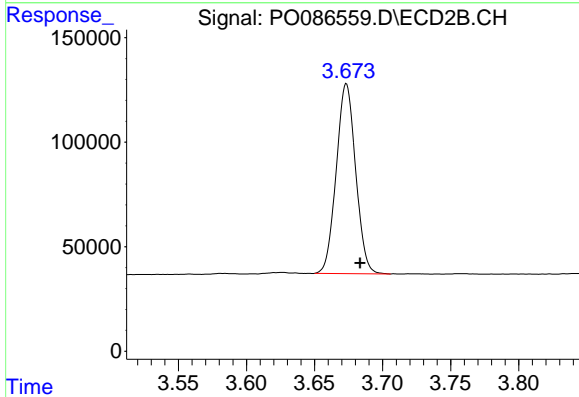
#1 Tetrachloro-m-xylene

R.T.: 4.477 min
 Delta R.T.: 0.000 min
 Response: 2163422
 Conc: 21.29 ng/ml

Instrument :
 ECD_O
 ClientSampleId :
 P008-SS004-1824-01

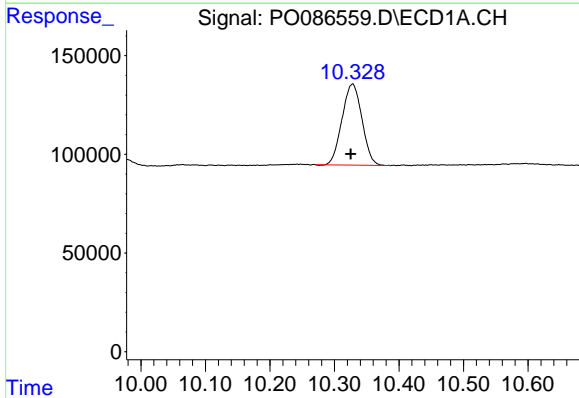
Manual Integrations
 APPROVED

Reviewed By :Yogesh Patel 05/26/2022
 Supervised By :Ankita Jodhani 05/26/2022



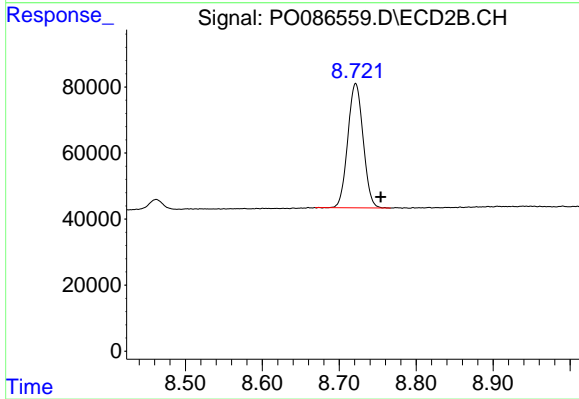
#1 Tetrachloro-m-xylene

R.T.: 3.673 min
 Delta R.T.: -0.010 min
 Response: 900622
 Conc: 20.68 ng/ml



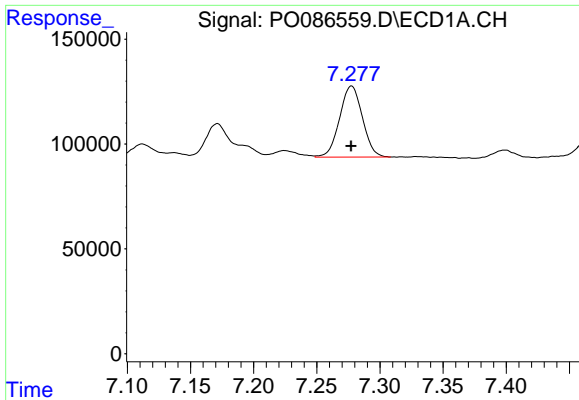
#2 Decachlorobiphenyl

R.T.: 10.328 min
 Delta R.T.: 0.003 min
 Response: 879833
 Conc: 16.20 ng/ml



#2 Decachlorobiphenyl

R.T.: 8.721 min
 Delta R.T.: -0.033 min
 Response: 519767
 Conc: 14.94 ng/ml



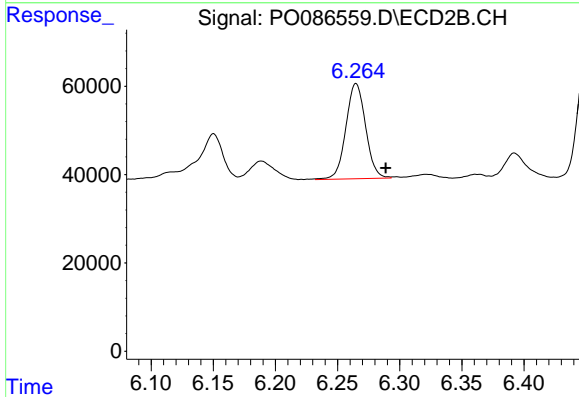
#31 AR-1260-1

R.T.: 7.278 min
 Delta R.T.: 0.000 min
 Response: 426812
 Conc: 141.03 ng/ml

Instrument :
 ECD_O
 ClientSampleId :
 P008-SS004-1824-01

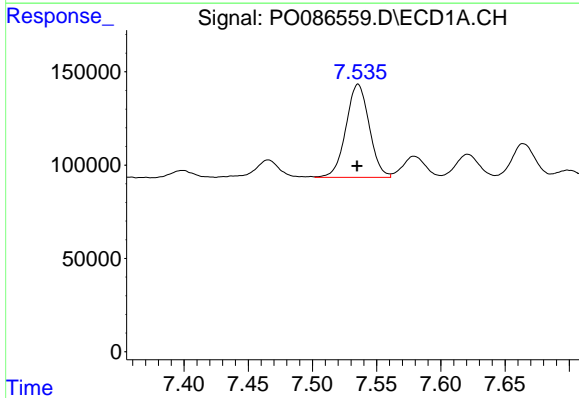
Manual Integrations
 APPROVED

Reviewed By :Yogesh Patel 05/26/2022
 Supervised By :Ankita Jodhani 05/26/2022



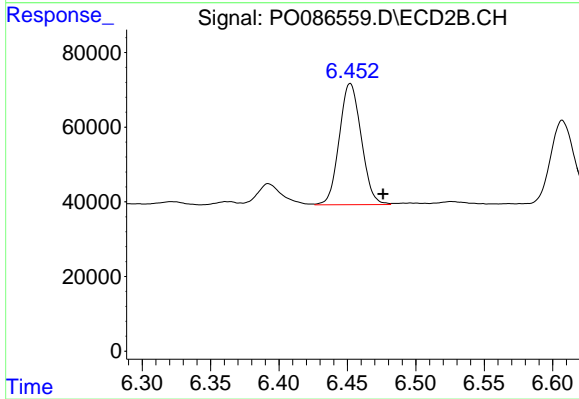
#31 AR-1260-1

R.T.: 6.264 min
 Delta R.T.: -0.024 min
 Response: 237972
 Conc: 122.27 ng/ml m



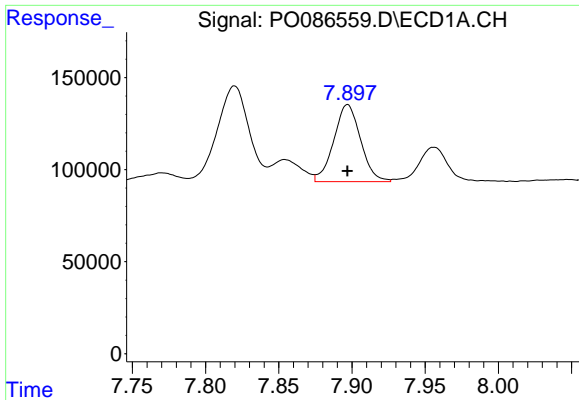
#32 AR-1260-2

R.T.: 7.536 min
 Delta R.T.: 0.000 min
 Response: 629259
 Conc: 173.95 ng/ml



#32 AR-1260-2

R.T.: 6.452 min
 Delta R.T.: -0.024 min
 Response: 362566
 Conc: 154.26 ng/ml



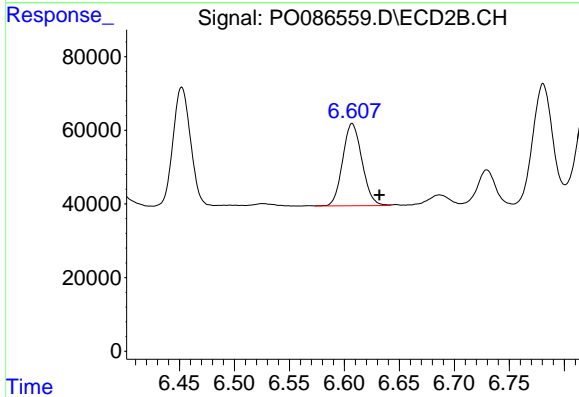
#33 AR-1260-3

R.T.: 7.897 min
 Delta R.T.: 0.000 min
 Response: 534091
 Conc: 193.51 ng/ml

Instrument :
 ECD_O
 ClientSampleId :
 P008-SS004-1824-01

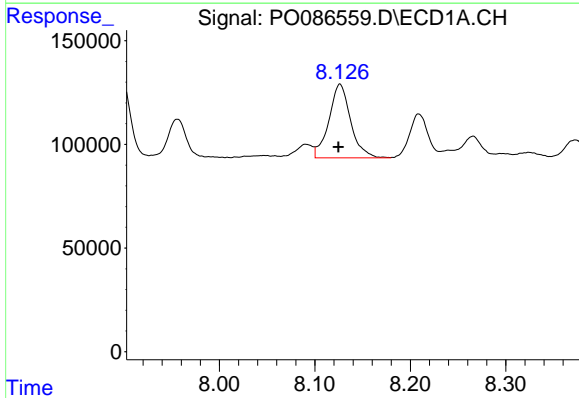
Manual Integrations
 APPROVED

Reviewed By :Yogesh Patel 05/26/2022
 Supervised By :Ankita Jodhani 05/26/2022



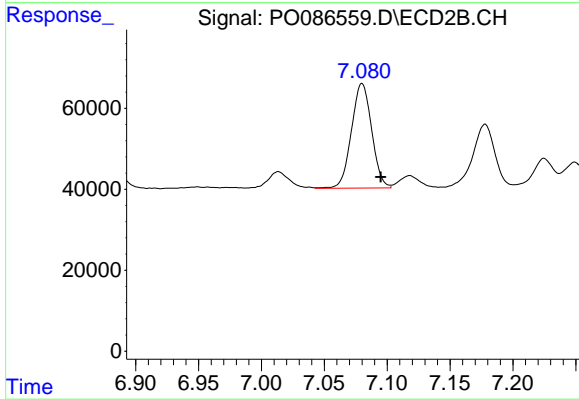
#33 AR-1260-3

R.T.: 6.607 min
 Delta R.T.: -0.025 min
 Response: 273289
 Conc: 127.10 ng/ml



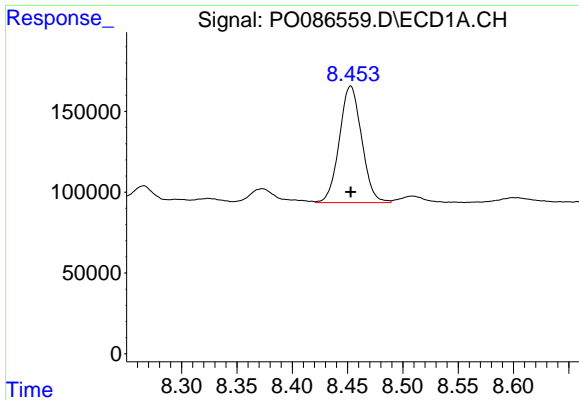
#34 AR-1260-4

R.T.: 8.126 min
 Delta R.T.: 0.002 min
 Response: 561881
 Conc: 166.53 ng/ml



#34 AR-1260-4

R.T.: 7.080 min
 Delta R.T.: -0.015 min
 Response: 289684
 Conc: 160.88 ng/ml



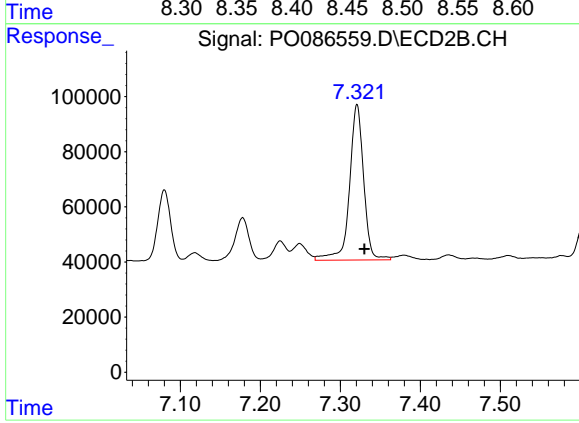
#35 AR-1260-5

R.T.: 8.453 min
 Delta R.T.: 0.000 min
 Response: 1011612
 Conc: 163.94 ng/ml

Instrument :
 ECD_O
 ClientSampleId :
 P008-SS004-1824-01

Manual Integrations
 APPROVED

Reviewed By :Yogesh Patel 05/26/2022
 Supervised By :Ankita Jodhani 05/26/2022



#35 AR-1260-5

R.T.: 7.321 min
 Delta R.T.: -0.009 min
 Response: 695532
 Conc: 160.56 ng/ml